

**Atlantic Intracoastal Waterway Federal Navigation Channel  
Cumberland Dividings Maintenance Dredging  
Camden County, Georgia  
Environmental Assessment and FONSI**

**Appendix B**

**Cultural Resources Assessment and Programmatic Agreement**

**U.S. ARMY CORPS OF ENGINEERS  
SAVANNAH DISTRICT  
100 WEST OGLETHORPE AVENUE  
SAVANNAH, GEORGIA 31401  
January 2023**



**Appendix B Table of Contents**  
**B.1. Programmatic Agreement**  
**B.2. Cultural Resources Assessment**

**Atlantic Intracoastal Waterway Federal Navigation Channel  
Cumberland Dividings Maintenance Dredging  
Camden County, Georgia  
Draft Environmental Assessment and FONSI**

**B.1**

**Programmatic Agreement**

**U.S. ARMY CORPS OF ENGINEERS  
SAVANNAH DISTRICT  
100 WEST OGLETHORPE AVENUE  
SAVANNAH, GEORGIA 31401  
January 2023**



**PROGRAMMATIC AGREEMENT  
AMONG  
THE SAVANNAH DISTRICT, US ARMY CORPS OF ENGINEERS,  
THE GEORGIA STATE HISTORIC PRESERVATION OFFICER,  
THE SOUTH CAROLINA STATE HISTORIC PRESERVATION OFFICER,  
AND THE ADVISORY COUNCIL ON HISTORIC PRESERVATION**

**FOR PORTIONS OF THE  
ATLANTIC INTRACOASTAL WATERWAY, GEORGIA AND SOUTH CAROLINA  
MANAGED BY THE  
SAVANNAH DISTRICT, US ARMY CORPS OF ENGINEERS  
2013**

WHEREAS, the Savannah District, US Army Corps of Engineers (Savannah District), maintains the Atlantic Intracoastal Waterway (AIWW) between Port Royal Sound/Hilton Head Island (AIWW Mile 552) and the Cumberland Sound/Florida state line (AIWW Mile 713) which is located in Chatham, Bryan, Liberty, McIntosh, Glynn, and Camden Counties, Georgia and the portion of Beaufort County, South Carolina, located between Port Royal Sound and Savannah River (Figures 1-7); and

WHEREAS, Skull Creek, Fields Cut, Elba Cut, Hells Gate, Florida Passage, Bear River, Creighton Narrows, Little Mud River, Buttermilk Sound, Mackay River, St. Simons Sound, Jekyll Creek, and Cumberland River comprise the 13 major and previously defined reaches within the 161-mile AIWW portion; and

WHEREAS, there are approximately 71 disposal tracts for dredged material along the AIWW, totaling approximately 14,251 acres; and

WHEREAS, the Savannah District portion of the AIWW and the disposal tracts became the responsibility of Savannah District prior to the passage of the National Historic Preservation Act (P.L. 89-665, as amended) and the majority of the lands were not surveyed for historic properties prior to maintenance activities; and

WHEREAS, maintenance dredging to a depth of 12 feet Mean Low Water has occurred as needed to keep the waterway operational; and,

WHEREAS, the Savannah District proposes to develop a dredged material management plan (DMMP) for the Savannah District portion of the AIWW for the next 20 years and the effects of the implementation of the management plan upon historic properties are unknown; and,

WHEREAS, two cultural resources investigations have been conducted on portions of the AIWW channel with the results found in Appendix B; and

WHEREAS, the Savannah District recognizes the activities proposed in the DMMP may have an effect upon historic properties included in or eligible for inclusion in the National

Register of Historic Places and has consulted with the Advisory Council on Historic Preservation (Council), the Georgia State Historic Preservation Officer (Georgia SHPO), the South Carolina State Historic Preservation Officer (South Carolina SHPO), and Native American Tribes pursuant to regulation 36 CFR, Part 800, implementing Section 106 of the National Historic Preservation Act (16 U.S.C. 470h-2(f); Section 110(f) of the same Act (16 U.S.C. Section 470h-2[f]), and Section 111 of the same Act (16 U.S.C. Section 470h-3); and

**WHEREAS**, in accordance with 36 CFR § 800.6(a)(1), Savannah District has notified the Council of its adverse effect determination, providing the specified documentation, and the Council has chosen to participate in the consultation pursuant to 36 CFR § 800.6(a)(1)(iii); and

**WHEREAS**, the Savannah District has identified 15 Federally recognized Indian tribes (Tribes) to include Seminole Nation of Oklahoma, Kialegee Tribal Town, Absentee Shawnee Tribe of Oklahoma, Muscogee (Creek) Nation of Oklahoma, Cherokee Nation of Oklahoma, Seminole Tribe of Florida, Poarch Band of Creek Indians of Alabama, Chickasaw Nation, Alabama-Quassarte Tribal Town, Eastern Shawnee Tribe of Oklahoma, Thlopthlocco Tribal Town, Shawnee Tribe, United Keetoowah Band of Cherokee Indians in Oklahoma, Catawba Indian Nation, and Tuscarora Nation of New York that may attach traditional religious and cultural importance; and

**WHEREAS**, none of the tribes have expressed an interest to consult on this Programmatic Agreement;

**NOW THEREFORE**, the Savannah District, the Consulting Parties composed of the Georgia SHPO, the South Carolina SHPO, and the Council agree that the project shall be administered in accordance with the following stipulations to satisfy Savannah District's Section 106 responsibilities for all individual aspects of the project.

#### **STIPULATIONS**

The Savannah District, subject to the availability of funds, shall reinitiate consultation under Section 106 with the Georgia SHPO, South Carolina SHPO, and Native American Tribes and shall ensure that the following measures are carried out:

1. Savannah District and the consulting parties shall identify the need for and scope of archeological surveys of areas that are affected by the dredged material management plan. The surveys shall be conducted in a manner consistent with the Secretary of Interior's Standards and Guidelines for Identification (48 F.R. 44720-23) and any standards and guidelines developed by the Georgia SHPO and the South Carolina SHPO. The surveys shall be conducted in consultation with the Georgia SHPO and the South Carolina SHPO and reports of the survey shall be submitted to the Georgia SHPO and the South Carolina SHPO for review and comment.
2. The Savannah District shall evaluate properties identified through the surveys in accordance with 36 CFR, Part 800.4. If the survey results in the identification of properties that are eligible for, or included in, the National Register of Historic Places, Savannah District shall determine the effect of the proposed project upon those resources in accordance with 36 CFR, Part 800.5.

3. The Savannah District shall identify and evaluate alternatives to avoid and/or mitigate adverse effects to properties determined eligible for inclusion, or included in, the National Register of Historic Places in accordance with 36 CFR, Part 800.6.

4. The Savannah District shall ensure that all mitigation measures are developed in consultation with the Georgia SHPO or South Carolina SHPO as appropriate for the recovery of archaeological or historical data from properties determined eligible for inclusion in the National Register of Historic Places. Mitigation activities may consist of, but are not limited to, data recovery, Historic American Building Survey/Historic American Engineering Record recordation, other built environment documentation, archival research, and protection of historic structures and engineering elements. Research designs shall be consistent with the Secretary of the Interior's Standards and Guidelines for Archeology and Historic Preservation (48 FR 44716) and take into account the Council's publication, *Treatment of Archeological Properties* (Advisory Council on Historic Preservation 1980), and any standards and guidelines set forth by the Georgia SHPO and South Carolina SHPO. The plans shall specify, at a minimum:

- a. the property, properties, or portions of properties where data recovery is to be carried out;
- b. any property, properties, or portions of properties that will be destroyed without data recovery;
- c. the research questions to be addressed through the data recovery, with an explanation of their relevance and importance;
- d. the methods to be used, with an explanation of their relevance to the research questions;
- e. the methods to be used in analysis, data management, and dissemination of data, including a schedule;
- f. the proposed disposition of recovered materials and records;
- g. proposed methods for involving the interested public in the data recovery;
- h. proposed methods for disseminating results of the work to the interested public;
- i. proposed methods by which local historic sites and historic preservation agencies and individuals will be kept informed of the work and afforded the opportunity to participate; and,
- j. a proposed schedule for the submission of progress reports to the Savannah District, the Georgia SHPO, the South Carolina SHPO, and the Council.

5. The data recovery plans and/or mitigation plans shall be submitted by the Savannah District to the Georgia SHPO and/or South Carolina SHPO, as appropriate, and the Council for 45 days review. Unless the Georgia SHPO, South Carolina SHPO, or Council objects within 45 days after receipt of a data recovery plan, the Savannah District shall ensure that it is implemented.

6. The Savannah District shall ensure that all archeological survey, testing, and data recovery work carried out pursuant to this Programmatic Agreement is carried out by or under the direct

supervision of a person or persons meeting, at a minimum, the standards for archeologists set forth in the Secretary of the Interior's Standards and Guidelines for Archeological Documentation (48 F.R. 44716-42).

7. The Savannah District shall ensure that all materials and records resulting from survey, testing, and data recovery are curated in accordance with 36 CFR, Part 79.

8. The Savannah District shall ensure that all final archeological reports resulting from actions pursuant to this agreement will be provided to the Georgia SHPO and the South Carolina SHPO. The Savannah District shall ensure that all such reports are responsive to the contemporary professional standards, and to the Department of Interior's Format Standards for Final Reports of Data Recovery Programs (42 F.R. 5377-79).

9. Any party to this Programmatic Agreement may request that it be amended, whereupon the parties will consult in accordance with 36 CFR, Part 800.6(c)(7) to consider amendment.

10. The Georgia SHPO and the South Carolina SHPO may monitor activities carried out pursuant to this Programmatic Agreement, and the Council will review such activities if so requested. The Savannah District will cooperate with the Georgia SHPO and the South Carolina SHPO in carrying out their monitoring and review responsibilities.

11. The parties to this agreement shall consult to review implementation of the terms of this agreement and determine whether revisions are needed. If revisions are needed, the parties to this agreement will consult in accordance with 36 CFR, Part 800 to make such revisions.

12. Any party to this agreement may terminate it by providing 30 days notice to the other parties, provided that the parties will consult during the period prior to termination to seek agreement on amendments or other actions that would avoid termination. In the event of termination, the Savannah District will comply with 36 CFR, Parts 800.4 through 800.6 with regard to individual undertakings covered by this Programmatic Agreement.

13. Should the Georgia SHPO, South Carolina SHPO, or Council object within 45 days to any actions proposed pursuant to the agreement, the Savannah District shall consult with the objecting party to resolve the objection. If the Savannah District determines that the objection cannot be resolved, the Savannah District shall request further comments of the Council pursuant to 36 CFR, Part 800.7. Any Council comment provided in response to such a request will be taken into account by the Savannah District in accordance with 36 CFR, Part 800.7 with reference only to the subject of the dispute; the Savannah District's responsibility to carry out all actions under this agreement that are not the subjects of the dispute will remain unchanged.

14. If any unanticipated archaeological sites and/or human skeletal remains are discovered during archaeological surveys, Savannah District shall secure the area in the immediate vicinity of the discovery and shall notify the Georgia SHPO or the South Carolina SHPO, as applicable, and interested Native American Tribes, by telephone, followed by written communication, as soon as practicable. Savannah District, the Georgia SHPO or South Carolina SHPO, as applicable, and Native American Tribes shall assess the situation and recommend a course of action within two business days after such notification.

15. Until such time as all surveys have been completed in accordance with the terms of this agreement, Savannah District will provide an annual status report to the Council, Georgia and South Carolina SHPOs, and affiliated Federally-recognized Native American Tribes to review implementation of the terms of this agreement and to determine whether amendments are needed. If amendments are needed, the signatories to this agreement will consult, in accordance with Stipulation 9 of this agreement, to make such revisions. The first status report will be submitted to the consulting parties one year after the date this agreement is ratified. Alternatively, an annual meeting may occur to review implementation of the terms of this agreement and to determine whether amendments are needed, and will serve in lieu of an annual report.

16. At any time during implementation to the measures stipulated in this agreement, should an objection to any such measure be raised by a Native American Tribe or another member of the public, the Savannah District shall take the objection into account and consult as needed with the objecting party, the Georgia SHPO, the South Carolina SHPO, and the Council to resolve the objection.

17. In the event the Savannah District does not carry out the terms of the Programmatic Agreement, the Savannah District will comply with 36 CFR Parts 800.4 through 800.6 with regard to individual undertakings covered by this Programmatic Agreement.

18. This Agreement shall be effective when all signatories have signed it and will automatically terminate on the tenth anniversary thereof, unless each of the signatories agrees to extend the term hereof through an amendment per Stipulation 9. All signatories will meet prior to the termination date to discuss extending the term.

19. Execution and implementation of this Programmatic Agreement evidences that the Savannah District has satisfied its Section 106 responsibilities for all individual undertakings of the program.

20. Nothing herein shall constitute, or be deemed to constitute, an obligation of future appropriations by the United States.



---

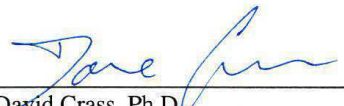
**SIGNATORY PARTIES**

---

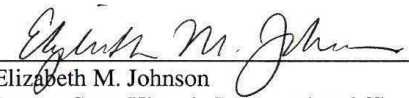
**SAVANNAH DISTRICT, US ARMY CORPS OF ENGINEERS:**

 \_\_\_\_\_ DATE: 27 FEB 2013  
JEFFREY M. HALL  
Colonel, EN  
Commanding

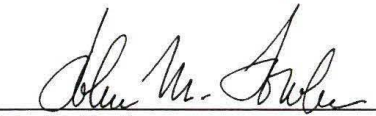
**GEORGIA STATE HISTORIC PRESERVATION OFFICER:**

 \_\_\_\_\_ DATE: 20 MAR '13  
David Crass, Ph.D.  
Division Director and Deputy State Historic Preservation Officer

**SOUTH CAROLINA STATE HISTORIC PRESERVATION OFFICER:**

 \_\_\_\_\_ DATE: 4/8/2013  
Elizabeth M. Johnson  
Deputy State Historic Preservation Officer

**ADVISORY COUNCIL ON HISTORIC PRESERVATION:**

 \_\_\_\_\_ DATE: 5/6/13  
John M. Fowler  
Executive Director

---

Appendix A  
Definitions

---

**Atlantic Intracoastal Waterway (AIWW)** - A 739-mile inland waterway system between Hampton Roads, Virginia, and St. John's River, Florida, which offers a continuous, sheltered passage between these two destinations. Congress authorized the AIWW through various laws passed between 1919 and the 1930's. The waterway has an authorized project depth of 12 feet and width varying from 90 – 250 feet. The AIWW's original purpose was to support commercial navigation for interstate commerce, offer safe harbor from inclement weather, and protect shipping from wartime enemy attacks. At present, the AIWW primarily serves recreational vessels throughout its entire length. A few reaches serve commercial vessels on a regular basis, while some reaches serve the Department of Defense and US Coast Guard vessels.

Five US Army Corps of Engineers Districts manage AIWW. From north to south, these Districts include Norfolk, Wilmington, Charleston, Savannah, and Jacksonville.

**Dredging Reach** - A segment of the channel/waterway defined by river mile stations and designated by the body (or bodies) of water in which the channel or waterway runs.

**Disposal Tract** – A parcel of land acquired for placement of dredged material, maintenance activities, and/or access to the AIWW. The 71 sediment disposal tracts are held through easements with the land owners and are not owned in fee title by the Government. Titles to all necessary rights-of-way and sediment disposal areas for the 12-foot channel between Savannah, Georgia, and Beaufort, South Carolina, were accepted as satisfactory on March 27, 1939. Rights-of-way and disposal areas needed for initial work and for subsequent maintenance of the 12-foot channel between Savannah, Georgia, and Fernandina, Florida, were approved by the Chief of Engineers on April 4, 1940.

**Mean Low Water (MLW)** - A tidal datum. The average of all the low water heights observed over the National Tidal Datum Epoch.

**Operational Reach** - A unique designator for a segment of the channel/waterway defined by river mile stations. For operational reaches in the Savannah District portion of the AIWW, reaches are notated as SAV (Savannah) followed by a number. Reaches are numbered in ascending order from north to south. Each operational reach corresponds with a dredging reach. SAV-1 is the northernmost reach and corresponds with Port Royal to Ramshorn Creek dredging reach, which begins at mile 552. There are a total of 36 operational reaches within the Savannah District portion of the AIWW.

**Reach** - A segment of the channel/waterway defined by river mile stations

**Savannah District Portion of the AIWW** – That portion of the AIWW situated between Port Royal Sound, South Carolina, (mile 552) on the north and Cumberland Sound (mile 713) on the South, which is located at the Georgia-Florida border. The 161-mile section of the AIWW within Savannah District is comprised of a 24-mile section in the State of South Carolina with the remaining 137 miles located in the State of Georgia. The Savannah portion of the AIWW was initially authorized by the River and Harbor Act of 1882 and modified in 1892, 1896, and 1936. Dredging of the 12-foot deep channel between Beaufort, South Carolina, and Fernandina,

Florida, was initiated in 1940. The widths of the AIWW were to be 90 feet in land cuts and narrow streams and 150 feet in open waters. Dredging reach Cumberland River to Cumberland Sound (SAV-36), Mile 707-713, is located near Naval Submarine Base Kings Bay and is maintained by the US Navy.

Appendix B  
Results of Investigations

1979-1980 Survey

A reconnaissance level terrestrial and underwater archaeological investigation of Savannah District's portion of the AIWW was conducted by Texas A&M University in 1979-1980 (Garrison and Tribble 1981). Seventeen areas containing archaeological sites were identified or re-recorded. A review of the maps and tract locations reveals that eight of the locations are not associated with any disposal tract, but were areas noted in the river bank. These areas are outside of the authorized AIWW navigation channel and project area. Three locations were noted as redeposited material (CRL-10-AIWW, CRL-11-AIWW and CRL-12-AIWW), and two sites (CRL-01-AIWW and CRL-02-AIWW) are listed as within tract SC-3, but are actually located just east of the boundary. Only two locations, CLR-04-AIWW and CRL-16-AIWW, are located within disposal or easement tracts. Neither of these two locations has an official site number or form associated with it. No further investigations of any kind were conducted at any of the sites. Figures 8-12 show the locations of the sites in relation to the tracts.

SITE NAME/NUMBER	DISPOSAL AREA	LOCATION	DESCRIPTION	NRHP STATUS
CRL-01-AIWW	Adjacent to SC -3	Ramshorn Creek, Beaufort Co., SC	Shell scatter and ballast	undetermined
CRL-02-AIWW	Adjacent to SC-3	Ramshorn Creek, Beaufort, Co, SC	Shell scatter/shell deposits in bank	Undetermined
CRL-03-AIWW	none	Lands End Point, Beaufort, Co., SC	Shell lens with cultural material	Undetermined
CLR-04-AIWW	In Parcel 4	Cumberland Island, Camden Co., GA	Dense shell midden	Undetermined
CRL-05-AIWW	Adjacent to Parcel 4	Cumberland Island, Camden Co, GA	N/A	Undetermined
CRL-06-AIWW	None	Fort Frederica, Glynn Co., GA	Shell scatter with historic cultural material	Undetermined
CRL-07-AIWW	None	Front River/Sapelo River, McIntosh Co., GA	Ballast stone, historic artifacts such as flint nodules, ceramic fragments	Undetermined
CRL-08-AIWW	None	Front River/Sapelo River, McIntosh Co., GA	Ballast stone, historic artifacts such as flint nodules, ceramic fragments	Undetermined

Site Name/Number	Disposal Area	Location	Description	NRHP Status
CRL-09-AIWW	None	Front River/Sapelo River, McIntosh Co., GA	Ballast stone, historic artifacts such as flint nodules, ceramic fragments	Undetermined
*CRL-10-AIWW	Tract 24A	Front River, McIntosh Co., GA	Ballast stone, historic artifacts such as flint nodules, ceramic fragments	Undetermined
*CRL-11-AIWW	Tract 24 A	Disposal Tract 24-A, McIntosh Co., GA	Ballast stone, historic artifacts such as flint nodules, ceramic fragments	Undetermined
*CRL-12-AIWW	Tract 24 A	Disposal Tract 24-A, McIntosh, Co., GA	Ballast stone, historic artifacts such as flint nodules, ceramic fragments	Undetermined
CRL-13-AIWW	None	Burnside River/Moon River, Chatham Co., GA	Shell Scatter/tabby/mortar	Undetermined
CRL-14-AIWW	None	Burnside River/Moon River, Chatham Co., GA	Tabby	Undetermined
CRL-15-AIWW	Adjacent to 13 – A	Skidaway Narrows, Chatham Co., GA	Historic grave marker dated 1900/shell scatter	Undetermined
CRL-16-AIWW	In 11-C	Skidaway Narrows, Chatham Co., GA	Shell scatter mixed with historic material	Undetermined
CRL-17-AIWW	none	Ramshorn Creek, Beaufort Co., SC	Historic material	Undetermined

\*Located within areas surveyed in 2012. Areas identified in 1979 as redeposited material

#### 2012 Survey

Savannah District contracted with Panamerican Consultants, Inc. in 2012 to conduct a remote sensing survey of the navigation channel in 12 reaches, which make up approximately 40 miles of the 151-mile AIWW maintained by the District. The reaches selected for investigation were those that have been and are most likely to be dredged. The reaches included:

- St. Augustine Creek (AIWW Mile 577.4-578.2)
- Wilmington River (AIWW Mile 578.2-585.5)
- Hells Gate (AIWW Mile 600.8-602.4)
- Creighton Narrows (AIWW Mile 640-642.9)
- Doboy Sound (AIWW Mile 648.2-649.5)
- North River Crossing (AIWW Mile 649.5-651.4)
- Rockedundy River (AIWW Mile 651.4-652.7)
- South River (AIWW Mile 652.7-653.5)

- Little Mud River (AIWW Mile 653.5-656.4)
- Altamaha Sound (AIWW Mile 656.4-660.1)
- Buttermilk Sound (AIWW Mile 660.1-664.5)
- Jekyll Creek (AIWW Mile 680.9-685.9).

A review of the sites identified by Garrison and Tribble (1981) revealed that only three of the recorded sites were located in the 2012 survey areas. All were within the Creighton Narrows reach. The sites include CRL-10, 11, and 12. The areas were scrutinized for historic resources based on the descriptions in the 1981 report, but none were recorded during the 2012 investigation. However, several odd positive relief features were discovered near the previously recorded locations. More detail about these sites is below.

A total of 473 magnetic anomalies, 575 sidescan sonar contacts, and 156 subbottom features were identified during the 2012 survey. After review of the survey data combined with archival research, five anomaly clusters were considered to potentially represent significant historic cultural resources and four sonar contacts and two subbottom features were considered to potentially represent significant prehistoric cultural resources.

Target #	Location	Potential Target Type
M-378, M459, 494	St. Augustine Creek	Shipwreck/historic
SS Contact 200	Creighton Narrows	Shipwreck/historic
M244, 246, 250, SS-175	Doboy Sound	Shipwreck/historic
M150, 176	Altamaha Sound	Shipwreck/historic
M126, 53, 54, 96	Jekyll Creek	Shipwreck/historic
SS Contact 282	St Augustine Creek	Prehistoric
SS Contact 57	St Augustine Creek	Prehistoric
SS Contact 23	Creighton	Prehistoric
SB feature 7 and 20	Rockedundy, South & Little Mud River	Prehistoric
SB feature 49	Rockedundy, South & Little Mud River	Prehistoric
SS contact 41	Jekyll Creek	Prehistoric

#### *Historic Targets*

The above targets were investigated by divers in June 2012. Magnetic anomaly cluster M-378, M-459, and M-494 correlated on maps with the location of a Civil War obstruction. Investigation of the cluster, however, revealed a large area of miscellaneous debris that included a solid 1 ft x 3 ft long piece of iron, a 3 ft x 3 ft metal plate, an iron rebar-reinforced concrete block and a large coil of wire rope. There was no evidence of a Civil War obstruction. The investigation of the remaining magnetic anomalies thought to represent shipwrecks or other historic sites were determined to be modern debris, were not relocated as the target source had been removed, or represented the hard clay bottom.

Sidescan sonar Contact 23 in Creighton Narrows was considered a possible shell midden that possibility correlated with the sites recorded by Garrison and Tribble (1981). Diver inspection confirmed only live oysters growing in place. No cultural material was located.

#### *Prehistoric Targets*

Four sonar contacts and two subbottom features were considered to potentially represent significant prehistoric cultural resources. Diver investigations revealed that none of the targets contained prehistoric cultural material. However, sidescan sonar contacts 282 and 57 appear to be a large paleo-landform that may or may not be conducive for the presence of prehistoric sites. Tree stump samples collected from the targets resulted in a date of 6000-8000 years old. Avoidance of the areas is recommended. Additional mapping, sampling, and probing is recommended if avoidance is not possible.

Subbottom features 7/20 and 49 in the Rockedundy, South and Little Mud Rivers are similar features consisting of alternating layers of gray silty clay, oyster shell, gray silty clay, and oyster shell. No prehistoric or historic cultural material was found in either location. No definitive interpretation of the features was made. Additional sampling by geoarchaeological vibracore and radiocarbon age is recommended if the features cannot be avoided during dredging.



Figure 1. Operational Reaches SAV-1 - SAV-7



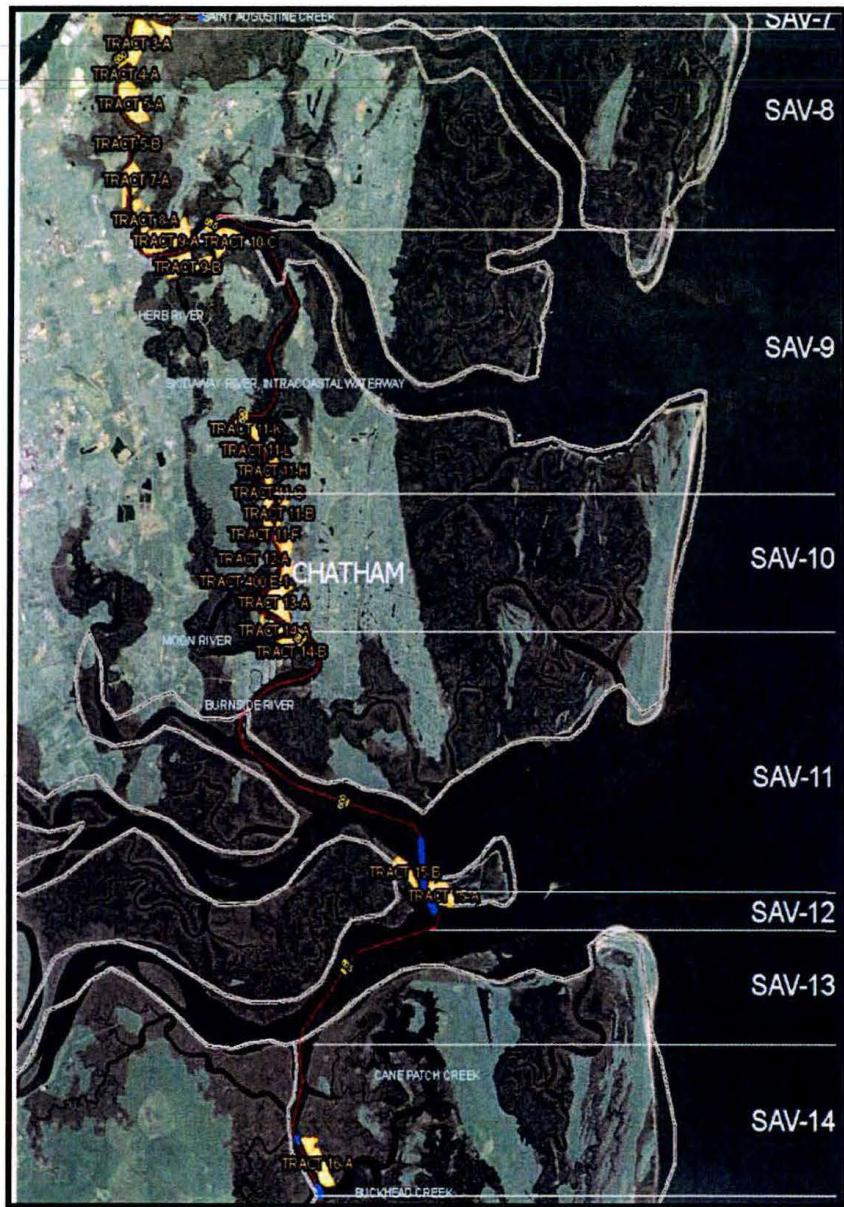


Figure 2. Operational Reaches SAV-8 - SAV-14

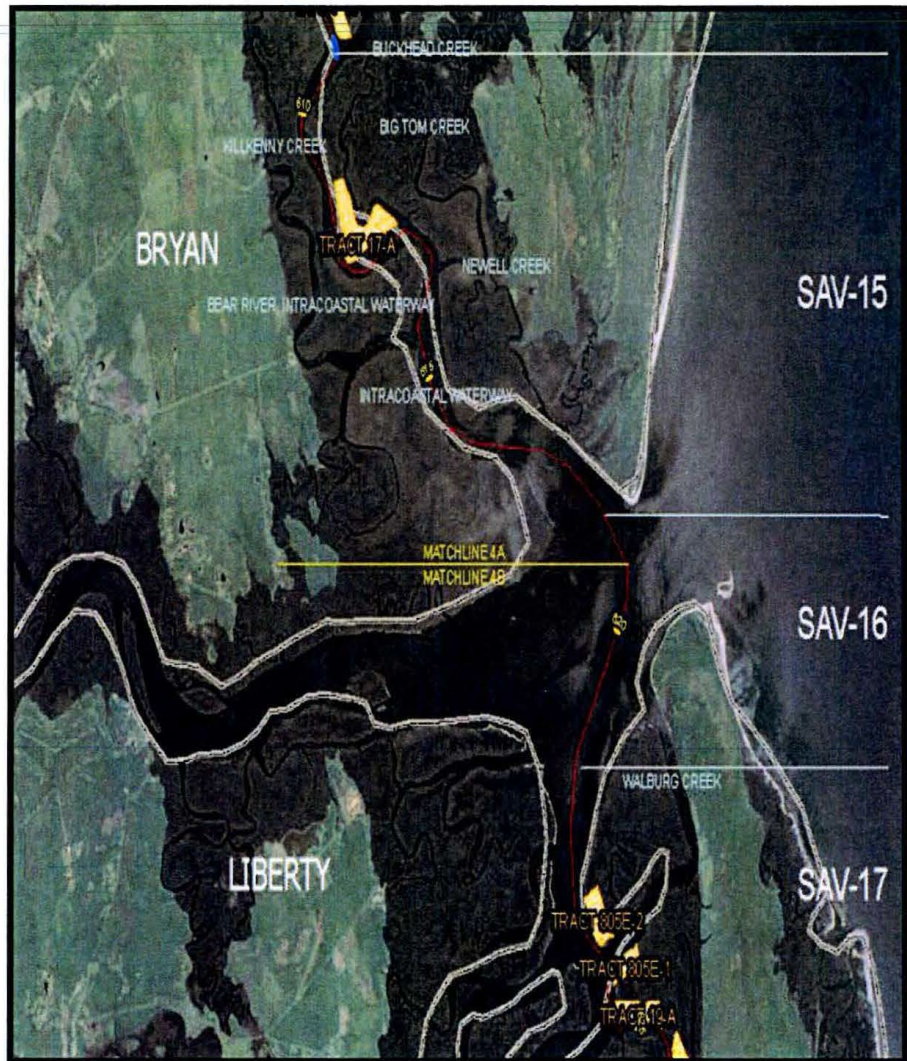


Figure 3. Operational Reaches SAV-15 - SAV-17



Figure 4. Operational Reaches SAV-18 - SAV-21



Figure 5. Operational Reaches SAV-22 - SAV-30

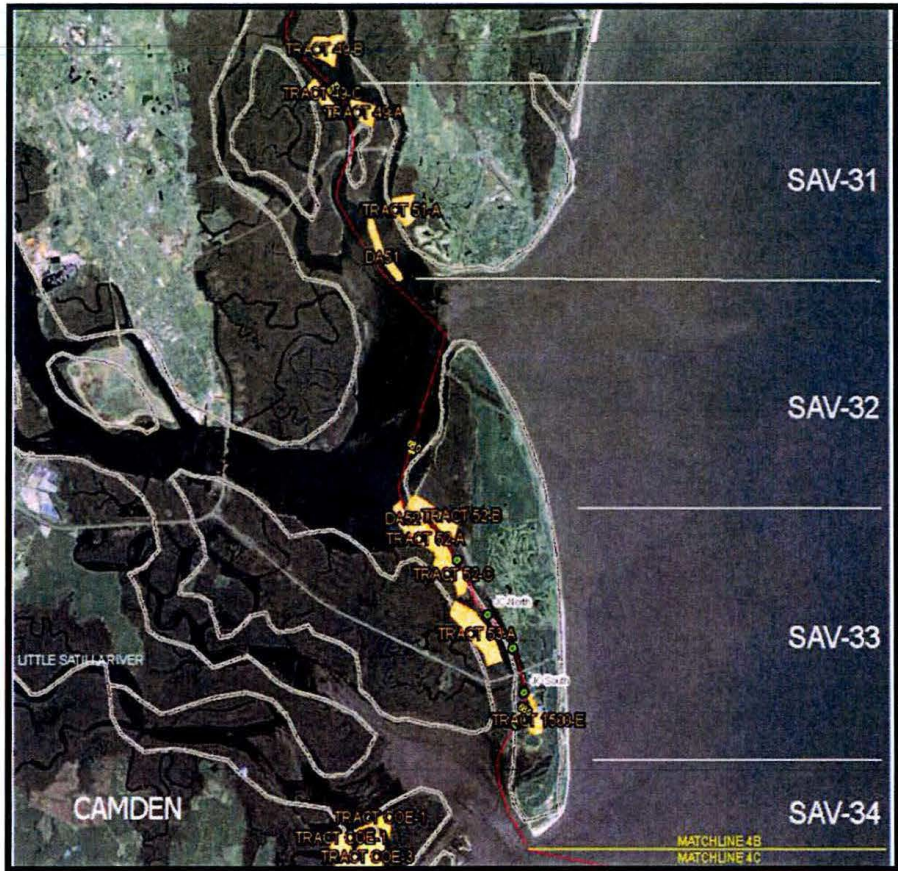


Figure 6. Operational Reaches SAV-31 - SAV-34

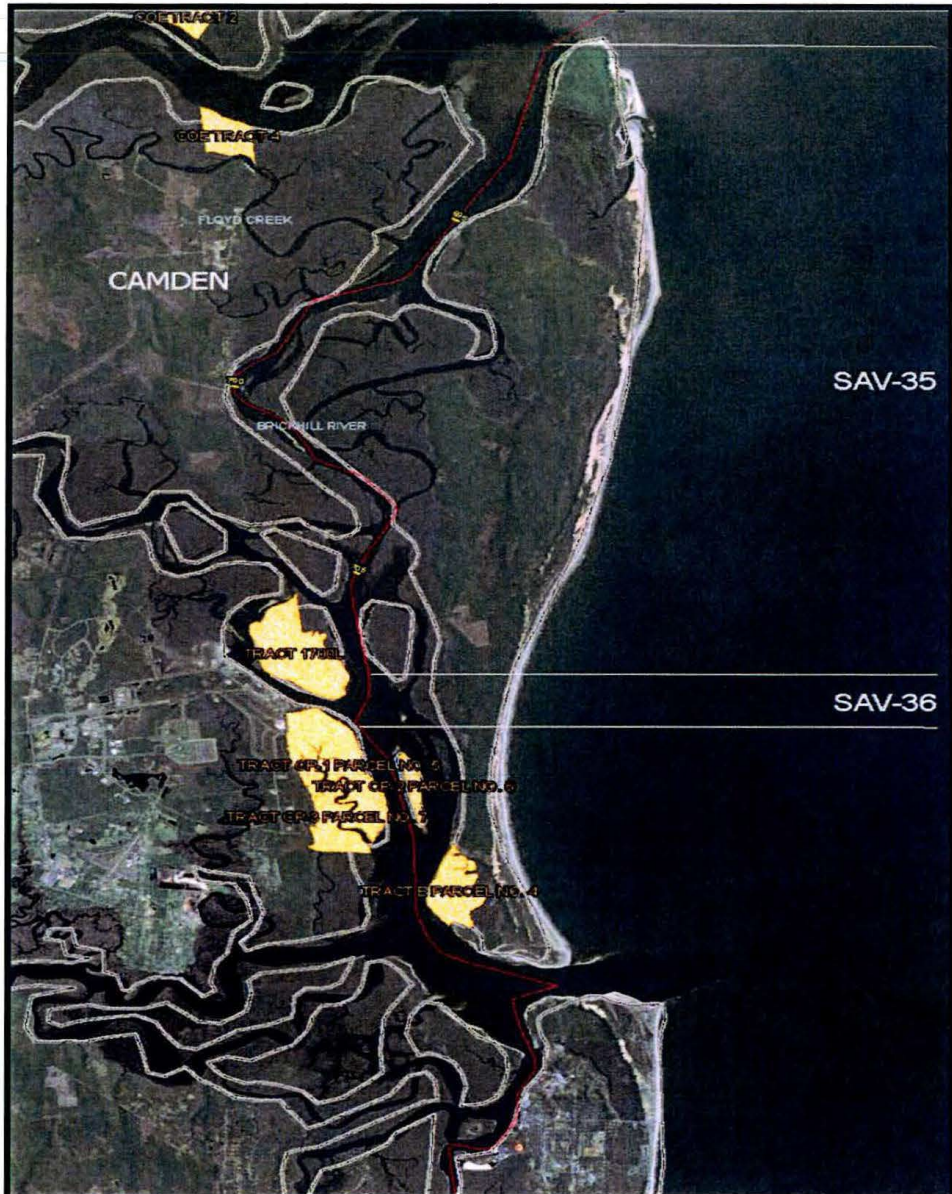


Figure 7. Operational Reaches SAV-35 - SAV-36

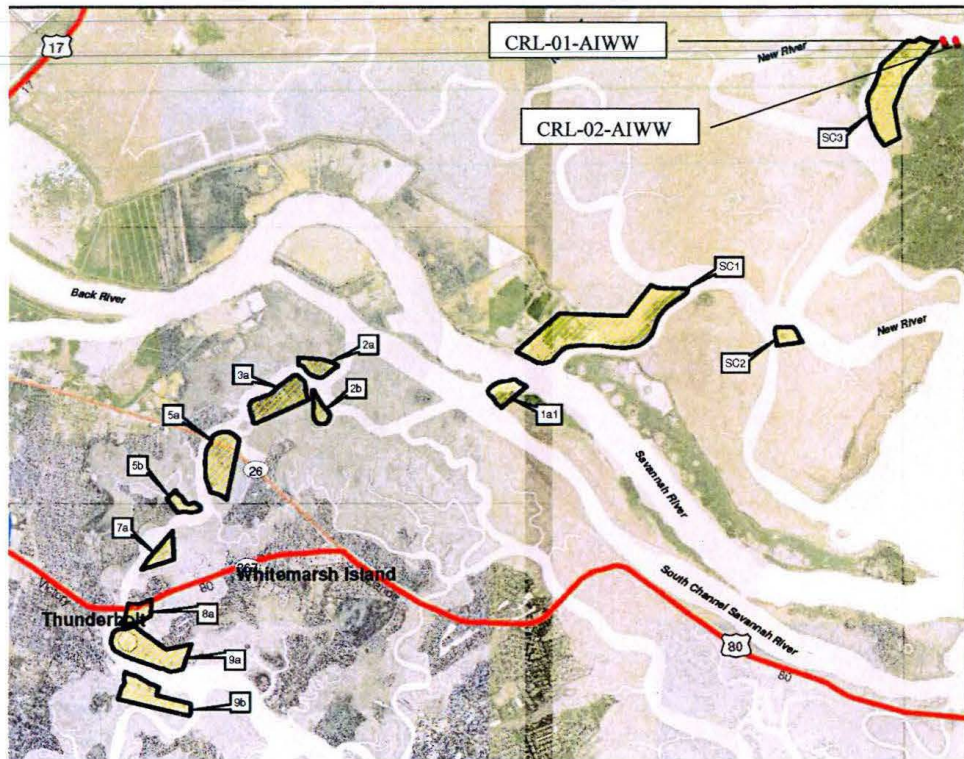


Figure 8. Texas A&M Site Locations near Tract SC-3



Figure 9. Texas A&M Site Locations in and near Parcel B4





Figure 10. Texas A&M Site Locations in Tract 24-A

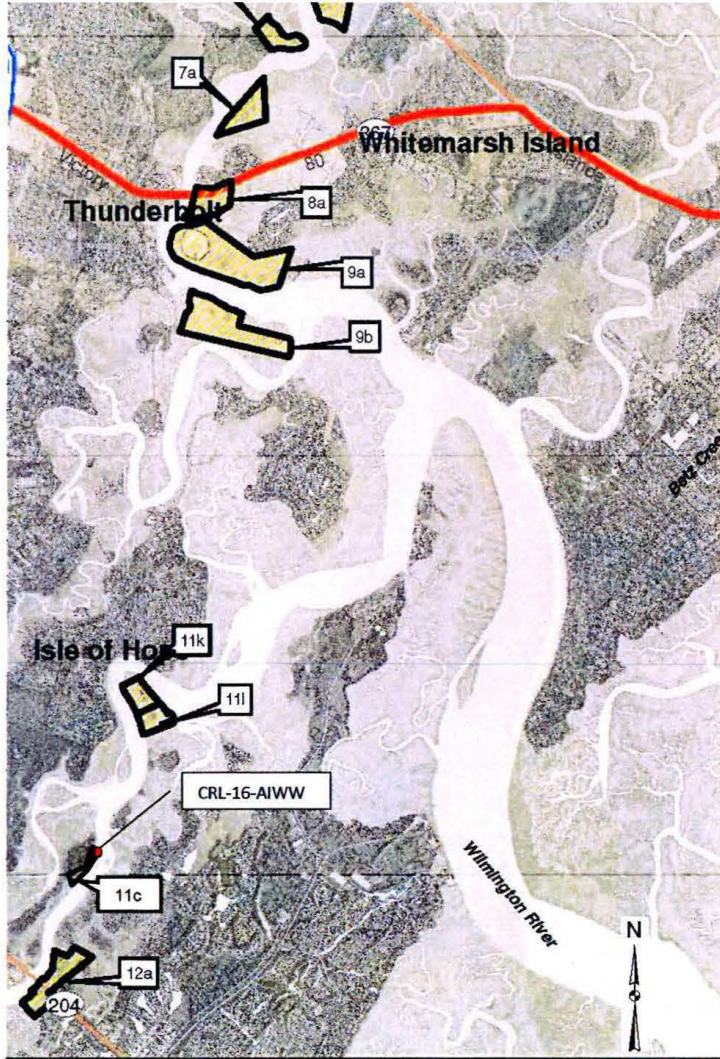


Figure 11. Texas A&M Site Location in Tract 11-C

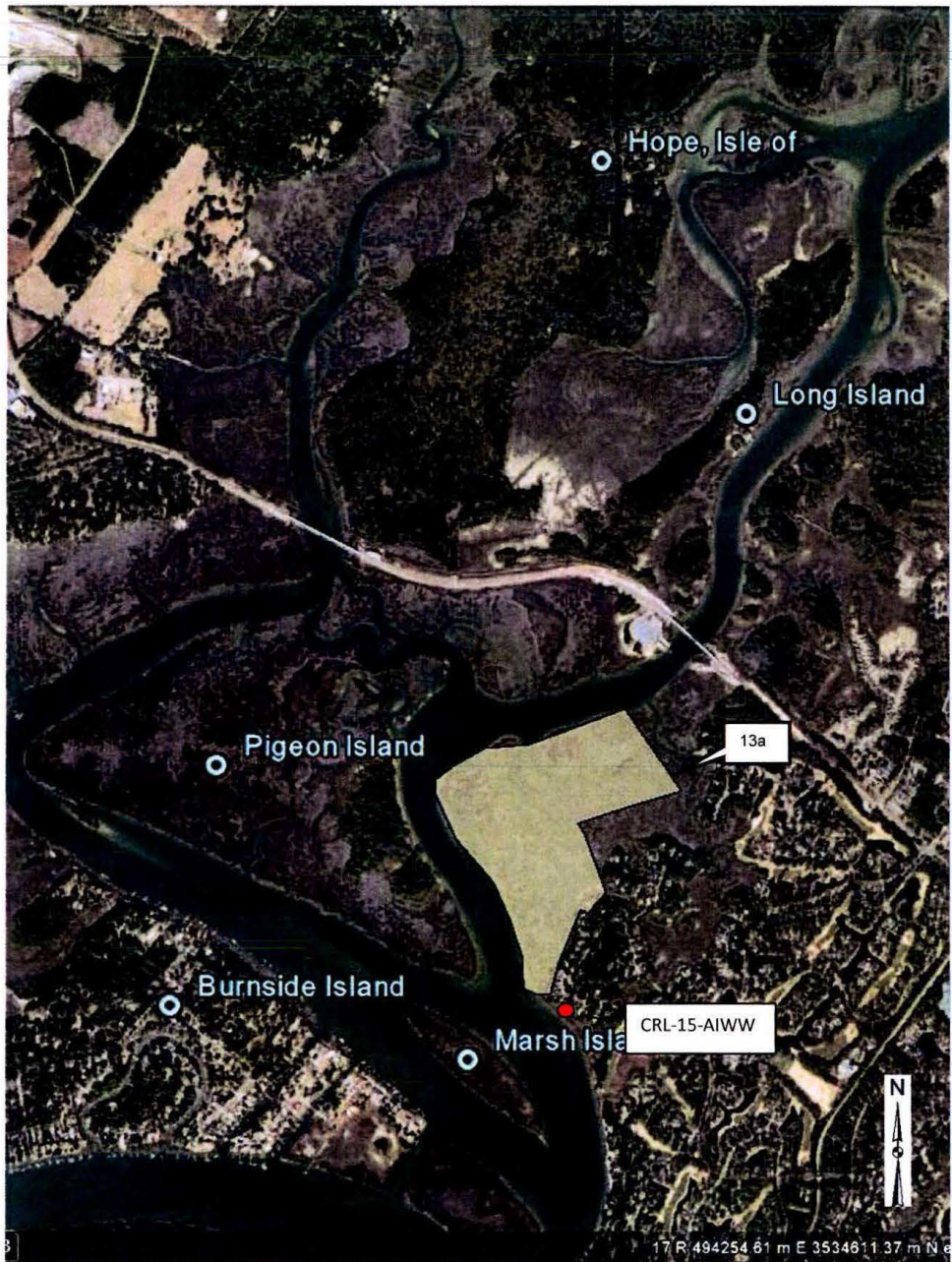


Figure 12. Texas A&M Site Location near Tract 13-A



HISTORIC PRESERVATION DIVISION

MARK WILLIAMS  
COMMISSIONER

October 22, 2012

DR. DAVID CRASS  
DIVISION DIRECTOR

William G. Bailey  
Chief, Planning Division  
Savannah District, Corps of Engineers  
100 W. Oglethorpe Avenue  
Savannah, Georgia 31401  
Attn: Julie Morgan

**RE: Dredged Material Management Plan: Atlantic Intracoastal Waterway between Port Royal Sound and Cumberland Sound, 161 miles Chatham, Bryan, Liberty, McIntosh, Glynn, and Camden Counties, Georgia HP-121015-001**

Dear Mr. Bailey:

The Historic Preservation Division (HPD) has reviewed the draft survey report *Remote Sensing Survey and Diver Investigations, Atlantic Intracoastal Waterway, Chatham, Bryan, Liberty, McIntosh, Glynn, and Camden Counties, Georgia, and Portions of Beaufort County, South Carolina*, dated August 2012 and prepared by Panamerican Consultants, Inc. Our comments are offered to assist the US Army Corps of Engineers (USACE) in complying with the provisions of Section 110 and Section 106 of the National Historic Preservation Act (NHPA).

Based on the information contained in the remote sensing survey/diver investigation report and USACE comments, HPD concurs with the finding that all targets investigated were negative for historic and prehistoric cultural materials. HPD also concurs with the recommendation that three areas, sidescan sonar contacts C282 and C47, sub-bottom feature 7/20, and sub-bottom feature 49, are areas that could potentially contain the presence of prehistoric sites. Regarding sidescan sonar contacts C282 and C47, which represent a paleolandform located at a depth ranging from 20 to 28 feet below water surface, HPD concurs that as the proposed dredging depth is 12 feet, this site would not be affected by the proposed dredging activities. HPD also concurs with the recommendation that sub-bottom feature 7/20, a mound containing oyster shell lenses located at 5 and 14 feet below water surface be avoided or additional investigations and dating would be required. Furthermore, regarding Feature 49, a mound containing shell lenses that is located at a depth of 14 feet below water surface, HPD concurs that as the proposed dredging would occur to a depth of 12 feet below water surface, it will not be affected by the proposed dredging activities.

Please submit one electronic copy of the report to HPD. Please ensure the electronic copy is an optical character enabled .pdf. For your information, the electronic file will be sent to the Georgia Archaeological Site File at the University of Georgia, Athens for permanent retention.

Please refer to project number **HP-121015-001** in any future correspondence concerning this project. If we may be of further assistance, please do not hesitate to contact Bob Entorf, Review Archaeologist, at (404) 651-6775, or me at (404) 651-6624.

Sincerely,

A handwritten signature in cursive script that reads "Elizabeth Shirk".

Elizabeth Shirk  
Environmental Review Coordinator

ES:jad

**Atlantic Intracoastal Waterway Federal Navigation Channel  
Cumberland Dividings Maintenance Dredging  
Camden County, Georgia  
Draft Environmental Assessment and FONSI**

**B.2**

**Cultural Resources Assessment**

**U.S. ARMY CORPS OF ENGINEERS  
SAVANNAH DISTRICT  
100 WEST OGLETHORPE AVENUE  
SAVANNAH, GEORGIA 31401  
January 2023**



## **Introduction:**

The management of cultural resources is regulated under Federal laws such as the National Historic Preservation Act (NHPA) of 1966 (54 U.S.C. §300101 *et seq.*), the Archaeological and Historic Preservation Act of 1974 (54 U.S.C. §§312501- 312508), the American Indian Religious Freedom Act of 1978 (42 U.S.C. §§1996 and 1996a), the Archeological Resource Protection Act of 1979 (16 U.S.C. §§470aa-470mm), NEPA (42 U.S.C. §4321 *et seq.*), the Native American Graves Protection and Repatriation Act of 1990 (25 U.S.C. §3001 *et seq.*), the Abandoned Shipwreck Act of 1987 (43 U.S.C. §§2101-2106), and the Sunken Military Craft Act of 2004 (10 U.S.C. § 113 *et seq.*).

Cultural resources considered in this Environmental Assessment are those defined by the NHPA as properties listed, or eligible for listing, on the National Register of Historic Places (NRHP) and are referred to as historic properties. Historic properties include buildings, structures, sites, districts, objects, cultural items, Indian sacred sites, archaeological artifact collections, and archaeological resources (36 CFR 800.16(l)(1)). Cultural resources also include resources with unknown NRHP eligibility status.

The area of potential effect (APE) for cultural resources includes areas located within Savannah District's portion of the AIWW where the proposed DMMP actions would occur. This would include activities such as dredging of navigation channels, actions related to the placement of the dredged material and construction of new access roads, construction staging areas, and any other ground disturbing activities.

## **Analysis of Effects:**

In order to provide a regional context and to assess whether resources could be encountered during implementation of the proposed DMMP actions, the prehistory and history of the Georgia coastal area, along with cultural resources that are known to occur in the general area are discussed briefly below.

### **Paleoindian (12,000 – 8,000 BC)**

Modern Georgia has been inhabited by humans since the end of the Pleistocene era nearly 12,000 years ago. The earliest known inhabitants are referred to as Paleoindians who were thought to be nomadic hunter-gathers organized at the band level of society. The Paleoindian artifact assemblage consists of fluted, lanceolate projectile points made from quartz, quartzite, metavolcanic rock, Ridge and Valley chert, and Coastal Plain chert. Paleoindian sites are generally found in Georgia's interior region rather than the coastal areas.

### **Archaic Period (8,000 – 1,000 BC)**

The Archaic is the most extended period of human occupation in Georgia. The period is divided into three distinct phases: Early (8,000 – 6,000 BC), Middle (6,000 – 4,000 BC) and Late (4,000 – 1,000 BC). Lifeways during the Archaic period were likely influenced

by climate changes as groups adapted to changing sea levels and temperatures. The Archaic sub-periods are distinguished based upon projectile point typologies. Stone tools such as axes and adzes for woodworking, and mortars and grinding stones for food preparation, appear in the archaeological record. Ceramics do not appear until the Late Archaic period.

Archaeological evidence of the earliest human occupation of the Georgia Coast and the barrier islands dates to about 4,000 years ago to the Late Archaic period (Alexander et al. 2008). Archaic populations exploited estuarine resources, particularly the Eastern oyster (*Crassostrea virginica*), and large shell-bearing sites, known as 'shell rings,' are commonly found dating to this period. The single most diagnostic Late Archaic artifact is St. Simon's fiber-tempered ceramics in which plant material was added to the clay. Other common diagnostic artifacts include Savannah River stemmed points, net sinkers, steatite vessels, and shell ornaments.

### **Woodland Period (1,000 BC – AD 1,000)**

During the Woodland period, many of the Late Archaic lifeways, such as reliance on hunting and gathering activities and exploitation of estuarine resources, continued. As the period progressed, reliance on cultivation, especially corn, increased and burial practices became more elaborate especially in inland locations. Many of the larger barrier islands of Georgia were not occupied or occupied less intensively than during the Late Archaic (Thompson and Turck 2010). The archaeological record, as evidenced by large shell middens, indicates humans exploited the coastal and estuarine environment. Small, thin shell middens are found near shore while larger sites are often located near freshwater sloughs or marshes. Population on the larger barrier islands of Georgia increased during this period (Thompson and Turck 2010). Diagnostic lithic artifacts of the Early Woodland period include stemmed and triangular types and ceramics are represented by Refuge and Deptford pottery types which are sand tempered rather than fiber tempered.

On the southeast Atlantic seaboard, the Late Woodland (AD 500-1000) is considered to be a transitional period to the Early Mississippian. That may be a result of the fact that Late Woodland sites tend to be sparse. Grog-tempered ceramic wares such as Wilmington and St. Catherines' phases and small straight-sided triangular points appear, the result of the invention of the bow and arrow, are commonly found at Late Woodland sites.

### **Mississippian Period (AD 1000 - 1550)**

During the Mississippian Period more permanent settlements developed, and the material culture inventory and ethnographic accounts indicate a significant increase in social and religious practices. On the Georgia mainland, the Mississippian Period is characterized by the construction of large temple mounds inside fortified villages. On the barrier islands, villages with smaller mound complexes are more commonly found (Alexander et al. 2008). At the Kenan Field site (9MC90), located on Sapelo Island, archaeologists located several mounds in addition to the remains of structures and a plaza. This archaeological

evidence attests to a relatively high level of socio-political organization on the barrier island (Crook 1986).

Ceramic types found during the period are St. Catherines (AD 1000-1150), similar to Wilmington ceramics, with smaller grog pieces as temper, Savannah (AD 1150- 1300) and Irene Phase (AD 1300-1550). Savannah Phase ceramics are similar to the earlier Catherines' ceramics but are tempered with grit instead of grog. The Irene Phase represents the end of the late prehistoric period on the Georgia coast. Ceramics are exclusively grit tempered, but the decorative surface treatments change from the earlier Savannah Phase. Vessel rims can be quite ornate, with incising, burnishing, and complicated stamping all appearing on the vessel walls. Archaeological evidence from Sapelo Island, Georgia has shown that Irene Phase ceramics continued into the early historic period.

### **Historic Period (AD 1550 – present)**

During the Contact/Early Historic period in Georgia, aboriginal groups, namely the Guale, experienced first contact with European explorers and missionaries. The Spanish established missions along the coast near the Guale towns in an attempt to convert the native population to Christianity. Several coastal Guale towns were evacuated or abandoned as conflicts escalated between the Spanish and the English in the late 1600s. By the end of the seventeenth century all of these missions had been abandoned as the Spanish focused their attentions on Florida.

In 1733, James Oglethorpe arrived in what is now Savannah, to establish the Georgia colony for Great Britain. In May 1733, the Indians ceded all lands between the Savannah and Altamaha Rivers with the exceptions of Ossabaw, St. Catherines and Sapelo Islands and a small tract near Savannah to the Trustees of Georgia by means of the Articles of Friendship and Commerce Treaty. Shortly thereafter more colonists arrived and founded the town of Frederica on St. Simons Island. In addition to the town, a defensive fortification, Fort Frederica, was constructed on the island to help protect against Spanish invaders from Florida.

Most of the land granted to the Georgia colonists during the 1750s and 1760s was located along the coast, either on the mainland or islands as plantations and farms were established to produce rice and other cash crops such as indigo and hemp. By 1760 all of the good coastal land between the Savannah and Altamaha rivers had been granted as far inland as the Indian boundary and more land was obtained from the Creek Indians to accommodate more settlers. In 1763 the Creeks ceded approximately 2,400,000 acres, which freed up coastal areas between the Altamaha and the St. Mary's rivers, plus some additional land behind the original coastal Indian cession. Sea Island cotton, first introduced to Georgia in 1786, grew best on the Sea Islands and on the interior mainland within 30 miles of the coast. Sea Island cotton was replaced by rice as the staple crop after the price of cotton declined in the 1820s. After the Civil War, industry and manufacture, particularly cotton mills in interior Georgia and the turpentine industry near



the coast, surpassed the production of cotton. Today tourism is one of the leading industries in coastal Georgia and the Sea Islands.

### **Status of Cultural Resource Inventories**

Section 110 of the NHPA requires all federal agencies to inventory lands under their jurisdiction or control for cultural resources so the resources can be managed effectively. Savannah District previously conducted a reconnaissance level survey of selected portions of the AIWW channel and placement tracts through Texas A&M (Garrison and Tribble 1981). The survey identified 17 new and previously identified archaeological sites in South Carolina and Georgia, and the researchers conducted limited remote sensing in some of the reaches and identified targets that may be related to historic shipwrecks. Through this investigation, site CLR-04-AIWW was identified within the placement tracts in Parcel B4, on Cumberland Island, Georgia. No further investigations were conducted to determine National Register eligibility of these sites, no recommendations for investigations were provided or implemented, and no official state site numbers were acquired for any of the locations.

As a follow-up to the 1981 survey, further investigations were performed in this area in 2012 by Panamerican Consultants, Inc. to better define and assess the identified targets and sites (James et al. 2012). Additional remote sensing surveys of the reaches and diver investigations were performed. All potentially identified significant historic cultural resource targets were negative for cultural resources sites.

*Archaeological Sites.* A review of Georgia's Natural, Archaeological and Historic Resources GIS (GNAHRGIS) indicates that there is one recorded archaeological site located on the placement tracts currently managed by Savannah District for dredged material placement in Georgia. The site is located within Parcel 4, which is on the southwest portion of Cumberland Island, Camden County, Georgia. There are several recorded sites within a half to one-mile radius of the tract located in Camden County, but these sites will not be impacted by any proposed actions relating to the AIWW management. No recorded sites are recorded within the navigation channel in Georgia.

A review of a comprehensive shipwreck inventory for the AIWW maintained by Ms. Judy Wood (U.S. Army Corps of Engineers Archaeologist, retired), lists numerous shipwrecks lost within the waterway. No shipwreck sites are recorded within the Cumberland reach in that inventory, GNAHRGIS, or the National Oceanic and Atmospheric Administration's Automated Wreck and Obstruction Information System.

*Architectural Resources.* There are no recorded architectural resources, such as buildings, structures or objects that have been determined eligible or of unknown NRHP status, within the placement tracts or the navigation channel in Georgia.

*American Indian Resources.* An ethnographic overview study identified federally recognized Tribes that are potentially associated with the Savannah District's Civil Works boundary, which consists of the Savannah River drainage (Coco 2009). These American

Indian Tribes include: the Alabama-Coushatta Tribe of Texas, the Alabama-Quassarte Tribal Town of the Creek Nation of Oklahoma, the Catawba Indian Nation, the Cherokee Nation of Oklahoma, the Coushatta Tribe of Louisiana, the Eastern Band of Cherokee Indians, the Kialegee Tribal Town of the Creek Nation of Oklahoma, the Muscogee (Creek) Nation of Oklahoma, the Poarch Band of Creek Indians, the Seminole Tribe of Florida, the Seminole Nation of Oklahoma, the Thlopthlocco Tribal Town, and the United Keetoowah Band of Cherokee Indians of Oklahoma (Coco 2009). Currently, no Tribe has identified a property of traditional religious or cultural importance to Savannah District that may be located on any of the dredged material placement tracts or in the navigation channel.

Dredging and the placement of dredged material associated with the proposed alternatives will have no effect on cultural resources.

### **References:**

Alexander, Clark, Mike Robinson, and Chester Jackson. 2008. Threatened Archaeologist, Historic and Cultural Resources of the Georgia Coast: Identification, Prioritization and Management Using GIS Technology. Prepared for the Georgia Coastal Zone Management Program, Georgia Department of Natural Resources, Coastal Resource Division. Prepared by Skidaway Institute of oceanography and Applied Coastal Research Laboratory, Georgia Southern University.

Clarke, Douglas, and Tina Miller-Way. 1992. An environmental assessment of the effects of open-water disposal of maintenance dredged material on benthic resources in Mobile Bay, Alabama. Miscellaneous Paper D-92-1. Vicksburg, MS: US Army Engineer Waterways Experiment Station.

Coco, J. J. 2009. Native American Traditional Ranges in Georgia and Parts of South Carolina: A Report Prepared to Support NAGPRA Consultation. Submitted by New South Associates, Stone Mountain, Georgia. For US Army Corps of Engineers, Savannah District.

Crook, M. R., Jr. 1986. Mississippi Period Archaeology of the Georgia Coastal Zone. University of Georgia Laboratory of Archaeology Series Report Number 23.

Garrison, Ervan G. and James S. Tribble. 1981. A Reconnaissance Survey of the Atlantic Intracoastal Waterway, Georgia. Prepared for the U.S. Army Corps of Engineers, Savannah District. Prepared by Texas A&M University.

Georgia Archeological Site File at the University of Georgia and the Georgia Department of Natural Resources. n.d. Georgia's Natural, Archaeological and Historic Resources GIS. Accessed August 3, 2022, <https://www.gnahrgis.org/>

James, Stephen R., Michael K. Faught, and Andrew D.W. Lydecker. 2012. Remote Sensing Survey and Diver Investigations, Atlantic Intracoastal Waterway, Chatham, Bryan, Liberty, McIntosh, Glynn, and Camden Counties, Georgia, and Portions of Beaufort County, South Carolina. Prepared for the U.S. Army Corps of Engineers, Savannah District. Prepared by Panamerican Consultants, Inc.

Thompson, Victor D. and John A. Turck. 2010. Island Archaeology and the Native American Economies (2500 B.C.–A.D. 1700) of the Georgia Coast. *Journal of Field Archaeology*. 35(3):283-297. (DOI: 10.1179/009346910X12707321358991)