

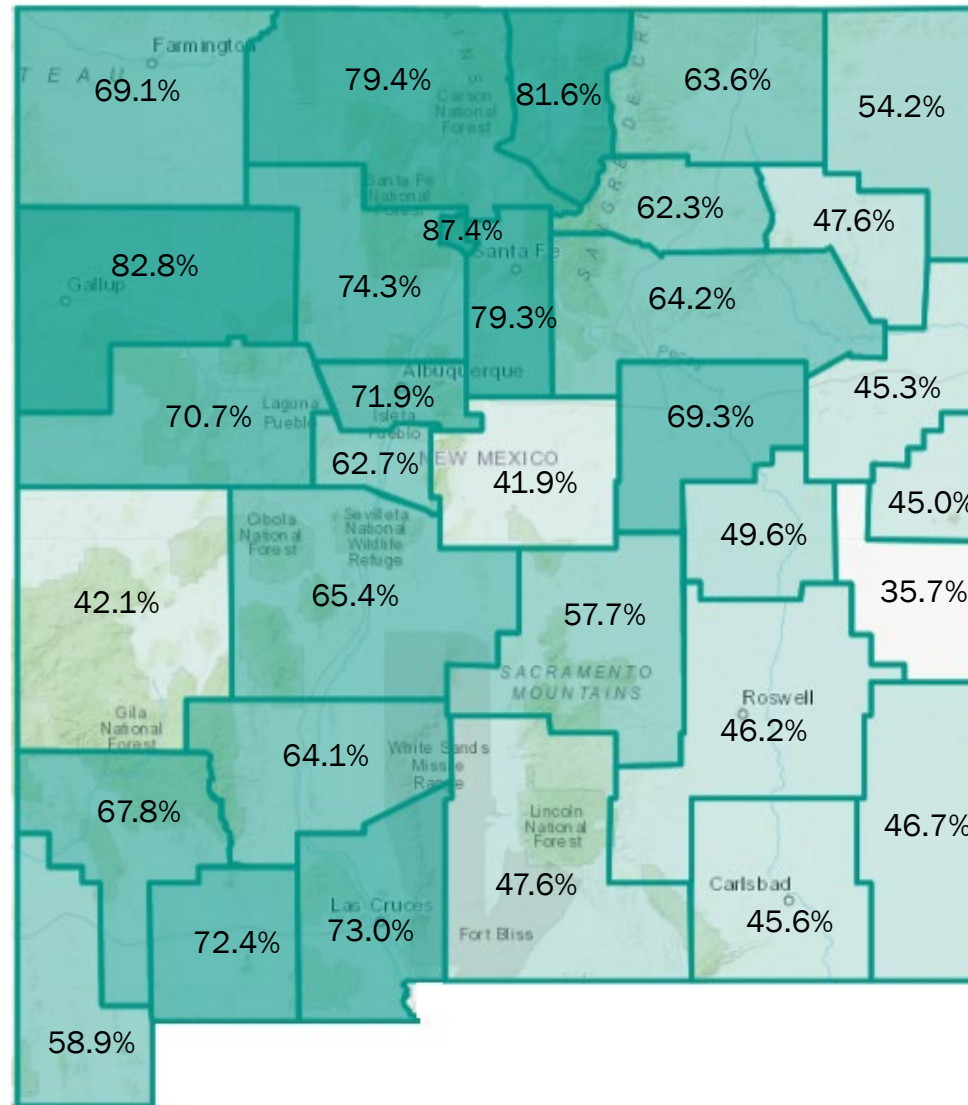
COVID-19 Day 547 Press Update

September 8, 2021

DOH Acting Secretary David R. Scrase, MD, MHSA
DOH Deputy Secretary Laura C. Parajón, MD, MPH
DOH State Epidemiologist Christine Ross, MD, MPH

Percent of Fully Vaccinated Individuals (18+)
by NM County, 09/08/21

- **78.3%** of New Mexicans (18+) and **61.5%** (12-17) have received at least a first dose
- **68.4%** of New Mexicans (18+) and **48.9%** (12-17) are fully vaccinated
- Coming soon: We are working on dashboard updates to reflect additional doses



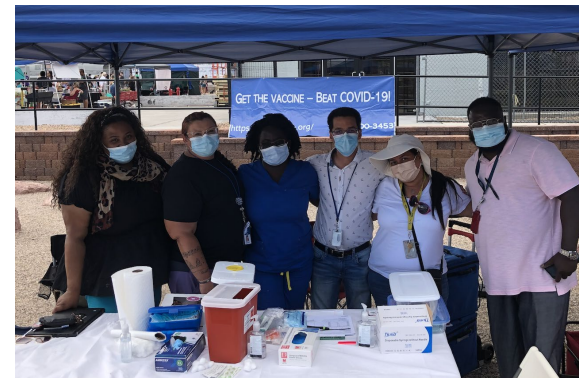
Source: [New Mexico COVID-19 Vaccine Dashboard](#) 09/08/21

Investing for tomorrow, delivering today.

Thank you to our mobile teams!

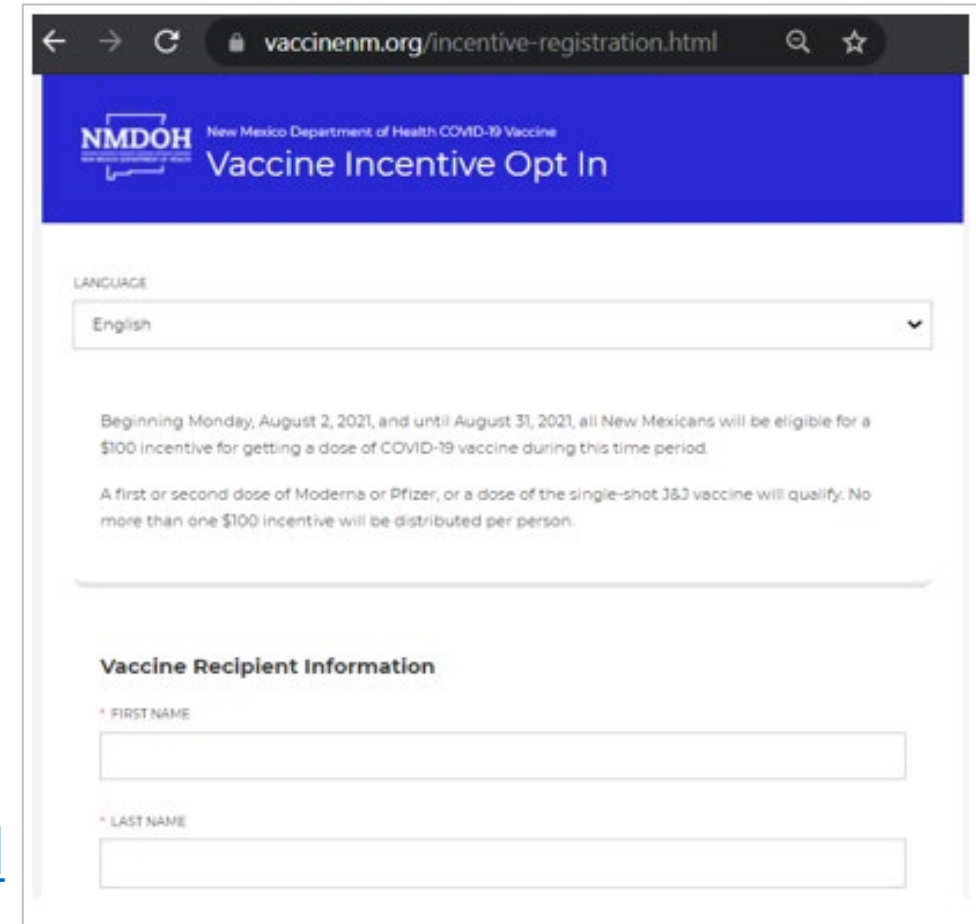
NM National Guard and FEMA

- Over 27,000 doses given
- Improved vaccine equity
- Community organizations, churches, and difficult to reach locations
- Visit VaccineNM.org to request a COVID-19 vaccine team for your event



The deadline to sign up for August \$100 vaccine incentive is this Friday!

- Any first or second shot of Pfizer or Moderna – or a first-and-only shot of J&J – during the month of August
- 3rd dose shots are not eligible
- No more than one \$100 incentive per person
- \$100 incentive available by email, text, or physical mail
- Email and text can only be spent online
- Physical mail can be spent anywhere, online or offline
- Register by 5 p.m. on September 10th:
<https://vaccinenm.org/incentive-registration.html>



The screenshot shows a web browser window with the URL `vaccinenm.org/incentive-registration.html`. The page header features the NMDOH logo and the text "New Mexico Department of Health COVID-19 Vaccine Vaccine Incentive Opt In". Below the header is a language selection dropdown menu currently set to "English". The main content area contains the following text: "Beginning Monday, August 2, 2021, and until August 31, 2021, all New Mexicans will be eligible for a \$100 incentive for getting a dose of COVID-19 vaccine during this time period. A first or second dose of Moderna or Pfizer, or a dose of the single-shot J&J vaccine will qualify. No more than one \$100 incentive will be distributed per person." Below this text is a section titled "Vaccine Recipient Information" with two input fields: "FIRST NAME" and "LAST NAME".

Booster doses

Purpose:

To “boost” waning immunity from vaccine

Who Qualifies?

No one yet

When Can I get the Booster?

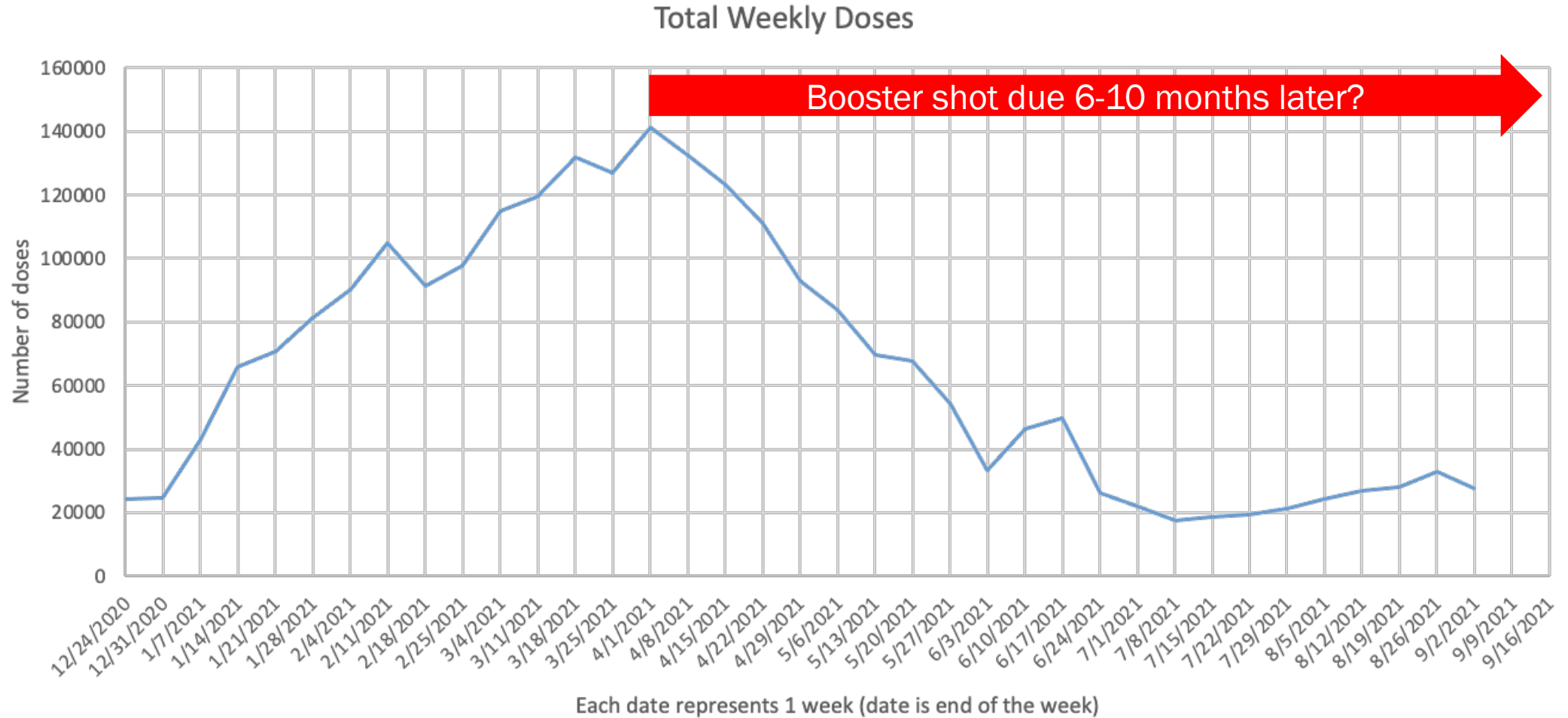
Still waiting for final data and recommendations from FDA and CDC later this month



“But with regard to the final decision - as we've said from the very beginning, that is going to be dependent on the FDA regulatory approval.”

-- NPR interview 9/7/21

Doses Given Weekly: 12/24/2020 to Present



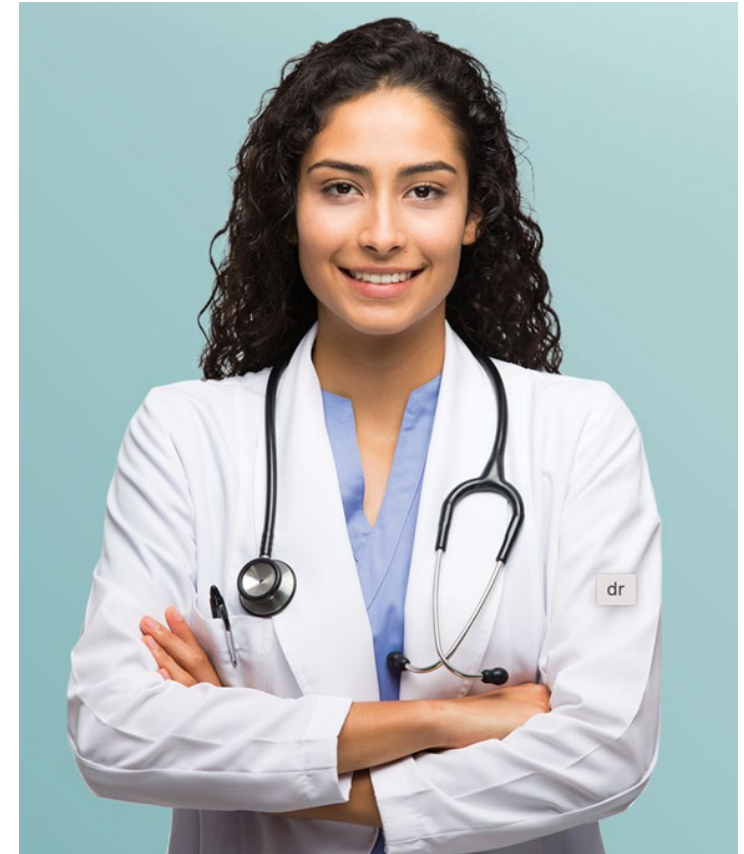
It's okay to get flu and COVID19 vaccine at the same time

- Flu and the COVID-19 vaccine can be administered together **AND** in the same arm
- Childhood vaccines and the COVID-19 vaccine can be administered together
- Getting multiple vaccines together is not uncommon



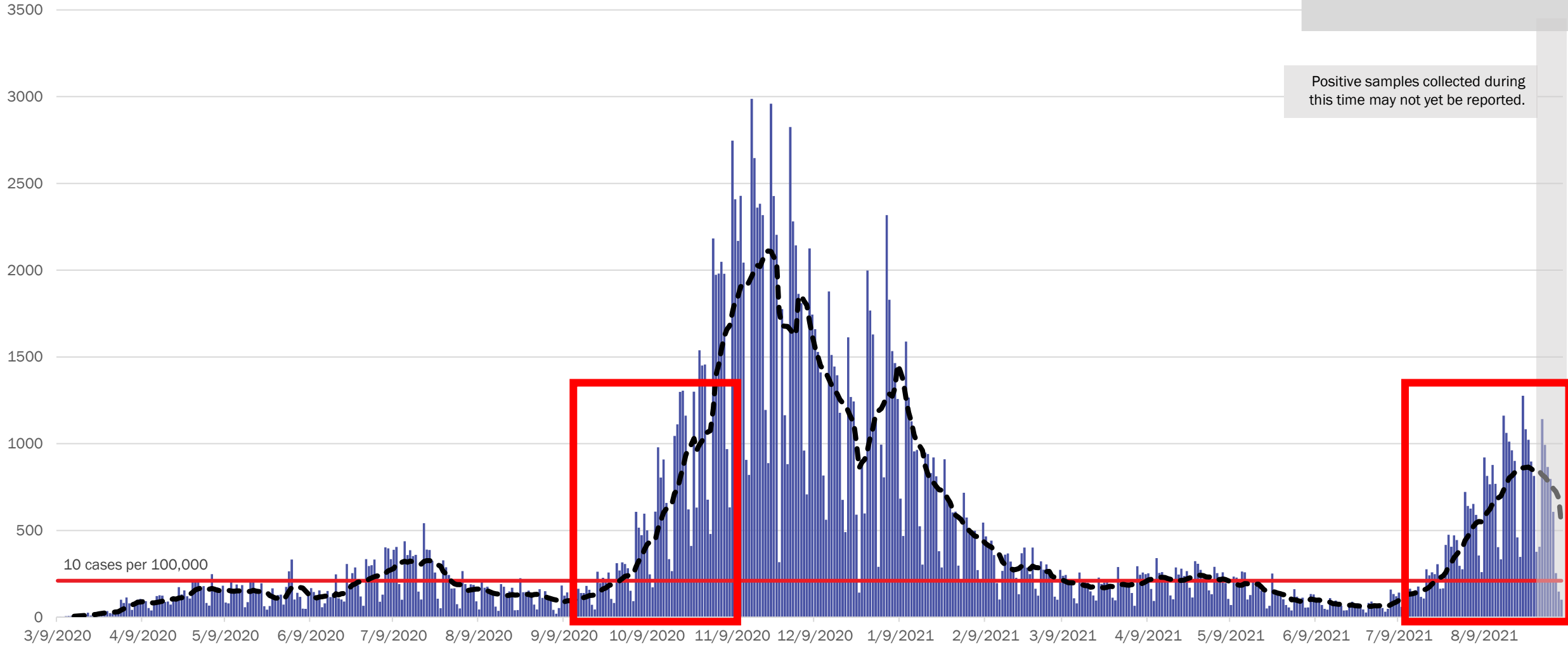
Ask your provider for your next COVID-19 vaccine dose

- COVID-19 booster shots, like other vaccines, should be given in provider offices
- Ask your provider if they currently give COVID-19 vaccines, and, if not, when they will be making booster doses available
- We are working with medical and pharmacy providers to be ready
- [TakeCareNM.org](https://www.TakeCareNM.org)



NM COVID-19 Cases

New Mexico COVID-19 Cases by Date of Specimen Collection September 7, 2021

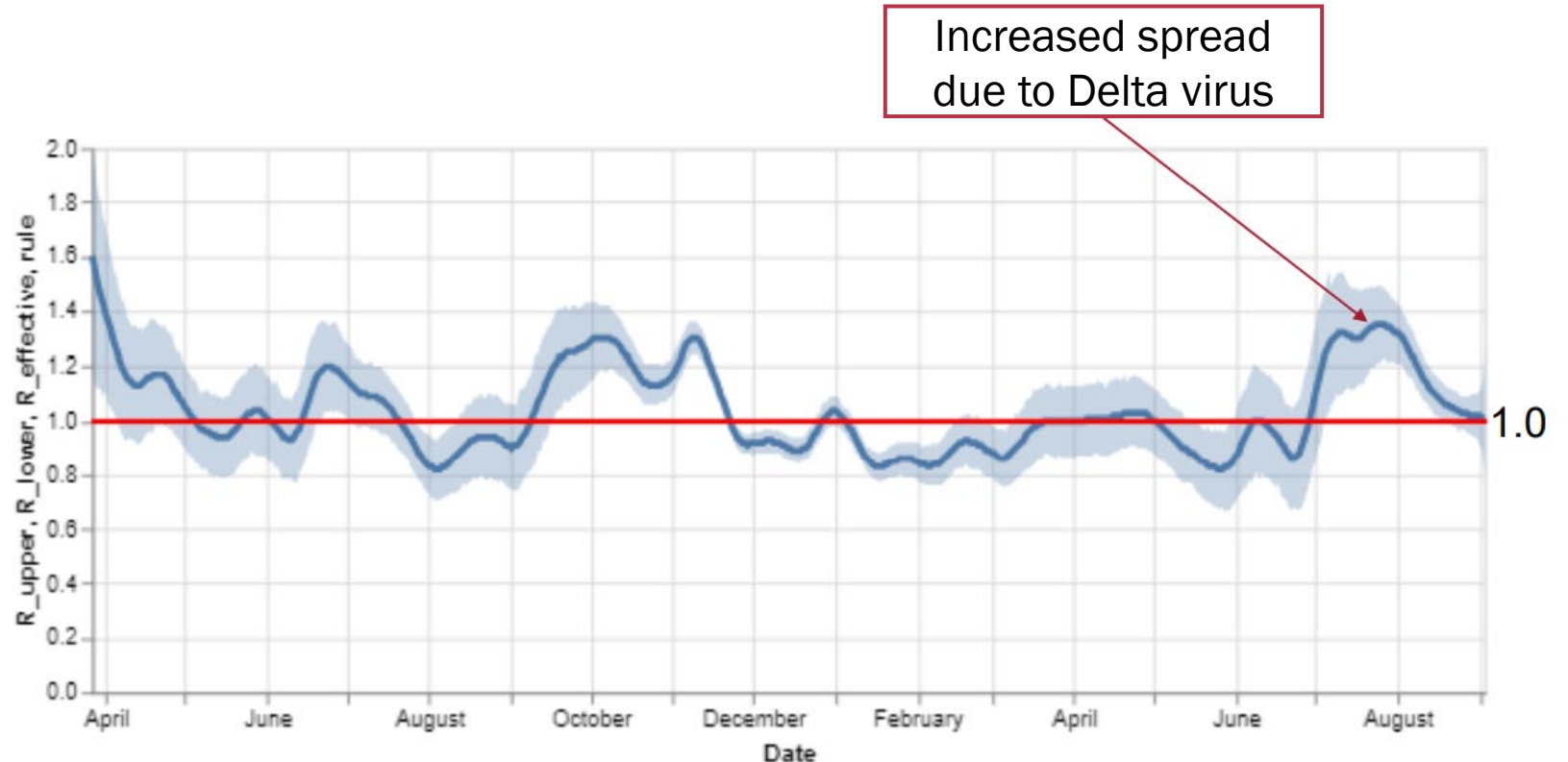


Investing for tomorrow, delivering today.

1190 S. St. Francis Drive • Santa Fe, NM 87505 • Phone: 505-827-2613 • Fax: 505-827-2530 • nmhealth.org

Spread rate is trending down

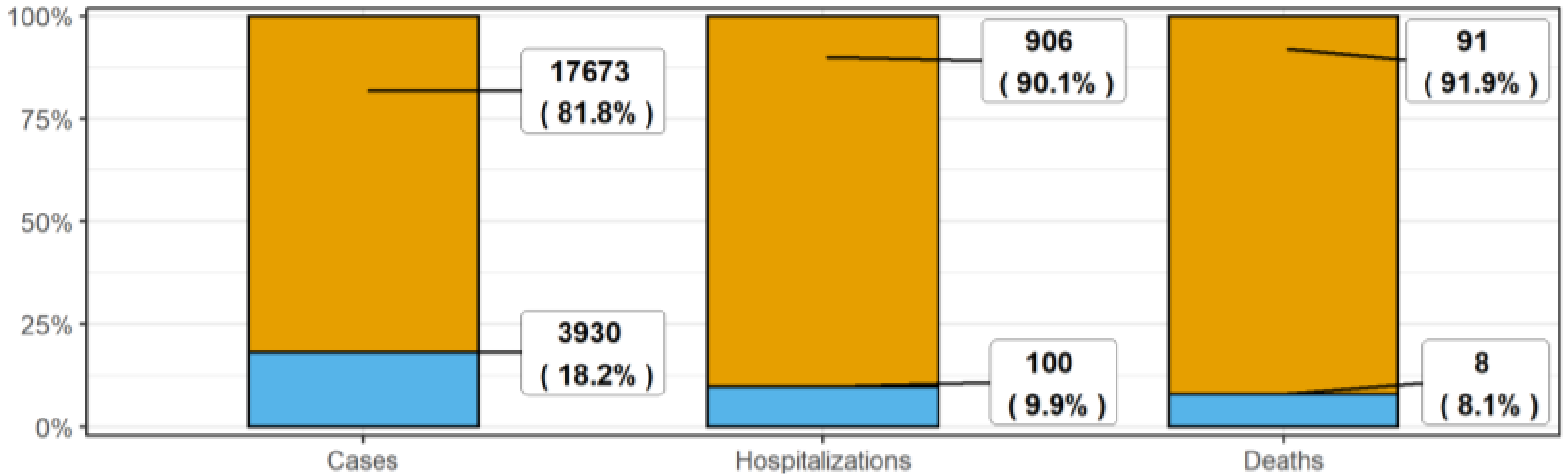
- Presbyterian Modeling from 9/7/21 shows COVID-19 reproduction numbers are trending down



Source: 9/7/21 Presbyterian Modeling

Cases, hospitalizations, and deaths by vaccination status over prior 4-week period

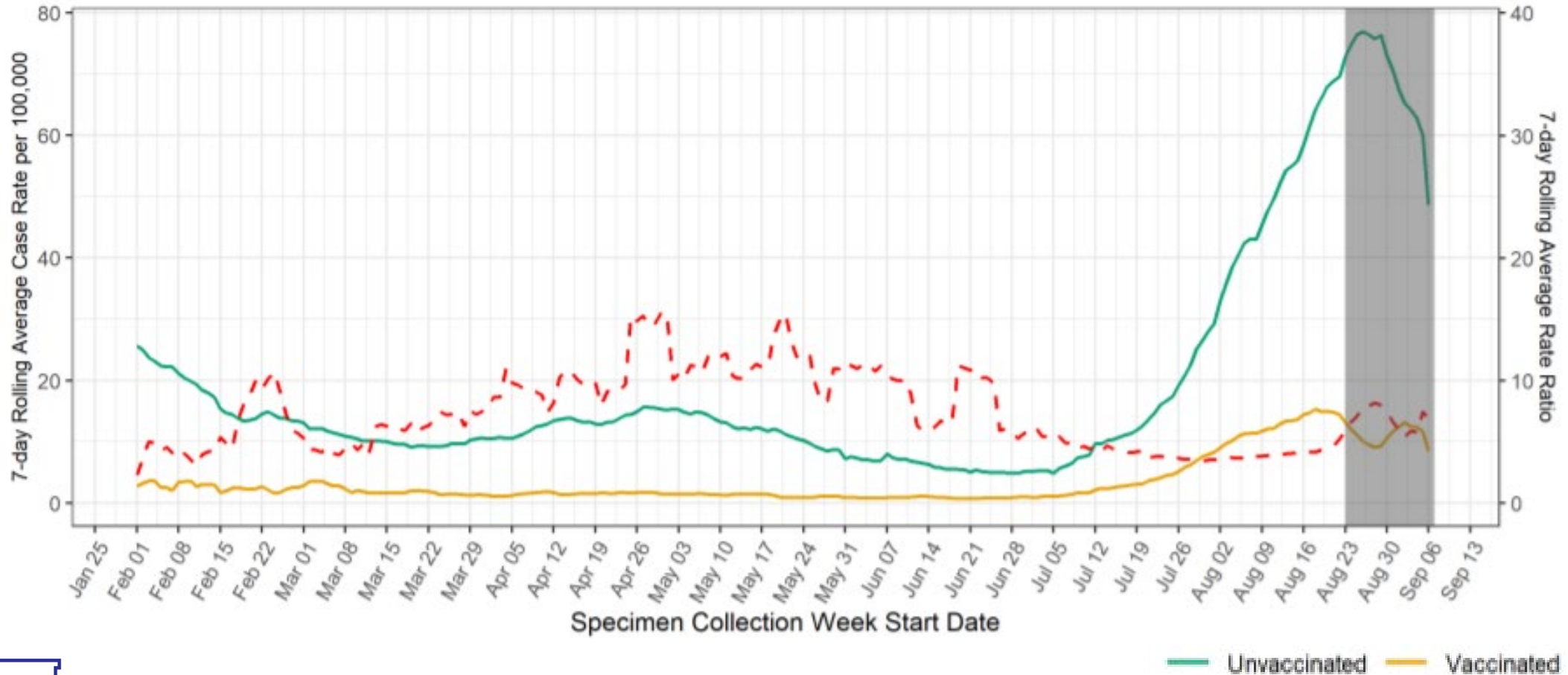
Percent of Cases Hospitalizations and Deaths by Vaccine Status
09 August, 2021 - 06 September, 2021



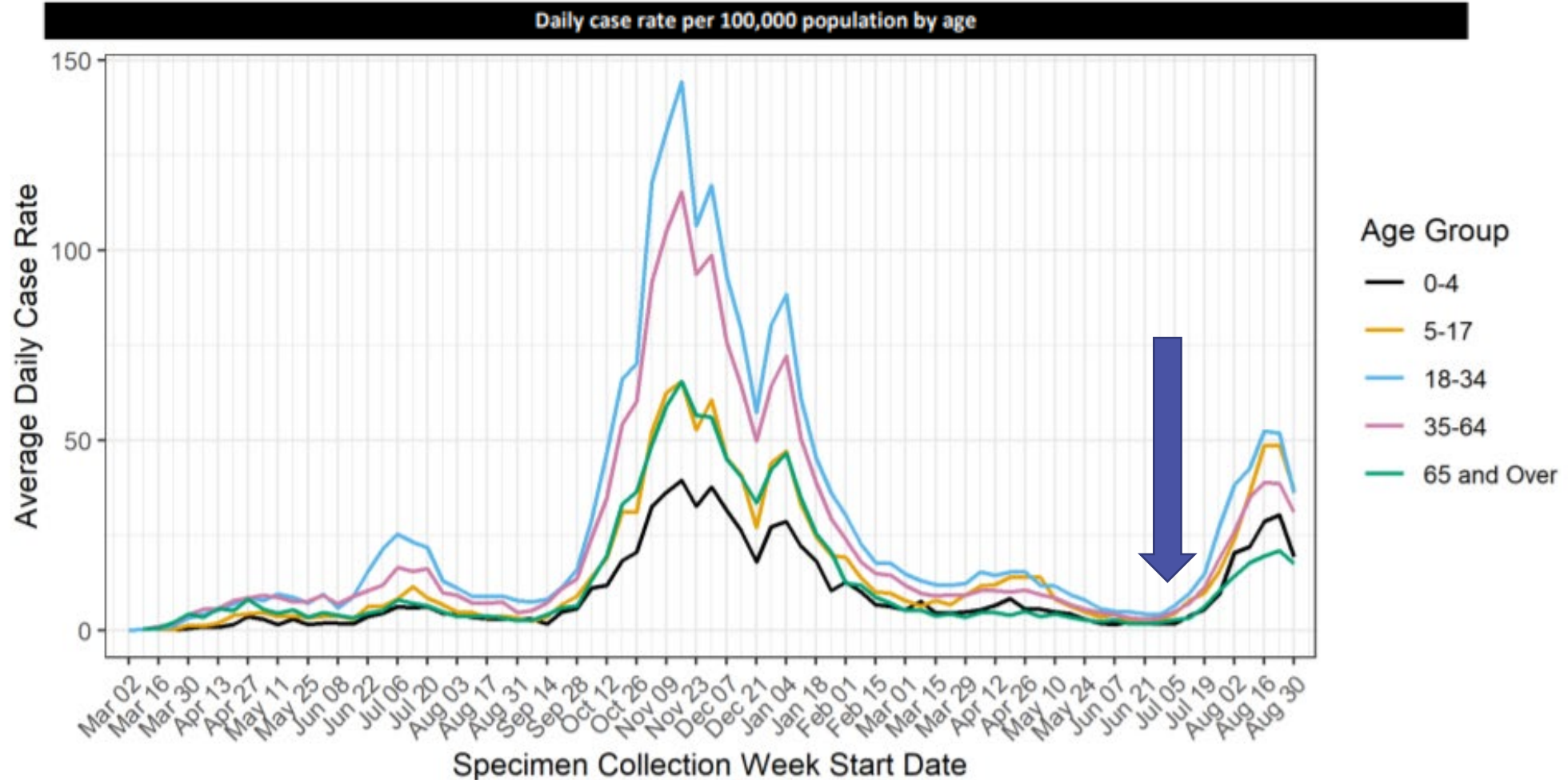
Infections among unvaccinated individuals are driving the current surge

7-day Rolling Average Percentage of Cases by Vaccination Status

**All Cases

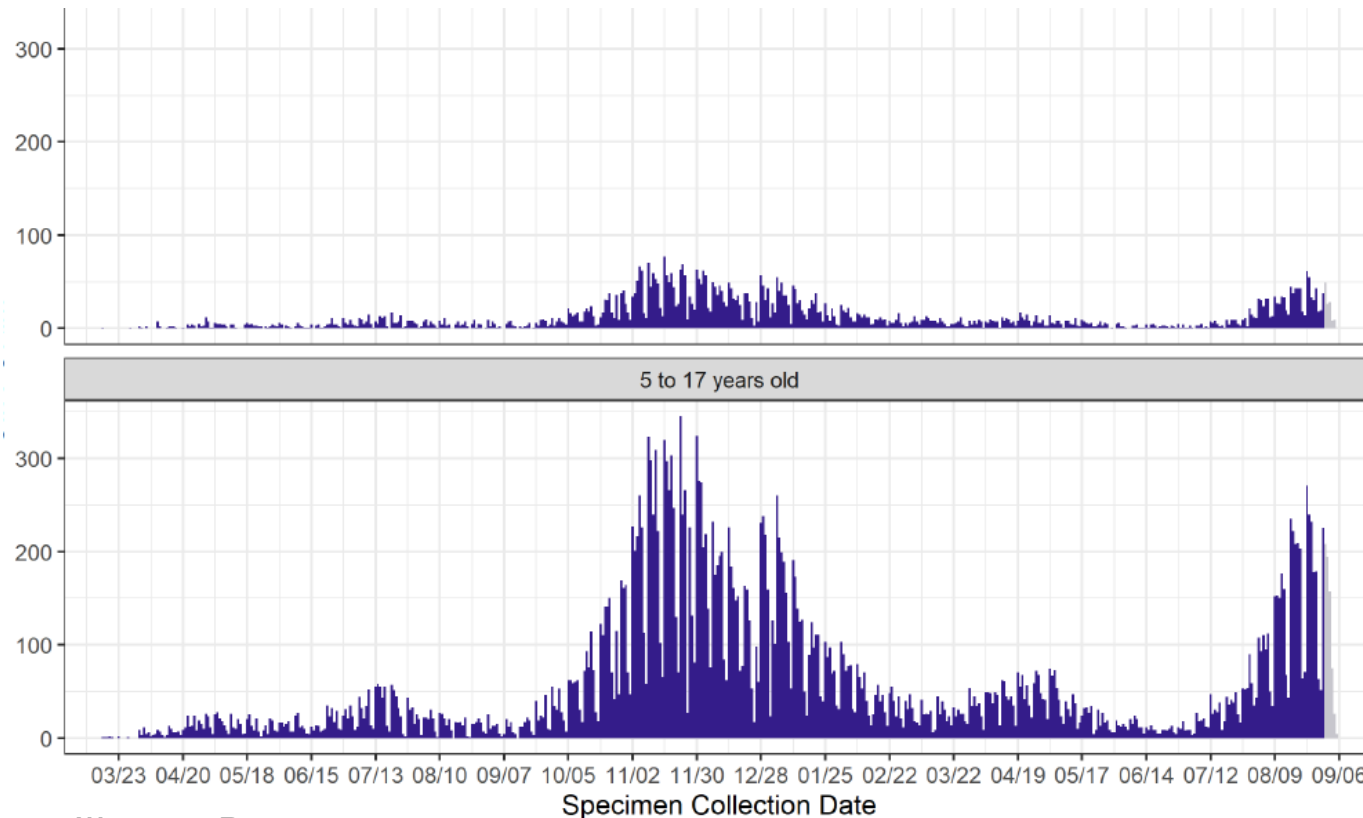


COVID-19 infection rates have increased after Delta variant became predominant



Large number of pediatric infections during this surge of COVID-19

Total number of pediatric cases (% of cases that are pediatric)	Number of pediatric cases in the last 7 days (% of cases in the last 7 days that are pediatric)
37,085 (15.6%)	1,334 (24.0%)



NMDOH Surveillance Data

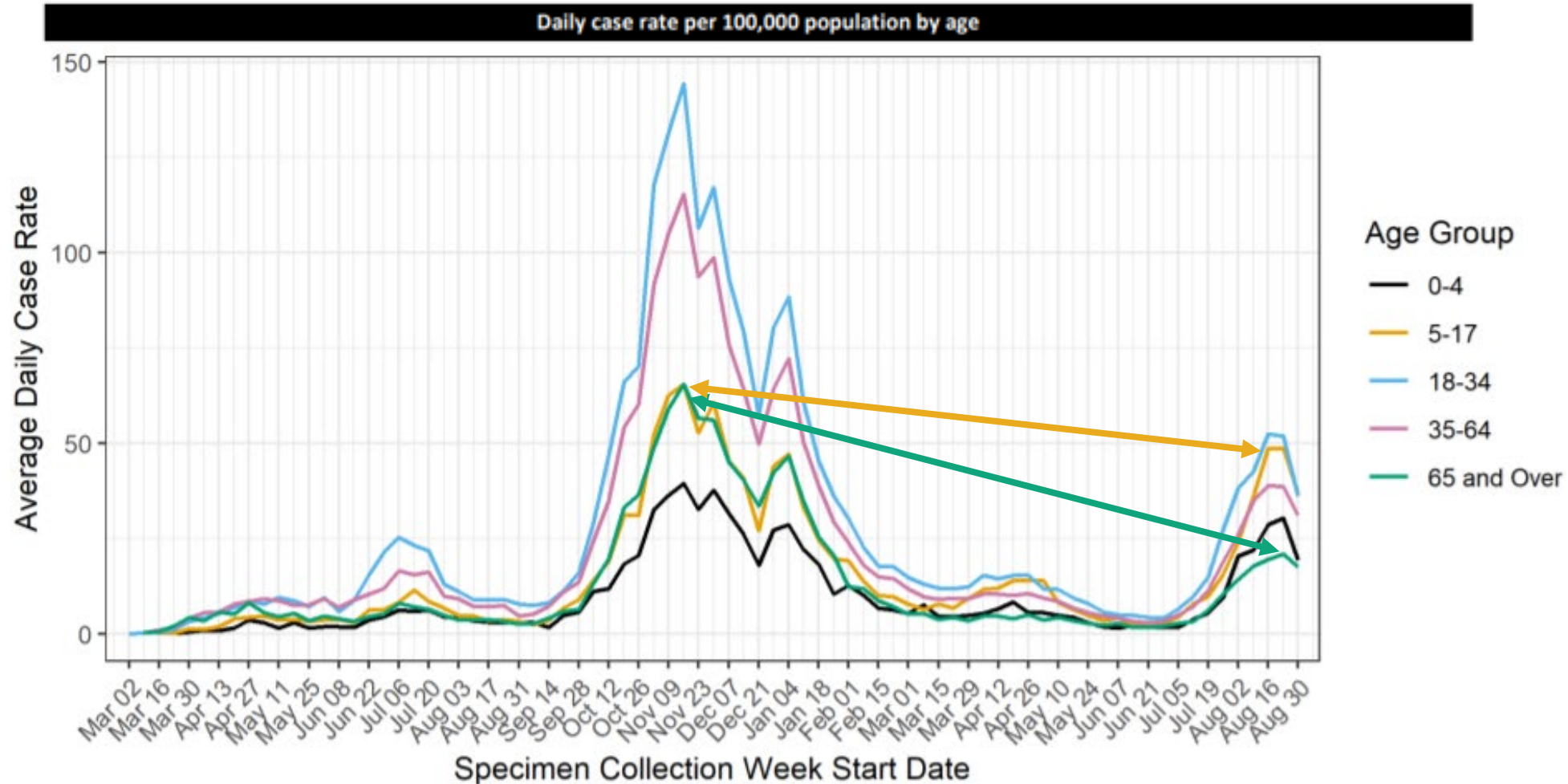
Previous 7 days are greyed out. Positive samples collected during this time may not yet be reported.



Investing for tomorrow, delivering today.

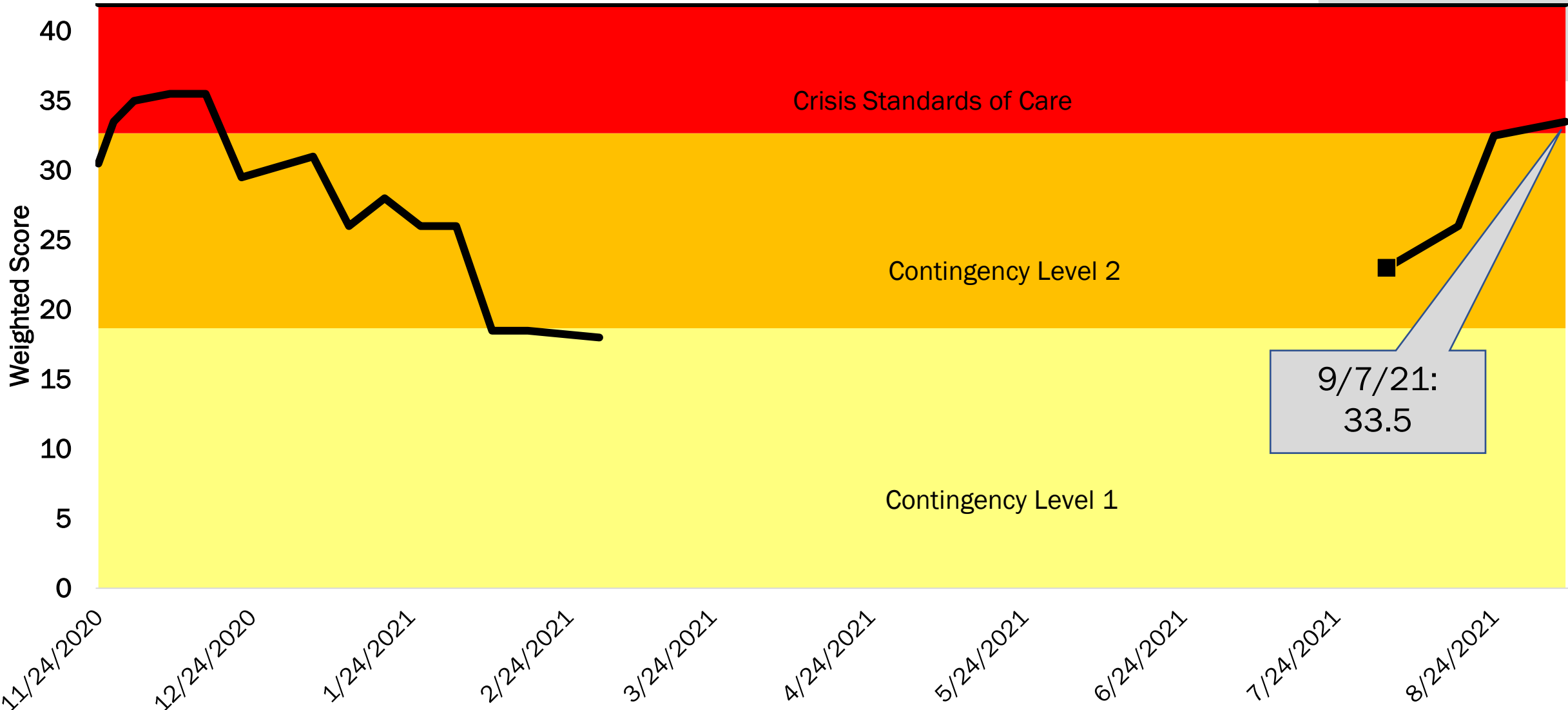
1190 S. St. Francis Drive • Santa Fe, NM 87505 • Phone: 505-827-2613 • Fax: 505-827-2530 • nmhealth.org

COVID-19 infection rates are high among children and adolescents aged 5-17 years



NM COVID-19 Hospitalizations and Deaths

NM Hospital Systems Capacity Self-Evaluation



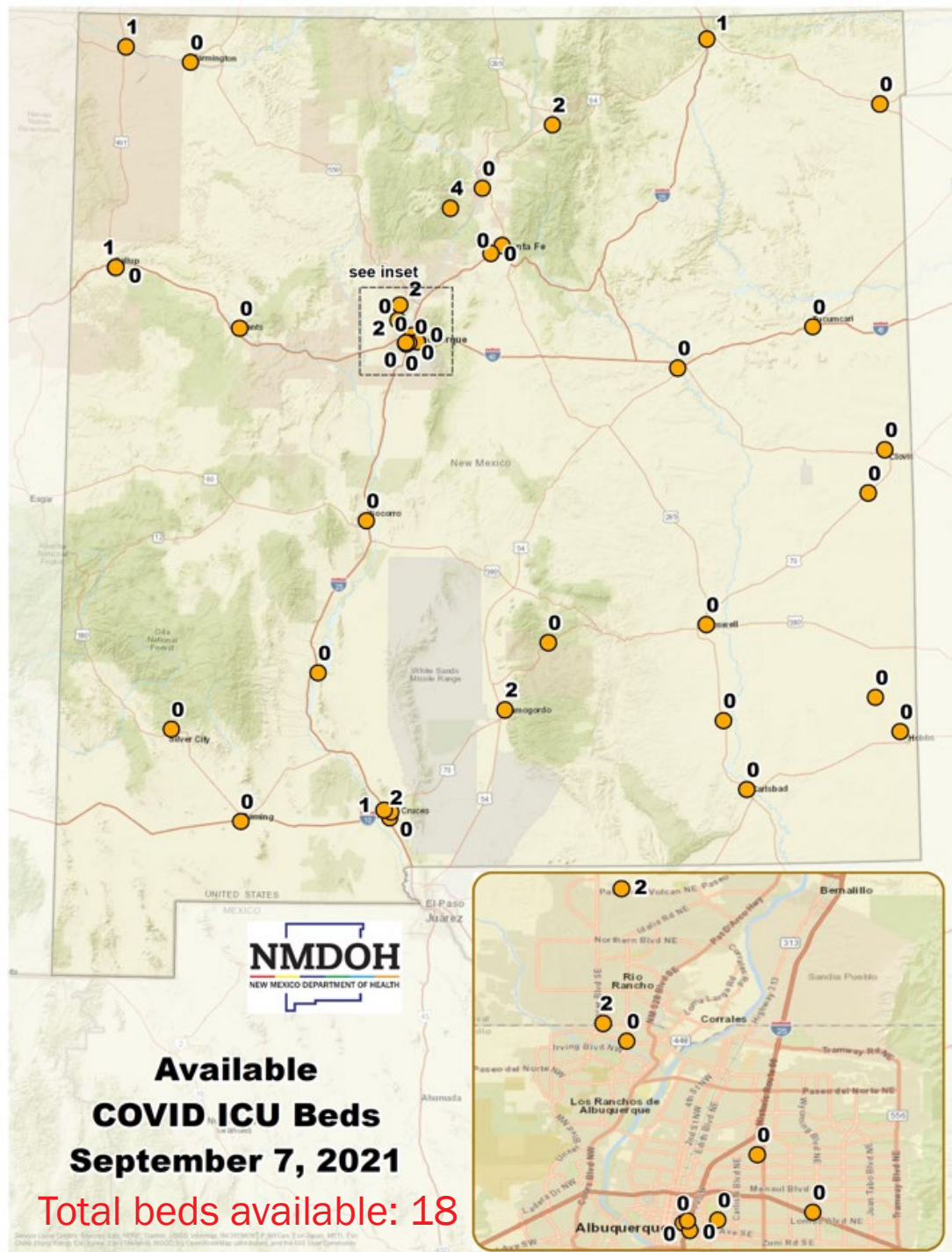
Contingency Level 1 Contingency Level 2 Crisis Standards of Care Weighted Score

Self-evaluation data not collected between 3/3/21 and 8/17/21.

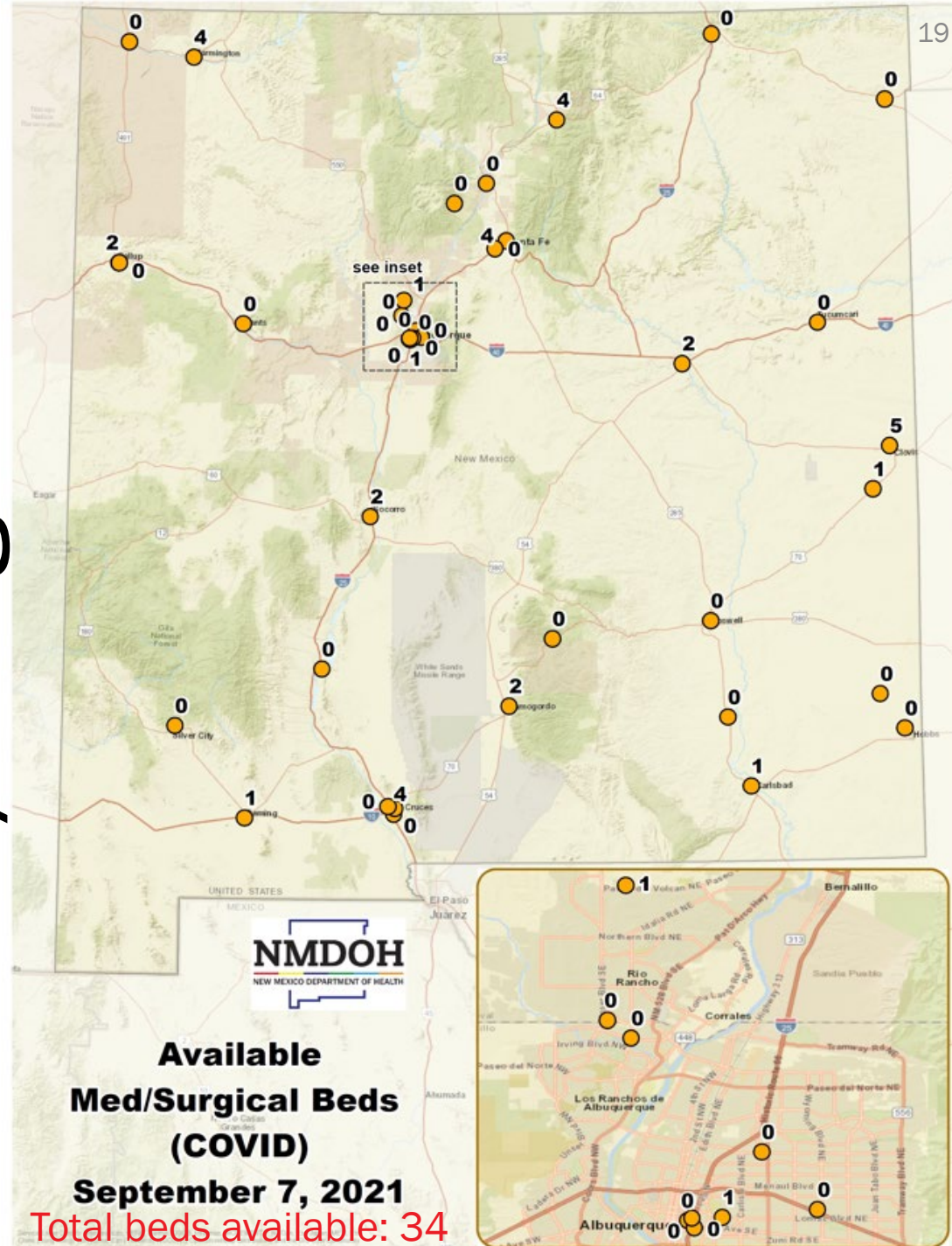


Investing for tomorrow, delivering today.

ICU Beds

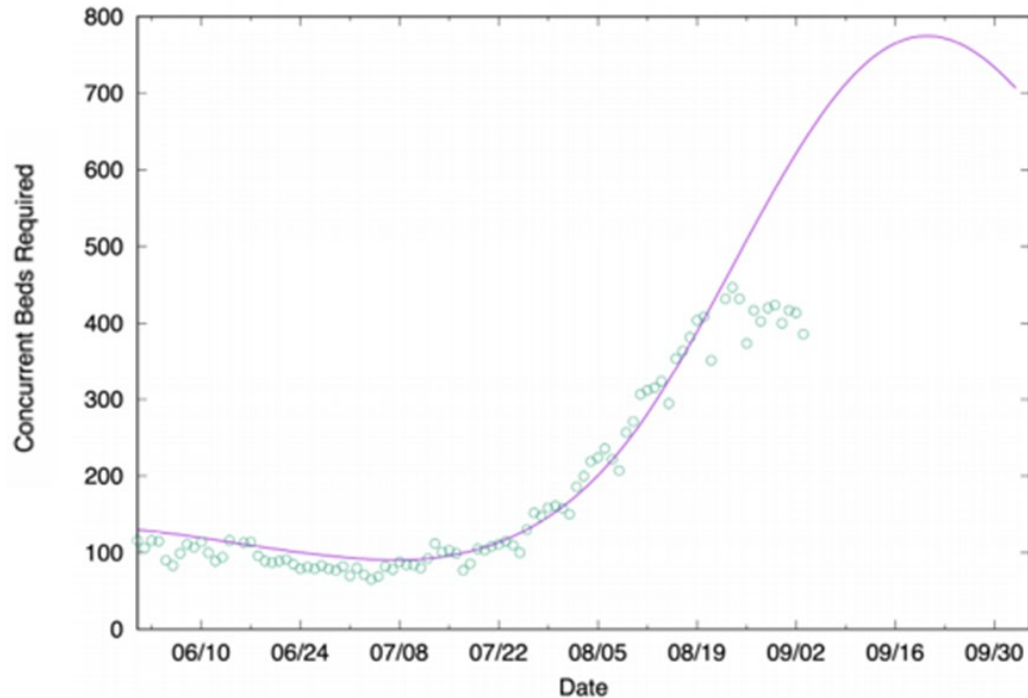


Med/Surgical Beds

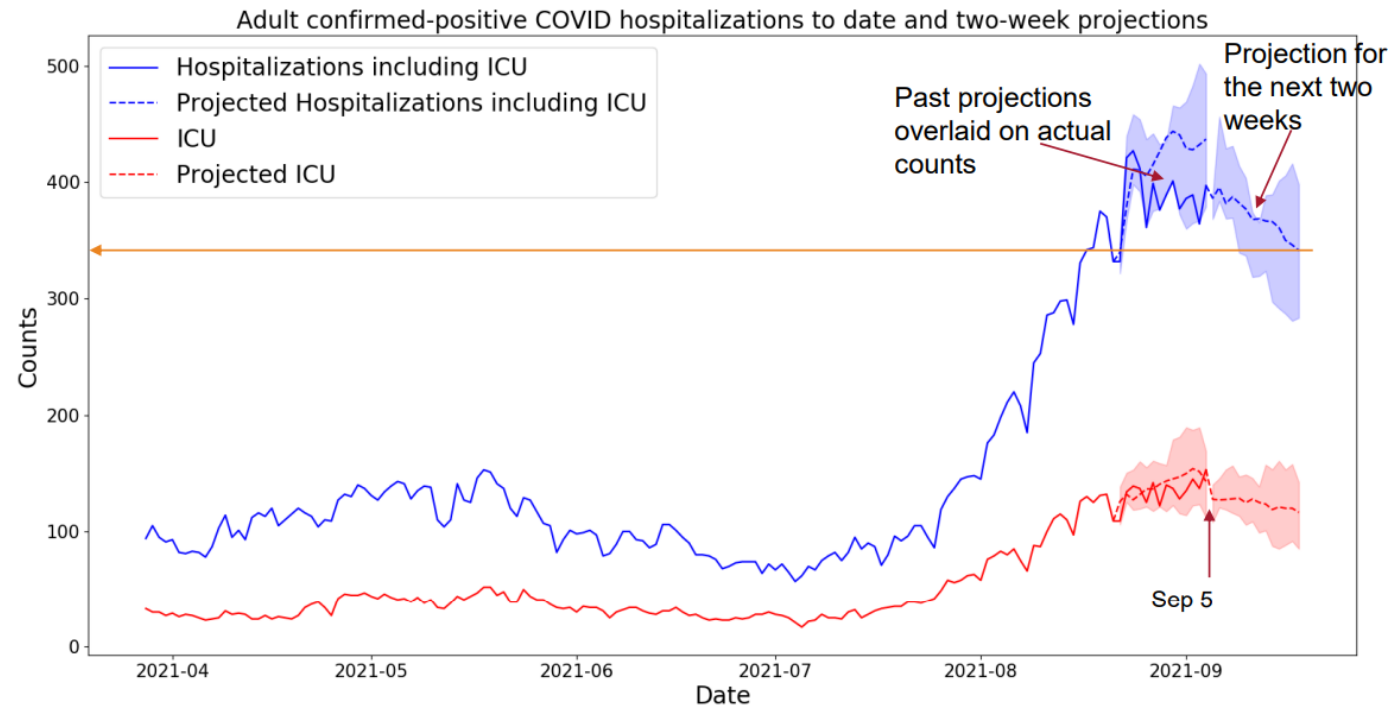


Hospitalizations now below current modeling projections

9/7/21 LANL Hospital Projections



9/7/21 Presbyterian Hospital Projections

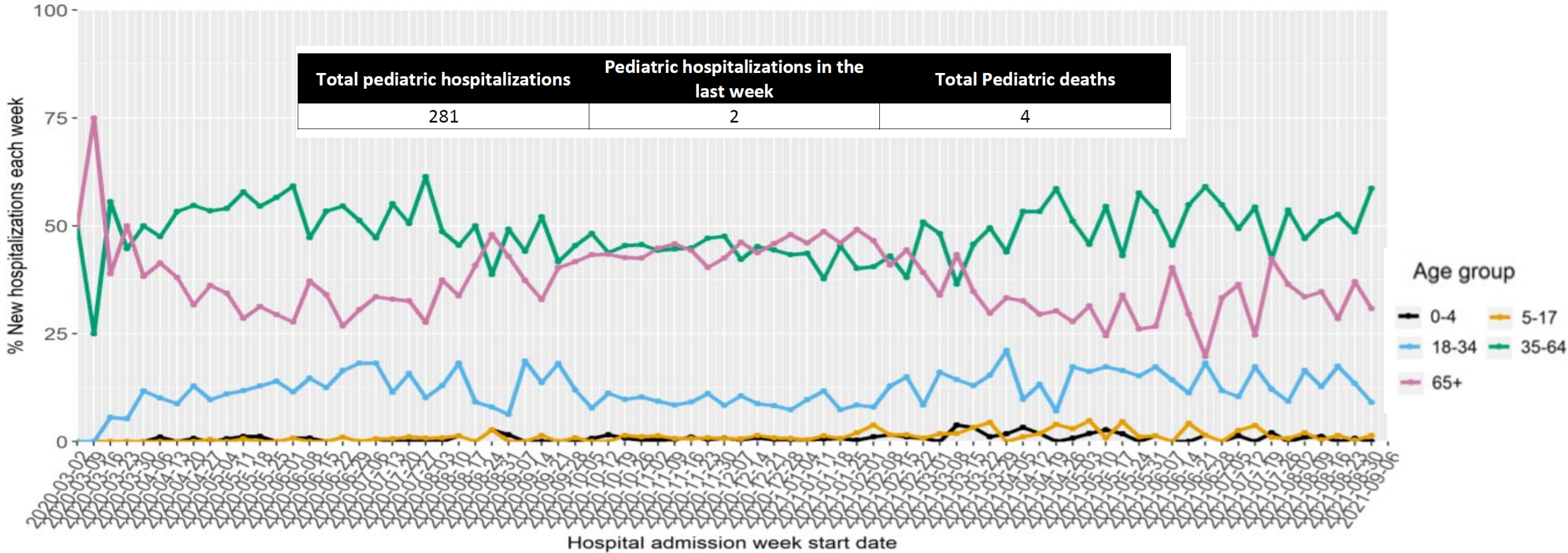


Source: 9/7/21 LANL Modeling [LANL-COVID_ModelingResults_9.7.2021.pdf](#)

Investing for tomorrow, delivering today.

Hospitalizations by age group in NM

Percentage of new hospital admissions each week by age

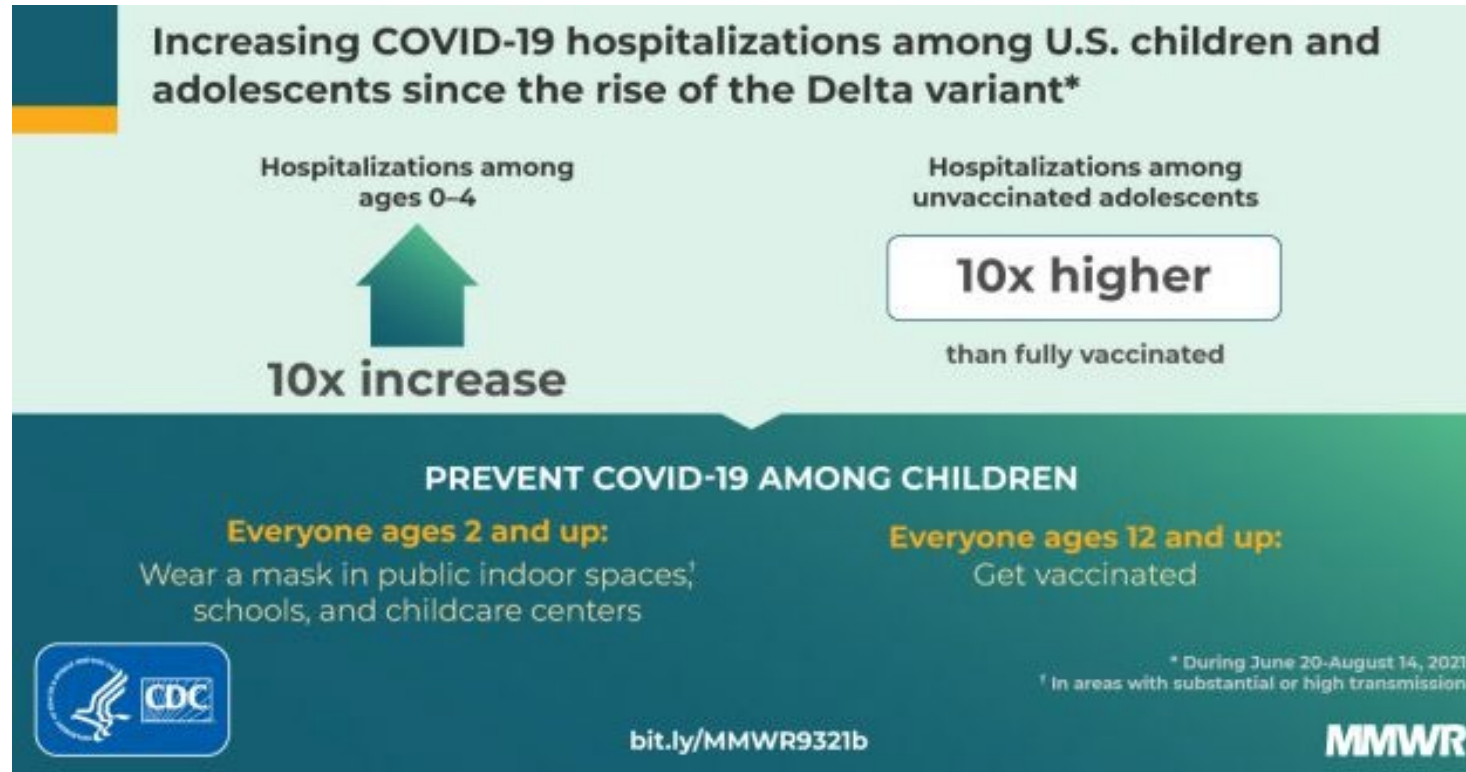


Source: https://cv.nmhealth.org/wp-content/uploads/2021/09/COVID19_hospitalizations_09.06.2021.pdf

Investing for tomorrow, delivering today.

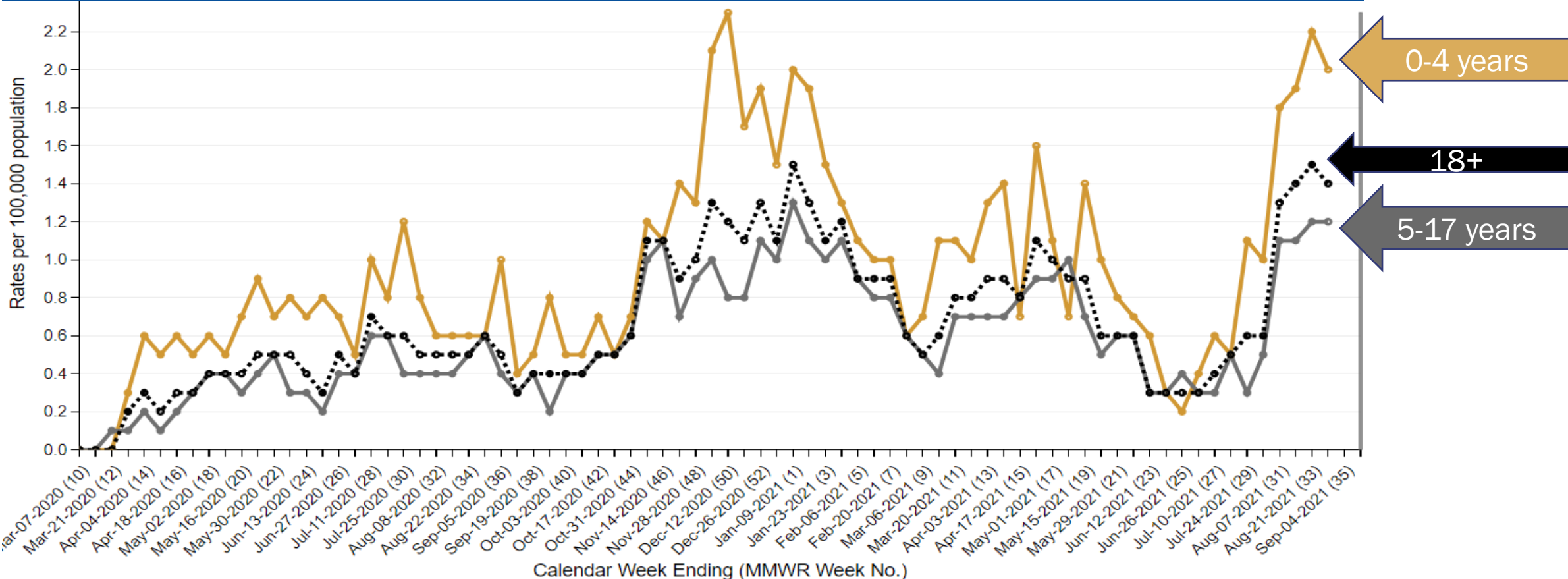
1190 S. St. Francis Drive • Santa Fe, NM 87505 • Phone: 505-827-2613 • Fax: 505-827-2530 • nmhealth.org

Hospitalization rates for children have increased nationally and slight increase seen to date in New Mexico



National trends of COVID-19 associated hospitalizations show increase in child hospitalizations

Rates of COVID-19-Associated Hospitalization
 Preliminary weekly rates as of Aug 28, 2021



Source: https://gis.cdc.gov/grasp/covidnet/covid19_3.html

Investing for tomorrow, delivering today.

1190 S. St. Francis Drive • Santa Fe, NM 87505 • Phone: 505-827-2613 • Fax: 505-827-2530 • nmhealth.org

In August, hospitalizations among children and adolescents increased 4x in...

States with low levels of vaccination



Compared with states with high levels of vaccination



Protect kids by getting vaccinated

bit.ly/MMWR9321

MMWR

Highest hospitalization rates in children in low vaccination rate states

- States in bottom two quartiles have childhood hospitalization rates 3.46 - 3.70 times the highest quartile states

TABLE. Ratio of percentage of COVID-19–associated emergency department visits among all emergency department visits and rate ratio of COVID-19 hospital admissions* (compared with highest vaccination coverage quartile states) among persons aged 0–17 years, by quartile of states grouped by vaccination coverage and age group — United States, August 14, 2020–August 27, 2021[†]

State vaccination coverage quartile [§]	Ratio (95% CI)				
	ED visits				Hospital admissions
	0–17 yrs	0–4 yrs	5–11 yrs	12–17 yrs	0–17 yrs
Highest [¶]	Ref	Ref	Ref	Ref	Ref
Second highest ^{**}	0.99 (0.94–1.05)	1.02 (0.93–1.12)	0.99 (0.90–1.10)	0.96 (0.89–1.05)	1.40 (0.87–2.25)
Second lowest ^{††}	2.65 (2.55–2.76)	2.31 (2.15–2.47)	2.64 (2.44–2.84)	2.84 (2.67–3.03)	3.46 (2.26–5.28)
Lowest ^{§§}	3.38 (3.24–3.52)	2.61 (2.42–2.82)	3.34 (3.08–3.61)	3.76 (3.52–4.02)	3.70 (2.32–5.90)

Sources: COVID-19 Vaccination Trends in the United States (<https://data.cdc.gov/Vaccinations/COVID-19-Vaccination-Trends-in-the-United-States-N/rh2h-3yt2>) and National Syndromic Surveillance Program, U.S. Department of Health and Human Services Unified Hospital Data Surveillance System, accessed August 30, 2021.

Abbreviations: ED = emergency department; Ref = referent group.

* The hospital admission incidence rates that were used to calculate the rate ratios are 14-day average daily confirmed COVID-19 pediatric admissions per 100,000 persons aged 0–17 years. Rate in the lowest vaccination coverage quartile excludes data from Georgia because of a data quality issue.

[†] ED visit data are from the National Syndromic Surveillance Program (NSSP). Data are limited to ED visits with a discharge diagnosis. Data from Hawaii and Ohio are not included. Fewer than 50% of facilities in California, Iowa, Minnesota, South Dakota, and Wyoming report to NSSP. In HHS Region 7, fewer than 50% of all ED visits have a discharge diagnosis.

[§] Vaccine coverage data are for the population aged ≥12 years who completed COVID-19 vaccination series as of July 31, 2021. Idaho provides vaccine data only for vaccine recipients who are aged ≥18 years.

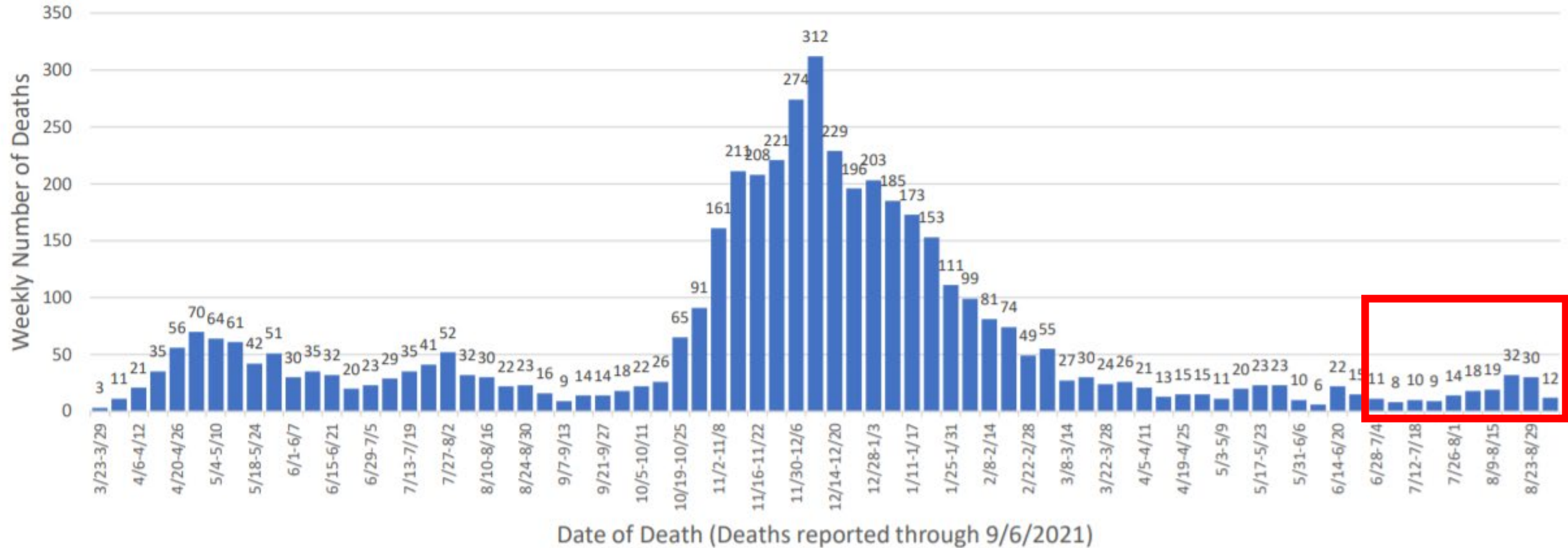
[¶] Highest vaccination states: Connecticut, Maine, Maryland, Massachusetts, New Hampshire, New Jersey, **New Mexico**, New York, Oregon, Rhode Island, Vermont, Virginia, and Washington (>63.45%).

^{**} Second highest vaccination states: California, Colorado, District of Columbia, Delaware, Hawaii, Illinois, Iowa, Michigan, Minnesota, Nebraska, Pennsylvania, and Wisconsin (>56.30% and <63.45%).

^{††} Second lowest vaccination states: Alaska, Arizona, Florida, Indiana, Kansas, Kentucky, Montana, Nevada, North Carolina, Ohio, South Dakota, Texas, and Utah (>49.75% and ≤56.30%).

^{§§} Lowest vaccination states: Alabama, Arkansas, Georgia, Idaho, Louisiana, Mississippi, Missouri, North Dakota, Oklahoma, South Carolina, Tennessee, West Virginia, and Wyoming (≤49.75%).

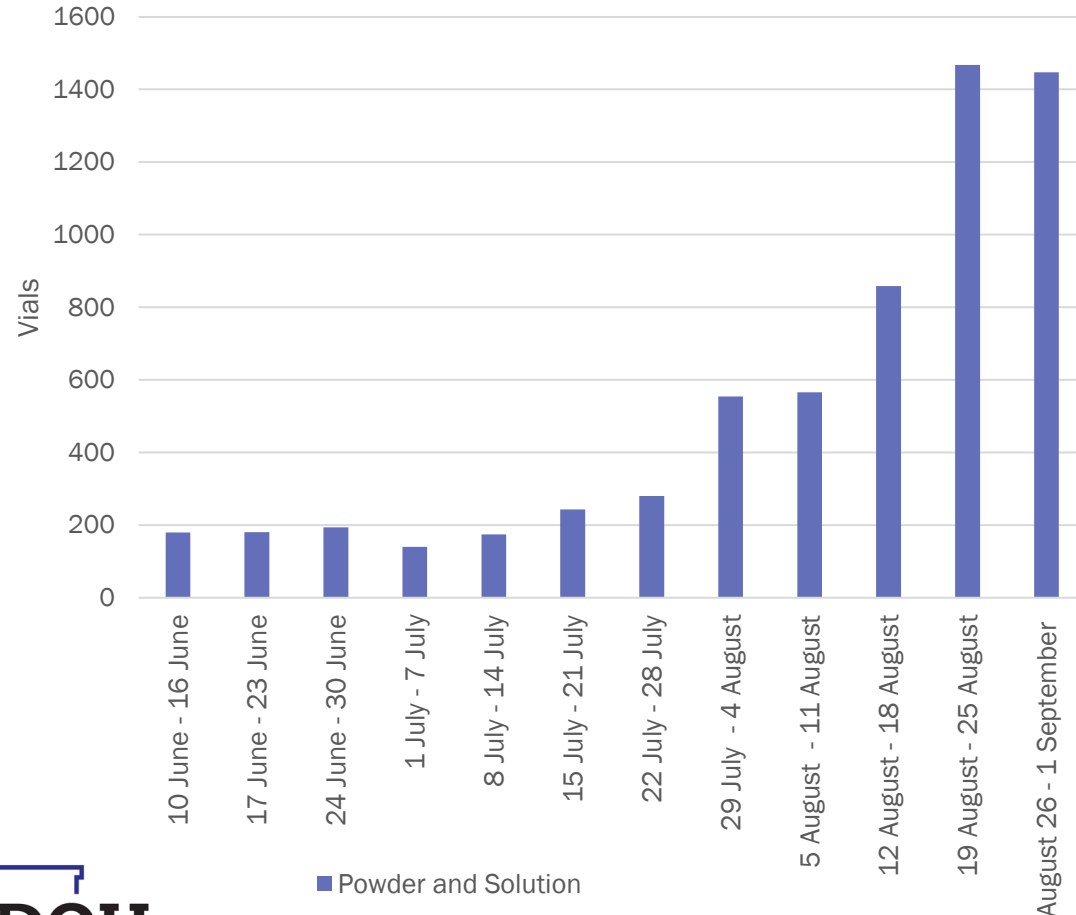
As expected, we are now beginning to see an increase in COVID-19 deaths



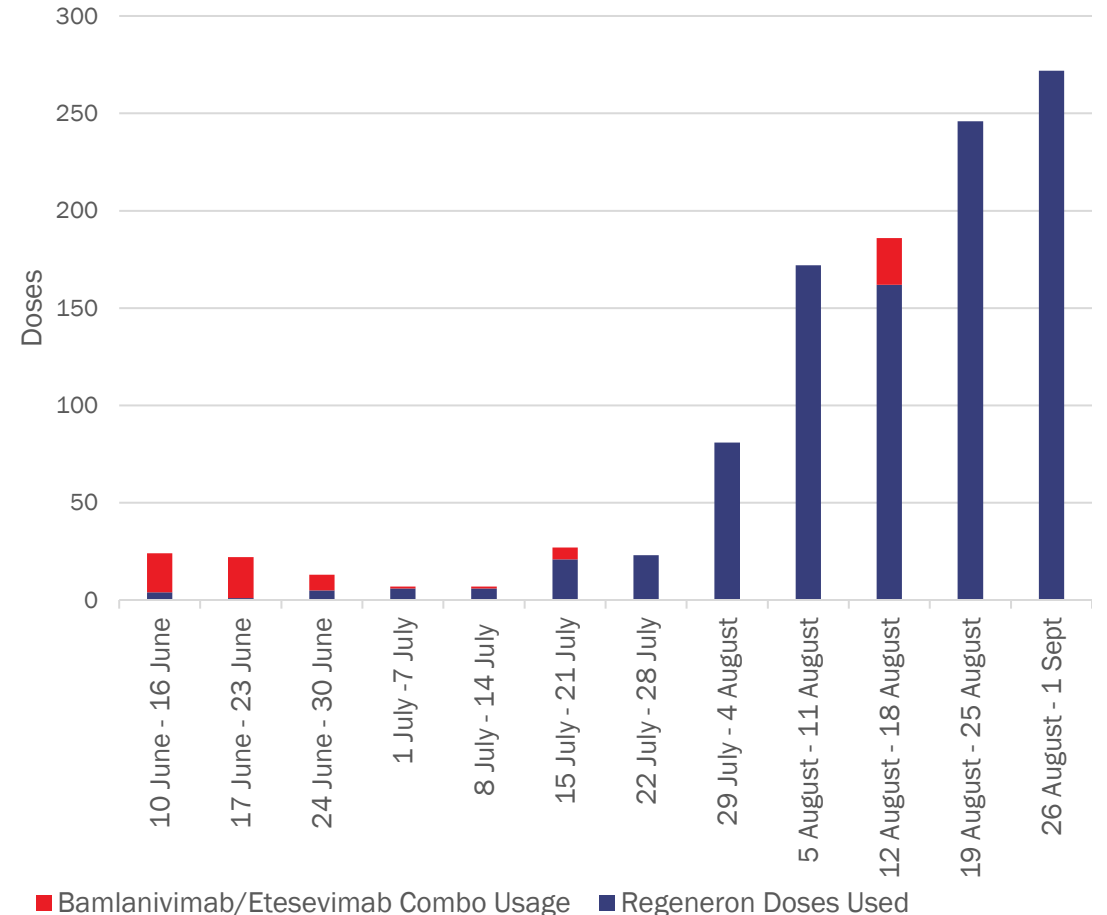
COVID-19 Treatments

There has been a significant increase in inpatient and outpatient mAb treatments, but not enough!

Remdesivir (moderately ill, given in hospital)



mAbs (symptoms + >64, obese, OR one risk factor, given as outpatient)



NM COVID-19 Testing Update

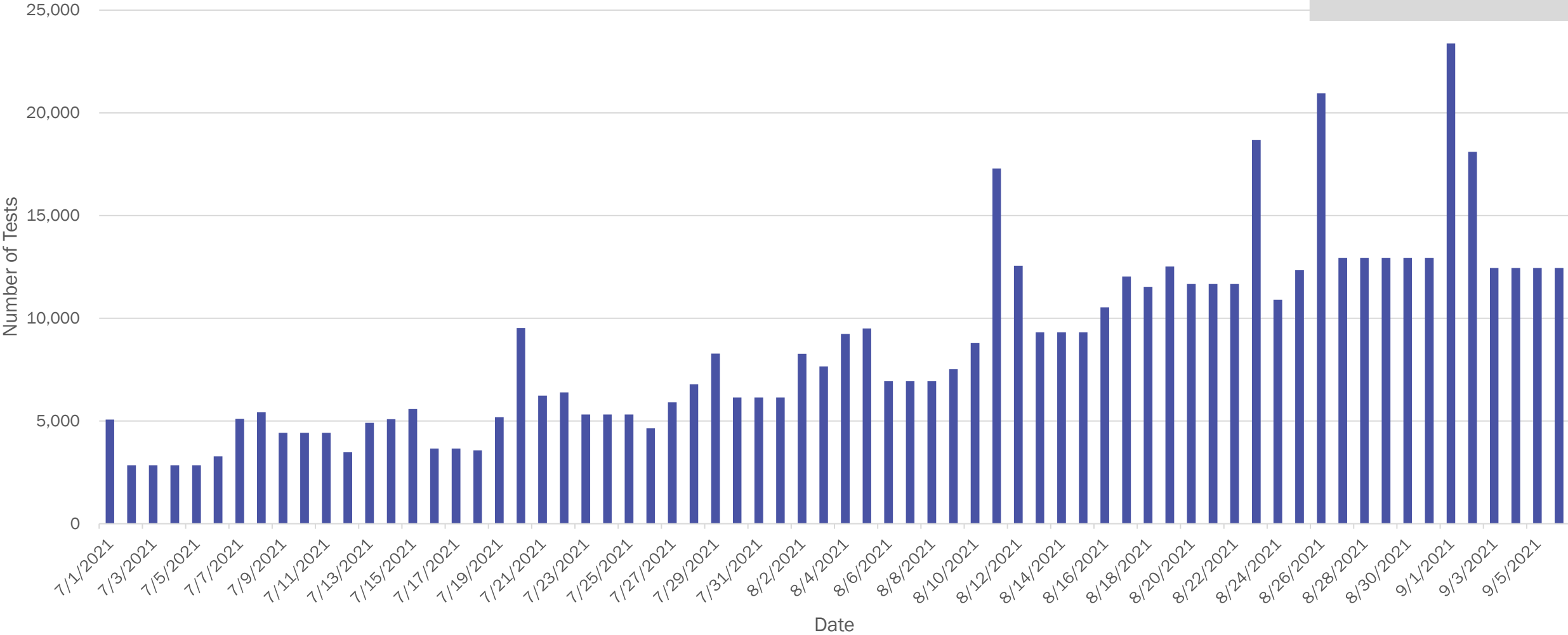
New Mexico Test positivity 7-Day Rolling Average, March 17, 2020-September 6, 2021



Investing for tomorrow, delivering today.

1190 S. St. Francis Drive • Santa Fe, NM 87505 • Phone: 505-827-2613 • Fax: 505-827-2530 • nmhealth.org

Number of NM Test Results Per Day, July 1-August 6, 2021



Investing for tomorrow, delivering today.

1190 S. St. Francis Drive • Santa Fe, NM 87505 • Phone: 505-827-2613 • Fax: 505-827-2530 • nmhealth.org

New Mexico testing turnaround time

Reporting Laboratory	Test Results, 08/28/2021-09/03/2021	Percent of Total Test Results, 08/28/2021-09/03/2021	Mean Turn Around Time in Days, 08/28/2021-09/03/2021	Cumulative Test Results, 03/11/2020-09/06/2021
Curative	8,654	17.1%	2.85	605,796
LabCorp	3,977	7.9%	2.24	332,634
Pathology Consultants	1,488	2.9%	2.55	92,345
Quest	1,352	2.7%	2.32	252,133
SLD	1,280	6.2%	1.50	712,563
Southwest Labs	1,059	2.1%	0.58	44,607
TriCore	12,710	17.8%	1.17	984,909
Vault	6,464	5.8%	4.25	115,162
Other	18,908	37.4%	2.23	1,114,317
TOTAL	50,501	-	2.33	4,254,466

Children and adults: Get tested for COVID-19 if...

- ...you have COVID-19 symptoms;
- ...you don't have symptoms but were in close contact to a positive case;
- ...you don't have symptoms but live or work in a high-risk congregate setting; or
- ...you are a patient scheduled for surgery or hospital admission

Regardless of vaccination status!



Scheduling a COVID-19 test from your computer or phone is easy!

- NM COVID-19 Test Site Directory: FindaTestNM.org
- Surveillance testing: NMDOH suggests Vault and Curative – **Plan ahead!**
- Symptomatic or close contact testing: local hospitals, public health offices, pharmacies, doctors' offices, and Curative test sites
 - Over-the-counter rapid tests

CDC Warns of Supply Shortage for COVID-19 Rapid Tests

There is currently a temporary shortage in point-of-care (POC) and over-the-counter (OTC) test supplies. To help preserve rapid test kits and supplies and meet the current test demand, CDC recommends the use of laboratory-based testing whenever possible.

The United States Government continues to monitor the testing supply chain and remains in contact with diagnostic test manufacturers. These companies report strong availability of laboratory instruments, laboratory test kits and other supplies, and an increasing supply of POC and OTC tests.

If laboratory directors want to request assistance to connect with a diagnostics manufacturer, they may contact AdvaMedDx at staff@advameddx.org. AdvaMedDx is a division of the Advanced Medical Technology Association (AdvaMed) that represents more than 75 manufacturers of diagnostics tests and instruments.

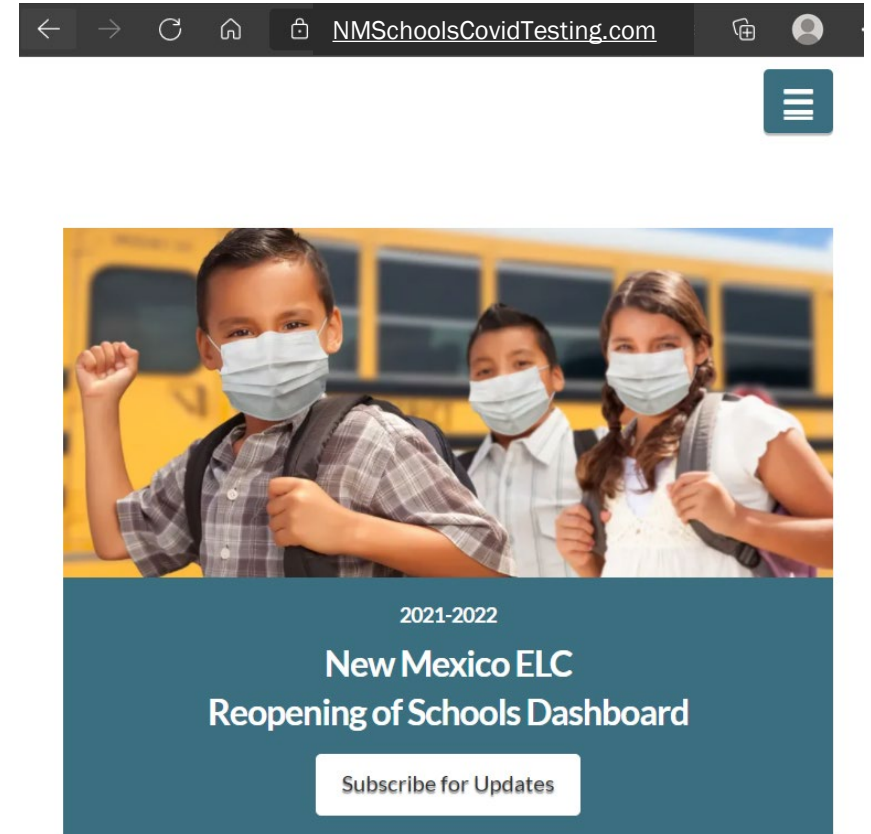
eMed.com – order 6 rapid tests for \$150

- Abbott's BinaxNOW COVID-19 Ag test is a rapid test for detecting active COVID-19 infections
- eMed allows you to purchase a 6 pack of tests and test at home
- Must be at least 18 years of age to order
- Test authorized for use by persons age 4+
- Test takers 14 or younger must be accompanied by an adult during specimen collection
- More information: <https://www.eMed.com/>



A new COVID-19 testing and screening program is ready for New Mexico schools

- Made possible by ARPA funding for school testing, a new COVID-19 testing program has launched for New Mexico public school districts, public charters, nonpublic, BIE and tribal schools, including:
 - Full-Service Direct Testing - Connection to a full-service screening and diagnostic testing program vendor with a variety of test options
 - School Award - Direct support for the school's existing testing and screening program
 - Health Information Technology Support - Support for an electronic healthcare information database and reporting systems
- Schools must apply to participate
- Schools can begin applying NOW here



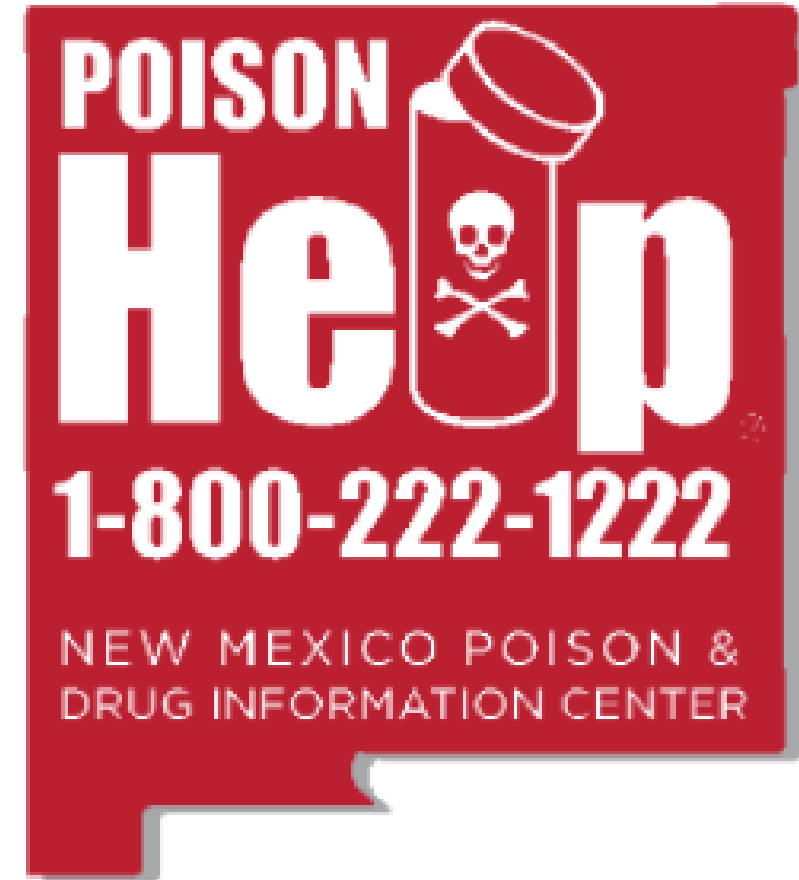
Misinformation moment: Ivermectin is NOT an approved treatment for COVID-19!

- Ivermectin is an FDA-approved prescription medication used to treat:
 - Onchocerciasis (river blindness)
 - Intestinal strongyloidiasis
 - Head lice (topical)
 - Rosacea (topical)
 - Internal and external parasitic infections in animals
- Ivermectin is **NOT** authorized or approved by FDA to prevent or treat any viral infection, including COVID-19



Misinformation moment: Ivermectin is NOT an approved treatment for COVID-19!

- Taking Ivermectin without medical guidance and a prescription can be dangerous, or even fatal:
 - Animal products are often highly concentrated, which can be toxic to humans
 - It can interact with other medications, such as blood-thinners
 - It can cause nausea, vomiting, diarrhea, hypotension (low blood pressure), allergic reactions (itching and hives), dizziness, or ataxia (problems with balance)
 - Overdoses can lead to seizures, comma, or death
- Call New Mexico Poison & Drug Information Center if you or someone you know has taken Ivermectin



New Mexico State Fair

September 9-19, 2021

- **Proof of a completed vaccination series:**
 - 2 shots of the Pfizer vaccine
 - 2 shots of the Moderna vaccine
 - 1 shot of the Johnson & Johnson vaccine

OR

- **Proof of a valid exemption**, as detailed in the public health order **AND** a **negative COVID-19 test**, taken within 48 hours of your arrival to the grounds
- **Children under the age of 12** are exempt



2021 NM State Fair COVID-19 Procedures: <https://statefair.exponm.com/p/covid-procedures>
Current Public Health Order: [https://cv.nmhealth.org/wp-content/uploads/2021/08/081721-PHO-](https://cv.nmhealth.org/wp-content/uploads/2021/08/081721-PHO-Masks.pdf)

Masks for tomorrow, delivering today.

Get Vaccinated. Stay home and get tested if you have COVID-19 symptoms.

- Get tested if you think you have COVID-19 or have been exposed to someone who is positive.
- If you have a COVID-19 positive test, symptoms and risk factors, seek out monoclonal antibody treatment.
- Be especially careful indoors no matter where you live in NM.

CASE COUNTS REMAIN TOO HIGH. WE ALL STILL MUST FIGHT THE VIRUS.

- Wash hands, clean surfaces, cough into tissue/elbow.
- Everyone mask up and maintain social distancing (minimum 6').
- Get needed preventive healthcare.
- Get vaccinated!

