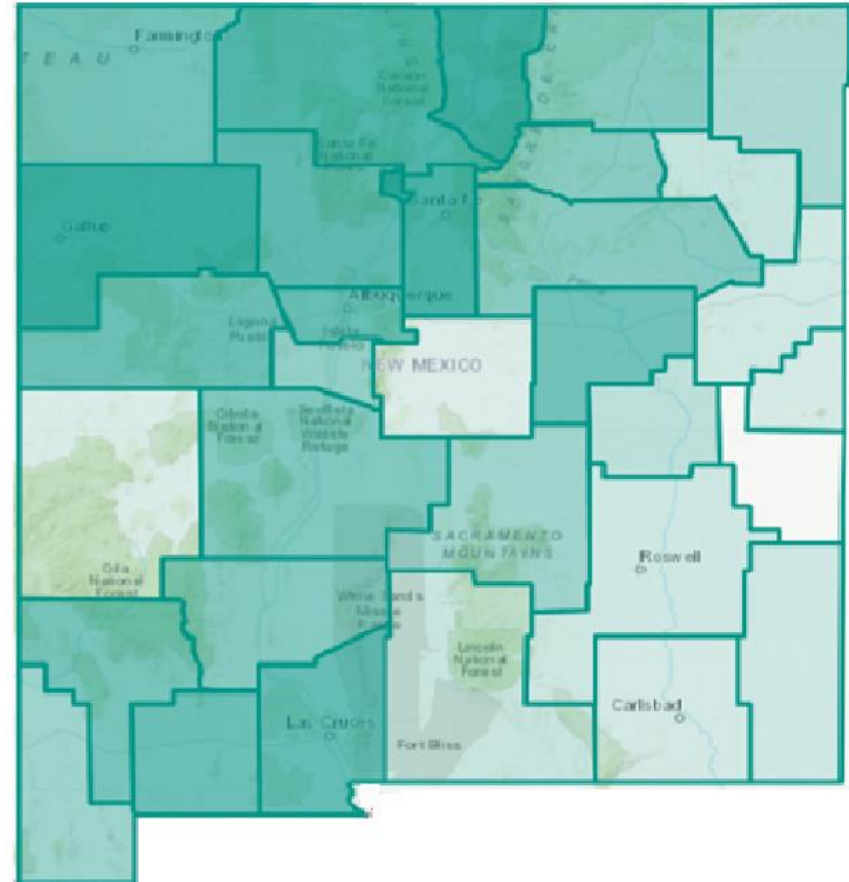


# New Mexico vaccination rates

- **74.9%** of New Mexicans (18+) and 55.0% (12-17) have received at least a first shot
- **65.9%** of New Mexicans (18+) and 42.1% (12-17) are fully vaccinated
- **11 counties** are still less than 50% fully vaccinated (18+)

Percent of New Mexico Residents 18+ with Vaccination Series Completed



Source: <https://vaccinenm.org/public-dashboard.html>

# 3<sup>rd</sup> COVID-19 Vaccine Booster Dose

- 3rd dose of an mRNA COVID-19 vaccine after an initial 2-dose primary mRNA COVID-19 vaccine series
- For people with immune deficiency due to a transplant, medical condition or medications
- Not part of August \$100 incentive program



# Who needs a 3<sup>rd</sup> COVID-19 Vaccine Booster?

- Please talk to your primary care provider to see if a 3<sup>rd</sup> COVID-19 Vaccine dose is right for you.

- NMDOH urges healthcare providers caring for immunosuppressed patients to register with the agency as an approved COVID-19 vaccine provider:  
[TakeCareNM.org](https://www.takecarenm.org)

Active treatment for solid tumor and hematologic malignancies

Receipt of solid-organ transplant and taking immunosuppressive therapy

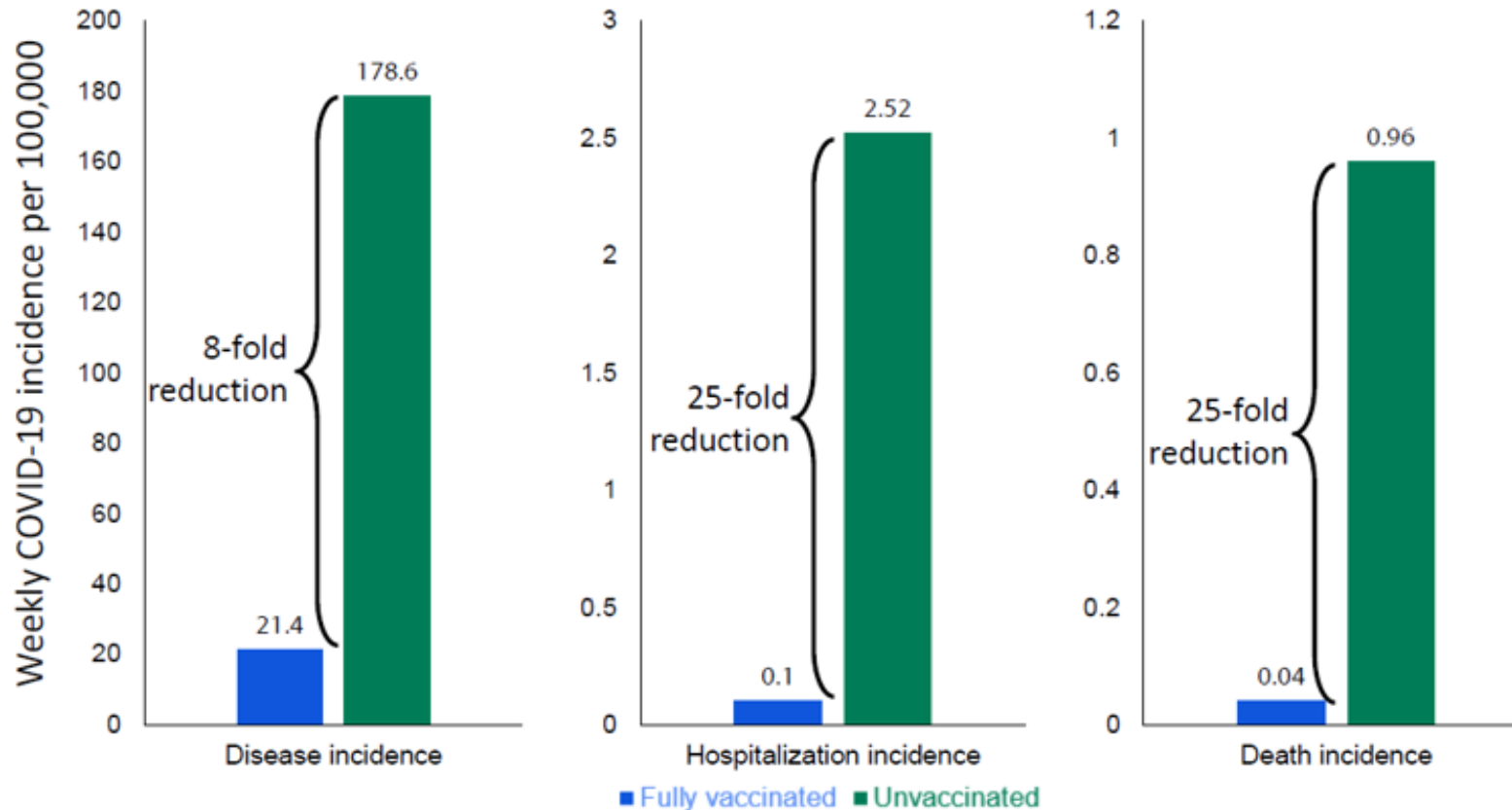
Receipt of CAR-T-cell or hematopoietic stem cell transplant (within 2 years of transplantation or taking immunosuppression therapy)

Moderate or severe primary immunodeficiency (e.g., DiGeorge syndrome, Wiskott-Aldrich syndrome)

Advanced or untreated HIV infection

Active treatment with high-dose corticosteroids (i.e.,  $\geq 20$ mg prednisone or equivalent per day), alkylating agents, antimetabolites, transplant-related immunosuppressive drugs, cancer chemotherapeutic agents classified as severely immunosuppressive, tumor-necrosis (TNF) blockers, and other biologic agents that are immunosuppressive or immunomodulatory.

# Greater risk of disease, hospitalization and death among unvaccinated vs vaccinated people: National Estimates

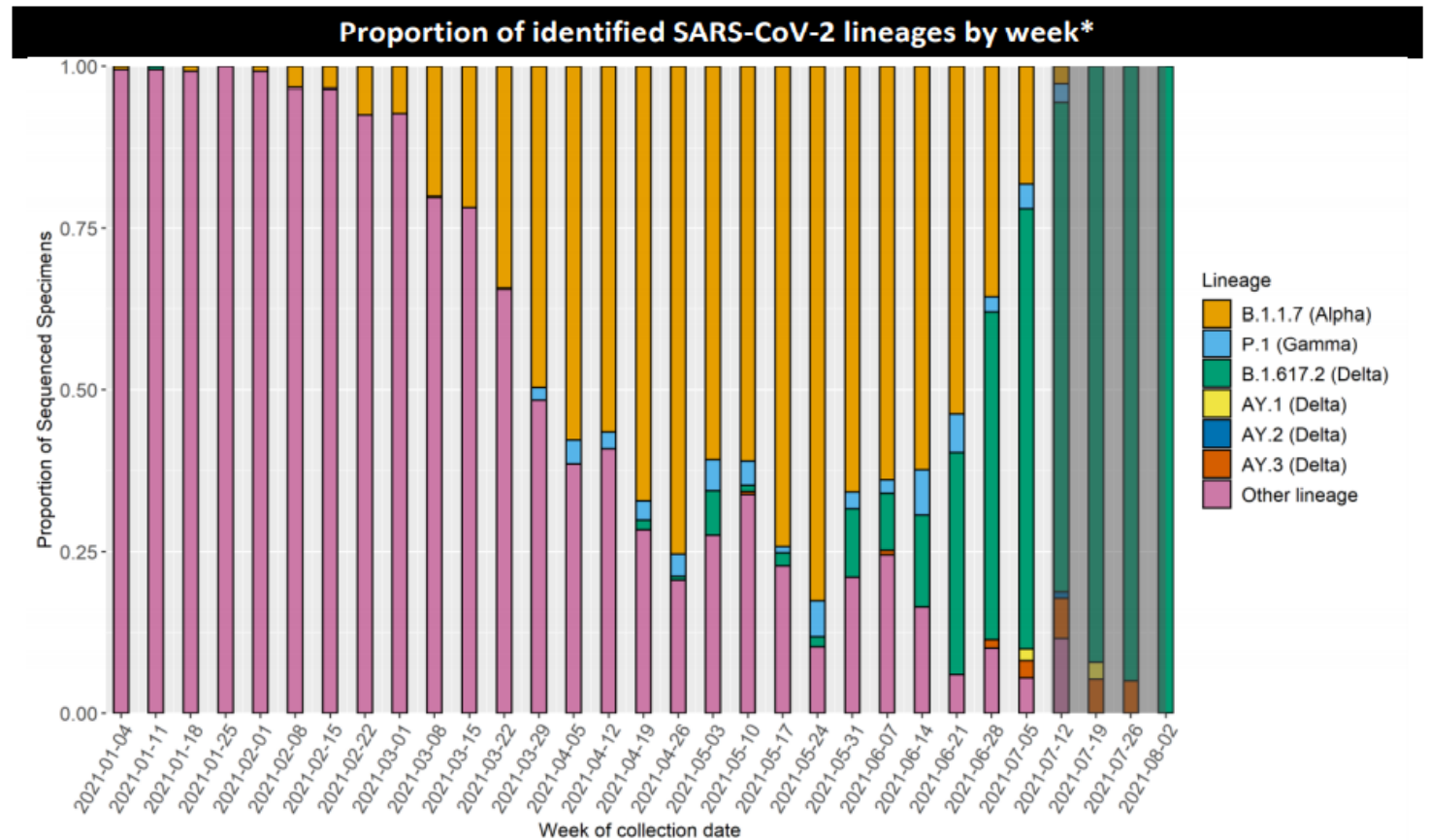


**At current incidence, 35,000 symptomatic infections per week among 162 million vaccinated Americans**

Data from COVID Tracker as of July 24, 2021. Average incidence 100 cases per 100,000 persons per week. Vaccine effectiveness against symptomatic illness = 88% (Lopez Bernal et al. [NEJM 2021](#)), where risk is  $[1 - VE]$  or 12%. Vaccine effectiveness hospitalization (or death) = 96% (Stowe et al. [PHE preprint](#)), where risk is  $[1 - VE]$  or 4%. Rate in unvaccinated = Community rate /  $[(1 - \text{fully vaccinated coverage}) + (1 - VE) * \text{fully vaccinated coverage}]$ . Rate in fully vaccinated =  $(1 - VE) * \text{Rate in unvaccinated}$ . Fully vaccinated coverage proportions were from COVID Data Tracker as of July 24, 2021 (50% for US.).

# SARS-CoV-2 Variants in New Mexico

- COVID-19 cases sequenced, virtually all Delta
- Variant diversity wiped out
- Exponential rise in rate of Delta replacement of other variants
- Stop transmission and stop opportunities for further viral mutations – **GET VACCINATED** – visit [VaccineNM.org](https://www.vaccineNM.org)



\*The dark grey shaded region in each of the figures on this page represents the lag period between specimen collection and genomic sequencing results such that the results may look different when all specimens available for sequencing have been reported.

Source: [COVID-19-VOC-Case-Report\\_08.09.21-.pdf](https://www.nmhealth.org/COVID-19-VOC-Case-Report_08.09.21-.pdf) (nmhealth.org)

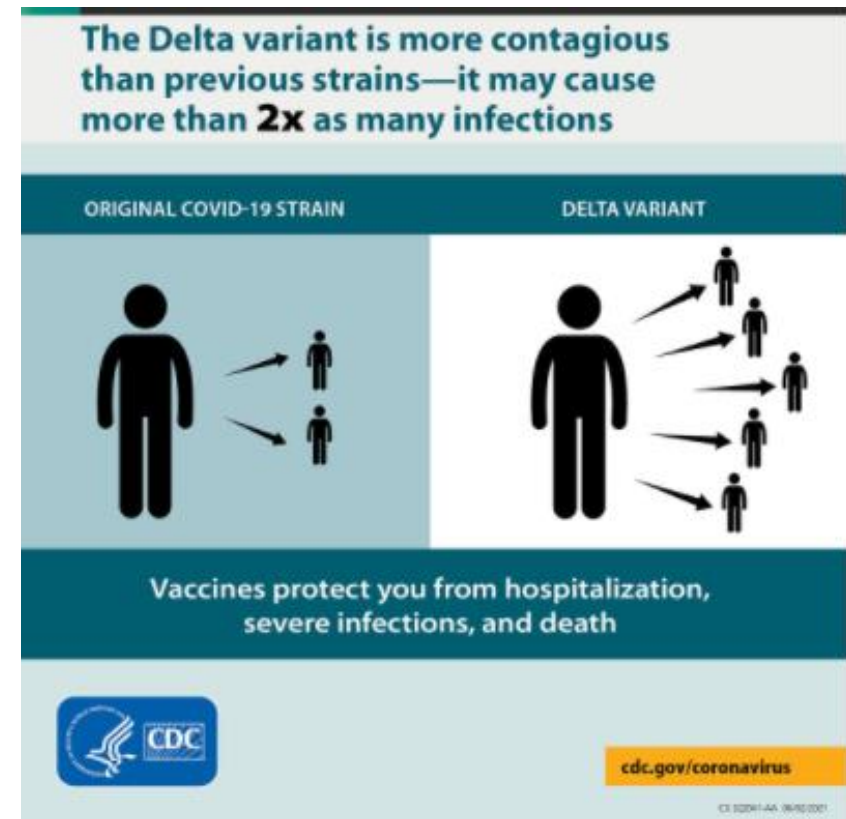
*Investing for tomorrow, delivering today.*

1190 S. St. Francis Drive • Santa Fe, NM 87505 • Phone: 505-827-2613 • Fax: 505-827-2530 • nmhealth.org



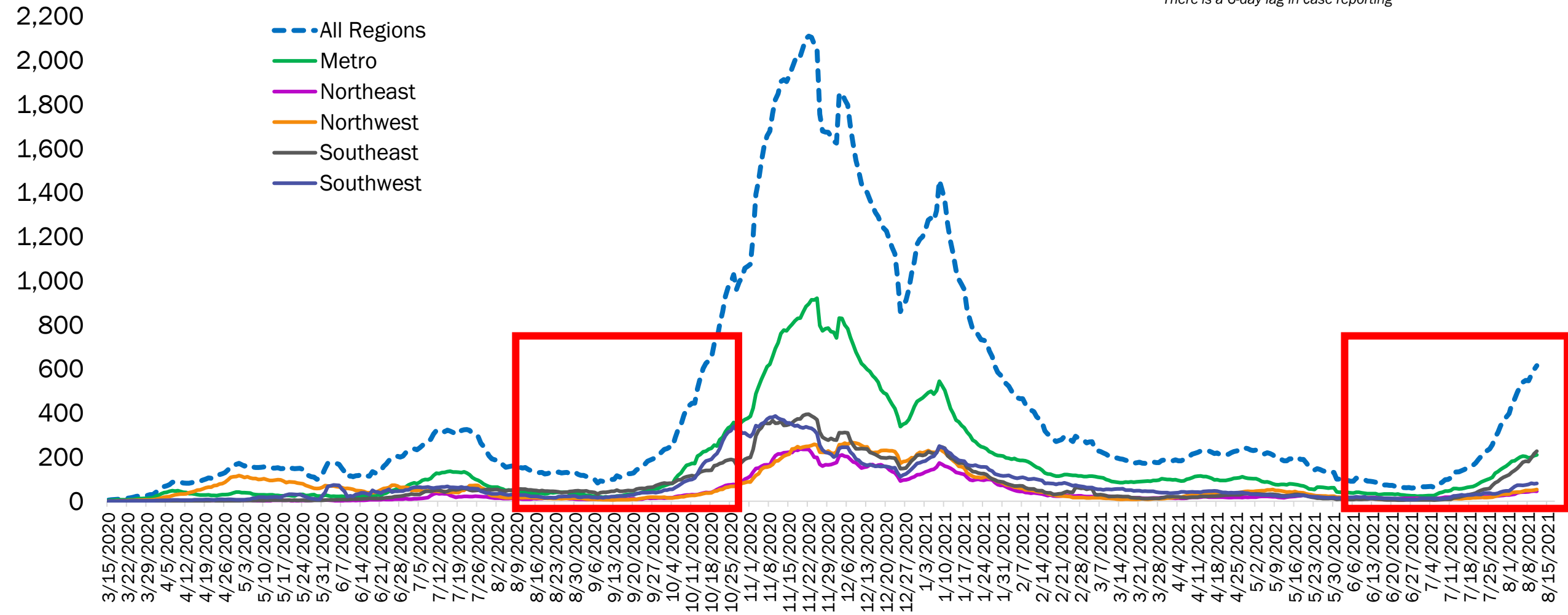
# What we all need to know about the COVID-19 Delta variant...

- The Delta variant is highly contagious
- The Delta variant may cause more severe illness than previous strains in unvaccinated persons
- Unvaccinated people remain the greatest concern although fully vaccinated persons with Delta variant breakthrough infections can spread the virus to others
- Vaccines remain effective against this variant

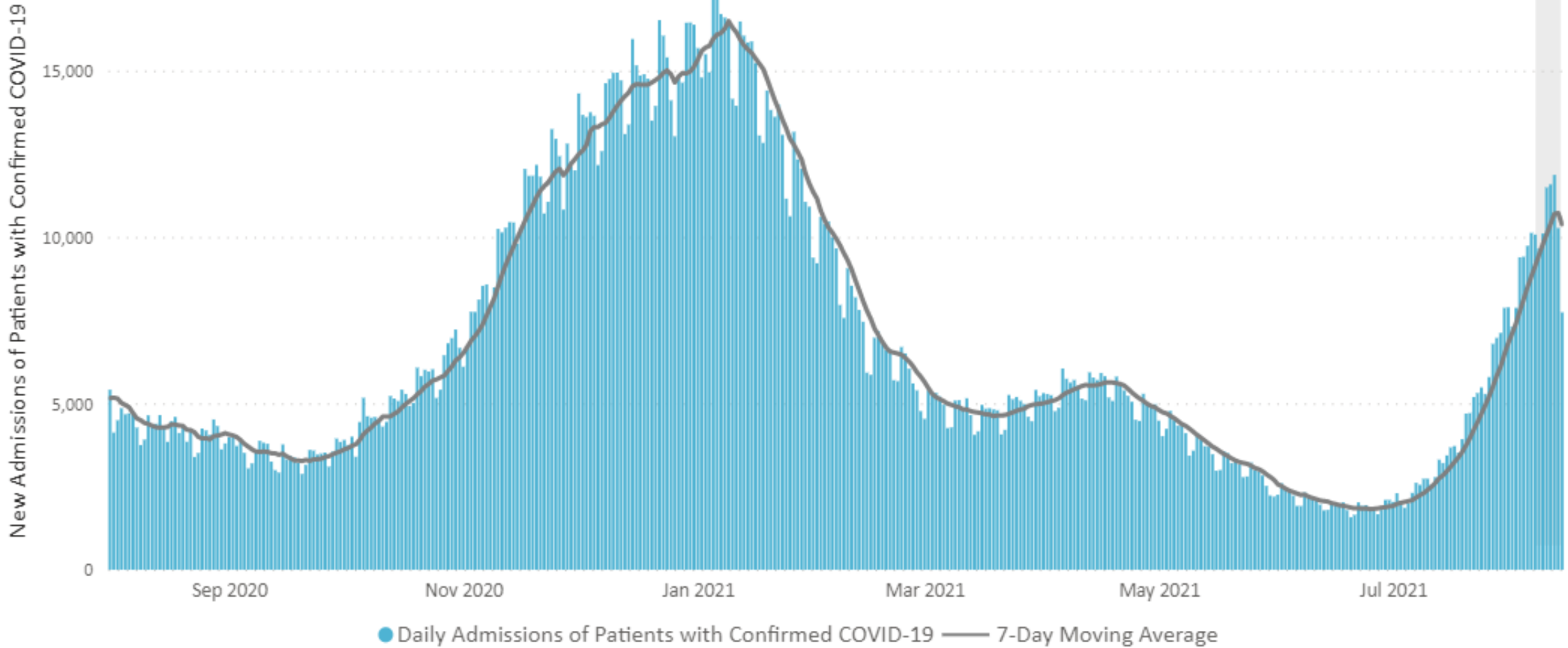


# 7-Day Average of Daily COVID-19 Positive Cases by Date of Specimen Collection, NMDOH Regions 8/17/2021

Source: New Mexico Department of Health  
There is a 6-day lag in case reporting



# New Admissions of Patients with Confirmed COVID-19 in the U.S. August 1, 2020-August 14, 2021

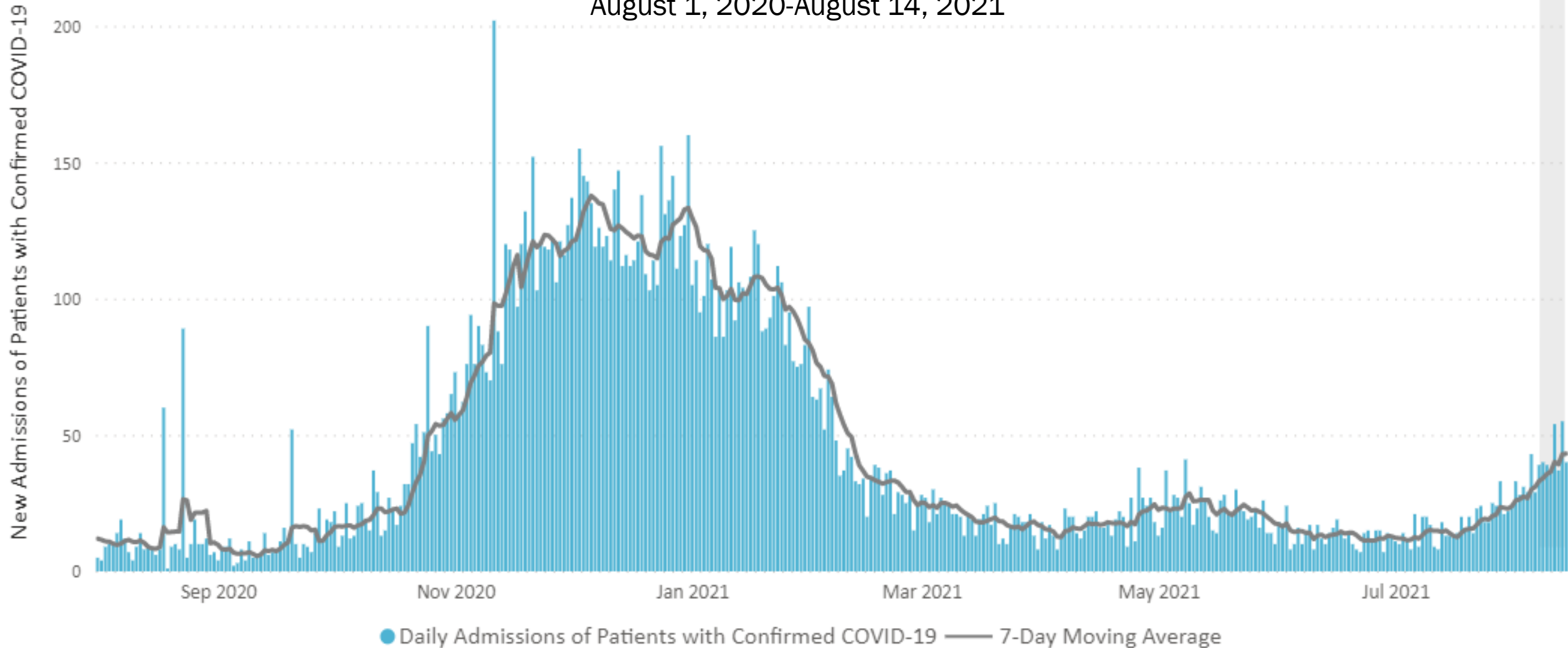




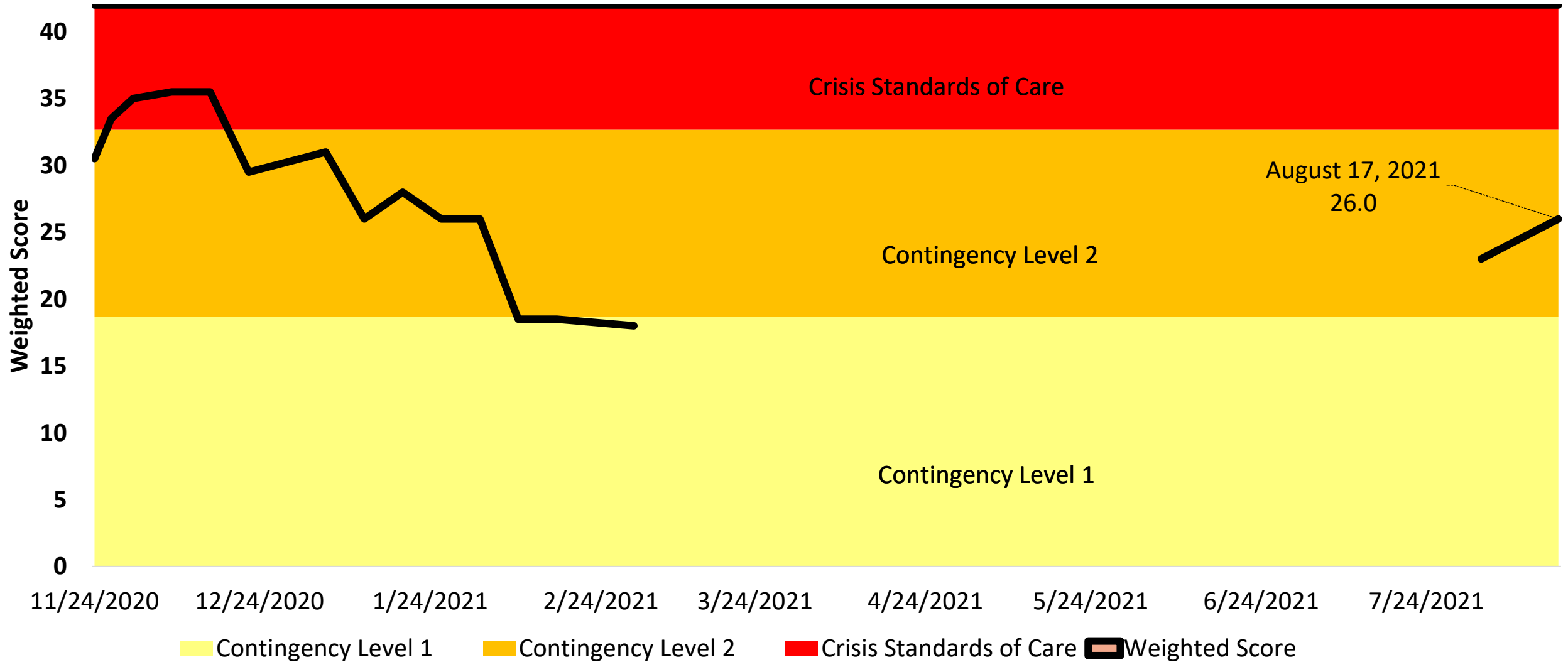
# New Admissions of Patients ages 0-17 with Confirmed COVID-19 in the U.S. August 1, 2020-August 14, 2021



# New Admissions of Patients with Confirmed COVID-19 in New Mexico August 1, 2020-August 14, 2021

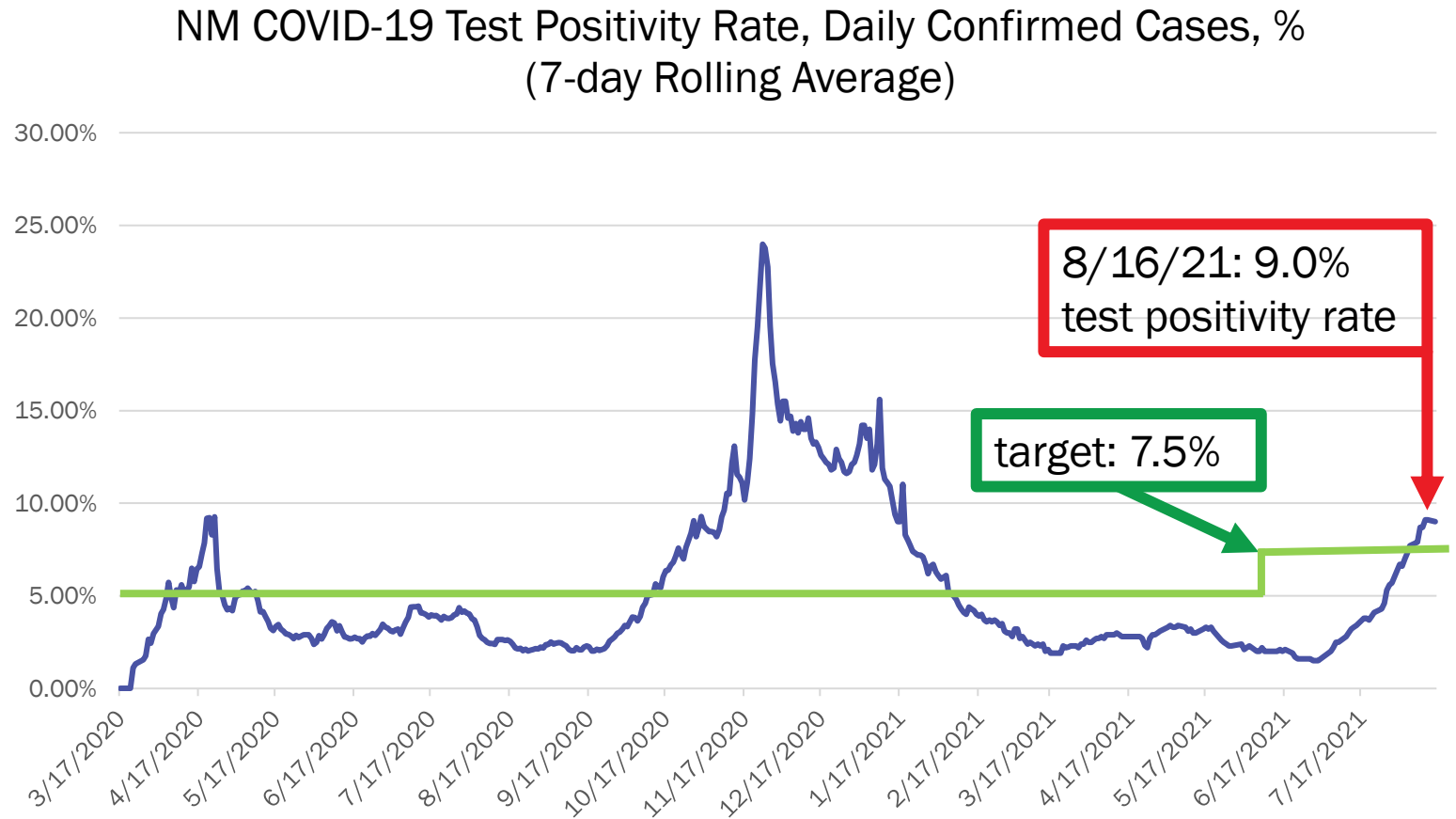


# NM Hospital Systems Capacity Self-Evaluation



# NM COVID-19 Test Positivity Rate Rapidly Increasing

- NM statewide test positivity rate 2.5% on July 8.
- Increased to 9.0% by August 16, which is 1.5% above gating target of 7.5%.



# Get tested for COVID-19 if...

## ...you have COVID-19 symptoms

cough, fever, shortness of breath, chills, repeated shaking with chills, muscle pain, headache, sore throat, congestion or runny nose, nausea or vomiting, diarrhea, and/or loss of taste or smell

...you don't have symptoms but were in **close contact** or are a household member of someone who has tested positive and are in their infectious period, regardless of vaccination status

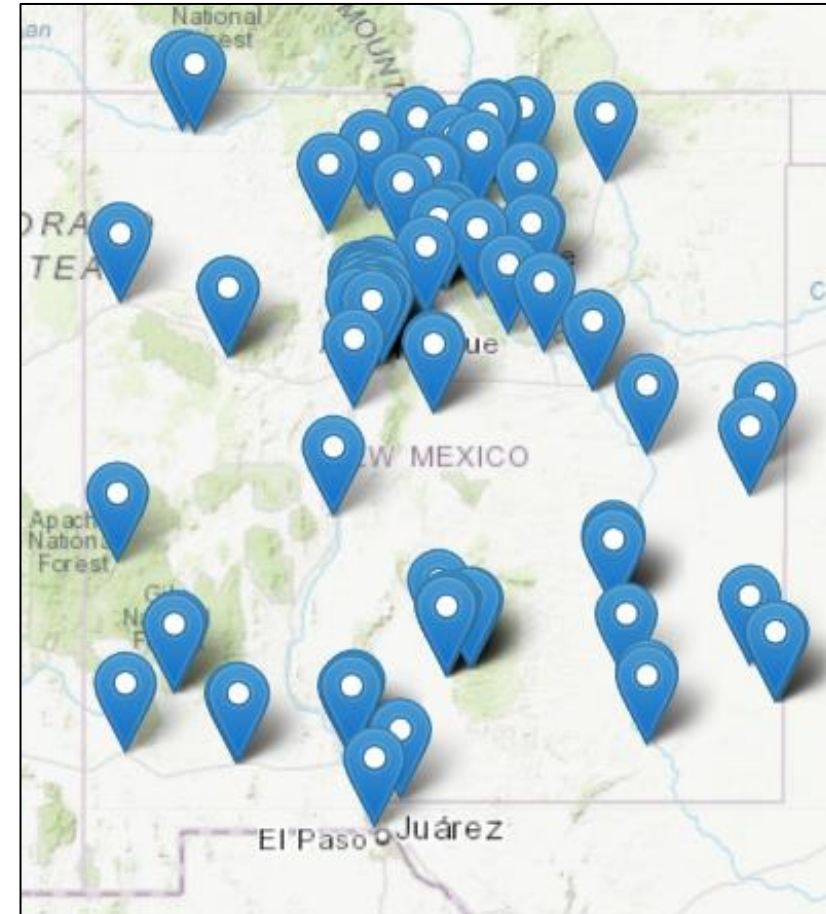
...you don't have symptoms but are **unvaccinated and live or work in a high-risk congregate setting** such as long-term care facilities, detention centers and correctional facilities

...you are a patient scheduled for **surgery or hospital admission, even if you're fully vaccinated**. Some medical facilities may require testing prior to surgery or admission.



# Get Tested for COVID-19!

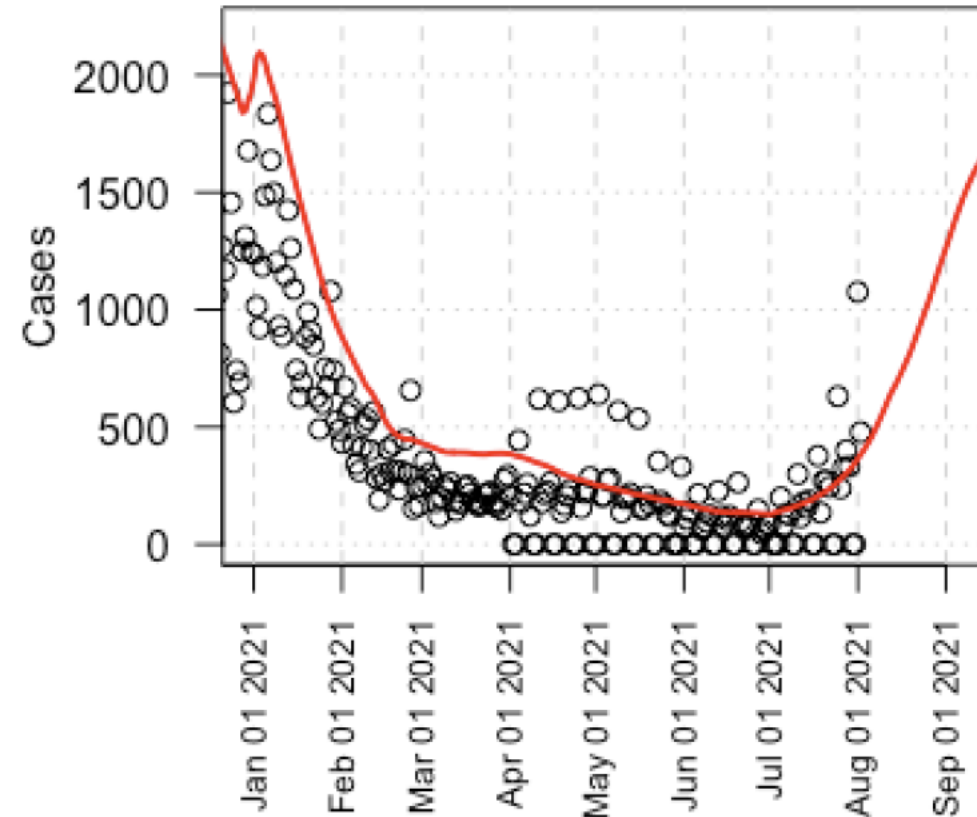
- COVID-19 testing is available at no cost to New Mexicans
- Find a test site near you: [FindATestNM.org](https://www.findatestnm.org)
- Order an at-home, mail-in COVID-19 test through Vault: <https://learn.vaulthealth.com/nm/>



# Where are we going?

- LANL Modeling 8/9/2021 projection for late August/early September:
  - 900-1500 cases per day
  - 2-6 deaths per day
- We are currently tracking along the “worst case scenario” in our modeling

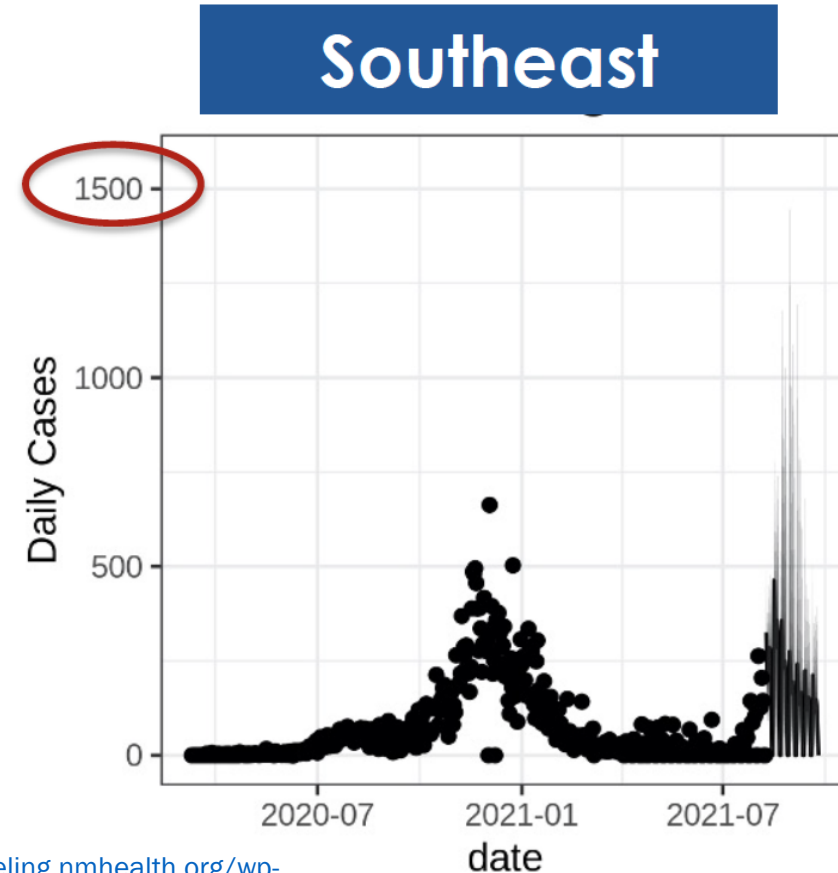
United States\_\_New Mexico



Source: Los Alamos National Labs 8/9/21 Modeling Update: [https://cvmodeling.nmhealth.org/wp-content/uploads/sites/4/2021/08/FinalLANLModelingSlides\\_8\\_9\\_2021MAT.pdf](https://cvmodeling.nmhealth.org/wp-content/uploads/sites/4/2021/08/FinalLANLModelingSlides_8_9_2021MAT.pdf)

# Serious Problems in SE New Mexico

- LANL model is projecting highest SE NM case rates of entire pandemic, up to 1250 per day
- SE NM fully vaccinated rate = 44.1%, lowest NM region
- Regional hub hospital in the SE is seeing increased transfer rates



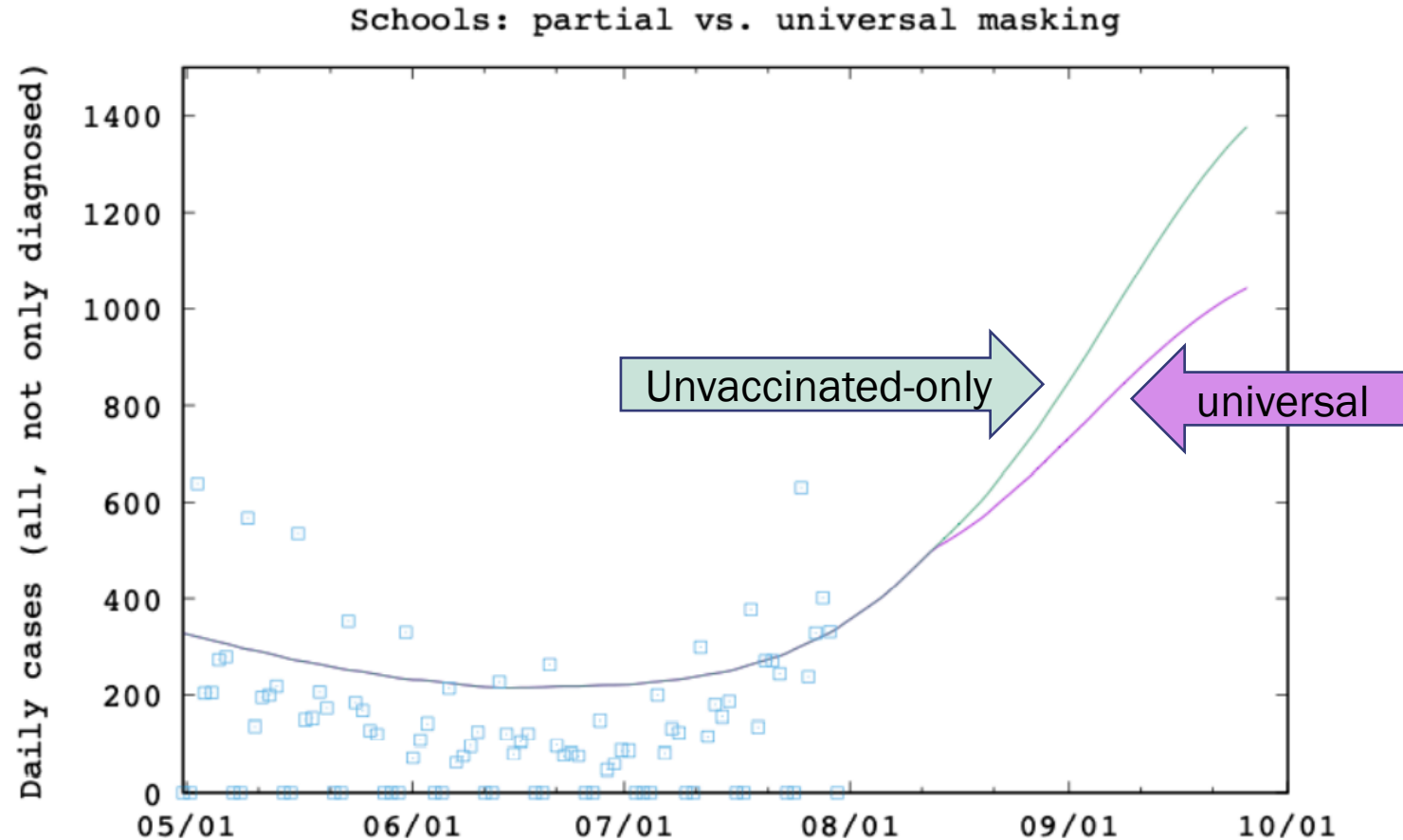
Source: Los Alamos National Labs 8/9/21 Modeling Update: [https://cvmodeling.nmhealth.org/wp-content/uploads/sites/4/2021/08/FinalLANLModelingSlides\\_8\\_9\\_2021MAT.pdf](https://cvmodeling.nmhealth.org/wp-content/uploads/sites/4/2021/08/FinalLANLModelingSlides_8_9_2021MAT.pdf)

County	Population	Total New Cases	New Daily Case Rate/100.000
Eddy	58252	163	93.3
Chaves	64104	137	71.2
Lea	71570	109	50.8
Union	4090	6	48.9
Quay	8396	10	39.7
Curry	49915	58	38.7
Lincoln	19860	23	38.6
Roosevelt	19901	23	38.5
Catron	3533	4	37.7
De Baca	1840	2	36.2
Valencia	75427	70	30.9
Guadalupe	4419	4	30.2
Otero	67700	61	30.0
San Miguel	27969	25	29.8
Torrance	15923	14	29.3
NM Total	2102656	1761	27.9
San Juan	126122	105	27.8
Bernalillo	679590	541	26.5
Sandoval	146415	110	25.0
McKinley	70330	50	23.7
Mora	4566	3	21.9
Dona Ana	218836	113	17.2
Sierra	11076	5	15.0
Rio Arriba	38716	17	14.6
Santa Fe	149635	65	14.5
Los Alamos	18856	8	14.1
Grant	27862	10	12.0
Taos	32513	10	10.3
Socorro	17193	5	9.7
Luna	24444	6	8.2
Hidalgo	4242	1	7.9
Cibola	26801	3	3.7
Colfax	11903	0	0.0
Harding	657	0	0.0



# Partial masking in schools = 400 more cases per day in New Mexico

- Model is for *all* daily cases in NM, not just in schools
- Modeling for school masking has two arms:
  - Universal = **all** students, teachers, and staff wear masks = 1,000 cases per day
  - Unvaccinated only = **all unvaccinated** students, teachers, and staff wear masks = 1,400 cases per day





# Myths and Facts for Childhood Masking

## Myth

## Fact

Wearing a mask reduces oxygen intake and can make it hard for children to breathe.

Masks are made from breathable materials that will not block the oxygen your child needs.

Masks can interfere with children's lung development.

Oxygen flows through and around the mask.

Masks trap carbon dioxide that children normally breathe out.

Carbon dioxide cannot be trapped by breathable materials like cloth or disposable masks.

Wearing a mask can weaken immune system by putting the body under stress.

Wearing a face mask does not weaken your immune system or increase your chances of getting sick if exposed to the COVID-19 virus.

Teachers and school staff do not support childhood masking.

Teachers' unions, including American Federation of Teachers, support required mask wearing to deal with the changing realities of virus transmission.

# The virus is changing - GET VACCINATED this week! Get tested if you have symptoms!

- The delta COVID variant is spreading up to 4x more rapidly and resists some treatments.
- Get tested if you think you have COVID-19 or have been exposed to someone who is positive.
- If you have COVID-19, learn if you're eligible for monoclonal antibody treatment.
- Be especially careful indoors no matter where you live in NM.

**CASE COUNTS REMAIN TOO HIGH. WE ALL STILL MUST FIGHT THE VIRUS.**

- Wash hands, clean surfaces, cough into tissue/elbow.
- Everyone mask up and maintain social distancing (minimum 6').
- Get needed preventive healthcare.
- Get vaccinated!

**PROTECT  
NEW MEXICO**  
**WEAR A MASK**  
**SLOW THE SPREAD**



#MaskUp  
#ProtectNM