

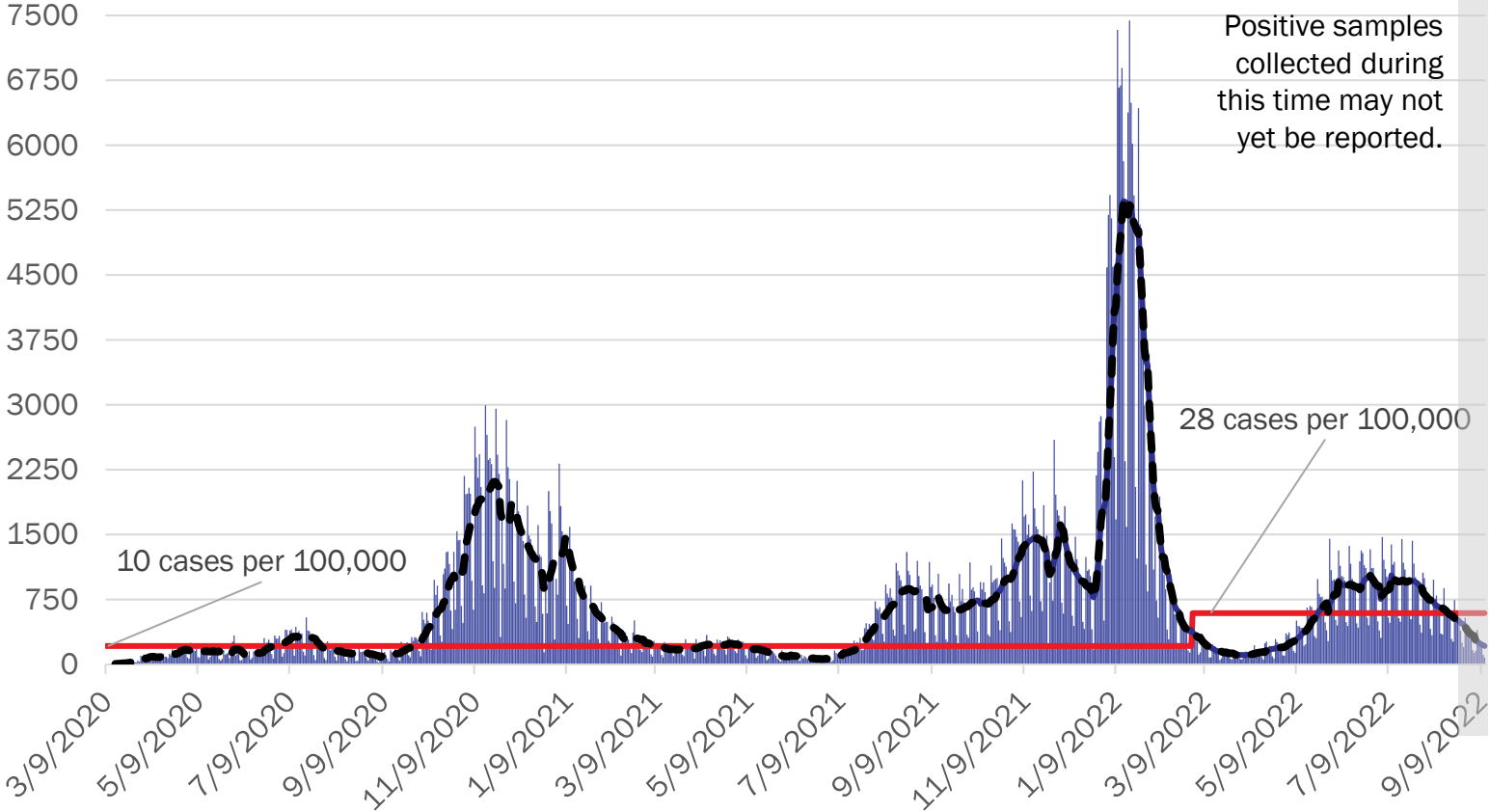
COVID-19 Day 919 Press Update

September 15, 2022

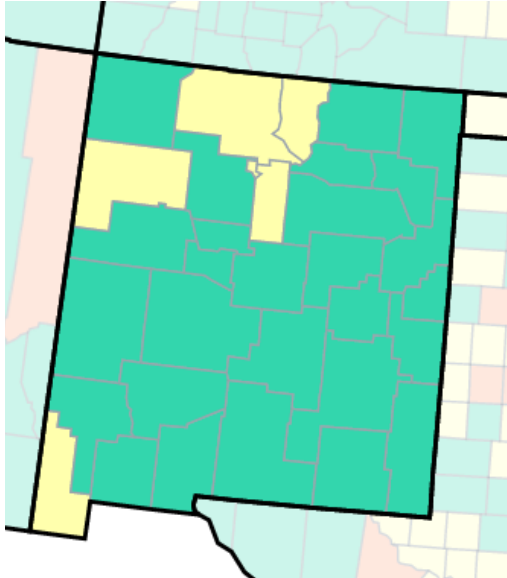
DOH Acting Secretary David R. Scrase, M.D., M.H.S.A.
DOH Deputy Secretary and Acting State Epi, Laura C. Parajon, M.D., M.P.H.,
Aging and Long-Term Services Department Secretary Katrina Hotrum-Lopez

New Mexico COVID-19 cases

New Mexico COVID-19 Cases by Date of Specimen Collection
September 12, 2022



Average daily case rate per 100,000 population in the previous 7 days by NM County
09/05/2022 - 09/11/2022



NM COVID-19 Community Level	Week # of NM Counties (%)
Low	27 (82%)
Medium	6 (18%)
High	0 (0%)



[CDC COVID Data Tracker: County View](#)

Investing for tomorrow, delivering today.

COVID-19-related hospitalizations have plateaued (7.1% on ventilation)

COVID-19 Positive Patients In NM Hospitals



COVID-19 Positive Ventilated Patients in NM Hospitals



Total Deaths:	8,493	Deaths in the Last 14 Days:	12
---------------	--------------	-----------------------------	-----------



“UP-TO-DATE” - New Definition

- You are up to date with your COVID-19 vaccines if you have:
- Completed a COVID-19 vaccine primary series AND
- Received the *most recent* booster dose recommended for you by CDC



[Stay Up to Date with COVID-19 Vaccines Including Boosters | CDC](#)

New Omicron booster vaccines offer enhanced protection from COVID-19

- BA.5 subvariant accounts for an estimated 90% of the COVID-19 cases in New Mexico:
 - Wait 60 days after your last shot
 - Omicron booster manufactured by Pfizer-BioNTech for people ages 12+
 - Omicron booster manufactured by Moderna for adults ages 18+
- Sign up online at: vaccineNM.org, vaccineNM.org/kids, vaccine.gov, or through your personal medical provider or pharmacist
- Call 1-855-600-3453 (option 3, option 9 for Spanish)



MICHELLE LUJAN GRISHAM
Governor
DAVID R. SCRASE, M.D.
Acting Cabinet Secretary

PUBLIC HEALTH ORDER
NEW MEXICO DEPARTMENT OF HEALTH
ACTING SECRETARY DAVID R. SCRASE, M.D.

August 12, 2022

Public Health Emergency Order Clarifying
All Orders, Directives, Guidance And Advisories Remaining
in Effect and Imposing Certain Ongoing Public Health Measures

(4) All facilities subject to paragraphs 1 and 2 above are advised to evaluate Centers for Disease Control and Prevention ("CDC") community transmission levels in their locality and adopt more stringent precautions, if needed. CDC community transmission levels can be accessed via the following link: https://covid.cdc.gov/covid-data-tracker/#county-view?list_select_state=New+Mexico&data-type=Risk&null=Risk.

(5) All New Mexicans should remain aware of the importance of protecting our most vulnerable population groups, including those who are older, immune compromised, or have other pre-existing conditions that place them at high risk for serious COVID illness. Additional information from the CDC about risks for illness can be accessed via the following link: <https://www.cdc.gov/coronavirus/2019-ncov/need-extra-precautions/people-with-medical-conditions.html>.

(6) All New Mexicans should be aware that there are now tools that can be used to direct both isolation for those who have acquired COVID and quarantine for those who have been exposed to COVID. In these two situations, all New Mexicans are strongly encouraged to use the CDC Quarantine and Isolation Calculator that can be accessed via the following link: <https://www.cdc.gov/coronavirus/2019-ncov/your-health/quarantine-isolation.html>.

(7) All businesses, establishments, and non-profit entities are recommended to adhere to the latest CDC guidance for Workplace and Businesses available via the following link: <https://www.cdc.gov/coronavirus/2019-ncov/community/workplaces-businesses/index.html>. These same entities are also recommended to follow the CDC Guidance for Specific Industries and Occupations which can be accessed here: <https://www.cdc.gov/coronavirus/2019-ncov/community/workplaces-businesses/specific-industries.html>. Businesses, establishments, and non-profit entities are further recommended to adhere to CDC guidance for Cleaning and



Omicron Booster Updates for New Mexico Assisted Living Facilities (ALFs) & Nursing Homes

Katrina Hotrum-Lopez

Cabinet Secretary
Aging & Long-Term Services Department



Omicron booster rollout for long-term care facilities has begun!

Goal is to complete booster rollout in the next 6 weeks for all facilities:

- ALTSD is partnering with 2 pharmacy providers to provide COVID-19 & flu vaccines for ALFs and nursing homes
- Senior centers will be coordinating vaccination clinics at their sites across the state, including offerings of flu vaccines in addition to the COVID-19 booster
- Included population: 236 ALFs and 67 nursing homes (ICFs is 43)





Staff and residents will be provided with vaccines and education

- New regulations require that staff and residents need to be offered and continuously educated on the vaccine
- If you or your loved one have not received this information, please reach out to 1-800-432-2080 or 1-866-451-2901



Monkeypox Update

Monkeypox cases in the US and NM

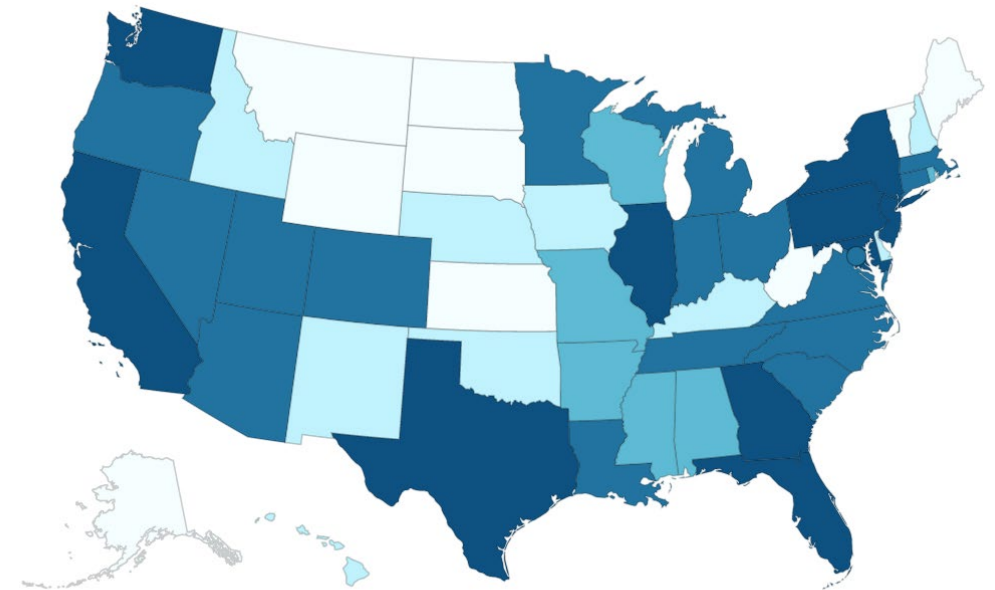
- Monkeypox is a viral infection in the same family as smallpox.
 - It does not usually cause serious illness.
 - However, monkeypox can result in painful lesions or sores but rarely results in hospitalization or death (1 death in US).
- Monkeypox spreads through close physical contact between two people, and anybody can get monkeypox – regardless of sexual orientation, gender or gender identity.

Total confirmed monkeypox/orthopoxvirus

Cases in the US: **22,774**

Cases in New Mexico: **33**

Sept. 14, 2022



Territories **PR**

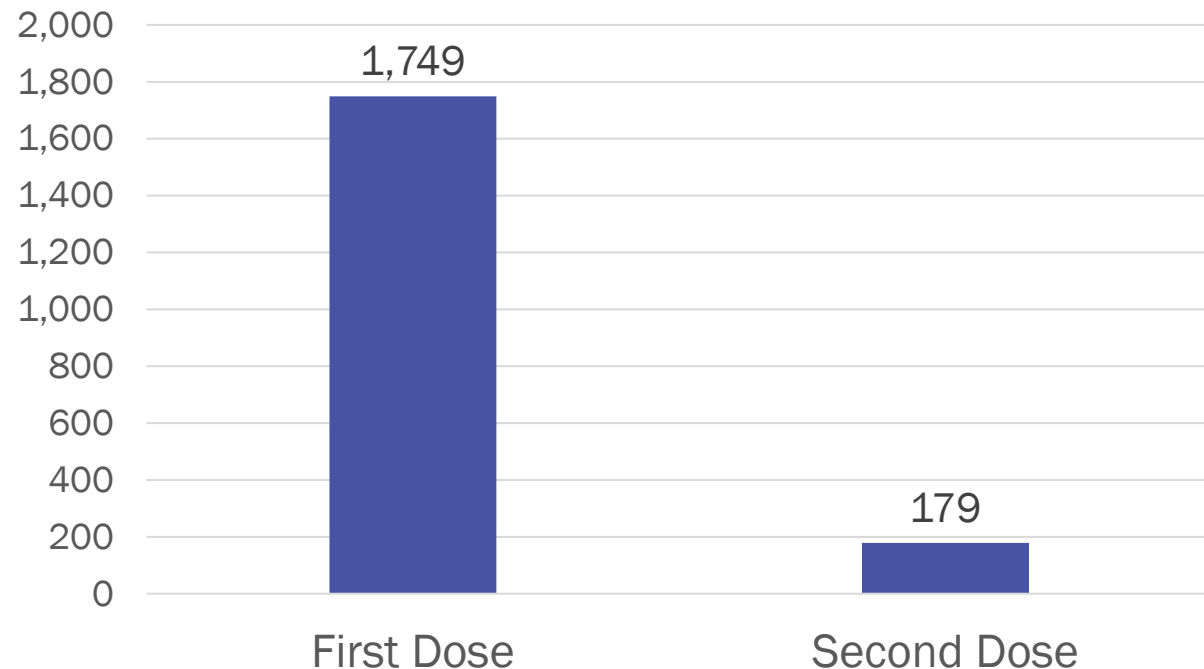


NM Monkeypox Vaccine Administration

JYNNEOS vaccines administered in NM:

- First doses: **1,749**
- Second doses: **179**

MPX Vaccine First and Second Doses Administered in NM, 07/12/22-09/12/22



New Mexico Monkeypox Cases Data

33 state total reported cases from start of outbreak to September 14, 2022

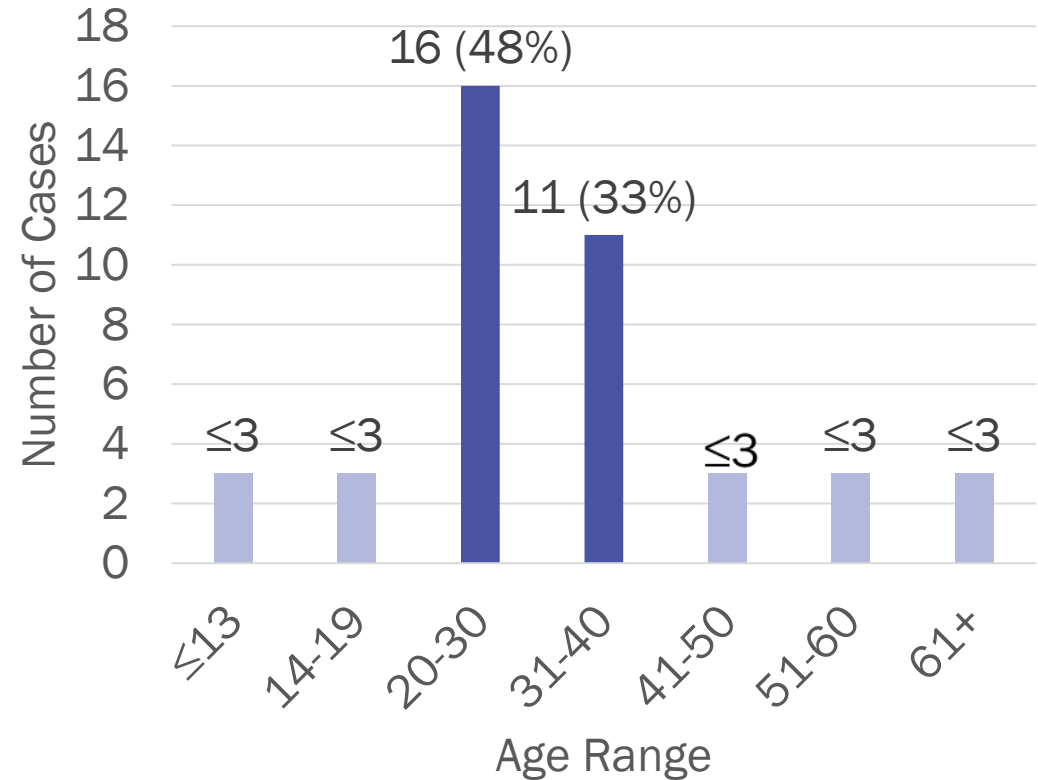
Location	Number of Cases	Percentage of State Total
New Mexico	33	100%
Bernalillo County	22	67%
Santa Fe County	4	12%
All other counties, individually	≤3	21%

Hospitalizations to date: 1

Deaths to date: 0

- The number of hospitalizations and deaths are those that are reported through public health investigation, may be incomplete, and are subject to change.

NM Monkeypox Cases by Age Range



*To protect the health privacy of its residents, New Mexico does not report data where there are less than four cases (including 0) - [New Mexico Rule for Small Numbers and Public Data Release 2006.doc \(nm.gov\)](#)

New Mexico Monkeypox Cases Data

33 state total reported cases from start of outbreak to September 14, 2022

Sex	Number of Cases
Male	Suppressed
Female	≤3
State Total	33

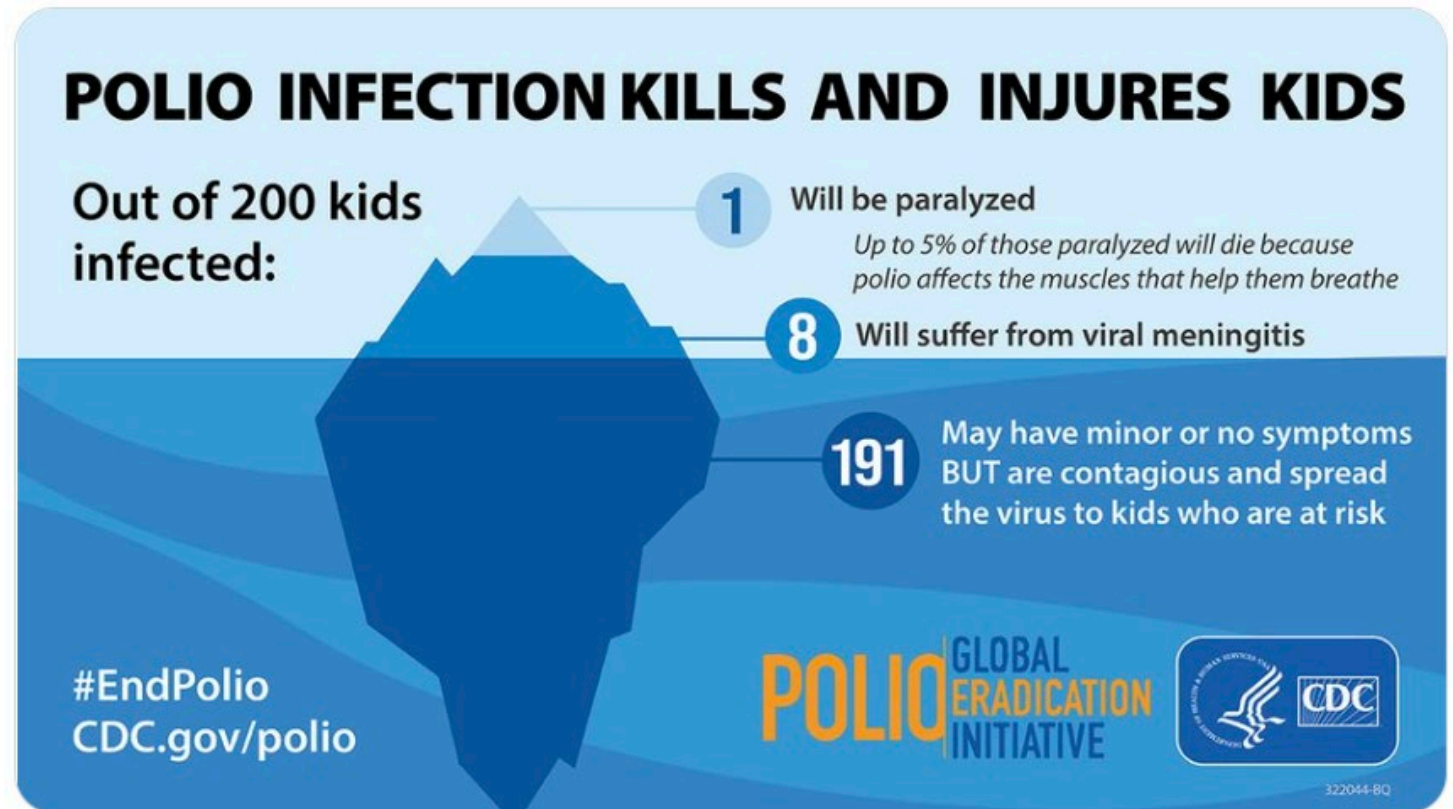
Race	Number of Cases
American Indian or Alaskan Native	≤3
Asian	≤3
Black or African American	≤3
White	23
Unknown	4
State Total	33

Ethnicity	Number of Cases
Hispanic or Latino	14
Non-Hispanic or Latino	17
Unknown	≤3
State Total	33

*To protect the health privacy of its residents, New Mexico does not report data where there are less than four cases (including 0) - [New Mexico Rule for Small Numbers and Public Data Release 2006.doc \(nm.gov\)](#)

Polio case identified in NY state

- Unvaccinated man infected by polio in Rockland County, NY
- Vaccination rate in the County was 60% for polio
- Polio has been found in City of NY's wastewater



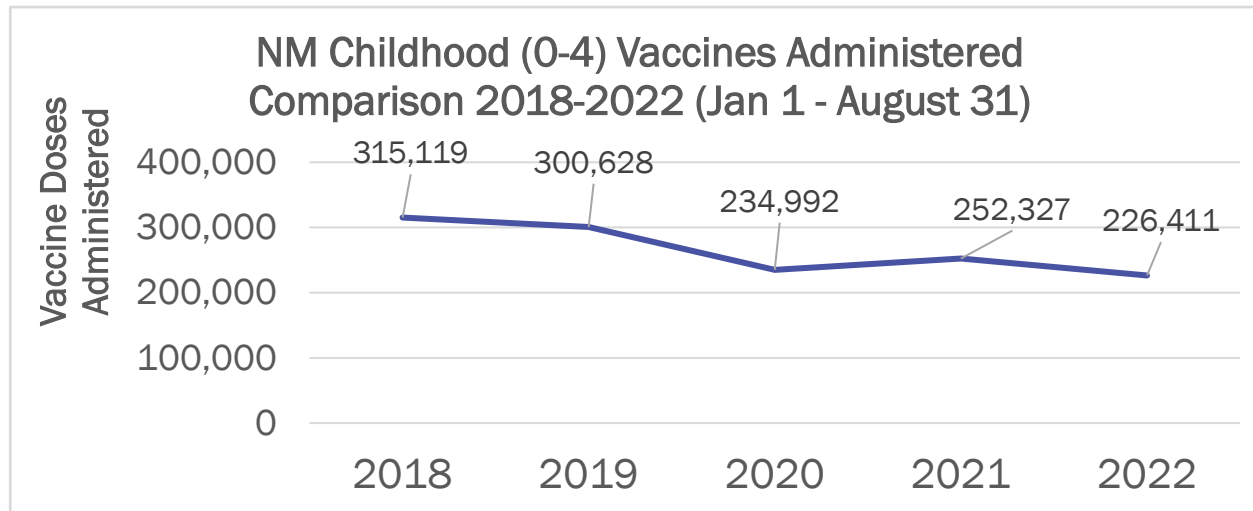
Best protection against polio and spread of polio is to be fully vaccinated

Good News:

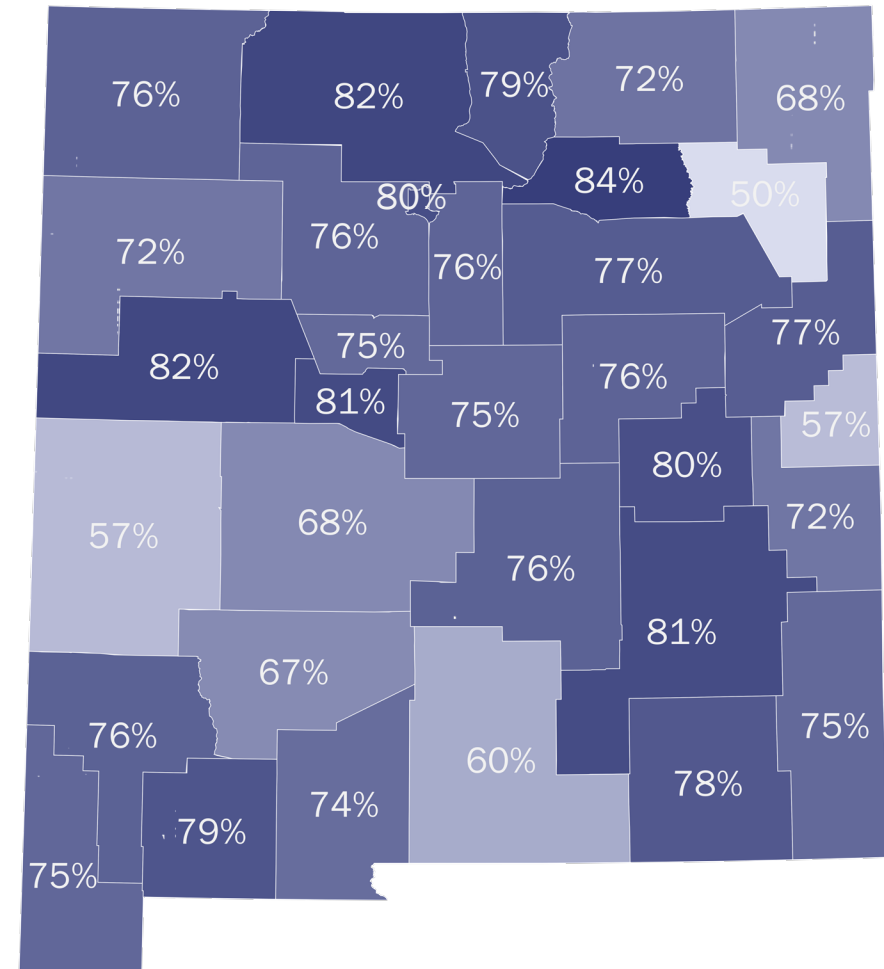
- NM ranks #7 for polio vaccine coverage in the US

Bad News:

- Vaccinations dropped off during the pandemic



NM Polio Vaccine Coverage Rates 2022, 6yrs, 4 doses

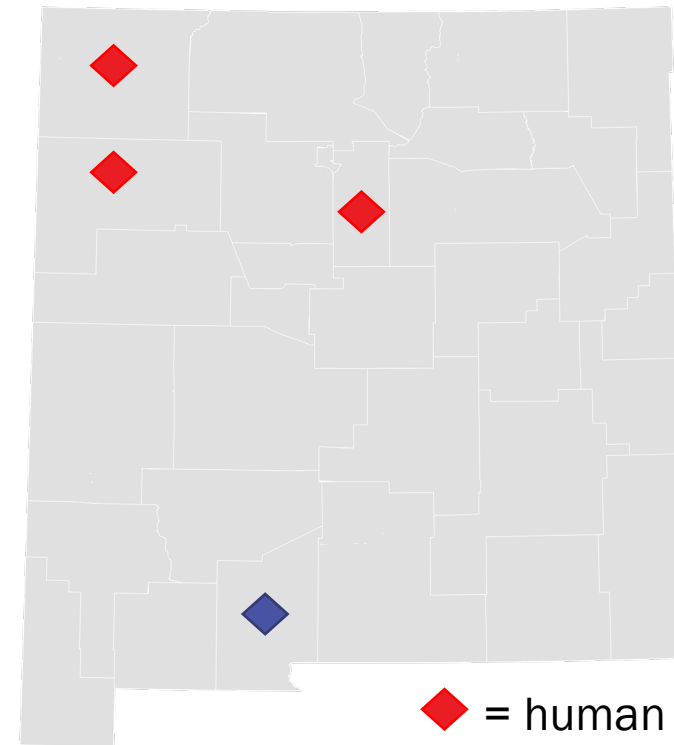


West Nile Virus in New Mexico

- West Nile virus (WNV) is the leading cause of mosquito-borne disease in the continental US
- It is most commonly spread to people by the bite of an infected mosquito



NM Counties with at Least One Case of West Nile Virus in 2022
September 15, 2022



◆ = human case
◆ = animal case

Symptoms of West Nile Virus (WNV) and how to protect yourself

Symptoms of WNV:

- Fever
- Headache
- Body aches
- Vomiting
- Diarrhea
- Fatigue
- Skin rash

Protect yourself:

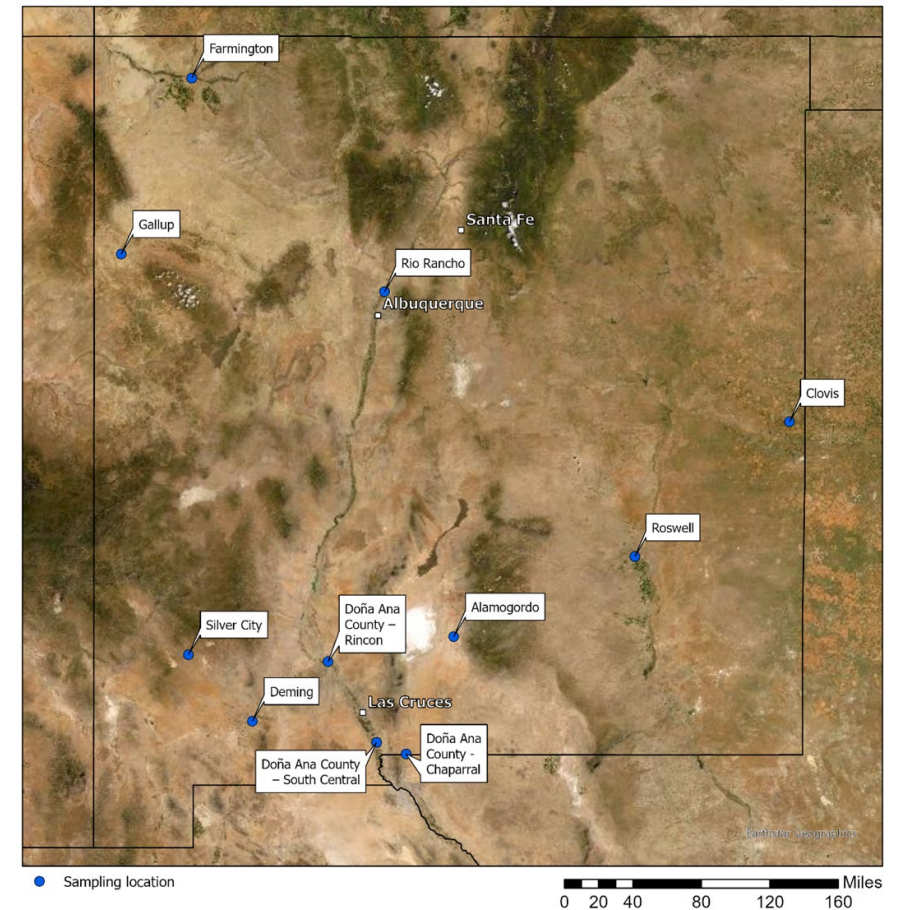
- Mosquitoes bite evening to morning:
 - Use mosquito repellent when outside
 - Wear a long-sleeved shirt and long pants outside
- Mosquitoes breed in standing water
 - Drain anything that holds water (buckets, pet bowls, etc.) twice a week



Wastewater Monitoring

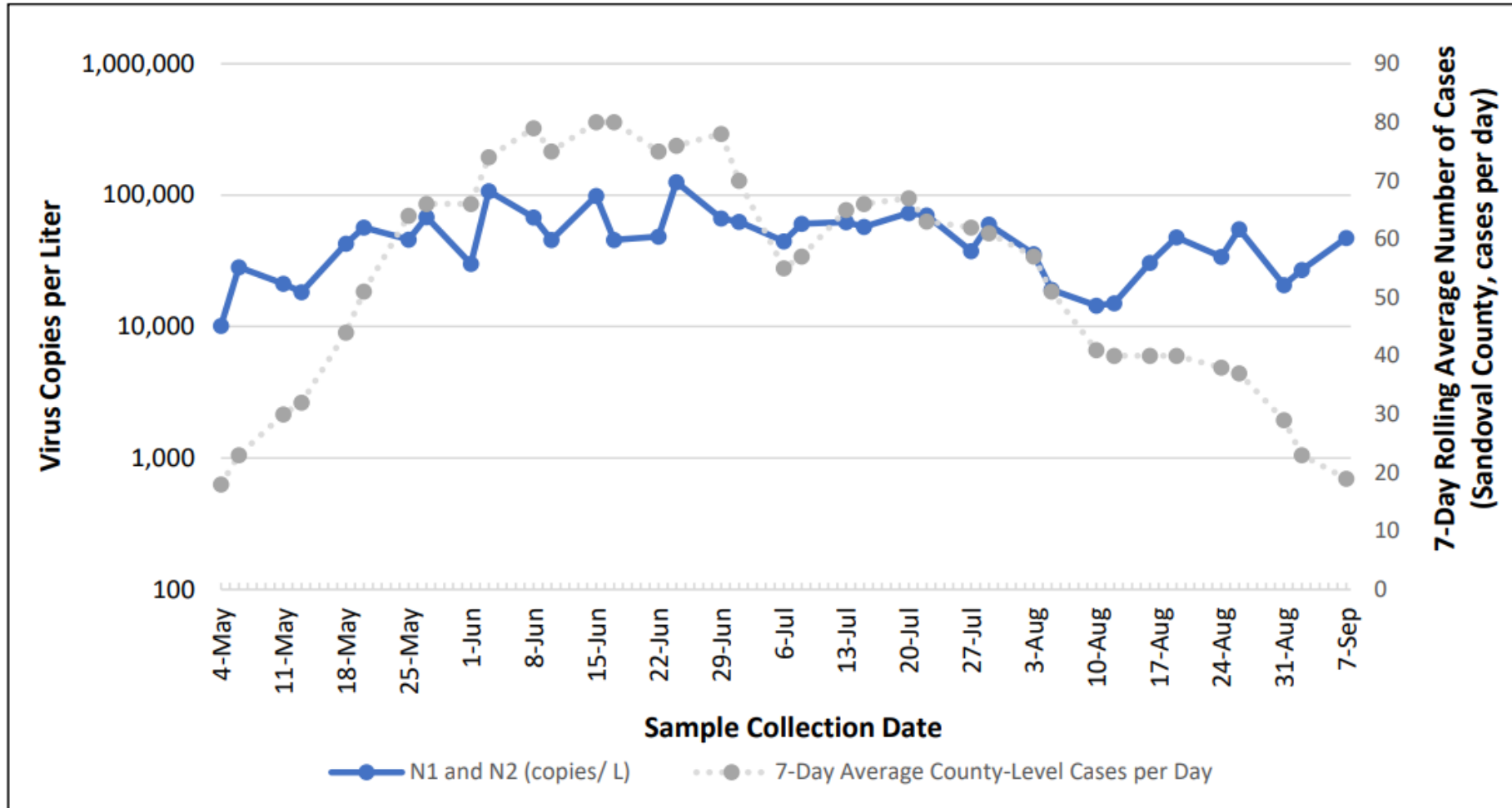
COVID-19 Wastewater Monitoring

- NMDOH is currently monitoring for COVID-19 in wastewater collected at municipal wastewater treatment plants across the state
- Symptomatic and asymptomatic individuals who are infected with SARS-CoV-2 shed the virus in their feces
- Data posted [online. \(Updated Mon\)](#)
- There are currently 11 wastewater systems participating in the voluntary program with NMDOH



Sept. 13 Wastewater report: https://cv.nmhealth.org/wp-content/uploads/2022/09/COVID-19-Wastewater-Report_09_13_22.pdf

Rio Rancho



Sept. 13 Wastewater report: https://cv.nmhealth.org/wp-content/uploads/2022/09/COVID-19-Wastewater-Report_09_13_22.pdf

Investing for tomorrow, delivering today.



SUPPLEMENTAL NUTRITION ASSISTANCE PROGRAM (SNAP) RENEWALS

- SNAP eligibility resumes October 2022
- *SNAP customers must submit their renewal applications to determine eligibility or risk losing food benefits.*
- The fastest and easiest way to renew their SNAP benefits is electronically using their YESNM account at www.yes.state.nm.us.
- For customers who prefer traditional options, they may submit:
 - By mail to CASA, P.O. Box 830, Bernalillo, NM 87004
 - In-person at a local HSD Income Support office



There are 494,620 SNAP customers in New Mexico.

Our Community is Safer When We Do Our Part.

- Know the [COVID-19 Community Level](#) where you live.
 - Follow the CDC guidance for Low, Medium and High levels.
- **Get vaccinated.**
 - Stay up-to-date on vaccines and boosters.
- **Get tested.**
 - At the first sign of symptoms.
- **Get treated.**
 - Seek treatment right away, even if you have one risk factor.
- **Get a well-fitting mask.**
 - Masks are effective and provide an extra layer to safeguard.

