

# COVID-19 Day 715

## Press Update

February 23, 2022

DOH Acting Secretary David R. Scrase, M.D., M.H.S.A.  
DOH Communications Director Jodi McGinnis Porter

# New Leadership at NMDOH



**José A. Acosta, MD, MBA**  
Chief Medical Officer

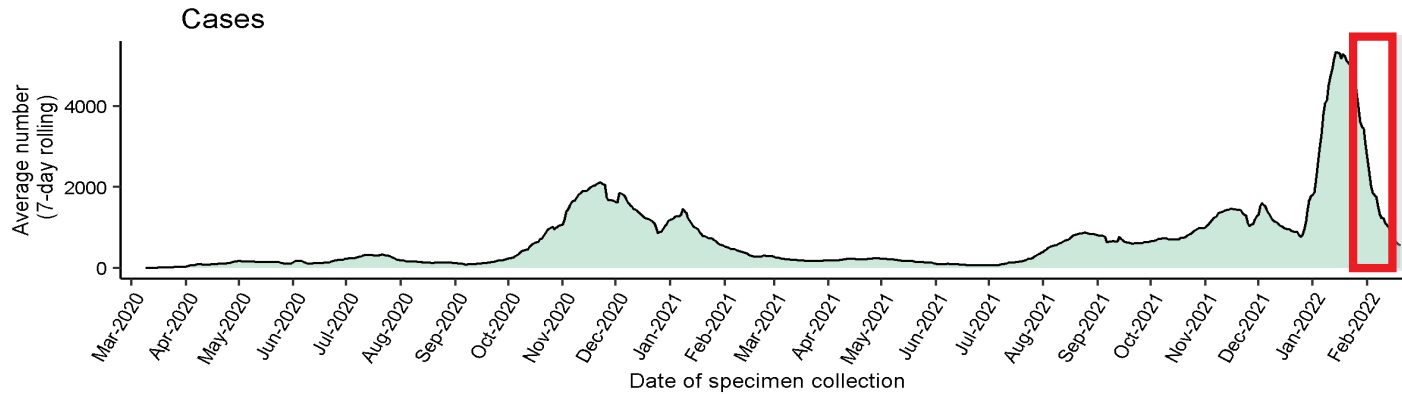


**Andrea Lawrence**  
Director of Marketing



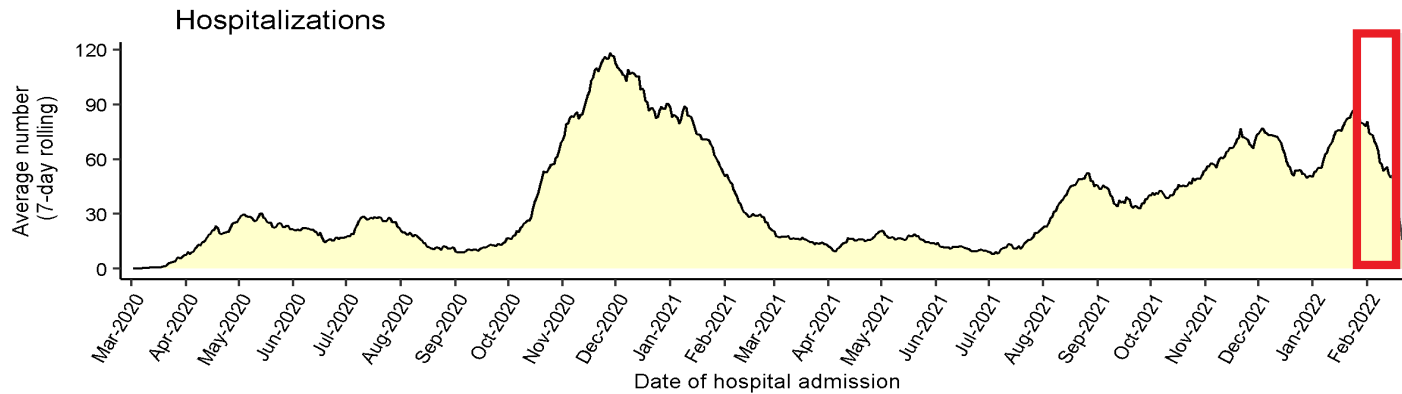
**Jodi McGinnis Porter**  
Director of Communications

# COVID-19 Cases, Hospitalizations, and Deaths



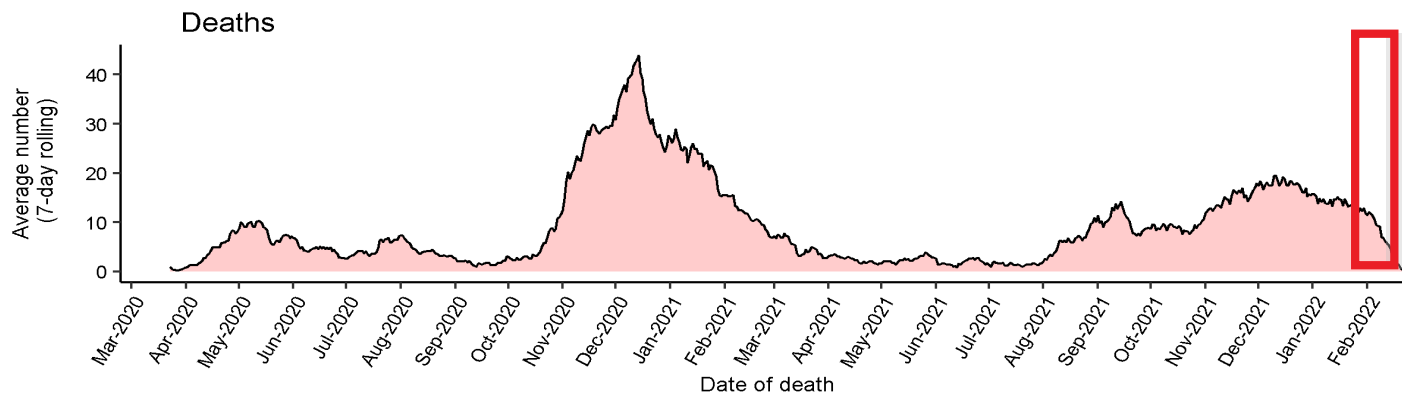
Total Cases	Last 7 Days	Total Cases % of NM
508,863	4,656	24.2%

7-day case rate on 2/9/22: 13,432



Total Hospitalizations	Last 7 Days	Total Hosp. % of Cases
25,659	172	5.0%

7-day hospitalization rate on 2/9/22: 370



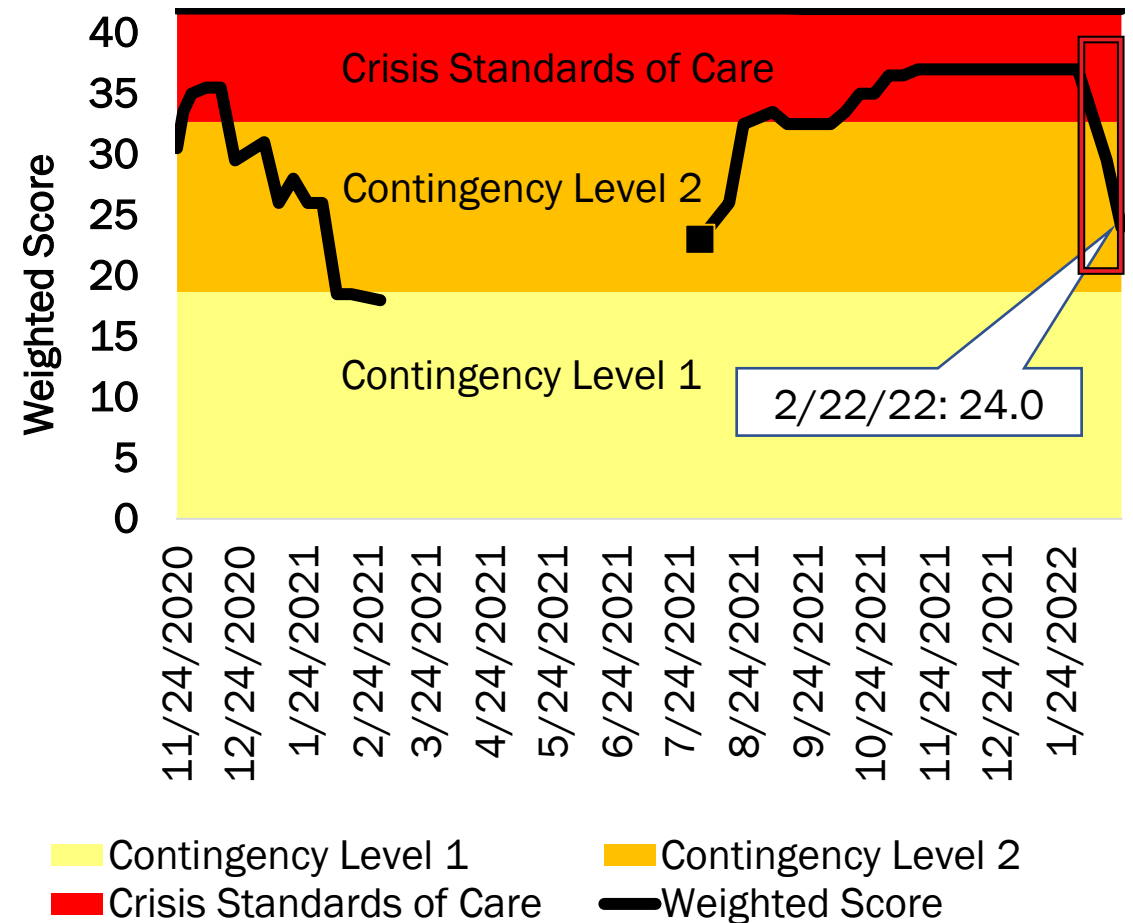
Total Deaths	Last 14 Days	Total Deaths % of Cases
6,794	75	1.3%

14-day mortality rate on 2/9/22: 78

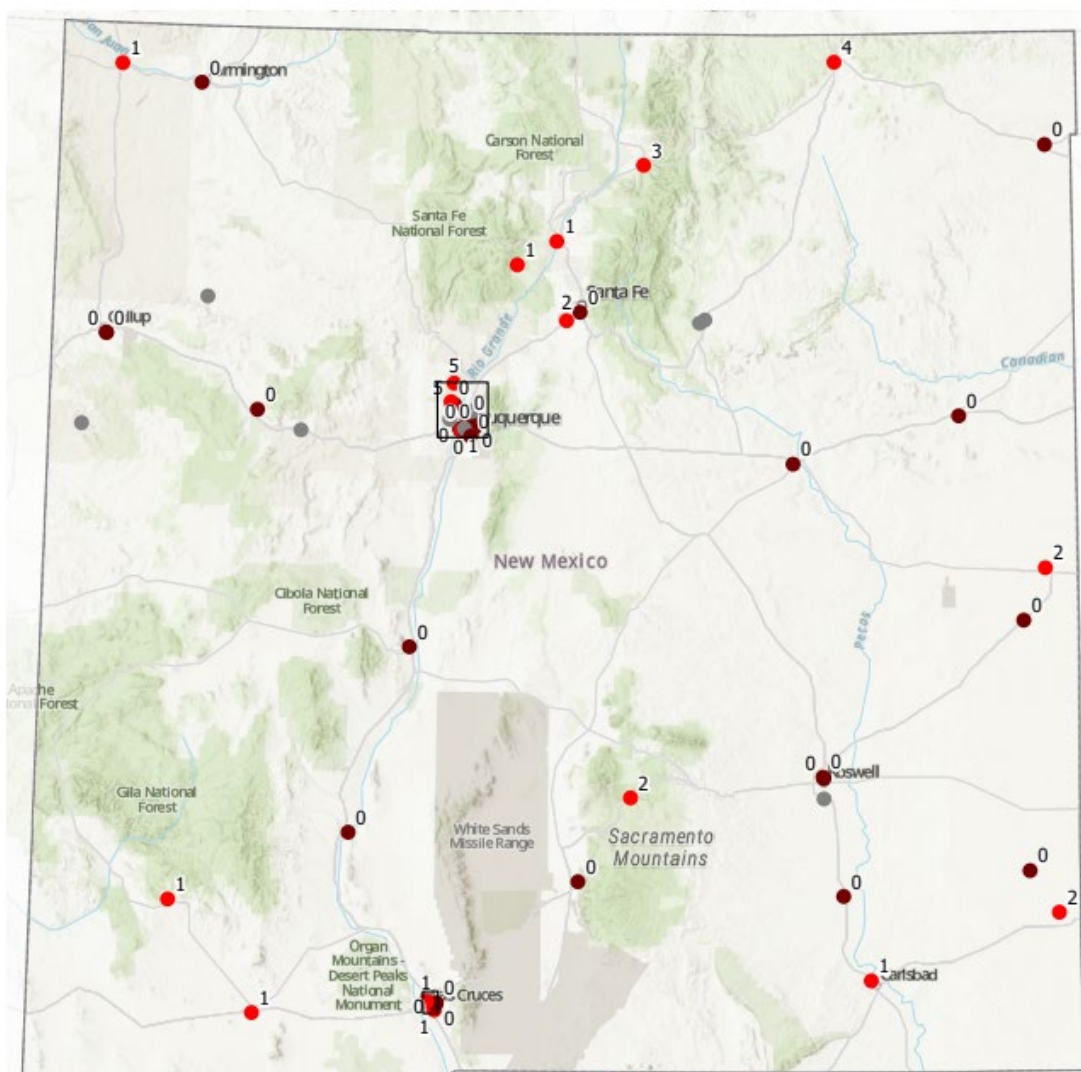
# Dramatic Improvements in Hospital Capacity Evaluation

- NM hospitals are still operating at >100% capacity, particularly in Albuquerque, but availability of ICU and non-ICU beds are increased this week.
- Transfers and triage allocation has eased up into contingency level 2.
- Workforce remains the key issue.

NM Hospital Systems Capacity Self-Evaluation



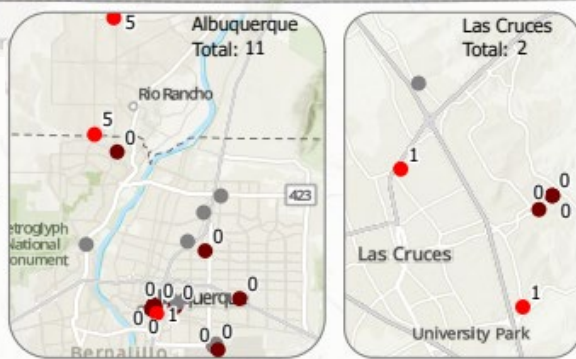
# ICU Beds



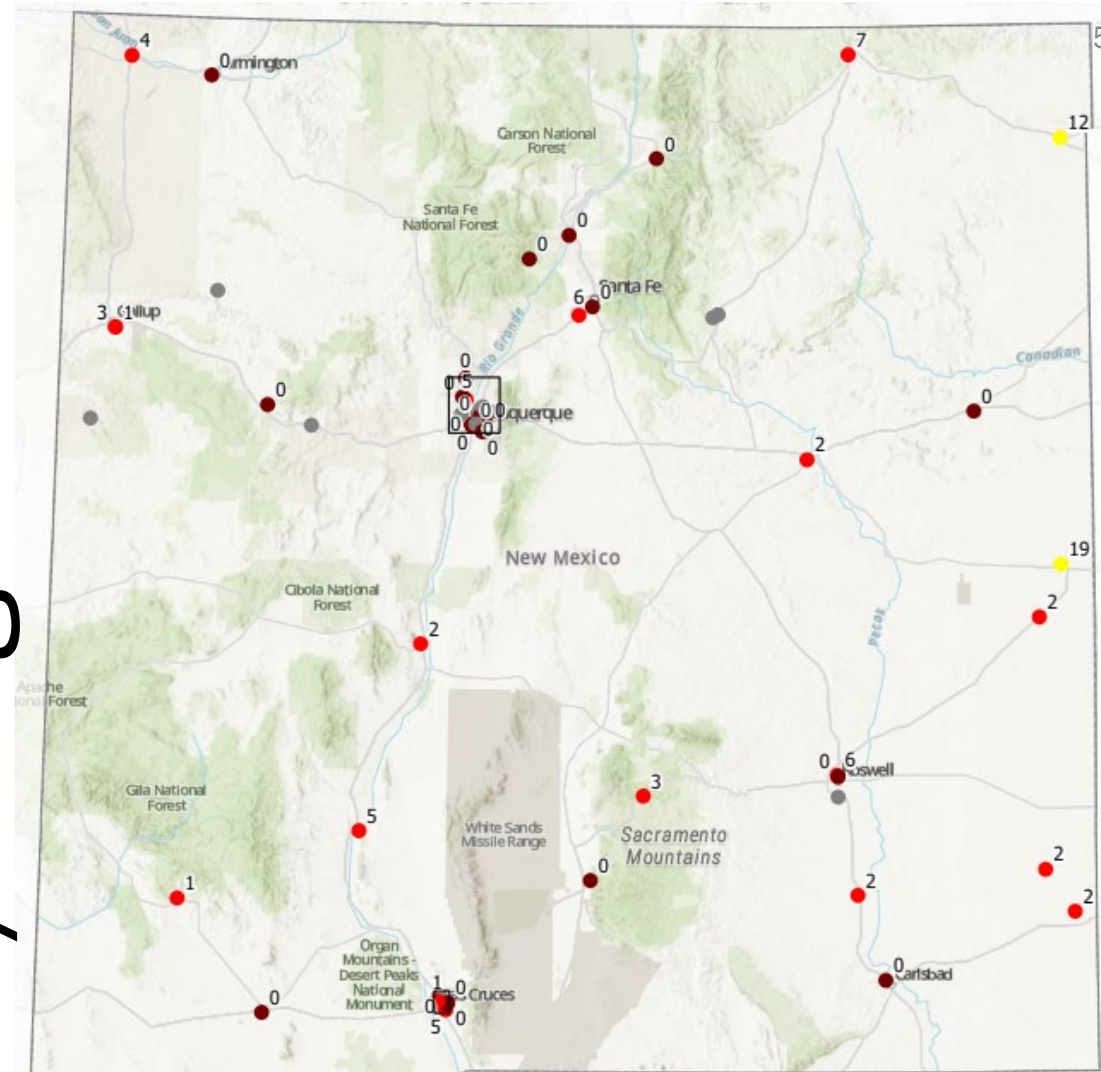
Total beds: 34

February 22, 2022 3:01 PM

Healthcare Region	Totals	Hospital bed availability
Statewide:	34	● No information
ARCH-P Coalition:	11	● > 20 available
Region I Coalition:	12	● 11 - 20 available
Region II Coalition:	4	● 1 - 10 available
Region III Coalition:	7	● 0 or negative



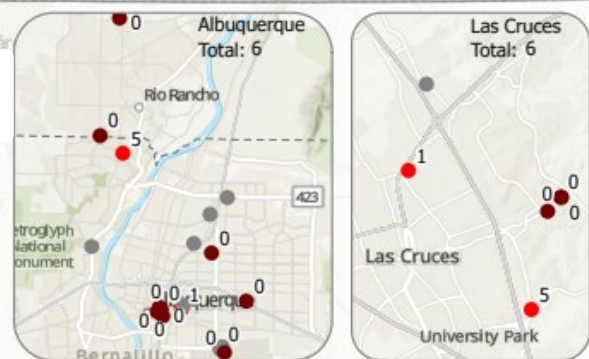
# Med/Surgical Beds



Total beds: 91

February 22, 2022 3:01 PM

Healthcare Region	Totals	Hospital bed availability
Statewide:	91	● No information
ARCH-P Coalition:	6	● > 20 available
Region I Coalition:	21	● 11 - 20 available
Region II Coalition:	14	● 1 - 10 available
Region III Coalition:	50	● 0 or negative



# Masks *still* play an important role in protecting us from COVID-19 and other illnesses.

- Masks are effective in reducing transmission of COVID-19.
  - Healthcare facilities, schools, and other establishments may require masks to enter.
  - If you are immunocompromised or are feeling sick, you will benefit from wearing a mask when around others outside of your home.
  - You may also just feel safer wearing a mask, and that's ok!
- For the best protection, choose a high-quality mask like a KN95 or N95:
    - Make sure your mask fits snugly against your face while still being able to see and breathe easily.
    - Pick a mask with layers to keep your respiratory droplets in and others' out.



Lowest protection

Highest protection

# Who is considered immunocompromised?

<https://cv.nmhealth.org/extra-protection/>

## Immunocompromised individuals include people:

Receiving active chemotherapy or radiation for tumors or blood cancers.

Received an organ transplant and are taking anti-rejection medication.

Received a stem cell transplant within the last two years.

Have a primary immunodeficiency syndrome such as DiGeorge syndrome or Wiskott-Aldrich syndrome.

Have advanced or untreated HIV.

Taking high dose corticosteroids, e.g., more than 20 mg of prednisone each day or medicines like methotrexate for rheumatoid arthritis.

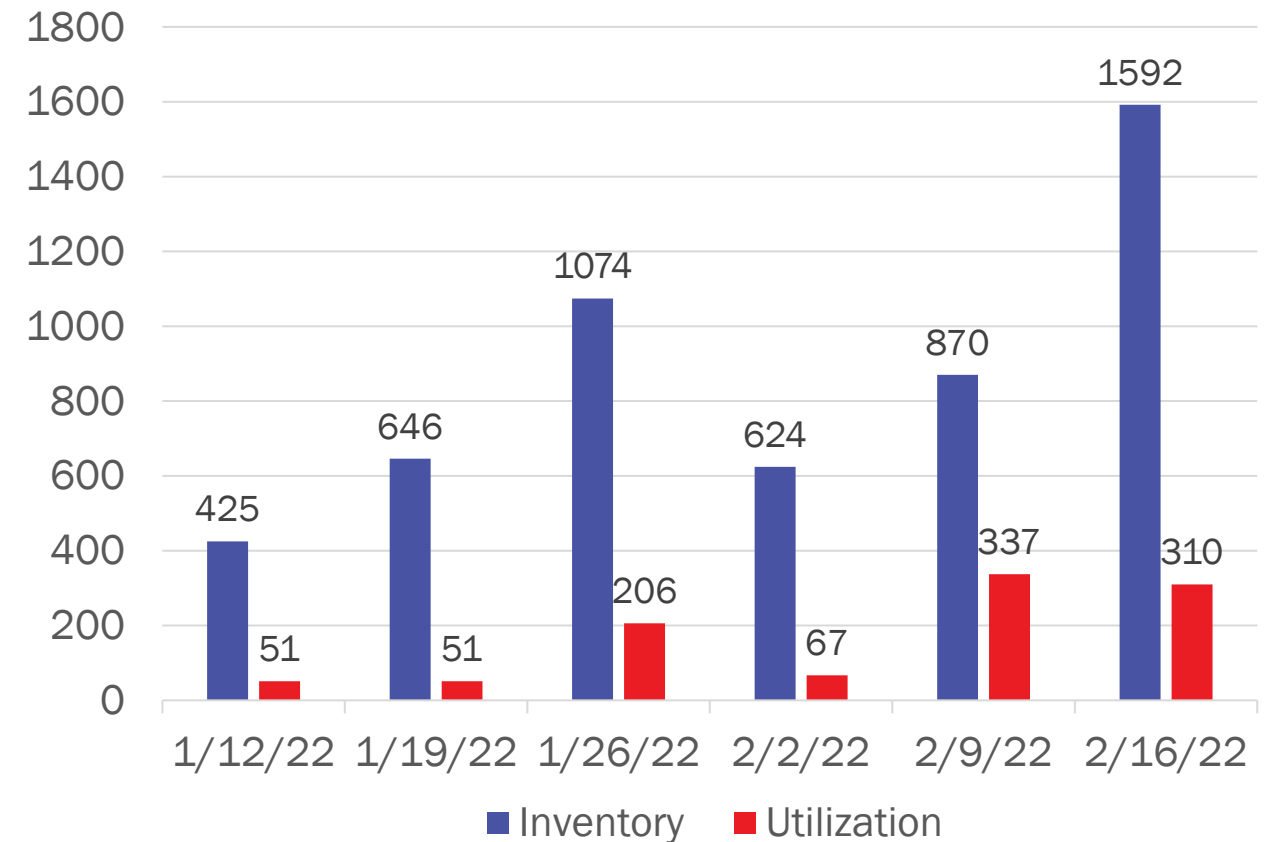
Some other immune-suppressing medications may qualify; individuals should talk to their doctor to confirm treatment and vaccine options.



# Evusheld use can help further protect immunocompromised.

- COVID-19 treatments can offer substitute antibodies to restore, enhance or mimic the immune system's attack on pathogens.
- Evusheld is a new, long-acting monoclonal antibody therapy that is widely available for immunocompromised individuals.
- New Mexico has ample supply of Evusheld for our most vulnerable.

Evusheld Inventory and Utilization by Week





# An additional vaccine dose is recommended for immunocompromised individuals.

- The CDC recommends that moderately to severely immunocompromised individuals receive:
  - A 3-dose, mRNA primary series for people ages 5 years and older who are moderately or severely immunocompromised at the time of vaccination (2-dose J&J primary series is ok for 18+).
  - A single booster dose at least 3 months after the third dose in the primary series, for a total of four doses, preferably with an mRNA COVID-19 vaccine.



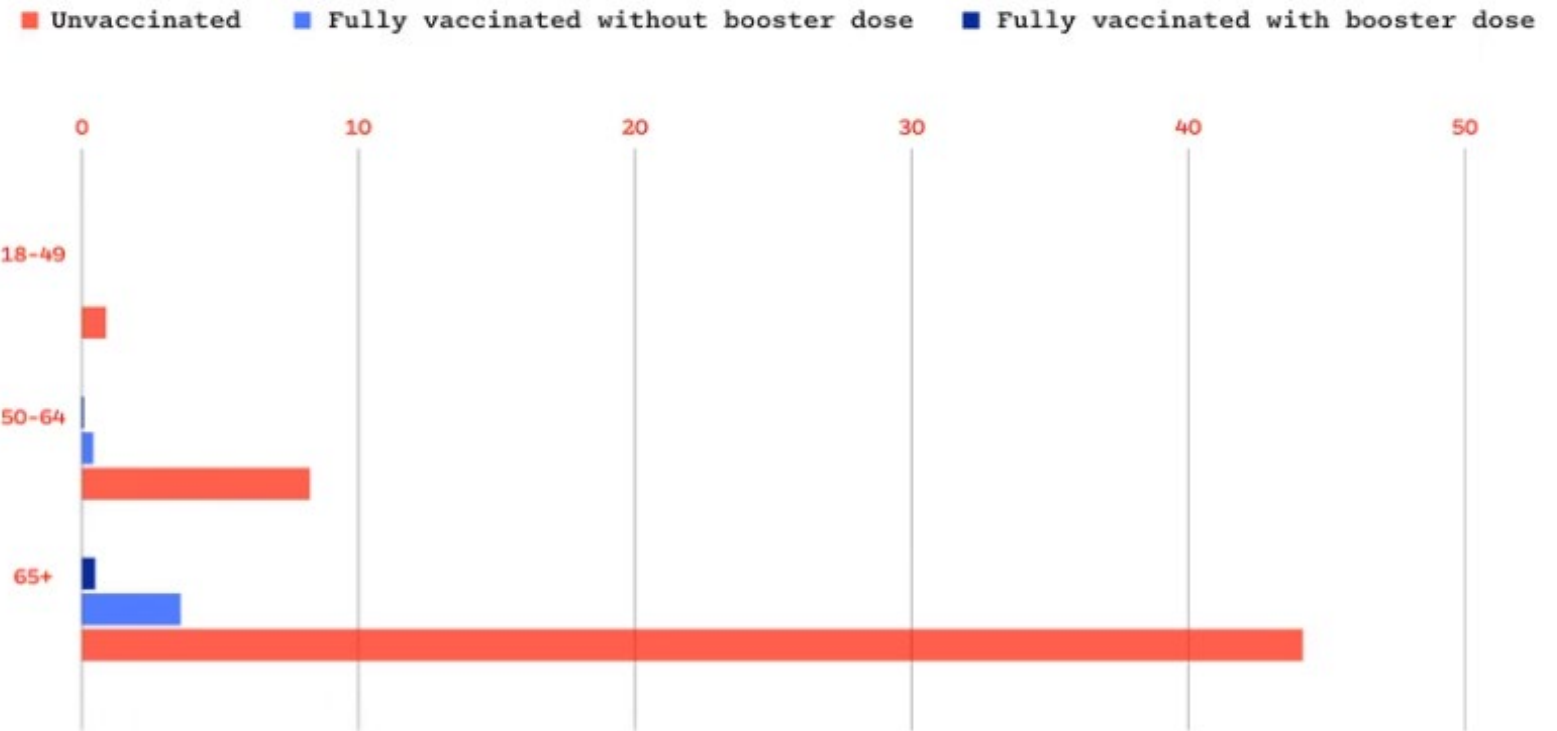
[Interim Clinical Considerations for Use of COVID-19 Vaccines | CDC](#)

*Investing for tomorrow, delivering today.*

# Risk of Severe COVID-19 Goes up with Age

- Compared with someone in their 20s, a person >65 years old is not slightly more likely to die of COVID-19, but *at least 65 times* more likely to die of COVID-19.
- >75, they become 140 times more likely to die. Over age 85, they are 340 times more likely to die.
- In 2022 so far, three-quarters of COVID-19 deaths in America have been in people >65, 93% in people >50 and older.

Rates of COVID-19 Deaths by Vaccination Status and Age Group, per 100,000 people  
November 28th- December 4th 2021



<https://www.theatlantic.com/health/archive/2022/02/vaccinate-old/622080/Risk-for-COVID-19-Infection-Hospitalization-and-Death-By-Age-Group-|CDC>

*Investing for tomorrow, delivering today.*

# Epidemiology Report of the Week

Weekly COVID-19 epidemiology reports are posted at the end of the day on Tuesdays at:

- <https://cv.nmhealth.org/epidemiology-reports/>

Today, we'll walk through the Vaccination Report.

## Weekly Reports

### Case Reports

DOWNLOAD THE LATEST COVID-19 GEOGRAPHIC TRENDS REPORT

DOWNLOAD THE LATEST COVID-19 DEMOGRAPHICS REPORT

DOWNLOAD THE LATEST COVID-19 HEALTH AND SOCIAL CHARACTERISTICS REPORT

### Hospitalization Reports

DOWNLOAD THE LATEST COVID-19 HOSPITALIZATION REPORT

### Mortality Reports

DOWNLOAD THE LATEST COVID-19 MORTALITY REPORT

### Variant of Concern Reports

DOWNLOAD THE LATEST COVID-19 VOC REPORT

### Pediatric Case Report

DOWNLOAD THE LATEST COVID-19 PEDIATRIC CASE REPORT

### Community Transmission by County Report

DOWNLOAD THE COMMUNITY TRANSMISSION BY COUNTY REPORT

### Vaccination Report

DOWNLOAD THE VACCINATION REPORT

Reports from 11/30/2021

# Takeaway Messages

- Hospitals finally seeing the *start of* some relief in volumes, but many still are > 100% capacity, please respect requirements to wear a mask.
- Do not stigmatize mask use (wear a mask if it makes you feel more comfortable)!
- Visit [FindaTestNM.org](https://FindaTestNM.org) to locate a COVID-19 test.
- We are all at risk of COVID-19; Stay up to date on your vaccine at [VaccineNM.org](https://VaccineNM.org).
- Be kind in your discussions with others about learning to live with COVID-19 in your community.



Ricardo Caté is from Santo Domingo Pueblo and is the only Native American cartoonist whose work is carried by a daily mainstream newspaper.