

COVID-19 Day 519 Press Update

August 11, 2021

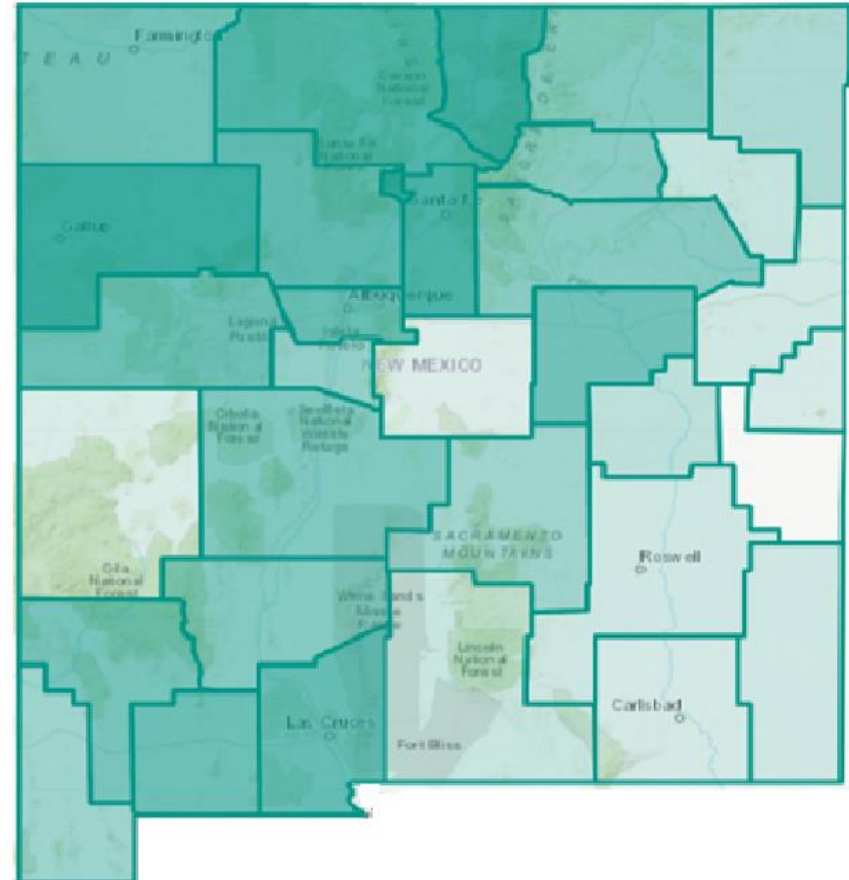
DOH & HSD Secretary David R. Scrase, M.D.

DOH State Epidemiologist Christine Ross, M.D., MPH

New Mexico vaccination rates

- **74.2%** of New Mexicans (18+) have received at least a first shot
- **65.5%** of New Mexicans (18+) are fully vaccinated
- **11 counties** are still less than **50% fully vaccinated (18+)**

Percent of New Mexico Residents 18+ with Vaccination Series Completed



Source: <https://vaccinenm.org/public-dashboard.html>

Vaccinations among young people

- **53.0%** of New Mexicans (12-17) have received at least a first shot
- **40.8%** of New Mexicans (12-17) are fully vaccinated
- **The lowest percentage of fully vaccinated New Mexicans over age 15 is among 18–24-year-olds**

Age Group	Population	Fully Vaccinated 8/10/21	Percent of Population Fully Vaccinated 8/10/21	Increase in Percent of Population Fully Vaccinated Since 7/27/21
12-15 years	111,516	37,651	33.8%	3.8%
16-17 years	55,318	24,318	44.0%	2.4%
18-24 years	196,553	82,771	42.1%	1.4%
25-39 years	420,690	206,976	49.2%	1.2%
40-64 years	629,370	409,075	65.0%	1.1%
65+ years	378,676	285,136	75.3%	0.7%

Universities lead COVID-19 vaccine push for young New Mexicans

Colleges and universities statewide are instituting vaccine mandates or strongly encouraging students, faculty, and staff to be vaccinated before returning to campus.

“We are about to put 20,000 people in a blender and some of them are not going to be vaccinated without this policy,” University of New Mexico regent William Payne recently said. He joined a unanimous vote by the university system’s board of regents approving vaccination mandate.

AP News, 8/9/21



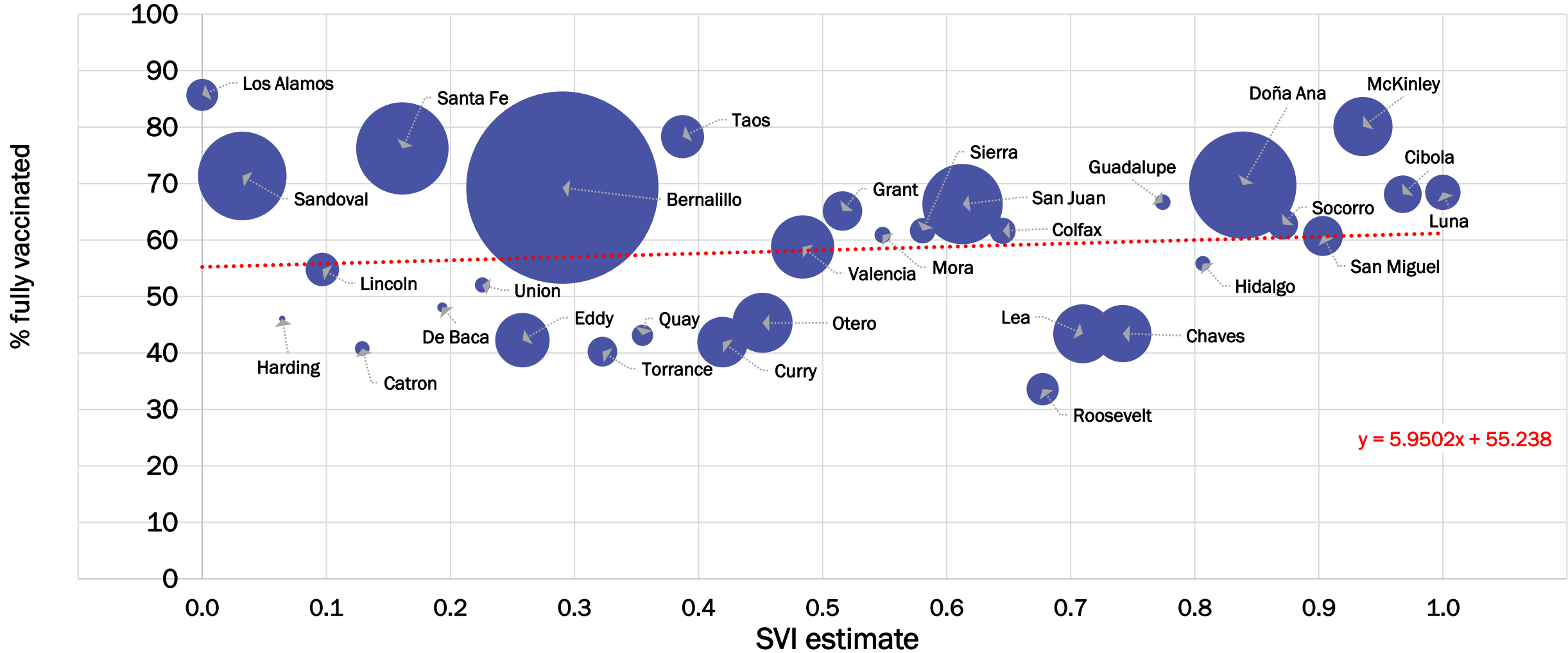
Aggie Health and Wellness Nurse administering vaccine at the Corbett Center Student Union, NMSU
Josh Bachman/NMSU via AP

Source: <https://apnews.com/article/health-education-coronavirus-pandemic-cbd01b4b13408afd7fd0336a835eb498>

Investing for tomorrow, delivering today.

1190 S. St. Francis Drive • Santa Fe, NM 87505 • Phone: 505-827-2613 • Fax: 505-827-2530 • nmhealth.org

New Mexico is vaccinating our most vulnerable counties!



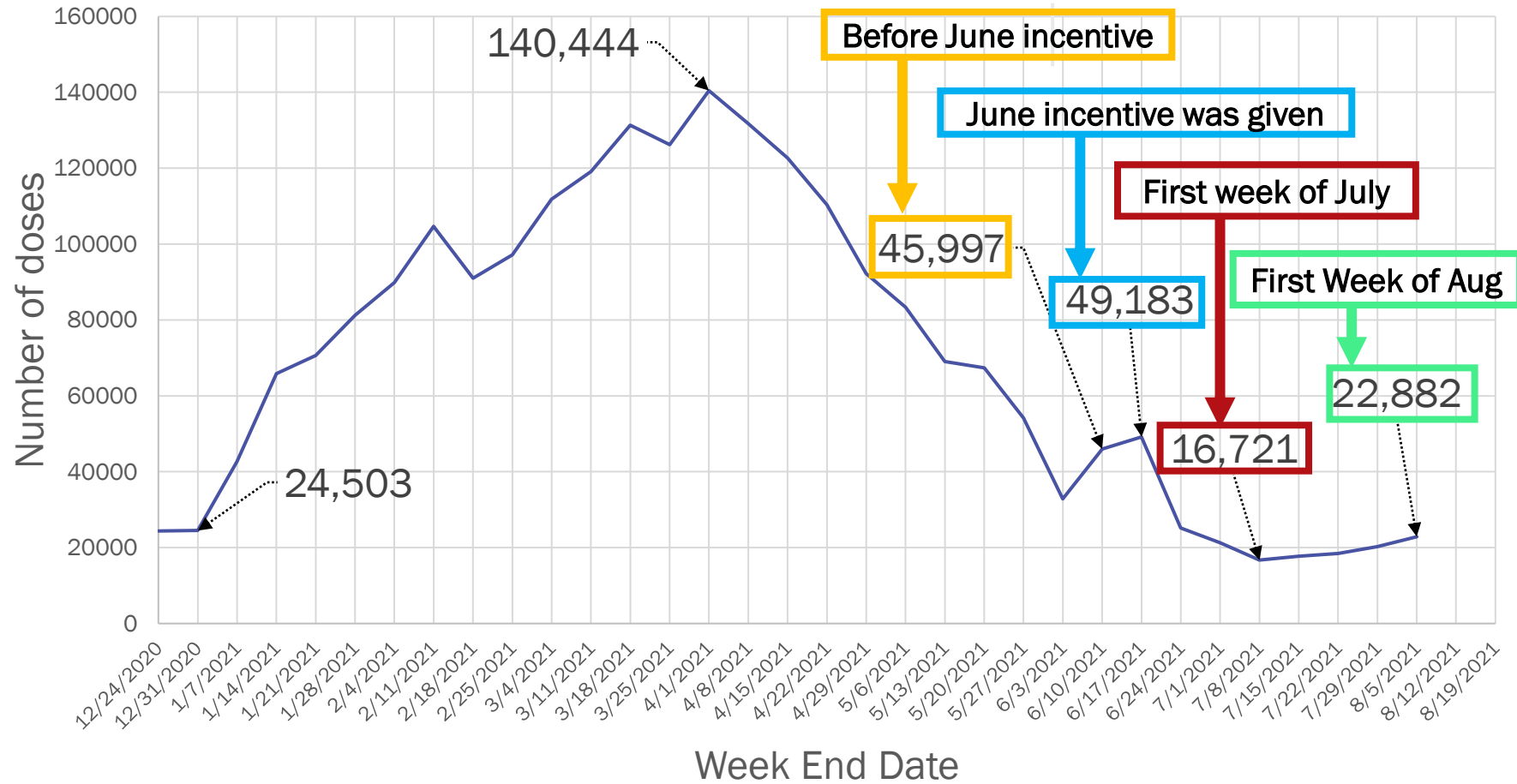
\$100 Vaccine Incentives

New Mexico's \$100 Vaccine Incentive is working!

New Mexico administered 6,161 more doses during the first week of August than the first week of July.

Get any dose of the COVID-19 vaccine and receive \$100 through the month of August.

Total COVID-19 Vaccine Doses by Week



Source: NMSISS and Tiberius

Investing for tomorrow, delivering today.

1190 S. St. Francis Drive • Santa Fe, NM 87505 • Phone: 505-827-2613 • Fax: 505-827-2530 • nmhealth.org



New Mexico COVID-19 Case Update

Most U.S. states and jurisdictions are experiencing substantial or high levels of community transmission fueled by the spread of the highly contagious B.1.617.2 (Delta) variant

United States Levels of Community Transmission

United States Level of Community Transmission HIGH
7 Day Case Rate per 100,000 232.1
7 Day Percent Positivity Rate 10.21%

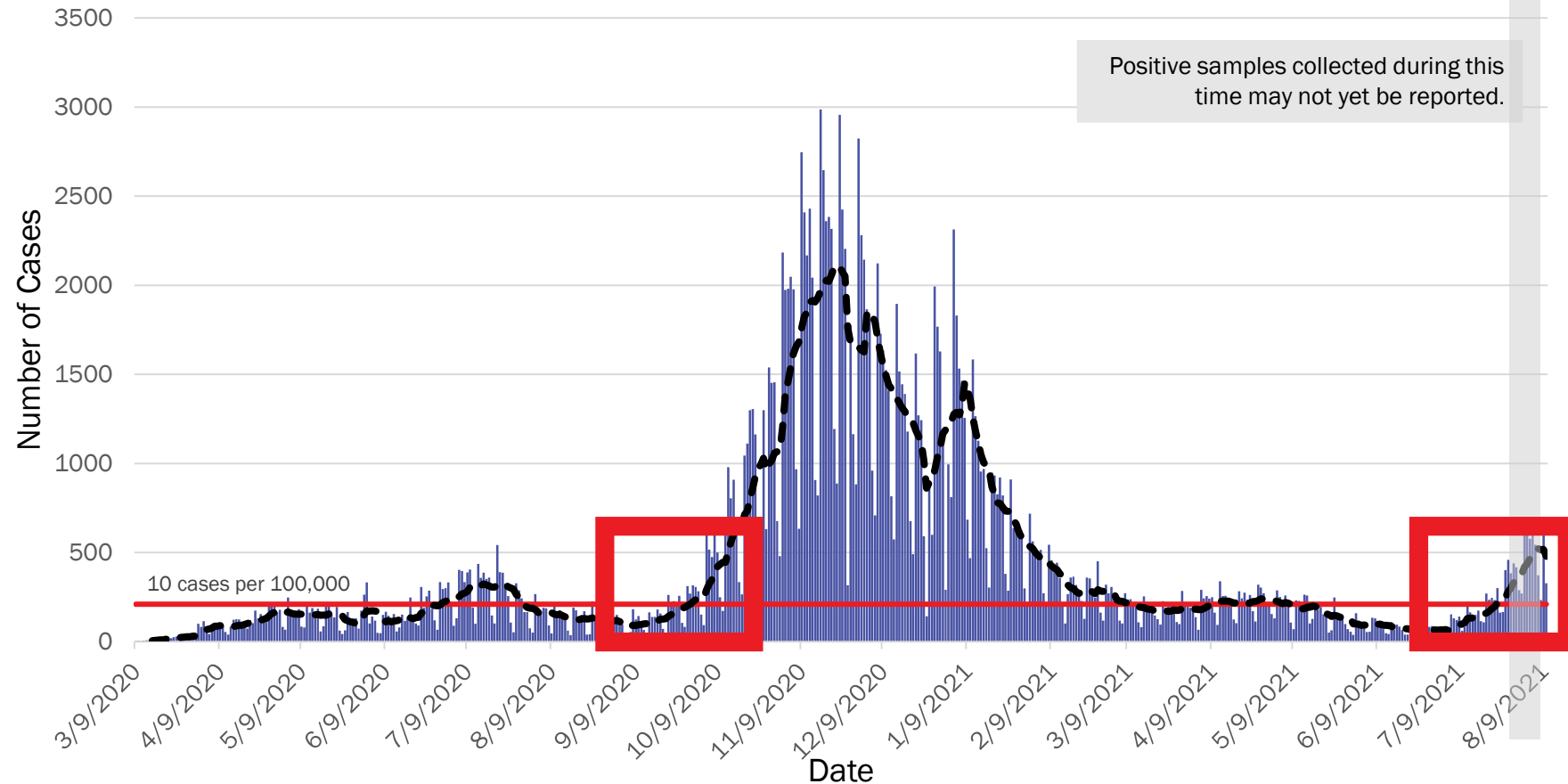


COVID-19 Case Counts are Trending Up

Statewide, daily case counts are increasing in New Mexico.

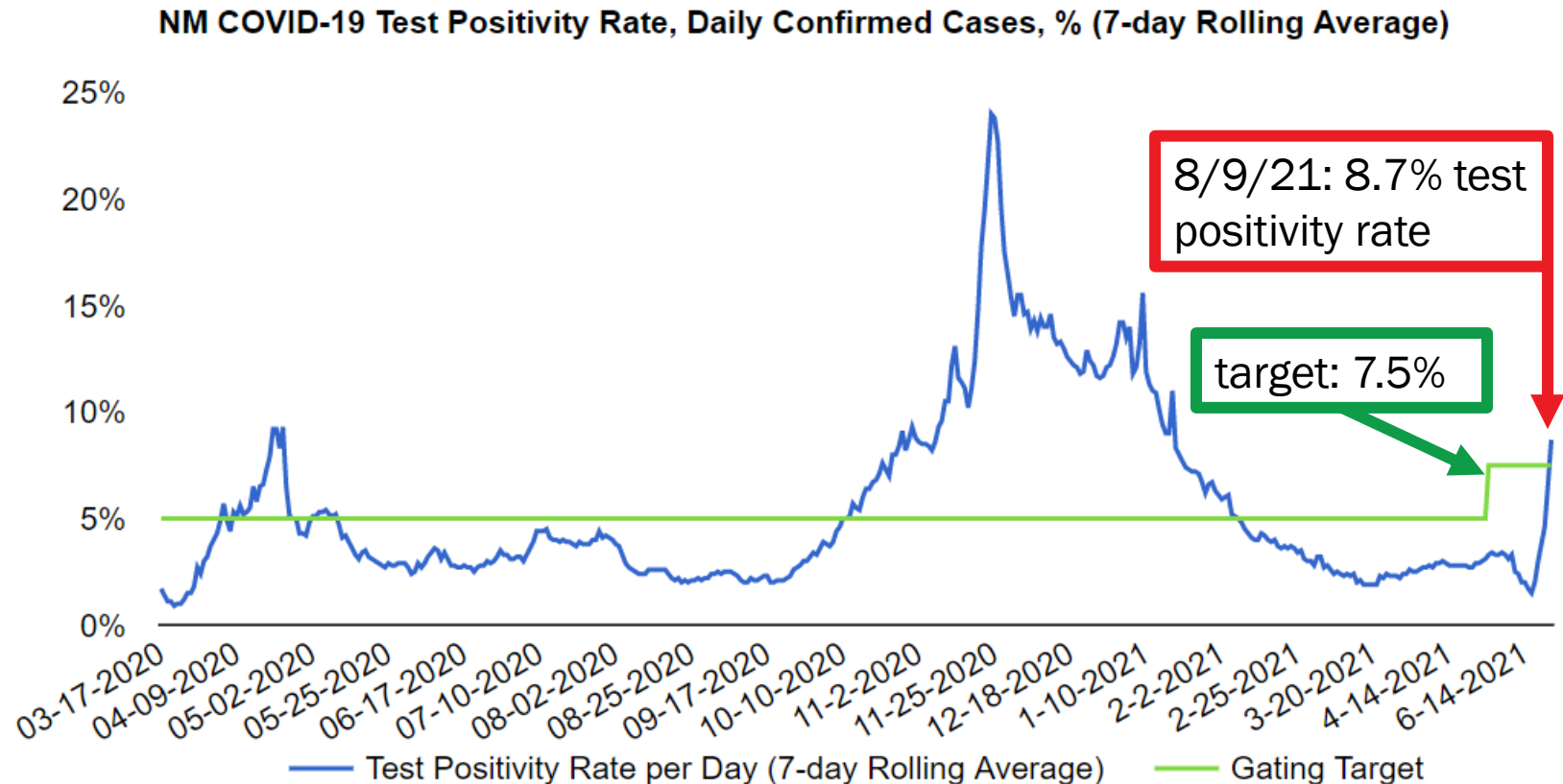
Case counts this week are 10 times higher than the first week in July.

New Mexico COVID-19 Cases by Date of Specimen Collection
August 11, 2021



NM COVID-19 Test Positivity Rate Rapidly Increasing

- NM statewide test positivity rate 2.5% on July 8.
- Increased to 8.7% by August 9, which is 1.2% above gating target of 7.5%.



Get tested for COVID-19 if...

...you have COVID-19 symptoms

cough, fever, shortness of breath, chills, repeated shaking with chills, muscle pain, headache, sore throat, congestion or runny nose, nausea or vomiting, diarrhea, and/or loss of taste or smell

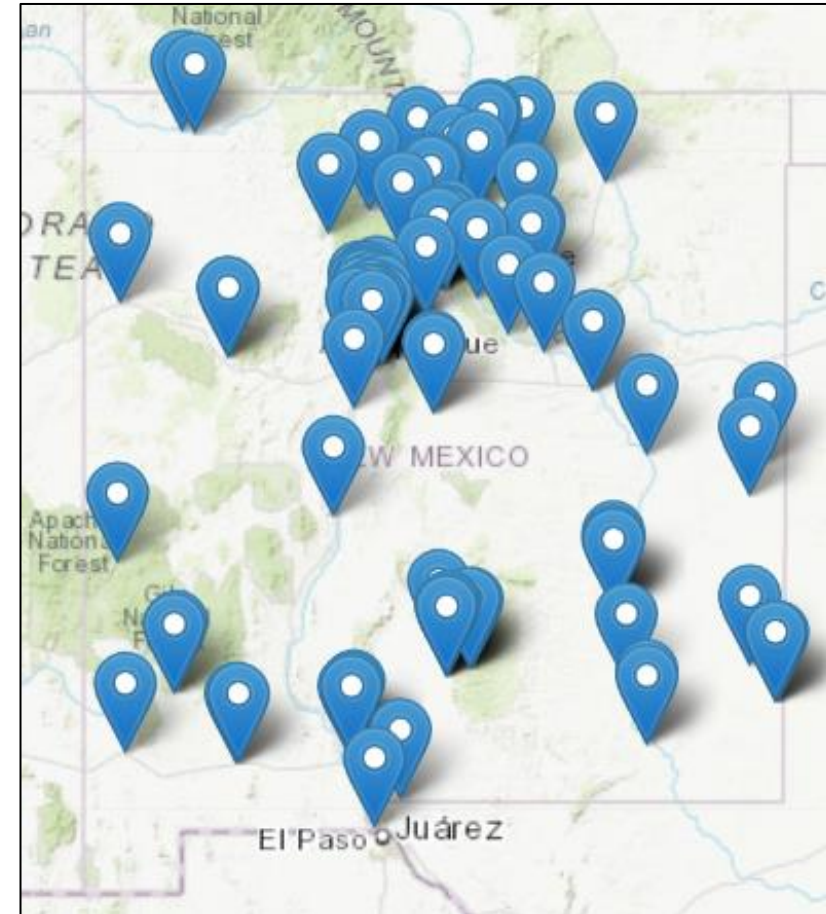
...you don't have symptoms but were in **close contact** or are a household member of someone who has tested positive and are in their infectious period, regardless of vaccination status

...you don't have symptoms but are **unvaccinated and live or work in a high-risk congregate setting** such as long-term care facilities, detention centers and correctional facilities

...you are a patient scheduled for **surgery or hospital admission, even if you're fully vaccinated**. Some medical facilities may require testing prior to surgery or admission.

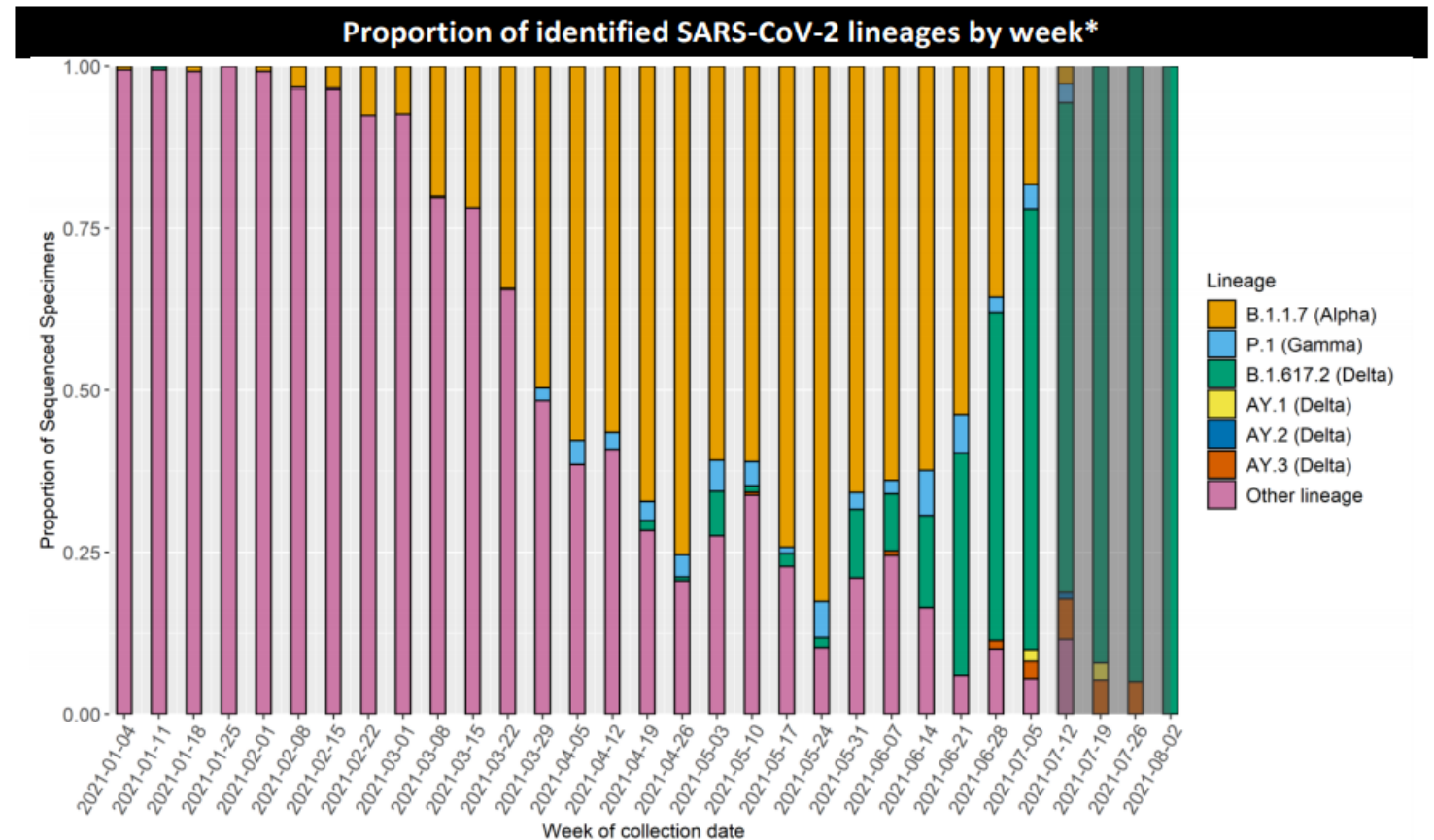
Get Tested for COVID-19!

- COVID-19 testing is available at no cost to New Mexicans
- Find a test site near you: findatestnm.org
- Order an at-home, mail-in COVID-19 test through Vault: <https://learn.vaulthealth.com/nm/>



SARS-CoV-2 Variants in New Mexico

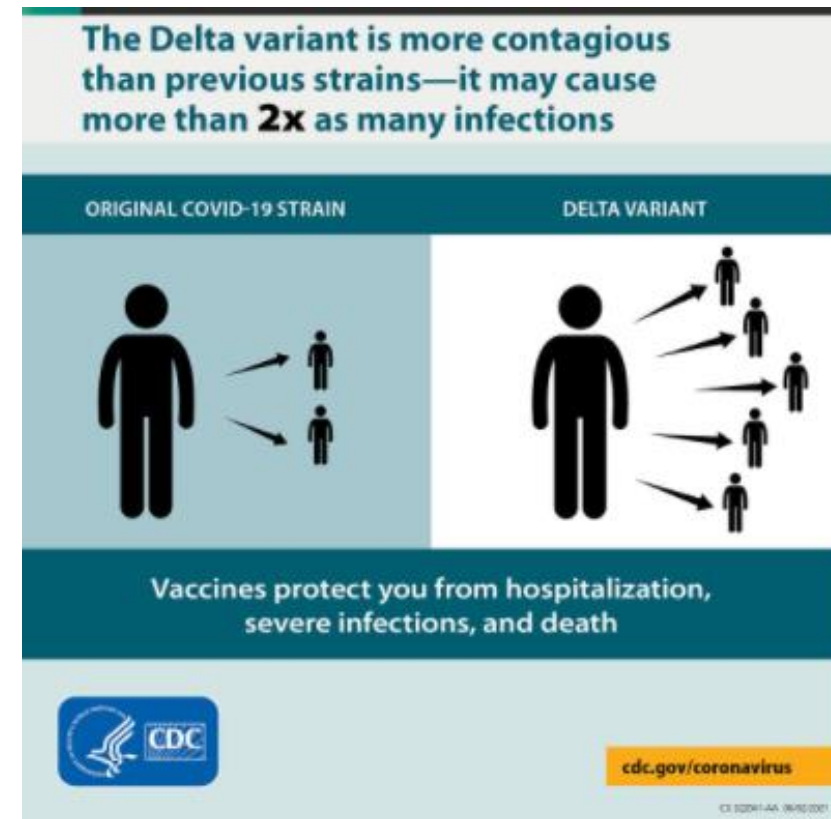
- COVID-19 cases sequenced, virtually all Delta
- Variant diversity wiped out
- Exponential rise in rate of Delta replacement of other variants
- **Stop transmission and stop opportunities for further viral mutations – GET VACCINATED**



*The dark grey shaded region in each of the figures on this page represents the lag period between specimen collection and genomic sequencing results such that the results may look different when all specimens available for sequencing have been reported.

What do you need to know about the COVID-19 Delta variant...

- The Delta variant is highly contagious
- The Delta variant might cause more severe illness than previous strains in unvaccinated persons
- Unvaccinated people remain the greatest concern although fully vaccinated persons with Delta variant breakthrough infections can spread the virus to others
- Vaccines remain effective against this variant



Delta caused higher rates of hospitalizations and deaths in Ontario study

- Study of people in Ontario, Canada testing positive for COVID-19 and screened for Variants of Concerns (VOCs) between 2/7/21 and 6/22/21 (n=211,197).
 - VOC with N501Y mutation (Alpha/B.1.1.7, Beta/B.1.351 and Gamma/P.1 variants)
- Compared to non-VOCs, adjusted elevation in risk associated with Delta more pronounced: 120% for hospitalization; 287% for ICU admission; and 137% for death.
- Individuals infected with VOCs, on average, younger and less likely to have comorbid conditions than those infected with non-VOCs, but nonetheless had higher risks of hospitalization and ICU admission.

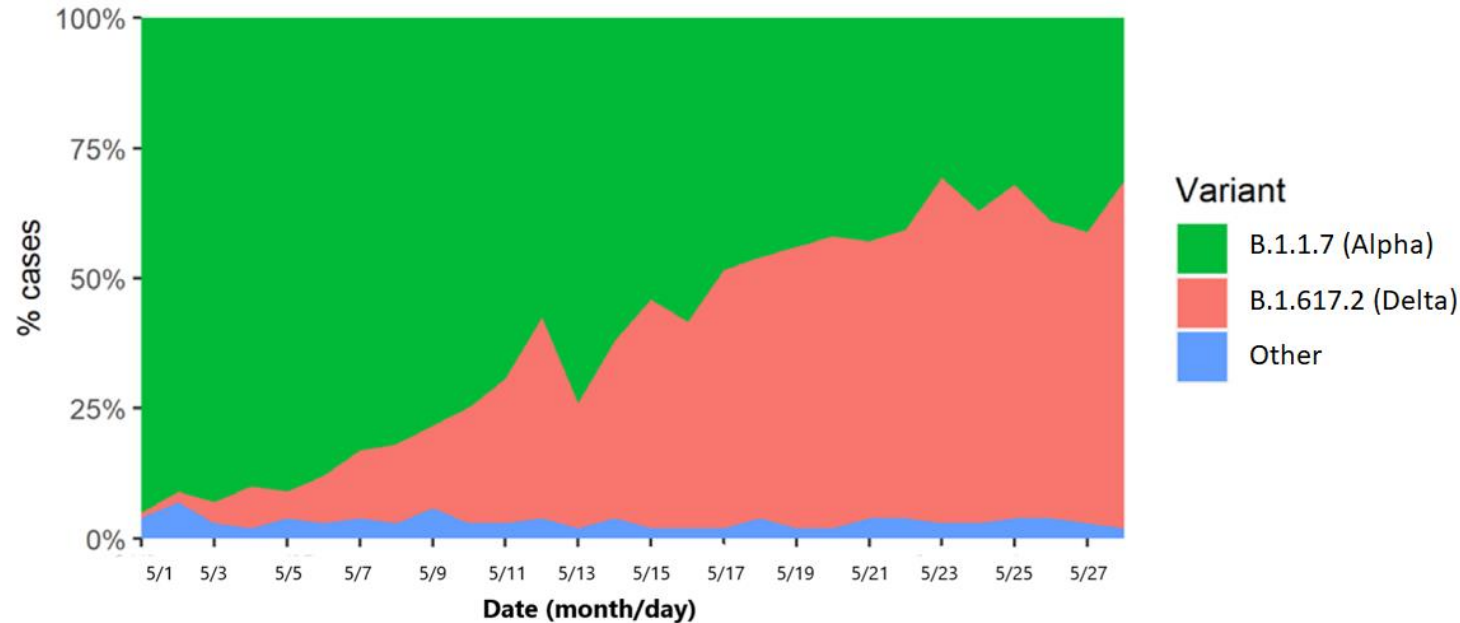
Relative increase in odds ratio for hospitalization, ICU admission and death with Delta VOC compared to N501Y VOCs.

Outcome	Effect of Delta vs. N501Y+ VOC		
	OR	LCL	UCL
Hospitalization	1.55	1.45	1.63
ICU Admission	2.01	1.79	2.24
Death	1.59	1.39	1.84

Additional model covariates included: sex, age, comorbidity, pregnancy, series week, and health unit.

Delta caused 85% higher hospitalization rate in one Scotland study

- In May 2021, Delta variant became dominant SARS-CoV-2 strain in Scotland.
- Delta made up 97% of S-gene positive cases, which comprises 40% (7,723/19,543) of all cases and 36% (134/377) of hospitalizations.
- These cases associated with increased hospitalization risk (aHR 1.85, 95%) compared to S-gene negative cases.
- Both BNT1682b (Pfizer/BioNTech) and ChAdOx1 (Oxford/AstraZeneca) vaccines effective in preventing hospitalization.



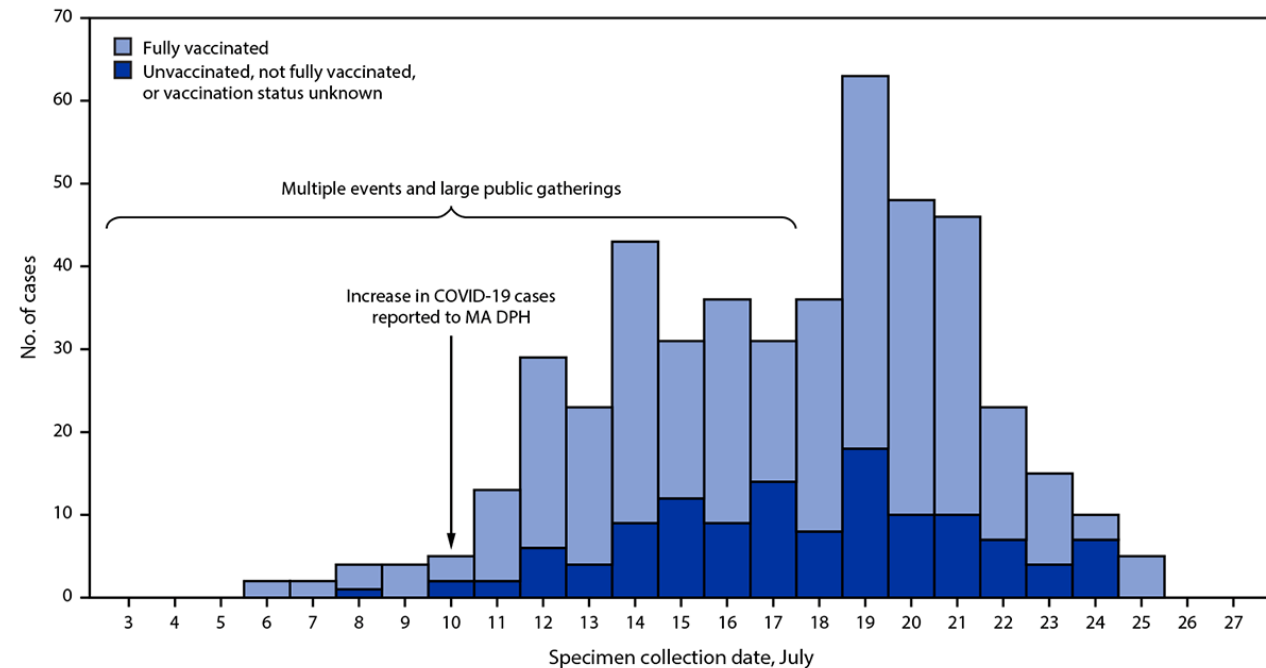
Note: Changing proportions of infections due to SARS-CoV-2 **B.1.1.7 (Alpha)**, **B.1.617.2 (Delta)**, and **other variant** viruses in Scotland over time. All dates are from 2021.

Source: [https://www.thelancet.com/journals/lancet/article/PIIS0140-6736\(21\)01358-1/fulltext?utm_campaign=lancetcovid21&utm_source=twitter&utm_medium=social](https://www.thelancet.com/journals/lancet/article/PIIS0140-6736(21)01358-1/fulltext?utm_campaign=lancetcovid21&utm_source=twitter&utm_medium=social)

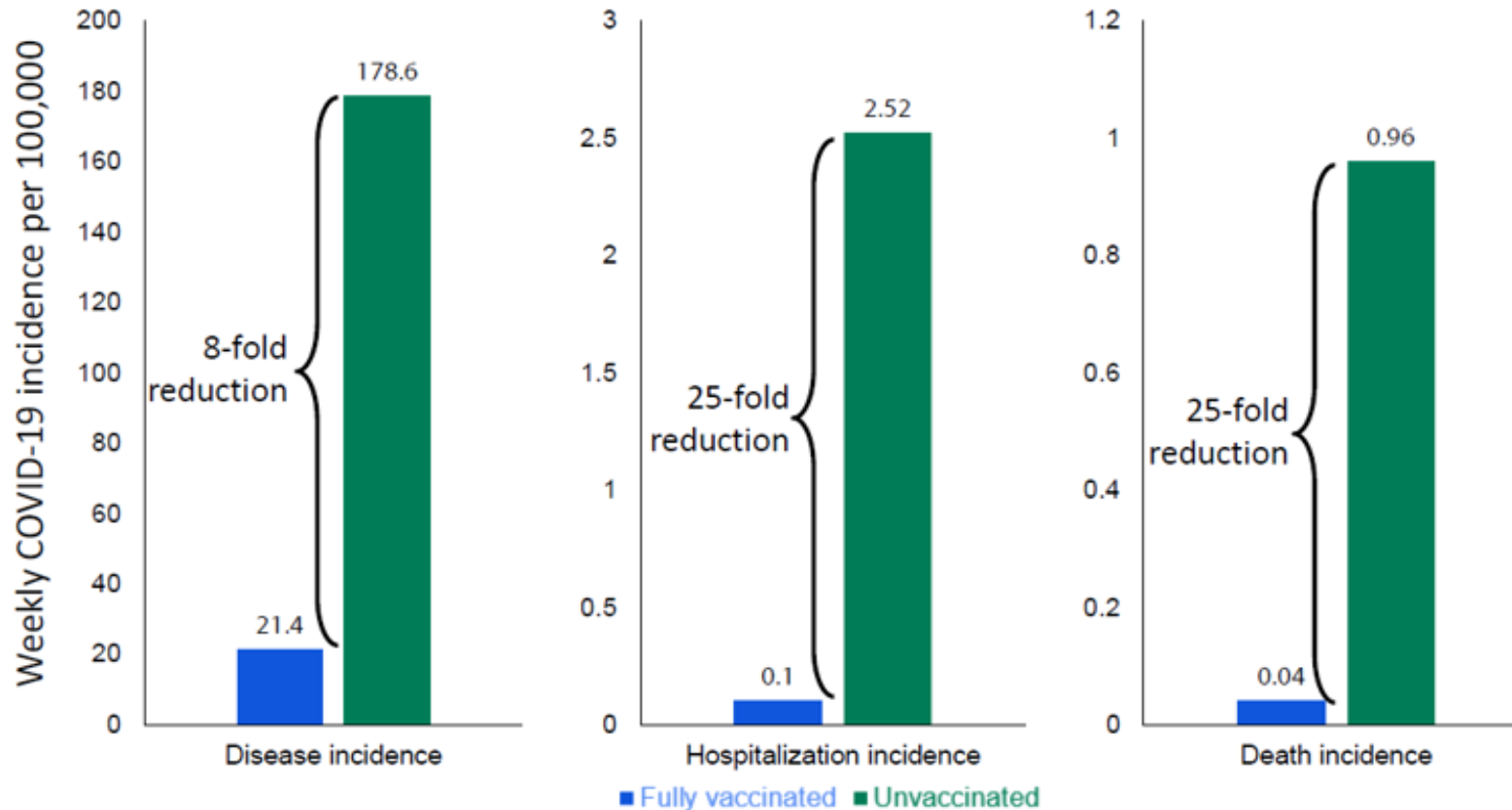
Outbreak of SARS-CoV-2 Infections, Including Vaccine Breakthrough Infections, Associated with Large Public Gatherings – Barnstable County, MA, July 2021 CDC

- On July 3, 14-day average COVID-19 incidence of 0 cases per 100,000 persons per day in Barnstable County; by July 17, increased to 177 cases per 100,000.
- Following multiple large public events, 469 COVID-19 cases identified among MA residents who traveled to Barnstable during July 3–17.
 - 346 cases (74%) occurred in fully vaccinated persons.
 - 274 (79%) vaccinated patients with breakthrough infection symptomatic.
 - Among persons with breakthrough infection, 4 (1.2%) hospitalized, and no deaths reported.
 - Delta in 90% of specimens from 133 patients.

SARS-CoV-2 infections associated with large public gatherings, by date of specimen collection and vaccination status, Barnstable County, MA, July 2021



Greater risk of disease, hospitalization and death among unvaccinated vs vaccinated people: National Estimates



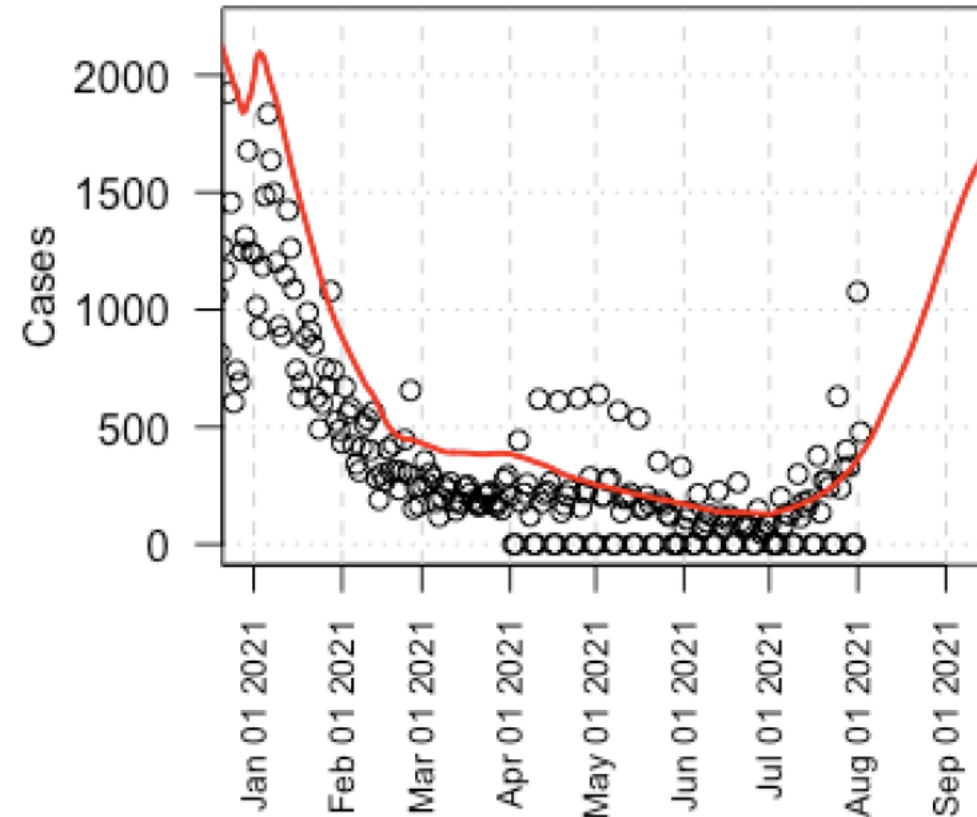
At current incidence, 35,000 symptomatic infections per week among 162 million vaccinated Americans

Data from COVID Tracker as of July 24, 2021. Average incidence 100 cases per 100,000 persons per week. Vaccine effectiveness against symptomatic illness = 88% (Lopez Bernal et al. [NEJM 2021](#)), where risk is $[1 - VE]$ or 12%. Vaccine effectiveness hospitalization (or death) = 96% (Stowe et al. [PHE preprint](#)), where risk is $[1 - VE]$ or 4%. Rate in unvaccinated = Community rate / $[(1 - \text{fully vaccinated coverage}) + (1 - VE) * \text{fully vaccinated coverage}]$. Rate in fully vaccinated = $(1 - VE) * \text{Rate in unvaccinated}$. Fully vaccinated coverage proportions were from COVID Data Tracker as of July 24, 2021 (50% for US,).

Where are we going?

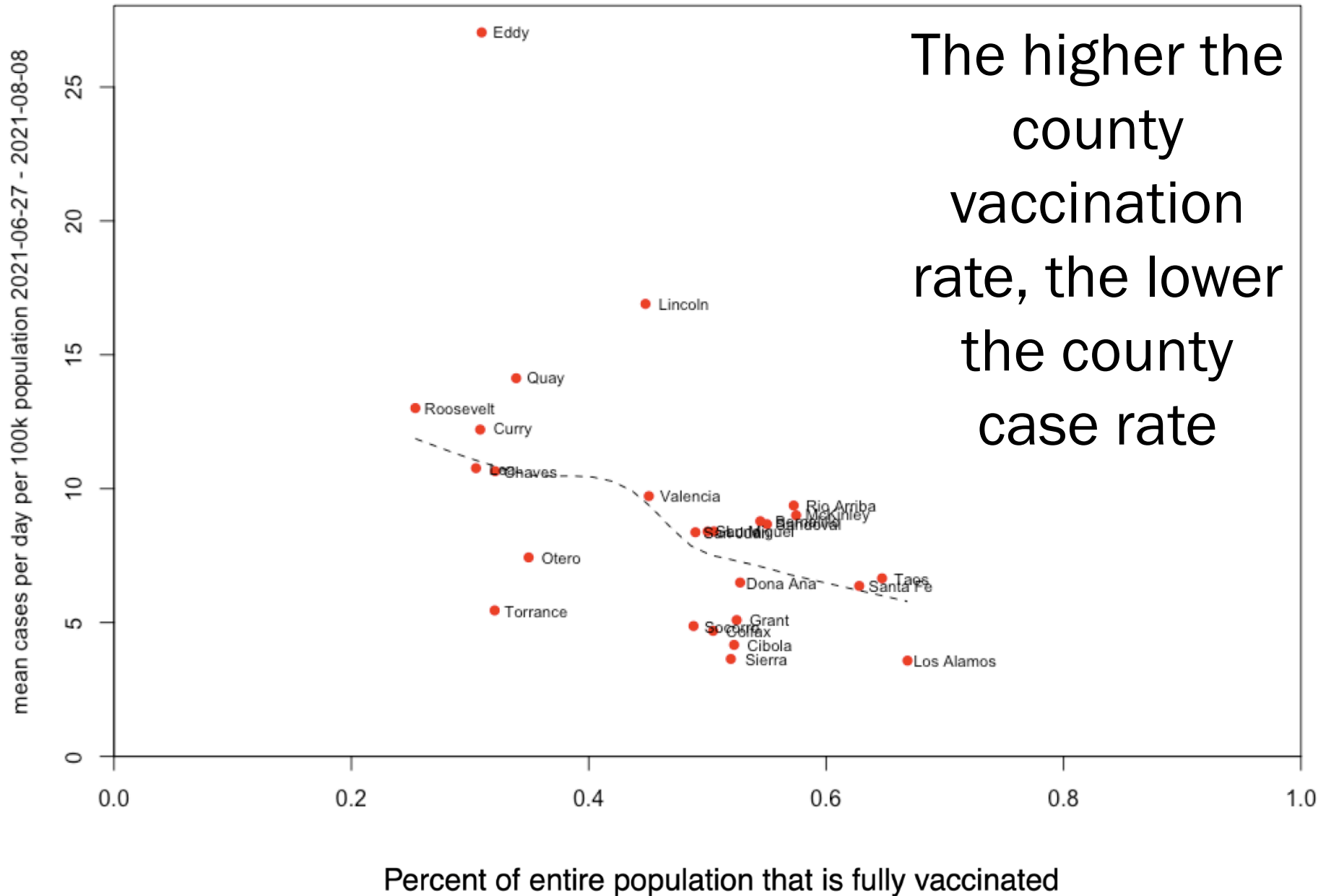
- LANL Modeling 8/9/2021 projection for late August/early September:
 - 900-1500 cases per day
 - 2-6 deaths per day
- We are currently tracking along the “worst case scenario” in our modeling

United States__New Mexico



Source: Los Alamos National Labs 8/9/21 Modeling Update: https://cvmodeling.nmhealth.org/wp-content/uploads/sites/4/2021/08/FinalLANLModelingSlides_8_9_2021MAT.pdf

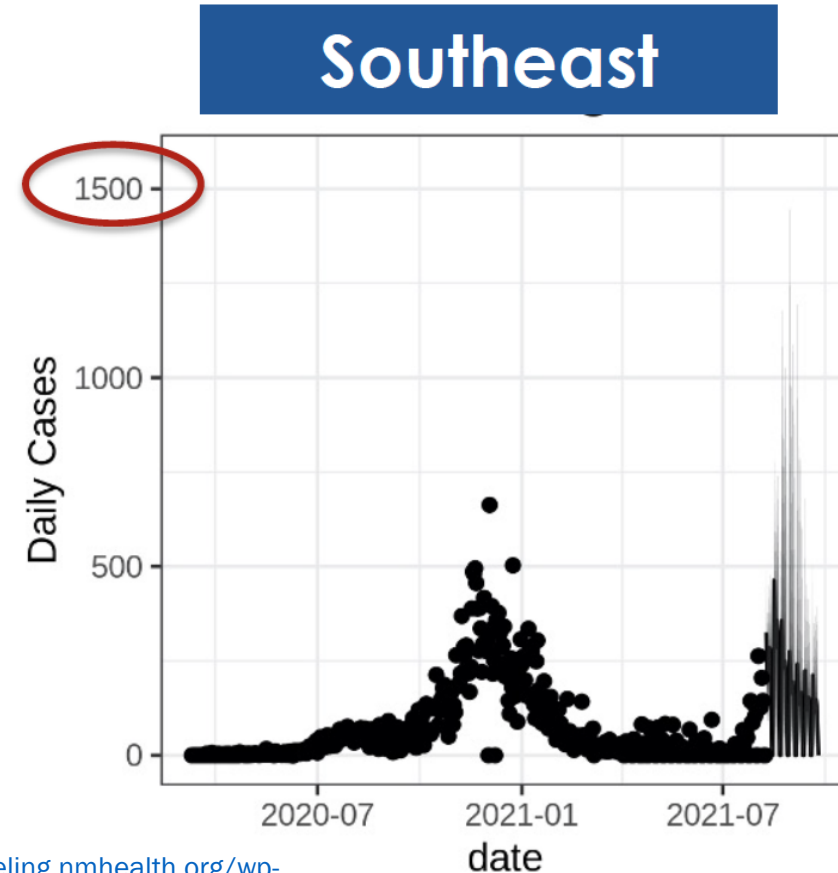
Cases plotted versus vaccination by county



Source: Los Alamos National Labs 8/9/21
Modeling Update: https://cvmodeling.nmhealth.org/wp-content/uploads/sites/4/2021/08/FinalLANLModelingSlides_8_9_2021MAT.pdf

Serious Problems in SE New Mexico

- LANL model is projecting highest SE NM case rates of entire pandemic, up to 1250 per day
- SE NM fully vaccinated rate = 39.8%, lowest NM region
- Regional hub hospital in the SE is seeing increased transfer rates

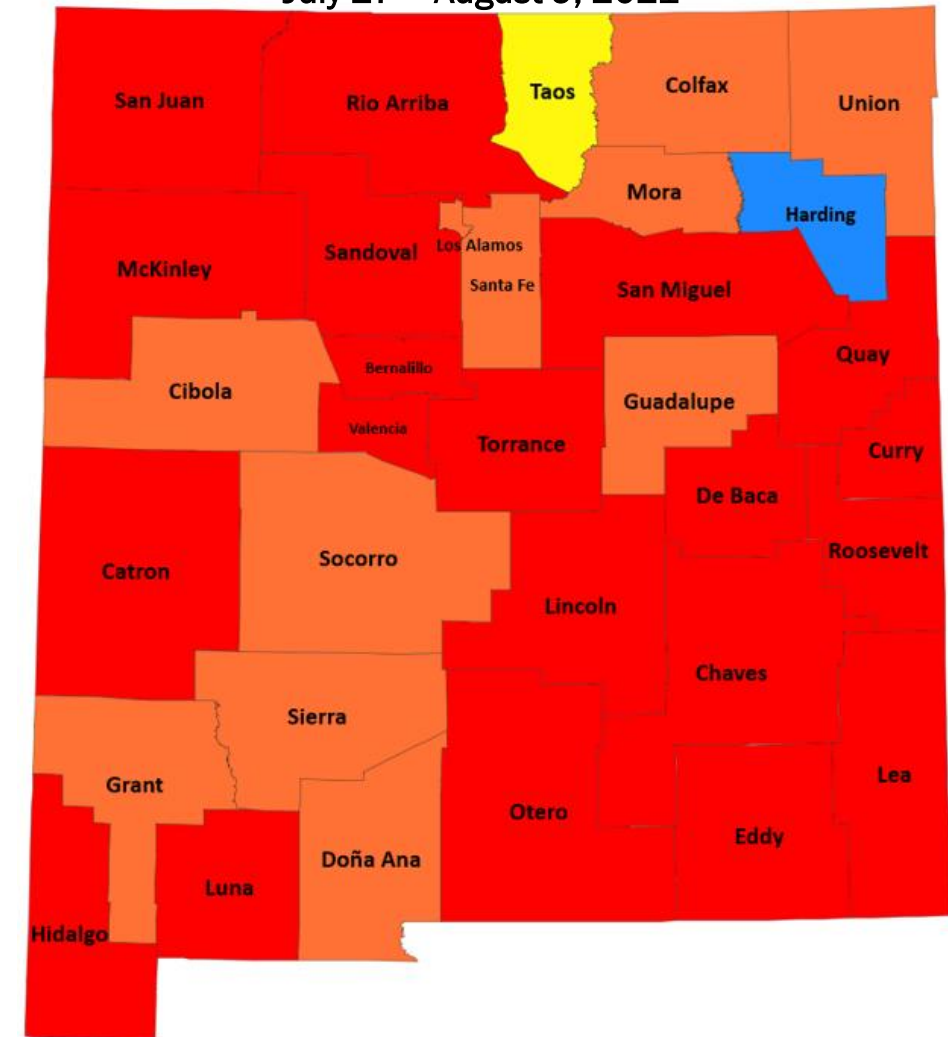


Source: Los Alamos National Labs 8/9/21 Modeling Update: https://cvmodeling.nmhealth.org/wp-content/uploads/sites/4/2021/08/FinalLANLModelingSlides_8_9_2021MAT.pdf

CDC Masking Guidance for Fully Vaccinated

Fully vaccinated people should wear a mask indoors in public under the following circumstances:

- You are in an area of substantial-orange or high-red transmission (98.4% of New Mexicans);
- You or someone in your household has a weakened immune system, is at increased risk for severe disease, or is unvaccinated; or
- You are a teacher, staff, student, or visitor of a K-12 school.



Indicator	Low	Moderate	Substantial	High
Total new cases per 100,000 persons/day	0-1.42	1.43-7.13	7.14-14.28	≥14.29
% of positive tests during the past 14 days	0-4.99%	5-7.99%	8-9.99%	≥10.0%
If the two indicators suggest different transmission levels, the higher level is selected				

Better masking means lower risk

- CDC conducted experiments to assess 2 ways of improving fit of medical procedure masks:
 - fitting cloth mask over medical procedure mask and
 - knotting ear loops of medical procedure mask and then tucking in and flattening extra material close to the face.
 - **Each modification substantially improved source control and reduced wearer exposure.**
- Cloth mask covering medical procedure mask (double mask) blocked 85.4% of cough particles; knotted and tucked medical procedure mask blocked 77.0%.
- **Source and receiver both fitted with double masks or knotted and tucked masks, cumulative exposure of receiver reduced 96.4% and 95.9%, respectively.**

Wearing a mask that fits tightly to your face can help limit spread of the virus that causes COVID-19

In lab tests with dummies, exposure to potentially infectious aerosols decreased by **about 95%** when they both wore tightly fitted masks

Other effective options to improve fit include:

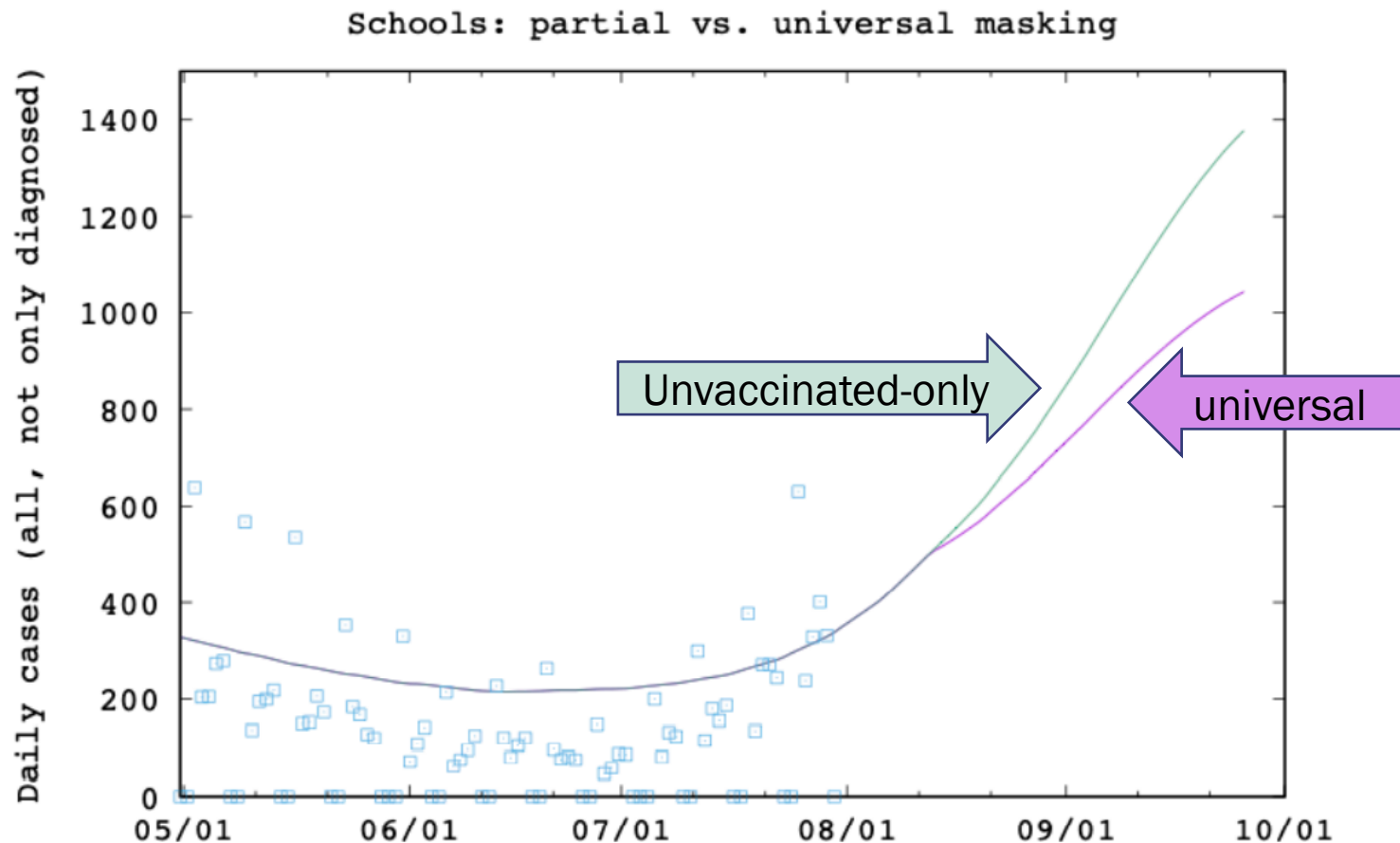


Cloth mask over medical procedure mask Medical procedure mask with knotted ear loops and tucked-in sides Mask fitter Nylon covering over mask

CDC.GOV bit.ly/MMWR21021 MMWR

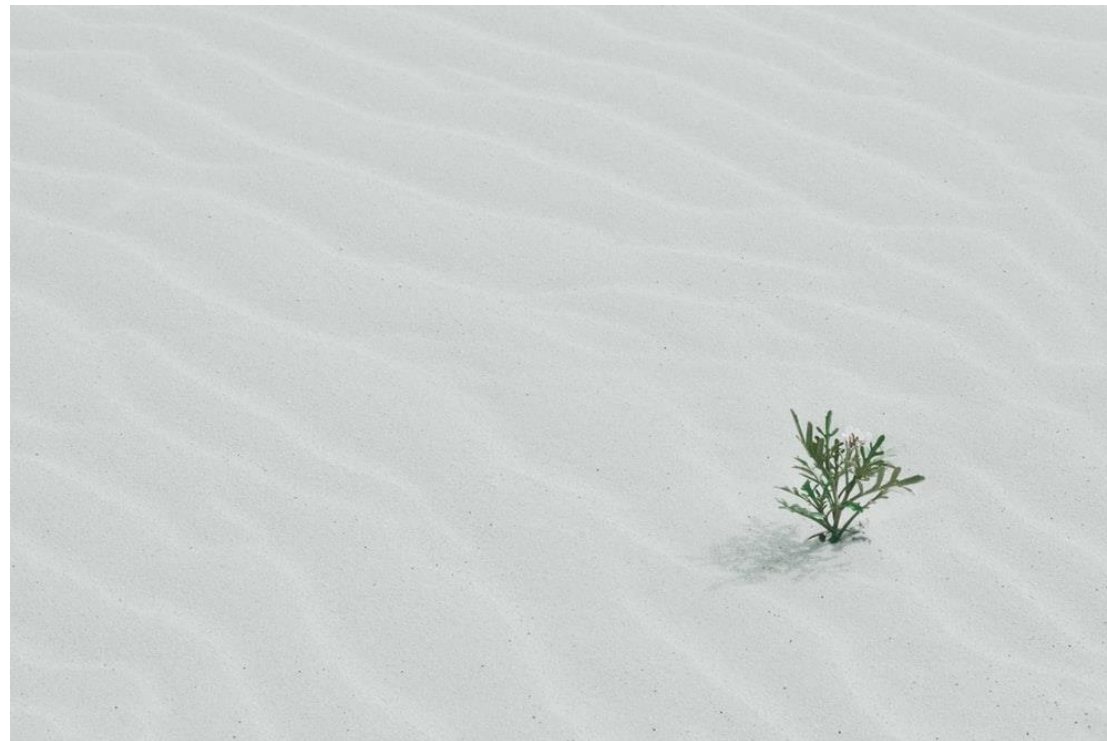
Partial masking in schools = 400 more cases per day

- Model is for *all* daily cases in NM, not just in schools
- Modeling for school masking has two arms:
 - Universal = **all** students, teachers, and staff wear masks = 1,000 cases per day
 - Unvaccinated only = **all unvaccinated** students, teachers, and staff wear masks = 1,400 cases per day



For every 49 New Mexicans who get vaccinated, we save one life.

- 215,098 total cases of COVID-19 in New Mexico, 4,425 have resulted in death = 2.1% Case fatality rate, or 1 death per 49 cases
- We know the COVID-19 vaccine is 90% effective and 10% of New Mexicans have had COVID-19
- Please get vaccinated TODAY, visit vaccineNM.org to find a vaccine site near you



MISINFORMATION MOMENT

Unvaccinated Dad Records Days of Regret in Hospital – and Makes Heartbreaking Request for Daughter’s Wedding in Case He Dies CNN



Facebook/Travis Campbell
August 3

LIFE & DEATH

UNVACCINATED MAN FROM ICU BED: "I MESSED UP" DON'T LISTEN TO SOCIAL MEDIA

Travis Campbell | Covid Patient, Regrets not Getting the Vaccine



NEW DAY

<https://www.cnn.com/2021/08/06/health/coronavirus-virginia-travis-campbell-vaccine-regret/index.html>



Investing for tomorrow, delivering today.

1190 S. St. Francis Drive • Santa Fe, NM 87505 • Phone: 505-827-2613 • Fax: 505-827-2530 • nmhealth.org

The virus is changing - GET VACCINATED this week! Get tested if you have symptoms!

- New COVID variants are spreading up to 2-4x more rapidly and resist some treatments.
- Get tested if you think you have COVID-19 or have been exposed to someone who is positive.
- If you have COVID-19, learn if you're eligible for monoclonal antibody treatment.
- Be especially careful indoors no matter where you live in NM.

CASE COUNTS REMAIN TOO HIGH. WE ALL STILL MUST FIGHT THE VIRUS.

- Wash hands, clean surfaces, cough into tissue/elbow.
- Everyone mask up and maintain social distancing (minimum 6').
- Get needed preventive healthcare.



Investing for tomorrow, delivering today.

1190 S. St. Francis Drive • Santa Fe, NM 87505 • Phone: 505-827-2613 • Fax: 505-827-2530 • nmhealth.org

ARE VACCINES EFFECTIVE?

Yes! Getting vaccinated prevents severe illness, hospitalization, and death; it also helps reduce the spread of the virus in communities.

With the Delta variant, vaccination is more urgent than ever.

Protected from	Vaccinated	Unvaccinated
Severe Symptoms	✓	✗
Hospitalization	✓	✗
Death	✓	✗



cdc.gov/coronavirus

CS22918-A 07/27/2021