

# COVID-19 DAY 379 PRESS UPDATE MARCH 24, 2021

SECRETARIES TRACIE COLLINS, M.D. (DOH) & DAVID R. SCRASE, M.D. (HSD) &  
STATE SCIENTIFIC LAB DIRECTOR MIKE EDWARDS, PHD (DOH)

*INVESTING FOR TOMORROW, DELIVERING TODAY.*

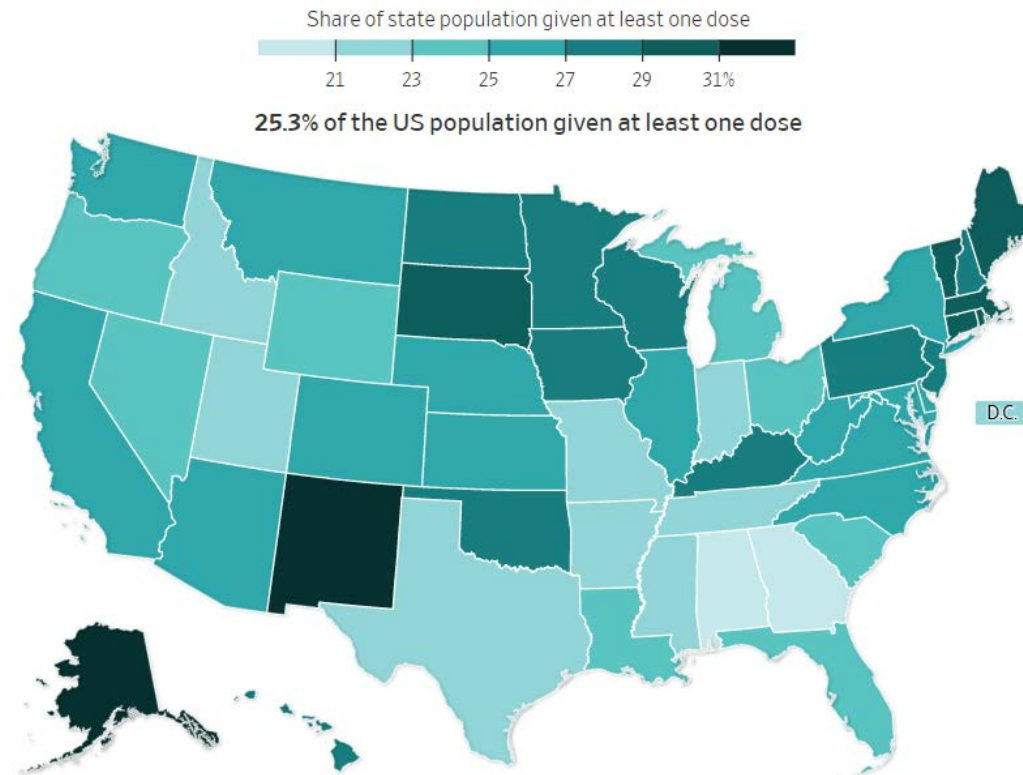
# COVID-19 Vaccine Update

## March 24, 2021

Dr. Tracie Collins

Cabinet Secretary, Department of Health

# New Mexico fastest state in the country for vaccination by population (as of 3/24)



Last updated March 24, at 11:00 a.m.  
Source: Centers for Disease Control and Prevention

# Vaccinations in New Mexico

- 39.8% of New Mexicans (16+) have received at least a first shot
- 24.2% of New Mexicans (16+) are fully vaccinated

# Vaccinating educators

- 62,032 registered for vaccine
- 51,405 (82.8%) with at least a first shot
- 19,886 (32.1%) fully vaccinated

# Phases 1A, 1B, and 1C are eligible

- Health care workers
- New Mexicans aged 60 and over
- New Mexicans with a chronic condition
- All essential workers
- Residents of congregate care facilities

# Prioritizing in order of COVID-related health risk

- While most New Mexicans 16+ are eligible for vaccine, there is still greater demand than supply
- DOH continues to prioritize invitations to earlier phases: health care workers, 75+, and 60+ with severe chronic conditions

# Vaccine supply

- Next week's allocation will be 116,280 doses, including 12,100 doses of J&J.
- This is approximately 20,000 more doses than last week.
- NM has the capacity to distribute tens of thousands doses more each week.



# New Mexico has three vaccines

- All vaccines available in the U.S. were highly effective at preventing hospitalizations and deaths in clinical trials.
- All vaccines authorized by the FDA are safe and effective.
- All vaccines available in the U.S. are highly effective against severe COVID-19.
- All vaccines are appropriate for all racial and ethnic groups.

# Get vaccinated with the first vaccine available

- Vaccines, testing, and COVID-safe practices will keep more of our loved ones from being hospitalized or dying due to COVID-19.
- Please get a vaccine as soon as you are eligible. It could save your life.

# Registration update

- More supply is coming!
- Register at **vaccinenm.org**
- More than 770,000 New Mexicans registered for vaccine.

# NM Notify App

- NMNotify.com
- Alerts users who have been in contact with someone who has COVID-19 so they can take appropriate next steps
- **Uses Bluetooth technology: anonymous, safe and does not store or exchange personal data**
- Will help New Mexicans avoid infections and protect our loves ones
- Available in English and Spanish

# COVID-19 Variants

**Dr. Michael Edwards**  
**Director, Scientific Laboratory Division**  
**Department of Health**

# What is a SARS-COV-2 variant?

- SARS-COV-2 RNA mutate during replication.
- Mutations may or may not lead to structural change in the virus.
- A variant can be defined as a cluster of distinct genomic sequences associated with an epidemiological event. These variants may include distinct patterns of mutations.

# Variants in New Mexico

- 68 variants identified in New Mexico since January.
- CDC classifies according to three types:
  - Variants of interest
  - Variants of concern
  - Variants of high consequence
- **As of today, no variants of high consequence in NM.**

# SARS-COV-2 genomic surveillance efforts in New Mexico

New Mexico has dramatically increased surveillance efforts since January.

Key contributors include:

- DOH Scientific Laboratory Division
- DOH Epidemiology and Response Division
- UNM genomic scientists
- Tricore Reference Laboratory



# Genomic surveillance takeaways

- New Mexico has an active genomic surveillance program
- SARS-COV-2 has been shown to mutate every few weeks
- **When we slow the spread of the virus, we keep mutation rates down**
- Please keep up the great work!
  - Vaccinations
  - Social distancing
  - Face coverings
  - Hand-washing

# WE ALL BENEFIT FROM NM'S VACCINE PROGRESS

If a majority of the population is immune, the disease cannot spread easily.



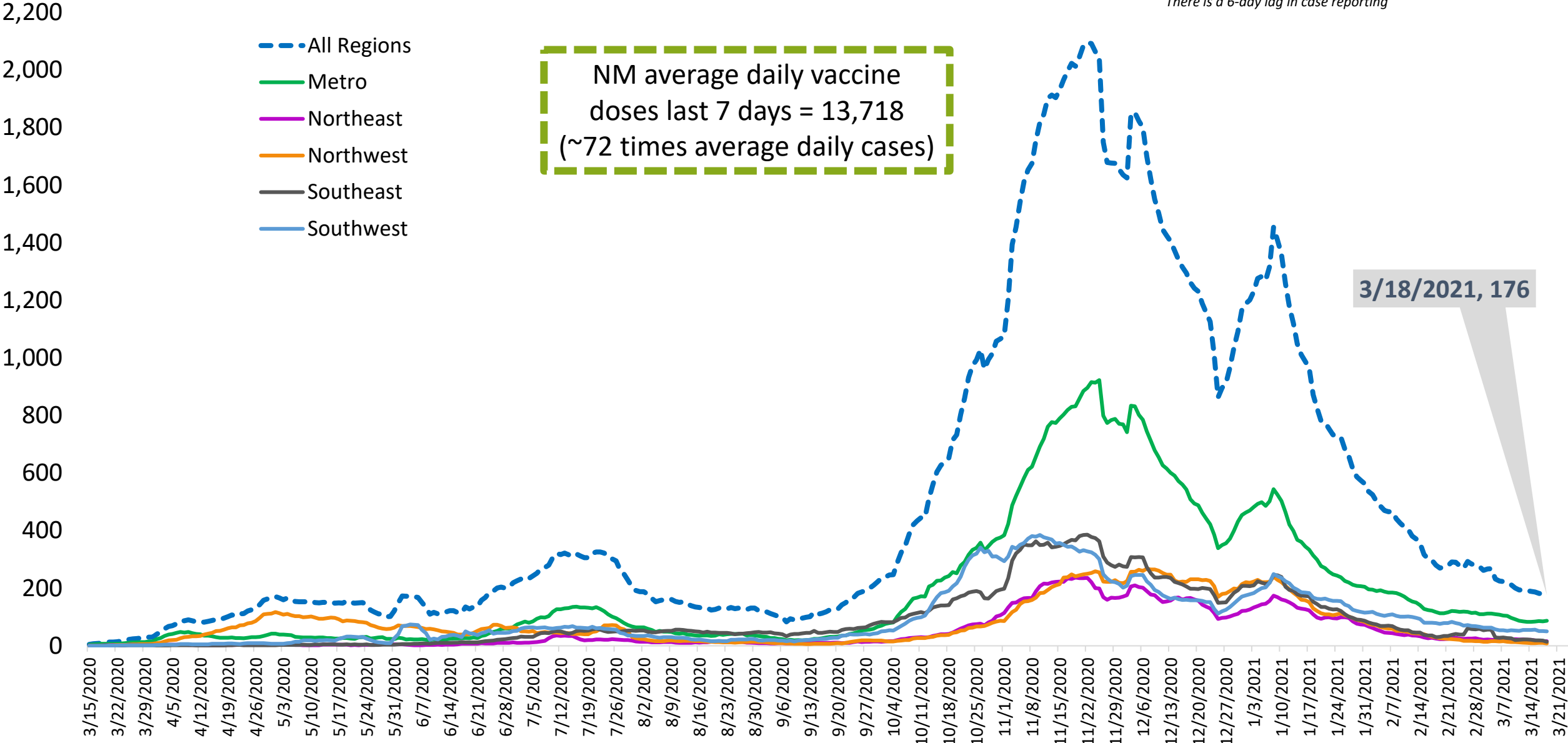
# NM CHILD CARE UPDATE

- Effective Monday, March 29, 2021, licensed childcare providers may return to the group size and ratio requirements that are aligned to their licensed Star level.
- Additional guidance on changes in childcare will be released later this week by NM Early Childhood Education and Care Department.
- Families who need assistance in locating childcare, please call 1-800-691-9067 or go to [newmexicokids.org](https://newmexicokids.org) to search for options in your community.
- Families needing assistance in paying for childcare can apply at Am I Eligible:  
<https://eligibility.ececd.state.nm.us>.
- For more information and assistance, please call the Early Childhood Education and Care Department 1-800-832-1321.

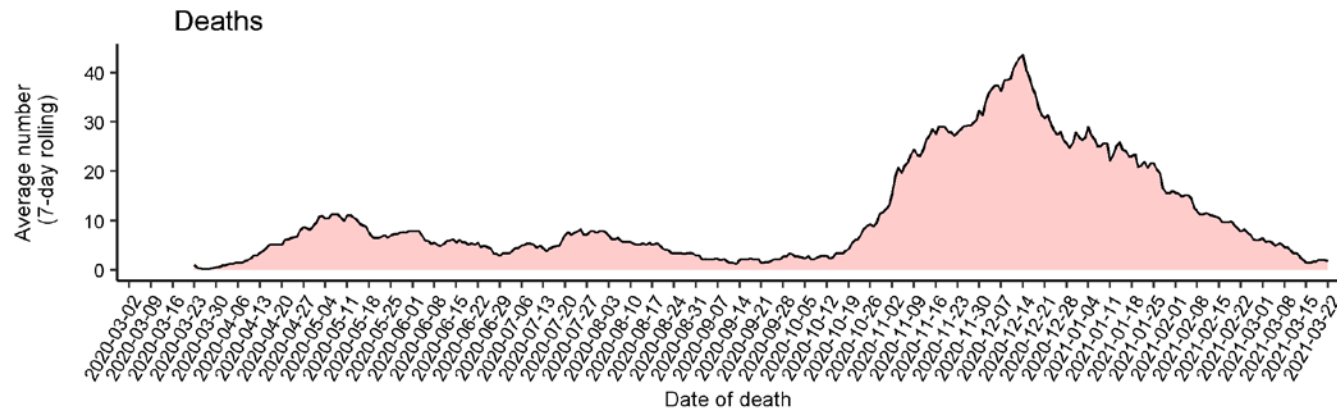
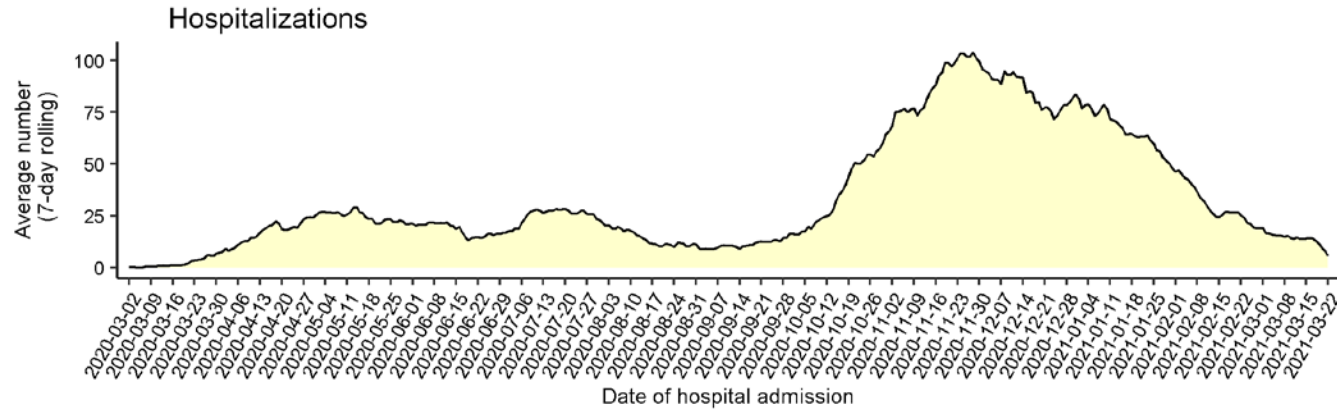
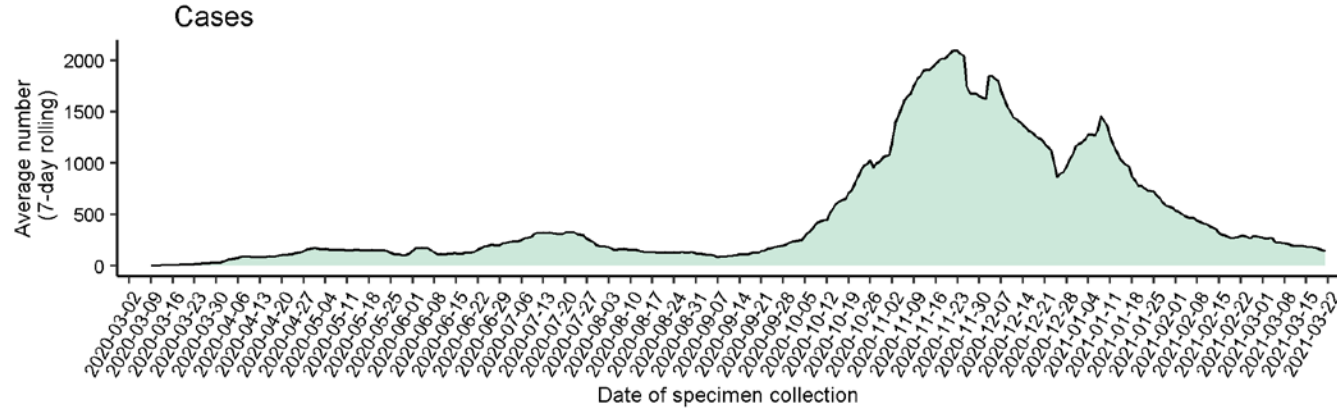


# 7-Day Average of Daily COVID-19 Positive Cases by Date of Specimen Collection, NMDOH Regions 3/24/2021

Source: New Mexico Department of Health  
There is a 6-day lag in case reporting



# Average number (7-day rolling average) of cases, hospitalizations, and deaths over time



Note: Cases, hospitalizations, and deaths may not yet be reported in 7 or more days.

As of 3/22/21



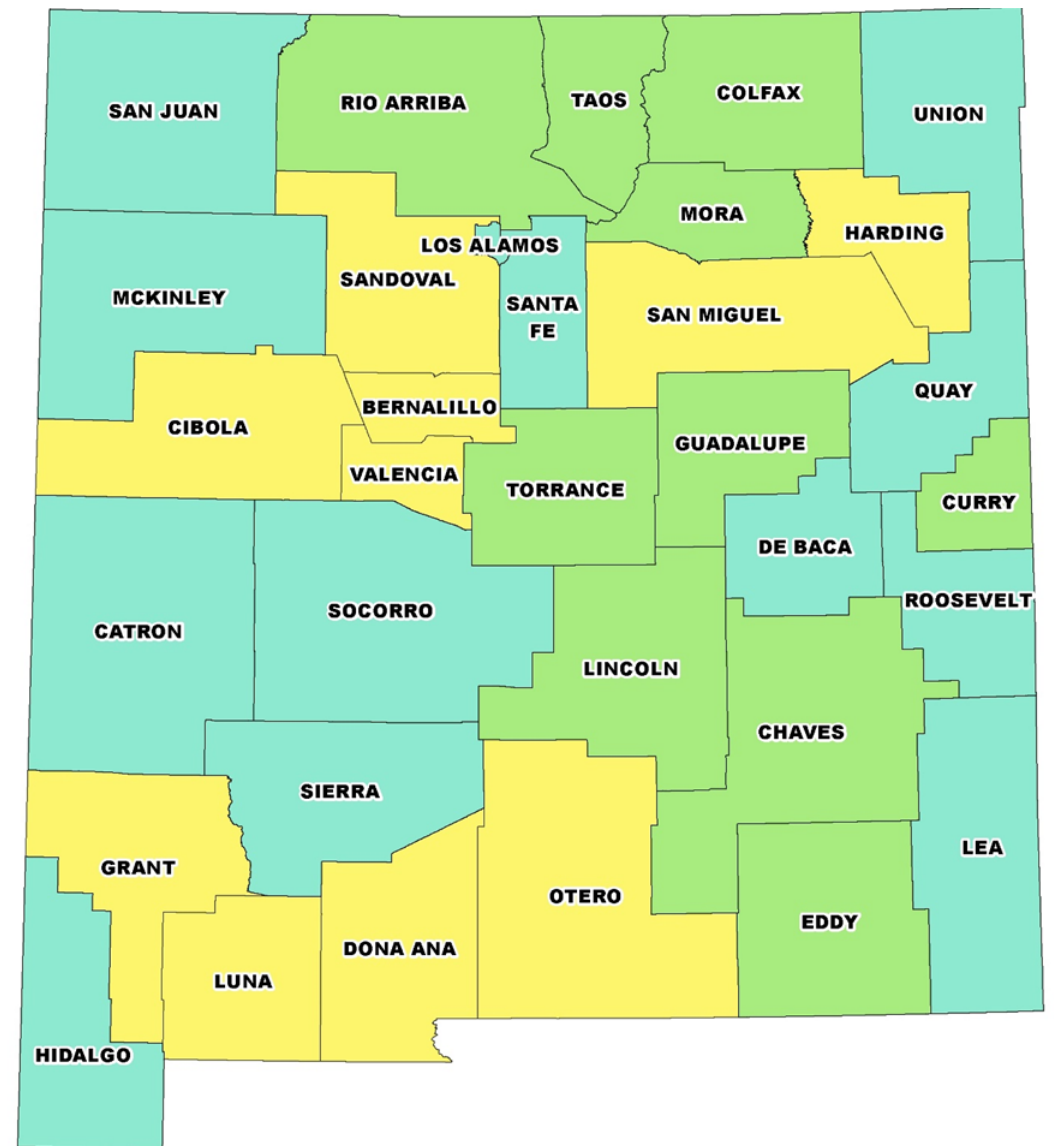
# STATEWIDE PUBLIC HEALTH GATING CRITERIA FOR REOPENING

Criterion	Measure	Gating Target	Current Status
Spread of COVID-19	Rate of COVID-19 Transmission (10-day Rolling Average)	1.05 or less	0.96 on 3/23/21
	NM daily cases (7-day rolling average)	168	176 on 3/18/21
Testing Capacity: general and targeted populations*	Number of tests per day (7-day rolling average)	5,000 / day	9,279 on 3/22/21
	Test Positivity Rate (7-day rolling average)	5.0% or less	2.3% on 3/22/21
Contact Tracing and Isolation Capacity	Time from positive test result to: -isolation recommendation for case	24 hrs	Week ending 3/19 = 18
	-quarantine rec. for case contacts	36 hrs	Week ending 3/19 = 26
Statewide Health Care System Capacity	Availability of scarce resources in 7 Hub Hospitals: -Adult ICU beds occupied	439 or less	263 on 3/24/21
	-PPE	7-day supply	7 on 3/22/21

**ALL 4 CRITERIA DRIVEN BY SOCIAL DISTANCING BEHAVIORS OF NEW MEXICANS**

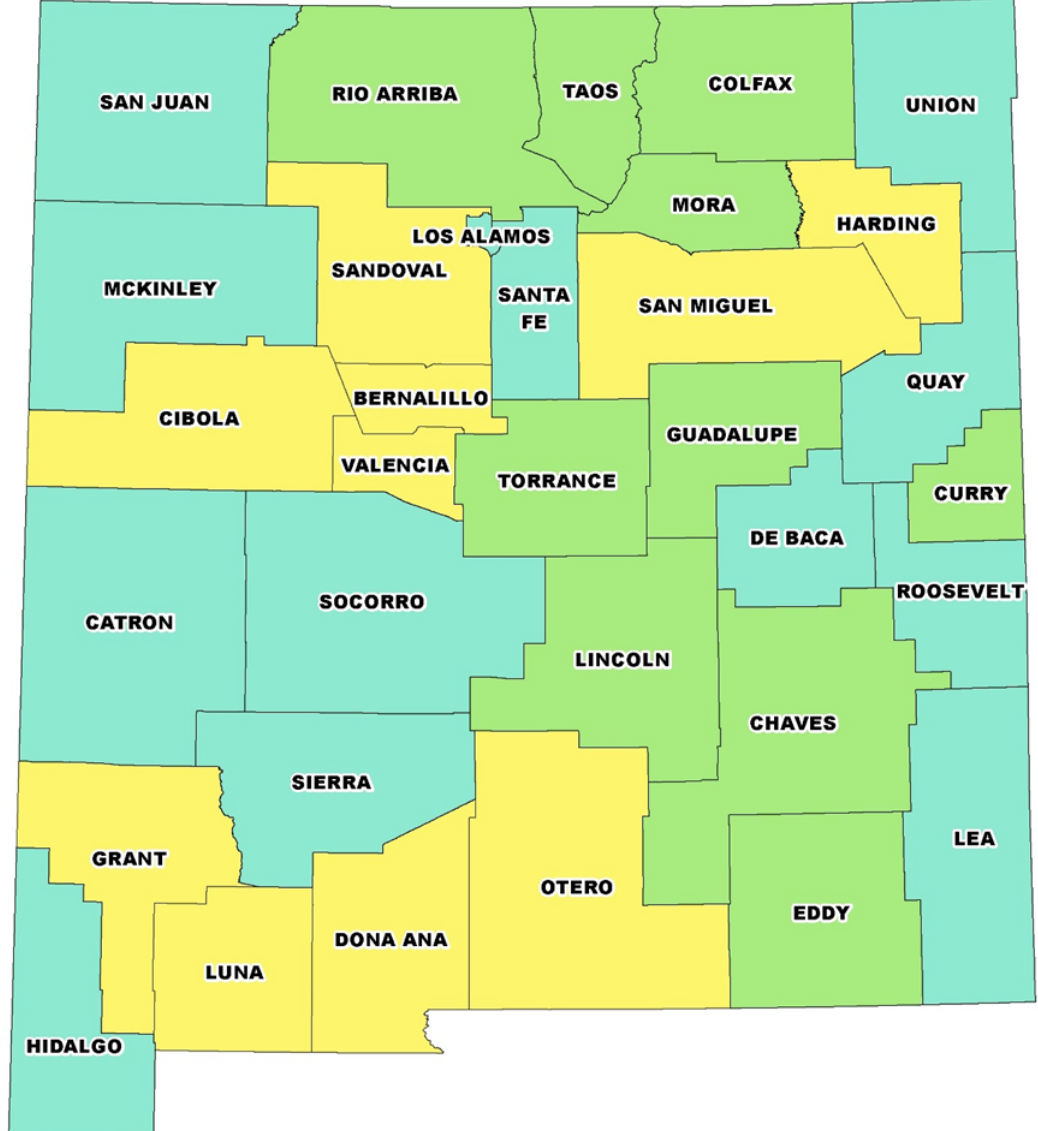
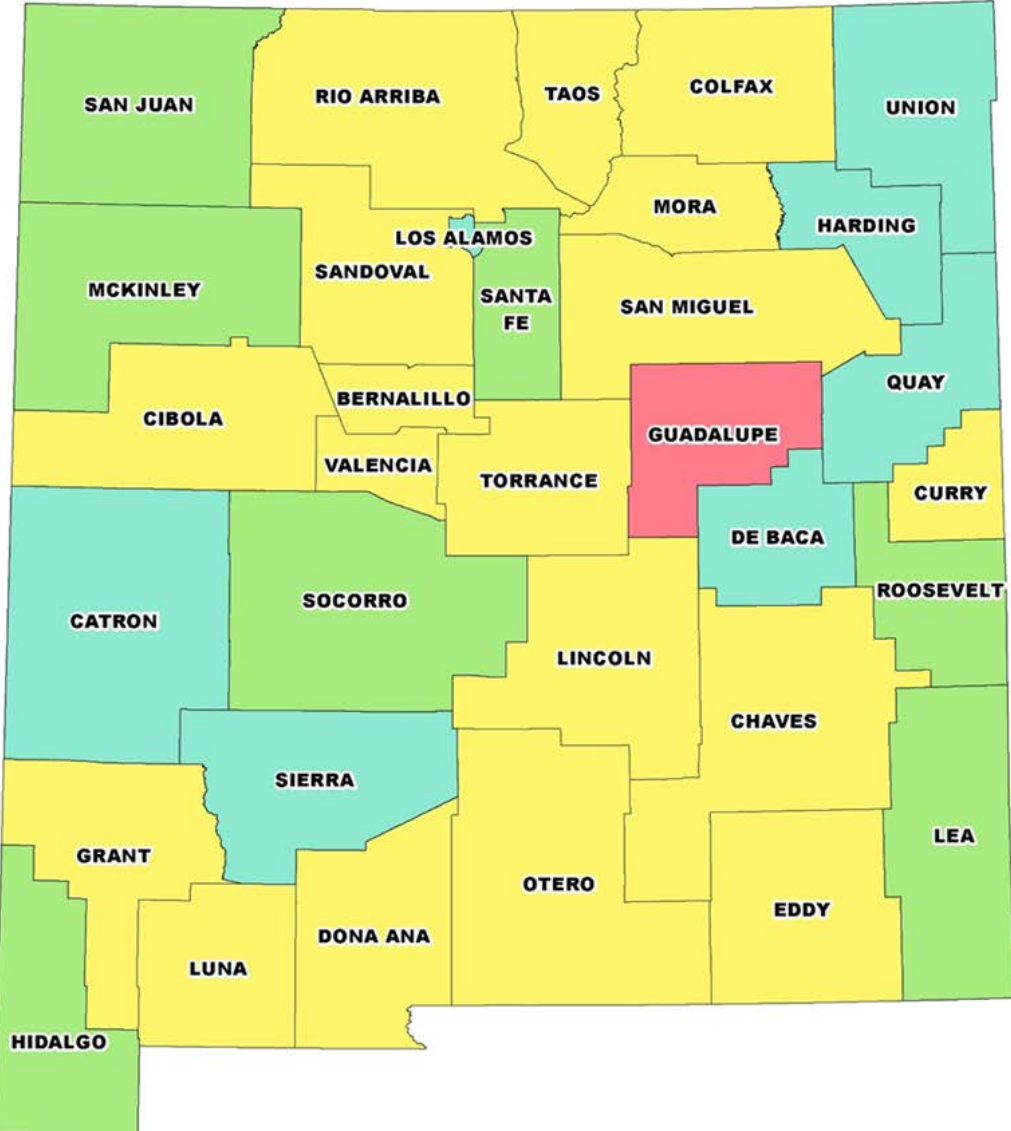
# COUNTY UPDATE

- State making great progress
- No red counties
- 13 Turquoise counties (Catron, Socorro, Sierra, Hidalgo, McKinley, San Juan, Los Alamos, Santa Fe, Union, Quay, De Baca, Roosevelt, Lea)
- 10 green counties (Rio Arriba, Taos, Colfax, Mora, Torrance, Guadalupe, Curry, Lincoln, Chaves, Eddy)



- Both Average Daily Cases 8 or fewer per 100,000 and Test Positivity 5% or lower for two consecutive reporting periods
- Both Average Daily Cases 8 or fewer per 100,000 and Test Positivity 5% or lower
- Either Average Daily Cases 8 or fewer per 100,000 or Test Positivity 5% or lower
- Both Average Daily Cases more than 8 per 100,000 and Test Positivity greater than 5%

COVID-19 Average Daily Case Rates by Test Positivity, New Mexico Counties, March 9 - March 22, 2021



- Both Average Daily Cases 8 or fewer per 100,000 and Test Positivity 5% or lower for two consecutive reporting periods
- Both Average Daily Cases 8 or fewer per 100,000 and Test Positivity 5% or lower
- Either Average Daily Cases 8 or fewer per 100,000 or Test Positivity 5% or lower
- Both Average Daily Cases more than 8 per 100,000 and Test Positivity greater than 5%

- Both Average Daily Cases 8 or fewer per 100,000 and Test Positivity 5% or lower for two consecutive reporting periods
- Both Average Daily Cases 8 or fewer per 100,000 and Test Positivity 5% or lower
- Either Average Daily Cases 8 or fewer per 100,000 or Test Positivity 5% or lower
- Both Average Daily Cases more than 8 per 100,000 and Test Positivity greater than 5%

**COVID-19 Average Daily Case Rates by Test Positivity, New Mexico Counties, February 23 - March 8, 2021**

**COVID-19 Average Daily Case Rates by Test Positivity, New Mexico Counties, March 9 - March 22, 2021**



# WE ARE CURRENTLY EVALUATING CHANGES TO RGYT FRAMEWORK

- Economic Recovery and Mayor's Councils, Modeling Team concerned regarding changes to the test positivity rate with vaccination
- Interim "fix" for small counties to prevent instability from one 2-week period to the next
- Under this correction, Harding county moves from Turquoise to Yellow (rather than to Red)

County	Population	Number in 14 Days to be >8/100K
Harding	657	0.7
DeBaca	1,840	2.1
Catron	3,533	4.0
Union	4,090	4.6
Hidalgo	4,242	4.8
Guadalupe	4,419	4.9
Mora	4,566	5.1
<b>Cutoff</b>	<b>6,250</b>	<b>7.0</b>

# BODY WEIGHT CHANGES DURING PANDEMIC-RELATED SHELTER-IN-PLACE IN A LONGITUDINAL COHORT STUDY

JAMA NETWORK OPEN

- Researchers performed longitudinal analysis of data from 2/1 to 6/1, 2020 from participants who volunteered to report weight measurements from their Bluetooth-connected smart scale (Fitbit or iHealth).
- 7,444 weight measurements from 269 unique study participants (residing in 37 states and DC) collected, with mean (SD) of 28 (24) weight measurements per participant.
- **Post-Shelter in Place participants experienced steady weight gain 0.60 lbs every 10 days (95% CI, 0.37 to 0.84 lbs per 10 days;  $P < .001$ ), irrespective of geographic location or comorbidities.**
- **Results translate ~1.5 lb of weight gain every month.**

Figure. Mean Weight Change After Shelter-in-Place for the Study Population

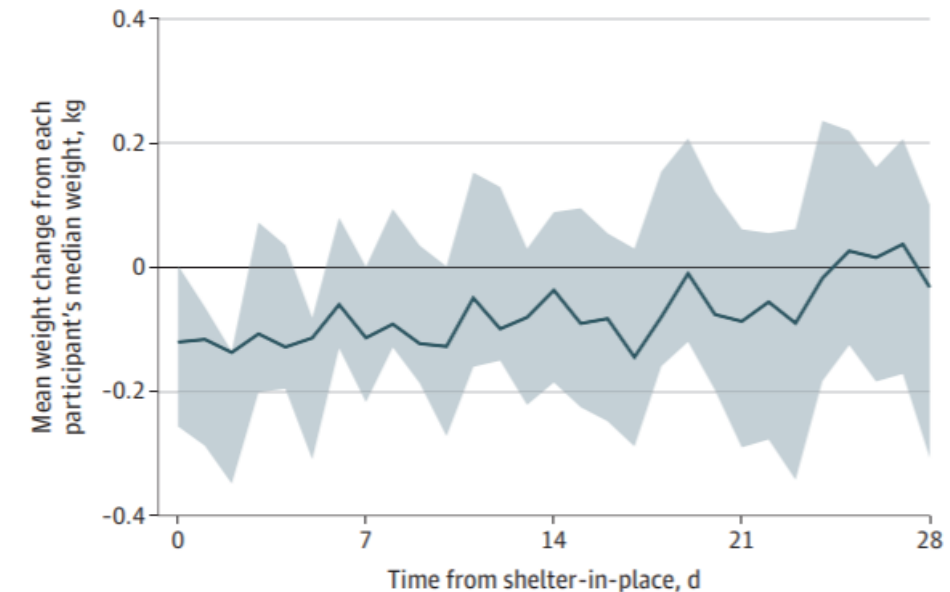


Figure data normalized as weight above or below each participant's median weight in kilograms. Shaded areas denote the 95% CI for the mean weight of study participants after shelter-in-place.

# WE MUST REMAIN VIGILANT

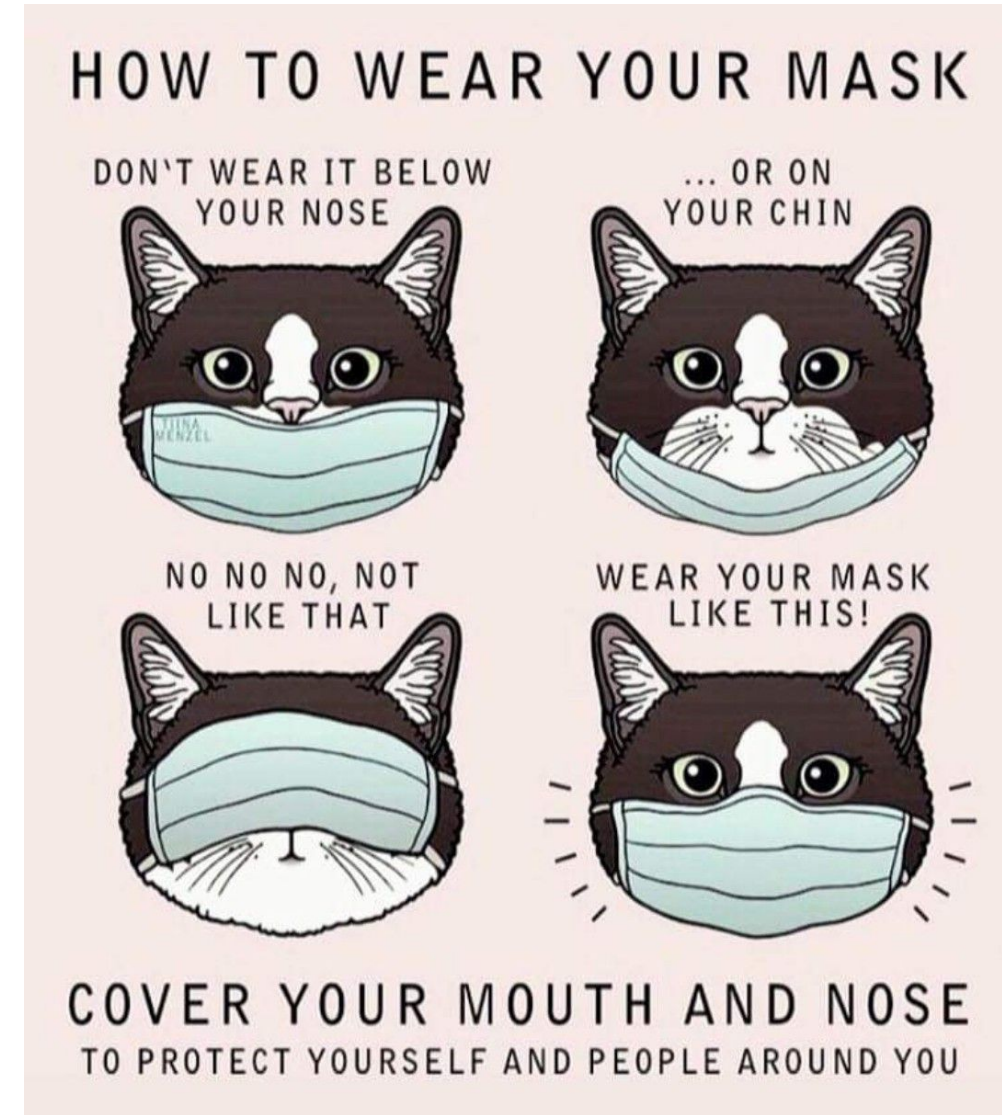
The virus is changing!

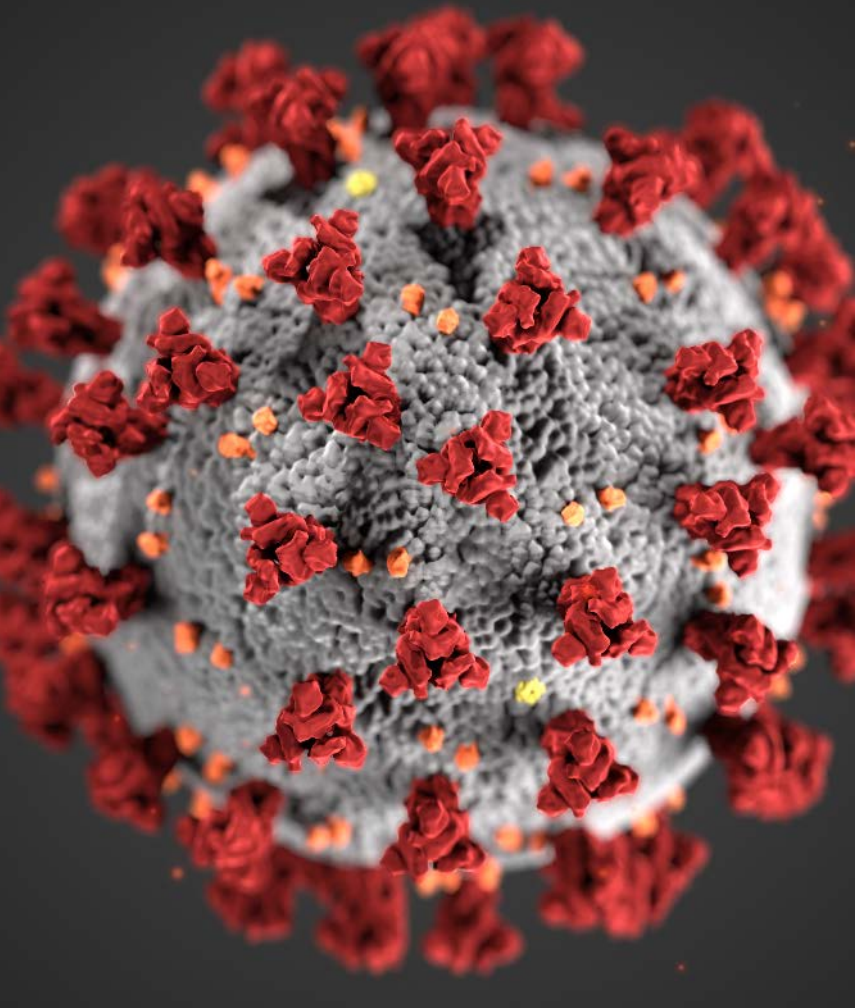
- **Get vaccinated.**
- New COVID variants may spread more rapidly and be resistant to treatments and/or vaccines.
- Get tested if you think you have COVID-19 or have been exposed to someone who is positive.
- If you have COVID-19, learn if you're eligible for monoclonal antibody treatment.
- We ALL need to stay committed to fighting the virus for several more months.

**CASE COUNTS REMAIN TOO HIGH.**

**WE ALL STILL MUST FIGHT THE VIRUS.**

- Stay at home.
- Wash hands, clean surfaces, cough into tissue/elbow.
- **Everyone** needs to wear face coverings in public.
- Maintain social distancing (minimum 6 feet).
- Be particularly careful in the month after receiving the vaccine.





# QUESTIONS

*INVESTING FOR TOMORROW, DELIVERING TODAY.*