



Infant Mortality and Selected Birth Characteristics



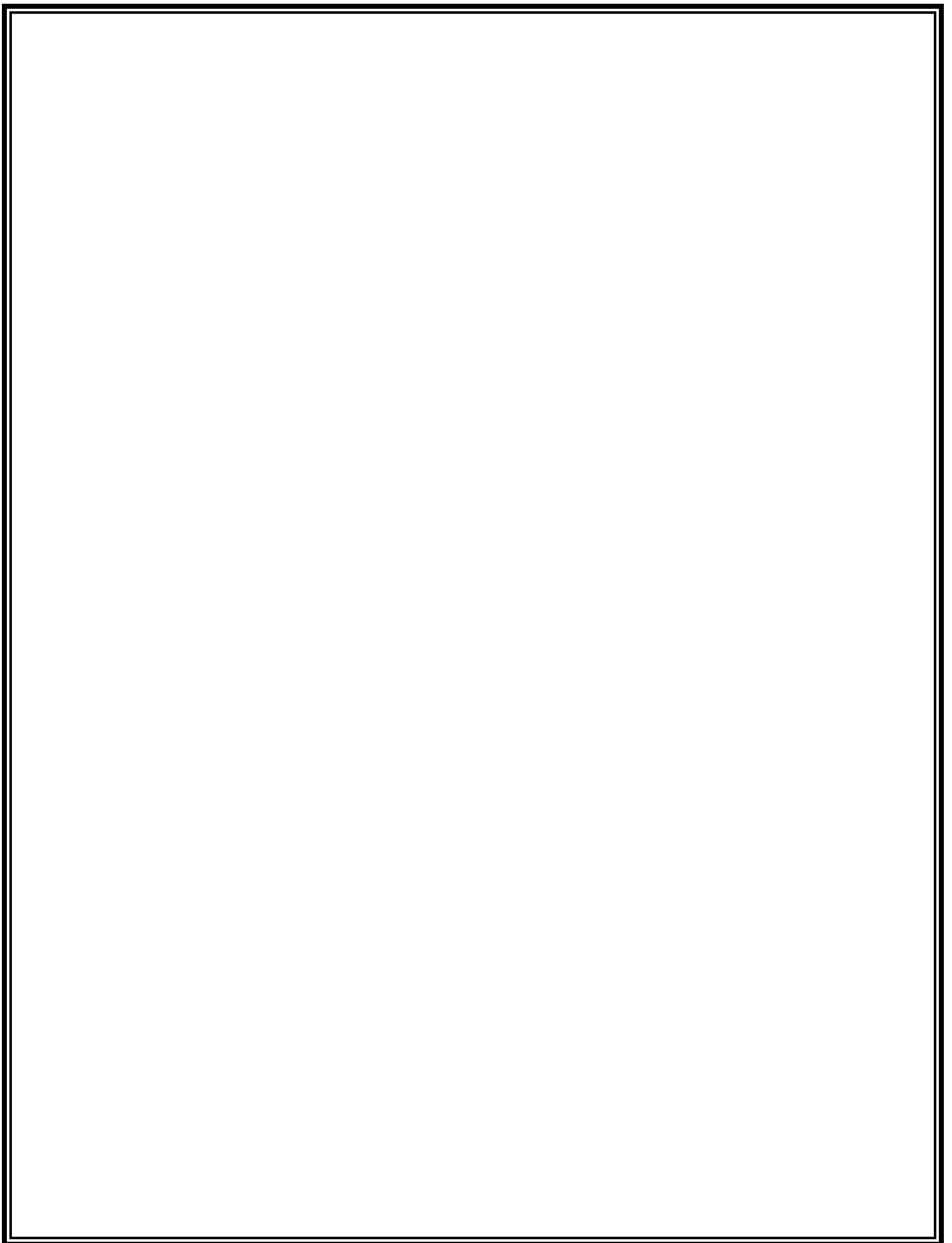
2013 South Carolina Residence Data

October 2014

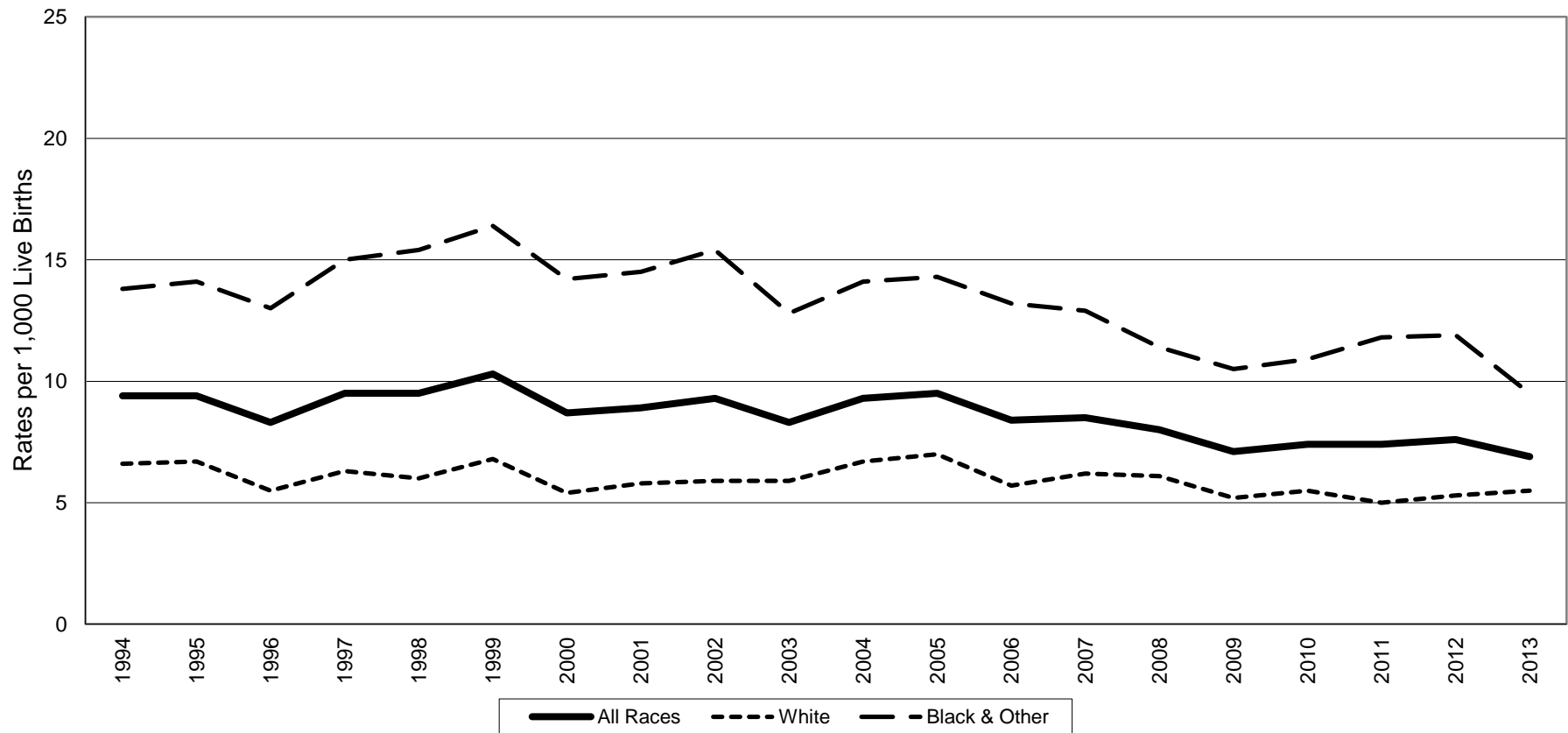
**South Carolina Department of Health and Environmental Control
Office of Public Health Statistics and Information Services
Division of Biostatistics
2600 Bull Street
Columbia, SC 29201**

**Phone: (803)898-3649
Fax: (803)898-3661**





South Carolina Infant Mortality Rates¹ by Race² Residence Data, 1994-2013



	1994	1995	1996	1997	1998	1999	2000	2001	2002	2003	2004	2005	2006	2007	2008	2009	2010	2011	2012	2013
All Races	9.4	9.4	8.3	9.5	9.5	10.3	8.7	8.9	9.3	8.3	9.3	9.5	8.4	8.5	8.0	7.1	7.4	7.4	7.6	6.9
White	6.6	6.7	5.5	6.3	6.0	6.8	5.4	5.8	5.9	5.9	6.7	7.0	5.7	6.2	6.1	5.2	5.5	5.0	5.3	5.5
Black & Other	13.8	14.1	13.0	15.0	15.4	16.4	14.2	14.5	15.4	12.8	14.1	14.3	13.2	12.9	11.4	10.5	10.9	11.8	11.9	9.5

¹Rates per 1,000 live births

²Race of mother

Table 1.
 Infant Mortality Rates¹ with 95% Confidence Intervals²
 South Carolina, 1994-2013
 (Residence Data)

Year	Number of Live Births	Number of Infant Deaths	Infant Mortality Rate	95% Confidence Intervals
1994	51,907	486	9.4	(8.5, 10.2)
1995	50,913	480	9.4	(8.6, 10.2)
1996	51,105	424	8.3	(7.5, 9.1)
1997	52,205	494	9.5	(8.7, 10.3)
1998	53,833	511	9.5	(8.7, 10.3)
1999	54,706	564	10.3	(9.4, 11.2)
2000	55,964	488	8.7	(7.9, 9.5)
2001	55,748	496	8.9	(8.1, 9.7)
2002	54,453	507	9.3	(8.5, 10.1)
2003	55,461	463	8.3	(7.5, 9.1)
2004	56,543	524	9.3	(8.5, 10.1)
2005	57,538	549	9.5	(8.7, 10.3)
2006	62,191	520	8.4	(7.6, 9.1)
2007	62,933	538	8.5	(7.8, 9.3)
2008	63,077	504	8.0	(7.3, 8.7)
2009	60,682	430	7.1	(6.4, 7.8)
2010	58,325	430	7.4	(6.7, 8.1)
2011	57,338	423	7.4	(6.7, 8.1)
2012	57,100	435	7.6	(6.9, 8.3)
2013	56,743	389	6.9	(6.2, 7.6)

Table 2.
 Infant Mortality Rates¹ with 95% Confidence Intervals²
 South Carolina
 1994-1998, 1999-2003, 2004-2008, 2009-2013
 (Residence Data)

Years	Number of Live Births	Number of Infant Deaths	Infant Mortality Rate	95% Confidence Intervals
1994-1998	259,963	2,395	9.2	(8.8, 9.6)
1999-2003	276,332	2,518	9.1	(8.8, 9.5)
2004-2008	302,282	2,635	8.7	(8.4, 9.0)
2009-2013	290,188	2,107	7.3	(7.0, 7.6)

¹Rates per 1,000 live births

² $r \pm 61.981 (r/n)^{1/2}$, where r = infant mortality rate and n = number of live births

Table 3.

Infant, Neonatal and Postneonatal Mortality and Mortality Rates¹ by Race²
 South Carolina
 2009, 2010, 2011, 2012 and 2013
 (Residence Data)

Infant Mortality									
	Total			White			Black & Other		
Year	Number of Live Birth	Number of Infant Death	Rate	Number of Live Birth	Number of Infant Death	Rate	Number of Live Birth	Number of Infant Death	Rate
2009	60,682*	430	7.1	39,348	206	5.2	21,284	224	10.5
2010	58,325*	430	7.4	37,927	208	5.5	20,361	222	10.9
2011	57,338*	423	7.4	37,406	188	5.0	19,894	235	11.8
2012	57,100*	435	7.6	37,092	197	5.3	19,959	238	11.9
2013	56,743*	389	6.9	37,177	204	5.5	19,513	185	9.5

Neonatal Mortality (<28 days)									
	Total			White			Black & Other		
Year	Number of Live Birth	Number of Infant Death	Rate	Number of Live Birth	Number of Infant Death	Rate	Number of Live Birth	Number of Infant Death	Rate
2009	60,682*	260	4.3	39,348	121	3.1	21,284	139	6.5
2010	58,325*	266	4.6	37,927	124	3.3	20,361	142	7.0
2011	57,338*	254	4.4	37,406	104	2.8	19,894	150	7.5
2012	57,100*	270	4.7	37,092	118	3.2	19,959	152	7.6
2013	56,743*	263	4.6	37,177	138	3.7	19,513	125	6.4

Postneonatal Mortality (28-364 days)									
	Total			White			Black & Other		
Year	Number of Live Birth	Number of Infant Death	Rate	Number of Live Birth	Number of Infant Death	Rate	Number of Live Birth	Number of Infant Death	Rate
2009	60,682*	170	2.8	39,348	85	2.2	21,284	85	4.0
2010	58,325*	164	2.8	37,927	84	2.2	20,361	80	3.9
2011	57,338*	169	2.9	37,406	84	2.2	19,894	85	4.3
2012	57,100*	165	2.9	37,092	79	2.1	19,959	86	4.3
2013	56,743*	126	2.2	37,177	66	1.8	19,513	60	3.1

¹Rates per 1,000 live births

²Race of mother

*Includes unknown race

Table 4.
Infant Mortality and Infant Mortality Rates¹
South Carolina and Each County, 2013, 2011-2013, 2008-2010
(Residence Data)

County of Residence	2013		2011-2013		2008-2010	
	Number	Rate	Number	Rate	Number	Rate
South Carolina	389	6.9	1,247	7.3	1,364	7.5
Abbeville	2	7.7	12	15.2	10	12.3
Aiken	11	6.3	35	6.3	36	6.1
Allendale	-	0	2	6.6	3	7.8
Anderson	18	7.9	54	8.0	51	7.3
Bamberg	-	0	4	8.4	5	9.1
Barnwell	5	15.9	10	10.6	4	4.4
Beaufort	5	2.4	25	4.1	26	3.9
Berkeley	17	6.5	54	7.0	49	6.3
Calhoun	-	0	2	4.5	3	6.0
Charleston	19	4.0	78	5.5	105	7.0
Cherokee	5	7.8	15	7.4	19	9.0
Chester	3	8.0	8	6.5	6	4.7
Chesterfield	8	15.3	20	12.9	28	16.8
Clarendon	5	14.3	12	11.5	4	3.5
Colleton	1	2.3	18	13.3	11	7.2
Darlington	5	6.6	23	9.7	31	12.5
Dillon	2	4.4	10	7.6	5	3.5
Dorchester	9	5.0	31	5.7	28	5.0
Edgefield	2	7.9	5	8.1	2	3.0
Fairfield	-	0	7	9.9	5	6.7
Florence	21	12.2	76	14.1	62	11.0
Georgetown	5	8.2	16	8.9	21	10.4
Greenville	37	6.1	109	6.0	132	6.9
Greenwood	7	7.8	25	9.3	27	9.4
Hampton	3	13.3	4	6.0	6	7.2
Horry	19	6.0	65	7.1	81	8.5
Jasper	1	3.2	6	6.2	9	8.2
Kershaw	8	12.1	15	7.1	12	5.0
Lancaster	5	5.4	19	7.0	22	8.0
Laurens	10	13.8	18	7.9	21	8.2
Lee	1	5.2	5	9.0	5	7.6
Lexington	15	4.6	63	6.5	61	5.9
McCormick	1	25.0	5	33.8	2	8.1
Marion	2	5.0	14	11.6	31	22.3
Marlboro	2	6.5	11	11.9	10	9.9
Newberry	3	6.6	8	6.1	7	4.6
Oconee	5	7.1	13	5.5	18	7.3
Orangeburg	16	14.3	38	11.2	52	13.1
Pickens	9	7.8	30	8.4	26	7.0
Richland	45	9.4	125	8.6	89	5.9
Saluda	1	4.7	7	9.7	11	14.3
Spartanburg	17	4.9	45	4.2	92	7.9
Sumter	6	3.9	26	5.7	42	8.7
Union	2	6.5	5	5.5	8	7.8
Williamsburg	3	9.6	15	14.8	14	11.3
York	28	9.7	59	6.8	71	7.9

¹Rates per 1,000 live births. Rates calculated with 20 or fewer deaths are unreliable and should be used cautiously.

Table 4-A.
White¹ Infant Mortality and Infant Mortality Rates²
South Carolina and Each County, 2013, 2011-2013, 2008-2010
(Residence Data)

County of Residence	2013		2011-2013		2008-2010	
	Number	Rate	Number	Rate	Number	Rate
South Carolina	204	5.5	589	5.3	662	5.6
Abbeville	2	11.4	8	15.3	2	3.8
Aiken	4	3.4	17	4.6	16	4.0
Allendale	-	0	-	0	-	0
Anderson	13	7.2	34	6.5	31	5.6
Bamberg	-	0	1	6.5	1	5.7
Barnwell	1	7.3	1	2.3	1	2.4
Beaufort	3	2.0	15	3.4	14	2.9
Berkeley	9	4.7	22	3.9	31	5.5
Calhoun	-	0	-	0	3	11.7
Charleston	8	2.6	37	4.0	44	4.8
Cherokee	4	8.5	12	8.1	13	8.4
Chester	2	10.1	4	6.0	4	6.0
Chesterfield	6	19.1	10	11.2	14	14.2
Clarendon	-	0	2	4.4	2	4.2
Colleton	-	0	4	5.7	4	4.8
Darlington	1	2.6	7	5.9	13	10.7
Dillon	-	0	1	1.9	1	1.7
Dorchester	5	3.9	13	3.4	17	4.4
Edgefield	-	0	1	3.3	-	0
Fairfield	-	0	1	4.3	3	13.5
Florence	6	7.4	21	8.1	19	7.2
Georgetown	4	11.7	6	6.3	3	2.8
Greenville	23	5.0	66	4.8	70	4.8
Greenwood	3	5.6	12	7.4	14	7.8
Hampton	1	10.8	2	8.0	-	0
Horry	10	4.0	41	5.7	53	7.0
Jasper	1	6.4	4	7.8	3	4.8
Kershaw	6	12.9	9	5.9	11	6.6
Lancaster	4	6.1	11	5.7	10	5.2
Laurens	6	11.9	12	7.5	15	8.6
Lee	-	0	-	0	1	6.4
Lexington	12	4.7	40	5.2	39	4.7
McCormick	-	0	-	0	-	0
Marion	-	0	1	2.6	7	15.5
Marlboro	-	0	2	5.7	3	8.6
Newberry	1	3.7	2	2.5	5	5.2
Oconee	4	6.2	10	4.7	18	8.0
Orangeburg	4	12.1	9	9.1	8	6.9
Pickens	9	8.5	28	8.6	23	6.8
Richland	12	6.0	31	5.1	17	2.6
Saluda	-	0	4	7.3	6	10.8
Spartanburg	13	5.0	31	4.0	56	6.6
Sumter	2	2.7	8	3.7	14	6.2
Union	2	9.9	4	6.8	5	7.7
Williamsburg	-	0	4	11.9	1	3.0
York	23	11.1	41	6.5	46	6.9

¹Race of mother

²Rates per 1,000 live births. Rates calculated with 20 or fewer deaths are unreliable and should be used cautiously.

Table 4-B.
Black and Other¹ Infant Mortality and Infant Mortality Rates²
South Carolina and Each County, 2013, 2011-2013, 2008-2010
(Residence Data)

County of Residence	2013		2011-2013		2008-2010	
	Number	Rate	Number	Rate	Number	Rate
South Carolina	185	9.5	658	11.1	701	11.0
Abbeville	-	0	4	15.0	8	28.5
Aiken	7	12.4	18	10.0	20	10.2
Allendale	-	0	2	8.1	3	9.5
Anderson	5	10.5	20	13.9	20	13.5
Bamberg	-	0	3	9.3	4	10.7
Barnwell	4	22.5	9	17.6	3	6.1
Beaufort	2	3.5	10	5.9	12	6.5
Berkeley	8	11.5	32	15.2	18	8.3
Calhoun	-	0	2	10.1	-	0
Charleston	11	6.7	41	8.1	61	10.5
Cherokee	1	6.1	3	5.6	6	10.5
Chester	1	5.7	4	7.2	2	3.3
Chesterfield	2	9.6	10	15.2	14	20.7
Clarendon	5	25.9	10	16.9	2	3.0
Colleton	1	4.8	14	21.5	7	9.9
Darlington	4	10.9	16	13.5	18	14.2
Dillon	2	7.6	9	11.6	4	4.8
Dorchester	4	7.5	18	11.1	11	6.5
Edgefield	2	17.5	4	13.0	2	6.0
Fairfield	-	0	6	12.6	2	3.8
Florence	15	16.6	55	19.7	43	14.5
Georgetown	1	3.7	10	11.8	18	19.2
Greenville	14	9.7	43	9.9	62	13.6
Greenwood	4	11.1	13	12.3	13	12.0
Hampton	2	15.3	2	4.8	6	12.7
Horry	9	13.7	24	12.3	28	14.6
Jasper	-	0	2	4.5	6	12.6
Kershaw	2	10.3	6	10.4	1	1.4
Lancaster	1	3.8	8	10.3	12	14.3
Laurens	4	18.0	6	8.7	6	7.4
Lee	1	7.2	5	12.6	4	8.1
Lexington	3	4.5	23	11.6	22	10.9
McCormick	1	35.7	5	52.1	2	12.2
Marion	2	7.4	13	15.8	24	25.7
Marlboro	2	10.1	9	15.6	7	10.5
Newberry	2	10.9	6	11.5	2	3.6
Oconee	1	17.9	3	13.3	-	0
Orangeburg	12	15.2	29	12.0	43	15.4
Pickens	-	0	2	6.1	3	8.4
Richland	33	11.8	94	11.2	72	8.4
Saluda	1	22.2	3	17.2	5	23.6
Spartanburg	4	4.4	14	5.0	36	11.4
Sumter	4	5.1	18	7.5	28	10.9
Union	-	0	1	3.2	3	8.1
Williamsburg	3	14.9	11	16.2	13	14.4
York	5	6.2	18	7.5	25	10.8

¹Race of mother

²Rates per 1,000 live births. Rates calculated with 20 or fewer deaths are unreliable and should be used cautiously.

Table 5.

Infant, Neonatal and Postneonatal Mortality Rates¹ by Race²
 and Percent Changes from 2012 to 2013
 South Carolina
 (Residence Data)

Infant Mortality			
Year	Total	White	Black & Other
2012	7.6	5.3	11.9
2013	6.9	5.5	9.5
Percent Change	-9.2%	3.8%	-20.2%

Neonatal Mortality			
Year	Total	White	Black & Other
2012	4.7	3.2	7.6
2013	4.6	3.7	6.4
Percent Change	-2.1%	15.6%	-15.8%

Postneonatal Mortality			
Year	Total	White	Black & Other
2012	2.9	2.1	4.3
2013	2.2	1.8	3.1
Percent Change	-24.1%	-14.3%	-27.9%

¹Rates per 1,000 live births

²Race of mother

Table 6.
Neonatal Mortality and Neonatal Mortality Rates¹
South Carolina and Each County, 2013, 2011-2013, 2008-2010
(Residence Data)

County of Residence	2013		2011-2013		2008-2010	
	Number	Rate	Number	Rate	Number	Rate
South Carolina	263	4.6	787	4.6	836	4.6
Abbeville	2	7.7	10	12.7	7	8.6
Aiken	8	4.6	24	4.3	19	3.2
Allendale	-	0	2	6.6	1	2.6
Anderson	11	4.8	26	3.9	36	5.1
Bamberg	-	0	4	8.4	3	5.5
Barnwell	4	12.7	6	6.4	3	3.3
Beaufort	4	1.9	16	2.6	19	2.8
Berkeley	12	4.6	31	4.0	30	3.9
Calhoun	-	0	2	4.5	2	4.0
Charleston	15	3.1	50	3.5	60	4.0
Cherokee	1	1.6	7	3.5	9	4.3
Chester	2	5.4	5	4.1	3	2.4
Chesterfield	5	9.6	13	8.4	21	12.6
Clarendon	4	11.4	7	6.7	3	2.6
Colleton	1	2.3	13	9.6	5	3.3
Darlington	2	2.6	10	4.2	20	8.1
Dillon	1	2.2	7	5.3	2	1.4
Dorchester	7	3.9	21	3.9	17	3.0
Edgefield	2	7.9	4	6.5	2	3.0
Fairfield	-	0	5	7.0	4	5.3
Florence	18	10.5	50	9.3	39	6.9
Georgetown	4	6.5	11	6.1	15	7.4
Greenville	27	4.5	69	3.8	86	4.5
Greenwood	7	7.8	21	7.8	19	6.6
Hampton	2	8.9	2	3.0	6	7.2
Horry	10	3.2	37	4.0	59	6.2
Jasper	1	3.2	5	5.2	5	4.6
Kershaw	5	7.6	8	3.8	6	2.5
Lancaster	4	4.4	13	4.8	15	5.4
Laurens	7	9.6	12	5.2	13	5.1
Lee	-	0	3	5.4	2	3.1
Lexington	13	4.0	42	4.3	27	2.6
McCormick	-	0	3	20.3	2	8.1
Marion	2	5.0	12	10.0	22	15.9
Marlboro	2	6.5	11	11.9	7	6.9
Newberry	3	6.6	5	3.8	2	1.3
Oconee	4	5.7	9	3.8	12	4.8
Orangeburg	7	6.2	22	6.5	32	8.1
Pickens	6	5.2	23	6.4	15	4.0
Richland	27	5.6	79	5.4	51	3.4
Saluda	1	4.7	5	6.9	6	7.8
Spartanburg	7	2.0	18	1.7	55	4.7
Sumter	4	2.6	13	2.8	24	5.0
Union	1	3.2	2	2.2	3	2.9
Williamsburg	1	3.2	11	10.8	8	6.5
York	19	6.6	38	4.4	38	4.2

¹Rates per 1,000 live births. Rates calculated with 20 or fewer deaths are unreliable and should be used cautiously.

Table 6-A.
White¹ Neonatal Mortality and Neonatal Mortality Rates²
South Carolina and Each County, 2013, 2011-2013, 2008-2010
(Residence Data)

County of Residence	2013		2011-2013		2008-2010	
	Number	Rate	Number	Rate	Number	Rate
South Carolina	138	3.7	360	3.2	390	3.3
Abbeville	2	11.4	6	11.5	1	1.9
Aiken	2	1.7	11	3.0	7	1.8
Allendale	-	0	-	0	-	0
Anderson	9	5.0	17	3.2	21	3.8
Bamberg	-	0	1	6.5	-	0
Barnwell	1	7.3	1	2.3	1	2.4
Beaufort	2	1.3	8	1.8	10	2.1
Berkeley	4	2.1	7	1.2	19	3.4
Calhoun	-	0	-	0	2	7.8
Charleston	8	2.6	25	2.7	25	2.7
Cherokee	1	2.1	6	4.0	5	3.2
Chester	1	5.0	2	3.0	1	1.5
Chesterfield	4	12.7	6	6.7	9	9.1
Clarendon	-	0	-	0	1	2.1
Colleton	-	0	3	4.3	2	2.4
Darlington	-	0	3	2.5	7	5.8
Dillon	-	0	-	0	-	0
Dorchester	4	3.1	7	1.9	10	2.6
Edgefield	-	0	-	0	-	0
Fairfield	-	0	1	4.3	2	9.0
Florence	4	4.9	10	3.9	12	4.5
Georgetown	3	8.8	4	4.2	2	1.9
Greenville	17	3.7	47	3.4	47	3.2
Greenwood	3	5.6	10	6.2	11	6.2
Hampton	1	10.8	1	4.0	-	0
Horry	5	2.0	27	3.7	39	5.1
Jasper	1	6.4	4	7.8	2	3.2
Kershaw	4	8.6	5	3.3	5	3.0
Lancaster	3	4.6	8	4.2	7	3.6
Laurens	4	7.9	8	5.0	7	4.0
Lee	-	0	-	0	-	0
Lexington	11	4.3	27	3.5	17	2.0
McCormick	-	0	-	0	-	0
Marion	-	0	-	0	4	8.8
Marlboro	-	0	2	5.7	3	8.6
Newberry	1	3.7	1	1.3	2	2.1
Oconee	3	4.6	6	2.8	12	5.3
Orangeburg	1	3.0	4	4.1	5	4.3
Pickens	6	5.7	21	6.5	12	3.6
Richland	9	4.5	21	3.4	12	1.9
Saluda	-	0	3	5.4	3	5.4
Spartanburg	5	1.9	9	1.2	31	3.7
Sumter	2	2.7	5	2.3	8	3.6
Union	1	4.9	2	3.4	2	3.1
Williamsburg	-	0	3	8.9	-	0
York	16	7.7	28	4.4	23	3.4

¹Race of mother

²Rates per 1,000 live births. Rates calculated with 20 or fewer deaths are unreliable and should be used cautiously.

Table 6-B.

Black and Other¹ Neonatal Mortality and Neonatal Mortality Rates²
 South Carolina and Each County, 2013, 2011-2013, 2008-2010
 (Residence Data)

County of Residence	2013		2011-2013		2008-2010	
	Number	Rate	Number	Rate	Number	Rate
South Carolina	125	6.4	427	7.2	445	7.0
Abbeville	-	0	4	15.0	6	21.4
Aiken	6	10.7	13	7.2	12	6.1
Allendale	-	0	2	8.1	1	3.2
Anderson	2	4.2	9	6.2	15	10.1
Bamberg	-	0	3	9.3	3	8.0
Barnwell	3	16.9	5	9.8	2	4.1
Beaufort	2	3.5	8	4.8	9	4.8
Berkeley	8	11.5	24	11.4	11	5.1
Calhoun	-	0	2	10.1	-	0
Charleston	7	4.3	25	5.0	35	6.0
Cherokee	-	0	1	1.9	4	7.0
Chester	1	5.7	3	5.4	2	3.3
Chesterfield	1	4.8	7	10.7	12	17.8
Clarendon	4	20.7	7	11.8	2	3.0
Colleton	1	4.8	10	15.4	3	4.3
Darlington	2	5.4	7	5.9	13	10.3
Dillon	1	3.8	7	9.0	2	2.4
Dorchester	3	5.6	14	8.7	7	4.2
Edgefield	2	17.5	4	13.0	2	6.0
Fairfield	-	0	4	8.4	2	3.8
Florence	14	15.5	40	14.3	27	9.1
Georgetown	1	3.7	7	8.3	13	13.9
Greenville	10	6.9	22	5.0	39	8.5
Greenwood	4	11.1	11	10.4	8	7.4
Hampton	1	7.6	1	2.4	6	12.7
Horry	5	7.6	10	5.1	20	10.4
Jasper	-	0	1	2.2	3	6.3
Kershaw	1	5.2	3	5.2	1	1.4
Lancaster	1	3.8	5	6.5	8	9.6
Laurens	3	13.5	4	5.8	6	7.4
Lee	-	0	3	7.5	2	4.0
Lexington	2	3.0	15	7.6	10	5.0
McCormick	-	0	3	31.3	2	12.2
Marion	2	7.4	12	14.6	18	19.3
Marlboro	2	10.1	9	15.6	4	6.0
Newberry	2	10.9	4	7.7	-	0
Oconee	1	17.9	3	13.3	-	0
Orangeburg	6	7.6	18	7.5	26	9.3
Pickens	-	0	2	6.1	3	8.4
Richland	18	6.5	58	6.9	39	4.5
Saluda	1	22.2	2	11.5	3	14.2
Spartanburg	2	2.2	9	3.2	24	7.6
Sumter	2	2.6	8	3.3	16	6.2
Union	-	0	-	0	1	2.7
Williamsburg	1	5.0	8	11.8	8	8.8
York	3	3.7	10	4.2	15	6.5

¹Race of mother

²Rates per 1,000 live births. Rates calculated with 20 or fewer deaths are unreliable and should be used cautiously.

Table 7.
Postneonatal Mortality and Postneonatal Mortality Rates¹
South Carolina and Each County, 2013, 2011-2013, 2008-2010
(Residence Data)

County of Residence	2013		2011-2013		2008-2010	
	Number	Rate	Number	Rate	Number	Rate
South Carolina	126	2.2	460	2.7	528	2.9
Abbeville	-	0	2	2.5	3	3.7
Aiken	3	1.7	11	2.0	17	2.9
Allendale	-	0	-	0	2	5.2
Anderson	7	3.1	28	4.2	15	2.1
Bamberg	-	0	-	0	2	3.6
Barnwell	1	3.2	4	4.3	1	1.1
Beaufort	1	0.5	9	1.5	7	1.0
Berkeley	5	1.9	23	3.0	19	2.4
Calhoun	-	0	-	0	1	2.0
Charleston	4	0.8	28	2.0	45	3.0
Cherokee	4	6.3	8	4.0	10	4.7
Chester	1	2.7	3	2.4	3	2.4
Chesterfield	3	5.7	7	4.5	7	4.2
Clarendon	1	2.9	5	4.8	1	0.9
Colleton	-	0	5	3.7	6	3.9
Darlington	3	4.0	13	5.5	11	4.4
Dillon	1	2.2	3	2.3	3	2.1
Dorchester	2	1.1	10	1.9	11	2.0
Edgefield	-	0	1	1.6	-	0
Fairfield	-	0	2	2.8	1	1.3
Florence	3	1.7	26	4.8	23	4.1
Georgetown	1	1.6	5	2.8	6	3.0
Greenville	10	1.7	40	2.2	46	2.4
Greenwood	-	0	4	1.5	8	2.8
Hampton	1	4.4	2	3.0	-	0
Horry	9	2.8	28	3.0	22	2.3
Jasper	-	0	1	1.0	4	3.6
Kershaw	3	4.5	7	3.3	6	2.5
Lancaster	1	1.1	6	2.2	7	2.5
Laurens	3	4.1	6	2.6	8	3.1
Lee	1	5.2	2	3.6	3	4.6
Lexington	2	0.6	21	2.2	34	3.3
McCormick	1	25.0	2	13.5	-	0
Marion	-	0	2	1.7	9	6.5
Marlboro	-	0	-	0	3	3.0
Newberry	-	0	3	2.3	5	3.3
Oconee	1	1.4	4	1.7	6	2.4
Orangeburg	9	8.0	16	4.7	20	5.1
Pickens	3	2.6	7	2.0	11	3.0
Richland	18	3.8	46	3.2	38	2.5
Saluda	-	0	2	2.8	5	6.5
Spartanburg	10	2.9	27	2.5	37	3.2
Sumter	2	1.3	13	2.8	18	3.7
Union	1	3.2	3	3.3	5	4.9
Williamsburg	2	6.4	4	3.9	6	4.9
York	9	3.1	21	2.4	33	3.7

¹Rates per 1,000 live births. Rates calculated with 20 or fewer deaths are unreliable and should be used cautiously.

Table 7-A.

White¹ Postneonatal Mortality and Postneonatal Mortality Rates²
 South Carolina and Each County, 2013, 2011-2013, 2008-2010
 (Residence Data)

County of Residence	2013		2011-2013		2008-2010	
	Number	Rate	Number	Rate	Number	Rate
South Carolina	66	1.8	229	2.1	272	2.3
Abbeville	-	0	2	3.8	1	1.9
Aiken	2	1.7	6	1.6	9	2.3
Allendale	-	0	-	0	-	0
Anderson	4	2.2	17	3.2	10	1.8
Bamberg	-	0	-	0	1	5.7
Barnwell	-	0	-	0	-	0
Beaufort	1	0.7	7	1.6	4	0.8
Berkeley	5	2.6	15	2.7	12	2.1
Calhoun	-	0	-	0	1	3.9
Charleston	-	0	12	1.3	19	2.1
Cherokee	3	6.3	6	4.0	8	5.2
Chester	1	5.0	2	3.0	3	4.5
Chesterfield	2	6.4	4	4.5	5	5.1
Clarendon	-	0	2	4.4	1	2.1
Colleton	-	0	1	1.4	2	2.4
Darlington	1	2.6	4	3.4	6	5.0
Dillon	-	0	1	1.9	1	1.7
Dorchester	1	0.8	6	1.6	7	1.8
Edgefield	-	0	1	3.3	-	0
Fairfield	-	0	-	0	1	4.5
Florence	2	2.5	11	4.3	7	2.6
Georgetown	1	2.9	2	2.1	1	0.9
Greenville	6	1.3	19	1.4	23	1.6
Greenwood	-	0	2	1.2	3	1.7
Hampton	-	0	1	4.0	-	0
Horry	5	2.0	14	1.9	14	1.8
Jasper	-	0	-	0	1	1.6
Kershaw	2	4.3	4	2.6	6	3.6
Lancaster	1	1.5	3	1.6	3	1.6
Laurens	2	4.0	4	2.5	8	4.6
Lee	-	0	-	0	1	6.4
Lexington	1	0.4	13	1.7	22	2.6
McCormick	-	0	-	0	-	0
Marion	-	0	1	2.6	3	6.6
Marlboro	-	0	-	0	-	0
Newberry	-	0	1	1.3	3	3.1
Oconee	1	1.5	4	1.9	6	2.7
Orangeburg	3	9.1	5	5.1	3	2.6
Pickens	3	2.8	7	2.2	11	3.3
Richland	3	1.5	10	1.6	5	0.8
Saluda	-	0	1	1.8	3	5.4
Spartanburg	8	3.1	22	2.8	25	3.0
Sumter	-	0	3	1.4	6	2.7
Union	1	4.9	2	3.4	3	4.6
Williamsburg	-	0	1	3.0	1	3.0
York	7	3.4	13	2.1	23	3.4

¹Race of mother

²Rates per 1,000 live births. Rates calculated with 20 or fewer deaths are unreliable and should be used cautiously.

Table 7-B.

Black and Other¹ Postneonatal Mortality and Postneonatal Mortality Rates²
 South Carolina and Each County, 2013, 2011-2013, 2008-2010
 (Residence Data)

County of Residence	2013		2011-2013		2008-2010	
	Number	Rate	Number	Rate	Number	Rate
South Carolina	60	3.1	231	3.9	256	4.0
Abbeville	-	0	-	0	2	7.1
Aiken	1	1.8	5	2.8	8	4.1
Allendale	-	0	-	0	2	6.3
Anderson	3	6.3	11	7.6	5	3.4
Bamberg	-	0	-	0	1	2.7
Barnwell	1	5.6	4	7.8	1	2.0
Beaufort	-	0	2	1.2	3	1.6
Berkeley	-	0	8	3.8	7	3.2
Calhoun	-	0	-	0	-	0
Charleston	4	2.5	16	3.2	26	4.5
Cherokee	1	6.1	2	3.7	2	3.5
Chester	-	0	1	1.8	-	0
Chesterfield	1	4.8	3	4.6	2	3.0
Clarendon	1	5.2	3	5.1	-	0
Colleton	-	0	4	6.1	4	5.7
Darlington	2	5.4	9	7.6	5	4.0
Dillon	1	3.8	2	2.6	2	2.4
Dorchester	1	1.9	4	2.5	4	2.4
Edgefield	-	0	-	0	-	0
Fairfield	-	0	2	4.2	-	0
Florence	1	1.1	15	5.4	16	5.4
Georgetown	-	0	3	3.5	5	5.3
Greenville	4	2.8	21	4.8	23	5.0
Greenwood	-	0	2	1.9	5	4.6
Hampton	1	7.6	1	2.4	-	0
Horry	4	6.1	14	7.2	8	4.2
Jasper	-	0	1	2.2	3	6.3
Kershaw	1	5.2	3	5.2	-	0
Lancaster	-	0	3	3.9	4	4.8
Laurens	1	4.5	2	2.9	-	0
Lee	1	7.2	2	5.0	2	4.0
Lexington	1	1.5	8	4.1	12	5.9
McCormick	1	35.7	2	21	-	0
Marion	-	0	1	1.2	6	6.4
Marlboro	-	0	-	0	3	4.5
Newberry	-	0	2	3.8	2	3.6
Oconee	-	0	-	0	-	0
Orangeburg	6	7.6	11	4.6	17	6.1
Pickens	-	0	-	0	-	0
Richland	15	5.4	36	4.3	33	3.8
Saluda	-	0	1	5.7	2	9.4
Spartanburg	2	2.2	5	1.8	12	3.8
Sumter	2	2.6	10	4.2	12	4.7
Union	-	0	1	3.2	2	5.4
Williamsburg	2	9.9	3	4.4	5	5.5
York	2	2.5	8	3.3	10	4.3

¹Race of mother

²Rates per 1,000 live births. Rates calculated with 20 or fewer deaths are unreliable and should be used cautiously.

Table 8.
Leading Causes of Infant Death by Age at Death
South Carolina, 2013
(Residence Data)

Cause of Infant Death (ICD-10 Codes)	Total	Under 1 Day	1-6 Days	7-27 Days	Neonatal (<28 days)	Post-Neonatal (28-364 days)
Total Infant Deaths	389	160	42	61	263	126
Disorders related to short gestation and low birthweight, NEC (P07)	76	67	3	3	73	3
Congenital malformations, deformations, etc. (Q00-Q99)	73	31	13	11	55	18
Sudden infant death syndrome (R95)	35	-	1	2	3	32
Accidents (V01-X59, Y85-Y86)	23	-	-	2	2	21
Fetus and newborn affected by maternal complications of pregnancy (P01)	20	20	-	-	20	-
Newborn affected by complication of placenta, etc. (P02)	12	11	-	1	12	-
Bacterial sepsis of newborn (P36)	11	1	3	7	11	-
Diseases of circulatory system (I00-I99)	9	-	-	-	-	9
Respiratory distress of newborn (P22)	9	2	4	3	9	-
Necrotizing enterocolitis of newborn (P77)	9	-	1	8	9	-
All other causes	112	28	17	24	69	43

Table 8a.
 Leading Causes of White¹ Infant Death by Age at Death
 South Carolina, 2013
 (Residence Data)

Cause of Infant Death (ICD-10 Codes)	Total	Under 1 Day	1-6 Days	7-27 Days	Neonatal (<28 days)	Post-Neonatal (28-364 days)
Total White Infant Deaths	192	80	21	32	133	59
Congenital malformations, deformations, etc. (Q00-Q99)	46	20	9	7	36	10
Disorders related to short gestation and low birthweight, NEC (P07)	28	23	1	3	27	1
Sudden infant death syndrome (R95)	19	-	1	1	2	17
Accidents (V01-X59, Y85-Y86)	14	-	-	1	1	13
Fetus and newborn affected by maternal complications of pregnancy (P01)	10	10	-	-	10	-
Newborn affected by complication of placenta, etc. (P02)	8	7	-	1	8	-
Bacterial sepsis of newborn (P36)	6	1	-	5	6	-
Hydrops fetalis (P38.2)	5	3	1	1	5	-
Atelectasis (P28.0-P28.1)	4	3	-	1	4	-
Necrotizing enterocolitis of newborn (P77)	4	-	-	4	4	-
All other causes	48	13	9	8	30	18

¹ Race of child

Table 8b.
Leading Causes of Black and Other¹ Infant Death by Age at Death
South Carolina, 2013
(Residence Data)

Cause of Infant Death (ICD-10 Codes)	Total	Under 1 Day	1-6 Days	7-27 Days	Neonatal (<28 days)	Post-Neonatal (28-364 days)
Total Black and Other Infant Deaths	197	80	21	29	130	67
Disorders related to short gestation and low birthweight, NEC (P07)	48	44	2	-	46	2
Congenital malformations, deformations, etc. (Q00-Q99)	27	11	4	4	19	8
Sudden infant death syndrome (R95)	16	-	-	1	1	15
Fetus and newborn affected by maternal complications of pregnancy (P01)	10	10	-	-	10	-
Accidents (V01-X59, Y85-Y86)	9	-	-	1	1	8
Respiratory distress of newborn (P22)	7	2	3	2	7	-
Diseases of circulatory system (I00-I99)	6	-	-	-	-	6
Bacterial sepsis of newborn (P36)	5	-	3	2	5	-
Necrotizing enterocolitis of newborn (P77)	5	-	1	4	5	-
Assault (Homicide) (X85-Y09,Y87.1)	5	-	-	1	1	4
All other causes	64	13	8	14	35	24

¹ Race of child

Table 8c.
 Percent Changes of Leading Causes of Infant Death
 from 2012 to 2013, South Carolina

Cause of Infant Death Ranked by 2013 Data (ICD-10 Codes)	2012	2013	% Change
Total Infant Deaths	435	389	-10.6%
Disorders related to short gestation and low birthweight, NEC (P07)	65	76	16.9%
Congenital malformations, deformations, etc. (Q00-Q99)	72	73	1.4%
Sudden infant death syndrome (R95)	33	35	6.1%
Accidents (V01-X59, Y85-Y86)	41	23	-43.9%
Fetus and newborn affected by maternal complications of pregnancy (P01)	22	20	-9.1%
Newborn affected by complication of placenta, etc. (P02)	21	12	-42.9%
Bacterial sepsis of newborn (P36)	12	11	-8.3%
Diseases of circulatory system (I00-I99)	12	9	-25.0%
Respiratory distress of newborn (P22)	18	9	-50.0%
Necrotizing enterocolitis of newborn (P77)	9	9	0.0%
All other causes	130	112	-13.8%

Table 9.
 Breakdown of Infant Deaths due to Accidents
 South Carolina, 2007-2013
 (Residence Data)

	2007	2008	2009	2010	2011	2012	2013	Total (2007-2013)
Accidental suffocation and strangulation in bed (W75, W84)	34	37	22	25	21	39	21	199
Other accidental threats to breathing	2	2	3	2	2	0	2	13
Transportation	3	1	5	1	3	1	0	14
Drowning	0	0	0	0	1	0	0	1
Poison	1	0	1	0	1	0	0	3
Other accidents	3	1	2	4	2	1	0	13

Table 10.
 Breakdown of Sudden Unexplained Infant Deaths
 South Carolina, 2007-2013
 (Residence Data)

	2007	2008	2009	2010	2011	2012	2013	Total (2007-2013)
Accidental suffocation and strangulation in bed (W75, W84)	34	37	22	25	21	39	21	199
Sudden Infant Death Syndrom (R95)	46	57	44	49	45	33	35	309
Hanging, strangulation, and suffocation, undetermined intent (Y20)	2	4	5	4	2	1	9	27
Other ill-defined and unspecified causes of mortality (R99)	10	5	8	8	10	12	6	59

Table 11.
Leading Causes of Infant Death and Mortality Rates*,
South Carolina, 2011-2013
(Residence Data)

Table 11. South Carolina Infant Death, Resident Data, 2011-2013, All races

Rank	Cause of death	Number	Mortality rate*
Total Infant Deaths.....	1247	7.3
1	Congenital malformations, deformations, etc. (Q00-Q99).....	221	1.3
2	Disorders related to short gestation and low birthweight (P07).....	204	1.2
3	Sudden infant death syndrome (R95).....	113	0.7
4	Accidents (V01-X59, Y85-Y86).....	94	0.5
5	Fetus and newborn affected by maternal complications of pregnancy (P01)...	71	0.4
6	Newborn affected by complications of placenta, etc. (P02).....	53	0.3
7	Respiratory distress of newborn (P22).....	41	0.2
8	Disease of circulatory system (I00-I99).....	38	0.2
9	Bacterial sepsis of newborn (P36).....	33	0.2
10	Necrotizing enterocolitis of newborn (P77).....	27	0.2
All Other Causes.....	352	2.1

Table 11-A. South Carolina Infant death, Resident Data, 2011-2013, White

Rank	Cause of death	Number	Mortality rate*
All White Infant Deaths.....	573	5.1
1	Congenital malformations, deformations, etc. (Q00-Q99).....	124	1.1
2	Disorders related to short gestation and low birthweight (P07).....	78	0.7
3	Accidents (V01-X59, Y85-Y86).....	53	0.5
4	Sudden infant death syndrome (R95).....	52	0.5
5	Newborn affected by complications of placenta, etc. (P02).....	25	0.2
6	Fetus and newborn affected by maternal complications of pregnancy (P01)...	18	0.2
7	Disease of circulatory system (I00-I99).....	16	0.1
8	Intrauterine hypoxia and birth asphyxia (P20-P21).....	13	0.1
9	Respiratory distress of newborn (P22).....	13	0.1
10	Bacterial sepsis of newborn (P36).....	13	0.1
All Other Causes.....	168	1.5

Table 11-B. South Carolina Infant death, Resident Data, 2011-2013, Black and Others

Rank	Cause of death	Number	Mortality rate*
All Black And Other Infant Deaths.....	674	11.4
1	Disorders related to short gestation and low birthweight (P07).....	126	2.1
2	Congenital malformations, deformations, etc. (Q00-Q99).....	97	1.6
3	Sudden infant death syndrome (R95).....	61	1.0
4	Fetus and newborn affected by maternal complications of pregnancy (P01)...	53	0.9
5	Accidents (V01-X59, Y85-Y86).....	41	0.7
6	Newborn affected by complications of placenta, etc. (P02).....	28	0.5
7	Respiratory distress of newborn (P22).....	28	0.5
8	Disease of circulatory system (I00-I99).....	22	0.4
9	Bacterial sepsis of newborn (P36).....	20	0.3
10	Necrotizing enterocolitis of newborn (P77).....	17	0.3
All Other Causes.....	181	3.0

* Rates are per 1,000 live births.

Table 12.

Comparison of Characteristics for All Live Births, by Race¹
 Z-tests for differences in proportions³
 South Carolina, 2012 to 2013
 (Residence Data)

	2012		2013		Z-TEST	P-VALUE
	Percent	Number	Percent	Number		

MOTHER < 18 YEARS						
TOTAL ²	2.73	1,560	2.31	1,313	-4.4972	0.0000
White	2.19	811	1.89	704	-2.8225	0.0048
Black & Other	3.74	747	3.12	608	-3.4196	0.0006

MARITAL STATUS: UNMARRIED						
TOTAL ²	47.78	27,285	47.15	26,754	-2.1458	0.0319
White	34.02	12,617	33.19	12,340	-2.3737	0.0176
Black & Other	73.40	14,650	73.80	14,401	0.9050	0.3655

OBESE PRIOR TO PREGNANCY						
TOTAL ²	27.32	15,601	27.76	15,751	1.6475	0.0995
White	22.86	8,478	22.81	8,480	-0.1522	0.8790
Black & Other	35.65	7,115	37.22	7,262	3.2369	0.0012

TOBACCO USE DURING PREGNANCY						
TOTAL ²	11.26	6,429	10.91	6,190	-1.8827	0.0597
White	13.49	5,004	12.91	4,801	-2.3221	0.0202
Black & Other	7.12	1,422	7.09	1,384	-0.1233	0.9019

HISPANIC MOTHER						
TOTAL ²	8.14	4,649	7.68	4,360	-2.8628	0.0042
White	11.66	4,324	11.01	4,095	-2.7620	0.0057
Black & Other	1.63	325	1.36	265	-2.2124	0.0269

VERY LOW BIRTHWEIGHT						
TOTAL ²	1.79	1,023	1.88	1,069	1.1599	0.2461
White	1.14	422	1.27	473	1.6807	0.0928
Black & Other	3.01	600	3.04	594	0.2202	0.8257

LOW BIRTHWEIGHT						
TOTAL ²	9.55	5,453	9.69	5,498	0.7975	0.4252
White	7.23	2,683	7.49	2,785	1.3452	0.1786
Black & Other	13.87	2,768	13.87	2,706	-0.0022	0.9983

¹Race of mother

²Includes unknown races

³Proportions are expressed as percentages

Table 12. (continued)
 Comparison of Characteristics for All Live Births, by Race¹
 Z-tests for differences in proportions³
 South Carolina, 2012 to 2013
 (Residence Data)

	2012		2013		Z-TEST	P-VALUE
	Percent	Number	Percent	Number		

PREMATURE BIRTHS (< 37 WEEKS)						
TOTAL ²	11.25	6,425	11.13	6,317	-0.6396	0.5224
White	9.82	3,642	9.66	3,591	-0.7336	0.4632
Black & Other	13.92	2,779	13.93	2,718	0.0162	0.9871

VERY PREMATURE BIRTHS (< 32 WEEKS)						
TOTAL ²	1.99	1,134	2.09	1,185	1.2226	0.2215
White	1.37	507	1.49	553	1.3855	0.1659
Black & Other	3.14	626	3.23	630	0.5217	0.6019

PREMATURE 32-36 WEEKS BIRTHS						
TOTAL ²	9.27	5,291	9.04	5,132	-1.2981	0.1943
White	8.45	3,135	8.17	3,038	-1.3832	0.1666
Black & Other	10.79	2,153	10.70	2,088	-0.2776	0.7813

KOTELCHUCK INDEX: ADEQUATE, ADEQUATE PLUS						
TOTAL ²	74.54	42,561	74.45	42,245	-0.3404	0.7336
White	77.25	28,653	76.92	28,596	-1.0697	0.2848
Black & Other	69.56	13,884	69.82	13,624	0.5566	0.5778

KOTELCHUCK INDEX: INADEQUATE						
TOTAL ²	18.03	10,295	18.40	10,438	1.5974	0.1102
White	15.20	5,638	15.71	5,839	1.9071	0.0565
Black & Other	23.27	4,645	23.50	4,585	0.5267	0.5984

< 5 PRENATAL CARE VISITS						
TOTAL ²	5.14	2,935	5.03	2,854	-0.8478	0.3965
White	4.05	1,501	4.06	1,511	0.1219	0.9030
Black & Other	7.16	1,430	6.85	1,337	-1.2171	0.2236

PRENATAL CARE BEGAN FIRST TRIMESTER						
TOTAL ²	71.87	41,040	70.02	39,733	-6.8790	0.0000
White	75.39	27,963	73.08	27,168	-7.1994	0.0000
Black & Other	65.40	13,054	64.28	12,543	-2.3382	0.0194

¹Race of mother

²Includes unknown races

³Proportions are expressed as percentages

Table 12-A.

Comparison of Characteristics of Infants who Died, by Race¹
 Z-tests for differences in proportions³
 South Carolina, 2012 to 2013
 (Residence Data)

	2012		2013		Z-TEST	P-VALUE
	Percent	Number	Percent	Number		

MOTHER < 18 YEARS						
TOTAL ²	3.91	17	3.34	13	-0.4332	0.6649
White	4.57	9	4.41	9	-0.0758	0.9396
Black & Other	3.36	8	2.16	4	-0.7369	0.4612

MARITAL STATUS: UNMARRIED						
TOTAL ²	63.91	278	58.61	228	-1.5591	0.1190
White	47.21	93	45.59	93	-0.3252	0.7450
Black & Other	77.73	185	72.97	135	-1.1311	0.2580

OBESE PRIOR TO PREGNANCY						
TOTAL ²	35.86	156	33.16	129	-0.8135	0.4159
White	25.38	50	27.94	57	0.5795	0.5622
Black & Other	44.54	106	38.92	72	-1.1612	0.2456

TOBACCO USE DURING PREGNANCY						
TOTAL ²	16.55	72	17.48	68	0.3545	0.7230
White	24.87	49	24.02	49	-0.1988	0.8424
Black & Other	9.66	23	10.27	19	0.2069	0.8361

HISPANIC MOTHER						
TOTAL ²	3.68	16	6.43	25	1.8114	0.0701
White	7.61	15	11.27	23	1.2511	0.2109
Black & Other	0.42	1	1.08	2	0.8035	0.4217

VERY LOW BIRTHWEIGHT						
TOTAL ²	52.64	229	54.50	212	0.5330	0.5940
White	42.13	83	48.04	98	1.1884	0.2347
Black & Other	61.34	146	61.62	114	0.0581	0.9537

LOW BIRTHWEIGHT						
TOTAL ²	64.83	282	70.69	275	1.7963	0.0724
White	56.85	112	65.20	133	1.7132	0.0867
Black & Other	71.43	170	76.76	142	1.2356	0.2166

¹Race of mother

²Includes unknown races

³Proportions are expressed as percentages

Table 12-A. (continued)
 Comparison of Characteristics of Infants who Died, by Race¹
 Z-tests for differences in proportions³
 South Carolina, 2012 to 2013
 (Residence Data)

	2012		2013		Z-TEST	P-VALUE
	Percent	Number	Percent	Number		

PREMATURE BIRTHS (< 37 WEEKS)						
TOTAL ²	65.52	285	70.44	274	1.5094	0.1312
White	56.85	112	66.67	136	2.0225	0.0431
Black & Other	72.69	173	74.59	138	0.4406	0.6595

VERY PREMATURE BIRTHS (< 32 WEEKS)						
TOTAL ²	54.02	235	56.04	218	0.5813	0.5610
White	44.16	87	50.00	102	1.1707	0.2417
Black & Other	62.18	148	62.70	116	0.1091	0.9131

PREMATURE 32-36 WEEKS BIRTHS						
TOTAL ²	11.49	50	14.40	56	1.2420	0.2142
White	12.69	25	16.67	34	1.1237	0.2611
Black & Other	10.50	25	11.89	22	0.4505	0.6524

KOTELCHUCK INDEX: ADEQUATE, ADEQUATE PLUS						
TOTAL ²	71.03	309	66.32	258	-1.4571	0.1451
White	74.11	146	63.73	130	-2.2447	0.0248
Black & Other	68.49	163	69.19	128	0.1545	0.8772

KOTELCHUCK INDEX: INADEQUATE						
TOTAL ²	20.46	89	23.14	90	0.9301	0.3523
White	16.24	32	25.49	52	2.2747	0.0229
Black & Other	23.95	57	20.54	38	-0.8334	0.4046

< 5 PRENATAL CARE VISITS						
TOTAL ²	22.76	99	26.48	103	1.2391	0.2153
White	17.77	35	24.02	49	1.5383	0.1240
Black & Other	26.89	64	29.19	54	0.5229	0.6011

PRENATAL CARE BEGAN FIRST TRIMESTER						
TOTAL ²	64.37	280	59.38	231	-1.4718	0.1411
White	69.54	137	60.78	124	-1.8394	0.0659
Black & Other	60.08	143	57.84	107	-0.4661	0.6411

¹Race of mother

²Includes unknown races

³Proportions are expressed as percentages

Table 13.
Multiple Births Trends,
South Carolina, 2009-2013
(Residence Data)

Year	Singleton Births	Singleton Deaths	Infant Mortality Rate*	Twin Births***	Twin Deaths	Infant Mortality Rate*	Higher Order (3+) Births	Higher Order (3+) Deaths	Infant Mortality Rate*	Total Births**	Total Deaths**	Infant Mortality Rate*
2009	58,515	377	6.4	2,072	48	23.2	95	4	42.1	60,682	430	7.1
2010	56,393	382	6.8	1,867	43	23.0	65	5	76.9	58,325	430	7.4
2011	55,343	358	6.5	1,915	65	33.9	80	0	0.0	57,338	423	7.4
2012	55,122	380	6.9	1,918	54	28.2	58	1	17.2	57,100	435	7.6
2013	54,668	326	6.0	2,003	55	27.5	72	6	83.3	56,743	389	6.9
Total	280,041	1,823	6.5	9,775	265	27.1	370	16	43.2	290,188	2,107	7.3

* Rates are per 1,000 births. Rates calculated with 20 or fewer deaths are unreliable and should be used cautiously

** Includes Unknown Birth Number

*** Twin births do not include twin fetal deaths

Table 14.
 Infant Mortality Rates¹ by Race² and Birthweight³ Group
 South Carolina
 2011, 2012, and 2013
 (Residence Data)

Infant Mortality for Very Low Birthweight (0-1499 grams)									
	Total			White			Black & Other		
Year	Number of Live Birth	Number of Infant Death	Rate	Number of Live Birth	Number of Infant Death	Rate	Number of Live Birth	Number of Infant Death	Rate
2011	1,064	228	214.3	470	83	176.6	594	145	244.1
2012	1,023*	229	223.9	422	83	196.7	600	146	243.3
2013	1,069*	212	198.3	473	98	207.2	594	114	191.9

Infant Mortality for Intermediate Low Birthweight (1500-2499 grams)									
	Total			White			Black & Other		
Year	Number of Live Birth	Number of Infant Death	Rate	Number of Live Birth	Number of Infant Death	Rate	Number of Live Birth	Number of Infant Death	Rate
2011	4,590*	57	12.4	2,336	34	14.6	2,252	23	10.2
2012	4,430*	53	12.0	2,261	29	12.8	2,168	24	11.1
2013	4,429*	63	14.2	2,312	35	15.1	2,112	28	13.3

Infant Mortality for Normal Birthweight (2500+ grams)									
	Total			White			Black & Other		
Year	Number of Live Birth	Number of Infant Death	Rate	Number of Live Birth	Number of Infant Death	Rate	Number of Live Birth	Number of Infant Death	Rate
2011	51,651*	136	2.6	34,583	70	2.0	17,034	66	3.9
2012	51,608*	151	2.9	34,392	84	2.4	17,174	67	3.9
2013	51,195*	110	2.1	34,364	70	2.0	16,788	40	2.4

¹Rates per 1,000 live births

²Race of mother

³Does not include missing birthweights

*Includes unknown race

Table 14-A.
 Neonatal Mortality Rates¹ by Race² and Birthweight³ Group
 South Carolina
 2011, 2012, and 2013
 (Residence Data)

Neonatal Mortality for Very Low Birthweight (0-1499 grams)									
	Total			White			Black & Other		
Year	Number of Live Birth	Number of Infant Death	Rate	Number of Live Birth	Number of Infant Death	Rate	Number of Live Birth	Number of Infant Death	Rate
2011	1,064	197	185.2	470	74	157.4	594	123	207.1
2012	1,023*	187	182.8	422	72	170.6	600	115	191.7
2013	1,069*	183	171.2	473	86	181.8	594	97	163.3

Neonatal Mortality for Intermediate Low Birthweight (1500-2499 grams)									
	Total			White			Black & Other		
Year	Number of Live Birth	Number of Infant Death	Rate	Number of Live Birth	Number of Infant Death	Rate	Number of Live Birth	Number of Infant Death	Rate
2011	4,590*	29	6.3	2,336	17	7.3	2,252	12	5.3
2012	4,430*	29	6.5	2,261	19	8.4	2,168	10	4.6
2013	4,429*	38	8.6	2,312	23	9.9	2,112	15	7.1

Neonatal Mortality for Normal Birthweight (2500+ grams)									
	Total			White			Black & Other		
Year	Number of Live Birth	Number of Infant Death	Rate	Number of Live Birth	Number of Infant Death	Rate	Number of Live Birth	Number of Infant Death	Rate
2011	51,651*	27	0.5	34,583	12	0.3	17,034	15	0.9
2012	51,608*	53	1.0	34,392	27	0.8	17,174	26	1.5
2013	51,195*	39	0.8	34,364	29	0.8	16,788	10	0.6

¹Rates per 1,000 live births

²Race of mother

³Does not include missing birthweights

*Includes unknown race

Table 14-B.
 Postneonatal Mortality Rates¹ by Race² and Birthweight³ Group
 South Carolina
 2011, 2012, and 2013
 (Residence Data)

Postneonatal Mortality for Very Low Birthweight (0-1499 grams)									
	Total			White			Black & Other		
Year	Number of Live Birth	Number of Infant Death	Rate	Number of Live Birth	Number of Infant Death	Rate	Number of Live Birth	Number of Infant Death	Rate
2011	1,064	31	29.1	470	9	19.1	594	22	37.0
2012	1,023*	42	41.1	422	11	26.1	600	31	51.7
2013	1,069*	29	27.1	473	12	25.4	594	17	28.6

Postneonatal Mortality for Intermediate Low Birthweight (1500-2499 grams)									
	Total			White			Black & Other		
Year	Number of Live Birth	Number of Infant Death	Rate	Number of Live Birth	Number of Infant Death	Rate	Number of Live Birth	Number of Infant Death	Rate
2011	4,590*	28	6.1	2,336	17	7.3	2,252	11	4.9
2012	4,430*	24	5.4	2,261	10	4.4	2,168	14	6.5
2013	4,429*	25	5.6	2,312	12	5.2	2,112	13	6.2

Postneonatal Mortality for Normal Birthweight (2500+ grams)									
	Total			White			Black & Other		
Year	Number of Live Birth	Number of Infant Death	Rate	Number of Live Birth	Number of Infant Death	Rate	Number of Live Birth	Number of Infant Death	Rate
2011	51,651*	109	2.1	34,583	58	1.7	17,034	51	3.0
2012	51,608*	98	1.9	34,392	57	1.7	17,174	41	2.4
2013	51,195*	71	1.4	34,364	41	1.2	16,788	30	1.8

¹Rates per 1,000 live births

²Race of mother

³Does not include missing birthweights

*Includes unknown race

Figure 1
Percentage of Infant Deaths by Birthweight Group
South Carolina, 2011-2013 Residence Data

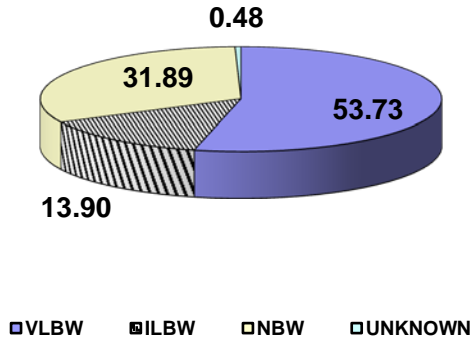


Figure 1-A
Percentage of White Infant Deaths by Birthweight Group
South Carolina, 2011-2013 Residence Data

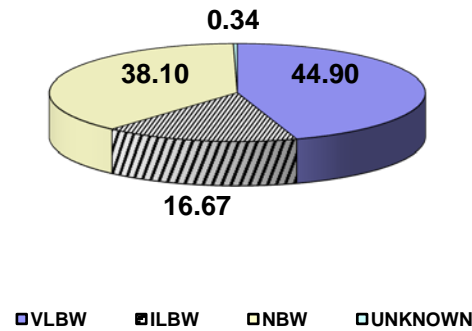


Figure 1-B
Percentage of Black and Other Infant Deaths by Birthweight Group
South Carolina, 2011-2013 Residence Data

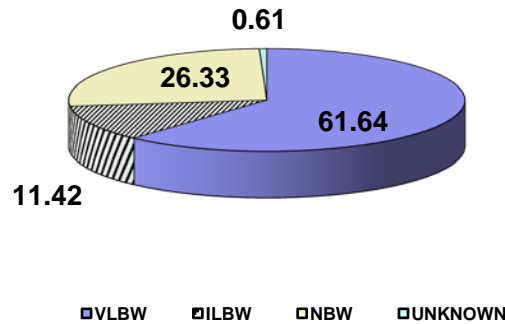
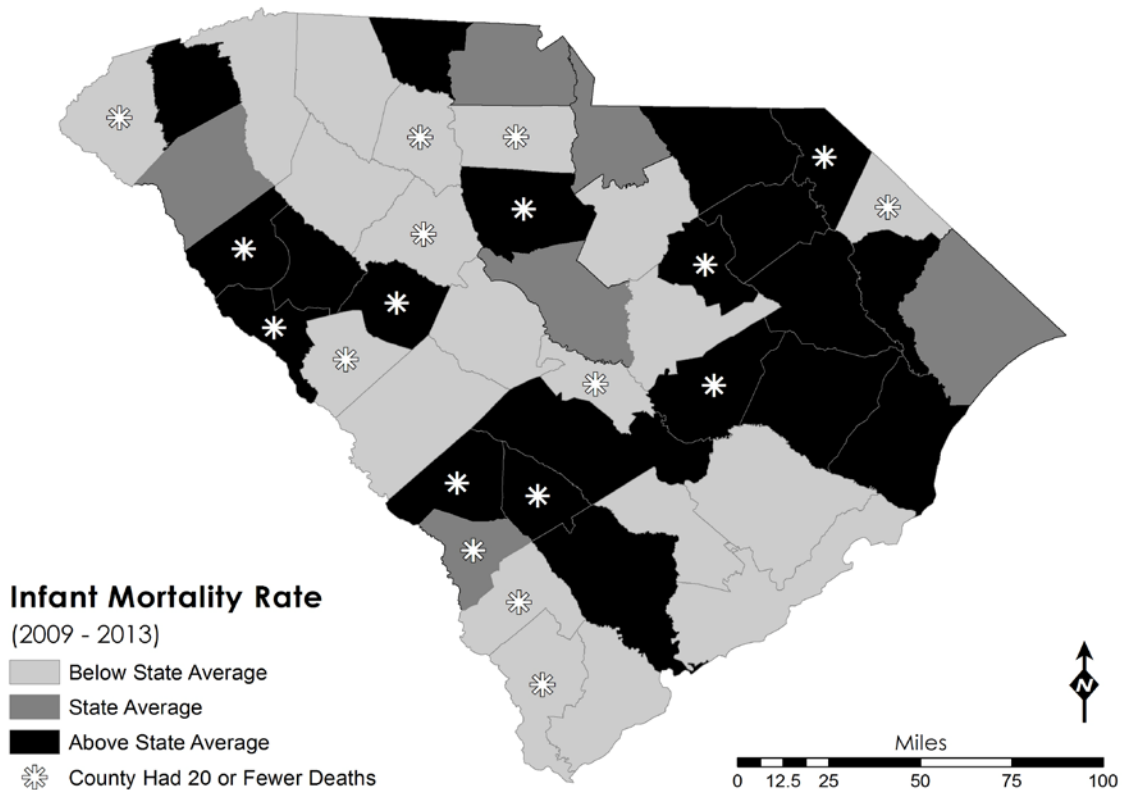


Figure 2.
Five Year Infant Mortality Rates by County
South Carolina
2009-2013
(Residence Data)



NOTE: Counties with rates calculated with 20 or fewer deaths are unreliable and should be used cautiously.

Above State Average indicates a rate greater than 7.6.
State Average indicates a rate between 7.0 and 7.6 inclusive.
Below State Average indicates a rate lower than 7.0.
Rate per 1,000 live births