

# Infant Mortality and Selected Birth Characteristics

---

2018 South Carolina Residence Data

**South Carolina Department of Health  
and Environmental Control**

**Vital Statistics**

2600 Bull Street  
Columbia, SC 29201

Phone: (803) 898-3649

Fax: (803) 898-3661



## Executive Summary

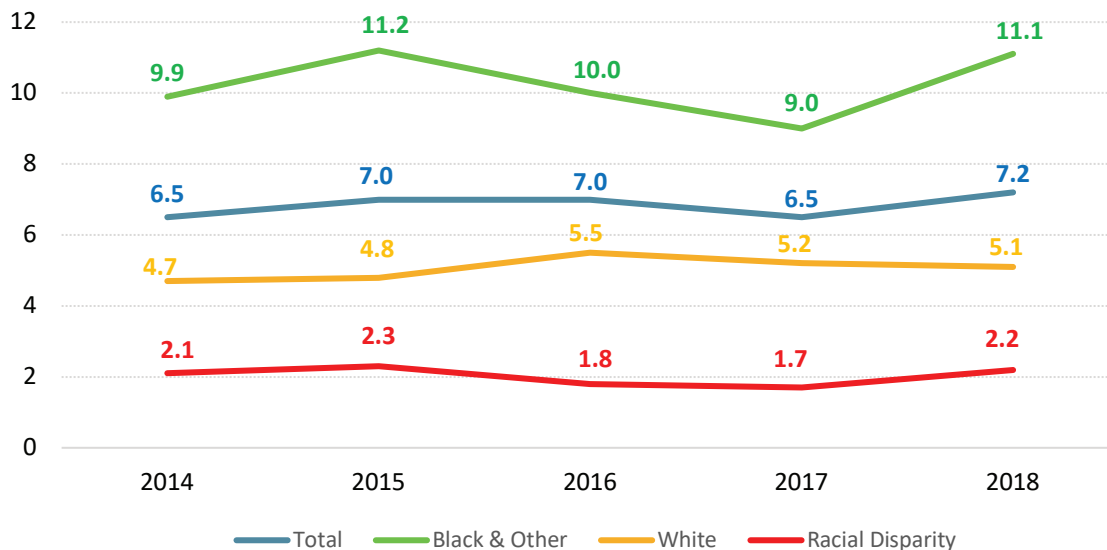
Infant mortality, defined as the death of a live-born baby before his or her first birthday, is a reflection of the overall state of a population's health. The infant mortality rate is the number of babies who died during the first year of life for every 1,000 live births. The South Carolina (SC) Department of Health and Environmental Control (DHEC) collects and monitors infant mortality data in an effort to improve the health of mothers and babies in our state. In 2018, there were 406 infants who died during the first year of life.

While the most recent national data shows that the US infant mortality rate in 2017 (5.8 per 1,000 live births)<sup>1</sup> surpassed the Healthy People (HP) 2020 Goal of no more than 6.0 infant deaths per 1,000 live births<sup>2</sup>, the SC infant mortality rate is still higher than the HP target. Moreover, the infant mortality rate increased 10.8% from 6.5 infant deaths per 1,000 live births in 2017 to 7.2 infant deaths per 1,000 live births in 2018.

The racial disparity remains a concern in SC and has not improved over the past 5 years (see Figure below). The infant mortality rate among the minority population increased 23.3% from 9.0 infant deaths per 1,000 live births in 2017 to 11.1 infant deaths per 1,000 live births in 2018 and was 2.2 times higher than in the white population (5.1 infant deaths per 1,000 live births in 2018).

### Trend in Infant Mortality, by Race: 2014-2018

Rate per 1,000 live births



Source: SC DHEC Vital Statistics

The 2018 infant mortality rates in both the neonatal (less than 28 days after birth) and postneonatal (28-364 days after birth) periods increased overall from 2017 to 2018 with notable increases seen among minority populations. Between 2017 and 2018, there was a 25.0% increase in the neonatal mortality rate in the minority population largely driven by a higher number of neonatal deaths from preterm birth and low birthweight causes (from 29 deaths in 2017 to 41 deaths in 2018). There was also a slight increase in the number of neonatal deaths due to birth defects (from 18 deaths in 2017 to 22 deaths in 2018). There was a 24.1% increase seen in the postneonatal mortality rate among the minority

population attributed to a higher number of deaths caused by accidents (from 11 deaths in 2017 to 20 deaths in 2018).

The top five leading causes of infant death overall in 2018 were birth defects, disorders related to short gestation and low birthweight, accidents, maternal complications of pregnancy, and bacterial sepsis. From 2017 to 2018, there was a 28.1% increase in the number of infant deaths from birth defects (from 64 deaths in 2017 to 82 deaths in 2018). The number of deaths due to preterm birth/low birthweight and accidents increased from 2017 to 2018 by 11.5% and 11.8%, respectively. However, the number of infant deaths due to maternal complications of pregnancy decreased 32.4%, from 34 deaths in 2017 to 23 in 2018.

Sudden unexpected infant death, or SUID, is defined as the sudden and unexpected death of a baby less than 1 year old in which the cause was not obvious before an investigation is conducted. Most of these deaths occur while the baby is sleeping or in his or her sleep area. Sudden unexpected infant deaths include sudden infant death syndrome (SIDS), accidental suffocation or strangulation in a sleeping environment, and deaths from unspecified or unknown causes. Although the number of SIDS deaths in SC decreased by half from 2017 (28 deaths) to 2018 (14 deaths), the number of deaths from accidental suffocation and strangulation in bed increased by 13.3%, from 30 deaths in 2017 to 34 deaths in 2018. The American Academy of Pediatrics updated their policy on safe sleeping in 2016, and DHEC has recently taken the lead on development of new, uniform safe sleep messaging to incorporate these recommendations as part of a SC Birth Outcomes Initiative directive. The new materials were distributed to SC hospitals and child care centers by early 2019.

DHEC is committed to improving the health of women and infants before, during, and after pregnancy. The agency continues to partner with organizations such as the SC Hospital Association, SC Department of Health and Human Services, and SC Chapter of the March of Dimes to explore and implement innovative strategies that promote improved pregnancy and health outcomes for mothers, babies, and families in our state.

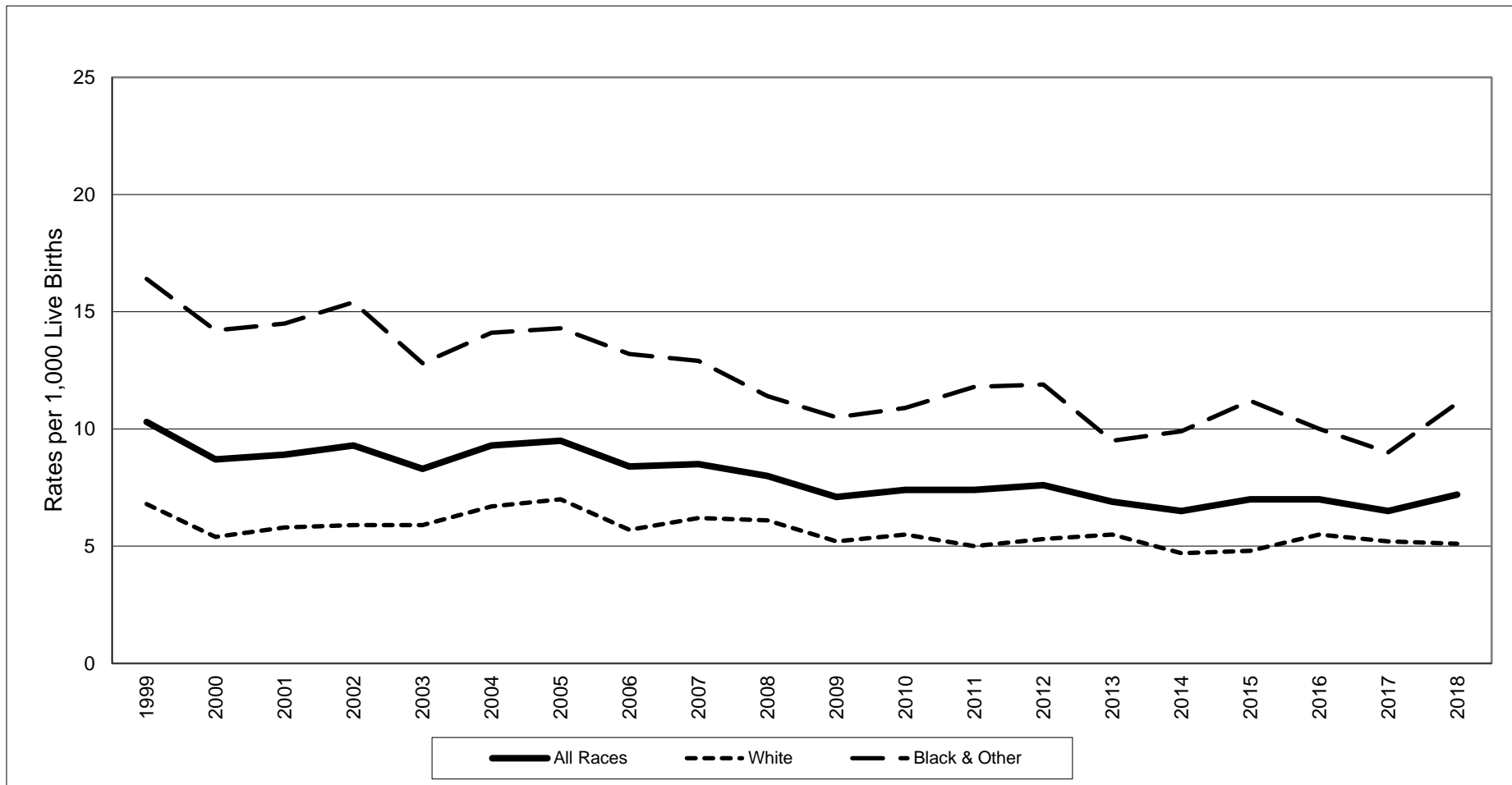
SC participates in the Collaborative Improvement and Innovation Network, or CoIIN, led by the Association of Maternal and Child Health Programs, using the science of quality improvement and collaborative learning to reduce infant mortality as well as disparities in infant mortality by addressing social determinants of health, focusing on policy recommendations.

Several other practices and programs that address infant mortality in SC include: hospital and physician emphasis on patient quality and safety; evidence-based maternal and infant home visitation programs; postpartum newborn home visits; research and education; and the SC Birth Defects Program. DHEC staff and partners work diligently to give all babies their best chance to live a healthy and long life.

#### References:

1. Healthy People 2020. Washington, DC: US Department of Health and Human Services, Office of Disease Prevention and Health Promotion. Retrieved from <https://www.healthypeople.gov/node/3492/objectives#4825>.
2. Murphy SL, Xu JQ, Kochanek KD, Arias E. Mortality in the United States, 2017. NCHS Data Brief, no 328. Hyattsville, MD: National Center for Health Statistics. November 2018.
3. AAP TASK FORCE ON SUDDEN INFANT DEATH SYNDROME. SIDS and Other Sleep-Related Infant Deaths: Updated 2016 Recommendations for a Safe Infant Sleeping Environment. *Pediatrics*. 2016;138(5):e20162938

## South Carolina Infant Mortality Rates<sup>1</sup> by Race<sup>2</sup> Residence Data, 1999-2018



	1999	2000	2001	2002	2003	2004	2005	2006	2007	2008	2009	2010	2011	2012	2013	2014	2015	2016	2017	2018
All Races	10.3	8.7	8.9	9.3	8.3	9.3	9.5	8.4	8.5	8.0	7.1	7.4	7.4	7.6	6.9	6.5	7.0	7.0	6.5	7.2
White	6.8	5.4	5.8	5.9	5.9	6.7	7.0	5.7	6.2	6.1	5.2	5.5	5.0	5.3	5.5	4.7	4.8	5.5	5.2	5.1
Black & Other	16.4	14.2	14.5	15.4	12.8	14.1	14.3	13.2	12.9	11.4	10.5	10.9	11.8	11.9	9.5	9.9	11.2	10.0	9.0	11.1

<sup>1</sup>Rates per 1,000 live births

<sup>2</sup>Race of mother

**Source:** SC DHEC, Vital Statistics

**Table 1.**  
 Infant Mortality Rates<sup>1</sup> with 95% Confidence Intervals<sup>2</sup>  
 South Carolina, 1999-2018  
 (Residence Data)

Year	Number of Live Births	Number of Infant Deaths	Infant Mortality Rate	95% Confidence Intervals
1999	54,706	564	10.3	(9.4, 11.2)
2000	55,964	488	8.7	(7.9, 9.5)
2001	55,748	496	8.9	(8.1, 9.7)
2002	54,453	507	9.3	(8.5, 10.1)
2003	55,461	463	8.3	(7.5, 9.1)
2004	56,543	524	9.3	(8.5, 10.1)
2005	57,538	549	9.5	(8.7, 10.3)
2006	62,191	520	8.4	(7.6, 9.1)
2007	62,933	538	8.5	(7.8, 9.3)
2008	63,077	504	8.0	(7.3, 8.7)
2009	60,682	430	7.1	(6.4, 7.8)
2010	58,325	430	7.4	(6.7, 8.1)
2011	57,338	423	7.4	(6.7, 8.1)
2012	57,100	435	7.6	(6.9, 8.3)
2013	56,743	389	6.9	(6.2, 7.6)
2014	57,631	372	6.5	(5.8, 7.2)
2015	58,135	405	7.0	(6.3, 7.7)
2016	57,337	401	7.0	(6.3, 7.7)
2017	57,030	371	6.5	(5.8, 7.2)
2018	56,668	406	7.2	(6.5, 7.9)

**Table 2.**  
 Infant Mortality Rates<sup>1</sup> with 95% Confidence Intervals<sup>2</sup>  
 South Carolina  
 1999-2003, 2004-2008, 2009-2013, 2014-2018  
 (Residence Data)

Years	Number of Live Births	Number of Infant Deaths	Infant Mortality Rate	95% Confidence Intervals
1999-2003	276,332	2,518	9.1	(8.8, 9.5)
2004-2008	302,282	2,635	8.7	(8.4, 9)
2009-2013	290,188	2,107	7.3	(7, 7.6)
2014-2018	286,801	1,955	6.8	(6.5, 7.1)

<sup>1</sup>Rates per 1,000 live births

<sup>2</sup>  $r \pm 61.981 (r/n)^{1/2}$ , where r = infant mortality rate and n = number of live births

**Table 3.**  
 Infant, Neonatal and Postneonatal Mortality and Mortality Rates<sup>1</sup> by Race<sup>2</sup>  
 South Carolina  
 2014, 2015, 2016, 2017 and 2018  
 (Residence Data)

<b>Infant Mortality</b>									
	Total			White			Black & Other		
Year	Number of Live Births	Number of Infant Deaths	Rate	Number of Live Births	Number of Infant Deaths	Rate	Number of Live Births	Number of Infant Deaths	Rate
2014	57,631*	372	6.5	37,923	177	4.7	19,660	195	9.9
2015	58,135*	405*	7.0	38,459	185	4.8	19,611	219	11.2
2016	57,337*	401	7.0	38,264	210	5.5	19,025	191	10.0
2017	57,030*	371*	6.5	37,601	196	5.2	19,385	174	9.0
2018	56,668*	406	7.2	37,334	192	5.1	19,277	214	11.1

<b>Neonatal Mortality (&lt;28 days)</b>									
	Total			White			Black & Other		
Year	Number of Live Births	Number of Infant Deaths	Rate	Number of Live Births	Number of Infant Deaths	Rate	Number of Live Births	Number of Infant Deaths	Rate
2014	57,631*	246	4.3	37,923	113	3	19,660	133	6.8
2015	58,135*	265*	4.6	38,459	121	3.1	19,611	143	7.3
2016	57,337*	253	4.4	38,264	117	3.1	19,025	136	7.1
2017	57,030*	239*	4.2	37,601	121	3.2	19,385	117	6.0
2018	56,668*	272	4.8	37,334	128	3.4	19,277	144	7.5

<b>Postneonatal Mortality (28-364 days)</b>									
	Total			White			Black & Other		
Year	Number of Live Births	Number of Infant Deaths	Rate	Number of Live Births	Number of Infant Deaths	Rate	Number of Live Births	Number of Infant Deaths	Rate
2014	57,631*	126	2.2	37,923	64	1.7	19,660	62	3.2
2015	58,135*	140	2.4	38,459	64	1.7	19,611	76	3.9
2016	57,337*	148	2.6	38,264	93	2.4	19,025	55	2.9
2017	57,030*	132	2.3	37,601	75	2.0	19,385	57	2.9
2018	56,668*	134	2.4	37,334	64	1.7	19,277	70	3.6

<sup>1</sup>Rates per 1,000 live births

<sup>2</sup>Race of mother

\*Includes unknown race

**Table 4.**  
**Infant Mortality and Infant Mortality Rates<sup>1</sup>**  
**South Carolina and Each County, 2018, 2016-2018, 2013-2015**  
**(Residence Data)**

County of Residence	2018		2016-2018		2013-2015	
	Number	Rate	Number	Rate	Number	Rate
<b>South Carolina</b>	406	7.2	1,178	6.9	1,166	6.8
Abbeville	3	12.8	5	7.3	8	10.6
Aiken	11	5.8	47	8.2	32	5.7
Allendale	-	0	2	8.2	2	7.4
Anderson	15	6.6	44	6.4	55	8.1
Bamberg	3	22.6	5	12.9	4	9.3
Barnwell	2	8.5	9	12.4	8	9.7
Beaufort	7	3.7	24	4.1	21	3.4
Berkeley	14	5.0	39	4.7	50	6.3
Calhoun	2	14.5	7	17.4	4	9.6
Charleston	28	5.8	75	5.1	68	4.6
Cherokee	5	7.4	11	5.5	11	5.5
Chester	6	16.5	12	11.1	10	8.8
Chesterfield	7	13.8	18	12.0	15	9.6
Clarendon	1	3.2	9	9.5	11	10.6
Colleton	4	8.7	9	6.6	9	6.6
Darlington	3	3.9	18	7.9	16	6.7
Dillon	3	7.4	14	11.4	12	9.5
Dorchester	9	4.9	35	6.4	27	4.9
Edgefield	3	15.3	4	6.9	8	12.2
Fairfield	3	14.9	7	11.2	5	7.7
Florence	23	14.2	52	10.5	68	13.1
Georgetown	3	5.5	12	7.3	7	4.1
Greenville	47	7.5	123	6.5	108	5.7
Greenwood	7	8.9	26	10.7	15	5.8
Hampton	1	5.0	4	6.5	7	10.6
Horry	22	7.0	66	7.0	59	6.3
Jasper	2	5.5	12	11.1	4	3.8
Kershaw	6	8.1	15	6.6	17	7.9
Lancaster	10	9.8	20	6.5	24	8.1
Laurens	5	6.2	18	7.6	25	11.2
Lee	2	12.6	7	13.0	2	3.8
Lexington	21	6.5	62	6.4	59	6.1
McCormick	1	20.4	1	6.1	3	16.4
Marion	3	8.6	11	10.2	15	12.7
Marlboro	4	14.9	13	15.5	10	10.5
Newberry	3	7.3	10	7.9	10	7.3
Oconee	8	11.5	18	8.3	11	4.8
Orangeburg	10	9.9	28	9.5	36	11.7
Pickens	4	3.5	19	5.4	21	5.7
Richland	47	10.0	116	8.2	129	8.9
Saluda	2	8.2	2	2.9	4	5.4
Spartanburg	17	4.4	61	5.4	58	5.5
Sumter	8	5.9	27	6.6	27	6.0
Union	2	6.7	4	4.3	5	5.3
Williamsburg	5	18.7	8	8.5	6	5.9
York	14	4.8	49	5.5	60	6.9

<sup>1</sup>Rates per 1,000 live births. Rates calculated with 20 or fewer deaths are unreliable and should be used cautiously.

**Table 4-A.**  
**White<sup>1</sup> Infant Mortality and Infant Mortality Rates<sup>2</sup>**  
**South Carolina and Each County, 2018, 2016-2018, 2013-2015**  
**(Residence Data)**

County of Residence	2018		2016-2018		2013-2015	
	Number	Rate	Number	Rate	Number	Rate
<b>South Carolina</b>	192	5.1	598	5.3	566	5.0
Abbeville	1	6.1	1	2.1	3	5.8
Aiken	9	7.0	26	6.8	16	4.2
Allendale	-	0	-	0	-	0
Anderson	10	5.5	32	5.9	33	6.1
Bamberg	-	0	-	0	-	0
Barnwell	-	0	5	13.2	3	8.1
Beaufort	4	2.8	11	2.5	13	2.9
Berkeley	7	3.5	24	4.0	24	4.1
Calhoun	2	28.2	3	14.8	1	4.2
Charleston	11	3.3	29	2.9	23	2.4
Cherokee	3	6.1	8	5.4	7	4.7
Chester	3	15.4	7	11.7	4	6.6
Chesterfield	5	15.4	9	9.8	13	14.1
Clarendon	-	0	4	9.2	3	6.6
Colleton	2	7.7	5	6.6	3	4.0
Darlington	-	0	7	6.2	6	4.9
Dillon	-	0	5	9.4	2	4.0
Dorchester	7	5.6	19	5.0	18	4.7
Edgefield	-	0	-	0	3	8.4
Fairfield	1	15.4	2	8.9	-	0
Florence	8	10.7	19	8.3	19	7.7
Georgetown	3	9.3	9	9.4	5	5.0
Greenville	24	5.1	70	4.9	65	4.5
Greenwood	3	6.5	10	6.7	6	3.8
Hampton	1	13.7	1	4.3	2	7.5
Horry	12	4.8	42	5.7	43	5.8
Jasper	1	4.8	7	11.2	2	3.5
Kershaw	3	5.6	10	6.2	10	6.5
Lancaster	5	6.8	11	4.9	16	7.6
Laurens	1	1.8	8	4.7	15	9.5
Lee	1	21.7	3	22.4	-	0
Lexington	14	5.6	41	5.4	46	6.0
McCormick	-	0	-	0	-	0
Marion	-	0	2	5.6	2	5.2
Marlboro	-	0	6	17.0	3	7.8
Newberry	1	3.9	3	3.8	5	6.1
Oconee	7	11.3	17	8.7	9	4.3
Orangeburg	1	3.0	5	5.3	6	6.4
Pickens	4	3.9	18	5.7	20	5.9
Richland	11	6.0	34	5.8	27	4.4
Saluda	2	10.5	2	3.7	2	3.6
Spartanburg	12	4.2	42	5.0	37	4.7
Sumter	2	3.0	9	4.6	4	1.9
Union	2	11.2	2	3.4	5	8.3
Williamsburg	1	11.9	1	3.5	-	0
York	8	3.9	29	4.6	42	6.7

<sup>1</sup>Race of mother

<sup>2</sup>Rates per 1,000 live births. Rates calculated with 20 or fewer deaths are unreliable and should be used cautiously.



**Table 4-B.**  
**Black and Other<sup>1</sup> Infant Mortality and Infant Mortality Rates<sup>2</sup>**  
**South Carolina and Each County, 2018, 2016-2018, 2013-2015**  
**(Residence Data)**

County of Residence	2018		2016-2018		2013-2015	
	Number	Rate	Number	Rate	Number	Rate
<b>South Carolina</b>	214	11.1	579	10.0	599	10.2
Abbeville	2	28.6	4	20.0	5	21.1
Aiken	2	3.3	20	10.6	16	8.6
Allendale	-	0	2	9.7	2	9.0
Anderson	5	11.6	12	8.5	22	15.5
Bamberg	3	38.0	5	21.3	4	13.3
Barnwell	2	16.1	4	11.6	5	11.0
Beaufort	3	6.1	13	8.5	8	4.9
Berkeley	7	8.6	15	6.7	26	12.0
Calhoun	-	0	4	20.1	3	16.9
Charleston	17	11.0	46	9.9	45	9.1
Cherokee	2	10.7	3	5.7	4	7.6
Chester	3	17.9	5	10.4	6	11.3
Chesterfield	2	10.9	9	15.7	2	3.1
Clarendon	1	5.6	5	9.7	8	13.9
Colleton	2	10.0	4	6.7	6	9.7
Darlington	3	8.0	11	9.6	10	8.5
Dillon	3	12.4	9	13.0	10	13.1
Dorchester	2	3.4	16	9.3	9	5.4
Edgefield	3	37.5	4	15.3	5	16.8
Fairfield	2	14.7	5	12.4	5	11.9
Florence	15	17.4	33	12.4	49	18.1
Georgetown	-	0	3	4.3	2	2.8
Greenville	23	15.3	53	11.7	43	9.6
Greenwood	4	12.2	16	16.9	9	8.9
Hampton	-	0	3	7.9	5	13.0
Horry	10	14.8	24	11.6	16	8.2
Jasper	1	6.6	5	11.0	2	4.2
Kershaw	3	14.5	5	7.6	7	11.6
Lancaster	5	17.5	9	10.6	8	9.3
Laurens	4	16.3	10	14.6	10	15.3
Lee	1	8.9	4	10.0	2	5.2
Lexington	7	9.7	21	10.1	12	6.2
McCormick	1	37.0	1	10.0	3	24.8
Marion	3	12.7	9	12.6	13	16.2
Marlboro	4	26.0	7	14.4	7	12.4
Newberry	2	12.9	7	14.8	5	9.1
Oconee	1	13.2	1	4.8	2	9.2
Orangeburg	9	13.3	23	11.5	30	14.0
Pickens	-	0	1	2.8	1	3.1
Richland	36	12.6	82	9.9	102	12.1
Saluda	-	0	-	0	2	10.4
Spartanburg	5	5.1	19	6.5	21	7.6
Sumter	6	8.9	18	8.3	23	9.6
Union	-	0	2	6.0	-	0
Williamsburg	4	21.9	7	10.8	6	8.6
York	6	6.7	20	7.8	18	7.4

<sup>1</sup>Race of mother

<sup>2</sup>Rates per 1,000 live births. Rates calculated with 20 or fewer deaths are unreliable and should be used cautiously.

**Table 5.**

Infant, Neonatal and Postneonatal Mortality Rates<sup>1</sup> by Race<sup>2</sup>  
 and Percent Change from 2017 to 2018  
 South Carolina  
 (Residence Data)

<b>Infant Mortality</b>			
Year	Total	White	Black & Other
2017	6.5	5.2	9.0
2018	7.2	5.1	11.1
<b>Percent Change</b>	10.8%	-1.9%	23.3%

<b>Neonatal Mortality</b>			
Year	Total	White	Black & Other
2017	4.2	3.2	6.0
2018	4.8	3.4	7.5
<b>Percent Change</b>	14.3%	6.2%	25.0%

<b>Postneonatal Mortality</b>			
Year	Total	White	Black & Other
2017	2.3	2.0	2.9
2018	2.4	1.7	3.6
<b>Percent Change</b>	4.3%	-15.0%	24.1%

<sup>1</sup>Rates per 1,000 live births

<sup>2</sup>Race of mother

**Table 6.**  
**Neonatal Mortality and Neonatal Mortality Rates<sup>1</sup>**  
**South Carolina and Each County, 2018, 2016-2018, 2013-2015**  
**(Residence Data)**

County of Residence	2018		2016-2018		2013-2015	
	Number	Rate	Number	Rate	Number	Rate
<b>South Carolina</b>	272	4.8	764	4.5	774	4.5
Abbeville	2	8.5	4	5.8	4	5.3
Aiken	8	4.2	30	5.2	22	3.9
Allendale	-	0	2	8.2	2	7.4
Anderson	12	5.3	30	4.4	36	5.3
Bamberg	3	22.6	5	12.9	4	9.3
Barnwell	2	8.5	4	5.5	4	4.8
Beaufort	5	2.6	17	2.9	17	2.8
Berkeley	9	3.2	23	2.8	33	4.1
Calhoun	1	7.2	5	12.4	4	9.6
Charleston	17	3.5	41	2.8	49	3.3
Cherokee	5	7.4	8	4.0	6	3.0
Chester	2	5.5	5	4.6	7	6.2
Chesterfield	3	5.9	9	6.0	12	7.7
Clarendon	1	3.2	4	4.2	6	5.8
Colleton	3	6.5	6	4.4	4	2.9
Darlington	2	2.6	8	3.5	8	3.3
Dillon	1	2.5	10	8.2	7	5.5
Dorchester	5	2.7	19	3.5	18	3.3
Edgefield	2	10.2	3	5.2	5	7.6
Fairfield	2	10.0	4	6.4	4	6.2
Florence	15	9.3	36	7.2	47	9.1
Georgetown	2	3.7	8	4.9	6	3.5
Greenville	37	5.9	83	4.4	71	3.8
Greenwood	4	5.1	16	6.6	13	5.0
Hampton	1	5.0	3	4.9	3	4.6
Horry	17	5.4	47	5.0	35	3.7
Jasper	1	2.8	8	7.4	4	3.8
Kershaw	5	6.8	12	5.3	10	4.6
Lancaster	6	5.9	13	4.2	19	6.4
Laurens	3	3.7	13	5.5	18	8.1
Lee	1	6.3	5	9.3	1	1.9
Lexington	11	3.4	35	3.6	43	4.5
McCormick	1	20.4	1	6.1	2	10.9
Marion	3	8.6	9	8.4	9	7.6
Marlboro	2	7.4	8	9.5	7	7.4
Newberry	1	2.4	3	2.4	10	7.3
Oconee	2	2.9	8	3.7	8	3.5
Orangeburg	7	6.9	25	8.5	23	7.5
Pickens	2	1.7	13	3.7	13	3.5
Richland	35	7.5	82	5.8	79	5.4
Saluda	2	8.2	2	2.9	3	4.0
Spartanburg	8	2.1	33	2.9	31	2.9
Sumter	5	3.7	22	5.4	15	3.3
Union	2	6.7	3	3.2	4	4.2
Williamsburg	4	15.0	7	7.5	2	2.0
York	10	3.4	32	3.6	46	5.3

<sup>1</sup>Rates per 1,000 live births. Rates calculated with 20 or fewer deaths are unreliable and should be used cautiously.

**Table 6-A.**  
**White<sup>1</sup> Neonatal Mortality and Neonatal Mortality Rates<sup>2</sup>**  
**South Carolina and Each County, 2018, 2016-2018, 2013-2015**  
**(Residence Data)**

County of Residence	2018		2016-2018		2013-2015	
	Number	Rate	Number	Rate	Number	Rate
<b>South Carolina</b>	128	3.4	366	3.2	372	3.3
Abbeville	1	6.1	1	2.1	2	3.9
Aiken	6	4.7	17	4.5	9	2.4
Allendale	-	0	-	0	-	0
Anderson	8	4.4	20	3.7	23	4.3
Bamberg	-	0	-	0	-	0
Barnwell	-	0	1	2.6	1	2.7
Beaufort	2	1.4	7	1.6	10	2.2
Berkeley	4	2.0	12	2.0	14	2.4
Calhoun	1	14.1	2	9.9	1	4.2
Charleston	9	2.7	16	1.6	19	2.0
Cherokee	3	6.1	5	3.4	4	2.7
Chester	1	5.1	2	3.3	2	3.3
Chesterfield	1	3.1	4	4.3	11	12.0
Clarendon	-	0	1	2.3	1	2.2
Colleton	2	7.7	4	5.3	-	0
Darlington	-	0	3	2.6	4	3.3
Dillon	-	0	4	7.5	2	4.0
Dorchester	4	3.2	8	2.1	11	2.9
Edgefield	-	0	-	0	1	2.8
Fairfield	-	0	-	0	-	0
Florence	6	8.0	14	6.1	9	3.7
Georgetown	2	6.2	6	6.3	4	4.0
Greenville	20	4.2	48	3.3	41	2.9
Greenwood	-	0	6	4.0	6	3.8
Hampton	1	13.7	1	4.3	2	7.5
Horry	9	3.6	31	4.2	24	3.2
Jasper	1	4.8	4	6.4	2	3.5
Kershaw	2	3.8	7	4.4	7	4.5
Lancaster	4	5.4	8	3.6	13	6.2
Laurens	1	1.8	7	4.1	10	6.4
Lee	-	0	1	7.5	-	0
Lexington	7	2.8	20	2.6	33	4.3
McCormick	-	0	-	0	-	0
Marion	-	0	2	5.6	1	2.6
Marlboro	-	0	4	11.3	1	2.6
Newberry	-	0	-	0	5	6.1
Oconee	2	3.2	8	4.1	7	3.4
Orangeburg	-	0	4	4.3	2	2.1
Pickens	2	2.0	12	3.8	12	3.6
Richland	9	4.9	22	3.8	21	3.4
Saluda	2	10.5	2	3.7	1	1.8
Spartanburg	8	2.8	22	2.6	17	2.2
Sumter	2	3.0	9	4.6	2	1.0
Union	2	11.2	2	3.4	4	6.6
Williamsburg	1	11.9	1	3.5	-	0
York	5	2.5	18	2.9	33	5.2

<sup>1</sup>Race of mother

<sup>2</sup>Rates per 1,000 live births. Rates calculated with 20 or fewer deaths are unreliable and should be used cautiously.

**Table 6-B.**

Black and Other<sup>1</sup> Neonatal Mortality and Neonatal Mortality Rates<sup>2</sup>  
 South Carolina and Each County, 2018, 2016-2018, 2013-2015  
 (Residence Data)

County of Residence	2018		2016-2018		2013-2015	
	Number	Rate	Number	Rate	Number	Rate
<b>South Carolina</b>	144	7.5	397	6.9	401	6.8
Abbeville	1	14.3	3	15.0	2	8.4
Aiken	2	3.3	12	6.3	13	7.0
Allendale	-	0	2	9.7	2	9.0
Anderson	4	9.3	10	7.1	13	9.1
Bamberg	3	38.0	5	21.3	4	13.3
Barnwell	2	16.1	3	8.7	3	6.6
Beaufort	3	6.1	10	6.5	7	4.3
Berkeley	5	6.2	11	4.9	19	8.8
Calhoun	-	0	3	15.1	3	16.9
Charleston	8	5.2	25	5.4	30	6.0
Cherokee	2	10.7	3	5.7	2	3.8
Chester	1	6.0	3	6.2	5	9.4
Chesterfield	2	10.9	5	8.7	1	1.6
Clarendon	1	5.6	3	5.8	5	8.7
Colleton	1	5.0	2	3.4	4	6.5
Darlington	2	5.4	5	4.4	4	3.4
Dillon	1	4.1	6	8.7	5	6.5
Dorchester	1	1.7	11	6.4	7	4.2
Edgefield	2	25.0	3	11.5	4	13.4
Fairfield	2	14.7	4	10.0	4	9.5
Florence	9	10.4	22	8.2	38	14.0
Georgetown	-	0	2	2.9	2	2.8
Greenville	17	11.3	35	7.7	30	6.7
Greenwood	4	12.2	10	10.5	7	6.9
Hampton	-	0	2	5.3	1	2.6
Horry	8	11.8	16	7.8	11	5.7
Jasper	-	0	4	8.8	2	4.2
Kershaw	3	14.5	5	7.6	3	5.0
Lancaster	2	7.0	5	5.9	6	7.0
Laurens	2	8.2	6	8.7	8	12.3
Lee	1	8.9	4	10.0	1	2.6
Lexington	4	5.5	15	7.2	9	4.7
McCormick	1	37.0	1	10.0	2	16.5
Marion	3	12.7	7	9.8	8	10.0
Marlboro	2	13.0	4	8.2	6	10.6
Newberry	1	6.5	3	6.4	5	9.1
Oconee	-	0	-	0	1	4.6
Orangeburg	7	10.3	21	10.5	21	9.8
Pickens	-	0	1	2.8	1	3.1
Richland	26	9.1	60	7.2	58	6.9
Saluda	-	0	-	0	2	10.4
Spartanburg	-	0	11	3.8	14	5.1
Sumter	3	4.4	13	6.0	13	5.4
Union	-	0	1	3.0	-	0
Williamsburg	3	16.4	6	9.2	2	2.9
York	5	5.6	14	5.4	13	5.3

<sup>1</sup>Race of mother<sup>2</sup>Rates per 1,000 live births. Rates calculated with 20 or fewer deaths are unreliable and should be used cautiously.

**Table 7.**  
**Postneonatal Mortality and Postneonatal Mortality Rates<sup>1</sup>**  
**South Carolina and Each County, 2018, 2016-2018, 2013-2015**  
**(Residence Data)**

County of Residence	2018		2016-2018		2013-2015	
	Number	Rate	Number	Rate	Number	Rate
<b>South Carolina</b>	134	2.4	414	2.4	392	2.3
Abbeville	1	4.3	1	1.5	4	5.3
Aiken	3	1.6	17	3.0	10	1.8
Allendale	-	0	-	0	-	0
Anderson	3	1.3	14	2.0	19	2.8
Bamberg	-	0	-	0	-	0
Barnwell	-	0	5	6.9	4	4.8
Beaufort	2	1.0	7	1.2	4	0.6
Berkeley	5	1.8	16	1.9	17	2.1
Calhoun	1	7.2	2	5.0	-	0
Charleston	11	2.3	34	2.3	19	1.3
Cherokee	-	0	3	1.5	5	2.5
Chester	4	11.0	7	6.5	3	2.6
Chesterfield	4	7.9	9	6.0	3	1.9
Clarendon	-	0	5	5.3	5	4.8
Colleton	1	2.2	3	2.2	5	3.6
Darlington	1	1.3	10	4.4	8	3.3
Dillon	2	4.9	4	3.3	5	3.9
Dorchester	4	2.2	16	2.9	9	1.6
Edgefield	1	5.1	1	1.7	3	4.6
Fairfield	1	5.0	3	4.8	1	1.5
Florence	8	5.0	16	3.2	21	4.1
Georgetown	1	1.8	4	2.4	1	0.6
Greenville	10	1.6	40	2.1	37	2.0
Greenwood	3	3.8	10	4.1	2	0.8
Hampton	-	0	1	1.6	4	6.1
Horry	5	1.6	19	2.0	24	2.6
Jasper	1	2.8	4	3.7	-	0
Kershaw	1	1.4	3	1.3	7	3.2
Lancaster	4	3.9	7	2.3	5	1.7
Laurens	2	2.5	5	2.1	7	3.1
Lee	1	6.3	2	3.7	1	1.9
Lexington	10	3.1	27	2.8	16	1.7
McCormick	-	0	-	0	1	5.5
Marion	-	0	2	1.9	6	5.1
Marlboro	2	7.4	5	6.0	3	3.2
Newberry	2	4.9	7	5.6	-	0
Oconee	6	8.6	10	4.6	3	1.3
Orangeburg	3	3.0	3	1.0	13	4.2
Pickens	2	1.7	6	1.7	8	2.2
Richland	12	2.6	34	2.4	50	3.4
Saluda	-	0	-	0	1	1.3
Spartanburg	9	2.3	28	2.5	27	2.5
Sumter	3	2.2	5	1.2	12	2.7
Union	-	0	1	1.1	1	1.1
Williamsburg	1	3.7	1	1.1	4	4.0
York	4	1.4	17	1.9	14	1.6

<sup>1</sup>Rates per 1,000 live births. Rates calculated with 20 or fewer deaths are unreliable and should be used cautiously.

**Table 7-A.**

White<sup>1</sup> Postneonatal Mortality and Postneonatal Mortality Rates<sup>2</sup>  
 South Carolina and Each County, 2018, 2016-2018, 2013-2015  
 (Residence Data)

County of Residence	2018		2016-2018		2013-2015	
	Number	Rate	Number	Rate	Number	Rate
<b>South Carolina</b>	64	1.7	232	2.0	194	1.7
Abbeville	-	0	-	0	1	1.9
Aiken	3	2.3	9	2.4	7	1.9
Allendale	-	0	-	0	-	0
Anderson	2	1.1	12	2.2	10	1.9
Bamberg	-	0	-	0	-	0
Barnwell	-	0	4	10.6	2	5.4
Beaufort	2	1.4	4	0.9	3	0.7
Berkeley	3	1.5	12	2.0	10	1.7
Calhoun	1	14.1	1	4.9	-	0
Charleston	2	0.6	13	1.3	4	0.4
Cherokee	-	0	3	2.0	3	2.0
Chester	2	10.3	5	8.3	2	3.3
Chesterfield	4	12.3	5	5.4	2	2.2
Clarendon	-	0	3	6.9	2	4.4
Colleton	-	0	1	1.3	3	4.0
Darlington	-	0	4	3.5	2	1.6
Dillon	-	0	1	1.9	-	0
Dorchester	3	2.4	11	2.9	7	1.8
Edgefield	-	0	-	0.0	2	5.6
Fairfield	1	15.4	2	8.9	-	0
Florence	2	2.7	5	2.2	10	4.1
Georgetown	1	3.1	3	3.1	1	1.0
Greenville	4	0.8	22	1.5	24	1.7
Greenwood	3	6.5	4	2.7	-	0
Hampton	-	0	-	0	-	0
Horry	3	1.2	11	1.5	19	2.6
Jasper	-	0	3	4.8	-	0
Kershaw	1	1.9	3	1.9	3	1.9
Lancaster	1	1.4	3	1.3	3	1.4
Laurens	-	0	1	0.6	5	3.2
Lee	1	21.7	2	14.9	-	0
Lexington	7	2.8	21	2.8	13	1.7
McCormick	-	0	-	0	-	0
Marion	-	0	-	0	1	2.6
Marlboro	-	0	2	5.7	2	5.2
Newberry	1	3.9	3	3.8	-	0
Oconee	5	8.1	9	4.6	2	1.0
Orangeburg	1	3.0	1	1.1	4	4.3
Pickens	2	2.0	6	1.9	8	2.4
Richland	2	1.1	12	2.1	6	1.0
Saluda	-	0	-	0	1	1.8
Spartanburg	4	1.4	20	2.4	20	2.5
Sumter	-	0	-	0	2	1.0
Union	-	0	-	0	1	1.7
Williamsburg	-	0	-	0	-	0
York	3	1.5	11	1.7	9	1.4

<sup>1</sup>Race of mother<sup>2</sup>Rates per 1,000 live births. Rates calculated with 20 or fewer deaths are unreliable and should be used cautiously.

**Table 7-B.**

Black and Other<sup>1</sup> Postneonatal Mortality and Postneonatal Mortality Rates<sup>2</sup>  
 South Carolina and Each County, 2018, 2016-2018, 2013-2015  
 (Residence Data)

County of Residence	2018		2016-2018		2013-2015	
	Number	Rate	Number	Rate	Number	Rate
<b>South Carolina</b>	70	3.6	182	3.2	198	3.4
Abbeville	1	14.3	1	5.0	3	12.7
Aiken	-	0	8	4.2	3	1.6
Allendale	-	0	-	0	-	0
Anderson	1	2.3	2	1.4	9	6.3
Bamberg	-	0	-	0	-	0
Barnwell	-	0	1	2.9	2	4.4
Beaufort	-	0	3	2.0	1	0.6
Berkeley	2	2.5	4	1.8	7	3.2
Calhoun	-	0	1	5.0	-	0
Charleston	9	5.8	21	4.5	15	3.0
Cherokee	-	0	-	0	2	3.8
Chester	2	11.9	2	4.2	1	1.9
Chesterfield	-	0	4	7.0	1	1.6
Clarendon	-	0	2	3.9	3	5.2
Colleton	1	5.0	2	3.4	2	3.2
Darlington	1	2.7	6	5.2	6	5.1
Dillon	2	8.3	3	4.3	5	6.5
Dorchester	1	1.7	5	2.9	2	1.2
Edgefield	1	12.5	1	3.8	1	3.4
Fairfield	-	0	1	2.5	1	2.4
Florence	6	6.9	11	4.1	11	4.1
Georgetown	-	0	1	1.4	-	0.0
Greenville	6	4.0	18	4.0	13	2.9
Greenwood	-	0	6	6.3	2	2.0
Hampton	-	0	1	2.6	4	10.4
Horry	2	3.0	8	3.9	5	2.6
Jasper	1	6.6	1	2.2	-	0
Kershaw	-	0	-	0	4	6.7
Lancaster	3	10.5	4	4.7	2	2.3
Laurens	2	8.2	4	5.8	2	3.1
Lee	-	0	-	0	1	2.6
Lexington	3	4.1	6	2.9	3	1.6
McCormick	-	0	-	0	1	8.3
Marion	-	0	2	2.8	5	6.2
Marlboro	2	13.0	3	6.2	1	1.8
Newberry	1	6.5	4	8.5	-	0
Oconee	1	13.2	1	4.8	1	4.6
Orangeburg	2	2.9	2	1.0	9	4.2
Pickens	-	0	-	0	-	0
Richland	10	3.5	22	2.6	44	5.2
Saluda	-	0	-	0	-	0.0
Spartanburg	5	5.1	8	2.7	7	2.5
Sumter	3	4.4	5	2.3	10	4.2
Union	-	0	1	3.0	-	0
Williamsburg	1	5.5	1	1.5	4	5.7
York	1	1.1	6	2.3	5	2.1

<sup>1</sup>Race of mother<sup>2</sup>Rates per 1,000 live births. Rates calculated with 20 or fewer deaths are unreliable and should be used cautiously.



**Table 8.**  
**Leading Causes of Infant Death by Age at Death**  
**South Carolina, 2018**  
**(Residence Data)**

Cause of Infant Death (ICD-10 Codes)	Total	Under 1 Day	1-6 Days	7-27 Days	Neonatal (<28 days)	Post-Neonatal (28-364 days)
<b>Total Infant Deaths</b>	406	149	60	63	272	134
Congenital malformations, deformations, etc. (Q00-Q99)	82	30	14	24	68	14
Disorders related to short gestation and low birthweight, NEC (P07)	58	49	3	3	55	3
Accidents (V01-X59, Y85-Y86)	38	-	1	2	3	35
Fetus and newborn affected by maternal complications of pregnancy (P01)	23	22	1	-	23	-
Bacterial sepsis of newborn (P36)	14	3	4	5	12	2
Sudden infant death syndrome (R95)	14	-	-	1	1	13
Intrauterine hypoxia and birth asphyxia (P20-P21)	10	3	4	3	10	-
Respiratory distress of newborn (P22)	10	4	3	2	9	1
Newborn affected by complication of placenta, etc. (P02)	9	7	2	-	9	-
Assault (homicide) (X85-Y09, Y87.1)	9	1	1	-	2	7
All other causes	139	30	27	23	80	59

**Table 8-A.**  
**Leading Causes of White<sup>1</sup> Infant Death by Age at Death**  
**South Carolina, 2018**  
**(Residence Data)**

Cause of Infant Death (ICD-10 Codes)	Total	Under 1 Day	1-6 Days	7-27 Days	Neonatal (<28 days)	Post-Neonatal (28-364 days)
<b>Total White Infant Deaths</b>	186	59	34	31	124	62
Congenital malformations, deformations, etc. (Q00-Q99)	52	17	12	17	46	6
Disorders related to short gestation and low birthweight, NEC (P07)	16	12	1	1	14	2
Accidents (V01-X59, Y85-Y86)	15	-	-	-	-	15
Bacterial sepsis of newborn (P36)	7	1	2	2	5	2
Sudden infant death syndrome (R95)	7	-	-	-	-	7
Newborn affected by complication of placenta, etc. (P02)	6	4	2	-	6	-
Neonatal hemorrhage (P50-P52, P54)	5	2	3	-	5	-
Diarhea (A09)	4	-	-	-	-	4
Fetus and newborn affected by maternal complications of pregnancy (P01)	4	3	1	-	4	-
Intrauterine hypoxia and birth asphyxia (P20-P21)	4	-	3	1	4	-
Respiratory distress of newborn (P22)	4	2	1	1	4	-
Chronic respiratory disease, etc. (P27)	4	-	-	-	-	4
Assault (homicide) (X85-Y09, Y87.1)	4	1	-	-	1	3
All other causes	54	17	9	9	35	19

<sup>1</sup> Race of child

**Table 8-B.**  
**Leading Causes of Black and Other<sup>1</sup> Infant Death by Age at Death**  
**South Carolina, 2018**  
**(Residence Data)**

Cause of Infant Death (ICD-10 Codes)	Total	Under 1 Day	1-6 Days	7-27 Days	Neonatal (<28 days)	Post-Neonatal (28-364 days)
<b>Total Black and Other Infant Deaths</b>	220	90	26	32	148	72
Disorders related to short gestation and low birthweight, NEC (P07)	42	37	2	2	41	1
Congenital malformations, deformations, etc. (Q00-Q99)	30	13	2	7	22	8
Accidents (V01-X59, Y85-Y86)	23	-	1	2	3	20
Fetus and newborn affected by maternal complications of pregnancy (P01)	19	19	-	-	19	-
Bacterial sepsis of newborn (P36)Accidents (V01-X59, Y85-Y86)	7	2	2	3	7	-
Sudden infant death syndrome (R95)	7	-	-	1	1	6
Intrauterine hypoxia and birth asphyxia (P20-P21)	6	3	1	2	6	-
Respiratory distress of newborn (P22)	6	2	2	1	5	1
Assault (homicide) (X85-Y09,Y87.1)	5	-	1	-	1	4
Septicemia (A40-A41)	4	-	-	-	-	4
Pulmonary hemorrhage, etc. (P26)	4	1	3	-	4	-
All other causes	67	13	12	14	39	28

<sup>1</sup> Race of child

**Table 8-C.**  
 Percent Change of Leading Causes of Infant Death  
 from 2017 to 2018, South Carolina

Cause of Infant Death Ranked by 2018 Data (ICD-10 Codes)	2017	2018	% Change
<b>Total Infant Deaths</b>	<b>365</b>	<b>406</b>	<b>11.2%</b>
Congenital malformations, deformations, etc. (Q00-Q99)	64	82	28.1%
Disorders related to short gestation and low birthweight, NEC. (P07)	52	58	11.5%
Accidents (V01-X59, Y85-Y86)	34	38	11.8%
Fetus and newborn affected by maternal complications of pregnancy (P01)	34	23	-32.4%
Bacterial sepsis of newborn (P36)	8	14	75.0%
Sudden infant death syndrome (R95)	28	14	-50.0%
Intrauterine hypoxia and birth asphyxia (P20-P21)	8	10	25.0%
Respiratory distress of newborn (P22)	8	10	25.0%
Newborn affected by complication of placenta, etc. (P02)	13	9	-30.8%
Assault (homicide) (X85-Y09, Y87.1)	5	9	80%
All other causes	111	139	25.2%

**Table 9.**  
Breakdown of Infant Deaths due to Accidents  
South Carolina, 2012-2018  
(Residence Data)

	2012	2013	2014	2015	2016	2017	2018	Total (2012-2018)
Accidental suffocation and strangulation in bed (W75, W84)	39	21	31	35	33	30	34	223
Other accidental threats to breathing	0	2	3	1	3	1	2	12
Transportation	1	0	3	0	2	1	1	8
Drowning	0	0	1	0	0	0	0	1
Poison	0	0	1	0	0	0	0	1
Other accidents	1	0	1	2	1	2	1	8
<b>Total</b>	<b>41</b>	<b>23</b>	<b>40</b>	<b>38</b>	<b>39</b>	<b>34</b>	<b>38</b>	<b>253</b>

**Table 10.**  
Breakdown of Sudden Unexplained Infant Deaths  
South Carolina, 2012-2018  
(Residence Data)

	2012	2013	2014	2015	2016	2017	2018	Total (2012-2018)
Accidental suffocation and strangulation in bed (W75, W84)	39	21	31	35	33	30	34	223
Sudden Infant Death Syndrome (R95)	33	35	31	28	27	28	14	196
Hanging, strangulation, and suffocation, undetermined intent (Y20)	1	9	4	4	1	2	2	23
Other ill-defined and unspecified causes of mortality (R99)	12	6	11	11	10	10	21	81
<b>Total</b>	<b>85</b>	<b>71</b>	<b>77</b>	<b>78</b>	<b>71</b>	<b>70</b>	<b>71</b>	<b>523</b>

**Table 11.**  
**Leading Causes of Infant Death and Mortality Rates<sup>1</sup>**  
**South Carolina, 2016-2018**  
**(Residence Data)**

**Table 11. South Carolina Infant Death, Resident Data, 2016-2018, All races**

Rank	Cause of death	Number	Rate
	.....Total Infant Deaths.....	1,178	6.9
1	Congenital malformations, deformations, etc. (Q00-Q99).....	231	1.4
2	Disorders related to short gestation and low birthweight (P07).....	167	1.0
3	Accidents (V01-X59,Y85-Y86).....	111	0.6
4	Fetus and newborn affected by maternal complications of pregnancy (P01)...	77	0.5
5	Sudden infant death syndrome (R95).....	69	0.4
6	Bacterial sepsis of newborn (P36).....	38	0.2
7	Newborn affected by complications of placenta, etc. (P02).....	36	0.2
8	Respiratory distress of newborn (P22).....	31	0.2
9	Disease of circulatory system (I00-I99).....	26	0.2
10	Intrauterine hypoxia and birth asphyxia (P20-P21)	24	0.1
	.....All Other Causes.....	368	0.1

**Table 11-A. South Carolina Infant Death, Resident Data, 2016-2018, White**

Rank	Cause of death	Number	Rate
	.....All White Infant Deaths.....	567	5.0
1	Congenital malformations, deformations, etc. (Q00-Q99).....	146	1.3
2	Accidents (V01-X59,Y85-Y86).....	57	0.5
3	Disorders related to short gestation and low birthweight (P07).....	53	0.5
4	Sudden infant death syndrome (R95).....	34	0.3
5	Fetus and newborn affected by maternal complications of pregnancy (P01)...	24	0.2
6	Newborn affected by complications of placenta, etc. (P02).....	19	0.2
7	Neonatal hemorrhage (P50-P52, P54)	15	0.1
8	Assault (homicide) (X85-Y09,Y87.1)	14	0.1
9	Disease of circulatory system (I00-I99).....	13	0.1
10	Bacterial sepsis of newborn (P36).....	13	0.1
	.....All Other Causes.....	179	1.6

**Table 11-B. South Carolina Infant Death, Resident Data, 2016-2018, Black and Other**

Rank	Cause of death	Number	Rate
	.....All Black And Other Infant Deaths.....	610	10.6
1	Disorders related to short gestation and low birthweight (P07).....	114	2.0
2	Congenital malformations, deformations, etc. (Q00-Q99).....	85	1.5
3	Accidents (V01-X59,Y85-Y86).....	54	0.9
4	Fetus and newborn affected by maternal complications of pregnancy (P01)...	53	0.9
5	Sudden infant death syndrome (R95).....	35	0.6
6	Bacterial sepsis of newborn (P36).....	25	0.4
7	Respiratory distress of newborn (P22).....	19	0.3
8	Newborn affected by complications of placenta, etc. (P02).....	17	0.3
9	Disease of circulatory system (I00-I99).....	13	0.2
10	Intrauterine hypoxia and birth asphyxia (P20-P21)	12	0.2
	.....All Other Causes.....	183	3.2

<sup>1</sup>Rates per 1,000 live births. Rates calculated with 20 or fewer deaths are unreliable and should be used cautiously.

**Table 12.**

Comparison of Characteristics for All Live Births, by Race<sup>1</sup>  
 Z-tests for differences in proportions<sup>3</sup>  
 South Carolina, 2017 to 2018  
 (Residence Data)

	2017		2018		Z-TEST	P-VALUE
	Percent	Number	Percent	Number		

MOTHER < 18 YEARS						
TOTAL <sup>2</sup>	1.58	902	1.55	879	-0.4139	0.6790
White	1.30	487	1.25	466	-0.5739	0.5660
Black & Other	2.14	415	2.13	411	-0.0595	0.9525

MARITAL STATUS: UNMARRIED						
TOTAL <sup>2</sup>	45.97	26,219	45.97	26,052	-0.0034	0.9973
White	32.87	12,361	32.85	12,263	-0.0798	0.9364
Black & Other	71.42	13,845	71.48	13,780	0.1370	0.8910

OBESE PRIOR TO PREGNANCY						
TOTAL <sup>2</sup>	31.26	17,830	32.92	18,655	5.9792	0.0000
White	26.21	9,856	27.89	10,413	5.1746	0.0000
Black & Other	41.09	7,966	42.71	8,234	3.2289	0.0012

TOBACCO USE DURING PREGNANCY						
TOTAL <sup>2</sup>	8.40	4,791	8.20	4,646	-1.2357	0.2166
White	9.90	3,721	9.68	3,615	-0.9817	0.3262
Black & Other	5.51	1,068	5.34	1,030	-0.7215	0.4706

HISPANIC MOTHER						
TOTAL <sup>2</sup>	8.95	5,102	9.06	5,136	0.6900	0.4902
White	12.54	4,715	12.75	4,759	0.8547	0.3927
Black & Other	2.00	387	1.96	377	-0.2874	0.7738

VERY LOW BIRTHWEIGHT						
TOTAL <sup>2</sup>	1.79	1,020	1.72	975	-0.8730	0.3827
White	1.11	418	1.05	391	-0.8525	0.3939
Black & Other	3.10	600	3.02	582	-0.4342	0.6641

LOW BIRTHWEIGHT						
TOTAL <sup>2</sup>	9.68	5,521	9.61	5,443	-0.4329	0.6651
White	7.16	2,694	7.04	2,630	-0.6403	0.5220
Black & Other	14.57	2,824	14.56	2,806	-0.0328	0.9739

<sup>1</sup>Race of mother

<sup>2</sup>Includes unknown race

<sup>3</sup>Proportions are expressed as percentages

**Table 12. (continued)**

Comparison of Characteristics for All Live Births, by Race<sup>1</sup>  
 Z-tests for differences in proportions<sup>3</sup>  
 South Carolina, 2017 to 2018  
 (Residence Data)

	2017		2018		Z-TEST	P-VALUE
	Percent	Number	Percent	Number		
<b>PREMATURE BIRTHS (&lt; 37 WEEKS)</b>						
TOTAL <sup>2</sup>	11.21	6,395	11.34	6,426	0.6734	0.5007
White	9.57	3,599	9.60	3,584	0.1315	0.8954
Black & Other	14.40	2,791	14.69	2,832	0.8181	0.4133
<b>VERY PREMATURE BIRTHS (&lt; 32 WEEKS)</b>						
TOTAL <sup>2</sup>	1.92	1,093	1.91	1,085	-0.0231	0.9816
White	1.26	473	1.25	468	-0.0540	0.9569
Black & Other	3.19	618	3.19	615	0.0129	0.9897
<b>PREMATURE 32-36 WEEKS BIRTHS</b>						
TOTAL <sup>2</sup>	9.30	5,302	9.43	5,341	0.7421	0.4580
White	8.31	3,126	8.35	3,116	0.1618	0.8714
Black & Other	11.21	2,173	11.50	2,217	0.9019	0.3671
<b>KOTELCHUCK INDEX: ADEQUATE, ADEQUATE PLUS</b>						
TOTAL <sup>2</sup>	76.52	43,638	76.69	43,456	0.6676	0.5044
White	78.62	29,561	79.14	29,545	1.7416	0.0816
Black & Other	72.49	14,052	72.01	13,882	-1.0446	0.2962
<b>KOTELCHUCK INDEX: INADEQUATE</b>						
TOTAL <sup>2</sup>	17.66	10,074	17.56	9,952	-0.4534	0.6502
White	15.67	5,893	15.37	5,740	-1.1253	0.2605
Black & Other	21.51	4,169	21.74	4,191	0.5603	0.5753
<b>&lt; 5 PRENATAL CARE VISITS</b>						
TOTAL <sup>2</sup>	5.57	3,178	6.06	3,434	3.5108	0.0004
White	4.68	1,759	5.11	1,909	2.7610	0.0058
Black & Other	7.29	1,413	7.85	1,514	2.0990	0.0358
<b>PRENATAL CARE BEGAN FIRST TRIMESTER</b>						
TOTAL <sup>2</sup>	71.44	40,740	73.03	41,385	6.0026	0.0000
White	74.14	27,877	75.80	28,300	5.2550	0.0000
Black & Other	66.24	12,841	67.75	13,060	3.1511	0.0016

<sup>1</sup>Race of mother<sup>2</sup>Includes unknown race<sup>3</sup>Proportions are expressed as percentages



**Table 12-A.**

Comparison of Characteristics of Infants who Died, by Race<sup>1</sup>  
 Z-tests for differences in proportions<sup>3</sup>  
 South Carolina, 2017 to 2018  
 (Residence Data)

	2017		2018		Z-TEST	P-VALUE
	Percent	Number	Percent	Number		
<b>MOTHER &lt; 18 YEARS</b>						
TOTAL <sup>2</sup>	2.16	8	2.96	12	0.7028	0.4822
White	1.53	3	1.04	2	-0.4269	0.6694
Black & Other	2.87	5	4.67	10	0.9143	0.3605
<b>MARITAL STATUS: UNMARRIED</b>						
TOTAL <sup>2</sup>	59.84	222	58.62	238	-0.3449	0.7301
White	47.96	94	38.54	74	-1.8718	0.0612
Black & Other	73.56	128	76.64	164	0.6975	0.4855
<b>OBESE PRIOR TO PREGNANCY</b>						
TOTAL <sup>2</sup>	36.93	137	41.87	170	1.4083	0.1591
White	29.59	58	33.85	65	0.9021	0.3670
Black & Other	45.40	79	49.07	105	0.7187	0.4723
<b>TOBACCO USE DURING PREGNANCY</b>						
TOTAL <sup>2</sup>	14.29	53	10.34	42	-1.6749	0.0939
White	18.88	37	14.58	28	-1.1325	0.2574
Black & Other	9.20	16	6.54	14	-0.9732	0.3305
<b>HISPANIC MOTHER</b>						
TOTAL <sup>2</sup>	8.89	33	7.14	29	-0.9002	0.3680
White	14.80	29	11.98	23	-0.8143	0.4155
Black & Other	2.30	4	2.80	6	0.3121	0.7549
<b>VERY LOW BIRTHWEIGHT</b>						
TOTAL <sup>2</sup>	50.40	187	50.00	203	-0.1126	0.9104
White	40.82	80	41.67	80	0.1701	0.8649
Black & Other	61.49	107	57.48	123	-0.8011	0.4231
<b>LOW BIRTHWEIGHT</b>						
TOTAL <sup>2</sup>	65.77	244	66.01	268	0.0710	0.9434
White	58.16	114	58.85	113	0.1381	0.8902
Black & Other	74.71	130	72.43	155	-0.5064	0.6126

<sup>1</sup>Race of mother

<sup>2</sup>Includes unknown race

<sup>3</sup>Proportions are expressed as percentages

**Table 12-A. (continued)**

Comparison of Characteristics of Infants who Died, by Race<sup>1</sup>  
 Z-tests for differences in proportions<sup>3</sup>  
 South Carolina, 2017 to 2018  
 (Residence Data)

	2017		2018		Z-TEST	P-VALUE
	Percent	Number	Percent	Number		

PREMATURE BIRTHS (< 37 WEEKS)						
TOTAL <sup>2</sup>	65.23	242	68.47	278	0.9599	0.3371
White	57.14	112	64.06	123	1.3944	0.1632
Black & Other	74.71	130	72.43	155	-0.5064	0.6126

VERY PREMATURE BIRTHS (< 32 WEEKS)						
TOTAL <sup>2</sup>	51.21	190	51.72	210	0.1424	0.8868
White	40.31	79	43.23	83	0.5837	0.5594
Black & Other	63.79	111	59.35	127	-0.8947	0.3710

PREMATURE 32-36 WEEKS BIRTHS						
TOTAL <sup>2</sup>	14.02	52	16.75	68	1.0528	0.2924
White	16.84	33	20.83	40	1.0071	0.3139
Black & Other	10.92	19	13.08	28	0.6499	0.5158

KOTELCHUCK INDEX: ADEQUATE, ADEQUATE PLUS						
TOTAL <sup>2</sup>	65.23	242	64.29	261	-0.2749	0.7834
White	67.86	133	64.06	123	-0.7888	0.4302
Black & Other	62.64	109	64.49	138	0.3752	0.7075

KOTELCHUCK INDEX: INADEQUATE						
TOTAL <sup>2</sup>	26.68	99	27.59	112	0.2822	0.7778
White	26.53	52	27.08	52	0.1229	0.9022
Black & Other	27.01	47	28.04	60	0.2249	0.8221

< 5 PRENATAL CARE VISITS						
TOTAL <sup>2</sup>	29.65	110	27.34	111	-0.7128	0.4760
White	26.53	52	21.35	41	-1.1942	0.2324
Black & Other	33.33	58	32.71	70	-0.1298	0.8967

PRENATAL CARE BEGAN FIRST TRIMESTER						
TOTAL <sup>2</sup>	61.99	230	59.61	242	-0.6811	0.4958
White	62.76	123	60.42	116	-0.4735	0.6359
Black & Other	61.49	107	58.88	126	-0.5232	0.6009

<sup>1</sup>Race of mother

<sup>2</sup>Includes unknown race

<sup>3</sup>Proportions are expressed as percentages

**Table 13.**  
**Multiple Births Trends**  
**South Carolina, 2014-2018**  
**(Residence Data)**

Year	Singleton Births	Singleton Deaths	Infant Mortality Rate <sup>1</sup>	Twin Births	Twin Deaths	Infant Mortality Rate <sup>1</sup>	Higher Order (3+) Births	Higher Order (3+) Deaths	Infant Mortality Rate <sup>1</sup>	Total Births <sup>2</sup>	Total Deaths <sup>2</sup>	Infant Mortality Rate <sup>1</sup>
2014	55,548	324	5.8	2,030	44	21.7	53	4	75.5	57,631	372	6.5
2015	56,006	352	6.3	2,085	48	23.0	44	5	113.6	58,135	405	7.0
2016	55,197	344	6.2	2,063	51	24.7	77	6	77.9	57,337	401	7.0
2017	55,028	319	5.8	1,950	42	21.5	52	4	76.9	57,030	371	6.5
2018	54,784	352	6.4	1,860	49	26.3	24	4	166.7	56,668	406	7.2
Total	276,563	1,691	6.1	9,988	234	23.4	250	23	92.0	286,801	1,955	6.8

<sup>1</sup>Rates are per 1,000 births. Rates calculated with 20 or fewer deaths are unreliable and should be used cautiously

<sup>2</sup>Includes unknown plurality

**Table 14.**  
**Infant Mortality Rates<sup>1</sup> by Race<sup>2</sup> and Birthweight<sup>3</sup> Group**  
**South Carolina**  
**2016, 2017, and 2018**  
**(Residence Data)**

<b>Infant Mortality for Very Low Birthweight (0-1499 grams)</b>									
	Total			White			Black & Other		
Year	Number of Live Births	Number of Infant Deaths	Rate	Number of Live Births	Number of Infant Deaths	Rate	Number of Live Births	Number of Infant Deaths	Rate
2016	1,037*	203	195.8	457	89	194.7	577	114	197.6
2017	1,020*	187	183.3	418	80	191.4	600	107	178.3
2018	975*	203	208.2	391	80	204.6	582	123	211.3

<b>Infant Mortality for Intermediate Low Birthweight (1500-2499 grams)</b>									
	Total			White			Black & Other		
Year	Number of Live Births	Number of Infant Deaths	Rate	Number of Live Births	Number of Infant Deaths	Rate	Number of Live Births	Number of Infant Deaths	Rate
2016	4,460*	61	13.7	2,353	35	14.9	2,105	27	12.8
2017	4,501*	57	12.7	2,276	34	14.9	2,224	23	10.3
2018	4,468*	65	14.5	2,239	33	14.7	2,224	32	14.4

<b>Infant Mortality for Normal Birthweight (2500+ grams)</b>									
	Total			White			Black & Other		
Year	Number of Live Births	Number of Infant Deaths	Rate	Number of Live Births	Number of Infant Deaths	Rate	Number of Live Births	Number of Infant Deaths	Rate
2016	51,834*	132	2.5	35,450	82	2.3	16,343	50	3.1
2017	51,503*	121	2.3	34,903	81	2.3	16,561	40	2.4
2018	51,215*	132	2.6	34,697	74	2.1	16,469	58	3.5

<sup>1</sup>Rates per 1,000 live births

<sup>2</sup>Race of mother

<sup>3</sup>Does not include missing birthweight

\*Includes unknown race

**Table 14-A.**  
 Neonatal Mortality Rates<sup>1</sup> by Race<sup>2</sup> and Birthweight<sup>3</sup> Group  
 South Carolina  
 2016, 2017, and 2018  
 (Residence Data)

<b>Neonatal Mortality for Very Low Birthweight (0-1499 grams)</b>									
	Total			White			Black & Other		
Year	Number of Live Births	Number of Infant Deaths	Rate	Number of Live Births	Number of Infant Deaths	Rate	Number of Live Births	Number of Infant Deaths	Rate
2016	1,037*	176	169.7	457	71	155.4	577	105	182.0
2017	1,020*	158	154.9	418	67	160.3	600	91	151.7
2018	975*	176	180.5	391	66	168.8	582	110	189.0

<b>Neonatal Mortality for Intermediate Low Birthweight (1500-2499 grams)</b>									
	Total			White			Black & Other		
Year	Number of Live Births	Number of Infant Deaths	Rate	Number of Live Births	Number of Infant Deaths	Rate	Number of Live Births	Number of Infant Deaths	Rate
2016	4,460*	29	6.5	2,353	16	6.8	2,105	13	6.2
2017	4,501*	33	7.3	2,276	24	10.5	2,224	9	4.0
2018	4,468*	42	9.4	2,239	25	11.2	2,224	17	7.6

<b>Neonatal Mortality for Normal Birthweight (2500+ grams)</b>									
	Total			White			Black & Other		
Year	Number of Live Births	Number of Infant Deaths	Rate	Number of Live Births	Number of Infant Deaths	Rate	Number of Live Births	Number of Infant Deaths	Rate
2016	51,834*	31	0.6	35,450	16	0.4	16,343	15	0.9
2017	51,503*	46	0.9	34,903	28	0.8	16,561	18	1.1
2018	51,215*	50	1.0	34,697	34	1.0	16,469	16	1.0

<sup>1</sup>Rates per 1,000 live births

<sup>2</sup>Race of mother

<sup>3</sup>Does not include missing birthweight

\*Includes unknown race

**Table 14-B.**  
 Postneonatal Mortality Rates<sup>1</sup> by Race<sup>2</sup> and Birthweight<sup>3</sup> Group  
 South Carolina  
 2016, 2017, and 2018  
 (Residence Data)

<b>Postneonatal Mortality for Very Low Birthweight (0-1499 grams)</b>									
	Total			White			Black & Other		
Year	Number of Live Births	Number of Infant Deaths	Rate	Number of Live Births	Number of Infant Deaths	Rate	Number of Live Births	Number of Infant Deaths	Rate
2016	1,037*	27	26.0	457	18	37.7	577	9	15.6
2017	1,020*	29	28.4	418	13	31.1	600	16	26.7
2018	975*	27	27.7	391	14	39.4	582	13	15.6

<b>Postneonatal Mortality for Intermediate Low Birthweight (1500-2499 grams)</b>									
	Total			White			Black & Other		
Year	Number of Live Births	Number of Infant Deaths	Rate	Number of Live Births	Number of Infant Deaths	Rate	Number of Live Births	Number of Infant Deaths	Rate
2016	4,460*	33	7.4	2,353	19	8.1	2,105	14	6.7
2017	4,501*	24	5.3	2,276	10	4.4	2,224	14	6.3
2018	4,468*	23	5.1	2,239	8	3.6	2,224	15	6.7

<b>Postneonatal Mortality for Normal Birthweight (2500+ grams)</b>									
	Total			White			Black & Other		
Year	Number of Live Births	Number of Infant Deaths	Rate	Number of Live Births	Number of Infant Deaths	Rate	Number of Live Births	Number of Infant Deaths	Rate
2016	51,834*	86	1.7	35,450	54	1.5	16,343	32	2.0
2017	51,503*	75	1.5	34,903	51	1.5	16,561	24	1.4
2018	51,215*	82	1.6	34,697	40	1.2	16,469	42	2.6

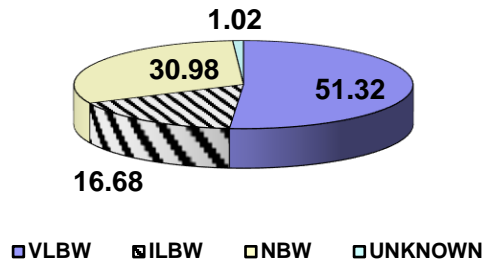
<sup>1</sup>Rates per 1,000 live births

<sup>2</sup>Race of mother

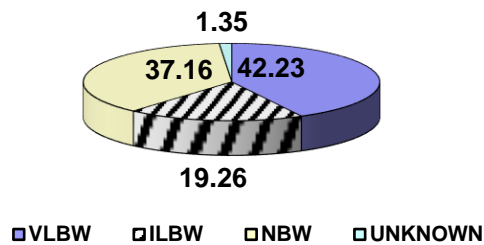
<sup>3</sup>Does not include missing birthweight

\*Includes unknown race

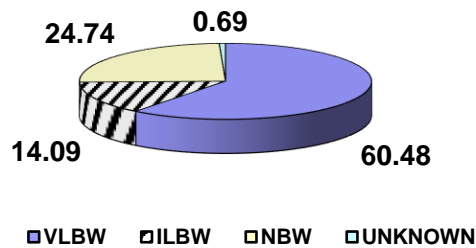
**Figure 1.**  
**Percentage of Infant Deaths by Birthweight Group**  
**South Carolina, 2016-2018 Residence Data**



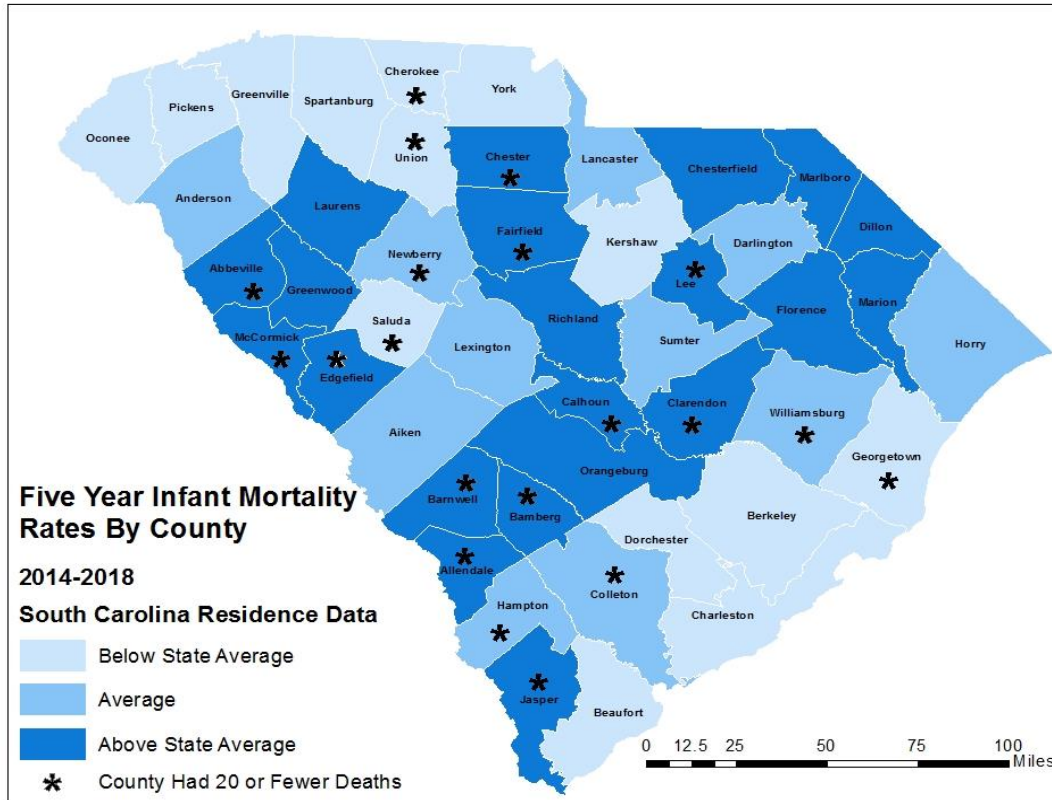
**Figure 1-A.**  
**Percentage of White Infant Deaths by Birthweight Group**  
**South Carolina, 2016-2018 Residence Data**



**Figure 1-B.**  
**Percentage of Black and Other Infant Deaths by Birthweight Group**  
**South Carolina, 2016-2018**  
**Residence Data**



**Figure 2.**  
**Five Year Infant Mortality Rates<sup>1</sup> by County**  
**South Carolina**  
**2014-2018**  
**(Residence Data)**



**Above State Average** indicates a rate greater than 7.9.  
**State Average** indicates a rate between 6.5 and 7.9 inclusive.  
**Below State Average** indicates a rate lower than 6.5.

<sup>1</sup>Rate per 1,000 live births. Rates calculated with 20 or fewer deaths are unreliable and should be used cautiously.