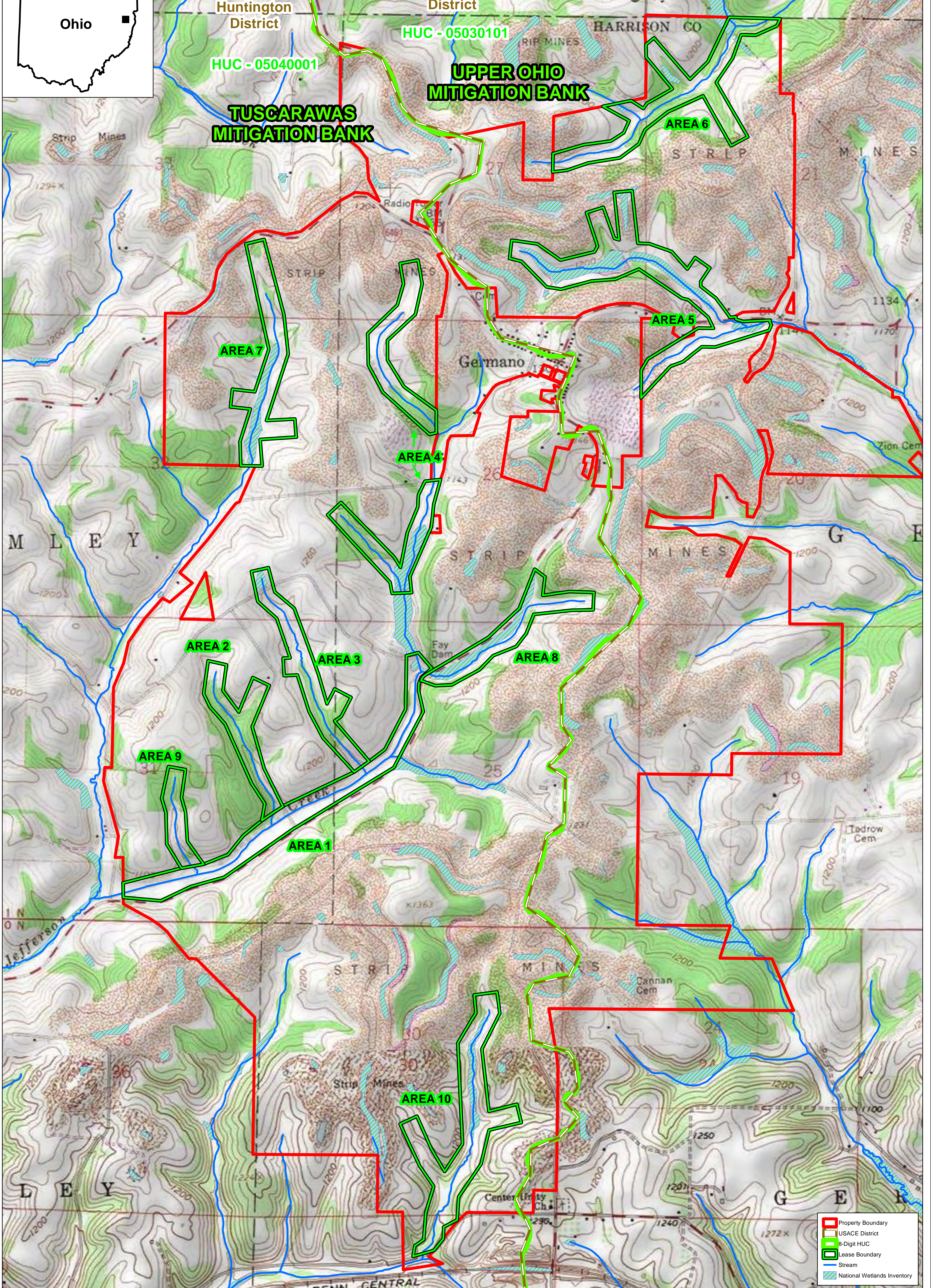
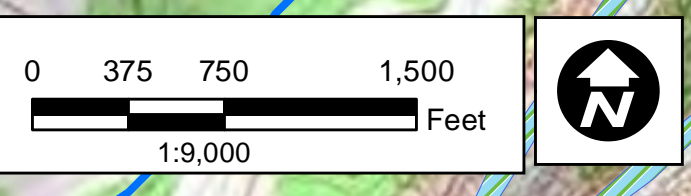




Public Notice: 17-15

EXHIBIT 1



- Property Boundary
- USACE District
- 8-Digit HUC
- Lease Boundary
- Stream
- National Wetlands Inventory

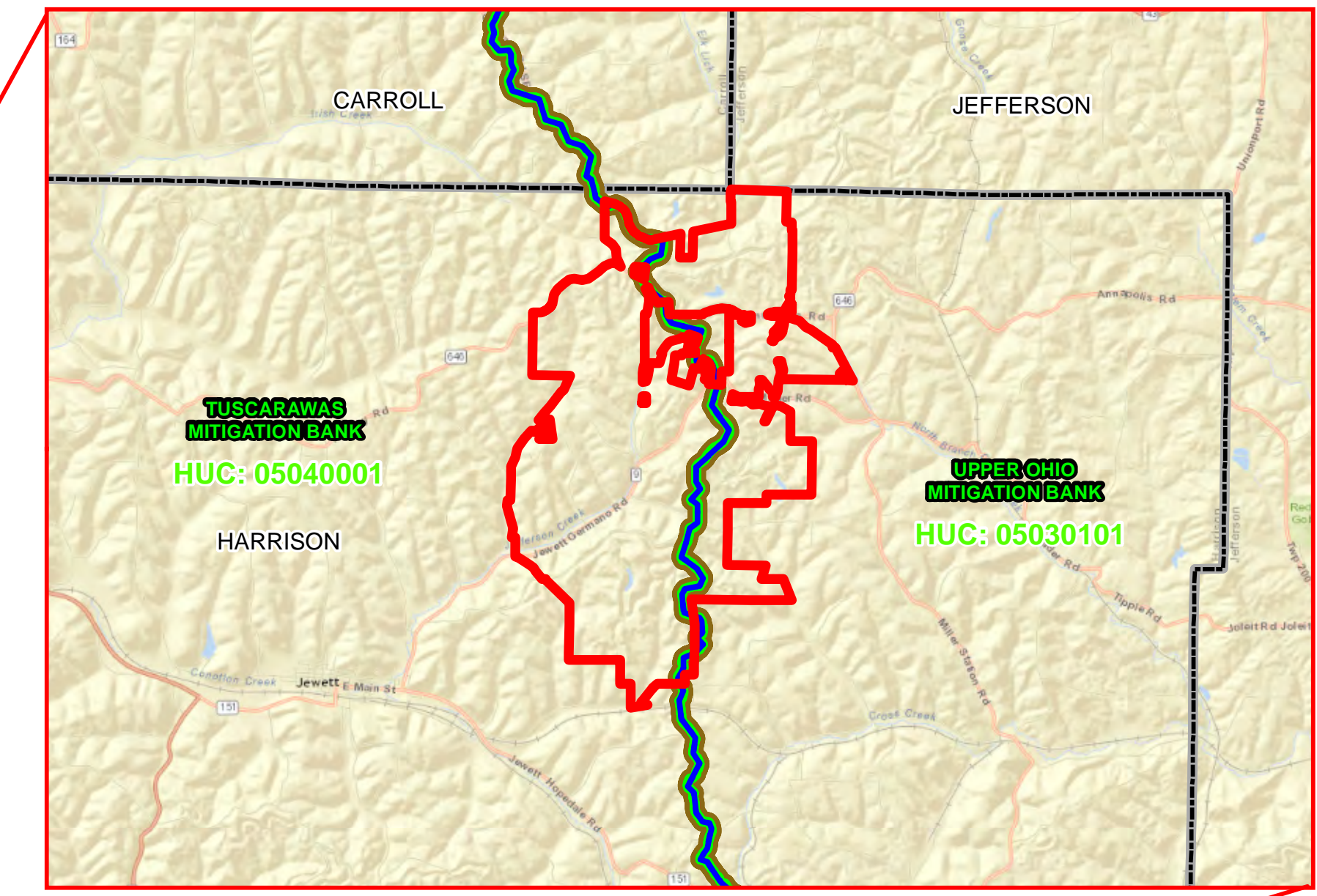
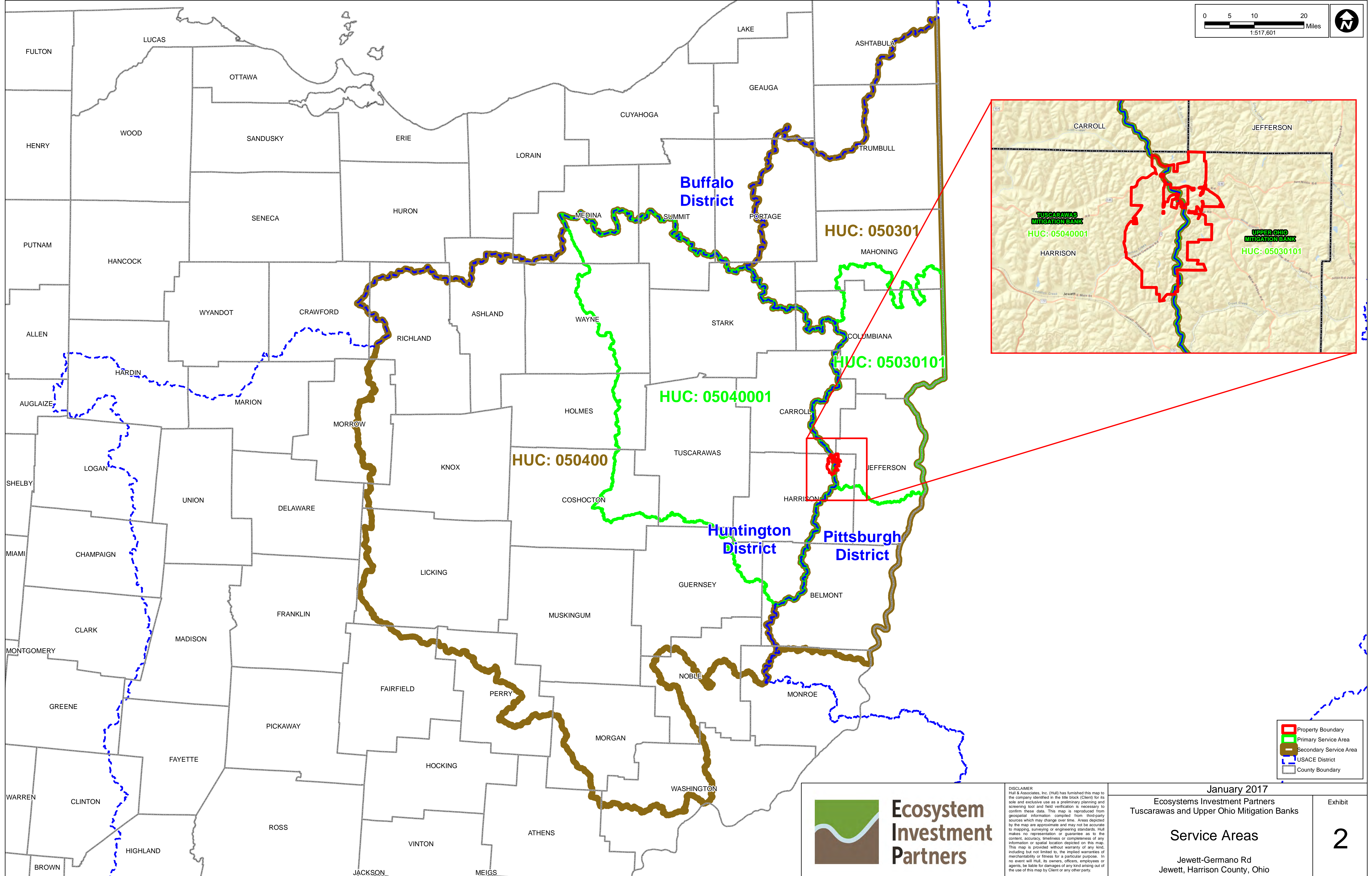
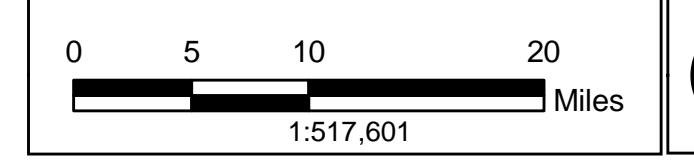


DISCLAIMER
Hull & Associates, Inc. (Hull) has furnished this map to the company identified in the title block (Client) for its sole and exclusive use as a preliminary planning and screening tool and field verification is necessary to confirm these data. This map is reproduced from geospatial information compiled from third-party sources which may change over time. Areas depicted by the map are approximate and may not be accurate to mapping, surveying or engineering standards. Hull makes no representation or guarantee as to the content, accuracy, timeliness or completeness of any information or spatial location depicted on this map. This map is provided without warranty of any kind, including but not limited to, the implied warranties of merchantability or fitness for a particular purpose. In no event will Hull, its directors, officers, employees or agents, be liable for damages of any kind arising out of the use of this map by Client or any other party.

| | | |
|--|--|---------------------|
| January 2017 | | Exhibit 1 |
| Ecosystems Investment Partners Tuscarawas and Upper Ohio Mitigation Banks | | |
| Site Location and Lease Areas | | |
| Jewett-Germano Rd Jewett, Harrison County, Ohio | | |



EXHIBIT 2



- Property Boundary
- Primary Service Area
- Secondary Service Area
- USACE District
- County Boundary



DISCLAIMER
Hull & Associates, Inc. (Hull) has furnished this map to the company identified in the title block (Client) for its sole and exclusive use as a preliminary planning and screening tool and field verification is necessary to confirm these data. This map is reproduced from geospatial information compiled from third-party sources which may change over time. Areas depicted by the map are approximate and may not be accurate to mapping, surveying or engineering standards. Hull makes no representation or guarantee as to the content, accuracy, timeliness or completeness of any information or spatial location depicted on this map. This map is provided without warranty of any kind, including but not limited to, the implied warranties of merchantability or fitness for a particular purpose. In no event will Hull, its owners, officers, employees or agents, be liable for damages of any kind arising out of the use of this map by Client or any other party.

January 2017
Ecosystems Investment Partners
Tuscarawas and Upper Ohio Mitigation Banks

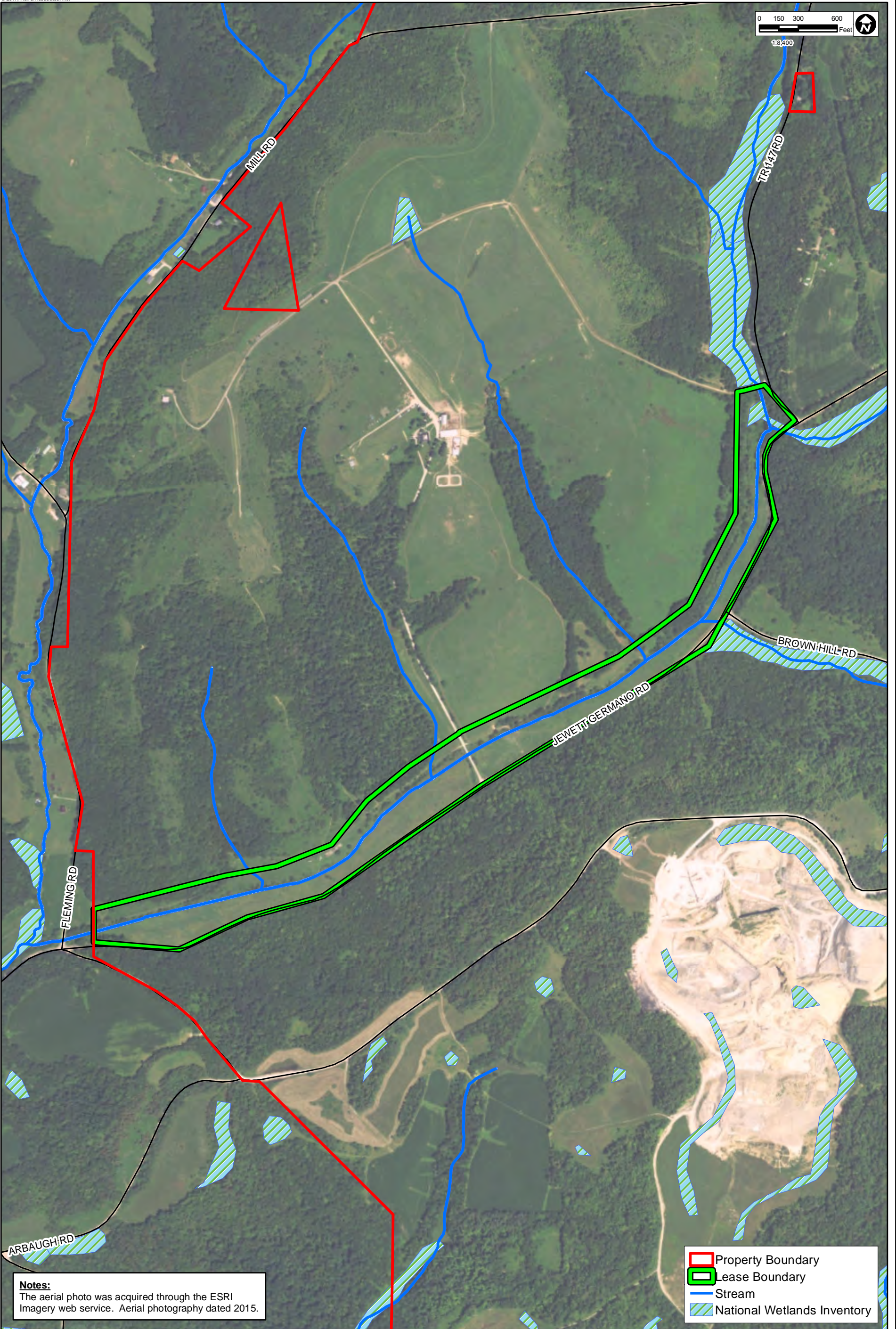
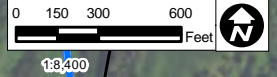
Service Areas

Jewett-Germano Rd
Jewett, Harrison County, Ohio





Exhibit
2



EXHIBIT 3



Notes:
The aerial photo was acquired through the ESRI Imagery web service. Aerial photography dated 2015.

-  Property Boundary
-  Lease Boundary
-  Stream
-  National Wetlands Inventory



**Ecosystem
Investment
Partners**

DISCLAIMER

Hull & Associates, Inc. (Hull) has furnished this map to the company identified in the title block (Client) for its sole and exclusive use as a preliminary planning and screening tool and field verification is necessary to confirm these data. This map is reproduced from geospatial information compiled from third-party sources which may change over time. Areas depicted by the map are approximate and may not be accurate to mapping, surveying or engineering standards. Hull makes no representation or guarantee as to the content, accuracy, timeliness or completeness of any information or spatial location depicted on this map. This map is provided without warranty of any kind, including but not limited to, the implied warranties of merchantability or fitness for a particular purpose. In no event will Hull, its owners, officers, employees or agents, be liable for damages of any kind arising out of the use of this map by Client or any other party.

January 2017

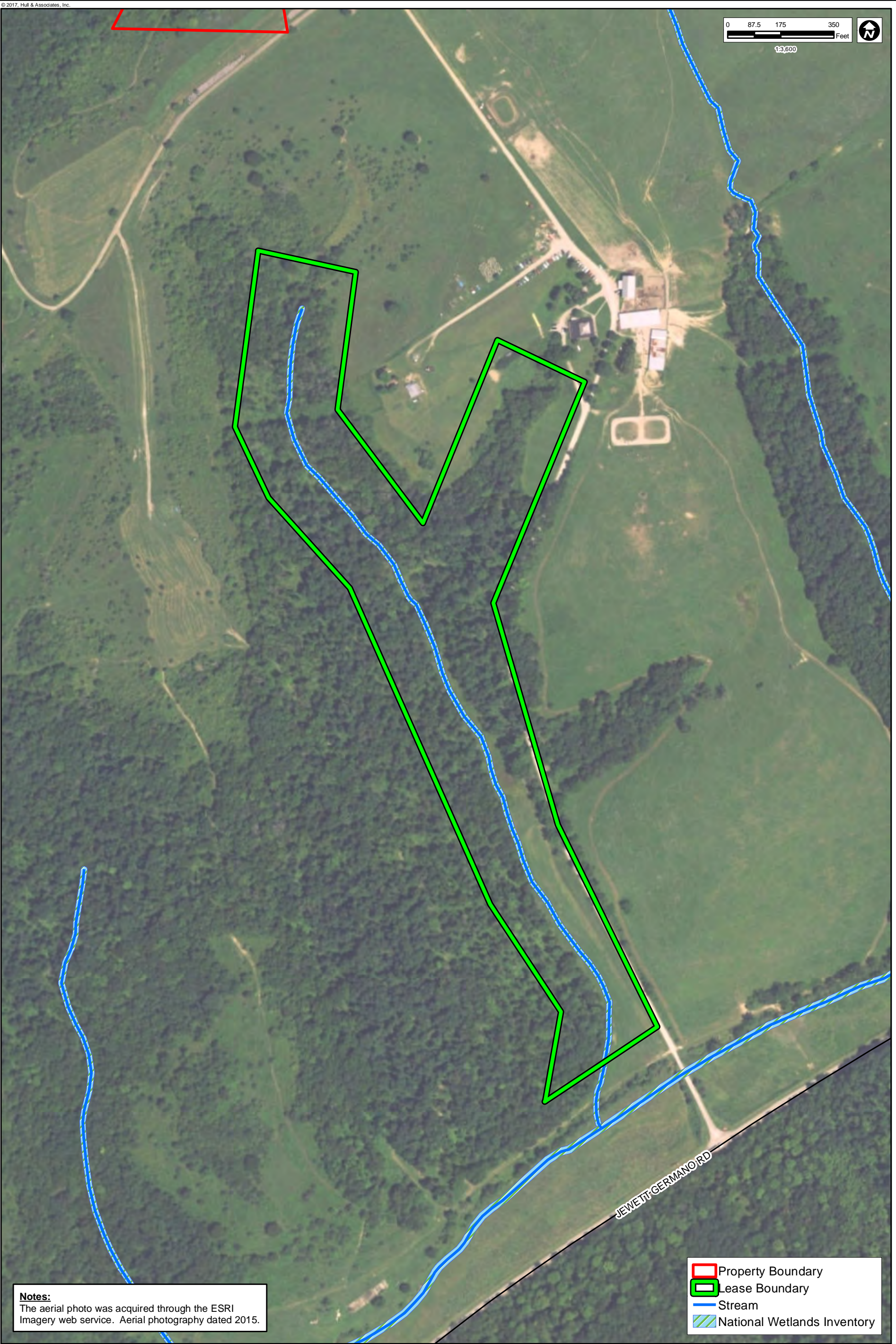
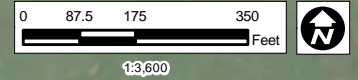
Ecosystems Investment Partners
Tuscarawas Mitigation Bank

Area 1
USACE Huntington District





Jewett-Germano Rd
Jewett, Harrison County, Ohio

Exhibit

3a-1



Notes:
The aerial photo was acquired through the ESRI Imagery web service. Aerial photography dated 2015.

-  Property Boundary
-  Lease Boundary
-  Stream
-  National Wetlands Inventory



**Ecosystem
Investment
Partners**

DISCLAIMER

Hull & Associates, Inc. (Hull) has furnished this map to the company identified in the title block (Client) for its sole and exclusive use as a preliminary planning and screening tool and field verification is necessary to confirm these data. This map is reproduced from geospatial information compiled from third-party sources which may change over time. Areas depicted by the map are approximate and may not be accurate to mapping, surveying or engineering standards. Hull makes no representation or guarantee as to the content, accuracy, timeliness or completeness of any information or spatial location depicted on this map. This map is provided without warranty of any kind, including but not limited to, the implied warranties of merchantability or fitness for a particular purpose. In no event will Hull, its owners, officers, employees or agents, be liable for damages of any kind arising out of the use of this map by Client or any other party.

January 2017

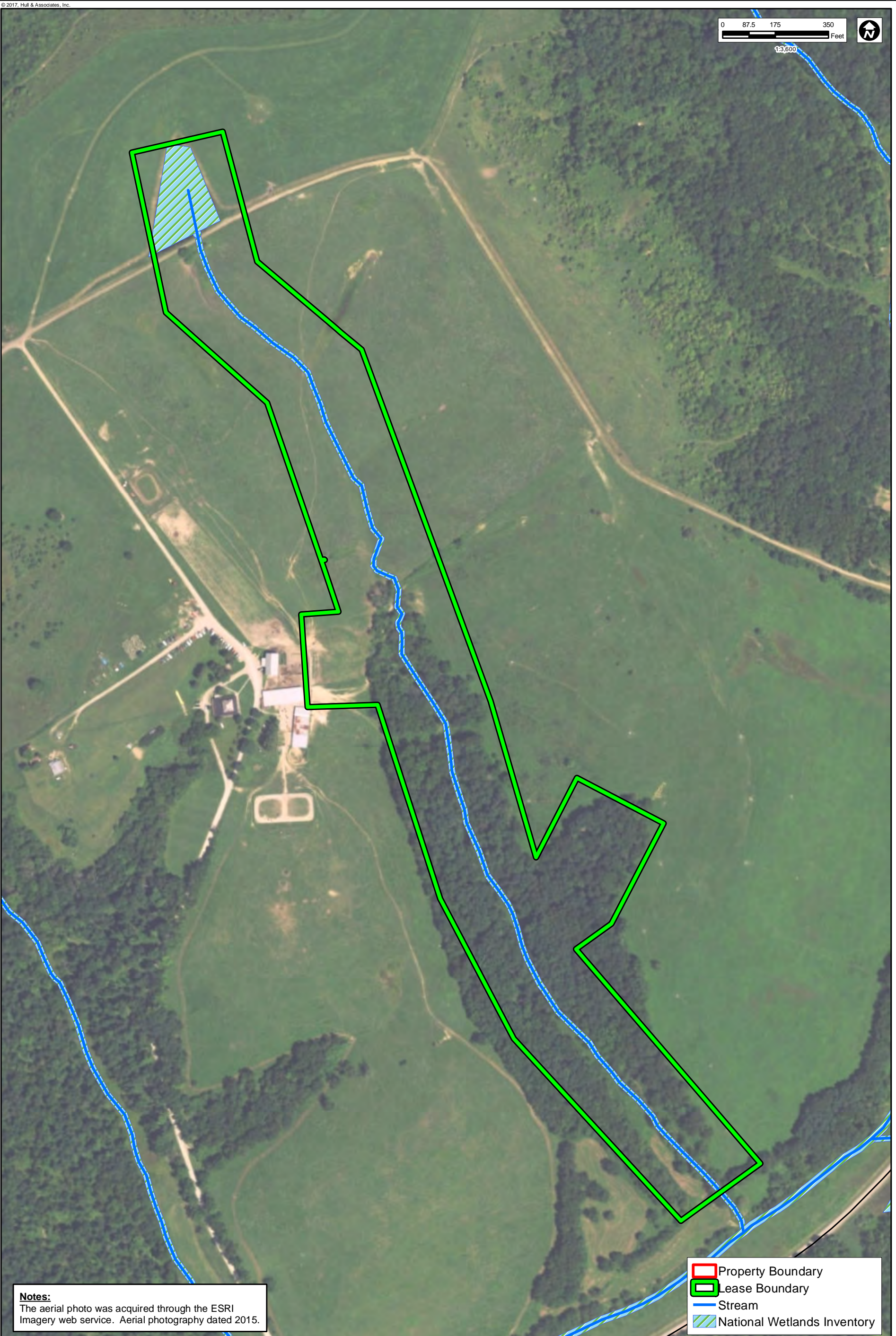
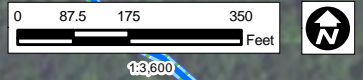
Ecosystems Investment Partners
Tuscarawas Mitigation Bank

Area 2
USACE Huntington District





Jewett-Germano Rd
Jewett, Harrison County, Ohio

Exhibit

3a-2



Notes:
The aerial photo was acquired through the ESRI Imagery web service. Aerial photography dated 2015.

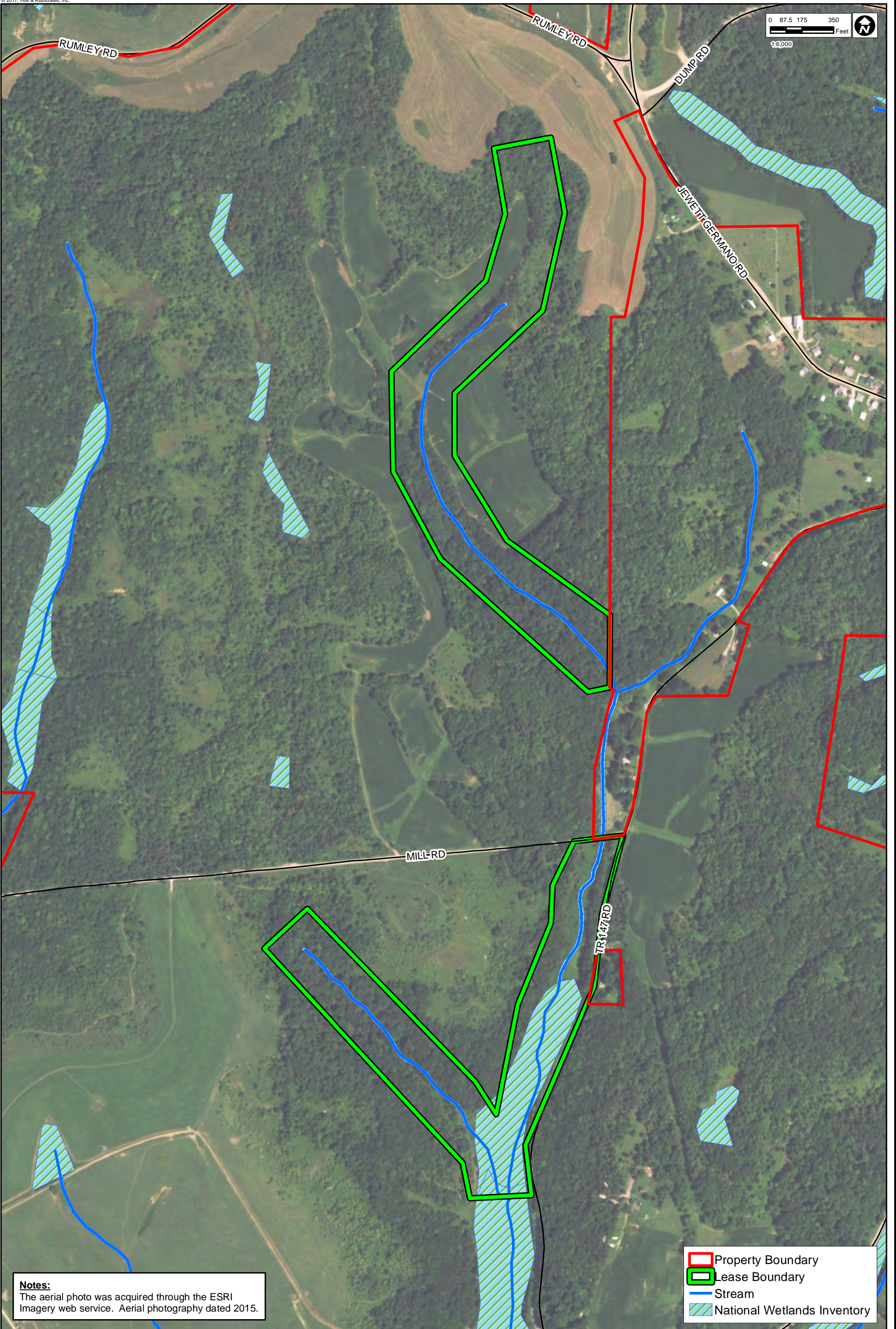
-  Property Boundary
-  Lease Boundary
-  Stream
-  National Wetlands Inventory







DISCLAIMER
Hull & Associates, Inc. (Hull) has furnished this map to the company identified in the title block (Client) for its sole and exclusive use as a preliminary planning and screening tool and field verification is necessary to confirm these data. This map is reproduced from geospatial information compiled from third-party sources which may change over time. Areas depicted by the map are approximate and may not be accurate to mapping, surveying or engineering standards. Hull makes no representation or guarantee as to the content, accuracy, timeliness or completeness of any information or spatial location depicted on this map. This map is provided without warranty of any kind, including but not limited to, the implied warranties of merchantability or fitness for a particular purpose. In no event will Hull, its owners, officers, employees or agents, be liable for damages of any kind arising out of the use of this map by Client or any other party.

January 2017
Ecosystems Investment Partners
Tuscarawas Mitigation Bank
Area 3
USACE Huntington District
Jewett-Germano Rd
Jewett, Harrison County, Ohio

Exhibit
3a-3



Notes:
The aerial photo was acquired through the ESRI Imagery web service. Aerial photography dated 2015.

-  Property Boundary
-  Lease Boundary
-  Stream
-  National Wetlands Inventory



Ecosystem Investment Partners

DISCLAIMER
Hull & Associates, Inc. (Hull) has furnished this map to the company identified in the title block (Client) for its sole and exclusive use as a preliminary planning and screening tool and field verification is necessary to confirm these data. This map is reproduced from geospatial information compiled from third-party sources which may change over time. Areas depicted by the map are approximate and may not be accurate to mapping, surveying or engineering standards. Hull makes no representation or guarantee as to the content, accuracy, timeliness or completeness of any information or spatial location depicted on this map. This map is provided without warranty of any kind, including but not limited to, the implied warranties of merchantability or fitness for a particular purpose. In no event will Hull, its owners, officers, employees or agents, be liable for damages of any kind arising out of the use of this map by Client or any other party.

January 2017

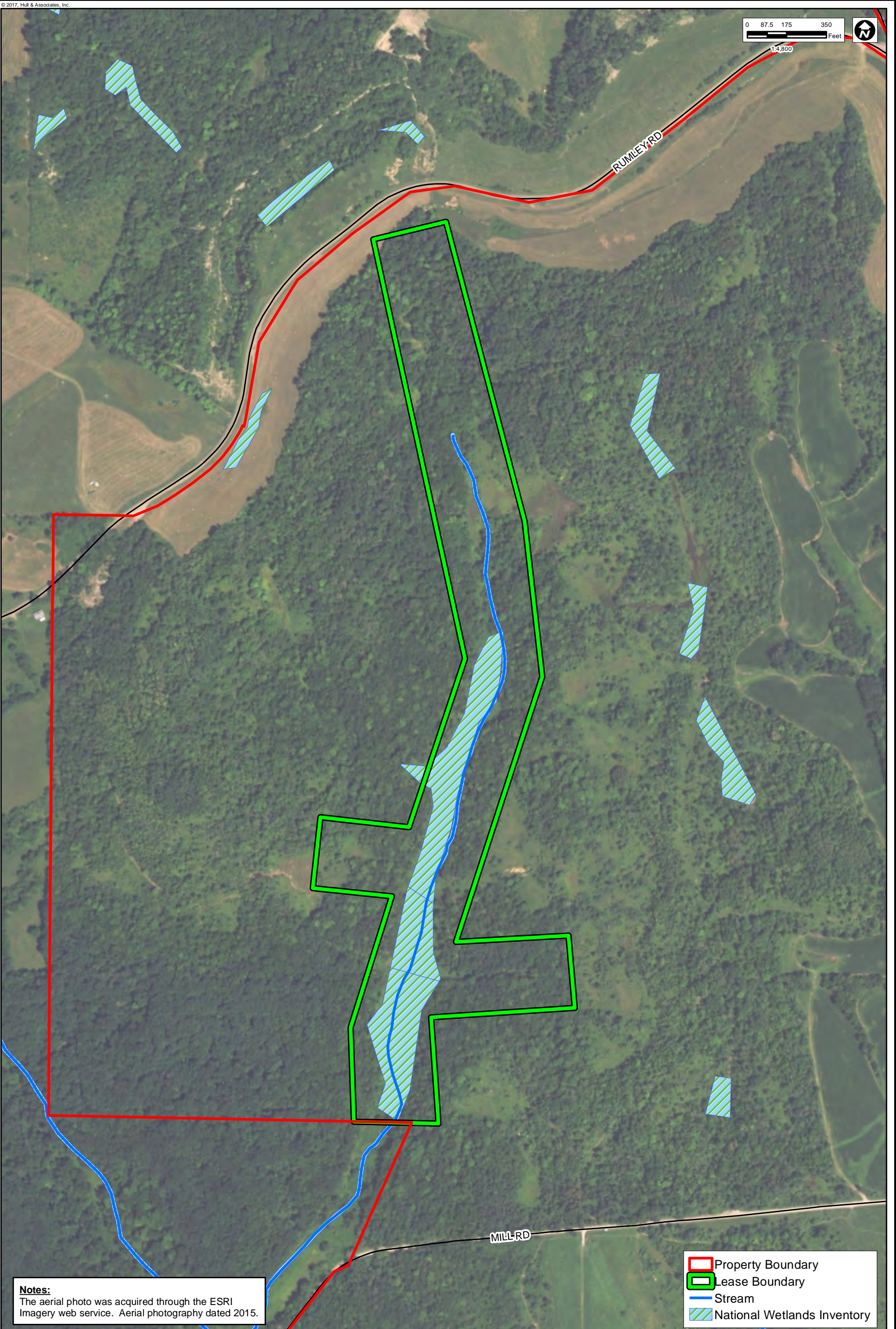
Ecosystems Investment Partners
Tuscarawas Mitigation Bank

Area 4
USACE Huntington District



Jewett-Germano Rd
Jewett, Harrison County, Ohio

Exhibit

3a-4



Notes:
The aerial photo was acquired through the ESRI Imagery web service. Aerial photography dated 2015.

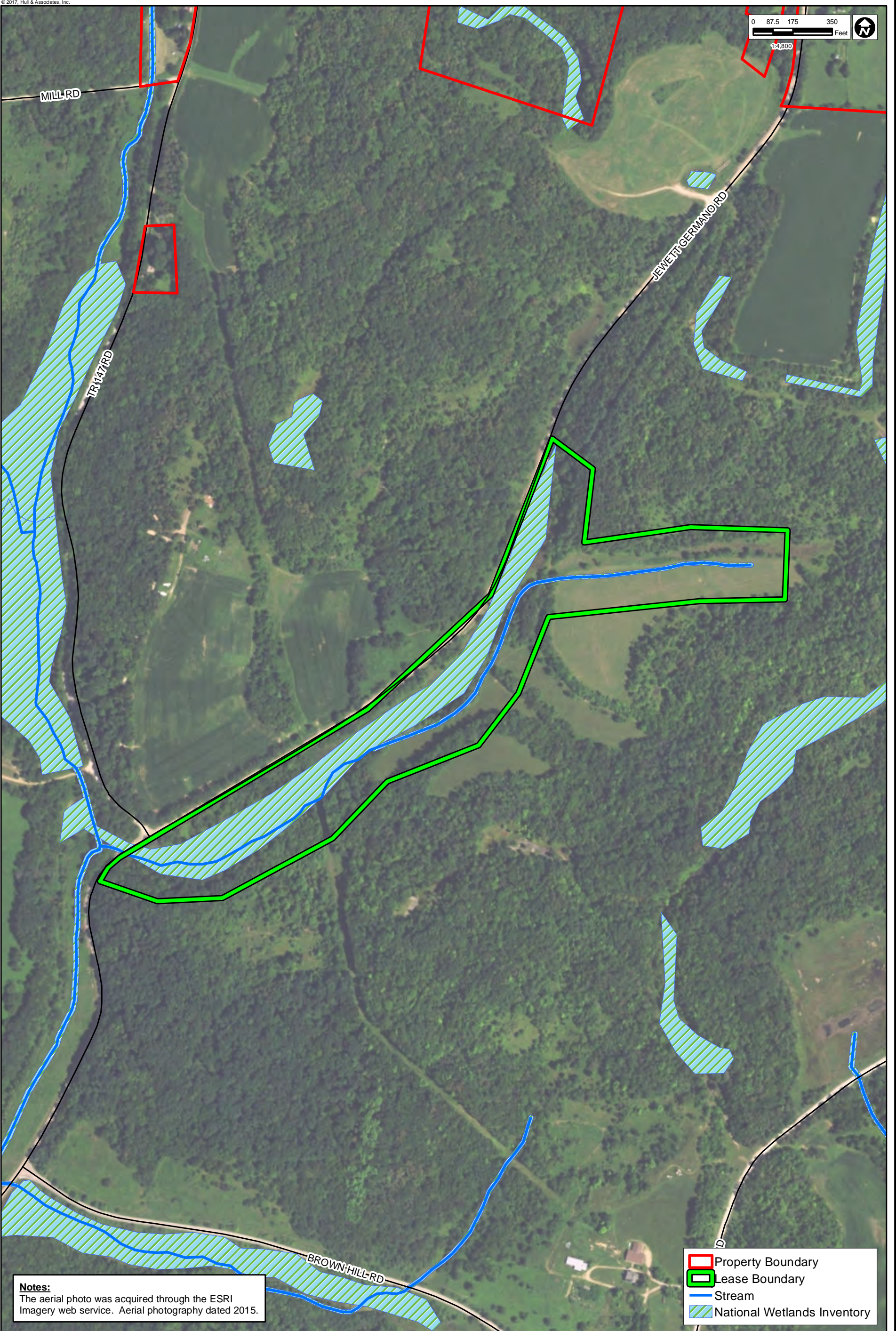
-  Property Boundary
-  Lease Boundary
-  Stream
-  National Wetlands Inventory







DISCLAIMER
Hull & Associates, Inc. (Hull) has furnished this map to the company identified in the title block (Client) for its sole and exclusive use as a preliminary planning and screening tool and field verification is necessary to confirm these data. This map is reproduced from geospatial information compiled from third-party sources which may change over time. Areas depicted by the map are approximate and may not be accurate to mapping, surveying or engineering standards. Hull makes no representation or guarantee as to the content, accuracy, timeliness or completeness of any information or spatial location depicted on this map. This map is provided without warranty of any kind, including but not limited to, the implied warranties of merchantability or fitness for a particular purpose. In no event will Hull, its owners, officers, employees or agents, be liable for damages of any kind arising out of the use of this map by Client or any other party.

January 2017
Ecosystems Investment Partners
Tuscarawas Mitigation Bank
Area 7
USACE Huntington District
Jewett-Germano Rd
Jewett, Harrison County, Ohio

Exhibit
3a-5



Notes:
The aerial photo was acquired through the ESRI Imagery web service. Aerial photography dated 2015.

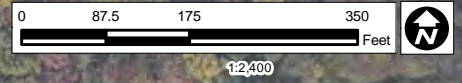
-  Property Boundary
-  Lease Boundary
-  Stream
-  National Wetlands Inventory



DISCLAIMER
Hull & Associates, Inc. (Hull) has furnished this map to the company identified in the title block (Client) for its sole and exclusive use as a preliminary planning and screening tool and field verification is necessary to confirm these data. This map is reproduced from geospatial information compiled from third-party sources which may change over time. Areas depicted by the map are approximate and may not be accurate to mapping, surveying or engineering standards. Hull makes no representation or guarantee as to the content, accuracy, timeliness or completeness of any information or spatial location depicted on this map. This map is provided without warranty of any kind, including but not limited to, the implied warranties of merchantability or fitness for a particular purpose. In no event will Hull, its owners, officers, employees or agents, be liable for damages of any kind arising out of the use of this map by Client or any other party.

January 2017
Ecosystems Investment Partners
Tuscarawas Mitigation Bank
Area 8
USACE Huntington District
Jewett-Germano Rd
Jewett, Harrison County, Ohio

Exhibit
3a-6



Notes:
 The aerial photo was acquired through the ESRI Imagery web service. Aerial photography dated 2015.

| | |
|--|-----------------------------|
| | Property Boundary |
| | Lease Boundary |
| | Stream |
| | National Wetlands Inventory |

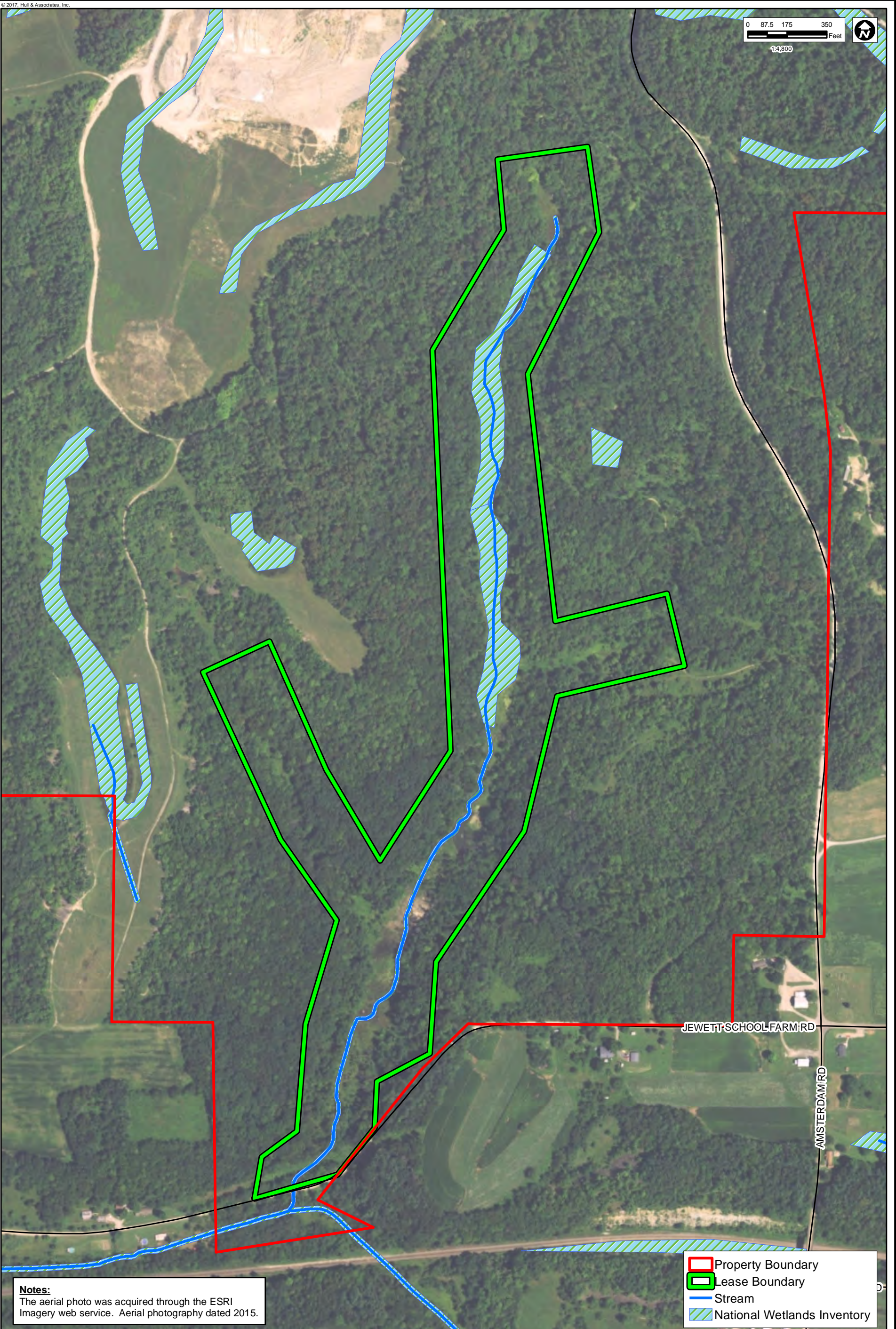
JEWETT-GERMANO RD



DISCLAIMER
 Hull & Associates, Inc. (Hull) has furnished this map to the company identified in the title block (Client) for its sole and exclusive use as a preliminary planning and screening tool and field verification is necessary to confirm these data. This map is reproduced from geospatial information compiled from third-party sources which may change over time. Areas depicted by the map are approximate and may not be accurate to mapping, surveying or engineering standards. Hull makes no representation or guarantee as to the content, accuracy, timeliness or completeness of any information or spatial location depicted on this map. This map is provided without warranty of any kind, including but not limited to, the implied warranties of merchantability or fitness for a particular purpose. In no event will Hull, its owners, officers, employees or agents, be liable for damages of any kind arising out of the use of this map by Client or any other party.

January 2017
 Ecosystems Investment Partners
 Tuscarawas Mitigation Bank
 Area 9
 USACE Huntington District
 Jewett-Germano Rd
 Jewett, Harrison County, Ohio

Exhibit
3a-7



Notes:
The aerial photo was acquired through the ESRI Imagery web service. Aerial photography dated 2015.

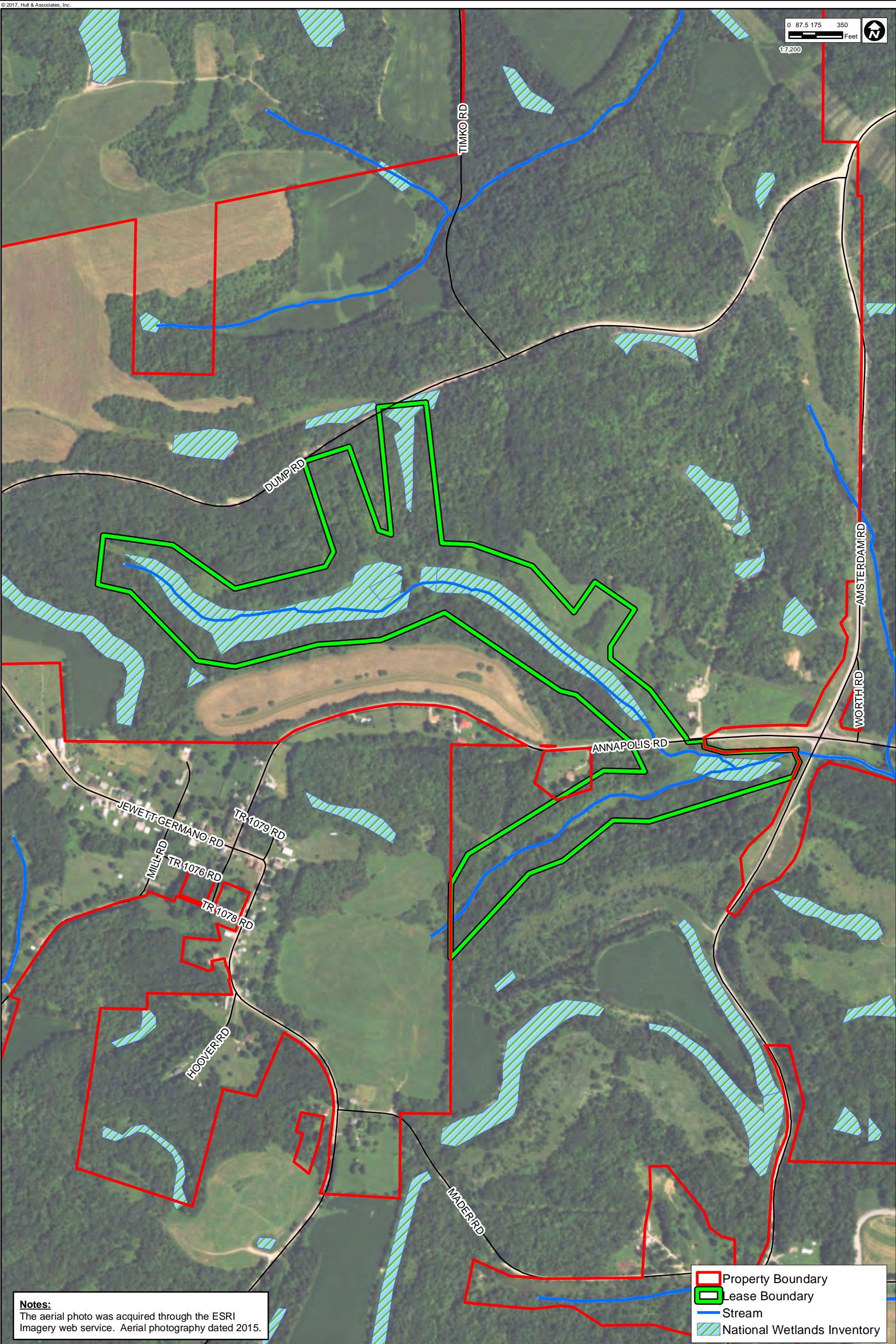
| | |
|--|-----------------------------|
| | Property Boundary |
| | Lease Boundary |
| | Stream |
| | National Wetlands Inventory |



DISCLAIMER
Hull & Associates, Inc. (Hull) has furnished this map to the company identified in the title block (Client) for its sole and exclusive use as a preliminary planning and screening tool and field verification is necessary to confirm these data. This map is reproduced from geospatial information compiled from third-party sources which may change over time. Areas depicted by the map are approximate and may not be accurate to mapping, surveying or engineering standards. Hull makes no representation or guarantee as to the content, accuracy, timeliness or completeness of any information or spatial location depicted on this map. This map is provided without warranty of any kind, including but not limited to, the implied warranties of merchantability or fitness for a particular purpose. In no event will Hull, its owners, officers, employees or agents, be liable for damages of any kind arising out of the use of this map by Client or any other party.

January 2017
Ecosystems Investment Partners
Tuscarawas Mitigation Bank
Area 10
USACE Huntington District
Jewett-Germano Rd
Jewett, Harrison County, Ohio

Exhibit
3a-8



Notes:
The aerial photo was acquired through the ESRI Imagery web service. Aerial photography dated 2015.

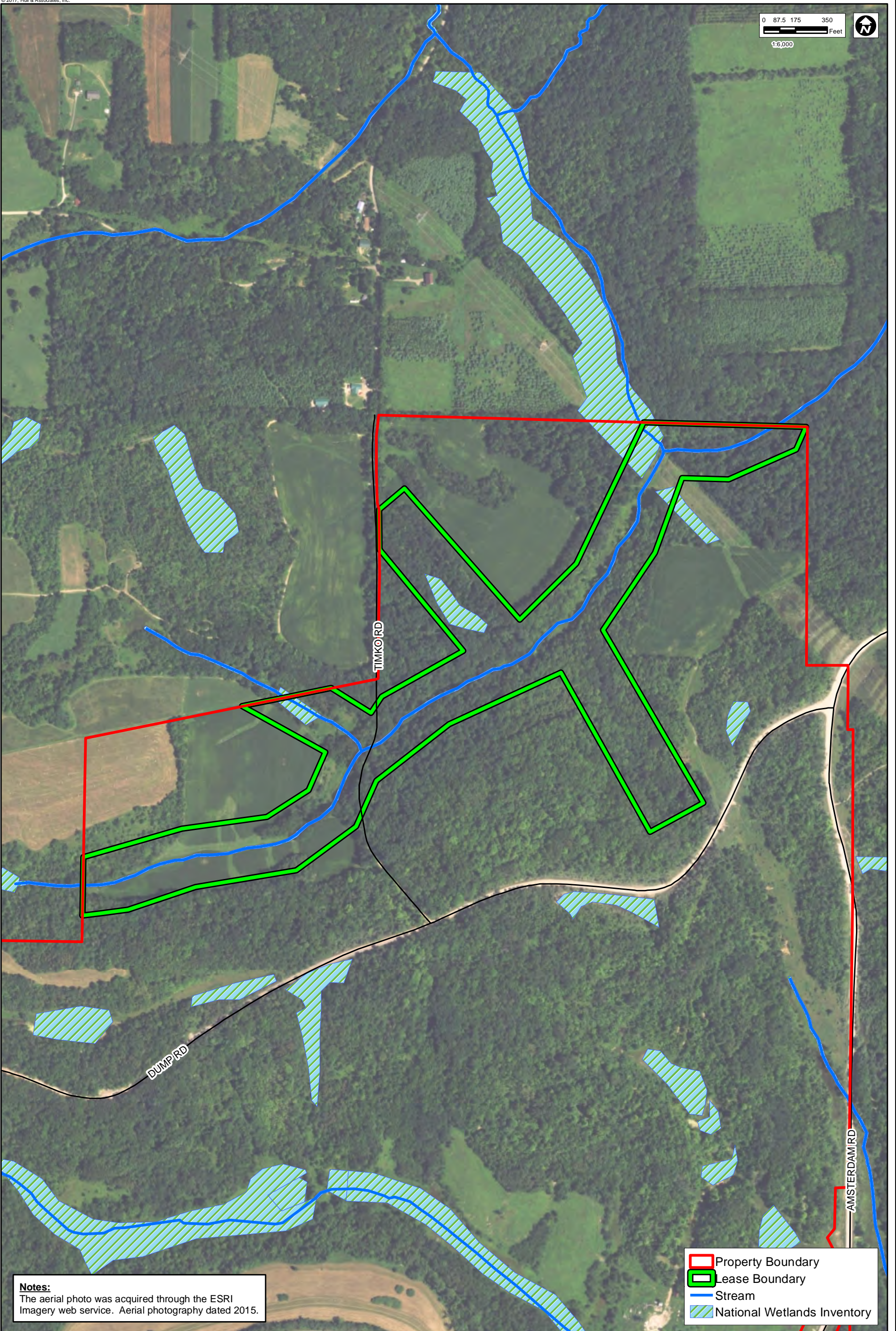
| | |
|--|-----------------------------|
| | Property Boundary |
| | Lease Boundary |
| | Stream |
| | National Wetlands Inventory |



DISCLAIMER
Hull & Associates, Inc. (Hull) has furnished this map to the company identified in the title block (Client) for its sole and exclusive use as a preliminary planning and screening tool and field verification is necessary to confirm these data. This map is reproduced from geospatial information compiled from third-party sources which may change over time. Areas depicted by the map are approximate and may not be accurate to mapping, surveying or engineering standards. Hull makes no representation or guarantee as to the content, accuracy, timeliness or completeness of any information or spatial location depicted on this map. This map is provided without warranty of any kind, including but not limited to, the implied warranties of merchantability or fitness for a particular purpose. In no event will Hull, its owners, officers, employees or agents, be liable for damages of any kind arising out of the use of this map by Client or any other party.

January 2017
Ecosystems Investment Partners
Upper Ohio Mitigation Bank
Area 5
USACE Pittsburgh District
Jewett-Germano Rd
Jewett, Harrison County, Ohio

Exhibit
3b-1



Notes:
The aerial photo was acquired through the ESRI Imagery web service. Aerial photography dated 2015.

| | |
|--|-----------------------------|
| | Property Boundary |
| | Lease Boundary |
| | Stream |
| | National Wetlands Inventory |



Ecosystem Investment Partners

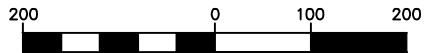
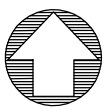
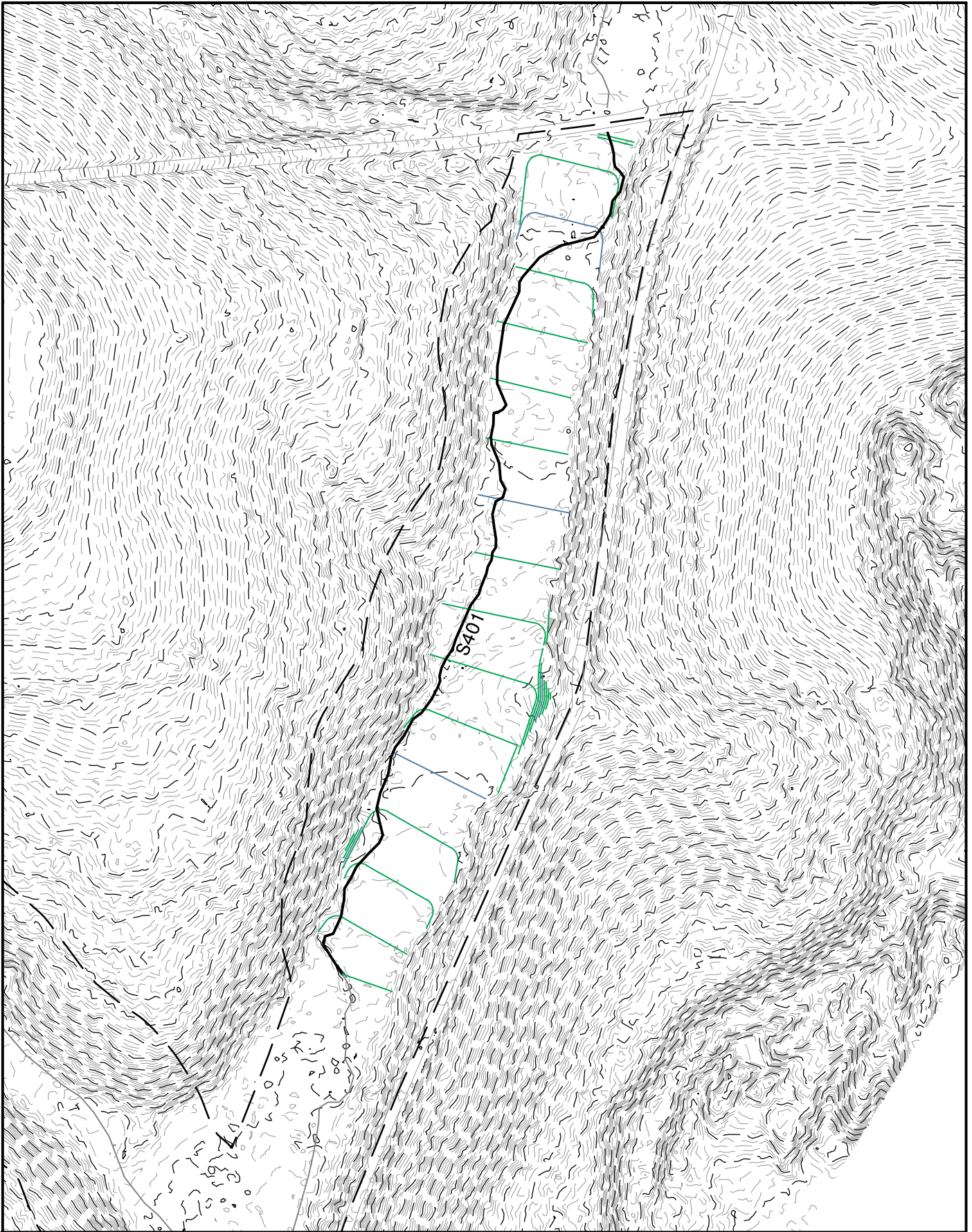
DISCLAIMER
Hull & Associates, Inc. (Hull) has furnished this map to the company identified in the title block (Client) for its sole and exclusive use as a preliminary planning and screening tool and field verification is necessary to confirm these data. This map is reproduced from geospatial information compiled from third-party sources which may change over time. Areas depicted by the map are approximate and may not be accurate to mapping, surveying or engineering standards. Hull makes no representation or guarantee as to the content, accuracy, timeliness or completeness of any information or spatial location depicted on this map. This map is provided without warranty of any kind, including but not limited to, the implied warranties of merchantability or fitness for a particular purpose. In no event will Hull, its owners, officers, employees or agents, be liable for damages of any kind arising out of the use of this map by Client or any other party.

January 2017
Ecosystems Investment Partners
Upper Ohio Mitigation Bank
Area 6
USACE Pittsburgh District
Jewett-Germano Rd
Jewett, Harrison County, Ohio

Exhibit
3b-2

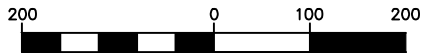
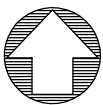
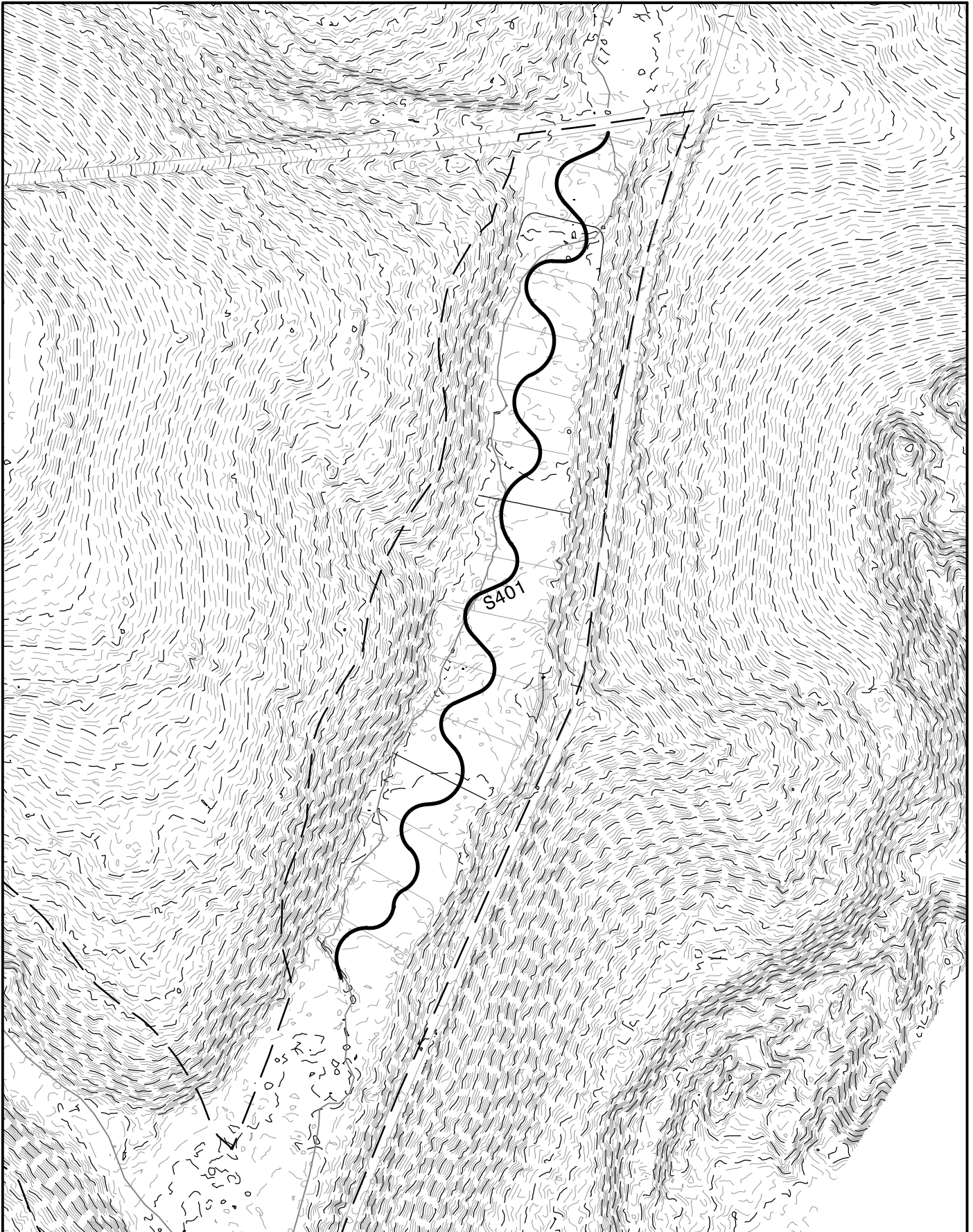


EXHIBIT 4



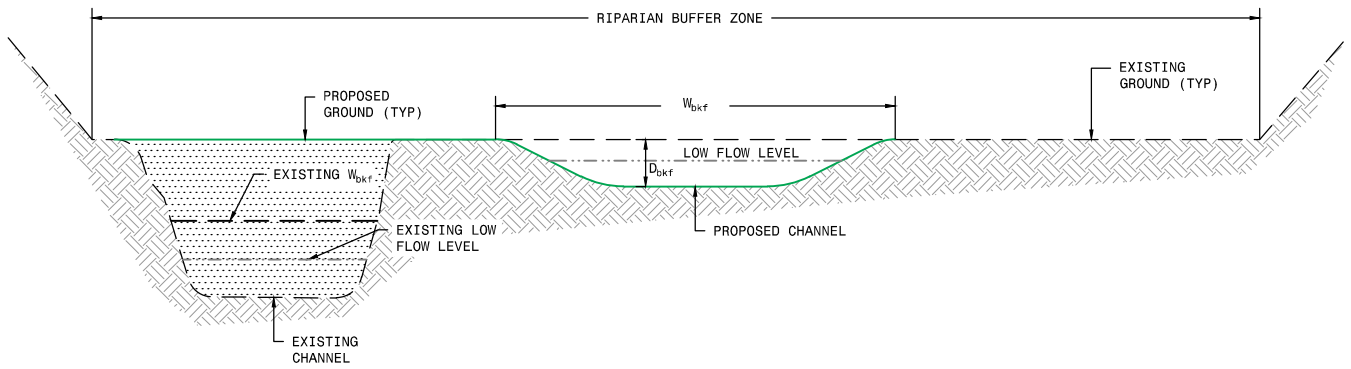
(IN FEET)
1 INCH = 200 FT.

STREAM S401

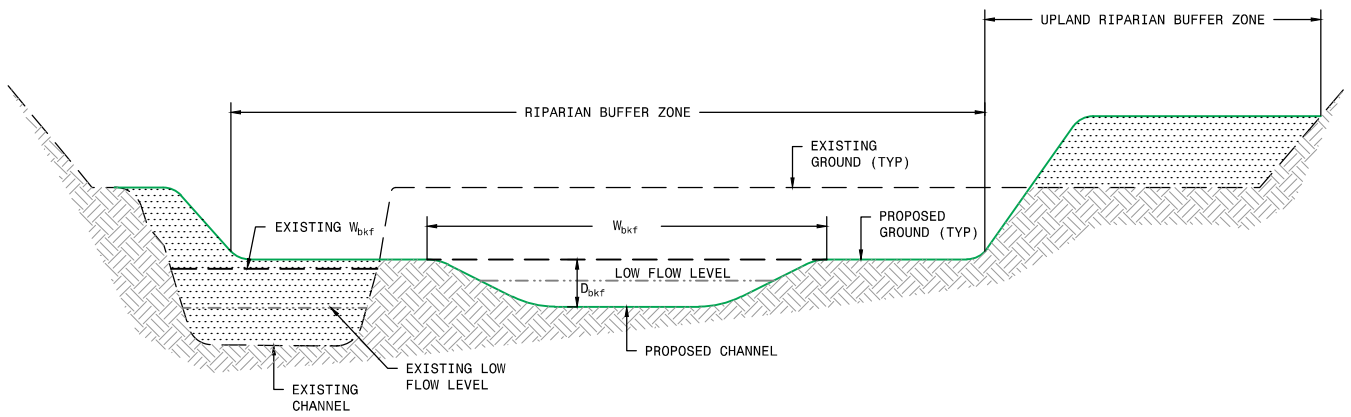


(IN FEET)
1 INCH = 200 FT.

STREAM S401
AS-BUILT



1 TYPICAL PRIORITY 1 STREAM RESTORATION CROSS SECTION
SCALE: N.T.S.



2 TYPICAL PRIORITY 2 STREAM RESTORATION CROSS SECTION
SCALE: N.T.S.

TYPICAL CROSS SECTIONS

ECOSYSTEMS INVESTMENT PARTNERS

6397 EMERALD PARKWAY
SUITE 200
DUBLIN, OHIO 43016
PHONE: (614) 793-8777
FAX: (614) 793-9070
www.hullinc.com



HULL

© 2016 Hull & Associates, Inc.

BROWNFIELDS
SHALE OIL & GAS
WASTE MANAGEMENT
ENVIRONMENTAL
ALTERNATIVE ENERGY



**Ecosystem
Investment
Partners**

STREAM S401 CONSTRUCTION SPECIFICATIONS

| Existing Stream Overview | |
|----------------------------|-----------------|
| Watershed | Jefferson Creek |
| Drainage Area (Acres) | 397 |
| Flow Regime | Perennial |
| POB Northing | 271866.2406 |
| POB Easting | 2398564.6416 |
| POE Northing | 270600.7000 |
| POE Easting | 2398165.0444 |
| POB Elev. (ft) | 1133.9 |
| POE Elev. (ft) | 1114.0 |
| Existing Stream Conditions | |
| Channel Length (ft) | 1472 |
| Valley Length (ft) | 1325 |
| Sinuosity | 1.11 |
| Valley Slope (ft/ft) | 0.0150 |

| Proposed Conditions | |
|--|-------------|
| Stream Type | C |
| Bed Type | Riffle/Pool |
| Channel Material | Mix 1 |
| Manning's n | 0.075 |
| Velocity (f/s) | 2.01 |
| Discharge - Q (cfs) | 28.53 |
| Bankfull Width - Wb _{kf} | 13.33 |
| Bankfull Depth - D _{b_{kf}} | 1.3300 |
| Width to Depth Ratio - W/D | 10.02 |
| Channel Length (ft) | 1723 |
| Channel Slope (ft/ft) | 0.010 |
| Sinuosity | 1.30 |
| Valley Slope (ft/ft) | 0.0120 |
| Entrenchment Ratio - ER | >2.2 |
| Bankfull Area - (sf) | 14.22 |
| Wavelength (ft) | 166 |

| Valley Grading Earthwork | |
|--------------------------|---------|
| Cut - (cy) | 1985 |
| Fill - (cy) | (1,966) |
| Net - (cy) | 19.00 |

| As-Built Conditions | |
|--|--|
| POB Northing | |
| POB Easting | |
| POE Northing | |
| POE Easting | |
| POB Elev. (ft) | |
| POE Elev. (ft) | |
| Channel Length (ft) | |
| Valley Length (ft) | |
| Sinuosity | |
| Valley Slope (ft/ft) | |
| Stream Type | |
| Bed Type | |
| Channel Material | |
| Manning's n | |
| Velocity (f/s) | |
| Discharge - Q (cfs) | |
| Bankfull Width - W _{b_{kf}} | |
| Bankfull Depth - D _{b_{kf}} | |
| Width to Depth Ratio - W/D | |
| Channel Length (ft) | |
| Channel Slope (ft/ft) | |
| Sinuosity | |
| Valley Slope (ft/ft) | |
| Entrenchment Ratio - ER | |
| Bankfull Area - (sf) | |
| Wavelength (ft) | |

| Construction Notes: | |
|---------------------|--|
| | |