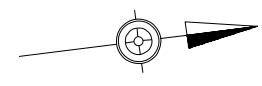


DISTRICT	COUNTY	ROUTE	SECTION	SHEET	
10-0	INDIANA	0119	465	61 OF 90	
HOMER CITY BOROUGH					
REVISION NUMBER	REVISIONS			DATE	BY

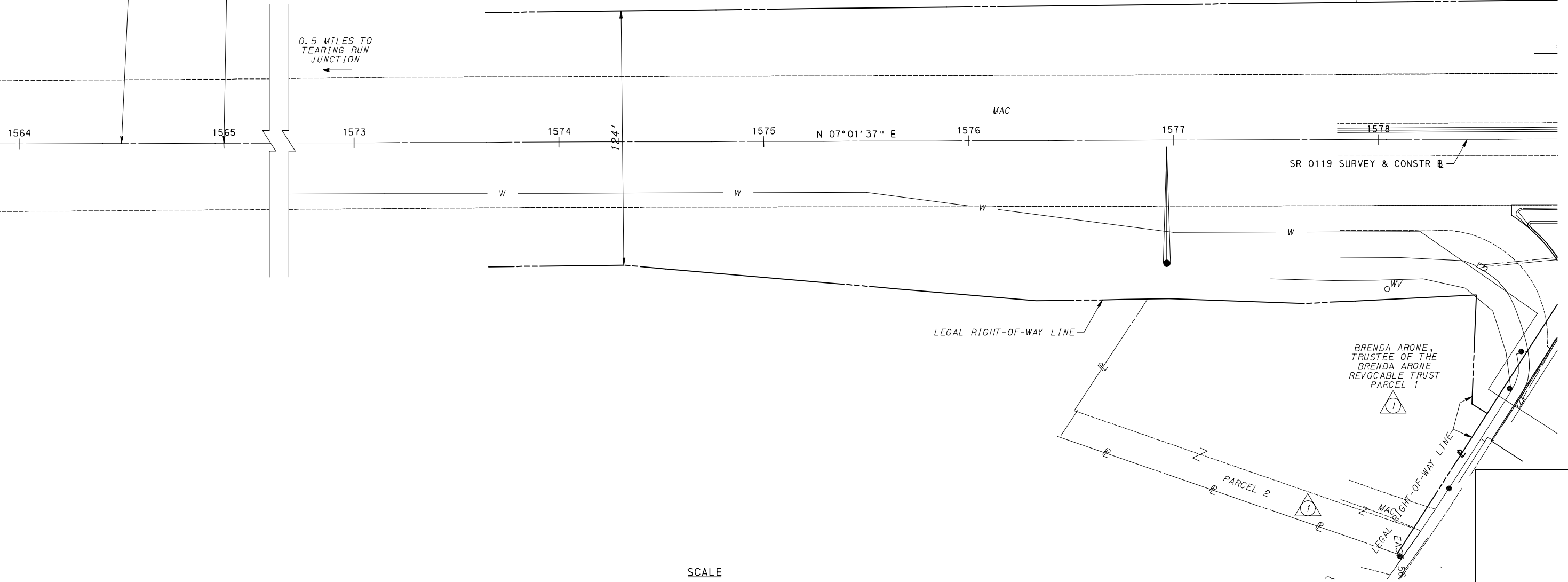


LIMIT OF WORK
 STA 1564+50.00
 SEGMENT 0162 OFFSET 0724
 SEGMENT 0163 OFFSET 0733
 SR 0119 SECTION 465
 CENTER TOWNSHIP
 INDIANA COUNTY

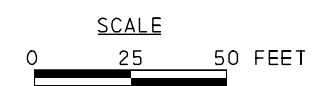
START WORK
 STA 1565+00.00
 SEGMENT 0162 OFFSET 0774
 SEGMENT 0163 OFFSET 0783
 SR 0119 SECTION 465

0.5 MILES TO
 TEARING RUN
 JUNCTION

RALPH KEVIN RUDDOCK &
 BARBARA JEAN RUDDOCK,
 HIS WIFE
 (2)
 LEGAL RIGHT-OF-WAY LINE



SEE SHEET 62



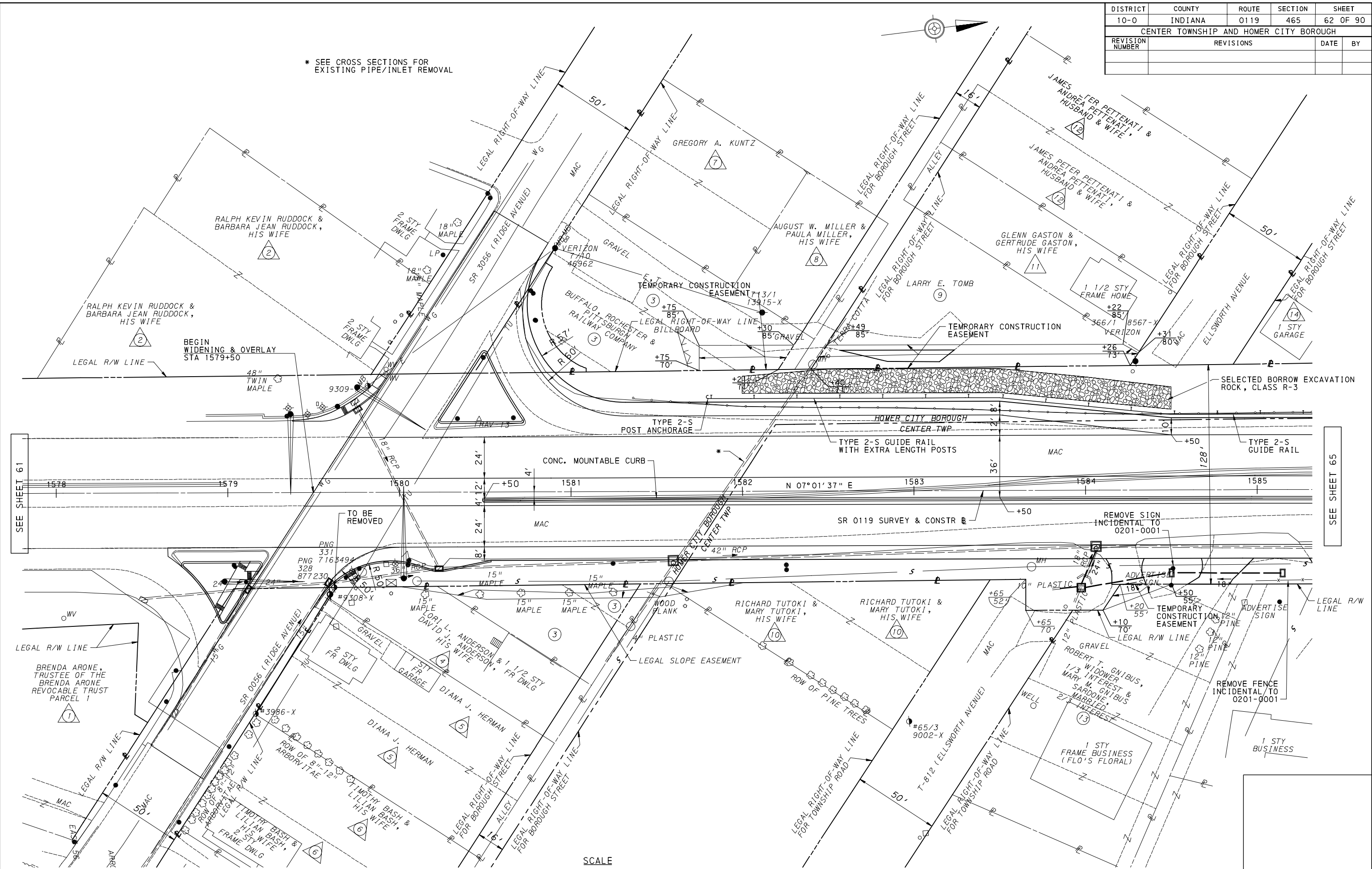
32-0119-460-0162 2100-0210 0200, FB# 1 OF 2
 32-0119-460-0162 2100-0210 0200, FB# 2 OF 2

DATE: 9/23/2016 TIME: 11:09:48 AM
 FILENAME: N:\57798-01-Homer\PE\Drawings\Cons\119465CNPL01.dgn

DSN BY: SMB CHK BY: CKR

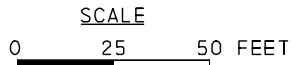
DISTRICT	COUNTY	ROUTE	SECTION	SHEET
10-0	INDIANA	0119	465	62 OF 90
CENTER TOWNSHIP AND HOMER CITY BOROUGH				
REVISION NUMBER	REVISIONS	DATE	BY	

* SEE CROSS SECTIONS FOR EXISTING PIPE/INLET REMOVAL



SEE SHEET 61

SEE SHEET 65



FOR SR 0056 INTERSECTION DETAIL, SEE SHEET 14
 FOR PROFILE, SEE SHEETS 63 & 64
 32-0119-460-0162 2100-0210 0200, FB# 1 OF 2
 32-0119-460-0162 2100-0210 0200, FB# 2 OF 2

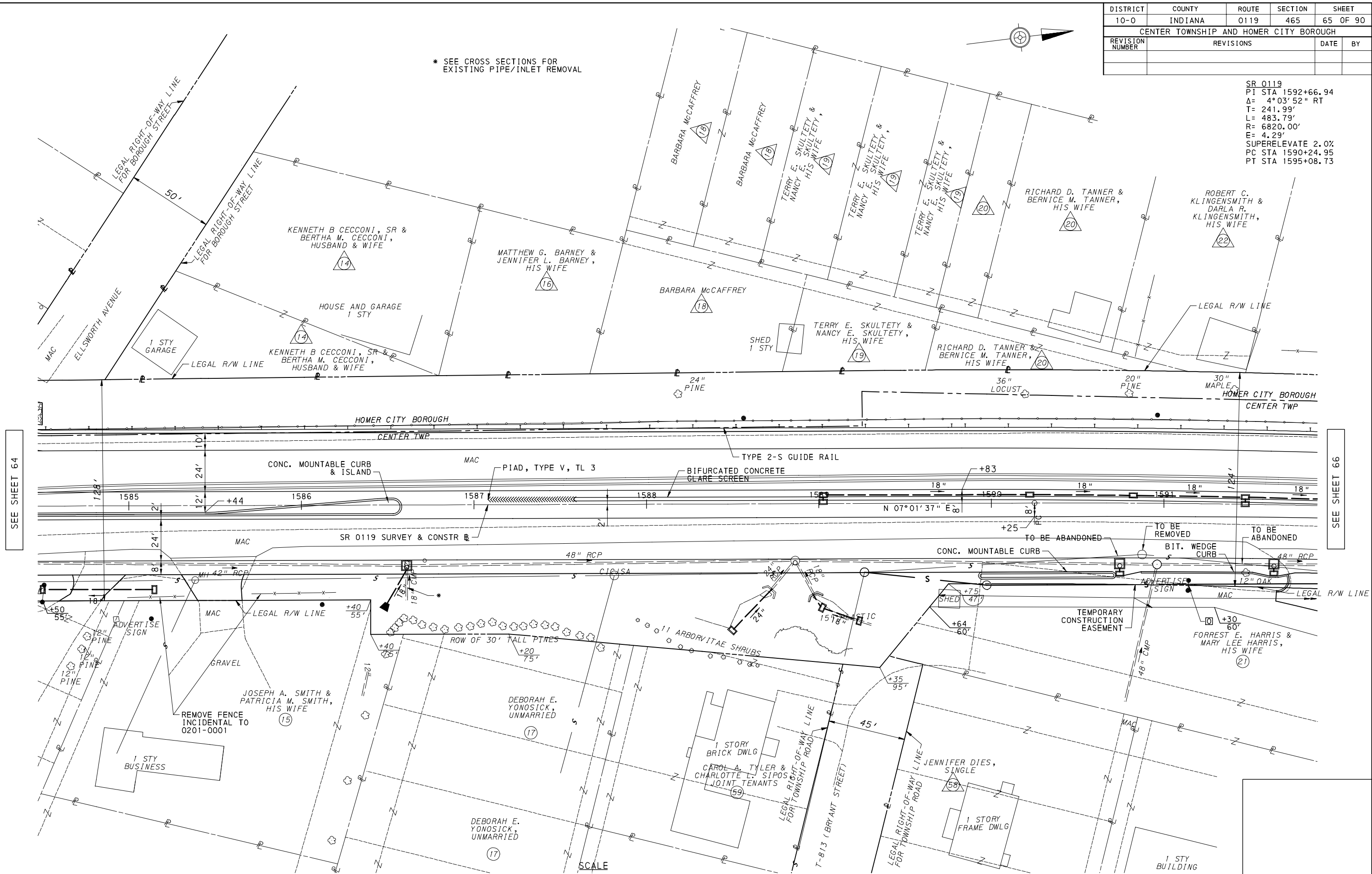
DATE: 9/23/2016 TIME: 11:09:50 AM
 FILENAME: N:\517798-01-Homer\PE\Drawings\Cons\TIP\am\p\ans\0119465\CNPL02.dgn

DSN BY: SMB CHK BY: CKR

DISTRICT	COUNTY	ROUTE	SECTION	SHEET
10-0	INDIANA	0119	465	65 OF 90
CENTER TOWNSHIP AND HOMER CITY BOROUGH				
REVISION NUMBER	REVISIONS	DATE	BY	

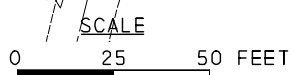
SR 0119
 PI STA 1592+66.94
 Δ= 4°03'52" RT
 T= 241.99'
 L= 483.79'
 R= 6820.00'
 E= 4.29'
 SUPERELEVATE 2.0%
 PC STA 1590+24.95
 PT STA 1595+08.73

* SEE CROSS SECTIONS FOR EXISTING PIPE/INLET REMOVAL



SEE SHEET 64

SEE SHEET 66



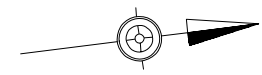
FOR SR 0056 ISLAND DETAIL, SEE SHEET 14
 FOR PROFILE, SEE SHEETS 66 & 67

32-0119-460-0162 2100-0210 0200, FB# 1 OF 2
 32-0119-460-0162 2100-0210 0200, FB# 2 OF 2

DATE: 9/23/2016 TIME: 11:09:59 AM
 FILENAME: N:\517798-01-Homer\PE\Drawings\Cons\1P\10m\19465CNPL03.dgn

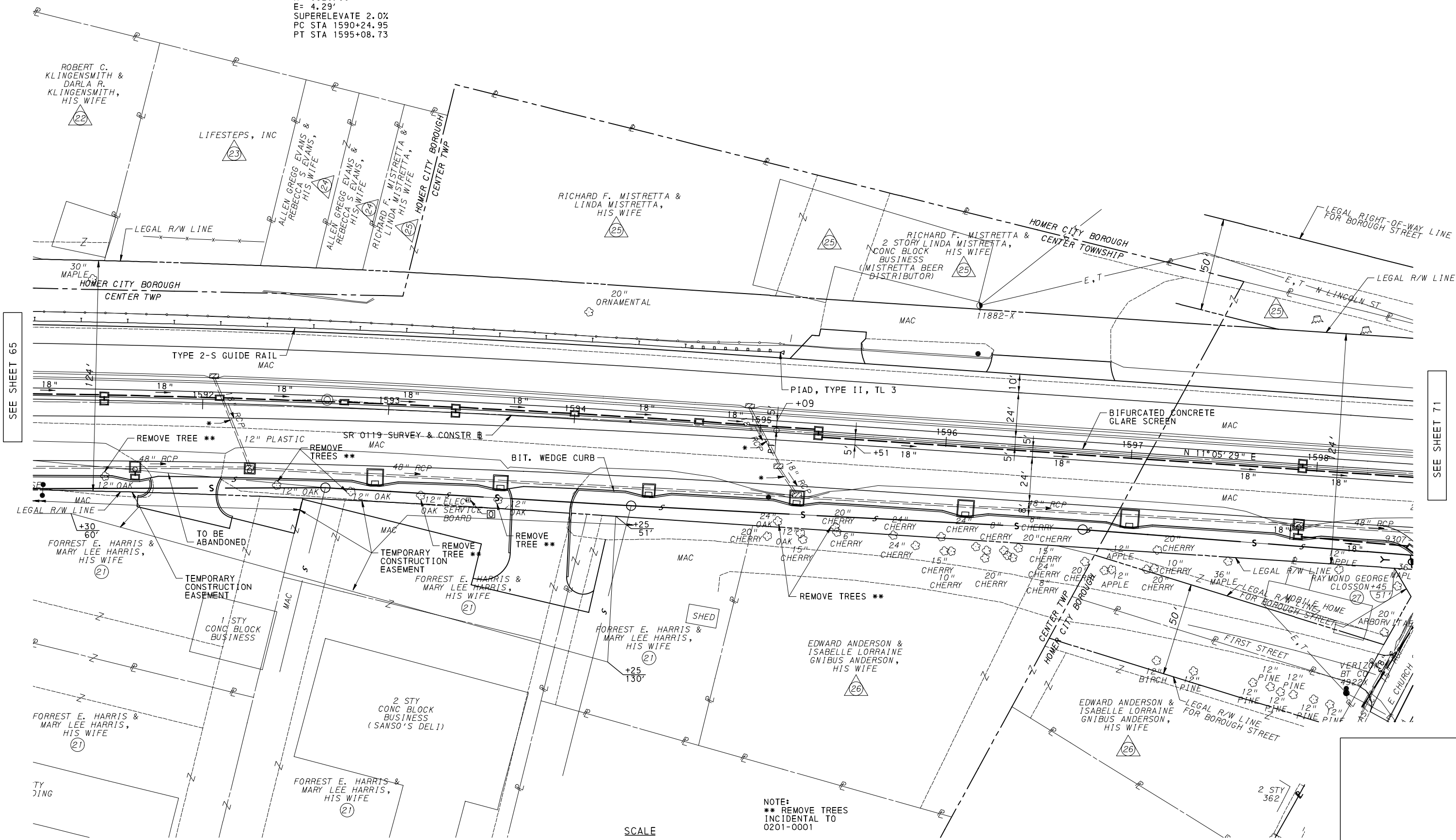
DSN BY: SMB CHK BY: CKR

DISTRICT	COUNTY	ROUTE	SECTION	SHEET
10-0	INDIANA	0119	465	68 OF 90
CENTER TOWNSHIP AND HOMER CITY BOROUGH				
REVISION NUMBER	REVISIONS	DATE	BY	



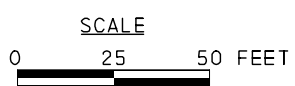
SR 0119
 PI STA 1592+66.94
 $\Delta = 4^{\circ}03'52''$ RT
 T= 241.99'
 L= 483.79'
 R= 6820.00'
 E= 4.29'
 SUPERELEVATE 2.0%
 PC STA 1590+24.95
 PT STA 1595+08.73

* SEE CROSS SECTIONS FOR EXISTING PIPE/INLET REMOVAL



SEE SHEET 65

SEE SHEET 71



NOTE:
 ** REMOVE TREES INCIDENTAL TO 0201-0001

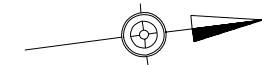
FOR PARCEL 21 PARKING LOT DETAIL, SEE SHEET 19	32-0119-460-0162 2100-0210 0200, FB# 1 OF 2
FOR PROFILE, SEE SHEETS 69 & 70	32-0119-460-0162 2100-0210 0200, FB# 2 OF 2

DATE: 9/23/2016 TIME: 11:10:07 AM
 FILENAME: N:\517798-01-Homer\PE\Drawings\Cons\19465\CNPL04.dgn

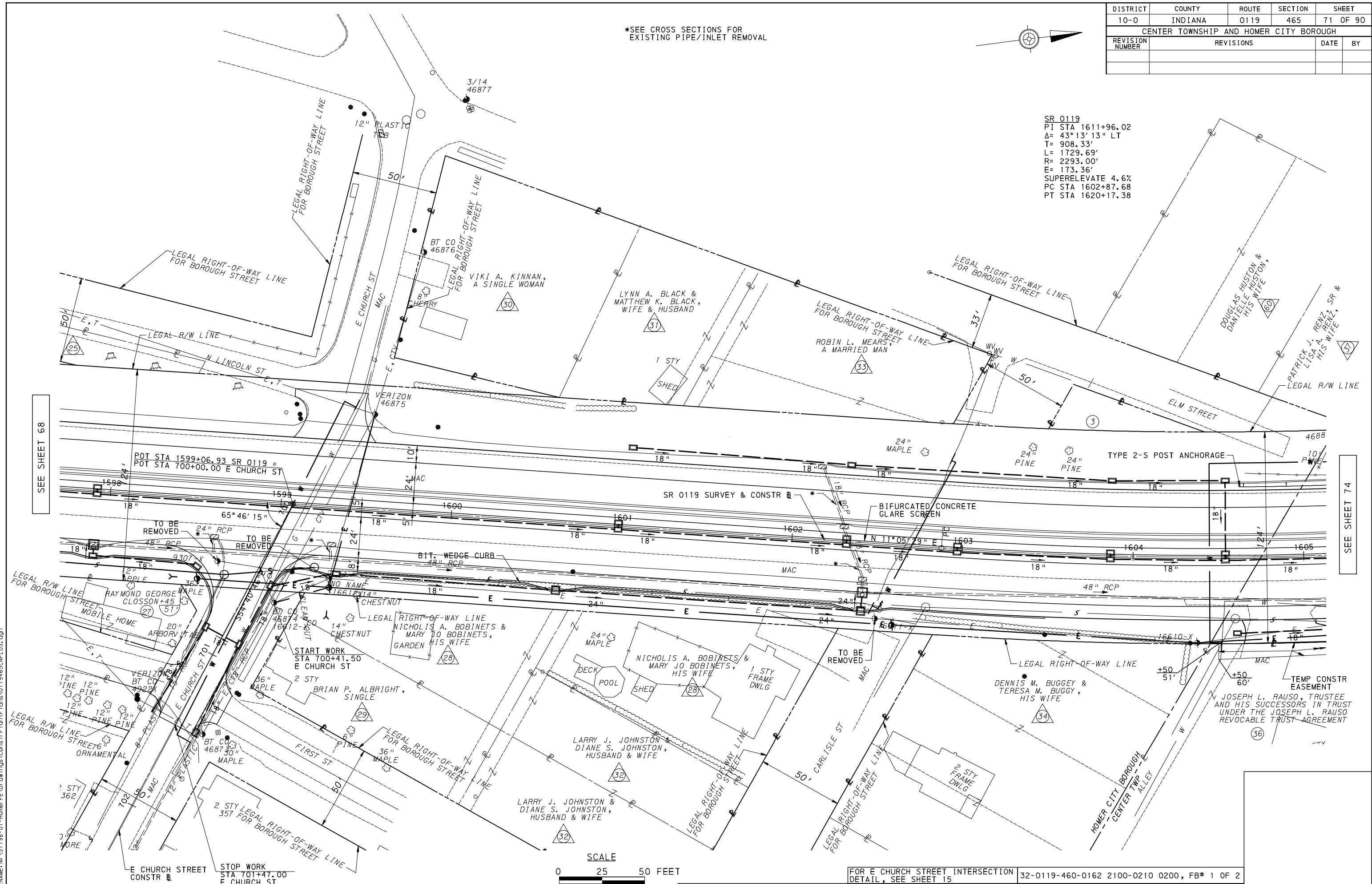
DSN BY: SMB CHK BY: CKR

DISTRICT	COUNTY	ROUTE	SECTION	SHEET
10-0	INDIANA	0119	465	71 OF 90
CENTER TOWNSHIP AND HOMER CITY BOROUGH				
REVISION NUMBER	REVISIONS	DATE	BY	

*SEE CROSS SECTIONS FOR EXISTING PIPE/INLET REMOVAL

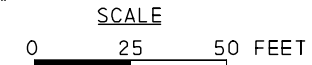


SR 0119
 PI STA 1611+96.02
 $\Delta = 43^\circ 13' 13''$ LT
 T= 908.33'
 L= 1729.69'
 R= 2293.00'
 E= 173.36'
 SUPERELEVATE 4.6%
 PC STA 1602+87.68
 PT STA 1620+17.38



SEE SHEET 68

SEE SHEET 74



DATE: 9/23/2016 TIME: 11:10:16 AM
 FILENAME: N:\517798-01-Homer\PE\Drawings\Cons\19465\CNPL05.dgn

DSN BY: SMB CHK BY: CKR

FOR E CHURCH STREET PROFILE SEE SHEET 88

FOR E CHURCH STREET INTERSECTION DETAIL, SEE SHEET 15
 FOR PROFILE, SEE SHEETS 72 & 73

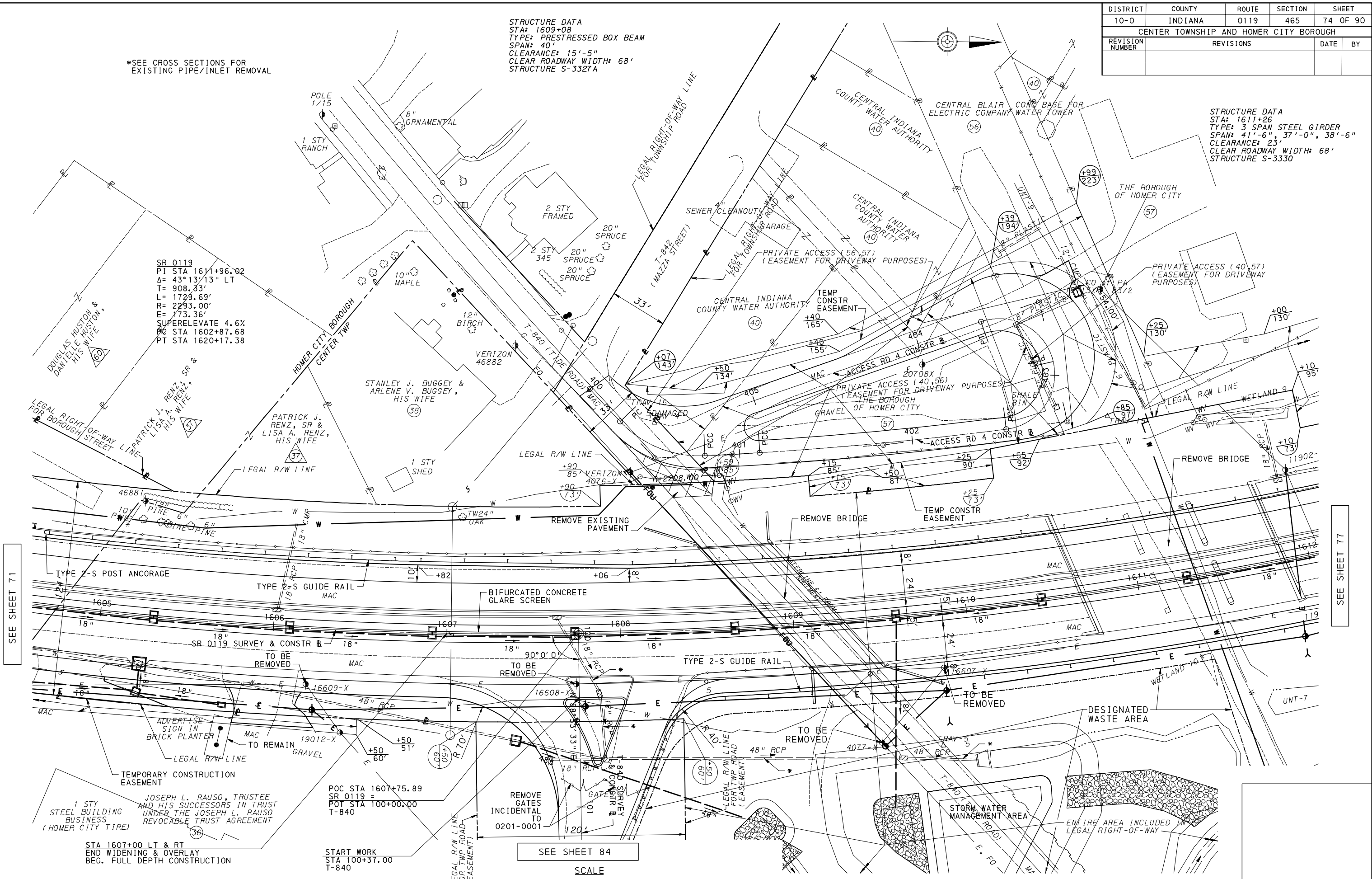
32-0119-460-0162 2100-0210 0200, FB# 1 OF 2
 32-0119-460-0162 2100-0210 0200, FB# 2 OF 2

DISTRICT	COUNTY	ROUTE	SECTION	SHEET
10-0	INDIANA	0119	465	74 OF 90
CENTER TOWNSHIP AND HOMER CITY BOROUGH				
REVISION NUMBER	REVISIONS	DATE	BY	

STRUCTURE DATA
 STA: 1609+08
 TYPE: PRESTRESSED BOX BEAM
 SPAN: 40'
 CLEARANCE: 15'-5"
 CLEAR ROADWAY WIDTH: 68'
 STRUCTURE S-3327A

STRUCTURE DATA
 STA: 1611+26
 TYPE: 3 SPAN STEEL GIRDER
 SPAN: 41'-6", 37'-0", 38'-6"
 CLEARANCE: 23'
 CLEAR ROADWAY WIDTH: 68'
 STRUCTURE S-3330

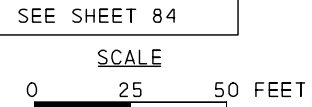
*SEE CROSS SECTIONS FOR EXISTING PIPE/INLET REMOVAL



SR 0119
 PI STA 1611+96.02
 $\Delta = 43^\circ 13' 13''$ LT
 T = 908.33'
 L = 1728.69'
 R = 2293.00'
 E = 173.36'
 SUPERELEVATE 4.6%
 PC STA 1602+87.68
 PT STA 1620+17.38

POC STA 1607+75.89
 SR 0119 =
 POT STA 100+00.00
 T-840

STA 1607+00 LT & RT
 END WIDENING & OVERLAY
 BEG. FULL DEPTH CONSTRUCTION



SEE SHEET 71

SEE SHEET 77

SEE SHEET 84

FOR ACCESS RD 4 DETAIL, SEE SHEET 17
 FOR T-840 INTERSECTION DETAIL, SEE SHEET 16
 FOR PROFILE, SEE SHEETS 75 & 76
 32-0119-460-0162 2100-0210 0200, FB# 1 OF 2
 32-0119-460-0162 2100-0210 0200, FB# 2 OF 2

DATE: 9/23/2016
 TIME: 11:10:25 AM
 FILENAME: N:\517798-01-Homer\PE\Drawings\Cons\T-840\Drawings\0119465\CNPL06.dgn

DSN BY: SMB CHK BY: CKR

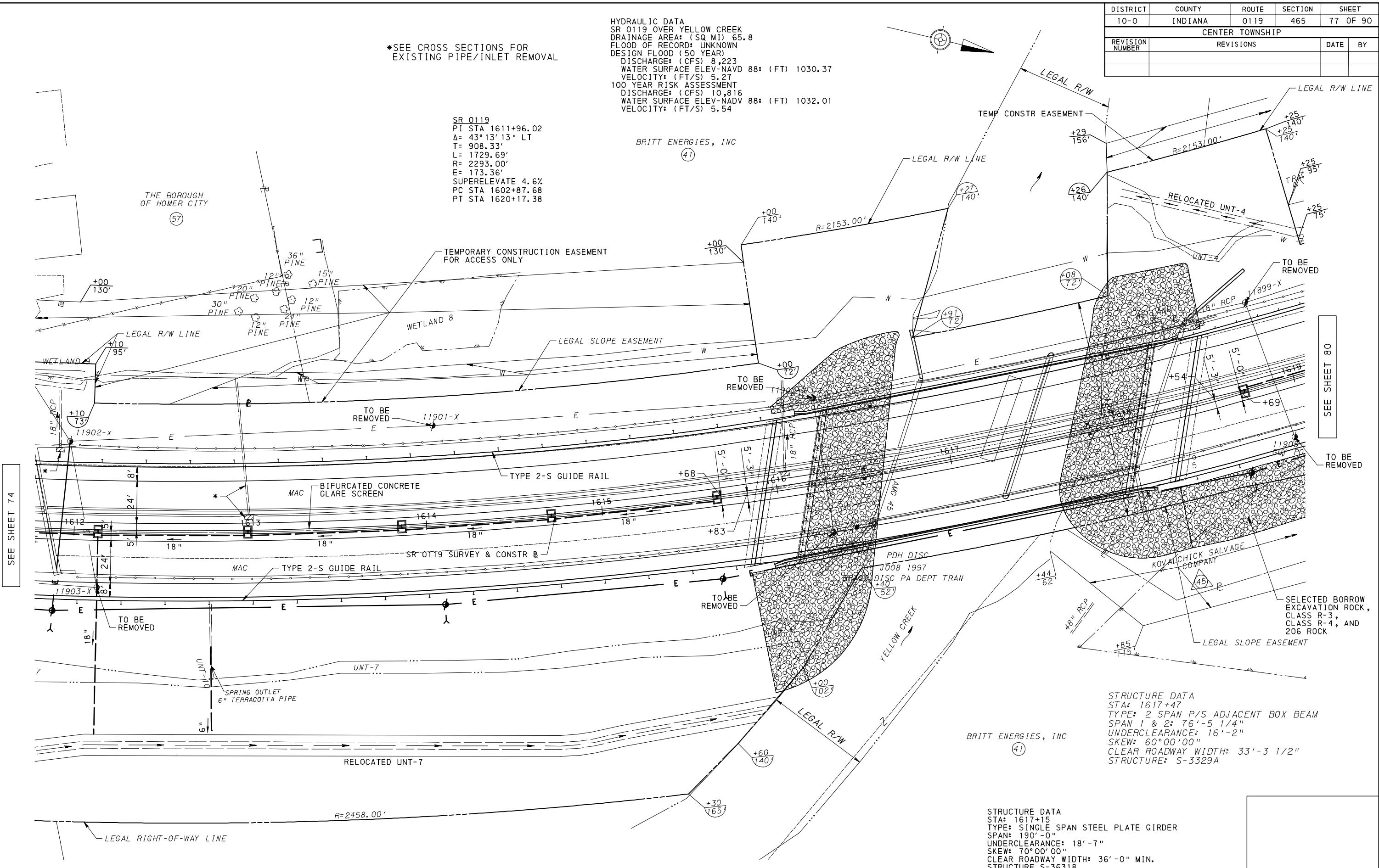
DISTRICT	COUNTY	ROUTE	SECTION	SHEET
10-0	INDIANA	0119	465	77 OF 90
CENTER TOWNSHIP				
REVISION NUMBER	REVISIONS	DATE	BY	

HYDRAULIC DATA
 SR 0119 OVER YELLOW CREEK
 DRAINAGE AREA: (SQ MI) 65.8
 FLOOD OF RECORD: UNKNOWN
 DESIGN FLOOD (50 YEAR)
 DISCHARGE: (CFS) 8,223
 WATER SURFACE ELEV-NAVD 88: (FT) 1030.37
 VELOCITY: (FT/S) 5.27
 100 YEAR RISK ASSESSMENT
 DISCHARGE: (CFS) 10,816
 WATER SURFACE ELEV-NAVD 88: (FT) 1032.01
 VELOCITY: (FT/S) 5.54

*SEE CROSS SECTIONS FOR
 EXISTING PIPE/INLET REMOVAL

SR 0119
 PI STA 1611+96.02
 $\Delta = 43^\circ 13' 13''$ LT
 T= 908.33'
 L= 1729.69'
 R= 2293.00'
 E= 173.36'
 SUPERELEVATE 4.6%
 PC STA 1602+87.68
 PT STA 1620+17.38

BRITT ENERGIES, INC
 (41)

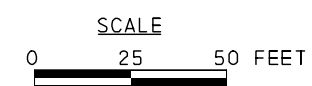


SEE SHEET 74

SEE SHEET 80

STRUCTURE DATA
 STA: 1617+47
 TYPE: 2 SPAN P/S ADJACENT BOX BEAM
 SPAN 1 & 2: 76'-5 1/4"
 UNDERCLEARANCE: 16'-2"
 SKEW: 60°00'00"
 CLEAR ROADWAY WIDTH: 33'-3 1/2"
 STRUCTURE: S-3329A

STRUCTURE DATA
 STA: 1617+15
 TYPE: SINGLE SPAN STEEL PLATE GIRDER
 SPAN: 190'-0"
 UNDERCLEARANCE: 18'-7"
 SKEW: 70°00'00"
 CLEAR ROADWAY WIDTH: 36'-0" MIN.
 STRUCTURE: S-36318



DATE: 9/23/2016 TIME: 11:10:33 AM
 FILENAME: N:\517798-01-Homer\PE\Drawings\Cons\119465\NPL01.dgn

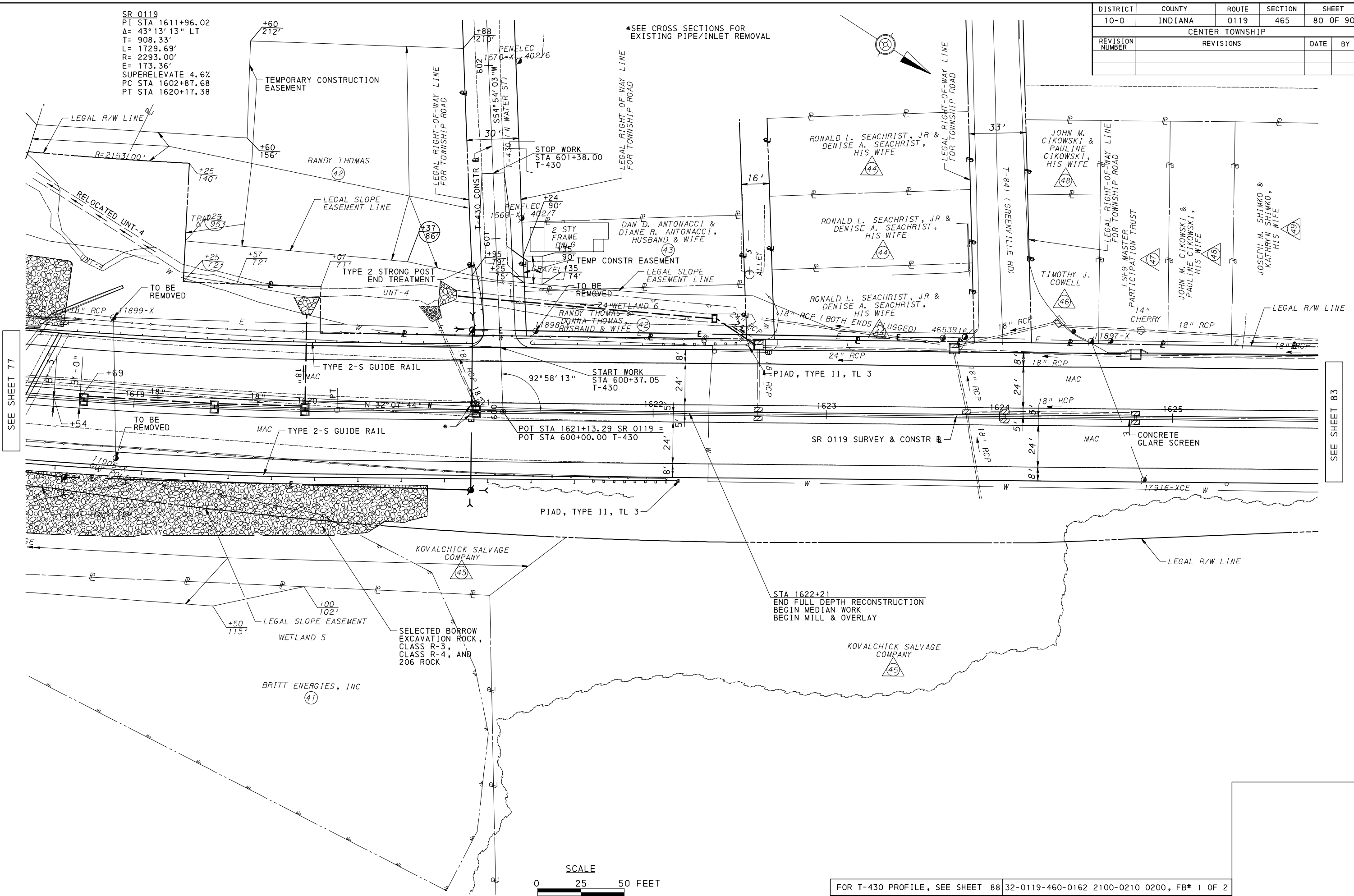
DSN BY: SMB CHK BY: CKR

FOR PROFILE, SEE SHEETS 78 & 79
 32-0119-460-0162 2100-0210 0200, FB# 1 OF 2
 32-0119-460-0162 2100-0210 0200, FB# 2 OF 2

DISTRICT	COUNTY	ROUTE	SECTION	SHEET
10-0	INDIANA	0119	465	80 OF 90
CENTER TOWNSHIP				
REVISION NUMBER	REVISIONS	DATE	BY	

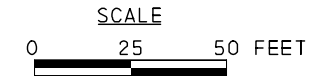
SR 0119
 PI STA 1611+96.02
 $\Delta = 43^\circ 13' 13''$ LT
 T = 908.33'
 L = 1729.69'
 R = 2293.00'
 E = 173.36'
 SUPERELEVATE 4.6%
 PC STA 1602+87.68
 PT STA 1620+17.38

*SEE CROSS SECTIONS FOR EXISTING PIPE/INLET REMOVAL



SEE SHEET 77

SEE SHEET 83

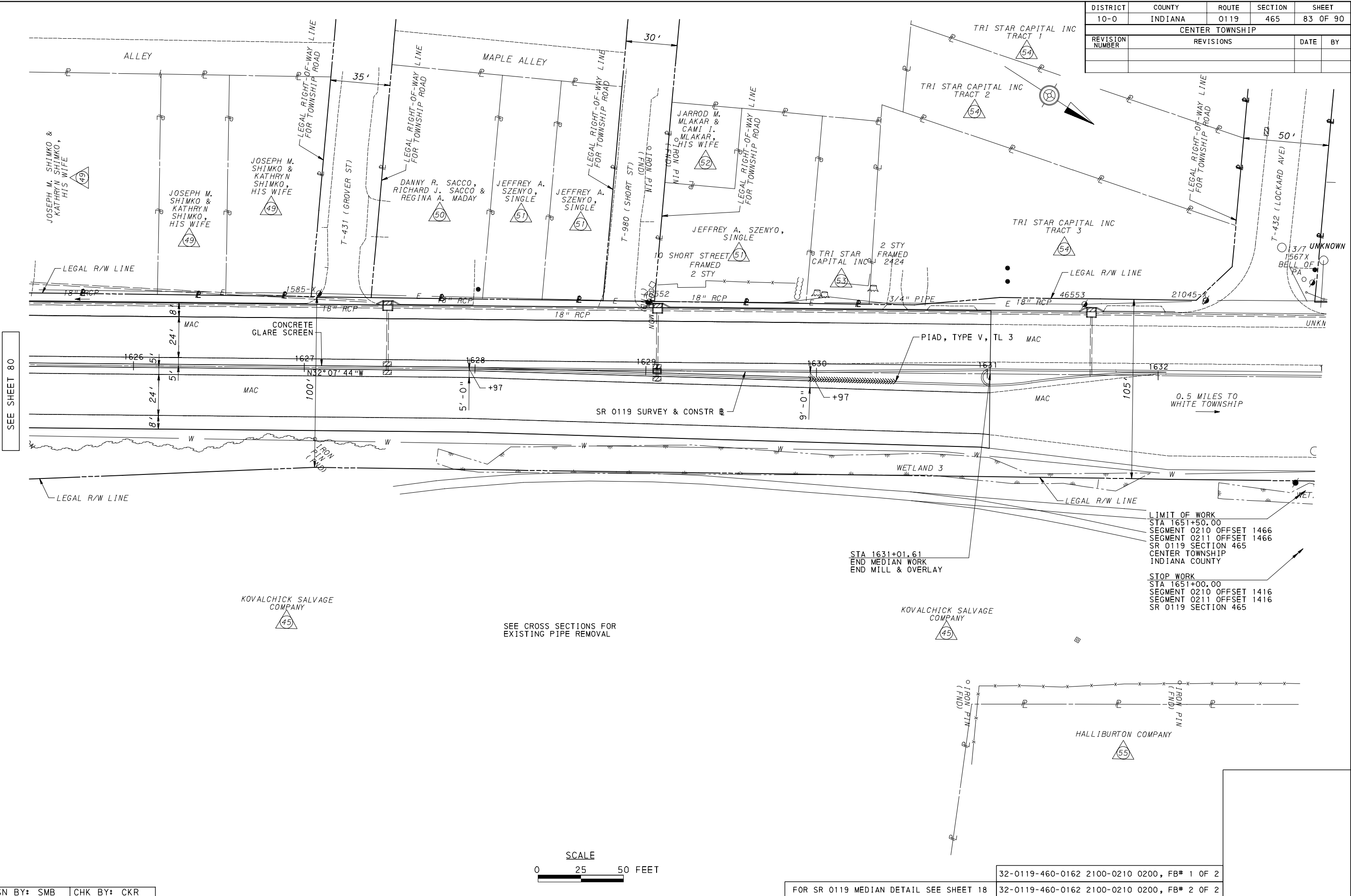


FOR T-430 PROFILE, SEE SHEET 88 32-0119-460-0162 2100-0210 0200, FB# 1 OF 2
 FOR PROFILE, SEE SHEETS 81 & 82 32-0119-460-0162 2100-0210 0200, FB# 2 OF 2

DATE: 9/23/2016 TIME: 11:10:41 AM FILENAME: N:\57798-01-Homer\PE\Drawings\Cons\119465\CNPL08.dgn

DSN BY: SMB CHK BY: CKR

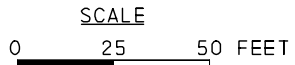
DISTRICT	COUNTY	ROUTE	SECTION	SHEET
10-0	INDIANA	0119	465	83 OF 90
CENTER TOWNSHIP				
REVISION NUMBER	REVISIONS	DATE	BY	



SEE SHEET 80

LIMIT OF WORK
 STA 1651+50.00
 SEGMENT 0210 OFFSET 1466
 SEGMENT 0211 OFFSET 1466
 SR 0119 SECTION 465
 CENTER TOWNSHIP
 INDIANA COUNTY

STOP WORK
 STA 1651+00.00
 SEGMENT 0210 OFFSET 1416
 SEGMENT 0211 OFFSET 1416
 SR 0119 SECTION 465



DATE: 9/23/2016 TIME: 11:10:50 AM
 FILENAME: N:\57798-01-Homer\PE\Drawings\Cons\rrp\dm\Plans\0119465\CNPL09.dgn

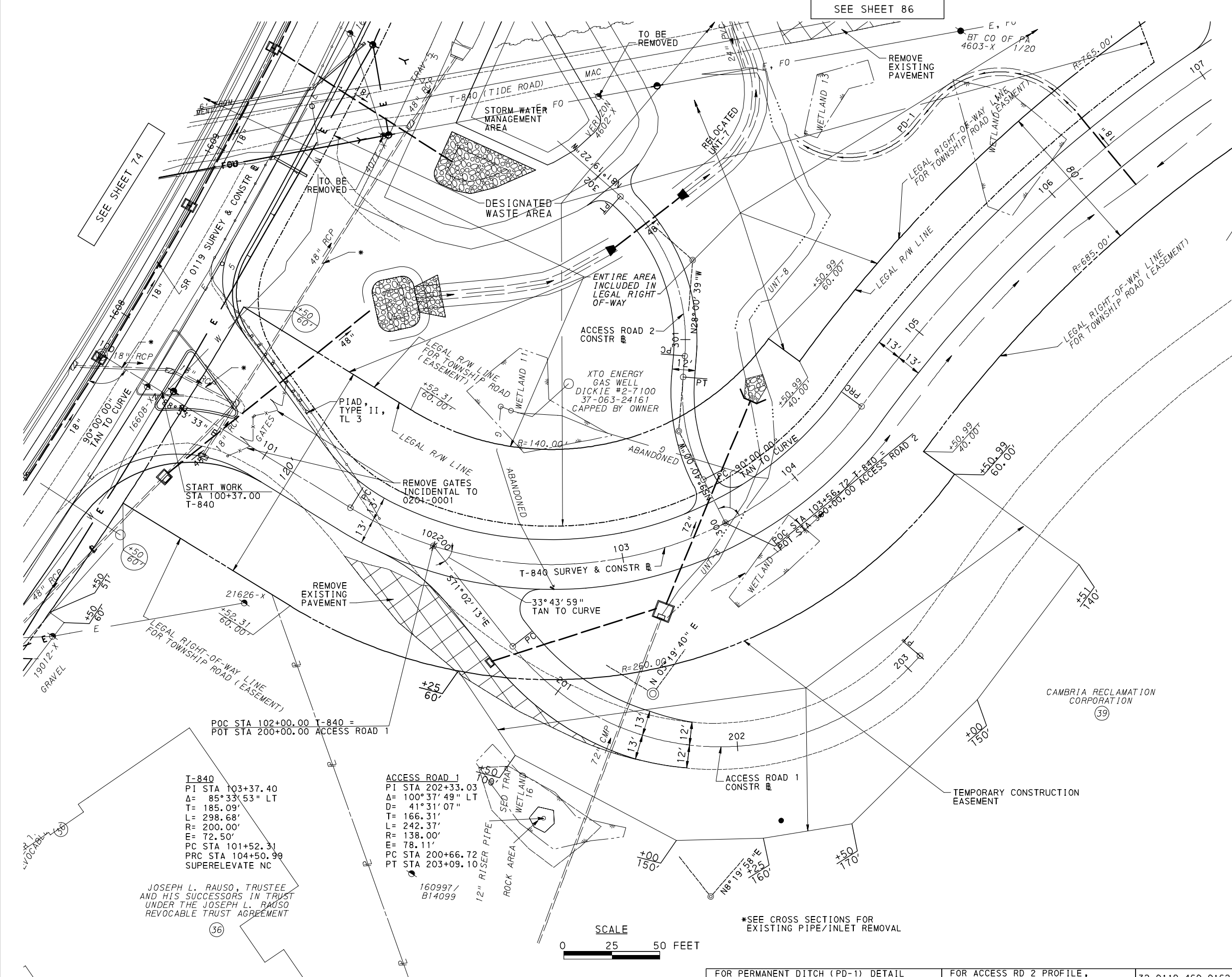
DSN BY: SMB CHK BY: CKR

FOR SR 0119 MEDIAN DETAIL SEE SHEET 18

32-0119-460-0162 2100-0210 0200, FB# 1 OF 2
 32-0119-460-0162 2100-0210 0200, FB# 2 OF 2

DISTRICT	COUNTY	ROUTE	SECTION	SHEET
10-0	INDIANA	0119	465	84 OF 90
CENTER TOWNSHIP				
REVISION NUMBER	REVISIONS			DATE BY

SEE SHEET 86



T-840
 PI STA 107+40.29
 $\Delta = 43^\circ 30' 27''$ RT
 T = 289.30'
 L = 550.53'
 R = 725.00'
 E = 55.59'
 PRC STA 104+50.99
 PT STA 110+01.51
 SUPERELEVATE NC

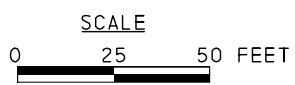
ACCESS ROAD 2
 PI STA 300+53.60
 $\Delta = 31^\circ 39' 21''$ RT
 T = 28.35'
 L = 55.25'
 R = 100.00'
 E = 3.94'
 PC STA 300+25.25
 PT STA 300+80.50
 SUPERELEVATE NC

ACCESS ROAD 2
 PI STA 301+41.62
 $\Delta = 53^\circ 18' 42''$ LT
 T = 50.20'
 L = 93.05'
 R = 100.00'
 E = 11.89'
 PC STA 300+91.42
 PT STA 301+84.46
 SUPERELEVATE NC

T-840
 PI STA 103+37.40
 $\Delta = 85^\circ 33' 53''$ LT
 T = 185.09'
 L = 298.68'
 R = 200.00'
 E = 72.50'
 PC STA 101+52.31
 PRC STA 104+50.99
 SUPERELEVATE NC

ACCESS ROAD 1
 PI STA 202+33.03
 $\Delta = 100^\circ 37' 49''$ LT
 D = $41^\circ 31' 07''$
 T = 166.31'
 L = 242.37'
 R = 138.00'
 E = 78.11'
 PC STA 200+66.72
 PT STA 203+09.10

JOSEPH L. RAUSO, TRUSTEE
 AND HIS SUCCESSORS IN TRUST
 UNDER THE JOSEPH L. RAUSO
 REVOCABLE TRUST AGREEMENT



*SEE CROSS SECTIONS FOR
 EXISTING PIPE/INLET REMOVAL

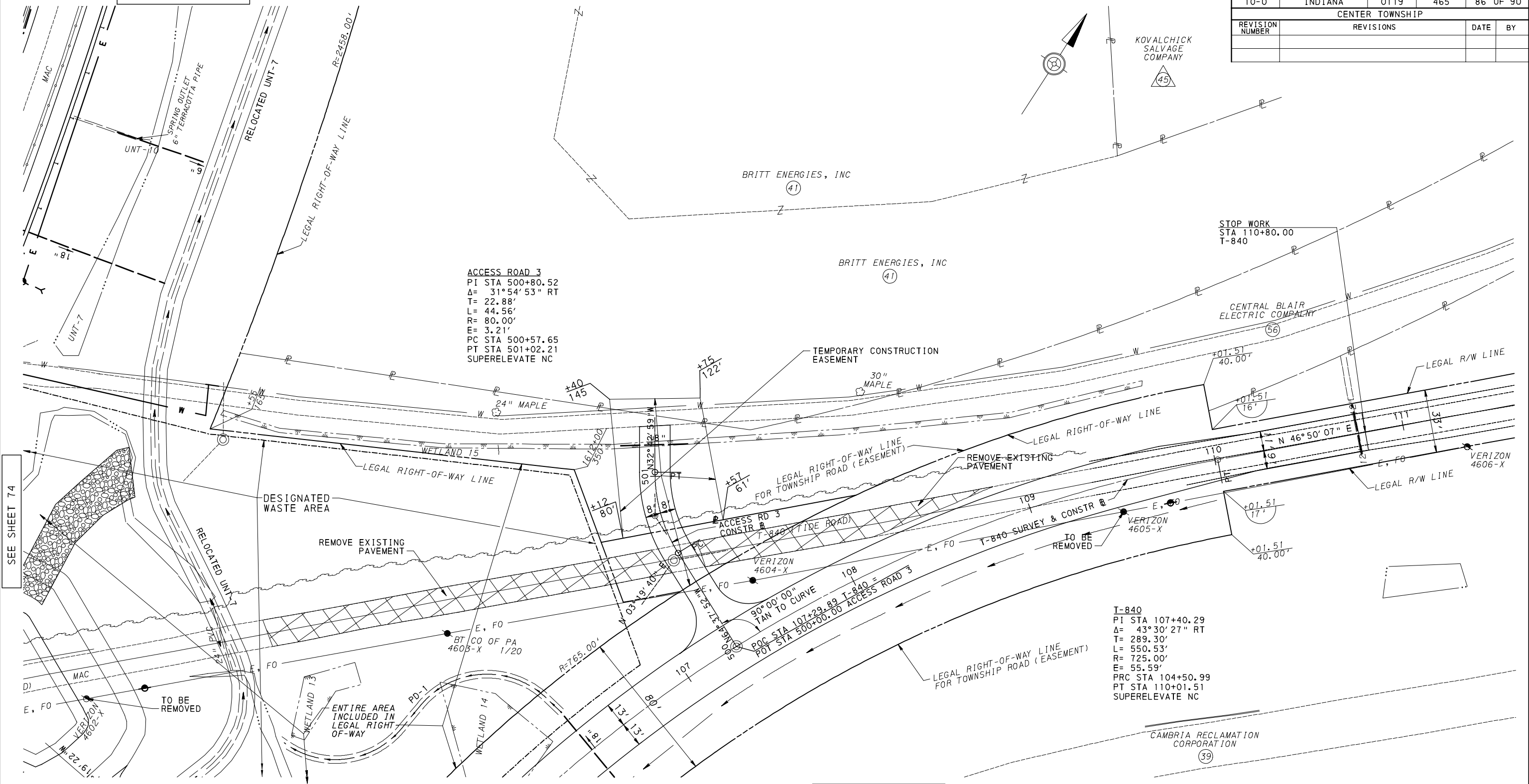
FOR PERMANENT DITCH (PD-1) DETAIL SEE SHEET 20	FOR ACCESS RD 2 PROFILE, SEE SHEET 89	32-0119-460-0162 2100-0210 0200, FB# 1 OF 2
FOR ACCESS RD 1 PROFILE, SEE SHEET 89	FOR T-840 PROFILE, SEE SHEET 85	32-0119-460-0162 2100-0210 0200, FB# 2 OF 2

DATE: 9/23/2016 TIME: 11:10:53 AM
 FILENAME: N:\517798-01-Homer\PE\Drawings\Cons\119465\CNPL10.dgn

DSN BY: SMB CHK BY: CKR

DISTRICT	COUNTY	ROUTE	SECTION	SHEET
10-0	INDIANA	0119	465	86 OF 90
CENTER TOWNSHIP				
REVISION NUMBER	REVISIONS	DATE	BY	

SEE SHEET 77

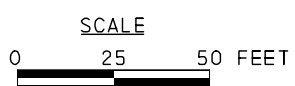


ACCESS ROAD 3
 PI STA 500+80.52
 $\Delta = 31^\circ 54' 53''$ RT
 T= 22.88'
 L= 44.56'
 R= 80.00'
 E= 3.21'
 PC STA 500+57.65
 PT STA 501+02.21
 SUPERELEVATE NC

T-840
 PI STA 107+40.29
 $\Delta = 43^\circ 30' 27''$ RT
 T= 289.30'
 L= 550.53'
 R= 725.00'
 E= 55.59'
 PRC STA 104+50.99
 PT STA 110+01.51
 SUPERELEVATE NC

SEE SHEET 74

SEE SHEET 84



FOR PERMANENT DITCH (PD-1) DETAIL, SEE SHEET 20	
FOR T-840 PROFILE, SEE SHEET 87	32-0119-460-0162 2100-0210 0200, FB# 1 OF 2
FOR ACCESS RD 3 PROFILE, SEE SHEET 89	32-0119-460-0162 2100-0210 0200, FB# 2 OF 2

DATE: 9/23/2016 TIME: 11:10:59 AM
 FILENAME: N:\57798-01-Homer\PE\Drawings\Cons\rr\Plan\Plans\0119465CNPL11.dgn
 DSN BY: SMB CHK BY: CKR