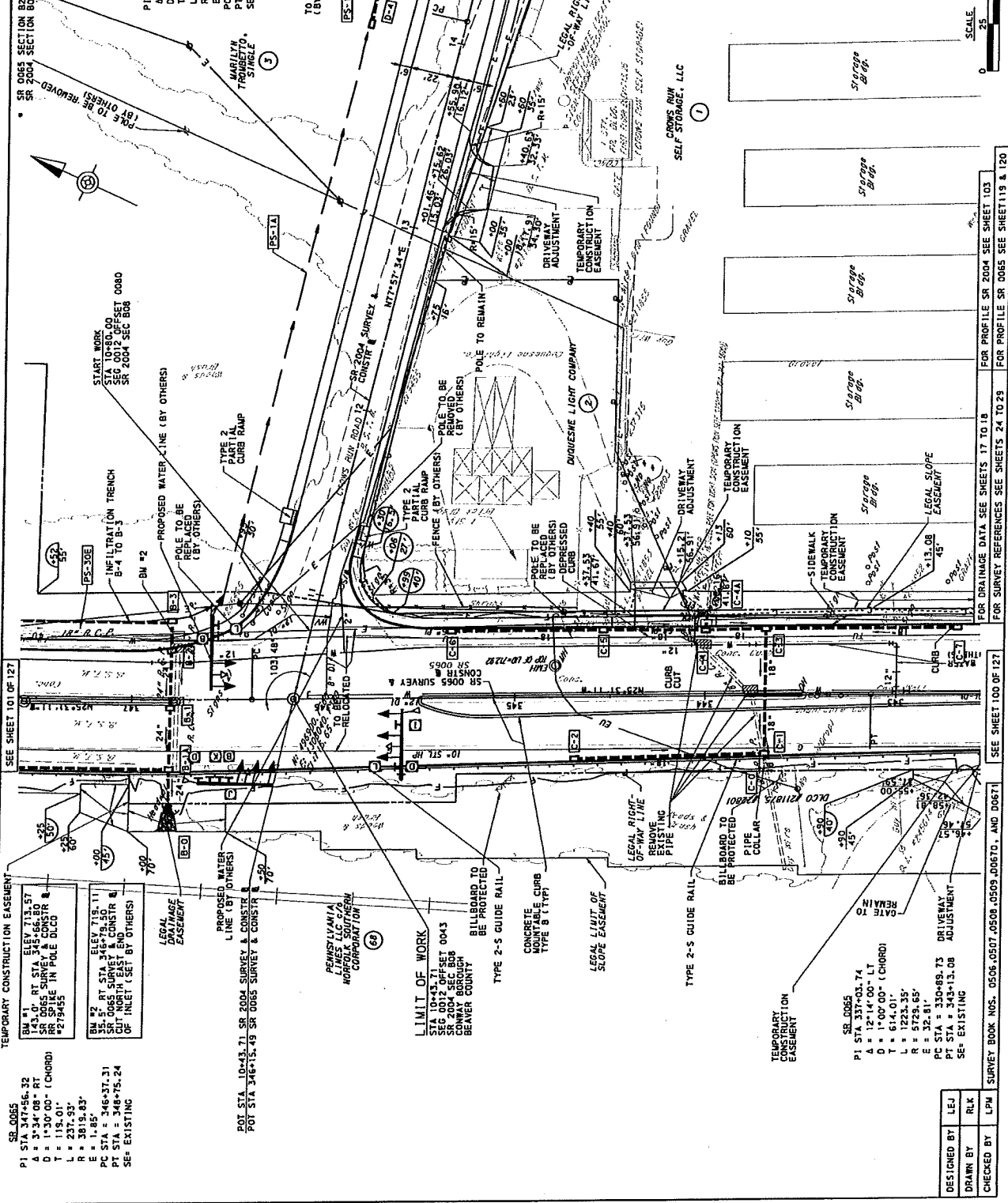


SEE SHEET 03 OF 127

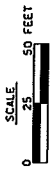
SHEET	SECTION	ROUTE	COUNTY	DISTRICT	SR 0065 SECTION 806
82 OF 127			BEAVER	11-0	2004
DATE	BY	REVISIONS	TOWNSHIP	AND CONWAY BOROUGH	



LEGEND

ROCK APRON / CHANNEL LINING
(SEE E&S PLAN FOR DETAILS)

PLAN



SR 0065 SECTION 806
SECTION 806
SR 2004

SR 2004
PI STA = 18+57.84
A = 52°18'21" LT
D = 11°27'33"
T = 245.52'
L = 456.45'
R = 500.00'
E = 57.03'
PC STA = 14+12.32
PT STA = 18+66.77
SE = 6%

MARILYN THOMBERTO, SURVEYOR

START WORK STA 10+80.00
SEC 0012 OFFSET 0080
SR 2004 SEC 808

SEE SHEET 101 OF 127

SEE SHEET 100 OF 127

SR 0065
PI STA = 347+86.32
A = 1°30'00" (CHORD)
D = 119.01'
T = 237.93'
L = 3819.83'
R = 1.85'
PC STA = 346+37.31
PT STA = 348+75.24
SE = EXISTING

TEMPORARY CONSTRUCTION EASEMENT
SR 0065
PI STA = 347+86.32
A = 1°30'00" (CHORD)
D = 119.01'
T = 237.93'
L = 3819.83'
R = 1.85'
PC STA = 346+37.31
PT STA = 348+75.24
SE = EXISTING

LIMIT OF WORK
STA 10+43.71
SR 2004 SURVEY & CONSTR
SR 2004 SEC 808
CONWAY BOROUGH
BEAVER COUNTY

SR 0065
PI STA = 347+86.32
A = 1°30'00" (CHORD)
D = 119.01'
T = 237.93'
L = 3819.83'
R = 1.85'
PC STA = 346+37.31
PT STA = 348+75.24
SE = EXISTING

DESIGNED BY	LEJ
DRAWN BY	RLK
CHECKED BY	LPM

FOR PROFILE SR 2004 SEE SHEET 103
FOR PROFILE SR 0065 SEE SHEET 119 & 120

FOR DRAINAGE DATA SEE SHEETS 17 TO 18
FOR SURVEY REFERENCES SEE SHEETS 24 TO 29

FOR DRAINAGE DATA SEE SHEETS 17 TO 18
FOR SURVEY REFERENCES SEE SHEETS 24 TO 29

FOR DRAINAGE DATA SEE SHEETS 17 TO 18
FOR SURVEY REFERENCES SEE SHEETS 24 TO 29

FOR DRAINAGE DATA SEE SHEETS 17 TO 18
FOR SURVEY REFERENCES SEE SHEETS 24 TO 29

DISTRICT	COUNTY	ROUTE	SECTION	SHEET
11-0	BEAVER	NEW SETTELCLEY TOWNSHIP AND CONWAY BOROUGH		85 OF 127
REVISION NUMBER	REVISIONS	DATE	BY	

SR 0665 SECTION B26
SR 2004 SECTION B08

NOTE: MINIMUM CHANNEL LENGTH PROVIDED FOR CHANNEL PS 7E TO BE RELOCATED (BY OTHERS)

BM #5 ELEV 727.59
14.56 RT STA 35+44.00
RR SPOKE IN CONSTR & POWER POLE BT CO #1904/3
(SET BY OTHERS)

BM #6 RT STA 35+45.00
34.0' SURV. E CONSTR & RR SPOKE IN CONSTR & POWER POLE BT CO #1904/3
(SET BY OTHERS)

SR 2004
PI STA 42+15.56
D = 81°02'47" LT
T = 435.94'
R = 521.41'
E = 160.93'
PC STA = 28+80.22
PT STA = 36+01.63
SE = 62

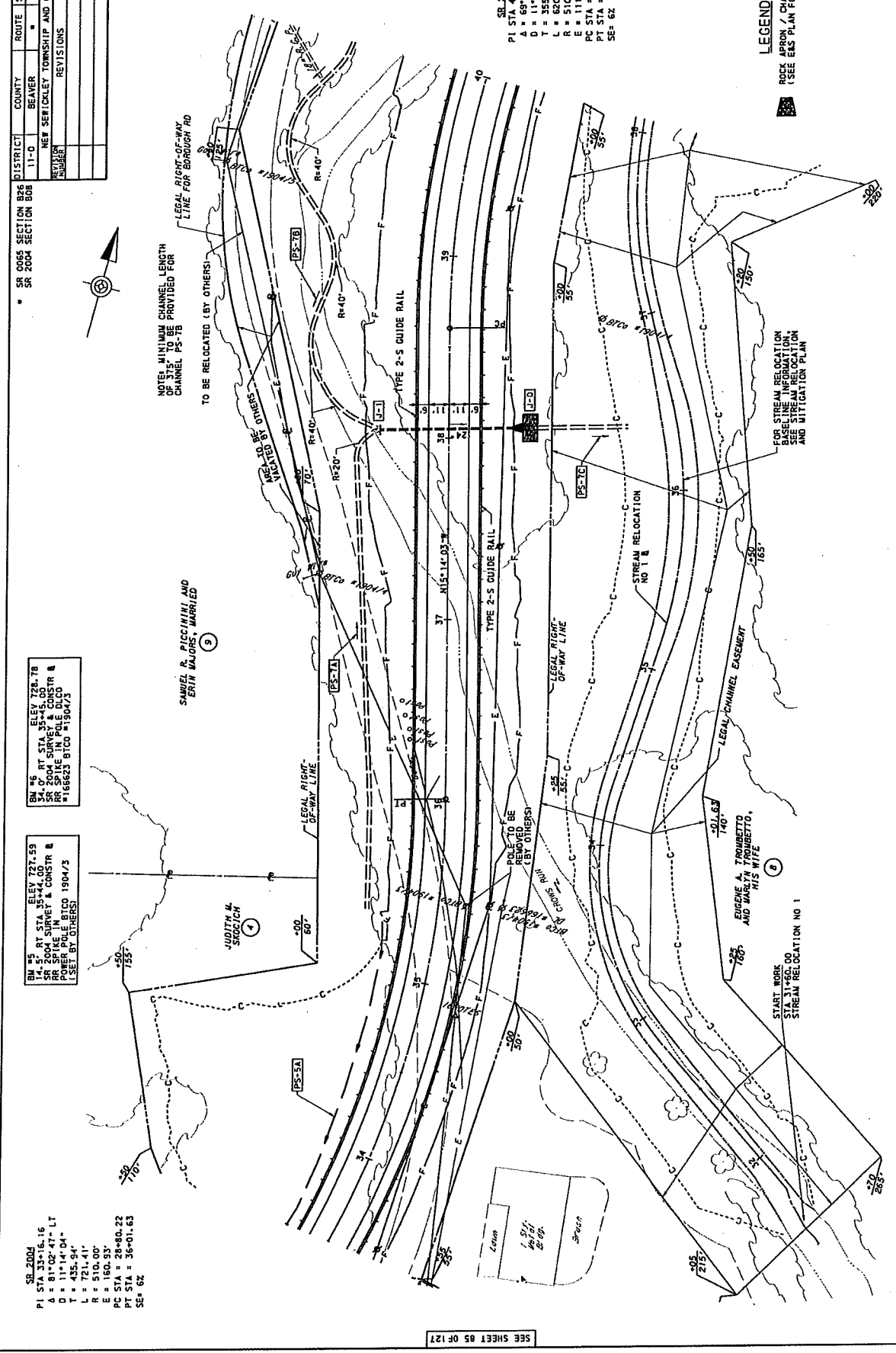
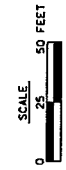
SEE SHEET 87 OF 127

SR 2004
PI STA 42+15.56
D = 81°02'47" RT
T = 435.94'
R = 521.41'
E = 160.93'
PC STA = 28+80.22
PT STA = 36+01.63
SE = 62

LEGEND

ROCK APRON / CHANNEL LINING (SEE E&S PLAN FOR DETAILS)

PLAN



FOR STREAM RELOCATION BASELINE INFORMATION, SEE STREAM RELOCATION AND MITIGATION PLAN

FOR SURVEY REFERENCES SEE SHEETS 24 TO 29 FOR PROFILE SR 2004 SEE SHEET 07 FOR DRAINAGE DATA SEE SHEETS 17 TO 18

DESIGNED BY	LEJ
DRAWN BY	RLK
CHECKED BY	LPH



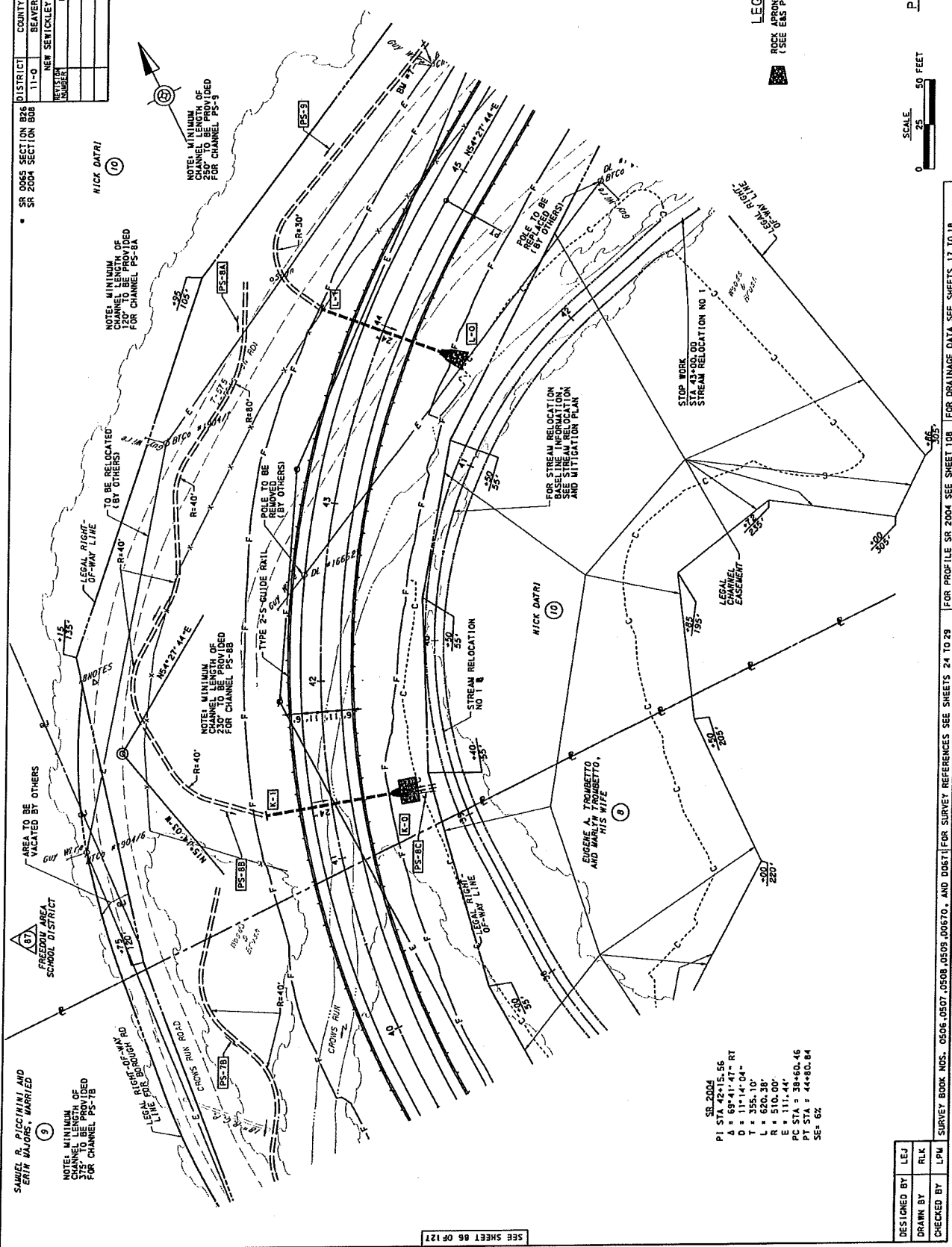
DATE: 03/11/2004 10:53 AM

SEE SHEET 85 OF 127

DISTRICT	COUNTY	ROUTE	SECTION	SHEET
11-0	BEAVER			87 OF 127
REVISIONS	TOWNSHIP	CONWAY	BOROUGH	
NUMBER				
DATE				
BY				

SR 2004 SECTION 808
SR 2004 SECTION 808

NOTE: MINIMUM CHANNEL LENGTH TO BE PROVIDED FOR CHANNEL PS-8A
NOTE: MINIMUM CHANNEL LENGTH TO BE PROVIDED FOR CHANNEL PS-8B
NOTE: MINIMUM CHANNEL LENGTH TO BE PROVIDED FOR CHANNEL PS-9



SEE SHEET 88 OF 127

SEE SHEET 86 OF 127



LEGEND
ROCK APRON CHANNEL LINING
(SEE EAST PLAN FOR DETAILS)

SCALE: 1" = 50 FEET
PLAN

SR 2004
PI STA 42+15.56
A = 69°41'47" RT
D = 11°14'04"
T = 355.10'
L = 610.38'
E = 111.44'
PC STA = 38+50.46
PT STA = 44+80.84
SE = 62'

DESIGNED BY	LEJ
DRAWN BY	RLK
CHECKED BY	LPM

SURVEY BOOK NOS. 0506, 0507, 0508, 0509, 06670, AND 06671 FOR SURVEY REFERENCES SEE SHEETS 24 TO 29 FOR PROFILE SR 2004 SEE SHEET 108 FOR DRAINAGE DATA SEE SHEETS 17 TO 18

DISTRICT	COUNTY	ROUTE	SECTION	SHEET
11-0	BEAVER			89 OF 127
REGISTER NUMBER	NEEDS REVISIONS	DATE	BY	

SR 0085 SECTION 808
SR 2004 SECTION 808

THE MCCLUSKEY FAMILY PROTECTOR TRUST.
BARBARA A. MCCLUSKEY
GRANTORS AND/OR TRUSTEE

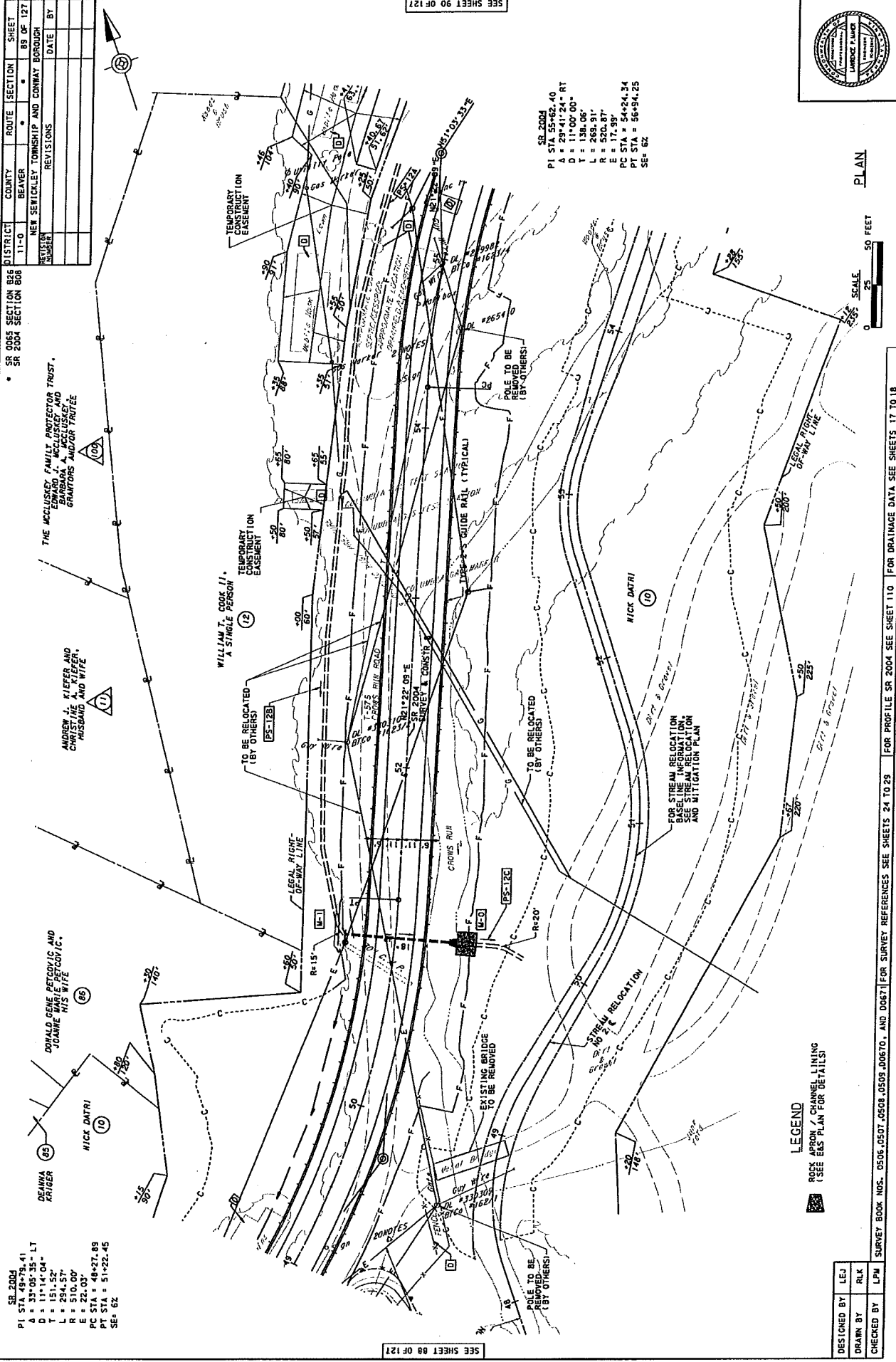
ANDREW J. KIEFER AND
CHRISTINE A. KIEFER
HUSBAND AND WIFE

DONALD GENE PETCOVIC AND
JUANNE HIS WIFE

SR 2004
PI STA = 55+62.40
D = 29°41'24" RT
T = 11°00'00"
L = 138.06'
R = 268.91'
E = 520.87'
PC STA = 54+24.34
PT STA = 56+94.25
SE = 62

SEE SHEET 88 OF 127

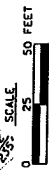
SEE SHEET 90 OF 127



SR 2004
PI STA 55+62.40
D = 29°41'24" RT
T = 11°00'00"
L = 138.06'
R = 268.91'
E = 520.87'
PC STA = 54+24.34
PT STA = 56+94.25
SE = 62



PLAN



LEGEND
RCS APRON / CHANNEL LINING
(SEE EAS PLAN FOR DETAILS)

DESIGNED BY	LEJ
DRAWN BY	RLK
CHECKED BY	LPM

SURVEY BOOK NOS. 0506, 0507, 0508, 0509, 00670, AND 00671 FOR SURVEY REFERENCES SEE SHEETS 24 TO 23 FOR PROFILE SR 2004 SEE SHEET 110 FOR DRAINAGE DATA SEE SHEETS 17 TO 18

DISTRICT	ROUTE	SECTION	SHEET
11-0	BEAVER	SR 2004 SECTION B08	30 OF 127
REVISION NUMBER	REVISIONS	DATE	BY

• SR 0665 SECTION B06
SR 2004 SECTION B08

BM #8
ELEV 749.12
PC STA = 50+24.50
PVI STA = 50+24.50
PPR SPIKE IN 24' LOCUST
(SET BY OTHERS)

NOTE: MINIMUM CHANNEL LENGTH OF 415' TO BE PROVIDED FOR CHANNEL PS-148

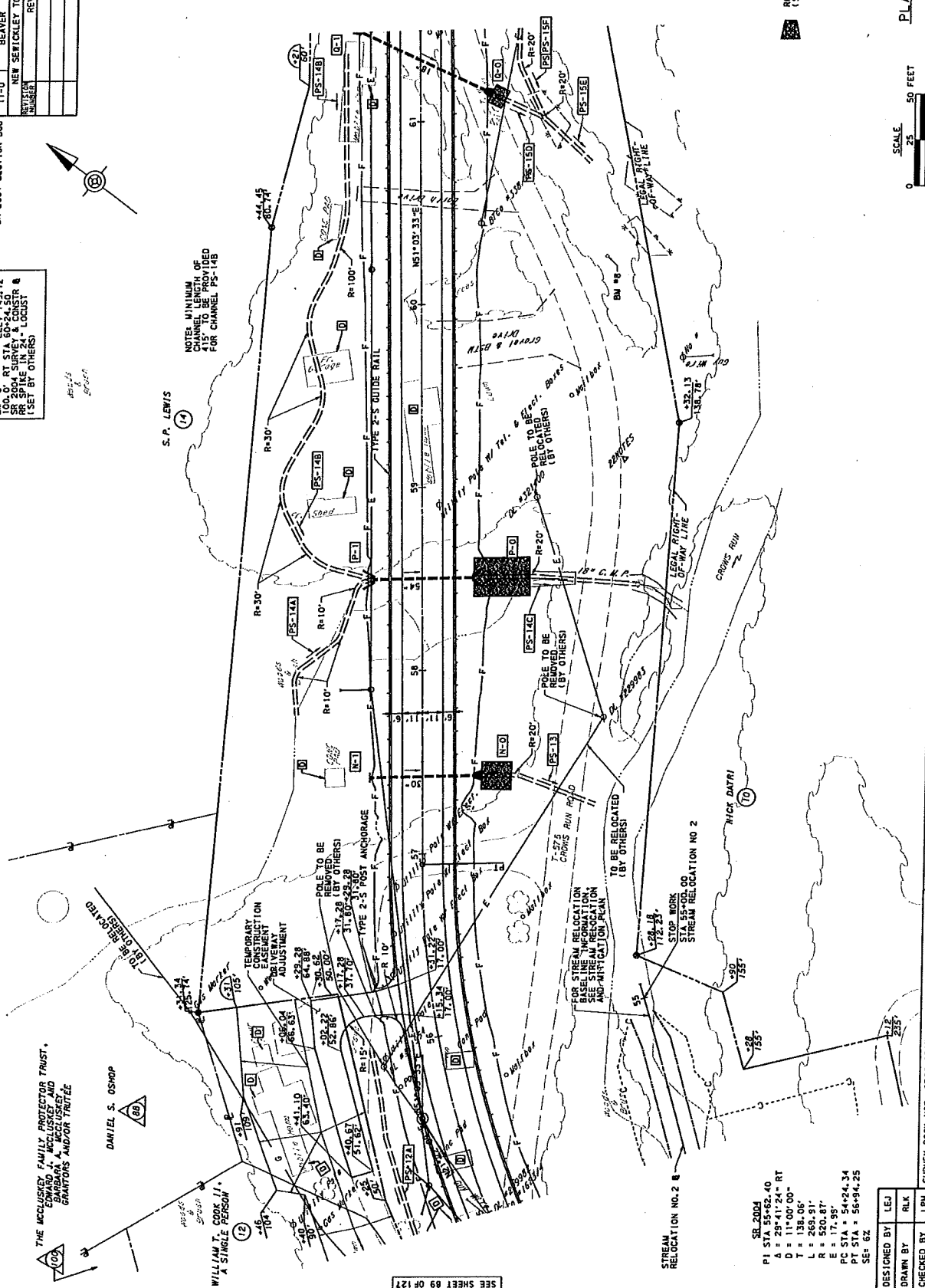
THE MCCLUSKEY FAMILY PROTECTORS TRUST,
EDWARD J. MCCLUSKEY AND
BARBARA A. MCCLUSKEY
GRANTORS AND/OR TRUSTEE

DANIEL S. OSKOP

WILLIAM T. COOK III,
A SINGLE PERSON

SEE SHEET 91 OF 127

SEE SHEET 89 OF 127



LEGEND
ROCK APPROX. CHANNEL LINING
(SEE E&S PLAN FOR DETAILS)



PLAN

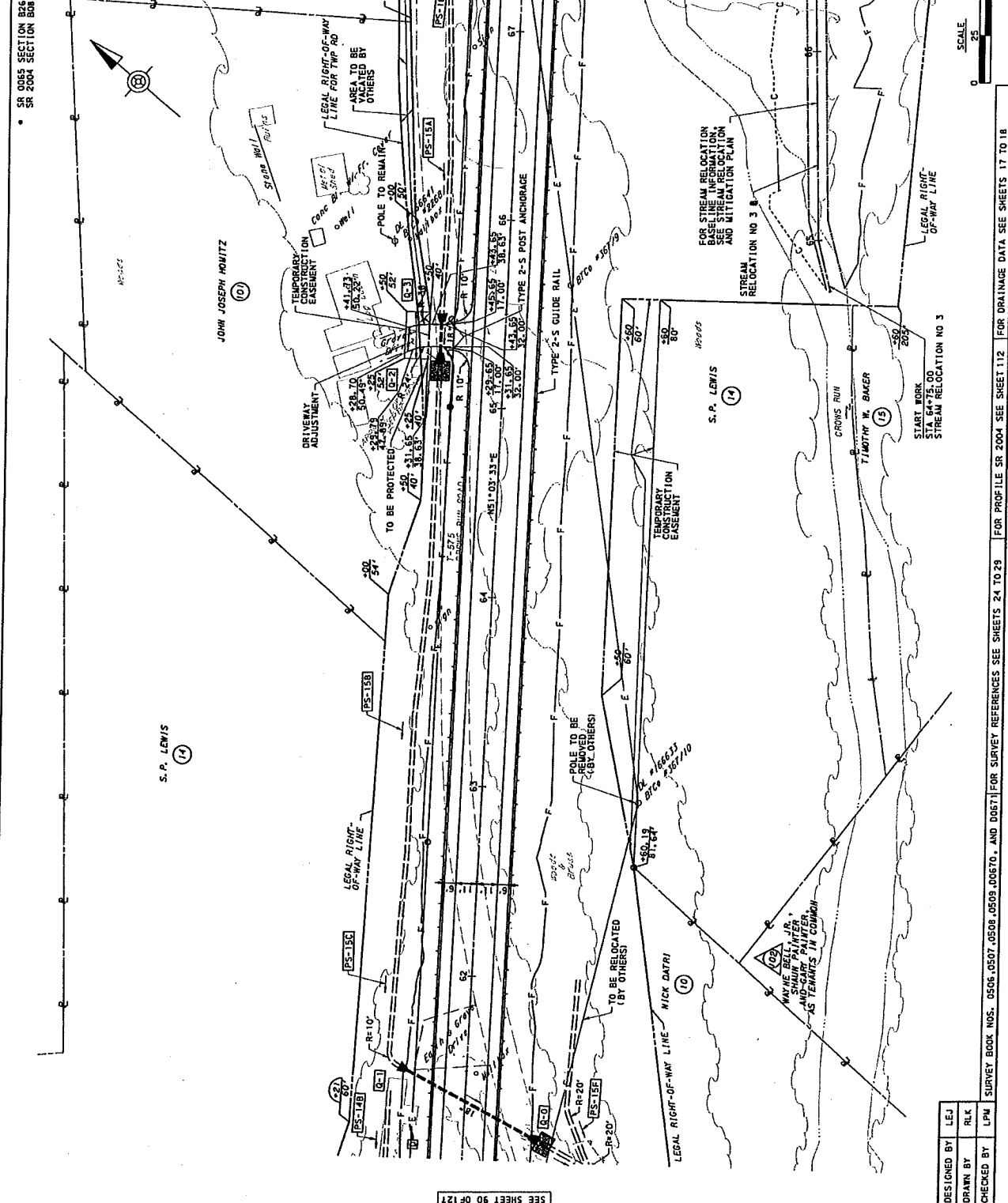


DESIGNED BY: LEJ
DRAWN BY: RLK
CHECKED BY: LPM
SURVEY BOOK NOS. 0506, 0507, 0508, 0509, 00670, AND 00671 FOR SURVEY REFERENCES SEE SHEETS 24 TO 23 FOR PROFILE SR 2004 SEE SHEET 111 FOR DRAINAGE DATA SEE SHEETS 17 TO 18

SR 2004
PI STA 55+62.40
Δ = 29°41'24" RT
T = 1°00'00"
L = 286.96'
R = 520.87'
E = 17.95'
PC STA = 54+24.34
PT STA = 56+94.25
SE = 6Z

SR 0065 SECTION B24	DISTRICT	COUNTY	ROUTE	SECTION	SHEET
SR 2004 SECTION B06	11-0	BEAVER			51 OF 127
	REVISION NUMBER	NEW SETBACKS, TOWNSHIP AND CONWAY BROADWAY			
		REVISIONS			DATE
					BY

SEE SHEET 92 OF 127



SEE SHEET 90 OF 127

DESIGNED BY	LEJ
DRAWN BY	RLK
CHECKED BY	LPM

SR 0065 SECTION B24 DISTRICT 11-0 COUNTY BEAVER ROUTE SECTION SHEET 51 OF 127
 NEW SETBACKS, TOWNSHIP AND CONWAY BROADWAY REVISIONS DATE BY

LEGEND
 ROCK APRON / CHANNEL LINING
 (SEE EAST PLAN FOR DETAILS)



PLAN

SCALE: 1" = 50 FEET

SR 2004

P1 STA 74+26.62

A = 65°48'33" - RT

D = 748.34'

L = 708.93'

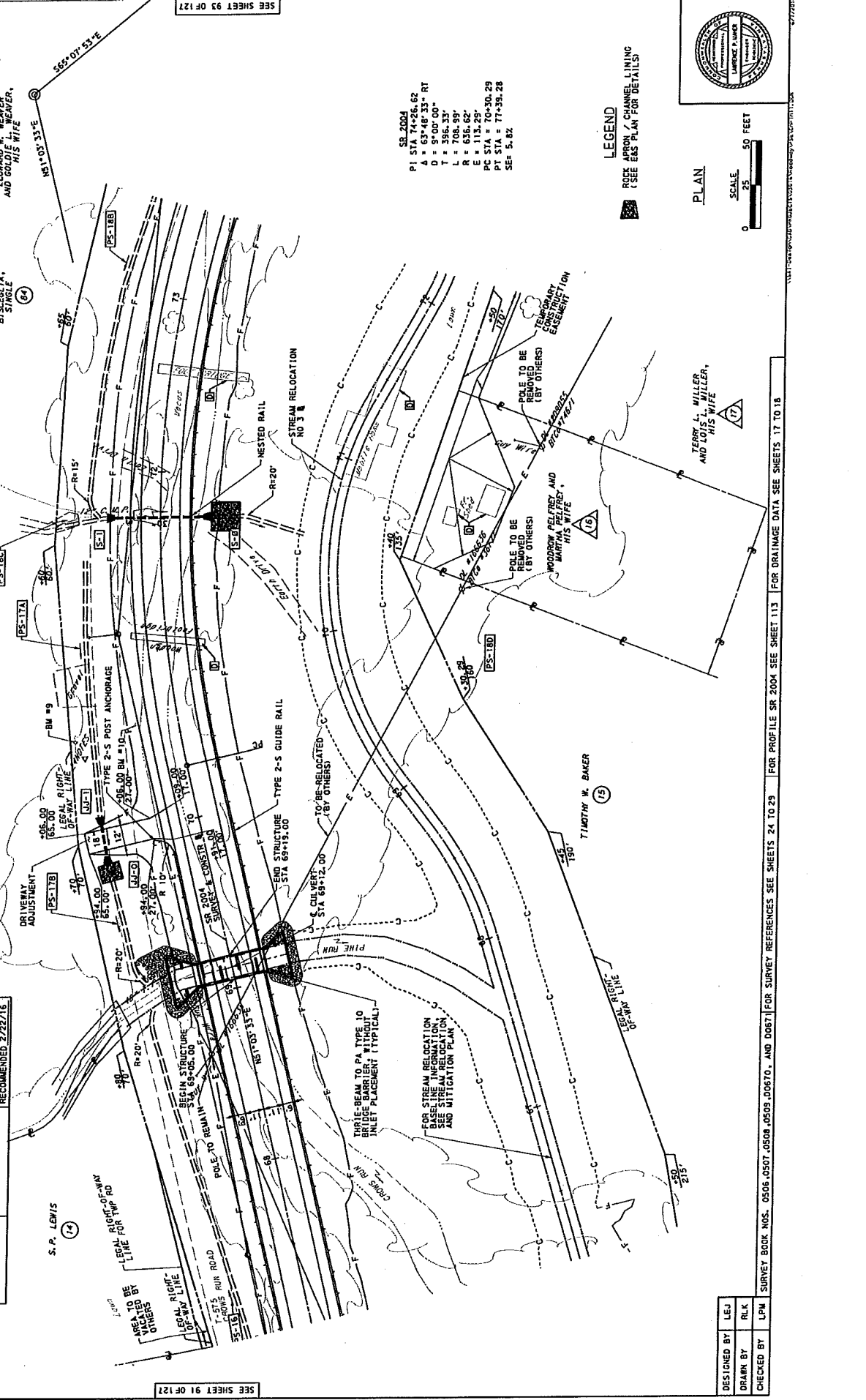
R = 636.62'

E = 113.25'

PC STA = 70+30.29

PT STA = 77+39.28

SE = 5.82



STRUCTURE DATA

STATION	EXISTING	PROPOSED
	N/A	63'-12.00"
TYPE	N/A	PRECAST CONCRETE BOX CULVERT
SPAN	N/A	12'-0"
CLEARANCE	N/A	7'-6"
ROADWAY WIDTH	N/A	34'-6 1/2"
SKIN	N/A	50"
STRUCTURE NO.		5-36302
		RECOMMENDED 2/22/15

REVISIONS

NO.	DATE	BY
1		
2		
3		
4		
5		

DISTRICT COUNTY ROUTE SECTION SHEET

11-0 BEAVER * * 92 OF 127

NEW SEMICOLEY TOWNSHIP AND CONWAY BOROUGH

SR 0665 SECTION B26 SR 2004 SECTION B06

CARL KEHNER AND HIS WIFE

ROBERT BLANK AND HIS WIFE

LEONARD W. WEAVER AND GOLDIE L. WEAVER, HIS WIFE

SR 710 STA. 761.48

SR 2004 SURVEY & CONSTR. RR SPIKE IN 24" WALNUT

ELEV. 762.27

SR 2004 SURVEY & CONSTR. RR SPIKE IN WALNUT

SR 2004 SURVEY & CONSTR. RR SPIKE IN WALNUT

SR 2004 SURVEY & CONSTR. RR SPIKE IN WALNUT

ELEV. 761.48

SR 2004 SURVEY & CONSTR. RR SPIKE IN WALNUT

LEGEND

POLE APRON / CHANNEL LINING (SEE EAS PLAN FOR DETAILS)

SCALE 0 25 50 FEET

DESIGNED BY LEU

DRAWN BY R/LK

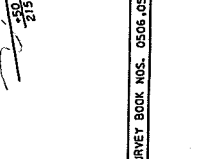
CHECKED BY L/PW

SURVEY BOOK NOS. 0506, 0507, 0508, 0509, 0507, 0508, 0509, 0507, 0508, 0509, 0507, 0508, 0509, 0507, 0508, 0509

FOR PROFILE SR 2004 SEE SHEETS 24 TO 29

FOR SURVEY REFERENCES SEE SHEETS 24 TO 29

FOR DRAINAGE DATA SEE SHEETS 17 TO 18



SR 2004

P1 STA 74+26.62

A = 65°48'33" - RT

D = 748.34'

L = 708.93'

R = 636.62'

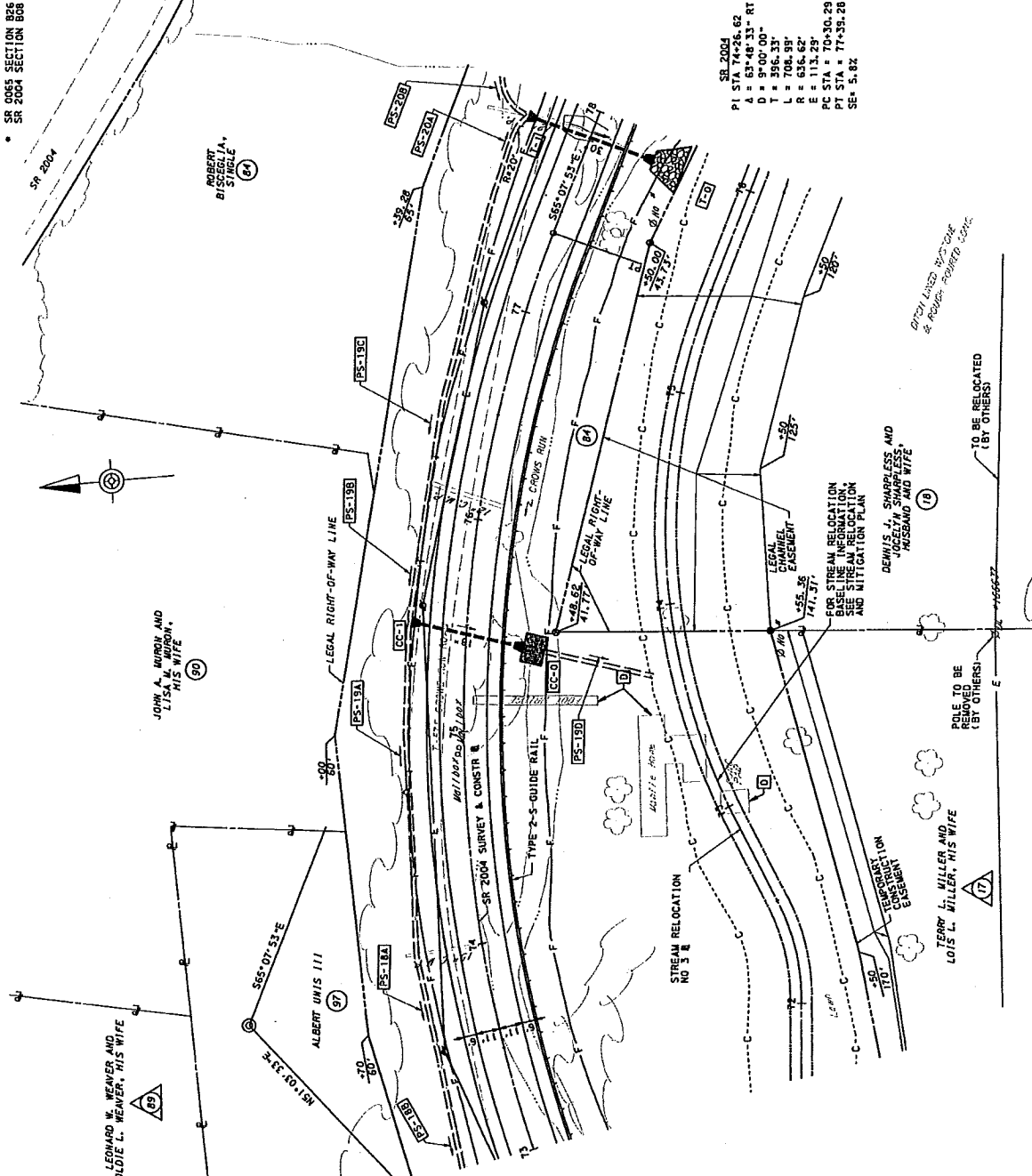
E = 113.25'

PC STA = 70+30.29

PT STA = 77+39.28

SE = 5.82

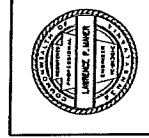
DISTRICT	COUNTY	ROUTE	SECTION	SHEET
11-0	BEAVER			33 OF 127
REVISION NUMBER	REVISIONS	DATE	BY	



SR 2004
 PI STA 74+28.62
 A = 63°48'33" RT
 D = 9°00'00"
 T = 396.33'
 L = 708.39'
 R = 636.62'
 E = 113.29'
 PC STA = 70+30.29
 PT STA = 77+35.26
 SET = 5.82

SCALE
 0 25 50 FEET

LEGEND
 ROCK APRON / CHANNEL LINING
 (SEE EAS PLAN FOR DETAILS)



PLAN

SEE SHEET 92 OF 127

SEE SHEET 94 OF 127

DESIGNED BY	LEJ
DRAWN BY	RLK
CHECKED BY	LPH

SURVEY BOOK NOS. 0506,0507,0508,0509,100510, AND 0067 FOR SURVEY REFERENCES SEE SHEETS 24 TO 28 FOR PROFILE SR 2004 SEE SHEET 114 FOR DRAINAGE DATA SEE SHEETS 17 TO 18

DISTRICT	COUNTY	ROUTE	SECTION	SHEET
11-0	BEAVER	SR 204	SECTION 808	# 94 OF 127
NO.	DATE	BY		
REVISIONS				

NO.	DATE	BY	REVISIONS

STRUCTURE DATA	
STATION	PROPOSED
0+75	204+40
TYPE	SIMPLE SPAN STEEL MULTISPIRDER BRIDGE PA. I-BEAM BRIDGE
SPAN	25'-0"
CLEARANCE	8'-0"
ROADWAY WIDTH	9'-9 1/2"
SKER	24'-0"
STRUCTURE NO.	S-35952 RECOMMENDED 10-06-2014

HERBERT SHARPLESS, A WIDOWER AND DENNIS J. SHARPLESS, A MARRIED MAN

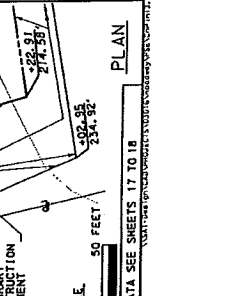
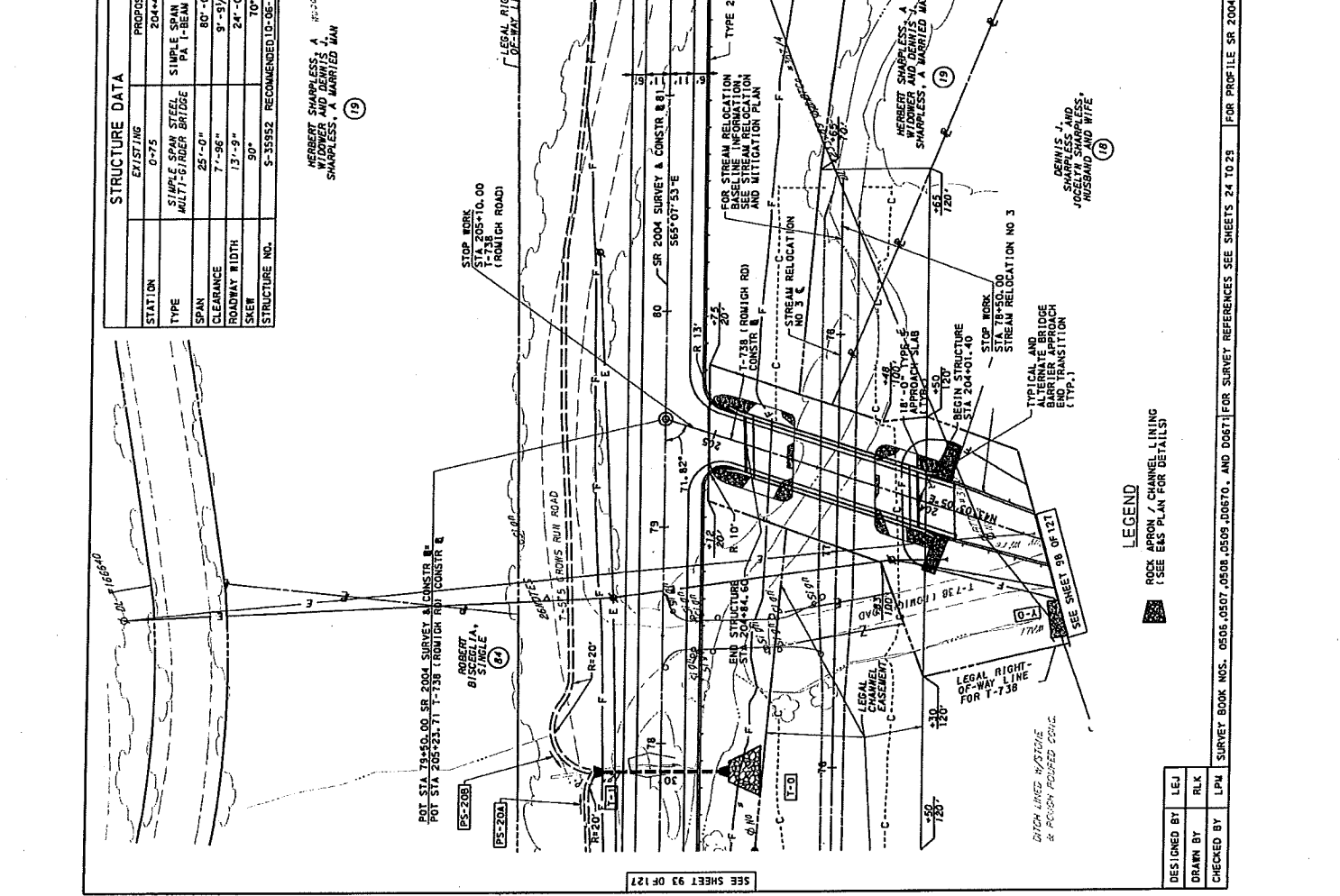
POT STA 79+50.00 SR 2004 SURVEY & CONSTR B
 POT STA 205+23.71 T-738 (ROMIGH RD) CONSTR B

ELIZABETH J. MALSTON
 58,2004 PL STA 85+00.10
 A = 25°53'04" LT
 D = 87°00'00"
 T = 164.55'
 L = 323.56'
 R = 716.20'
 E = 18.67'
 PG STA = 84+03.56
 PI STA = 87+27.15
 SE = 5.72

LESLIE J. TENNEY AND BESSIE M. TENNEY, HIS WIFE
 TO BE RELOCATED (BY OTHERS)
 TEMPORARY CONSTRUCTION EASEMENT

ROBERT W. WHIPPLE
 LEGAL RIGHT-OF-WAY LINE
 TIMOTHY M. REINHARD
 LEGAL DRAINAGE EASEMENT

HERBERT SHARPLESS, A WIDOWER AND DENNIS J. SHARPLESS, A MARRIED MAN
 STOP WORK STA 205+10.00 (ROMIGH ROAD)
 SR 2004 SURVEY & CONSTR B 81
 585+07.83 E
 TYPE 2-S GUIDE RAIL
 FOR STREAM RELOCATION AND MITIGATION PLAN
 HERBERT SHARPLESS, A WIDOWER AND DENNIS J. SHARPLESS, A MARRIED MAN
 STOP WORK STA 79+50.00 (ROMIGH ROAD) CONSTR B
 T-738 (ROMIGH RD) CONSTR B
 LEGAL CHANNEL CASSEMENT
 LEGAL RIGHT-OF-WAY LINE FOR T-738
 DENNIS J. SHARPLESS AND JOSELYN SHARPLESS, HIS WIFE
 STOP WORK STA 204+01.40
 BEGIN STRUCTURE T-738 (ROMIGH RD) CONSTR B
 TYPICAL AND BARBED END TRANSTION (TYP.)



SCALE: 1" = 30 FEET
 PLAN

DESIGNED BY LEJ
 DRAWN BY RLK
 CHECKED BY LPW SURVEY BOOK NOS. 0606.0507.0508.0509.06070. AND D0671 FOR SURVEY REFERENCES SEE SHEETS 24 TO 29 FOR PROFILE SR 2004 SEE SHEET 115 FOR PROFILE ROMIGH RD SEE SHEET 126 FOR DRAINAGE DATA SEE SHEETS 17 TO 18

SR 0065 SECTION B26	DISTRICT	ROUTE	SECTION	SHEET
SR 2004 SECTION 808	11-0	BEAVER	96	OF 127
REVISIONS		DATE		
BY	DATE	DATE	BY	

DISTRICT
 COUNTY
 TOWNSHIP
 BOROUGH

SECTION
 DATE
 DATE
 BY

SR 0065 SECTION B26
 SR 2004 SECTION 808

ANTON BORG JOHNSTON
 SUSAN M. WILCOX
 DAVID G. BARNES
 STABLE WAY

PARK QUARRY RD EXT
 PI STA 900+74.01
 A = 64°11'34" LT
 D = 48°33'20"
 T = 74.01'
 L = 132.20'
 R = 118.00'
 E = 21.29'
 PC STA = 900+00.00
 PT STA = 901+32.20
 SE = 4%

PARK QUARRY RD EXT
 PI STA 902+23.75
 A = 11°53'21" RT
 D = 48°33'21"
 L = 12.25'
 R = 118.00'
 E = 0.64'
 PC STA = 902+11.45
 PT STA = 902+35.95
 SE = RC

DRIVEWAY ADJUSTMENTS
 DRIVENWAY ADJUSTMENT
 DRIVENWAY ADJUSTMENT
 DRIVENWAY ADJUSTMENT
 DRIVENWAY ADJUSTMENT

DRIVEWAY STATIONS
 DRIVENWAY ADJUSTMENT
 DRIVENWAY ADJUSTMENT
 DRIVENWAY ADJUSTMENT
 DRIVENWAY ADJUSTMENT

PARK QUARRY RD EXT
 PI STA 904+92.50
 A = 90°00'00" LT
 D = 13°02'51"
 L = 55.37'
 T = 25.12'
 R = 32.00'
 E = 13.25'
 PC STA = 904+60.90
 PT STA = 905+11.17
 SE = RC

PARK QUARRY RD EXT
 PI STA 904+92.50
 A = 90°00'00" LT
 D = 13°02'51"
 L = 55.37'
 T = 25.12'
 R = 32.00'
 E = 13.25'
 PC STA = 904+60.90
 PT STA = 905+11.17
 SE = RC

PARK QUARRY RD EXT
 PI STA 904+92.50
 A = 90°00'00" LT
 D = 13°02'51"
 L = 55.37'
 T = 25.12'
 R = 32.00'
 E = 13.25'
 PC STA = 904+60.90
 PT STA = 905+11.17
 SE = RC

PARK QUARRY RD EXT
 PI STA 904+92.50
 A = 90°00'00" LT
 D = 13°02'51"
 L = 55.37'
 T = 25.12'
 R = 32.00'
 E = 13.25'
 PC STA = 904+60.90
 PT STA = 905+11.17
 SE = RC

PARK QUARRY RD EXT
 PI STA 904+92.50
 A = 90°00'00" LT
 D = 13°02'51"
 L = 55.37'
 T = 25.12'
 R = 32.00'
 E = 13.25'
 PC STA = 904+60.90
 PT STA = 905+11.17
 SE = RC

PARK QUARRY RD EXT
 PI STA 904+92.50
 A = 90°00'00" LT
 D = 13°02'51"
 L = 55.37'
 T = 25.12'
 R = 32.00'
 E = 13.25'
 PC STA = 904+60.90
 PT STA = 905+11.17
 SE = RC

PARK QUARRY RD EXT
 PI STA 904+92.50
 A = 90°00'00" LT
 D = 13°02'51"
 L = 55.37'
 T = 25.12'
 R = 32.00'
 E = 13.25'
 PC STA = 904+60.90
 PT STA = 905+11.17
 SE = RC

PARK QUARRY RD EXT
 PI STA 904+92.50
 A = 90°00'00" LT
 D = 13°02'51"
 L = 55.37'
 T = 25.12'
 R = 32.00'
 E = 13.25'
 PC STA = 904+60.90
 PT STA = 905+11.17
 SE = RC

SR 2004 SURVEY & CONSTR # 2004-02-08
 SR 2004 SURVEY & CONSTR # 2004-02-08
 SR 2004 SURVEY & CONSTR # 2004-02-08
 SR 2004 SURVEY & CONSTR # 2004-02-08

SR 2004 SURVEY & CONSTR # 2004-02-08
 SR 2004 SURVEY & CONSTR # 2004-02-08
 SR 2004 SURVEY & CONSTR # 2004-02-08
 SR 2004 SURVEY & CONSTR # 2004-02-08

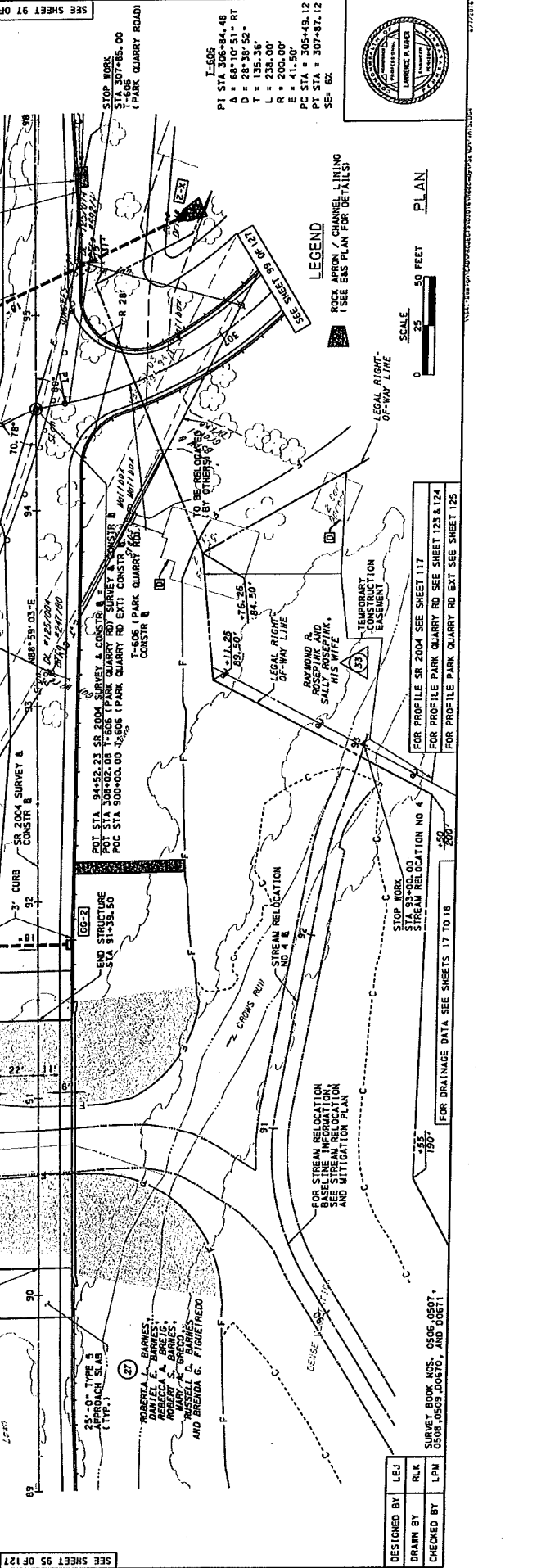
SR 2004 SURVEY & CONSTR # 2004-02-08
 SR 2004 SURVEY & CONSTR # 2004-02-08
 SR 2004 SURVEY & CONSTR # 2004-02-08
 SR 2004 SURVEY & CONSTR # 2004-02-08

SR 2004 SURVEY & CONSTR # 2004-02-08
 SR 2004 SURVEY & CONSTR # 2004-02-08
 SR 2004 SURVEY & CONSTR # 2004-02-08
 SR 2004 SURVEY & CONSTR # 2004-02-08



DESIGNED BY	LEJ
DRAWN BY	RLK
CHECKED BY	LPM

FOR PROFILE SR 2004 SEE SHEET 117
 FOR PROFILE SR 2004 SEE SHEET 123 & 124
 FOR DRAINAGE DATA SEE SHEETS 17 TO 18



DISTRICT	COUNTY	ROUTE	SECTION	SHEET
11-0	BEAVER	SR 2004	065	57 OF 127
REVISION NUMBER	REVISIONS	DATE	BY	

SR 0665 SECTION B26
SR 2004 SECTION 008

BM #13
ELEV. 865.80
LT STA. 100+02.00
SR 2004 SURVEY
CONSTR. &
REVISIONS
BT CD #552/4, #211564

SR 2004
PI STA = 98+00.00
A = 14°13'04" LT
D = 14°19'28"
L = 123.12'
T = 238.85'
R = 400.00'
E = 16.52'
PC STA = 97+17.36
PT STA = 99+56.25
SEE 62

DAVID G. BARNES, SINGLE MAN
785-26
785-26
785-26
785-26

TEMPORARY CONSTRUCTION EASEMENT

LANDSCAPED DEPRESSION DEPRESSION EAS PLAN FOR DETAILS

TEMPORARY EASEMENT

DRIVEWAY ADJUSTMENT

LESA L. MARR STAGE INDIVIDUAL

TEMPORARY EASEMENT

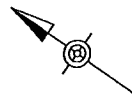
LANDSCAPED DEPRESSION DEPRESSION EAS PLAN FOR DETAILS

TEMPORARY EASEMENT

DRIVEWAY ADJUSTMENT

LESA L. MARR STAGE INDIVIDUAL

TEMPORARY EASEMENT



KATHY BORING JOHNSTON

STOP WORK
STA 99+00.00
OFFSET 0772
SR 2004 SEC 808

LIMIT OF WORK
STA 100+00.00
SEC 0662 OFFSET 0990
NEW CURB SEE 808
BEAVER COUNTY TOWNSHIP

SUSAN M. WILCOX

LESA L. MARR

LESA L. MARR

LESA L. MARR

LESA L. MARR

LESA L. MARR

LESA L. MARR

SR 2004 SURVEY & CONSTR. TO BE RELOCATED BY OTHERS

SR 2004

SR 2004

SR 2004

SR 2004

SR 2004

SR 2004

POINT STA 100+00.00 SR 2004 SURVEY & CONSTR. & B.E.

POINT STA 60+91.77 SR 2004 & ANN. 0.65

POINT STA 60+91.77 SR 2004 & ANN. 0.65

POINT STA 60+91.77 SR 2004 & ANN. 0.65

POINT STA 60+91.77 SR 2004 & ANN. 0.65

POINT STA 60+91.77 SR 2004 & ANN. 0.65

POINT STA 60+91.77 SR 2004 & ANN. 0.65

LEGEND
PSEE APRON / CHANNEL LINING
PSEE EAS PLAN FOR DETAILS



PLAN



DESIGNED BY	LEJ
DRAWN BY	RLK
CHECKED BY	LPM

SEE SHEET 96 OF 127

SR SURVEY BOOK NOS. 0506, 0507, 0508, 0509, 06070, AND 06071 FOR PROFILE SR 2004 SEE SHEET 118 FOR DRAINAGE DATA SEE SHEETS 17 TO 18

DISTRICT	COUNTY	ROUTE	SECTION	SHEET
SR 0005 SECTION B06	BEAVER	NEW SERVICELY TOWNSHIP AND CONWAY BOROUGH		SR 00-127
SR 2004 SECTION B08				
REVISION NUMBER	REVISIONS	DATE	BY	

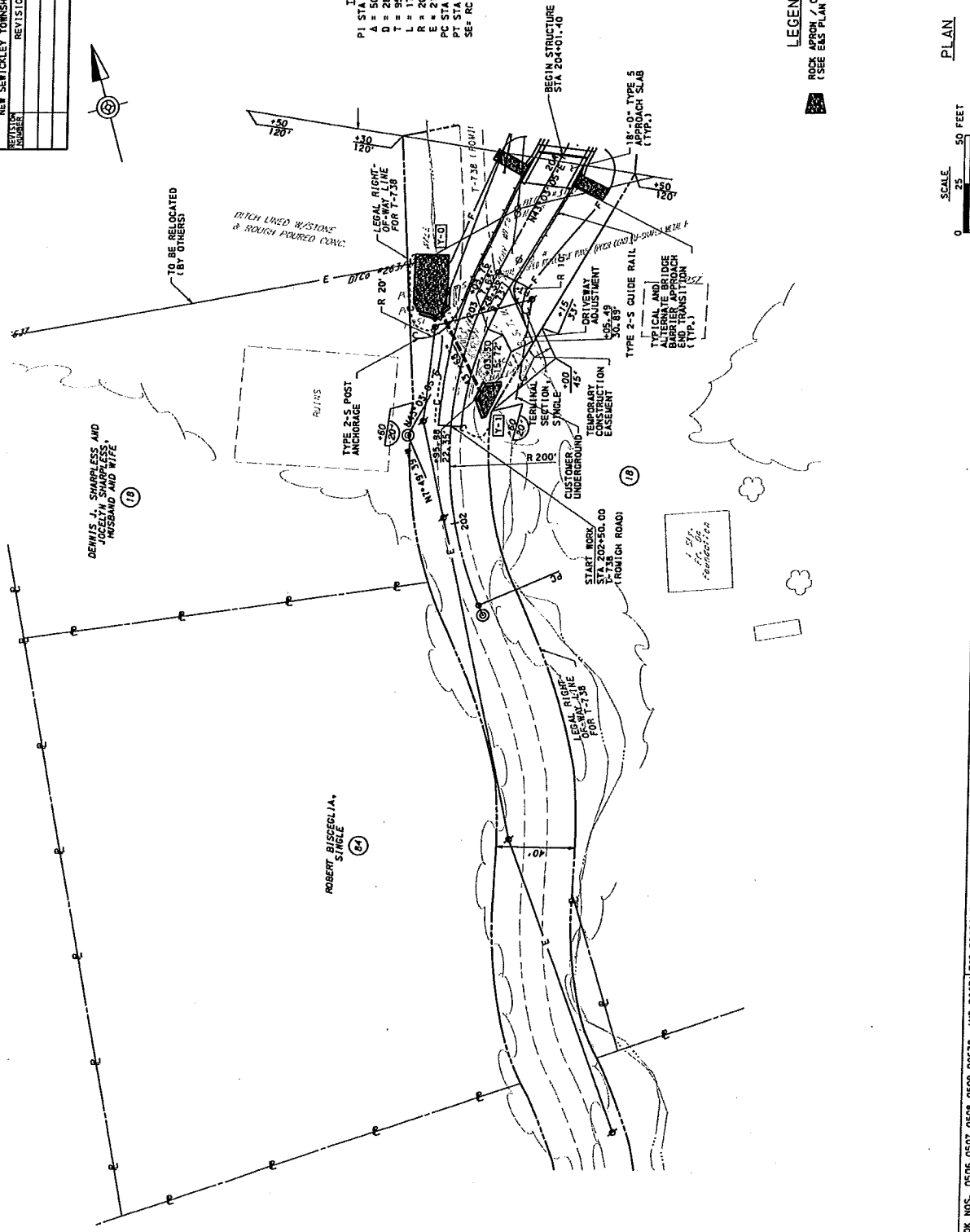
• SR 0005 SECTION B06
SR 2004 SECTION B08



DEWIS, J. SHARPLESS AND
JOCELYN SHARPLESS
HUSBAND AND WIFE

ROBERT DISCEGLIA,
SINGLE

I-738
PI STA = 202+50.80
A = 50°52'44" RT
D = 28°38'52"
T = 95.14'
L = 177.60'
E = 200.00'
PC STA = 201+55.67
PT STA = 203+33.27
SE = RC



LEGEND
ROCK APRON CHANNEL LINING
(SEE E&S PLAN FOR DETAILS)

PLAN



DESIGNED BY	LEJ
DRAWN BY	RLK
CHECKED BY	LPM

SURVEY BOOK NOS. 0506, 0507, 0508, 0509, 0600, AND 0601 FOR PROF (LE T-738 (FROM ICH RD) SEE SHEET 126 FOR DRAINAGE DATA SEE SHEETS 17 TO 18

SEE SHEET 94 OF 127

DATE PLOTTED: 08/20/2018 10:00 AM

DISTRICT	COUNTY	ROUTE	SECTION	SHEET
11-0	BEAVER			95 OF 127
* SR 0066 SECTION 606 SR 2004 SECTION 606				
REVISION NUMBER	REVISIONS	DATE	BY	

TEMPORARY CONSTRUCTION EASEMENT

RAYMOND R. ROSEFINK AND SALLY ROSEFINK, HIS WIFE

BRYAN G. GILES AND LINDA S. LANG AND JOHN A. DESAMTIS, HIS WIFE

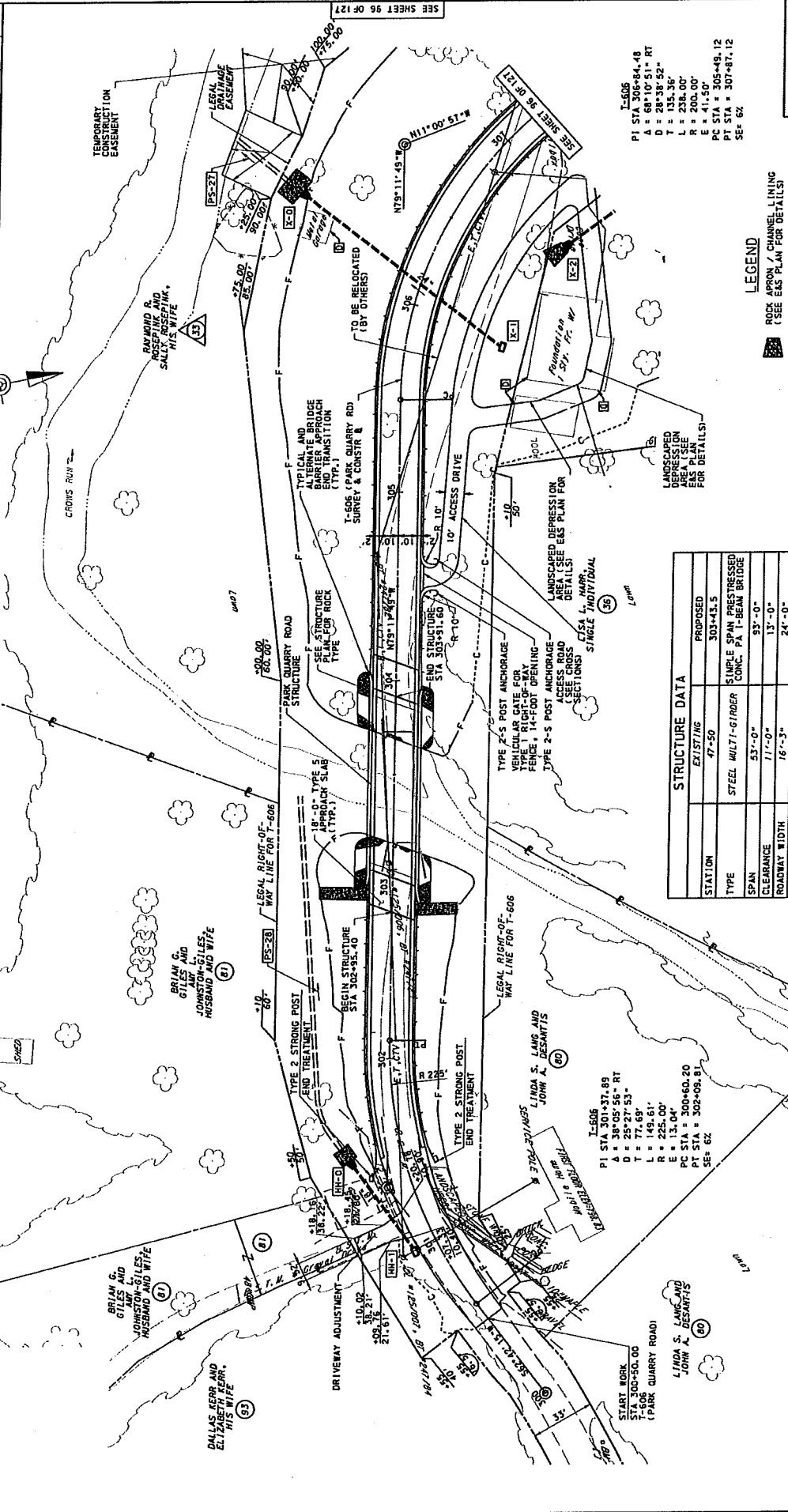
DALLAS FERR AND ELIZABETH FERR, HIS WIFE

LEGAL RIGHT-OF-WAY LINE FOR T-606

LEGAL RIGHT-OF-WAY LINE FOR T-606

LEGAL RIGHT-OF-WAY LINE FOR T-606

LEGAL RIGHT-OF-WAY LINE FOR T-606



T-606
 PI STA 306+84.48
 A = 68°10'51\"/>

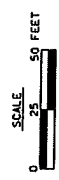
T-606
 PI STA 301+27.89
 A = 25°27'25\"/>

T-606
 PI STA 300+60.20
 A = 13.04°

STRUCTURE DATA	
STATION	PROPOSED
47+50	303+43.5
TYPE	STEEL MULTI-GIRDER CONC. PA. I-BEAM BRIDGE
SPAN	53'-0"
CLEARANCE	17'-0"
ROADWAY WIDTH	18'-3"
SKEW	24'-0"
STRUCTURE NO.	5-35850 RECOMMENDED 10-E-2014

LEGEND
 POLE FOR CHANNEL LINING
 (SEE EAS PLAN FOR DETAILS)

PLAN



DESIGNED BY	LEJ
DRAWN BY	RLK
CHECKED BY	LPM

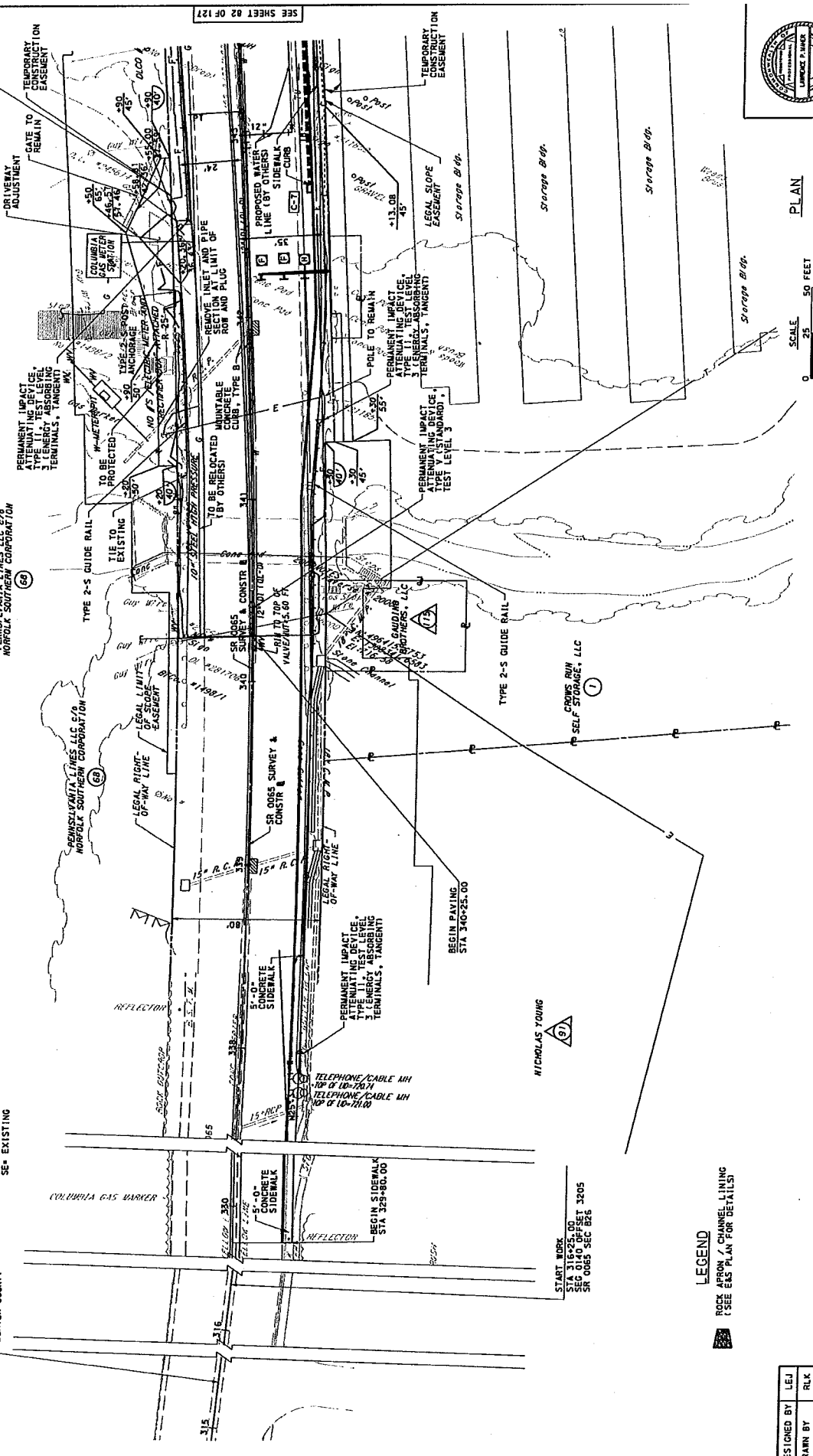
FOR DRAINAGE DATA SEE SHEETS 17 TO 18

DISTRICT	ROUTE	SECTION	SHEET
SR 0065 SECTION B26	BEAVER	11-0	LOD OF 127
SR 2004 SECTION B08	NEW SEYMOUR TOWNSHIP AND CONWAY BOROUGH	REVISIONS	DATE BY



SR 0065
 PI STA 337+03.74
 Δ = 12°14'00" LT
 D = 1°00'00" (CHORD)
 T = 614.01'
 L = 1283.35'
 E = 5783.65'
 PC STA 330+89.73
 PT STA = 343+13.08
 SE= EXISTING

LIMIT OF WORK
 STA 315+25.00
 BEG 3105
 SR 0065 SEC B26
 CONWAY BOROUGH
 BEAVER COUNTY



SCALE:
 1" = 50 FEET

PLAN



DESIGNED BY	LEJ
DRAWN BY	RLK
CHECKED BY	LPM

SURVEY BOOK NOS. 0506, 0507, 0508, 0509, 00670, AND 00671 FOR PROFILE SR 0065 SEE SHEET 119 FOR DRAINAGE DATA SEE SHEETS 17 TO 18

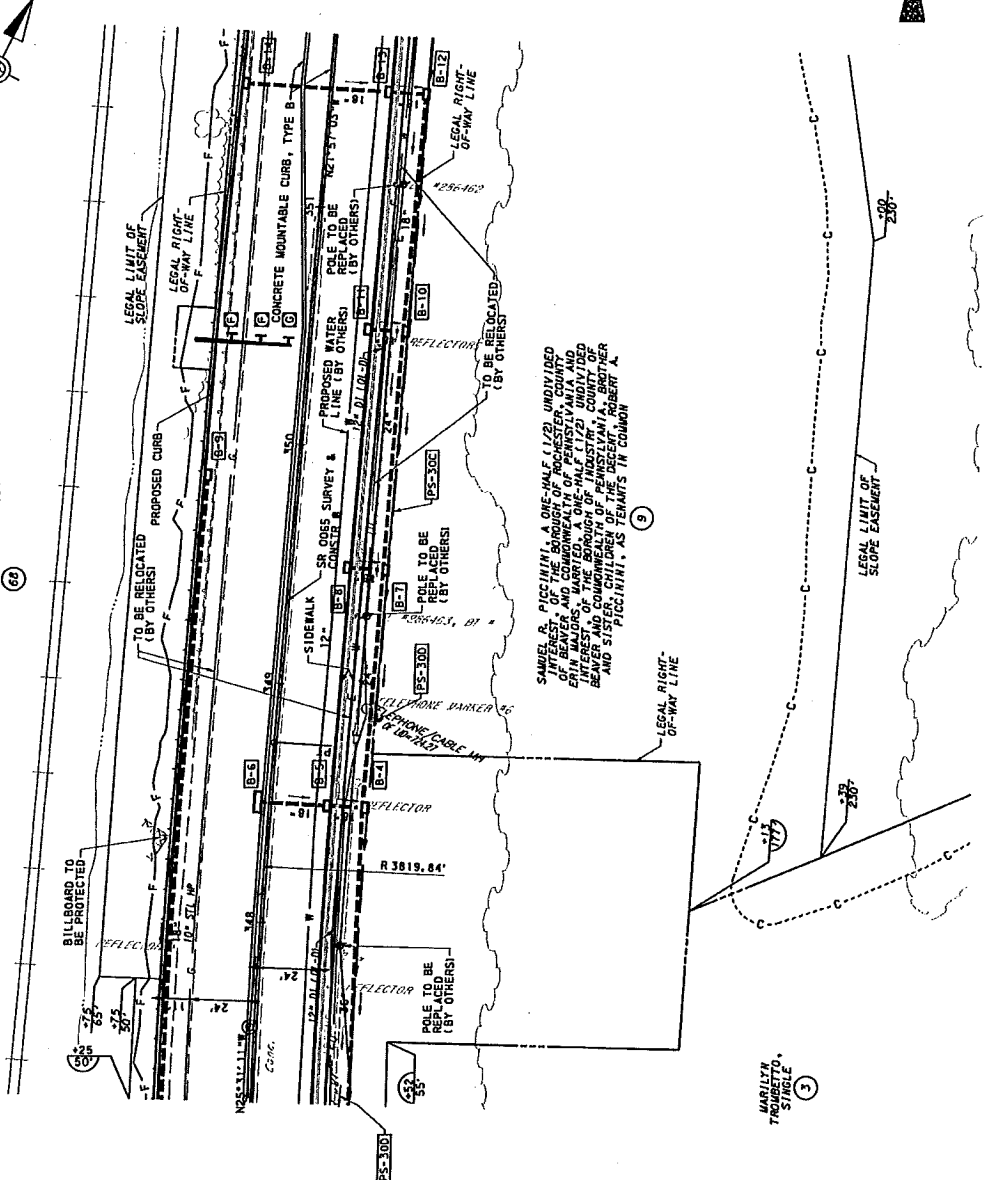
LEGEND
 ROCK ARMOR / CHANNEL LINING
 (SEE PLAN FOR DETAILS)

SEE SHEET 02 OF 127

DISTRICT	COUNTY	ROUTE	SECTION	SHEET
11-0	BEAVER			101 OF 127
REVISION NUMBER	NEW	SEMICLEY TOWNSHIP AND CONWAY BOROUGH	REVISED	DATE

SR 0065 SECTION B26
SR 2004 SECTION B08

PENNSYLVANIA LINES, LLC d/b/a
MORFOLK SOUTHERN CORPORATION



SR 0065
 PI STA = 347+56.32
 A = 3°34'08" RT
 D = 1°30'00" (CHORD)
 T = 119.01'
 B = 231.53'
 E = 148.83'
 PC STA = 346+37.31
 PT STA = 348+75.24
 SE* EXISTING

SAMUEL B. PISCIMINI, A ONE-HALF SIZED UNDIVIDED INTEREST OF THE BOROUGH OF BEAVER AND COMMONWEALTH OF PENNSYLVANIA AND EIGHTH OF THE BOROUGH OF SEMICLEY AND ONE-HALF SIZED UNDIVIDED INTEREST OF THE BOROUGH OF MORFOLK, PENNSYLVANIA, CO-BROTHER AND SISTER CHILDREN OF THE DECEASED ROBERT A. PISCIMINI, AS IS COMMON

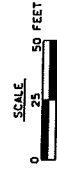
SEE SHEET 02 OF 127

SEE SHEET 100 OF 127



LEGEND
 ROCK APRON / CHANNEL LINING
 (SEE ELS PLAN FOR DETAILS)

PLAN



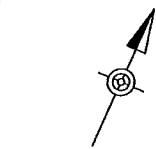
DESIGNED BY	LEJ
DRAWN BY	RLK
CHECKED BY	LPM

SURVEY BOOK NOS. 0506, 0507, 0508, 0509, 06070, AND 06071 FOR PROFILE SR 0065 SEE SHEET 120 FOR DRAINAGE DATA SEE SHEETS 17 TO 18

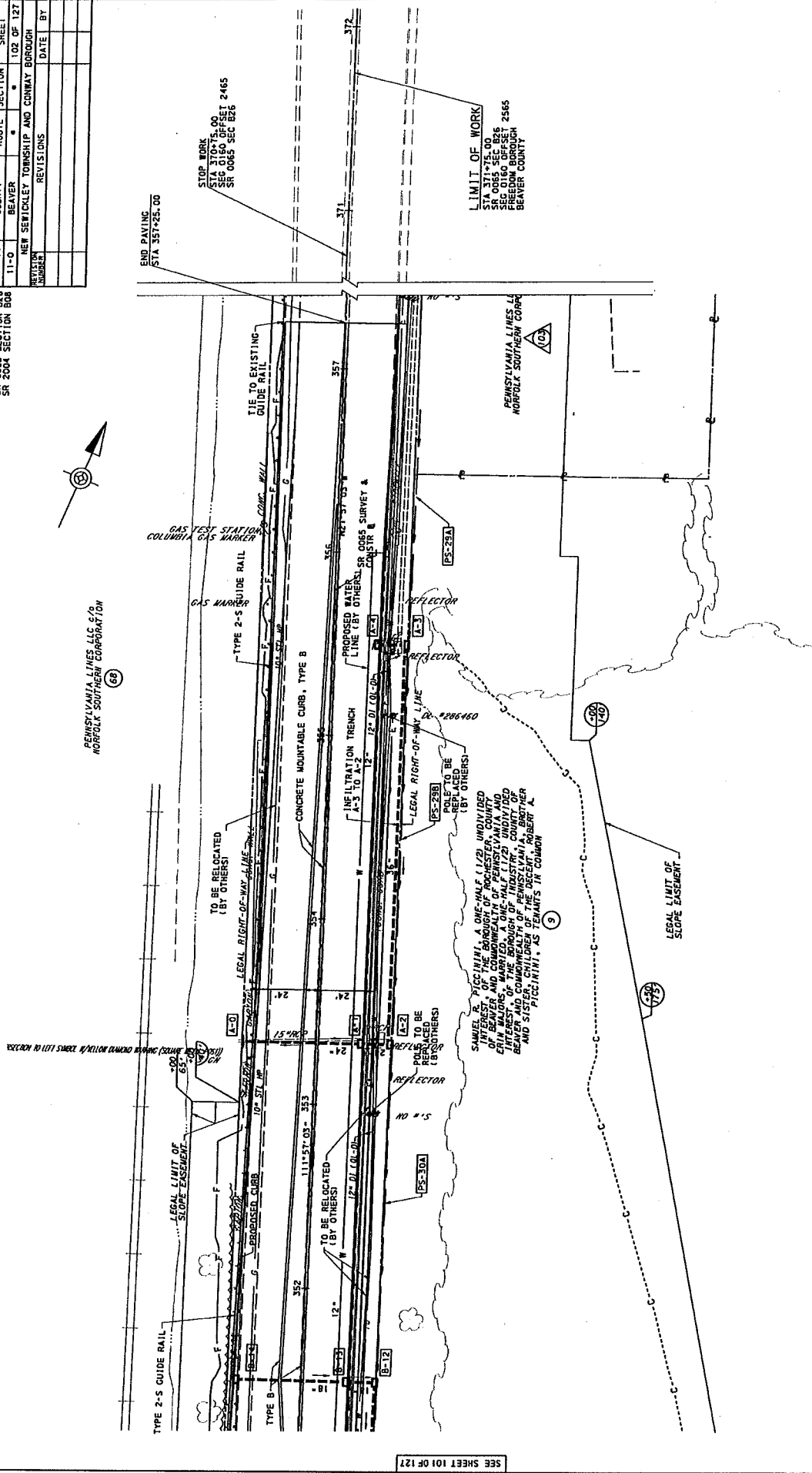
DATE: 11/17/2011

DISTRICT	COUNTY	ROUTE	SECTION	SHEET
11-0	BEAVER	NEW SEWICKLEY TOWNSHIP AND CONWAY BOROUGH	•	102 OF 127
SR 0065 SECTION B26	SR 2004 SECTION B08			
REVISION NUMBER	REVISIONS	DATE	BY	

SR 0065 SECTION B26
SR 2004 SECTION B08



PENSYLVANIA LINES LLC c/o
NORFOLK SOUTHERN CORPORATION



STOP WORK
SITE WORKS, CO
SEG 0160 OFFSET 2465
SR 0065 SEC B26

LIMIT OF WORK
SR 0065 SEC B26
SEG 0160 OFFSET 2565
BEAVER BOROUGH
BEAVER COUNTY

LEGEND
ROCK APRON / CHANNEL LINING
(SEE GAS PLAN FOR DETAILS)



PLAN

DESIGNED BY	LEJ
DRAWN BY	RLX
CHECKED BY	LPM

SEE SHEET 101 OF 127 | SURVEY BOOK NOS. 0506, 0507, 0508, 0509, 00670, AND 00671 FOR PROFILE SR 0065 SEE SHEET 121 | FOR DRAINAGE DATA SEE SHEETS 17 TO 18

