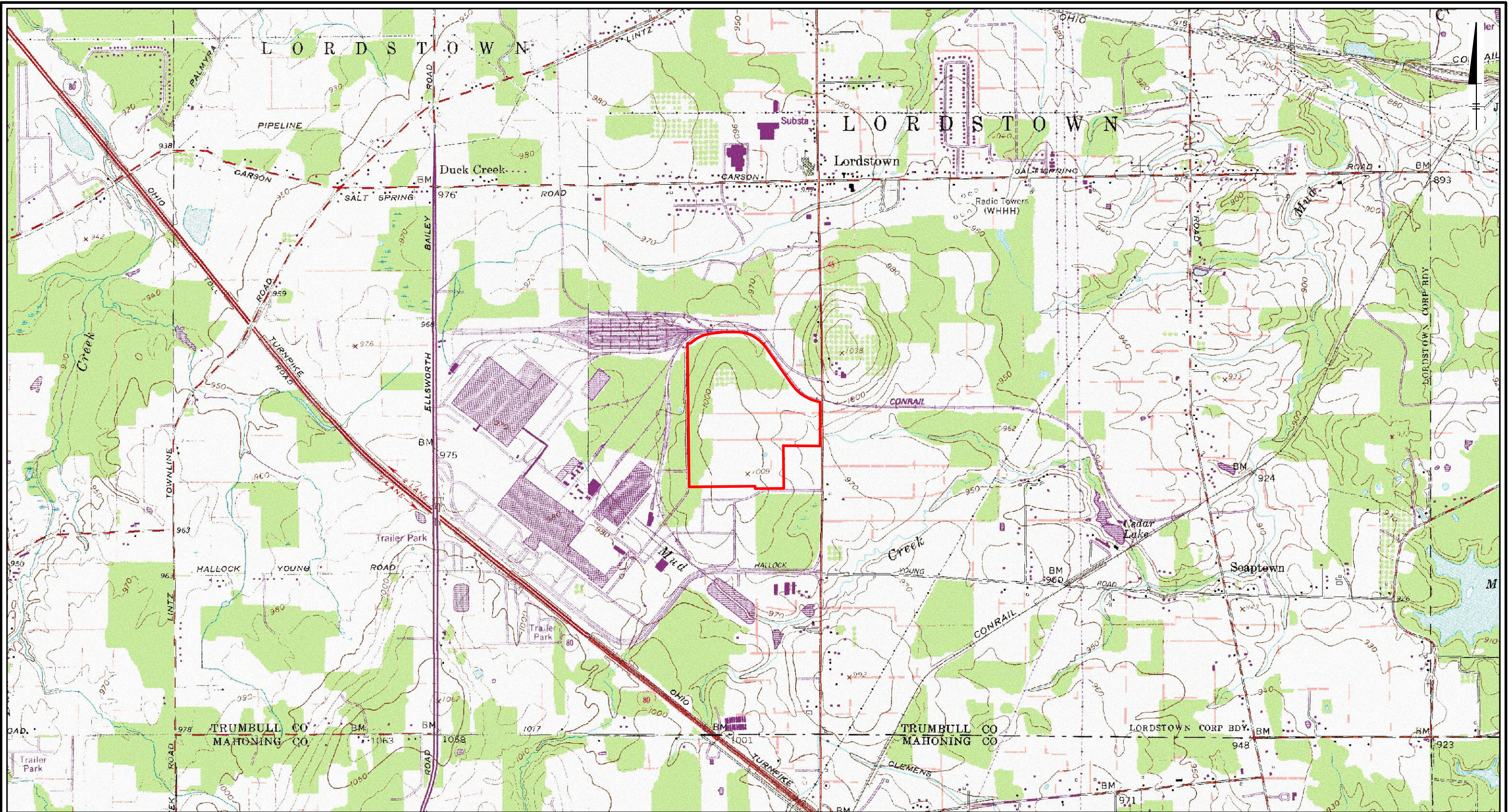
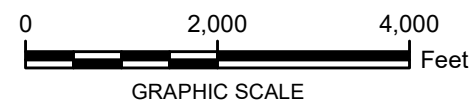


City: Div/Group: Created By: Last Saved By: BGraves
Project (Project #):
C:\Users\graves\Documents\General Motors\Magellan - Privileged and Confidential\GIS\MXDs\404\Figure 1- Topo.mxd 1/6/2020 1:05:25 PM



Legend
 Proposed Site Location

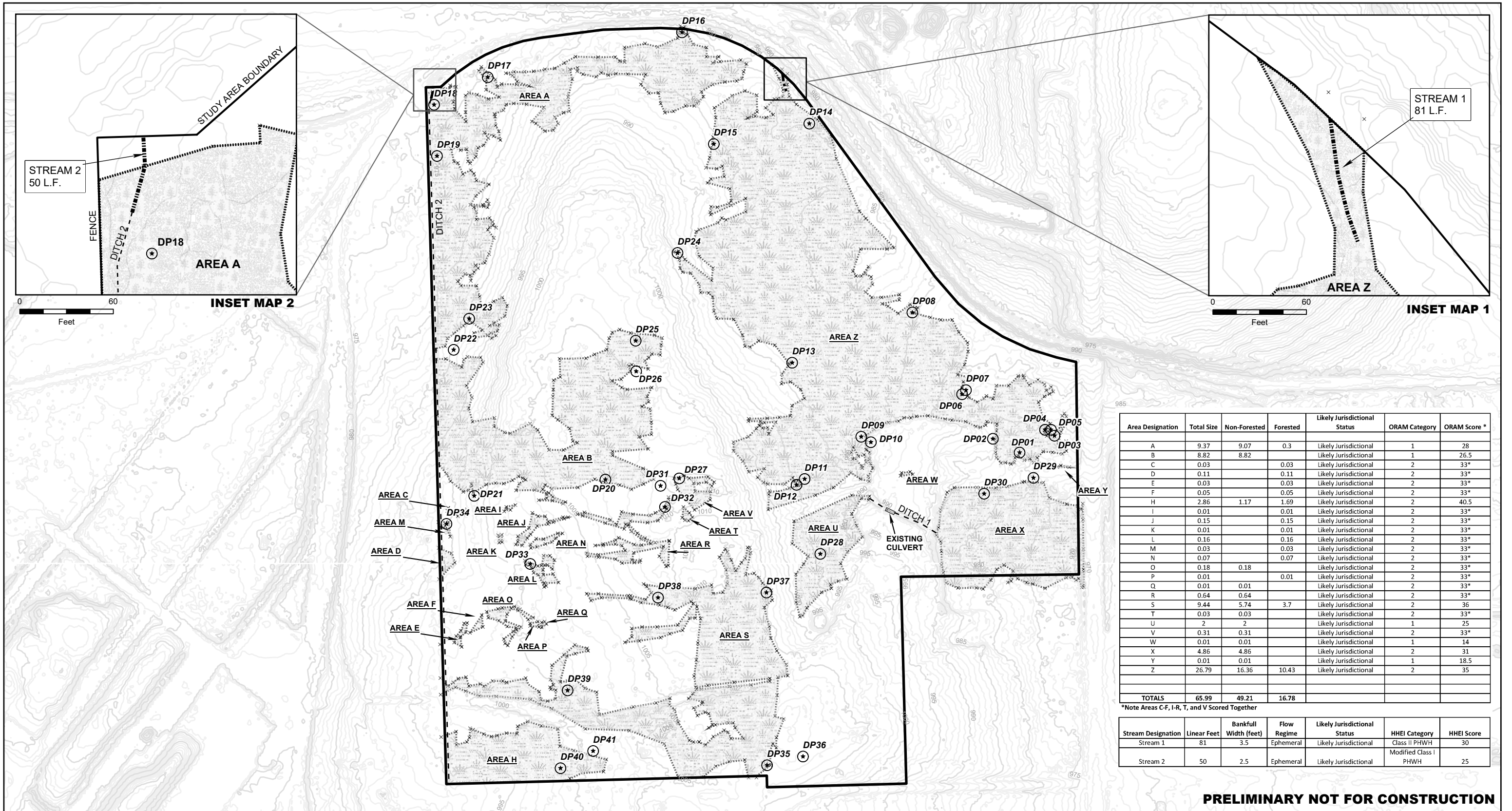
NOTES:
1. USGS TOPOGRAPHIC QUADRANGLE FOR WARREN, OH
OBTAINED FROM ESRI IMAGE SERVICE



GENERAL MOTORS, LLC
LORDSTOWN, OHIO
LORDSTOWN BATTERY CELL PLANT PROJECT

TOPOGRAPHIC MAP

 **ARCADIS** Design & Consultancy
for natural and built assets **FIGURE 1**

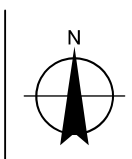
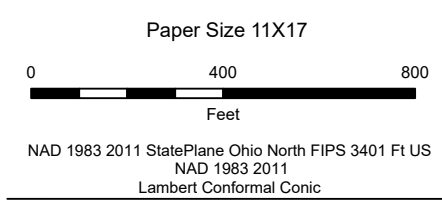


Area Designation	Total Size	Non-Forested	Forested	Likely Jurisdictional Status	ORAM Category	ORAM Score *
A	9.37	9.07	0.3	Likely Jurisdictional	1	28
B	8.82	8.82		Likely Jurisdictional	1	26.5
C	0.03		0.03	Likely Jurisdictional	2	33*
D	0.11		0.11	Likely Jurisdictional	2	33*
E	0.03		0.03	Likely Jurisdictional	2	33*
F	0.05		0.05	Likely Jurisdictional	2	33*
H	2.86	1.17	1.69	Likely Jurisdictional	2	40.5
I	0.01		0.01	Likely Jurisdictional	2	33*
J	0.15		0.15	Likely Jurisdictional	2	33*
K	0.01		0.01	Likely Jurisdictional	2	33*
L	0.16		0.16	Likely Jurisdictional	2	33*
M	0.03		0.03	Likely Jurisdictional	2	33*
N	0.07		0.07	Likely Jurisdictional	2	33*
O	0.18	0.18		Likely Jurisdictional	2	33*
P	0.01		0.01	Likely Jurisdictional	2	33*
Q	0.01	0.01		Likely Jurisdictional	2	33*
R	0.64	0.64		Likely Jurisdictional	2	33*
S	9.44	5.74	3.7	Likely Jurisdictional	2	36
T	0.03	0.03		Likely Jurisdictional	2	33*
U	2	2		Likely Jurisdictional	1	25
V	0.31	0.31		Likely Jurisdictional	2	33*
W	0.01	0.01		Likely Jurisdictional	1	14
X	4.86	4.86		Likely Jurisdictional	2	31
Y	0.01	0.01		Likely Jurisdictional	1	18.5
Z	26.79	16.36	10.43	Likely Jurisdictional	2	35
TOTALS	65.99	49.21	16.78			

*Note Areas C-F, I-R, T, and V Scored Together

Stream Designation	Linear Feet	Bankfull Width (feet)	Flow Regime	Likely Jurisdictional Status	HHEI Category	HHEI Score
Stream 1	81	3.5	Ephemeral	Likely Jurisdictional	Class II PHWH	30
Stream 2	50	2.5	Ephemeral	Likely Jurisdictional	Modified Class I PHWH	25

PRELIMINARY NOT FOR CONSTRUCTION



LEGEND

SITE BOUNDARY	DATA POINT	DITCH	ELEVATION CONTOUR
WETLAND FLAG	WETLAND	STREAM	



PROJECT MAGELLAN
WETLAND LOCATION MAP
 GENERAL MOTORS, LLC
 VILLAGE OF LORDSTOWN, TRUMBULL COUNTY, OHIO

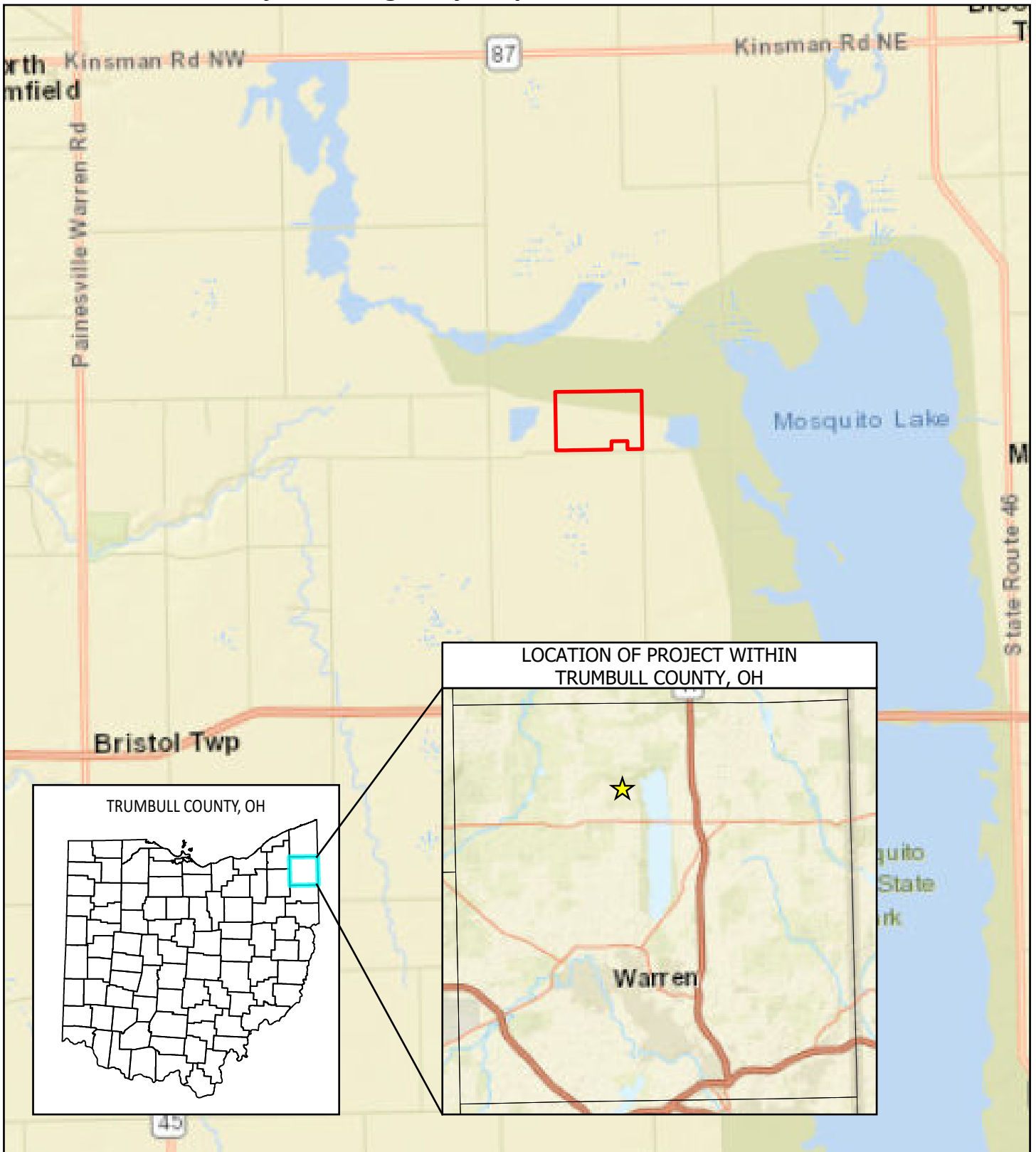
Job Number | 11181610
 Revision | A
 Date | Jan 06, 2020

Figure 3

M:\10_Kunka\GM Lordstown OH\Lordstown.aprx
 © 2020. While every care has been taken to prepare this map, GHD make no representations or warranties about its accuracy, reliability, completeness or suitability for any particular purpose and cannot accept liability and responsibility of any kind (whether in contract, tort or otherwise) for any expenses, losses, damages and/or costs (including indirect or consequential damage) which are or may be incurred by any party as a result of the map being inaccurate, incomplete or unsuitable in any way and for any reason.

Appendix A.2

Location of Project on Highway Map



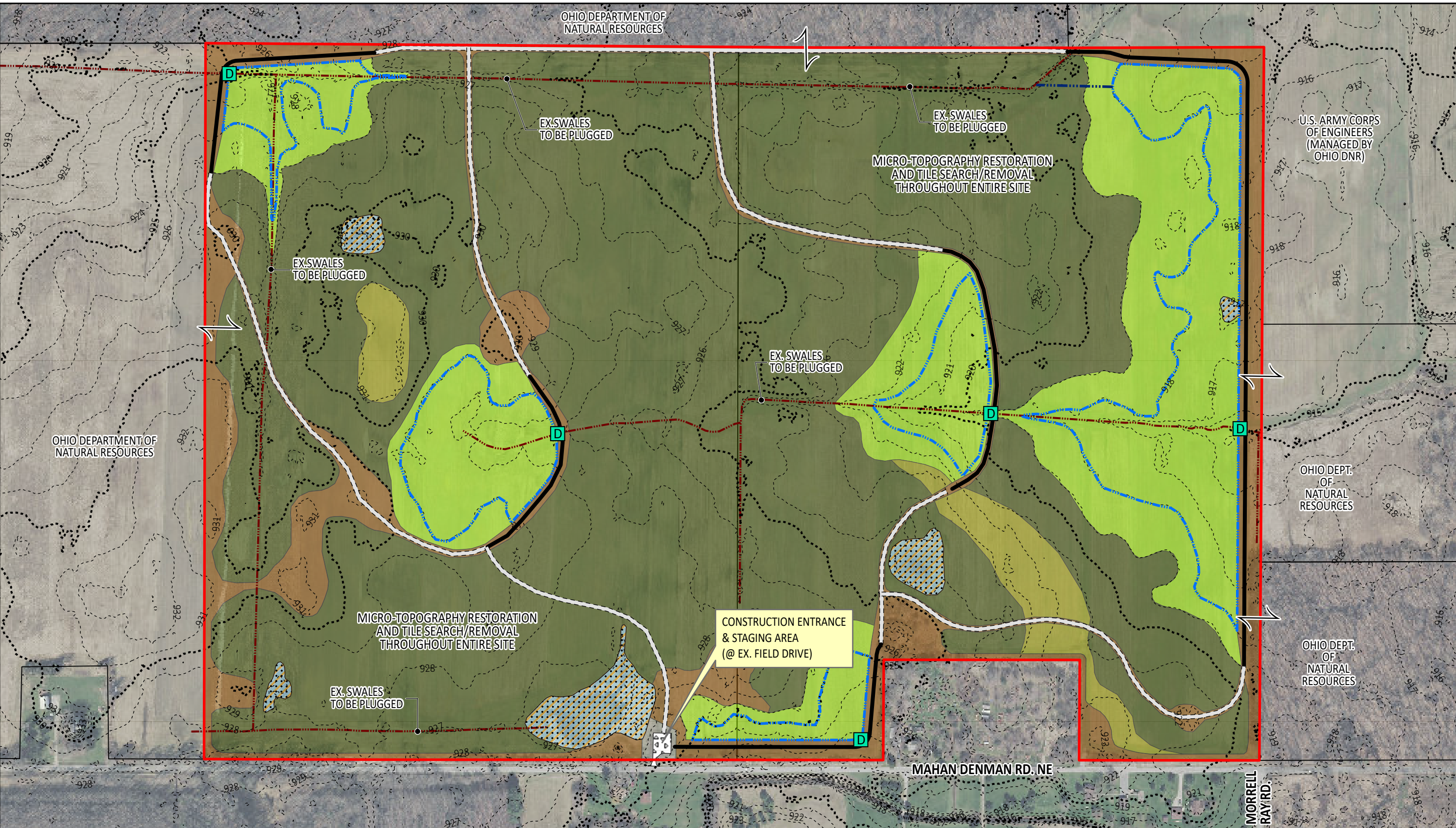
LOCATION OF PROJECT WITHIN TRUMBULL COUNTY, OH

TRUMBULL COUNTY, OH

MECCA TOWNSHIP, TRUMBULL COUNTY, OHIO

**MOSQUITO CREEK WILDLIFE AREA
WETLAND MITIGATION SITE**

1/8/2020 P:\Prospects\OH\Wahoning\ODNR Lands\GIS\ODNR.aprx



1" = 300'
(on 11"x17")



APPENDIX B
CONCEPTUAL HABITAT PLAN

MOSQUITO CREEK WILDLIFE AREA
WETLAND MITIGATION SITE

B

- | | | | | | | | |
|--|-----------------------------------|--|---------------------------------|--|--|--|--------------------------------------|
| | PROJECT LIMITS (171.6 AC.) | | OUTLET STRUCTURE | | RE-ESTABLISHED NON-FORESTED WETLANDS | | REHABILITATED EXISTING WETLANDS |
| | EXISTING WETLANDS (ESTIMATED) | | PROPOSED BERM | | RE-ESTABLISHED FORESTED WETLANDS | | APPROX. MAX. POOL |
| | EXISTING SWALE/DRAINAGEWAY | | PROPOSED SWALE | | RE-ESTABLISHED FORESTED WETLANDS/ UPLANDS MOSAIC | | CONSTRUCTION ENTRANCE & STAGING AREA |
| | PROPOSED MAINTENANCE/ACCESS TRAIL | | RE-ESTABLISHED FORESTED UPLANDS | | | | |