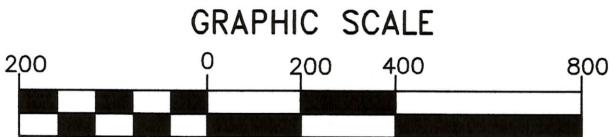


APPROXIMATE 1,985 CUBIC YARDS OF RIVER BOTTOM TO BE DREDGED AND DISPOSED IN AN APPROVED MANNER.

HATCHED LINED AREA AT DOCK LINE INDICATES DREDGE AREA: 5' BELOW POOL UPSTREAM OF CELL #4 12' BELOW POOL DOWN STREAM.

PURPOSE: MOORING AND LOADING COAL BARGES .
 DATUM: MEAN SEA LEVEL



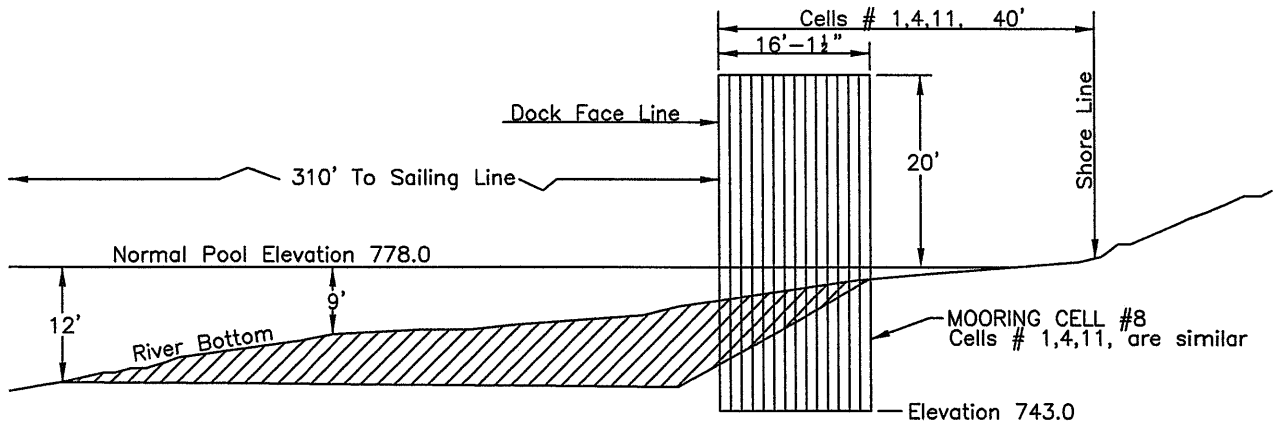
(IN FEET)
 1 inch = 400 ft.

GALLATIN FUELS, INC.
 LOCK 8 DOCK FACILITY
 MONONGAHELA RIVER - MILE 87.4
 FAYETTE COUNTY, STATE OF PENNA.
 SCALE: 1" = 400' SHEET 1 OF 3

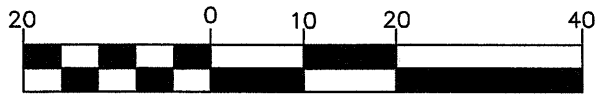
Earthtech, Inc.
 Uniontown Office P.O. Box 4-A Lemont Furnace, PA 15456
 Telephone: 724-439-1313 Fax: 724-439-0633
 www.earthtechinc.net

U:\Mining\Permits\Gallatin Fuels, Inc\Lock 8 Barge Loading Facility.dwg & data\1024map.dwg, 9/23/2021 3:17:57 PM

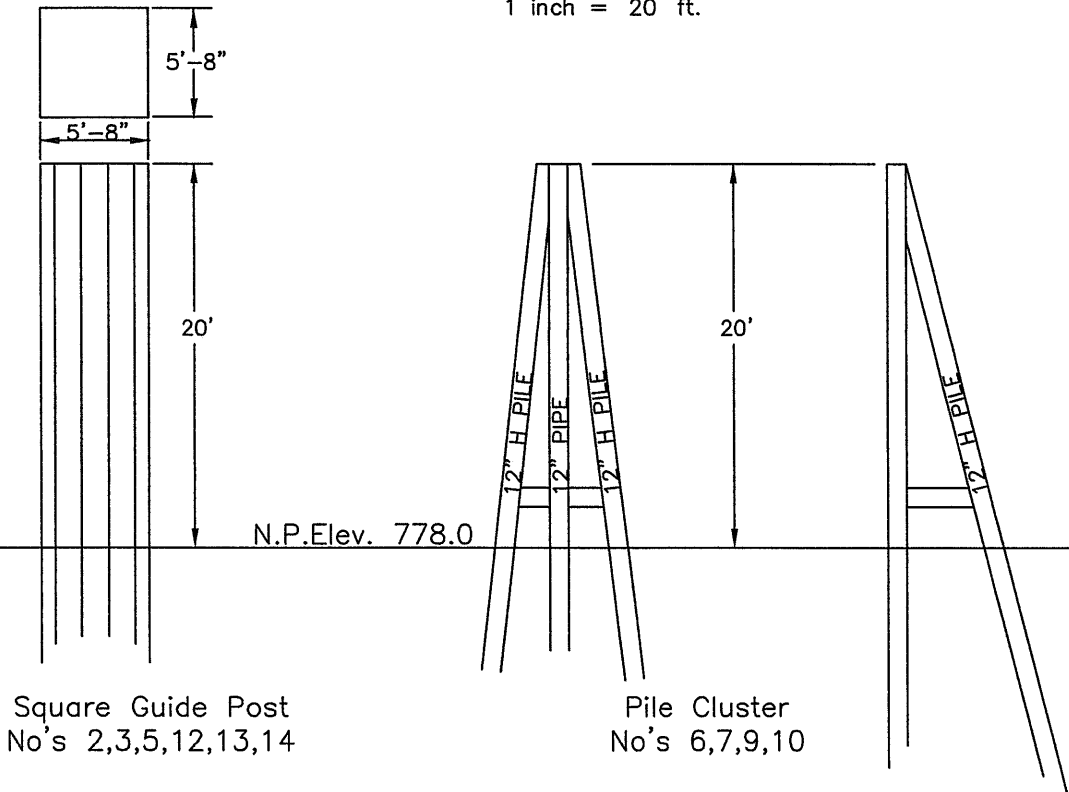
U:\Mining\Permits\Gallatin Fuels, Inc\Lock 8 Barge Loading Facility\dwg & data\1024map.dwg, 9/23/2021 3:17:28 PM



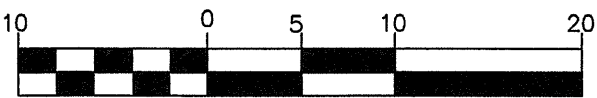
GRAPHIC SCALE



(IN FEET)
1 inch = 20 ft.



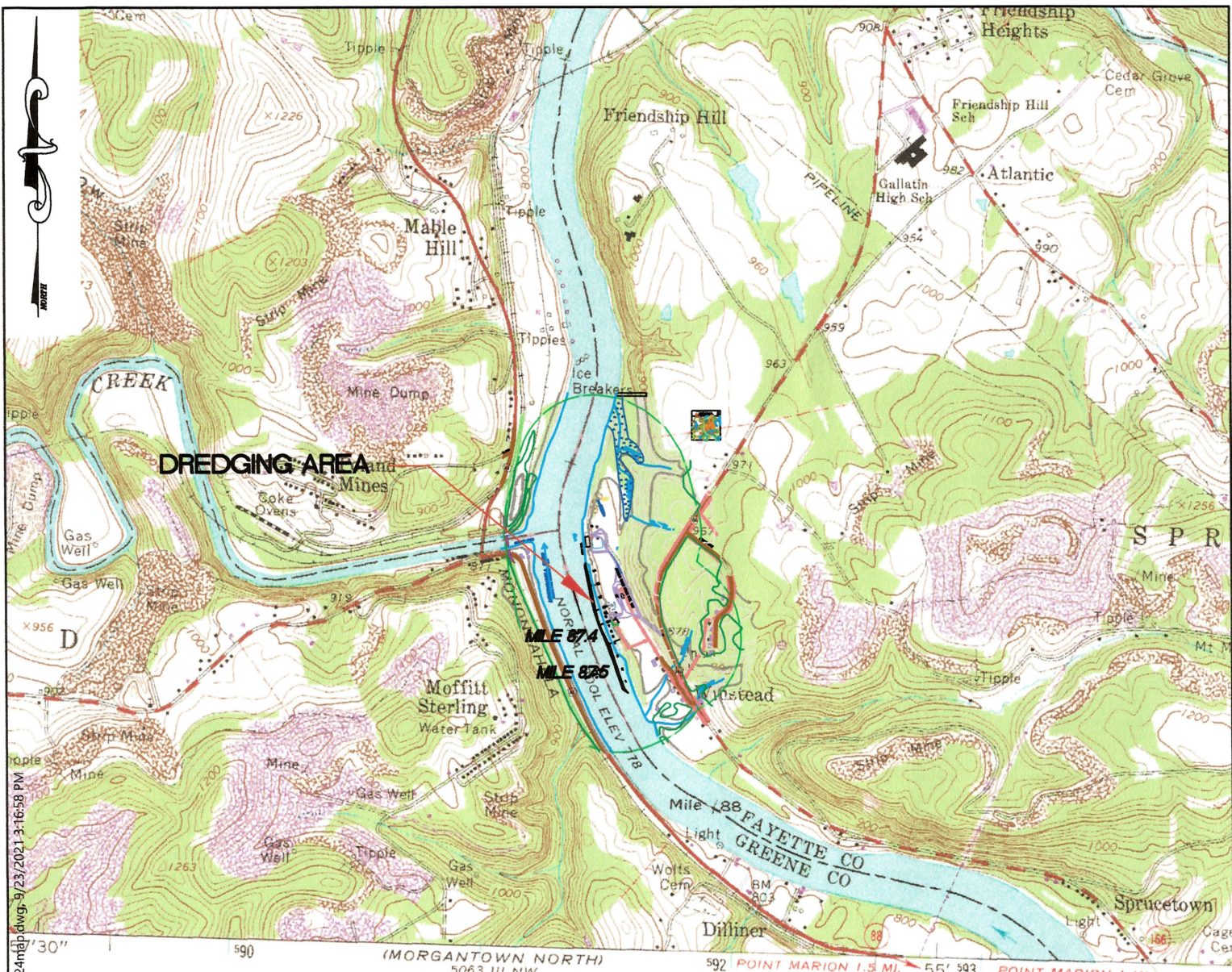
GRAPHIC SCALE



(IN FEET)
1 inch = 10 ft.

GALLATIN FUELS, INC.
 LOCK 8 DOCK FACILITY
 MONONGAHELA RIVER - MILE 87.4
 FAYETTE COUNTY, STATE OF PENNA.
 SCALE: AS NOTED SHEET 2 OF 3

Earthtech, Inc.
 Uniontown Office P.O. Box 4-A Lemont Furnace, PA 15456
 Telephone: 724-439-1313 Fax: 724-439-0633
 www.earthtechinc.net



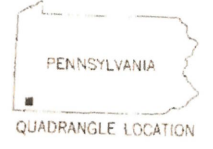
U:\Mining\Permits\Gallatin Fuels, Inc\Lock 8 Barge Loading Facility.dwg & data\1024.mxd 9/23/2021 3:16:58 PM

(MORGANTOWN NORTH)
5063 III NW

SCALE 1:24 000

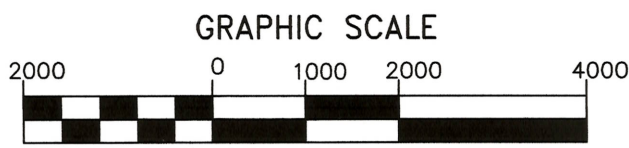


CONTOUR INTERVAL 20 FEET
NATIONAL GEODETIC VERTICAL DATUM OF 1929



THIS MAP COMPLIES WITH NATIONAL MAP ACCURACY STANDARDS
FOR SALE BY U. S. GEOLOGICAL SURVEY, RESTON, VIRGINIA 22092
A FOLDER DESCRIBING TOPOGRAPHIC MAPS AND SYMBOLS IS AVAILABLE ON REQUEST

Revisions shown in purple compiled in cooperation with Pennsylvania agencies from aerial photography



(IN FEET)
1 inch = 2000 ft.

GALLATIN FUELS, INC.
LOCK 8 DOCK FACILITY
MONONGAHELA RIVER - MILE 87.4
FAYETTE COUNTY, STATE OF PENNA.
SCALE: 1" = 2000' SHEET 3 OF 3

Earthtech, Inc.
Uniontown Office P.O. Box 4-A Lemont Furnace, PA 15456
Telephone: 724-439-1313 Fax: 724-439-0633
www.earthtechinc.net