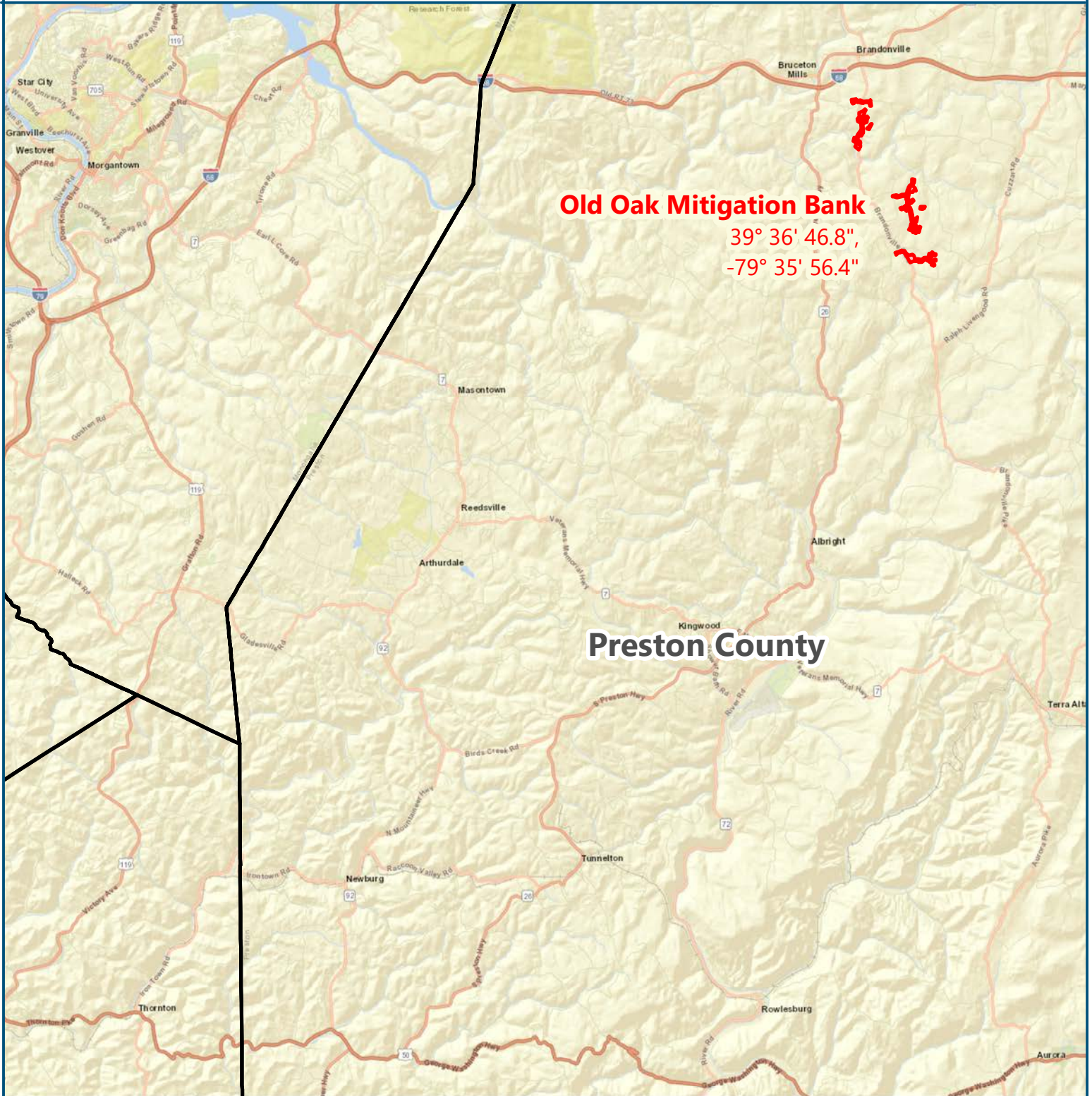


Directions from Interstate 79

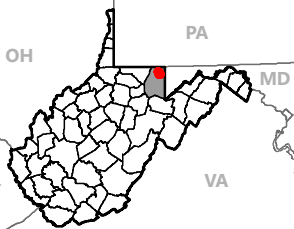
- (1) Take the exit for I-68 towards Cumberland (Exit 148).
- (2) Drive 23 miles and take exit for WV-26 towards Brucetone Mills (Exit 23). Turn Left off exit (1.5 miles).
- (3) Turn right onto Brandonville Pike/Church Street (4.3 miles): Turn right onto Gee Lick Rd (1.6 mi); turn left on Spiker Road (0.4 miles); at left-hand bend in road, continue straight to parking area at destination



Old Oak Mitigation Bank

39° 36' 46.8",
-79° 35' 56.4"

Preston County



Old Oak Mitigation Bank

Preston County, West Virginia



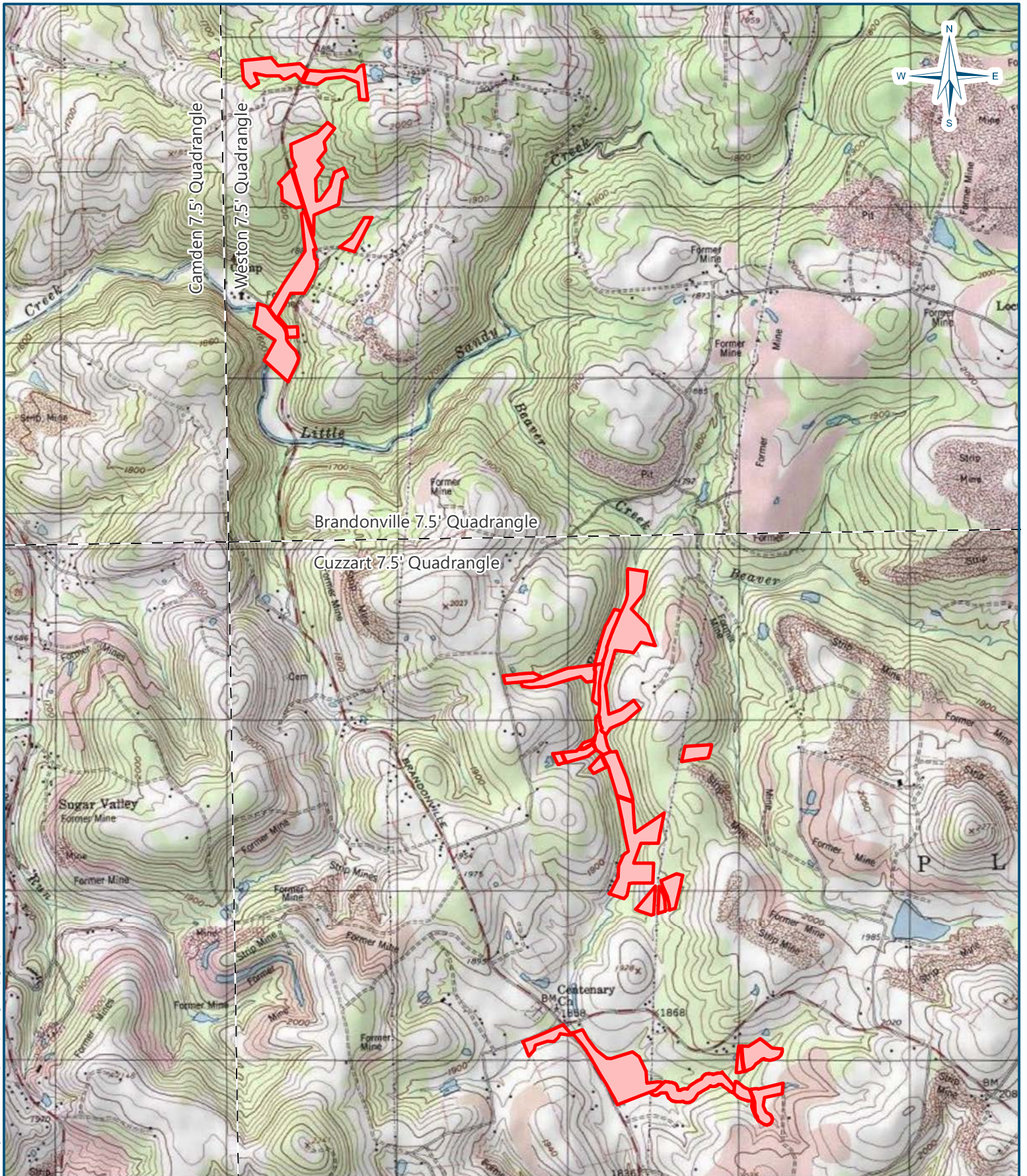
Figure 1
Site Location Map

Date: 2/16/2022

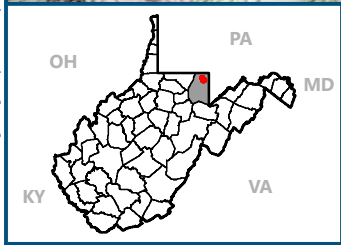
Drawn by: JAS

Checked by: KW





Document Path: E:\regis\mgs\Projects_Old Oak_Maps2\Prospectus\Figure2_topography.mxd



Old Oak Mitigation Bank

Preston County, West Virginia



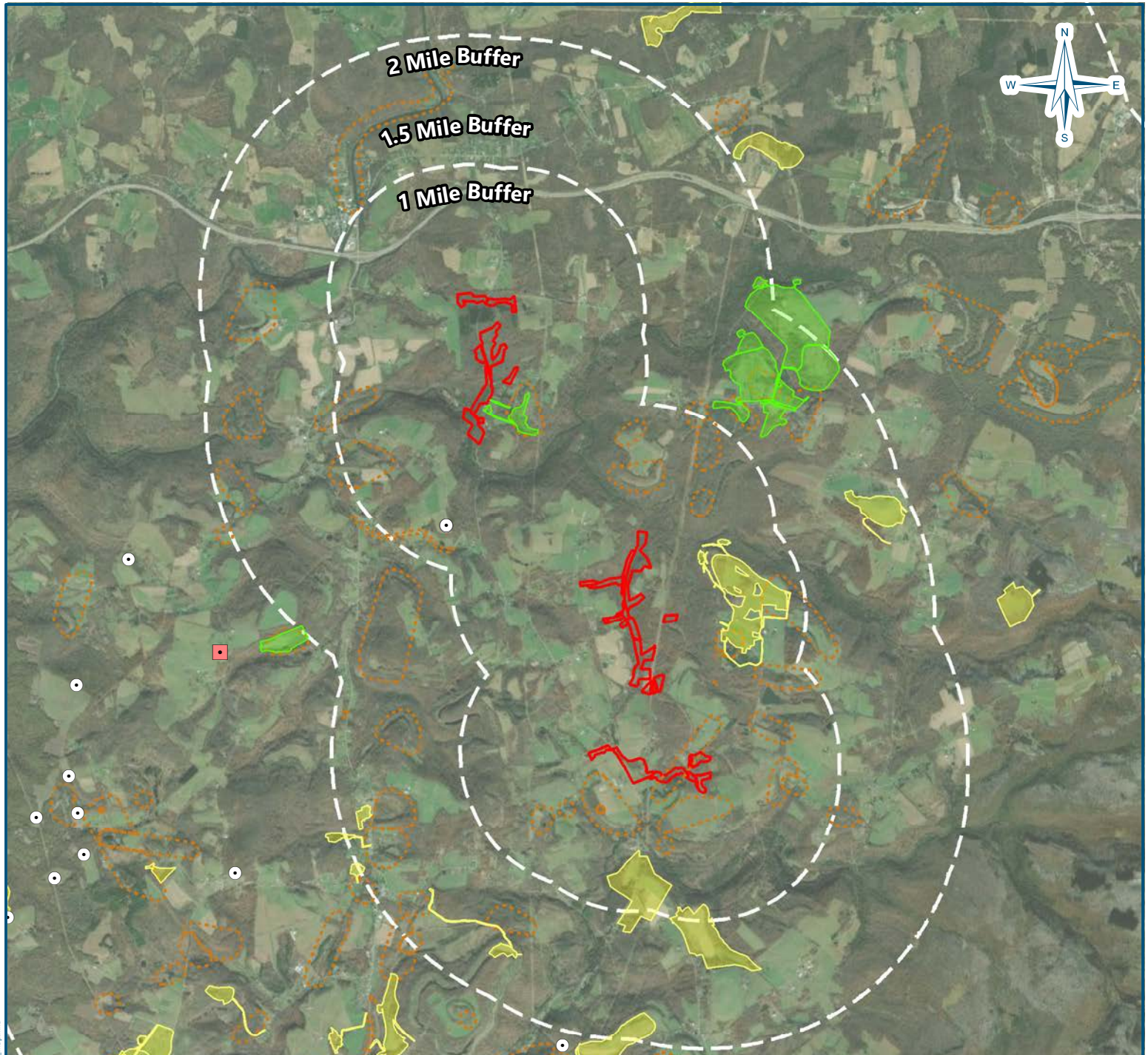
Figure 2
USGS Topography Map

Date: 2/21/2022

Drawn by: JAS

Checked by: KW





Map Key

Old Oak Mitigation Bank

Site Boundary

Oil and Gas Infrastructure

- Active Well
- Abandoned Well
- Plugged

Mining Areas

- Abandoned Mine Lands (Problem Areas)
- Underground Mine Limits

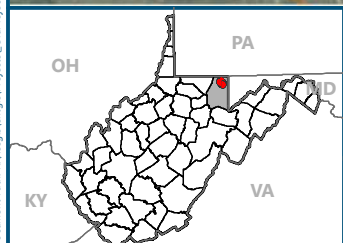
Mining Permits

- Released
- Revoked

Well Status	Bank Limits	1mi Buffer	2 mi Buffer
Active	0	0	2
Abandoned	0	0	0
Plugged	0	0	0

Mine Status	Bank Limits	1mi Buffer	2 mi Buffer
Released	0	1	2
Revoked	0	2	5
Abandoned *	0	16	15

**Abandoned Mine Land Problem Areas*
Note: Oil and gas infrastructure data were obtained from WVDEP in December 2021. Property boundaries are illustrated here for assessment purposes only and do not constitute survey-quality information. The aerial basemap was obtained from



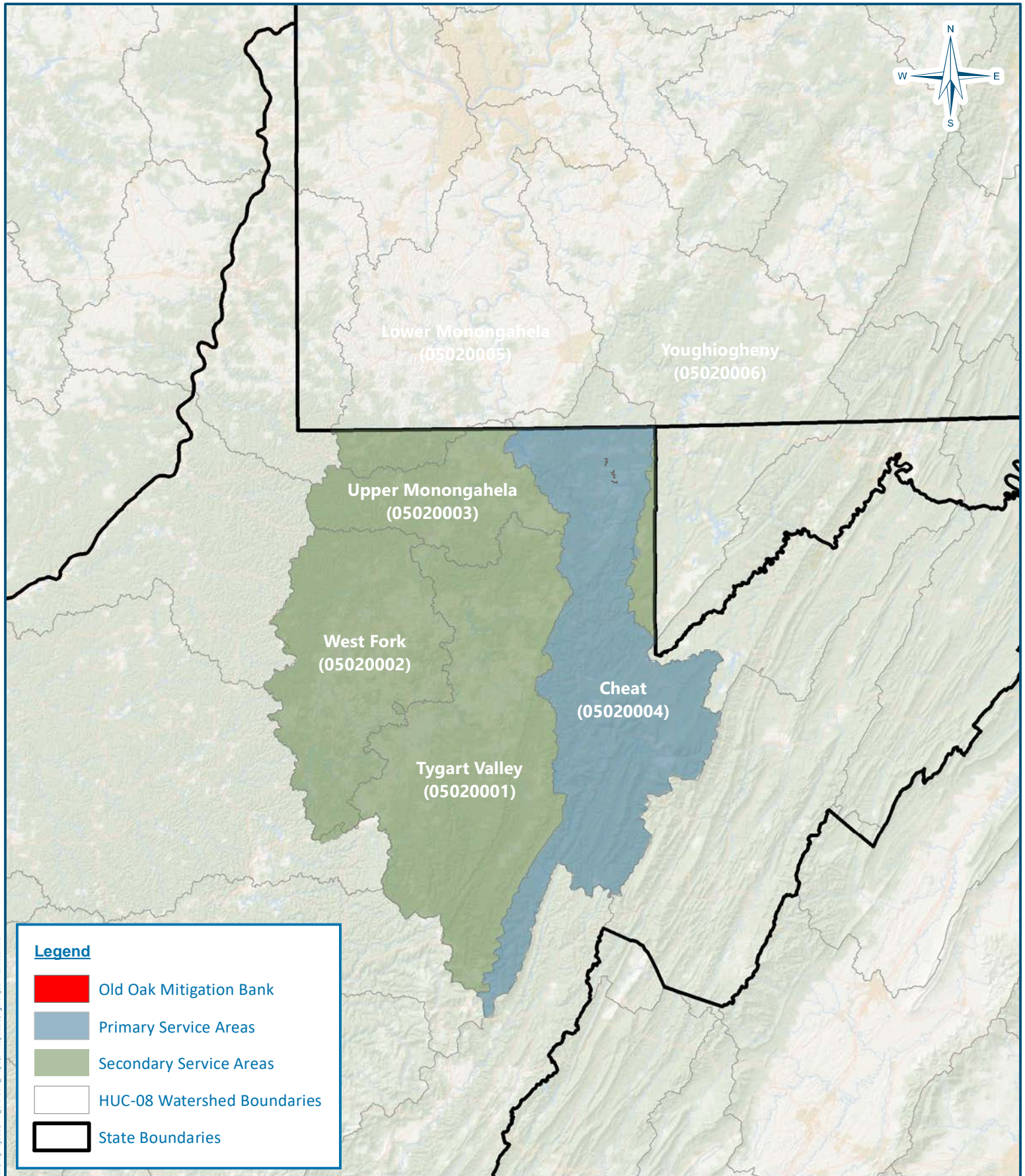
Old Oak Mitigation Bank
 Preston County, West Virginia



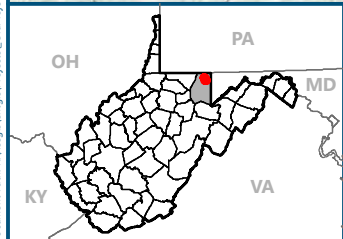
Figure 6
 Adjacent Mining & Oil and Gas Well Map

Date: 2/24/2022
 Drawn by: LC
 Checked by: JS





Document Path: E:\regis\mgs\Projects_Old Oak_Maps\2 Prospectus\Figure7_ServiceAreas.mxd



Old Oak Mitigation Bank

Preston County, West Virginia



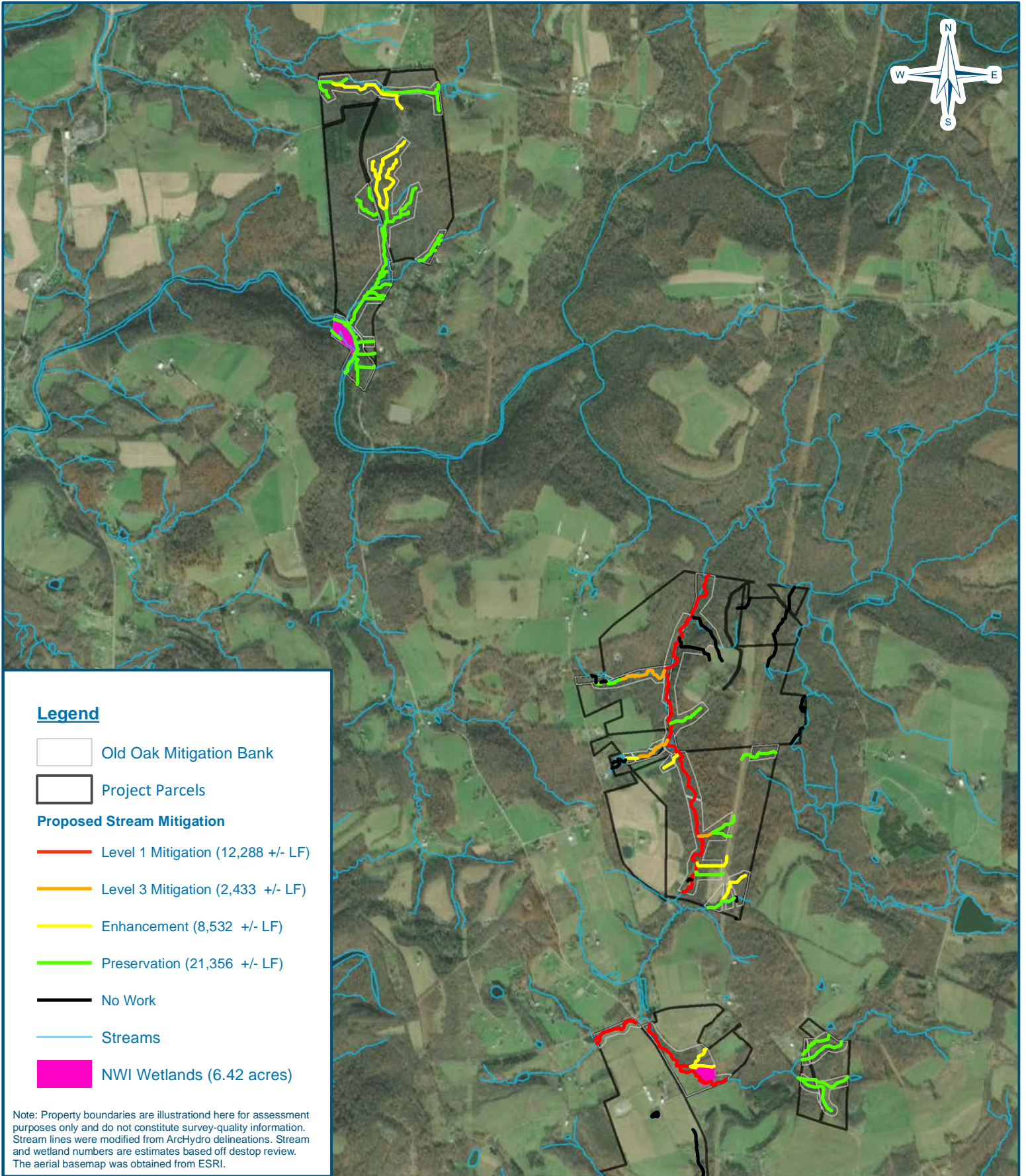
Figure 7
Service Area Map

Date: 2/23/2022










Drawn by: JAS

Checked by: KW

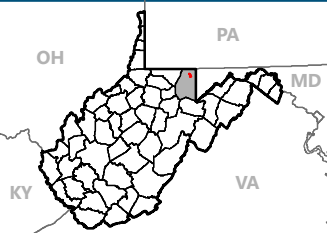




Legend

-  Old Oak Mitigation Bank
-  Project Parcels
- Proposed Stream Mitigation**
-  Level 1 Mitigation (12,288 +/- LF)
-  Level 3 Mitigation (2,433 +/- LF)
-  Enhancement (8,532 +/- LF)
-  Preservation (21,356 +/- LF)
-  No Work
-  Streams
-  NWI Wetlands (6.42 acres)

Note: Property boundaries are illustrated here for assessment purposes only and do not constitute survey-quality information. Stream lines were modified from ArcHydro delineations. Stream and wetland numbers are estimates based off desktop review. The aerial basemap was obtained from ESRI.



Old Oak Mitigation Bank
Preston County, West Virginia

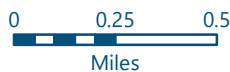


Figure 8
Preliminary Resource
Development Map

Date: 2/24/2022

Drawn by: JAS

Checked by: KW

