

Braddock USGS 7.5 Minute Quadrangle, Allegheny County, PA



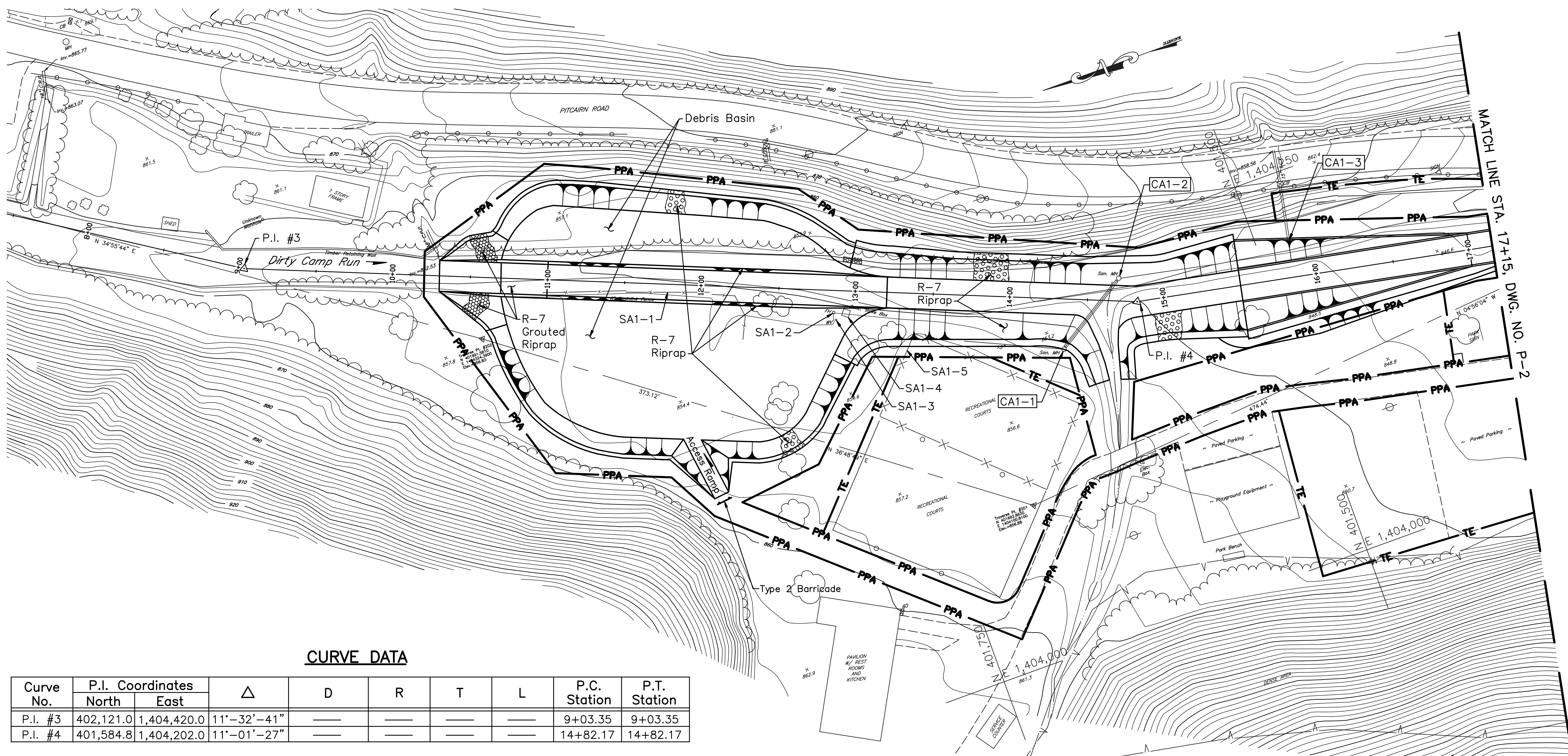
1:24,000











**LEGEND**

- PPA — PPA — Permanent Project Area
- TE — TE — Temporary Easement
- Existing R/W
- Guide Rail
- Fence
- Utility Pole
- Riprap
- Grouted Riprap
- Fill
- Top of Slope

**NOTES:**

1. For General Notes, see Dwg. No. GP-1.
2. For Concrete Notes, see Dwg. No. D-11.
3. For Structural Details of Concrete transition, Sta. 15+50.0 to Sta. 17+00.0, see Dwg. No. D-5.
4. For Structural Details, see Dwg. No. D-5.

**CURVE DATA**

Curve No.	P.I. Coordinates		Δ	D	R	T	L	P.C. Station	P.T. Station
	North	East							
P.I. #3	402,121.0	1,404,420.0	11°-32'-41"	—	—	—	—	9+03.35	9+03.35
P.I. #4	401,584.8	1,404,202.0	11°-01'-27"	—	—	—	—	14+82.17	14+82.17

**PLAN**

Scale: 1 in. = 40 ft.

**SPONSOR ADJUSTMENTS**

No.	Description	Location		Adjustment Required
		Station	Offset	
SA1-1	8' Chain Link Fence	11+00 to 12+23	10.0' Rt.	Remove
SA1-2	Fire Hydrant and Water Line	12+86	19.0' Rt.	Relocate outside Basin Area
SA1-3	Water Valve and Water Line	12+87.5	24.5' Rt.	Relocate outside Basin Area
SA1-4	Concrete Valve Box	12+94	17.0' Rt.	Relocate outside Basin Area
SA1-5	Fence	13+40	22.0' Rt.	Remove from within PPA

**CONTRACTOR ADJUSTMENTS**

No.	Description	Location		Adjustment Required
		Station	Offset	
CA1-1	Sanitary Sewer Manhole and 15" Pipe Encasement	14+36	32.0' Rt.	Protect, Do not disturb
CA1-2	Sanitary Sewer Manhole	14+69	14.0' Lt.	Protect, Do not disturb
CA1-3	Concrete Headwall and 15" Pipe	15+85	25.0' Lt.	Protect, Extend if necessary

**TRAVERSE DATA**

Traverse Point	Coordinates	
	North	East
#201	401,692.86	1,404,100.81
#202	401,001.58	1,404,324.39

NO.	DATE	REVISION	APPR.

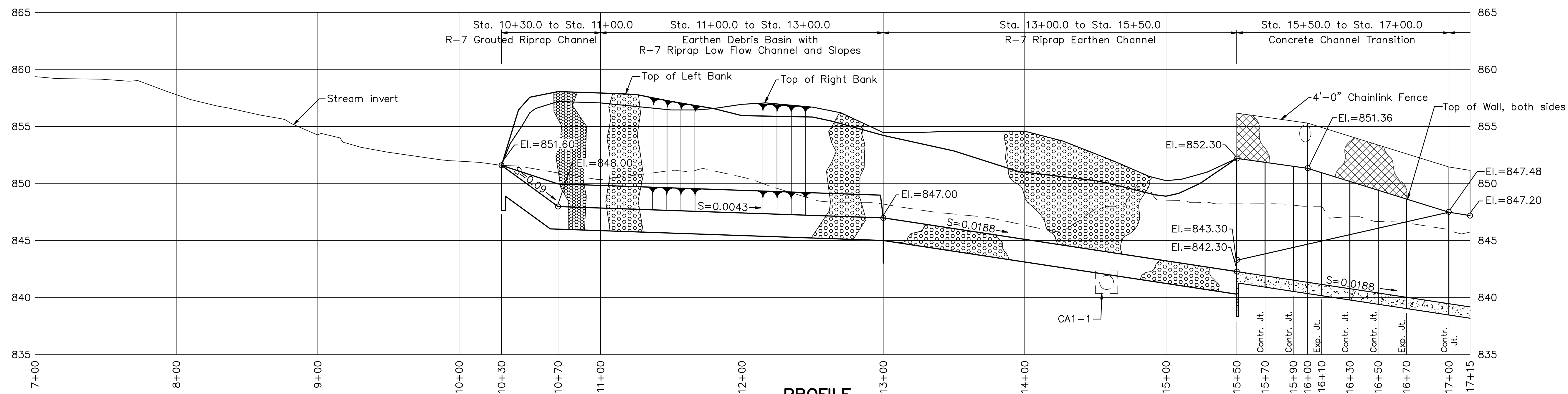
COMMONWEALTH OF PENNSYLVANIA  
 DEPARTMENT OF ENVIRONMENTAL PROTECTION  
 OFFICE OF WATER MANAGEMENT

COMMONWEALTH OF PENNSYLVANIA  
 DEPARTMENT OF GENERAL SERVICES  
 HARRISBURG, PENNSYLVANIA

PROJECT NO. D.G.S. 184-33

CONCRETE CHANNEL  
 PROTECTION SYSTEM  
 BOROUGH OF PITCAIRN  
 ALLEGHENY COUNTY, PENNSYLVANIA

**PLAN AND PROFILE**  
 BEGINNING OF PROJECT to STA. 17+15.0



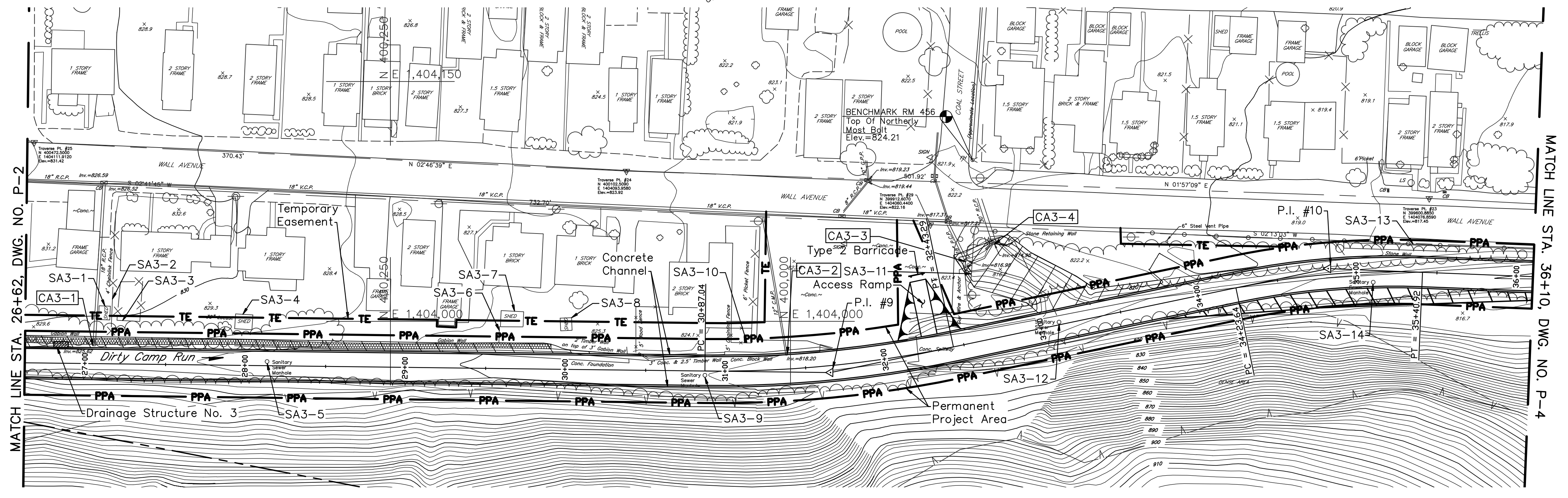
**PROFILE**

Scale: { Horiz. 1 in. = 40 ft.  
 Vert. 1 in. = 5 ft.

ALL DIMENSIONS AND EXISTING CONDITIONS SHALL BE CHECKED AND VERIFIED BY CONTRACTOR AT THE SITE.

DRAWN BY W.G.F.	DATE	DRAWING NO. P-1
CHECKED BY	SCALE As Shown	





**PLAN**  
Scale: 1 in. = 40 ft.

**BENCH MARK DATA**

BM No.	Elevation	Location
RM 456	824.21	Northerly most bolt on fire hydrant located at SE corner of intersection of Coal St. and Wall Ave.

**NOTES:**

- For General Notes, see Dwg. No. GP-1.
- For Concrete Notes, see Dwg. No. D-11.
- For Structural Details see Dwg. D-7.

**CURVE DATA**

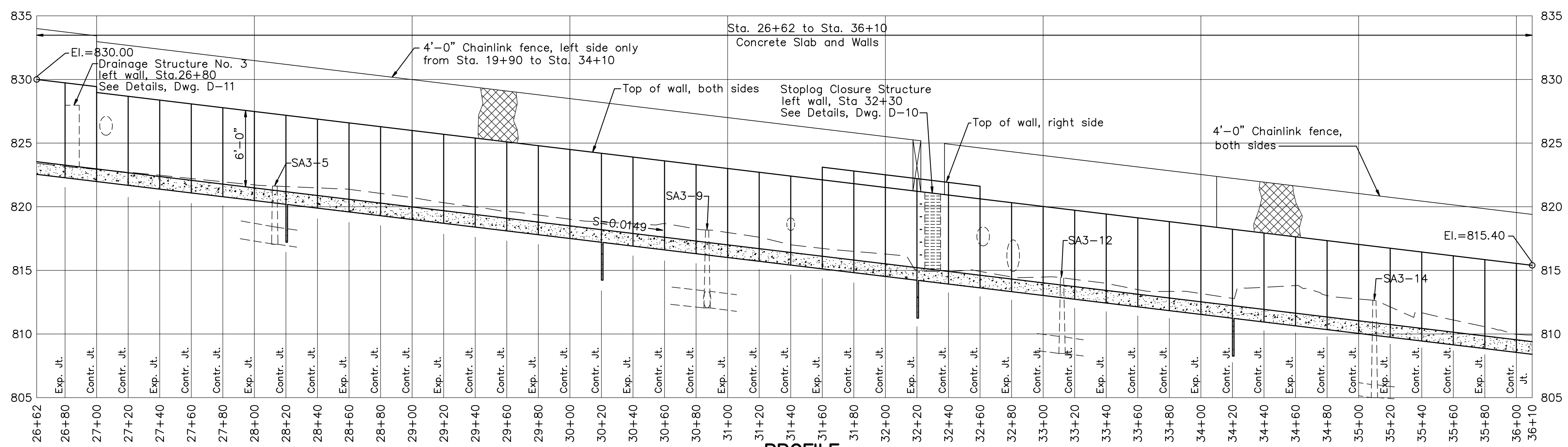
Curve No.	P.I. Coordinates		$\Delta$	D	R	T	L	P.C. Station	P.T. Station
	North	East							
P.I. #9	399,975.0	1,403,968.0	12'-29'-58"	8'-00'-00"	716.19'	78.43'	156.24'	30+87.04	32+43.29
P.I. #10	399,664.0	1,404,033.0	14'-04'-23"	12'-00'-00"	477.46'	58.94'	117.27'	34+23.64	35+40.92

**SPONSOR ADJUSTMENTS**

No.	Description	Location		Adjustment Required
		Station	Offset	
SA3-1	Shed	27+12	28.0' Lt.	Remove from TE during Construction
SA3-2	4'-0" Chain Link Fence	27+15	20.0' Lt.	Remove from TE during Construction
SA3-3	Fence	27+19 to 27+33	27.0' Lt.	Remove from TE during Construction
SA3-4	Shed	28+00	23.0' Lt.	Remove from TE during Construction
SA3-5	Sanitary Sewer Manhole	28+13	2.5' Lt.	Adjust Height, Install Watertight Manhole Lid
SA3-6	Fence	29+57	16.0' Lt.	Remove
SA3-7	Shed	29+65	27.0' Lt.	Move and Replace
SA3-8	Shed	30+00	25.0' Lt.	Move and Replace
SA3-9	Sanitary Sewer Manhole	30+87	2.0' Rt.	Adjust Height, Install Watertight Manhole Lid
SA3-10	5'-0" Chain Link Fence, 6'-0" Picket Fence	31+02 to 31+14	18.0' Lt.	Remove from TE during Construction
SA3-11	Guy Wire and Anchor	32+65	44.0' Lt.	Relocate
SA3-12	Sanitary Sewer Manhole	33+12	¢	Adjust Height, Install Watertight Manhole Lid
SA3-13	Guide Rail	34+55 to 36+26	18.0' Lt.	Remove and Replace
SA3-14	Sanitary Sewer Manhole	35+10	7.0' Rt.	Adjust Height, Install Watertight Manhole Lid

**CONTRACTOR ADJUSTMENTS**

No.	Description	Location		Adjustment Required
		Station	Offset	
CA3-1	18" R.C.P.	27+05	11.0' Lt.	Connect to Channel
CA3-2	12" C.M.P.	31+39	9.0' Lt.	Connect to Channel
CA3-3	18" P.C.P.	32+60	52.0' Lt.	Extend and Connect to Channel
CA3-4	30" R.C.P.	32+80	57.0' Lt.	Extend and Connect to Channel



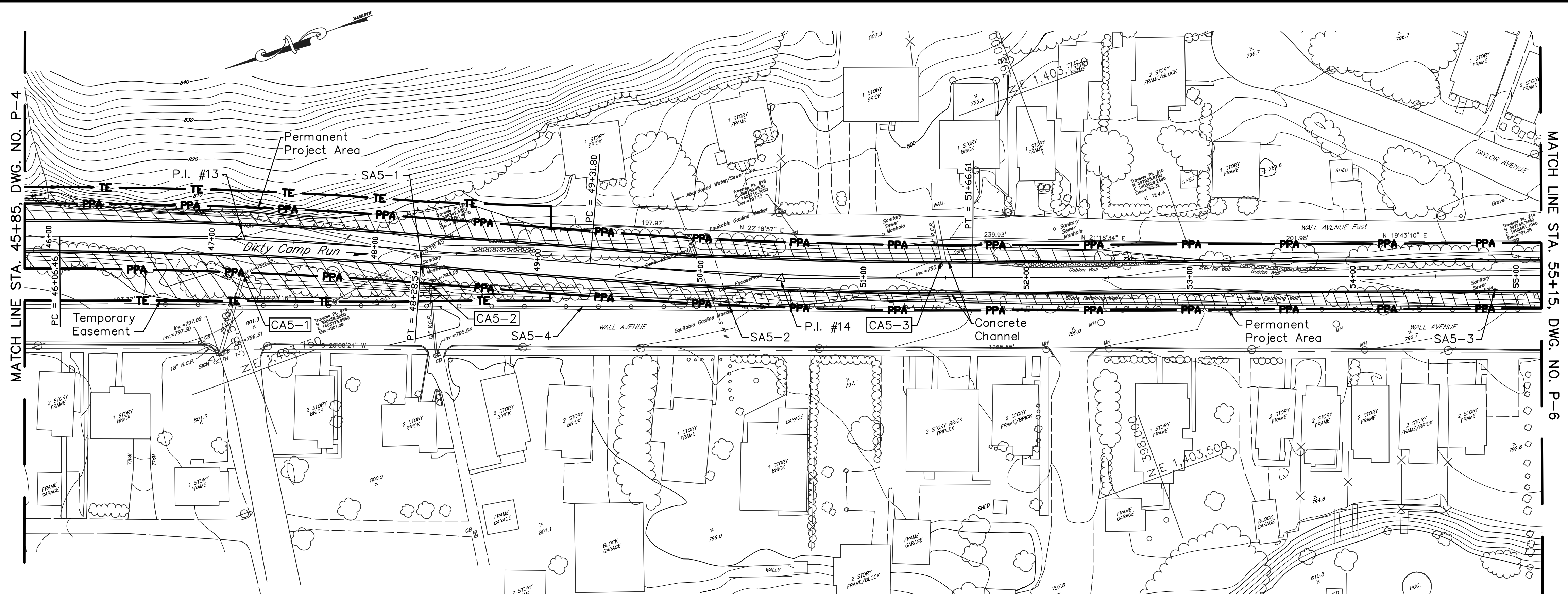
**PROFILE**  
Scale: { Horiz. 1 in. = 40 ft.  
Vert. 1 in. = 5 ft.

NO.	DATE	REVISION	APPR.
SUBMITTED			
PROJECT COORDINATOR - D.E.P.			
APPROVED			
CHIEF - DIVISION OF PROJECT DEVELOPMENT - D.E.P.			
APPROVED			
DIRECTOR - BUREAU OF WATERWAYS ENGINEERING - D.E.P.			
PROFESSIONAL'S SIGNATURE _____ DATE _____			
COMMONWEALTH OF PENNSYLVANIA DEPARTMENT OF ENVIRONMENTAL PROTECTION OFFICE OF WATER MANAGEMENT			
COMMONWEALTH OF PENNSYLVANIA DEPARTMENT OF GENERAL SERVICES HARRISBURG, PENNSYLVANIA			
PROJECT NO. D.G.S. 184-33			
CONCRETE CHANNEL PROTECTION SYSTEM BOROUGH OF PITCAIRN ALLEGHENY COUNTY, PENNSYLVANIA			
PLAN AND PROFILE STA. 26+62.0 to STA. 36+10.0			
DRAWN BY W.G.F.	DATE	DRAWING NO. P-3	
CHECKED BY	SCALE As Shown		

ALL DIMENSIONS AND EXISTING CONDITIONS SHALL BE CHECKED AND VERIFIED BY CONTRACTOR AT THE SITE.







**PLAN**

Scale: 1 in. = 40 ft.

**CURVE DATA**

Curve No.	P.I. Coordinates		Δ	D	R	T	L	P.C. Station	P.T. Station
	North	East							
P.I. #13	398,479.0	1,403,831.0	4°-26'-30"	2'-00'-00"	2,864.79'	111.09'	222.08'	46+06.46	48+28.54
P.I. #14	398,177.0	1,403,693.5	4°-41'-47"	2'-00'-00"	2,864.79'	117.47'	234.82'	49+31.80	51+66.61

**SPONSOR ADJUSTMENTS**

No.	Description	Location		Adjustment Required
		Station	Offset	
SA5-1	Sanitary Sewer Manhole	48+30	14.0' Rt.	Adjust Height, Install Watertight Lid
SA5-2	Gas Line	50+12	0'	Relocate
SA5-3	Sanitary Sewer Manhole	54+85	9.0' Rt.	Adjust Height, Install Watertight Lid
SA5-3	Guide Rail	47+50 to 55+85	20.0' Rt.	Remove and Replace

**CONTRACTOR ADJUSTMENTS**

No.	Description	Location		Adjustment Required
		Station	Offset	
CA5-1	24" R.C.P.	47+20	22.0' Rt.	Extend and Connect to Channel
CA5-2	12" V.C.P.	48+35	21.0' Rt.	Extend and Connect to Channel
CA5-3	36" R.C.P.	51+49	10.0' Lt.	Connect to Channel

**NOTES:**

1. For General Notes, see Dwg. No. GP-1.
2. For Concrete Notes, see Dwg. No. D-11.
3. For Structural Details see Dwg. D-7.

NO.	DATE	REVISION	APPR.
SUBMITTED			
PROJECT COORDINATOR - D.E.P.			
APPROVED			
CHIEF - DIVISION OF PROJECT DEVELOPMENT - D.E.P.			
APPROVED			
DIRECTOR - BUREAU OF WATERWAYS ENGINEERING - D.E.P.			

PROFESSIONAL'S SIGNATURE \_\_\_\_\_ DATE \_\_\_\_\_

COMMONWEALTH OF PENNSYLVANIA  
DEPARTMENT OF ENVIRONMENTAL PROTECTION  
OFFICE OF WATER MANAGEMENT

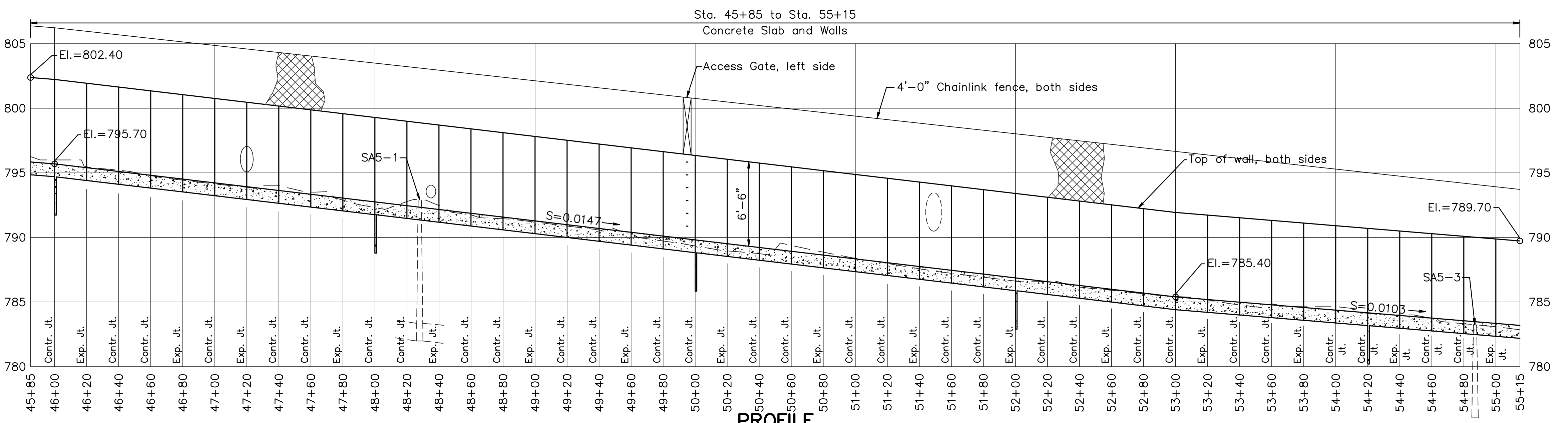
COMMONWEALTH OF PENNSYLVANIA  
DEPARTMENT OF GENERAL SERVICES  
HARRISBURG, PENNSYLVANIA

PROJECT NO. D.G.S. 184-33

CONCRETE CHANNEL  
PROTECTION SYSTEM  
BOROUGH OF PITCAIRN  
ALLEGHENY COUNTY, PENNSYLVANIA

**PLAN AND PROFILE**  
**STA. 45+85.0 to STA. 55+15.0**

DRAWN BY	DATE	DRAWING NO.
W.G.F.		P-5
CHECKED BY	SCALE	As Shown



**PROFILE**

Scale: Horiz. 1 in. = 40 ft.  
Vert. 1 in. = 5 ft.

ALL DIMENSIONS AND EXISTING  
CONDITIONS SHALL BE CHECKED  
AND VERIFIED BY CONTRACTOR  
AT THE SITE.



**CURVE DATA**

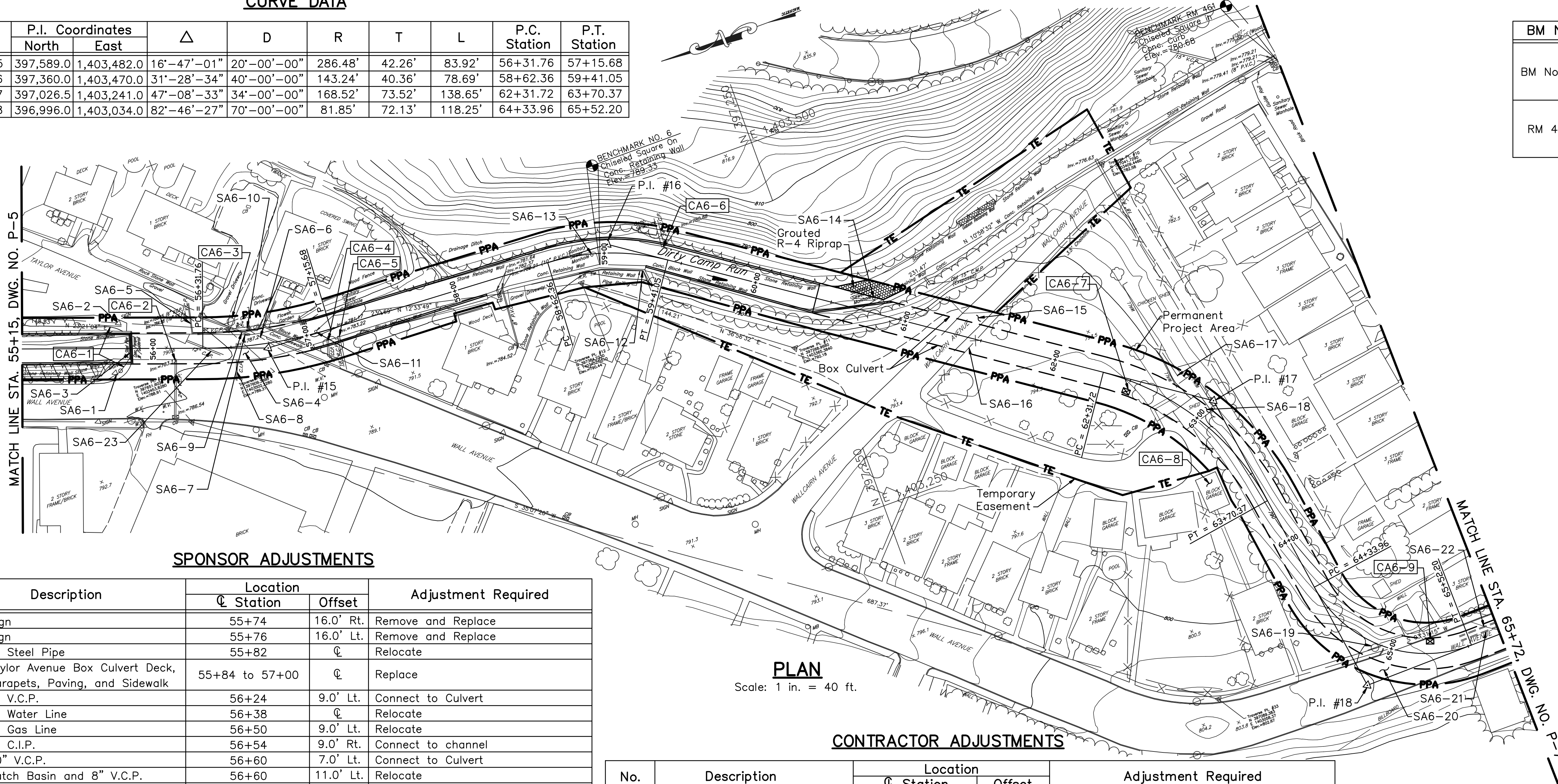
Curve No.	P.I. Coordinates		Δ	D	R	T	L	P.C. Station	P.T. Station
	North	East							
P.I. #15	397,589.0	1,403,482.0	16°-47'-01"	20'-00'-00"	286.48'	42.26'	83.92'	56+31.76	57+15.68
P.I. #16	397,360.0	1,403,470.0	31°-28'-34"	40'-00'-00"	143.24'	40.36'	78.69'	58+62.36	59+41.05
P.I. #17	397,026.5	1,403,241.0	47°-08'-33"	34'-00'-00"	168.52'	73.52'	138.65'	62+31.72	63+70.37
P.I. #18	396,996.0	1,403,034.0	82°-46'-27"	70'-00'-00"	81.85'	72.13'	118.25'	64+33.96	65+52.20

**BENCH MARK DATA**

BM No.	Elevation	Location
BM No. 6	789.33	Chiselled square on top of retaining wall behind House Number 721 along Wall Avenue.
RM 461	780.68	Chiselled square in concrete curb at intersection of Wallcain Avenue and Robinson Street.

**NOTES:**

- For General Notes, see Dwg. No. GP-1.
- For Concrete Notes, see Dwg. No. D-11.
- For Precast Concrete Box Culvert Notes, see Dwg. D-3.
- For Structural Details see Dwg. D-8.
- For Structural Details of Wall Ave. Box Culvert at Sta. 55+85.0, see Dwg. D-2.



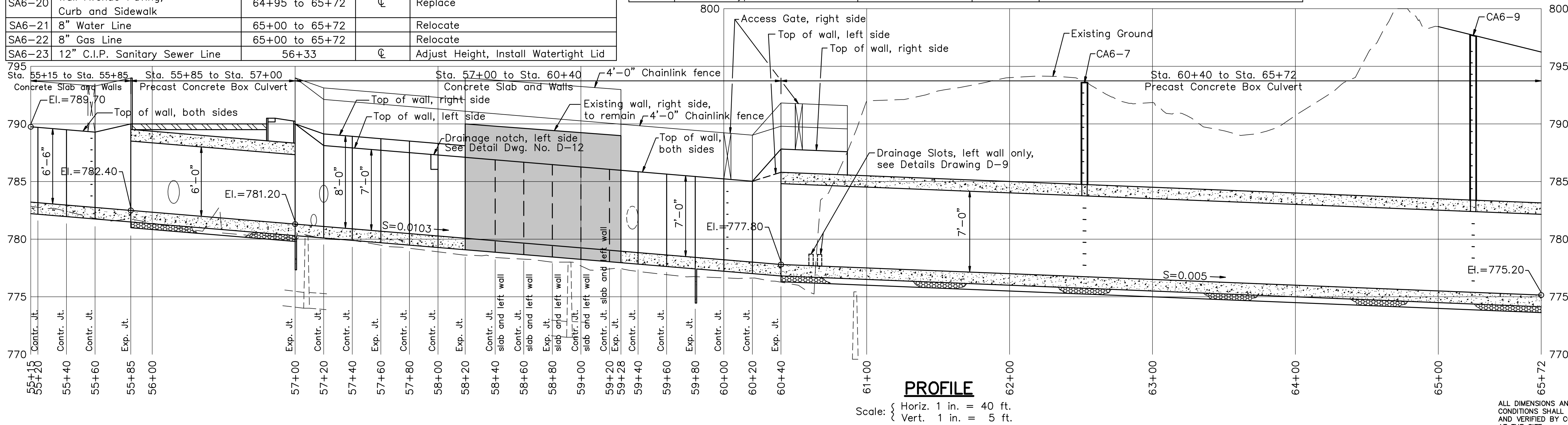
**PLAN**  
Scale: 1 in. = 40 ft.

**SPONSOR ADJUSTMENTS**

No.	Description	Location		Adjustment Required
		Station	Offset	
SA6-1	Sign	55+74	16.0' Rt.	Remove and Replace
SA6-2	Sign	55+76	16.0' Lt.	Remove and Replace
SA6-3	4" Steel Pipe	55+82	℄	Relocate
SA6-4	Taylor Avenue Box Culvert Deck, Parapets, Paving, and Sidewalk	55+84 to 57+00	℄	Replace
SA6-5	8" V.C.P.	56+24	9.0' Lt.	Connect to Culvert
SA6-6	6" Water Line	56+38	℄	Relocate
SA6-7	3" Gas Line	56+50	9.0' Lt.	Relocate
SA6-8	8" C.I.P.	56+54	9.0' Rt.	Connect to channel
SA6-9	10" V.C.P.	56+60	7.0' Lt.	Connect to Culvert
SA6-10	Catch Basin and 8" V.C.P.	56+60	11.0' Lt.	Relocate
SA6-11	Sanitary Sewer Manhole	57+06	1.0' Lt.	Adjust Height, Install Watertight Lid
SA6-12	Pipe Railing	58+60 to 59+08	12.0' Rt.	Remove
SA6-13	Sanitary Sewer Manhole	58+90	℄	Adjust Height, Install Watertight Lid
SA6-14	Sanitary Sewer Manhole	60+75	9.0' Lt.	Adjust Height, Install Watertight Lid
SA6-15	Wallcain Avenue	61+32	℄	Resurface
SA6-16	3.5' Chain Link Fence	61+46	℄	Remove and Replace
SA6-17	3.5' Chain Link Fence	62+79	10.0' Lt.	Remove
SA6-18	Shed	62+94	℄	Remove
SA6-19	Utility Pole	64+88	3.0' Rt.	Relocate
SA6-20	Wall Avenue Paving, Curb and Sidewalk	64+95 to 65+72	℄	Replace
SA6-21	8" Water Line	65+00 to 65+72	℄	Relocate
SA6-22	8" Gas Line	65+00 to 65+72	℄	Relocate
SA6-23	12" C.I.P. Sanitary Sewer Line	56+33	℄	Adjust Height, Install Watertight Lid

**CONTRACTOR ADJUSTMENTS**

No.	Description	Location		Adjustment Required
		Station	Offset	
CA6-1	Guide Rail	55+80	15.0' Lt., Rt.	Remove and Reinstall, as necessary
CA6-2	24" V.C.P.	56+14	7.0' Rt.	Connect to Culvert
CA6-3	Utility Pole	56+51	16.0' Lt.	Protect, Do not disturb
CA6-4	12" C.C.P.	57+12	7.0' Rt.	Connect to Channel
CA6-5	18" R.C.P.	57+20	7.0' Rt.	Connect to Channel
CA6-6	24" R.C.P.	59+36	8.0' Lt.	Connect to Channel
CA6-7	PennDOT Type "M" Inlet	62+50	9.0' Rt.	Install Inlet, Connect to Culvert with Inlet Box
CA6-8	Block Garage	63+50	21.0' Rt.	Protect, Do not disturb
CA6-9	PennDOT Type "M" Inlet	65+22	9.0' Lt.	Install Inlet, Connect to Culvert with Inlet Box



**PROFILE**

Scale: { Horiz. 1 in. = 40 ft.  
Vert. 1 in. = 5 ft.

NO.	DATE	REVISION	APPR.
SUBMITTED			
PROJECT COORDINATOR - D.E.P.			
APPROVED			
CHIEF - DIVISION OF PROJECT DEVELOPMENT - D.E.P.			
APPROVED			
DIRECTOR - BUREAU OF WATERWAYS ENGINEERING - D.E.P.			
PROFESSIONAL'S SIGNATURE _____ DATE _____			
COMMONWEALTH OF PENNSYLVANIA DEPARTMENT OF ENVIRONMENTAL PROTECTION OFFICE OF WATER MANAGEMENT			
COMMONWEALTH OF PENNSYLVANIA DEPARTMENT OF GENERAL SERVICES HARRISBURG, PENNSYLVANIA			
PROJECT NO. D.G.S. 184-33			
CONCRETE CHANNEL PROTECTION SYSTEM BOROUGH OF PITCAIRN ALLEGHENY COUNTY, PENNSYLVANIA			
PLAN AND PROFILE STA. 55+15.0 to STA. 65+72.0			
DRAWN BY	DATE	DRAWING NO.	P-6
W.G.F.			
CHECKED BY	SCALE	As Shown	

ALL DIMENSIONS AND EXISTING CONDITIONS SHALL BE CHECKED AND VERIFIED BY CONTRACTOR AT THE SITE.



**SPONSOR ADJUSTMENTS**

No.	Description	Location		Adjustment Required
		Station	Offset	
SA7-1	Wall Avenue Paving, Curb and Sidewalk	65+72 to 74+60	0	Replace
SA7-2	Sanitary Sewer Line and Manhole	66+41	6.0' Rt.	Relocate
SA7-3	Sanitary Sewer Line and Manhole	67+36	10.0' Rt.	Relocate
SA7-4	Sanitary Sewer Line and Manhole	68+12	9.0' Rt.	Relocate
SA7-5	Sanitary Sewer Line and Manhole	68+15	3.0' Rt.	Relocate
SA7-6	Sanitary Sewer Line and Manhole	68+97	5.0' Rt.	Relocate
SA7-7	Utility Pole	69+17	11.0' Lt.	Relocate
SA7-8	Sanitary Sewer Line and Manhole	70+07	0	Relocate
SA7-9	Utility Pole	70+21	12.0' Lt.	Relocate, if necessary
SA7-10	Sign	70+31	13.0' Lt.	Remove and Replace, if necessary
SA7-11	Utility Pole	71+06	13.0' Lt.	Relocate, if necessary
SA7-12	Sanitary Sewer Line and Manhole	71+34	0	Relocate
SA7-13	Sign	71+50	13.0' Lt.	Remove and Replace, if necessary
SA7-14	Sanitary Sewer Line and Manhole	72+30	1.0' Rt.	Relocate
SA7-15	Utility Pole	72+34	12.0' Lt.	Relocate, if necessary
SA7-16	Utility Pole	73+40	13.0' Lt.	Relocate, if necessary
SA7-17	Sanitary Sewer Line and Manhole	73+65	0	Relocate
SA7-18	Sign	73+87	13.0' Lt.	Relocate, if necessary
SA7-19	Sign	73+92	13.0' Lt.	Relocate, if necessary
SA7-20	Sanitary Sewer Line and Manhole	73+93	3.0' Rt.	Relocate
SA7-21	8" Water Line	65+72 to 74+60	0	Relocate
SA7-22	8" Gas Line	65+72 to 74+60	0	Relocate

**CONTRACTOR ADJUSTMENTS**

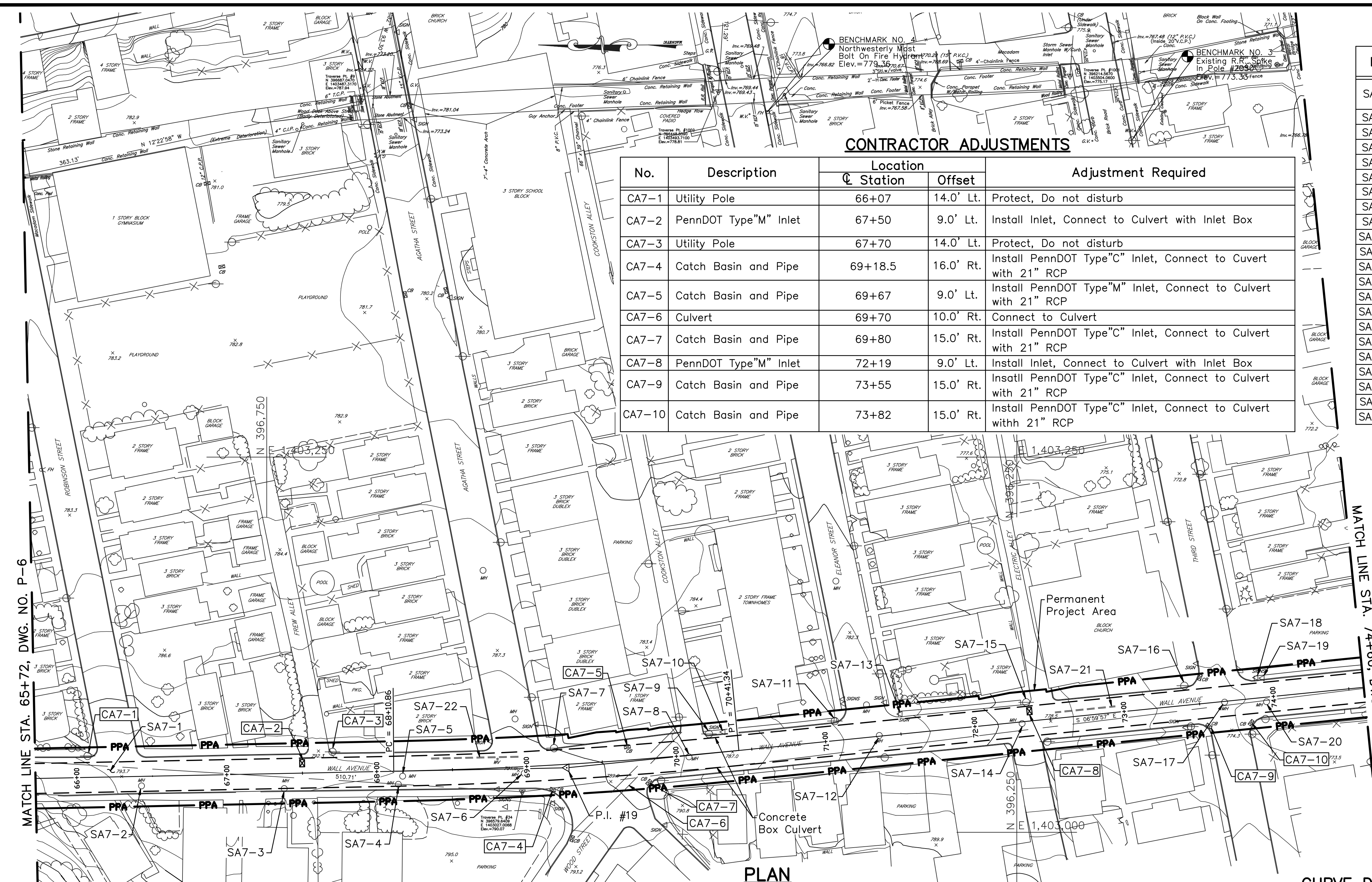
No.	Description	Location		Adjustment Required
		Station	Offset	
CA7-1	Utility Pole	66+07	14.0' Lt.	Protect, Do not disturb
CA7-2	PennDOT Type "M" Inlet	67+50	9.0' Lt.	Install Inlet, Connect to Culvert with Inlet Box
CA7-3	Utility Pole	67+70	14.0' Lt.	Protect, Do not disturb
CA7-4	Catch Basin and Pipe	69+18.5	16.0' Rt.	Install PennDOT Type "C" Inlet, Connect to Culvert with 21" RCP
CA7-5	Catch Basin and Pipe	69+67	9.0' Lt.	Install PennDOT Type "M" Inlet, Connect to Culvert with 21" RCP
CA7-6	Culvert	69+70	10.0' Rt.	Connect to Culvert
CA7-7	Catch Basin and Pipe	69+80	15.0' Rt.	Install PennDOT Type "C" Inlet, Connect to Culvert with 21" RCP
CA7-8	PennDOT Type "M" Inlet	72+19	9.0' Lt.	Install Inlet, Connect to Culvert with Inlet Box
CA7-9	Catch Basin and Pipe	73+55	15.0' Rt.	Install PennDOT Type "C" Inlet, Connect to Culvert with 21" RCP
CA7-10	Catch Basin and Pipe	73+82	15.0' Rt.	Install PennDOT Type "C" Inlet, Connect to Culvert with 21" RCP

**BENCH MARK DATA**

BM No.	Elevation	Location
BM No. 3	773.33	R.R. Spike in "BT Company of PA" Pole Number 2050 along Third Street.
BM No. 4	779.36	Northwesterly most bolt on fire hydrant along Eleanor Street at Dirty Camp Run.

**NOTES:**

- For General Notes, see Dwg. No. GP-1.
- For Concrete Notes, see Dwg. No. D-11.
- For Precast Concrete Box Culvert Notes, see Dwg. D-3.

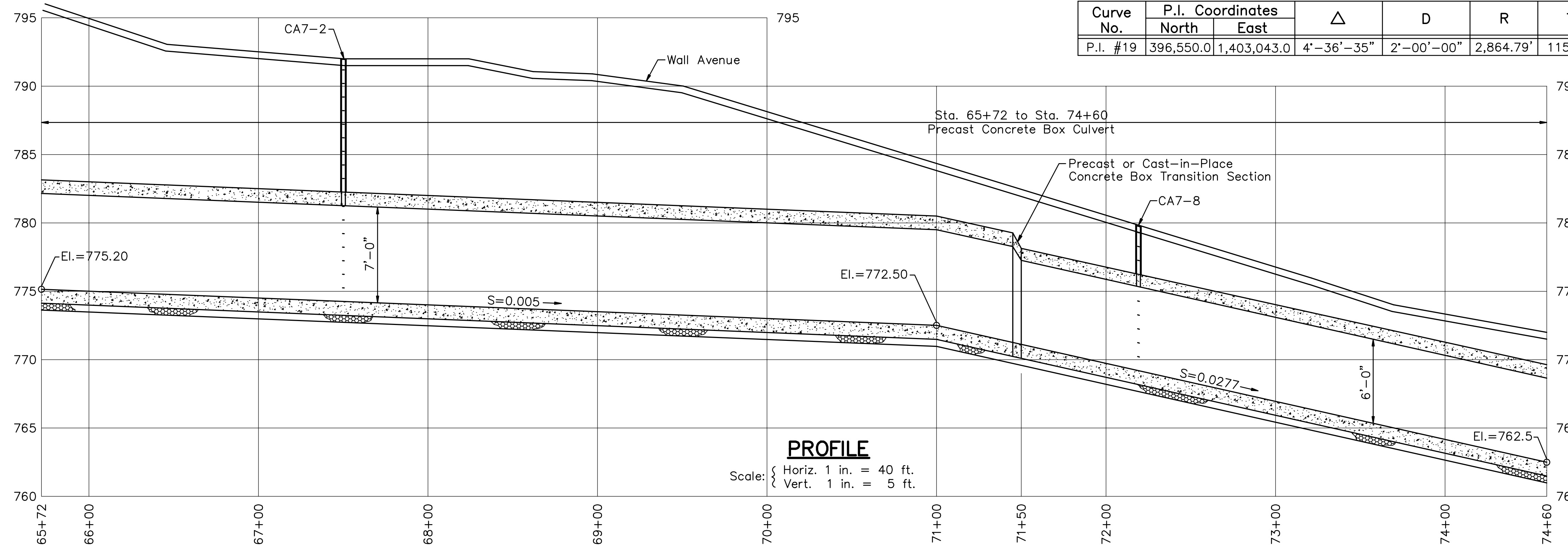


**PLAN**

Scale: 1 in. = 40 ft.

**CURVE DATA**

Curve No.	P.I. Coordinates		Δ	D	R	T	L	P.C. Station	P.T. Station
	North	East							
P.I. #19	396,550.0	1,403,043.0	4°-36'-35"	2'-00'-00"	2,864.79'	115.31'	230.48'	68+10.86	70+41.34



**PROFILE**

Scale: { Horiz. 1 in. = 40 ft.  
Vert. 1 in. = 5 ft.

NO.	DATE	REVISION	APPR.

SUBMITTED \_\_\_\_\_  
PROJECT COORDINATOR - D.E.P.

APPROVED \_\_\_\_\_  
CHIEF - DIVISION OF PROJECT DEVELOPMENT - D.E.P.

APPROVED \_\_\_\_\_  
DIRECTOR - BUREAU OF WATERWAYS ENGINEERING - D.E.P.

---

PROFESSIONAL'S SIGNATURE \_\_\_\_\_ DATE \_\_\_\_\_

COMMONWEALTH OF PENNSYLVANIA  
DEPARTMENT OF ENVIRONMENTAL PROTECTION  
OFFICE OF WATER MANAGEMENT

COMMONWEALTH OF PENNSYLVANIA  
DEPARTMENT OF GENERAL SERVICES  
HARRISBURG, PENNSYLVANIA

PROJECT NO. D.G.S. 184-33

CONCRETE CHANNEL  
PROTECTION SYSTEM  
BOROUGH OF PITCAIRN  
ALLEGHENY COUNTY, PENNSYLVANIA

**PLAN AND PROFILE  
STA. 65+72.0 to STA. 74+60.0**

DRAWN BY W.G.F.	DATE	DRAWING NO. P-7
CHECKED BY	SCALE As Shown	

ALL DIMENSIONS AND EXISTING CONDITIONS SHALL BE CHECKED AND VERIFIED BY CONTRACTOR AT THE SITE.

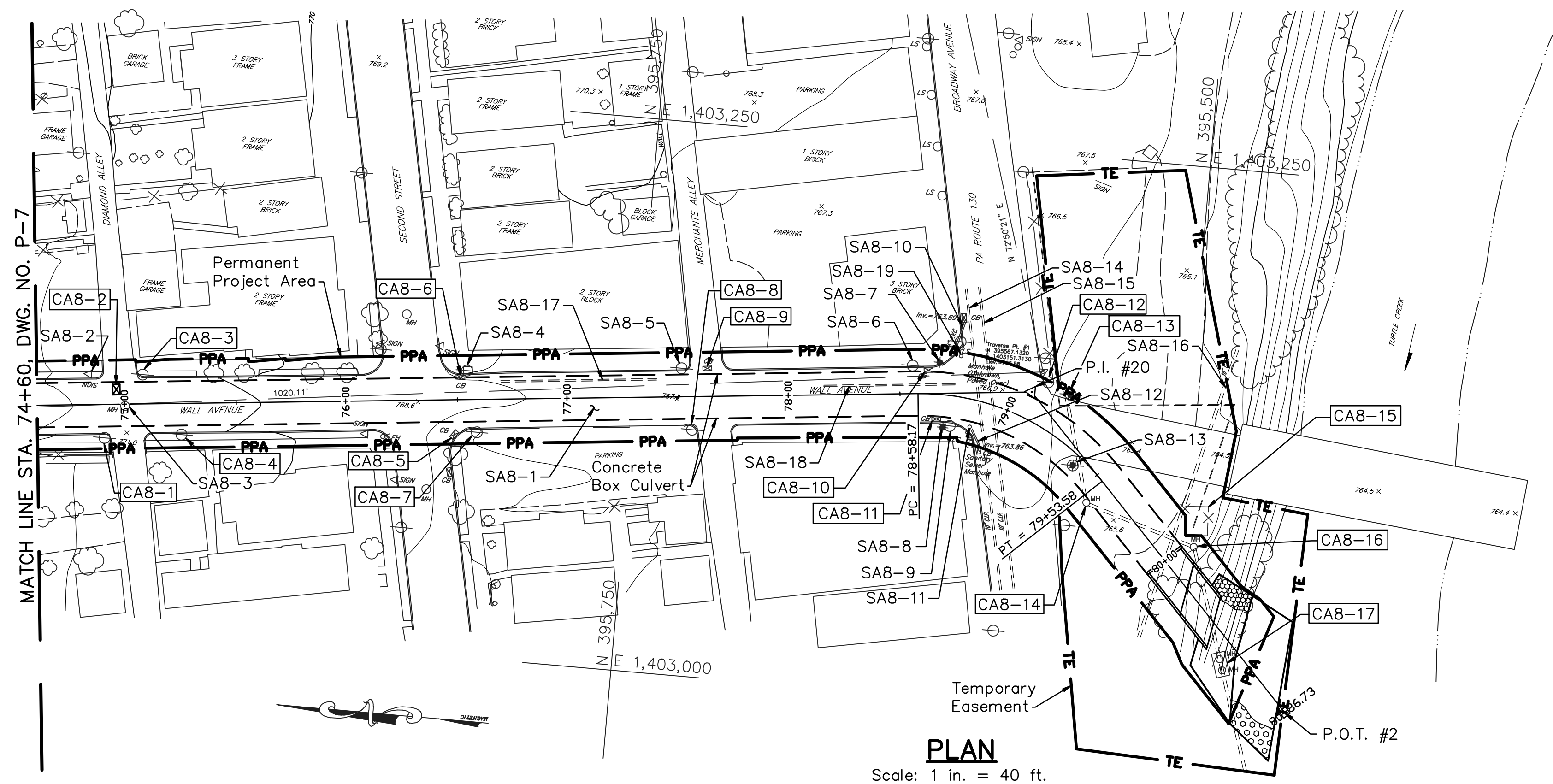


**CURVE DATA**

Curve No.	P.I. Coordinates		Δ	D	R	T	L	P.C. Station	P.T. Station
	North	East							
P.I. #20	395,571.5	1,403,141.8	52°-28'-44"	55'-00'-00"	104.17'	51.35'	95.42'	78+58.17	79+53.58
P.O.T. #2	395,445.0	1,403,007.5							

**BENCH MARK DATA**

BM No.	Elevation	Location
BM No. 1	769.13	R.R. Spike in pole at the SW corner of the existing Broadway Ave. culvert over Dirty Camp Run.



**SPONSOR ADJUSTMENTS**

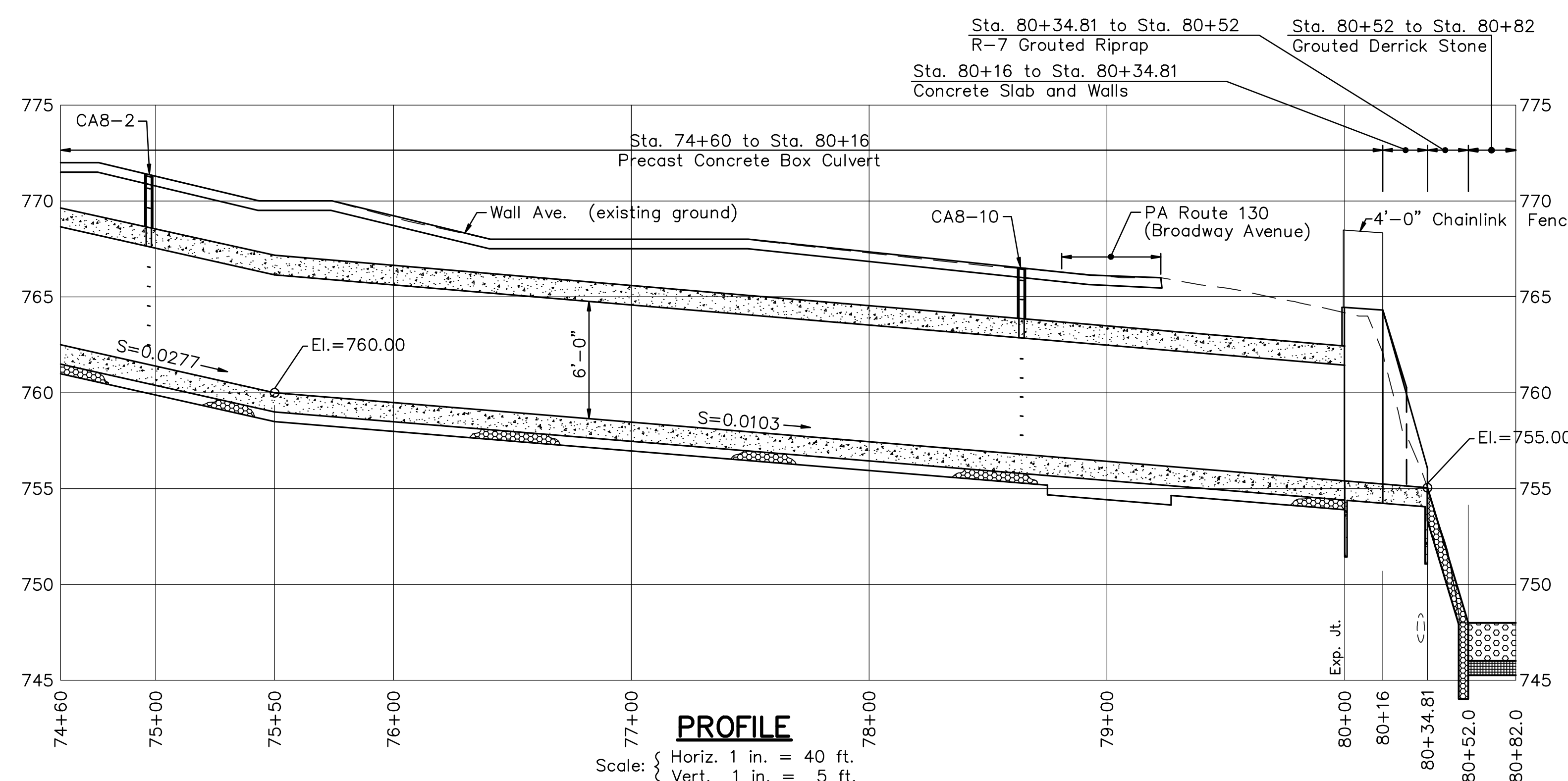
No.	Description	Location		Adjustment Required
		Station	Offset	
SA8-1	Wall Avenue Paving, Curbs and Sidewalk	74+60 to 78+72	℄	Replace
SA8-2	Sign	74+82	14.0' Lt.	Relocate, if necessary
SA8-3	Sanitary Sewer Line and Manhole	74+99	℄	Relocate to outside of Channel Wall
SA8-4	Utility Pole	76+54	18.0' Lt.	Relocate, if necessary
SA8-5	Utility Pole	77+50	13.0' Lt.	Relocate, if necessary
SA8-6	Utility Pole	78+55	12.0' Lt.	Relocate, if necessary
SA8-7	Light Pole	78+66	19.0' Lt.	Relocate, if necessary
SA8-8	Light Pole	78+70	15.0' Rt.	Relocate, if necessary
SA8-9	Utility Pole	78+72	13.0' Rt.	Relocate, if necessary
SA8-10	6" P.V.C.	78+72	20.0' Lt.	Connect to Culvert
SA8-11	Sanitary Sewer Line and Manhole	78+83	12.0' Rt.	Relocate, if necessary to outside of Channel Wall
SA8-12	8" V.C.P.	78+86	14.0' Rt.	Connect to Culvert
SA8-13	Utility Pole	79+38	5.0' Rt.	Relocate during construction, then reinstall
SA8-14	10" Water Line	78+85	℄	Relocate
SA8-15	10" Water Line	78+92	℄	Relocate
SA8-16	16" Water Line	80+15	℄	Relocate
SA8-17	8" Gas Line	74+60 to 78+85	Lt.	Relocate
SA8-18	8" Water Line	74+60 to 78+85	Lt.	Relocate
SA8-19	Sanitary Sewer Line and Manhole	78+74	19.0' Lt.	Relocate, if necessary to outside of Channel Wall

**CONTRACTOR ADJUSTMENTS**

No.	Description	Location		Adjustment Required
		Station	Offset	
CA8-1	Utility Pole	74+90	15.0' Rt.	Protect, Do not disturb
CA8-2	PennDOT Type "M" Inlet	74+97	9.0' Lt.	Install Inlet, Connect to Culvert with Inlet Box
CA8-3	Utility Pole	75+08	14.0' Lt.	Protect, Do not disturb
CA8-4	Utility Pole	75+25	14.0' Rt.	Protect, Do not disturb
CA8-5	Catch Basin and Pipe	76+46	15.0' Rt.	Install PennDOT Type "C" Inlet, Connect to culvert with 21" RCP
CA8-6	Catch Basin and Pipe	76+48	15.0' Lt.	Install PennDOT Type "C" Inlet, Connect to Culvert with 21" RCP
CA8-7	Utility Pole	76+58	15.0' Rt.	Protect, Do not disturb
CA8-8	Utility Pole	77+55	15.0' Rt.	Protect, Do not disturb
CA8-9	Catch Basin and Pipe	77+62	11.0' Lt.	Install PennDOT Type "C" Inlet, Connect to Culvert With 21" RCP
CA8-10	Catch Basin	78+64	10.0' Lt.	Install PennDOT Type "M" Inlet, Connect to Culvert With Inlet Box
CA8-11	Catch Basin and Pipe	78+70	11.0' Rt.	Install PennDOT Type "C" Inlet, Connect To Culvert With 21" RCP
CA8-12	Utility Pole	79+11	19.0' Lt.	Protect, Do not disturb
CA8-13	Utility Pole	79+20	20.0' Lt.	Protect, Do not disturb
CA8-14	Sanitary Sewer Manhole	79+57	11.0' Rt.	Protect, Do not disturb
CA8-15	Fence and Gas Valves	79+97	14.0' Lt.	Protect, Do not disturb
CA8-16	Sanitary Sewer Manhole	80+02	14.0' Lt.	Protect, Do not disturb
CA8-17	Sanitary Sewer Manhole	80+50	7.0' Rt.	Lower to meet existing ground. Replace watertight lids.

**NOTES:**

- For General Notes, see Dwg. No. GP-1.
- For Concrete Notes, see Dwg. No. D-11.
- For Precast Concrete Box Culvert Notes, see Dwg. D-3.
- For Structural details of Broadway Ave., see Dwg. D-3.
- For Structural details of Culvert Outlet, see Dwg. D-4.



NO.	DATE	REVISION	APPR.
SUBMITTED			
PROJECT COORDINATOR - D.E.P.			
APPROVED			
CHIEF - DIVISION OF PROJECT DEVELOPMENT - D.E.P.			
APPROVED			
DIRECTOR - BUREAU OF WATERWAYS ENGINEERING - D.E.P.			
PROFESSIONAL'S SIGNATURE _____ DATE _____			
COMMONWEALTH OF PENNSYLVANIA DEPARTMENT OF ENVIRONMENTAL PROTECTION OFFICE OF WATER MANAGEMENT			
COMMONWEALTH OF PENNSYLVANIA DEPARTMENT OF GENERAL SERVICES HARRISBURG, PENNSYLVANIA			
PROJECT NO. D.G.S. 184-33			
CONCRETE CHANNEL PROTECTION SYSTEM			
BOROUGH OF PITCAIRN ALLEGHENY COUNTY, PENNSYLVANIA			
PLAN AND PROFILE STA. 74+60.0 to END OF PROJECT			
DRAWN BY	DATE	DRAWING NO.	
W.G.F.			
CHECKED BY	SCALE		
	As Shown		

ALL DIMENSIONS AND EXISTING CONDITIONS SHALL BE CHECKED AND VERIFIED BY CONTRACTOR AT THE SITE.