

EXISTING LEGEND

- CONTOUR (1-ft)
- CONTOUR (5-ft)
- CURB
- FENCELINE W/ POST GUIDERAIL
- GUIDERAIL
- LIGHT STANDARD
- MANHOLES: SANITARY, STORM, TELEPHONE, MISC
- PAVEMENT EDGE
- PROPERTY LINE (Parcel)
- PROPERTY LINE (ROW)
- SIGN
- EDGE OF WATER
- CONIFEROUS TREE
- DECIDUOUS TREE
- UTILITY LINE (Electric)
- UTILITY LINE (Underground Telephone)
- UTILITY LINE (Gas)
- W/ BOX, METER, MARKER, AND VALVE
- UTILITY LINE (Sanitary Sewer)
- W/ MANHOLES
- UTILITY LINE (Storm)
- W/ CATCH BASIN AND MANHOLE
- UTILITY LINE (Telephone) W/ POLE, OVERHEAD WIRE AND GUY WIRE
- UTILITY LINE (Water)
- W/ BOX, METER, HYDRANT AND VALVE

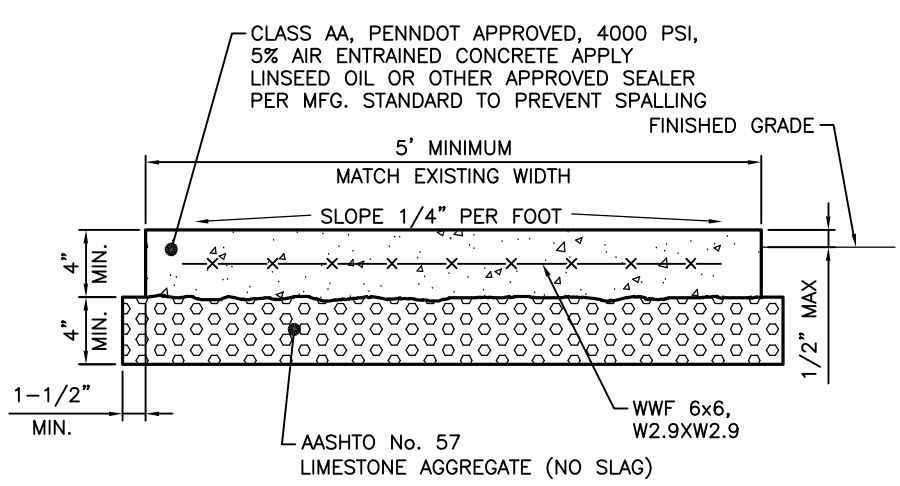
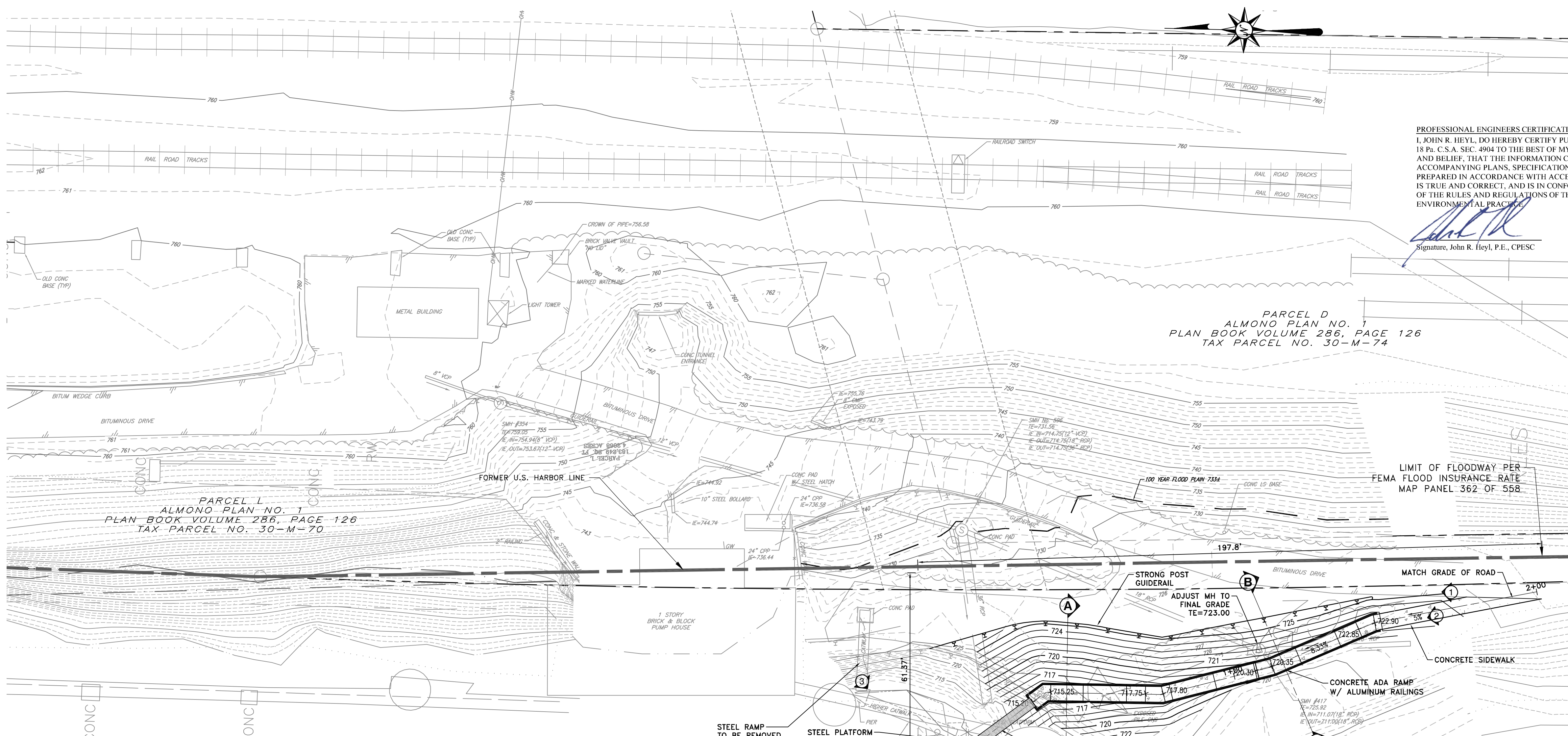
PROPOSED LEGEND

- CONTOUR (10-ft)
- CONTOUR (2-ft)
- GUIDE RAIL
- CONCRETE WALK
- RELOCATED STEEL GANGWAY
- PHOTO LOCATION

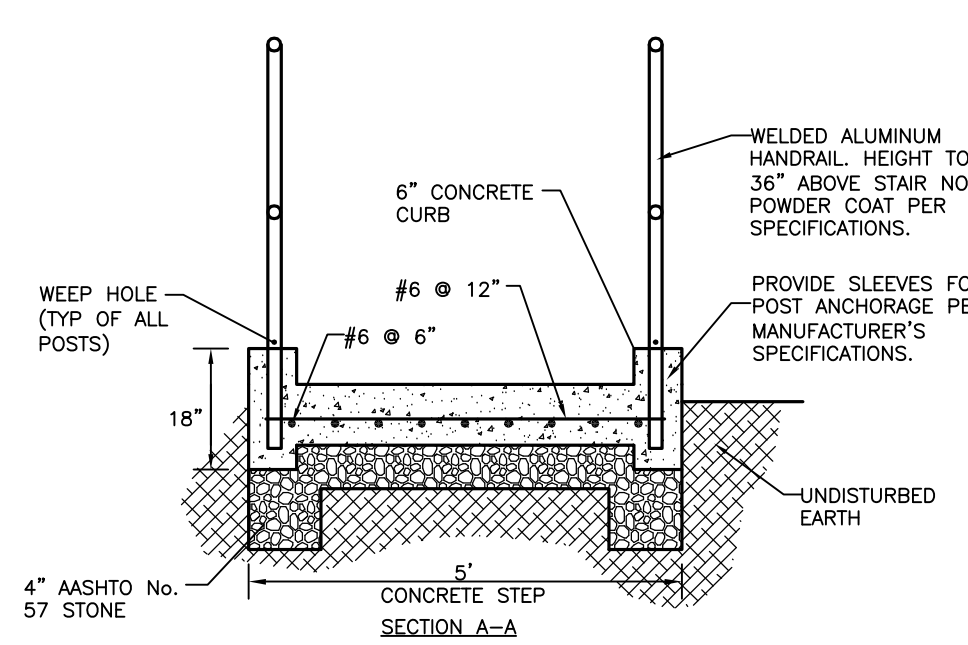
PROFESSIONAL ENGINEERS CERTIFICATION
 I, JOHN R. HEYL, DO HEREBY CERTIFY PURSUANT TO THE PENALTIES OF 18 Pa. C.S.A. SEC. 4904 TO THE BEST OF MY KNOWLEDGE, INFORMATION, AND BELIEF, THAT THE INFORMATION CONTAINED IN THE ACCOMPANYING PLANS, SPECIFICATIONS, AND REPORTS HAS BEEN PREPARED IN ACCORDANCE WITH ACCEPTED ENGINEERING PRACTICE, IS TRUE AND CORRECT, AND IS IN CONFORMANCE WITH CHAPTER 105 OF THE RULES AND REGULATIONS OF THE DEPARTMENT OF ENVIRONMENTAL PROTECTION.

John R. Heyl
 Signature, John R. Heyl, P.E., CPESC

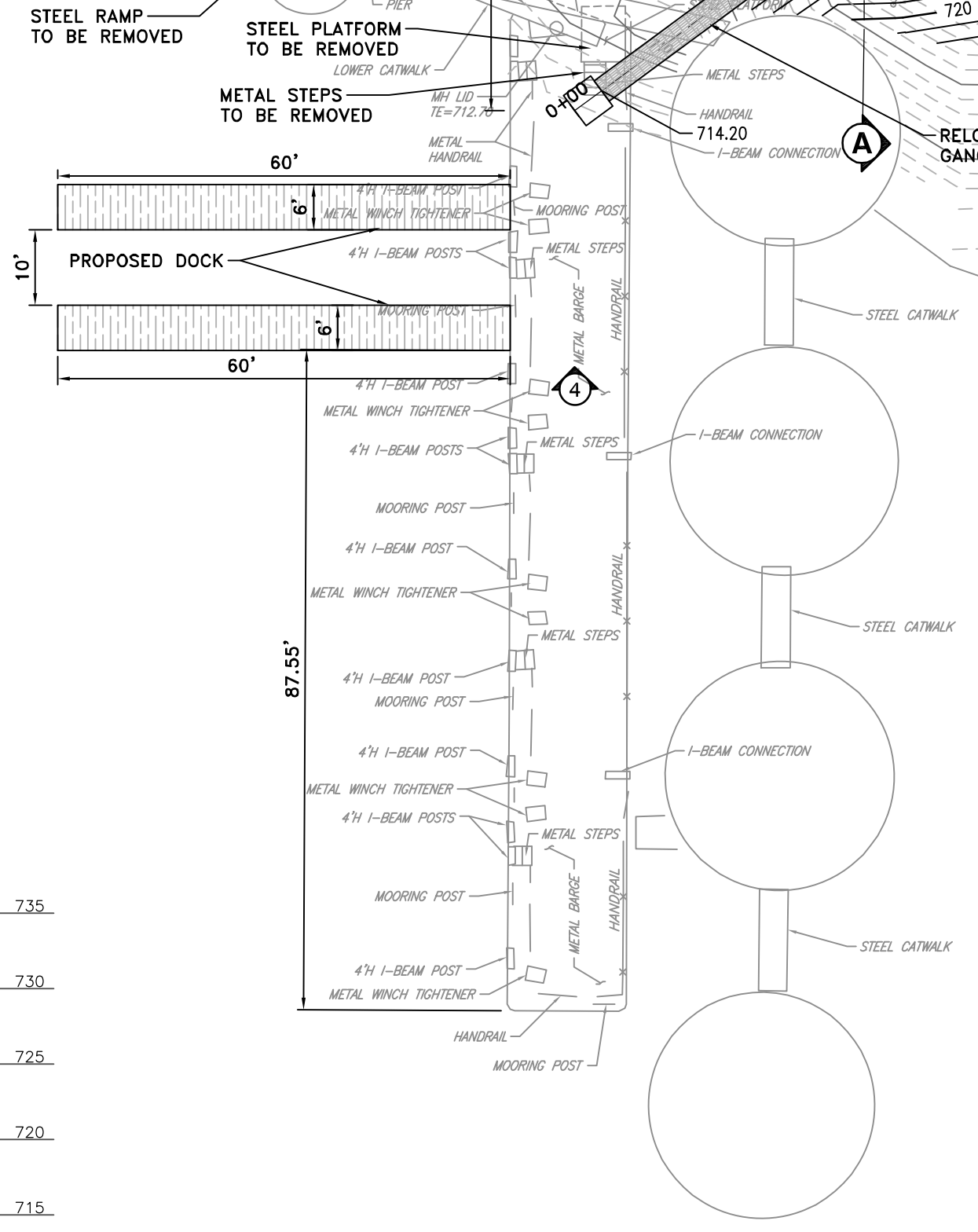
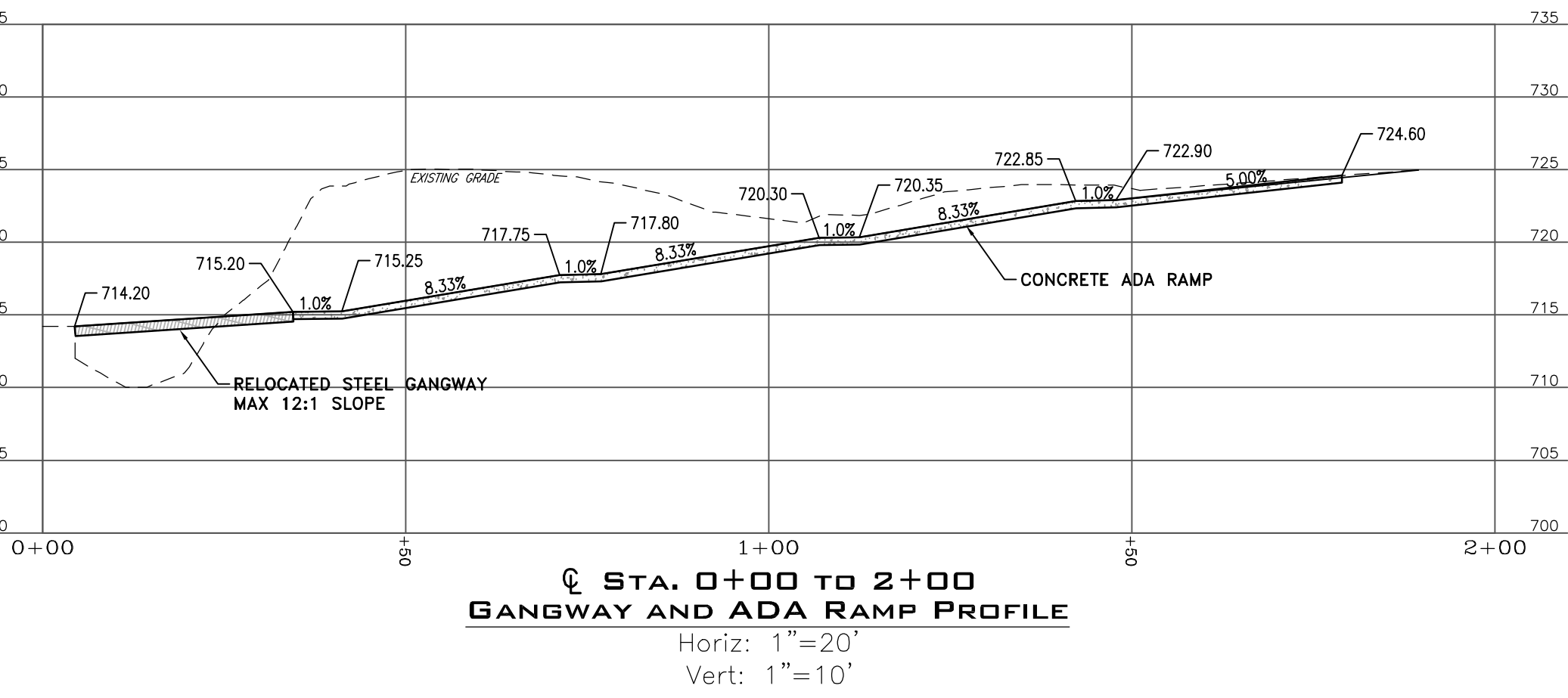
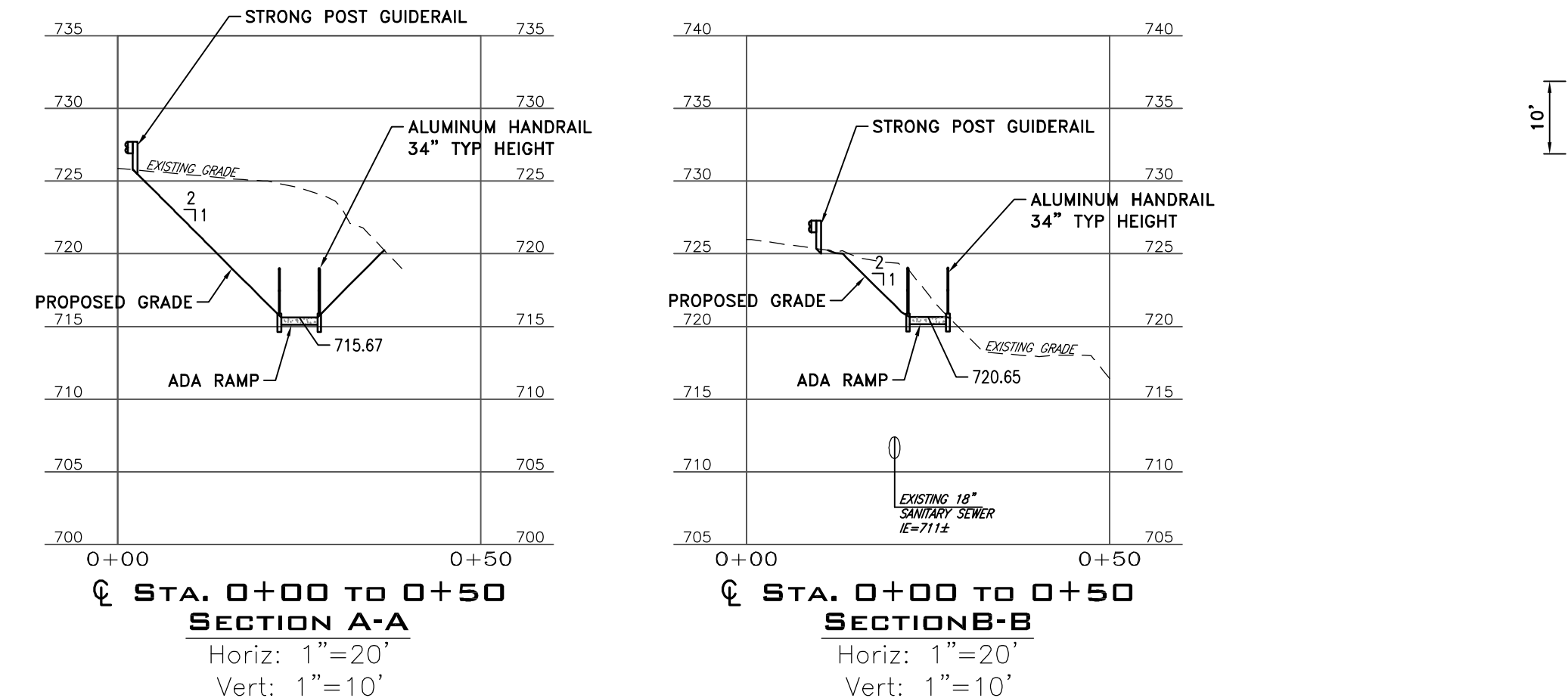
4/22/20
 Date



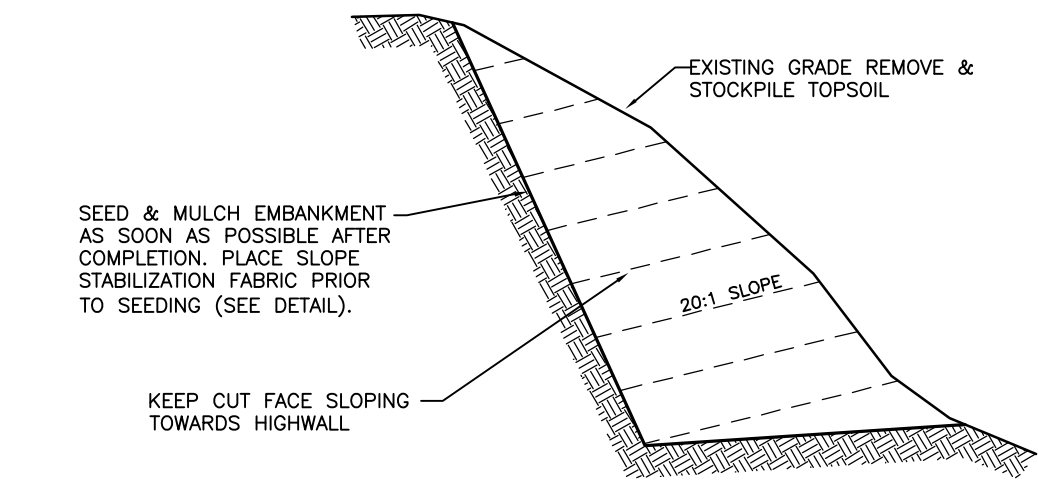
- NOTES:**
- WALK SHALL BE CROSS SCORED EVERY FIVE FEET (5'), 1/2" PREFORMED EXPANSION JOINTS EVERY 20 FEET. WALK SHALL HAVE TROWELED EDGES WITH A STIFF BROOM FINISH.
 - IF A DRIVEWAY IS TO BE CONSTRUCTED OVER A SIDEWALK, THE CONCRETE SHALL BE PLACED AT 6" DEPTH.
 - PROVIDE TWO (2) NO. 4 DOWELS AT PROPERTY LINES.
 - EXCAVATION, DEMOLITION OF EXISTING WALKWAY (IF ANY) AND SUBBASE ARE INCIDENTAL TO CONCRETE WALK CONSTRUCTION.
 - PROVIDE ADA CURB RAMP AT ALL INTERSECTIONS.
- TYPICAL CONCRETE SIDEWALK**
 N. T. S.



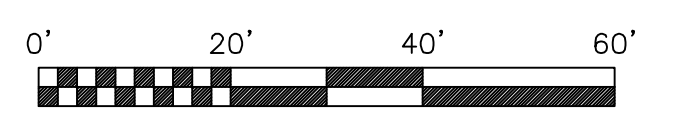
PN 20-26
LRP-2015-1570



MONONGEHELA RIVER
 FLOW



CUT SLOPE CONSTRUCTION
 TO MINIMIZE EROSION
 N. T. S.



Scale:	No.	Date	Description	By	No.	Date	Description	By	No.	Date	Description	By
1" = 20'												

Lennon, Smith, Souleret
 Engineering, Inc.
 846 4th Avenue
 Coraopolis, Pennsylvania 15108
 Phone: 412-264-4400
 Fax: 412-264-1200
 email: info@lsse.com

Filename: M75401201SP.dwg
 Date: March 2020

Central Diesel Power Company
 2 Gateway Center
 Pittsburgh, Pennsylvania 15222

Central Catholic Boat House and Dock
 City of Pittsburgh, Allegheny County, Pennsylvania



CALL BEFORE YOU DIG!
 PENNSYLVANIA LAW REQUIRES
 3 WORKING DAYS NOTICE FOR
 CONSTRUCTION PHASE AND 10 WORKING
 DAYS IN DESIGN STAGE - STOP CALL
 Pennsylvania One Call System, Inc.
CALL 1-800-242-1776
 POCSSerial No. 20190303959

