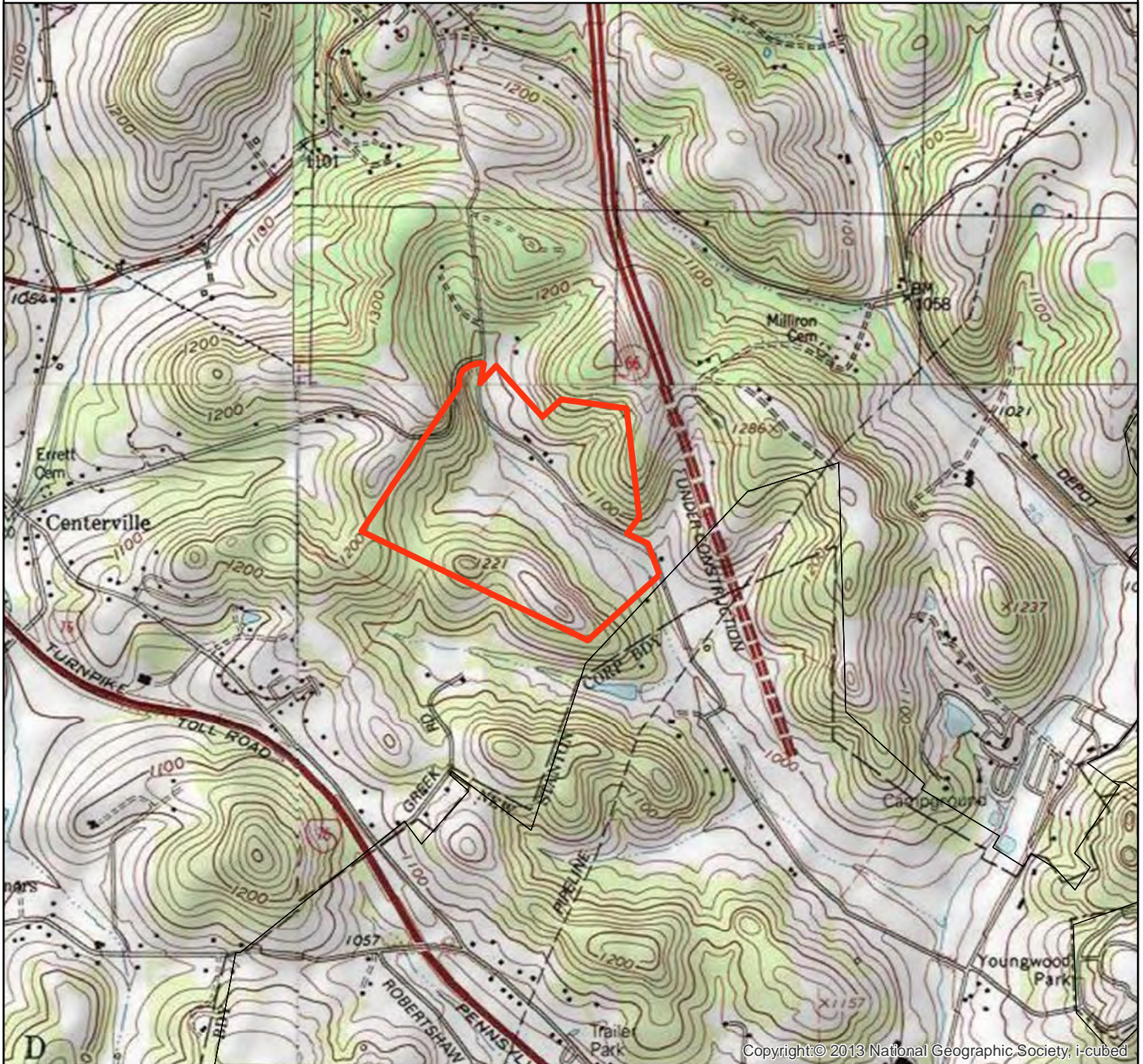
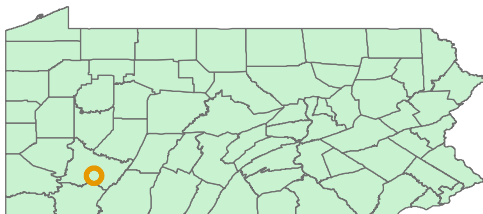


**Figure 1**  
**USGS Project Location Map**  
Shrader Hollow Road Banking Site  
Hempfield Township, Westmoreland County, Pennsylvania



Copyright © 2013 National Geographic Society, i-cubed



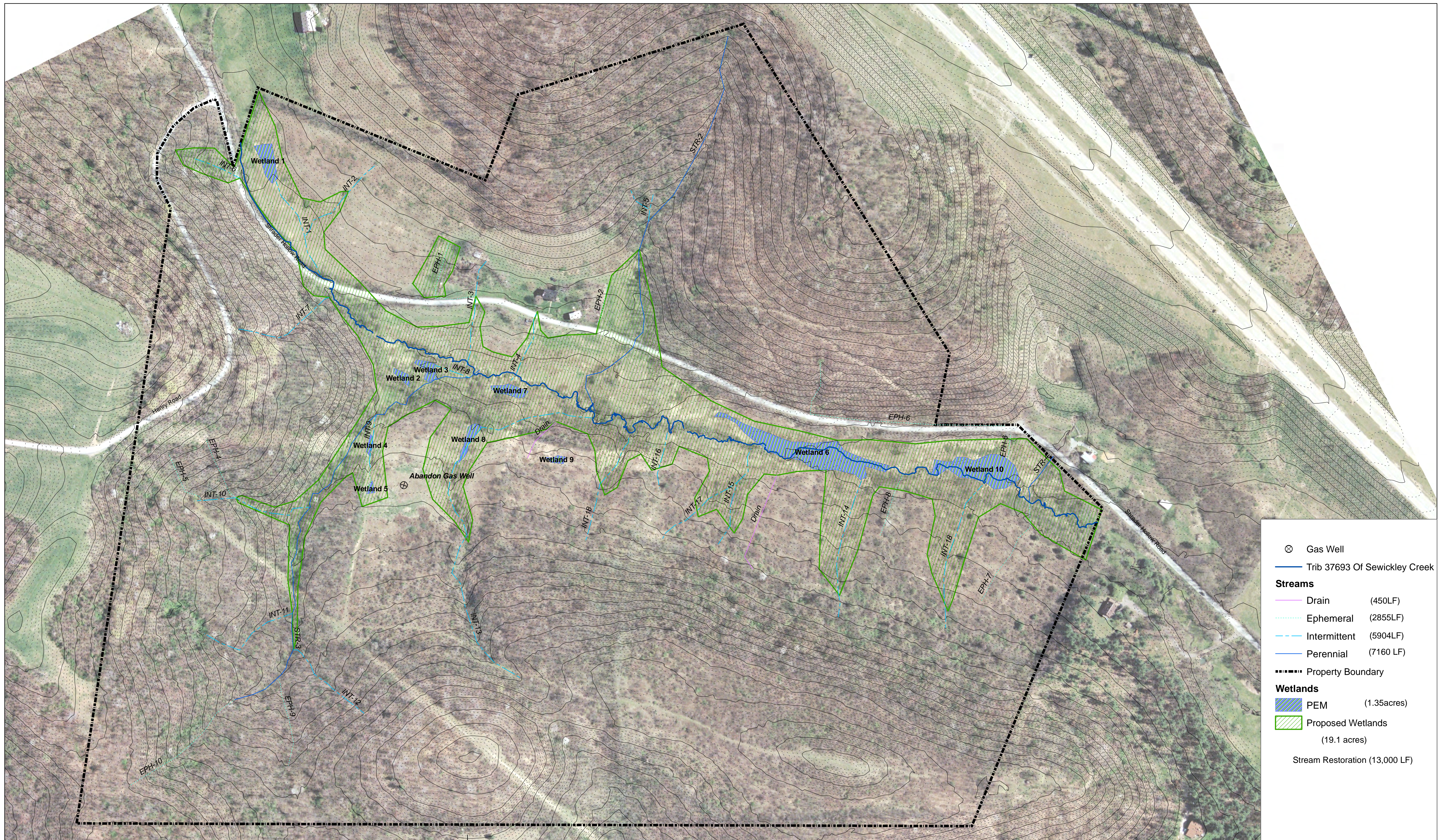
— Property Boundary




Scale: 1:24,000

Map Source: USGS  
Mt. Pleasant Quadrangle





⊗ Gas Well  
 — Trib 37693 Of Sewickley Creek  
**Streams**  
 — Drain (450LF)  
 - - - Ephemeral (2855LF)  
 - · - · Intermittent (5904LF)  
 — Perennial (7160 LF)  
 - · - · - · Property Boundary  
**Wetlands**  
 ▨ PEM (1.35acres)  
 ▨ Proposed Wetlands (19.1 acres)  
 Stream Restoration (13,000 LF)

 Land Reclamation Group, LLC  
 632 Hunt Valley Circle  
 New Kensington, PA 15068

# Shradar Hollow Road - Restoration

Hempfield Township, Westmoreland County

