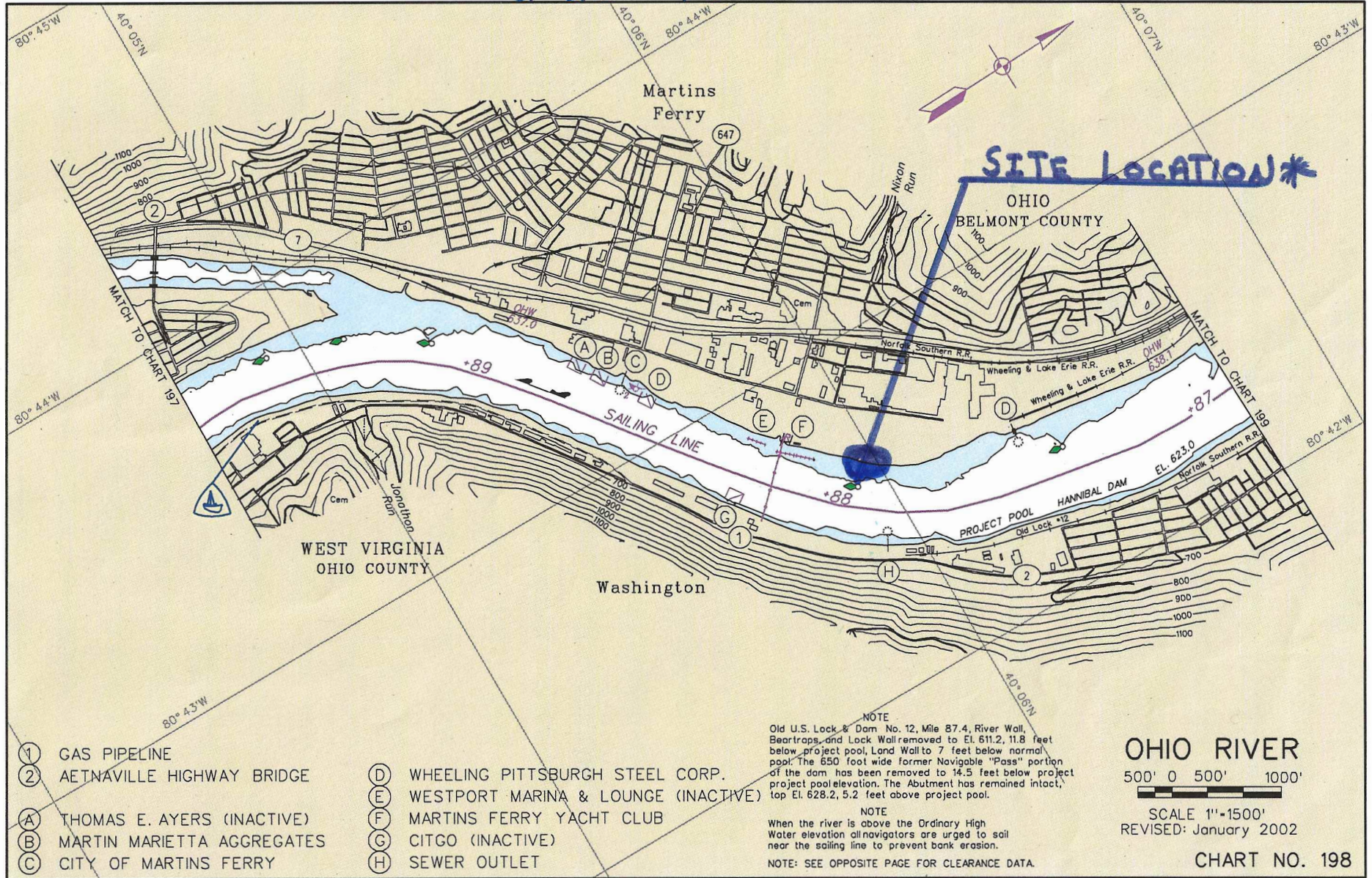
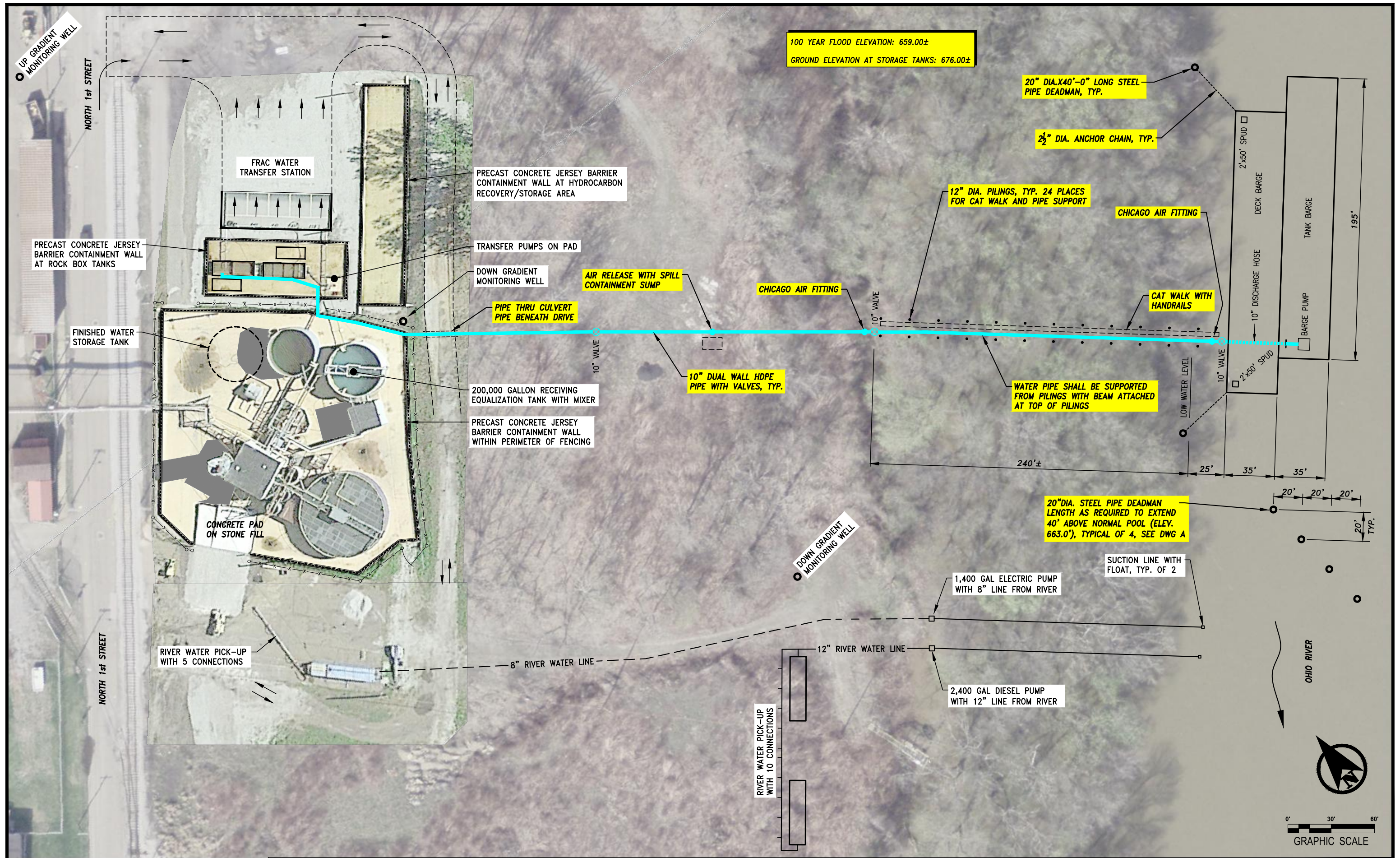


2020-78







100 YEAR FLOOD ELEVATION: 659.00±  
 GROUND ELEVATION AT STORAGE TANKS: 676.00±

20" DIA. X 40'-0" LONG STEEL PIPE DEADMAN, TYP.

2 1/2" DIA. ANCHOR CHAIN, TYP.

12" DIA. PILINGS, TYP. 24 PLACES FOR CAT WALK AND PIPE SUPPORT

CHICAGO AIR FITTING

CAT WALK WITH HANDRAILS

WATER PIPE SHALL BE SUPPORTED FROM PILINGS WITH BEAM ATTACHED AT TOP OF PILINGS

AIR RELEASE WITH SPILL CONTAINMENT SUMP

CHICAGO AIR FITTING

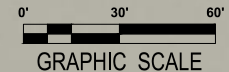
10" DUAL WALL HDPE PIPE WITH VALVES, TYP.

20" DIA. STEEL PIPE DEADMAN LENGTH AS REQUIRED TO EXTEND 40' ABOVE NORMAL POOL (ELEV. 663.0'), TYPICAL OF 4, SEE DWG A

1,400 GAL ELECTRIC PUMP WITH 8" LINE FROM RIVER

SUCTION LINE WITH FLOAT, TYP. OF 2

2,400 GAL DIESEL PUMP WITH 12" LINE FROM RIVER



NO.	DATE	REVISION

DRAWN BY:  
CHARITY LONG  
 CHECKED BY:  
JEFFREY A. VAUGHN

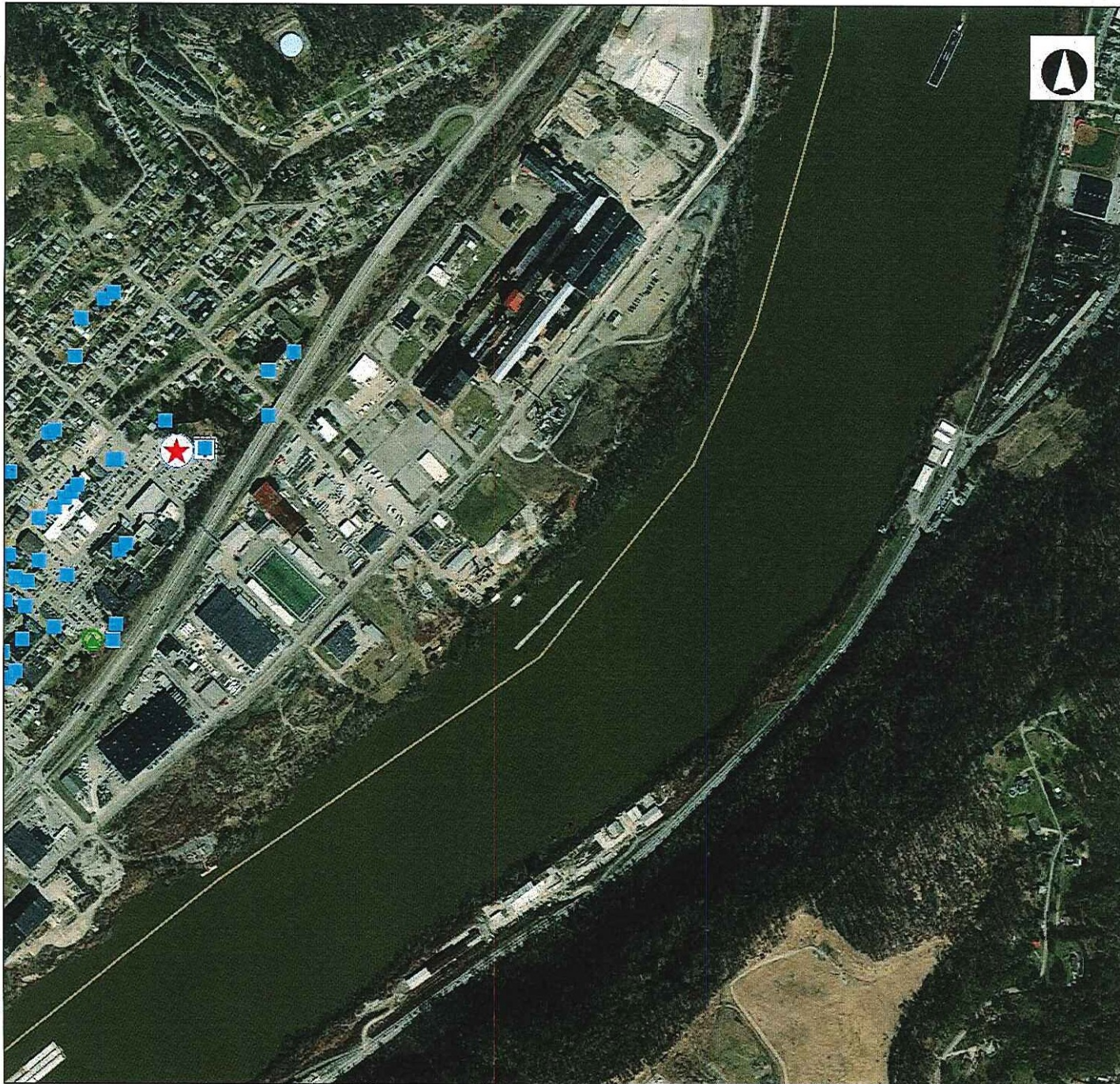
**VAUGHN, COAST & VAUGHN, INC.**  
 Engineers  
 154 South Marietta Street  
 St. Clairsville, Ohio 43950  
 740-695-7256 Fax: 740-695-2203

4K INDUSTRIAL PARK, LLC  
 - 4K Industrial River Transload Facility -  
 Martins Ferry - Belmont County, Ohio

**SITE PLAN**

SCALE: 1"=30' (22"x34")  
 1"=60' (11"x17")  
 DATE: JANUARY 2020  
 PROJECT NO. 19068  
 DRAWING NO. 1





**Legend**

NR Listings

- Listed
- Ⓡ National Historic Landmark
- :W: Delisted

NR Determinations of Eligibility

- ... Archaeological Sites
- Historic Structures
- Historic Bridges
- Historic Tax Credit Projects

OGS Cemeteries

- [t] Confident
- [f] Not Confident

Ⓡ Historic Markers

UTM Zone Split

[ZI] NR Boundaries

□ OAI Site Boundaries

Phase 1

Phase 2

0 0.15 0.29 Miles

1: 11,674

Copyright/Disclaimer

This map is a user-generated static output from an Internet mapping site and is for general reference only. Data layers that appear on this map may or may not be accurate, current, or otherwise reliable. THIS MAP IS NOT TO BE USED FOR NAVIGATION.

Datum: [Datum]

Projection: VVGS\_1984\_Web\_Mercator\_Australian\_Spheroid

