

LEGEND

- SEDIMENT: -0.5' TO -1.99'
- SEDIMENT: -2.00' TO -3.99'
- SEDIMENT: -4.00' TO -9.00'
- ENVIRONMENTAL FIELD SAMPLE LOCATION AND IDENTIFICATION NUMBER
- RIVER RESTORATION GRADING WORK AREA
- CONTAMINATED SEDIMENT, PRIORITY SEDIMENT REMOVAL AREA
- MUNICIPAL BOUNDARY
- PROPOSED DREDGE AREA PRIORITY ZONE #

- GENERAL DREDGE ACTIVITY SEQUENCE**
- REMOVE WOODY DEBRIS LOG JAM AT DAM SITE.
 - IMPLEMENT WATER MANAGEMENT PLAN / DEWATERING TRENCH PER SHEET 9.
 - DREDGE SELECTED LOCATIONS IN ORDER OF PRIORITY ZONE # 1-4. MORE OR LESS SEDIMENT MAY BE DREDGED BASED ON ACTUAL SITE CONDITIONS AND AVAILABLE BUDGET. NOTE, SEDIMENT AREAS SHOWN OUTSIDE OF PRIORITY DREDGE ZONES HAS BEEN DEEMED TO REMAIN BASED ON THE SEDIMENT SAMPLING STUDY.
 - UTILIZE SILT CURTAIN AND/OR OIL BOOM AS NEEDED ADJACENT TO THE DREDGE OPERATION.
 - DREDGE DEPTHS PER CROSS-SECTIONS ON SHEETS 11-13.
 - UTILIZE DEFINED UPLAND AREA(S) FOR DREDGE SPOIL PLACEMENT PER SHEET 14.

REV.	DATE	DESCRIPTION

Struthers Dam Removal
Struthers, OH

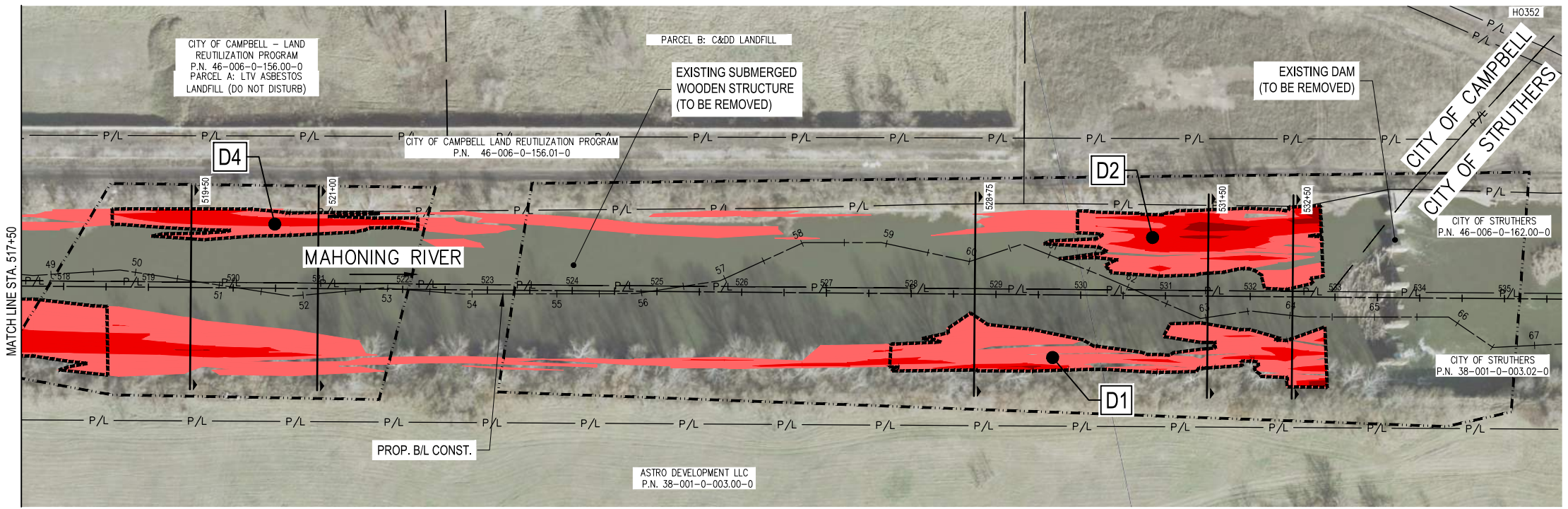
SWPPP DREDGE PLAN

ISSUED FOR:	
PERMIT	-
BID	-
CONSTRUCTION	-
RECORD	-

JOB NO:
2019330

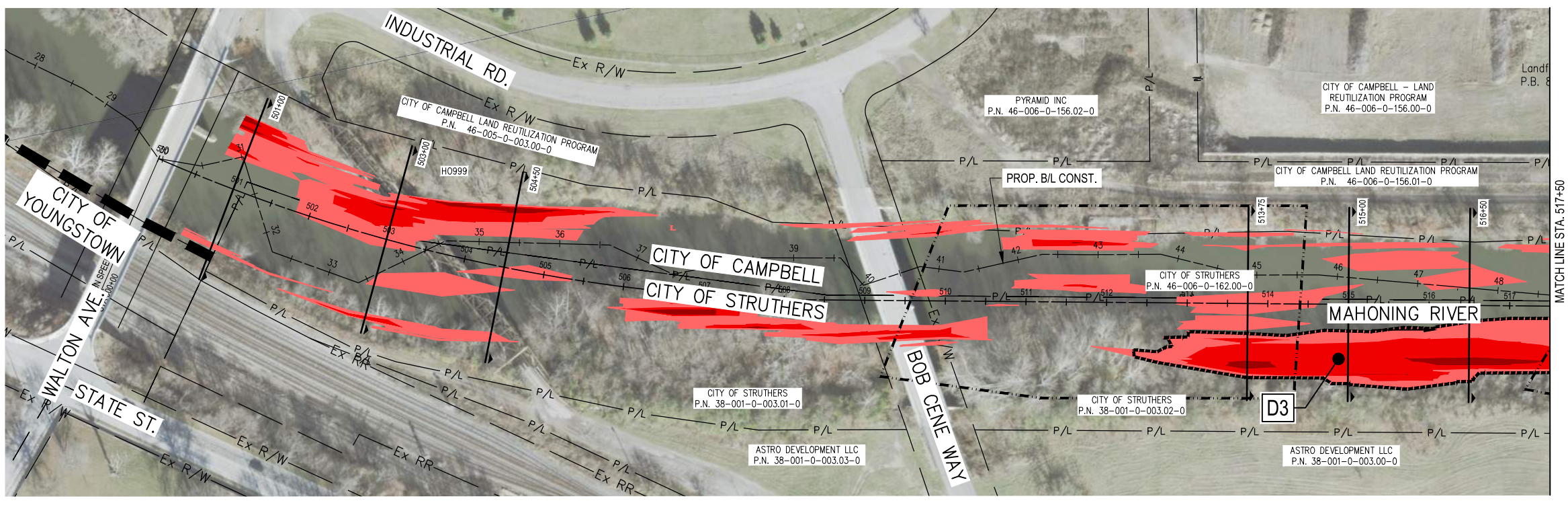
SHEET:
C-206

SHEET NO:
SHEET 10/29

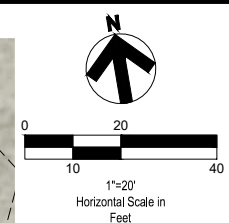


NOTE: DREDGE QUANTITIES REFLECT ONLY DREDGING EXCAVATION VOLUMES PRIOR TO PROPOSED RIVER RESTORATION GRADING. DREDGED AREAS SHALL BE FILLED PER THE PROPOSED RIVER GRADING (REFER TO RIVER RESTORATION GRADING PLANS ON SHEET 17).

30% DREGE SEDIEMENT QUANTITIES		
DREDGE AREA NO.	APPROX. CUT (CY)	NOTES
D1	1055	INSIDE GRADING AREA G2
D2	1550	INSIDE GRADING AREA G2
D3	3100	PARTIALLY INSIDE GRADING AREA G3 & G4
D4	620	INSIDE GRADING AREA G3
TOTAL	6325	



C:\2019\2019330_STRUTHERS DAM CIVIL SHEETS\2019330_LAYOUT\AREAS.DWG - SWPPP PLAN - DREDGE PLAN - PLOTTED XX/XX/XX BY CARLTON, BRIAN



REV.	DATE	DESCRIPTION

Struthers Dam Removal
 Struthers, OH

DAM REMOVAL PLAN

ISSUED FOR:	
PERMIT	-
BID	-
CONSTRUCTION	-
RECORD	-

JOB NO.
2019330

SHEET:
C-301

SHEET NO.
SHEET 16/29

LEGEND

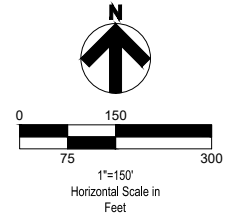
- ACCESS ROUTE
- DAM REMOVAL LIMITS
- POTENTIAL CONCRETE SPOIL AREA

GENERAL DAM REMOVAL KEYNOTES

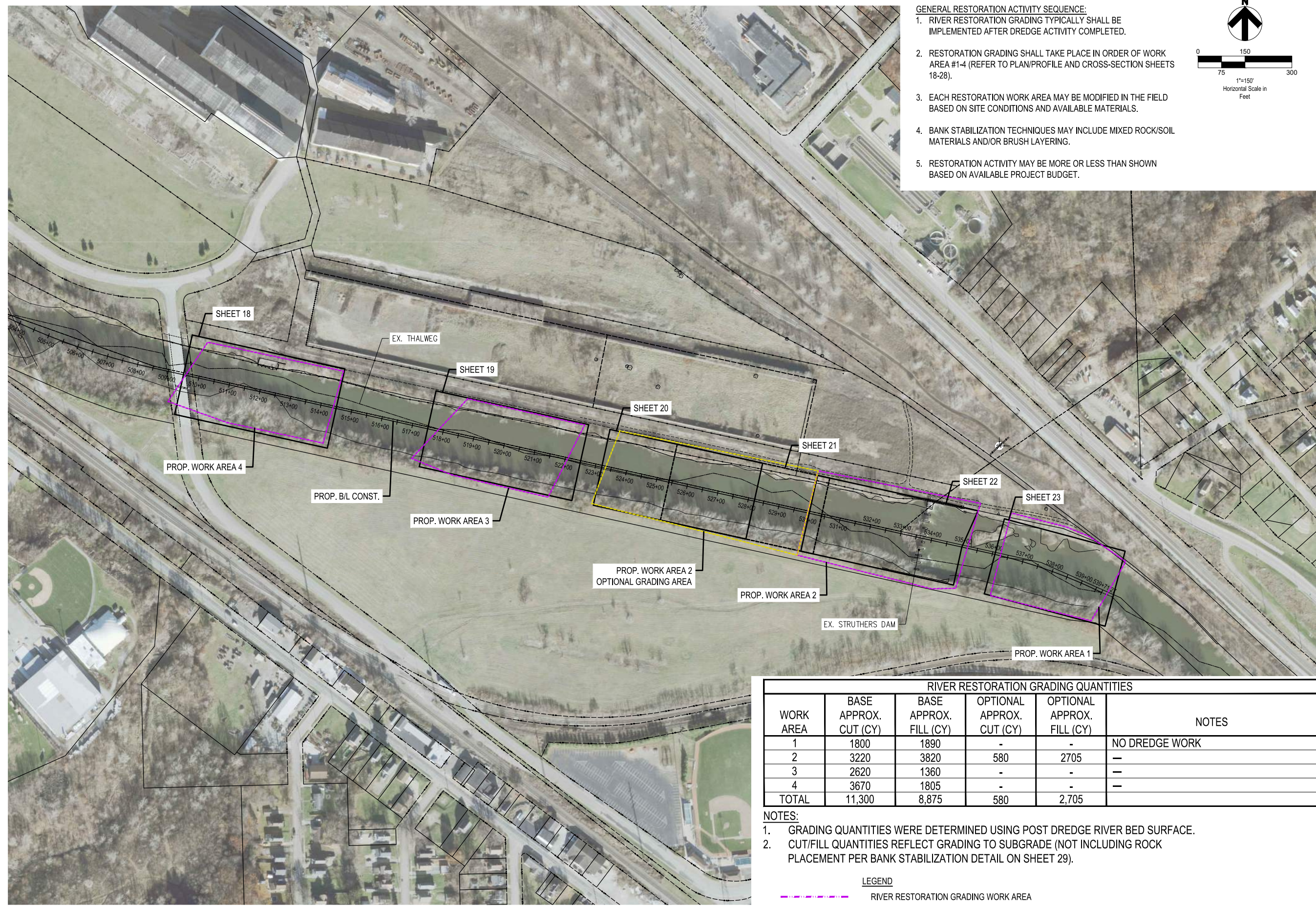
- ① ACCESS AND STAGING FROM THE NORTH BANK.
- ② REMOVE FROM SOUTH TO NORTH (NOTE: DAM REMOVAL TO TAKE PLACE SUBSEQUENT TO DREDGING ACTIVITY).
- ③ CONCRETE DEBRIS TO BE PLACED BENEATH PLANNED RESTORATION AREAS.

ASTRO DEVELOPMENT LLC
 P.N. 38-001-0-003.00-0

C:\2019_2019330_STRUTHERS DAM CIVIL SHEETS\2019330 DAM REMOVAL\DWG - STRUTHERS DAM REMOVAL - PLOTTED 7/25/2019 BY CARLTON, BRIAN



- GENERAL RESTORATION ACTIVITY SEQUENCE:**
1. RIVER RESTORATION GRADING TYPICALLY SHALL BE IMPLEMENTED AFTER DREDGE ACTIVITY COMPLETED.
 2. RESTORATION GRADING SHALL TAKE PLACE IN ORDER OF WORK AREA #1-4 (REFER TO PLAN/PROFILE AND CROSS-SECTION SHEETS 18-28).
 3. EACH RESTORATION WORK AREA MAY BE MODIFIED IN THE FIELD BASED ON SITE CONDITIONS AND AVAILABLE MATERIALS.
 4. BANK STABILIZATION TECHNIQUES MAY INCLUDE MIXED ROCK/SOIL MATERIALS AND/OR BRUSH LAYERING.
 5. RESTORATION ACTIVITY MAY BE MORE OR LESS THAN SHOWN BASED ON AVAILABLE PROJECT BUDGET.



RIVER RESTORATION GRADING QUANTITIES					
WORK AREA	BASE APPROX. CUT (CY)	BASE APPROX. FILL (CY)	OPTIONAL APPROX. CUT (CY)	OPTIONAL APPROX. FILL (CY)	NOTES
1	1800	1890	-	-	NO DREDGE WORK
2	3220	3820	580	2705	-
3	2620	1360	-	-	-
4	3670	1805	-	-	-
TOTAL	11,300	8,875	580	2,705	

- NOTES:**
1. GRADING QUANTITIES WERE DETERMINED USING POST DREDGE RIVER BED SURFACE.
 2. CUT/FILL QUANTITIES REFLECT GRADING TO SUBGRADE (NOT INCLUDING ROCK PLACEMENT PER BANK STABILIZATION DETAIL ON SHEET 29).

- LEGEND**
- RIVER RESTORATION GRADING WORK AREA
 - OPTIONAL RIVER RESTORATION GRADING WORK AREA

REV.	DATE	DESCRIPTION

Struthers Dam Removal
 Struthers, OH

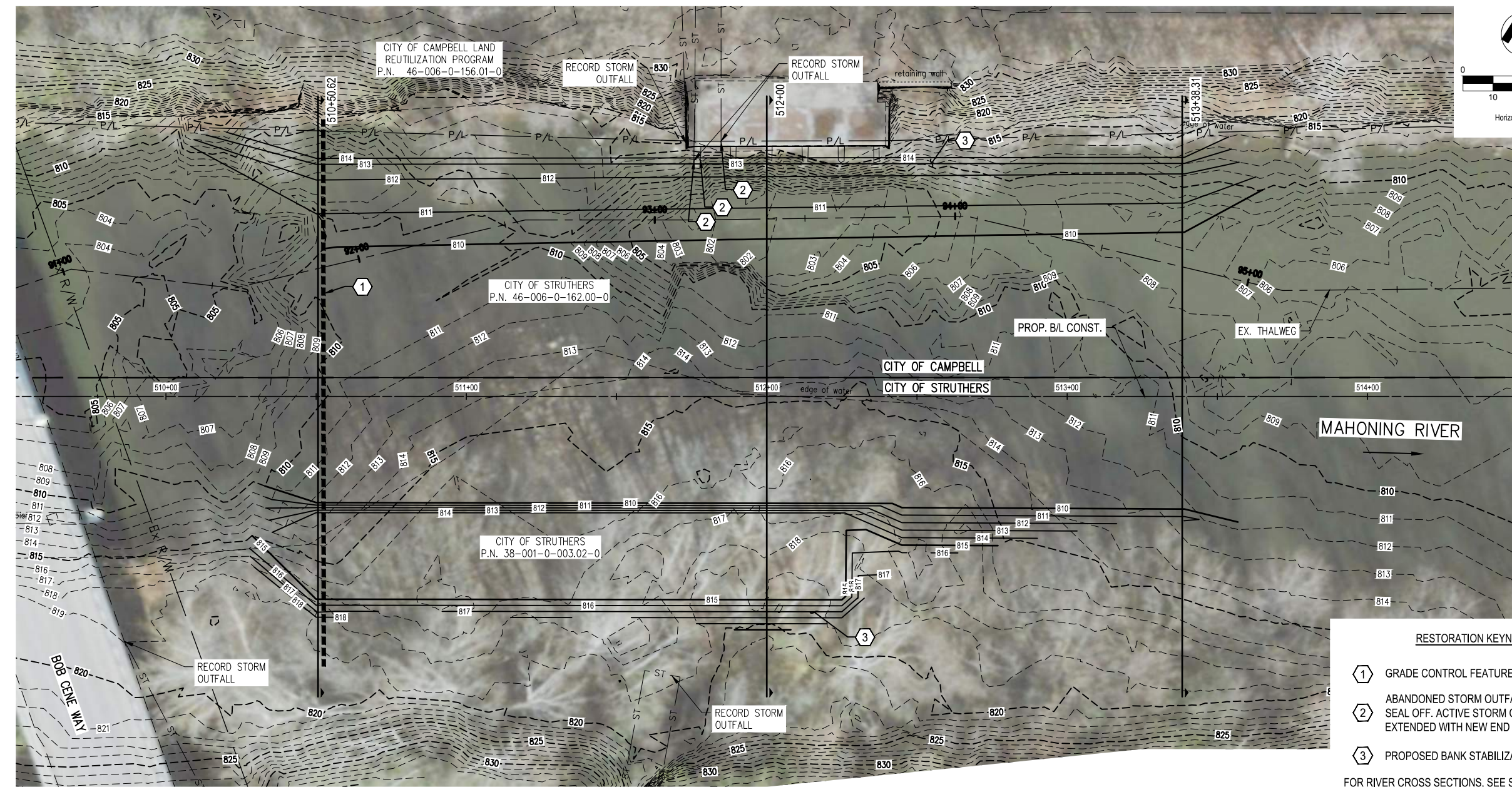
**RIVER RESTORATION
 KEY PLAN**

ISSUED FOR:	
PERMIT	-
BID	-
CONSTRUCTION	-
RECORD	-

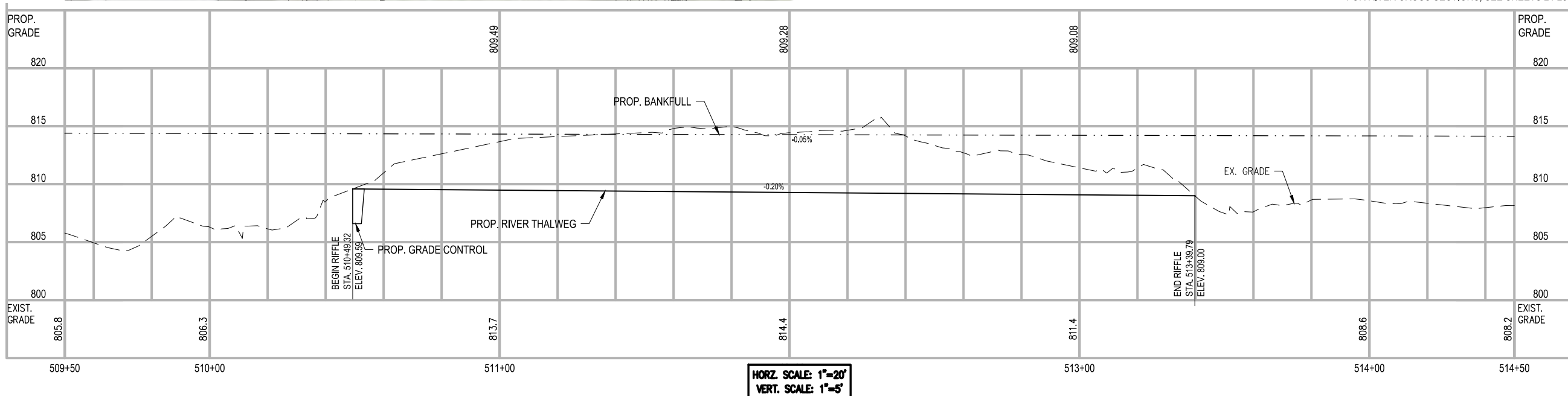
JOB NO:
2019330

SHEET:
C-401

SHEET NO:
SHEET 17/29



- RESTORATION KEYNOTES**
- ① GRADE CONTROL FEATURE (SEE SHEET 29)
 - ② ABANDONED STORM OUTFALL; CONFIRM AND SEAL OFF. ACTIVE STORM OUTFALL SHALL BE EXTENDED WITH NEW END TREATMENT.
 - ③ PROPOSED BANK STABILIZATION RESTORATION.
- FOR RIVER CROSS SECTIONS, SEE SHEETS 24-28.



REV.	DATE	DESCRIPTION

Struthers Dam Removal
 Struthers, OH

**RIVER RESTORATION
 PLAN AND PROFILE
 WORK AREA 4**

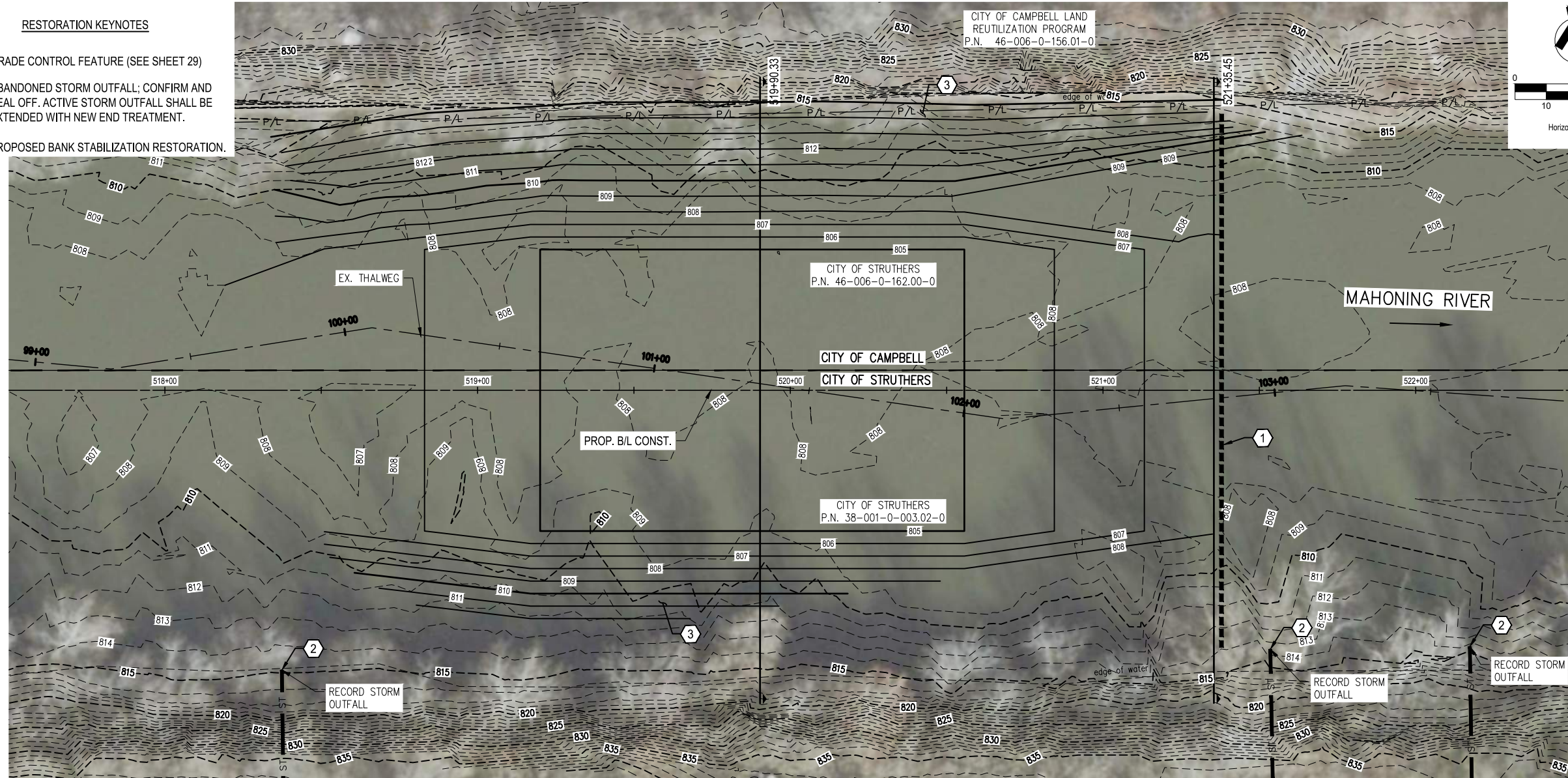
ISSUED FOR:

PERMIT	-
BID	-
CONSTRUCTION	-
RECORD	-

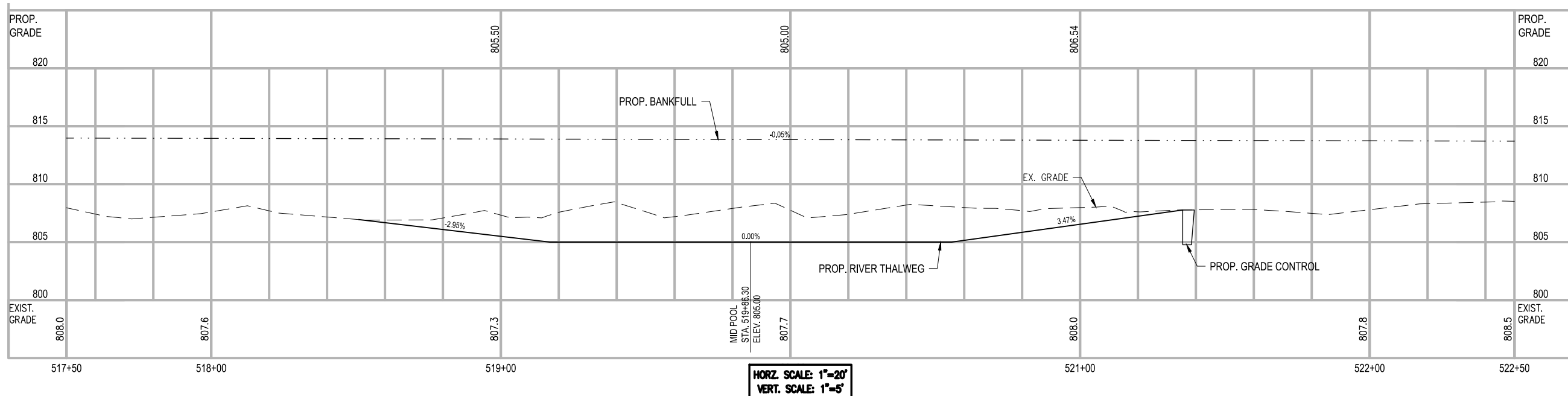
C:\2019_2019330_STRUTHERS DAM CIVIL SHEETS\2019330 PLANS AND PROFILES 1.DWG - RIVER PLAN AND PROFILE 4 - PLOTTED 7/26/2019 BY CARLTON, BRIAN

RESTORATION KEYNOTES

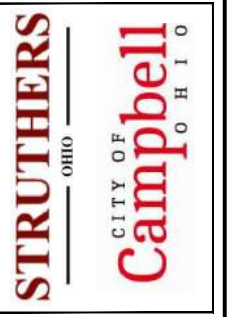
- ① GRADE CONTROL FEATURE (SEE SHEET 29)
- ② ABANDONED STORM OUTFALL; CONFIRM AND SEAL OFF. ACTIVE STORM OUTFALL SHALL BE EXTENDED WITH NEW END TREATMENT.
- ③ PROPOSED BANK STABILIZATION RESTORATION.



FOR RIVER CROSS SECTIONS, SEE SHEETS 24-28.



HORIZ. SCALE: 1"=20'
VERT. SCALE: 1"=5'



REV.	DATE	DESCRIPTION

Struthers Dam Removal
Struthers, OH

**RIVER RESTORATION
PLAN AND PROFILE
WORK AREA 3**

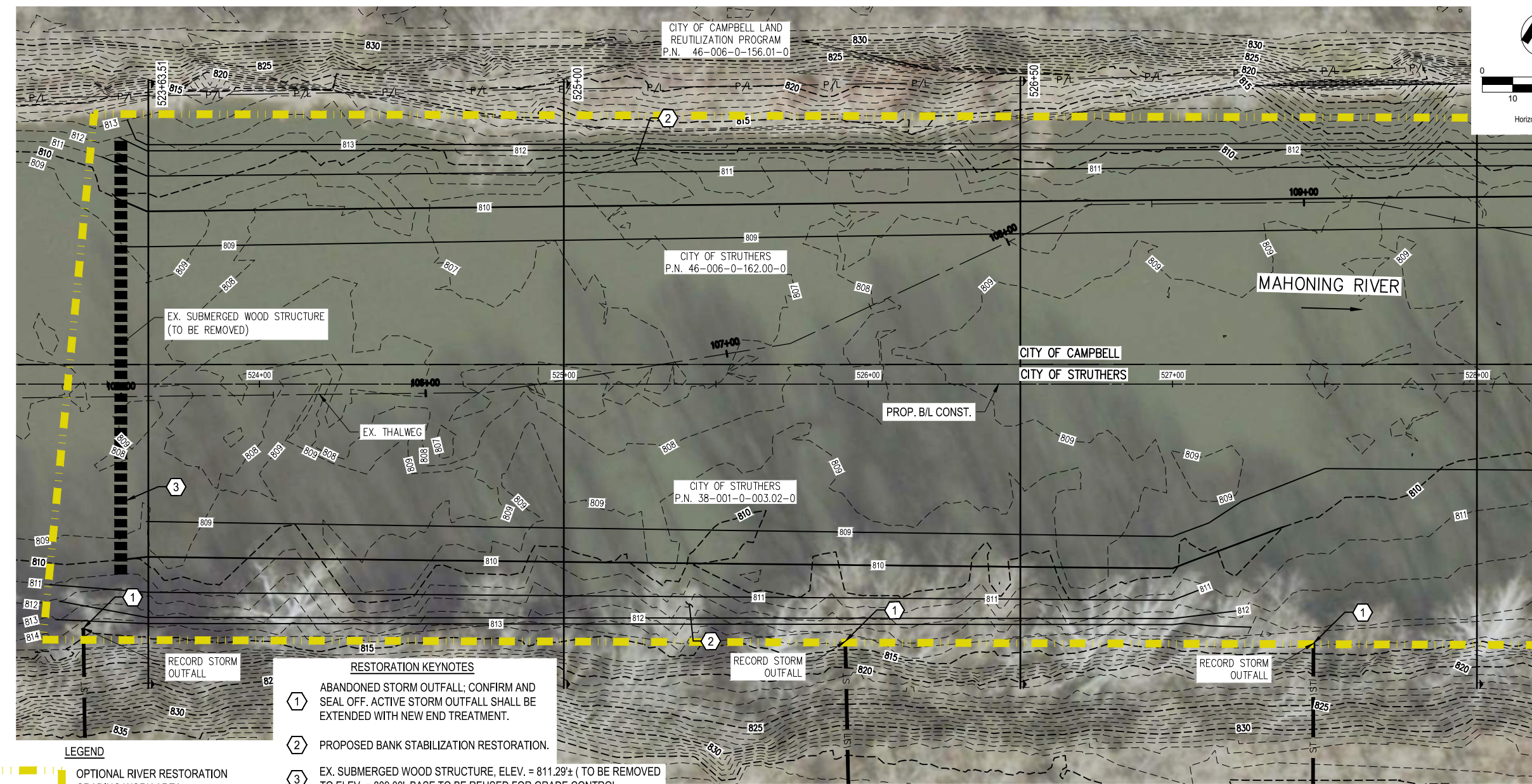
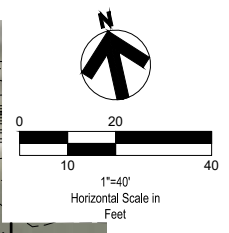
ISSUED FOR:	
PERMIT	-
BID	-
CONSTRUCTION	-
RECORD	-

JOB NO.
2019330

SHEET:
C-403

SHEET NO.
SHEET 19/29

C:\2019\2019330_STRUTHERS DAM CIVIL SHEETS\2019330 PLANS AND PROFILES 1.DWG - RIVER PLAN AND PROFILE 3 - PLOTTED 7/26/2019 BY CARLTON, BRIAN

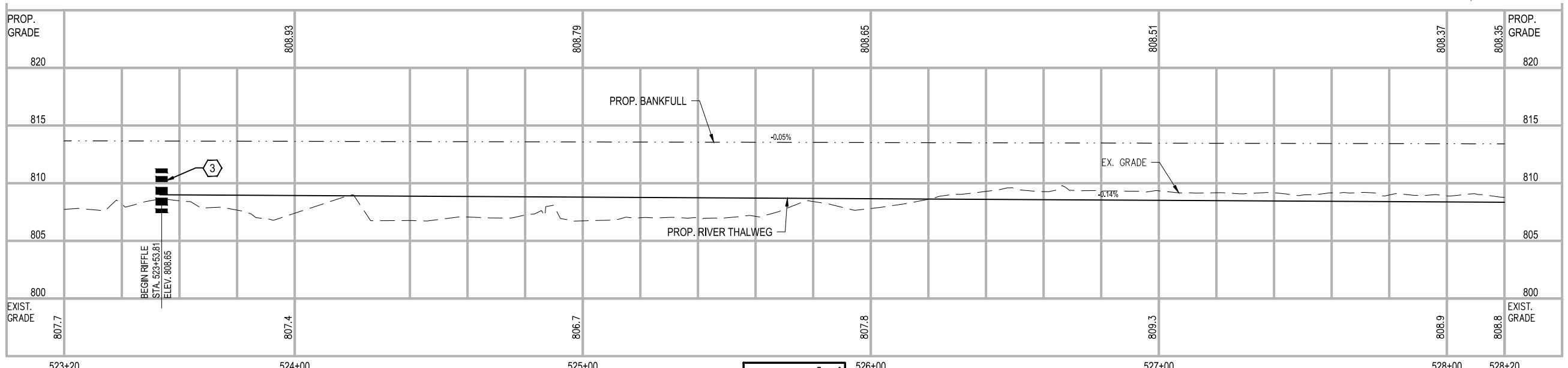


LEGEND

OPTIONAL RIVER RESTORATION GRADING WORK AREA

- RESTORATION KEYNOTES**
- ABANDONED STORM OUTFALL; CONFIRM AND SEAL OFF. ACTIVE STORM OUTFALL SHALL BE EXTENDED WITH NEW END TREATMENT.
 - PROPOSED BANK STABILIZATION RESTORATION.
 - EX. SUBMERGED WOOD STRUCTURE, ELEV. = 811.29± (TO BE REMOVED TO ELEV. = 809.00', BASE TO BE REUSED FOR GRADE CONTROL.

FOR RIVER CROSS SECTIONS, SEE SHEETS 24-28.



HORZ. SCALE: 1"=20'
VERT. SCALE: 1"=5'

REV.	DATE	DESCRIPTION

Struthers Dam Removal
 Struthers, OH

**RIVER RESTORATION
 PLAN AND PROFILE
 WORK AREA 2 WEST**

ISSUED FOR:

PERMIT	-
BID	-
CONSTRUCTION	-
RECORD	-

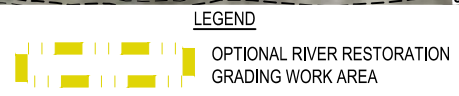
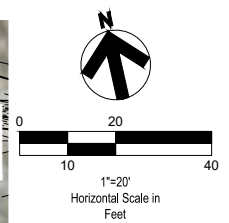
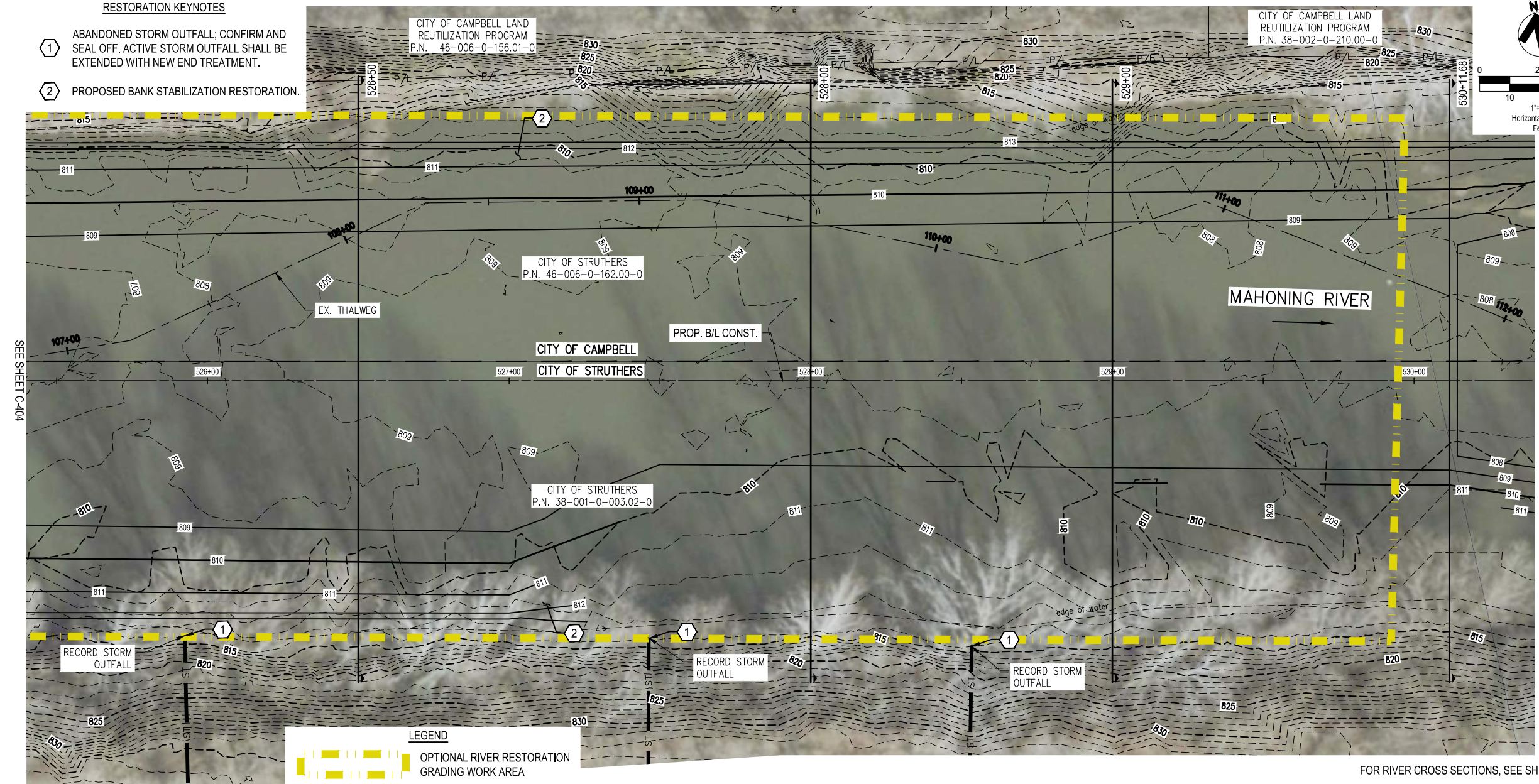
JOB NO.
2019330

SHEET:
C-404

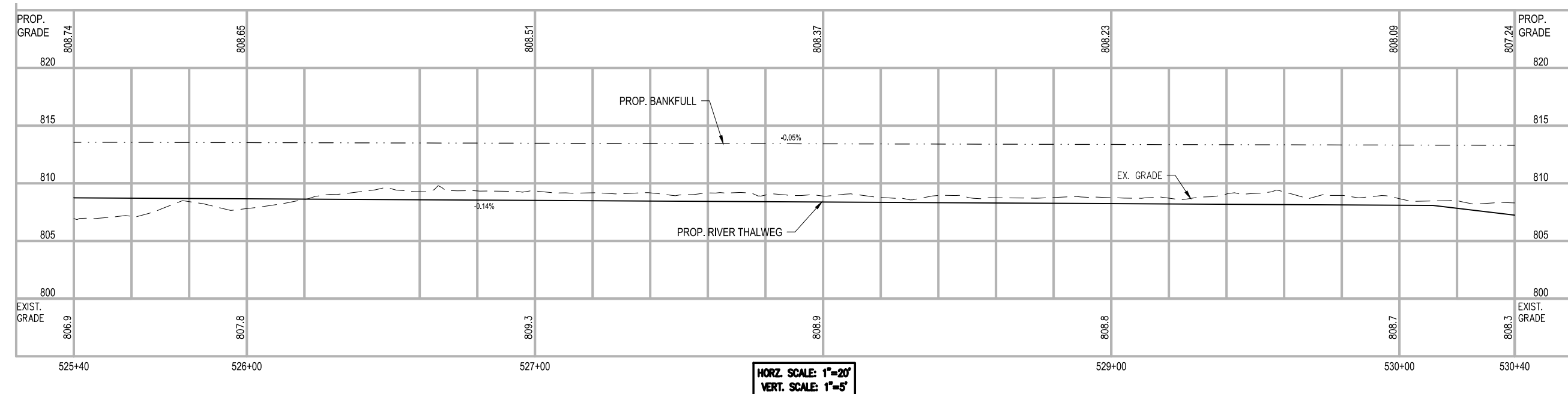
SHEET NO.
SHEET 20/29

RESTORATION KEYNOTES

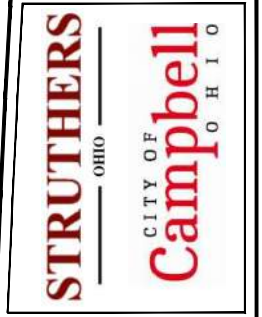
- ① ABANDONED STORM OUTFALL; CONFIRM AND SEAL OFF. ACTIVE STORM OUTFALL SHALL BE EXTENDED WITH NEW END TREATMENT.
- ② PROPOSED BANK STABILIZATION RESTORATION.



FOR RIVER CROSS SECTIONS, SEE SHEETS 24-28.



HORZ. SCALE: 1"=20'
VERT. SCALE: 1"=5'



REV.	DATE	DESCRIPTION

Struthers Dam Removal
Struthers, OH

**RIVER RESTORATION
PLAN AND PROFILE
WORK AREA 2**

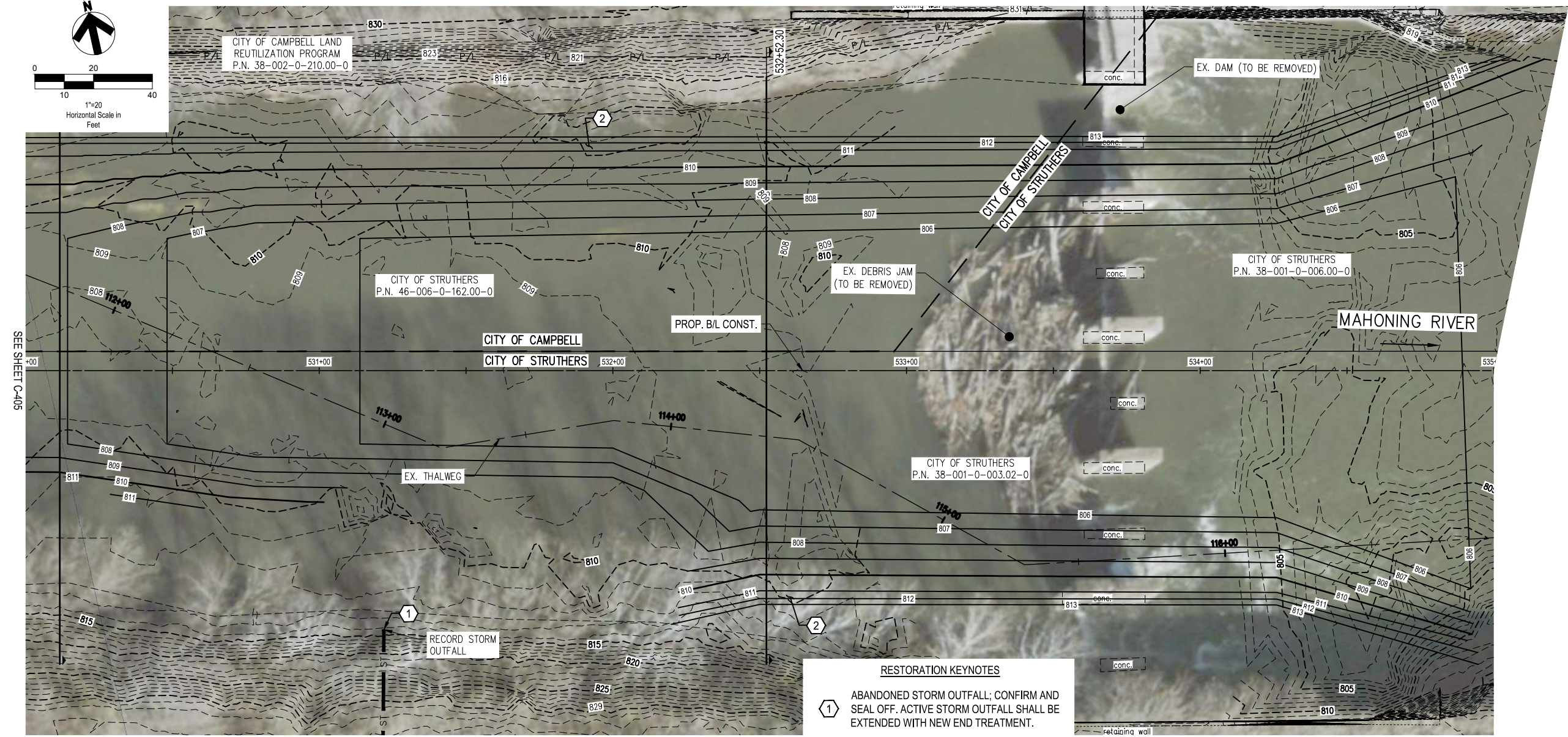
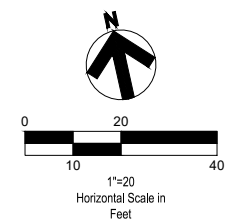
ISSUED FOR:	
PERMIT	-
BID	-
CONSTRUCTION	-
RECORD	-

JOB NO.
2019330

SHEET:
C-405

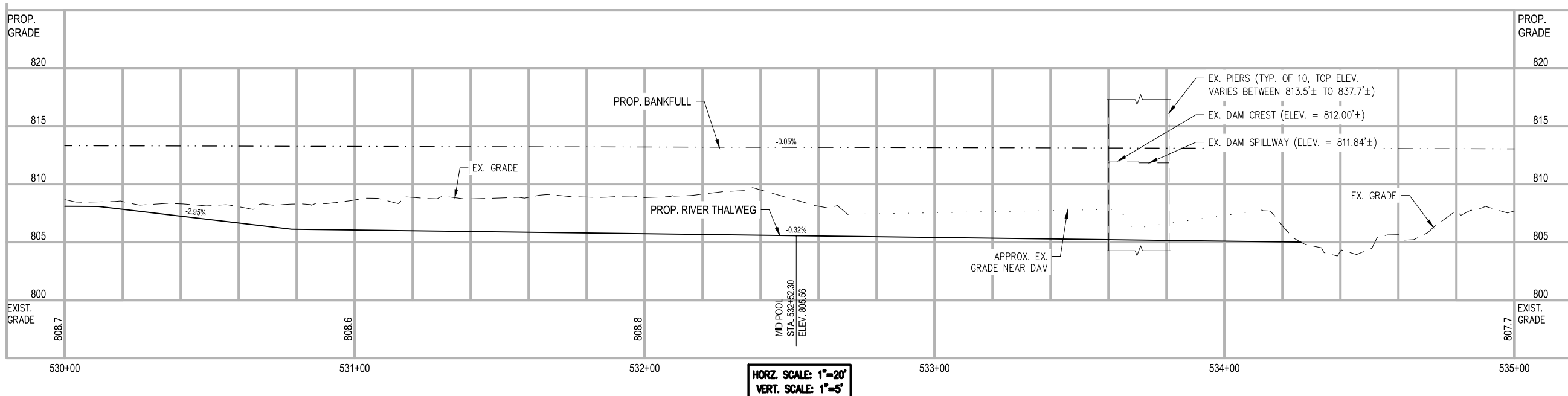
SHEET NO.
SHEET 21/29

C:\2019\2019330_STRUTHERS DAM CIVIL SHEETS\2019330 PLANS AND PROFILES 1.DWG - RIVER PLAN AND PROFILE 2 - PLOTTED XX/XX/XX BY CARLTON, BRIAN



- RESTORATION KEYNOTES**
- ① ABANDONED STORM OUTFALL; CONFIRM AND SEAL OFF. ACTIVE STORM OUTFALL SHALL BE EXTENDED WITH NEW END TREATMENT.
 - ② PROPOSED BANK STABILIZATION RESTORATION.

FOR RIVER CROSS SECTIONS, SEE SHEETS 24-28.



HORZ. SCALE: 1"=20'
VERT. SCALE: 1"=5'

REV.	DATE	DESCRIPTION

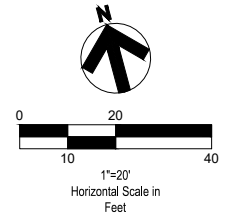
Struthers Dam Removal
Struthers, OH

**RIVER RESTORATION
PLAN AND PROFILE
WORK AREA 2 EAST**

ISSUED FOR:

PERMIT	-
BID	-
CONSTRUCTION	-
RECORD	-

C:\2019_2019330_STRUTHERS DAM CIVIL SHEETS\2019330 PLANS AND PROFILES 1.DWG - RIVER PLAN AND PROFILE 2E - PLOTTED 7/25/2019 BY CARLTON, BRIAN



REV.	DATE	DESCRIPTION

Struthers Dam Removal
 Struthers, OH

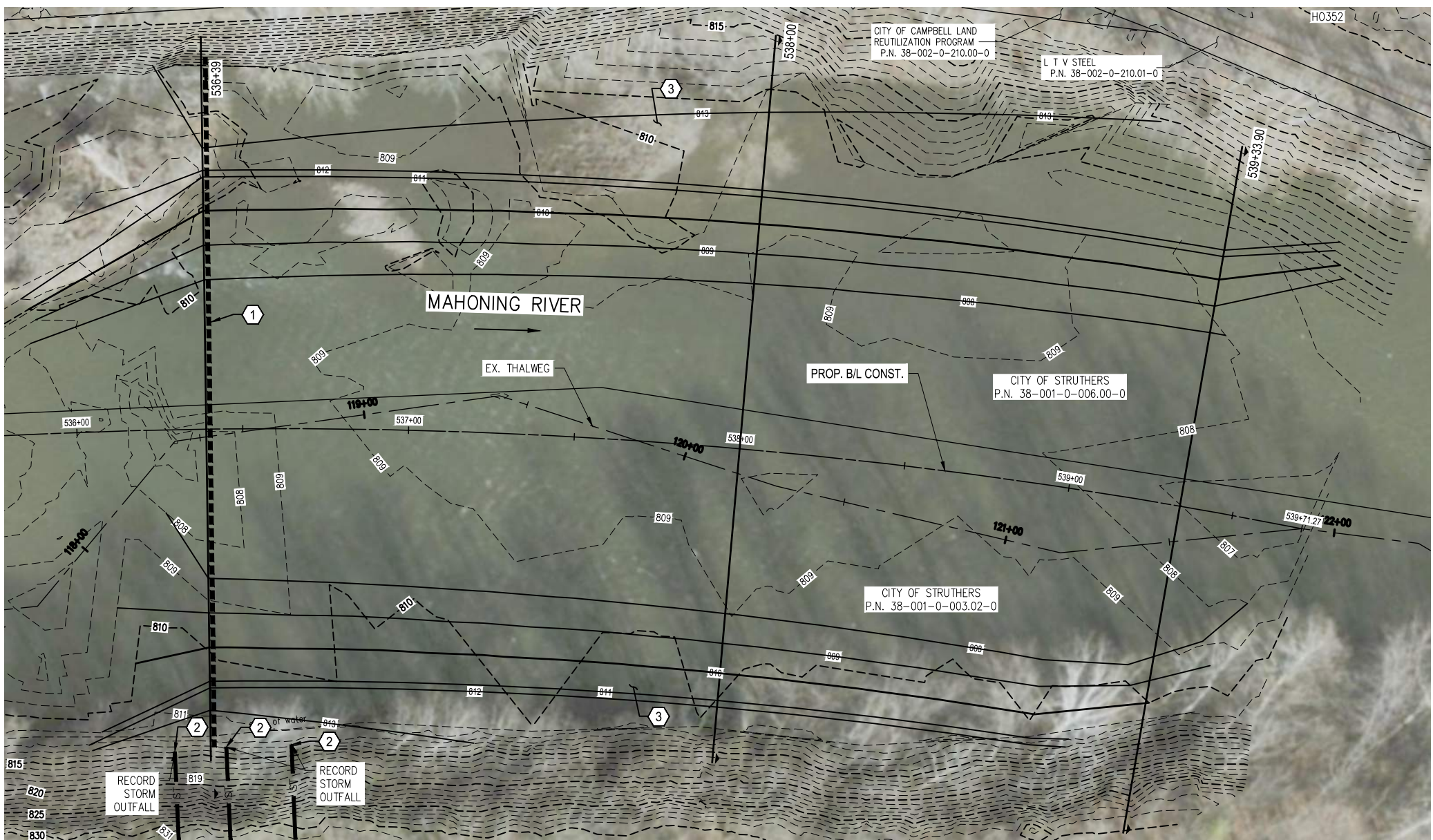
**RIVER RESTORATION
 PLAN AND PROFILE
 WORK AREA 1**

ISSUED FOR:	
PERMIT	-
BID	-
CONSTRUCTION	-
RECORD	-

JOB NO.
2019330

SHEET:
C-407

SHEET NO.
SHEET 23/29



FOR RIVER CROSS SECTIONS, SEE SHEETS 24-28.

RESTORATION KEYNOTES

- ① GRADE CONTROL FEATURE (SEE SHEET 29)
- ② ABANDONED STORM OUTFALL; CONFIRM AND SEAL OFF. ACTIVE STORM OUTFALL SHALL BE EXTENDED WITH NEW END TREATMENT.
- ③ PROPOSED BANK STABILIZATION RESTORATION.

