

WELCOME TO TODAY'S PUBLIC MEETING

Shenango River Lake

Master Plan Public Scoping Meeting



US Army Corps
of Engineers®

June 29, 2022



WHILE WE'RE WAITING TO BEGIN...



**In one sentence,
What do you enjoy most about Shenango River Lake?**

Type your thoughts to 'EVERYONE' in the Chat Box .

Open the chat feature by clicking this button.

Mute

Start video

Share

Record

...



Participants

Chat

...

WELCOME TO TODAY'S PUBLIC MEETING

Shenango River Lake

Master Plan Public Scoping Meeting



US Army Corps
of Engineers®

June 29, 2022



WHAT YOU CAN DO TODAY

The Pittsburgh District is beginning the process of revising Shenango River Lake Master Plan (MP).



Today you can:

- Learn about the Master Plan revision process and what kind of input we're looking to collect from you
- Ask questions of our staff
- Become familiar with the avenues we are providing to collect your input
- But most importantly... you can tell us what you think!



WE'D LIKE TO LEARN FROM YOU:



- Your **VISION** for Shenango River Lake
- The **OPPORTUNITIES** you'd like to see realized (or not see)
 - Recreational (e.g. camping, hiking trails, disc golf, etc.)
 - Environmental (e.g. hunting and fishing opportunities, pollinator plots, land management initiatives)
 - Safety (e.g. call stations, improved signage for dangerous areas, deconflicting uses of the reservoir lands)
 - Cultural/Historical (e.g. protection of a historical site)
- The **CHANGES** you'd like to see to the management of the resources
- Recommendations for how to address the major **CONCERNS** you have about Shenango River Lake's environmental and recreational future
- **LOCAL/REGIONAL NEEDS OR PLANS** that we should be aware of and take into consideration as we're creating this plan

To note: The MP does *not* address the specifics of regional **water quality**, **shoreline management**, or **water level management**

You can use your **NOTES section in the WebEx** to capture your thoughts (for the moment)!



SHENANGO PROJECT STAFF



BILL SPRING
Resource Manager



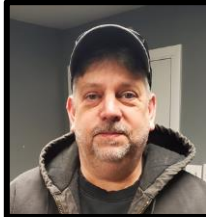
BRYON FOX
Lake Project Assistant



DAN BAILEY
Maintenance



AARON HAFLICH
Lead Park Ranger



JOE KENNEDY
Maintenance Leader



TREVOR SCHULLER
Student Ranger



MATTHEW POOK
Park Ranger



BRIAN SERAFIN
Maintenance



REILLY FRABLE
Student Ranger



HANNAH SMITH
Park Ranger



ADAM RENTZ
Maintenance



ALLISON PHILBRICK
Student Ranger



HANNAH KEPPLER
Park Ranger



JESSE PALMER
Maintenance



GARRICK EVANS
Student Ranger



INTRODUCTIONS



Evan Skornick
Operations Project Manager



Heather Wood
Natural Resource Specialist
Master Plan Lead



Andrea Carson
Public Involvement Specialist
Moderator



TONIGHT'S AGENDA



Welcome and Opening Remarks

(15 min) Shenango River Lake Master Plan Process

(5 min) Instructions for Breakout Rooms

(25 min) Breakout Room #1

(25 min) Breakout Room #2

7:30 Meeting Concludes

Andrea Carson

Host, me



Unmute Start video Share Record ...

Participants (1)

Test Subject #1 (Not si... is waiting in the lobby. Admit X

Search

AC Andrea Carson Host, me

Mute all Unmute all ...

Chat

from Andrea Carson to everyone: 9:36 AM
Good evening everyone, thank you for joining.

I

To: Everyone

Enter chat message here



Participants Chat ...



IN CASE YOU'RE JUST JOINING US...



**In one sentence,
What do you enjoy most about Shenango River Lake?**

Type your thoughts to 'EVERYONE' in the Chat Box .

Open the chat feature by clicking this button.



MASTER PLAN PROCESS

Heather Wood
Natural Resource Specialist
Master Plan Lead



US Army Corps
of Engineers®



WHY REVISE?

- The Shenango River Lake Master Plan was last updated in 1998, 24 years ago
- An approved Master Plan is necessary before any new development, construction, consolidation, or land use change can be pursued
- Master Plans need to reflect most current local/regional/national changes



MASTER PLAN OVERVIEW



- Overall *land use management plan*
- Guides comprehensive *management and development* of:
 - Recreation
 - Natural
 - Cultural resources
- Projects what could and should happen over the life of the project but remains flexible based on changing conditions
- Provides *authority*, not *funding*
- Covers *activities* on project lands and waters, not *physical operation* of dam
- Discusses *broad management*, does not focus on facility *design details* or daily project operation
- Does *not* address the specifics of regional **water quality**, **shoreline management**, or **water level management**



MASTER PLAN OVERVIEW



- Examines environmental, recreational, and socioeconomic *trends*



Answers these questions:

- What are the regional ecosystem needs?
- What are the project resource capabilities and suitability?
- Is public interest compatible with project purposes?



MASTER PLAN CONTENT



- Introduction
- Resource Objectives
- Project Setting and Factors
 - Threatened and Endangered Species
 - Invasive Species
 - Water Quality and Sedimentation
 - Demographics and Economics
- Land Classifications
- Best Management Practices
- Special Considerations
- Agency and Public Coordination
- Summary
- Environmental Assessment



RESOURCE OBJECTIVES



- Goals reflecting desired current or future conditions for resources (measurable and attainable)
 - Compatible with Corps principles and regulations, relevant state and federal natural resource action plans, and applicable laws
1. Use sound environmental principles to protect and enhance public lands
 2. Cultivate volunteers, public-private partnerships, and apply for grants
 3. Provide safe and memorable connections, as part of multiple destination points
 4. Leverage emerging technology to tell the Corps' story and enhance visitor experiences



LAND CLASSIFICATIONS – WHAT ARE THEY?



Project Operations

Lands used solely for the operation of the project such as the dam, spillway, offices, dikes, levees, maintenance facilities, etc.

High Density Recreation

Lands used for intensive recreation use such as busy day-use areas and campgrounds

Environmentally Sensitive Areas

Lands where ecological, cultural, or aesthetic resources have been identified such as wetlands, cultural resource sites, mature woodlands, etc.

Low Density Recreation

Lands with minimal development or infrastructure that support passive public recreation such as primitive camping, hiking trails, wildlife viewing areas, etc.

Wildlife Management Areas

Lands developed for stewardship of fish and wildlife resources



LAND CLASSIFICATIONS – WHAT ARE THEY?



Mitigation

Lands acquired for offsetting losses associated with the development of the project

Vegetative Management

Lands designated for stewardship of forest, prairie, and other native vegetative cover

Future or Inactive Recreation Areas

Potential future recreational development areas or recreation areas that are closed



WATER SURFACE CLASSIFICATIONS – WHAT ARE THEY?



Restricted

Water areas restricted for project operations, safety, or security purposes

Designated No-Wake

To protect environmentally sensitive shoreline areas, recreational water access areas from disturbance, and for public safety

Open Recreation

Waters available for year-round or seasonal water-based recreation use

Fish and Wildlife Sanctuary

Annual or seasonal restrictions on areas to protect fish and wildlife species during periods of migration, resting, feeding, nesting, and/or spawning



SPECIAL CONSIDERATIONS



Depends on the specifics of the project. Could likely include:

- Oil, gas and coal development
- Invasive species
- Endangered species
- Climate change
- Motorized vehicles
- Unmanned aircrafts



NATIONAL ENVIRONMENTAL POLICY ACT ENVIRONMENTAL ASSESSMENT



- NEPA ensures that environmental factors are weighed equally in the decision-making process for federal actions and lets the public know and comment on proposed federal actions
- Environmental Assessment
 - Provides decision makers with complete information on environmental impacts to decide if the proposal is worth moving forward
 - Shows the positive and negative of a plan
- Following the scoping phase for the MP, we will work to prepare a draft for an updated MP and create an Environmental Assessment (EA) to evaluate the potential environmental and social effects of proposed changes to the MP.

OPTIONS FOR PROVIDING INPUT



US Army Corps
of Engineers®



WE'D LIKE TO LEARN FROM YOU:

- Your **VISION** for Shenango River Lake
- The **OPPORTUNITIES** you'd like to see realized (or not see)
 - Recreational (e.g. camping, hiking trails, disc golf, etc.)
 - Environmental (e.g. hunting and fishing opportunities, pollinator plots, land management initiatives)
 - Safety (e.g. call stations, improved signage for dangerous areas, deconflicting uses of the reservoir lands)
 - Cultural/Historical (e.g. protection of a historical site)
- The **CHANGES** you'd like to see to the management of the resources
- Recommendations for how to address the major **CONCERNS** you have about Shenango River Lake's environmental and recreational future
- **LOCAL/REGIONAL NEEDS OR PLANS** that we should be aware of and take into consideration as we're creating this plan

To note: The MP does *not* address the specifics of regional **water quality**, **shoreline management**, or **water level management**



HOW TO PROVIDE INPUT



Want to submit a comment during the webinar?

- We'll be collecting your input momentarily in our breakout rooms.

Have a great thought after the meeting?

- Email ShenangoRiverLake@gmail.com with the subject line "Shenango River Lake Public Scoping Comments"
- Mail (or stop by) in your comment: 2442 Kelly Road, Hermitage, PA 16148
- Message us on Facebook at:
<https://m.facebook.com/ShenangoLakeUSACE>
- Submit a comment online using our Crowdsource Reporter Tool on the website:
<https://lrp.maps.arcgis.com/apps/CrowdsourceReporter/index.html?appid=fedda806795049f2981c3347d64bd60e>

Please submit your comments by Friday, July 29, 2022



ONLINE PUBLIC COMMENT TOOL



Shenango River Lake - Public Comment Tool

1. Click here for cultural/historic
2. Click here for environmental comments
3. Click here for recreation comments
4. Click here for safety/emergency
5. Or, click here for any other comments

Legend

- Cultural/Historical Resources Comment
- Corps Boundary

How best to use the tool?

1) Click the link provided on the website and in the chat box.

2) Click on the button for the topic of comment that best fits your need.

- Safety/Emergency Management
- Environmental
- Recreation
- Cultural/Historical
- Other

3) Zoom in on the map to the area around the reservoir. Click the legend symbol to understand what each of the colored sections on the map indicate.



ONLINE PUBLIC COMMENT TOOL



< Safety/Emergency Management Comment

+ Click to Start a Comment

No features found

Comment Details

Comment Type (required)
Select...

Name (Optional)

Zip Code (required)

Email address (Optional)

Comment (required)

Location
Click the map to draw the location

How best to use the tool?

4) To submit a comment, click the red "Click to Start a Comment" button and fill out the information requested.

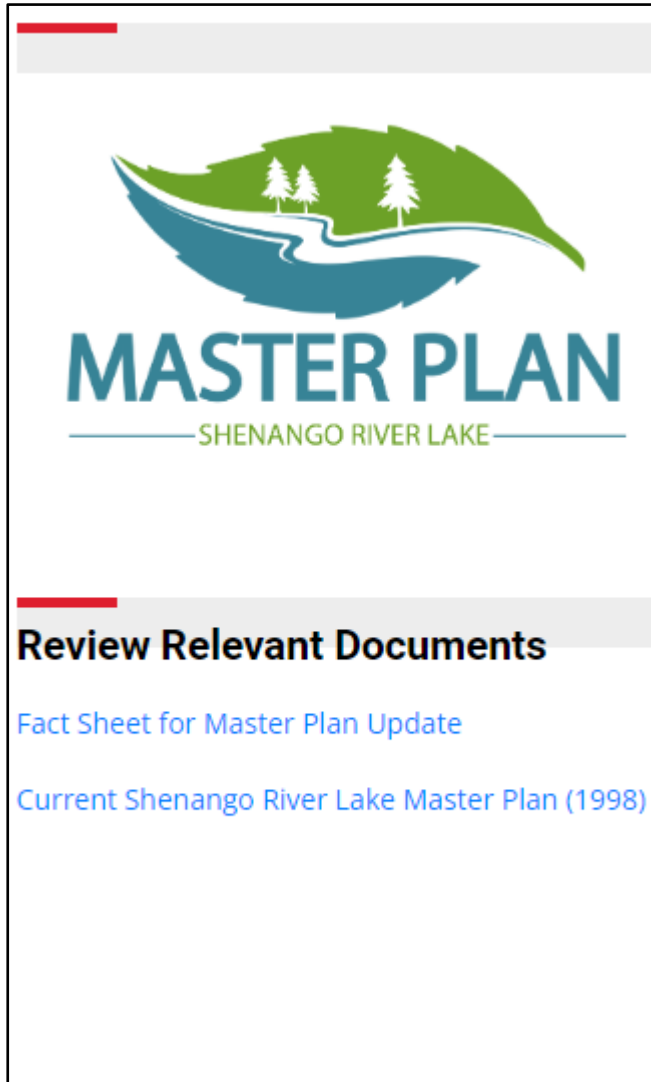
You can leave a Concern, Question, or New Idea/Opportunity for Improvement.

If your comment is location-specific, the tool will ask you to click on the location your comment refers to.

5) You will also be able to see other comments submitted. You can choose to like or comment on those comments as well.



WHERE CAN YOU FIND ADDITIONAL INFORMATION?



On the Pittsburgh District Website:

<https://www.lrp.usace.army.mil/Missions/Recreation/Lakes/Shenango-River-Lake/Shenango-River-Lake-Master-Plan/>

OR

At the Shenango River Lake Office:

2442 Kelly Road, Hermitage, PA 16148

BREAKOUT SESSIONS



Main Room – Phone Only Participants
Room 1 – Safety/Recreation/Other
Room 2 – Environmental/Cultural
Resources



US Army Corps
of Engineers®

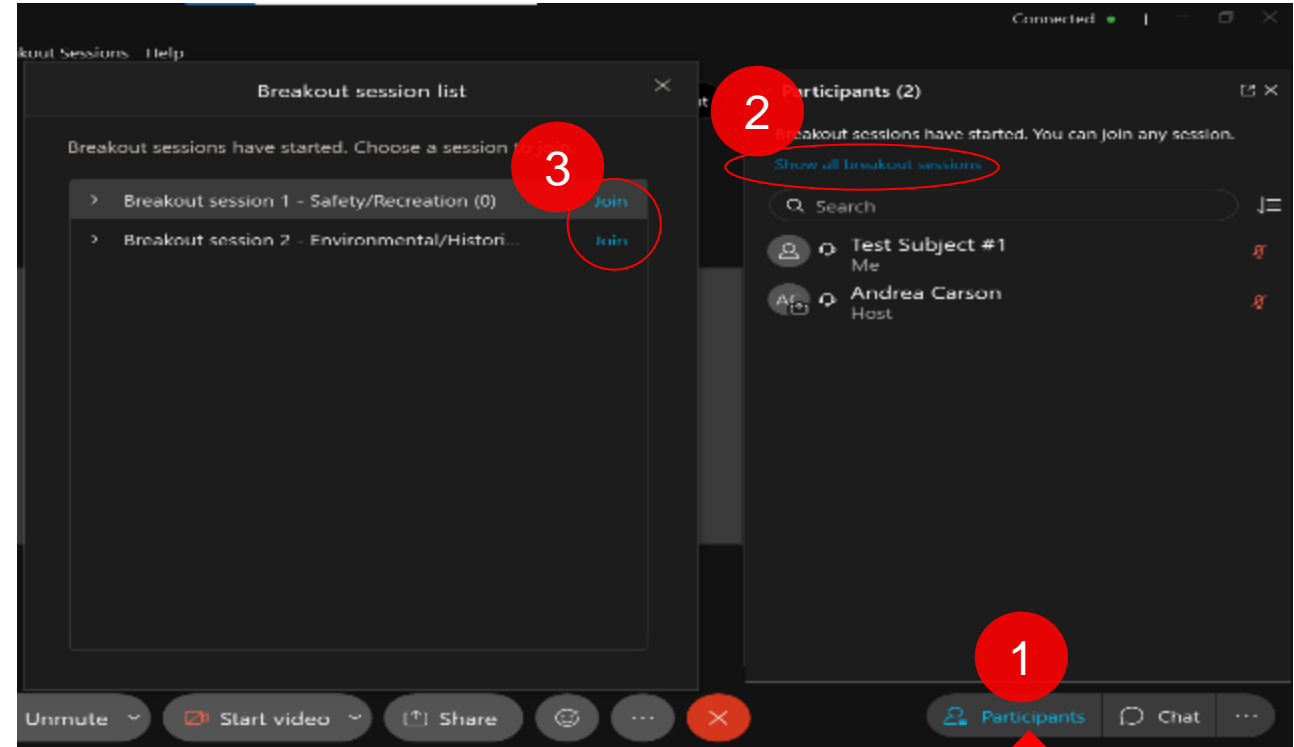


BREAKOUT SESSIONS: HOW TO PROVIDE INPUT



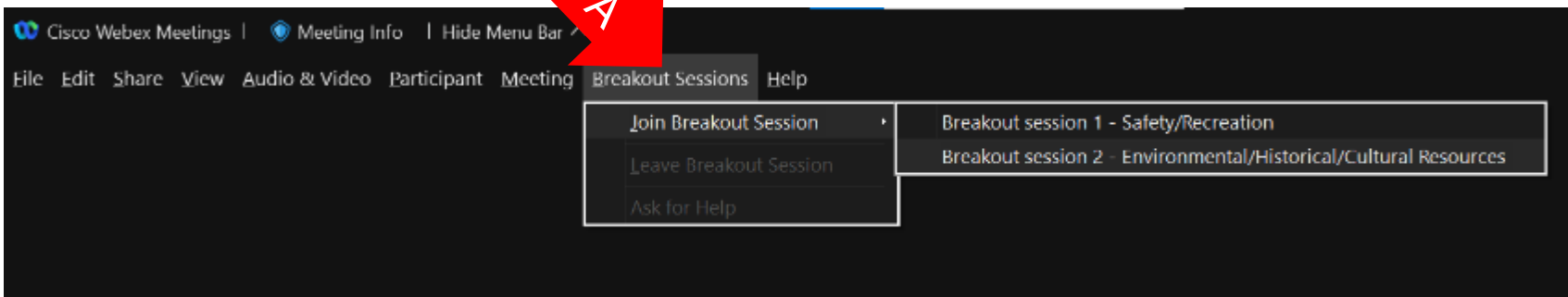
Ready to provide your input?

1. For the next 50 minutes, you will be able to join breakout rooms.
2. You will be able to select which breakout room you would like to enter first:
 - 1 - Safety/Recreation
 - 2 - Environmental/Cultural/Historical Resources
 - Main Room - If you're on the phone
(Please note at any time you can switch rooms)



Option A

Option B



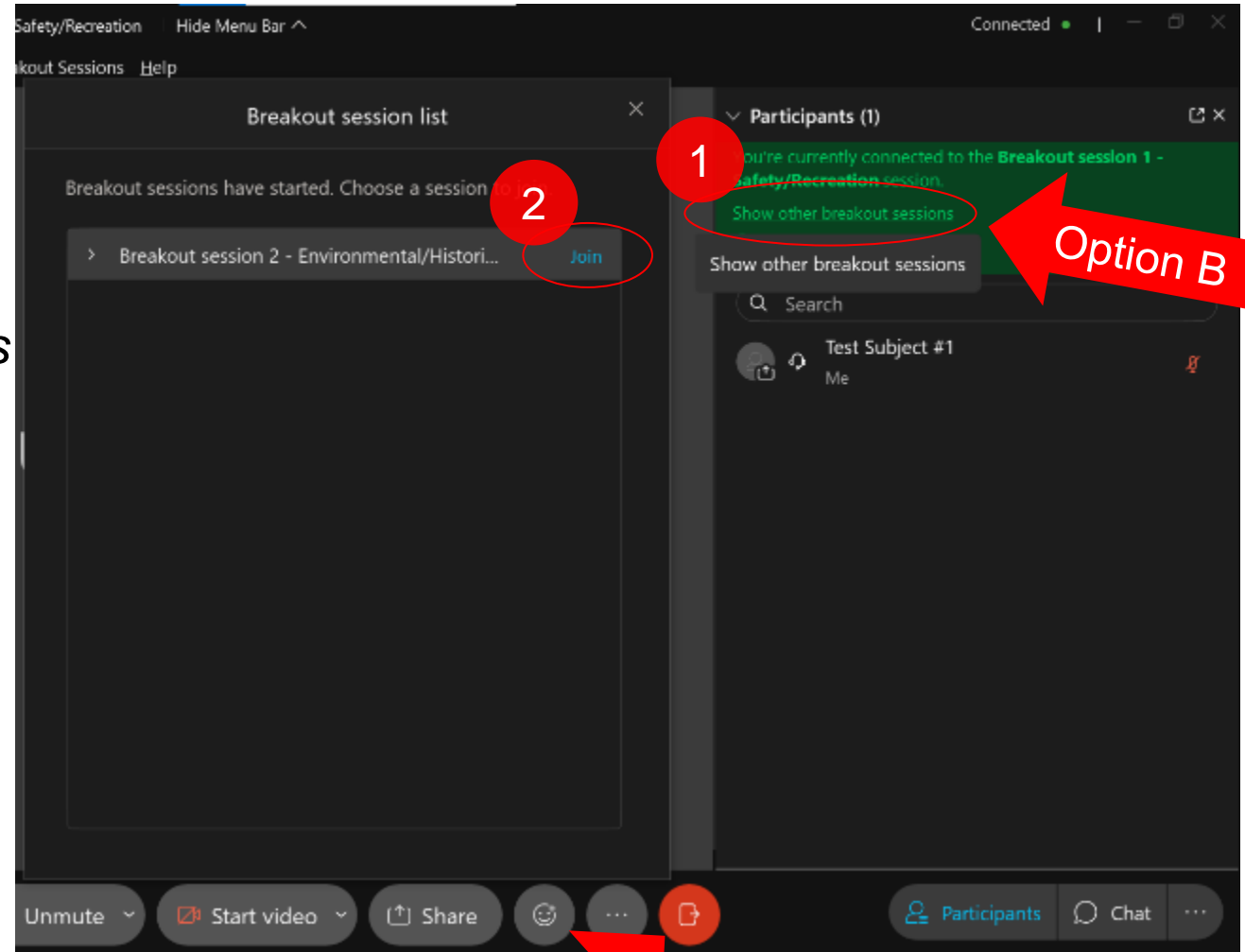


BREAKOUT SESSIONS: HOW TO PROVIDE INPUT



Ready to provide your input?

3. In each room,
 - 10 minutes – Q&A
 - 15 minutes – Capturing Input
 - *OR you can listen to what others have to say*
 - 25 minutes – New Q&A session
 - If you'd like to hear Q&A on the other topics, select the other breakout room
 - You can also choose to stay in the room you're in or leave at any time
4. Remember two key principles –
 - We're brainstorming, not evaluating (each others' opinions).
 - We want to give each person time to talk.





HOW TO PROVIDE INPUT



Have a great thought after the meeting?

- Email ShenangoRiverLake@gmail.com with the subject line “Shenango River Lake Public Scoping Comments”
- Message us on Facebook at:
<https://m.facebook.com/ShenangoLakeUSACE>
- Submit a comment online using our Public Comment Tool :
<https://lrp.maps.arcgis.com/apps/CrowdsourceReporter/index.html?appid=fedda806795049f2981c3347d64bd60e>
- Mail in your comment:
 - 2442 Kelly Road, Hermitage, PA 16148
- Visit the Lake!
 - Shenango Recreation Area Kiosk (492 West Lake Road, Transfer, PA 16154)
 - Mahaney Recreation Area Kiosk (2442 Kelly Road, Hermitage, PA 16148)



Please submit your comments by Friday, July 29, 2022



SHENANGO RIVER LAKE CONTACTS



Bill Spring

Resource Manager
Shenango River Lake
(724) 962-7746 (Office)

Thank you for your time!

Ranger Station

Shenango River Lake
(724) 646-1124 (Office)

BREAKOUT SESSIONS



Main Room – Phone Only Participants
Room 1 – Safety/Recreation/Other
Room 2 – Environmental/Cultural
Resources



US Army Corps
of Engineers®



HOW TO PROVIDE INPUT



Have a great thought after the meeting?

- Email ShenangoRiverLake@gmail.com with the subject line “Shenango River Lake Public Scoping Comments”
- Message us on Facebook at:
<https://m.facebook.com/ShenangoLakeUSACE>
- Submit a comment online using our Public Comment Tool :
<https://lrp.maps.arcgis.com/apps/CrowdsourcingReporter/index.html?appid=fedda806795049f2981c3347d64bd60e>
- Mail in your comment:
 - 2442 Kelly Road, Hermitage, PA 16148
- Visit the Lake!
 - Shenango Recreation Area Kiosk (492 West Lake Road, Transfer, PA 16154)
 - Mahaney Recreation Area Kiosk (2442 Kelly Road, Hermitage, PA 16148)



Please submit your comments by Friday, July 29, 2022



SHENANGO RIVER LAKE CONTACTS



Bill Spring

Resource Manager
Shenango River Lake
(724) 962-7746 (Office)

Thank you for your time!

Ranger Station

Shenango River Lake
(724) 646-1124 (Office)