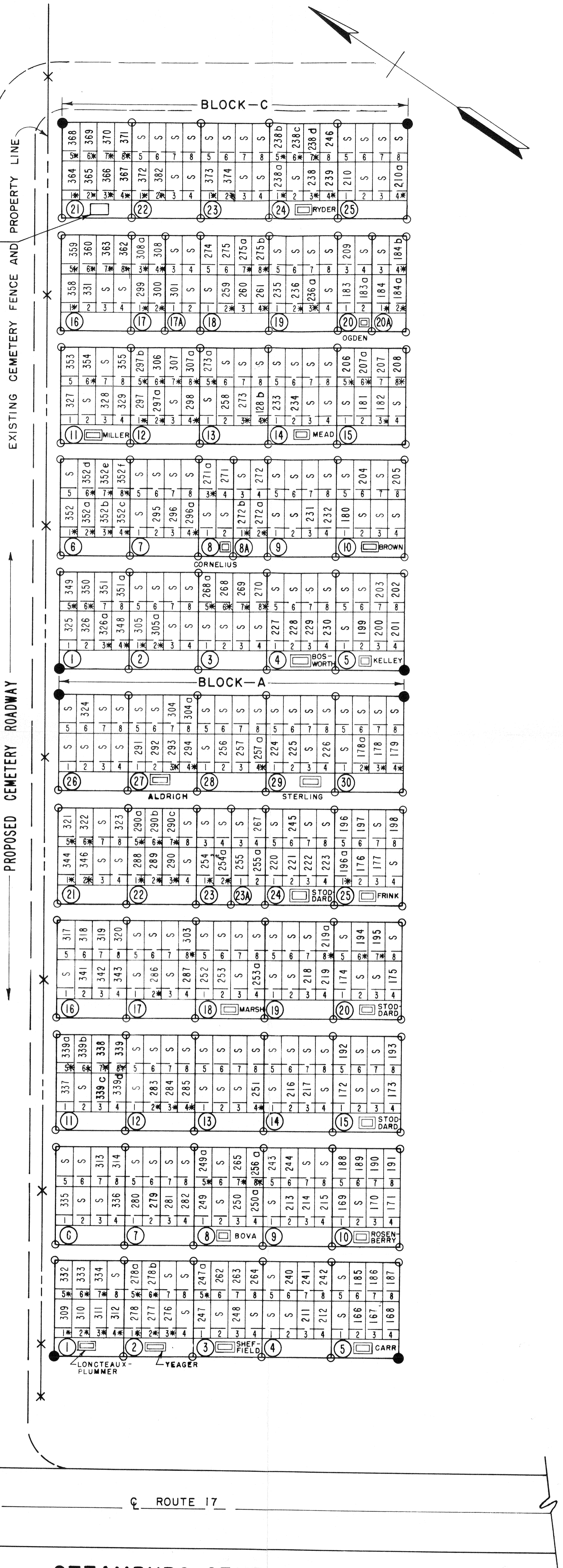


(A)
ALUMINUM IDENTIFICATION PLAQUE
INSCRIBED WITH 7 NAMES:
LESTER BULL
ALFRED FOX
FRED GODFREY
ROBINSON
VIRGIL THOMAS
MRS. LEVI O. ZENKERINE
LEVI O. ZENKERINE



STEAMBURG CEMETERY
REINTERMENT SITE
SECTION - I
PLAN
NO SCALE

SECTION	BLOCK	LOT	SPACE	NAME OF INTERED
I A	1	1		NELLIE PLUMMER
I A	1	2		MILO PLUMMER
I A	1	3		LOUISE LONGTEAUX
I A	1	4		EARL LONGTEAUX
I A	1	5		ROLLO PLUMMER
I A	1	6		VIGOR PLUMMER
I A	1	7		SIMON LONGTEAUX
I A	1	8		
I A	2	1		RALPH A. YEAGER
I A	2	2		JOHN B. YEAGER
I A	2	3		MINA MAUDE YEAGER
I A	2	4		
I A	2	5		MRS. CHARLES YEAGER
I A	2	6		CHARLES YEAGER
I A	2	7		
I A	2	8		
I A	3	1		ELIZA DECKER
I A	3	2		
I A	3	3		GEORGE DECKER
I A	3	4		
I A	3	5		ROBERT L. EATON
I A	3	6		ADELAIDE E. ARMSTRONG
I A	3	7		EMUIE C. SHEFFIELD
I A	3	8		ALBERT SHEFFIELD
I A	4	1		
I A	4	2		
I A	4	3		ALMIRA CARR
I A	4	4		STEPHEN CARR
I A	4	5		
I A	4	6		LOUISE ELMORA CARR
I A	4	7		MARION CARR
I A	4	8		ELINOR CARR
I A	5	1		HOWARD CARR
I A	5	2		OLINDA CARR
I A	5	3		EMMA W. CONRAD
I A	5	4		
I A	5	5		J. HOMER CARR
I A	5	6		LILLIAN IRENE CARR
I A	5	7		ELIZABETH D. CARR
I A	6	1		PHILA KIDDER
I A	6	2		
I A	6	3		WM. MARSH
I A	6	4		ROSETTA MARSH
I A	6	5		
I A	6	6		VERN MARSH
I A	6	7		
I A	6	8		
I A	7	1		PHOEBE M. HART
I A	7	2		MATHEW B. HART
I A	7	3		FRANCES A. HUBBARD
I A	7	4		MARVIN T. HUBBARD
I A	7	5		GEORGE HUBBARD
I A	7	6		SADIE C. HUBBARD
I A	7	7		
I A	7	8		
I A	8	1		LEWIS A. BOVA
I A	8	2		
I A	8	3		ALICE BOVA
I A	8	4		JOSEPH BOVA
I A	8	5		CLARENCE H. BOVA
I A	8	6		
I A	8	7		ALBERT BOVA
I A	8	8		ANSON D. BOVA
I A	9	1		
I A	9	2		CAROLINE HERTEL
I A	9	3		HENRY HERTEL
I A	9	4		RAYMOND R. DURPHY
I A	9	5		HENRY HERTEL
I A	9	6		REBECCA HERTEL
I A	9	7		
I A	9	8		
I A	10	1		HAZEL ROSENBERY
I A	10	2		
I A	10	3		JAMES F. ROSENBERY
I A	10	4		ALICE M. ROSENBERY
I A	10	5		JAMES ROSENBERY
I A	10	6		THOMAS ROSENBERY
I A	10	7		CHARLOTTE L. ROSENBERY
I A	10	8		SARAH ROSENBERY
I A	11	1		ERWIN J. WEAGRAFF
I A	11	2		
I A	11	3		JOHN C. WEAGRAFF
I A	11	4		FRANCES L. WEAGRAFF
I A	11	5		"INFANT" WEAGRAFF
I A	11	6		"INFANT" WEAGRAFF
I A	11	7		CHRISTOPHER MITZ
I A	11	8		
I A	12	1		
I A	12	2		FRANK BANKS
I A	12	3		MRS. WILLIAM BANKS
I A	12	4		WILLIAM BANKS
I A	12	5		
I A	12	6		
I A	12	7		
I A	12	8		

SECTION	BLOCK	LOT	SPACE	NAME OF INTERED
I A	13	1		
I A	13	2		
I A	13	3		
I A	13	4		
I A	13	5		MRS. GEORGE WELLEN
I A	13	6		
I A	13	7		
I A	13	8		
I A	14	1		
I A	14	2		SARAH DUNBAR
I A	14	3		SYLVESTER V. DUNBAR
I A	14	4		
I A	14	5		
I A	14	6		
I A	14	7		
I A	14	8		
I A	15	1		ROBERT STODDARD
I A	15	2		
I A	15	3		
I A	15	4		MARY ANN STODDARD
I A	15	5		ELLA ALDRICH
I A	15	6		
I A	15	7		
I A	15	8		MYRTLE B. JOHNSON
I A	16	1		
I A	16	2		PEARL J. LEWIS
I A	16	3		CELIA HUGHES
I A	16	4		ROBY STIMSON
I A	16	5		ALBERT FRANCE
I A	16	6		MARY FRANCE
I A	16	7		DEVILLO FRANCE
I A	16	8		IDA L. FRANCE
I A	17	1		
I A	17	2		ALBERT F. BOVA
I A	17	3		
I A	17	4		DANIEL FRINK
I A	17	5		
I A	17	6		
I A	17	7		
I A	17	8		WILLARD J. BEAN
I A	18	1		WM. MARSH
I A	18	2		ROSETTA MARSH
I A	18	3		
I A	18	4		VERN MARSH
I A	18	5		
I A	18	6		
I A	18	7		
I A	18	8		
I A	19	1		
I A	19	2		
I A	19	3		AMELIZA BROWN
I A	19	4		THOMAS BROWN
I A	19	5		
I A	19	6		
I A	19	7		
I A	19	8		
I A	20	1		"INFANT" GOODRICH
I A	20	2		MARY L. STODDARD
I A	20	3		
I A	20	4		MARSHALL STODDARD
I A	20	5		
I A	20	6		JASON BENNETT
I A	20	7		HETTIE BENNETT
I A	20	8		
I A	21	1		DELBERT REMINGTON
I A	21	2		PEARL REMINGTON
I A	21	3		
I A	21	4		
I A	21	5		W.W. REMINGTON
I A	21	6		EMMA REMINGTON
I A	21	7		
I A	21	8		
I A	22	1		THEODORE KRECKO
I A	22	2		MRS. JOHN KRECKO
I A	22	3		JOHN KRECKO
I A	22	4		
I A	22	5		UNKNOWN
I A	22	6		UNKNOWN
I A	22	7		UNKNOWN
I A	22	8		UNKNOWN
I A	23	1		MARY ANN MURRAY
I A	23	2		MRS. BURT ABBEY
I A	23	3		
I A	23	4		
I A	23A	1		PETER S. RHODES
I A	23A	2		MARY RHODES
I A	23A	3		
I A	24	1		WALTER J. BROWN
I A	24	2		CALVIN STODDARD
I A	24	3		GILES STODDARD
I A	24	4		SARAH N. STODDARD
I A	24	5		MARY ANN STODDARD
I A	24	6		
I A	24	7		WALTER G. STODDARD

SECTION	BLOCK	LOT	SPACE	NAME OF INTERED
I A	24	7		
I A	24	8		
I A	25	1		"INFANT" FRINK
I A	25	2		JAMES D. FRINK
I A	25	3		JANE FRINK
I A	25	4		"INFANT" FRINK
I A	25	5		HARRY W. HALE
I A	25	6		
I A	25	7		
I A	25	8		WILLIAM A. FRINK
I A	26	1		
I A	26	2		
I A	26	3		
I A	26	4		
I A	26	5		
I A	26	6		MINNIE FRINK
I A	26	7		
I A	26	8		
I A	27	1		CHARLES S. ALDRICH
I A	27	2		LOTTIE ALDRICH
I A	27	3		MRS. JOHN ZEIGLER
I A	27	4		JOHN ZEIGLER
I A	27	5		
I A	27	6		
I A	27	7		LITTLE EVA ALDRICH
I A	27	8		"INFANT" ORVILLE ALDRICH
I A	28	1		
I A	28	2		MARY HEIDELL
I A	28	3		HENRY HEIDELL
I A	28	4		WALTER H. HEIDELL
I A	28	5		
I A	28	6		
I A	28	7		
I A	28	8		
I A	29	1		CLARA A. STERLING
I A	29	2		CHARLES A. STERLING
I A	29	3		
I A	29	4		BERTHA MESSINGHAM STERLING
I A	29	5		
I A	29	6		
I A	29	7		
I A	29	8		
I A	30	1		EDWARD BUSBEE WOULD
I A	30	2		ELLS ESTELLE WOULD
I A	30	3		EMMA L. WOULD
I A	30	4		
I A	30	5		
I A	30	6		
I A	30	7		
I A	30	8		
I C	1	1		KATE BURNSIDE
I C	1	2		PHOEBE COOPER
I C	1	3		HENRY COOPER
I C	1	4		MRS. CHARLES BURNSIDE
I C	1	5		CHARLES BURNSIDE
I C	1	6		JAMES BURNSIDE
I C	1	7		MELVINA BURNSIDE
I C	1	8		JAMES BURNSIDE
I C	2	1		A. P. HALLOCK
I C	2	2		MRS. A. P. HALLOCK
I C	2	3		
I C	2	4		
I C	2	5		
I C	2	6		
I C	2	7		
I C	2	8		
I C	3	1		
I C	3	2		
I C	3	3		
I C	3	4		
I C	3	5		
I C	3	6		
I C	3	7		
I C	3	8		
I C	4	1		MARIAN HALLOCK
I C	4	2		FRANCIS M. HALLOCK
I C	4	3		LILLIAN AGNES HALLOCK
I C	4	4		EMMETT LEON HALLOCK
I C	4	5		FRANK H. BOSWORTH
I C	4	6		MARY BOSWORTH
I C	4	7		CLARK W. BOSWORTH
I C	4	8		SUSAN S. BOSWORTH
I C	5	1		
I C	5	2		
I C	5	3		
I C	5	4		
I C	5	5		
I C	5	6		
I C	5	7		
I C	5	8		
I C	5	9		
I C	5	10		
I C	5	11		
I C	5	12		
I C	5	13		
I C	5	14		
I C	5	15		
I C	5	16		
I C	5	17		
I C	5	18		
I C	5	19		
I C	5	20		
I C	5	21		
I C	5	22		
I C	5	23		
I C	5	24		
I C	5	25		
I C	5	26		
I C	5	27		
I C	5	28		
I C	5	29		
I C	5	30		
I C	5	31		
I C	5	32		
I C	5	33		
I C	5	34		
I C	5	35		
I C	5	36		
I C	5	37		
I C	5	38		
I C	5	39		
I C	5	40		
I C	5	41		
I C	5	42		
I C	5	43		
I C	5	44		
I C	5	45		
I C	5	46		
I C	5	47		
I C	5	48		
I C	5	49		
I C	5	50		
I C	5	51		
I C	5	52		
I C	5	53		
I C	5	54		
I C	5	55		
I C	5	56		
I C	5	57		
I C	5	58		
I C	5	59		
I C	5	60		

SECTION	BLOCK	LOT	SPACE	NAME OF INTERED
I C	6	1		MRS. WILLIAM CLARK
I C	6	2		WILLIAM CLARK
I C	6	3	</	