



# South Dakota GOED Infrastructure First Project

January 24, 2023

# Partner Relations Team



Joe Fiala  
Director



Adam Molseed  
Southeastern  
Region  
Representative



Hannah Sage  
Western Region  
Representative



Laure Swanson  
Northeastern  
Region  
Representative

# Infrastructure First Project Overview

- 1** Develop Statewide Economic Development Plan  
*Topic of today's webinar*
- 2** Identify Sixteen Ideal Sites Within South Dakota  
*Topic of today's webinar*
- 3** Create A Five-Year Capital Improvement Plan for Sixteen Communities  
*January 10th webinar  
January 25th Application*



Architecture  
Engineering  
Environmental  
Planning

# Statewide Infrastructure Planning & Identification of the 16 Best Sites for Economic Development

# True Expertise + Working Ingenuity



**Steve Watson**  
*Development Strategist*



**Will Kratt, PE, PTOE**  
*Transportation Business  
Unit Leader*



**Tiara Marcus**  
*Project Manager*

# Statewide Infrastructure Planning

- **Develop a statewide economic development plan focused on infrastructure**
  - Consider existing local, regional, and tribal economic development plans/strategies
  - Plan will identify strengths, weaknesses and opportunities related to:
    - *Water*
    - *Wastewater*
    - *Natural Gas*
    - *Electric*
    - *Rail*
    - *Major Roadways*
    - *Broadband Internet*

# Statewide Infrastructure Planning

- Overview of the current system within South Dakota
- Understanding of the capacity and constraints of the system
- Identification of the potential solutions and projects that will set the stage for economic growth

# Statewide Infrastructure Planning

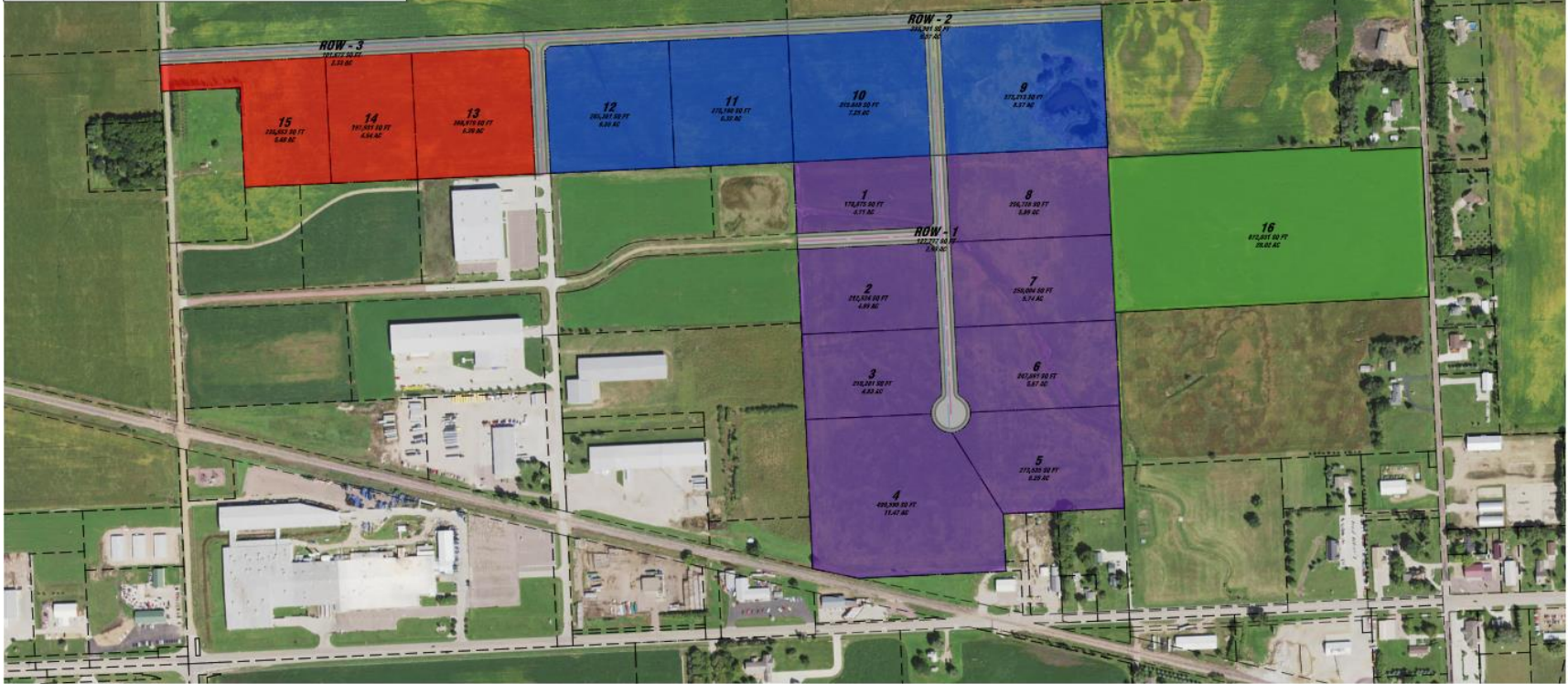
- **Will require collaboration from, at minimum, the following:**
  - SD GOED
  - SD DANR
  - SD BIT
  - SDDOT
  - PUC
  - Electric Utilities
  - Natural Gas Utilities
  - Planning Districts
  - EDOs
  - Others



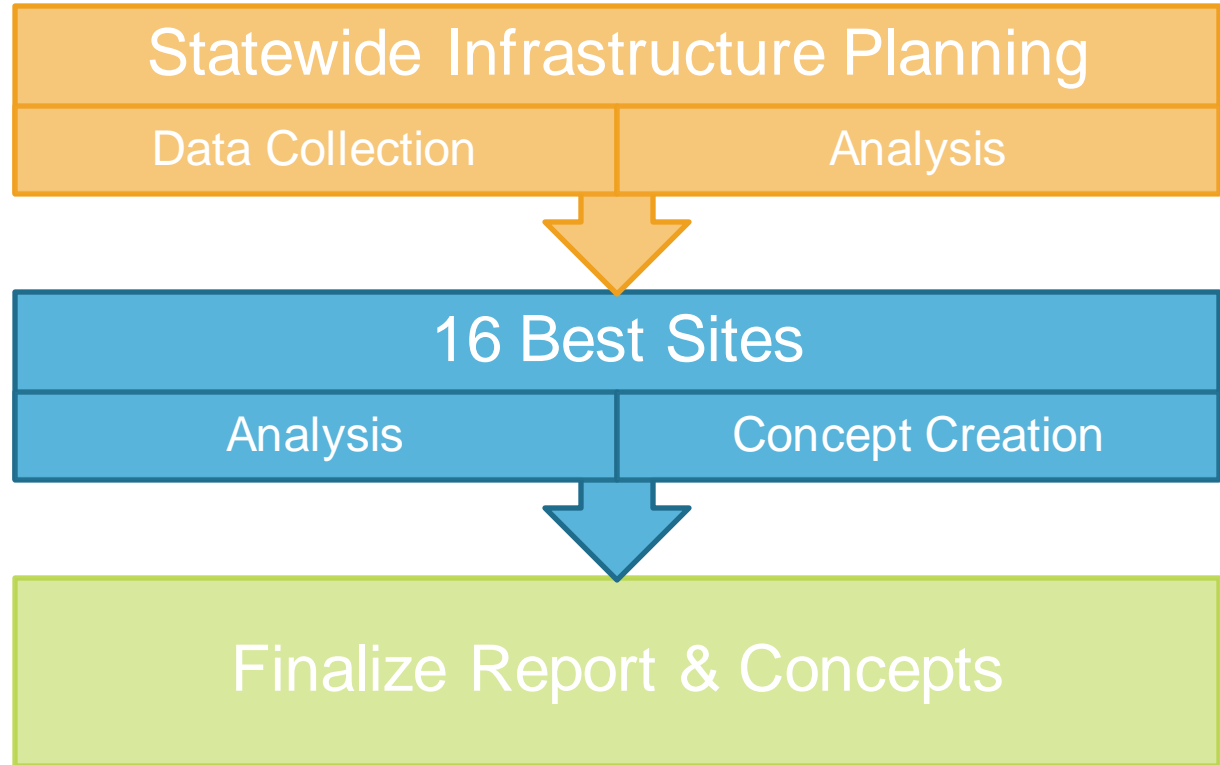
# Identification of the 16 Best Sites

- Utilize data driven process to identify the 16 Best Agribusiness/Industrial Development Sites in South Dakota
- Site selection will be broken down by the following:
  - 2 sites in each of the 6 planning districts (including non-members)
  - 4 additional regardless of geography
- The following criteria will be used to identify the sites:
  - Current, Future Planned Utility Capabilities
  - Transportation Infrastructure
  - Workforce Dynamics
  - Availability of Raw Materials
    - (i.e. commodities, minerals)
  - Synergistic Industries
    - (i.e. by-products, utility take off capabilities like excess steam)

PARCEL TABLE - PHASE 1			PARCEL TABLE - PHASE 2			PARCEL TABLE - PHASE 3		
LOT	(SQ. FT.)	(AC.)	LOT	(SQ. FT.)	(AC.)	LOT	(SQ. FT.)	(AC.)
ROW-1	127,774.66	2.89	8	373,213.57	8.57	13	246,874.58	5.62
1	178,873.55	4.11	10	315,818.00	7.22	14	187,831.55	4.34
2	273,222.81	6.24	11	275,192.74	6.32	15	235,222.81	5.42
3	273,222.81	6.24	12	245,541.51	5.63	ROW-2	121,671.44	2.80
4	189,248.91	4.37	ROW-3	222,491.04	5.12			
5	273,222.81	6.24						
6	127,021.07	2.91						
7	232,022.81	5.35						
8	224,754.12	5.14						



# What's Next?





# Q&A

# Contact Information

ADAM MOLSEED (SOUTHEASTERN)  
605.940.3403 | [adam.molseed@sdgoed.com](mailto:adam.molseed@sdgoed.com)

HANNAH SAGE (WESTERN)  
605.381.4225 | [hannah.sage@sdgoed.com](mailto:hannah.sage@sdgoed.com)

LAURE SWANSON (NORTHEASTERN)  
605.280.6299 | [laure.swanson@sdgoed.com](mailto:laure.swanson@sdgoed.com)

\* Additional information may be found on GOEDs website:

[sdgoed.com/partners/infrastructure-first-project/](http://sdgoed.com/partners/infrastructure-first-project/)



*If you have any further comments, questions, or concerns, please contact your designated GOED Representative.*

*Thank you.*