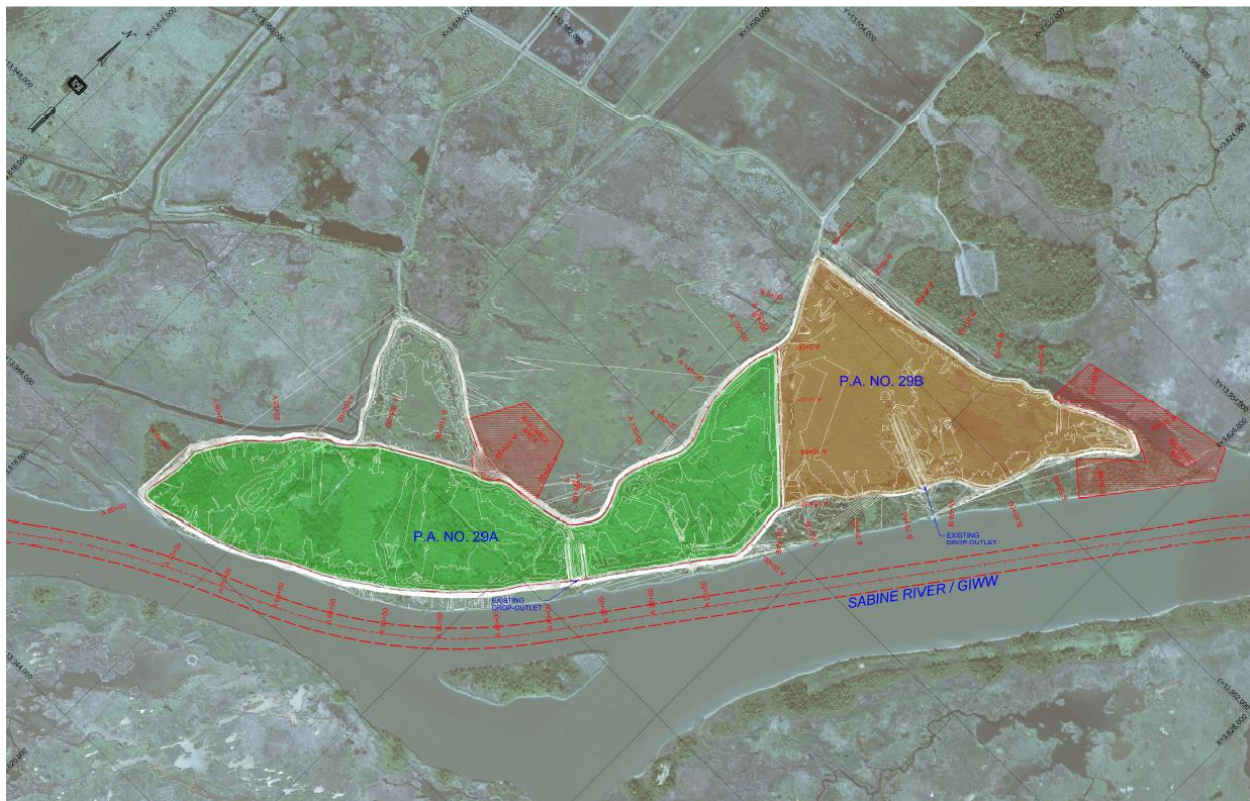


## Appendix F: Base Plan Site Improvement Summary

### Location

This upland site is located on a small bluff along the left ascending bank at the mouth of the middle pass of the Sabine River delta in Orange Co. Texas. The site contains two placement cells; Cell B in the northerly portion containing 175 acre's and Cell A in the southerly portion containing 500 acre. There is an existing engineered outfall structure in each cell. Two exclusive areas are directly adjacent to the existing embankments and should be avoided. The exact nature of the avoidance areas is unknown. These avoidance areas occur in low laying areas along the northerly margin between the banks of Coon Bayou and the Sabine river of containment Cell A and an additional area along the northern perimeter in the Southerly portion of containment Cell A. The Sabine River navigation channel occurs along the southern border and the centerline of it serves to delineate the political boundary between the states of Texas and Louisiana.



## Current Conditions

- Outlet structures at both 29A and 29B need to be replaced to make site operational

	29A	29B	Total	
<sup>1</sup> Current Capacity (cu yds)	233,194	111,113	344,307	

Note 1: Current capacities doesn't maintain a 3 ft Freeboard throughout the PA.

*Pictures from Site visit conducted in 2012.*

*W:\CADD\projects\Placement-Areas\SNWW\SABINE RIVER PLACEMENT AREA 29\photos*

## Dike Raise Options

	29A	29B	Total	
<sup>1</sup> Raise to Both Cells to Elev. +13.0 ft (cu yds)	233,194*	522,635	755,828	
<sup>1</sup> Raise Both Cells to Elev. +16.0 ft (cu yds)	816,580	975,065	1.8 million	

Note 1: This elevation includes the required 3 ft Freeboard.

Note \*: This option will only increase Freeboard to 29A. It will not increase the current capacities.

## Quantities

Listed below are basic quantities needed to make both sites operational. Some smaller items needed for construction are not shown below.

### A. Current Conditions

Item No.	Description	Estimated Quantity	Unit
XXXX	New Drop-Outlet Structure (4 Bays)	1	Job
XXXX	New Drop-Outlet Structure (3 Bays)	1	Job

### B. Raise to Elev. +13.0 ft

Item No.	Description	Estimated Quantity	Unit
XXXX	New Drop-Outlet Structure (4 Bays)	1	Job
XXXX	New Drop-Outlet Structure (3 Bays)	1	Job
XXXX	Semi-compacted Containment Dike Raise	194,159	C.Y.
XXXX	Perimeter Ditch	23,392	L.F.

### C. Raise to Elev. +16.0 ft

Item No.	Description	Estimated Quantity	Unit
XXXX	New Drop-Outlet Structure ( 5 Bays)	1	Job
XXXX	New Drop-Outlet Structure (3 Bays)	1	Job
XXXX	Semi-compacted Containment Dike Raise	281,062	C.Y.
XXXX	Perimeter Ditch	23,392	L.F.