





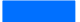


-  INDEX GRID
-  DREDGE AREA
-  STUDY AREA
-  DMMP DISPOSAL SITE
- ADVERSE IMPACT**
-  BOTTOMLAND HARDWOOD DISPOSAL SITE
-  EMERGENT WETLAND DISPOSAL SITE
-  FORESTED WETLAND DISPOSAL SITE
-  OPEN WATER DISPOSAL SITE



**U.S. ARMY CORPS  
OF ENGINEERS  
TULSA DISTRICT**

MCCLELLAN-KERR ARKANSAS  
RIVER NAVIGATION SYSTEM

AFTER ACTION ENVIRONMENTAL  
ASSESSMENT

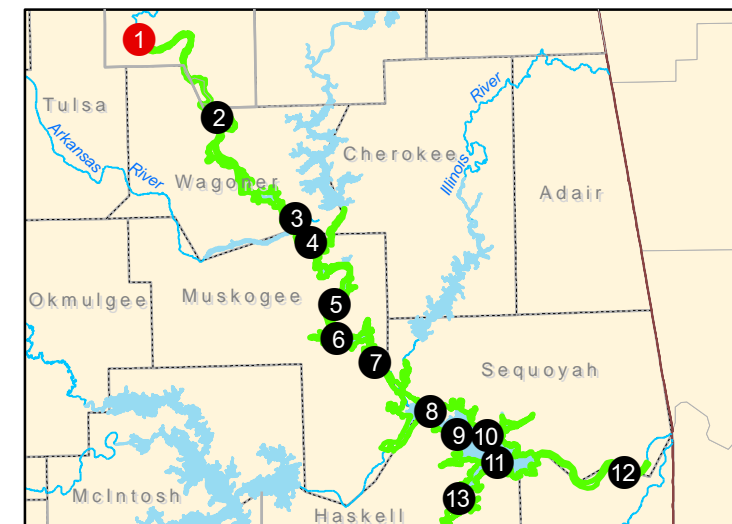
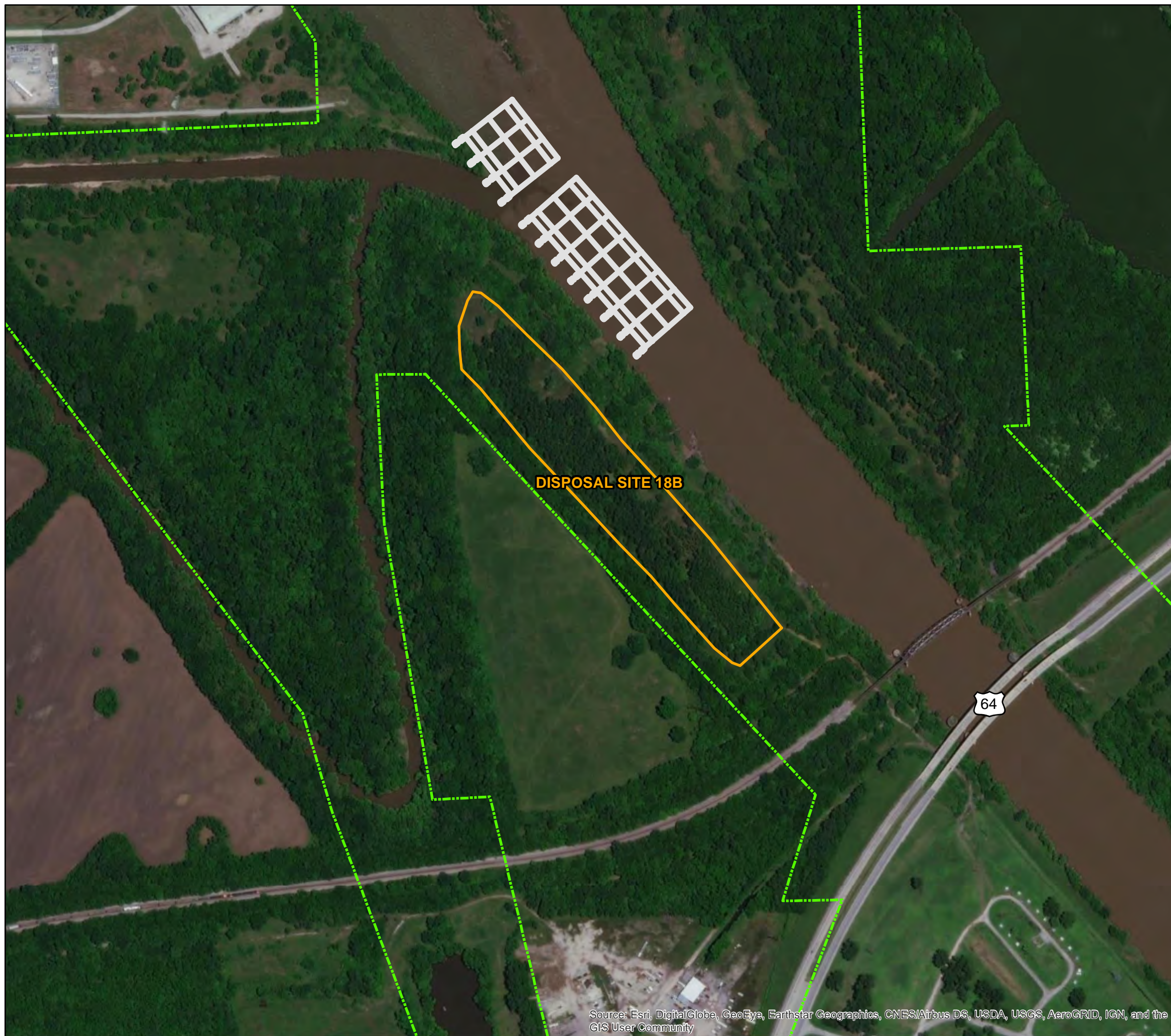
INDEX SHEET






DATE:  
MARCH 2021

MAP NO.  
MKARNS-EA-00





-  DREDGE AREA
-  STUDY AREA
-  DMMP DISPOSAL SITE

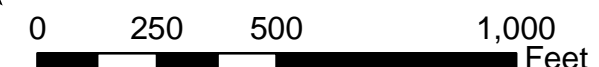


**U.S. ARMY CORPS  
OF ENGINEERS  
TULSA DISTRICT**

MCCLELLAN-KERR ARKANSAS  
RIVER NAVIGATION SYSTEM

AFTER ACTION ENVIRONMENTAL  
ASSESSMENT

INDEX SHEET 01



DATE:

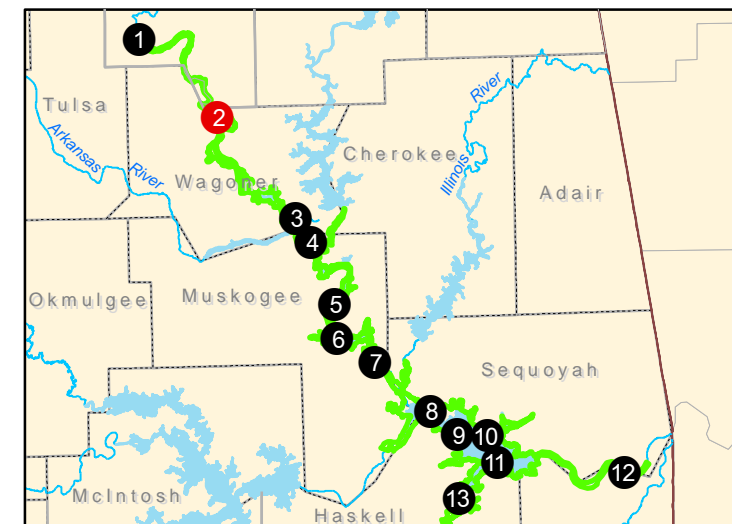
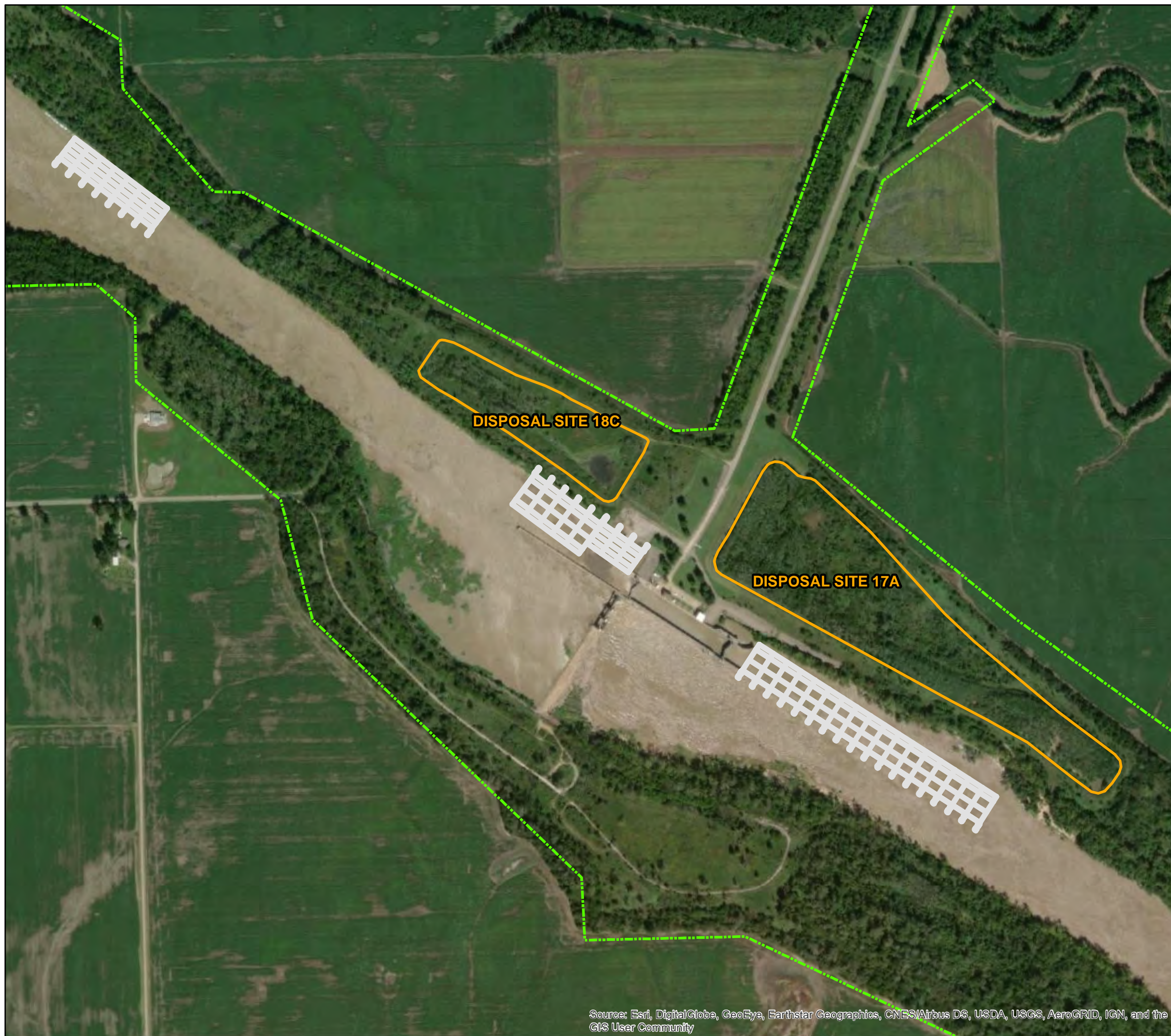
MARCH 2021




MAP NO.

MKARNS-EA-01

Source: Esri, DigitalGlobe, GeoEye, Earthstar Geographics, CNES/Airbus DS, USDA, USGS, AeroGRID, IGN, and the GIS User Community





-  DREDGE AREA
-  STUDY AREA
-  DMMP DISPOSAL SITE



**U.S. ARMY CORPS  
OF ENGINEERS  
TULSA DISTRICT**

MCCLELLAN-KERR ARKANSAS  
RIVER NAVIGATION SYSTEM

AFTER ACTION ENVIRONMENTAL  
ASSESSMENT

INDEX SHEET 02



0 250 500 1,000  
Feet

DATE:

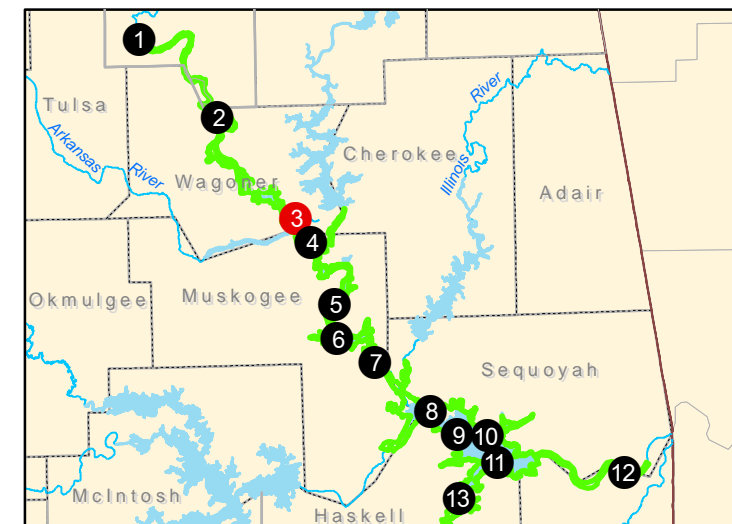
MARCH 2021



MAP NO.

MKARNS-EA-02

Source: Esri, DigitalGlobe, GeoEye, Earthstar Geographics, CNES/Airbus DS, USDA, USGS, AeroGRID, IGN, and the GIS User Community





-  STUDY AREA
-  DMMP DISPOSAL SITE



**U.S. ARMY CORPS  
OF ENGINEERS  
TULSA DISTRICT**

MCCLELLAN-KERR ARKANSAS  
RIVER NAVIGATION SYSTEM

AFTER ACTION ENVIRONMENTAL  
ASSESSMENT

INDEX SHEET 03



0 250 500 1,000  
Feet

DATE:

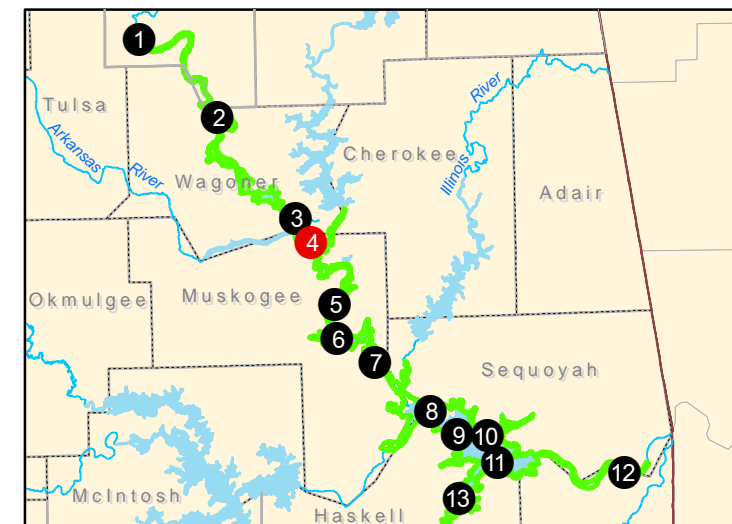
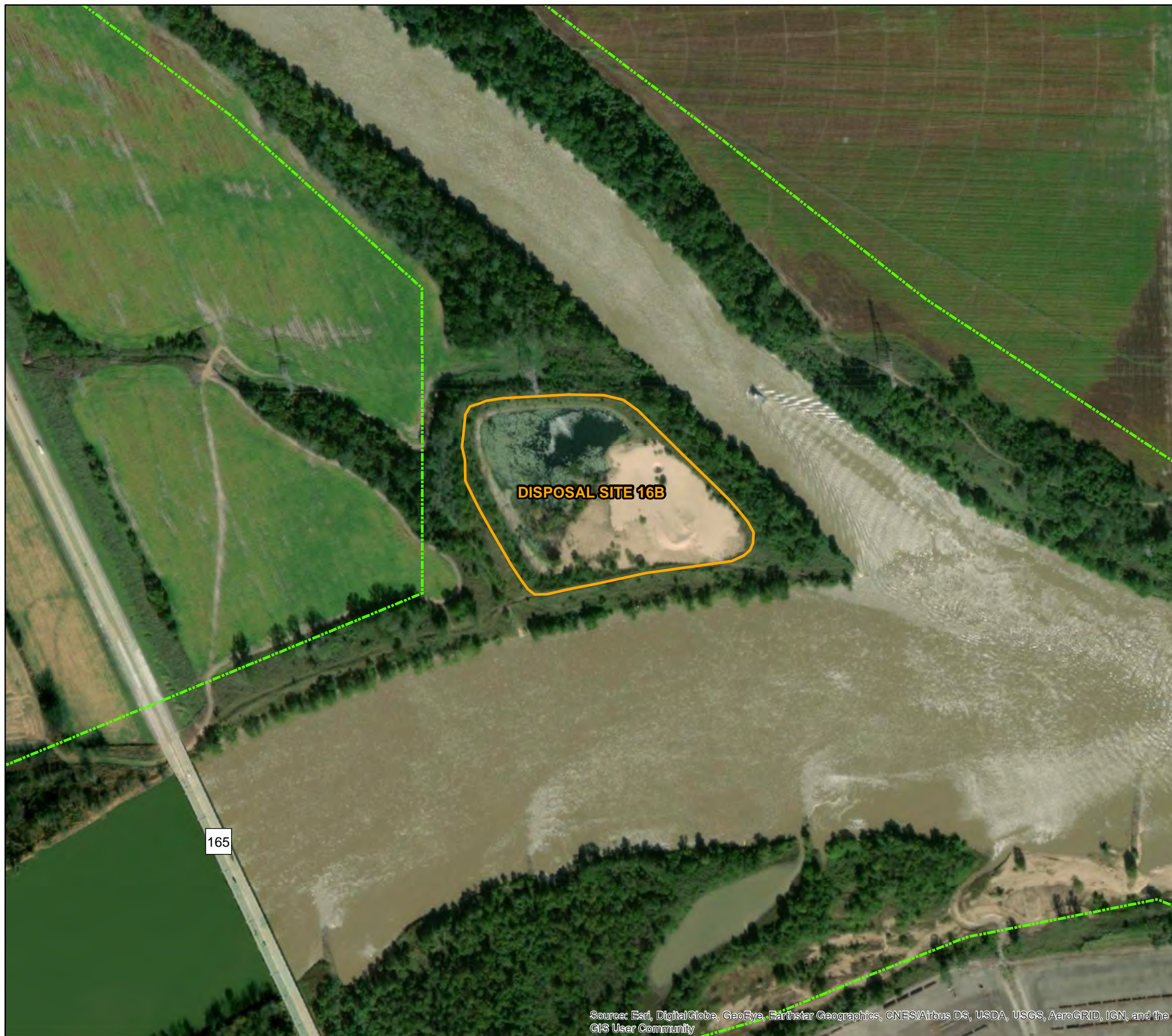
MARCH 2021



MAP NO.

MKARNS-EA-03

Source: Esri, DigitalGlobe, GeoEye, Earthstar Geographics, CNES/Airbus DS, USDA, USGS, AeroGRID, IGN, and the GIS User Community





-  STUDY AREA
-  DMMP DISPOSAL SITE



**U.S. ARMY CORPS  
OF ENGINEERS  
TULSA DISTRICT**

MCCLELLAN-KERR ARKANSAS  
RIVER NAVIGATION SYSTEM

AFTER ACTION ENVIRONMENTAL  
ASSESSMENT

INDEX SHEET 04



DATE:

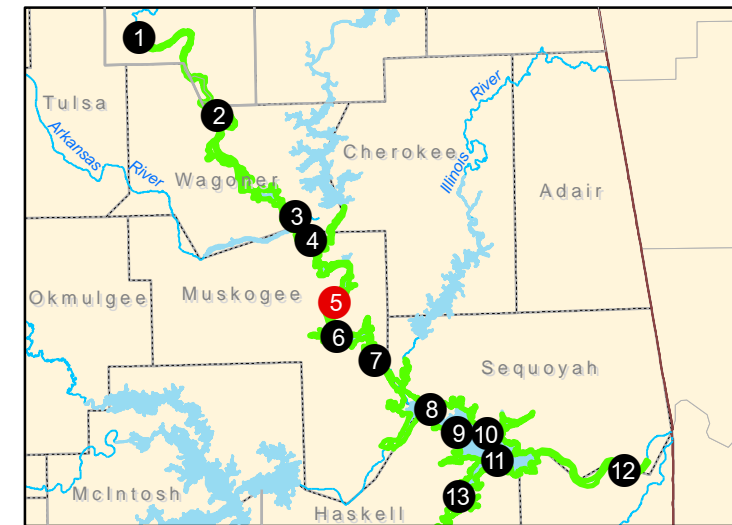
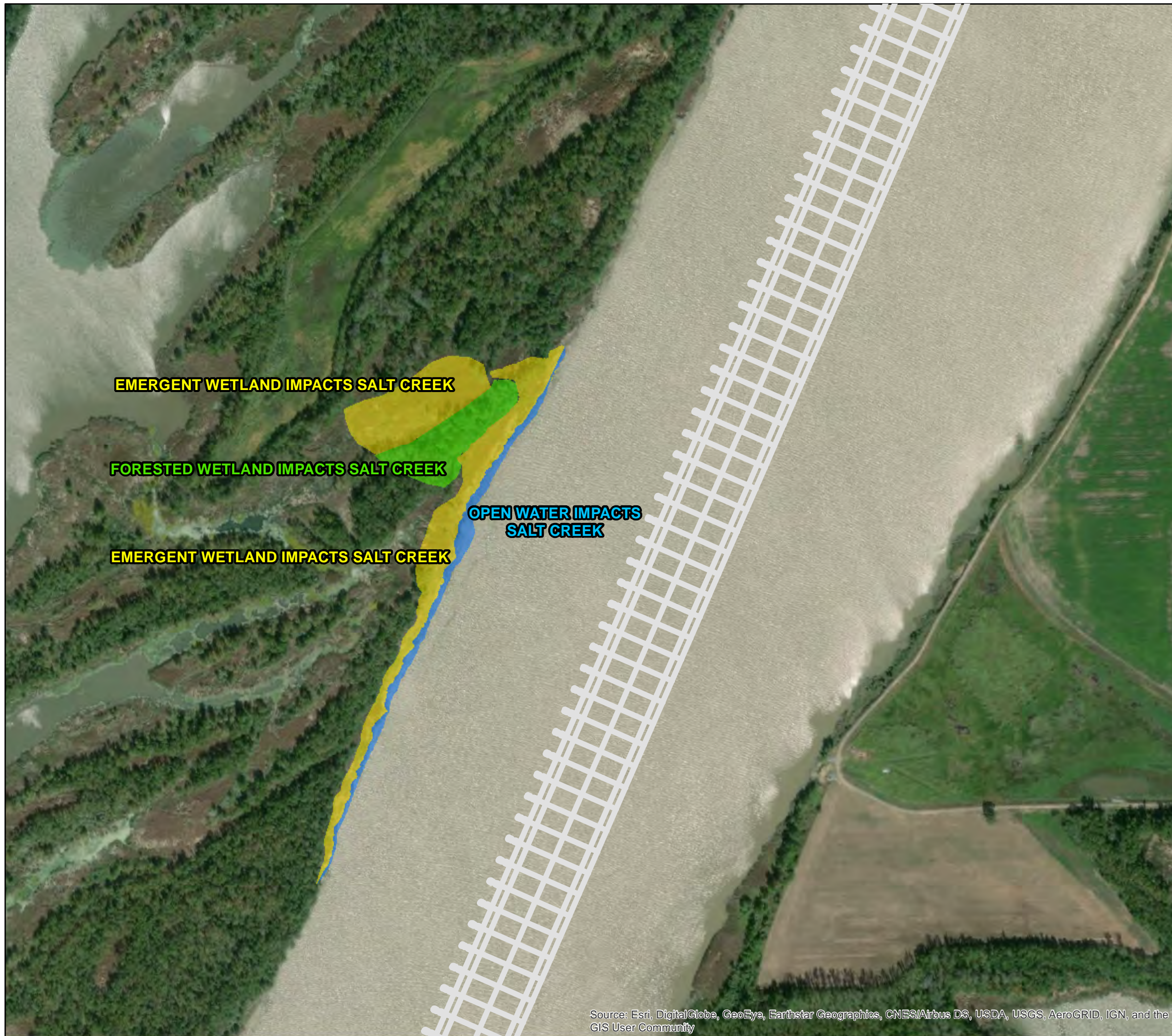
MARCH 2021



MAP NO.

MKARNS-EA-04

Source: Esri, DigitalGlobe, GeoEye, Earthstar Geographics, CNES/Airbus DS, USDA, USGS, AeroGRID, IGN, and the GIS User Community





-  DREDGE AREA
-  STUDY AREA
- ADVERSE IMPACT AREAS**
-  EMERGENT WETLAND DISPOSAL SITE
-  FORESTED WETLAND DISPOSAL SITE
-  OPEN WATER DISPOSAL SITE



**U.S. ARMY CORPS  
OF ENGINEERS  
TULSA DISTRICT**

MCCLELLAN-KERR ARKANSAS  
RIVER NAVIGATION SYSTEM

AFTER ACTION ENVIRONMENTAL  
ASSESSMENT

INDEX SHEET 05



0 250 500 1,000  
Feet

DATE:

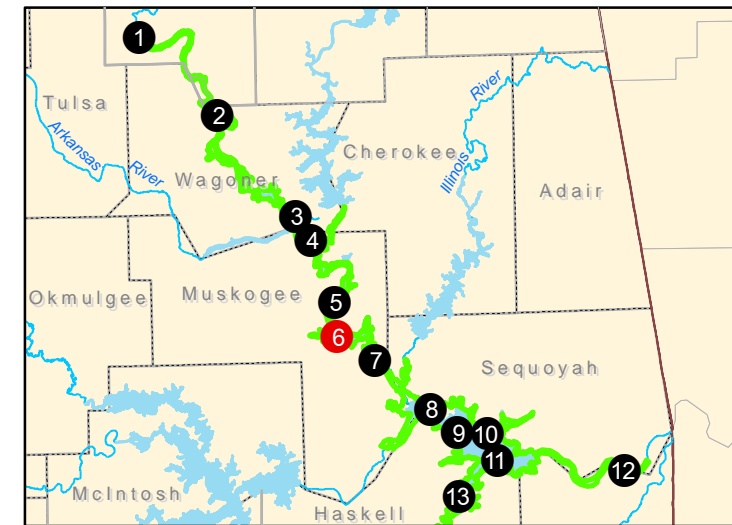
MARCH 2021




MAP NO.

MKARNS-EA-05

Source: Esri, DigitalGlobe, GeoEye, Earthstar Geographics, CNES/Airbus DS, USDA, USGS, AeroGRID, IGN, and the GIS User Community





-  DREDGE AREA
-  STUDY AREA
- ADVERSE IMPACT AREAS**
-  OPEN WATER DISPOSAL SITE



**U.S. ARMY CORPS  
OF ENGINEERS  
TULSA DISTRICT**

MCCLELLAN-KERR ARKANSAS  
RIVER NAVIGATION SYSTEM

AFTER ACTION ENVIRONMENTAL  
ASSESSMENT

INDEX SHEET 06



DATE:

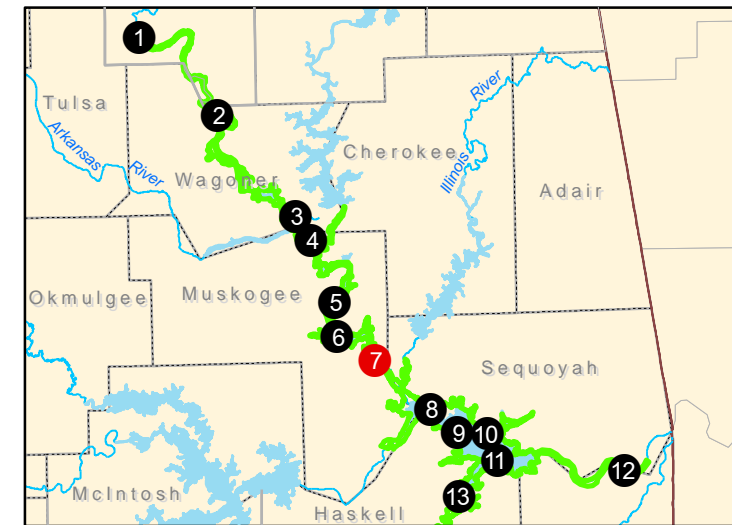
MARCH 2021

MAP NO.

MKARNS-EA-06

Source: Esri, DigitalGlobe, GeoEye, Earthstar Geographics, CNES/Airbus DS, USDA, USGS, AeroGRID, IGN, and the GIS User Community





- DREDGE AREA
- ADVERSE IMPACT AREAS**
- BOTTOMLAND HARDWOOD DISPOSAL SITE



**U.S. ARMY CORPS  
OF ENGINEERS  
TULSA DISTRICT**

MCCLELLAN-KERR ARKANSAS  
RIVER NAVIGATION SYSTEM

AFTER ACTION ENVIRONMENTAL  
ASSESSMENT

INDEX SHEET 07



DATE:

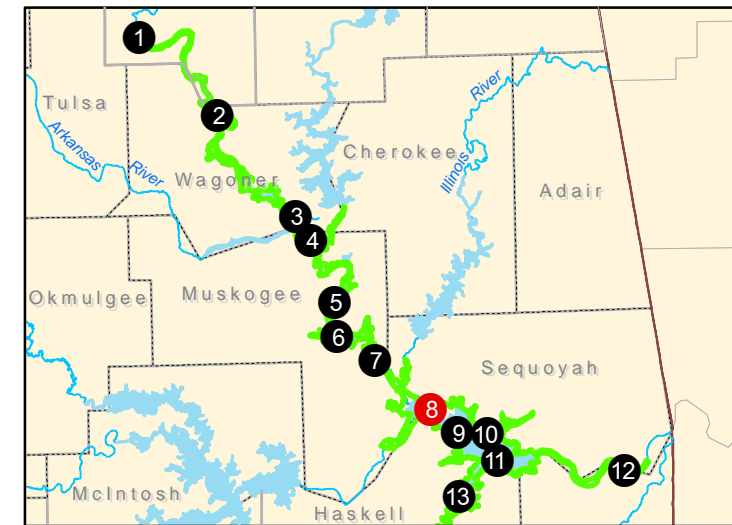
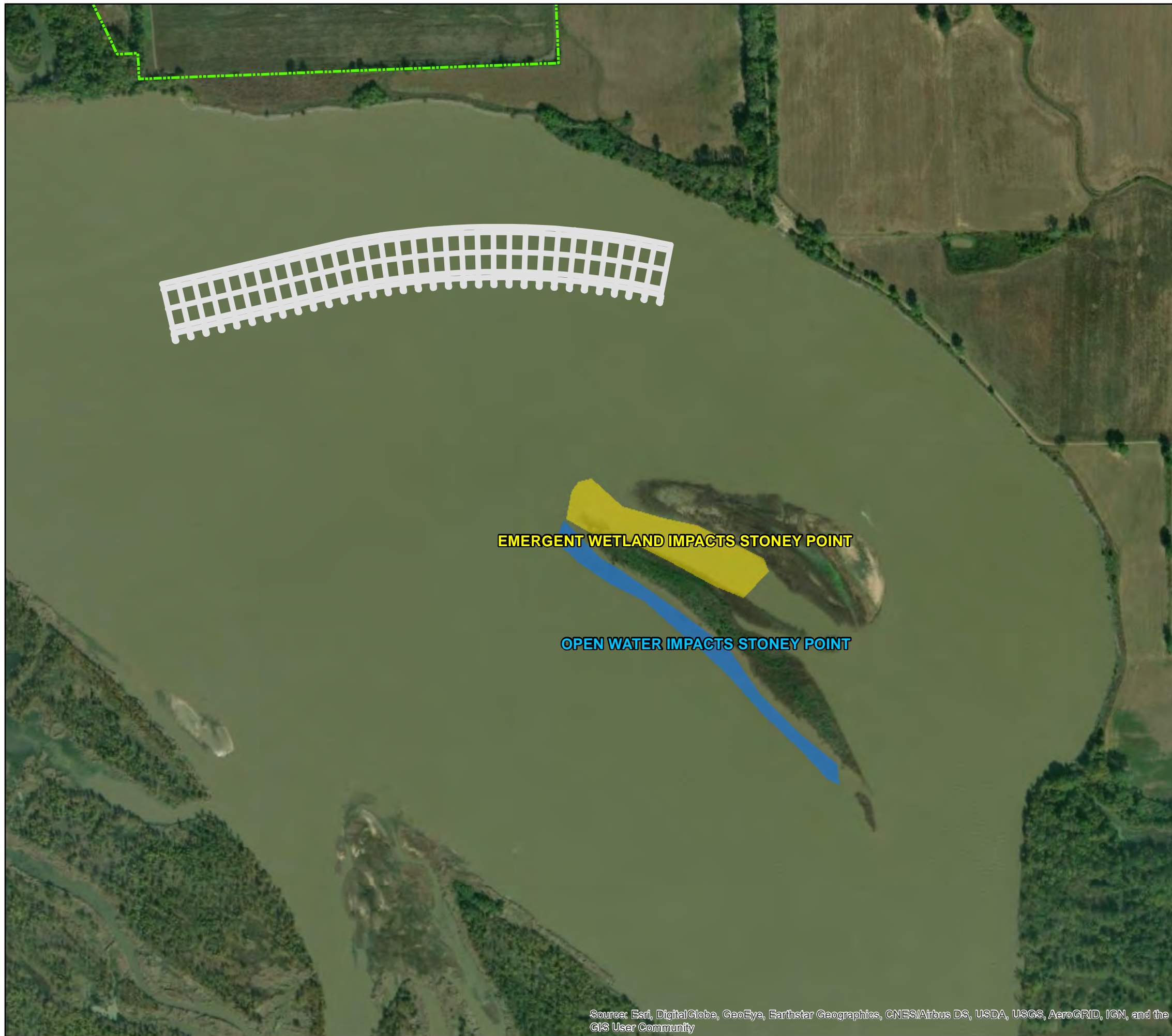
MARCH 2021





MAP NO.

MKARNS-EA-07

Source: Esri, DigitalGlobe, GeoEye, Earthstar Geographics, CNES/Airbus DS, USDA, USGS, AeroGRID, IGN, and the GIS User Community





-  DREDGE AREA
-  STUDY AREA
- ADVERSE IMPACT AREAS**
-  EMERGENT WETLAND DISPOSAL SITE
-  OPEN WATER DISPOSAL SITE

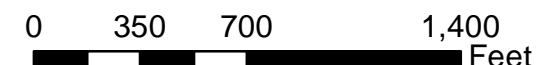


**U.S. ARMY CORPS  
OF ENGINEERS  
TULSA DISTRICT**

MCCLELLAN-KERR ARKANSAS  
RIVER NAVIGATION SYSTEM

AFTER ACTION ENVIRONMENTAL  
ASSESSMENT

INDEX SHEET 08



DATE:

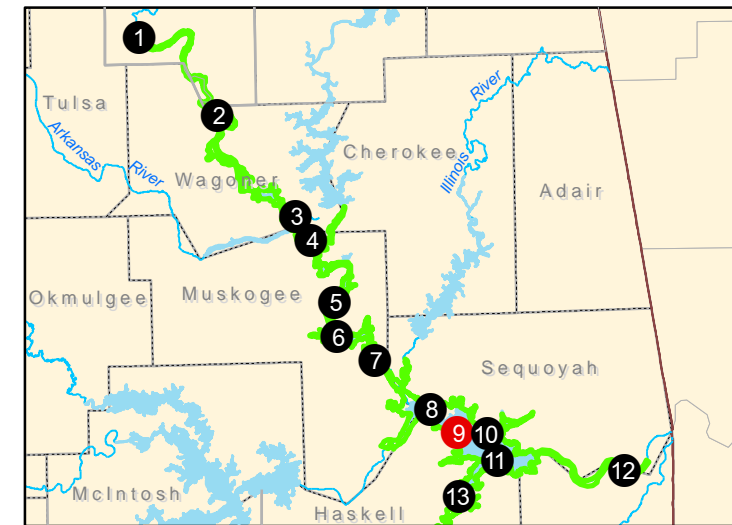
MARCH 2021





MAP NO.

MKARNS-EA-08

Source: Esri, DigitalGlobe, GeoEye, Earthstar Geographics, CNES/Airbus DS, USDA, USGS, AeroGRID, IGN, and the GIS User Community





-  DREDGE AREA
-  STUDY AREA
- ADVERSE IMPACT AREAS**
-  EMERGENT WETLAND DISPOSAL SITE
-  OPEN WATER DISPOSAL SITE



**U.S. ARMY CORPS  
OF ENGINEERS  
TULSA DISTRICT**

MCCLELLAN-KERR ARKANSAS  
RIVER NAVIGATION SYSTEM

AFTER ACTION ENVIRONMENTAL  
ASSESSMENT

INDEX SHEET 09



0 500 1,000 2,000  
Feet

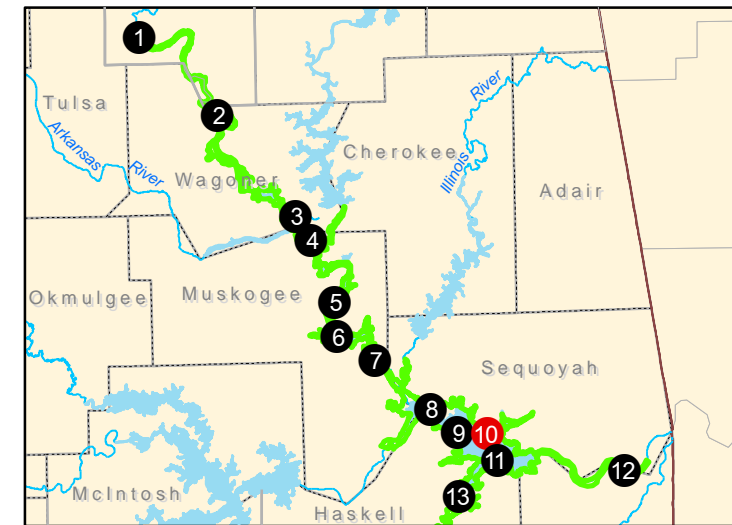
DATE:




MARCH 2021

MAP NO.

MKARNS-EA-09





-  DREDGE AREA
-  STUDY AREA
- ADVERSE IMPACT AREAS**
-  OPEN WATER DISPOSAL SITE



**U.S. ARMY CORPS  
OF ENGINEERS  
TULSA DISTRICT**

MCCLELLAN-KERR ARKANSAS  
RIVER NAVIGATION SYSTEM

AFTER ACTION ENVIRONMENTAL  
ASSESSMENT

INDEX SHEET 10



DATE:

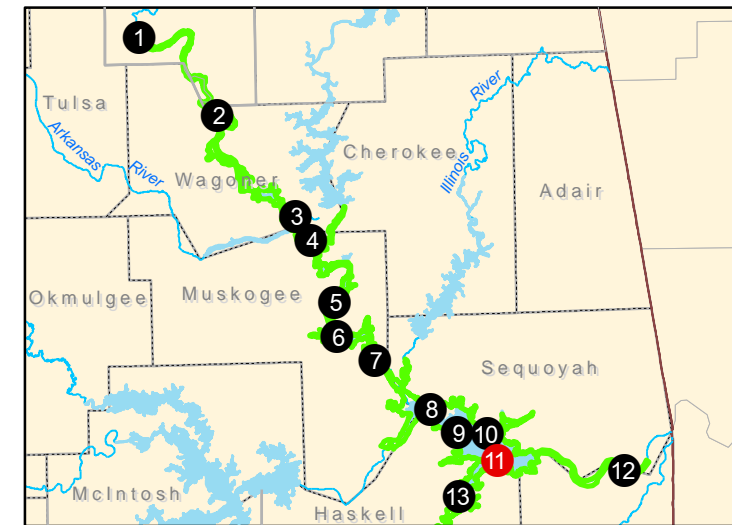
MARCH 2021




MAP NO.

MKARNS-EA-10

Source: Esri, DigitalGlobe, GeoEye, Earthstar Geographics, CNES/Airbus DS, USDA, USGS, AeroGRID, IGN, and the GIS User Community





-  DREDGE AREA
-  STUDY AREA
- ADVERSE IMPACT AREAS**
-  OPEN WATER DISPOSAL SITE

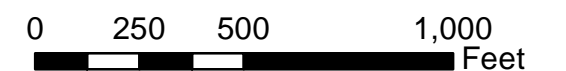


**U.S. ARMY CORPS  
OF ENGINEERS  
TULSA DISTRICT**

MCCLELLAN-KERR ARKANSAS  
RIVER NAVIGATION SYSTEM

AFTER ACTION ENVIRONMENTAL  
ASSESSMENT

INDEX SHEET 11



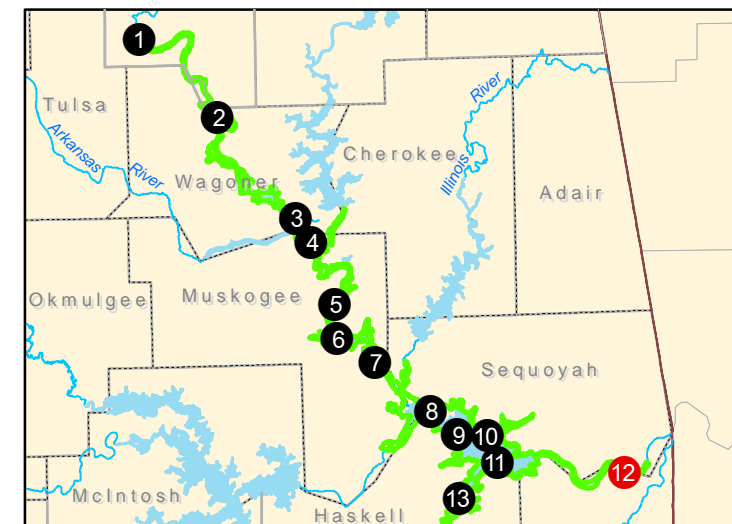
DATE:




MARCH 2021

MAP NO.

MKARNS-EA-11





-  DREDGE AREA
-  STUDY AREA
-  DMMP DISPOSAL SITE



**U.S. ARMY CORPS  
OF ENGINEERS  
TULSA DISTRICT**

MCCLELLAN-KERR ARKANSAS  
RIVER NAVIGATION SYSTEM

AFTER ACTION ENVIRONMENTAL  
ASSESSMENT

INDEX SHEET 12



DATE:

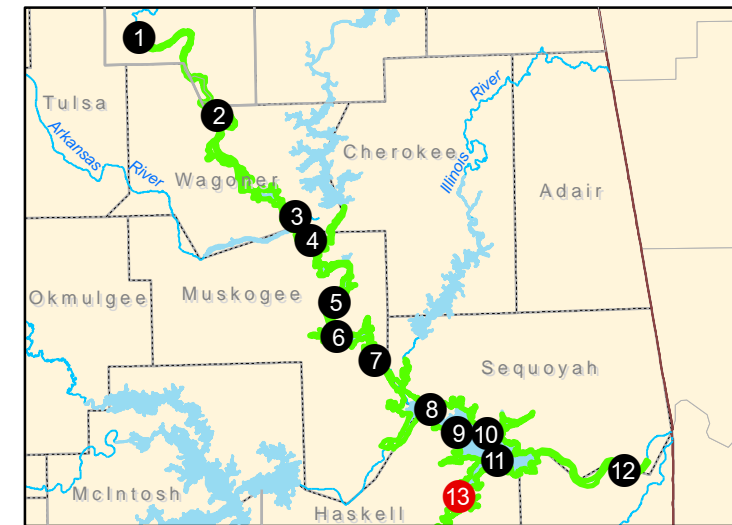
MARCH 2021




MAP NO.

MKARNS-EA-12

Source: Esri, DigitalGlobe, GeoEye, Earthstar Geographics, CNES/Airbus DS, USDA, USGS, AeroGRID, IGN, and the GIS User Community





-  DREDGE AREA
-  STUDY AREA
- ADVERSE IMPACT AREAS**
-  OPEN WATER DISPOSAL SITE

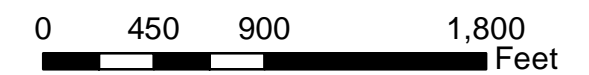


**U.S. ARMY CORPS  
OF ENGINEERS  
TULSA DISTRICT**

MCCLELLAN-KERR ARKANSAS  
RIVER NAVIGATION SYSTEM

AFTER ACTION ENVIRONMENTAL  
ASSESSMENT

INDEX SHEET 13

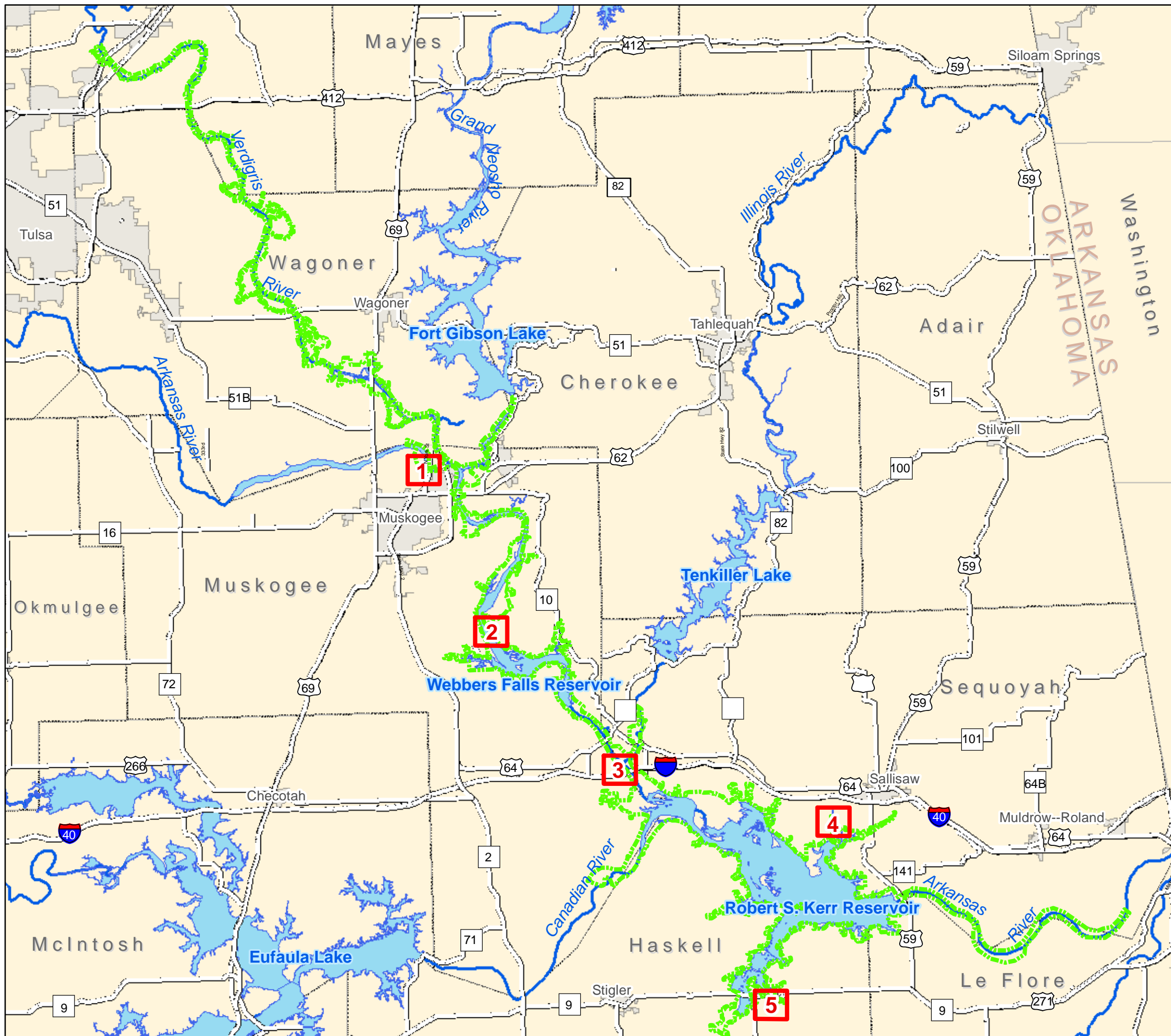


DATE:  
MARCH 2021


MAP NO.  
MKARNS-EA-13

Source: Esri, DigitalGlobe, GeoEye, Earthstar Geographics, CNES/Airbus DS, USDA, USGS, AeroGRID, IGN, and the GIS User Community





-  SECURITY FENCE
-  INDEX GRID
-  STUDY AREA
-  BOTTOMLAND HARDWOOD MITIGATION
-  EMERGENT WETLAND MITIGATION
-  FORESTED WETLAND MITIGATION




**U.S. ARMY CORPS  
OF ENGINEERS  
TULSA DISTRICT**

---

MCCLELLAN-KERR ARKANSAS  
RIVER NAVIGATION SYSTEM

AFTER ACTION  
MITIGATION SITES

INDEX SHEET

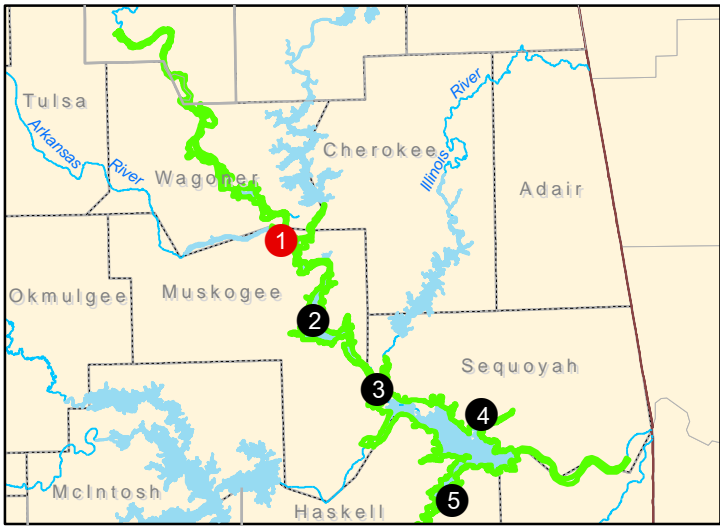
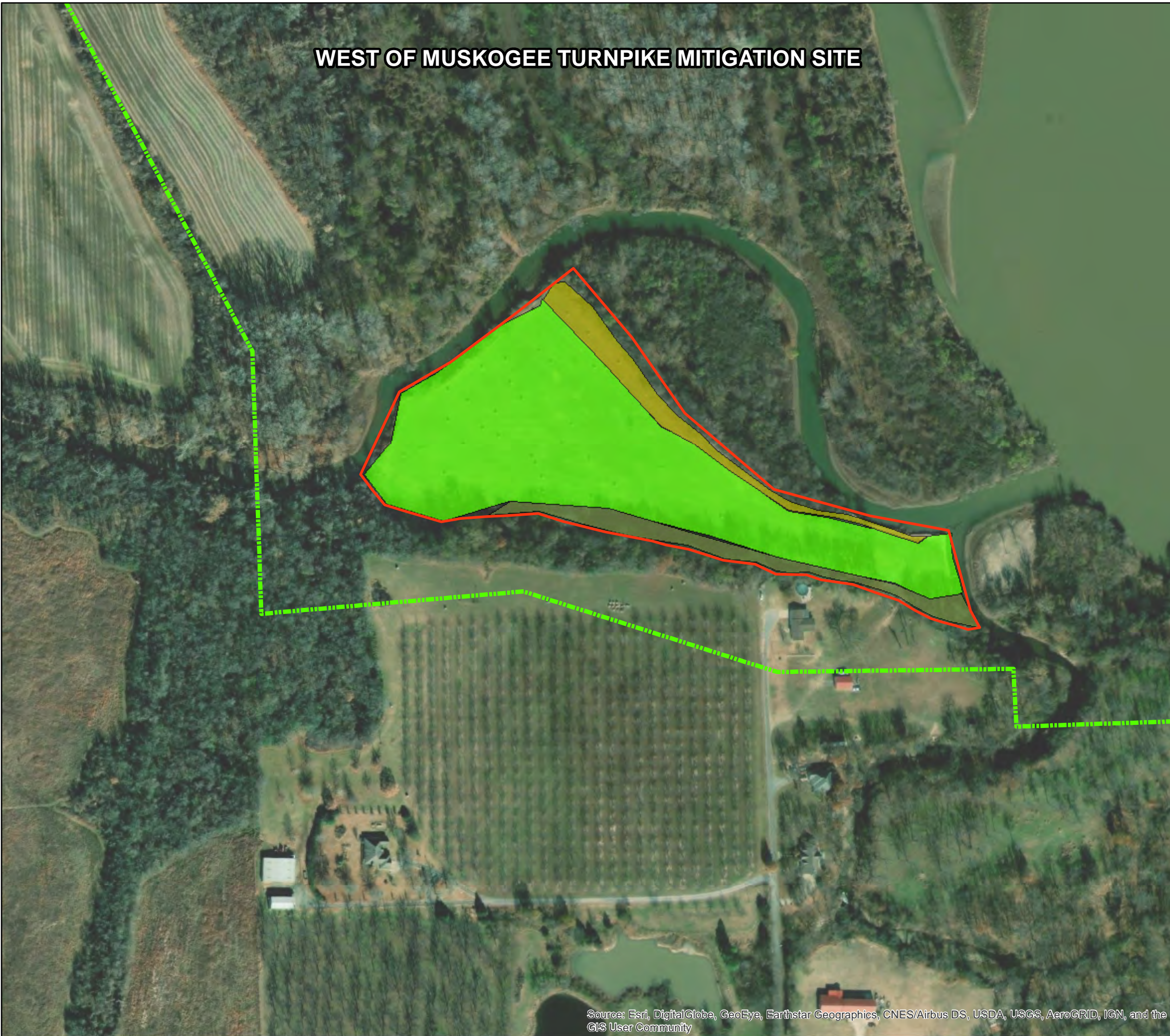







0 3.75 7.5 15  
Miles

DATE: JUNE 2021	MAP NO. MKARNS-MI-00
--------------------	-------------------------



**WEST OF MUSKOGEE TURNPIKE MITIGATION SITE**



-  SECURITY FENCE
-  STUDY AREA
-  BOTTOMLAND HARDWOOD MITIGATION
-  EMERGENT WETLAND MITIGATION
-  FORESTED WETLAND MITIGATION

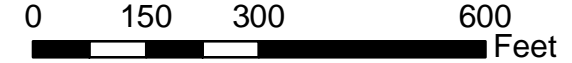


**U.S. ARMY CORPS  
OF ENGINEERS  
TULSA DISTRICT**

MCCLELLAN-KERR ARKANSAS  
RIVER NAVIGATION SYSTEM

AFTER ACTION  
MITIGATION SITES

INDEX SHEET 01

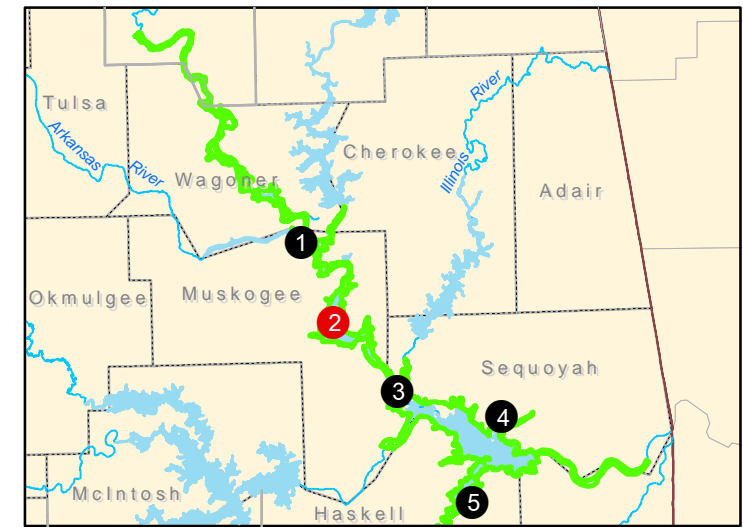






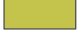
DATE: JUNE 2021	MAP NO. MKARNS-MI-01
--------------------	-------------------------

Source: Esri, DigitalGlobe, GeoEye, Earthstar Geographics, CNES/Airbus DS, USDA, USGS, AeroGRID, IGN, and the GIS User Community



**E0960 MITIGATION SITE**



-  SECURITY FENCE
-  STUDY AREA
-  BOTTOMLAND HARDWOOD MITIGATION
-  EMERGENT WETLAND MITIGATION
-  FORESTED WETLAND MITIGATION

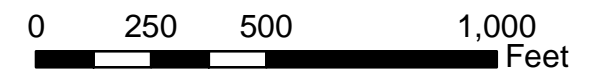


**U.S. ARMY CORPS  
OF ENGINEERS  
TULSA DISTRICT**

MCCLELLAN-KERR ARKANSAS  
RIVER NAVIGATION SYSTEM

AFTER ACTION  
MITIGATION SITES

INDEX SHEET 02



DATE:

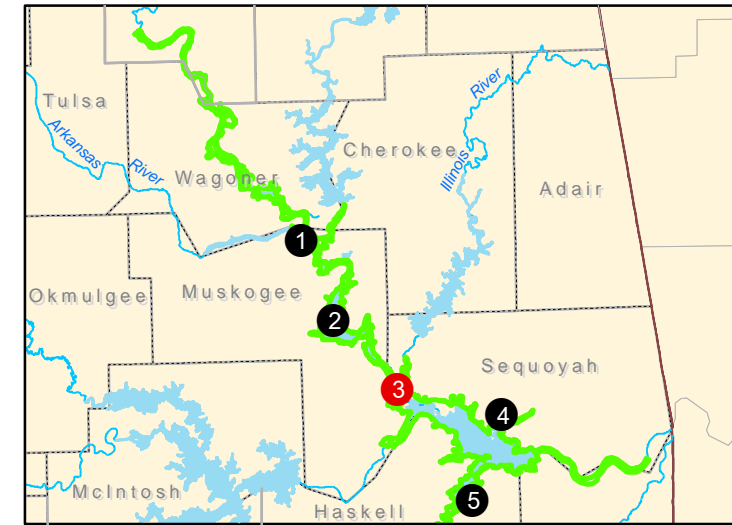
JUNE 2021






MAP NO.

MKARNS-MI-02



# NORTH I-40 MITIGATION SITE



-  SECURITY FENCE
-  STUDY AREA
-  BOTTOMLAND HARDWOOD MITIGATION
-  EMERGENT WETLAND MITIGATION
-  FORESTED WETLAND MITIGATION



**U.S. ARMY CORPS  
OF ENGINEERS  
TULSA DISTRICT**

MCCLELLAN-KERR ARKANSAS  
RIVER NAVIGATION SYSTEM

AFTER ACTION  
MITIGATION SITES

INDEX SHEET 03



DATE:

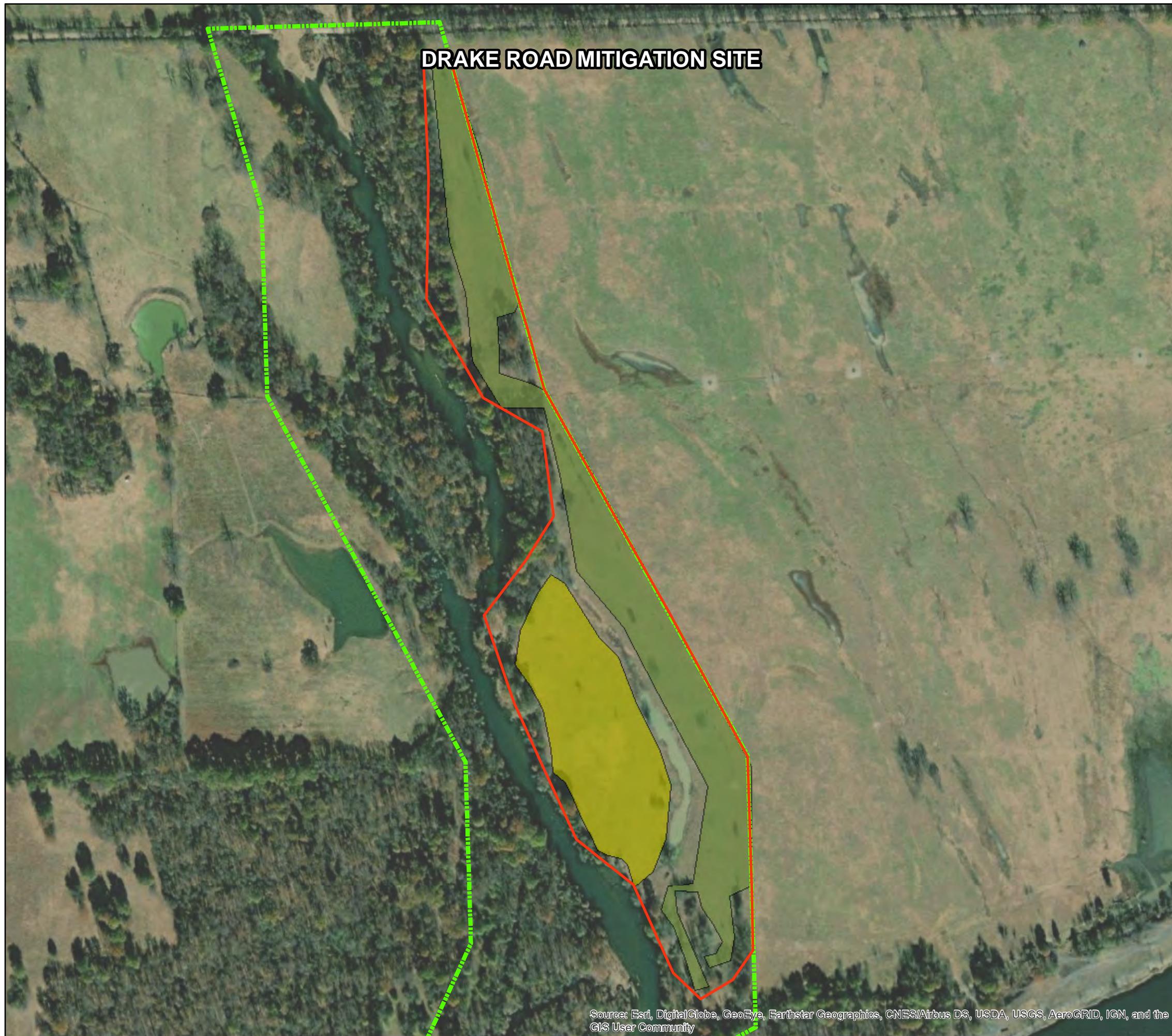
JUNE 2021

MAP NO.

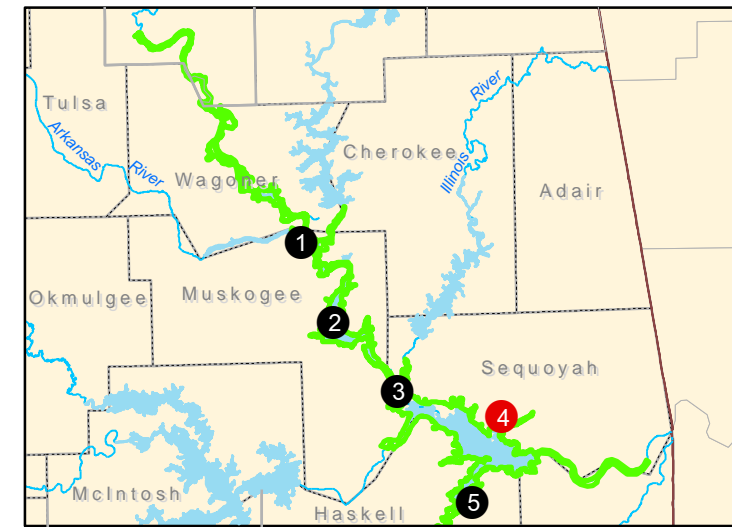
MKARNS-MI-03




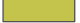
Source: Esri, DigitalGlobe, GeoEye, Earthstar Geographics, CNES/Airbus DS, USDA, USGS, AeroGRID, IGN, and the GIS User Community





**DRAKE ROAD MITIGATION SITE**



-  SECURITY FENCE
-  STUDY AREA
-  BOTTOMLAND HARDWOOD MITIGATION
-  FORESTED WETLAND MITIGATION

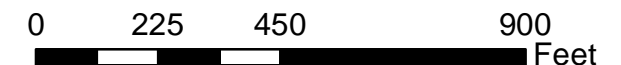


**U.S. ARMY CORPS  
OF ENGINEERS  
TULSA DISTRICT**

MCCLELLAN-KERR ARKANSAS  
RIVER NAVIGATION SYSTEM

AFTER ACTION  
MITIGATION SITES

INDEX SHEET 04



DATE:

JUNE 2021

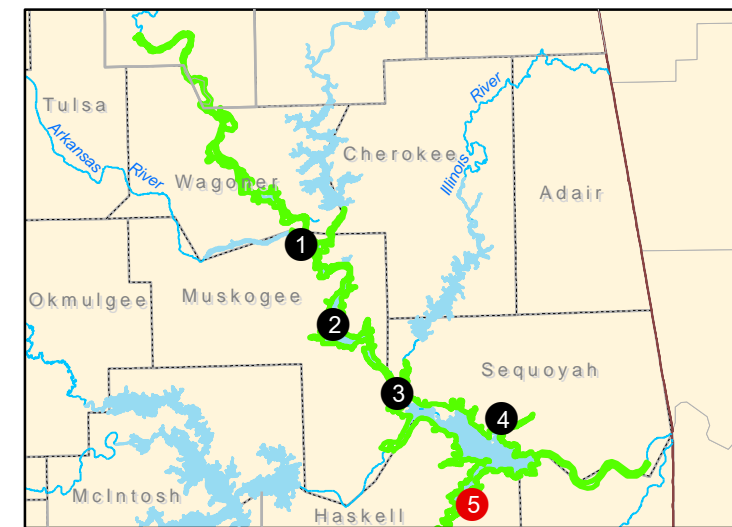
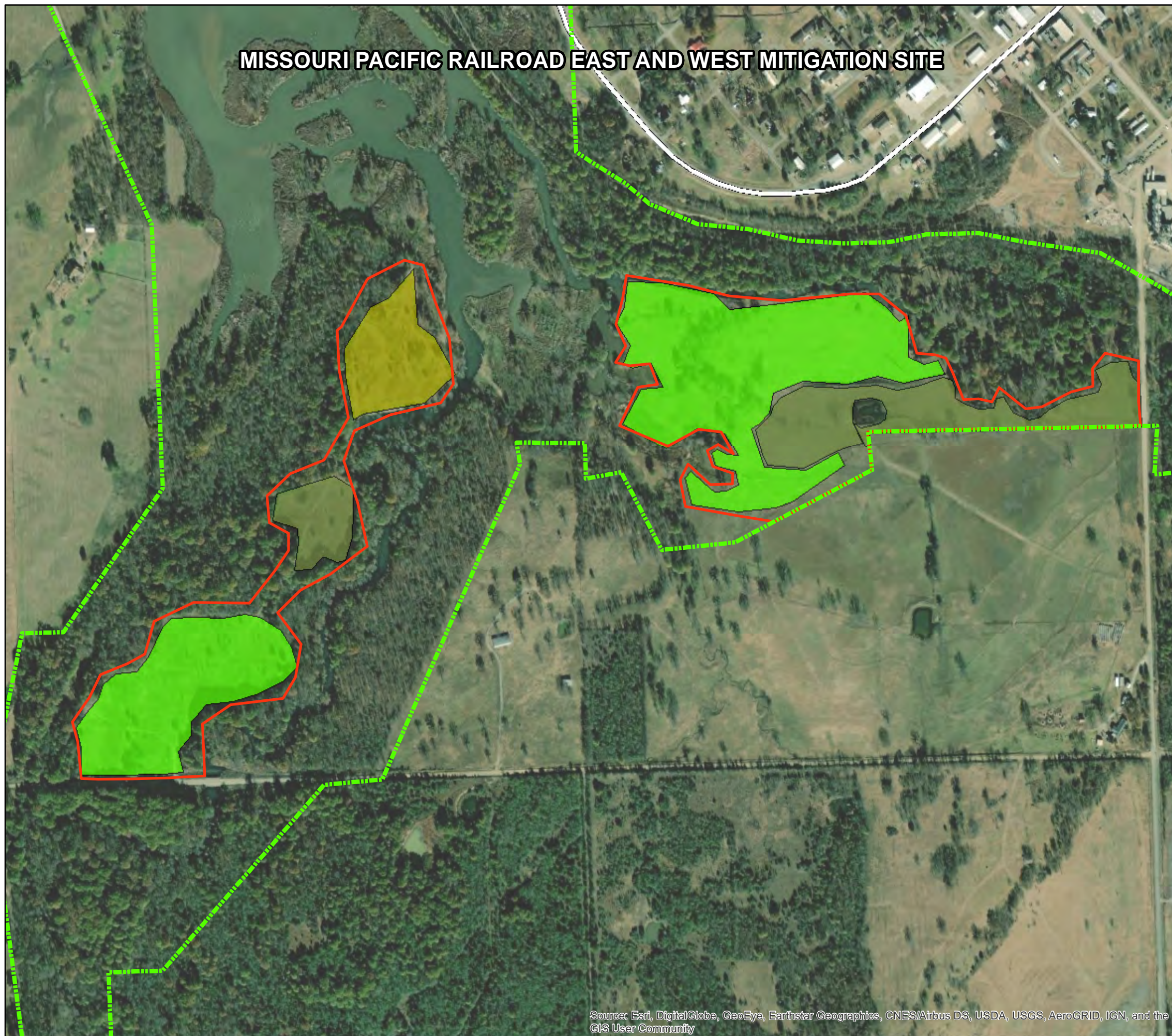
MAP NO.






MKARNS-MI-04

Source: Esri, DigitalGlobe, GeoEye, Earthstar Geographics, CNES/Airbus DS, USDA, USGS, AeroGRID, IGN, and the GIS User Community



# MISSOURI PACIFIC RAILROAD EAST AND WEST MITIGATION SITE



-  SECURITY FENCE
-  STUDY AREA
-  BOTTOMLAND HARDWOOD MITIGATION
-  EMERGENT WETLAND MITIGATION
-  FORESTED WETLAND MITIGATION



**U.S. ARMY CORPS  
OF ENGINEERS  
TULSA DISTRICT**

MCCLELLAN-KERR ARKANSAS  
RIVER NAVIGATION SYSTEM

AFTER ACTION  
MITIGATION SITES

INDEX SHEET 05



0 250 500 1,000  
Feet

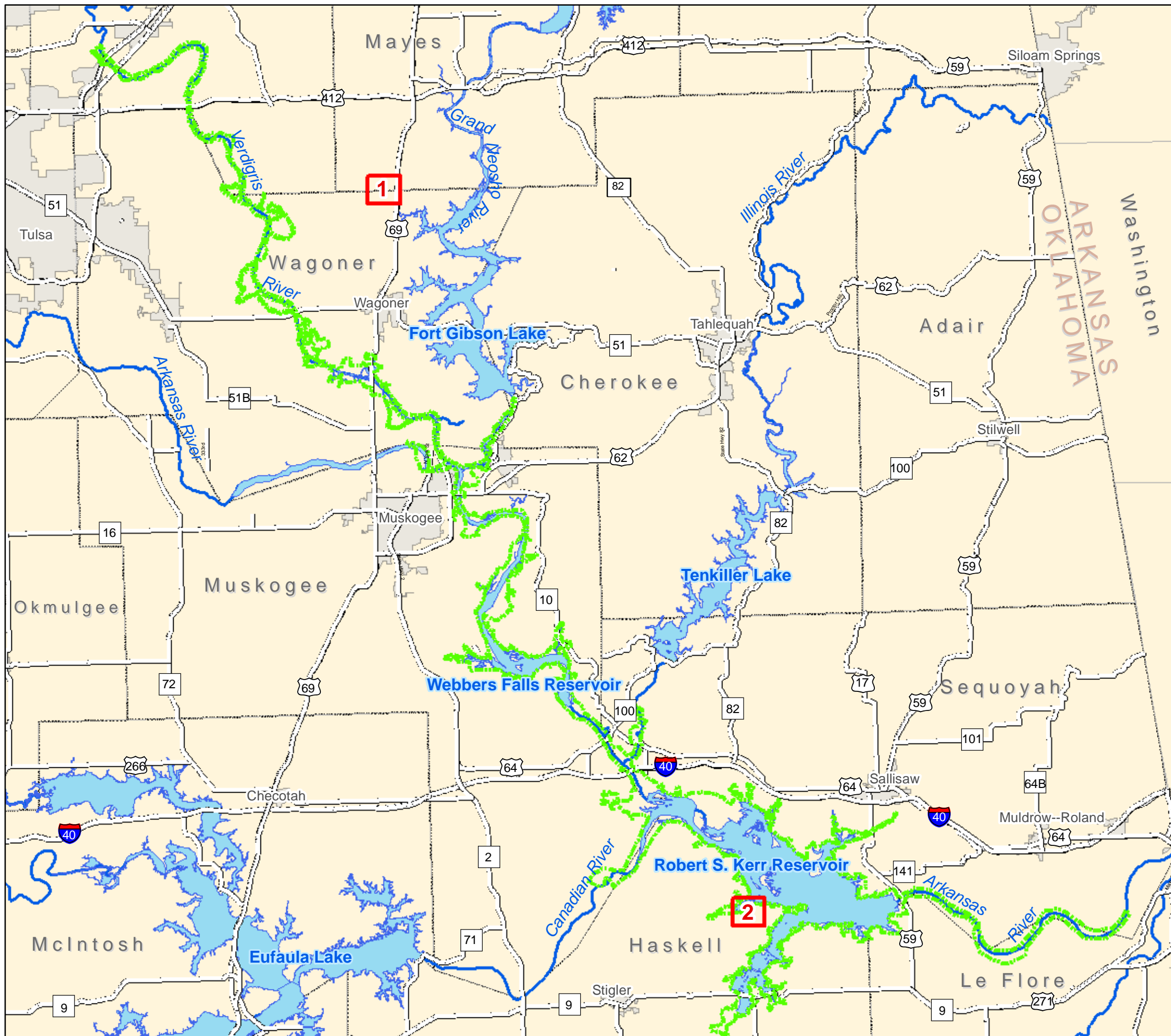
DATE:



JUNE 2021

MAP NO.

MKARNS-MI-05





-  INDEX GRID
-  STUDY AREA

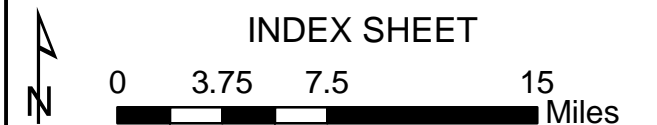


**U.S. ARMY CORPS  
OF ENGINEERS  
TULSA DISTRICT**

MCCLELLAN-KERR ARKANSAS  
RIVER NAVIGATION SYSTEM

AFTER ACTION  
BACKUP MITIGATION SITES

INDEX SHEET

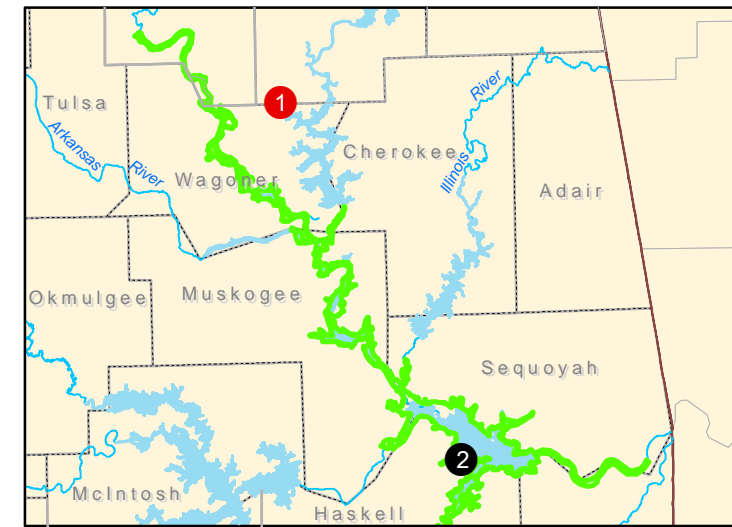
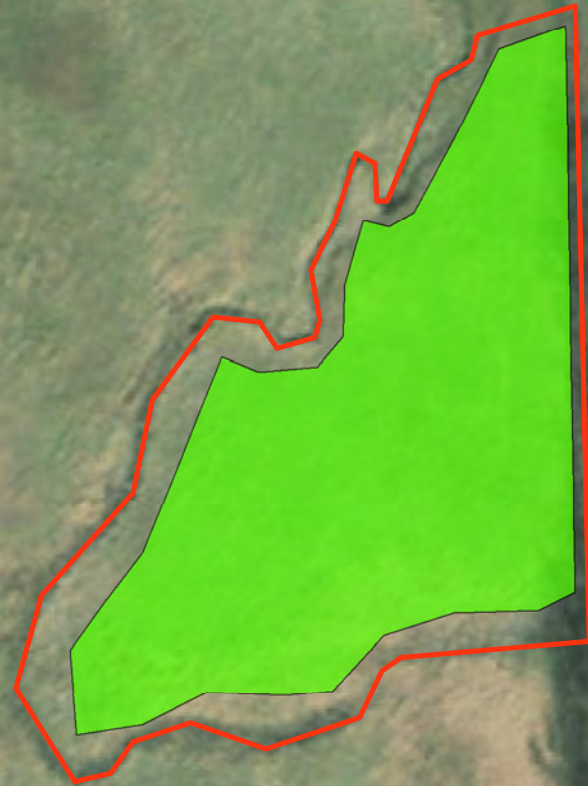


DATE:  
AUGUST 2021

MAP NO.  
MKARNS-BM-00



# TRACT 1304 MITIGATION SITE



- SECURITY FENCE
- EMERGENT WETLAND MITIGATION



**U.S. ARMY CORPS  
OF ENGINEERS  
TULSA DISTRICT**

MCCLELLAN-KERR ARKANSAS  
RIVER NAVIGATION SYSTEM

AFTER ACTION  
BACKUP MITIGATION SITES

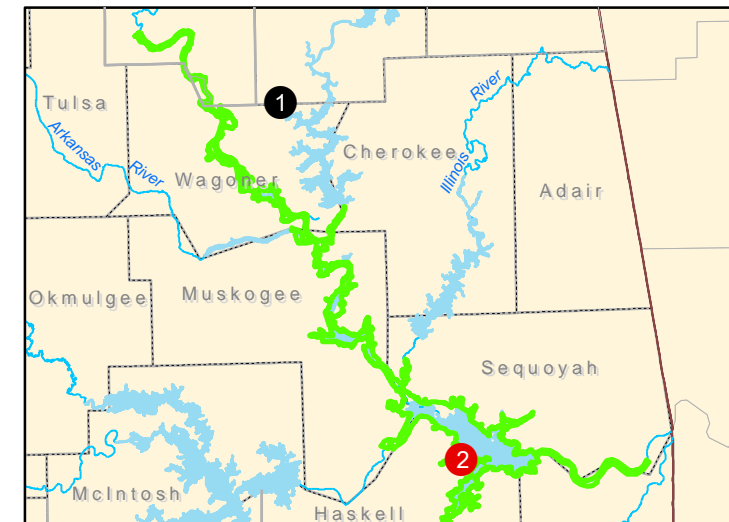
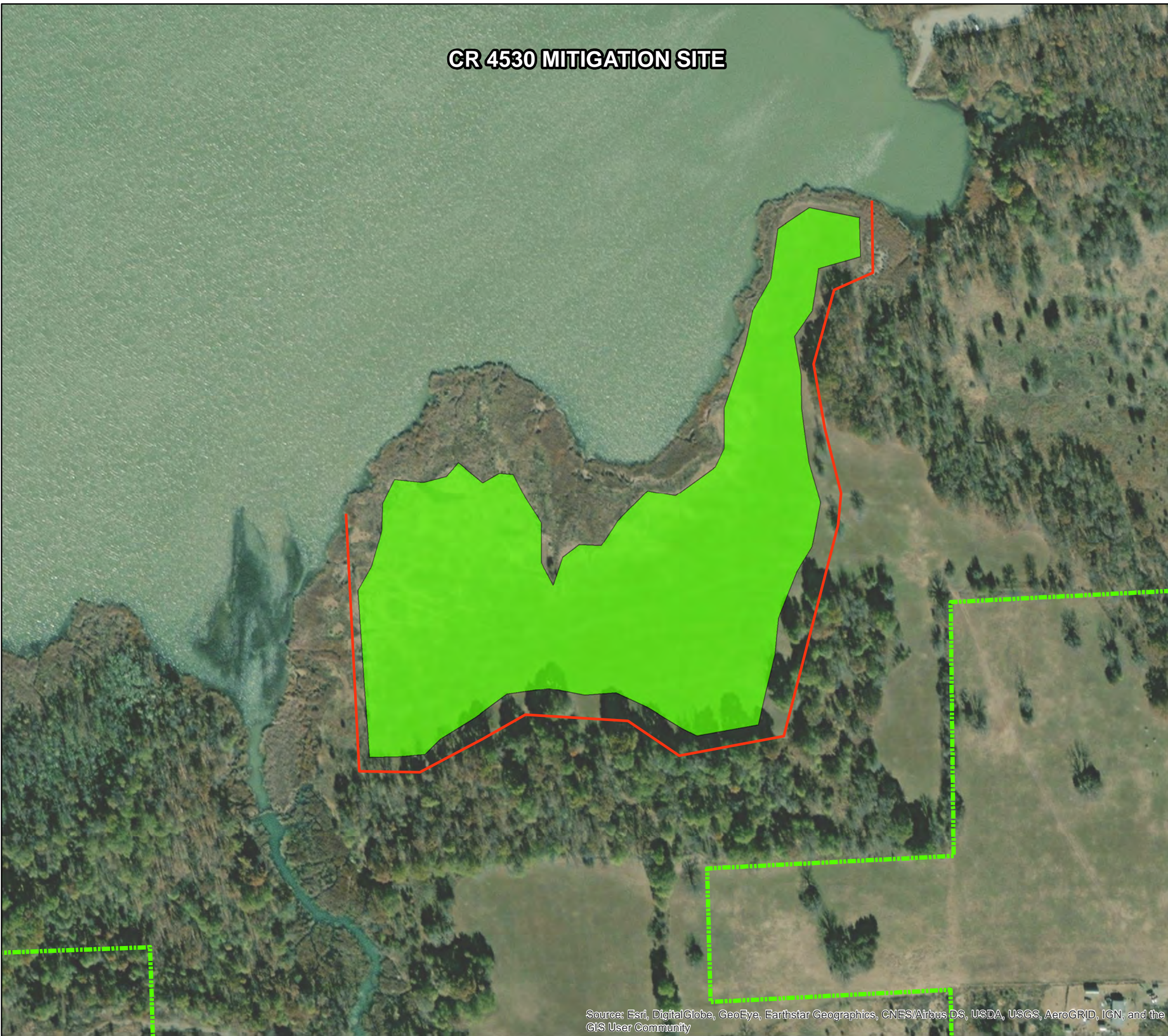


DATE: AUGUST 2021	MAP NO. MKARNS-BM-01
----------------------	-------------------------

Source: Esri, DigitalGlobe, GeoEye, Earthstar Geographics, CNES/Airbus DS, USDA, USGS, AeroGRID, IGN, and the GIS User Community



# CR 4530 MITIGATION SITE



- SECURITY FENCE
- EMERGENT WETLAND MITIGATION
- STUDY AREA



**U.S. ARMY CORPS  
OF ENGINEERS  
TULSA DISTRICT**

MCCLELLAN-KERR ARKANSAS  
RIVER NAVIGATION SYSTEM

AFTER ACTION  
BACKUP MITIGATION SITES

INDEX SHEET 02



0 125 250 500  
Feet

DATE:

AUGUST 2021

MAP NO.

MKARNS-BM-02

Source: Esri, DigitalGlobe, GeoEye, Earthstar Geographics, CNES/Airbus DS, USDA, USGS, AeroGRID, IGN, and the GIS User Community