

*Aleppo: Shelter Sector partners continue to Support displaced people in Rural Aleppo.*

*Two young Syrian IDP children from northern Afrin in their shelter. Shelter sector's partners provided shelter and NFIs support in north of rural Aleppo .*



© UNHCR/A. Chnkaji

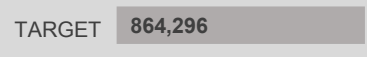
## MAJOR HIGHLIGHTS

- In response to the displacements in the Southern Governorates, the shelter sector partners rehabilitated collective shelters and installed shelter kits, and tents. The shelter response benefited a total of 4,495 IDPs. Most of the IDPs opted to stay with relatives or on rent until they were able to return back to their areas of origin.
- As of mid-August, out of the eight IDP sites that were occupied by the displaced population from Eastern Ghouta, only four IDP sites are occupied and remaining four IDP sites have been closed. Out of four IDP sites that remain occupied, two of them are still occupied by IDPs from Eastern Ghouta (6,405 IDPs), one IDP site is occupied by IDPs from Foah and Kafraya (704 IDPs) and remaining one is occupied by IDPs from Rukban (375 IDPs).
- The shelter sector contributed to the formulation of North-West Syria Readiness Plan. The shelter sector plans to target 155,000 individuals through a range of shelter activities ranging from installation of shelter kits to rehabilitation of collective shelters and tents installation. The available shelter items can meet the shelter needs of 50,000 individuals.
- The shelter sector participated in Deir Ez-Zour workshop (23rd to 25th July) that was organized by MoLAE. The workshop discussed/ identified the needs and response plan for three cities in the Governorate: Deir Ez-Zour, Mayadeen, and Bukamal. The Governorate with support from UN-HABITAT mapped out damages in these cities. Moreover, information on returnee population and number of people who intend to return in the various neighborhoods of these three cities, level of damage of buildings and infrastructural services in each neighborhood was shared. The planned response by the shelter sector partners are rehabilitation of damaged houses, distribution of shelter kits and capacity buildings.
- Shelter sector attended a 3 days Gender with Age Marker (GAM) ToT. The sector plans to organize an orientation session for the shelter sector partners on the 12th of September. GAM is a new tool that replaces the gender marker that has been used until last year. The new tool will allow sector partners to conduct self-evaluation of their project and to measure how much it accounts for gender and age aspects.

## OVERALL FIGURES

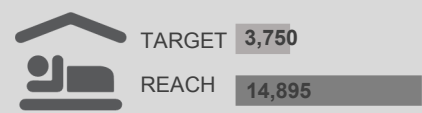


Total no. of people covered with emergency and durable shelter support in Syria as of August 2018

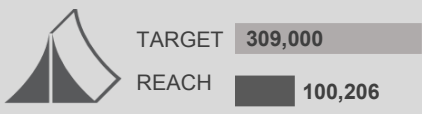


NUMBER OF PEOPLE COVERED WITH VARIOUS SHELTER SUPPORTS

### SEASONAL SHELTER PROVISION



### EMERGENCY SHELTER PROVISION



### EMERGENCY SHELTER REHABILITATION



### DURABLE SHELTER SUPPORT





## GAPS AND CHALLENGES

- Access and safety are the key challenges in some parts of the country as well as partner capacity and heavy processes along with funding constraints;
- Increasing needs, diminishing coping capacities of both the IDPs and host communities, and limited financial resources of the government to provide shelter compensation require sector partners to scale up operational presence;
- Shelter and infrastructure needs are huge and the Shelter Sector partners collectively do not have capacity to meet all the needs;
- Issues related to the loss of occupancy documents deprived some population from accessing shelter supports;
- Opportunities for systematic field-based data collection remain very limited due to access or authorization restrictions, resulting in incomplete needs analysis in some areas.

**CRISIS BACKGROUND:** The crisis in Syrian Arab Republic that started in March 2011 has transformed into a complex emergency that has displaced around 6.2 million people in various parts of the country. As per the 2018 Humanitarian Needs Overview, around 13.1 million people are in need of humanitarian assistance of which around 4.3 million people are in need of shelter support and other multi-sectorial assistance as they continue to struggle in an unsafe and uncertain environment. Due to the protracted nature of the hostilities, many of both displaced and host communities become more vulnerable and their ability to cope and find safe and durable shelter solutions have been greatly affected. The humanitarian community has been challenged to both provide emergency and life-saving shelter solutions while building back community cohesion and resilience through provision of adequate shelter assistance.

### Shelter Sector Coordination Team

Pankaj Kumar Singh, Shelter Sector Coordinator ([singhpa@unhcr.org](mailto:singhpa@unhcr.org))  
Bareaa Alkafre, Asst. Sector Officer ([alkafre@unhcr.org](mailto:alkafre@unhcr.org))  
Muhammad Shazad, IM Officer ([shahzadm@unhcr.org](mailto:shahzadm@unhcr.org))  
Maha Shaaban, IM Associate ([shabanm@unhcr.org](mailto:shabanm@unhcr.org))  
Ashraf Zedane, IM Associate - Aleppo ([zedane@unhcr.org](mailto:zedane@unhcr.org))



## HUMANITARIAN STORY



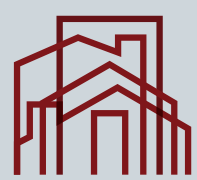
### PUI Rehabilitation of partially damaged apartments

Hussain, a 21 years old man from Al Deirkhbiah town, Rural Damascus governorate and his family was forced to displace from their hometown due to the crisis. In 2016, Hussain lost his parents in a mortar attack while working in a farm, which force him to discontinue his education and find work to support himself and younger siblings. Upon return to his hometown after the situation improved, he has to work hard to earn a living and repair his damaged house.

PUI through the rehabilitation of partially damaged apartments in Dierkhbiah supporting the returnees better access to safe long-term shelters that ensures their dignity and safety and alleviate the burden of renting accommodation.

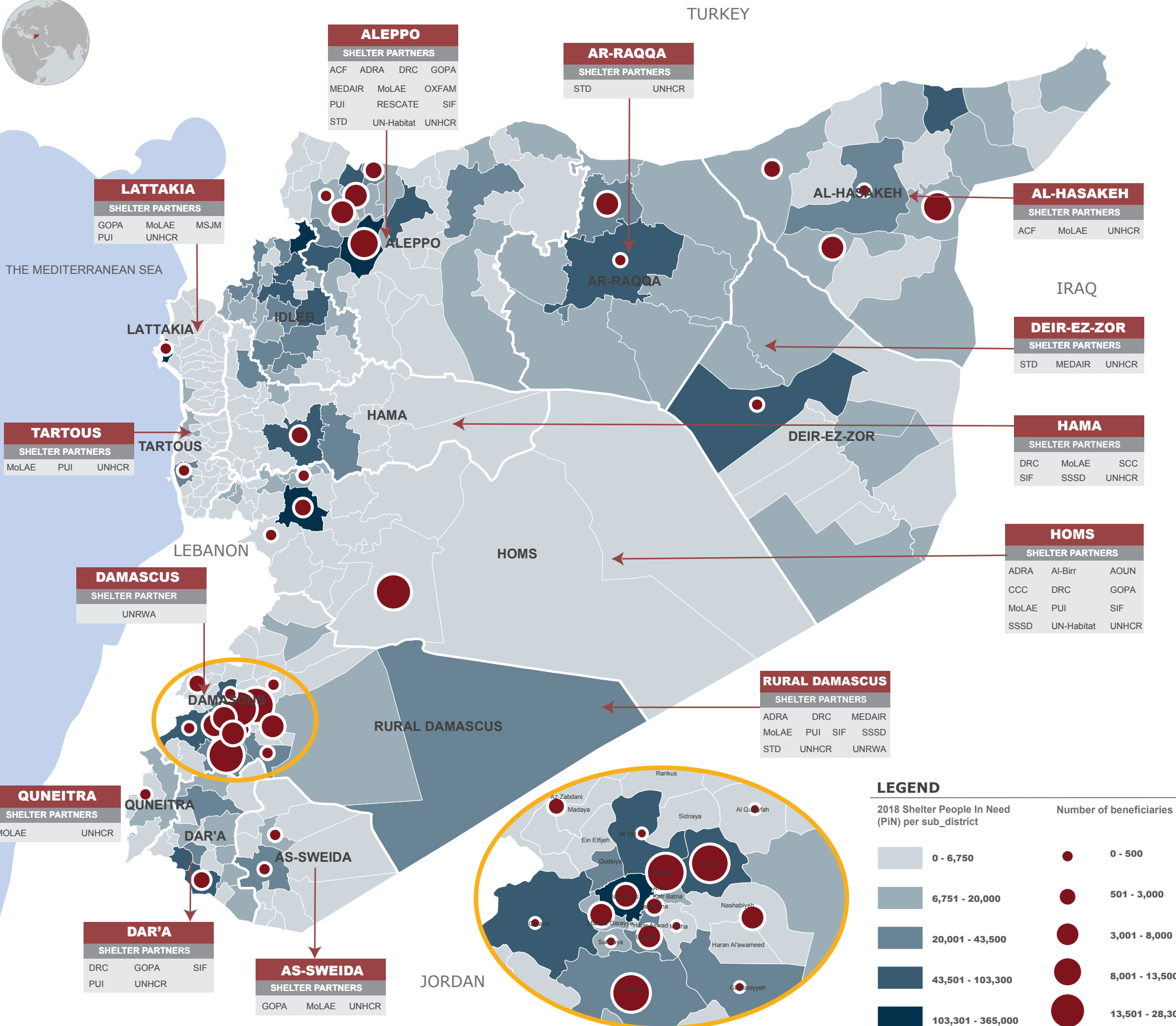
Hussain was one of the selected beneficiaries during the needs assessment for PUI shelter interventions. Upon rehabilitation of his apartment, Hussain and his younger siblings will have a safe and dignified living place.





# SYRIA: SHELTER SECTOR RESPONSE SNAPSHOT

Reporting Period: January - August 2018



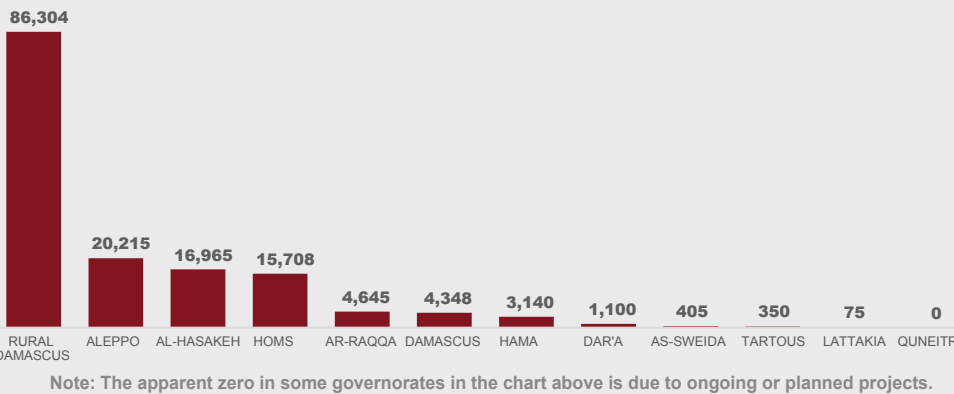
## TOTAL BENEFICIARIES COVERED

4.3 M OVERALL PEOPLE IN NEED (PIN)  
1.4 M TARGETED PIN / HRP 2018

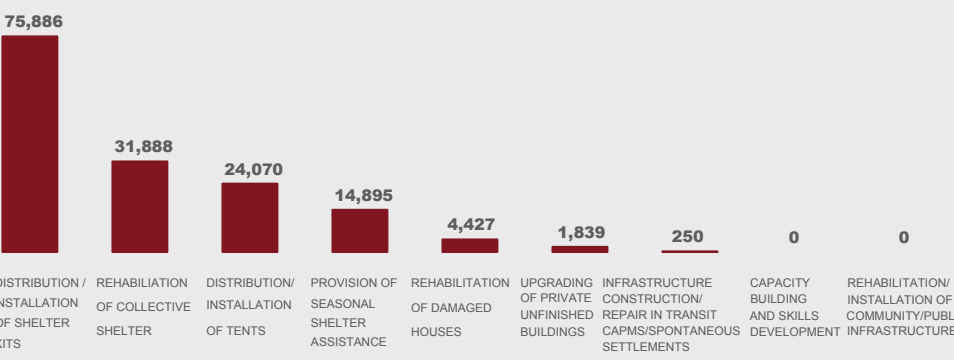
# 153,255

17% OF 864,296 TARGETED PIN (IN SHELTER) BY SYRIA HUB

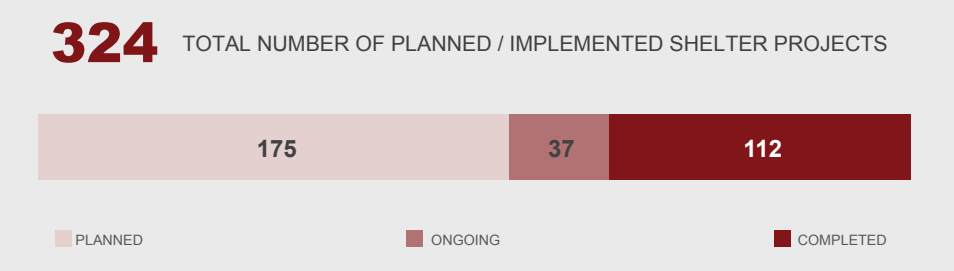
## BENEFICIARIES COVERED PER GOVERNORATE



## BENEFICIARIES COVERED BY TYPE OF SUPPORT



## NO. OF SHELTER PROJECTS PER STAGE



## SHELTER SECTOR PARTNERS

| CO-LEAD AGENCIES |       |            |          |
|------------------|-------|------------|----------|
| ACF              | ADRA  | Al-Birr    | AL Ihsan |
| AI Taalouf       | AOUN  | CCC        | DRC      |
| GOPA             | IOM   | MEDAIR     | MSJM     |
| NRC              | OXFAM | PUI        | RESCATE  |
| RSRP             | SARC  | SCC        | SIF      |
| SSSD             | STD   | UN-Habitat | UNRWA    |