



UNHCR
The UN
Refugee Agency



SYRIA IDP OPERATIONS 2016

Produced By UNHCR Syria Reporting Unit

syrdareporting@unhcr.org

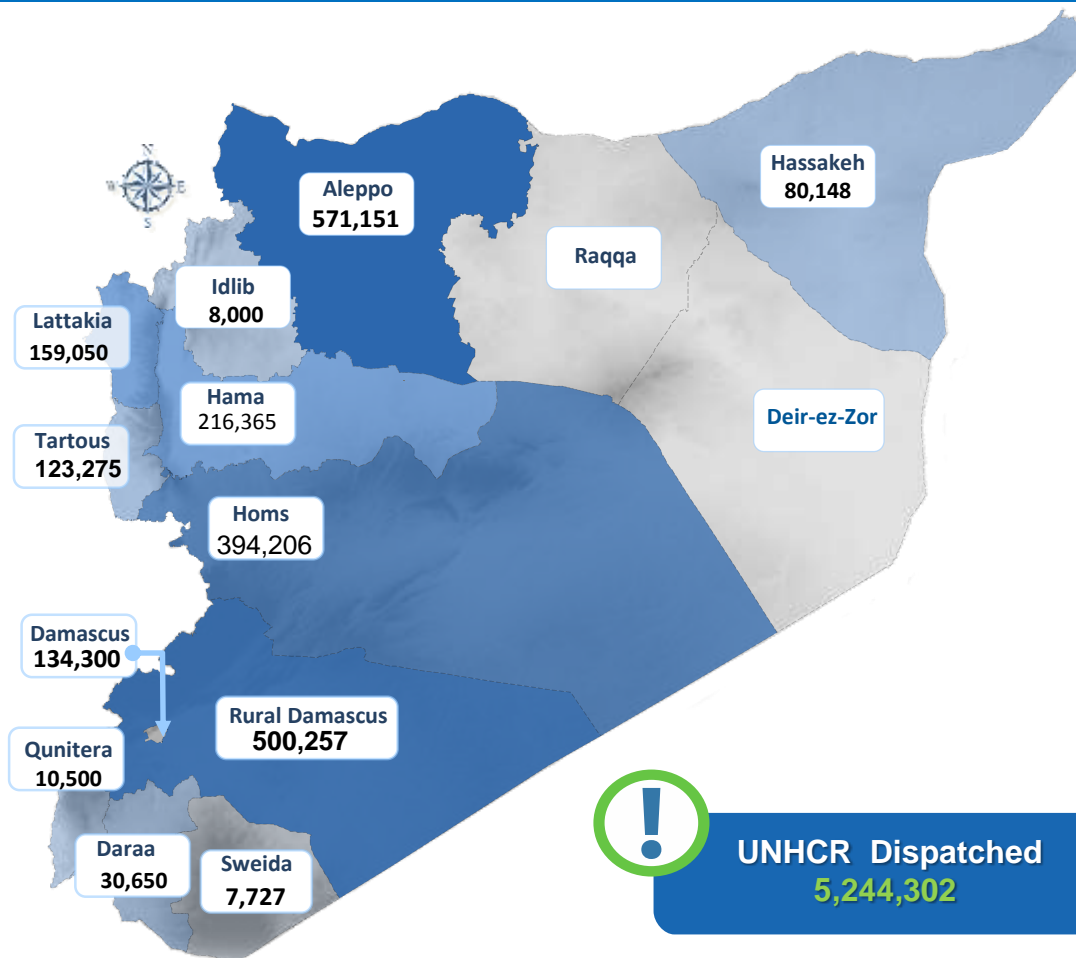
Valid as of 14/11/2016



CORE RELIEF ITEMS (CRIs) IN 2016

CRI Dispatch in 2016, amounts to **2,235,629** individuals

2,235,629 Beneficiaries of CRI by location



Distribution Methodology :

CRIs are distributed in accordance with the needs assessed by UNHCR staff and by implementing partners on the ground.

In areas where everything is needed families receive a CRI Family Kit. The composition of which is:

CRI Family Kit	
3 Mattresses	5 Blankets
3 Sleeping mats	2 Jerry can
Diapers	Sanitary napkins
1 Kitchen Set	1 Hygiene Kit
1 Plastic Sheet	
Winter: 1 extra plastic sheet +1 family winter clothing kit	
Supplementary Items: (Targeting Those Most in Need) Solar Lamps, Sleeping Bags, Winter Jackets , Thermal Underwear	

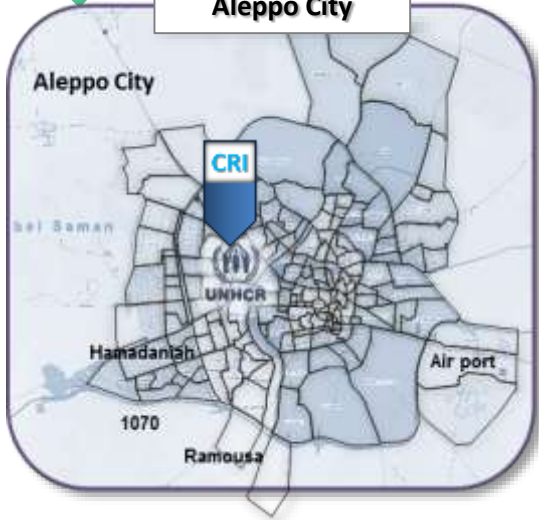
2,235,629 Beneficiaries

Valid as of 14/11/2016

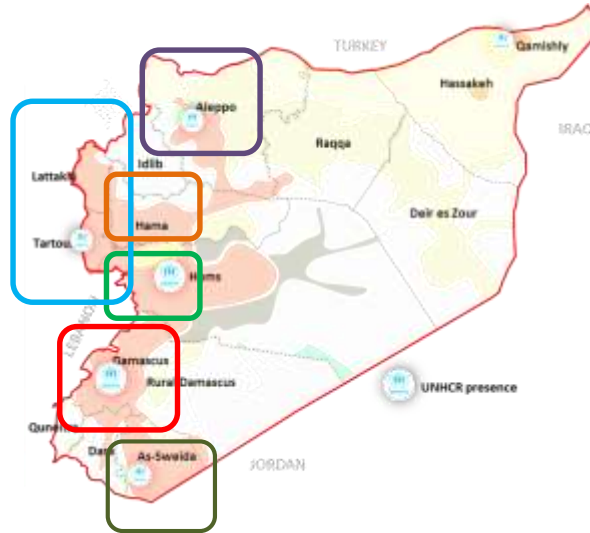
CORE RELIEF ITEMS (CRIs) IN 2016

Main Locations reached with CRIs between 8 Nov to 14 Nov 2016

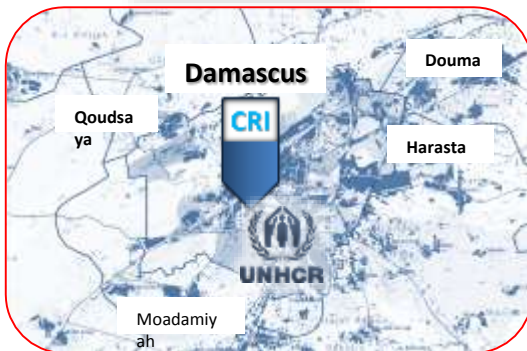
Aleppo City



Hama City



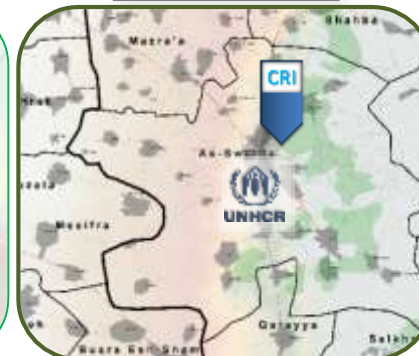
Damascus City



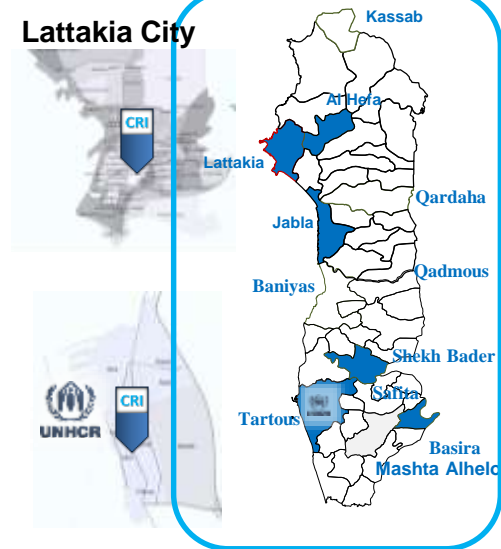
Homs City



Sweida City



Lattakia City



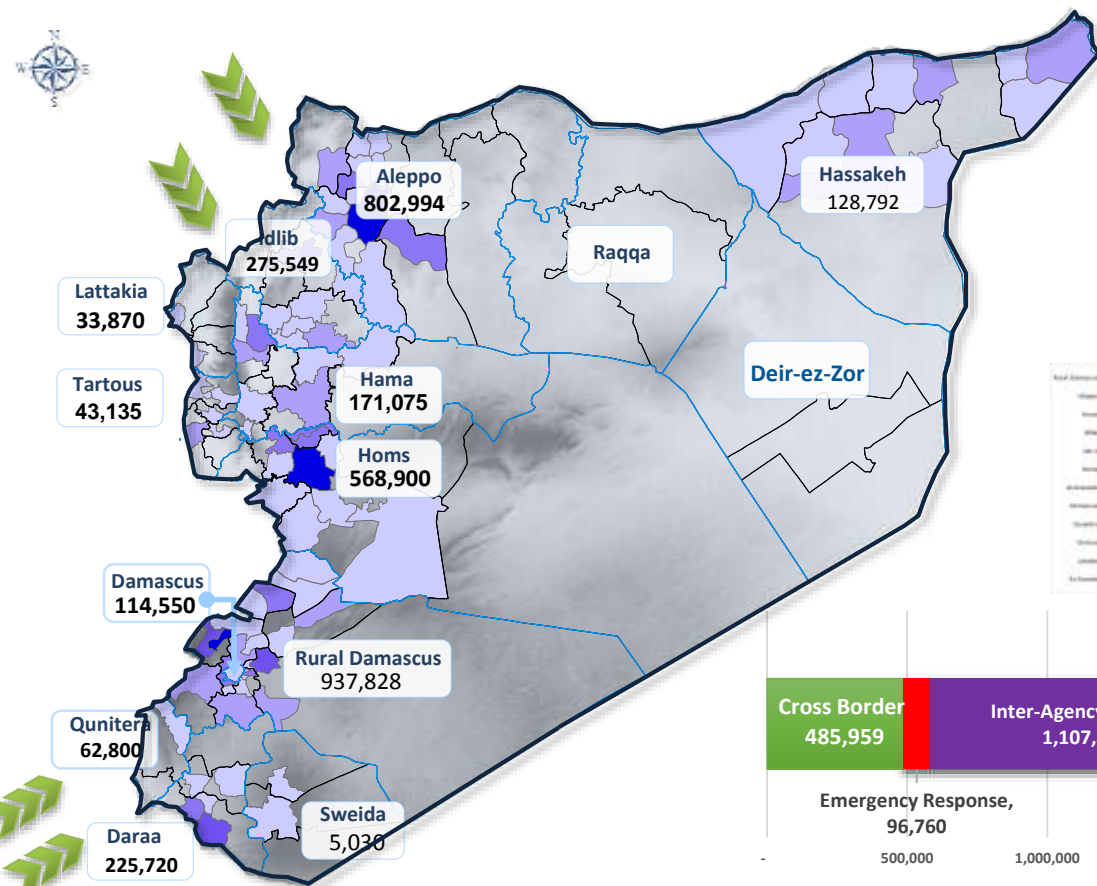


CORE RELIEF ITEMS (CRIs) IN 2016

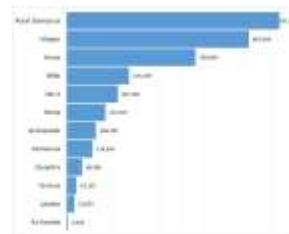
UNHCR Jan – Oct 2016

CRI Distribution in 2016, amounts to **3,375,828** individuals

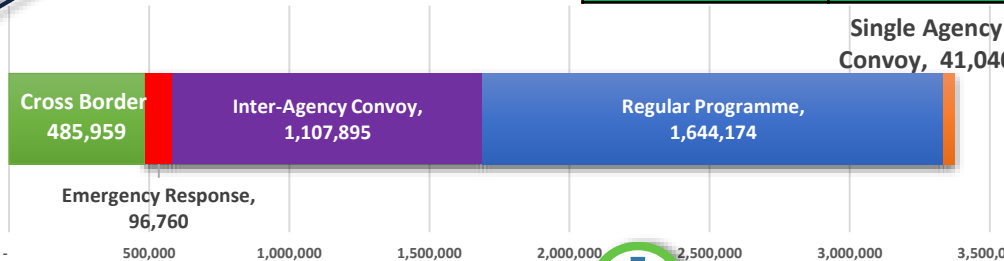
3,375,828 Beneficiaries of CRI by location



Gov	BSG	HTR	Grand Total
Aleppo		67,040	67,040
Al-Hasakeh		76,371	76,371
Dar'a		10,825	10,825
Hama		32,000	32,000
Homs	115,165	336,880	452,045
Idleb	65,800	2,500	68,300
Rural Damascus	305,650	188,280	493,930
Grand Total	486,615	713,896	1,200,511



Row Labels	Cross Border
Quneitra	38,125
Aleppo	39,250
Dar'a	199,085
Idleb	209,499
Grand Total	485,959



Locations approximate. For graphical representation only. Not for detailed planning. Boundaries and locations shown do not imply official acceptance by the United Nations



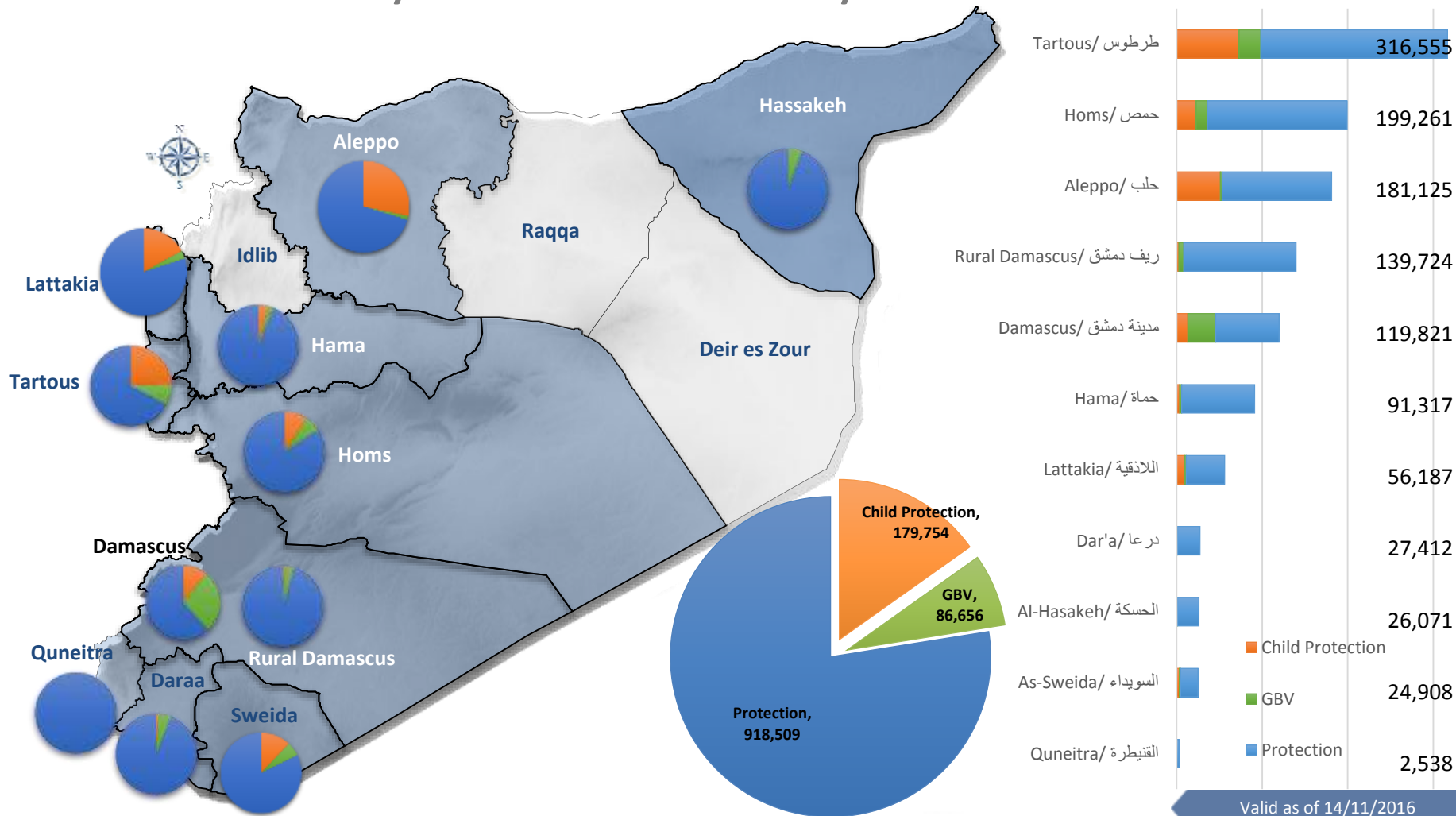
UNHCR Distributed
4,430,817 CRIs



PROTECTION IN 2016

1,184,919 Beneficiaries

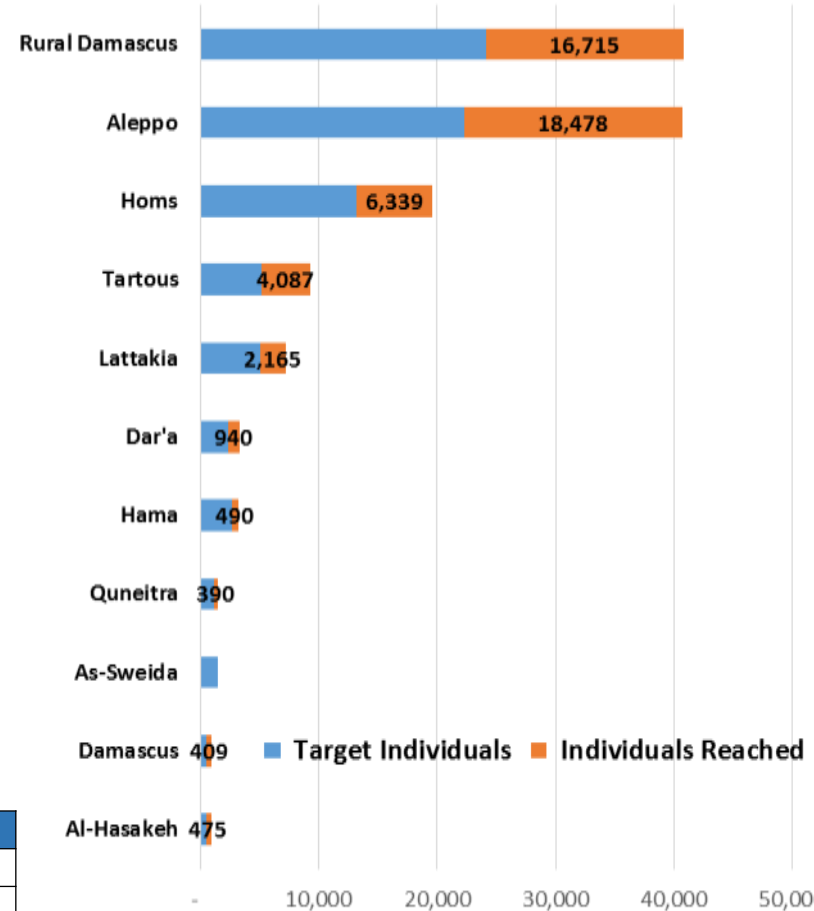
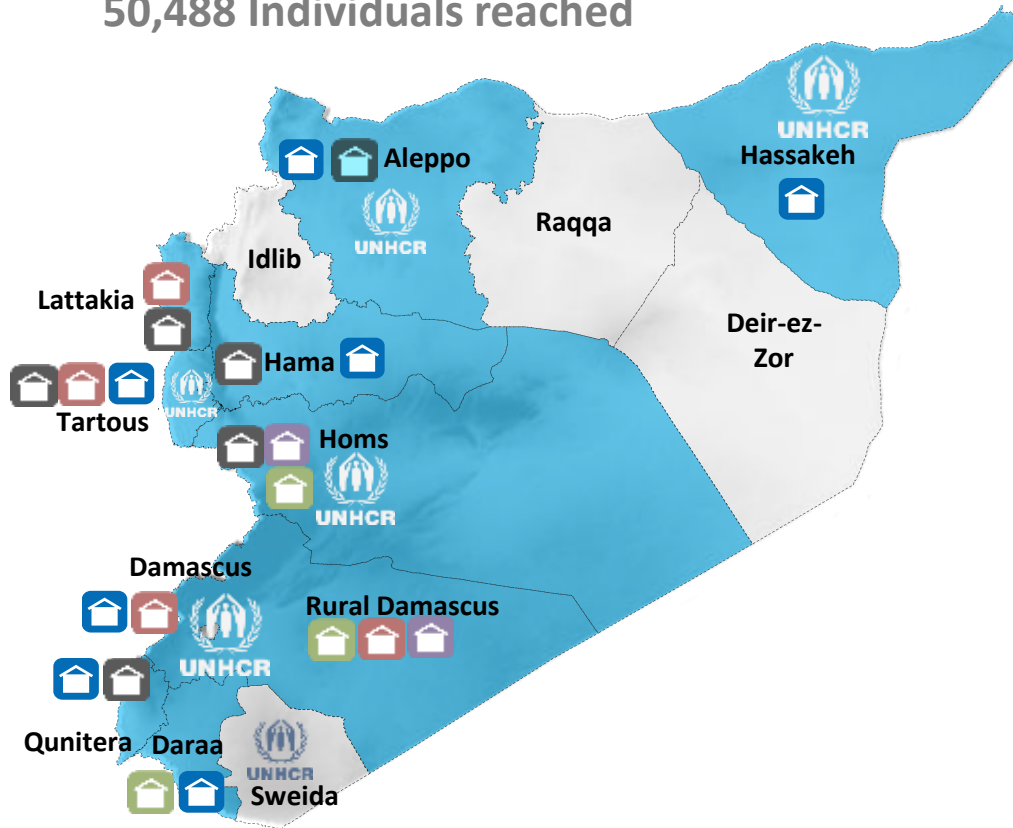
Reached by Protection & Community Services Interventions





UNHCR SHELTER Activities 2016

50,488 Individuals reached



Ongoing and completed Activities

50,488 Individuals

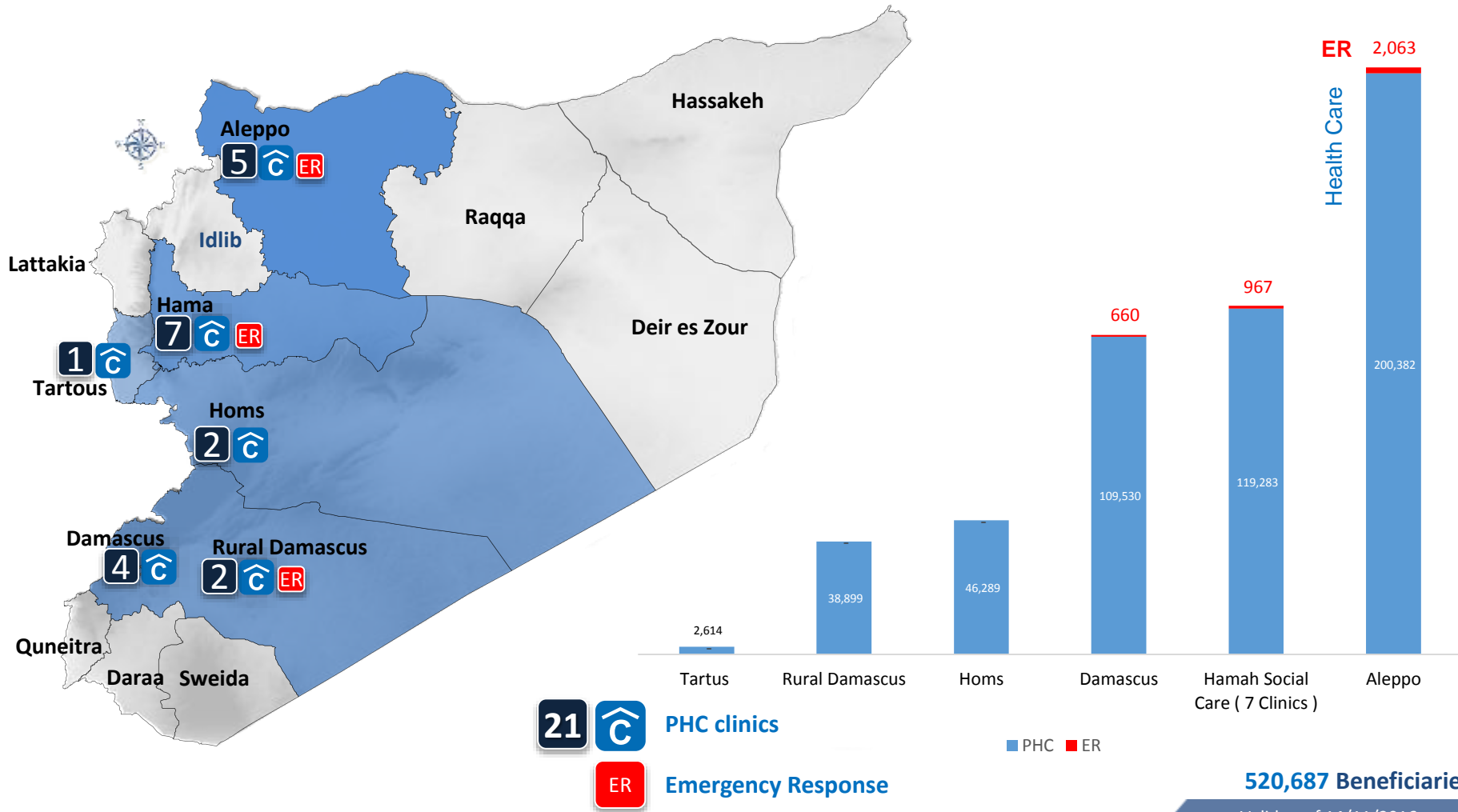
Valid as of 08/11/2016

Activity	Target Individuals	Individuals Reached
Collective Shelter Rehabilitation	6,638	1,890
Upgrade Collective Shelters	5,496	4,066
Owner-Oriented Shelter Support	11,495	5,019
Private Shelter upgrade	26,714	17,285
Support to O&M unites	9,660	3,900
Provision Shelter Kits	18,328	18,328
Grand Total	78,331	50,488



HEALTH IN 2016

520,687 Beneficiaries Have access to Health Care



21 **PHC clinics**

Emergency Response

■ PHC ■ ER

520,687 Beneficiaries

Valid as of 14/11/2016

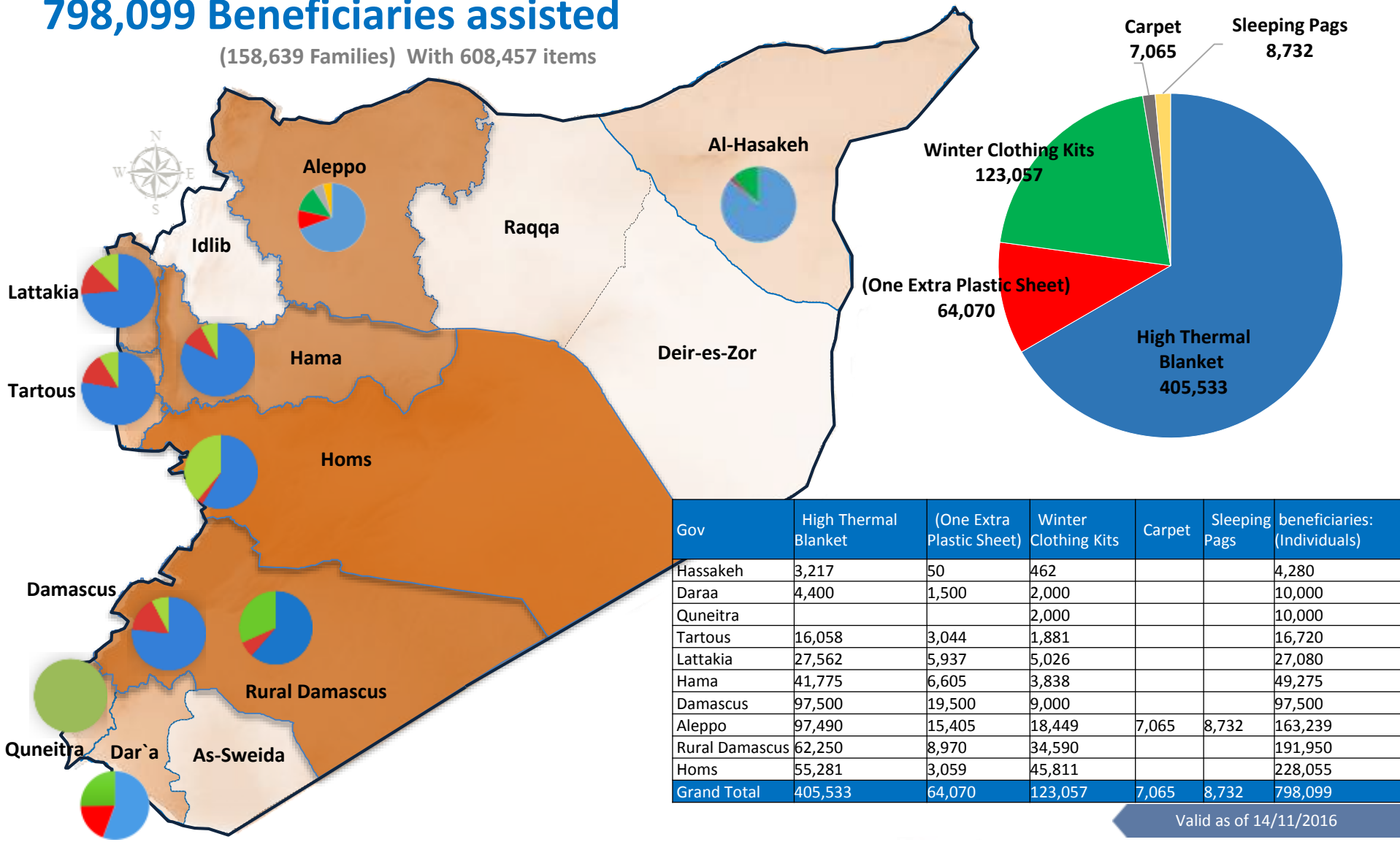
Al-Nabek Clinic (rural Damascus) & Alzahra Clinic in Homs were handed over to IMC.



WINTERIZATION PROGRAMME 2016

798,099 Beneficiaries assisted

(158,639 Families) With 608,457 items



Gov	High Thermal Blanket	(One Extra Plastic Sheet)	Winter Clothing Kits	Carpet	Sleeping Pags	beneficiaries: (Individuals)
Hassakeh	3,217	50	462			4,280
Daraa	4,400	1,500	2,000			10,000
Quneitra			2,000			10,000
Tartous	16,058	3,044	1,881			16,720
Lattakia	27,562	5,937	5,026			27,080
Hama	41,775	6,605	3,838			49,275
Damascus	97,500	19,500	9,000			97,500
Aleppo	97,490	15,405	18,449	7,065	8,732	163,239
Rural Damascus	62,250	8,970	34,590			191,950
Homs	55,281	3,059	45,811			228,055
Grand Total	405,533	64,070	123,057	7,065	8,732	798,099