

DRAFT AFTER-ACTION ENVIRONMENTAL ASSESSMENT MKARNS



U.S. Army Corps of Engineers
Tulsa District

PRESENTER: Justyss Watson



MISSION / PEOPLE / TEAMWORK



US Army Corps
of Engineers®



PURPOSE OF PRESENTATION



Inform the public and stakeholders that an After-Action Environmental Assessment (EA) for the Webbers Falls Pool and Robert S. Kerr Pool Emergency Dredging and Disposal has been drafted;

Define what an Environmental Assessment is;

Provide instructions on how to participate in the Environmental Assessment process;

Encourage participation; and

Provide links to the Draft documents.



US Army Corps
of Engineers



BACKGROUND



Record rainfall in May and June 2019 in southern and southeastern Kansas and in northeastern Oklahoma caused approximately 15 Corps of Engineers reservoirs in the Upper Arkansas River Basin, Verdigris River Basin, and Grand (Neosho) River Basin (all within Tulsa District), to fill or exceed the top floodpool elevation.

While Tulsa District worked diligently to lessen the effects of flooding downstream, significant and in some cases catastrophic flooding was unavoidable.

River flows -- measured in cubic feet per second (CFS) -- were overwhelming within large portions of the river system. Below Keystone Dam just west of Tulsa, the rate of river flow approached 300,000 CFS at its maximum volume.



US Army Corps
of Engineers



BACKGROUND CONTINUED



Approximately 50 miles southeast of Tulsa, Oklahoma on the Arkansas River below Muskogee, Oklahoma -- just downstream from the Arkansas River confluence with the Verdigris River and the Grand (Neosho) River at the location known locally as "Three Forks" -- the flow eclipsed 600,000 CFS in volume.

The Arkansas River within the Webbers Falls pool, at a sustained volume of well over 600,000 CFS over a duration of more than a week, was carrying an enormous volume of sediment which was eroded from the three upstream feeder river basins and was passed through upstream dams and into the Navigation System, where much of it was subsequently deposited.



US Army Corps
of Engineers



BACKGROUND CONTINUED



Complicating factor that contributed:

- On May 23, 2019 two fully-loaded barges moored in the Muskogee area tore loose and were carried downstream, where they collided with Webbers Falls Lock and Dam and sunk.
- After sinking the barges were forced against three of the structure's gates which had been fully open (as were all other gates) in order to pass the high river flow; because the two barges impeded the operation of the gates, those gates could not be closed.
- Removal of the barges/operation of the Webbers Falls gates was dependent on the emergency dredging action, specifically the portion within the Robert S. Kerr pool.
- A tow barge was required to perform the extraction of the sunk barges, and the tow barge had to travel the channel upstream from Arkansas through the Robert S. Kerr pool.



US Army Corps
of Engineers *



PURPOSE OF NEPA



The purpose of this project is to analyze impacts to the socio-economic and natural environment resulting from implementation of the Emergency Action (declaration).

The goals of the document will be to ensure compliance with NEPA and appropriate environmental laws, regulations, agency policies and guidance, and executive orders.



US Army Corps
of Engineers *



PURPOSE OF NEPA



Applies to federal actions that affect the environment such as dredging operations and disposal.

Requires federal agencies to **CONSIDER** and **DOCUMENT** the environmental impacts of their proposed actions as part of an agency's **OVERALL** planning and decision-making.

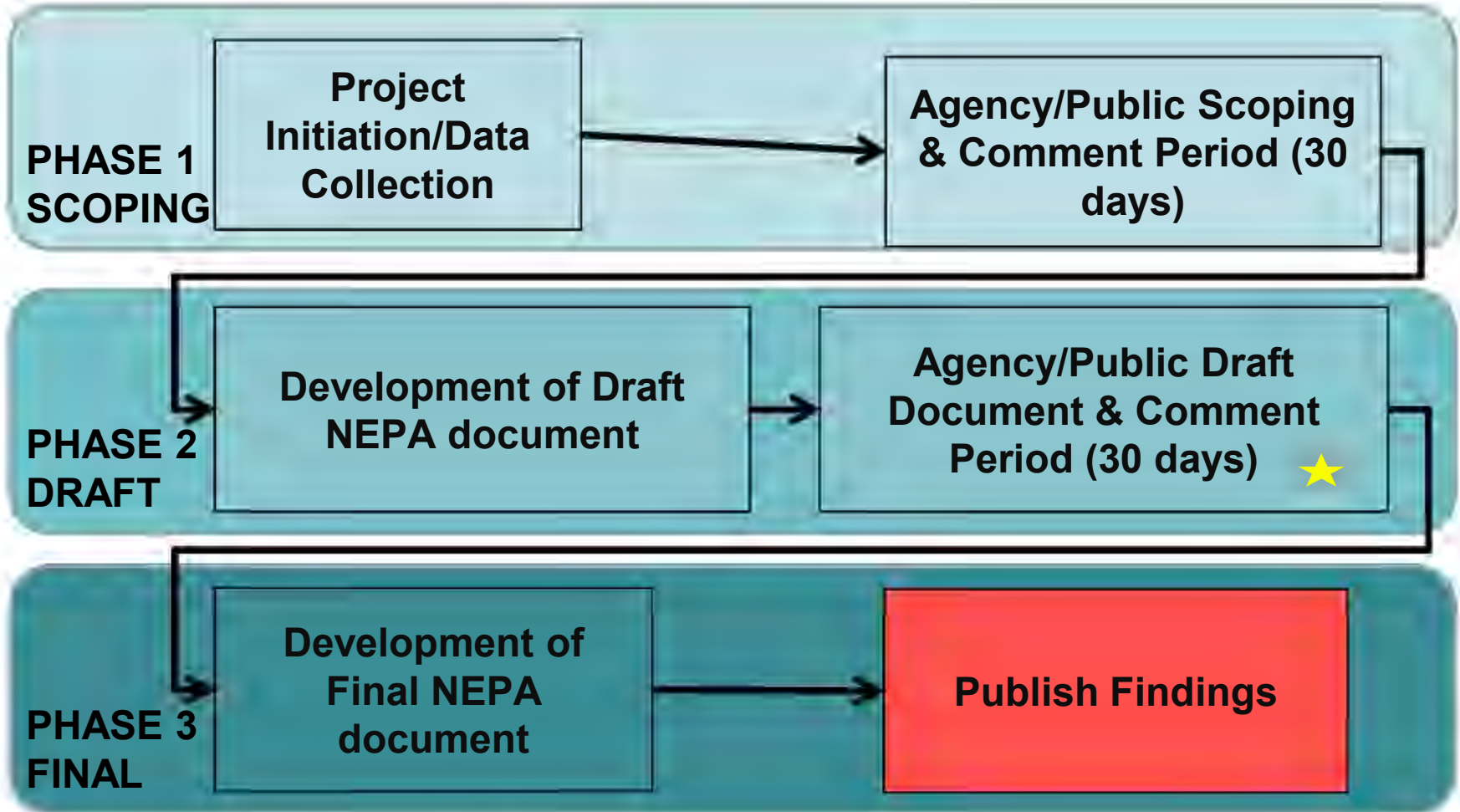
Requires federal agencies to cooperate with other federal, state, and local governments as well as with organizations and the public.



US Army Corps
of Engineers



NEPA PROCESS




Where we are today

ALL DREDGE AND DISPOSAL AREAS



- INDEX GRID
- DREDGE AREA
- STUDY AREA
- DMMP DISPOSAL SITE
- ADVERSE IMPACT**
- BOTTOMLAND HARDWOOD DISPOSAL SITE
- EMERGENT WETLAND DISPOSAL SITE
- FORESTED WETLAND DISPOSAL SITE
- OPEN WATER DISPOSAL SITE



**U.S. ARMY CORPS OF ENGINEERS
TULSA DISTRICT**

MCCLELLAN-KERR ARKANSAS RIVER NAVIGATION SYSTEM

AFTER ACTION ENVIRONMENTAL ASSESSMENT

INDEX SHEET

0 3.75 7.5 15 Miles

| | |
|---------------------|-------------------------|
| DATE: MARCH 2021 | MAP NO. MKARNS-EA-00 |
|---------------------|-------------------------|

PROJECT AREAS



| Location | River Mile | Cubic Yards Dredged | Disposal Location | Acres Impacted by Disposal | NEPA Approved Disposal Location |
|--------------------|-------------|---------------------|----------------------------|----------------------------|---------------------------------|
| Sandtown Bottom | 346-349 | 778,330 | Open Water | 97.7 | No |
| | | | Emergent Wetland | 16.4 | No |
| Below Lock 16 | 366 | 70,322 | Bottomland Hardwood Forest | 10 | No |
| Spaniard Creek | 375 | 110,635 | Open Water | 146 | No |
| | | | Open Water | 1.3 | No |
| Salt Creek | 380 | 259,322 | Emergent Wetland | 7.4 | No |
| | | | Forested Wetland | 2.4 | No |
| Stoney Point | 355 | 76,444 | Open Water | 4.9 | No |
| | | | Emergent Wetland | 7.6 | No |
| San Bois Creek | 6.5 - 8 | 161,639 | Open Water | 30 | No |
| Kerr Lake (RM 343) | 343 | 55,586 | Open Water | 8.3 | No |
| Three Forks | 394.5 – 395 | 23,578 | Disposal Site 16B | 14.6 | Yes |
| RM 400 | 400 | 13,875 | Disposal Site 16A-1 | 14 | Yes |
| Below Lock 18 | 421 | 35,688 | Disposal Site 17A | 30.3 | Yes |
| Above Lock 18 | 422 – 422.5 | 37,367 | Disposal Site 18C | 11.6 | Yes |
| Catoosa | 445 | 14,525 | Disposal Site 18B | 11.5 | Yes |
| Below Lock 14 | 319 | 21,578 | Disposal Site 13A | 1.5 | Yes |

Total Dredged: 1.6 million cubic yards



US Army Corps of Engineers *



HABITAT IMPACTS



| Location | River Mile | Cubic Yards Dredged | Disposal Location | Acres Impacted by Disposal | NEPA Approved Disposal Location |
|--------------------|------------|---------------------|----------------------------|----------------------------|---------------------------------|
| Sandtown Bottom | 346-349 | 778,330 | Open Water | 97.7 | No |
| | | | Emergent Wetland | 16.4 | No |
| Below Lock 16 | 366 | 70,322 | Bottomland Hardwood Forest | 10 | No |
| Spaniard Creek | 375 | 110,635 | Open Water | 146 | No |
| | | | Open Water | 1.3 | No |
| Salt Creek | 380 | 259,322 | Emergent Wetland | 7.4 | No |
| | | | Forested Wetland | 2.4 | No |
| Stoney Point | 355 | 76,444 | Open Water | 4.9 | No |
| | | | Emergent Wetland | 7.6 | No |
| San Bois Creek | 6.5 - 8 | 161,639 | Open Water | 30 | No |
| Kerr Lake (RM 343) | 343 | 55,586 | Open Water | 8.3 | No |



US Army Corps of Engineers



SALT CREEK



| Salt Creek | |
|------------------|-----|
| Navigation Mile | 380 |
| Emergent Wetland | 7.4 |
| Forested Wetland | 2.4 |
| Open Water | 1.3 |



**U.S. ARMY CORPS
 OF ENGINEERS
 TULSA DISTRICT**

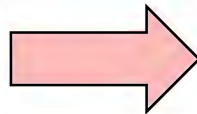
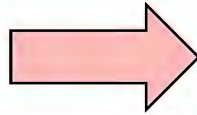
**MCCLELLAN-KERR ARKANSAS
 RIVER NAVIGATION SYSTEM**
**AFTER ACTION ENVIRONMENTAL
 ASSESSMENT**



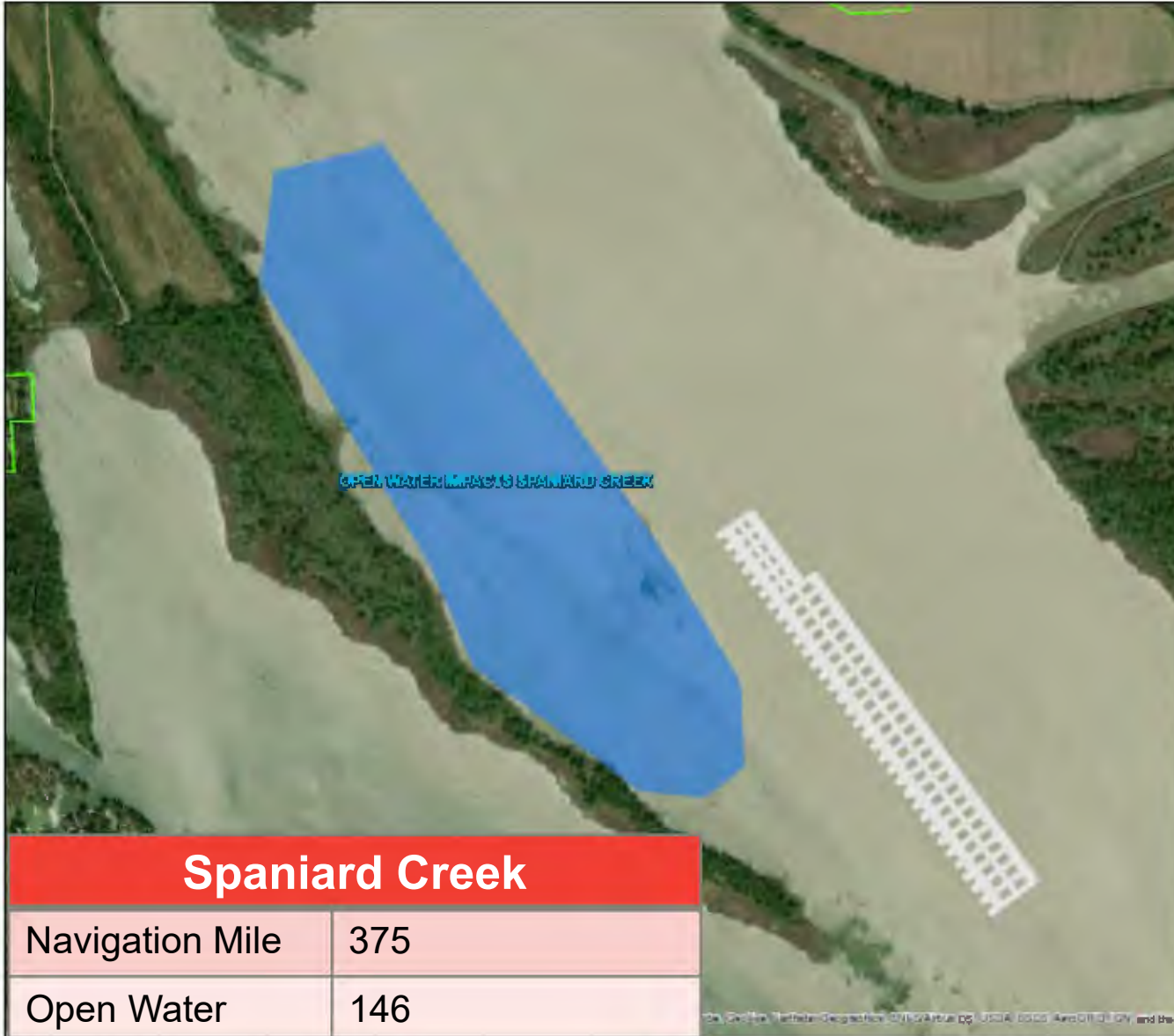
| | |
|----------------------------|--------------------------------|
| DATE: MARCH 2021 | MAP NO: MKARNS-EA-05 |
|----------------------------|--------------------------------|

Source: USGS Digital Data, GeoEye, Microsoft Imagery, 2010, ESRI, Garmin, IGN, and the Private Company

SALT CREEK



SPANIARD CREEK



- DREDGE AREA
- STUDY AREA
- ADVERSE IMPACT AREA
- OPEN WATER DISPOSAL SITE



**U.S. ARMY CORPS
OF ENGINEERS
TULSA DISTRICT**

**MCCLELLAN-KERR ARKANSAS
RIVER NAVIGATION SYSTEM**
**AFTER ACTION ENVIRONMENTAL
ASSESSMENT**



INDEX SHEET 06
DATE: MARCH 2021 MAP NO: MKARNS-EA-06

SPANIARD CREEK





US Army Corps
of Engineers®



BELOW LOCK 16



 DREDGE AREA
 ADVERSE IMPACT AREAS
 BOTTOMLAND HARDWOOD DISPOSAL SITE

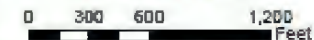


**U.S. ARMY CORPS
 OF ENGINEERS
 TULSA DISTRICT**

**MCCLELLAN-KERR ARKANSAS
 RIVER NAVIGATION SYSTEM**

**AFTER ACTION ENVIRONMENTAL
 ASSESSMENT**

INDEX SHEET 07



DATE:
MARCH 2021

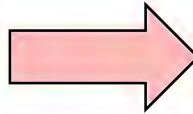
MAP NO.
MKARNS-EA-07



Below Lock 16

| | |
|---------------------|-----|
| Navigation Mile | 380 |
| Bottomland Hardwood | 10 |

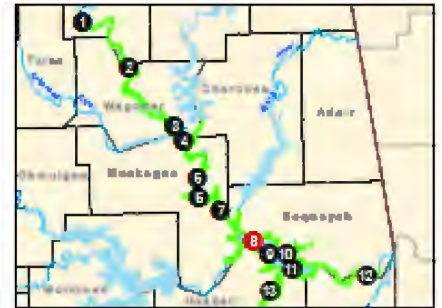
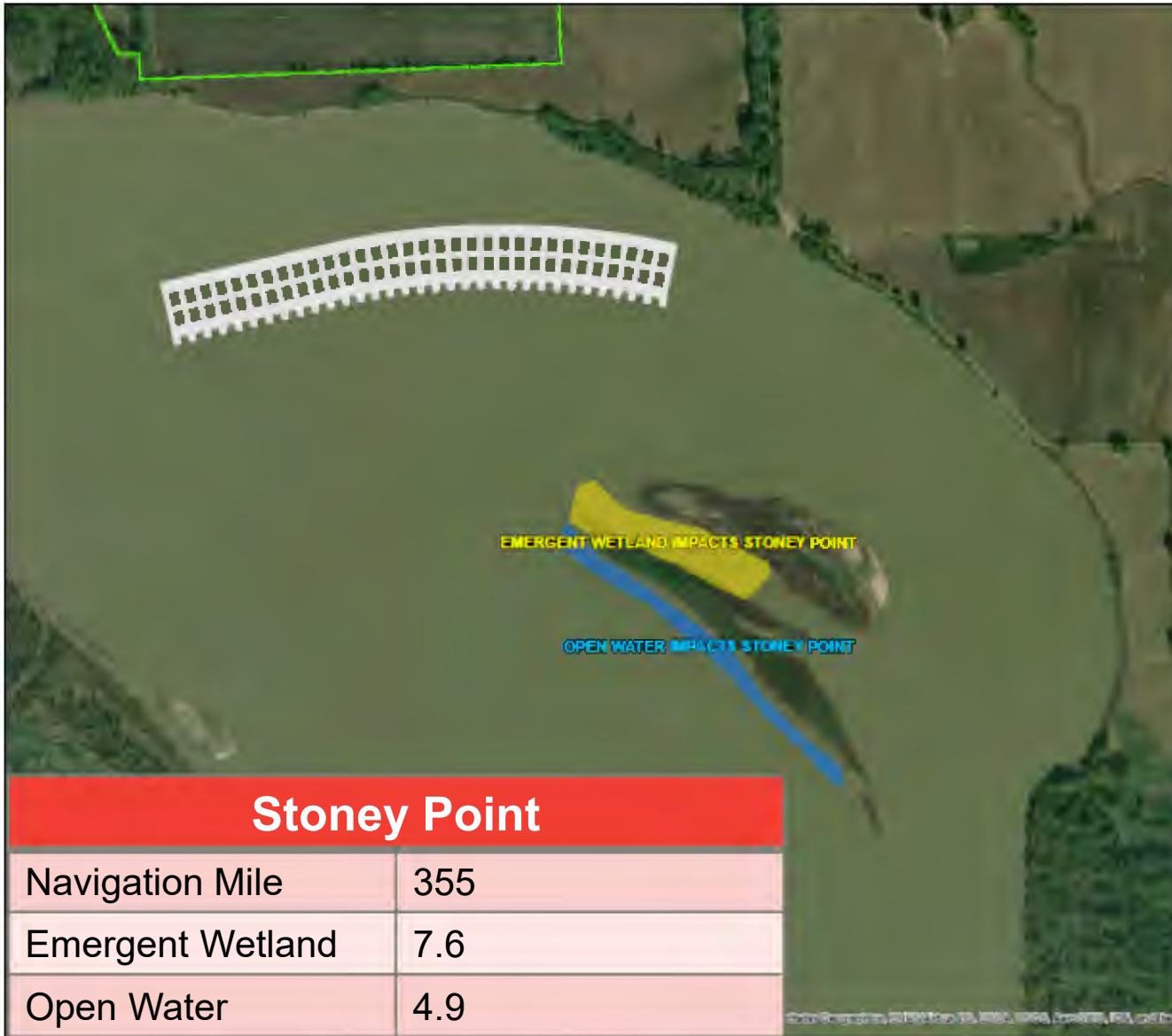
BELOW LOCK 16



US Army Corps
of Engineers®



STONEY POINT



- DREDGE AREA
- STUDY AREA
- ADVERSE IMPACT AREA:**
 - EMERGENT WETLAND DISPOSAL SITE
 - OPEN WATER DISPOSAL SITE

Stoney Point

| | |
|------------------|-----|
| Navigation Mile | 355 |
| Emergent Wetland | 7.6 |
| Open Water | 4.9 |

**U.S. ARMY CORPS OF ENGINEERS
TULSA DISTRICT**

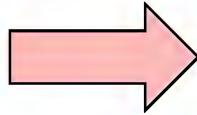
MCCLELLAN-KERR ARKANSAS RIVER NAVIGATION SYSTEM

AFTER ACTION ENVIRONMENTAL ASSESSMENT

INDEX SHEET 08

| | |
|---------------------|-------------------------|
| DATE: MARCH 2021 | MAP NO: MKARNS-EA-08 |
|---------------------|-------------------------|

STONEY POINT



SANDTOWN BOTTOM



Sandtown Bottom

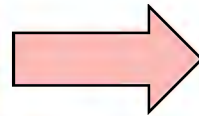
| | |
|------------------|---------|
| Navigation Mile | 346-348 |
| Emergent Wetland | 16.4 |
| Open Water | 97.7 |



US Army Corps
of Engineers®



SANDTOWN BOTTOM



KERR LAKE



- DREDGE AREA
- STUDY AREA
- ADVERSE IMPACT AREAS**
- OPEN WATER DISPOSAL SITE

**U.S. ARMY CORPS
OF ENGINEERS
TULSA DISTRICT**

MCCLELLAN-KERR ARKANSAS
RIVER NAVIGATION SYSTEM

AFTER ACTION ENVIRONMENTAL
ASSESSMENT

INDEX SHEET 11

| | |
|---------------------|-------------------------|
| DATE: MARCH 2021 | MAP NO. MKARNS-EA-11 |
|---------------------|-------------------------|

| Kerr Lake | |
|------------------|-----|
| Navigation Mile | 343 |
| Open Water | 8.3 |

KERR LAKE



SAN BOIS CREEK



- DREDGE AREA
- STUDY AREA
- ADVERSE IMPACT AREAS**
- OPEN WATER DISPOSAL SITE



**U.S. ARMY CORPS
OF ENGINEERS
TULSA DISTRICT**

MCCLELLAN-KERR ARKANSAS
RIVER NAVIGATION SYSTEM
AFTER ACTION ENVIRONMENTAL
ASSESSMENT

INDEX SHEET 13



| | |
|------------|--------------|
| DATE | MAP NO. |
| MARCH 2021 | MKARNS-EA-13 |

San Bois Creek

| | |
|-----------------|---------|
| Navigation Mile | 6.5 – 8 |
| Open Water | 30 |

SAN BOIS CREEK



TOTAL HABITAT IMPACTED FROM DISPOSAL



Emergent Wetland

- 31.4

Forested Wetland

- 2.4

Bottomland Hardwood Forest

- 10

Open Water

- 258.2



US Army Corps
of Engineers



TOTAL HABITAT PROPOSED FOR MITIGATION



Emergent Wetland

- 86.2 acres

Forested Wetland

- 20.7 acres

Bottomland Hardwood

- 49.9 acres

Open Water

- 0 acres

Additional Considerations

- Cultural Resources



US Army Corps
of Engineers



OPEN WATER



Open water disposal

- It is the viewpoint of USACE, that open water disposal is self-mitigating because sediment was simply moved from one location in the MKARNS to an adjacent location.
- The action created new interior least tern nesting habitat, wading bird habitat, and increased the degree of aquatic habitat heterogeneity relative to conditions before the flood.

Interior Least Tern (ILT) Habitat

- At the time of flooding, ILT was a listed species.
- Nesting habitat creation was a major focus of dredge disposal.



US Army Corps
of Engineers



CULTURAL RESOURCES



Cultural Resources Survey

- Surveys will be conducted on all proposed mitigation sites.
- If cultural resources are found, the portions of the site with the resource will be avoided.
- USACE does not expect to affect cultural resources as long as sites are avoided appropriately.

Timing

- Surveys are expected to take up to one month to complete.
- Final reports are expected to take at least 6 months.
- Surveys must be completed before mitigation construction can begin.



US Army Corps
of Engineers



REQUIRED MITIGATION ASPECTS



- Security Fencing & Gates
- Signs
- Grading/Contouring
- Planting
- Invasive Species Management

- Monitoring
- Adaptive Management
- Maintenance



US Army Corps
of Engineers



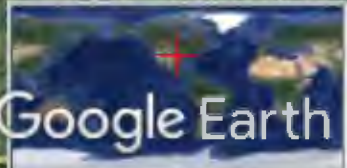




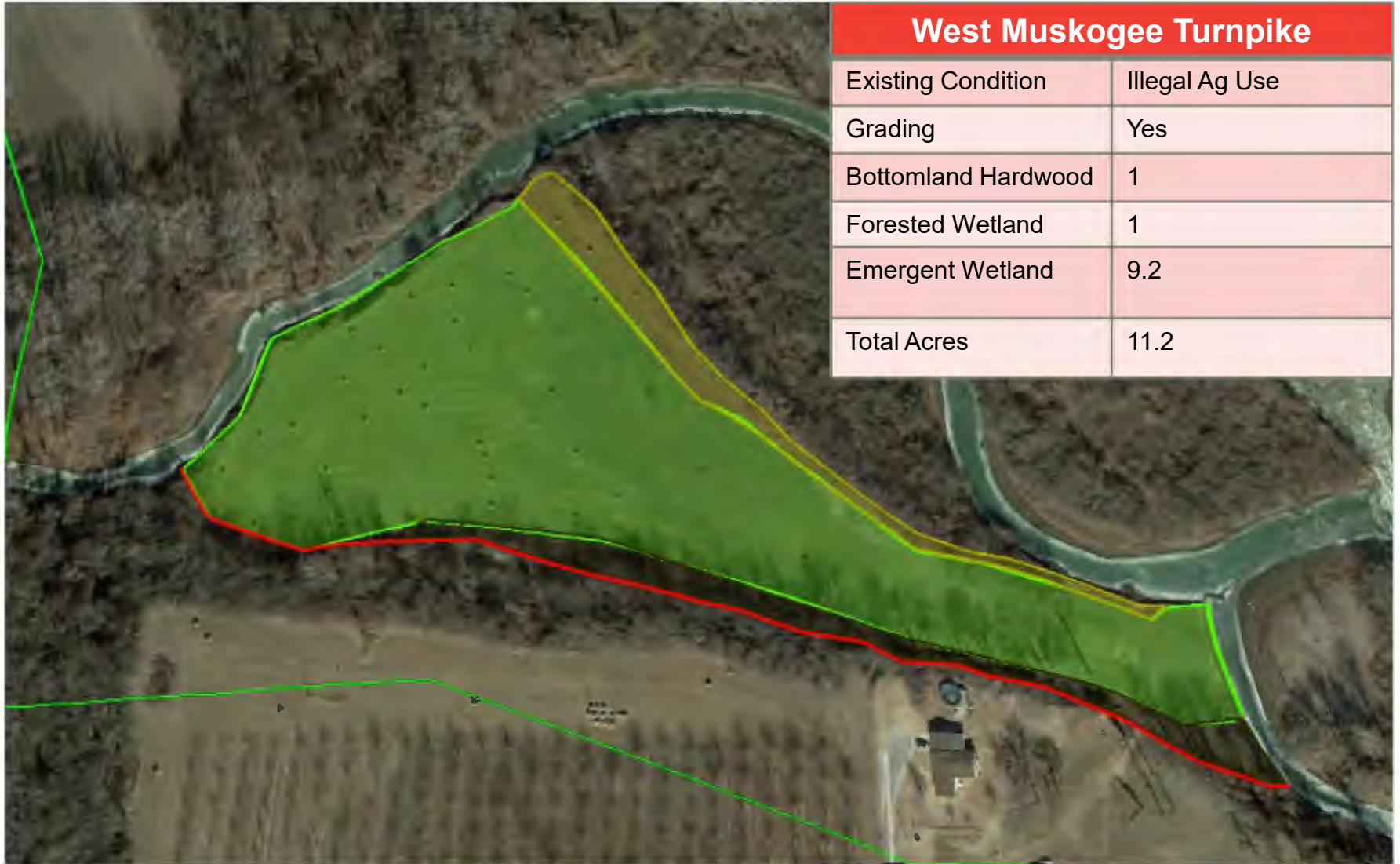
North I40

Drake Road

Missouri Pacific
Railroad West & East



WEST MUSKOGEE TURNPIKE



West Muskogee Turnpike

| Existing Condition | Illegal Ag Use |
|---------------------|----------------|
| Grading | Yes |
| Bottomland Hardwood | 1 |
| Forested Wetland | 1 |
| Emergent Wetland | 9.2 |
| Total Acres | 11.2 |

WEST MUSKOGEE TURNPIKE



E0960



| E0960 | |
|---------------------|---------------|
| Existing Condition | Leased Ag Use |
| Grading | Yes |
| Bottomland Hardwood | 13 |
| Forested Wetland | 4.7 |
| Emergent Wetland | 40.5 |
| Total Acres | 58.2 |

E0960



NORTH I40

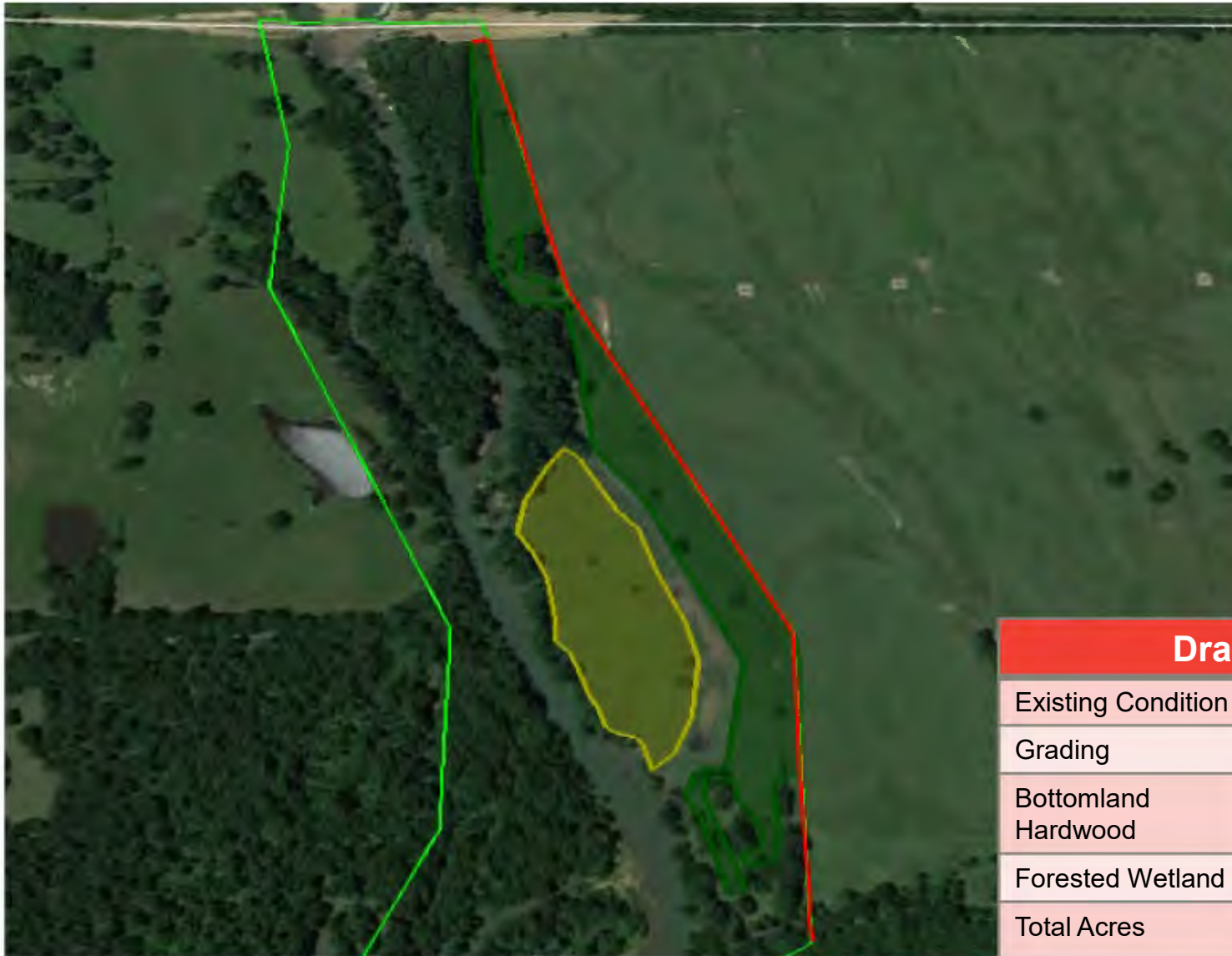


| North I40 | |
|---------------------|----------------------------------|
| Existing Condition | Illegal Clearing & Leased Ag Use |
| Grading | No |
| Bottomland Hardwood | 13.2 |
| Forested Wetland | 3.2 |
| Emergent Wetland | 8.1 |
| Total Acres | 24.5 |

NORTH I40



DRAKE ROAD



| Drake Road | |
|---------------------|---------------|
| Existing Condition | Leased Ag Use |
| Grading | No |
| Bottomland Hardwood | 11.8 |
| Forested Wetland | 7.1 |
| Total Acres | 18.9 |

DRAKE ROAD



MISSOURI PACIFIC RAILROAD - WEST



Grading
Location

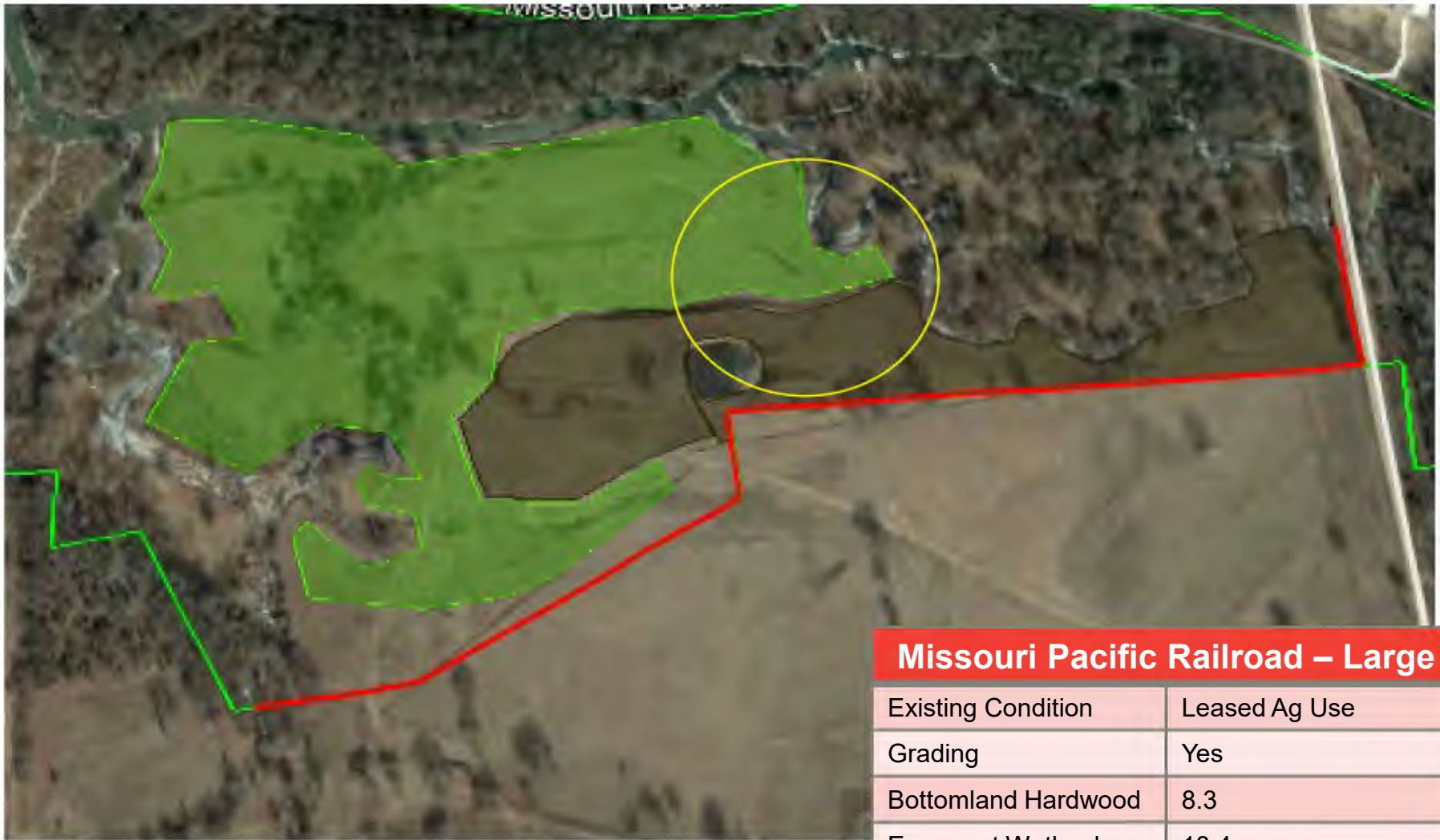
Missouri Pacific Railroad - Small

| Existing Condition | Leased Ag Use |
|---------------------|---------------|
| Grading | Yes |
| Bottomland Hardwood | 2.6 |
| Forested Wetland | 4.7 |
| Emergent Wetland | 10.0 |
| Total Acres | 17.3 |

MISSOURI PACIFIC RAILROAD - WEST



MISSOURI PACIFIC RAILROAD - EAST



| Missouri Pacific Railroad – Large | |
|-----------------------------------|---------------|
| Existing Condition | Leased Ag Use |
| Grading | Yes |
| Bottomland Hardwood | 8.3 |
| Emergent Wetland | 18.4 |
| Total Acres | 26.7 |

MISSOURI PACIFIC RAILROAD - EAST



MITIGATION COSTS



Ecological

- Native species planting & invasive species management
- Total: ~\$2.57 million

Cultural Resources Survey

- ~ \$300,000

Construction

- Security Fencing
- Grading/Contouring
- Signs
- Total: ~\$1.87 million

Overall Total: ~\$4,740,000



US Army Corps
of Engineers



DRAFT PUBLIC REVIEW PERIOD



There will be a 30-day public comment period

Public Review

- Begins August 30, 2021
- Ends September 29, 2021
- The presentation and Draft EA & Appendices can be found here: <http://www.swt.usace.army.mil/>



US Army Corps
of Engineers



HOW CAN I PARTICIPATE?



Submit your written comments by September 29, 2021 (post-marked)

- Email to:

Justyss.A.Watson@usace.army.mil

- Or Mail to:

Justyss Watson

Biologist, Environmental Branch

Regional Planning and Environmental Center

P.O. Box 17300 Room 3A12

819 Taylor Street

Fort Worth, TX 76102-300



US Army Corps
of Engineers

