

**Actual Revenue FY2022 vs. Actual Revenue FY2023
FEBRUARY FY2023 Comparison**

	Actual FEBRUARY FY2022	Actual FEBRUARY FY2023	DOLLAR CHANGE	PERCENT CHANGE
ONGOING RECEIPTS				
Net Sales and Use Tax (excl. cost of admin)	98,517,722	109,260,813	10,743,092	10.9%
Lottery	12,822,802	13,815,287	992,485	7.7%
Net Contractor's Excise Tax	10,331,271	12,048,294	1,717,022	16.6%
Insurance Company Tax	12,238,749	12,609,603	370,854	3.0%
Unclaimed Property Receipts	-	(2,460,661)	(2,460,661)	N/A
Licenses, Permits, and Fees	882,782	1,822,970	940,188	106.5%
Tobacco Taxes	1,188,775	-	(1,188,775)	-100.0%
Trust Funds	-	-	0	N/A
Net Transfers In (excluding one-time)	510,288	1,397,573	887,285	173.9%
Alcohol Beverage Tax	5,513	4,978	(535)	-9.7%
Bank Franchise Tax	522,440	1,504,587	982,148	188.0%
Charges for Goods and Services	1,595,282	667,658	(927,623)	-58.1%
Telecommunications Tax	248,747	311,621	62,874	25.3%
Severance Taxes	1,518,316	22,991	(1,495,326)	-98.5%
Investment Income and Interest	5,010	1,450	(3,560)	-71.1%
Alcohol Beverage 2% Wholesale Tax	245,499	261,229	15,729	6.4%
SUBTOTAL (ONGOING RECEIPTS)	\$ 140,633,195	\$ 151,268,392	\$ 10,635,197	7.6%

**Actual Revenue FY2022 vs. Actual Revenue FY2023
Year-To-Date Through FEBRUARY FY2023 Comparison**

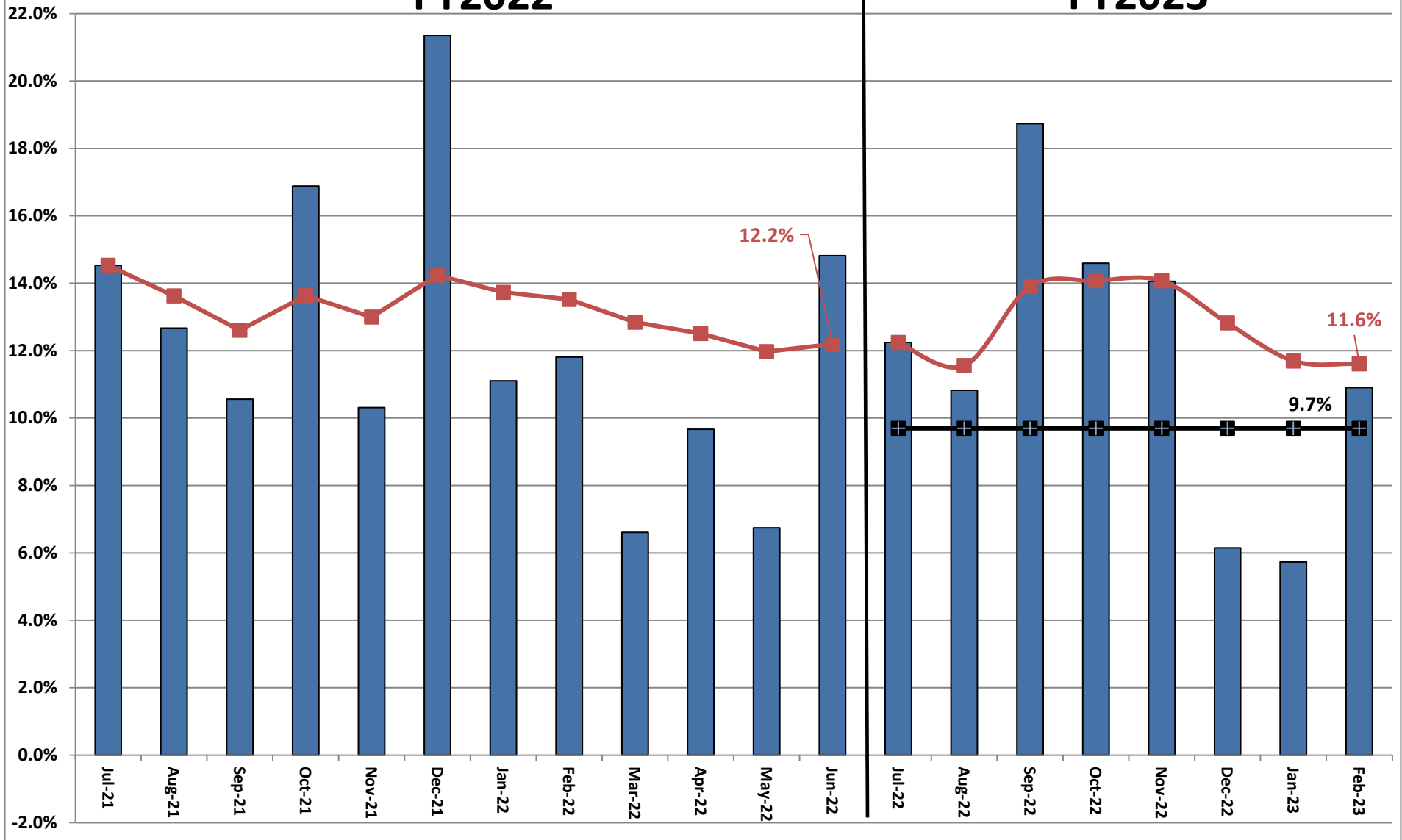
	Actual FEBRUARY YTD FY2022	Actual FEBRUARY YTD FY2023	DOLLAR CHANGE	YTD GROWTH OVER FY2022
ONGOING RECEIPTS				
Net Sales and Use Tax (excl. cost of admin)	924,450,750	1,031,774,219	107,323,469	11.6%
Lottery	106,310,302	112,218,837	5,908,535	5.6%
Net Contractor's Excise Tax	112,987,779	140,388,123	27,400,344	24.3%
Insurance Company Tax	72,141,610	79,729,238	7,587,627	10.5%
Unclaimed Property Receipts	70,375,624	80,933,623	10,557,999	15.0%
Licenses, Permits, and Fees	27,655,546	28,274,637	619,091	2.2%
Tobacco Taxes	31,188,775	30,000,000	(1,188,775)	-3.8%
Trust Funds	29,512,894	31,890,322	2,377,428	8.1%
Net Transfers In (excluding one-time)	16,211,825	14,775,888	(1,435,937)	-8.9%
Alcohol Beverage Tax	4,925,845	4,788,354	(137,491)	-2.8%
Bank Franchise Tax	5,386,200	6,122,562	736,362	13.7%
Charges for Goods and Services	9,077,817	7,963,807	(1,114,010)	-12.3%
Telecommunications Tax	1,659,801	1,536,276	(123,525)	-7.4%
Severance Taxes	6,597,509	4,628,157	(1,969,352)	-29.8%
Investment Income and Interest	19,488,033	13,763,441	(5,724,592)	-29.4%
Alcohol Beverage 2% Wholesale Tax	1,715,955	2,074,004	358,049	20.9%
SUBTOTAL (ONGOING RECEIPTS)	\$ 1,439,686,266	\$ 1,590,861,487	\$ 151,175,221	10.5%
ONE-TIME RECEIPTS				
Bank Franchise Tax Prior Year Revenue	-	692,349	692,349	N/A
One-Time Sales and Use Tax	28,305,843	-	(28,305,843)	-100.0%
SUBTOTAL (ONE-TIME RECEIPTS)	\$ 28,305,843	\$ 692,349	\$ (27,613,494)	-97.6%
GRAND TOTAL	\$ 1,467,992,109	\$ 1,591,553,836	\$ 123,561,727	8.4%

Ongoing State Sales and Use Tax (Excludes one-time receipts)



FY2022

FY2023



**Legislative Revised Adopted FY2023 Estimate (Feb. 2023) vs. Actual Revenues
FEBRUARY FY2023 Comparison**

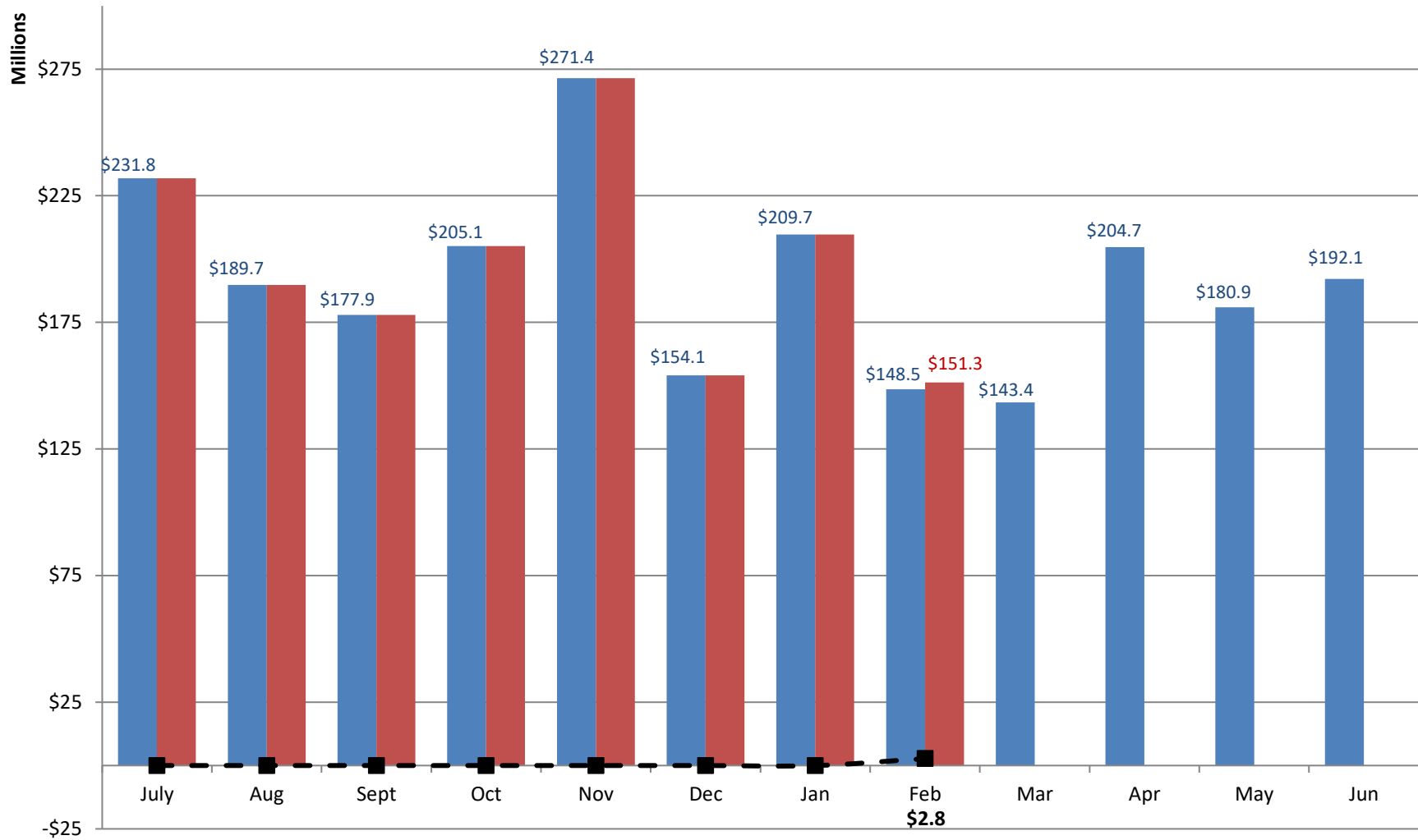
	Leg. Rev. Adopted FEBRUARY FY2023	Actual FEBRUARY FY2023	DOLLAR CHANGE	PERCENT CHANGE
ONGOING RECEIPTS				
Net Sales and Use Tax (excl. cost of admin)	109,309,081	109,260,813	(48,268)	0.0%
Lottery	14,400,604	13,815,287	(585,317)	-4.1%
Net Contractor's Excise Tax	11,895,744	12,048,294	152,550	1.3%
Insurance Company Tax	11,197,717	12,609,603	1,411,886	12.6%
Unclaimed Property Receipts	(3,074,912)	(2,460,661)	614,252	N/A
Licenses, Permits, and Fees	920,503	1,822,970	902,467	98.0%
Tobacco Taxes	-	-	0	N/A
Trust Funds	-	-	0	N/A
Net Transfers In (excluding one-time)	641,000	1,397,573	756,572	118.0%
Alcohol Beverage Tax	5,072	4,978	(94)	-1.9%
Bank Franchise Tax	519,676	1,504,587	984,911	189.5%
Charges for Goods and Services	1,414,313	667,658	(746,655)	-52.8%
Telecommunications Tax	238,123	311,621	73,498	30.9%
Severance Taxes	705,228	22,991	(682,238)	-96.7%
Investment Income and Interest	6,302	1,450	(4,852)	-77.0%
Alcohol Beverage 2% Wholesale Tax	314,986	261,229	(53,758)	-17.1%
TOTAL (ONGOING RECEIPTS)	\$ 148,493,439	\$ 151,268,392	\$ 2,774,953	1.9%

**Legislative Revised Adopted FY2023 Estimate (Feb. 2023) vs. Actual Revenues
Year-to-Date Through FEBRUARY FY2023 Comparison**

	Leg. Rev. Adopted FEBRUARY YTD FY2023	Actual FEBRUARY YTD FY2023	DOLLAR CHANGE	YTD % Chg. Actual/Adopt Comparison
ONGOING RECEIPTS				
Net Sales and Use Tax (excl. cost of admin)	1,031,822,487	1,031,774,219	(48,268)	0.0%
Lottery	112,804,154	112,218,837	(585,317)	-0.5%
Net Contractor's Excise Tax	140,235,574	140,388,123	152,550	0.1%
Insurance Company Tax	78,317,352	79,729,238	1,411,886	1.8%
Unclaimed Property Receipts	80,319,371	80,933,623	614,252	0.8%
Licenses, Permits, and Fees	27,372,171	28,274,637	902,467	3.3%
Tobacco Taxes	30,000,000	30,000,000	0	0.0%
Trust Funds	31,890,322	31,890,322	0	0.0%
Net Transfers In (excluding one-time)	14,019,316	14,775,888	756,572	5.4%
Alcohol Beverage Tax	4,788,448	4,788,354	(94)	0.0%
Bank Franchise Tax	5,137,652	6,122,562	984,911	19.2%
Charges for Goods and Services	8,710,461	7,963,807	(746,655)	-8.6%
Telecommunications Tax	1,462,778	1,536,276	73,498	5.0%
Severance Taxes	5,310,395	4,628,157	(682,238)	-12.8%
Investment Income and Interest	13,768,293	13,763,441	(4,852)	0.0%
Alcohol Beverage 2% Wholesale Tax	2,127,762	2,074,004	(53,758)	-2.5%
SUBTOTAL (ONGOING RECEIPTS)	\$ 1,588,086,534	\$ 1,590,861,487	\$ 2,774,953	0.2%
ONE-TIME RECEIPTS				
Bank Franchise Tax Prior Year Revenue	692,349	692,349	0	0.0%
SUBTOTAL (ONE-TIME RECEIPTS)	\$ 692,349	\$ 692,349	\$ 0	0.0%
GRAND TOTAL	\$ 1,588,778,883	\$ 1,591,553,836	\$ 2,774,953	0.2%

Revised Adopted FY2023 vs. Actual FY2023 Receipts

■ Rev. Adopted FY2023 Receipts
 ■ Actual FY2023 Receipts
 -■- Actual vs. Adopted



Through 8 months, total actual receipts were \$2.8 million MORE than the Revised Adopted FY2023 estimate.