

**Actual Revenue FY2022 vs. Actual Revenue FY2023
NOVEMBER FY2023 Comparison**

	Actual NOVEMBER FY2022	Actual NOVEMBER FY2023	DOLLAR CHANGE	PERCENT CHANGE
ONGOING RECEIPTS				
Net Sales and Use Tax (excl. cost of admin)	109,748,013	125,175,749	15,427,735	14.1%
Lottery	13,865,339	13,758,485	(106,854)	-0.8%
Net Contractor's Excise Tax	13,822,027	17,427,488	3,605,461	26.1%
Insurance Company Tax*	4,580,789	12,239,023	7,658,234	167.2%
Unclaimed Property Receipts	70,198,626	90,942,636	20,744,010	29.6%
Licenses, Permits, and Fees	1,493,094	1,301,951	(191,143)	-12.8%
Tobacco Taxes	3,888,528	3,918,239	29,711	0.8%
Trust Funds	-	-	0	N/A
Net Transfers In (excluding one-time)	1,316,142	1,281,620	(34,523)	-2.6%
Alcohol Beverage Tax	14,385	8,998	(5,387)	-37.5%
Bank Franchise Tax	900,688	2,118,781	1,218,093	135.2%
Charges for Goods and Services	1,066,822	1,118,622	51,800	4.9%
Telecommunications Tax	251,871	209,099	(42,772)	-17.0%
Severance Taxes	2,628,544	1,403,666	(1,224,878)	-46.6%
Investment Income and Interest	7,169	4,399	(2,770)	-38.6%
Alcohol Beverage 2% Wholesale Tax	239,255	485,772	246,517	103.0%
SUBTOTAL (ONGOING RECEIPTS)	\$ 224,021,293	\$ 271,394,527	\$ 47,373,234	21.1%
ONE-TIME RECEIPTS				
Bank Franchise Tax Prior Year Revenue	-	27,388	27,388	N/A
One-Time Sales and Use Tax	28,305,843	-	(28,305,843)	-100.0%
SUBTOTAL (ONE-TIME RECEIPTS)	\$ 28,305,843	\$ 27,388	\$ (28,278,456)	N/A
GRAND TOTAL	\$ 252,327,136	\$ 271,421,915	\$ 19,094,779	7.6%

NOTES

* The increase in Insurance Company Tax is partially due to timing of receipts to the general fund.

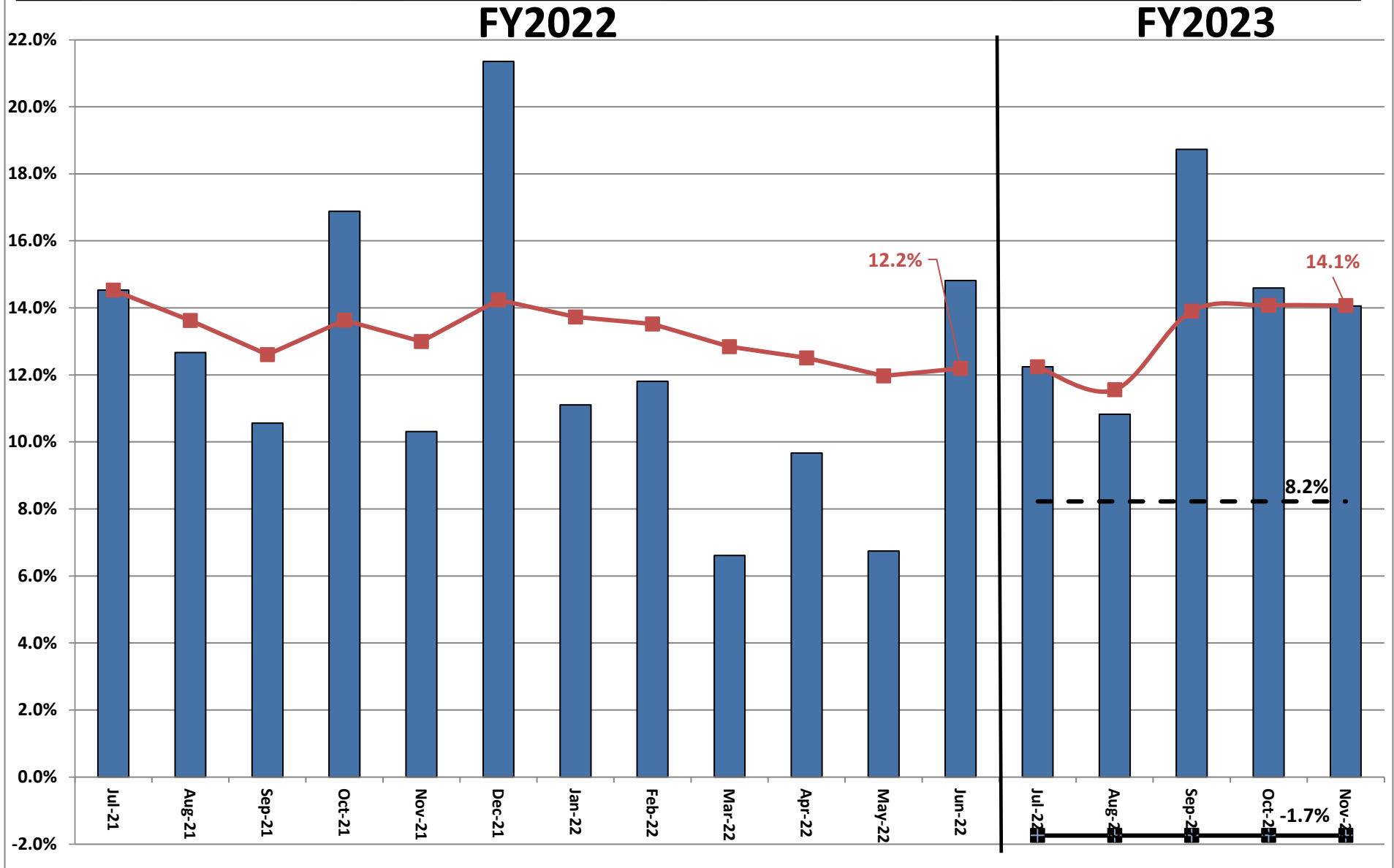
**Actual Revenue FY2022 vs. Actual Revenue FY2023
Year-To-Date Through NOVEMBER FY2023 Comparison**

	Actual NOVEMBER FY2022	Actual NOVEMBER FY2023	DOLLAR CHANGE	YTD GROWTH OVER FY2022
ONGOING RECEIPTS				
Net Sales and Use Tax (excl. cost of admin)	584,879,645	667,185,812	82,306,166	14.1%
Lottery*	60,656,060	72,359,854	11,703,794	19.3%
Net Contractor's Excise Tax	72,583,366	90,758,368	18,175,002	25.0%
Insurance Company Tax	43,997,781	46,577,687	2,579,907	5.9%
Unclaimed Property Receipts	64,269,573	87,257,694	22,988,122	35.8%
Licenses, Permits, and Fees	15,374,675	14,927,559	(447,116)	-2.9%
Tobacco Taxes	23,782,940	22,866,047	(916,892)	-3.9%
Trust Funds	29,512,894	31,890,322	2,377,428	8.1%
Net Transfers In (excluding one-time)	13,008,853	11,839,854	(1,168,999)	-9.0%
Alcohol Beverage Tax	2,541,237	2,485,902	(55,335)	-2.2%
Bank Franchise Tax	1,773,039	3,372,385	1,599,346	90.2%
Charges for Goods and Services	5,068,693	5,257,794	189,101	3.7%
Telecommunications Tax	961,949	839,278	(122,671)	-12.8%
Severance Taxes	5,073,087	3,239,156	(1,833,932)	-36.2%
Investment Income and Interest	19,467,284	13,750,094	(5,717,190)	-29.4%
Alcohol Beverage 2% Wholesale Tax	1,217,154	1,229,389	12,235	1.0%
SUBTOTAL (ONGOING RECEIPTS)	\$ 944,168,229	\$ 1,075,837,195	\$ 131,668,966	13.9%
ONE-TIME RECEIPTS				
Bank Franchise Tax Prior Year Revenue	-	42,013	42,013	N/A
One-Time Sales and Use Tax	28,305,843	-	(28,305,843)	-100.0%
SUBTOTAL (ONE-TIME RECEIPTS)	\$ 28,305,843	\$ 42,013	\$ (28,263,831)	N/A
GRAND TOTAL	\$ 972,474,072	\$ 1,075,879,207	\$ 103,405,135	10.6%

NOTES

* The increase in Lottery is partially due to timing of receipts to the general fund.

Ongoing State Sales and Use Tax (Excludes one-time receipts)



**Legislative Adopted FY2023 Estimate (Feb. 2022) vs. Actual Revenues
NOVEMBER FY2023 Comparison**

	Leg Adopted NOVEMBER FY2023	Actual NOVEMBER FY2023	DOLLAR CHANGE	PERCENT CHANGE
ONGOING RECEIPTS				
Net Sales and Use Tax (excl. cost of admin)	111,013,127	125,175,749	14,162,622	12.8%
Lottery	13,498,804	13,758,485	259,681	1.9%
Net Contractor's Excise Tax	14,921,501	17,427,488	2,505,987	16.8%
Insurance Company Tax*	5,163,846	12,239,023	7,075,178	137.0%
Unclaimed Property Receipts	58,818,237	90,942,636	32,124,399	54.6%
Licenses, Permits, and Fees	1,080,825	1,301,951	221,126	20.5%
Tobacco Taxes	4,263,068	3,918,239	(344,829)	-8.1%
Trust Funds	-	-	0	N/A
Net Transfers In (excluding one-time)	1,048,958	1,281,620	232,662	22.2%
Alcohol Beverage Tax	11,655	8,998	(2,657)	-22.8%
Bank Franchise Tax	492,107	2,118,781	1,626,675	330.6%
Charges for Goods and Services	1,074,194	1,118,622	44,428	4.1%
Telecommunications Tax	221,882	209,099	(12,783)	-5.8%
Severance Taxes	727,546	1,403,666	676,120	92.9%
Investment Income and Interest	45,374	4,399	(40,975)	-90.3%
Alcohol Beverage 2% Wholesale Tax	206,761	485,772	279,011	134.9%
TOTAL (ONGOING RECEIPTS)	\$ 212,587,882	\$ 271,394,527	\$ 58,806,645	27.7%
ONE-TIME RECEIPTS				
Bank Franchise Tax Prior Year Revenue	-	27,388	27,388	N/A
SUBTOTAL (ONE-TIME RECEIPTS)	\$ 0	\$ 27,388	\$ 27,388	N/A
GRAND TOTAL	\$ 212,587,882	\$ 271,421,915	\$ 58,834,032	27.7%

NOTES

* The increase in Insurance Company Tax is partially due to timing of receipts to the general fund.

**Legislative Adopted FY2023 Estimate (Feb. 2022) vs. Actual Revenues
Year-to-Date Through NOVEMBER FY2023 Comparison**

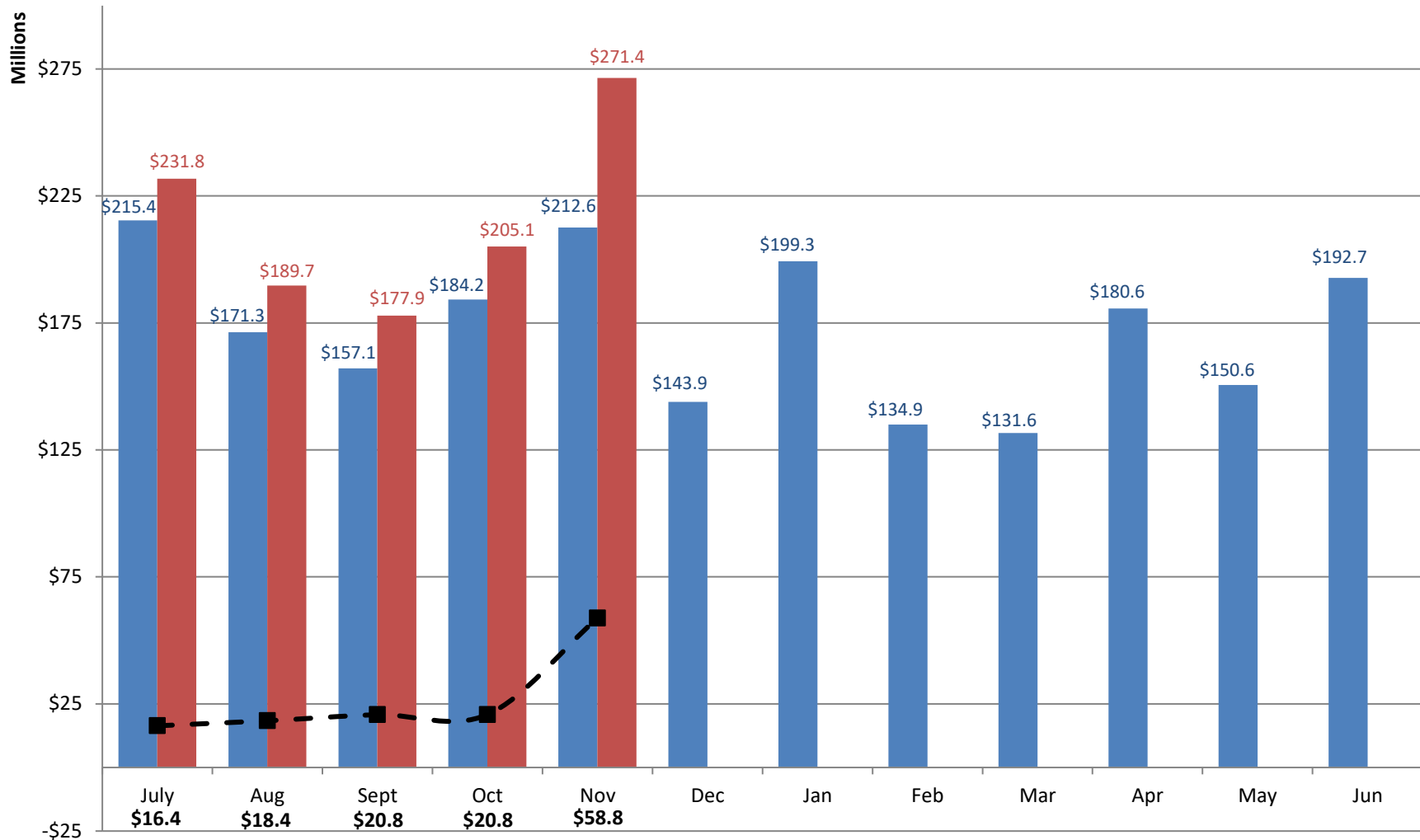
	Leg. Adopted NOVEMBER YTD FY2023	Actual NOVEMBER YTD FY2023	DOLLAR CHANGE	YTD % Chg. Actual/Adopt Comparison
ONGOING RECEIPTS				
Net Sales and Use Tax (excl. cost of admin)	585,403,926	667,185,812	81,781,886	14.0%
Lottery	64,034,267	72,359,854	8,325,587	13.0%
Net Contractor's Excise Tax	75,147,189	90,758,368	15,611,179	20.8%
Insurance Company Tax*	44,793,027	46,577,687	1,784,661	4.0%
Unclaimed Property Receipts	55,460,522	87,257,694	31,797,172	57.3%
Licenses, Permits, and Fees	14,591,032	14,927,559	336,527	2.3%
Tobacco Taxes	24,839,330	22,866,047	(1,973,283)	-7.9%
Trust Funds	31,890,322	31,890,322	0	0.0%
Net Transfers In (excluding one-time)	12,001,639	11,839,854	(161,785)	-1.3%
Alcohol Beverage Tax	2,514,855	2,485,902	(28,953)	-1.2%
Bank Franchise Tax	1,266,543	3,372,385	2,105,842	166.3%
Charges for Goods and Services	6,589,236	5,257,794	(1,331,442)	-20.2%
Telecommunications Tax	876,340	839,278	(37,062)	-4.2%
Severance Taxes	4,391,786	3,239,156	(1,152,630)	-26.2%
Investment Income and Interest	15,634,702	13,750,094	(1,884,609)	-12.1%
Alcohol Beverage 2% Wholesale Tax	1,142,208	1,229,389	87,181	7.6%
SUBTOTAL (ONGOING RECEIPTS)	\$ 940,576,923	\$ 1,075,837,195	\$ 135,260,272	14.4%
ONE-TIME RECEIPTS				
Bank Franchise Tax Prior Year Revenue	-	42,013	42,013	N/A
SUBTOTAL (ONE-TIME RECEIPTS)	\$ 0	\$ 42,013	\$ 42,013	N/A
GRAND TOTAL	\$ 940,576,923	\$ 1,075,879,207	\$ 135,302,284	14.4%

NOTES

* The decrease in Insurance Company Tax is partially due to timing of receipts to the general fund.

Adopted FY2023 vs. Actual FY2023 Ongoing Receipts

■ Adopted FY2023 Receipts
 ■ Actual FY2023 Receipts
 -■- Actual vs. Adopted



Through 5 months, total actual ongoing receipts were \$135.3 million MORE than the Adopted FY2023 estimate.

**Governor's Revised FY2023 Estimate (Nov. 2022) vs. Actual Revenues
NOVEMBER FY2023 Comparison**

	Gov. Revised NOVEMBER FY2023	Actual NOVEMBER FY2023	DOLLAR CHANGE	MTD % Chg. Actual/Revised Comparison
ONGOING RECEIPTS				
Net Sales and Use Tax (excl. cost of admin)	119,892,730	125,175,749	5,283,018	4.4%
Lottery	13,617,268	13,758,485	141,218	1.0%
Net Contractor's Excise Tax	16,913,238	17,427,488	514,250	3.0%
Insurance Company Tax	13,854,094	12,239,023	(1,615,070)	-11.7%
Unclaimed Property Receipts	88,611,588	90,942,636	2,331,048	2.6%
Licenses, Permits, and Fees	1,132,968	1,301,951	168,982	14.9%
Tobacco Taxes	4,077,344	3,918,239	(159,105)	-3.9%
Trust Funds	-	-	0	N/A
Net Transfers In (excluding one-time)	1,209,550	1,281,620	72,070	6.0%
Alcohol Beverage Tax	12,103	8,998	(3,106)	-25.7%
Bank Franchise Tax	692,184	2,118,781	1,426,597	206.1%
Charges for Goods and Services	1,242,629	1,118,622	(124,008)	-10.0%
Telecommunications Tax	203,957	209,099	5,141	2.5%
Severance Taxes	1,033,867	1,403,666	369,799	35.8%
Investment Income and Interest	22,335	4,399	(17,936)	-80.3%
Alcohol Beverage 2% Wholesale Tax	493,313	485,772	(7,541)	-1.5%
TOTAL (ONGOING RECEIPTS)	\$ 263,009,170	\$ 271,394,527	\$ 8,385,357	3.2%
ONE-TIME RECEIPTS				
Bank Franchise Tax Prior Year Revenue	-	27,388	27,388	N/A
SUBTOTAL (ONE-TIME RECEIPTS)	\$ 0	\$ 27,388	\$ 27,388	N/A
GRAND TOTAL	\$ 263,009,170	\$ 271,421,915	\$ 8,412,745	3.2%

**Governor's Revised FY2023 Estimate (Nov. 2022) vs. Actual Revenues
Year-To-Date Through NOVEMBER FY2022 Comparison**

	Gov. Revised YTD FY2023	Actual YTD FY2023	DOLLAR CHANGE	YTD % Chg. Actual/Revised Comparison
ONGOING RECEIPTS				
Net Sales and Use Tax (excl. cost of admin)	661,902,793	667,185,812	5,283,018	0.8%
Lottery	72,218,636	72,359,854	141,218	0.2%
Net Contractor's Excise Tax	90,244,118	90,758,368	514,250	0.6%
Insurance Company Tax	48,192,758	46,577,687	(1,615,070)	-3.4%
Unclaimed Property Receipts	84,926,647	87,257,694	2,331,048	2.7%
Licenses, Permits, and Fees	14,758,577	14,927,559	168,982	1.1%
Tobacco Taxes	23,025,152	22,866,047	(159,105)	-0.7%
Trust Funds	31,890,322	31,890,322	0	0.0%
Net Transfers In (excluding one-time)	11,767,784	11,839,854	72,070	0.6%
Alcohol Beverage Tax	2,489,008	2,485,902	(3,106)	-0.1%
Bank Franchise Tax	1,945,788	3,372,385	1,426,597	73.3%
Charges for Goods and Services	5,381,802	5,257,794	(124,008)	-2.3%
Telecommunications Tax	834,137	839,278	5,141	0.6%
Severance Taxes	2,869,357	3,239,156	369,799	12.9%
Investment Income and Interest	13,768,030	13,750,094	(17,936)	-0.1%
Alcohol Beverage 2% Wholesale Tax	1,236,930	1,229,389	(7,541)	-0.6%
SUBTOTAL (ONGOING RECEIPTS)	\$ 1,067,451,837	\$ 1,075,837,195	\$ 8,385,357	0.8%
ONE-TIME RECEIPTS				
Bank Franchise Tax Prior Year Revenue	14,625	42,013	27,388	187.3%
SUBTOTAL (ONE-TIME RECEIPTS)	\$ 14,625	\$ 42,013	\$ 27,388	187.3%
GRAND TOTAL	\$ 1,067,466,462	\$ 1,075,879,207	\$ 8,412,745	0.8%