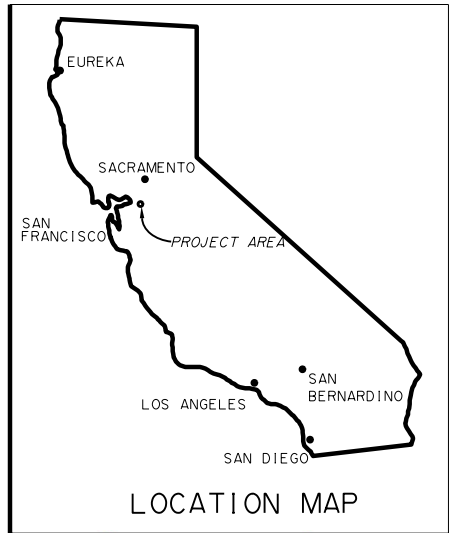


STATE OF CALIFORNIA
 CALIFORNIA NATURAL RESOURCES AGENCY
DEPARTMENT OF WATER RESOURCES
 DIVISION OF ENGINEERING

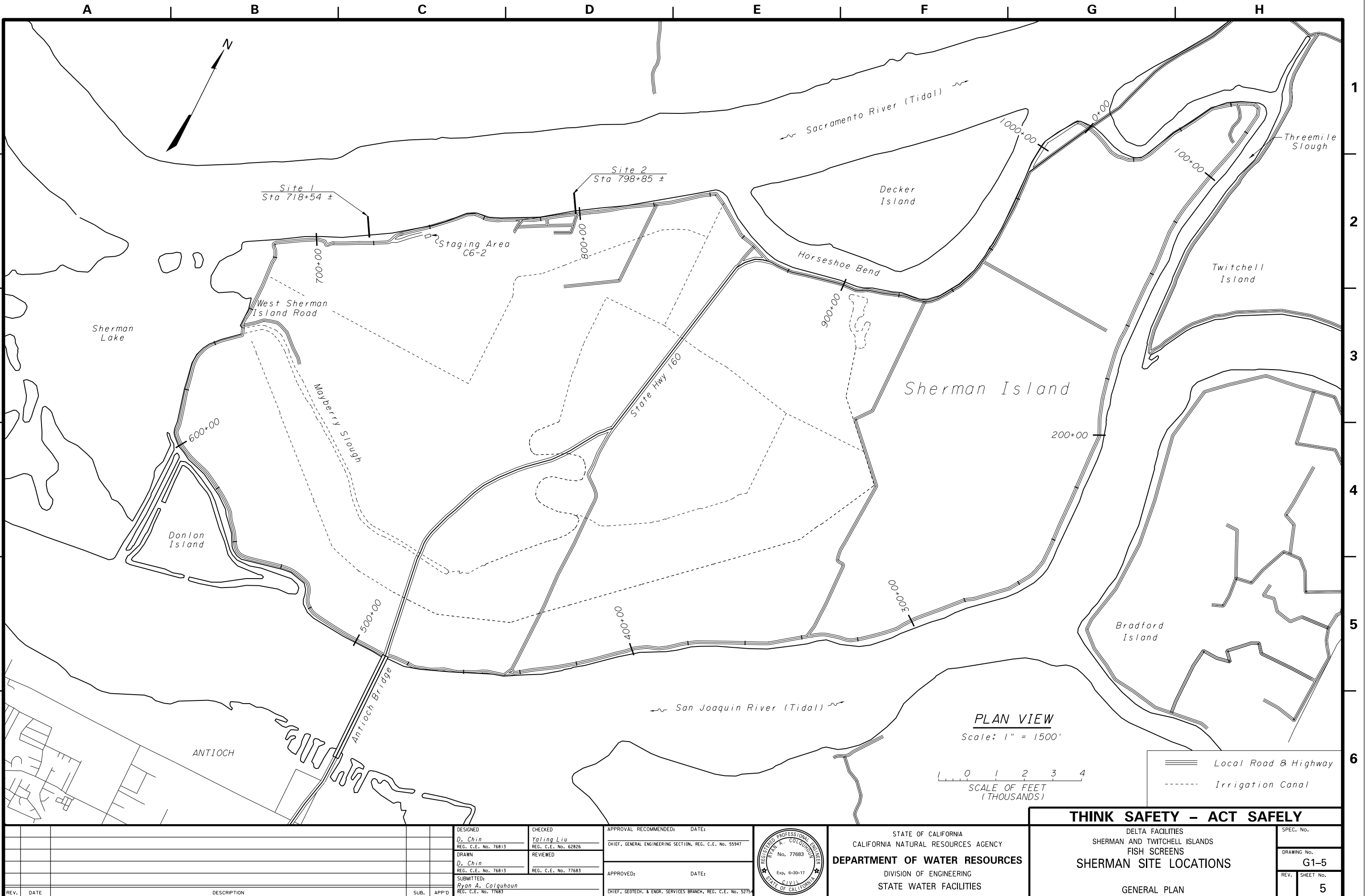


STATE WATER FACILITIES
 DELTA FACILITIES
 SACRAMENTO – SAN JOAQUIN DELTA
SHERMAN AND TWITCHELL ISLANDS – FISH SCREENS
 SPECIFICATION NO. _____

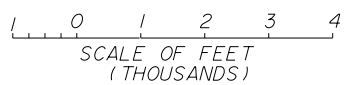


THINK SAFETY – ACT SAFELY	
APPROVED _____ DATE: _____	SPEC. No.
CHIEF, DIVISION OF ENGINEERING REG. C.E. NO. 52771	DRAWING No. G1-1
	REV. SHEET No. 1

IP:\P\1\ams0230\4G1-5 Sherman Island General Plan.dgn



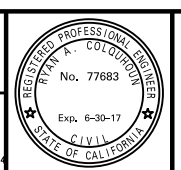
PLAN VIEW
Scale: 1" = 1500'



Local Road & Highway
Irrigation Canal

REV.	DATE	DESCRIPTION	SUB.	APP'D

DESIGNED D. Chin REG. C.E. No. 76813	CHECKED Yaling Liu REG. C.E. No. 62826	APPROVAL RECOMMENDED: DATE: CHIEF, GENERAL ENGINEERING SECTION, REG. C.E. No. 55947
DRAWN D. Chin REG. C.E. No. 76813	REVIEWED REG. C.E. No. 77683	APPROVED: DATE: CHIEF, GEOTECH. & ENGR. SERVICES BRANCH, REG. C.E. No. 5275
SUBMITTED: Ryan A. Colquhoun REG. C.E. No. 77683		

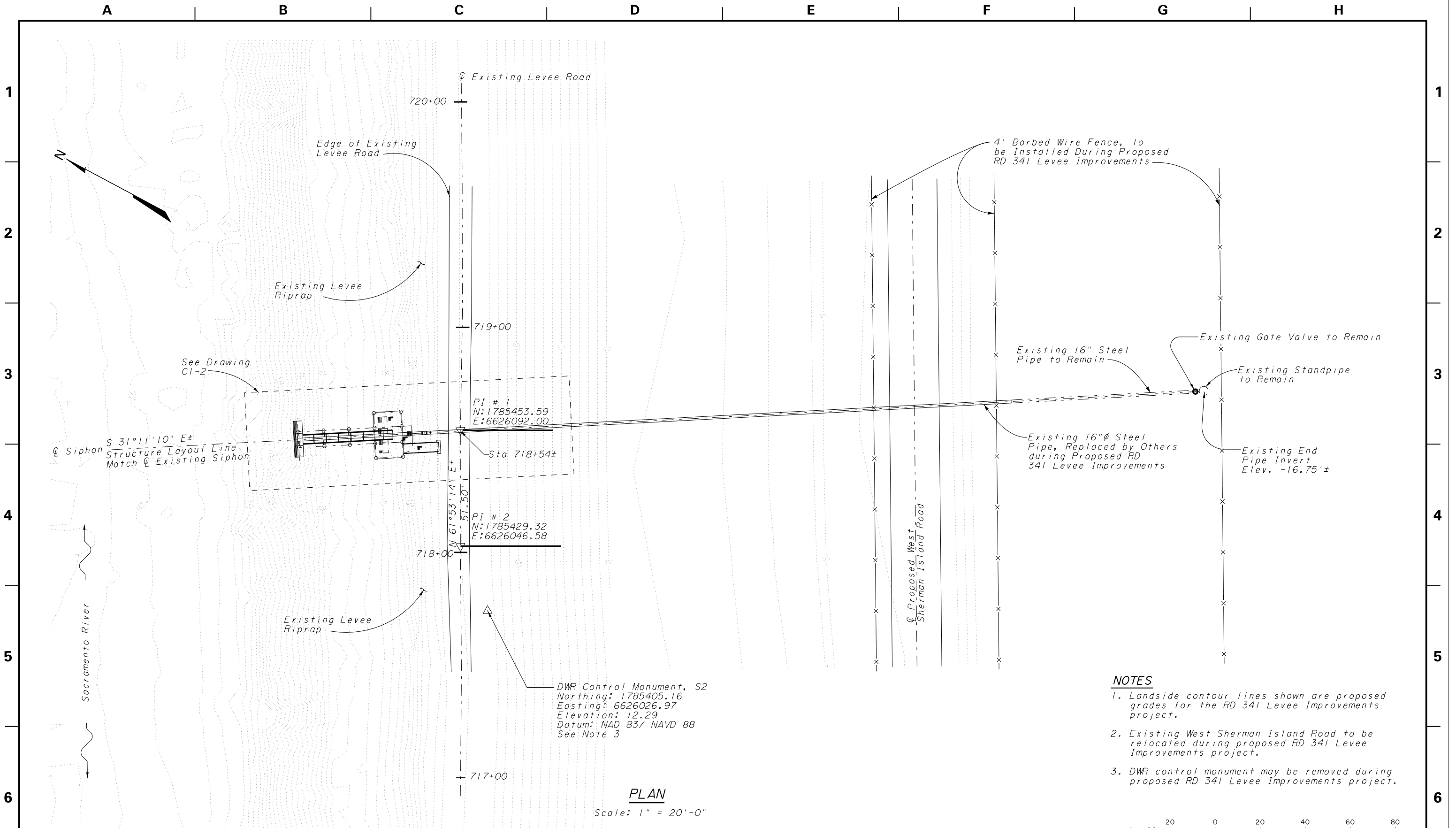


STATE OF CALIFORNIA
CALIFORNIA NATURAL RESOURCES AGENCY
DEPARTMENT OF WATER RESOURCES
DIVISION OF ENGINEERING
STATE WATER FACILITIES

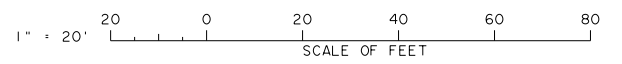
THINK SAFETY - ACT SAFELY

DELTA FACILITIES
SHERMAN AND TWITCHELL ISLANDS
FISH SCREENS
SHERMAN SITE LOCATIONS
GENERAL PLAN

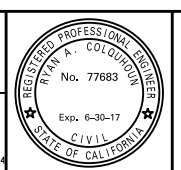
SPEC. No.	
DRAWING No.	G1-5
REV. SHEET No.	5



- NOTES**
1. Landside contour lines shown are proposed grades for the RD 341 Levee Improvements project.
 2. Existing West Sherman Island Road to be relocated during proposed RD 341 Levee Improvements project.
 3. DWR control monument may be removed during proposed RD 341 Levee Improvements project.



DESIGNED D. Chin REG. C.E. No. 76813	CHECKED Yaling Liu REG. C.E. No. 62826	APPROVAL RECOMMENDED: DATE: CHIEF, GENERAL ENGINEERING SECTION, REG. C.E. No. 55947
DRAWN D. Chin REG. C.E. No. 76813	REVIEWED Ryan A. Colquhoun REG. C.E. No. 77683	APPROVED: DATE: CHIEF, GEOTECH. & ENGR. SERVICES BRANCH, REG. C.E. No. 52754
SUBMITTED: Ryan A. Colquhoun REG. C.E. No. 77683		
REV.	DATE	DESCRIPTION

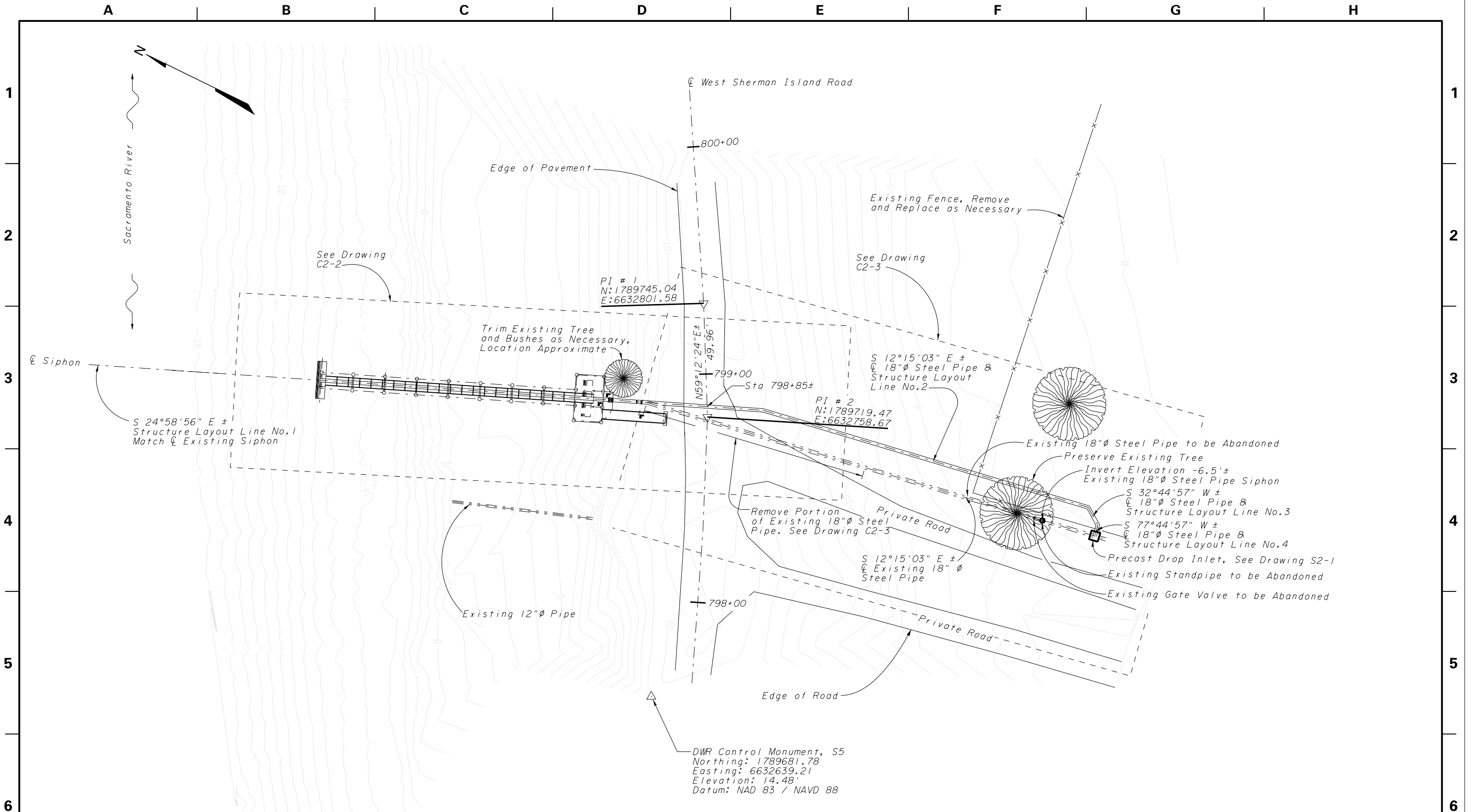


STATE OF CALIFORNIA
CALIFORNIA NATURAL RESOURCES AGENCY
DEPARTMENT OF WATER RESOURCES
DIVISION OF ENGINEERING
STATE WATER FACILITIES

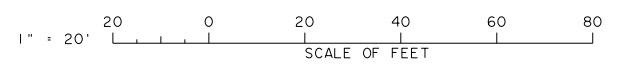
THINK SAFETY - ACT SAFELY

DELTA FACILITIES
SHERMAN AND TWITCHELL ISLANDS
FISH SCREENS
SITE 1 - SHERMAN ISLAND
SITE PLAN

SPEC. No.	
DRAWING No.	C1-1
REV.	SHEET No.
	7

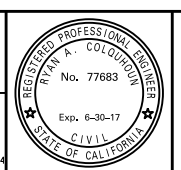


PLAN
Scale: 1" = 20'-0"



REV.	DATE	DESCRIPTION	SUB.	APP'D

DESIGNED D. Chin REG. C.E. No. 76813	CHECKED Yaling Liu REG. C.E. No. 62826	APPROVAL RECOMMENDED: DATE: CHIEF, GENERAL ENGINEERING SECTION, REG. C.E. No. 55947
DRAWN D. Chin REG. C.E. No. 76813	REVIEWED Ryan A. Colquhoun REG. C.E. No. 77683	APPROVED: DATE: CHIEF, GEOTECH. & ENGR. SERVICES BRANCH, REG. C.E. No. 52754
SUBMITTED: Ryan A. Colquhoun REG. C.E. No. 77683		



STATE OF CALIFORNIA
CALIFORNIA NATURAL RESOURCES AGENCY
DEPARTMENT OF WATER RESOURCES
DIVISION OF ENGINEERING
STATE WATER FACILITIES

THINK SAFETY - ACT SAFELY	
DELTA FACILITIES SHERMAN AND TWITCHELL ISLANDS FISH SCREENS SITE 2 - SHERMAN ISLAND	SPEC. No. DRAWING No. C2-1 REV. SHEET No. 9
SITE PLAN	