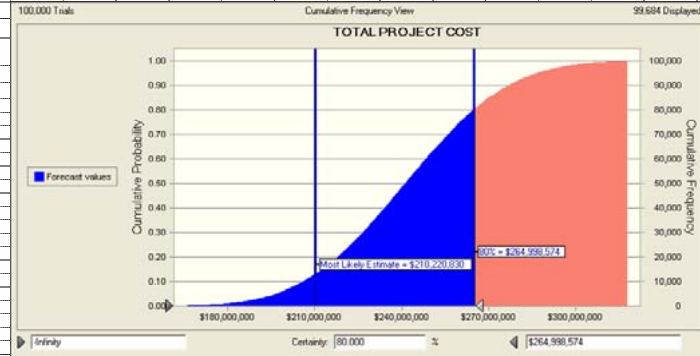
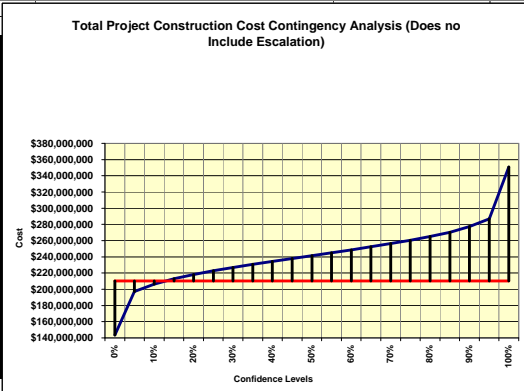


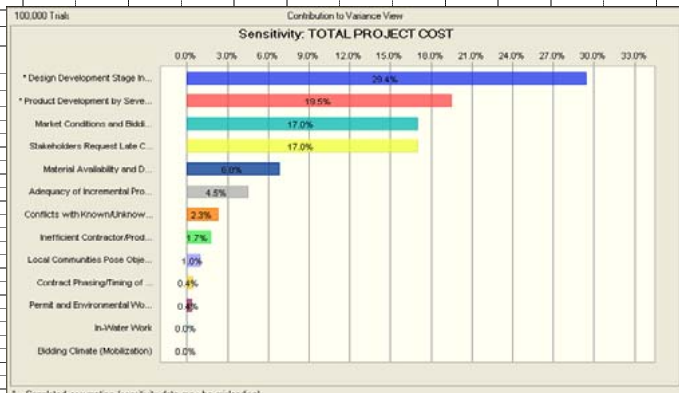
Contingency on Base Estimate		80% Confidence Project Cost
Total Construction Cost (Most Likely) ->	\$210,220,830	
Construction Cost Contingency Amount ->	\$54,777,745	
Total Project Cost (80% Confidence) ->	\$264,998,574	
Fully Funded Total Project Cost (80% Confidence) ->		\$264,998,574

- BASE CONTINGENCY DEVELOPMENT -

**Alternative Plan 2
Contingency Analysis**

Most Likely Cost Estimate	\$	210,220,830
Confidence Level	Value	Contingency
0%	\$143,439,464	-31.77%
5%	\$197,175,240	-6.21%
10%	\$206,303,531	-1.86%
15%	\$212,982,156	1.31%
20%	\$218,326,602	3.86%
25%	\$222,814,078	5.99%
30%	\$226,904,088	7.94%
35%	\$230,756,645	9.77%
40%	\$234,487,009	11.54%
45%	\$237,972,606	13.20%
50%	\$241,478,690	14.87%
55%	\$245,066,499	16.58%
60%	\$248,651,395	18.28%
65%	\$252,331,525	20.03%
70%	\$256,329,659	21.93%
75%	\$260,348,559	23.85%
80%	\$264,998,574	26.06%
85%	\$270,429,825	28.64%
90%	\$277,194,533	31.86%
95%	\$286,745,689	36.40%
100%	\$350,627,912	66.79%





* Correlated assumption (sensitivity data may be misleading)