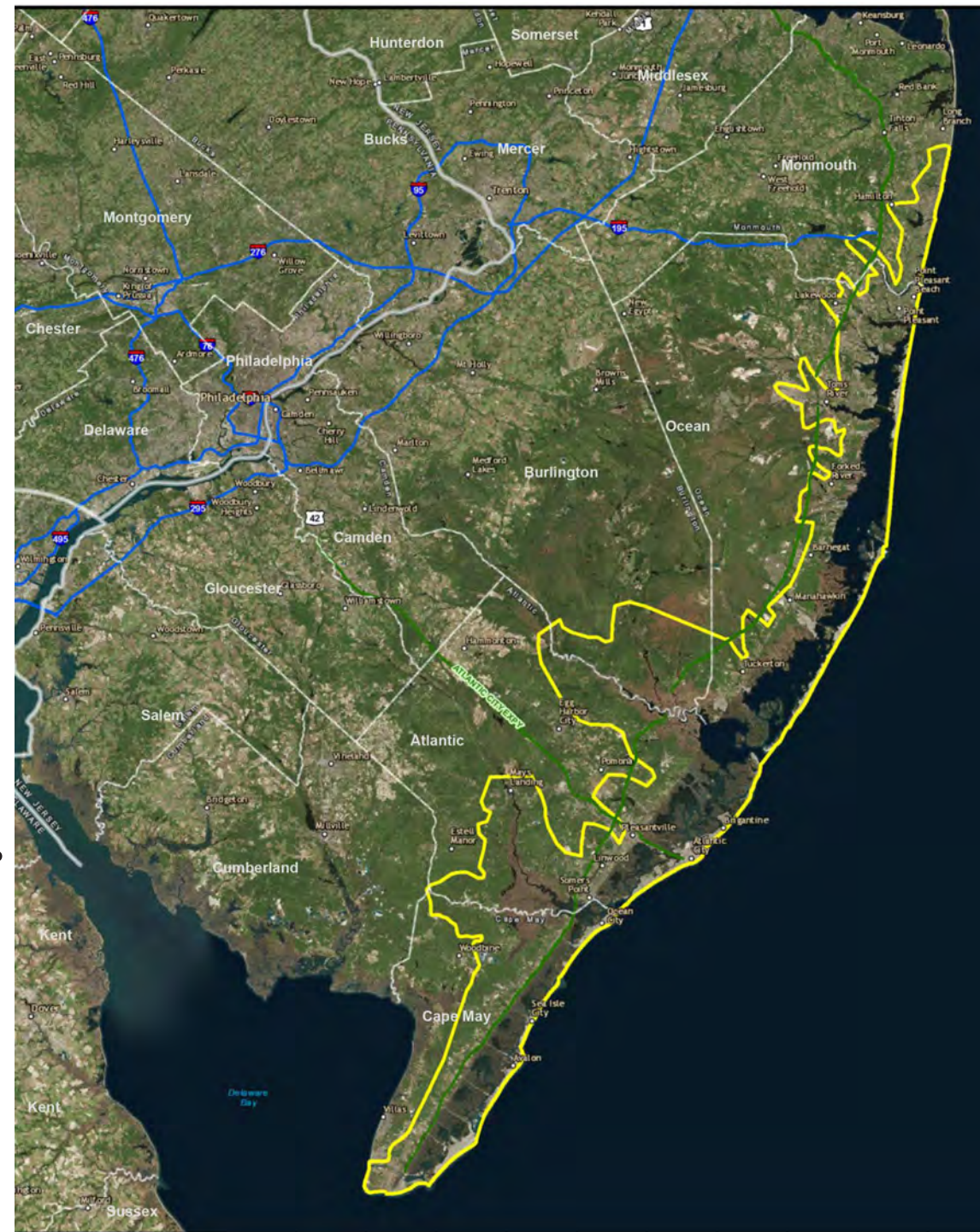


NEW JERSEY BACK BAYS FLOOD RISK MANAGEMENT FEASIBILITY STUDY

STUDY OVERVIEW

Study Area

The New Jersey Back Bays study area encompasses five counties, 89 municipalities, approximately 950 square miles of land and water and nearly 3500 miles of coastline.



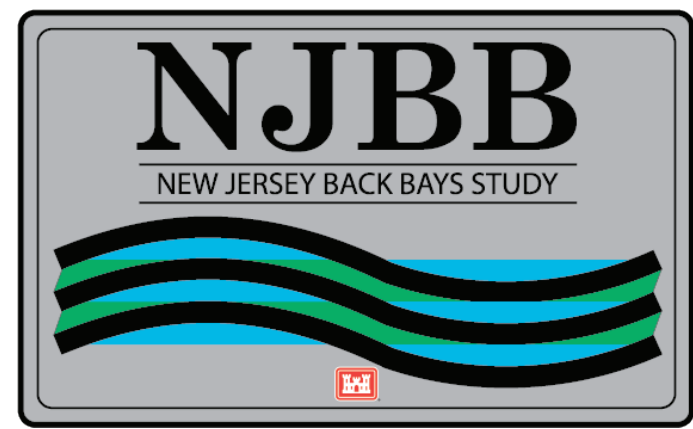
Study Area outlined in yellow

Study Premise

The region experienced major impacts and devastation during Hurricane Sandy and subsequent coastal events owing to the low elevation areas and highly developed residential and commercial infrastructure along the back bays coastline.



U.S. Army Corps of Engineers
Philadelphia District



NJDEP

Study Purpose

- Investigate coastal flooding problems and solutions to reduce damages that affect population, critical infrastructure, critical facilities, property, and ecosystems.
- Assess the feasibility of implementing system-wide solutions such as structural, non-structural, natural and nature-based features, and policy/programmatic strategies.
- Implement comprehensive coastal flooding strategies to increase resilience and to reduce risk from future storms and impacts of sea level change (SLC).

Study Result

- Feasibility report with integrated NEPA compliance documentation recommending phased and scaled flood risk management design and construction opportunities.
- Alignment with broader climate change adaptation, community resilience planning, and sustainability principles towards a shared climate change adaptation vision for the region amongst the USACE and stakeholders.
- Recommendations for non-USACE entities including floodplain management, Community Rating System, and hurricane evacuation plan enhancement opportunities

How Will Public Input be Incorporated into the Study?

- Identify alternatives to be considered.
- Connect with stakeholders interested in participating.
- Determine new sources of data or information.
- Participate and comment at several venues including Stakeholder and Public Meetings throughout the study period.
- Comment upon the draft Interim Feasibility Report/Environmental Scoping Document in early 2019.
- Additional information is available at the NJBB web portal: <http://www.nap.usace.army.mil/Missions/Civil-Works/New-Jersey-Back-Bays-Coastal-Storm-Risk-Management/>

How Can Comments be provided to the Army Corps of Engineers?

- A written comment form may be filled out at this meeting and placed in the comment box.
- Comments may be emailed or mailed to:

U.S. Army Corps of Engineers
Attn. Public Affairs Office
100 Penn Square East
Wanamaker Building, 7th Floor South
Philadelphia, PA 19107

Email: PDPA-NAP@usace.army.mil

Phone Number 215-656-6500