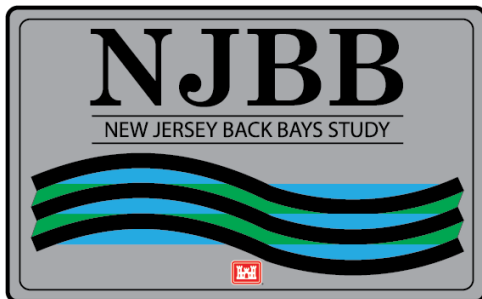

ENGINEERING APPENDIX
STORM SURGE BARRIER CYCLE 2
SCREENING ANALYSIS

NEW JERSEY BACK BAYS
COASTAL STORM RISK MANAGEMENT
FEASIBILITY STUDY

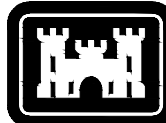
PHILADELPHIA, PENNSYLVANIA

APPENDIX B.7D

August 2021

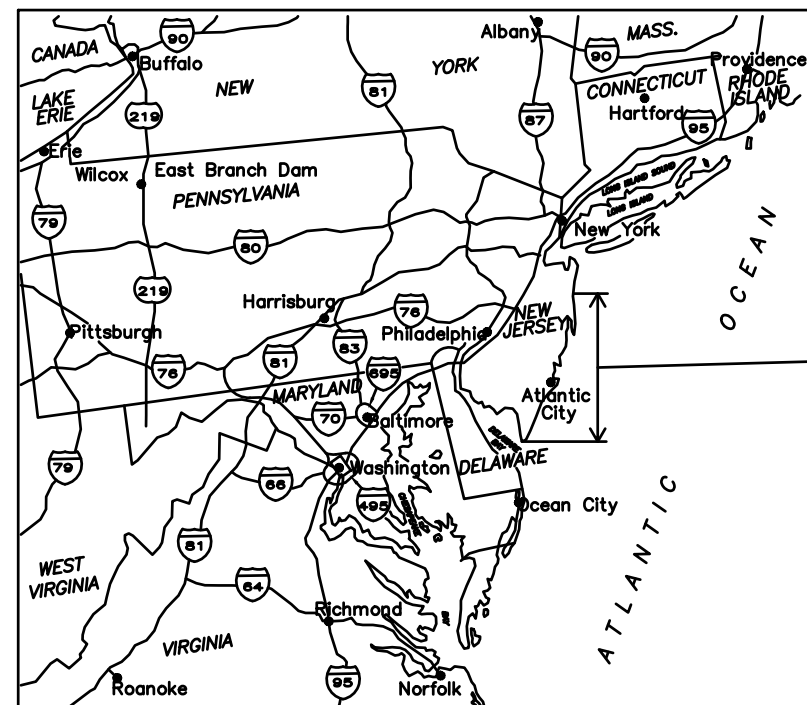


THIS PAGE HAS BEEN INTENTIONALLY LEFT BLANK



US Army Corps
of Engineers
PHILADELPHIA
DISTRICT

NEW JERSEY BACK BAYS CSRM FEASIBILITY STUDY STORM SURGE BARRIER CYCLE 2 SCREENING



N
VICINITY MAP
N.T.S.

| DRAWING INDEX | |
|---------------|-------------------------------------|
| SHEET NUMBER | DESCRIPTION |
| G-001 | COVER SHEET |
| C-101 | CAPE MAY CANAL SSB |
| C-102 | CAPE MAY INLET SSB |
| C-103 | HEREFORD INLET SSB |
| C-104 | TOWNSENDS INLET SSB |
| C-105 | CORSON INLET SSB |
| C-106 | GREAT EGG HARBOR INLET SSB |
| C-107 | ABSECON INLET SSB |
| C-108 | BRIGANTINE AND LITTLE EGG INLET SSB |
| C-109 | BARNEGAT INLET SSB |
| C-110 | MANASQUAN INLET SSB |
| C-111 | SHARK RIVER INLET SSB |
| C-112 | WILDWOOD BLVD BAY CLOSURE |
| C-113 | STONE HARBOR BLVD BAY CLOSURE |
| C-114 | SEA ISLE BLVD BAY CLOSURE |
| C-115 | SOUTHERN OCEAN CITY BAY CLOSURE |
| C-116 | ABSECON BLVD BAY CLOSURE |
| C-117 | NORTH POINT BAY CLOSURE |
| C-118 | HOLGATE BAY CLOSURE |
| C-119 | POINT PLEASANT CANAL BAY CLOSURE |

SOLICITATION NO:-
CONTRACT NO:-
ISSUE/SUBMITTAL DATE:DECEMBER 2018

| | | |
|--|----------------|--------------|
| ISSUE/SUBMITTAL DATE: DECEMBER 2018 | DES BY: SJM | REVIEWED BY: |
| | DWN BY: SJM | CKD BY: |

U.S. ARMY CORPS OF ENGINEERS
PHILADELPHIA
DISTRICT

STORM SURGE BARRIER
CYCLE 2 SCREENING
NEW JERSEY BACK BAYS
CSRM FEASIBILITY STUDY
COVER SHEET

SHEET NUMBER
G-001



US Army Corps
of Engineers
PHILADELPHIA
DISTRICT

ISSUE/SUBMITTAL DATE:
DECEMBER 2018

U.S. ARMY CORPS OF ENGINEERS
PHILADELPHIA
DISTRICT

| | |
|--------------|-----|
| DES BY: | |
| DWN BY: | SJW |
| CKD BY: | |
| REVIEWED BY: | |

STORM SURGE BARRIER
CYCLE 2 SCREENING

NEW JERSEY BACK BAYS
CSRM FEASIBILITY STUDY

CAPE MAY CANAL SSB

SHEET NUMBER

C-101



US Army Corps
of Engineers
PHILADELPHIA
DISTRICT

| | | |
|--|----------------|--------------|
| ISSUE/SUBMITTAL DATE: DECEMBER 2018 | DES BY: SJM | REVIEWED BY: |
| | DWN BY: SJM | CKD BY: |

U.S. ARMY CORPS OF ENGINEERS
PHILADELPHIA
DISTRICT

STORM SURGE BARRIER
CYCLE 2 SCREENING
NEW JERSEY BACK BAYS
CSRM FEASIBILITY STUDY
CAPE MAY INLET SSB



SHEET NUMBER

C-102



US Army Corps
of Engineers
PHILADELPHIA
DISTRICT

| | | |
|--|----------------|--------------|
| ISSUE/SUBMITTAL DATE: DECEMBER 2018 | DES BY: | REVIEWED BY: |
| | DWN BY: SJW | CKD BY: |

U.S. ARMY CORPS OF ENGINEERS
PHILADELPHIA
DISTRICT

STORM SURGE BARRIER
CYCLE 2 SCREENING
NEW JERSEY BACK BAYS
CSRM FEASIBILITY STUDY
HEREFORD INLET SSB

SHEET NUMBER
C-103



US Army Corps
of Engineers
PHILADELPHIA
DISTRICT

| | | | |
|--|---------------------|---------------------|--------------|
| ISSUE/SUBMITTAL DATE: DECEMBER 2018 | DESIGNED BY: SJM | DESIGNED BY: SJM | REVIEWED BY: |
| U.S. ARMY CORPS OF ENGINEERS PHILADELPHIA DISTRICT | | CKD BY: | |

STORM SURGE BARRIER
CYCLE 2 SCREENING
NEW JERSEY BACK BAYS
CSRM FEASIBILITY STUDY
TOWNSENDS INLET SSB

SHEET NUMBER
C-104



US Army Corps
of Engineers
PHILADELPHIA
DISTRICT

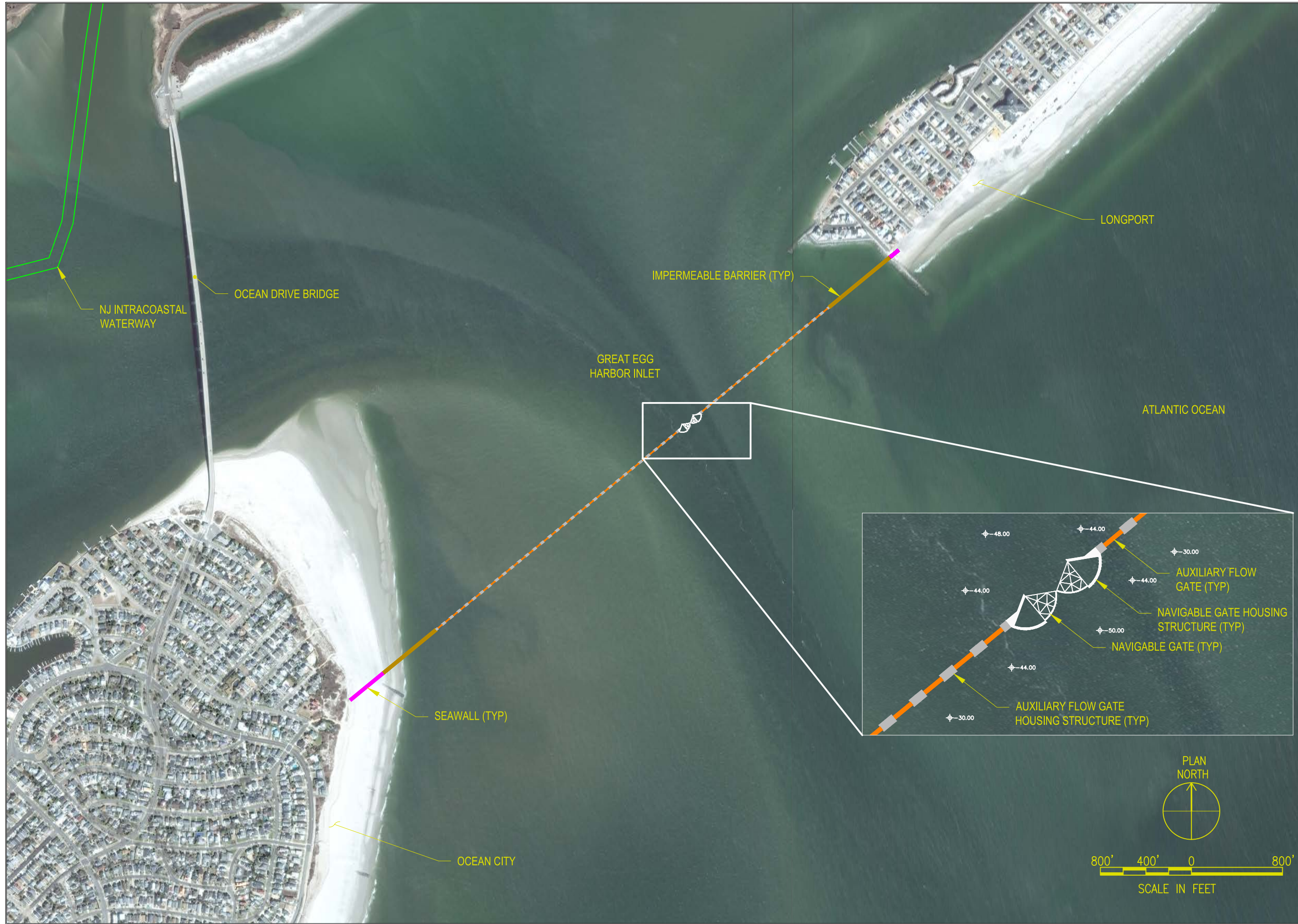
| | | |
|--|----------------|--------------|
| ISSUE/SUBMITTAL DATE: DECEMBER 2018 | DES BY: SJM | REVIEWED BY: |
| | DWN BY: SJM | CKD BY: |

| | | | |
|--|---|---|---|
| U.S. ARMY CORPS OF ENGINEERS PHILADELPHIA DISTRICT | - | - | - |
|--|---|---|---|

STORM SURGE BARRIER
CYCLE 2 SCREENING
NEW JERSEY BACK BAYS
CSRM FEASIBILITY STUDY
CORSON INLET SSB

SHEET NUMBER
C-105





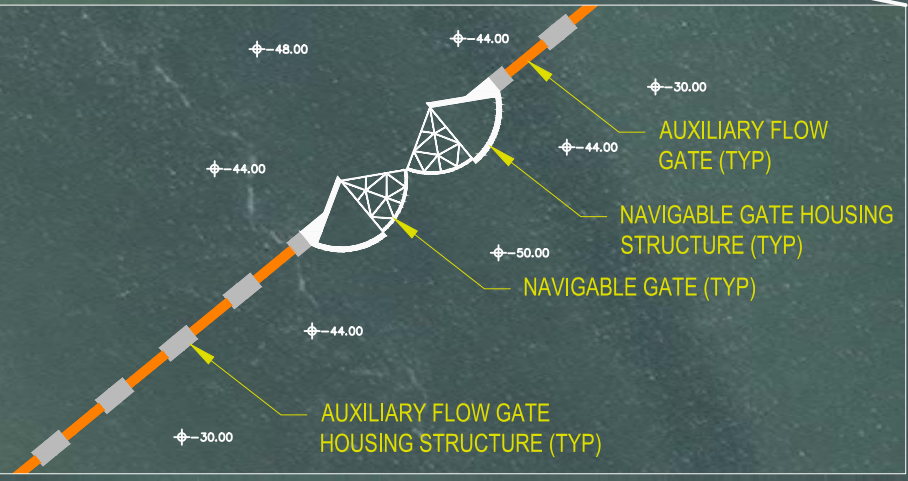
US Army Corps
of Engineers
PHILADELPHIA
DISTRICT

| | | |
|--|----------------|--------------|
| ISSUE/SUBMITTAL DATE: DECEMBER 2018 | DES BY: SJM | REVIEWED BY: |
| | DWN BY: SJM | CKD BY: |

U.S. ARMY CORPS OF ENGINEERS
PHILADELPHIA
DISTRICT

STORM SURGE BARRIER
CYCLE 2 SCREENING
NEW JERSEY BACK BAYS
CSRM FEASIBILITY STUDY
GREAT EGG HARBOR INLET SSB

SHEET NUMBER
C-106





US Army Corps
of Engineers
PHILADELPHIA
DISTRICT

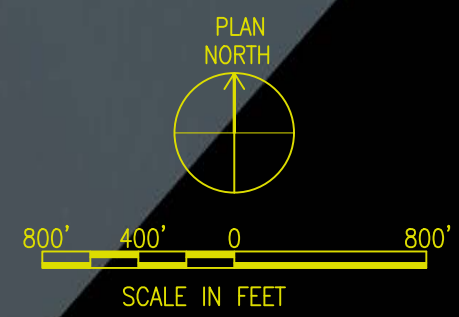
| | | | |
|--|----------------|---------------------|--------------|
| ISSUE/SUBMITTAL DATE: DECEMBER 2018 | DES BY: SJM | DESIGNED BY: SJM | REVIEWED BY: |
| | DWN BY: SJM | CKD BY: | |

U.S. ARMY CORPS OF ENGINEERS
PHILADELPHIA
DISTRICT

STORM SURGE BARRIER
CYCLE 2 SCREENING
NEW JERSEY BACK BAYS
CSRM FEASIBILITY STUDY
ABSECON INLET SSB

SHEET NUMBER

C-107





US Army Corps
of Engineers
PHILADELPHIA
DISTRICT

ISSUE/SUBMITTAL DATE:
DECEMBER 2018

U.S. ARMY CORPS OF ENGINEERS
PHILADELPHIA
DISTRICT

DES BY:
S/JW

DWN BY:
S/JW

REVIEWED BY:
CKD BY:

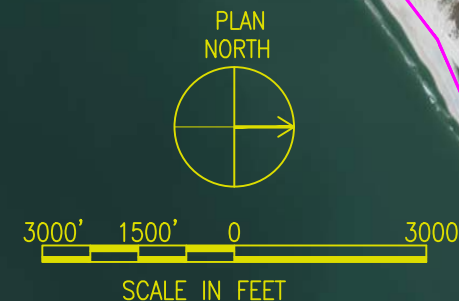
STORM SURGE BARRIER
CYCLE 2 SCREENING

NEW JERSEY BACK BAYS
CSRM FEASIBILITY STUDY

BRIGANTINE AND LITTLE EGG INLET SSB

SHEET NUMBER

C-108





US Army Corps
of Engineers
PHILADELPHIA
DISTRICT

ISSUE/SUBMITTAL DATE:
DECEMBER 2018

U.S. ARMY CORPS OF ENGINEERS
PHILADELPHIA
DISTRICT

STORM SURGE BARRIER
CYCLE 2 SCREENING

NEW JERSEY BACK BAYS
CSRM FEASIBILITY STUDY

BARNEGAT INLET SSB

DES BY:
SJM

CKD BY:

·

·

·

SHEET NUMBER

C-109

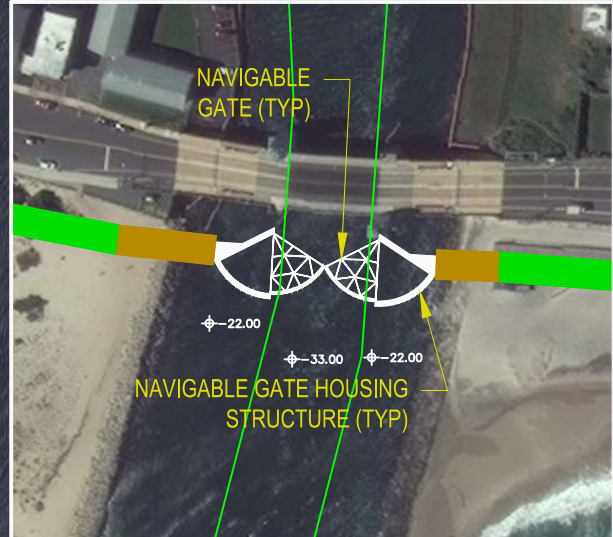
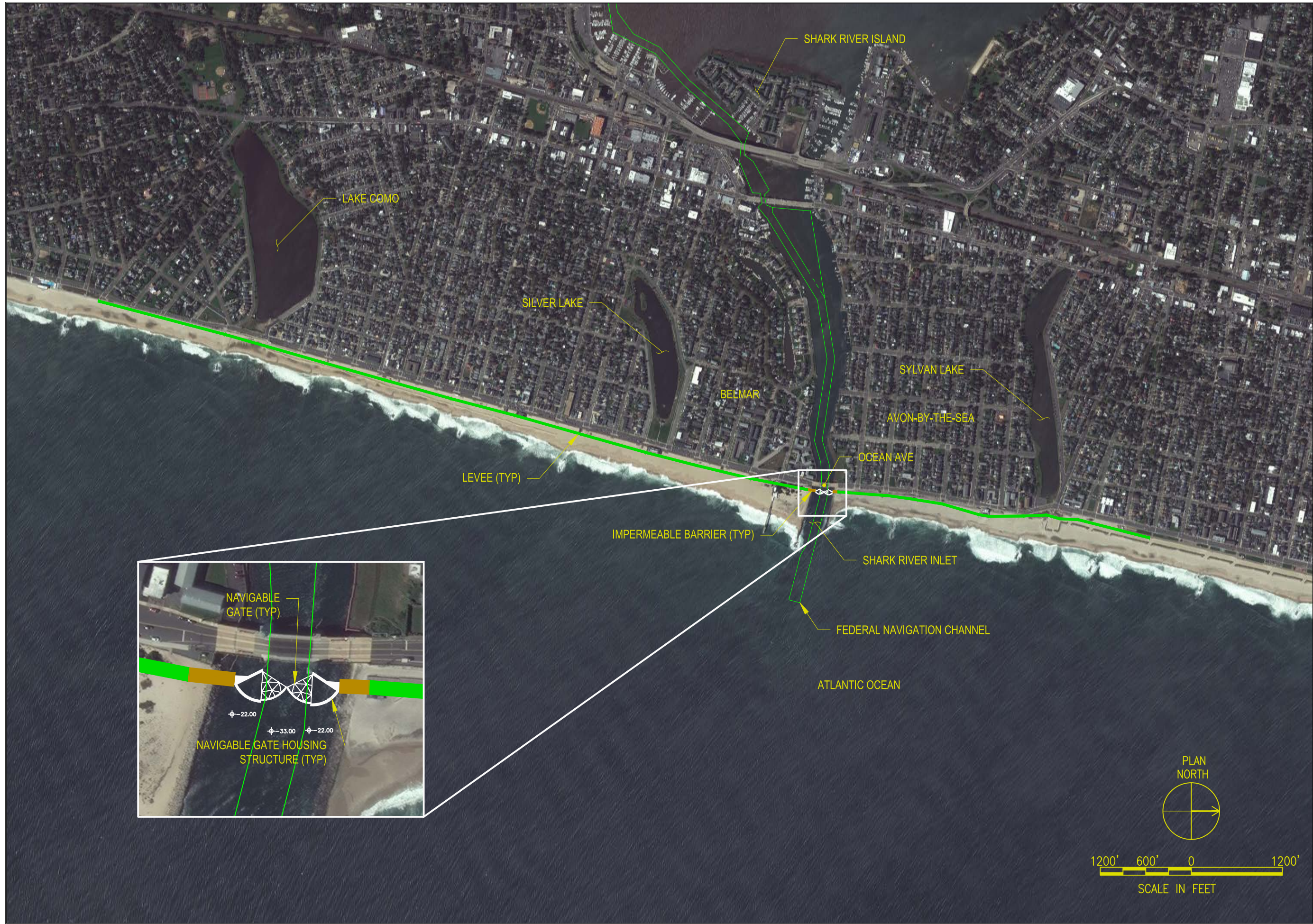


| | | | |
|--|-----------------|----------------------|--------------|
| ISSUE/SUBMITTAL DATE: DECEMBER 2018 | DES BY: S/JW | DESIGNED BY: S/JW | REVIEWED BY: |
| U.S. ARMY CORPS OF ENGINEERS PHILADELPHIA DISTRICT | | | |

STORM SURGE BARRIER
CYCLE 2 SCREENING
NEW JERSEY BACK BAYS
CSRM FEASIBILITY STUDY
MANASQUAN INLET SSB

SHEET NUMBER
C-110





US Army Corps
of Engineers
PHILADELPHIA
DISTRICT

ISSUE/SUBMITTAL DATE:
DECEMBER 2018

DWN BY:
SJW

DES BY:
SJW

REVIEWED BY:
CKD

U.S. ARMY CORPS OF ENGINEERS
PHILADELPHIA
DISTRICT

STORM SURGE BARRIER
CYCLE 2 SCREENING

NEW JERSEY BACK BAYS
CSRM FEASIBILITY STUDY

SHARK RIVER INLET SSB

SHEET NUMBER

C-111





US Army Corps
of Engineers
PHILADELPHIA
DISTRICT

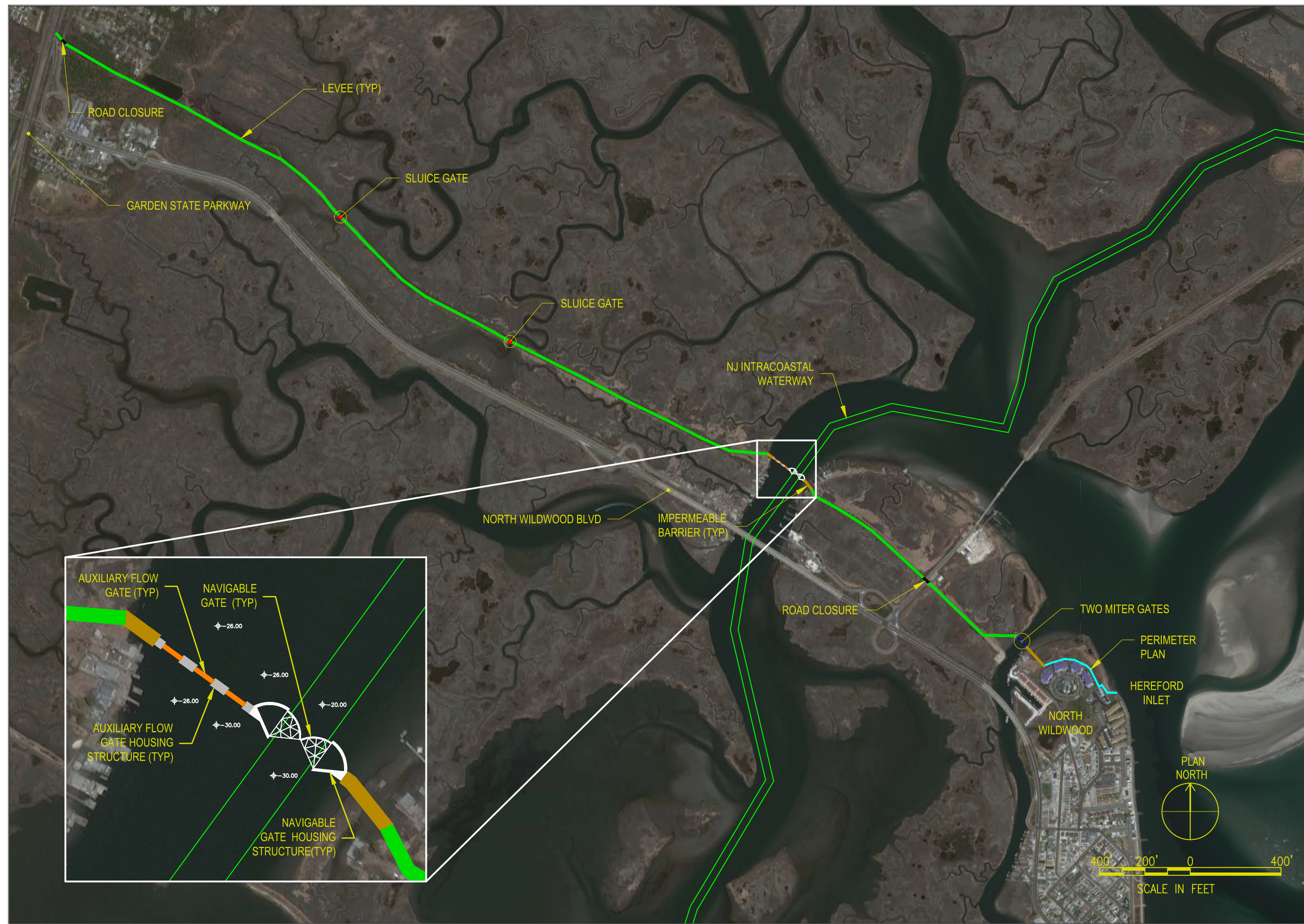
| | | |
|--|----------------|--------------|
| ISSUE/SUBMITTAL DATE: DECEMBER 2018 | DES BY: SJM | REVIEWED BY: |
| | DWN BY: SJM | CKD BY: |

U.S. ARMY CORPS OF ENGINEERS
PHILADELPHIA
DISTRICT

STORM SURGE BARRIER
CYCLE 2 SCREENING
NEW JERSEY BACK BAYS
CSRM FEASIBILITY STUDY
WILDWOOD BLVD BAY CLOSURE

SHEET NUMBER

C-112





US Army Corps
of Engineers
PHILADELPHIA
DISTRICT

| | | |
|--|----------------|--------------|
| ISSUE/SUBMITTAL DATE: DECEMBER 2018 | DES BY: SJM | REVIEWED BY: |
| | DWN BY: SJM | CKD BY: |

U.S. ARMY CORPS OF ENGINEERS
PHILADELPHIA
DISTRICT

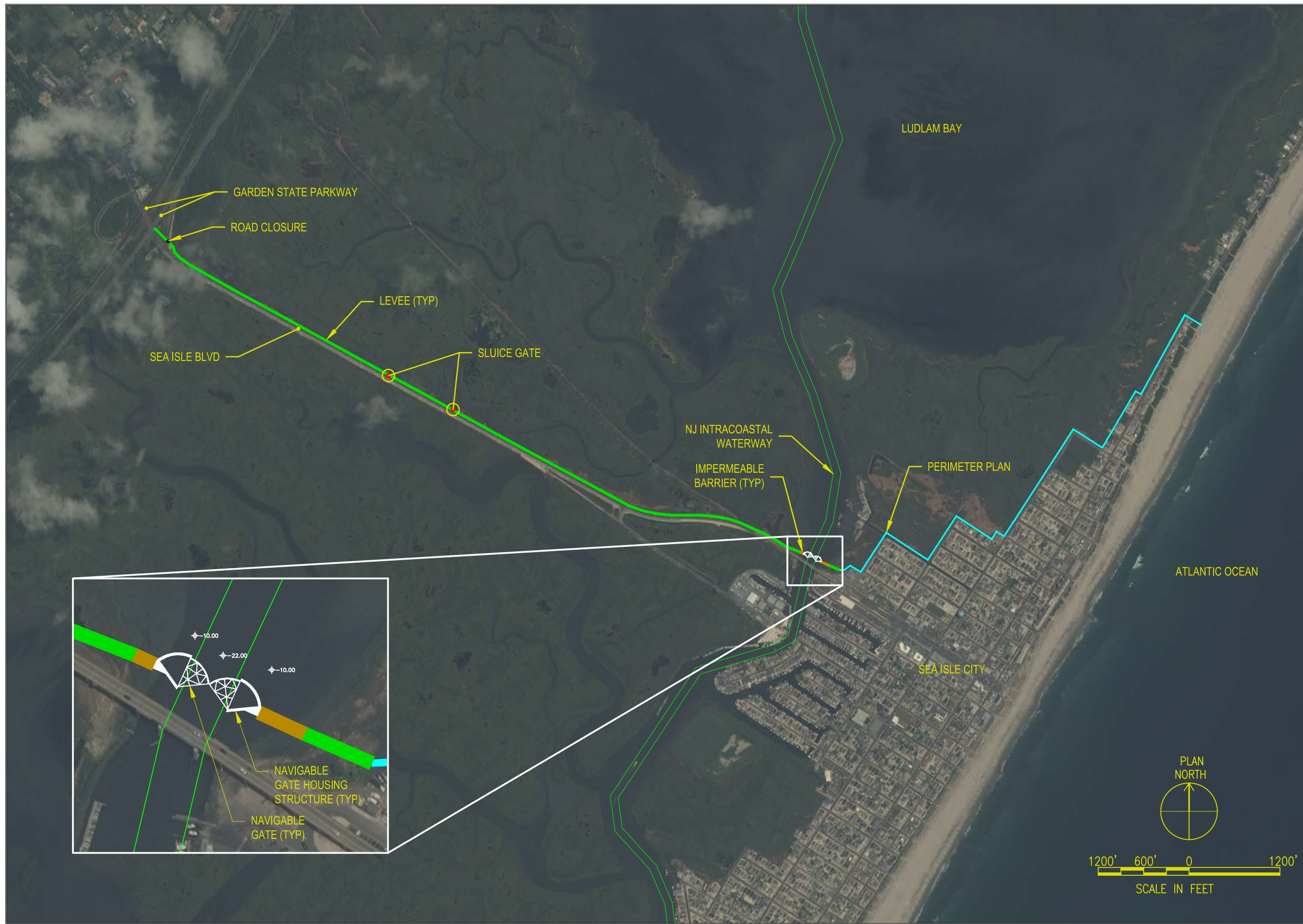
STORM SURGE BARRIER
CYCLE 2 SCREENING
NEW JERSEY BACK BAYS
CSRM FEASIBILITY STUDY
STONE HARBOR BLVD BAY CLOSURE

SHEET NUMBER

C-113



US Army Corps
of Engineers
PHILADELPHIA
DISTRICT



| | | |
|--|----------------|--------------|
| ISSUE/SUBMITTAL DATE: DECEMBER 2018 | DES BY: SJM | REVIEWED BY: |
| | | |
| U.S. ARMY CORPS OF ENGINEERS PHILADELPHIA DISTRICT | | |

STORM SURGE BARRIER
CYCLE 2 SCREENING
NEW JERSEY BACK BAYS
CSRM FEASIBILITY STUDY
SEA ISLE BLVD BAY CLOSURE



SHEET NUMBER
C-114



| | | | |
|--|----------------|---------------------|--------------|
| ISSUE/SUBMITTAL DATE: DECEMBER 2018 | DES BY: SJM | DESIGNED BY: SJM | REVIEWED BY: |
| U.S. ARMY CORPS OF ENGINEERS PHILADELPHIA DISTRICT | | DWN BY: SJM | CKD BY: |

STORM SURGE BARRIER
CYCLE 2 SCREENING
NEW JERSEY BACK BAYS
CSRM FEASIBILITY STUDY
SOUTHERN OCEAN CITY BAY CLOSURE

SHEET NUMBER
C-115





| | | | |
|--|-----------------|-----------------|--------------|
| ISSUE/SUBMITTAL DATE: DECEMBER 2018 | DES BY: S/JW | DES BY: S/JW | REVIEWED BY: |
| U.S. ARMY CORPS OF ENGINEERS PHILADELPHIA DISTRICT | | | |

STORM SURGE BARRIER
CYCLE 2 SCREENING
NEW JERSEY BACK BAYS
CSRM FEASIBILITY STUDY
ABSECON BLVD BAY CLOSURE

SHEET NUMBER
C-116



US Army Corps
of Engineers
PHILADELPHIA
DISTRICT



| | | | |
|--|-----------------|-----------------|--------------|
| ISSUE/SUBMITTAL DATE: DECEMBER 2018 | DES BY: S/JW | DES BY: S/JW | REVIEWED BY: |
| U.S. ARMY CORPS OF ENGINEERS PHILADELPHIA DISTRICT | - | - | - |

STORM SURGE BARRIER
CYCLE 2 SCREENING

NEW JERSEY BACK BAYS
CSRM FEASIBILITY STUDY

NORTH POINT BAY CLOSURE

SHEET NUMBER

C-117



| | | | |
|--|----------------|---------------------|--------------|
| ISSUE/SUBMITTAL DATE: DECEMBER 2018 | DES BY: SJM | DESIGNED BY: SJM | REVIEWED BY: |
| U.S. ARMY CORPS OF ENGINEERS PHILADELPHIA DISTRICT | | CKD BY: | |

STORM SURGE BARRIER
CYCLE 2 SCREENING
NEW JERSEY BACK BAYS
CSRM FEASIBILITY STUDY
HOLGATE BAY CLOSURE

SHEET NUMBER
C-118





US Army Corps
of Engineers
PHILADELPHIA
DISTRICT

ISSUE/SUBMITTAL DATE:
DECEMBER 2018

DESIGNED BY:
SJM

DRAWN BY:
SJM

CKD BY:
SJM

REVIEWED BY:
SJM

U.S. ARMY CORPS OF ENGINEERS
PHILADELPHIA
DISTRICT

STORM SURGE BARRIER
CYCLE 2 SCREENING
NEW JERSEY BACK BAYS
CSRM FEASIBILITY STUDY
POINT PLEASANT CANAL BAY CLOSURE

SHEET NUMBER

C-119