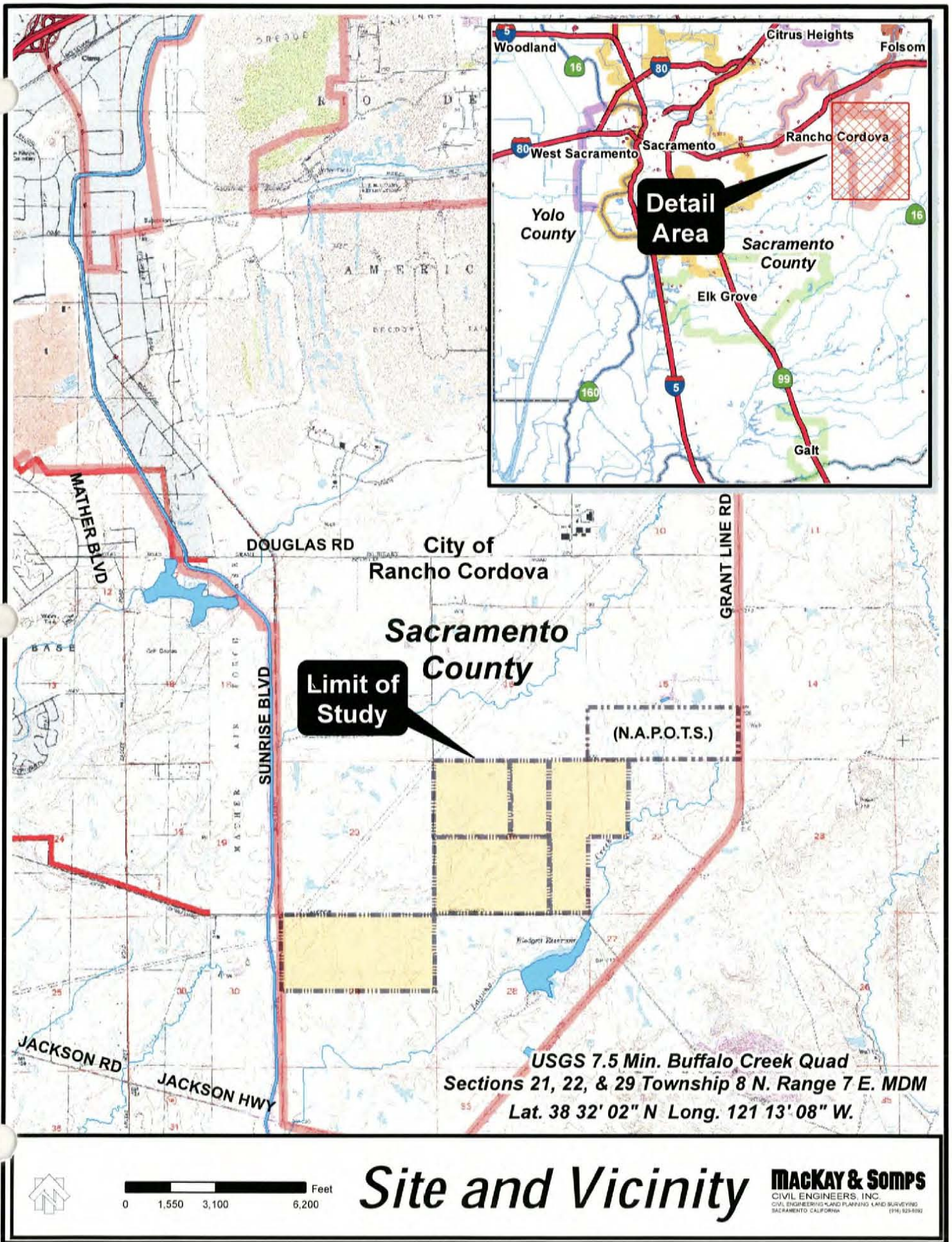


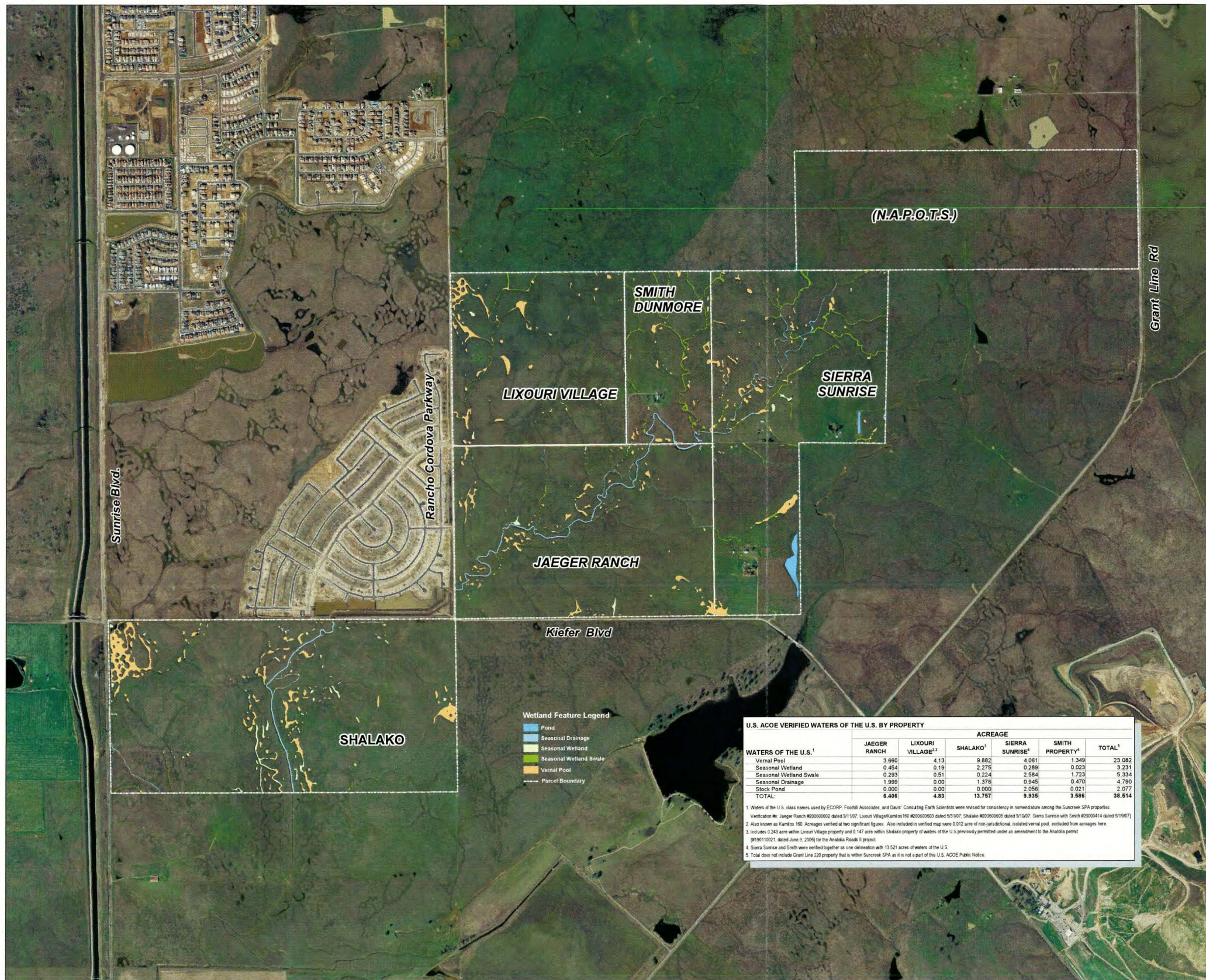
Figure 1 of 19



0 1,550 3,100 6,200 Feet

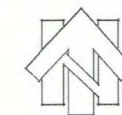
# Site and Vicinity

**Mackay & Somps**  
CIVIL ENGINEERS, INC.  
CIVIL ENGINEERING/LAND PLANNING/LAND SURVEYING  
SACRAMENTO, CALIFORNIA (916) 923-8392



Notes:  
 • Property Lines delineated hereon are based upon record information.  
 • Aerial photography by: Aerials Express Inc. Photo Date: May 2006  
 • Feature class names have been revised from those given in the verified delineations to provide consistency in nomenclature of waters of the U.S. classes among SunCreek properties.  
 • MacKay and Somp's does not warrant the accuracy or completeness of these data products and therefore disclaims all liability for its fitness of use.  
 • Exhibit prepared on March 17, 2008

# Wetlands Composite Exhibit SUNCREEK SPECIFIC PLAN AREA City of Rancho Cordova, California



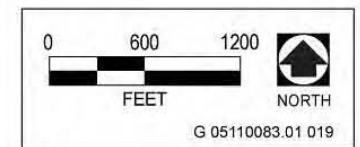
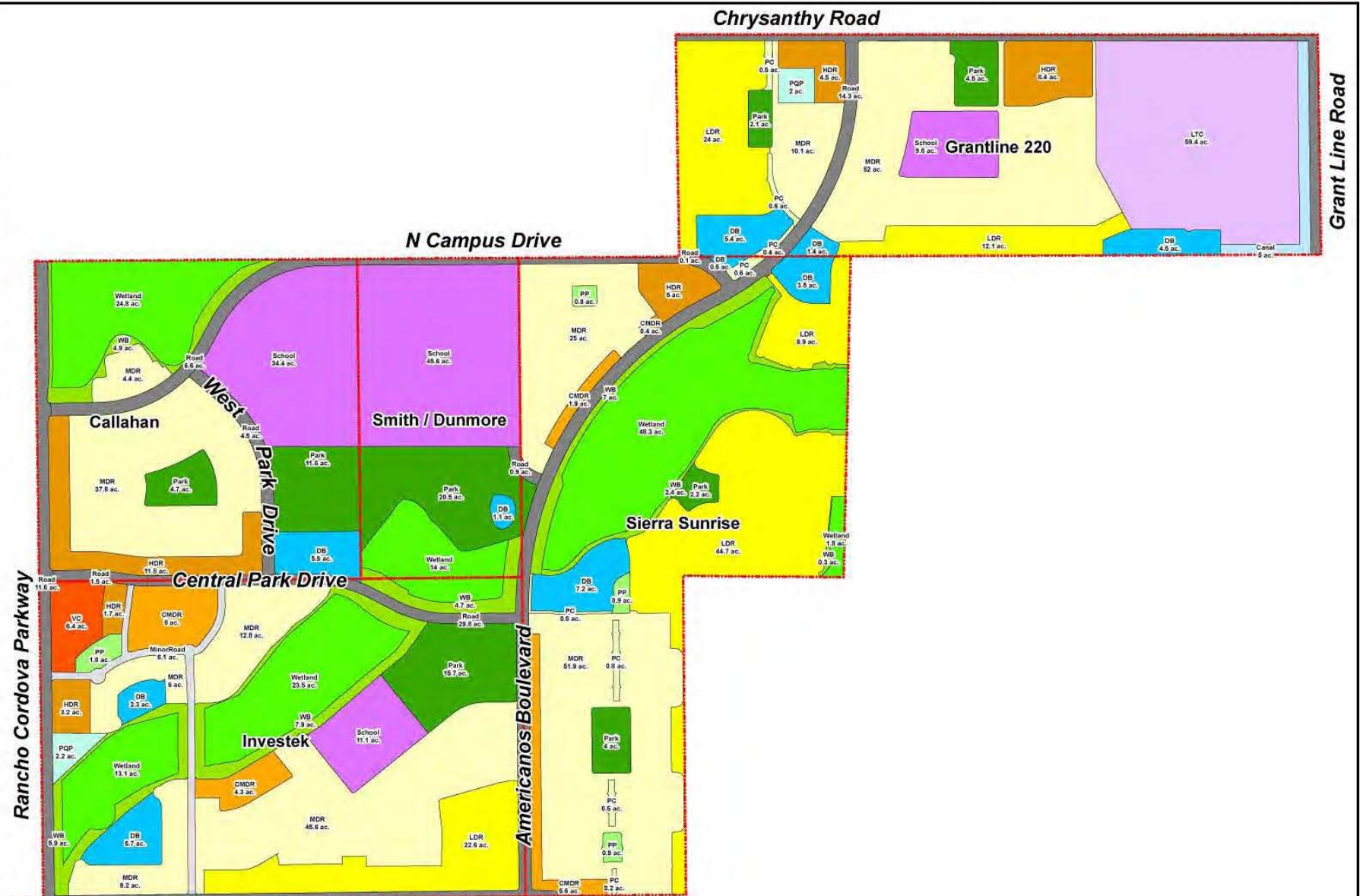
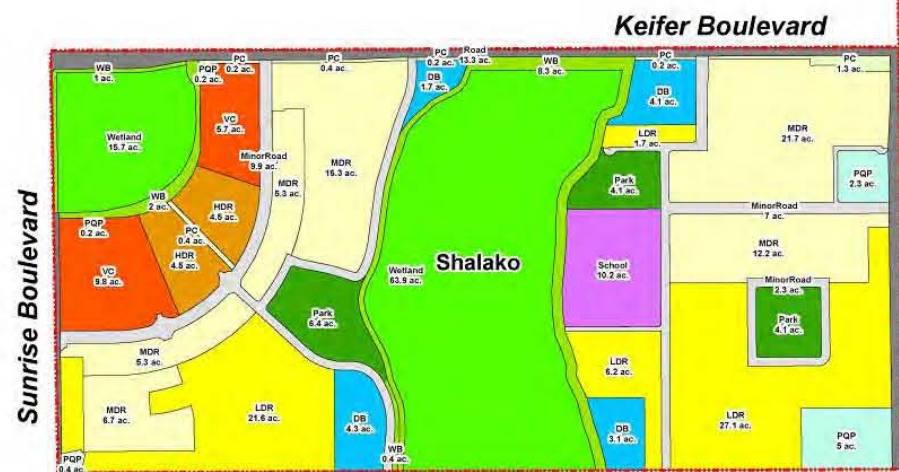
0 250 500 1,000 Feet

**MACKEY & SOMPS**  
 CIVIL ENGINEERS, INC.  
 CIVIL ENGINEERS, LAND PLANNING, LAND SURVEYING,  
 SPECIALISTS IN CALIFORNIA

Map Code	Land Use	Acres	Average Density Per Acre	Dwelling Units
LDR	Low Density Residential	169.4	5.31	900
MDR	Medium Density Residential	322.7	7.80	2,517
CMDR	Compact Medium Density Residential	20.1	14.23	286
HDR	High Density Residential	43.6	22.80	994
VC	Village Commercial	22.9		
LTC	Local Town Center Commercial and Employment Center	59.4		
PQP	Public/Quasi-Public	13.0		
PP	Pocket Park/Neighborhood Green	4.3		
Park	Park	87.1		
PC	Parkway, Paseos and Trails	9.1		
WB	Wetland Preserve Buffer	45.2		
DB	Detention Basin	46.9		
Canal	Stormwater Canal	5.0		
Wetland	Wetland Preserve	203.7		
School	School	110.9		
Minor Road	Minor Roads	23.2		
Major Road	Major Roads	79.0		
	<b>Total</b>	<b>1,265.5</b>		<b>4,697</b>

**Legend**

- Property Boundary
- LDR
- PQP
- School
- CMDR
- LTC
- Park
- VC
- Stormwater Canal
- MDR
- Major Road
- Wetland Preserve Buffer
- Detention Basin
- PC
- Minor Road
- Wetland Preserve
- HDR
- Pocket Park



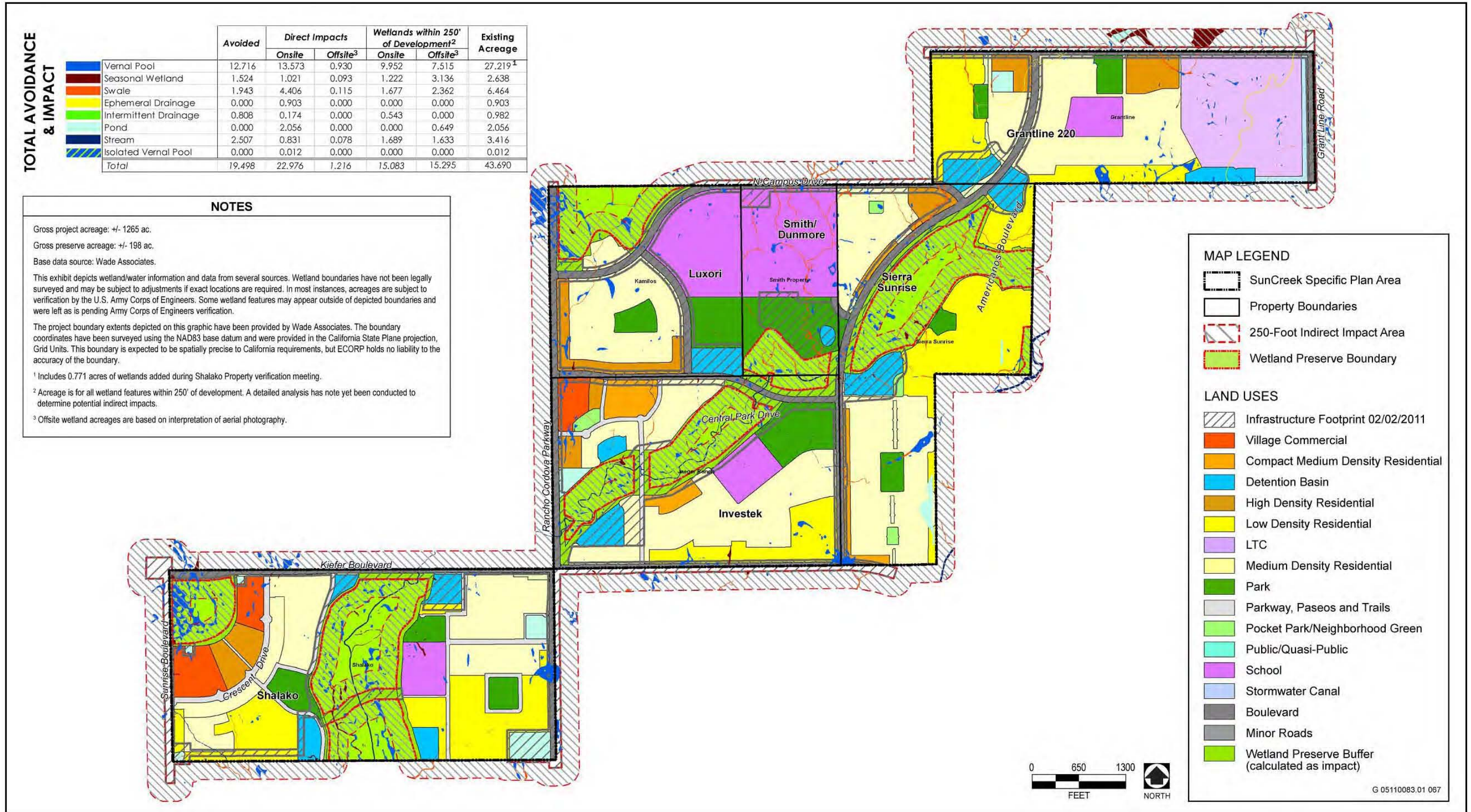
Source: MacKay & Somps 2012

**Proposed Project Alternative Land Use Plan**

**Exhibit 2-4**

SunCreek Specific Plan Project DEIR/DEIS  
City of Rancho Cordova and USACE

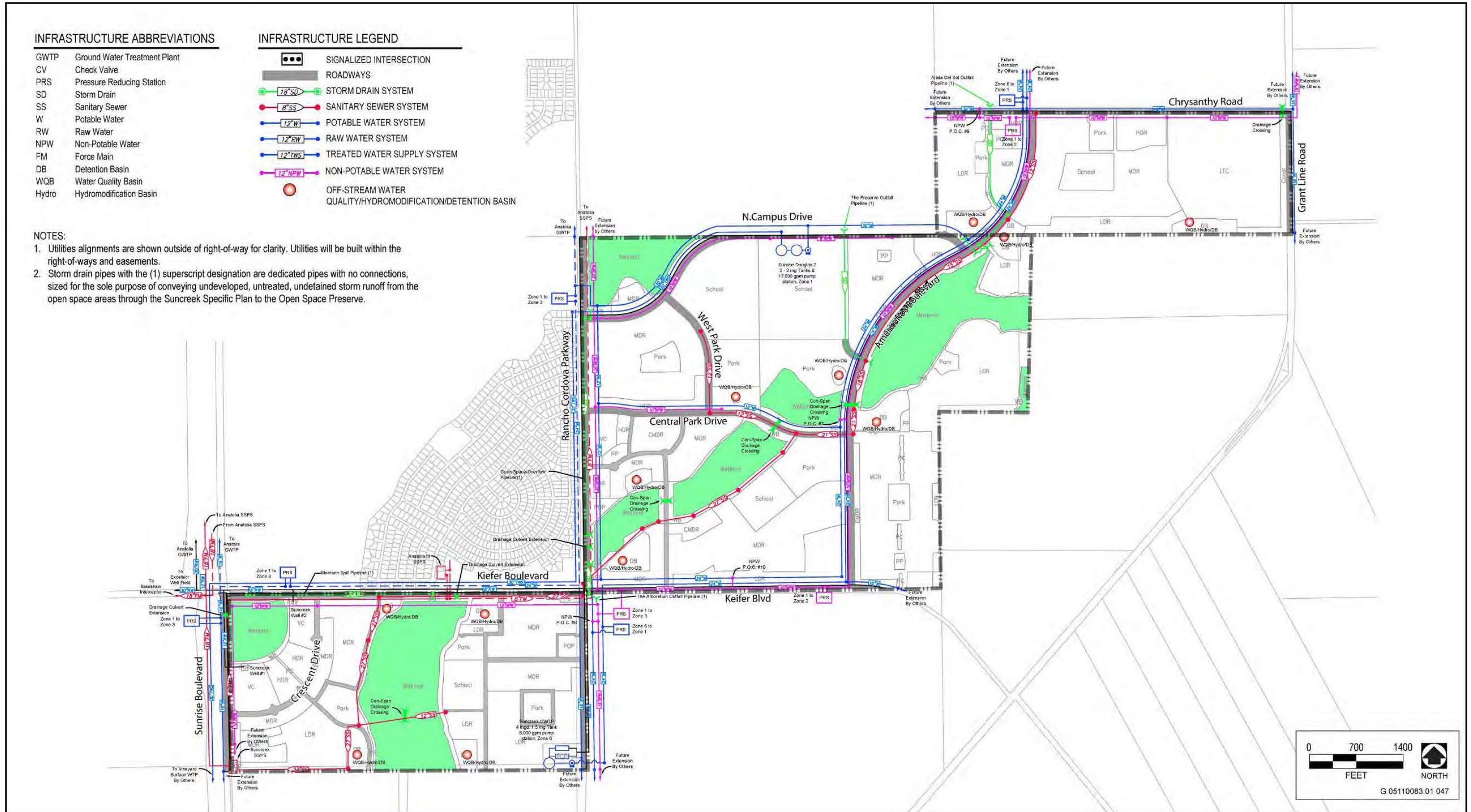
AECOM  
Alternatives



Source: ECORP 2012, Adapted by AECOM in 2012

Proposed Project Alternative – Impacts on Wetlands and Other Waters

Exhibit 3.3-3

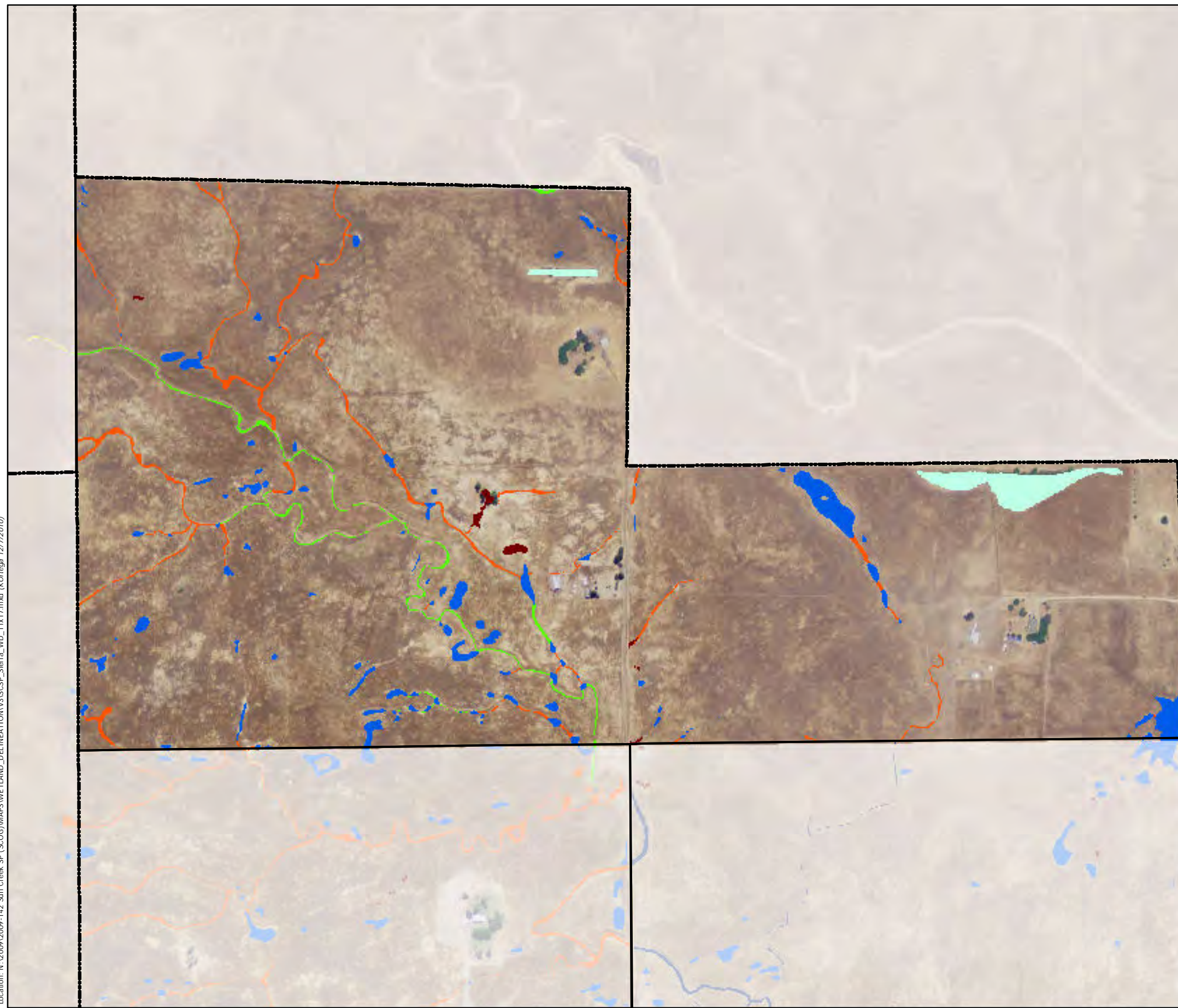


Source: MacKay & Somps 2012

**Proposed Project Alternative Backbone Infrastructure**

**Exhibit 2-5**

Location: N:\2009\2009-142 Sun Creek SP (SCOG)\MAPS\WETLAND\_DELINEATION\3ASCS\SP\_Sierra\_WD\_11x17.mxd (KOrtega 12/7/2010)

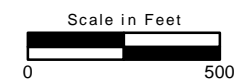
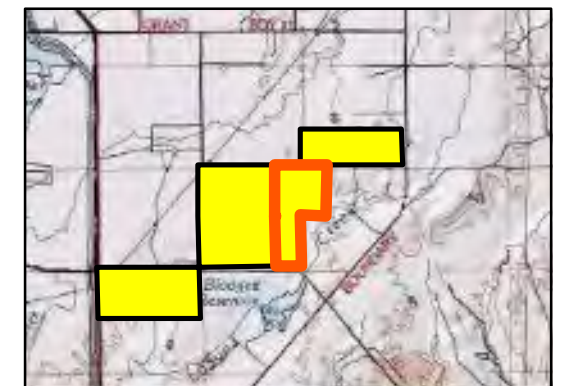


**Figure 3. Wetland Delineation**

**Sierra Sunrise**

- Project Boundary
- Property Boundaries

	Existing Acreage
Vernal Pool	4.060
Seasonal Wetland	0.289
Swale	2.584
Ephemeral Drainage	0.000
Intermittent Drainage	0.943
Pond	2.056
Stream	0.000
Isolated Vernal Pool	0.000
<i>Total</i>	<i>9.932</i>



1" = 500'



WETLANDS

OTHER WATERS

Table with columns: VERNAL POOL, ID, EXISTING ACREAGE, EXISTING SQUARE FEET. Lists 20 vernal pool entries.

Table with columns: VERNAL POOL, ID, EXISTING ACREAGE, EXISTING SQUARE FEET. Lists 20 vernal pool entries.

Table with columns: VERNAL POOL, ID, EXISTING ACREAGE, EXISTING SQUARE FEET. Lists 20 vernal pool entries.

Table with columns: SEASONAL WETLAND, ID, EXISTING ACREAGE, EXISTING SQUARE FEET. Lists 22 seasonal wetland entries.

Table with columns: SEASONAL WETLAND SWALE, ID, EXISTING ACREAGE, EXISTING SQUARE FEET. Lists 13 swale entries.

Table with columns: SEASONAL DRAINAGE, ID, EXISTING ACREAGE, EXISTING SQUARE FEET. Lists 10 seasonal drainage entries.

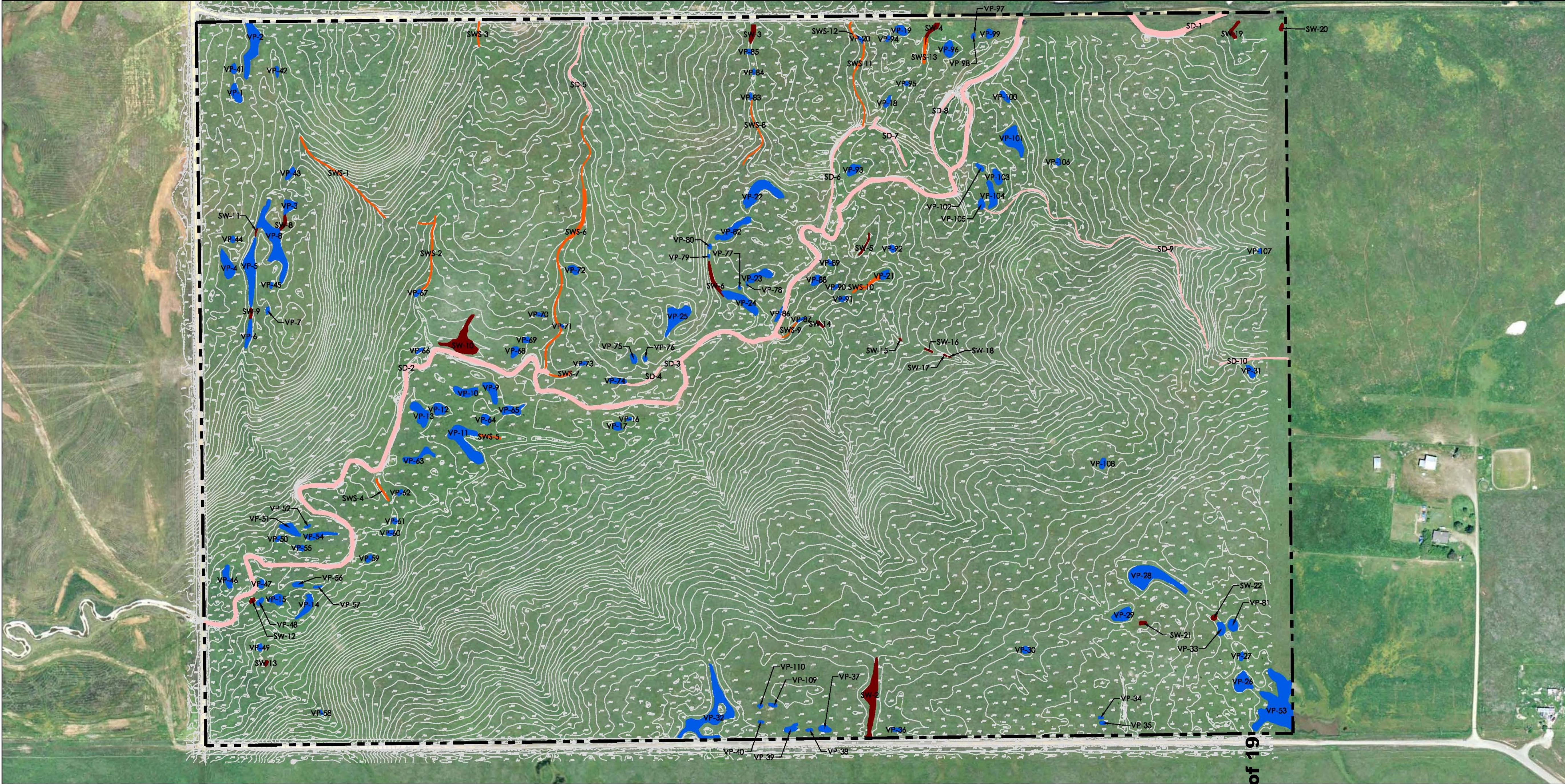
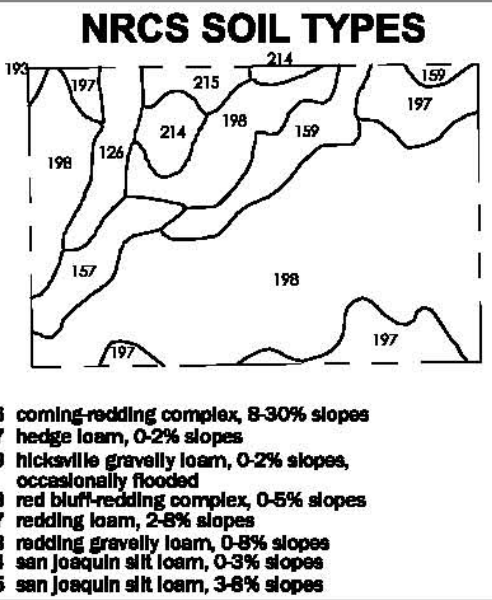
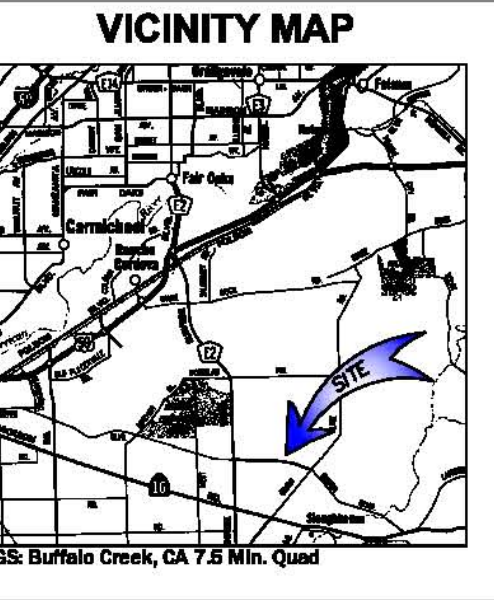
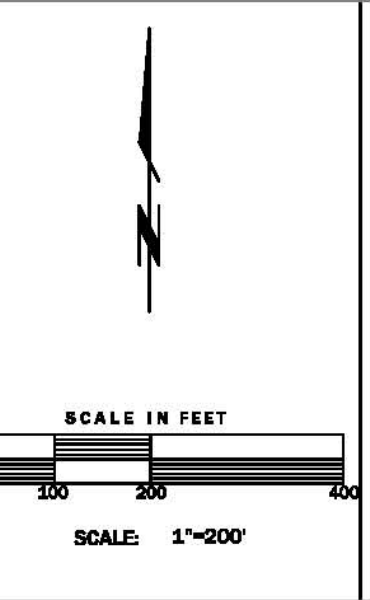


Figure 7 of 19

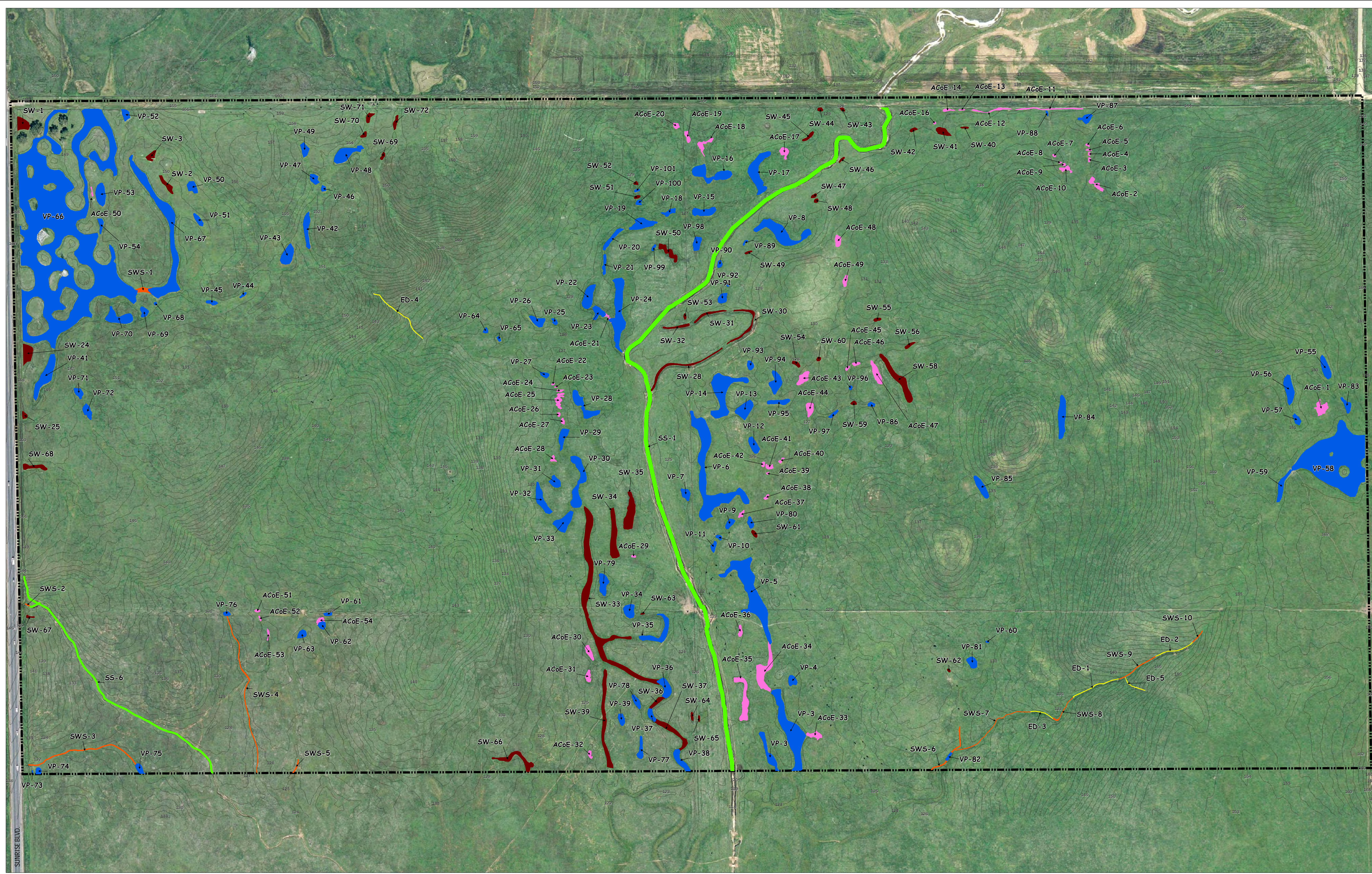
Table with project details: JOB NAME, PROJECT NO., MAP SCALE, DATE, REVISION, FILE NAME.

Table titled 'WATERS OF THE U.S. ACREAGE' showing classification and existing acreage for Wetlands, Other Waters, and a total.

NOTES: Gross project acreage: ± 240 ac. Original wetland data source: DAVIS Consulting Earth Scientists, Inc. Aerial photo source: GlobeXplorer April 2004.



JAEGER RANCH WETLAND DELINEATION. Includes logos for ECORP Consulting, Inc. and contact information for Northern California, San Diego Region, and Orange County offices.



### WETLANDS<sup>3</sup>

VERNAL POOL				SEASONAL WETLAND				
ID	EXISTING SQ FT	EXISTING ACREAGE	ID	EXISTING SQ FT	EXISTING ACREAGE	ID	EXISTING SQ FT	EXISTING ACREAGE
VP-3	15609	0.358	VP-67	794	0.018	SW-1	1907	0.044
VP-4	1083	0.025	VP-68	44933	1.018	SW-2	1144	0.026
VP-5	18087	0.389	VP-69	2121	0.049	SW-3	817	0.019
VP-6	19426	0.446	VP-70	87	0.002	SW-24	2302	0.053
VP-7	1215	0.028	VP-61	349	0.008	SW-25	415	0.010
VP-8	1747	0.130	VP-62	765	0.018	SW-26	2208	0.051
VP-9	885	0.020	VP-63	869	0.020	SW-30	1537	0.035
VP-10	327	0.008	VP-64	312	0.007	SW-31	914	0.021
VP-11	605	0.014	VP-65	211	0.005	SW-32	751	0.017
VP-12	1680	0.039	VP-66	187995	3.627	SW-33	17099	0.395
VP-13	3046	0.070	VP-67	18717	0.384	SW-34	4233	0.097
VP-14	9405	0.215	VP-68	118	0.003	SW-35	4514	0.092
VP-15	2335	0.054	VP-69	934	0.021	SW-36	861	0.020
VP-16	4822	0.111	VP-70	3678	0.084	SW-37	2668	0.061
VP-17	5935	0.136	VP-71	986	0.023	SW-39	5096	0.116
VP-18	834	0.019	VP-72	1371	0.031	SW-40	184	0.004
VP-19	2885	0.066	VP-73	65	0.001	SW-41	1205	0.028
VP-20	1473	0.034	VP-74	484	0.011	SW-42	296	0.007
VP-21	1839	0.043	VP-75	845	0.020	SW-46	190	0.004
VP-22	3018	0.069	VP-76	384	0.009	SW-44	258	0.006
VP-26	1519	0.035	VP-77	1200	0.028	SW-45	537	0.012
VP-24	8629	0.203	VP-78	968	0.022	SW-48	198	0.005
VP-25	398	0.009	VP-79	2237	0.051	SW-47	249	0.006
VP-26	1552	0.036	VP-80	783	0.018	SW-48	212	0.005
VP-27	908	0.021	VP-81	1343	0.031	SW-49	198	0.005
VP-28	3528	0.081	VP-82	334	0.008	SW-50	1174	0.040
VP-29	1787	0.041	VP-83	1128	0.026	SW-61	228	0.005
VP-30	5407	0.129	VP-84	3937	0.090	SW-62	172	0.004
VP-32	1389	0.032	VP-85	2215	0.051	SW-63	190	0.004
VP-33	2963	0.068	VP-86	391	0.009	SW-64	425	0.010
VP-35	3274	0.075	VP-87	1166	0.027	SW-65	302	0.007
VP-34	1861	0.043	VP-88	125	0.003	SW-66	435	0.010
VP-35	3355	0.077	VP-89	174	0.004	SW-68	4673	0.107
VP-36	2384	0.055	VP-90	427	0.010	SW-69	265	0.006
VP-37	190	0.003	VP-91	1120	0.026	SW-40	219	0.005
VP-38	2084	0.048	VP-92	75	0.002	SW-61	396	0.009
VP-39	917	0.021	VP-93	742	0.017	SW-62	119	0.003
VP-41	5219	0.120	VP-94	2672	0.061	SW-63	82	0.002
VP-42	2359	0.054	VP-95	1370	0.031	SW-64	263	0.006
VP-43	2789	0.064	VP-96	176	0.004	SW-65	182	0.004
VP-44	296	0.006	VP-97	449	0.010	SW-66	2784	0.064
VP-45	897	0.014	VP-98	1394	0.032	SW-67	212	0.005
VP-46	339	0.008	VP-99	241	0.006	SW-68	1313	0.030
VP-47	1015	0.023	VP-100	376	0.009	SW-69	322	0.007
VP-48	1743	0.040	VP-101	182	0.004	SW-70	358	0.008
VP-49	1208	0.028				SW-71	633	0.015
VP-50	1337	0.031				SW-72	611	0.014
VP-51	615	0.014						
VP-52	1020	0.023						
VP-53	2668	0.061						
VP-54	748	0.017						
VP-55	2520	0.054						
VP-56	3091	0.071						

SEASONAL WETLAND SWALE			ACoE		
ID	EXISTING SQ FT	EXISTING ACREAGE	ID	EXISTING SQ FT	EXISTING ACREAGE
SWS-1	902	0.021	ACoE-1	1764	0.040
SWS-2	102	0.002	ACoE-2	1025	0.024
SWS-3	146	0.003	ACoE-3	146	0.003
SWS-4	2883	0.067	ACoE-4	117	0.003
SWS-5	293	0.007	ACoE-5	129	0.003
SWS-6	367	0.009	ACoE-6	127	0.003
SWS-7	1667	0.038	ACoE-7	129	0.003
SWS-8	470	0.011	ACoE-8	71	0.002
SWS-9	680	0.016	ACoE-9	133	0.003
SWS-10	242	0.006	ACoE-10	628	0.015
			ACoE-11	1014	0.023
			ACoE-12	716	0.016
			ACoE-13	99	0.002
			ACoE-14	322	0.007
			ACoE-15	76	0.002
			ACoE-17	1802	0.023
			ACoE-18	1039	0.024
			ACoE-19	626	0.014
			ACoE-20	422	0.010
			ACoE-21	148	0.003
			ACoE-22	77	0.002
			ACoE-23	54	0.001
			ACoE-24	153	0.004
			ACoE-25	1161	0.027
			ACoE-26	172	0.004
			ACoE-27	261	0.006
			ACoE-28	334	0.008
			ACoE-29	144	0.003
			ACoE-30	1034	0.023
			ACoE-31	729	0.017
			ACoE-32	341	0.008
			ACoE-33	1098	0.024
			ACoE-34	4719	0.108
			ACoE-35	3683	0.085
			ACoE-36	541	0.012
			ACoE-37	375	0.009
			ACoE-38	234	0.005
			ACoE-39	89	0.002
			ACoE-40	253	0.006
			ACoE-41	448	0.010
			ACoE-42	232	0.005
			ACoE-43	1470	0.034
			ACoE-44	1234	0.029
			ACoE-45	181	0.004
			ACoE-46	328	0.008
			ACoE-47	1508	0.044
			ACoE-48	886	0.020
			ACoE-49	618	0.014
			ACoE-50	149	0.003
			ACoE-51	204	0.005
			ACoE-52	118	0.003
			ACoE-53	290	0.006
			ACoE-54	443	0.010

### OTHER WATERS<sup>3</sup>

SEASONAL STREAM			EPHEMERAL DRAINAGE		
ID	EXISTING SQ FT	EXISTING ACREAGE	ID	EXISTING SQ FT	EXISTING ACREAGE
SS-1	50063	1.149	ED-1	395	0.009
SS-6	8214	0.189	ED-2	317	0.007
			ED-3	190	0.004
			ED-4	545	0.013
			ED-5	193	0.004

WATERS OF THE U.S. ACREAGE <sup>1</sup>		OTHER FEATURES	
CLASSIFICATION	EXISTING ACREAGE	Project Boundary <sup>2</sup>	
<b>WETLANDS:</b>			
Vernal Pool	9.882		
Seasonal Wetland	1.503		
Seasonal Wetland Swale	0.224		
ACoE	0.772		
<b>OTHER WATERS:</b>			
Seasonal Stream	1.338		
Ephemeral Drainage	0.038		
<b>TOTAL:</b>	<b>13.757</b>		

**NOTES**

Gross project acreage: +/- 321 ac.

Aerial photo source: AirPhoto USA April 2004

Topographic data: G.C. Wallace

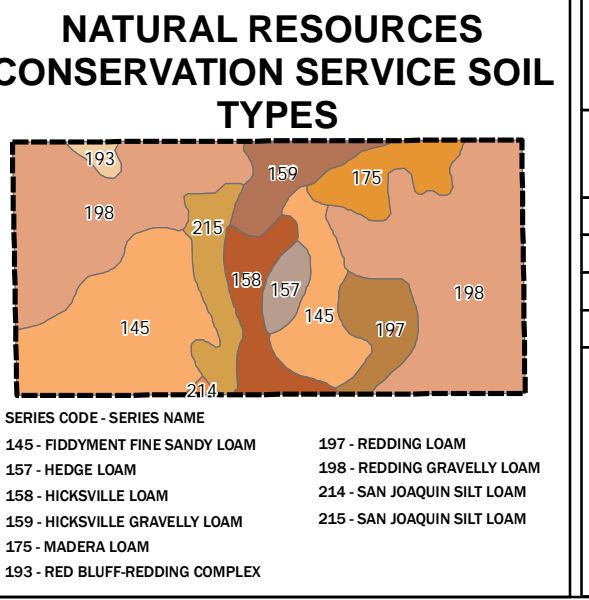
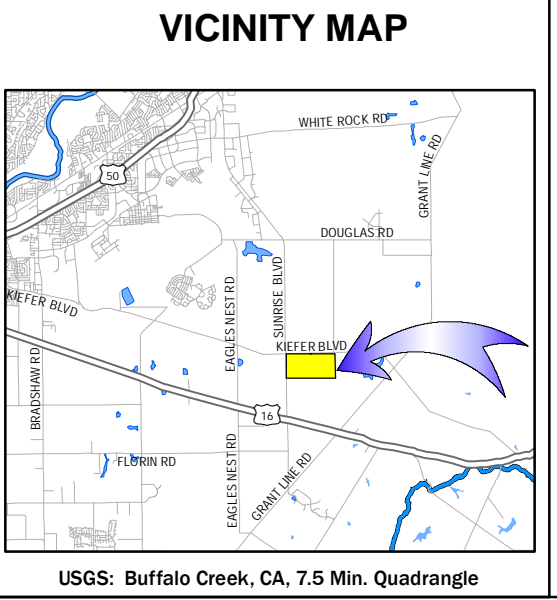
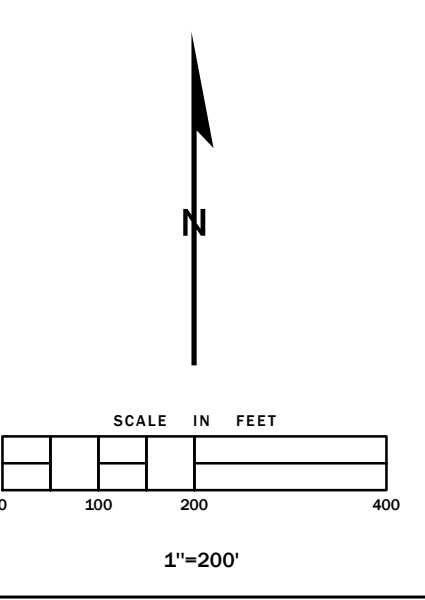
Delineators: Davis Consulting Earth Scientists, Inc.

Wetland Delineation Verification Visit Conducted on 23 April 2007 and 14 May 2007 by A. Sutton (Corps) and A. Ballard (ECORP).

<sup>1</sup> Subject to U.S. Army Corps of Engineers verification. This exhibit depicts information and data produced in strict accord with the wetland delineation methods described in the 1987 Corps of Engineers Wetland Delineation Manual and conforms to Sacramento District specifications. However, wetland boundaries have not been legally surveyed and may be subject to minor adjustments if exact locations are required.

<sup>2</sup> Boundary Source: The project boundary extents depicted on this graphic have been provided by G.C. Wallace. The boundary coordinates have been surveyed using the NAD83 base datum and were provided in the California State Plane projection, Grid Units. This boundary is expected to be spatially precise to California requirements, but ECORP holds no liability to the accuracy of the boundary.

<sup>3</sup> The acreage value for each feature has been rounded to the nearest 1/100 decimal. Summation of these values may not equal the total potential Waters of the U.S. acreage reported.



**SHALAKO PROPERTY**

**WETLAND DELINEATION<sup>1</sup>**

Date: April 25, 2007      REVISION DATE: June 1, 2007      PROJECT NUMBER: 2005-177  
GIS SPECIALIST: JDS      SCALE: 1"=200'      MAP NAME: Shalako\_WD\_v2.mxd

MAP LOCATION: J:\GIS\_Maps\2005-177\_Shalako\_Property\_WD\      QA/QC:      PM:      HIATTC

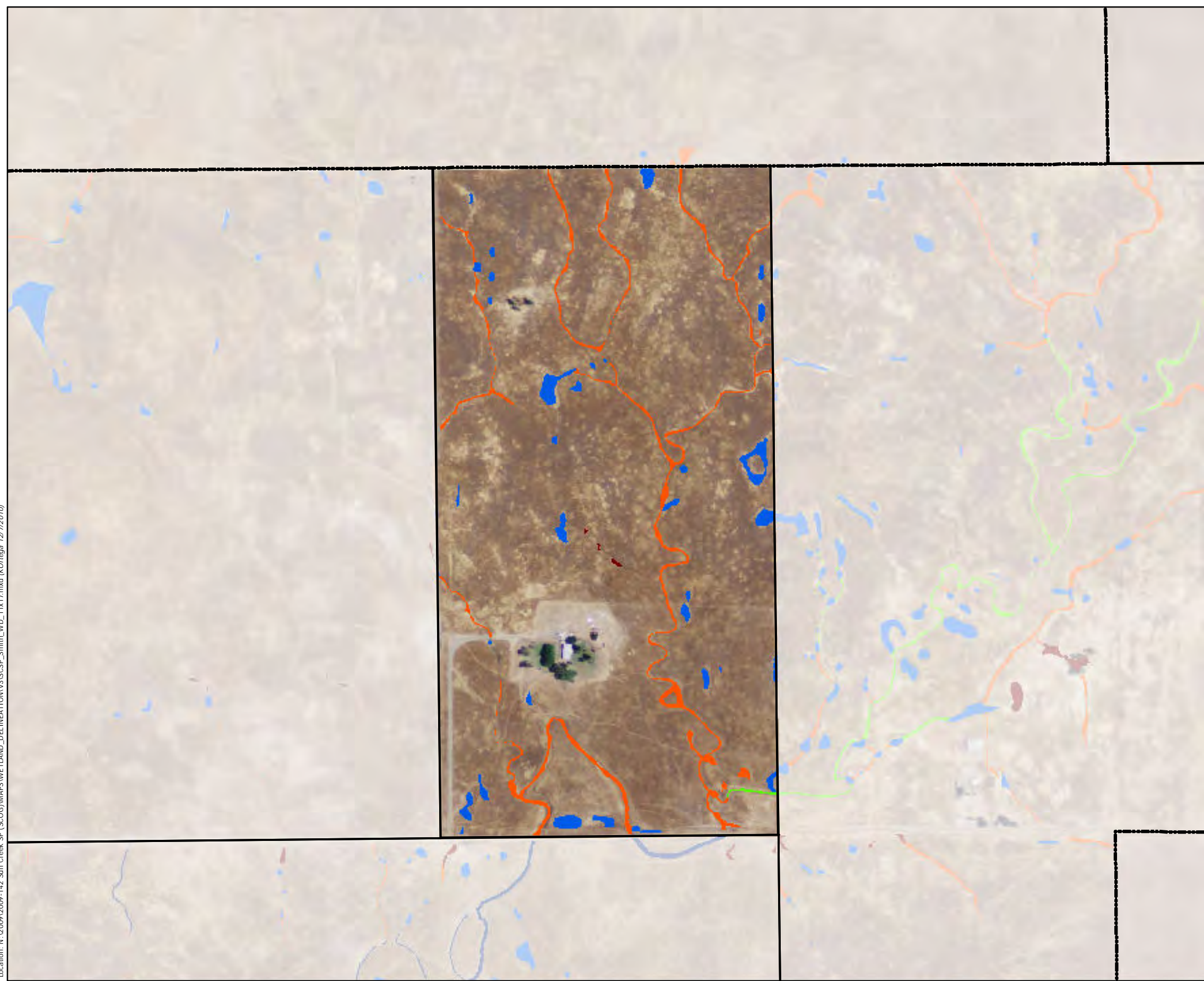
**ECORP Consulting, Inc.**  
ENVIRONMENTAL CONSULTANTS

Sacramento Region 2525 Warren Drive Rocklin, CA 95677 Ph: (916) 782-9100	Bay Area 2100 Embarcadero, Ste. 202 Oakland, CA 94606 Ph: (510) 434-0150	Orange County 1901 Park Court Place Bldg B, Ste. 1103 Santa Ana, CA 92701 Ph: (714) 648-0630	Inland Empire 2110 North 5th St Redlands, CA 92374 Ph: (909) 307-0046	San Diego Region 4709 Bonita Drive San Diego, CA 92124 Ph: (619) 521-0303
---	---	---	--	--



Figure 8 of 19



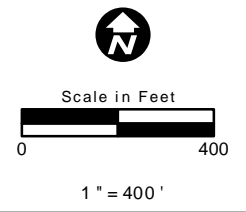
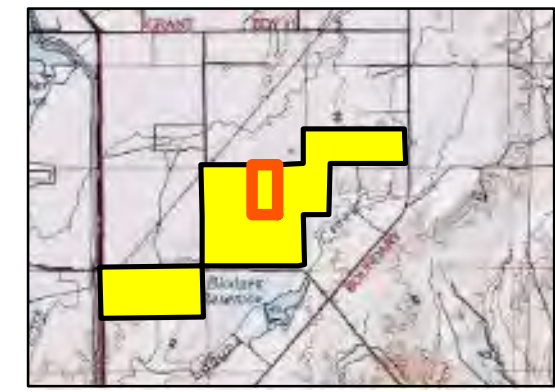
Location: N:\2009\2009-142 Sun Creek SP (SCOG)\MAPS\WETLAND\_DELINEATION\3\SCSP\_Smith\_WD\_11x17.mxd (KOrtega 12/7/2010)



### Figure 3. Wetland Delineation Smith Property

-  Project Boundary
-  Property Boundaries

	Existing Acreage
 Vernal Pool	1.350
 Seasonal Wetland	0.023
 Swale	2.181
 Ephemeral Drainage	0.000
 Intermittent Drainage	0.039
 Pond	0.000
 Stream	0.000
 Isolated Vernal Pool	0.000
<i>Total</i>	<i>3.593</i>

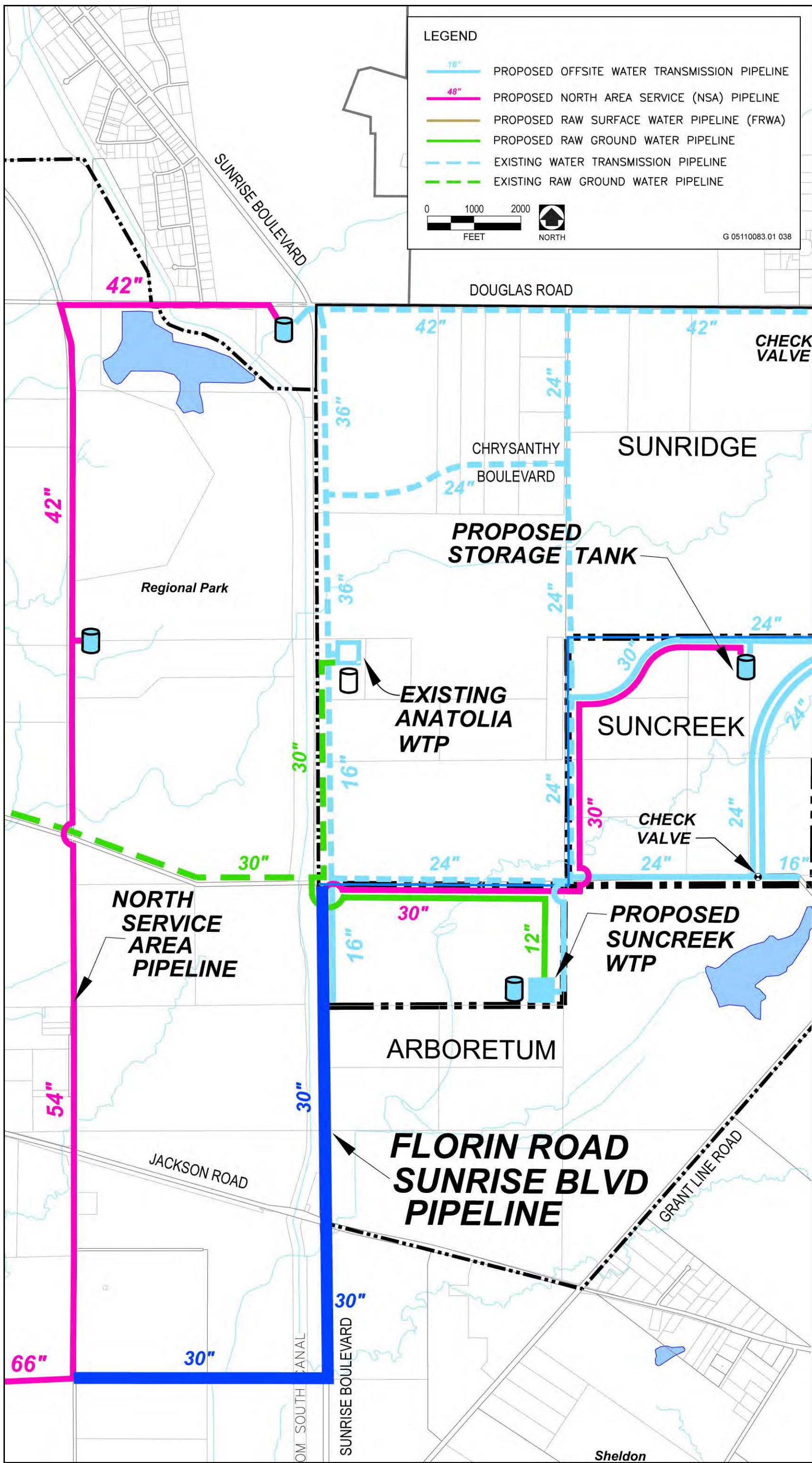




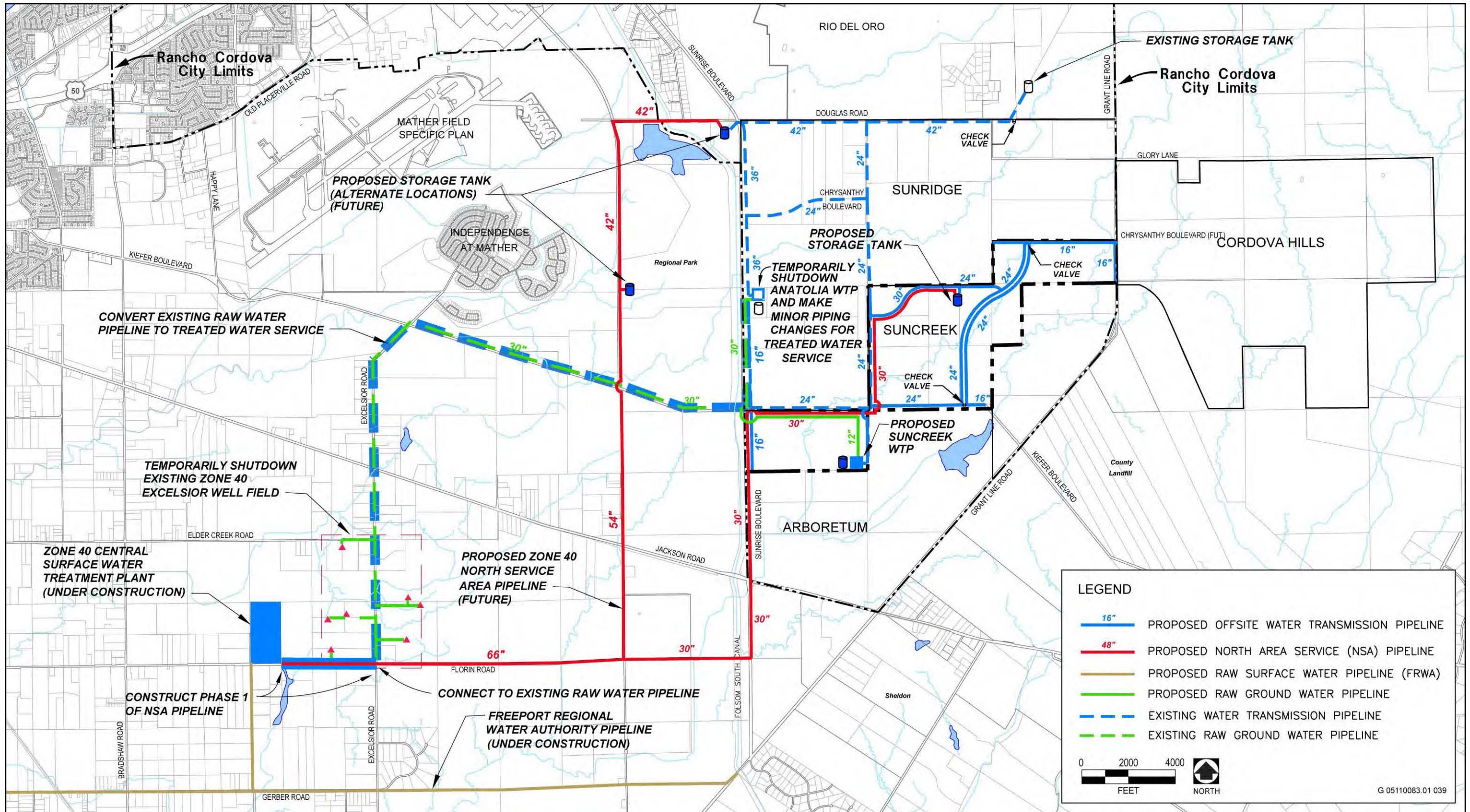
Proposed Off-Site Florin Road/Sunrise Boulevard Water Pipeline

Exhibit 2-11

Source: Mackay & Somps 2011b



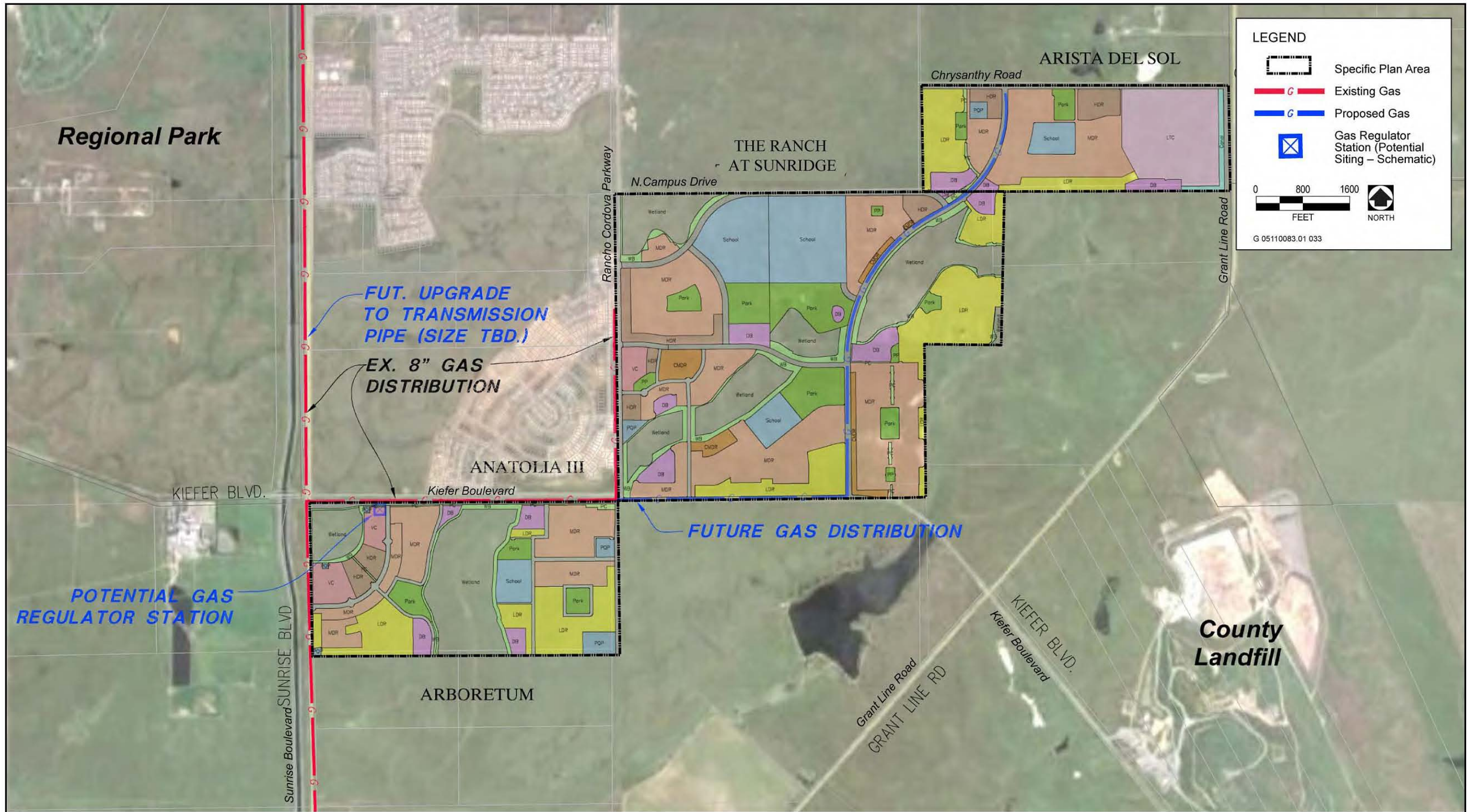
Source: Mackay & Somps 2011b



Source: MacKay & Soms 2011b

**Proposed Off-Site Anatolia Pipeline Conversion**

**Exhibit 2-13**



**LEGEND**

- Specific Plan Area
- G Existing Gas
- G Proposed Gas
- X Gas Regulator Station (Potential Siting – Schematic)

0 800 1600  
FEET

NORTH

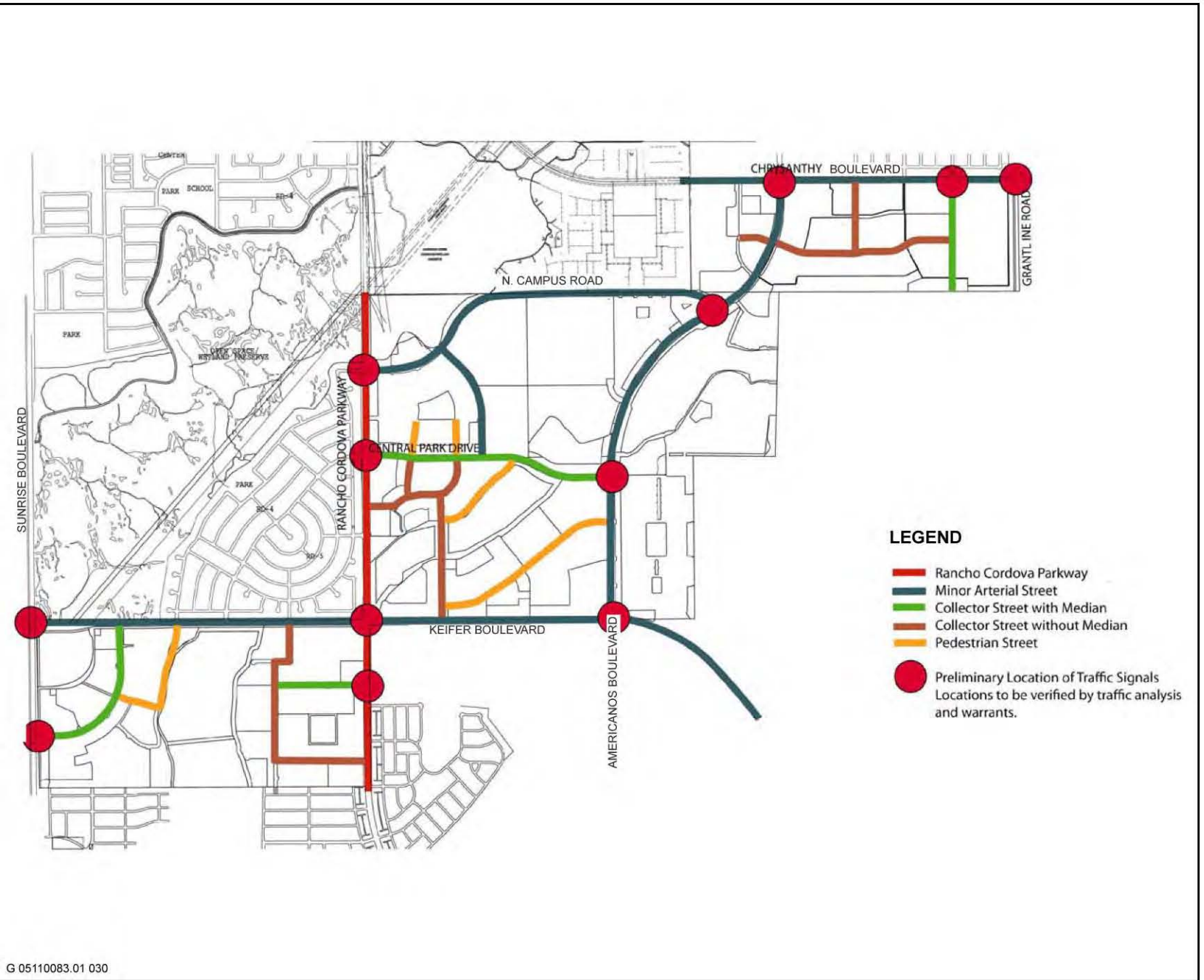
G 05110083.01 033

Source: MacKay & Soms 2012

**Proposed Natural Gas Facilities Plan**

**Exhibit 2-18**

**Figure 13 of 19**



Source: Wade Associates 2010

**Proposed Major Roadway Circulation Plan**

SunCreek Specific Plan Project DEIR/DEIS  
City of Rancho Cordova and USACE

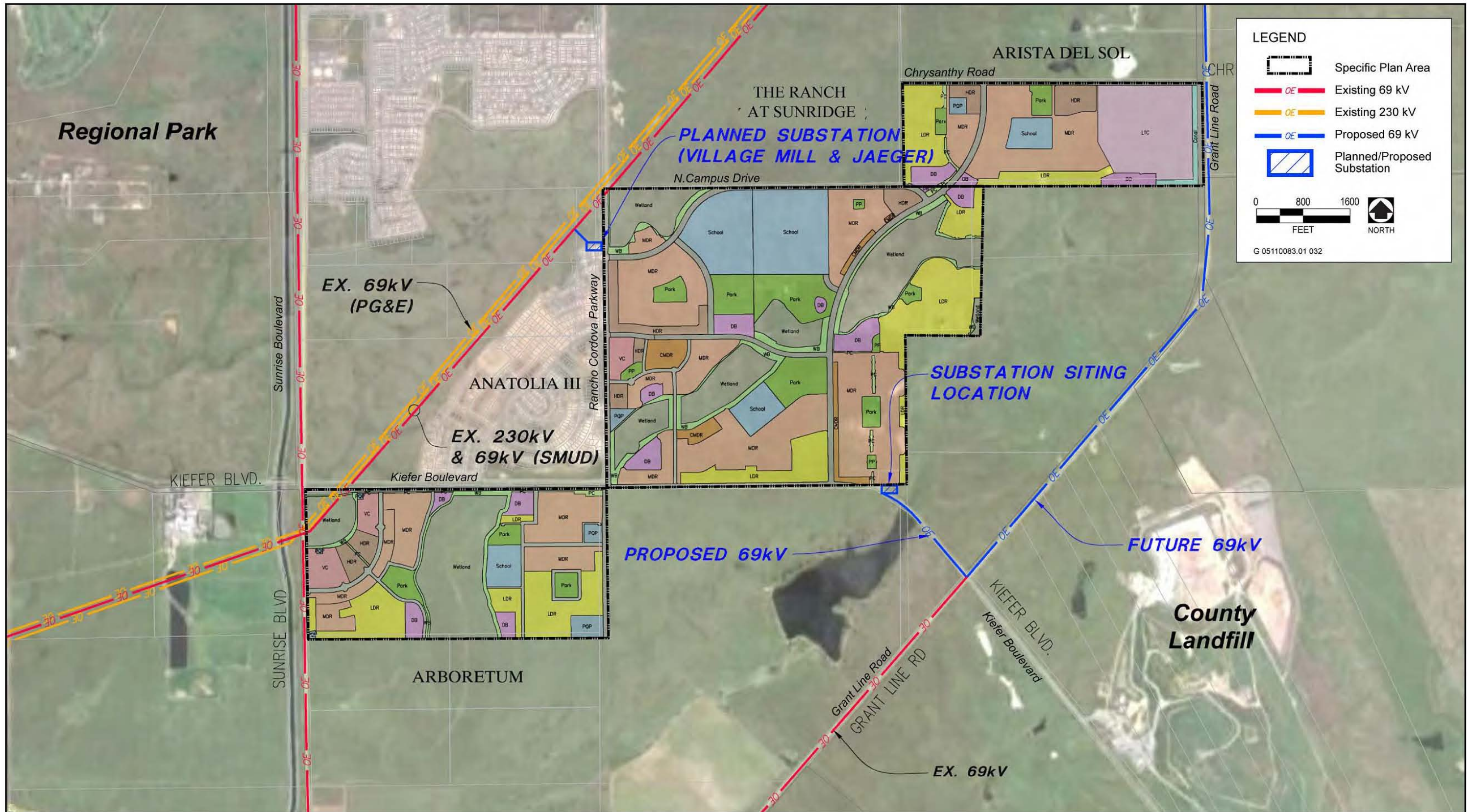
2-59

AECOM  
Alternatives

**Exhibit 2-20**

G 05110083.01 030

**Figure 14 of 19**

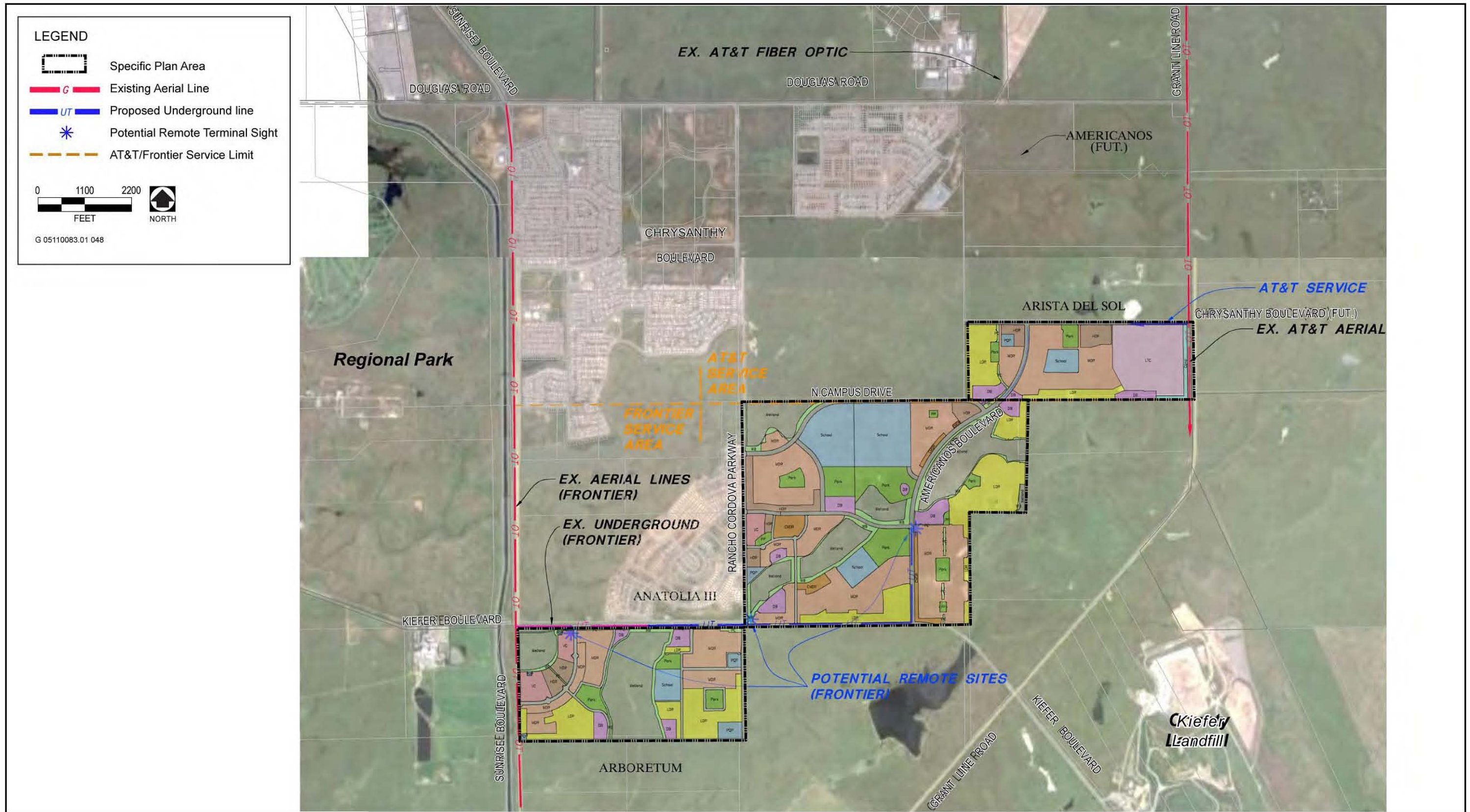


Source: MacKay & Soms 2012

**Proposed Electrical Facilities Plan**

**Exhibit 2-17**

**Figure 15 of 19**



Source: MacKay & Soms 2012





Source: Wade Associates 2010, Adapted by AECOM in 2010

**Proposed Bike Trail Master Plan**

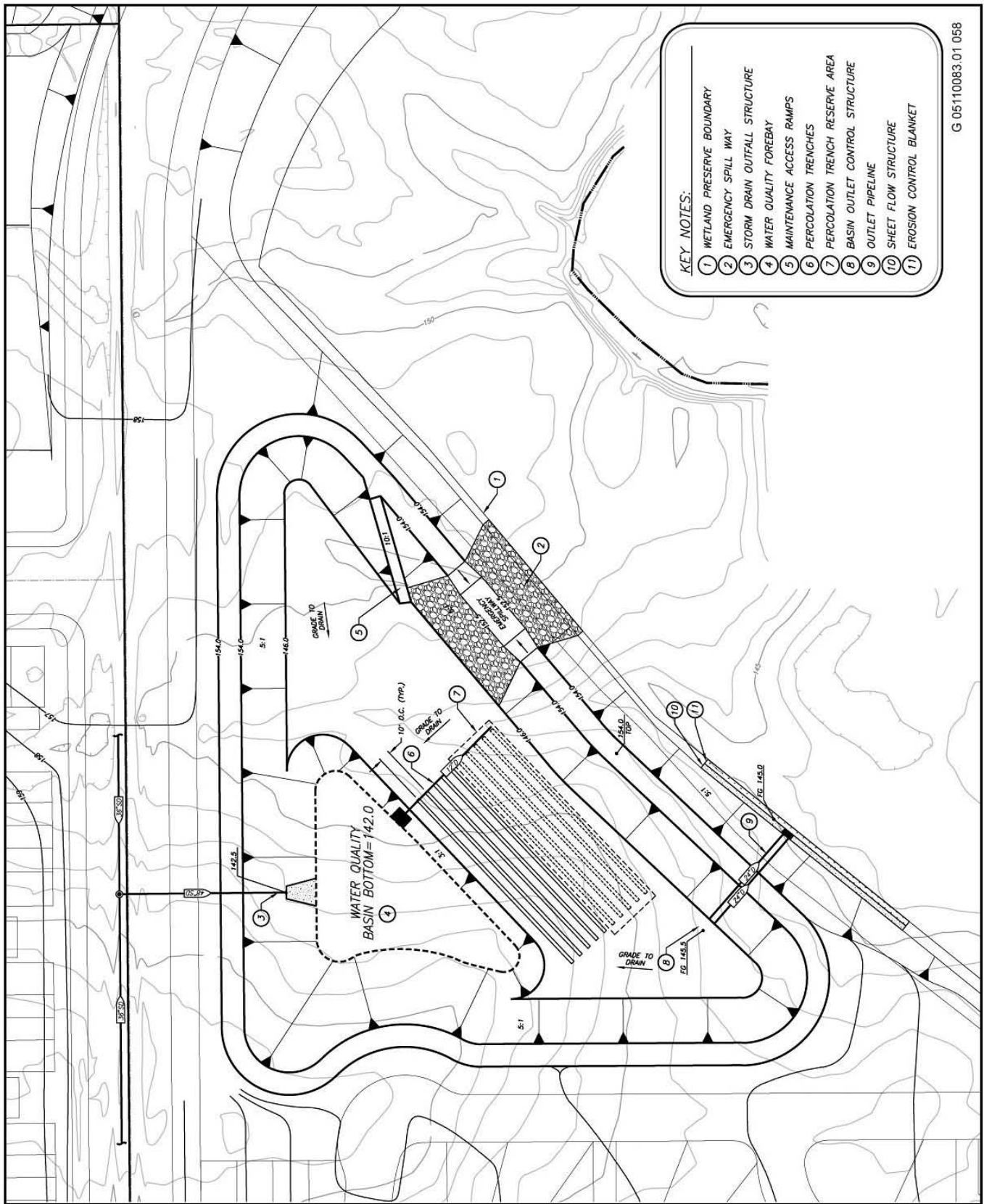
AECOM  
Alternatives

2-60

SunCreek Specific Plan Project DEIR/DEIS  
City of Rancho Cordova and USACE

**Exhibit 2-21**

**Figure 17 of 19**

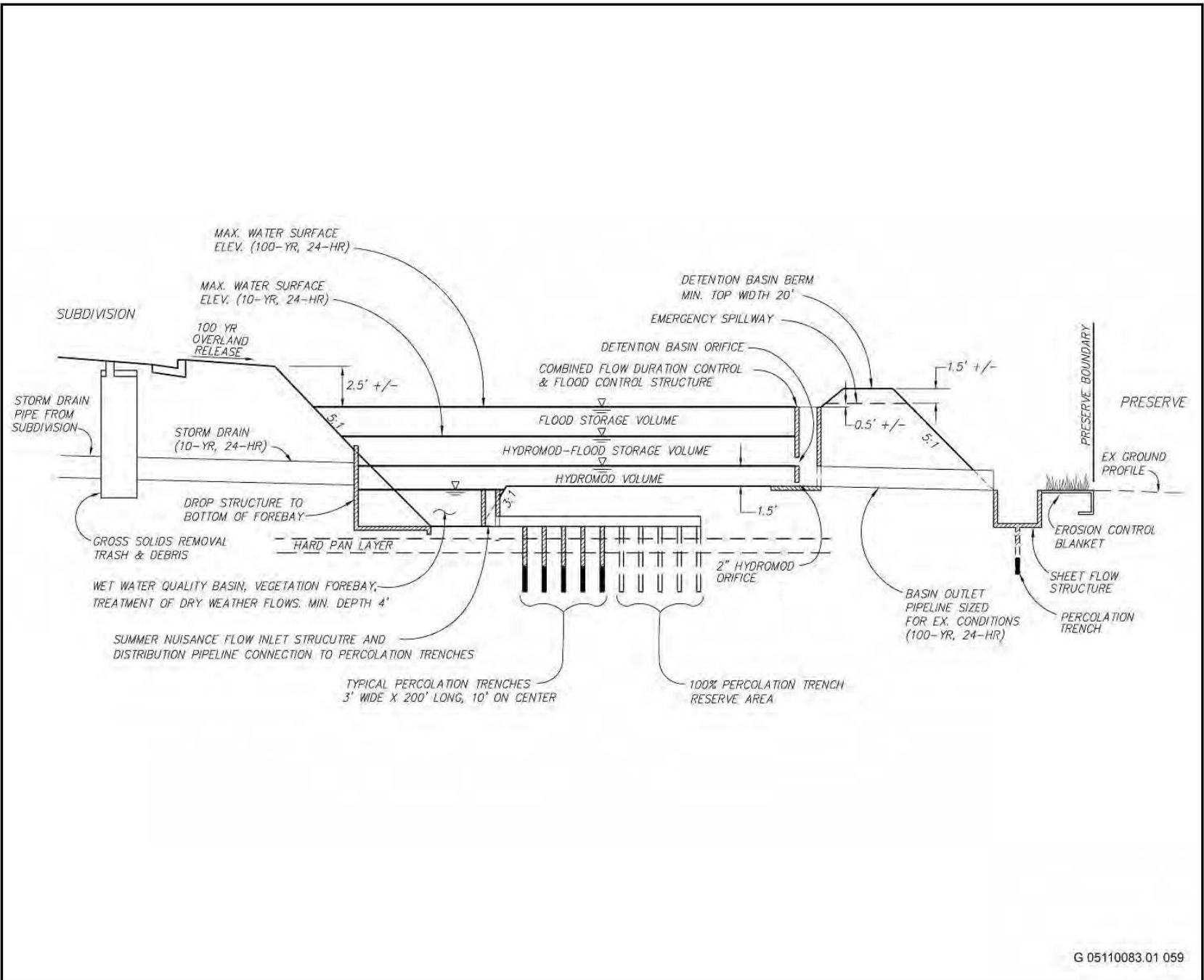


G 05110083.01 058

Source: MacKay & Somps 2011c

**Typical Hydromodification Detention Basin Plan**

**Exhibit 2-6**



Source: Mackay & Somps 2011c

Cross-Section Detail of Typical Hydromodification Detention Basin

Exhibit 2-7

AECOM  
Alternatives

2-22

SunCreek Specific Plan Project DEIR/DEIS  
City of Rancho Cordova and USACE

Figure 19 of 19