

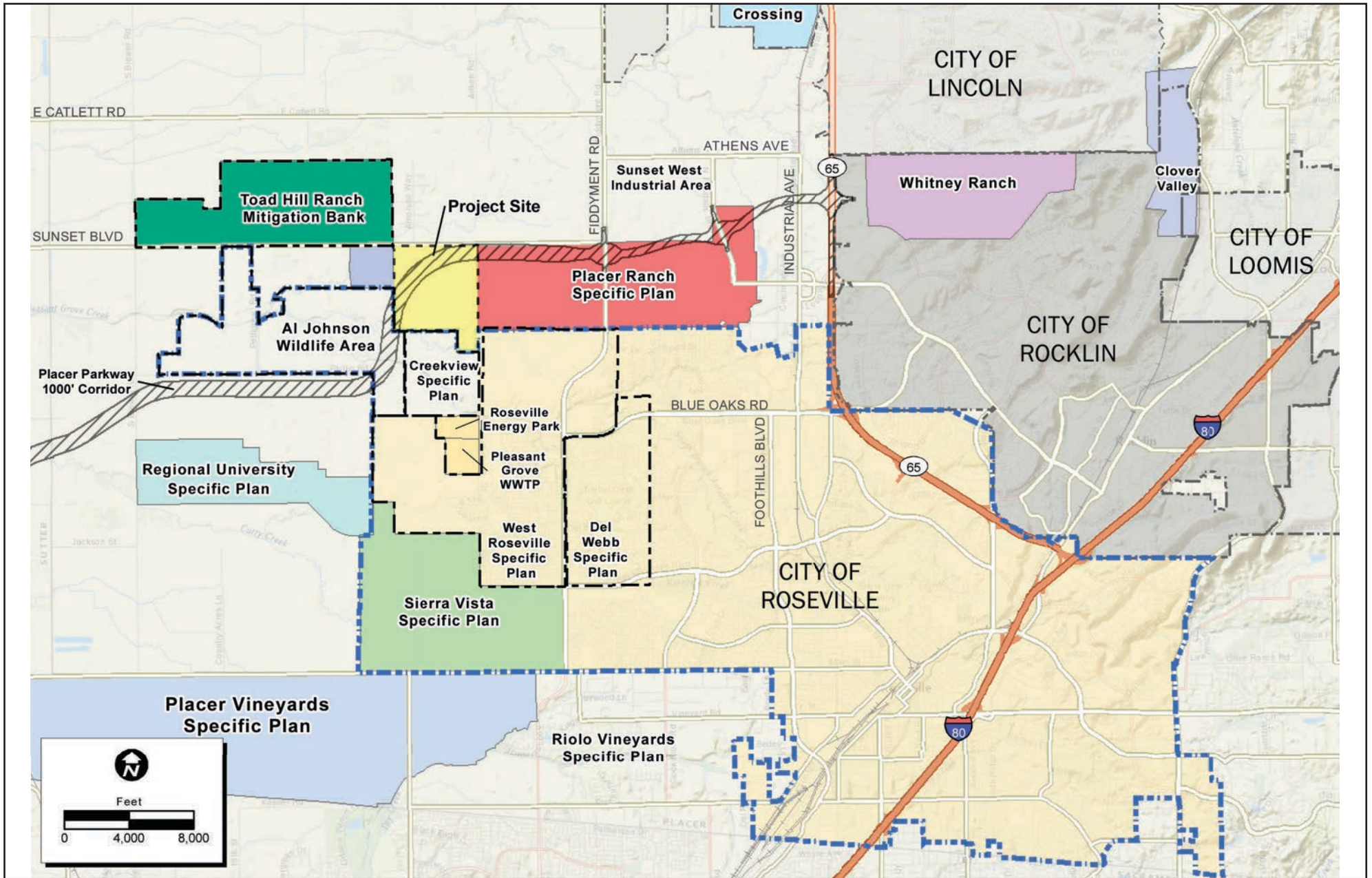


NOT TO SCALE

SOURCE: Google Maps – 2012

FIGURE 1.0-1

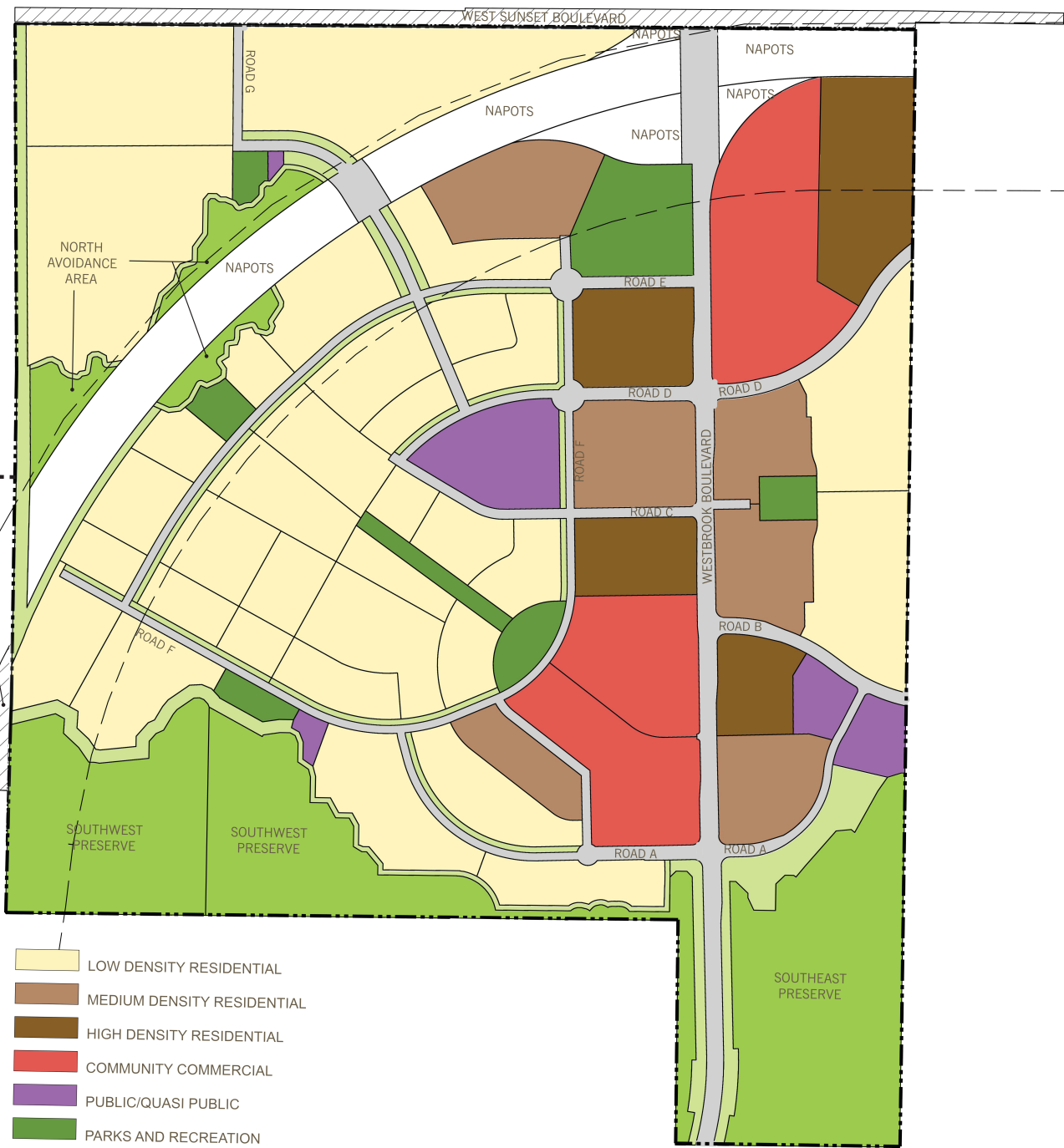
Regional Setting



SOURCE: EORP Consulting, Inc., 2018

FIGURE 1.0-2

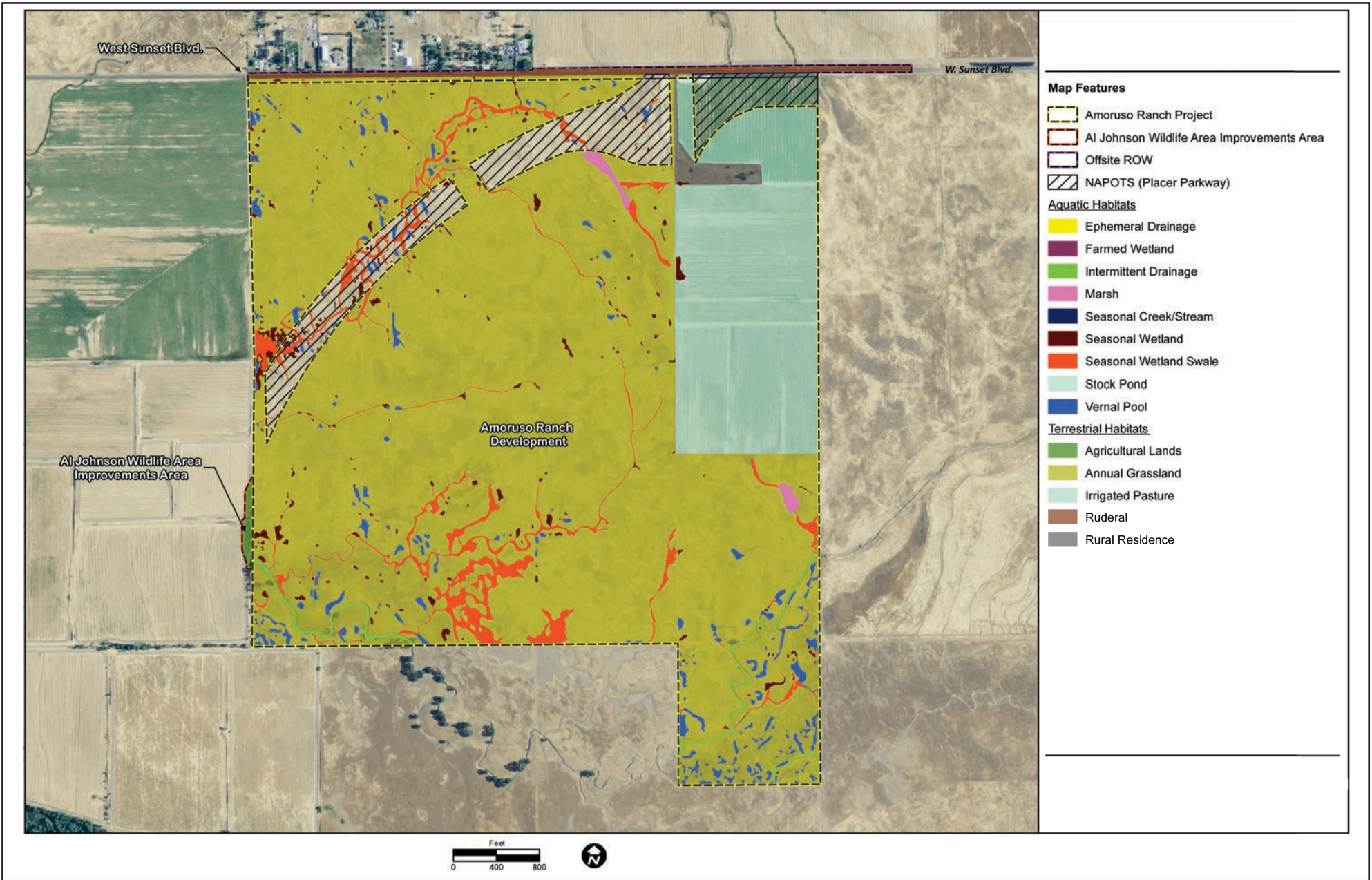
Project Location



SOURCE: Dahlin, 2017

FIGURE 2.0-1

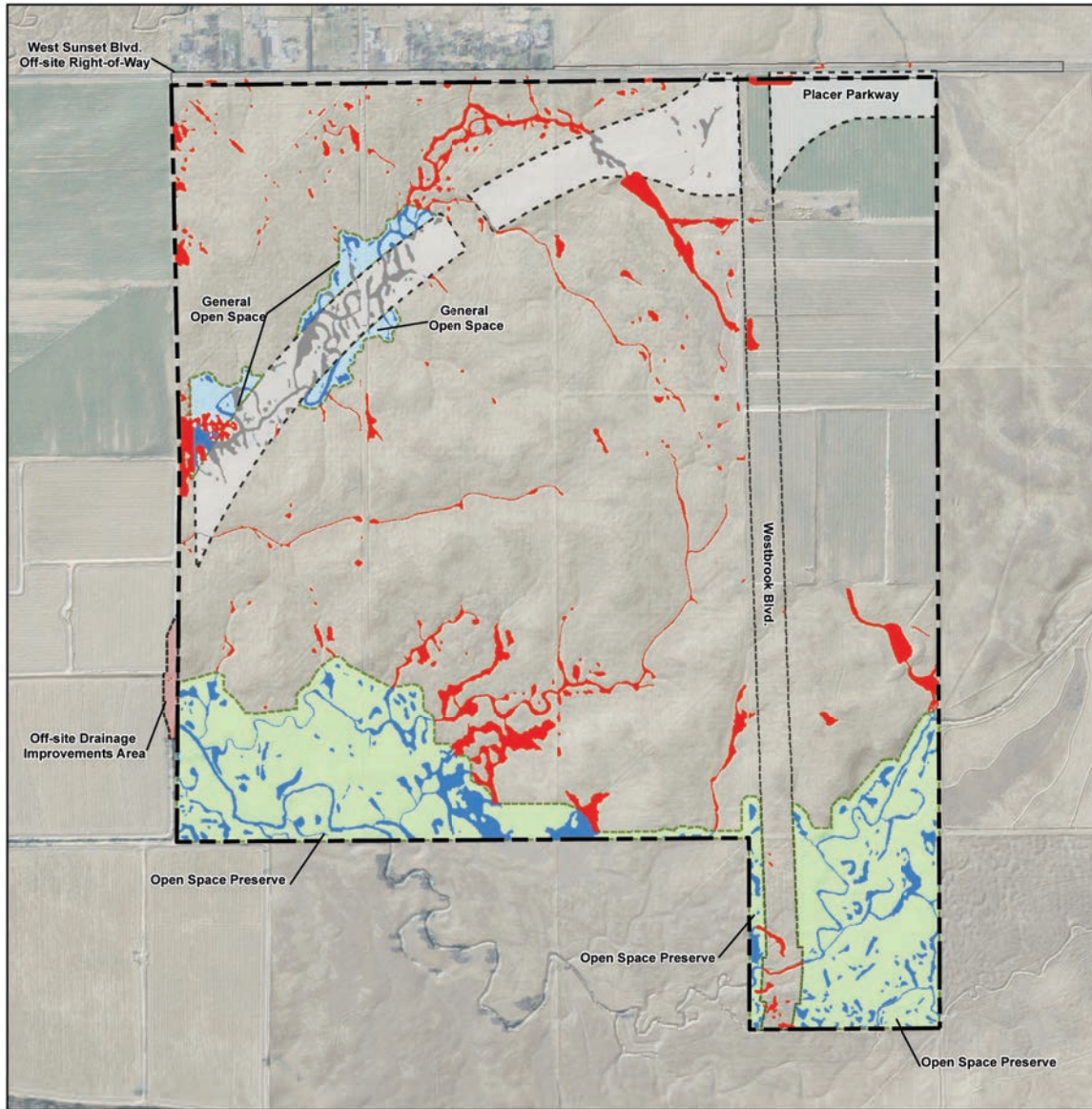
Proposed Action



SOURCE: ECORP Consulting, Inc.; NAIP, 2018

FIGURE 3.5-1

Project Site Biological Communities



Map Features

- Amoruso Ranch Property Boundary
- Amoruso Ranch Project General Open Space
- Amoruso Ranch Project Open Space Preserve
- Off-site Drainage Improvements Area
- West Sunset Blvd. Off-site Right-of-Way
- Placer Parkway - NAPOTS (5500' radii)

Aquatic Resources ^{1 *}

- Avoided
- Impact
- Placer Parkway

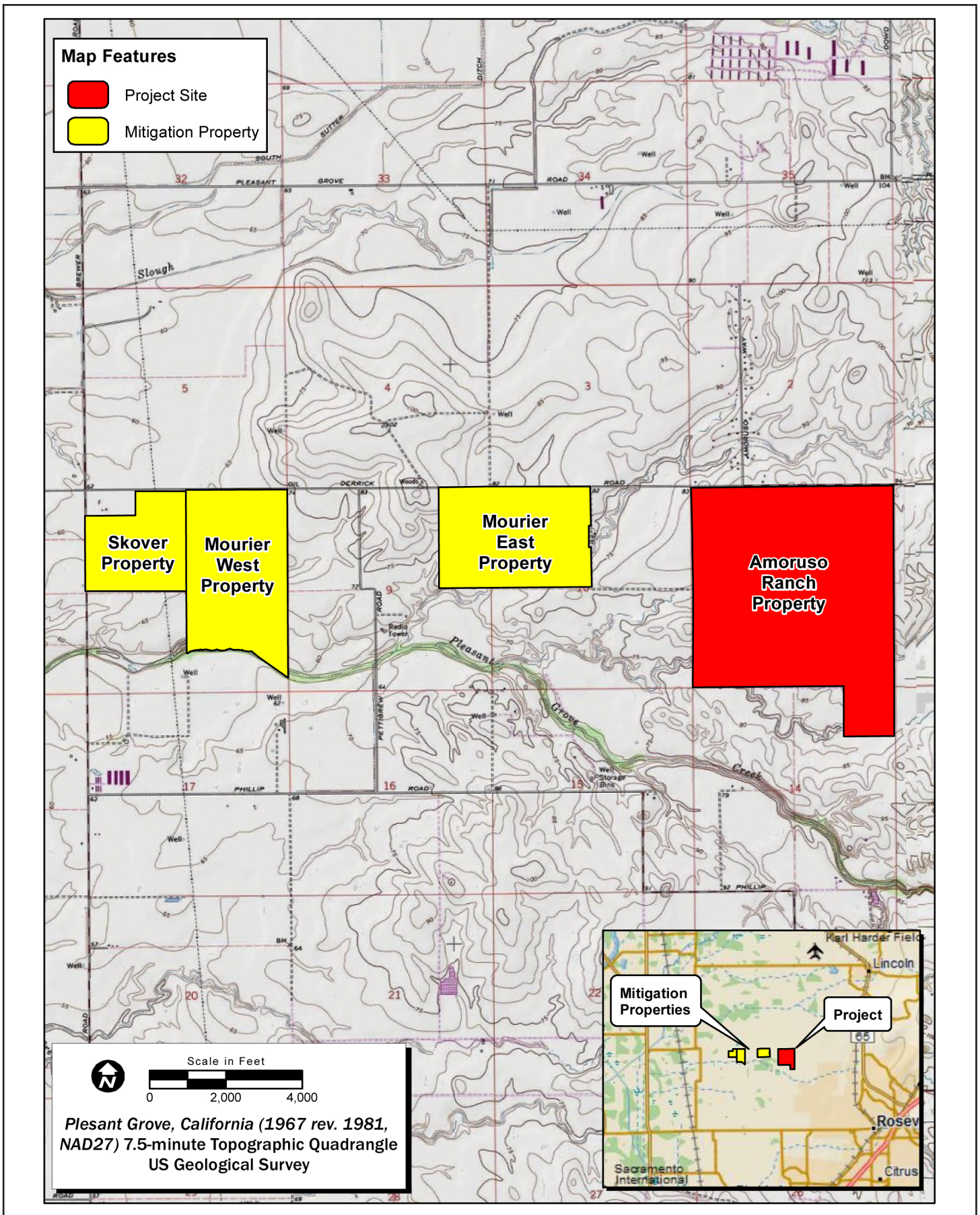
Aquatic Resources	Avoided/ Preserved	Impact	NAPOTS	Total (acres)
Ephemeral Drainage	<0.01	0.00	0.00	<0.01
Farmed Wetland	0.00	<0.01	0.00	<0.01
Intermittent Drainage	1.84	0.08	0.00	1.92
Marsh	0.00	1.82	0.00	1.82
Seasonal Creek/Stream	0.00	0.04	0.00	0.04
Seasonal Wetland	1.36	2.91	0.56	4.83
Seasonal Wetland Swale	6.33	10.48	2.96	19.77
Stock Pond	0.00	0.36	0.00	0.36
Vernal Pool	5.76	3.01	1.04	9.82
TOTAL	15.29	18.70	4.56	38.56

¹ Subject to U.S. Army Corps of Engineers verification. This exhibit depicts information and data produced in accord with the wetland delineation methods described in the 1982 Corps of Engineers Wetland Delineation Manual and the Regional Supplement to the Corps of Engineers Wetland Delineation Manual, Arid West Region, Version 2.0 as well as the updated Map and Drawing Standards for the South Pacific Division Regulatory Program as amended on February 10, 2016, and conforms to Sacramento District specifications. However, feature boundaries have not been legally surveyed and may be subject to minor adjustments if more accurate locations are required.
^{*} The acreage value for each feature has been rounded to the nearest 1/100 decimal. Summation of these values may not equal the total potential Waters of the U.S. acreage reported.



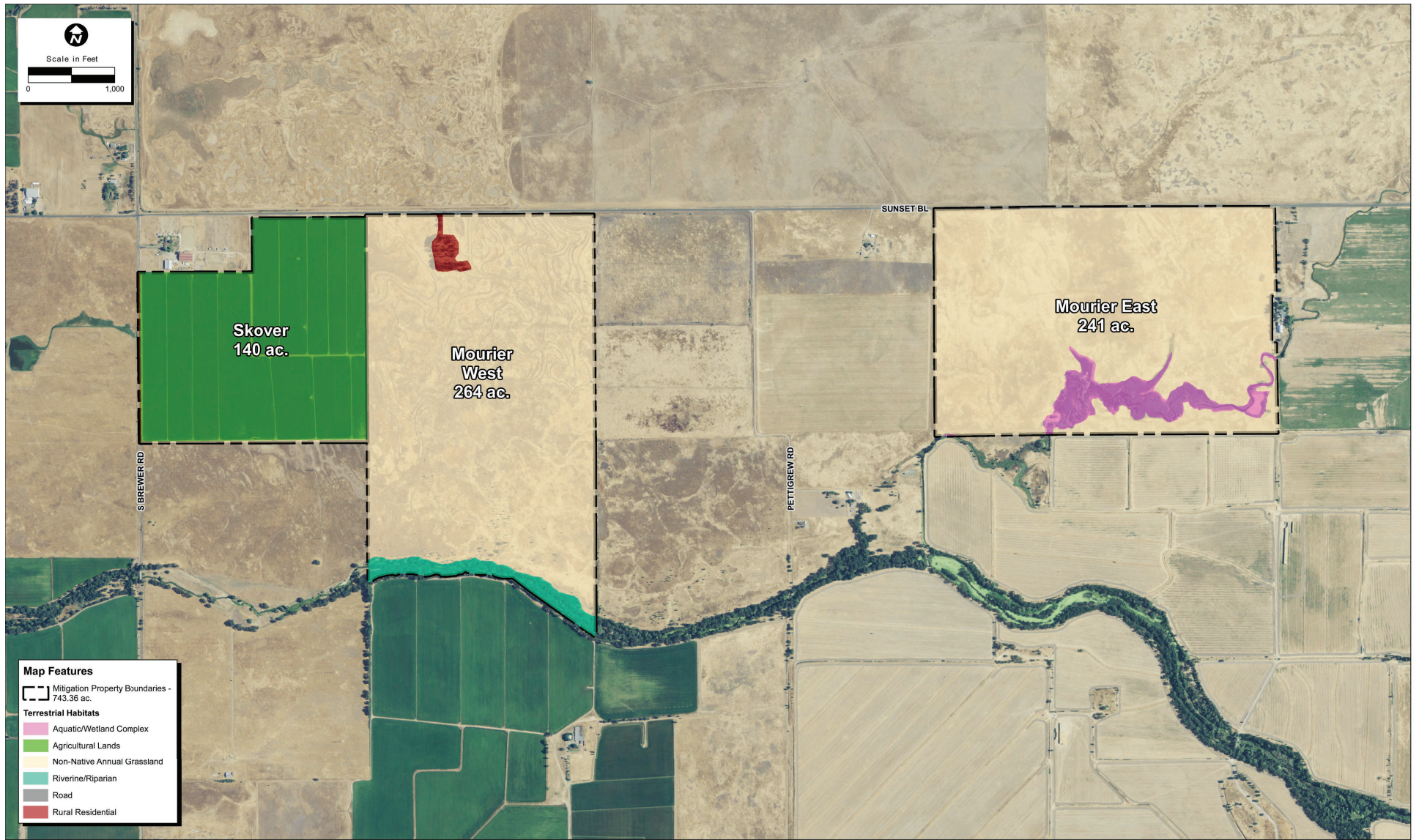
SOURCE: ECORP Consulting, Inc., 2018

FIGURE 3.4-1



SOURCE: ECorp Consulting, 2018

FIGURE 2.0-4



SOURCE: ECORP Consulting, Inc., NAIP, 2018

FIGURE 3.4-2