

Appendix G
**Utility Assessment for
Basin-Wide Problem Identification Report**

PREVIOUS EXISTING UTILITIES AND ENCROACHMENT DOCUMENTS

Southport EIP TO3

October 25, 2011

Reviewed by: Richard Dirks

Prepared by: Sean McNeil

1.0 Introduction

The following utility and encroachments information is based on the *Civil Design Considerations* appendix in the *Southport Sacramento River EIP Interim Preliminary Design* dated September 2011. After this report was completed there has been more research on the docking facility encroachments and this new information is provided in Section 2 below. This Technical Memorandum will be revised as new docking facilities/utility and encroachment information is gathered. Modifications to the tables will be tracked in the footer as new information is discovered.

2.0 Existing Utilities and Encroachments

An inventory of existing utilities and permitted encroachments that may require modification or relocation was compiled in the *Interim Preliminary Planning Report* (dated January 28, 2011) from a variety of data sources. Data sources included field inspection reports, research conducted by Kjeldsen, Sinnock, and Neudeck, Inc., as part of the levee evaluation survey work which was adopted into the *Draft Problem Identification Report* (dated April 2008), and review of Central Valley Flood Protection Board encroachment permits.

The inventory of permitted or observed utilities and permitted encroachments has been reduced to include only those that may impact the project. If a utility is in close proximity to the project footprint, it was considered to potentially impact the project. The potentially impacted utilities and permitted encroachments are noted in **Table 1 – Existing Utilities and Encroachments** and shown in **Exhibit 1 – Existing Utilities and Encroachments Map**. The location designators are Levee Mile (LM) indicators and Project Station (PS). The utilities are shown on Exhibit 1 as overhead, underground or miscellaneous encroachments. The utility modifications associated with each Combined Measure Alternative (CMA) are noted in the table. A modification means the utility or encroachment will either be abandoned or relocated. The following paragraphs provide additional information on the more significant utilities and encroachments.

An irrigation pump station (**LM 3.35, PS 236+81**) near Linden Road will need to be relocated for all alternatives. It is located on the Southwest corner of Linden Road and South River Road (SRR) on the landside of the levee. It has an 80-hp pump and a 30-inch intake pipe under the existing levee. The intake is at approximate elevation 16.0 in the Sacramento River. It discharges into a distribution box located nearby which controls flow to the North, West and South through gated pipelines.

A cellular communications tower (**LM 3.35, PS 236+81**) located immediately adjacent to the pump station will also have to be relocated for all alternatives.

A 120" sanitary sewer trunk main (**See Exhibit 1, PS 0+00 through 60+00**) is located approximately 950' west of SRR from station 0+00 to 50+00. This facility will be impacted by the setback levee alternative (CMA 2) and will require manhole adjustments to grade where the proposed new road crosses the existing sewer trunk main alignment. The other alternatives will not be impacted by this sewer trunk main.

An 8" Chevron Fuel line (**Table 1, PS - 0+00 through 60+00**) is located approximately 25' west of SRR from station 0+00 to 50+00. This facility will be impacted by all alternatives and will require relocation outside of the construction footprint.

The main overhead line along the existing SRR and the impacted portions of Linden and Davis Roads are assumed to be relocated for all alternatives. The associated services that will remain may need to be relocated as well. Note that this is not shown on the table or exhibit.

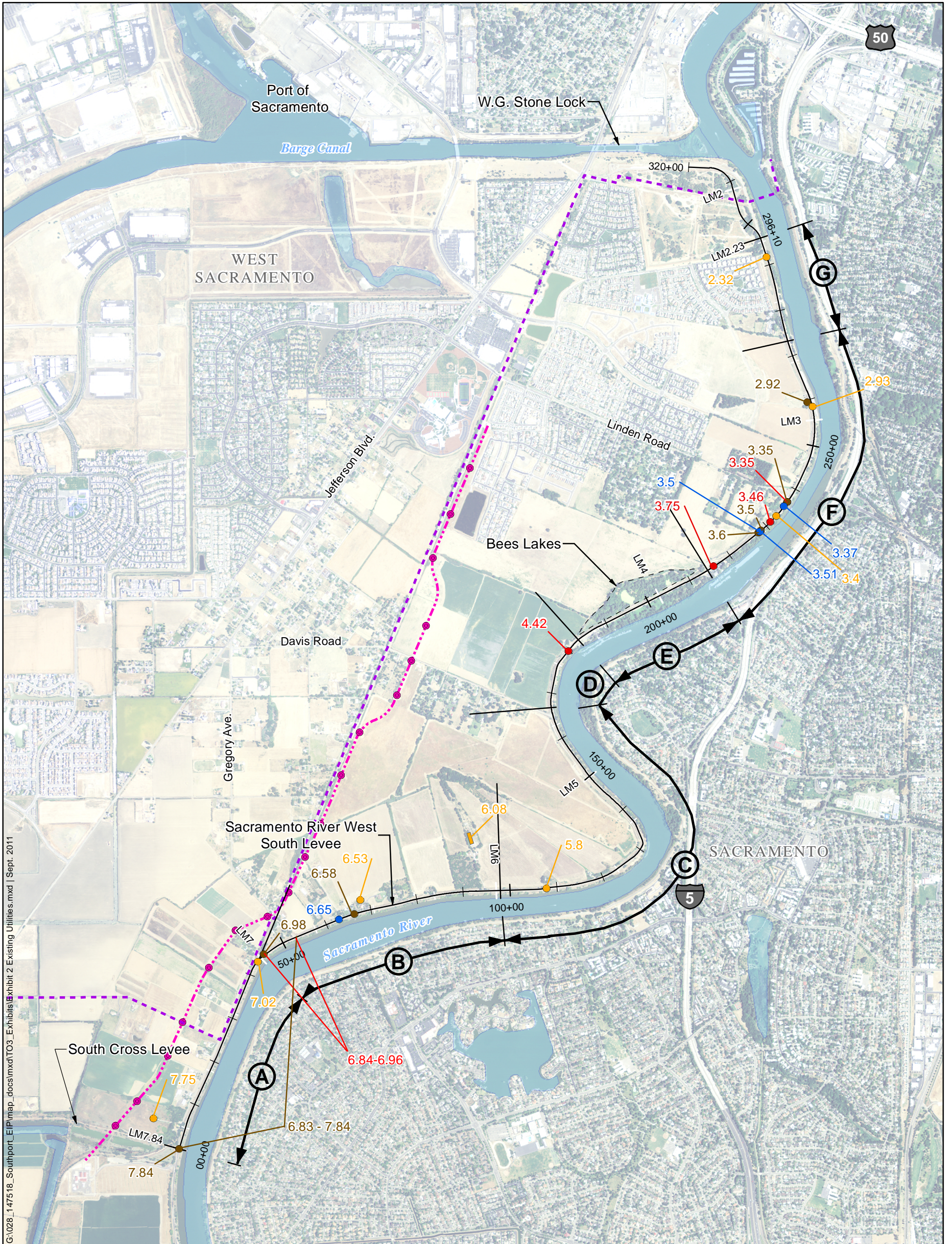
The abandoned septic tanks and water wells associated with the structures to be purchased are also not shown in the table or exhibit.

Table 1-Existing Utilities and Encroachments

| Levee Mile | Project Station | Permit No. | Permittee | Contact Information | Encroachment | Utility Status During and Post Construction | | |
|-------------------|-----------------|-------------|------------------|---|--|---|--|--|
| | | | | | | CMA 1 | CMA 2 | CMA 3 |
| 2.23 – 7.84, 3.46 | 180+00, 231+30 | 13969, 8535 | PG&E | 5555 Florin - Perkins Road P.O. Box 7444 Sacramento, CA 1-877-743-7782 | 12 kV pole lines located along levee. | Provide new electrical service to relocated power line. | Provide new electrical service to relocated power line. | Provide new electrical service to relocated power line. |
| 2.32 | 293+00 | N/A | - | - | 12" Metal Pipe (concrete filled) | - | Will be removed due to construction activities. | - |
| 2.93 | 258+50 | N/A | - | - | 12" Metal Pipe (concrete filled) | - | Will be removed due to construction activities. | - |
| 3.35 | 236+81 | N/A | - | Reclamation District 900 | RD 900 Irrigation Pump Station and supporting infrastructure. | Facility requires relocation. | Facility requires relocation. | Facility requires relocation. |
| 3.35 | 236+81 | - | - | - | Cellular Facility (Tower and Buildings). | Must relocate and remain active. | Must relocate and remain active. | Must relocate and remain active. |
| 3.37 | 236+80 | No Permit | - | - | Private Property - Boat | - | Facility will be removed due to construction activities. | - |
| 3.4 | 239+00 | N/A | - | - | Proposed relocation of pumphouse and Cellular Facility | -- | Will require temporary power and electrical drop from utility corridor. | -- |
| 3.5 | 228+50 | 13014 | Clyde W. Perkins | Reclamation District 900 | Construct a 4' X 100' boat dock anchored to driven piling in the Sacramento River near the right bank. Also to construct a walkway and ramp on the waterside of the levee and place electric and water lines through levee at walkway. | No action required. | Electric and Water lines will be removed due to construction activities. | Electric and Water lines will be removed due to construction activities. |
| 3.5 | 228+50 | 13014 | Clyde W. Perkins | Reclamation District 900 | Construct a 4' X 100' boat dock anchored to driven piling in the Sacramento River near the right bank. Also to construct a walkway and ramp on the waterside of the levee and place electric and water lines through levee at walkway. | No action required. | Facility will be removed due to construction activities. | Facility will be removed due to construction activities. |
| 3.51 | 228+60 | No Permit | (Abandon) | - | Abandoned boat dock. | - | Facility will be removed due to construction activities. | - |

| Levee Mile | Project Station | Permit No. | Permittee | Contact Information | Encroachment | Utility Status During and Post Construction | | |
|--------------------------------|--------------------------------------|-------------|--|--|---|--|---|--|
| | | | | | | CMA 1 | CMA 2 | CMA 3 |
| 3.6 | 227+78 | 15332 | Sacramento Yacht Club | Reclamation District 900 c/o The Reclamation Board 1416 - 9th Street, Sacramento, CA | To landscape and install an irrigation system on the waterward slope of the right bank levee of the Sacramento River. | No action required. | Facility will be removed due to construction activities. | Facility will be removed due to construction activities. |
| 3.75 | 215+90 | 3409A | George M. Vashloz | 808 Garnet West Sacramento, CA | Installation of an overhead crossing for power lines to Driftwood Boat Harbor Club House on right bank of the Sacramento River. | Provide new electrical service to relocated power line. | Provide new electrical service to relocated power line. | Provide new electrical service to relocated power line. |
| 5.8 | 108+00 | N/A | - | - | 8" Metal Pipe and shut off valve | - | Will be removed due to construction activities. | - |
| 6.08 | 95 | N/A | - | - | Communication Towers and supporting bldgs. | Will require temporary power and supporting bldgs to be relocated. | Will require temporary power and supporting bldgs to be relocated. | Will require temporary power and supporting bldgs to be relocated. |
| 6.53 | 65+00 | N/A | - | - | Private Property | -- | Will require temporary power and electrical drop from utility corridor. | -- |
| 6.65 | 63+00 | 15509 | Bert Culbreth and Terry C. Annesley | Reclamation District 900 | Stairs on levee slope, Gangway, Floating Dock and 3 piles. | No action required. | Facility will be removed due to construction activities. | Facility will be removed due to construction activities. |
| 6.84 - 6.96, 2.92, 6.83 - 7.84 | 52+75 - 46+35, 259+60, 53+30 - 00+00 | 4276 | AT&T, Pacific Bell | AT&T California | Various ATT poles and underground infrastructure along levee. | Powerline and underground infrastructure to be relocated. | Powerline and underground infrastructure to be relocated. | Powerline and underground infrastructure to be relocated. |
| 6.98 | 46+20 | - | - | - | Pipe in ground. | No action required. | Facility will be removed due to construction activities. | Facility will be removed due to construction activities. |
| 7.02 | 44+20 | N/A | - | - | Abandon Electric Meter. | Facility will be removed due to construction activities. | Facility will be removed due to construction activities. | Facility will be removed due to construction activities. |
| 7.75 | 5+00 | N/A | - | - | Radio Station | -- | Will require temporary power and electrical drop from utility corridor. | - |
| 7.84 | 00+00 | 17734 | Sacramento Regional County Sanitation District | 10060 Goethe Road, Sacramento, CA 95827 916-875-7000 | To temporarily install (approximately 2 years) two 10-inch diameter restrained joint plastic pipes encased in 12 in diameter steel pipes through the crown of the right bank levee for dewatering purposes. | - | - | - |
| See Exhibit 1 | 0+00 - 60+00 | N/A | - | Sacramento County Sanitation District | 120" Sacramento County Sewer Trunk Main. | - | Facility will be protected in place. | - |
| See Exhibit 1 | 0+00 - 60+00 | N/A | - | Chevron | 8" Fuel Pipeline. | Requires relocation. | Requires relocation. | Requires relocation. |
| 2.23 - 7.84, 3.46 | 180+00, 231+30 | 13969, 8535 | PG&E | 5555 Florin - Perkins Road P.O. Box 7444 Sacramento, CA 1-877-743-7782 | 12 KV pole lines located along levee. | Provide new electrical service to relocated power line. | Provide new electrical service to relocated power line. | Provide new electrical service to relocated power line. |

Note: None



G:\028_147518_Southport_EIP\map_docs\mxd\TO3_ExistingUtilities\Exhibit 2 Existing Utilities.mxd | Sept. 2011

WSAFCA
West Sacramento Area Flood Control Agency

Levee Improvement Program Southport Early Implementation Project

Project Manager
M. VECCHIO, HDR

Designed
D. MUI, HDR

Checked
S. MCNEIL, HDR

Drawn
A. ARNOLD, HDR

ENCROACHMENT POINT IDENTIFIED BY LEVEE MILE

- OVERHEAD UTILITIES
- DOCKING FACILITIES
- UNDERGROUND UTILITIES
- MISCELLANEOUS ENCROACHMENTS

● SEWER MANHOLE

--- 120" SANITARY SEWER MAIN

--- 8" CHEVRON FUEL PIPELINE

← A → COST EVALUATION SEGMENT

PROJECT STATIONING
LM2 LEVEE MILES (DWR, 1990)

Existing Utilities and Encroachments Map

Exhibit 1

Project Num: 166505

October 2011

N
W — E
S

0 1,000 2,000 3,000 4,000
Feet

1 inch = 2,000 feet

This page intentionally left blank.