

3.13.1 INTRODUCTION

This section describes the existing public services that serve the project site and its vicinity and potential effects to these services from the implementation of the Proposed Action or alternatives. The public services addressed in this section include law enforcement, fire protection, schools, and libraries. Regulations and policies affecting the public services in the project area are also described.

Sources of information used in this analysis include:

- Placer Vineyards Specific Plan EIR prepared by Placer County
- Placer County General Plan

3.13.2 AFFECTED ENVIRONMENT

3.13.2.1 Proposed Action and Alternatives

Law Enforcement Services

The Placer County Sheriff's Department provides general law enforcement services to the project site. The Sheriff's substation located nearest the project site is the South Placer Substation in Loomis at the intersection of Horseshoe Bar Road and Interstate 80, approximately 12 miles (19.3 kilometers) from the project site. The substation serves western Placer County south of Newcastle. There are currently 50 sworn officers assigned to this substation, as well as numerous volunteers and administrative staff (Placer County 2010).

Fire Protection Services

Fire protection services for the project site are provided by the California Department of Forestry and Fire Protection (CDF) through a contract with the Placer County Office of Emergency Services and by the Sacramento Metropolitan Fire District (SMFD). CDF provides fire protection for 83 percent of the Specific Plan area, and the remaining area on the west side of the Specific Plan area (Riego area) is served by SMFD. Placer County has mutual aid agreements with the Pleasant Grove Fire Protection District and the Roseville Fire Department, and is under an interim mutual aid agreement with the Sacramento Metropolitan Fire District (Placer County 2006).

The Dry Creek fire station serves most of the project site, and is located at 8350 Cook Riolo Road, approximately 3 miles (4.8 kilometers) east of the eastern boundary of the project site. Response times from this station vary from seven to 8 minutes. The Dry Creek fire station has two CDF contracted firefighters on duty on a 24-hour basis and 20 on-call volunteers (Placer County 2006). CDF provides structural and wildland fire protection, dispatch services, fire inspections, first response emergency medical services, disaster response, all hazards response, inspections and development review.

SMFD has four existing fire stations (Stations 116, 117, 25 and 26) that would provide services to the portion of the project site within its jurisdiction and to the remainder on a mutual aid basis. These fire stations are located in Sacramento County as shown in **Figure 3.13-1, Fire Station Locations**.



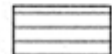


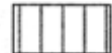

Schools

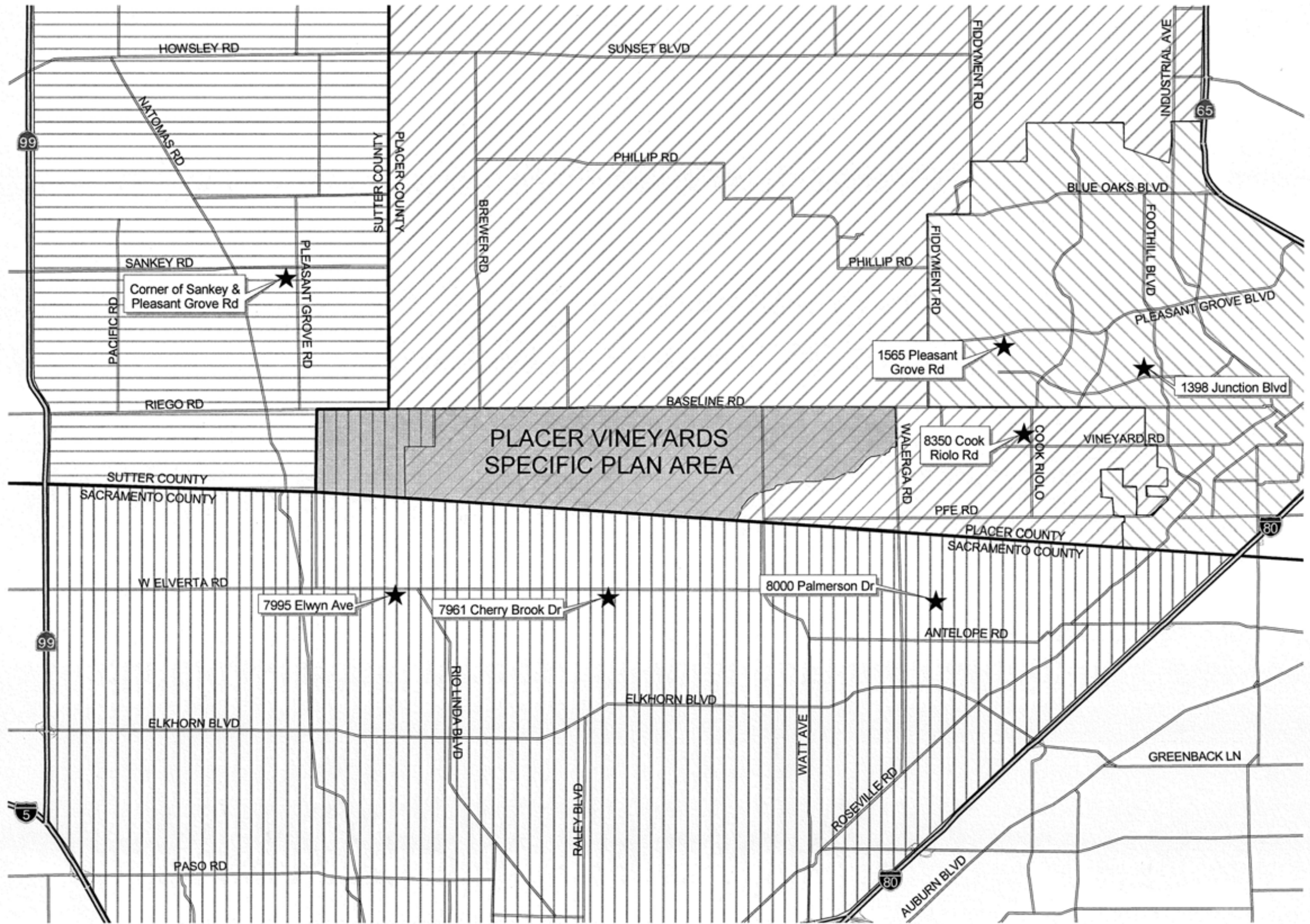
The eastern three-quarters of the project site fall within the boundary of the Center Joint Unified School District (CJUSD). The Elverta Joint Elementary School District (EJESD) and Grant Joint Union High School District (GJUHSD) have a common boundary that encompasses the western quarter of the project site. The boundaries of these school districts are shown in **Figure 3.13-2, School District Boundaries**. The CJUSD provides elementary, intermediate, and high school facilities that serve portions of Placer County, including the project site. CJUSD is a relatively small school district, located at the northern edge of Sacramento County, and southern edge of Placer County. The district is composed of two high schools (Center High School and McClellan High School), one middle School (Wilson Riles Middle School), four elementary schools (North Country Elementary, Oak Hill Elementary, Spinelli Elementary, and Dudley Elementary), and two charter schools (Antelope View and Global Youth). The EJESD is located west of the CJUSD and has two schools: Elverta Joint Elementary School and Alpha Technology Middle School. The GJUHSD has 15 middle, high, and alternative schools (Placer County 2006).

Libraries

Library services for the project site are provided by the Auburn-Placer County Library District. This system of libraries serves all of Placer County, with the exception of the Cities of Roseville and Lincoln, which own and operate their own municipal library systems. The Auburn-Placer County Library District operates a main branch in the City of Auburn, a law library, nine branch libraries, and a bookmobile that serves many areas throughout rural Placer County. The nearest branch library to the project site is located in the City of Rocklin at 5460 5th Street, approximately 8 miles (12.9 kilometers) to the northeast. The City of Roseville operates a library at 1501 Pleasant Grove Boulevard, approximately 4 miles (6.4 kilometers) to the northeast.

LEGEND

-  County Lines
-  Placer Vineyards Specific Plan Area
-  Pleasant Grove Fire Department Service Area
-  Placer County (CDF) Service Area
-  City of Roseville Fire Department Service Area
-  Sacramento Metropolitan Fire District Service Area
-  Existing Fire Stations

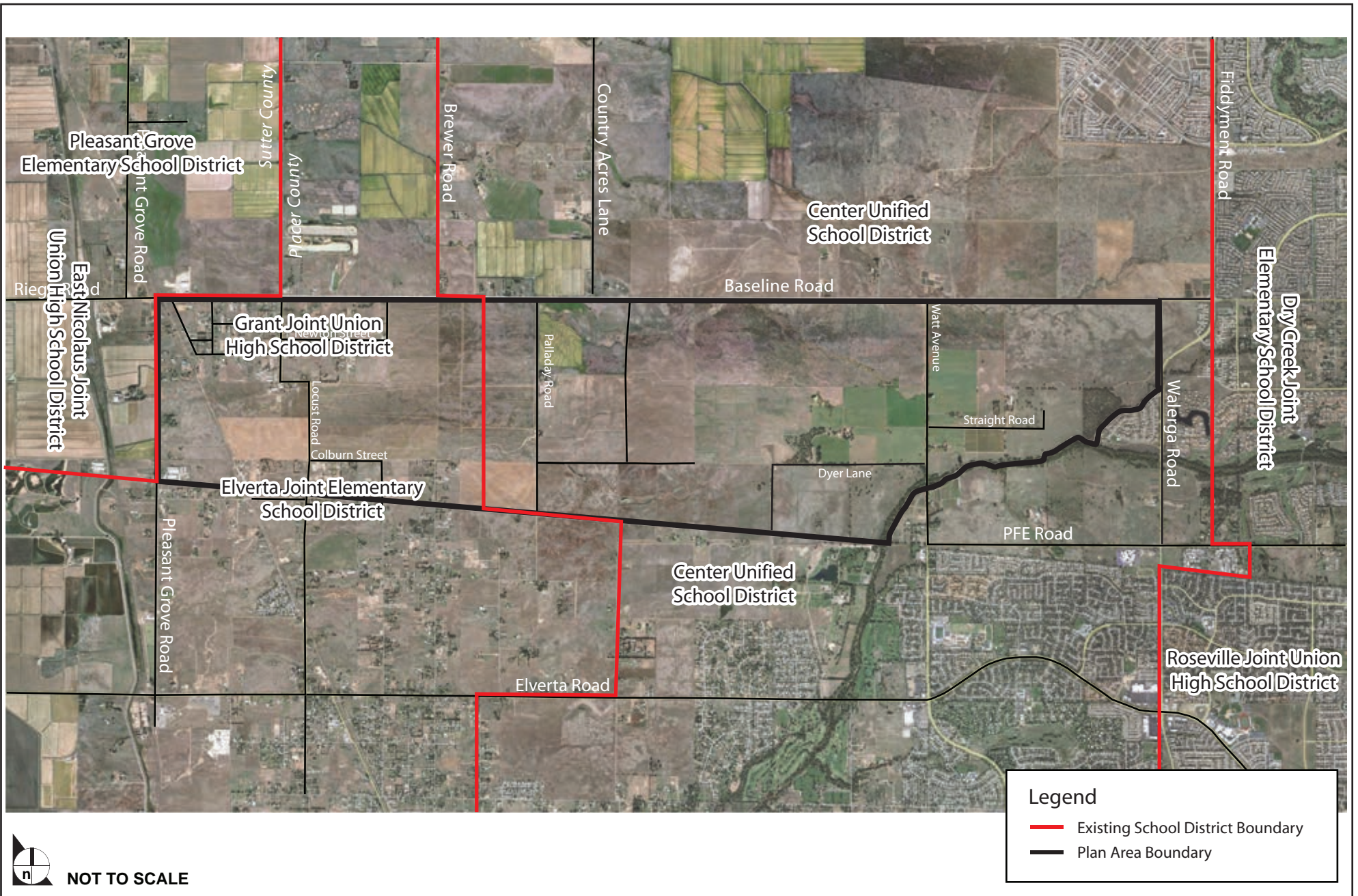


 NOT TO SCALE

SOURCE: Quad Knopf - 2002

FIGURE 3.13-1

Fire Station Locations



SOURCE: Quad Knopf – February 2005

FIGURE 3.13-2

School District Boundaries

3.13.3 REGULATORY FRAMEWORK – APPLICABLE LAWS, REGULATIONS, PLANS, AND POLICIES

3.13.3.1 Federal Laws and Regulations

There are no federal regulations pertaining to the provision of law enforcement services, fire protection services, schools, or libraries.

3.13.3.2 State Laws and Regulations

Senate Bill 50

The Leroy F. Greene School Facilities Act of 1998, or Senate Bill 50 (SB 50) (Government Code Section 65995), restricts the ability of a local agency to deny project approvals on the basis that public school facilities (classrooms, auditoriums, etc.) are inadequate. School impact fees are collected at the time building permits are issued. These fees are used by the local schools to accommodate the new students added by the project, thereby reducing potential impacts on schools. Payment of school fees is required by SB 50 for all new residential development projects and is considered full and complete mitigation of school impacts under state law.

The law does identify certain circumstances under which the statutory fee can be exceeded. These include preparation and adoption of a “needs analysis,” eligibility for state funding, and other provisions. Assuming a district can meet the test for exceeding the statutory fee, the law establishes ultimate fee caps of 50 percent of costs where the state makes a 50 percent match, or 100 percent of costs where the state match is unavailable. All fees are levied at the time the building permit is issued. District certification of payment of the applicable fee is required before the City or County can issue a building permit.

3.13.3.3 Local Plans and Policies

Placer County General Plan

The following goals and policies from the Placer County General Plan are applicable to the Proposed Action.

**Table 3.13-1
Relevant Placer County General Plan Goals and Policies**

Goals	Policies
Law Enforcement Service	
<p>4.H: To provide adequate sheriff's services to deter crime and to meet the growing demand for services associated with increasing population and commercial/industrial development in the county.</p>	<p>1: Within the County's overall budgetary constraints, the County shall strive to maintain the following staffing ratios (expressed as the ratio of officers to population):</p> <ul style="list-style-type: none"> a. 1: 1,000 for unincorporated areas b. 1: 7 for jail population c. 1: 16,000 total county population for court and civil officers <p>2: The County Sheriff shall strive to maintain the following average response times for emergency calls for service:</p> <ul style="list-style-type: none"> a. 6 minutes in urban areas b. 8 minutes in suburban areas c. 15 minutes in rural areas d. 20 minutes in remote rural areas <p>3: Within the County's overall budgetary constraints, the County shall provide sheriff facilities (including substation space, patrol, and other vehicles, necessary equipment, and support personnel) sufficient to maintain the above service standards.</p> <p>4: The County shall require new development to develop or fund sheriff facilities that, at a minimum, maintain the above standards.</p> <p>5: The County shall consider public safety issues in all aspects of commercial and residential project design, including crime prevention through environmental design.</p>
Fire Protection Service	
<p>4.1: To protect residents of and visitors to Placer County from injury and loss of life and to protect property and watershed resources from fires.</p>	<p>1: The County shall encourage local fire protection agencies in Placer County to maintain the following minimum fire protection standards (expressed as Insurance Service Organization (ISO) ratings):</p> <ul style="list-style-type: none"> a. ISO 4 in urban areas b. ISO 6 in suburban areas c. ISO 8 in rural areas <p>2: The County shall encourage local fire protection agencies in the county to maintain the following standards (expressed as average response times to emergency calls):</p> <ul style="list-style-type: none"> a. 4 minutes in urban areas b. 6 minutes in suburban areas c. 10 minutes in rural areas <p>3: The County shall require new development to develop or fund fire protection facilities, personnel, and operations and maintenance that, at a minimum maintains the above service level standards.</p> <p>9: The County shall ensure that all proposed developments are reviewed for compliance with fire safety standards by responsible local fire agencies per the Uniform Fire Code and other County and local ordinances.</p> <p>11: The County shall encourage local fire protection agencies to provide and maintain advanced levels of emergency medical services (EMS) to the public.</p>

Goals	Policies
Schools	
<p>4.J: To provide for the educational needs of Placer County residents.</p>	<p>5: The County should plan and approve residential uses in those areas that are most accessible to school sites in order to enhance neighborhoods, minimize transportation requirements and costs, and minimize safety problems.</p> <p>6: The County should include schools among those public facilities and services that are considered an essential part of the infrastructure that should be in place as development occurs.</p> <p>7: The County shall consider school district plans in establishing acceptable levels of service for schools, determining school location and land and facility needs, and determining appropriate financing methods. The County should designate existing and future school sites in community plans and specific plans to accommodate school district needs.</p> <p>8: The County shall encourage school facility siting that establishes schools as focal points within the neighborhood and community.</p> <p>9: The County shall encourage the location of schools in areas with safe pedestrian and bicycle access.</p> <p>10: The provision of adequate school facilities is a community priority. The County and school districts will work closely to secure adequate funding for new school facilities and, where legally feasible, the County shall provide a mechanism which, along with state and local sources, requires development projects to satisfy an individual school district's financing program based upon their impact.</p> <p>11: The County and residential developers should coordinate with the school districts to ensure that needed school facilities are available for use in a timely manner. The County, to the extent possible, shall require that new school facilities are constructed and operating prior to the occupation of the residences which the schools are intended to serve.</p> <p>13: Before a residential development, which includes a proposed general plan amendment, rezoning or other legislative review can be approved by the Planning Commission or Board of Supervisors, it shall be demonstrated to the satisfaction of the hearing body that adequate school facilities shall be provided when the need is generated by the proposed development.</p> <p>14: Whenever possible, the County shall support and participate with school districts in joint development of recreation areas, turf areas, and multi-purpose buildings.</p> <p>5: The County and the school districts should work together in using existing school facilities for non-school-related and child care activities.</p> <p>16: The County should encourage use of schools as community centers to provide a range of services.</p>
Library System	
<p>4.A: To ensure the timely development of public facilities and the maintenance of specified service levels for these facilities.</p>	<p>5: The County shall ensure that library facilities are provided to current and future residents in the unincorporated area. The County shall also require new development to fund its fair share of library facilities.</p>

Auburn-Placer County Library Long-Range Plan

The Auburn-Placer County Library Long-Range Plan, adopted in 2002, projects facilities needed to serve the existing and future population of Placer County. The Long-Range Plan identifies current facility standard as 0.40 square feet (0.04 square meter) of library space and 2.2 volumes of library materials per capita.

3.13.4 SIGNIFICANCE THRESHOLDS AND ANALYSIS METHODOLOGY

3.13.4.1 Significance Thresholds

Council on Environmental Quality (CEQ) guidance requires an evaluation of a proposed action's effect on the human environment. The U.S. Army Corps of Engineers USACE has determined that the Proposed Action or its alternatives would result in substantial adverse effects related to public services if, in order to maintain acceptable service ratios, response times or other performance objectives for any of the public services, the Proposed Action or an alternative would result in the need for new or physically altered facilities, the construction of which could cause significant environmental impacts.

3.13.4.2 Analysis Methodology

Public services-related impacts were evaluated by estimating the number of additional public service personnel and new facilities that would be needed to serve the population added to the project site under the Proposed Action or an alternative.

3.13.5 ENVIRONMENTAL CONSEQUENCES AND MITIGATION MEASURES

Impact PUB-1 Demand for Law Enforcement Services

No Action Alt. The increased residential population resulting from implementation of the No Action Alternative would create additional demand for law enforcement services, which would be a **significant** effect. With mitigation, the effect on law enforcement services would be **less than significant**.

Based on the desired service ratio, at buildout, the No Action Alternative's approximately 24,000 new residents would require approximately 24 to 30 new sworn and non-sworn officers and additional administrative staff to serve the project. The USACE assumes that as the project site is progressively built out under the No Action Alternative, the County would assess the need for additional law enforcement officers and add them as necessary.

With respect to the Proposed Action, the County has indicated that a substation approximately 19,000 square feet (1,765.2 square meters) in size would be required house the additional staff and serve the project site. It is anticipated that a similar substation would be needed to serve the mixed-use residential community under the No Action Alternative and would be located within the project site. Analysis of impacts related to construction within the project site is included in each of the topical areas contained in

this EIS. No additional environmental impacts related to construction of the substation have been identified.

The effect from the demand for law enforcement services would be **significant** for the No Action Alternative. **PVSP EIR Mitigation Measures PUB-1 4.11.3-1, and 4.11.3-2a and 4.11.3-2b** would address the effect. The USACE assumes that Placer County would impose the same mitigation measures on the No Action Alternative to address this effect. These mitigation measures require a special benefit assessment district or other funding mechanism to ensure adequate funding for the ongoing maintenance and operation of law enforcement services. In addition, land shall be set aside for a substation and a Development Agreement for facilities, staffing and vehicles shall be arranged with Placer County. The Placer Vineyards Specific Plan EIR finds that these mitigation measures would fully mitigate the effect from the demand for law enforcement services to less than significant. The USACE also finds that the mitigation measures described above would fully mitigate the effect of the No Action Alternative, and this effect would be **less than significant** after mitigation.

**Proposed
Action (Base
Plan and
Blueprint
Scenarios),
Alts. 1
through 5**

The Proposed Action (Base Plan and Blueprint Scenarios) and all of the on-site alternatives would construct a large-scale, mixed-use residential community on the project site. Depending on the density of development, Proposed Action's 30,000 to 50,000 new residents would require between 42 to 80 new sworn and non-sworn officers and additional administrative staff to serve the project (Placer County, 2007). As the total residential population on the site under Alternatives 1 through 5 would generally be similar to the total population under the Proposed Action, a similar number of additional police officers and other staff would be needed to serve the development under these alternatives. As the site is progressively built out, the County would assess the need for additional law enforcement officers and add them as necessary. As with the No Action Alternative, a new Sheriff's substation would be required in order to adequately serve the populations associated with the Proposed Action and Alternatives 1 through 5. The PVSP provides a site for a new Sheriff's substation that would be co-located with other County administrative offices within the Town Center south of Baseline Road and east of 16th Street. Analysis of impacts related to construction within the project site is included in each of the topical areas contained in this EIS. No additional environmental impacts related to construction of the substation have been identified.

The effect from the demand for law enforcement services would be **significant** for the Proposed Action and the alternatives. **PVSP EIR Mitigation Measures PUB-1 4.11.3-1, and 4.11.3-2a and 4.11.3-2b** would address this effect. These mitigation measures were adopted by Placer County at the time of project approval and will be enforced by the County on the Proposed Action Base Plan. The USACE assumes that Placer County would impose the same mitigation measures on the Proposed Action Blueprint scenario and Alternatives 1 through 5 (individually or combined) to address this effect. These mitigation measures would fully mitigate the effect to **less than significant**.

PVSP EIR Mitigation Measure 4.11.3-1 and
Mitigation Measure 4.11.3-2a through

Mitigation Measure 4.11.3-2b:

Funding for Law Enforcement Services

*(Applicability – No Action, Proposed Action, and All
Alternatives)*

PVSP EIR Mitigation Measures 4.11.3-1 and 4.11.3-2a through 4.11.3-2b require a special benefit assessment district or other funding mechanism to ensure adequate funding for the ongoing maintenance and operation of law enforcement services. In addition, land shall be set aside for a substation and a Development Agreement for facilities, staffing and vehicles shall be arranged with Placer County. The full mitigation measure text is available in Appendix 3.0.

Impact PUB-2 Demand for Fire Protection Services

No Action Alt. The residential units and the commercial and public uses proposed under the No Action Alternative would require fire protection services. The effect on fire protection services would be **significant**. However, with mitigation, the effect on fire protection services would be **less than significant**.

Implementation of the No Action Alternative would result in the development of a large scale mixed use community with about 24,000 residents. According to County staffing ratios for fire protection personnel, full buildout of the No Action Alternative would require up to 21 firefighters and up to four support personnel. Existing fire services in the project area would be inadequate in terms of firefighters, equipment, and facilities to serve the proposed development.

Recognizing the need for fire service, two new fire stations are proposed as part of the No Action Alternative. As with the Proposed Action, it is anticipated that under the No Action Alternative, the western fire station would be constructed and equipped prior to issuance of a certificate of occupancy for the first dwelling unit located west of Watt Avenue. The eastern fire station would be constructed and equipped prior to issuance of a building permit for the 5,000th dwelling unit. Analysis of impacts related to construction of all development, including public facilities such as the two fire stations, is presented in each of the topical areas contained in this EIS. No additional environmental impacts from the construction and operation of the fire stations would occur. As the proposed fire stations would meet County standards for serving residents and businesses, the No Action Alternative would not adversely affect the provision of fire protection services to the project site or to the surrounding areas.

With respect to the adequate staffing of the fire stations, the Placer County Fire Department (PCFD) would monitor the development on the project site and add staff and equipment to ensure that the response time standard is met. Nonetheless, the No

Action Alternative would create a demand for fire services which will require the addition of personnel and equipment, and this effect would be **significant**.

In addition to providing fire protection services from existing and new fire stations, to minimize the risk from wildland fires, the PCFD would also implement a fire management plan that includes maintenance of firebreaks and periodic fuel reduction (mowing, grazing, etc.), subject to the management standards included in the Section 404 permits, especially within the open space areas on the site. Open space buffer areas, as determined adequate by the PCFD, would be maintained at the perimeter of all open space preserves for fuel modification and fire management, among other uses. All fences at the perimeter of the open space preserves would be constructed of non-combustible materials, except that wood posts may be used in post and cable barriers adjacent to landscape corridors and street edges. Firebreaks would provide a contained area to minimize the spread of fires. The lack of combustible fence materials would also minimize the risk of fire by reducing the amount of potential fire fuel. The PCFD's fire management plan would ensure that there is adequate access to the site, and that there is adequate fire staff to serve the project site in the event of a wildland fire.

PVSP EIR Mitigation Measure 4.11.2-1 would address the effect from demand for fire protection services. The USACE assumes that Placer County would impose this mitigation measure on the No Action Alternative to address this effect. The mitigation measure requires the applicants to establish a special benefit assessment district or other funding mechanism to assure adequate funding for the ongoing maintenance and operation of fire protection and related services, with funding responsibilities imposed on residential and commercial properties within the Specific Plan area. The benefit district or other funding mechanism shall be maintained until such time as the County determines that property tax revenues are adequate to maintain the required staffing. The PVSP EIR finds that this mitigation measure would fully mitigate the demand for fire protection services to less than significant. The USACE also finds that the mitigation measure would fully mitigate the effect of the No Action Alternative, and this effect would be **less than significant** after mitigation.

**Proposed
Action (Base
Plan and
Blueprint
Scenarios),
Alts. 1
through 5**

Implementation of the Proposed Action would result in the development of a large-scale mixed-use community with about 30,000 residents under the Base Plan scenario and about 50,000 residents under the Blueprint scenario. According to County staffing ratios for fire protection personnel, full buildout of the Proposed Action under the Base Plan would require up to 39 firefighters and up to 7 support personnel. Due to the higher density of development, primarily residential, up to 60 firefighters and up to 11 support personnel would be required if the site were developed under the Blueprint scenario. All of the alternatives would construct a project broadly similar to the Proposed Action and would be located on the same site as the Proposed Action, but with slightly different development footprints in order to avoid additional wetlands.

As with the No Action Alternative, development under the Proposed Action and the alternatives would require the construction of two new on-site fire stations to serve the project site. The new fire stations would be developed to have adequate capacity to meet County standards for serving residents and businesses at buildout. Therefore, these alternatives would not adversely affect the provision of fire protection services to the project site or to the surrounding areas.

However, as with the No Action Alternative, the Proposed Action and Alternatives 1 through 5 would result in the demand for fire protection services and this effect would be **significant**. **PVSP EIR Mitigation Measure 4.11.2-1** would address the effect from demand for fire protection services. This mitigation measure was adopted by Placer County at the time of project approval and will be enforced by the County on the Proposed Action Base Plan. The USACE assumes that Placer County would impose the same mitigation measure on the Proposed Action Blueprint scenario and Alternatives 1 through 5 to address this effect. The mitigation measure would fully mitigate the effect to **less than significant**.

PVSP EIR Mitigation Measure 4.11.2-1: Funding for Fire Protection Services

(Applicability – No Action, Proposed Action, and All Alternatives)

*The Applicants will implement PVSP EIR Mitigation Measure 4.11.2-1. The mitigation measure requires the applicants to establish a special benefit assessment district or other funding mechanism to assure adequate funding for the ongoing maintenance and operation of fire protection and related services, with funding responsibilities imposed on residential and commercial properties within the Specific Plan area. The benefit district or other funding mechanism shall be maintained until such time as the County determines that property tax revenues are adequate to maintain the required staffing. The full text of the mitigation measure text is presented in **Appendix 3.0**.*

Impact PUB-3 Demand for School Facilities

No Action Alt. The buildout of the No Action Alternative would generate elementary, middle and high school students. As a result, there would be a need in the project area for approximately three elementary schools, one middle school, and one high school. The land use plan for the No Action Alternative provides sites for these schools. Analysis of impacts related to construction of all development, including public facilities such as schools, is presented in each of the topical areas contained in this EIS. No additional environmental impacts from the construction and operation of the schools would occur.

Consistent with state law and County policy, the applicants shall enter into mutual benefit impact fee agreements with the school districts to pay for the development of the new schools proposed under the No Action Alternative. With adequate funding, the No Action Alternative would not adversely affect the provision of school services to the

project site or to the surrounding areas. Therefore, the No Action Alternative would have a **less than significant** effect and mitigation would not be required.

**Proposed
Action (Base
Plan and
Blueprint
Scenarios),
Alts. 1
through 5**

The buildout of the Proposed Action Base Plan would generate approximately 4,212 elementary school students, 1,417 middle school students, and 2,644 high school students. The Proposed Action Blueprint Scenario would generate approximately 6,444 elementary school students, 2,168 middle school students, and 4,045 high school students. As a result, there would be a need in the project area for approximately six elementary schools, two middle schools, and one high school under either scenario.

The Proposed Action includes five elementary schools, two middle schools, and one high school which would be within the CJUSD boundary and one elementary school within the EJESD boundary and would adequately serve the demand for school facilities.

Analysis of impacts related to construction of all development, including public facilities such as schools, is presented in each of the topical areas contained in this EIS. No additional environmental impacts from the construction and operation of the schools would occur.

Similar to the Proposed Action, Alternatives 1 through 5 would include development of a total of six elementary schools, two middle schools, and one high school to serve the residential development. The existing and proposed school facilities would have adequate capacity to serve the new student populations under these alternatives. Consistent with County policy, the applicants would enter into mutual benefit impact fee agreements with the school districts to ensure adequate funding for the new schools. With adequate funding, these alternatives would not adversely affect the provision of school services to the project site or to the surrounding areas.

The Proposed Action and Alternatives 1 through 5 would have a **less than significant** effect on school services.

Impact PUB-4 Demand for Library Services

**No Action
Alt.** The No Action Alternative would increase demand for library services until a new library is completed and would thus have a **significant** effect on public libraries. With mitigation, the effect on public libraries would be **less than significant**.

Based on the level of service standard of 0.40 square foot (0.04 square meter) of facility space per capita provided by the Auburn-Placer County Library Long-Range Plan, a population of about 24,000 persons under the No Action Alternative would generate a demand for an additional 9,600 square feet (891.9 square meters) of library space at full buildout. The No Action Alternative designates land that would allow for the establishment of a branch library in or near the Town Center.

Although the City of Roseville operates the nearest library to the project site, which is the recently opened Riley Library at Mahany Park and the project residents could use that facility until the proposed permanent facility is developed on the project site, residents of the project site would not have access to a full range of library services until a permanent facility is located within the project site and is operational. This effect would however be temporary since funding for construction of a new library would be required prior to construction of any dwelling units. Therefore, new library facilities would be developed concurrently with the earliest phases of residential development.

PVSP EIR Mitigation Measures 4.11.12-1a through 4.11.12-1c would address the impact on library services. The USACE assumes that Placer County would impose these mitigation measures on the No Action Alternative to address this effect. These mitigation measures require the formation of a financing mechanism to ensure immediate funding for adequate library infrastructure that meets the standards of the Auburn-Placer County Library Long-Range Plan. In order to maintain library operations and maintenance the applicants are required to establish a funding mechanism to ensure adequate funding of the Specific Plan's library facilities. The PVSP EIR finds that these mitigation measures would fully mitigate the effect associated with the demand for library services to less than significant. The USACE also finds that the impact would be **less than significant** after mitigation.

**Proposed
Action (Base
Plan and
Blueprint
Scenarios),
Alts. 1
through 5**

Based on the level of service standard of 0.40 square feet (0.04 square meters) of facility space per capita provided by the Auburn-Placer County Library Long-Range Plan, a population of approximately 30,000 under the Proposed Action Base Plan scenario would generate a demand for an additional 12,000 square feet (1114.8 square meters) of library space at full buildout. The Proposed Action Blueprint scenario's projected population of up to 50,000 would generate demand for 20,000 square feet (1858.1 square meters) of library space. The Specific Plan proposes that an approximately 13,905-square-foot (1291.8 square meters) branch library be located in or near the Town Center.

All of the alternatives would add new population to Placer County. Similar to the Proposed Action, Alternatives 1 through 5 would generate a demand for 13,905 square feet (1291.8 square meters) of library space. Based on the significance criteria listed above and for the same reasons presented for the No Action Alternative, the demand for library services would result in a **significant** effect under the Proposed Action and alternatives.

PVSP EIR Mitigation Measures 4.11.12-1a through 4.11.12-1c would be implemented to ensure adequate funding of library services. These mitigation measures were adopted by Placer County at the time of project approval and will be enforced by the County on the Proposed Action Base Plan. The USACE assumes that Placer County would impose the same mitigation measures on the Proposed Action Blueprint scenario and Alternatives 1 through 5 to address this effect. The mitigation measure would fully mitigate the effect to **less than significant**.

PVSP EIR Mitigation Measure 4.11.12-1a through

PVSP EIR Mitigation Measure 4.11.12-1c: Funding for Library Services

(Applicability – No Action, Proposed Action, and All Alternatives)

The Applicants will implement PVSP EIR Mitigation Measures 4.11.12-1a through 4.11.12-1c. These mitigation measures require the formation of a financing mechanism to ensure immediate funding for adequate library infrastructure that meets the standards of the Auburn-Placer County Library Long-Range Plan. In order to maintain library operations and maintenance the applicants are required to establish a funding mechanism to ensure adequate funding of the Specific Plan's library facilities. The full mitigation measure text is available in Appendix 3.0.

Impact PUB-5 Indirect Effects on Public Services from Off-Site Infrastructure Not Constructed as Part of the Project

No Action Alt., Proposed Action (Base Plan and Blueprint Scenarios), and Alts. 1 through 5	<p>The construction and operation of off-site water pipeline infrastructure by the Placer County Water Agency (PCWA) which would be used by the No Action Alternative, Proposed Action, and Alternatives 1 through 5, would result in less than significant effects to public services.</p> <p>Construction activities such as additional truck traffic could affect emergency response times for police and fire protection. However, construction would be temporary and the project would be subject to standard County and state traffic control and access procedures.</p> <p>The effect on public services from the water pipeline infrastructure project would be less than significant.</p>
---	---

3.13.6 RESIDUAL SIGNIFICANT IMPACTS

All effects associated with public services would be mitigated to less than significant levels. Therefore, there would be no residual significant impacts for the Proposed Action and any of the alternatives.

3.13.7 REFERENCES

Placer County. 2006. "Placer Vineyards Specific Plan Final Environmental Impact Report" (State Clearinghouse No. 1999062020).

Placer County. 2010. "South Placer Substation."

<http://www.placer.ca.gov/Departments/Sheriff/Stations/Loomis.aspx>. Accessed February 2011.