

Isabella Lake Dam Safety Modification Project Progress & Recreation Plan Update

John Menniti, PE, PMP
Senior Project Manager

Nov. 21, 2014



®

U.S. Army Corps of Engineers
BUILDING STRONG®



Meeting Agenda

I. Isabella Lake Dam Project Overview

- A. Project Purpose
- B. Project Plan
- C. Project Schedule
- D. Environmental Review & Public Involvement Timeline

II. Recreation Plan Update

- E. Proposed Mitigation
- F. Schedule

III. Conclusion

- G. Common Questions
- H. Points of Contact
- I. Discussion/Questions



A. Project Purpose

Safety Risks

- 🌊 Overtopping - huge, rare flood fills reservoir and overtops dam causing erosion and potential failure
- 🌍 Earthquake - sudden, violent shaking severely damages the dam and causes catastrophic failure a short time later
- 💧 Seepage - seepage of water through dam may become excessive, causing erosion and potential failure

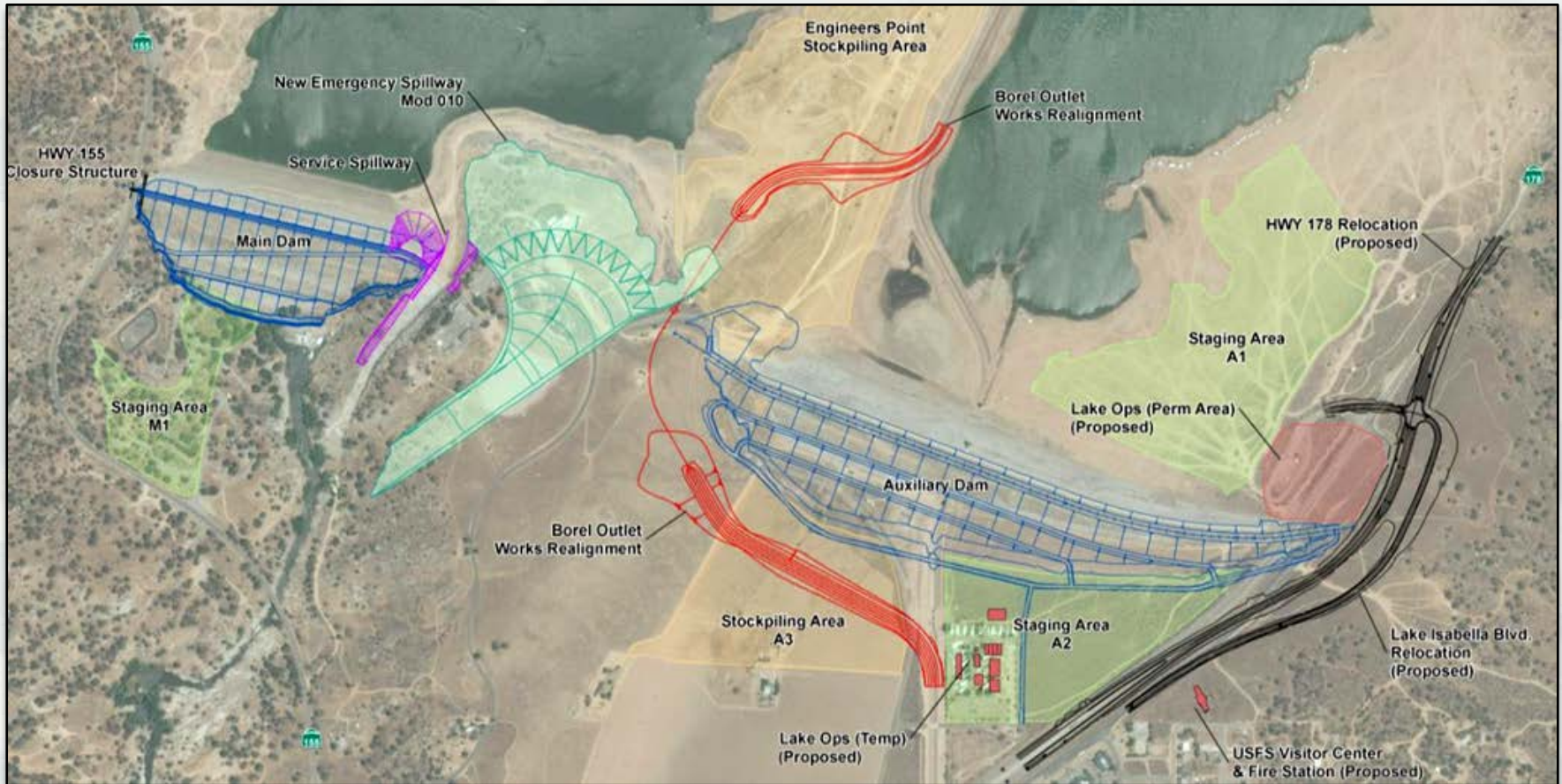


Project Benefits

1. Improve public safety
2. Reduce flood risk to downstream communities
3. Increase dam stability
4. Minimize overtopping
5. Control seepage
6. Extend infrastructure lifespan
7. Remove current pool restriction (since 2006)



B. Project Plan



Current as of Aug. 8, 2014

Phase I: Relocations

Phase II: Dams & Spillways

Phase III: Borel Outlet Works

Real estate, Hwy 178, utilities, USFS/USACE facilities

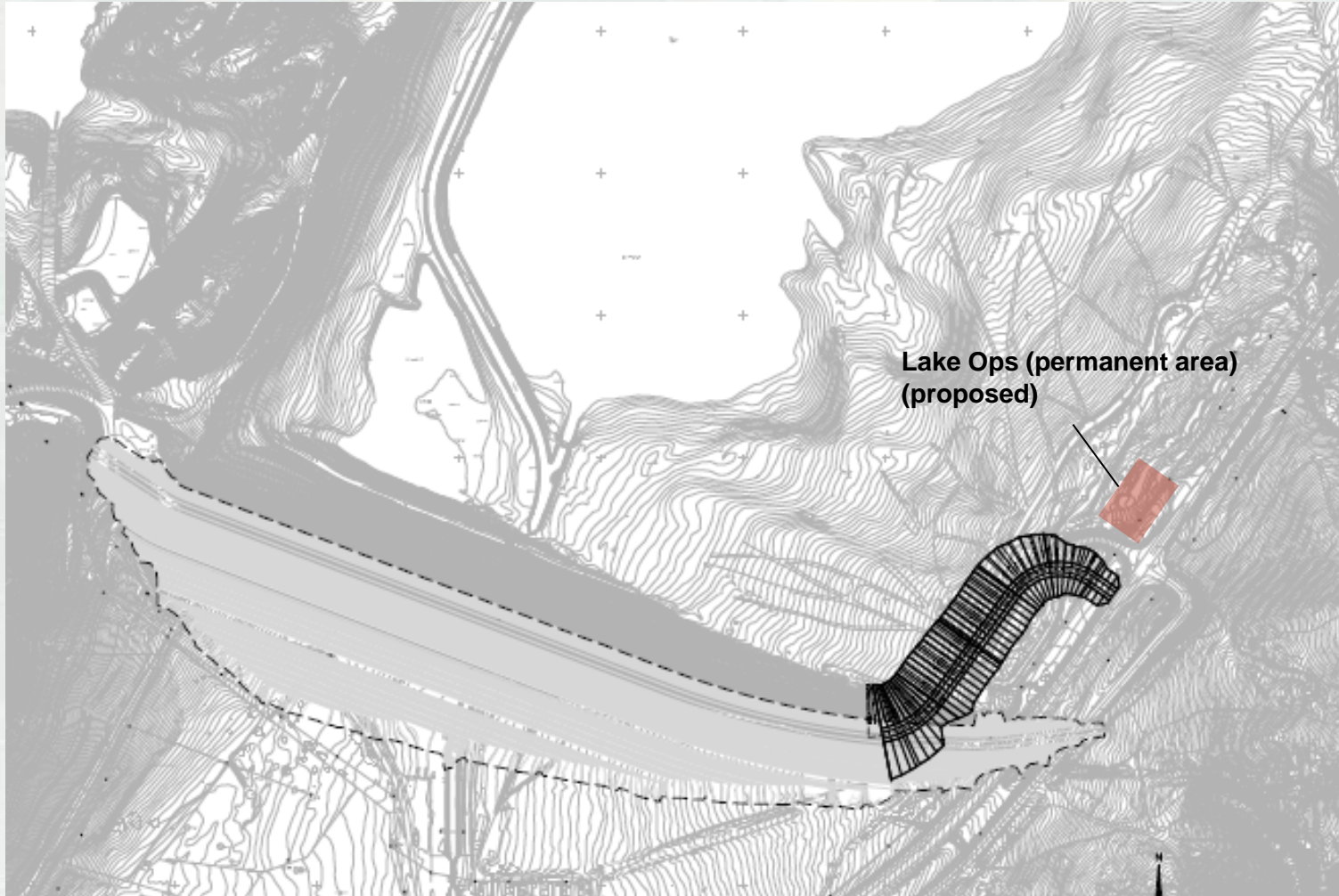
16' main & auxiliary dam raise, service spillway modifications, new emergency spillway & labyrinth weir, hwy 155 closure gate

Channel tie-ins, bored tunnel, conduit, control tower, inlet/outlet

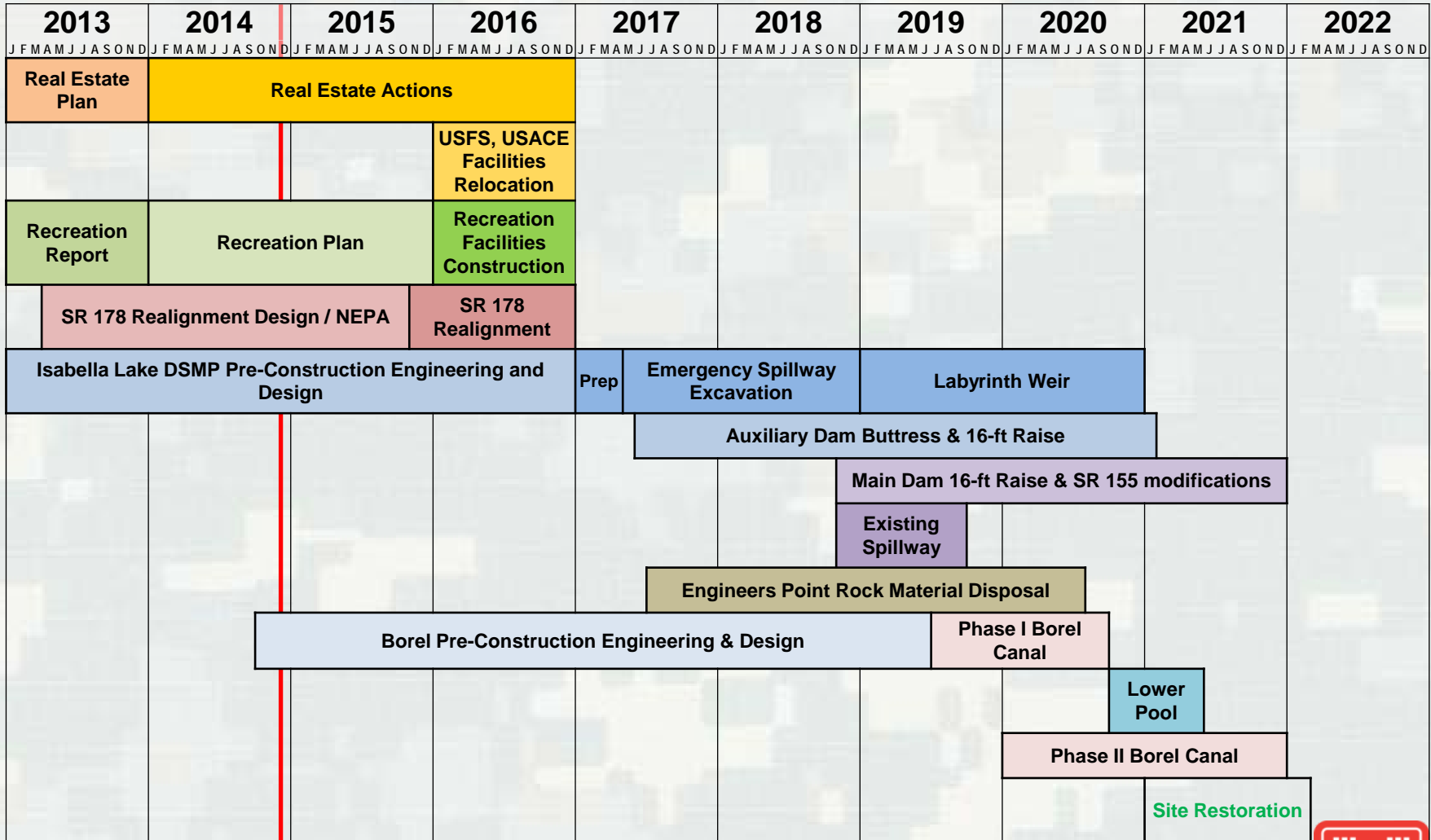


B. Project Plan (cont.)

(Proposed Auxiliary Dam Left Abutment Option)



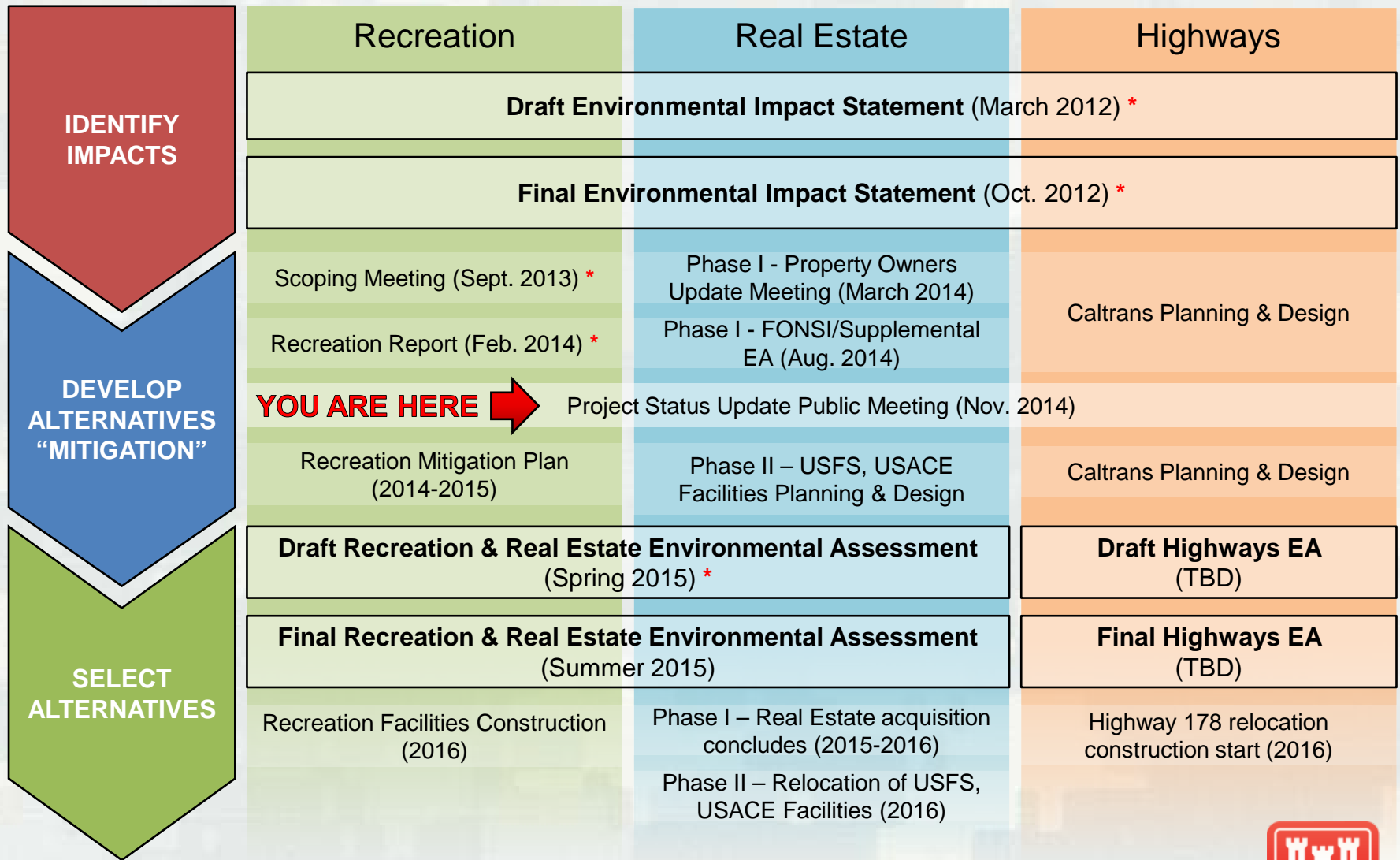
C. Project Schedule



Current as of Nov. 17, 2014



D. Environmental Review & Public Involvement Timeline



* Public review & comment opportunity

Required National Environmental Policy Act document



E. Proposed Recreation Mitigation Measures

Affected Area	(1) Recreation Impacts (see Final EIS)	(2) Proposed Mitigation Measures	(3) Preferred Alternative
Boat Launch 19	Permanent Closure (emergency spillway)	Develop “like-kind” facilities (boat launch, bathrooms, parking) at French Gulch Recreation Site	Draft/Final Recreation EA’s planned in spring/summer 2015
Auxiliary Dam Recreation Site	Temporary Closure (construction staging area),	Develop access to Old Isabella & South Fork Recreation Sites to accommodate increased recreation use	
Old Isabella Recreation Site	No Closure, but Increased traffic and use from Aux Dam closure	Develop access and provide facilities for increased recreation use, encourage dispersed use to South Fork Recreation Site	
Main Dam Campground	Remain Closed (construction staging area)		
Engineers Point Recreation Site	Access changes (Barlow Road & Ponderosa Road)	USACE is coordinating with USFS and other agencies, stakeholders and public to determine “like-kind” capacity of recreation facilities, proposed mitigation measures/alternatives	
Main Dam Campground	Footprint altered permanently (new toe of Main Dam)		
Auxiliary Dam Recreation Site	Footprint altered permanently		



F. Recreation Plan Schedule

Schedule

1. Draft Environmental Impact Statement - March 2012
2. Final Environmental Impact Statement - Oct. 2014
3. Scoping Meeting – Sept. 2013 *
4. Recreation Report – Feb. 2014 *
- ➔ 5. Project & Recreation Plan Update Meeting – Nov. 2014
6. Draft Recreation & Real Estate EA – Spring 2015 *
7. Final Recreation & Real Estate EA – Summer 2015
8. Recreation Facilities Construction – 2016
9. Relocation of USFS, USACE Facilities – Fall 2015 thru 2016

* Public review & comment opportunity



G. Common Questions

1. Why is the Corps already designing the visitor center? When will we have a chance to comment?

- USACE and USFS must start an initial design to maintain entire project schedule
- Proposed design is a federally-preferred alternative
- Additional opportunities for public input in 2015
- Proposed design location is preferred option, but other locations may be considered if they meet design constraints
- USACE and USFS design constraints:
 - Facilities must be replaced in “like-kind”
 - Facilities must be relocated to existing federal property unless extreme circumstances are encountered
 - USFS directed to reduce cost/size of their operations
 - Relocation must not be a double-move



H. Points of Contact

- **Senior Project Manager**

John Menniti, PE, PMP (916) 557- 7761 (o), john.p.menniti@usace.army.mil

- **Project Manager**

Patrick Howell, (916) 557- 5176 (o), patrick.howell3@usace.army.mil

- **Public Affairs Specialist**

John Prettyman, (916) 557-6940, john.r.prettyman@usace.army.mil

Main Contact Info:

Phone: (916) 557-5100 (o)

Email: isabella@usace.army.mil

Website: www.bit.ly/IsabellaDam



I. Discussion/Questions

