

WEST SACRAMENTO PROJECT, WEST SACRAMENTO, CALIFORNIA

Yolo Bypass East Levee Reach Project Supplemental NEPA Environmental Assessment/CEQA Initial Study and Proposed Mitigated Negative Declaration

Sacramento District
US Army Corps of Engineers

17 November 2021



US Army Corps
of Engineers®





PROJECT PARTNERS



**US Army Corps
of Engineers®**



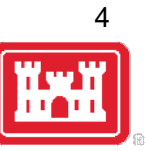


ON-LINE COMMUNICATION TIPS

If you have joined by computer and computer audio, you will only see the panelist and the presentation deck.

For help with audio problems use the Q&A chat at the bottom of the screen.

| Computer Use | Phone Only Use |
|---|---|
| <ul style="list-style-type: none">- You will be muted upon entry- To “raise hand”, click on three dots- Please lower hand after you are recognized- We will un-mute you during the public comment period at the end of the presentation- To get help, click on the Q&A icon at the bottom of the screen | <ul style="list-style-type: none">- To raise your hand, use *3- We will un-mute you. |



HOW TO PROVIDE COMMENTS

1. Notify us via Webex during this meeting that you would like to make comments at the end of this presentation. **Public comments can be made but should be submitted in writing to allow the USACE, and Non-federal sponsors to adequately respond to and address the comments on the environmental review. Commenters are limited to one comment period of 2 minutes. Recorded and reviewed for applicability to the EA-IS.**
2. In writing to the following addresses:

West Sacramento Area Flood Control Agency
Attn: Greg Fabun, General Manager
1110 West Capitol Avenue
West Sacramento, California 95691
Email: gregf@cityofwestsacramento.org

U.S. Army Corps of Engineers
1325 J Street, 10th floor
Sacramento, CA 95814
re: Yolo Bypass East Levee
Email: spk-pao@usace.army.mil

please use “Yolo Bypass East Levee” in the subject line

There will be no answers to comments at this meeting. Responses to comments will be provided in the Final Supplemental EA-IS for comments received here and in writing.



AGENDA

- **2016 West Sacramento Project**
 - West Sacramento Project Final EIS/EIR

- **Yolo Bypass East Levee Reach project**
 - Supplemental NEPA Environmental Assessment - CEQA Initial Study

- **Opportunities for Public Input**
 - During comment period after the presentation
 - Mail-in using information provided



PROJECT PURPOSE AND NEED

City of West Sacramento sits at the confluence of the American and Sacramento Rivers, adjacent to the Yolo Bypass and directly within the flood plain of the Sacramento River. West Sacramento is almost completely bound by floodways and levees with the Yolo Bypass to the west, the Sacramento Bypass to the north, the Sacramento River to the east and the South Cross levee along its southern boundary. After record flooding in 1986 and 1997, it became clear that the city and the region needed to modernize its levee system to reduce the risk of flooding.

Flooding from levee failure threatens the safety of over 53,151 people and thousands of residential and commercial structures (\$6.7 billion estimated)



WEST SACRAMENTO PROJECT



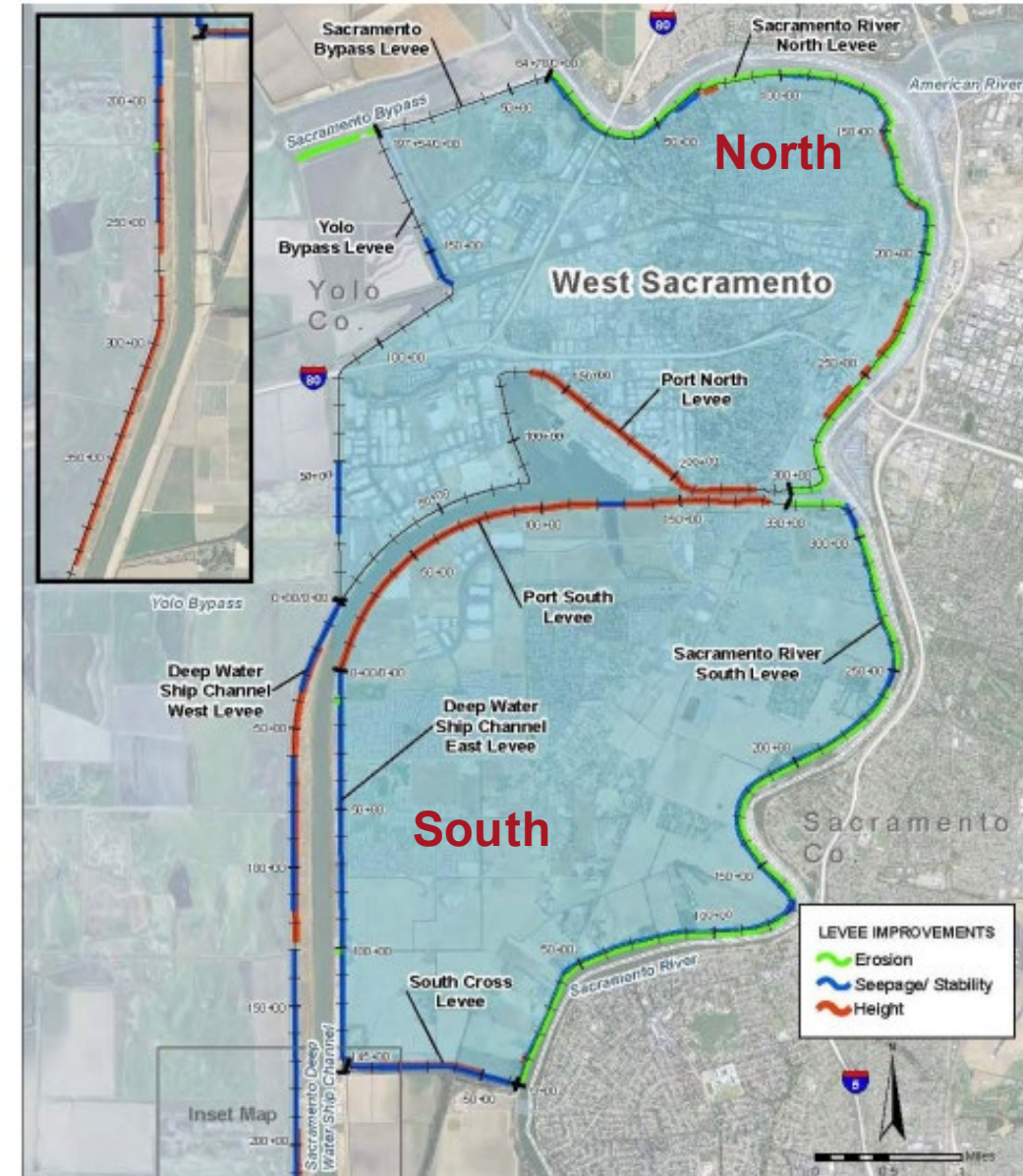
Project History:

- 1986 Series of storm resulted in the Flood of Record (Sacramento and American)
- 1988/89 Sac Urban Area Levee Reconstruction (Recommended 34 miles of repairs)
- 1990 Construction repairs ~6 miles (Barge Canal entrance and South Cross levee)
- 1992 Sacramento Metropolitan Area General Reevaluation Report
- 1997 New Flood of Record – series of storms late December 1996 /January 1997
- 1999 Energy & Water Development Appropriation Act of 1999 (Public Law 105-245)

- 2009 West Sacramento General Reevaluation Report (GRR) - USACE w/WSAFCA
- 2010 Energy & Water Development Appropriation Act of 2010
- 2015 West Sacramento GRR Feasibility Study Complete
- 2016 West Sacramento, CA - Project Chief's Report Signed
- 2019 West Sacramento Project Design Agreement Executed 05 APRIL 2019
- 2021 West Sacramento Project First Set of Design, Plan and Specs complete

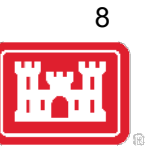
Project Authorized:

The Chief of Engineers Report signed April 26, 2016 recommended levee improvements to correct seepage, stability and erosion deficiencies in both North and South basins. The project utilizes cut off walls, seepage berms and bank protection along the Sacramento River, the Deep Water Ship Channel east and west levees and the Yolo Bypass. The project also includes the recently completed Southport Set-back Levee along the southern portion of the Sacramento River that includes mitigation lands for riparian and upland habitat loss.





WEST SACRAMENTO LEVEES



West Sacramento Levee Vulnerability Results

- **Seepage and Underseepage** - Significant risk to the stability and reliability
- **Levee Erosion** - Significant erosion can lead to the failure of the levee.
- **Slope Stability** - Materials used to construct them were not selected for their suitability, merely their availability, and were dredged from the riverbed
- **Levee Overtopping** - Not built to modern engineering standards and levee failures upstream are assumed not to occur, levee overtopping would potentially lead to failure of the levee and cause devastating flooding
- **Vegetation and Encroachments** - Vegetation: Inhibits visibility and accessibility; contributes to through-seepage; windthrow (plant materials) and wave runup; slope stability (roots and deleterious materials) and burrowing animals.



WEST SACRAMENTO PROJECT YOLO BYPASS EAST LEVEE (YBEL) REACH



Investigation and Project Features in YBEL Reach

Investigation

- The entire levee alignment from segments Z to AE
- Evaluations concentrated in segments AA, AE and AD
- No work is required in segment AE (north of the RR tracks)

Proposed YBEL Reach Improvements

- Toe-drain and pump station system in segment AD
- Combination seepage/stability berm in segment AA
- No levee degrade in segment AA
- Partial degrade for embankment repairs segment AD
- Waterside revetment above OHWM (segments Z to AC)





U.S. ARMY

FOR MORE INFORMATION...



About ▾ Business With Us ▾ Missions ▾ Locations ▾ Careers ▾ Media ▾ Library Contact ▾ Coronavirus

Search Sacramento

US Army Corps of Engineers Sacramento District Website

[Home](#) / [Missions](#) / [Civil Works](#) / [West Sacramento](#)



West Sacramento Levee Improvement Project

West Sacramento sits at the confluence of the American and Sacramento Rivers, adjacent to the Yolo Bypass and directly within the flood plain of the Sacramento River. After record flooding in 1986 and 1997, it became clear that the city and the region needed to modernize its levee system to reduce the risk of flooding.

By 2002, an initial round of levee improvement construction in West Sacramento was largely complete, raising more than a mile of the Sacramento Bypass south levee by as much as 5 feet, and raising 4.5 miles of the Yolo Bypass levee by as much as 5.5 feet. In 2011, the Corps also began work on a setback levee along the Sacramento River south levee near South River Road as part of the Sacramento River Bank Protection Project.

The West Sacramento Area Flood Control Agency continues to move forward with levee improvements throughout the city, as well. WSAFCA completed improvements to the Sacramento Bypass levee and the Sacramento River north levee in 2011, near the I Street Bridge on the Sacramento River north levee in 2008, and is currently finalizing plans to build 6 miles of setback levee along the Sacramento River south levee.

After years of work, West Sacramento has made great strides to reduce the flood risk, but additional work remains necessary.

In July 2014, the Corps released a draft general re-evaluation report, which outlined the tentatively selected plan for more improvements for the full levee system surrounding the City of West Sacramento. Once the report and plan is finalized and approved by Corps headquarters, it becomes eligible for Congressional authorization. If authorized and funded by Congress, the project would be ready to move into design and construction phases, which would be cost-shared between the Corps, state of California and WSAFCA.

Project Area





YOLO BYPASS EAST LEVEE REACH



National Environmental Policy Act (NEPA) and California Environmental Quality Act (CEQA)

What: Supplemental Environmental Assessment (EA) and CEQA Initial Study (IS)

Why: Purpose to provide decision-makers, stakeholders and the public with information about implementation of a project through public review and this meeting

How: Evaluates and analyzes potential environmental impacts as a result of project implementation and shows compliance and provides mitigation measures to reduce impacts



YOLO BYPASS EAST LEVEE (YBEL) REACH

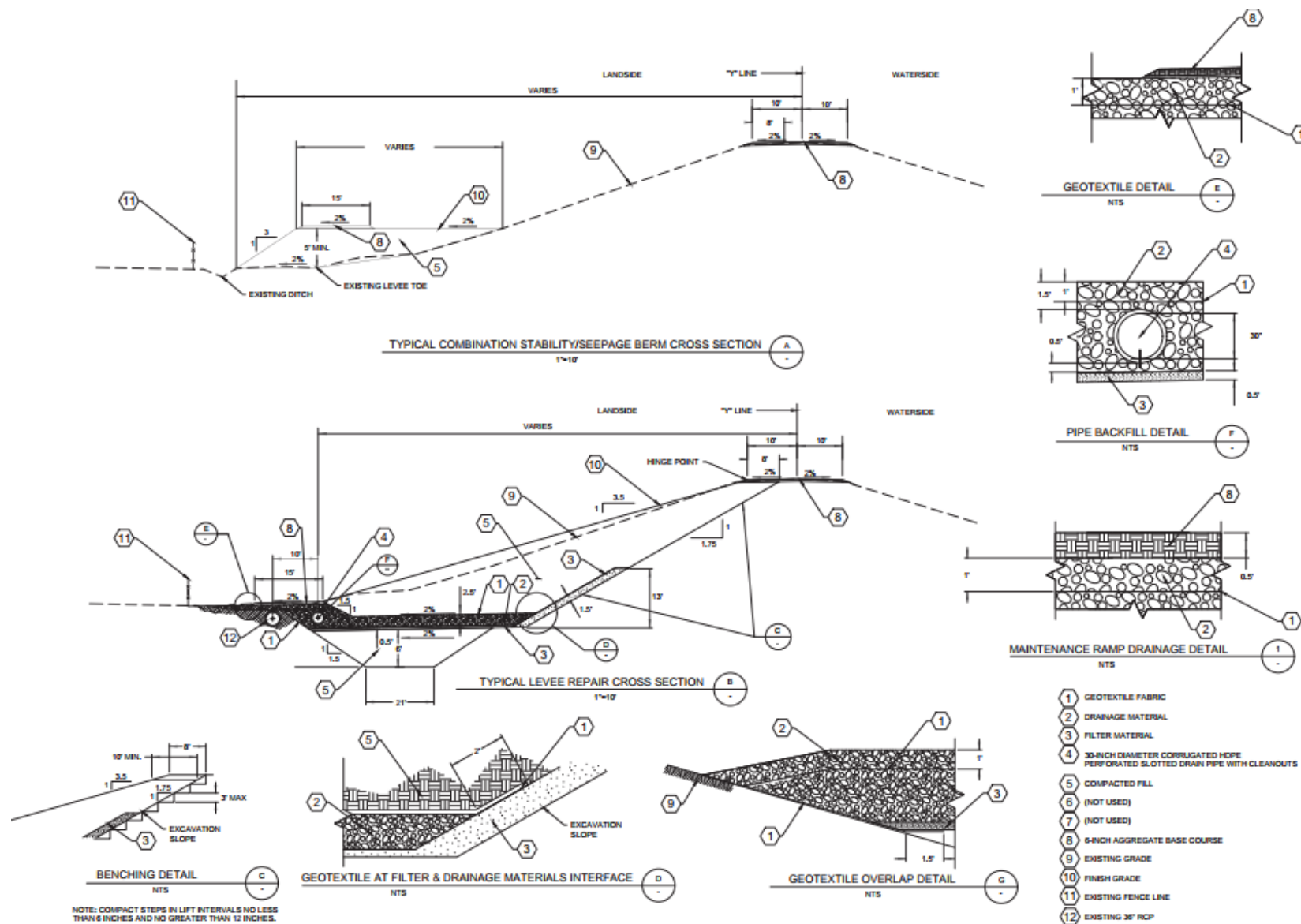


PROJECT FEATURES

- Installation of a 2,150-foot-long stability berm on the landside of segment AA of the YBEL
- Installation of 2,400 feet of rock slope protection on waterside of segment AA of the YBEL
- Retain maintenance road on landside toe of segment AA following construction
- Upgrade to existing subgrade levee drainage system including installation of 825 feet of 30-inch diameter perforated pipe and subgrade pump station
- Reconstruction of the landside slope of segment AD to 3.5H:1V
- Waterside revetment above OHWM in segment AE



TYPICAL STABILITY/SEEPAGE BERM





SUPPLEMENTAL EA-IS

RESOURCE TOPICS REVIEWED AND ANALYZED

- Aesthetics/Visual Resources
- Hydrology and Water Quality
- Biological Resources
- Cultural and Tribal Cultural Resources
- Transportation and Circulation
- Air Quality
- Geology and Soils
- Greenhouse Gas Emissions and Energy Consumption
- Noise and Vibration
- Hazards and Hazardous Materials
- Utilities and Service Systems

A few resource topics are not applicable to the YBEL EA-IS and were eliminated from detailed analysis. Environmental Justice; Land Use and Agriculture and Socioeconomics



Access from Interstate 80

- Enterprise Boulevard
- West Capital Avenue
- Channel Drive

HAUL ROUTES





MITIGATION MEASURES

Air Quality

- Dust control; Reduce track out
- Minimize idling time (shut off engines; limit idling to < 5 minutes)

Biological Resources

- Worker Environmental Awareness Program (WEAP) Training
- Habitat Protection and Special-status species (GGS, WPT, Swainson's Hawk, Burrowing Owl)
- Pre-construction survey for nesting birds
- Maintain sensitive natural communities
- Reseed disturbed areas with native grasses

Cultural and Tribal Cultural Resources

- WEAP Training
- Inadvertent Discovery of Cultural Materials or Human Remains
- Procedures to evaluate TRC and implement avoidance and minimization

Hydrology and Water Quality

- Prepare Stormwater Pollution Prevention Plan

Transportation and Circulation

- Traffic Control Plan



ENVIRONMENTAL COMMITMENTS, CONSISTENCY AND COMPLIANCE



Commitments

- West Sacramento Project Final EIS/EIR
- Biological Opinion (USFWS)

Consistency

- Delta Stewardship Council, Delta Plan

Compliance

- Appendix D: Compliance with Environmental Laws and Regulations i.e. Clean Air Act of 1972; Federal/CA ESA; Clean Water Act of 1972; Executive Order 11990, Protection of Wetlands; Fish and Wildlife Coordination Act; Migratory Bird Treaty Act; National Environmental Policy Act; National Historic Preservation Act; Noise Control Act of 1972; California Environmental Quality Act



ANTICIPATED CONSTRUCTION SCHEDULE



Pre-construction (Spring 2022)

- Mobilization, staging areas, and site preparation

Site Construction (Summer 2022)

- Segment AA: Create stability berm, install revetment, and retain levee maintenance road
- Segment AD: Install new levee drainage pipe and pump station, reconstruct landside slope

Post-Construction (Fall 2022)

- Reseed with mixture of native grasses
- Restore staging area and access roads to pre-construction conditions
- Clear trash, rubbish and return site to safe and neat conditions



NEPA/CEQA PROCESS AND NEXT STEPS

Draft Supplemental EA-IS is available at:

USACE: www.spk.usace.army.mil/Missions/Civil-Works/West-Sacramento/

WSAFCA: www.cityofwestsacramento.org/government/departments/city-manager-s-office/floodprotection/levee-projects-overview

Public Comment Period: November 5 – December 6

Decision Documents: Finding of No Significant Impact and Mitigated Negative Declaration

- WSAFCA Board of Directors – pursuant to CEQA Notice of Intent to Adopt will consider adoption of the EA-IS on December 16, 2021

Anticipated Final Document: Winter 2022



STAY INFORMED, NOTICES AND CLOSURES



Construction Activities, Scheduling and Temporary Road Closures

Subscribe to construction and traffic updates at:

[www.spk.usace.army.mil/Missions/Civil-Works/West-Sacramento/
www.cityofwestsacramento.org/government/departments/city-manager-s-
office/floodprotection/levee-projects-overview](http://www.spk.usace.army.mil/Missions/Civil-Works/West-Sacramento/www.cityofwestsacramento.org/government/departments/city-manager-s-office/floodprotection/levee-projects-overview)

[https://www.cityofwestsacramento.org/government/departments/citymanager-s-
office/flood-protection/levee-projects-overview](https://www.cityofwestsacramento.org/government/departments/citymanager-s-office/flood-protection/levee-projects-overview)



U.S. ARMY

FOR MORE INFORMATION...



About ▾ Business With Us ▾ Missions ▾ Locations ▾ Careers ▾ Media ▾ Library Contact ▾ Coronavirus

Search Sacramento

US Army Corps of Engineers Sacramento District Website

[Home](#) / [Missions](#) / [Civil Works](#) / [West Sacramento](#)



West Sacramento Levee Improvement Project

West Sacramento sits at the confluence of the American and Sacramento Rivers, adjacent to the Yolo Bypass and directly within the flood plain of the Sacramento River. After record flooding in 1986 and 1997, it became clear that the city and the region needed to modernize its levee system to reduce the risk of flooding.

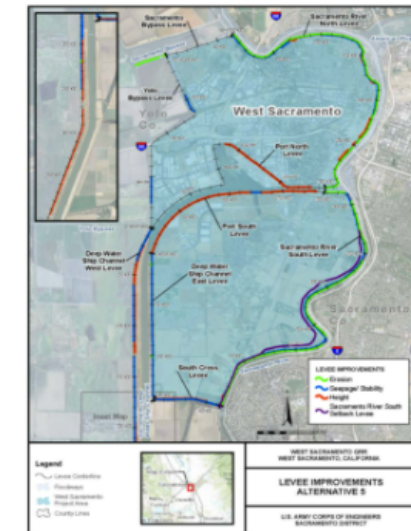
By 2002, an initial round of levee improvement construction in West Sacramento was largely complete, raising more than a mile of the Sacramento Bypass south levee by as much as 5 feet, and raising 4.5 miles of the Yolo Bypass levee by as much as 5.5 feet. In 2011, the Corps also began work on a setback levee along the Sacramento River south levee near South River Road as part of the Sacramento River Bank Protection Project.

The West Sacramento Area Flood Control Agency continues to move forward with levee improvements throughout the city, as well. WSAFCA completed improvements to the Sacramento Bypass levee and the Sacramento River north levee in 2011, near the I Street Bridge on the Sacramento River north levee in 2008, and is currently finalizing plans to build 6 miles of setback levee along the Sacramento River south levee.

After years of work, West Sacramento has made great strides to reduce the flood risk, but additional work remains necessary.

In July 2014, the Corps released a draft general re-evaluation report, which outlined the tentatively selected plan for more improvements for the full levee system surrounding the City of West Sacramento. Once the report and plan is finalized and approved by Corps headquarters, it becomes eligible for Congressional authorization. If authorized and funded by Congress, the project would be ready to move into design and construction phases, which would be cost-shared between the Corps, state of California and WSAFCA.

Project Area





HOW TO PROVIDE COMMENTS

1. Notify us via Webex during this meeting that you would like to make comments at the end of this presentation. **Public comments can be made but we encourage comments be submitted in writing to allow the USACE, and Non-federal sponsors to adequately respond to and address the comments on the environmental review. Commenters are limited to one comment period of 2 minutes. Recorded and reviewed for applicability to the EA-IS.**
2. In writing to the following addresses:

West Sacramento Area Flood Control Agency
Attn: Greg Fabun, General Manager
1110 West Capitol Avenue
West Sacramento, California 95691
Email: gregf@cityofwestsacramento.org

U.S. Army Corps of Engineers
1325 J Street, 10th floor
Sacramento, CA 95814
re: Yolo Bypass East Levee
Email: spk-pao@usace.army.mil

please use “Yolo Bypass East Levee” in the subject line

There will be no answers to comments at this meeting. Responses to comments will be provided in the Final Supplemental EA-IS for comments received here and in writing.



ON-LINE COMMUNICATION TIPS

If you have joined by computer and computer audio, you will only see the panelist and the presentation deck.

For help with audio problems use the Q&A chat at the bottom of the screen.

| Computer Use | Phone Only Use |
|---|---|
| <ul style="list-style-type: none">- You will be muted upon entry- To “raise hand”, click on three dots- Please lower hand after you are recognized- We will un-mute you during the public comment period at the end of the presentation- To get help, click on the Q&A icon at the bottom of the screen | <ul style="list-style-type: none">- To raise your hand, use *3- We will un-mute you. |



PUBLIC COMMENT PERIOD

