

DRY LAND APPROVED JURISDICTIONAL DETERMINATION FORM¹
U.S. Army Corps of Engineers

This form should be completed by following the instructions provided in Section IV of the JD Form Instructional Guidebook.

SECTION I: BACKGROUND INFORMATION

A. REPORT COMPLETION DATE FOR APPROVED JURISDICTIONAL DETERMINATION (JD): May 2, 2018

B. DISTRICT OFFICE, FILE NAME, AND NUMBER: Sacramento District; 201800361 Blue Moon Drill Sites DP-1E, DP-2E, and DP-3E.

C. PROJECT LOCATION AND BACKGROUND INFORMATION:

State: California County/parish/borough: Mariposa City: [Click here to enter text.](#)
Center coordinates of site (lat/long in degree decimal format): Lat. 37.5656 °, Long. -120.2544 °
Universal Transverse Mercator: 10
Name of nearest waterbody: Lake McClure located approx.. 0.5 mile north.
Name of watershed or Hydrologic Unit Code (HUC): Upper Merced 18030008

- Check if map/diagram of review area is available upon request.
 Check if other sites (e.g., offsite mitigation sites, disposal sites, etc...) are associated with this action and are recorded on a different JD form.

D. REVIEW PERFORMED FOR SITE EVALUATION (CHECK ALL THAT APPLY):

- Office (Desk) Determination. Date: May 2, 2018
 Field Determination. Date(s): [Click here to enter a date.](#)

SECTION II: SUMMARY OF FINDINGS

A. RHA SECTION 10 DETERMINATION OF JURISDICTION.

There are **no** "navigable waters of the U.S." within Rivers and Harbors Act (RHA) jurisdiction (as defined by 33 CFR part 329) in the review area.

B. CWA SECTION 404 DETERMINATION OF JURISDICTION.

There are **no** "waters of the U.S." within Clean Water Act (CWA) jurisdiction (as defined by 33 CFR part 328) in the review area.

SECTION III: DATA SOURCES.

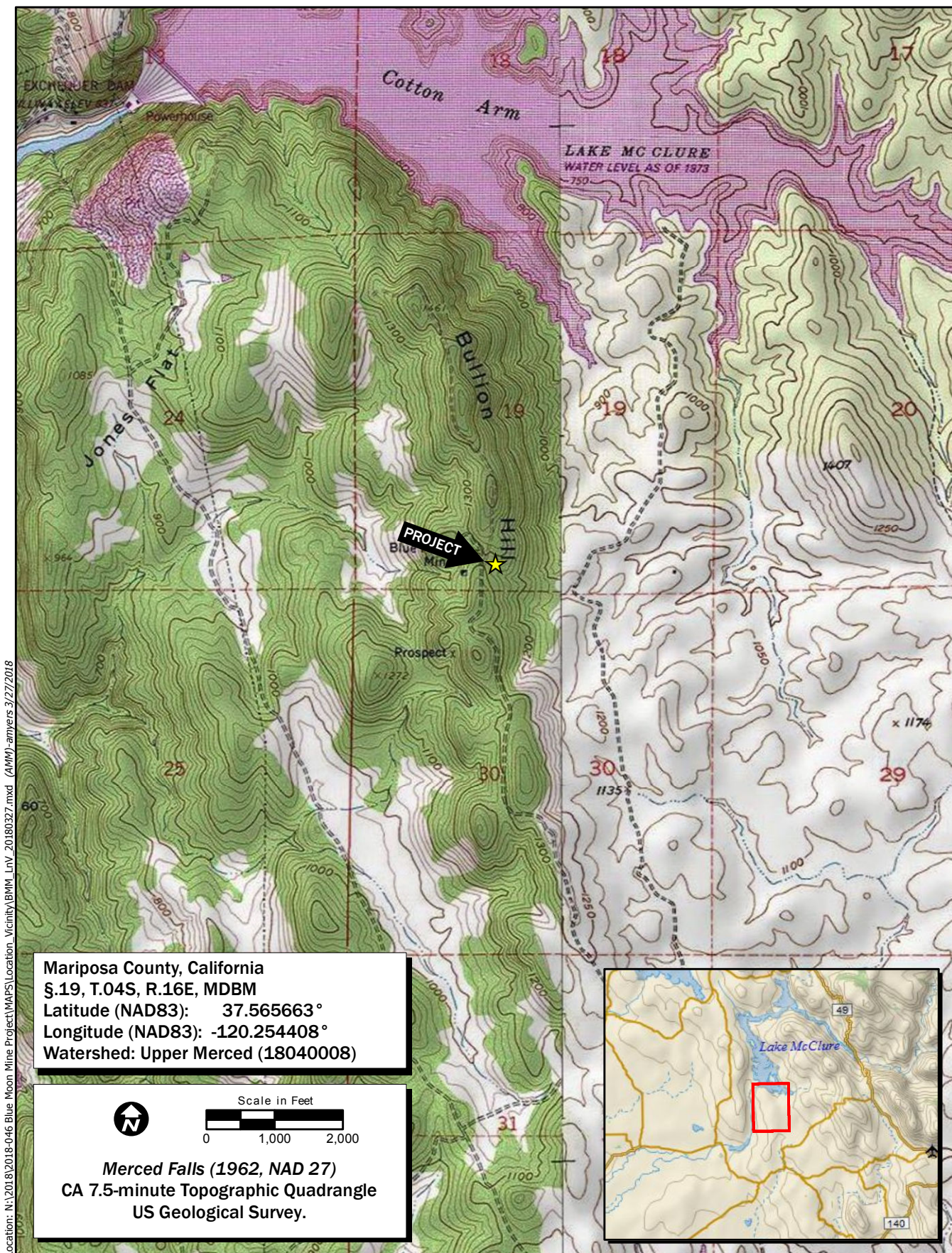
A. SUPPORTING DATA. Data reviewed for JD (check all that apply - checked items shall be included in case file and, where checked and requested, appropriately reference sources below):

- Maps, plans, plots or plat submitted by or on behalf of the applicant/consultant: Figure 1. Project Location and Vicinity, dated March 27, 2018 and Figure 2. Aquatic Resources Assessment Study Areas Blue Moon Mine, dated April 27, 2018.
 Data sheets/report prepared/submitted by or on behalf of the applicant/consultant.
 Office concurs with data sheets/delineation report.
 Office does not concur with data sheets/delineation report.
 Data sheets prepared by the Corps: [Click here to enter text.](#)
 U.S. Geological Survey Hydrologic Atlas: Upper Merced
 USGS NHD data.
 USGS 8 and 12 digit HUC maps.
 U.S. Geological Survey map(s). Cite scale & quad name: Merced Falls
 USDA Natural Resources Conservation Service Soil Survey. Citation: [Click here to enter text.](#)
 National wetlands inventory map(s). Cite name: [Click here to enter text.](#)
 State/Local wetland inventory map(s): [Click here to enter text.](#)
 FEMA/FIRM maps: [Click here to enter text.](#)
 100-year Floodplain Elevation is: [Click here to enter text.](#) (National Geodectic Vertical Datum of 1929)
 Photographs: Aerial (Name & Date): [Click here to enter text.](#)
 or Other (Name & Date): Photos of each drill site, dated March 19, 2018, located in the April 2, 2018, Aquatic Resources Assessment report by ECORP Consulting.
 Previous determination(s). File no. and date of response letter: [Click here to enter text.](#)
 Applicable/supporting case law: [Click here to enter text.](#)
 Applicable/supporting scientific literature: [Click here to enter text.](#)


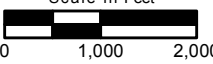
¹ This form is for use only in recording approved JDs involving dry land. It extracts the relevant elements of the longer approved JD form in use since 2007 for aquatic areas and adds no new fields.

Other information (please specify): [Click here to enter text.](#)

B. REQUIRED ADDITIONAL COMMENTS TO SUPPORT JD. EXPLAIN RATIONALE FOR DETERMINATION THAT THE REVIEW AREA ONLY INCLUDES DRY LAND: The approximately 0.71-acre study area includes the three proposed drill sites (DP-1E, DP-2E, DP-3E) and access roads associated with them. The three drill sites occur near the peak of the hill, on the hillslope or in an existing maintained road. The study area is dominated by non-native grasses. No wetland associated plant species (plants with a wetland indicator status of FAC, FACW, or OBL) are dominant within the drill site or its associated access route. The entire 0.71-acre study area is composed of dry land only. No aquatic resources are located within any of the three proposed drill sites and access routes.



Mariposa County, California
 §.19, T.04S, R.16E, MDBM
 Latitude (NAD83): 37.565663°
 Longitude (NAD83): -120.254408°
 Watershed: Upper Merced (18040008)

Merced Falls (1962, NAD 27)
CA 7.5-minute Topographic Quadrangle
US Geological Survey.

Location: N:\2018\2018-046 Blue Moon Mine Project\MAPS\Location_Vicinity\BMM_Lrv_20180327.mxd (AMM)-amylers 3/27/2018

Map Date: 3/27/2018
 iService Layer Credits: Copyright © 2018 Garmin
 Copyright © 2013 National Geographic Society, I-cubed

Figure 1. Project Location and Vicinity



Map Date: 3/27/2018
 Photo Source: ESRI Service Layer Accessed 3-27-2018

Figure 2. Proposed Drill Sites and Access Routes

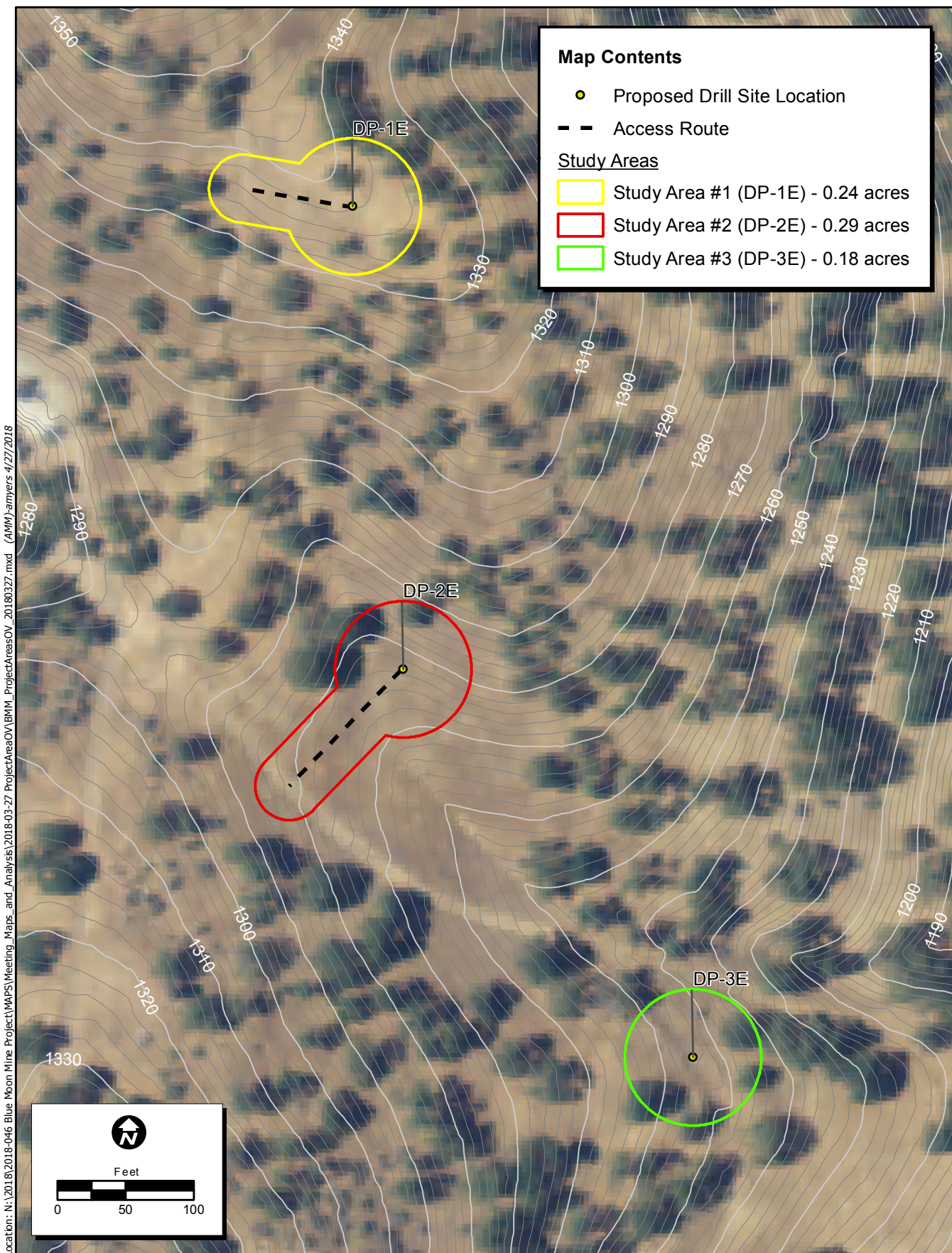


Figure 2. Aquatic Resources Assessment Study Areas