

**APPROVED JURISDICTIONAL DETERMINATION FORM
U.S. Army Corps of Engineers**

SECTION I: BACKGROUND INFORMATION

A. REPORT COMPLETION DATE FOR APPROVED JURISDICTIONAL DETERMINATION (JD): April 18, 2018

B. DISTRICT OFFICE, FILE NAME, AND NUMBER: Sacramento District, 3190 County Road, SPK-2018-00255

C. PROJECT LOCATION AND BACKGROUND INFORMATION:

State: **California** County/parish/borough: **Glenn County** City: **Orland**
Center coordinates of site (lat/long in degree decimal format): Lat. **39.64537°**, Long. **-122.13638°**
Universal Transverse Mercator: **10 574098.5 4388754.28**

Name of nearest waterbody: **Glenn Colusa Canal**

Name of nearest Traditional Navigable Water (TNW) into which the aquatic resource flows: **Glenn-Colusa Canal**

Name of watershed or Hydrologic Unit Code (HUC): **Sacramento-Stone Corral, 18020104**

- Check if map/diagram of review area and/or potential jurisdictional areas is/are available upon request.
 Check if other sites (e.g., offsite mitigation sites, disposal sites, etc...) are associated with this action and are recorded on a different JD form:

D. REVIEW PERFORMED FOR SITE EVALUATION (CHECK ALL THAT APPLY):

- Office (Desk) Determination. Date: **04/16/2018**
 Field Determination. Date(s):

SECTION II: SUMMARY OF FINDINGS

A. RHA SECTION 10 DETERMINATION OF JURISDICTION.

There **are no** "navigable waters of the U.S." within Rivers and Harbors Act (RHA) jurisdiction (as defined by 33 CFR part 329) in the review area. [Required]

- Waters subject to the ebb and flow of the tide.
 Waters are presently used, or have been used in the past, or may be susceptible for use to transport interstate or foreign commerce. Explain:

B. CWA SECTION 404 DETERMINATION OF JURISDICTION.

There **are no** "waters of the U.S." within Clean Water Act (CWA) jurisdiction (as defined by 33 CFR part 328) in the review area. [Required]

1. Waters of the U.S.

a. Indicate presence of waters of U.S. in review area (check all that apply):¹

- TNWs, including territorial seas
 Wetlands adjacent to TNWs
 Relatively permanent waters² (RPWs) that flow directly or indirectly into TNWs
 Non-RPWs that flow directly or indirectly into TNWs
 Wetlands directly abutting RPWs that flow directly or indirectly into TNWs
 Wetlands adjacent to but not directly abutting RPWs that flow directly or indirectly into TNWs
 Wetlands adjacent to non-RPWs that flow directly or indirectly into TNWs
 Impoundments of jurisdictional waters
 Isolated (interstate or intrastate) waters, including isolated wetlands

b. Identify (estimate) size of waters of the U.S. in the review area:

Non-wetland waters: linear feet, wide, and/or acres.
Wetlands: acres.

c. Limits (boundaries) of jurisdiction based on: **Pick List**

Elevation of established OHWM (if known):

¹ Boxes checked below shall be supported by completing the appropriate sections in Section III below.

² For purposes of this form, an RPW is defined as a tributary that is not a TNW and that typically flows year-round or has continuous flow at least "seasonally" (e.g., typically 3 months).

2. **Non-regulated waters/wetlands (check if applicable):**³

- Potentially jurisdictional waters and/or wetlands were assessed within the review area and determined to be not jurisdictional. Explain: **The proposed project site is made up of four parcels and each parcel contains a single man-made, ground water detention basin. The project site contains four basins, each approximately 2-acres in size, which are surrounded by a berm approximately 8-feet high and 35 feet wide at the base. The berms rise above the surrounding agricultural land, which can be seen in the site photographs and required regular maintenance to prevent leaks and deterioration. Their purpose was to act as a heat sink to regulate local temperatures to protect the crops, (wine grapes). Historically, a pump was used to fill the basins with ground water, and there are no culverts or other hydrologic connections into or out of the basins. The pumping of groundwater into the basins has recently ceased, and current hydrology is solely from precipitation. Due to clearing, burning, and agricultural activities, no vegetation exists within the basin, and therefore normal circumstances are not present. All basins contained hydric soils and indicators of hydrology. Because normal circumstances do not exist and the vegetation that previously existed could not be determined, per the 1987 Corps of Engineers Wetland Delineation Manual and 2008 Arid West Regional Supplement, based on the presence of hydric soils and indicators of hydrology, these basins are considered wetlands. Based on current and historic aerial photographs, we have determined the detention basins were constructed in uplands and are isolated, intrastate waters with no interstate or foreign commerce connection and therefore are not jurisdictional.**

SECTION III: CWA ANALYSIS

A. TNWs AND WETLANDS ADJACENT TO TNWs

The agencies will assert jurisdiction over TNWs and wetlands adjacent to TNWs. If the aquatic resource is a TNW, complete Section III.A.1 and Section III.D.1. only; if the aquatic resource is a wetland adjacent to a TNW, complete Sections III.A.1 and 2 and Section III.D.1.; otherwise, see Section III.B below.

1. **TNW**

Identify TNW:

Summarize rationale supporting determination:

2. **Wetland adjacent to TNW**

Summarize rationale supporting conclusion that wetland is "adjacent":

B. CHARACTERISTICS OF TRIBUTARY (THAT IS NOT A TNW) AND ITS ADJACENT WETLANDS (IF ANY):

This section summarizes information regarding characteristics of the tributary and its adjacent wetlands, if any, and it helps determine whether or not the standards for jurisdiction established under *Rapanos* have been met.

The agencies will assert jurisdiction over non-navigable tributaries of TNWs where the tributaries are "relatively permanent waters" (RPWs), i.e. tributaries that typically flow year-round or have continuous flow at least seasonally (e.g., typically 3 months). A wetland that directly abuts an RPW is also jurisdictional. If the aquatic resource is not a TNW, but has year-round (perennial) flow, skip to Section III.D.2. If the aquatic resource is a wetland directly abutting a tributary with perennial flow, skip to Section III.D.4.

A wetland that is adjacent to but that does not directly abut an RPW requires a significant nexus evaluation. Corps districts and EPA regions will include in the record any available information that documents the existence of a significant nexus between a relatively permanent tributary that is not perennial (and its adjacent wetlands if any) and a traditional navigable water, even though a significant nexus finding is not required as a matter of law.

If the waterbody⁴ is not an RPW, or a wetland directly abutting an RPW, a JD will require additional data to determine if the waterbody has a significant nexus with a TNW. If the tributary has adjacent wetlands, the significant nexus evaluation must consider the tributary in combination with all of its adjacent wetlands. This significant nexus evaluation that combines, for analytical purposes, the tributary and all of its adjacent wetlands is used whether the review area identified in the JD request is the tributary, or its adjacent wetlands, or both. If the JD covers a tributary with adjacent wetlands, complete Section III.B.1 for the tributary, Section III.B.2 for any onsite wetlands, and Section III.B.3 for all wetlands adjacent to that tributary, both onsite and offsite. The determination whether a significant nexus exists is determined in Section III.C below.

³ Supporting documentation is presented in Section III.F.

⁴ Note that the Instructional Guidebook contains additional information regarding swales, ditches, washes, and erosional features generally and in the arid West.

1. Characteristics of non-TNWs that flow directly or indirectly into TNW

(i) General Area Conditions:

Watershed size: **Pick List**
Drainage area: **Pick List**
Average annual rainfall: inches
Average annual snowfall: inches

(ii) Physical Characteristics:

(a) Relationship with TNW:

- Tributary flows directly into TNW.
- Tributary flows through **Pick List** tributaries before entering TNW.

Project waters are **Pick List** river miles from TNW.
Project waters are **Pick List** river miles from RPW.
Project waters are **Pick List** aerial (straight) miles from TNW.
Project waters are **Pick List** aerial (straight) miles from RPW.
Project waters cross or serve as state boundaries. Explain:

Identify flow route to TNW⁵:
Tributary stream order, if known:

(b) General Tributary Characteristics (check all that apply):

Tributary is: Natural
 Artificial (man-made). Explain:
 Manipulated (man-altered). Explain:

Tributary properties with respect to top of bank (estimate):

Average width: feet
Average depth: feet
Average side slopes: **Pick List**.

Primary tributary substrate composition (check all that apply):

- Silts
- Sands
- Concrete
- Cobbles
- Gravel
- Muck
- Bedrock
- Vegetation. Type/% cover:
- Other. Explain:

Tributary condition/stability [e.g., highly eroding, sloughing banks]. Explain:
Presence of run/riffle/pool complexes. Explain:
Tributary geometry: **Pick List**
Tributary gradient (approximate average slope): %

(c) Flow:

Tributary provides for: **Pick List**
Estimate average number of flow events in review area/year: **Pick List**
Describe flow regime:
Other information on duration and volume:

Surface flow is: **Pick List**. Characteristics:

Subsurface flow: **Pick List**. Explain findings:
 Dye (or other) test performed:

⁵ Flow route can be described by identifying, e.g., tributary a, which flows through the review area, to flow into tributary b, which then flows into TNW.

Tributary has (check all that apply):

- Bed and banks
 - OHWM⁶ (check all indicators that apply):
 - clear, natural line impressed on the bank
 - changes in the character of soil
 - shelving
 - vegetation matted down, bent, or absent
 - leaf litter disturbed or washed away
 - sediment deposition
 - water staining
 - other (list):
 - Discontinuous OHWM.⁷ Explain:
- the presence of litter and debris
 - destruction of terrestrial vegetation
 - the presence of wrack line
 - sediment sorting
 - scour
 - multiple observed or predicted flow events
 - abrupt change in plant community

If factors other than the OHWM were used to determine lateral extent of CWA jurisdiction (check all that apply):

- High Tide Line indicated by:
 - oil or scum line along shore objects
 - fine shell or debris deposits (foreshore)
 - physical markings/characteristics
 - tidal gauges
 - other (list):
- Mean High Water Mark indicated by:
 - survey to available datum;
 - physical markings;
 - vegetation lines/changes in vegetation types.

(iii) Chemical Characteristics:

Characterize tributary (e.g., water color is clear, discolored, oily film; water quality; general watershed characteristics, etc.). Explain:
Identify specific pollutants, if known:

(iv) Biological Characteristics. Channel supports (check all that apply):

- Riparian corridor. Characteristics (type, average width):
- Wetland fringe. Characteristics:
- Habitat for:
 - Federally Listed species. Explain findings:
 - Fish/spawn areas. Explain findings:
 - Other environmentally-sensitive species. Explain findings:
 - Aquatic/wildlife diversity. Explain findings:

2. Characteristics of wetlands adjacent to non-TNW that flow directly or indirectly into TNW

(i) Physical Characteristics:

(a) General Wetland Characteristics:

Properties:

Wetland size: _____ acres

Wetland type. Explain:

Wetland quality. Explain:

Project wetlands cross or serve as state boundaries. Explain:

(b) General Flow Relationship with Non-TNW:

Flow is: **Pick List**. Explain:

Surface flow is: **Pick List**

Characteristics:

Subsurface flow: **Pick List**. Explain findings:

Dye (or other) test performed:

⁶A natural or man-made discontinuity in the OHWM does not necessarily sever jurisdiction (e.g., where the stream temporarily flows underground, or where the OHWM has been removed by development or agricultural practices). Where there is a break in the OHWM that is unrelated to the waterbody's flow regime (e.g., flow over a rock outcrop or through a culvert), the agencies will look for indicators of flow above and below the break.

⁷Ibid.

(c) Wetland Adjacency Determination with Non-TNW:

- Directly abutting
- Not directly abutting
 - Discrete wetland hydrologic connection. Explain:
 - Ecological connection. Explain:
 - Separated by berm/barrier. Explain:

(d) Proximity (Relationship) to TNW

Project wetlands are **Pick List** river miles from TNW.
 Project waters are **Pick List** aerial (straight) miles from TNW.
 Flow is from: **Pick List**.
 Estimate approximate location of wetland as within the **Pick List** floodplain.

(ii) **Chemical Characteristics:**

Characterize wetland system (e.g., water color is clear, brown, oil film on surface; water quality; general watershed characteristics; etc.). Explain:
 Identify specific pollutants, if known:

(iii) **Biological Characteristics. Wetland supports (check all that apply):**

- Riparian buffer. Characteristics (type, average width):
- Vegetation type/percent cover. Explain:
- Habitat for:
 - Federally Listed species. Explain findings:
 - Fish/spawn areas. Explain findings:
 - Other environmentally-sensitive species. Explain findings:
 - Aquatic/wildlife diversity. Explain findings:

3. **Characteristics of all wetlands adjacent to the tributary (if any)**

All wetland(s) being considered in the cumulative analysis: **Pick List**
 Approximately _____ acres in total are being considered in the cumulative analysis.

For each wetland, specify the following:

<u>Directly abuts? (Y/N)</u>	<u>Size (in acres)</u>	<u>Directly abuts? (Y/N)</u>	<u>Size (in acres)</u>
------------------------------	------------------------	------------------------------	------------------------

Summarize overall biological, chemical and physical functions being performed:

C. SIGNIFICANT NEXUS DETERMINATION

A significant nexus analysis will assess the flow characteristics and functions of the tributary itself and the functions performed by any wetlands adjacent to the tributary to determine if they significantly affect the chemical, physical, and biological integrity of a TNW. For each of the following situations, a significant nexus exists if the tributary, in combination with all of its adjacent wetlands, has more than a speculative or insubstantial effect on the chemical, physical and/or biological integrity of a TNW. Considerations when evaluating significant nexus include, but are not limited to the volume, duration, and frequency of the flow of water in the tributary and its proximity to a TNW, and the functions performed by the tributary and all its adjacent wetlands. It is not appropriate to determine significant nexus based solely on any specific threshold of distance (e.g. between a tributary and its adjacent wetland or between a tributary and the TNW). Similarly, the fact an adjacent wetland lies within or outside of a floodplain is not solely determinative of significant nexus.

Draw connections between the features documented and the effects on the TNW, as identified in the *Rapanos* Guidance and discussed in the Instructional Guidebook. Factors to consider include, for example:

- Does the tributary, in combination with its adjacent wetlands (if any), have the capacity to carry pollutants or flood waters to TNWs, or to reduce the amount of pollutants or flood waters reaching a TNW?
- Does the tributary, in combination with its adjacent wetlands (if any), provide habitat and lifecycle support functions for fish and other species, such as feeding, nesting, spawning, or rearing young for species that are present in the TNW?
- Does the tributary, in combination with its adjacent wetlands (if any), have the capacity to transfer nutrients and organic carbon that support downstream foodwebs?

- Does the tributary, in combination with its adjacent wetlands (if any), have other relationships to the physical, chemical, or biological integrity of the TNW?

Note: the above list of considerations is not inclusive and other functions observed or known to occur should be documented below:

1. **Significant nexus findings for non-RPW that has no adjacent wetlands and flows directly or indirectly into TNWs.** Explain findings of presence or absence of significant nexus below, based on the tributary itself, then go to Section III.D:
2. **Significant nexus findings for non-RPW and its adjacent wetlands, where the non-RPW flows directly or indirectly into TNWs.** Explain findings of presence or absence of significant nexus below, based on the tributary in combination with all of its adjacent wetlands, then go to Section III.D:
3. **Significant nexus findings for wetlands adjacent to an RPW but that do not directly abut the RPW.** Explain findings of presence or absence of significant nexus below, based on the tributary in combination with all of its adjacent wetlands, then go to Section III.D:

D. DETERMINATIONS OF JURISDICTIONAL FINDINGS. THE SUBJECT WATERS/WETLANDS ARE (CHECK ALL THAT APPLY):

1. **TNWs and Adjacent Wetlands.** Check all that apply and provide size estimates in review area:

- TNWs: linear feet, wide, Or acres.
- Wetlands adjacent to TNWs: acres.

2. **RPWs that flow directly or indirectly into TNWs.**

- Tributaries of TNWs where tributaries typically flow year-round are jurisdictional. Provide data and rationale indicating that tributary is perennial:
- Tributaries of TNW where tributaries have continuous flow "seasonally" (e.g., typically three months each year) are jurisdictional. Data supporting this conclusion is provided at Section III.B. Provide rationale indicating that tributary flows seasonally:

Provide estimates for jurisdictional waters in the review area (check all that apply):

- Tributary waters: linear feet wide.
 - Other non-wetland waters: acres.
- Identify type(s) of waters:

3. **Non-RPWs⁸ that flow directly or indirectly into TNWs.**

- Waterbody that is not a TNW or an RPW, but flows directly or indirectly into a TNW, and it has a significant nexus with a TNW is jurisdictional. Data supporting this conclusion is provided at Section III.C.

Provide estimates for jurisdictional waters within the review area (check all that apply):

- Tributary waters: linear feet, wide.
 - Other non-wetland waters: acres.
- Identify type(s) of waters:

4. **Wetlands directly abutting an RPW that flow directly or indirectly into TNWs.**

- Wetlands directly abut RPW and thus are jurisdictional as adjacent wetlands.
 - Wetlands directly abutting an RPW where tributaries typically flow year-round. Provide data and rationale indicating that tributary is perennial in Section III.D.2, above. Provide rationale indicating that wetland is directly abutting an RPW:
 - Wetlands directly abutting an RPW where tributaries typically flow "seasonally." Provide data indicating that tributary is seasonal in Section III.B and rationale in Section III.D.2, above. Provide rationale indicating that wetland is directly abutting an RPW:

Provide acreage estimates for jurisdictional wetlands in the review area: acres.

5. **Wetlands adjacent to but not directly abutting an RPW that flow directly or indirectly into TNWs.**

- Wetlands that do not directly abut an RPW, but when considered in combination with the tributary to which they are adjacent and with similarly situated adjacent wetlands, have a significant nexus with a TNW are jurisdictional. Data supporting this conclusion is provided at Section III.C.

⁸See Footnote # 3.

Provide acreage estimates for jurisdictional wetlands in the review area: _____ acres.

6. Wetlands adjacent to non-RPWs that flow directly or indirectly into TNWs.

- Wetlands adjacent to such waters, and have when considered in combination with the tributary to which they are adjacent and with similarly situated adjacent wetlands, have a significant nexus with a TNW are jurisdictional. Data supporting this conclusion is provided at Section III.C.

Provide estimates for jurisdictional wetlands in the review area: _____ acres.

7. Impoundments of jurisdictional waters.⁹

As a general rule, the impoundment of a jurisdictional tributary remains jurisdictional.

- Demonstrate that impoundment was created from "waters of the U.S.," or
- Demonstrate that water meets the criteria for one of the categories presented above (1-6), or
- Demonstrate that water is isolated with a nexus to commerce (see E below).

E. ISOLATED [INTERSTATE OR INTRA-STATE] WATERS, INCLUDING ISOLATED WETLANDS, THE USE, DEGRADATION OR DESTRUCTION OF WHICH COULD AFFECT INTERSTATE COMMERCE, INCLUDING ANY SUCH WATERS (CHECK ALL THAT APPLY):¹⁰

- which are or could be used by interstate or foreign travelers for recreational or other purposes.
- from which fish or shellfish are or could be taken and sold in interstate or foreign commerce.
- which are or could be used for industrial purposes by industries in interstate commerce.
- Interstate isolated waters. Explain:
- Other factors. Explain:

Identify water body and summarize rationale supporting determination:

Provide estimates for jurisdictional waters in the review area (check all that apply):

- Tributary waters: _____ linear feet, _____ wide.
- Other non-wetland waters: _____ acres.
Identify type(s) of waters:
- Wetlands: _____ acres.

F. NON-JURISDICTIONAL WATERS, INCLUDING WETLANDS (CHECK ALL THAT APPLY):

- If potential wetlands were assessed within the review area, these areas did not meet the criteria in the 1987 Corps of Engineers Wetland Delineation Manual and/or appropriate Regional Supplements.
- Review area included isolated waters with no substantial nexus to interstate (or foreign) commerce.
 - Prior to the Jan 2001 Supreme Court decision in "SWANCC," the review area would have been regulated based solely on the "Migratory Bird Rule" (MBR).
- Waters do not meet the "Significant Nexus" standard, where such a finding is required for jurisdiction. Explain:
- Other: (explain, if not covered above):

Provide acreage estimates for non-jurisdictional waters in the review area, where the sole potential basis of jurisdiction is the MBR factors (i.e., presence of migratory birds, presence of endangered species, use of water for irrigated agriculture), using best professional judgment (check all that apply):

- Non-wetland waters (i.e., rivers, streams): _____ linear feet, _____ wide.
- Lakes/ponds: _____ acres.
- Other non-wetland waters: _____ acres. List type of aquatic resource:
- Wetlands: **8** acres.

Provide acreage estimates for non-jurisdictional waters in the review area that do not meet the "Significant Nexus" standard, where such a finding is required for jurisdiction (check all that apply):

- Non-wetland waters (i.e., rivers, streams): _____ linear feet, _____ wide.
- Lakes/ponds: _____ acres.
- Other non-wetland waters: _____ acres. List type of aquatic resource:
- Wetlands: _____ acres.

⁹ To complete the analysis refer to the key in Section III.D.6 of the Instructional Guidebook.

¹⁰ Prior to asserting or declining CWA jurisdiction based solely on this category, Corps Districts will elevate the action to Corps and EPA HQ for review consistent with the process described in the Corps/EPA Memorandum Regarding CWA Act Jurisdiction Following Rapanos.

SECTION IV: DATA SOURCES.

A. SUPPORTING DATA. Data reviewed for JD (check all that apply - checked items shall be included in case file and, where checked and requested, appropriately reference sources below):

- Maps, plans, plots or plates submitted by or on behalf of the applicant/consultant: **January 23, 2018, "Wetland Delineation Map of the Violich Farms Sutter Home Study Area" prepared by Pacific North Consulting**
- Data sheets prepared/submitted by or on behalf of the applicant/consultant.
 - Office concurs with data sheets/delineation report.
 - Office does not concur with data sheets/delineation report.
- Data sheets prepared by the Corps:
- Corps navigable waters' study:
- U.S. Geological Survey Hydrologic Atlas:
 - USGS NHD data.
 - USGS 8 and 12 digit HUC maps.
- U.S. Geological Survey map(s). Cite scale & quad name: **1:62500, Willows CA Quadrangle, dated 1951; and 1:24000, Orland CA Quadrangle dated 1951, Revised 1978**
- USDA Natural Resources Conservation Service Soil Survey. Citation:
- National wetlands inventory map(s). Cite name:
- State/Local wetland inventory map(s):
- FEMA/FIRM maps:
- 100-year Floodplain Elevation is: (National Geodetic Vertical Datum of 1929)
- Photographs: Aerial (Name & Date): **HistoricAerials.com, imaged dated 1969 and 1998**
or Other (Name & Date): **March and August 2017, site visit photos provided by Pacific North Consulting.**
- Previous determination(s). File no. and date of response letter:
- Applicable/supporting case law:
- Applicable/supporting scientific literature:
- Other information (please specify):

B. ADDITIONAL COMMENTS TO SUPPORT JD: The proposed project site is made up of four parcels and each parcel contains a single man-made, ground water detention basin. The project site contains four basins, each approximately 2-acres in size, which are surrounded by a berm approximately 8-feet high and 35 feet wide at the base. The berms rise above the surrounding agricultural land, which can be seen in the site photographs and required regular maintenance to prevent leaks and deterioration. Their purpose was to act as a heat sink to regulate local temperatures to protect the crops, (wine grapes). Historically, a pump was used to fill the basins with ground water, and there are no culverts or other hydrologic connections into or out of the basins. The pumping of groundwater into the basins has recently ceased, and current hydrology is solely from precipitation. Due to clearing, burning, and agricultural activities, no vegetation exists within the basin, and therefore normal circumstances are not present. All basins contained hydric soils and indicators of hydrology. Because normal circumstances do not exist and the vegetation that previously existed could not be determined, per the 1987 Corps of Engineers Wetland Delineation Manual and 2008 Arid West Regional Supplement, based on the presence of hydric soils and indicators of hydrology, these basins are considered wetlands. Based on current and historic aerial photographs, we have determined the detention basins were constructed in uplands and are isolated, intrastate waters with no interstate or foreign commerce connection and therefore are not jurisdictional.

Attachments:

1. Vicinity Map
2. Wetland Delineation Map
3. Orland Quadrangle, Original 1951, revised 1978
4. Orland Quadrangle 2015
5. Historic Aerials 1947
6. Historic Aerials 1969
7. Historic Aerials 1998
8. Site Photographs March 2017

2. **Non-regulated waters/wetlands (check if applicable):**³

- Potentially jurisdictional waters and/or wetlands were assessed within the review area and determined to be not jurisdictional. Explain: **The proposed project site is made up of four parcels and each parcel contains a single man-made, ground water detention basin. The project site contains four basins, each approximately 2-acres in size, which are surrounded by a berm approximately 8-feet high and 35 feet wide at the base. The berms rise above the surrounding agricultural land, which can be seen in the site photographs and required regular maintenance to prevent leaks and deterioration. Their purpose was to act as a heat sink to regulate local temperatures to protect the crops, (wine grapes). Historically, a pump was used to fill the basins with ground water, and there are no culverts or other hydrologic connections into or out of the basins. The pumping of groundwater into the basins has recently ceased, and current hydrology is solely from precipitation. Due to clearing, burning, and agricultural activities, no vegetation exists within the basin, and therefore normal circumstances are not present. All basins contained hydric soils and indicators of hydrology. Because normal circumstances do not exist and the vegetation that previously existed could not be determined, per the 1987 Corps of Engineers Wetland Delineation Manual and 2008 Arid West Regional Supplement, based on the presence of hydric soils and indicators of hydrology, these basins are considered wetlands. Based on current and historic aerial photographs, we have determined the detention basins were constructed in uplands and are isolated, intrastate waters with no interstate or foreign commerce connection and therefore are not jurisdictional.**

SECTION III: CWA ANALYSIS

A. TNWs AND WETLANDS ADJACENT TO TNWs

The agencies will assert jurisdiction over TNWs and wetlands adjacent to TNWs. If the aquatic resource is a TNW, complete Section III.A.1 and Section III.D.1. only; if the aquatic resource is a wetland adjacent to a TNW, complete Sections III.A.1 and 2 and Section III.D.1.; otherwise, see Section III.B below.

1. TNW

Identify TNW:

Summarize rationale supporting determination:

2. Wetland adjacent to TNW

Summarize rationale supporting conclusion that wetland is "adjacent":

B. CHARACTERISTICS OF TRIBUTARY (THAT IS NOT A TNW) AND ITS ADJACENT WETLANDS (IF ANY):

This section summarizes information regarding characteristics of the tributary and its adjacent wetlands, if any, and it helps determine whether or not the standards for jurisdiction established under *Rapanos* have been met.

The agencies will assert jurisdiction over non-navigable tributaries of TNWs where the tributaries are "relatively permanent waters" (RPWs), i.e. tributaries that typically flow year-round or have continuous flow at least seasonally (e.g., typically 3 months). A wetland that directly abuts an RPW is also jurisdictional. If the aquatic resource is not a TNW, but has year-round (perennial) flow, skip to Section III.D.2. If the aquatic resource is a wetland directly abutting a tributary with perennial flow, skip to Section III.D.4.

A wetland that is adjacent to but that does not directly abut an RPW requires a significant nexus evaluation. Corps districts and EPA regions will include in the record any available information that documents the existence of a significant nexus between a relatively permanent tributary that is not perennial (and its adjacent wetlands if any) and a traditional navigable water, even though a significant nexus finding is not required as a matter of law.

If the waterbody⁴ is not an RPW, or a wetland directly abutting an RPW, a JD will require additional data to determine if the waterbody has a significant nexus with a TNW. If the tributary has adjacent wetlands, the significant nexus evaluation must consider the tributary in combination with all of its adjacent wetlands. This significant nexus evaluation that combines, for analytical purposes, the tributary and all of its adjacent wetlands is used whether the review area identified in the JD request is the tributary, or its adjacent wetlands, or both. If the JD covers a tributary with adjacent wetlands, complete Section III.B.1 for the tributary, Section III.B.2 for any onsite wetlands, and Section III.B.3 for all wetlands adjacent to that tributary, both onsite and offsite. The determination whether a significant nexus exists is determined in Section III.C below.

³ Supporting documentation is presented in Section III.F.

⁴ Note that the Instructional Guidebook contains additional information regarding swales, ditches, washes, and erosional features generally and in the arid West.

1. Characteristics of non-TNWs that flow directly or indirectly into TNW

(i) General Area Conditions:

Watershed size: **Pick List**
Drainage area: **Pick List**
Average annual rainfall: inches
Average annual snowfall: inches

(ii) Physical Characteristics:

(a) Relationship with TNW:

- Tributary flows directly into TNW.
- Tributary flows through **Pick List** tributaries before entering TNW.

Project waters are **Pick List** river miles from TNW.
Project waters are **Pick List** river miles from RPW.
Project waters are **Pick List** aerial (straight) miles from TNW.
Project waters are **Pick List** aerial (straight) miles from RPW.
Project waters cross or serve as state boundaries. Explain:

Identify flow route to TNW⁵:
Tributary stream order, if known:

(b) General Tributary Characteristics (check all that apply):

Tributary is: Natural
 Artificial (man-made). Explain:
 Manipulated (man-altered). Explain:

Tributary properties with respect to top of bank (estimate):

Average width: feet
Average depth: feet
Average side slopes: **Pick List**.

Primary tributary substrate composition (check all that apply):

- Silts
- Sands
- Concrete
- Cobbles
- Gravel
- Muck
- Bedrock
- Vegetation. Type/% cover:
- Other. Explain:

Tributary condition/stability [e.g., highly eroding, sloughing banks]. Explain:
Presence of run/riffle/pool complexes. Explain:
Tributary geometry: **Pick List**
Tributary gradient (approximate average slope): %

(c) Flow:

Tributary provides for: **Pick List**
Estimate average number of flow events in review area/year: **Pick List**
Describe flow regime:
Other information on duration and volume:

Surface flow is: **Pick List**. Characteristics:

Subsurface flow: **Pick List**. Explain findings:
 Dye (or other) test performed:

⁵ Flow route can be described by identifying, e.g., tributary a, which flows through the review area, to flow into tributary b, which then flows into TNW.

Tributary has (check all that apply):

- Bed and banks
 - OHWM⁶ (check all indicators that apply):
 - clear, natural line impressed on the bank
 - changes in the character of soil
 - shelving
 - vegetation matted down, bent, or absent
 - leaf litter disturbed or washed away
 - sediment deposition
 - water staining
 - other (list):
 - Discontinuous OHWM.⁷ Explain:
- the presence of litter and debris
 - destruction of terrestrial vegetation
 - the presence of wrack line
 - sediment sorting
 - scour
 - multiple observed or predicted flow events
 - abrupt change in plant community

If factors other than the OHWM were used to determine lateral extent of CWA jurisdiction (check all that apply):

- High Tide Line indicated by:
 - oil or scum line along shore objects
 - fine shell or debris deposits (foreshore)
 - physical markings/characteristics
 - tidal gauges
 - other (list):
- Mean High Water Mark indicated by:
 - survey to available datum;
 - physical markings;
 - vegetation lines/changes in vegetation types.

(iii) Chemical Characteristics:

Characterize tributary (e.g., water color is clear, discolored, oily film; water quality; general watershed characteristics, etc.). Explain:
Identify specific pollutants, if known:

(iv) Biological Characteristics. Channel supports (check all that apply):

- Riparian corridor. Characteristics (type, average width):
- Wetland fringe. Characteristics:
- Habitat for:
 - Federally Listed species. Explain findings:
 - Fish/spawn areas. Explain findings:
 - Other environmentally-sensitive species. Explain findings:
 - Aquatic/wildlife diversity. Explain findings:

2. Characteristics of wetlands adjacent to non-TNW that flow directly or indirectly into TNW

(i) Physical Characteristics:

(a) General Wetland Characteristics:

Properties:

Wetland size: _____ acres

Wetland type. Explain:

Wetland quality. Explain:

Project wetlands cross or serve as state boundaries. Explain:

(b) General Flow Relationship with Non-TNW:

Flow is: **Pick List**. Explain:

Surface flow is: **Pick List**

Characteristics:

Subsurface flow: **Pick List**. Explain findings:

Dye (or other) test performed:

⁶A natural or man-made discontinuity in the OHWM does not necessarily sever jurisdiction (e.g., where the stream temporarily flows underground, or where the OHWM has been removed by development or agricultural practices). Where there is a break in the OHWM that is unrelated to the waterbody's flow regime (e.g., flow over a rock outcrop or through a culvert), the agencies will look for indicators of flow above and below the break.

⁷Ibid.

(c) Wetland Adjacency Determination with Non-TNW:

- Directly abutting
- Not directly abutting
 - Discrete wetland hydrologic connection. Explain:
 - Ecological connection. Explain:
 - Separated by berm/barrier. Explain:

(d) Proximity (Relationship) to TNW

Project wetlands are **Pick List** river miles from TNW.
 Project waters are **Pick List** aerial (straight) miles from TNW.
 Flow is from: **Pick List**.
 Estimate approximate location of wetland as within the **Pick List** floodplain.

(ii) **Chemical Characteristics:**

Characterize wetland system (e.g., water color is clear, brown, oil film on surface; water quality; general watershed characteristics; etc.). Explain:
 Identify specific pollutants, if known:

(iii) **Biological Characteristics. Wetland supports (check all that apply):**

- Riparian buffer. Characteristics (type, average width):
- Vegetation type/percent cover. Explain:
- Habitat for:
 - Federally Listed species. Explain findings:
 - Fish/spawn areas. Explain findings:
 - Other environmentally-sensitive species. Explain findings:
 - Aquatic/wildlife diversity. Explain findings:

3. **Characteristics of all wetlands adjacent to the tributary (if any)**

All wetland(s) being considered in the cumulative analysis: **Pick List**
 Approximately _____ acres in total are being considered in the cumulative analysis.

For each wetland, specify the following:

<u>Directly abuts? (Y/N)</u>	<u>Size (in acres)</u>	<u>Directly abuts? (Y/N)</u>	<u>Size (in acres)</u>
------------------------------	------------------------	------------------------------	------------------------

Summarize overall biological, chemical and physical functions being performed:

C. SIGNIFICANT NEXUS DETERMINATION

A significant nexus analysis will assess the flow characteristics and functions of the tributary itself and the functions performed by any wetlands adjacent to the tributary to determine if they significantly affect the chemical, physical, and biological integrity of a TNW. For each of the following situations, a significant nexus exists if the tributary, in combination with all of its adjacent wetlands, has more than a speculative or insubstantial effect on the chemical, physical and/or biological integrity of a TNW. Considerations when evaluating significant nexus include, but are not limited to the volume, duration, and frequency of the flow of water in the tributary and its proximity to a TNW, and the functions performed by the tributary and all its adjacent wetlands. It is not appropriate to determine significant nexus based solely on any specific threshold of distance (e.g. between a tributary and its adjacent wetland or between a tributary and the TNW). Similarly, the fact an adjacent wetland lies within or outside of a floodplain is not solely determinative of significant nexus.

Draw connections between the features documented and the effects on the TNW, as identified in the *Rapanos* Guidance and discussed in the Instructional Guidebook. Factors to consider include, for example:

- Does the tributary, in combination with its adjacent wetlands (if any), have the capacity to carry pollutants or flood waters to TNWs, or to reduce the amount of pollutants or flood waters reaching a TNW?
- Does the tributary, in combination with its adjacent wetlands (if any), provide habitat and lifecycle support functions for fish and other species, such as feeding, nesting, spawning, or rearing young for species that are present in the TNW?
- Does the tributary, in combination with its adjacent wetlands (if any), have the capacity to transfer nutrients and organic carbon that support downstream foodwebs?

- Does the tributary, in combination with its adjacent wetlands (if any), have other relationships to the physical, chemical, or biological integrity of the TNW?

Note: the above list of considerations is not inclusive and other functions observed or known to occur should be documented below:

1. **Significant nexus findings for non-RPW that has no adjacent wetlands and flows directly or indirectly into TNWs.** Explain findings of presence or absence of significant nexus below, based on the tributary itself, then go to Section III.D:
2. **Significant nexus findings for non-RPW and its adjacent wetlands, where the non-RPW flows directly or indirectly into TNWs.** Explain findings of presence or absence of significant nexus below, based on the tributary in combination with all of its adjacent wetlands, then go to Section III.D:
3. **Significant nexus findings for wetlands adjacent to an RPW but that do not directly abut the RPW.** Explain findings of presence or absence of significant nexus below, based on the tributary in combination with all of its adjacent wetlands, then go to Section III.D:

D. DETERMINATIONS OF JURISDICTIONAL FINDINGS. THE SUBJECT WATERS/WETLANDS ARE (CHECK ALL THAT APPLY):

1. **TNWs and Adjacent Wetlands.** Check all that apply and provide size estimates in review area:

- TNWs: linear feet, wide, Or acres.
- Wetlands adjacent to TNWs: acres.

2. **RPWs that flow directly or indirectly into TNWs.**

- Tributaries of TNWs where tributaries typically flow year-round are jurisdictional. Provide data and rationale indicating that tributary is perennial:
- Tributaries of TNW where tributaries have continuous flow "seasonally" (e.g., typically three months each year) are jurisdictional. Data supporting this conclusion is provided at Section III.B. Provide rationale indicating that tributary flows seasonally:

Provide estimates for jurisdictional waters in the review area (check all that apply):

- Tributary waters: linear feet wide.
 - Other non-wetland waters: acres.
- Identify type(s) of waters:

3. **Non-RPWs⁸ that flow directly or indirectly into TNWs.**

- Waterbody that is not a TNW or an RPW, but flows directly or indirectly into a TNW, and it has a significant nexus with a TNW is jurisdictional. Data supporting this conclusion is provided at Section III.C.

Provide estimates for jurisdictional waters within the review area (check all that apply):

- Tributary waters: linear feet, wide.
 - Other non-wetland waters: acres.
- Identify type(s) of waters:

4. **Wetlands directly abutting an RPW that flow directly or indirectly into TNWs.**

- Wetlands directly abut RPW and thus are jurisdictional as adjacent wetlands.
 - Wetlands directly abutting an RPW where tributaries typically flow year-round. Provide data and rationale indicating that tributary is perennial in Section III.D.2, above. Provide rationale indicating that wetland is directly abutting an RPW:
 - Wetlands directly abutting an RPW where tributaries typically flow "seasonally." Provide data indicating that tributary is seasonal in Section III.B and rationale in Section III.D.2, above. Provide rationale indicating that wetland is directly abutting an RPW:

Provide acreage estimates for jurisdictional wetlands in the review area: acres.

5. **Wetlands adjacent to but not directly abutting an RPW that flow directly or indirectly into TNWs.**

- Wetlands that do not directly abut an RPW, but when considered in combination with the tributary to which they are adjacent and with similarly situated adjacent wetlands, have a significant nexus with a TNW are jurisdictional. Data supporting this conclusion is provided at Section III.C.

⁸See Footnote # 3.

Provide acreage estimates for jurisdictional wetlands in the review area: _____ acres.

6. Wetlands adjacent to non-RPWs that flow directly or indirectly into TNWs.

- Wetlands adjacent to such waters, and have when considered in combination with the tributary to which they are adjacent and with similarly situated adjacent wetlands, have a significant nexus with a TNW are jurisdictional. Data supporting this conclusion is provided at Section III.C.

Provide estimates for jurisdictional wetlands in the review area: _____ acres.

7. Impoundments of jurisdictional waters.⁹

As a general rule, the impoundment of a jurisdictional tributary remains jurisdictional.

- Demonstrate that impoundment was created from "waters of the U.S.," or
- Demonstrate that water meets the criteria for one of the categories presented above (1-6), or
- Demonstrate that water is isolated with a nexus to commerce (see E below).

E. ISOLATED [INTERSTATE OR INTRA-STATE] WATERS, INCLUDING ISOLATED WETLANDS, THE USE, DEGRADATION OR DESTRUCTION OF WHICH COULD AFFECT INTERSTATE COMMERCE, INCLUDING ANY SUCH WATERS (CHECK ALL THAT APPLY):¹⁰

- which are or could be used by interstate or foreign travelers for recreational or other purposes.
- from which fish or shellfish are or could be taken and sold in interstate or foreign commerce.
- which are or could be used for industrial purposes by industries in interstate commerce.
- Interstate isolated waters. Explain:
- Other factors. Explain:

Identify water body and summarize rationale supporting determination:

Provide estimates for jurisdictional waters in the review area (check all that apply):

- Tributary waters: _____ linear feet, _____ wide.
- Other non-wetland waters: _____ acres.
Identify type(s) of waters:
- Wetlands: _____ acres.

F. NON-JURISDICTIONAL WATERS, INCLUDING WETLANDS (CHECK ALL THAT APPLY):

- If potential wetlands were assessed within the review area, these areas did not meet the criteria in the 1987 Corps of Engineers Wetland Delineation Manual and/or appropriate Regional Supplements.
- Review area included isolated waters with no substantial nexus to interstate (or foreign) commerce.
 - Prior to the Jan 2001 Supreme Court decision in "SWANCC," the review area would have been regulated based solely on the "Migratory Bird Rule" (MBR).
- Waters do not meet the "Significant Nexus" standard, where such a finding is required for jurisdiction. Explain:
- Other: (explain, if not covered above):

Provide acreage estimates for non-jurisdictional waters in the review area, where the sole potential basis of jurisdiction is the MBR factors (i.e., presence of migratory birds, presence of endangered species, use of water for irrigated agriculture), using best professional judgment (check all that apply):

- Non-wetland waters (i.e., rivers, streams): _____ linear feet, _____ wide.
- Lakes/ponds: _____ acres.
- Other non-wetland waters: _____ acres. List type of aquatic resource:
- Wetlands: **8** acres.

Provide acreage estimates for non-jurisdictional waters in the review area that do not meet the "Significant Nexus" standard, where such a finding is required for jurisdiction (check all that apply):

- Non-wetland waters (i.e., rivers, streams): _____ linear feet, _____ wide.
- Lakes/ponds: _____ acres.
- Other non-wetland waters: _____ acres. List type of aquatic resource:
- Wetlands: _____ acres.

⁹ To complete the analysis refer to the key in Section III.D.6 of the Instructional Guidebook.

¹⁰ Prior to asserting or declining CWA jurisdiction based solely on this category, Corps Districts will elevate the action to Corps and EPA HQ for review consistent with the process described in the Corps/EPA Memorandum Regarding CWA Act Jurisdiction Following Rapanos.

SECTION IV: DATA SOURCES.

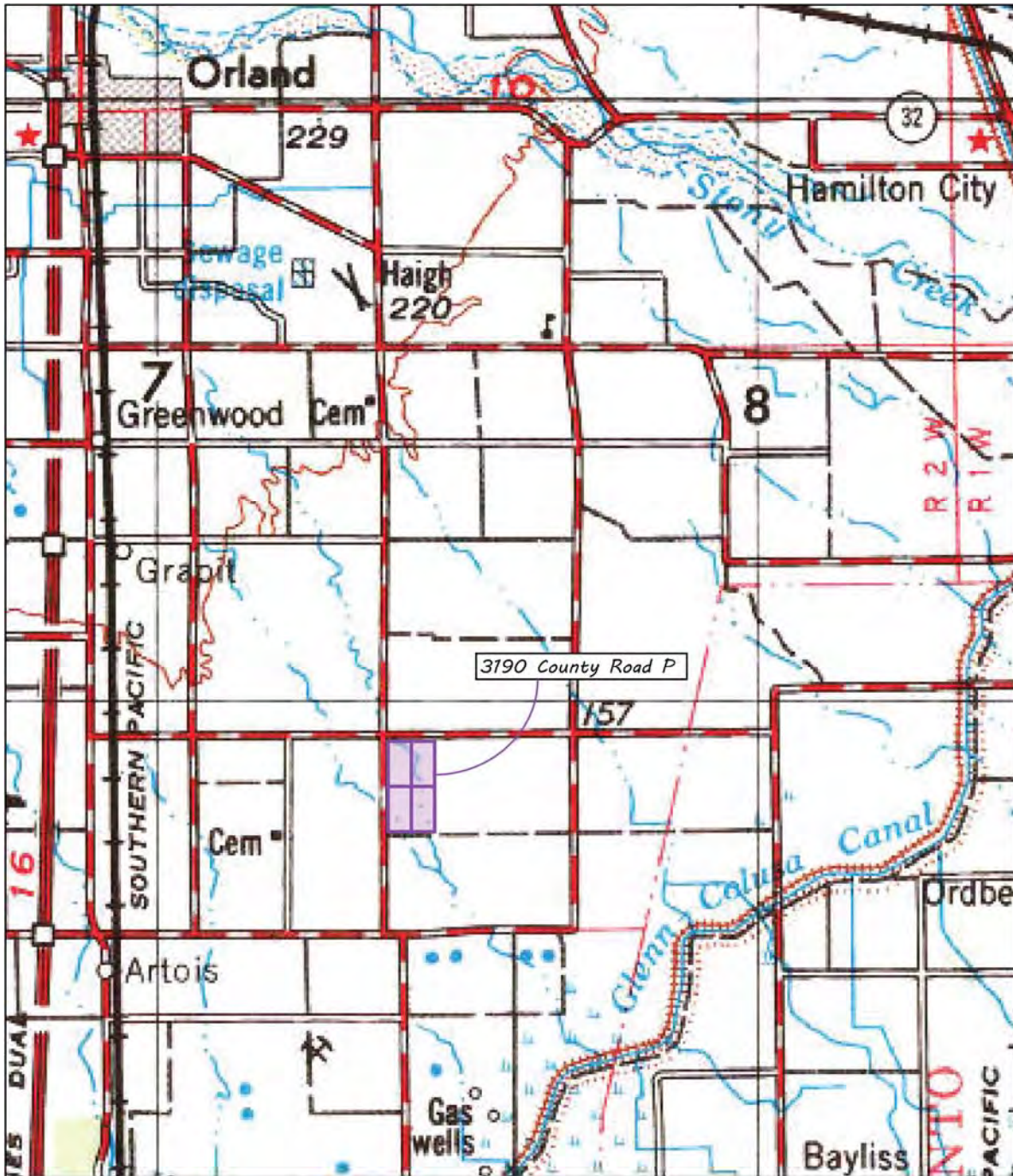
A. SUPPORTING DATA. Data reviewed for JD (check all that apply - checked items shall be included in case file and, where checked and requested, appropriately reference sources below):

- Maps, plans, plots or plates submitted by or on behalf of the applicant/consultant: **January 23, 2018, "Wetland Delineation Map of the Violich Farms Sutter Home Study Area" prepared by Pacific North Consulting**
- Data sheets prepared/submitted by or on behalf of the applicant/consultant.
 - Office concurs with data sheets/delineation report.
 - Office does not concur with data sheets/delineation report.
- Data sheets prepared by the Corps:
- Corps navigable waters' study:
- U.S. Geological Survey Hydrologic Atlas:
 - USGS NHD data.
 - USGS 8 and 12 digit HUC maps.
- U.S. Geological Survey map(s). Cite scale & quad name: **1:62500, Willows CA Quadrangle, dated 1951; and 1:24000, Orland CA Quadrangle dated 1951, Revised 1978**
- USDA Natural Resources Conservation Service Soil Survey. Citation:
- National wetlands inventory map(s). Cite name:
- State/Local wetland inventory map(s):
- FEMA/FIRM maps:
- 100-year Floodplain Elevation is: (National Geodetic Vertical Datum of 1929)
- Photographs: Aerial (Name & Date): **HistoricAerials.com, imaged dated 1969 and 1998**
or Other (Name & Date): **March and August 2017, site visit photos provided by Pacific North Consulting.** Previous determination(s). File no. and date of response letter: Applicable/supporting case law:
- Applicable/supporting scientific literature:
- Other information (please specify):

B. ADDITIONAL COMMENTS TO SUPPORT JD: The proposed project site is made up of four parcels and each parcel contains a single man-made, ground water detention basin. The project site contains four basins, each approximately 2-acres in size, which are surrounded by a berm approximately 8-feet high and 35 feet wide at the base. The berms rise above the surrounding agricultural land, which can be seen in the site photographs and required regular maintenance to prevent leaks and deterioration. Their purpose was to act as a heat sink to regulate local temperatures to protect the crops, (wine grapes). Historically, a pump was used to fill the basins with ground water, and there are no culverts or other hydrologic connections into or out of the basins. The pumping of groundwater into the basins has recently ceased, and current hydrology is solely from precipitation. Due to clearing, burning, and agricultural activities, no vegetation exists within the basin, and therefore normal circumstances are not present. All basins contained hydric soils and indicators of hydrology. Because normal circumstances do not exist and the vegetation that previously existed could not be determined, per the 1987 Corps of Engineers Wetland Delineation Manual and 2008 Arid West Regional Supplement, based on the presence of hydric soils and indicators of hydrology, these basins are considered wetlands. Based on current and historic aerial photographs, we have determined the detention basins were constructed in uplands and are isolated, intrastate waters with no interstate or foreign commerce connection and therefore are not jurisdictional.

Attachments:

1. Vicinity Map
2. Wetland Delineation Map
3. Orland Quadrangle, Original 1951, revised 1978
4. Orland Quadrangle 2015
5. Historic Aerials 1947
6. Historic Aerials 1969
7. Historic Aerials 1998
8. Site Photographs March 2017





<p>Vicinity Map - Sutter Home Site</p>		<p>Prepared by: Pacific North Consulting Prepared for: Violich Farms/Capay Farms Map Date: 10/1/2017 Image Source: USGS publication Ukiah, CA Topo-bathy NJ-10-2 Image Date: 1957 (rev. 1979)</p>	
<p>Project: 201602 Violich Farms "Sutter Home" Site 3190 County Road P, Orland, CA 95963 APNs 026230-010</p>			

Figure 1 – Site Vicinity Map

Wetland Delineation Map of the Violich Farms Sutter Home Study Area

Map Date: January 28, 2018
Image Date: March 17, 2016

Prepared by **Pacific North Consulting**

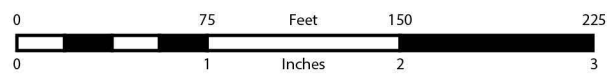
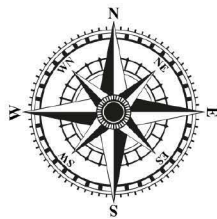
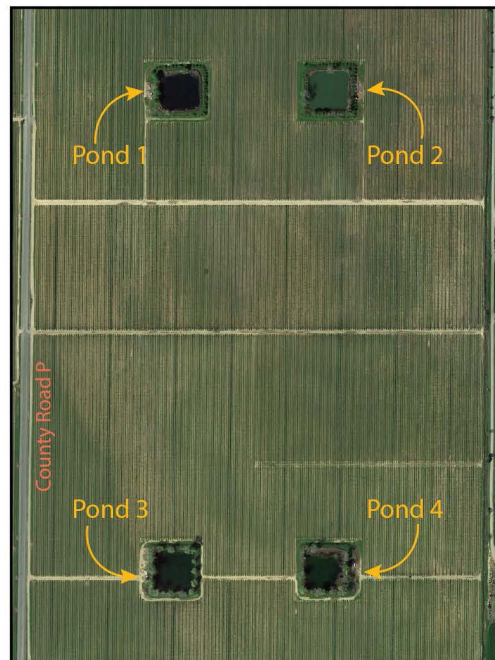


Legend

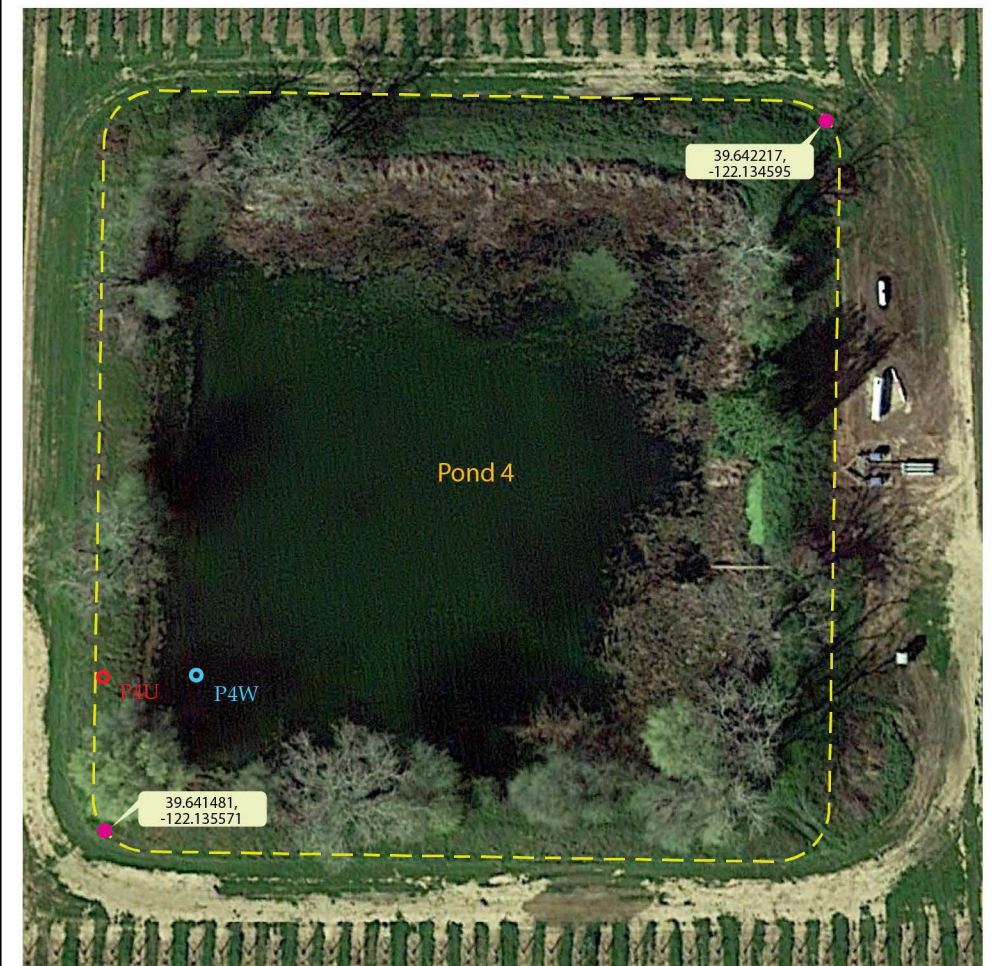
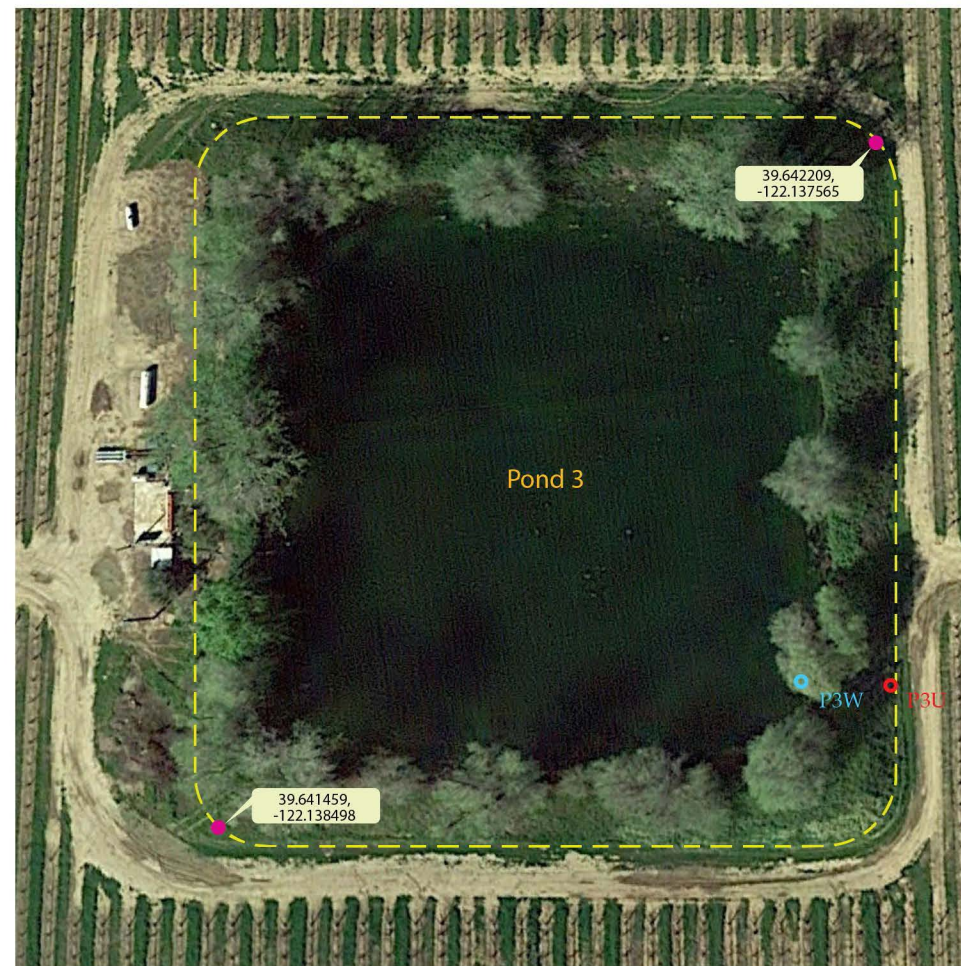
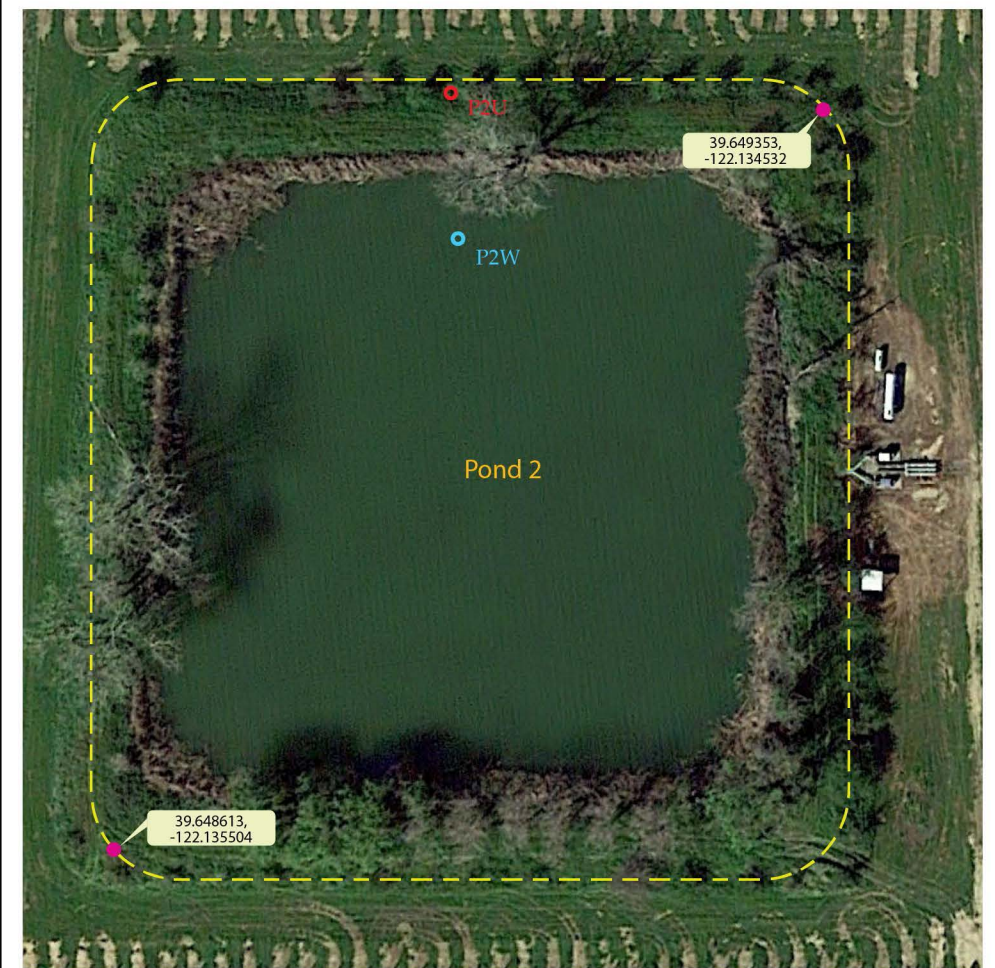
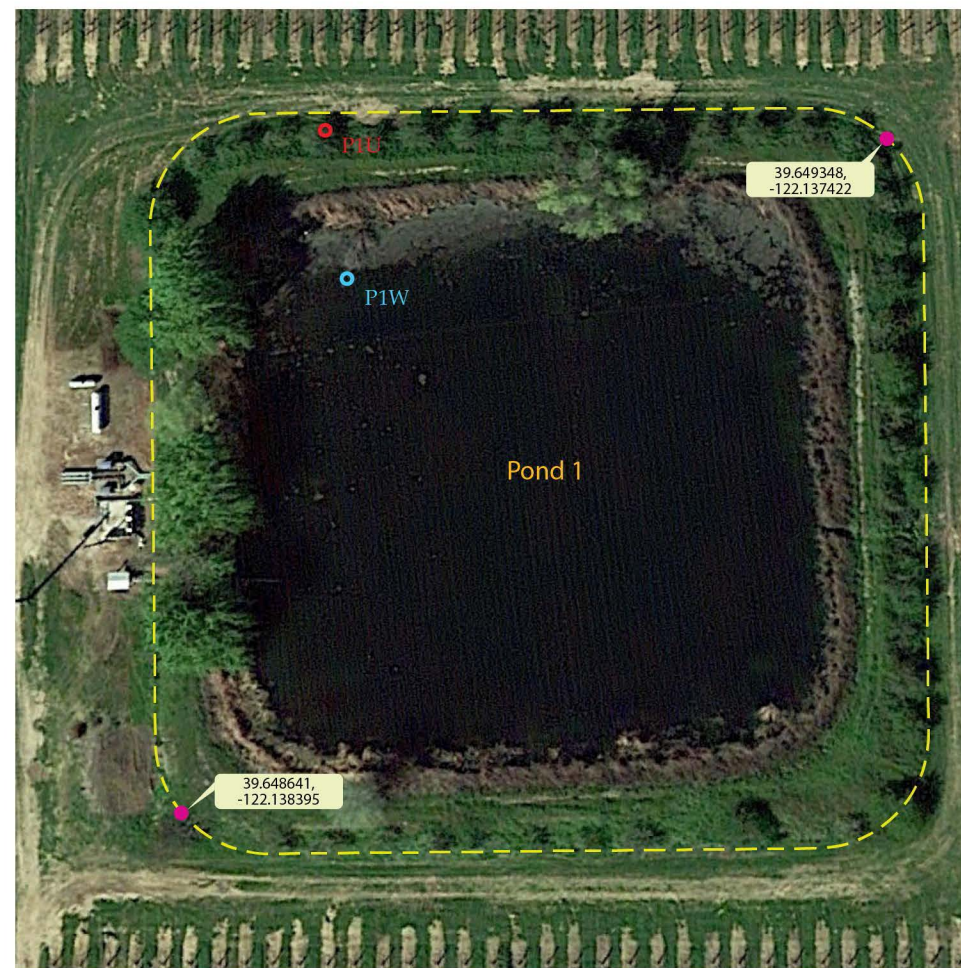
- Study Area Boundary
- Paired Datapoint (wetland or water)
- Paired Datapoint (upland)
- Map Reference Point

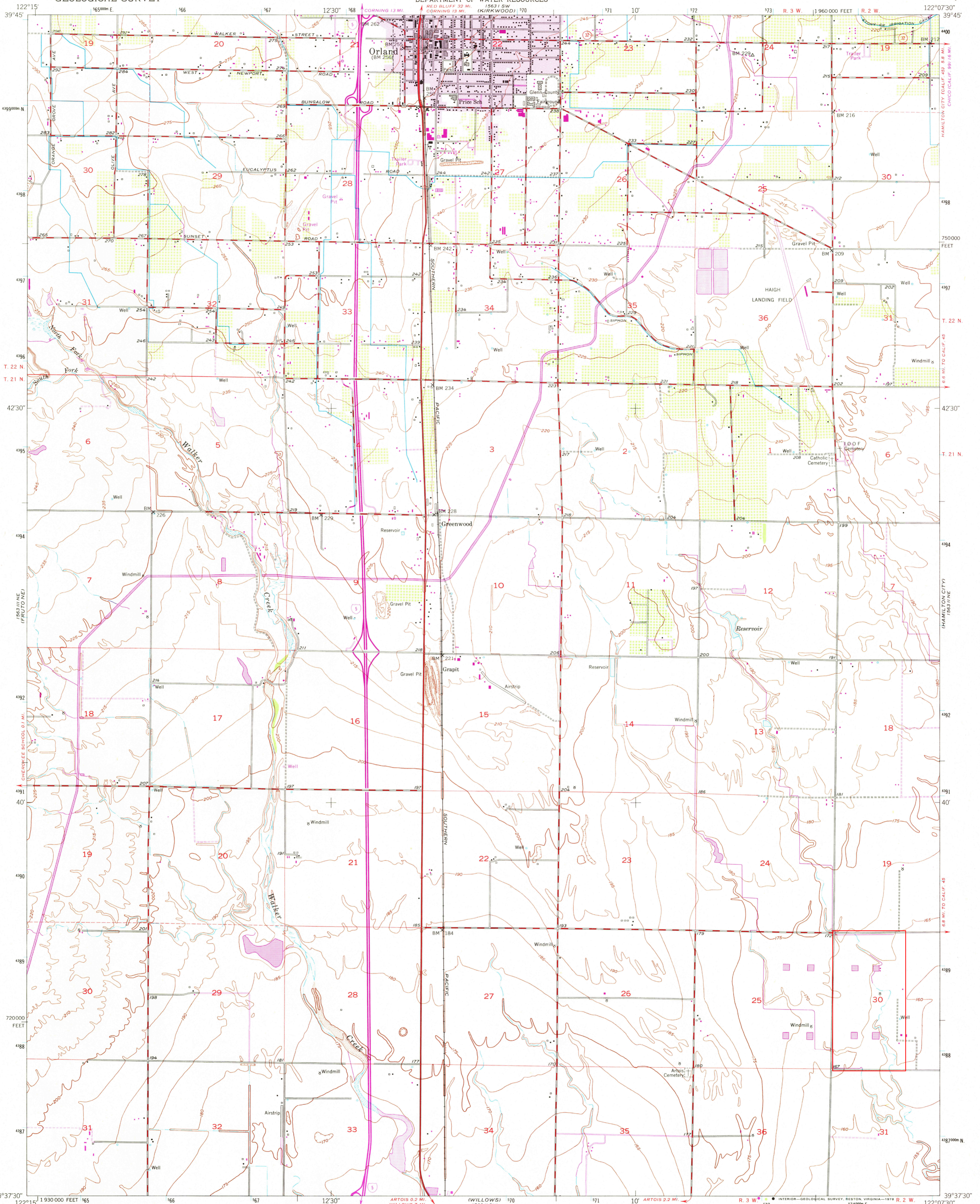
Feature Totals

Wetland/ Other Waters	Feature Type	Feature Label	Feature Extent (acre)
WOTUS*	n/a	n/a	n/a
OWOTUS**	n/a	n/a	n/a

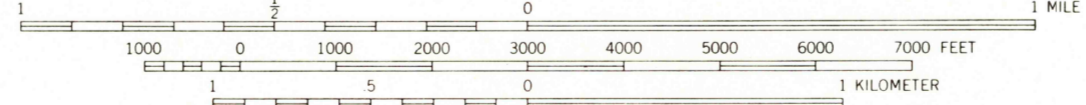
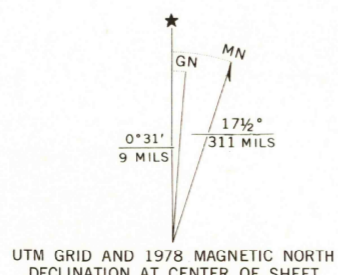


Coordinate System: World Geodetic System 1984 (WGS84)
Imagery Source: DigitalGlobe 2017





Mapped, edited, and published by the Geological Survey
Control by USGS and USC&GS
Mapped 1904, remapped 1951
Culture and drainage by multiplex methods
from aerial photographs taken 1947
Topography by plane-table surveys 1951
Polyconic projection. 1927 North American datum
10,000-foot grid based on California coordinate system, zone 2
Dashed land lines indicate approximate locations
1000-meter Universal Transverse Mercator grid ticks,
zone 10, shown in blue



CONTOUR INTERVAL 5 FEET
NATIONAL GEODETIC VERTICAL DATUM OF 1929

THIS MAP COMPLIES WITH NATIONAL MAP ACCURACY STANDARDS
FOR SALE BY U. S. GEOLOGICAL SURVEY, DENVER, COLORADO 80225, OR RESTON, VIRGINIA 22092
A FOLDER DESCRIBING TOPOGRAPHIC MAPS AND SYMBOLS IS AVAILABLE ON REQUEST

ROAD CLASSIFICATION

Heavy-duty	Light-duty
Medium-duty	Unimproved dirt

U. S. Route State Route
Interstate Route

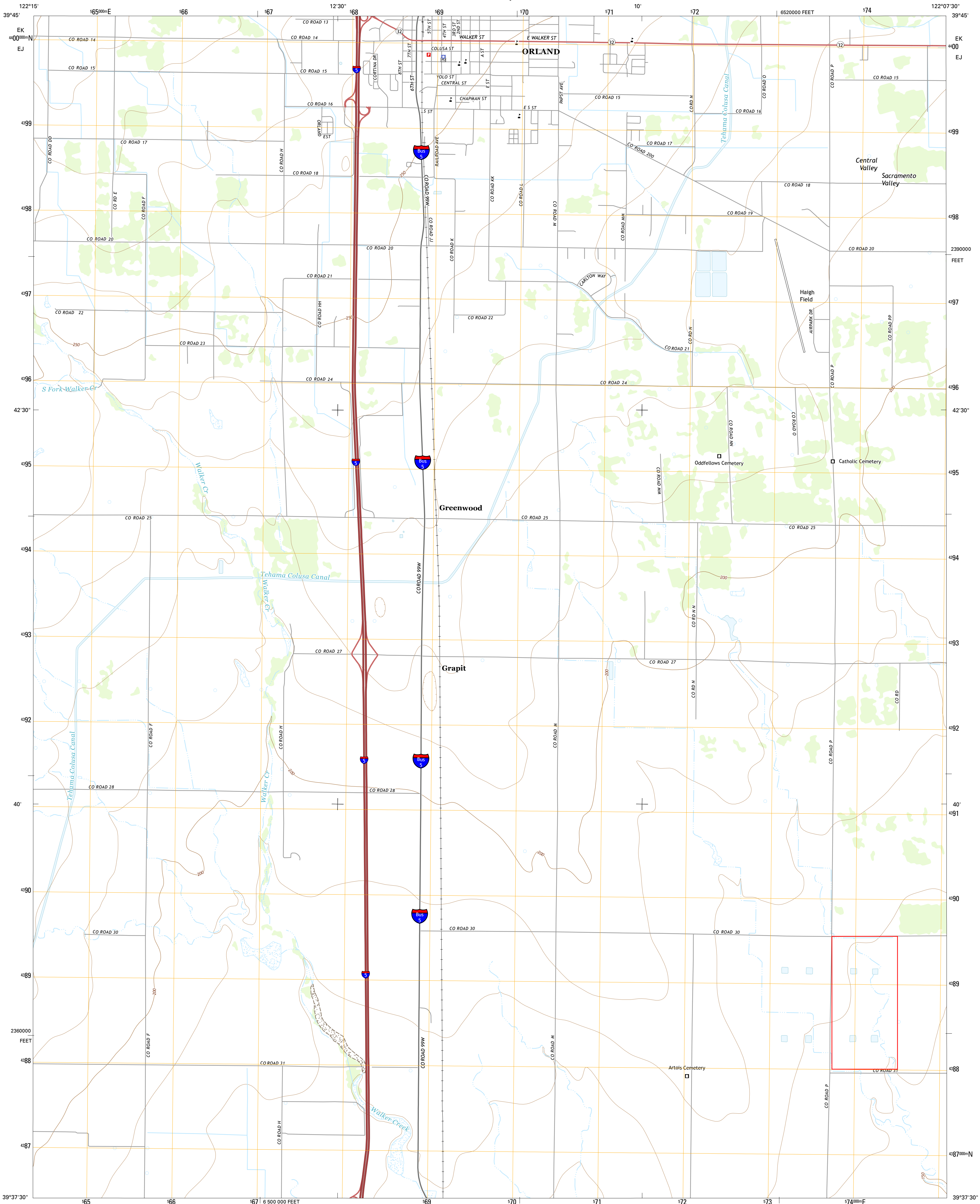
USGS ORLAND, CALIF.
Historical File
Topographic Division N3937.5-W12207.5/7.5

1951
PHOTOREVISED 1978
AMS 1563 II NW-SERIES V995



MAR 14 1979

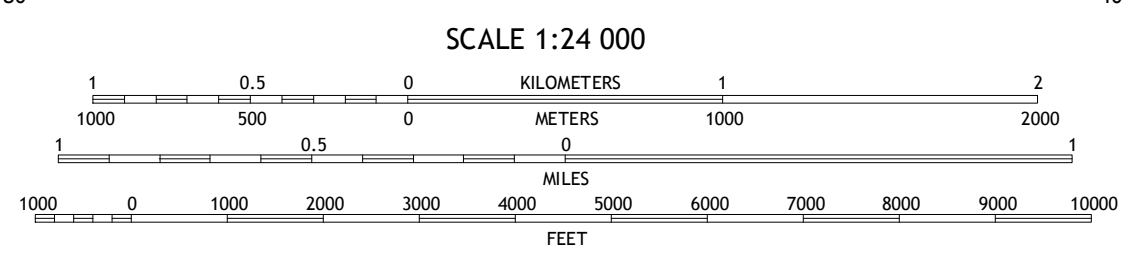
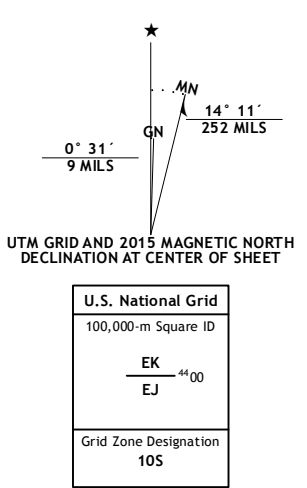
3950



Produced by the United States Geological Survey
North American Datum of 1983 (NAD83)
World Geodetic System of 1984 (WGS84). Projection and
1:000-meter grid: Universal Transverse Mercator, Zone 10S
10 000-foot ticks: California Coordinate System of 1983 (zone 2)

This map is not a legal document. Boundaries may be
generalized for this map scale. Private lands within government
reservations may not be shown. Obtain permission before
entering private lands.

Imagery.....NAIP, July 2012
Roads.....HERE, ©2013 - 2014
Names.....GNIS, 2015
Hydrography.....National Hydrography Dataset, 2012
Contours.....National Elevation Dataset, 2008
Boundaries.....Multiple sources; see metadata file 1972 - 2015
Public Land Survey System.....BLM, 2011



ROAD CLASSIFICATION

Expressway	Local Connector
Secondary Hwy	Local Road
Ramp	4WD
Interstate Route	US Route
	State Route

ADJOINING QUADRANGLES

1	2	3
4	5	6
7	8	

- 1 Black Butte Dam
- 2 Kirkwood
- 3 Foster Island
- 4 Fruto NE
- 5 Hamilton City
- 6 Stone Valley
- 7 Willows
- 8 Glenn

ORLAND, CA
2015



+

39.645225°, -122.136356°



← purchase image and/or print

Aerial

+

map

-

2014

2012

2010

2009

2005

1998

1969

1947

Topo

T1978

T1970

T1963

T1959

T1952

T1914

MATERIAL

COPYRIGHTED MATERIAL

COPYRIGHTED MATERIAL

MATERIAL

COPYRIGHTED MATERIAL

COPYRIGHTED MATERIAL

300 m

1000 ft

+

39.645225°, -122.136356°



← purchase image and/or print

Aerial

+

map

2014

2012

2010

2009

2005

1998

1969

1947

Topo

T1978

T1970

T1963

T1959

T1952

T1914

MATERIAL

COPYRIGHTED MATERIAL

COPYRIGHTED MATERIAL

MATERIAL

COPYRIGHTED MATERIAL

COPYRIGHTED MATERIAL

300 m

1000 ft

+ 39.645225°, -122.136356°



← purchase image and/or print

- Aerial
 - map
 - 2014
 - 2012
 - 2010
 - 2009
 - 2005
 - 1998**
 - 1969
 - 1947
-
- Topo
 - T1978
 - T1970
 - T1963
 - T1959
 - T1952
 - T1914

+
-



300 m
1000 ft



View of the surrounding Agricultural land. - March 2017



View from the top of the berm, at pond 1, while the ponds were being maintained. – March 2017



View from top of berm, pond 1, after ground water pumping was stopped. – August 2017



View from top of berm, pond 2, photograph shows ground water pump used to fill the pond and the height and width of the berm in relation to surrounding agricultural lands. –August 2017