

APPROVED JURISDICTIONAL DETERMINATION FORM
U.S. Army Corps of Engineers

This form should be completed by following the instructions provided in Section IV of the JD Form Instructional Guidebook.

SECTION I: BACKGROUND INFORMATION

A. REPORT COMPLETION DATE FOR APPROVED JURISDICTIONAL DETERMINATION (JD): 3 Oct 2008

B. DISTRICT OFFICE, FILE NAME, AND NUMBER: SPK, St. George Office, Parowan Creek 2007-01171-SG

C. PROJECT LOCATION AND BACKGROUND INFORMATION:

State: Utah County/parish/borough: Iron City: Brianhead
Center coordinates of site (lat/long in degree decimal format): Lat. 37' 47 00"° **N**, Long. -112 48'00"° **W**.
Universal Transverse Mercator:

Name of nearest waterbody: Parowan Creek

Name of nearest Traditional Navigable Water (TNW) into which the aquatic resource flows: N/A

Name of watershed or Hydrologic Unit Code (HUC): 16030006

Check if map/diagram of review area and/or potential jurisdictional areas is/are available upon request.

Check if other sites (e.g., offsite mitigation sites, disposal sites, etc...) are associated with this action and are recorded on a different JD form.

D. REVIEW PERFORMED FOR SITE EVALUATION (CHECK ALL THAT APPLY):

Office (Desk) Determination. Date: 7/16/07

Field Determination. Date(s): 6/18/07

SECTION II: SUMMARY OF FINDINGS

A. RHA SECTION 10 DETERMINATION OF JURISDICTION.

There **Are no** "navigable waters of the U.S." within Rivers and Harbors Act (RHA) jurisdiction (as defined by 33 CFR part 329) in the review area. [Required]

Waters subject to the ebb and flow of the tide.

Waters are presently used, or have been used in the past, or may be susceptible for use to transport interstate or foreign commerce.

Explain: .

B. CWA SECTION 404 DETERMINATION OF JURISDICTION.

There **Are no** "waters of the U.S." within Clean Water Act (CWA) jurisdiction (as defined by 33 CFR part 328) in the review area. [Required]

1. Waters of the U.S.

a. Indicate presence of waters of U.S. in review area (check all that apply):¹

- TNWs, including territorial seas
- Wetlands adjacent to TNWs
- Relatively permanent waters² (RPWs) that flow directly or indirectly into TNWs
- Non-RPWs that flow directly or indirectly into TNWs
- Wetlands directly abutting RPWs that flow directly or indirectly into TNWs
- Wetlands adjacent to but not directly abutting RPWs that flow directly or indirectly into TNWs
- Wetlands adjacent to non-RPWs that flow directly or indirectly into TNWs
- Impoundments of jurisdictional waters
- Isolated (interstate or intrastate) waters, including isolated wetlands

b. Identify (estimate) size of waters of the U.S. in the review area:

Non-wetland waters: linear feet: width (ft) and/or acres.

Wetlands: acres.

c. Limits (boundaries) of jurisdiction based on: **Not Applicable.**

Elevation of established OHWM (if known): .

2. Non-regulated waters/wetlands (check if applicable):³

- Potentially jurisdictional waters and/or wetlands were assessed within the review area and determined to be not jurisdictional. Explain: **The Parowan Creek is an intrastate non-navigable perennial stream that flows approximatley 10 miles from Brian Head, UT. During warmer months Brian Head tourism caters to mountain biking, OHV rentals, hiking, and disc golf recreational opportunities to in state and out of state residents. Of the dozens of water rights granted along the Parowan Creek, there are 6 water rights (attached for review) issued by the State of Utah along the Creek that clearly demonstrate that the Parowan creek is currently used, was used in the past, AND may be susceptible to use in interstate commerce and officially qualifies for a "water of the United States" for such uses as hydro-electric power production, M&I water use for summer homes, recreation community, and sanitation purposes within ski lodge.**

¹ Boxes checked below shall be supported by completing the appropriate sections in Section III below.

² For purposes of this form, an RPW is defined as a tributary that is not a TNW and that typically flows year-round or has continuous flow at least "seasonally" (e.g., typically 3 months).

³ Supporting documentation is presented in Section III.F.

SECTION III: CWA ANALYSIS

A. TNWs AND WETLANDS ADJACENT TO TNWs

The agencies will assert jurisdiction over TNWs and wetlands adjacent to TNWs. If the aquatic resource is a TNW, complete Section III.A.1 and Section III.D.1. only; if the aquatic resource is a wetland adjacent to a TNW, complete Sections III.A.1 and 2 and Section III.D.1.; otherwise, see Section III.B below.

1. TNW

Identify TNW: .

Summarize rationale supporting determination: .

2. Wetland adjacent to TNW

Summarize rationale supporting conclusion that wetland is “adjacent”: .

B. CHARACTERISTICS OF TRIBUTARY (THAT IS NOT A TNW) AND ITS ADJACENT WETLANDS (IF ANY):

This section summarizes information regarding characteristics of the tributary and its adjacent wetlands, if any, and it helps determine whether or not the standards for jurisdiction established under *Rapanos* have been met.

The agencies will assert jurisdiction over non-navigable tributaries of TNWs where the tributaries are “relatively permanent waters” (RPWs), i.e. tributaries that typically flow year-round or have continuous flow at least seasonally (e.g., typically 3 months). A wetland that directly abuts an RPW is also jurisdictional. If the aquatic resource is not a TNW, but has year-round (perennial) flow, skip to Section III.D.2. If the aquatic resource is a wetland directly abutting a tributary with perennial flow, skip to Section III.D.4.

A wetland that is adjacent to but that does not directly abut an RPW requires a significant nexus evaluation. Corps districts and EPA regions will include in the record any available information that documents the existence of a significant nexus between a relatively permanent tributary that is not perennial (and its adjacent wetlands if any) and a traditional navigable water, even though a significant nexus finding is not required as a matter of law.

If the waterbody⁴ is not an RPW, or a wetland directly abutting an RPW, a JD will require additional data to determine if the waterbody has a significant nexus with a TNW. If the tributary has adjacent wetlands, the significant nexus evaluation must consider the tributary in combination with all of its adjacent wetlands. This significant nexus evaluation that combines, for analytical purposes, the tributary and all of its adjacent wetlands is used whether the review area identified in the JD request is the tributary, or its adjacent wetlands, or both. If the JD covers a tributary with adjacent wetlands, complete Section III.B.1 for the tributary, Section III.B.2 for any onsite wetlands, and Section III.B.3 for all wetlands adjacent to that tributary, both onsite and offsite. The determination whether a significant nexus exists is determined in Section III.C below.

1. Characteristics of non-TNWs that flow directly or indirectly into TNW

(i) General Area Conditions:

Watershed size: **Pick List**
Drainage area: **Pick List**
Average annual rainfall: inches
Average annual snowfall: inches

(ii) Physical Characteristics:

(a) Relationship with TNW:

- Tributary flows directly into TNW.
- Tributary flows through **Pick List** tributaries before entering TNW.

Project waters are **Pick List** river miles from TNW.
Project waters are **Pick List** river miles from RPW.
Project waters are **Pick List** aerial (straight) miles from TNW.
Project waters are **Pick List** aerial (straight) miles from RPW.
Project waters cross or serve as state boundaries. Explain: .

Identify flow route to TNW⁵: .
Tributary stream order, if known: .

⁴ Note that the Instructional Guidebook contains additional information regarding swales, ditches, washes, and erosional features generally and in the arid West.

⁵ Flow route can be described by identifying, e.g., tributary a, which flows through the review area, to flow into tributary b, which then flows into TNW.

(b) **General Tributary Characteristics (check all that apply):**

Tributary is: Natural
 Artificial (man-made). Explain:
 Manipulated (man-altered). Explain:

Tributary properties with respect to top of bank (estimate):

Average width: feet
Average depth: feet
Average side slopes: **Pick List**.

Primary tributary substrate composition (check all that apply):

Silts Sands Concrete
 Cobbles Gravel Muck
 Bedrock Vegetation. Type/% cover:
 Other. Explain:

Tributary condition/stability [e.g., highly eroding, sloughing banks]. Explain:

Presence of run/riffle/pool complexes. Explain:

Tributary geometry: Pick List

Tributary gradient (approximate average slope): %

(c) **Flow:**

Tributary provides for: Pick List

Estimate average number of flow events in review area/year: Pick List

Describe flow regime:

Other information on duration and volume:

Surface flow is: Pick List. Characteristics:

Subsurface flow: Pick List. Explain findings:

Dye (or other) test performed:

Tributary has (check all that apply):

Bed and banks
 OHWM⁶ (check all indicators that apply):
 clear, natural line impressed on the bank the presence of litter and debris
 changes in the character of soil destruction of terrestrial vegetation
 shelving the presence of wrack line
 vegetation matted down, bent, or absent sediment sorting
 leaf litter disturbed or washed away scour
 sediment deposition multiple observed or predicted flow events
 water staining abrupt change in plant community
 other (list):
 Discontinuous OHWM.⁷ Explain:

If factors other than the OHWM were used to determine lateral extent of CWA jurisdiction (check all that apply):

High Tide Line indicated by: Mean High Water Mark indicated by:
 oil or scum line along shore objects survey to available datum;
 fine shell or debris deposits (foreshore) physical markings;
 physical markings/characteristics vegetation lines/changes in vegetation types.
 tidal gauges
 other (list):

(iii) **Chemical Characteristics:**

Characterize tributary (e.g., water color is clear, discolored, oily film; water quality; general watershed characteristics, etc.).

Explain:

Identify specific pollutants, if known:

(iv) **Biological Characteristics. Channel supports (check all that apply):**

Riparian corridor. Characteristics (type, average width):

⁶A natural or man-made discontinuity in the OHWM does not necessarily sever jurisdiction (e.g., where the stream temporarily flows underground, or where the OHWM has been removed by development or agricultural practices). Where there is a break in the OHWM that is unrelated to the waterbody's flow regime (e.g., flow over a rock outcrop or through a culvert), the agencies will look for indicators of flow above and below the break.

⁷Ibid.

- Wetland fringe. Characteristics: .
- Habitat for:
 - Federally Listed species. Explain findings: .
 - Fish/spawn areas. Explain findings: .
 - Other environmentally-sensitive species. Explain findings: .
 - Aquatic/wildlife diversity. Explain findings: .

2. Characteristics of wetlands adjacent to non-TNW that flow directly or indirectly into TNW

(i) Physical Characteristics:

(a) General Wetland Characteristics:

Properties:

Wetland size: acres

Wetland type. Explain: .

Wetland quality. Explain: .

Project wetlands cross or serve as state boundaries. Explain: .

(b) General Flow Relationship with Non-TNW:

Flow is: **Pick List**. Explain: .

Surface flow is: **Pick List**

Characteristics: .

Subsurface flow: **Pick List**. Explain findings: .

Dye (or other) test performed: .

(c) Wetland Adjacency Determination with Non-TNW:

Directly abutting

Not directly abutting

Discrete wetland hydrologic connection. Explain: .

Ecological connection. Explain: .

Separated by berm/barrier. Explain: .

(d) Proximity (Relationship) to TNW

Project wetlands are **Pick List** river miles from TNW.

Project waters are **Pick List** aerial (straight) miles from TNW.

Flow is from: **Pick List**.

Estimate approximate location of wetland as within the **Pick List** floodplain.

(ii) Chemical Characteristics:

Characterize wetland system (e.g., water color is clear, brown, oil film on surface; water quality; general watershed characteristics; etc.). Explain: .

Identify specific pollutants, if known: .

(iii) Biological Characteristics. Wetland supports (check all that apply):

Riparian buffer. Characteristics (type, average width): .

Vegetation type/percent cover. Explain: .

Habitat for:

Federally Listed species. Explain findings: .

Fish/spawn areas. Explain findings: .

Other environmentally-sensitive species. Explain findings: .

Aquatic/wildlife diversity. Explain findings: .

3. Characteristics of all wetlands adjacent to the tributary (if any)

All wetland(s) being considered in the cumulative analysis: **Pick List**

Approximately () acres in total are being considered in the cumulative analysis.

For each wetland, specify the following:

Directly abuts? (Y/N)

Size (in acres)

Directly abuts? (Y/N)

Size (in acres)

Summarize overall biological, chemical and physical functions being performed: .

C. SIGNIFICANT NEXUS DETERMINATION

A significant nexus analysis will assess the flow characteristics and functions of the tributary itself and the functions performed by any wetlands adjacent to the tributary to determine if they significantly affect the chemical, physical, and biological integrity of a TNW. For each of the following situations, a significant nexus exists if the tributary, in combination with all of its adjacent wetlands, has more than a speculative or insubstantial effect on the chemical, physical and/or biological integrity of a TNW. Considerations when evaluating significant nexus include, but are not limited to the volume, duration, and frequency of the flow of water in the tributary and its proximity to a TNW, and the functions performed by the tributary and all its adjacent wetlands. It is not appropriate to determine significant nexus based solely on any specific threshold of distance (e.g. between a tributary and its adjacent wetland or between a tributary and the TNW). Similarly, the fact an adjacent wetland lies within or outside of a floodplain is not solely determinative of significant nexus.

Draw connections between the features documented and the effects on the TNW, as identified in the *Rapanos* Guidance and discussed in the Instructional Guidebook. Factors to consider include, for example:

- Does the tributary, in combination with its adjacent wetlands (if any), have the capacity to carry pollutants or flood waters to TNWs, or to reduce the amount of pollutants or flood waters reaching a TNW?
- Does the tributary, in combination with its adjacent wetlands (if any), provide habitat and lifecycle support functions for fish and other species, such as feeding, nesting, spawning, or rearing young for species that are present in the TNW?
- Does the tributary, in combination with its adjacent wetlands (if any), have the capacity to transfer nutrients and organic carbon that support downstream food webs?
- Does the tributary, in combination with its adjacent wetlands (if any), have other relationships to the physical, chemical, or biological integrity of the TNW?

Note: the above list of considerations is not inclusive and other functions observed or known to occur should be documented below:

1. **Significant nexus findings for non-RPW that has no adjacent wetlands and flows directly or indirectly into TNWs.** Explain findings of presence or absence of significant nexus below, based on the tributary itself, then go to Section III.D: .
2. **Significant nexus findings for non-RPW and its adjacent wetlands, where the non-RPW flows directly or indirectly into TNWs.** Explain findings of presence or absence of significant nexus below, based on the tributary in combination with all of its adjacent wetlands, then go to Section III.D: .
3. **Significant nexus findings for wetlands adjacent to an RPW but that do not directly abut the RPW.** Explain findings of presence or absence of significant nexus below, based on the tributary in combination with all of its adjacent wetlands, then go to Section III.D: .

D. DETERMINATIONS OF JURISDICTIONAL FINDINGS. THE SUBJECT WATERS/WETLANDS ARE (CHECK ALL THAT APPLY):

1. **TNWs and Adjacent Wetlands.** Check all that apply and provide size estimates in review area:

- TNWs: linear feet width (ft), Or, acres.
- Wetlands adjacent to TNWs: acres.

2. **RPWs that flow directly or indirectly into TNWs.**

- Tributaries of TNWs where tributaries typically flow year-round are jurisdictional. Provide data and rationale indicating that tributary is perennial: .
- Tributaries of TNW where tributaries have continuous flow “seasonally” (e.g., typically three months each year) are jurisdictional. Data supporting this conclusion is provided at Section III.B. Provide rationale indicating that tributary flows seasonally: .

Provide estimates for jurisdictional waters in the review area (check all that apply):

- Tributary waters: linear feet width (ft).
- Other non-wetland waters: acres.

Identify type(s) of waters: .

3. **Non-RPWs⁸ that flow directly or indirectly into TNWs.**

- Waterbody that is not a TNW or an RPW, but flows directly or indirectly into a TNW, and it has a significant nexus with a TNW is jurisdictional. Data supporting this conclusion is provided at Section III.C.

⁸See Footnote # 3.

Provide estimates for jurisdictional waters within the review area (check all that apply):

- Tributary waters: linear feet width (ft).
 - Other non-wetland waters: acres.
- Identify type(s) of waters: .

4. Wetlands directly abutting an RPW that flow directly or indirectly into TNWs.

- Wetlands directly abut RPW and thus are jurisdictional as adjacent wetlands.
 - Wetlands directly abutting an RPW where tributaries typically flow year-round. Provide data and rationale indicating that tributary is perennial in Section III.D.2, above. Provide rationale indicating that wetland is directly abutting an RPW: .
 - Wetlands directly abutting an RPW where tributaries typically flow “seasonally.” Provide data indicating that tributary is seasonal in Section III.B and rationale in Section III.D.2, above. Provide rationale indicating that wetland is directly abutting an RPW: .

Provide acreage estimates for jurisdictional wetlands in the review area: acres.

5. Wetlands adjacent to but not directly abutting an RPW that flow directly or indirectly into TNWs.

- Wetlands that do not directly abut an RPW, but when considered in combination with the tributary to which they are adjacent and with similarly situated adjacent wetlands, have a significant nexus with a TNW are jurisdictional. Data supporting this conclusion is provided at Section III.C.

Provide acreage estimates for jurisdictional wetlands in the review area: acres.

6. Wetlands adjacent to non-RPWs that flow directly or indirectly into TNWs.

- Wetlands adjacent to such waters, and have when considered in combination with the tributary to which they are adjacent and with similarly situated adjacent wetlands, have a significant nexus with a TNW are jurisdictional. Data supporting this conclusion is provided at Section III.C.

Provide estimates for jurisdictional wetlands in the review area: acres.

7. Impoundments of jurisdictional waters.⁹

As a general rule, the impoundment of a jurisdictional tributary remains jurisdictional.

- Demonstrate that impoundment was created from “waters of the U.S.,” or
- Demonstrate that water meets the criteria for one of the categories presented above (1-6), or
- Demonstrate that water is isolated with a nexus to commerce (see E below).

E. ISOLATED [INTERSTATE OR INTRA-STATE] WATERS, INCLUDING ISOLATED WETLANDS, THE USE, DEGRADATION OR DESTRUCTION OF WHICH COULD AFFECT INTERSTATE COMMERCE, INCLUDING ANY SUCH WATERS (CHECK ALL THAT APPLY):¹⁰

- which are or could be used by interstate or foreign travelers for recreational or other purposes.
- from which fish or shellfish are or could be taken and sold in interstate or foreign commerce.
- which are or could be used for industrial purposes by industries in interstate commerce.
- Interstate isolated waters. Explain: .
- Other factors. Explain: .

Identify water body and summarize rationale supporting determination:

Provide estimates for jurisdictional waters in the review area (check all that apply):

- Tributary waters: 5900 linear feet 20 width (ft).
 - Other non-wetland waters: acres.
- Identify type(s) of waters: .
- Wetlands:

F. NON-JURISDICTIONAL WATERS, INCLUDING WETLANDS (CHECK ALL THAT APPLY):

- If potential wetlands were assessed within the review area, these areas did not meet the criteria in the 1987 Corps of Engineers Wetland Delineation Manual and/or appropriate Regional Supplements.

⁹ To complete the analysis refer to the key in Section III.D.6 of the Instructional Guidebook.

¹⁰ Prior to asserting or declining CWA jurisdiction based solely on this category, Corps Districts will elevate the action to Corps and EPA HQ for review consistent with the process described in the Corps/EPA Memorandum Regarding CWA Act Jurisdiction Following Rapanos.

- Review area included isolated waters with no substantial nexus to interstate (or foreign) commerce.
 - Prior to the Jan 2001 Supreme Court decision in "SWANCC," the review area would have been regulated based solely on the "Migratory Bird Rule" (MBR).

Waters do not meet the "Significant Nexus" standard, where such a finding is required for jurisdiction. Explain: .

Other: (explain, if not covered above): **USACE Headquarters declined to assert jurisdiction under 33 CFR Part 328.3 (a)(3) in an email dated June 19, 2008 (see MFR below).**

Provide acreage estimates for non-jurisdictional waters in the review area, where the sole potential basis of jurisdiction is the MBR factors (i.e., presence of migratory birds, presence of endangered species, use of water for irrigated agriculture), using best professional judgment (check all that apply):

- Non-wetland waters (i.e., rivers, streams): linear feet width (ft).
- Lakes/ponds: acres.
- Other non-wetland waters: acres. List type of aquatic resource: .
- Wetlands: acres.

Provide acreage estimates for non-jurisdictional waters in the review area that do not meet the "Significant Nexus" standard, where such a finding is required for jurisdiction (check all that apply):

- Non-wetland waters (i.e., rivers, streams): linear feet, width (ft).
- Lakes/ponds: acres.
- Other non-wetland waters: acres. List type of aquatic resource: .
- Wetlands: acres.

SECTION IV: DATA SOURCES.

A. SUPPORTING DATA. Data reviewed for JD (check all that apply - checked items shall be included in case file and, where checked and requested, appropriately reference sources below):

- Maps, plans, plots or plat submitted by or on behalf of the applicant/consultant: .
- Data sheets prepared/submitted by or on behalf of the applicant/consultant.
 - Office concurs with data sheets/delineation report.
 - Office does not concur with data sheets/delineation report.
- Data sheets prepared by the Corps: .
- Corps navigable waters' study: .
- U.S. Geological Survey Hydrologic Atlas: .
 - USGS NHD data.
 - USGS 8 and 12 digit HUC maps.
- U.S. Geological Survey map(s). Cite scale & quad name: .
- USDA Natural Resources Conservation Service Soil Survey. Citation: .
- National wetlands inventory map(s). Cite name: .
- State/Local wetland inventory map(s): .
- FEMA/FIRM maps: .
- 100-year Floodplain Elevation is: (National Geodetic Vertical Datum of 1929)
- Photographs: Aerial (Name & Date): .
or Other (Name & Date): .
- Previous determination(s). File no. and date of response letter: 200450267, July 19, 2004.
- Applicable/supporting case law: .
- Applicable/supporting scientific literature: .
- Other information (please specify): Utah Division of Water Rights website searched for aboveground points of diversion <http://www.waterrights.utah.gov/>. Several pre-apps have occurred along the Parowan Creek from Brian Head to Parowan.

Parowan City Utah Center Creek Hydroelectric Project

DEPARTMENT OF ENERGY

Federal Energy Regulatory Commission

Parowan City Utah; Notice of Availability of

Draft Environmental Assessment

August 26, 2003. http://www.govnotes.com/Environmental_Assessment/_Parowan_City_Utah_Center_Creek_Hydroelectric.htm .

B. ADDITIONAL COMMENTS TO SUPPORT JD: The Parowan Creek is an intrastate non-navigable perennial stream that flows approximately 10 miles from Brian Head, UT (elevation 9,700 feet) to Parowan, UT (elevation 5,900 feet). As of the census of 2000, there were 118 people, 55 households, 33 families and 912 housing units in the town of Brian Head. The population in Parowan, UT was 2,565 at the 2000 census and the city contained 893 households, 682 families and there were 1,230 housing units. Brian Head, UT is currently facing growth and development at an unprecedented rate and the city of Parowan is experiencing lesser but moderate growth and development.

Surface water in Parowan Creek derives mostly from springs, rainfall and snowmelt runoff. Snow is the dominant form of precipitation in the subbasin from October through April. Average total annual precipitation in the subbasin varies by elevation and temperature

ranging from 12.4 inches at the project powerhouse (6,000 feet) in the hot and arid, lowest portion of the subbasin to 35.8 inches near Brian Head Station in the cooler and wetter, upper portion of the subbasin. Parowan calculates the average total annual precipitation at the diversion dam to be about 30.4 inches. Parowan Creek upstream of the project diversion dam contains a self-sustaining population of rainbow trout and brown trout; however, there are no known fish populations downstream of the project diversion dam. (letter by Willie R. Taylor, Director, Office of Environmental Policy and Compliance, USFWS, Washington, DC, July 1, 2003). There are numerous springs in the project area fed by snowmelt originating in the upper subbasin. Additionally, the Parowan Creek bed is largely gravel and green vegetation carpets the landscape on both sides of the creek indicating that there is some sub-surface flow through the alluvium.

Because of its proximity to Arizona and Nevada, the City of Brian Head is strongly supported by its' tourism industry that caters to out of state tourism by offering lodging, restaurants, snow skiing and snow mobiling in the winter. During warmer months Brian Head tourism caters to mountain biking, OHV rentals, hiking, and disc golf recreational opportunities to in state and out of state residents. Of the dozens of water rights granted along the Parowan Creek, there are 6 water rights (attached for review) issued by the State of Utah along the Creek that clearly demonstrate that the Parowan creek is currently used, was used in the past, AND may be susceptible to use in interstate commerce and officially qualifies for a "water of the United States" (33CFR 328.3(a). Water Right 75-1514 also indicates water rights allocated for a ski lodge industry use and summer homes that also cater to interstate residents. Another strong example of using the Parowan Creek for the purposes of interstate commerce is the diversion of up to 24 cfs by the city of Parowan for the operation of a 600 KW hydroelectric plant along the Creek (Table 1) that provides power to industry within the town of Parowan. Other water rights from the creek are allocated for stockwatering for over 6,500 head of cattle, many of which are transported across state lines for sale. There are also water rights from the creek used for the irrigation of 13,273 acres for the alfalfa agriculture industry

The jurisdictional boundaries of the Parowan Creek begin in its headwaters in Brian Head, UT and flow approximately 10 miles downstream to the final diversion of perennial flow in the City of Parowan. Adjacent wetlands do occur throughout the length of the Parowan Creek and support migratory bird habitat as originally documented by the previous Office Chief of St. George.

A series of labeled photographs (Sep 18, 2007) are included to document the characteristics of Parowan Creek and its adjacent wetlands beginning at its headwaters in Brian Head Utah, and terminating at an agricultural (alfalfa production) diversion in Parowan, Utah.

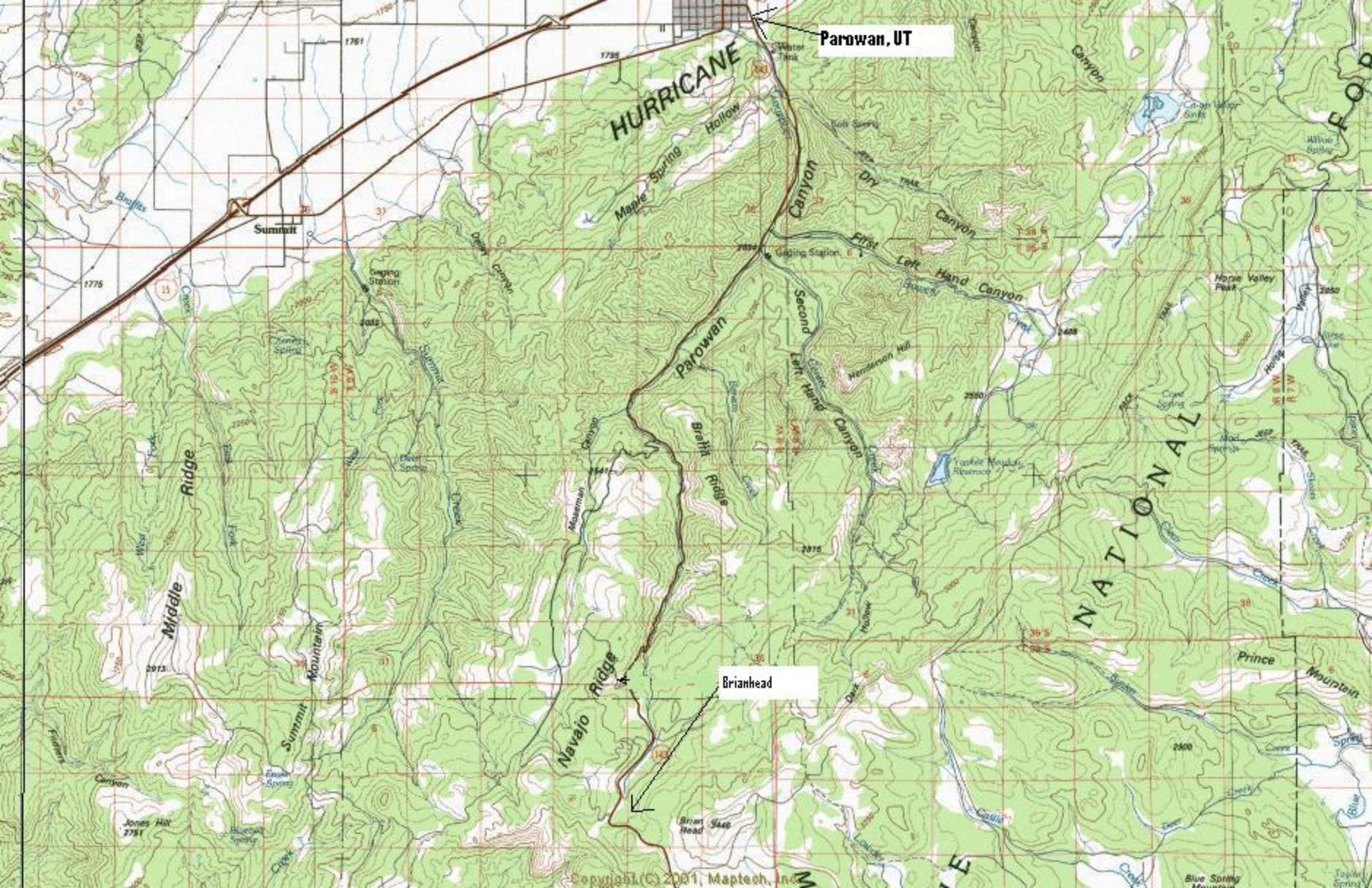
Based on familiarity with the Creek and review of the NWI mapping in ORM 2, I would approximate 5 acres of abutting wetlands per mile. Wetlands are more prevalent upstream in the Brian Head area than downstream towards Parowan, UT. = Approximately 25 acres.

CECW-OR

MEMORANDUM FOR RECORD

SUBJECT: Declination of Jurisdictional Determination 2007-01171-SG [Parowan Creek]

1. In accordance with the 2007 Memorandum, Coordination on Jurisdictional Determinations (JDs) under Clean Water Act (CWA) Section 404 in Light of the Rapanos and SWANCC Supreme Court Decisions, Sacramento District has requested formal Headquarters approval of a proposed Clean Water Act jurisdictional assertion over Parowan Creek (located in southern Utah), based solely on links to interstate commerce as provided under 40 CFR 230.3(s) and 33 CFR 328.3(a)(3).
2. EPA and Corps staff representing both program and counsel offices have reviewed available data on Parowan Creek, and we decline to grant approval for the assertion of, and have determined that there is an insufficient basis for asserting Clean Water Act jurisdiction over the creek described in the Sacramento District memo, dated 04 October 2007. The District indicated that the creek in question is isolated, non-navigable and not adjacent to any water of the United States, and that the sole prospective basis for asserting jurisdiction was the actual or potential use of this area by interstate commerce, as defined in 33 CFR 328.3(a)(3). Based on a review of the information provided to headquarters, the Corps and EPA jointly concluded that the information used to support jurisdiction under 33 CFR 328.3(a)(3) is not sufficient.
3. Although we decline to grant the requested approval to assert jurisdiction over Parowan Creek, we emphasize to the District that this is a case-specific



Parowan, UT

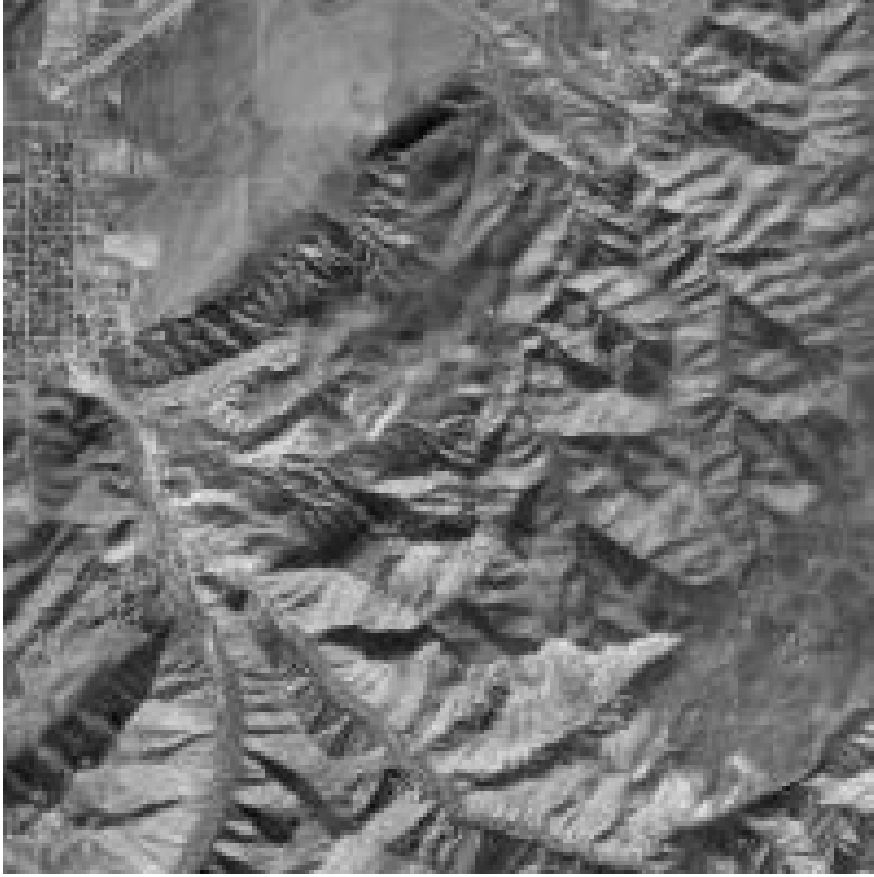
Brianhead

HURRICANE

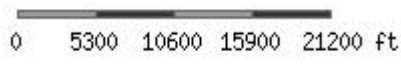
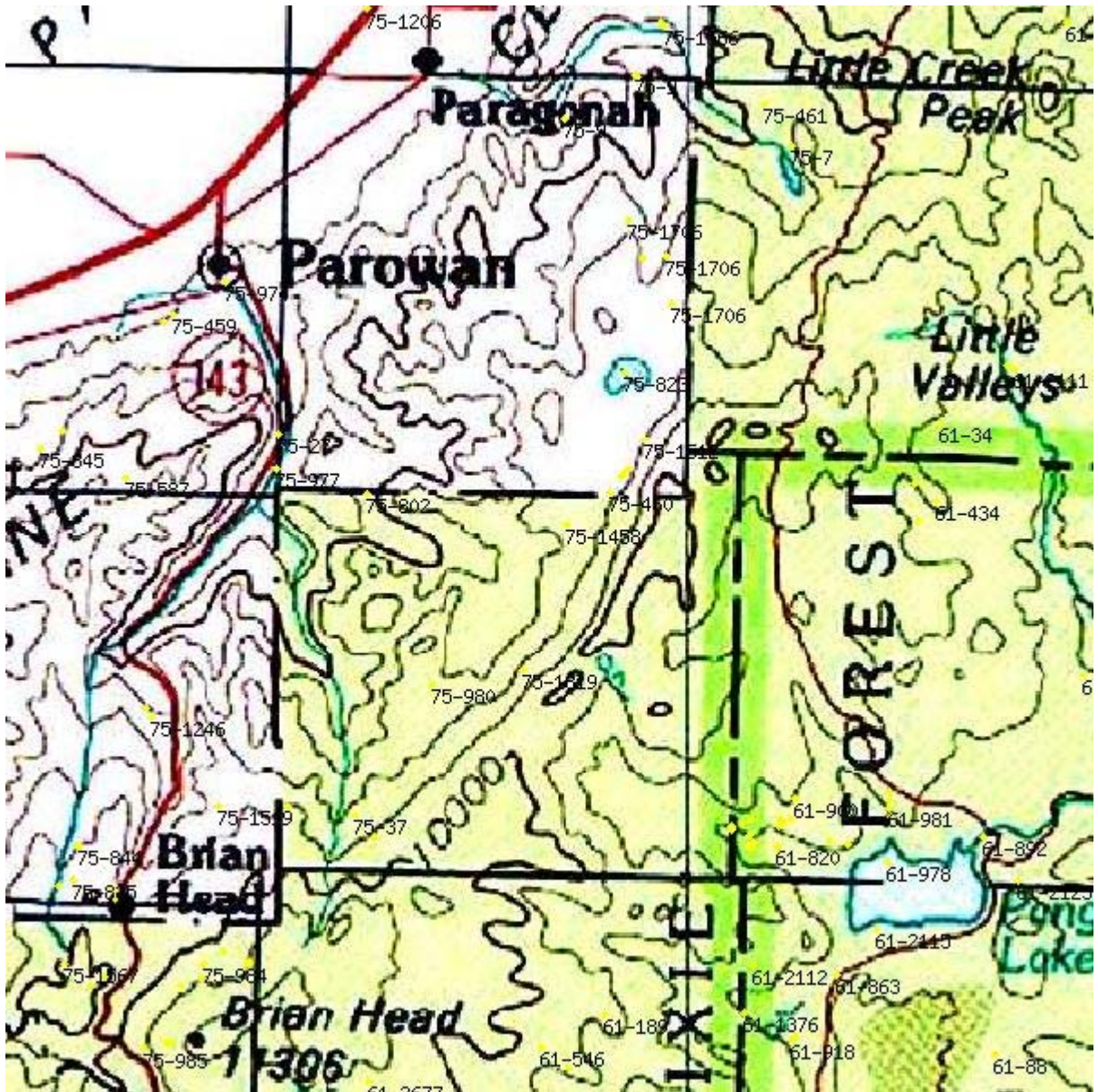
NATIONAL FOREST



1998 Terra Server – Brian Head, UT



1998 Terra Server Parowan, UT



Water Rights

QUERY TYPE LIMITATIONS			
STATUS OF RIGHT	TYPE OF DIVERSION	APPLICATION TYPE	WATER USE TYPE

<input type="checkbox"/> Unapproved	<input type="checkbox"/> Underground	<input checked="" type="checkbox"/> Water Right	<input checked="" type="checkbox"/> Irrigation
<input checked="" type="checkbox"/> Approved	<input checked="" type="checkbox"/> Surface	<input type="checkbox"/> Changes	<input checked="" type="checkbox"/> Stock Water
<input type="checkbox"/> Perfected	<input checked="" type="checkbox"/> Springs	<input type="checkbox"/> Exchanges	<input checked="" type="checkbox"/> Domestic
<input type="checkbox"/> Terminated	<input type="checkbox"/> Drains	<input type="checkbox"/> Test Wells	<input checked="" type="checkbox"/> Municipal
	<input type="checkbox"/> Point to Point	<input type="checkbox"/> Sewage Reuse	<input checked="" type="checkbox"/> Mining
	<input type="checkbox"/> Rediversion		<input checked="" type="checkbox"/> Power
			<input checked="" type="checkbox"/> Other

WR Number	Diversion Type/Location	Well Log	Status	Priority	Uses	CFS	ACFT	Owner Name
75-27	Surface N1480 W930 E4 36 34S 9W SL		P	19221215	P	24.000	0.000	PAROWAN MUNICIPAL CORPORATION
75-974	Surface S495 E300 NW 24 34S 9W SL		P	18600000	IS	22.584	13969.049	STATE OF UTAH WATER RESOURCES FOR: PAROWAN RESOURCES COMPANY
75-977	Surface N1480 W930 SE 36 34S 9W SL		P	18600000	IM	2.000	0.000	PAROWAN CITY MUNICIPAL CORPORATION PAROWAN UTILITY
75-1514	Surface S266 E0 N4 10 36S 9W SL		P	1860	M	0.000	31.000	BRIAN HEAD MUNICIPAL CORPORATION P.O. BOX
75-1662	Surface S495 E300 NW 24 34S 9W SL		P	18600000	I	1.130	700.000	PAROWAN RESOURCES COMPANY C/O HAROLD S. M
75-1727	Surface S495 E300 NW 24		P	18600000	I	0.006	3.500	PAROWAN RESOURCES COMPANY C/O HAROLD M

<u>75-1842</u>	34S 9W SL Surface S495 E300 NW 24 34S 9W SL	P	18600000	I	0.007	4.041	PAROWAN RES COMPAN ATTN: HAROLD S.
--------------------------------	---	----------	-----------------	----------	--------------	--------------	---

WARNING: Water Rights makes NO claims as to the accuracy of this data.)

RUN DATE: 07/12/2007 Page 1

CHANGE: a5618

WATER RIGHT: 75-1514 CERT. NO.:

AMENDATORY? No

BASE WATER RIGHTS: 75-1514

RIGHT EVIDENCED BY: 75-1514 (Portion 75-974, Greenwood Decree,
2 Feb. 1914)

CHANGES: Point of Diversion [X], Place of Use [X], Nature of Use [X],
Reservoir Storage [].

-----*

NAME: Parowan Reservoir & Irrigation Co.

ADDR: c/o Harold S. Mitchell

41 South 100 East

Parowan UT 84761

INTEREST: 100% REMARKS:

-----*

FILED: 09/07/1968 | PRIORITY: 09/07/1968 | ADV BEGAN: | ADV

ENDED: | NEWSPAPER:

ProtestEnd: | PROTESTED: [No] | HEARNG HLD: | SE

ACTION: [Approved] | ActionDate: 01/07/1969 | PROOF DUE: 12/31/1971

EXTENSION:

| ELEC/PROOF: [Election] | ELEC/PROOF: 11/19/1971 | CERT/WUC: 11/07/1991 | LAP,

ETC: | LAPS LETTER:

RUSH LETTR: | RENOVATE: | RECON REQ: | TYPE:

[]

Status: Water User's Claim (Signed)

*****H E R E T O F O R E*****
*****H E R E A F T E R*****

| FLOW: 31.0 acre-feet

| FLOW: 31.0 acre-feet

-----|

| SOURCE: Parowan Main Creek (Center Creek)

| SOURCE: Developed springs (8)

-----|

| COUNTY: Iron

| COUNTY: Iron COM DESC: Near Brian Head Town

-----|

| The entire flow of the seeps will be

| conveyed away from the seep area, which

| will be fenced. The overflow will be

|
|
|
|

directed into the natural drainage of	
Parowan Main Creek. The water is to	
be used by the Brian Head Corporation and	
will be measured through a water	
meter. A water trough will be provided out-	
side of the fenced area to provide	
livestock and wildlife watering privileges.	

| **POINT(S) OF DIVERSION ----->** |
 | **CHANGED AS FOLLOWS: (Click Location link for WRPLAT)** |
 |-----|-----|

| Point Surface: |
 | Point Surface: |
 | (1) N 1480 ft W 930 ft from SE cor, Sec 36, T 34S, R 9W, SLBM | (1)
 | S 210 ft E 1500 ft from N4 cor, Sec 11, T 36S, R 9W, SLBM |
Dvrting Wks: Pipeline & ditches	
Dvrting Wks: Developed springs & pipeline	
Source: Parowan Main Creek (Center Creek)	
Source: Brian Head Seeps	
Stream Alt?: No	
-----	-----

| **PLACE OF USE ----->** |
 | **CHANGED as follows:** |
 |-----|-----|

				--NW ¹ / ₄ --	--NE ¹ / ₄ --	--SW ¹ / ₄ --	--SE ¹ / ₄ --	
--NW ¹ / ₄ --	--NE ¹ / ₄ --	--SW ¹ / ₄ --	--SE ¹ / ₄ --					
				N N S S	N N S S	N N S S	N N S S	
N N S S	N N S S	N N S S	N N S S					
				W E W E	W E W E	W E W E	W E W E	
W E W E	W E W E	W E W E	W E W E					
Sec 02 T 34S R 9W SLBM				*X:X:X:X**	X:X:X:X**	X:X:X:X**	X:X:X:X**	Sec
02 T 36S R 9W SLBM				*X:X:X:X**	: : : **	:X: :X**	: :X: *	
Sec 09 T 34S R 9W SLBM				*X:X:X:X**	X:X:X:X**	X:X:X:X**	X:X:X:X**	Sec
03 T 36S R 9W SLBM				* : : : **	: : :X**	: : : **	:X:X:X*	

Sec 10 T 34S R 9W SLBM	*X:X:X:X**X:X:X:X**X:X:X:X**X:X:X:X*	Sec 10 T 36S R 9W SLBM	* : : : ** :X: :X** : : : ** : : : *
Sec 11 T 34S R 9W SLBM	*X:X:X:X**X:X:X:X**X:X:X:X**X:X:X:X*	Sec 11 T 36S R 9W SLBM	*X:X: : ** : : : ** : : : ** : : : *
Sec 14 T 34S R 9W SLBM	*X:X:X:X**X:X:X:X**X:X:X:X**X:X:X:X*		
Sec 15 T 34S R 9W SLBM	*X:X:X:X**X:X:X:X**X:X:X:X**X:X:X:X*		
Sec 16 T 34S R 9W SLBM	*X:X:X:X**X:X:X:X**X:X:X:X**X:X:X:X*		
Sec 17 T 34S R 9W SLBM	*X:X:X:X**X:X:X:X**X:X:X:X**X:X:X:X*		
Sec 20 T 34S R 9W SLBM	*X:X:X:X**X:X:X:X**X:X:X:X**X:X:X:X*		
Sec 21 T 34S R 9W SLBM	*X:X:X:X**X:X:X:X**X:X:X:X**X:X:X:X*		
Sec 22 T 34S R 9W SLBM	*X:X:X:X**X:X:X:X**X:X:X:X**X:X:X:X*		
Sec 23 T 34S R 9W SLBM	*X:X:X:X**X:X:X:X**X:X:X:X**X:X:X:X*		

NATURE OF USE ----->
CHANGED as follows:

SUPPLEMENTAL to Other Water Rights: Yes		
SUPPLEMENTAL to Other Water Rights: No		
IRR: 3773.7000 acs Sol/Sup:	7.7500 acs USED 04/01 - 10/31	
.....		
.....		
STK: 3310.0000 Cattle or Equivalent	USED 01/01 - 12/31	STK:
15.0000 Cattle or Equivalent	USED 01/01 - 12/31	
.....		
.....		
COMMERCIAL: Summer homes,	USED 01/01 - 12/31	OTH:
recreation community, sanitation purposes within ski lodge		
.....		

*****E N D O F D
A T A*****

STATE OF UTAH -- DIVISION OF WATER RIGHTS -- DATA PRINT OUT for 75-1662

(WARNING: Water Rights makes NO claims as to the accuracy of this data.) RUN DATE: 07/12/2007 Page 1

WATER RIGHT: 75-1662 APPLICATION/CLAIM NO.: CERT. NO.:

OWNERSHIP*****

NAME: Parowan Reservoir Company
 ADDR: c/o Harold S. Mitchell
 41 South 100 East
 Parowan UT 84761

DATES, ETC.*****

LAND OWNED BY APPLICANT?

FILED: PRIORITY: 00/00/1860 | PUB BEGAN: | PUB ENDED: | NEWSPAPER:
 ProtestEnd: | PROTESTED: [No] | HEARNG HLD: | SE ACTION: [] | ActionDate: | PROOF DUE:
 EXTENSION: | ELEC/PROOF:[] | ELEC/PROOF: | CERT/WUC: 04/20/1966 | LAP, ETC: | LAPS LETTER:
 RUSH LETTR: | RENOVATE: | RECON REQ: | TYPE: []

PD Book No. Map: 36

Type of Right: Decree Source of Info: Ownership Segregation Status:

LOCATION OF WATER RIGHT*****

FLOW: 1.13 cfs OR 700.0 acre-feet SOURCE: Parowan Main Creek

COUNTY: Iron COMMON DESCRIPTION:

POINTS OF DIVERSION -- SURFACE:

- (1) S 495 ft E 300 ft from NW cor, Sec 24, T 34S, R 9W, SLBM
 Diverting Works: (For flow too high for pipe) Source: Parowan Main Creek
- (2) N 1480 ft W 930 ft from SE cor, Sec 36, T 34S, R 9W, SLBM
 Diverting Works: Dam, reservoir & pipeline Source: Parowan Main Creek

Stream Alt Required?: No

USES OF WATER RIGHT*****

SUPPLEMENTAL GROUP NO. 607005. Water Rights Appurtenant to the following use(s):
 75-6,35,37,136,206,208,267,274,275,375,376,377,454,974,980,1216,1458,1487,1496,1500,1501,1502,1543,1662,1769,1770,1842

###IRRIGATION: Group Total: 689.25 acres Div Limit: 87.67 acft. PERIOD OF USE: 03/15 TO 10/31
 Sole Supply for Irrigation for 75-1662 in this Group has NOT YET been evaluated

###PLACE OF USE:	*-----NORTH WEST QUARTER-----*				*-----NORTH EAST QUARTER-----*				*-----SOUTH WEST QUARTER-----*				*-----SOUTH EAST QUARTER-----*				Section Totals	
	* NW	NE	SW	SE	* NW	NE	SW	SE	* NW	NE	SW	SE	* NW	NE	SW	SE		
Sec 27 T 33S R 9W SLEM *					*				*				*				*	0.0000
Sec 34 T 33S R 9W SLEM *		X				X	X	X	*				*	X	X		*	0.0000
Sec 02 T 34S R 9W SLEM *LOT 1																		X
Sec 11 T 34S R 9W SLEM *		X			*				*				*				*	0.0000

OTHER COMMENTS*****

TYPE OF RIGHT: Portion of "Greenwood Decree", February 2, 1914.

This right was segregated from water right 75-974 on 02/06/1992. There is no record regarding the purpose of this segregation. For all practical intents and purposes, this right is to be used as a portion of 75-974 for the same beneficial uses and in the same places of use.

When other rights of the Parowan Reservoir Company were deeded to the State of Utah Board of Water Resources in a deed recorded 5/13/1996, this right was not specifically described and remains on the State Engineer's records as held by

the Parowan Reservoir Company.

KEC / 25 APRIL 2001

SEGREGATION HISTORY*****

This Right was Segregated from 75-974, with Appl#: , Approval Date: / / under which Proof is to be submitted.

This Right as originally filed:

FLOW IN CFS	QUANTITY IN ACRE-FEET	*-----W A T E R U S E S-----*					
		IRRIGATED ACREAGE	STOCK (ELUs)	DOMESTIC (FAMILIES)	MUNICIPAL	MINING	POWER OTHER

1.13 OR 700.0 175.0000

Purpose of segregation currently undetermined - KEC / 25 April 2001

*****E N D O F D A T A*****

STATE OF UTAH -- DIVISION OF WATER RIGHTS -- DATA PRINT OUT for 75-1842

(WARNING: Water Rights makes NO claims as to the accuracy of this data.) RUN DATE: 07/12/2007 Page 1

WATER RIGHT: 75-1842 APPLICATION/CLAIM NO.: CERT. NO.:

CHANGES: a25839 Approved

 OWNERSHIP*****

NAME: Parowan City Corporation
 ADDR: PO Box 576
 Parowan UT 84761
 INTEREST: 0% REMARKS: Stockholder in Parowan Reservoir Company

NAME: Parowan Reservoir Company
 ADDR: Attn: Harold S. Mitchell
 41 South 100 East
 Parowan UT 84761
 INTEREST: 0% REMARKS: Right held by Utah State Board of Water Resources

NAME: State of Utah Board of Water Resources
 ADDR: For: Parowan Reservoir Company
 1594 West North Temple St., Box 146201
 Salt Lake City UT 84116-6201

 DATES, ETC.*****

LAND OWNED BY APPLICANT?

FILED: PRIORITY: 00/00/1860 | PUB BEGAN: | PUB ENDED: | NEWSPAPER:
 ProtestEnd: | PROTESTED: [No] | HEARNG HLD: | SE ACTION: [] | ActionDate: | PROOF DUE:
 EXTENSION: | ELEC/PROOF:[] | ELEC/PROOF: | CERT/WUC: 04/20/1966 | LAP, ETC: | LAPS LETTER:
 RUSH LETTR: | RENOVATE: | RECON REQ: | TYPE: []

PD Book No. Map:

Type of Right: Decree Source of Info: Ownership Segregation Status:

 LOCATION OF WATER RIGHT*****

FLOW: 0.00653 cfs OR 4.0414 acre-feet SOURCE: Parowan Main Creek

COUNTY: Iron COMMON DESCRIPTION:

POINTS OF DIVERSION -- SURFACE:

- (1) S 495 ft E 300 ft from NW cor, Sec 24, T 34S, R 9W, SLBM
 Diverting Works: (For flow too high for pipe) Source: Parowan Main Creek
- (2) N 1480 ft W 930 ft from SE cor, Sec 36, T 34S, R 9W, SLBM
 Diverting Works: Dam, reservoir & pipeline Source: Parowan Main Creek

Stream Alt Required?: No

 USES OF WATER RIGHT*****

SUPPLEMENTAL GROUP NO. 606893.
 75-1842

###IRRIGATION: 0.0 acres of the Group Total: 1.0104 acres Div Limit: 4.0414 acft. PERIOD OF USE: 03/15 TO 10/31

###PLACE OF USE:	*-----NORTH WEST QUARTER-----*				*-----NORTH EAST QUARTER-----*				*-----SOUTH WEST QUARTER-----*				*-----SOUTH EAST QUARTER-----*				Section Totals	
	* NW	NE	SW	SE	* NW	NE	SW	SE	* NW	NE	SW	SE	* NW	NE	SW	SE		
Sec 02 T 34S R 9W SLEM *X	X		X	X	*X		X	X	*X	X	X	X	*X	X	X	X	*	0.0000
Sec 03 T 34S R 9W SLEM *					*				*				*	X		X	*	0.0000
Sec 09 T 34S R 9W SLEM *					*				*	X	X	X	*X	X	X	X	*	0.0000
Sec 10 T 34S R 9W SLEM *					*	X	X	X	*	X	X	X	*X	X	X	X	*	0.0000
Sec 11 T 34S R 9W SLEM *X	X	X	X	X	*X	X	X	X	*X	X	X	X	*X	X	X	X	*	0.0000
Sec 14 T 34S R 9W SLEM *X	X	X	X	X	*X	X	X	X	*X	X	X	X	*	X	X	X	*	0.0000

Sec 15 T 34S R 9W SLEM *X	X	X	X	*X	X	X	X	*X	X	X	X	*X	X	X	X	X	X	*	0.0000
Sec 16 T 34S R 9W SLEM *X	X	X	X	*X	X	X	X	*X	X	X	X	*X	X	X	X	X	X	*	0.0000
Sec 17 T 34S R 9W SLEM *				*				*				*	X		X		*	0.0000	
Sec 20 T 34S R 9W SLEM *				*X	X	X	X	*				*					*	0.0000	
Sec 21 T 34S R 9W SLEM *X	X		X	*X	X	X	X	*	X			*X	X				*	0.0000	
Sec 22 T 34S R 9W SLEM *X	X	X	X	*X	X	X	X	*X	X			*					*	0.0000	
Sec 23 T 34S R 9W SLEM *X	X	X	X	*				*				*					*	0.0000	

SUPPLEMENTAL GROUP NO. 607005. Water Rights Appurtenant to the following use(s):
 75-6,35,37,136,206,208,267,274,275,375,376,377,454,974,980,1216,1458,1487,1496,1500,1501,1502,1543,1662,1769,1770,1842

###IRRIGATION: Group Total: 689.25 acres Div Limit: 87.67 acft. PERIOD OF USE: 03/15 TO 10/31
 Sole Supply for Irrigation for 75-1842 in this Group has NOT YET been evaluated

###PLACE OF USE:	*-----NORTH WEST QUARTER-----*				*-----NORTH EAST QUARTER-----*				*-----SOUTH WEST QUARTER-----*				*-----SOUTH EAST QUARTER-----*				Section Totals	
	NW	NE	SW	SE	NW	NE	SW	SE	NW	NE	SW	SE	NW	NE	SW	SE		
Sec 27 T 33S R 9W SLEM *				*				*				*			X	X	*	0.0000
Sec 34 T 33S R 9W SLEM *	X			*X	X		X	*				*	X		X		*	0.0000
Sec 02 T 34S R 9W SLEM *LOT 1																		X
Sec 11 T 34S R 9W SLEM *	X			*				*				*					*	0.0000

This Right (75-1842) has an evaluated sole-supply total for irrigation of 0.0000 acres.
 This Right (75-1842) is a member of 2 supplemental water right groups with irrigated acreage totaling 689.2604 acres.

OTHER COMMENTS*****
 Portion of right established by Judge Joshua Greenwood Decree dated February 2, 1914.

SEGREGATION HISTORY*****

This Right was Segregated from 75-974, with Appl#: , Approval Date: / / under which Proof is to be submitted.

This Right as originally filed:

FLOW IN CFS	QUANTITY IN ACRE-FEET	*-----W A T E R U S E S-----*						
		IRRIGATED ACREAGE	STOCK (ELUs)	DOMESTIC (FAMILIES)	MUNICIPAL	MINING	POWER	OTHER
	4.0414	1.0104						

For use at urban fishery by Parowan City
 *****E N D O F D A T A*****

STATE OF UTAH -- DIVISION OF WATER RIGHTS -- DATA PRINT OUT for 75-27(A9214)

(WARNING: Water Rights makes NO claims as to the accuracy of this data.) RUN DATE: 07/12/2007 Page 1

WATER RIGHT: 75-27 APPLICATION/CLAIM NO.: A9214 CERT. NO.: 1410a

CHANGES: a3850 Approved

OWNERSHIP*****

NAME: Parowan Municipal Corporation
ADDR: Parowan UT 84761

DATES, ETC.*****

LAND OWNED BY APPLICANT?

FILED: 12/15/1922 | PRIORITY: 12/15/1922 | PUB BEGAN: | PUB ENDED: | NEWSPAPER:
ProtestEnd: | PROTESTED: [No] | HEARNG HLD: | SE ACTION: [Approved] | ActionDate:05/10/1923 | PROOF DUE:
EXTENSION: | ELEC/PROOF:[Election] | ELEC/PROOF:04/20/1966 | CERT/WUC: | LAP, ETC: | LAPS LETTER:
RUSH LETTR: | RENOVATE: | RECON REQ: | TYPE: []

PD Book No. 2 Map: 36

Type of Right: Application to Appropriate Source of Info: Proposed Determination Status: Certificate

LOCATION OF WATER RIGHT*****

FLOW: 24.0 cfs SOURCE: Parowan Main Creek / Center Creek

COUNTY: Iron COMMON DESCRIPTION:

POINT OF DIVERSION -- SURFACE:
(1) N 1480 ft W 930 ft from E4 cor, Sec 36, T 34S, R 9W, SLBM
Diverting Works: Source:

Stream Alt Required?: No

USES OF WATER RIGHT*****

SUPPLEMENTAL GROUP NO. 607050.

###POWER: Parowan City Hydro-Electric Power Plant, rated at 600 KW. PERIOD OF USE: 01/01 TO 12/31
Acre Feet Allowed by this Right for this Use: 17375.51953
FERC Project No. P-1273

*****E N D O F D A T A*****

STATE OF UTAH -- DIVISION OF WATER RIGHTS -- DATA PRINT OUT for 75-974

(WARNING: Water Rights makes NO claims as to the accuracy of this data.) RUN DATE: 07/12/2007 Page 1

WATER RIGHT: 75-974 APPLICATION/CLAIM NO.: CERT. NO.:

 OWNERSHIP*****

NAME: Parowan Reservoir Company
 ADDR: c/o Harold S. Mitchell
 41 South 100 East
 Parowan UT 84761
 INTEREST: 0% REMARKS: Held by Board of Water Resources

NAME: State of Utah Board of Water Resources
 ADDR: For: Parowan Reservoir Company
 PO Box 146201
 Salt Lake City UT 84114-6201

 DATES, ETC.*****

LAND OWNED BY APPLICANT?

FILED: PRIORITY: 00/00/1860 | PUB BEGAN: | PUB ENDED: | NEWSPAPER:
 ProtestEnd: | PROTESTED: [No] | HEARNG HLD: | SE ACTION: [] | ActionDate: | PROOF DUE:
 EXTENSION: | ELEC/PROOF:[] | ELEC/PROOF: | CERT/WUC: 04/20/1966 | LAP, ETC: | LAPS LETTER:
 RUSH LETTR: | RENOVATE: | RECON REQ: | TYPE: []

PD Book No. 2 Map: 36

Type of Right: Decree Source of Info: Proposed Determination Status:

 LOCATION OF WATER RIGHT*****

FLOW: 22.58427 cfs OR 13969.0486 acre-feet SOURCE: Parowan Main Creek

COUNTY: Iron COMMON DESCRIPTION:

POINTS OF DIVERSION -- SURFACE:

- (1) S 495 ft E 300 ft from NW cor, Sec 24, T 34S, R 9W, SLBM
 Diverting Works: (For flow too high for pipe) Source: Parowan Main Creek
- (2) N 1480 ft W 930 ft from SE cor, Sec 36, T 34S, R 9W, SLBM
 Diverting Works: Dam, reservoir & pipeline Source: Parowan Main Creek

Stream Alt Required?: No

 USES OF WATER RIGHT*****

SUPPLEMENTAL GROUP NO. 606259. Water Rights Appurtenant to the following use(s):
 75-6,35,37,974,980,1216,1838

###IRRIGATION: Group Total: 3108.1 acres Div Limit: 0.0 acft. PERIOD OF USE: 04/01 TO 10/31
 Sole Supply for Irrigation for 75-974 in this Group has NOT YET been evaluated

###PLACE OF USE:	*-----NORTH WEST QUARTER-----*				*-----NORTH EAST QUARTER-----*				*-----SOUTH WEST QUARTER-----*				*-----SOUTH EAST QUARTER-----*				Section Totals
	NW	NE	SW	SE	NW	NE	SW	SE	NW	NE	SW	SE	NW	NE	SW	SE	
Sec 02 T 34S R 9W SLEM	*10.0000	10.9000	10.0000	11.7000*19.9000		19.6000	21.1000*10.0000	37.4000		38.4000*38.8000	37.8000	38.2000	24.9000*				328.7000
Sec 09 T 34S R 9W SLEM	*			*			5.9000	39.3000	10.0000*19.2000	29.6000	36.0000	37.6000*					177.6000
Sec 10 T 34S R 9W SLEM	*			*	38.6000		*			17.1000			4.5000*				60.2000
Sec 11 T 34S R 9W SLEM	*29.6000	38.3000	34.2000	38.0000*37.4000	36.2000	37.9000	*39.0000	37.9000	37.2000	36.6000*33.7000		37.9000	36.5000*				510.4000
Sec 14 T 34S R 9W SLEM	*24.3000	35.5000	27.5000	10.0000*36.7000	35.2000		*38.1000	13.0000	36.0000	23.6000*			*				279.9000
Sec 15 T 34S R 9W SLEM	*38.8000	24.7000	35.7000	32.8000*15.6000	27.5000	38.2000	31.3000*37.9000	37.2000	38.6000	32.7000*37.8000	35.1000	37.7000	35.9000*				537.5000
Sec 16 T 34S R 9W SLEM	*40.0000	28.8000	36.8000	36.5000*31.4000	38.0000	34.0000	29.9000*32.5000	30.9000		*37.0000	36.1000	39.2000	37.0000*				488.1000
Sec 17 T 34S R 9W SLEM	*			*			38.4000*			*			*				38.4000
Sec 20 T 34S R 9W SLEM	*			*	15.5000		7.8000*			*			*				23.3000
Sec 21 T 34S R 9W SLEM	*15.3000	33.7000		32.1000*36.6000	34.1000	36.8000	37.0000*	18.3000		*27.9000	1.8000		*				273.6000
Sec 22 T 34S R 9W SLEM	*36.5000	36.5000	37.7000	38.6000*36.2000	37.9000	29.7000	25.4000*16.9000	9.3000		*			*				304.7000
Sec 23 T 34S R 9W SLEM	*38.1000	30.2000	11.4000	6.0000*			*			*			*				85.7000

SUPPLEMENTAL GROUP NO. 606260. Water Rights Appurtenant to the following use(s):
75-6,35,37,81,974,980,1216

###IRRIGATION: Group Total: 164.1 acres Div Limit: 0.0 acft. PERIOD OF USE: 03/15 TO 10/31
Sole Supply for Irrigation for 75-974 in this Group has NOT YET been evaluated
Irrigation limited to the requirements of 160 acres by Proposed Determination and Errata - See Claim 75-81, PD Page 184.

###PLACE OF USE:	*-----NORTH WEST QUARTER-----*				*-----NORTH EAST QUARTER-----*				*-----SOUTH WEST QUARTER-----*				*-----SOUTH EAST QUARTER-----*				Section Totals
	* NW	NE	SW	SE	* NW	NE	SW	SE	* NW	NE	SW	SE	* NW	NE	SW	SE	
Sec 02 T 34S R 9W SLEM	*29.9000		28.6000						*25.1000		36.0000						119.6000
Sec 03 T 34S R 9W SLEM	*				*				*				*	18.0000		17.6000*	35.6000
Sec 11 T 34S R 9W SLEM	* 8.5000		0.4000		*				*				*				8.9000

SUPPLEMENTAL GROUP NO. 606261. Water Rights Appurtenant to the following use(s):
75-6,35,37,85,974,980,1216

###IRRIGATION: Group Total: 202.3 acres Div Limit: 0.0 acft. PERIOD OF USE: 03/15 TO 10/31
Sole Supply for Irrigation for 75-974 in this Group has NOT YET been evaluated
Water Right 75-85 limited to the irrigation requirements of 160 acres. See PD Page 184.

###PLACE OF USE:	*-----NORTH WEST QUARTER-----*				*-----NORTH EAST QUARTER-----*				*-----SOUTH WEST QUARTER-----*				*-----SOUTH EAST QUARTER-----*				Section Totals
	* NW	NE	SW	SE	* NW	NE	SW	SE	* NW	NE	SW	SE	* NW	NE	SW	SE	
Sec 10 T 34S R 9W SLEM	*				*		39.3000	22.6000*					*38.5000	36.7000	32.5000	32.7000*	202.3000

SUPPLEMENTAL GROUP NO. 606262. Water Rights Appurtenant to the following use(s):
75-6,35,37,77,974,980,1216

###IRRIGATION: Group Total: 95.9 acres Div Limit: 0.0 acft. PERIOD OF USE: 03/15 TO 10/31
Sole Supply for Irrigation for 75-974 in this Group has NOT YET been evaluated
Water right 75-77 limited to the irrigation requirements of 90.5 acres. See PD page 186.

###PLACE OF USE:	*-----NORTH WEST QUARTER-----*				*-----NORTH EAST QUARTER-----*				*-----SOUTH WEST QUARTER-----*				*-----SOUTH EAST QUARTER-----*				Section Totals
	* NW	NE	SW	SE	* NW	NE	SW	SE	* NW	NE	SW	SE	* NW	NE	SW	SE	
Sec 16 T 34S R 9W SLEM	*				*				*		6.7000	5.5000*					12.2000
Sec 17 T 34S R 9W SLEM	*				*				*				*	33.1000			33.1000
Sec 20 T 34S R 9W SLEM	*				*39.5000		4.1000		*				*				43.6000
Sec 21 T 34S R 9W SLEM	* 7.0000				*				*				*				7.0000

SUPPLEMENTAL GROUP NO. 606263. Water Rights Appurtenant to the following use(s):
75-6,35,37,828,974,980,1216

###IRRIGATION: Group Total: 138.2 acres Div Limit: 0.0 acft. PERIOD OF USE: 03/15 TO 10/31
Sole Supply for Irrigation for 75-974 in this Group has NOT YET been evaluated
Water right 75-828 limited to the irrigation requirements of 90.5 acres. See PD page 186.

###PLACE OF USE:	*-----NORTH WEST QUARTER-----*				*-----NORTH EAST QUARTER-----*				*-----SOUTH WEST QUARTER-----*				*-----SOUTH EAST QUARTER-----*				Section Totals
	* NW	NE	SW	SE	* NW	NE	SW	SE	* NW	NE	SW	SE	* NW	NE	SW	SE	
Sec 16 T 34S R 9W SLEM	*				*				* 6.8000	4.8000	32.5000	30.4000*					74.5000
Sec 17 T 34S R 9W SLEM	*				*				*				*	7.5000		32.0000*	39.5000
Sec 20 T 34S R 9W SLEM	*				*		17.2000		*				*				17.2000
Sec 21 T 34S R 9W SLEM	* 7.0000				*				*				*				7.0000

SUPPLEMENTAL GROUP NO. 606264. Water Rights Appurtenant to the following use(s):
75-6,35,37,974,980,1216,1410

###IRRIGATION: Group Total: 8.9 acres Div Limit: 0.0 acft. PERIOD OF USE: 03/15 TO 10/31
Sole Supply for Irrigation for 75-974 in this Group has NOT YET been evaluated

###PLACE OF USE:	*-----NORTH WEST QUARTER-----*				*-----NORTH EAST QUARTER-----*				*-----SOUTH WEST QUARTER-----*				*-----SOUTH EAST QUARTER-----*				Section Totals
	* NW	NE	SW	SE	* NW	NE	SW	SE	* NW	NE	SW	SE	* NW	NE	SW	SE	
Sec 22 T 34S R 9W SLEM	*				*			0.6000*					*				0.6000
Sec 23 T 34S R 9W SLEM	*		8.3000		*				*				*				8.3000

SUPPLEMENTAL GROUP NO. 606265. Water Rights Appurtenant to the following use(s):
75-6,35,37,356,415,416,974,980,1216

###IRRIGATION: Group Total: 56.3 acres Div Limit: 0.0 acft. PERIOD OF USE: 03/15 TO 10/31
Sole Supply for Irrigation for 75-974 in this Group has NOT YET been evaluated
Water rights 75-356, 415 and 416 limited to the irrigation requirements of 35.0 acres. See PD page 165.

###PLACE OF USE:	*-----NORTH WEST QUARTER-----*				*-----NORTH EAST QUARTER-----*				*-----SOUTH WEST QUARTER-----*				*-----SOUTH EAST QUARTER-----*				Section Totals
	* NW	NE	SW	SE	* NW	NE	SW	SE	* NW	NE	SW	SE	* NW	NE	SW	SE	
Sec 02 T 34S R 9W SLEM	*	25.4000		23.8000*	4.0000		3.1000		*				*				56.3000

SUPPLEMENTAL GROUP NO. 606518. Water Rights Appurtenant to the following use(s):
75-6,35,37,425,426,427,974,980,1216,1433

###IRRIGATION: Group Total: 198.2 acres Div Limit: 0.0 acft. PERIOD OF USE: 03/15 TO 10/31
Sole Supply for Irrigation for 75-974 in this Group has NOT YET been evaluated
75-425,426,427 & 1433 are limited to the irrigation requirements of 81.0 acres.

###PLACE OF USE:	*-----NORTH WEST QUARTER-----*				*-----NORTH EAST QUARTER-----*				*-----SOUTH WEST QUARTER-----*				*-----SOUTH EAST QUARTER-----*				Section Totals
	* NW	NE	SW	SE	* NW	NE	SW	SE	* NW	NE	SW	SE	* NW	NE	SW	SE	
Sec 01 T 34S R 9W SLEM	*				*				*37.6000		13.4000		*				51.0000
Sec 02 T 34S R 9W SLEM	*				*			18.4000*					*			14.0000*	32.4000
Sec 11 T 34S R 9W SLEM	*				*			38.1000*					*	34.8000			72.9000
Sec 12 T 34S R 9W SLEM	*		27.2000		*				*14.7000				*				41.9000

SUPPLEMENTAL GROUP NO. 606532. Water Rights Appurtenant to the following use(s):
75-974,1458

###STOCKWATER: Group Total: 3315.0000 Stock Div Limit: PERIOD OF USE: 01/01 TO 12/31
Sole Supply for Stockwatering for 75-974 in this Group has NOT YET been evaluated

SUPPLEMENTAL GROUP NO. 606562. Water Rights Appurtenant to the following use(s):
75-6,35,37,85,974,980,1216,1499

###IRRIGATION: Group Total: 279.3 acres Div Limit: 0.0 acft. PERIOD OF USE: 03/15 TO 10/31
Sole Supply for Irrigation for 75-974 in this Group has NOT YET been evaluated

###PLACE OF USE:	*-----NORTH WEST QUARTER-----*				*-----NORTH EAST QUARTER-----*				*-----SOUTH WEST QUARTER-----*				*-----SOUTH EAST QUARTER-----*				Section Totals
	* NW	NE	SW	SE	* NW	NE	SW	SE	* NW	NE	SW	SE	* NW	NE	SW	SE	
Sec 10 T 34S R 9W SLEM	*				*38.5000	38.6000	39.3000	22.6000*					*38.5000	36.7000	32.4000	32.7000*	279.3000

SUPPLEMENTAL GROUP NO. 607005. Water Rights Appurtenant to the following use(s):
75-6,35,37,136,206,208,267,274,275,375,376,377,454,974,980,1216,1458,1487,1496,1500,1501,1502,1543,1662,1769,1770,1842

###IRRIGATION: Group Total: 689.25 acres Div Limit: 87.67 acft. PERIOD OF USE: 03/15 TO 10/31
Sole Supply for Irrigation for 75-974 in this Group has NOT YET been evaluated

###PLACE OF USE:	*-----NORTH WEST QUARTER-----*				*-----NORTH EAST QUARTER-----*				*-----SOUTH WEST QUARTER-----*				*-----SOUTH EAST QUARTER-----*				Section Totals
	* NW	NE	SW	SE	* NW	NE	SW	SE	* NW	NE	SW	SE	* NW	NE	SW	SE	
Sec 27 T 33S R 9W SLEM	*				*				*				*		X	X	0.0000
Sec 34 T 33S R 9W SLEM	*	X			*X	X		X	*				*	X		X	0.0000
Sec 02 T 34S R 9W SLEM	*				*				*				*				X
Sec 11 T 34S R 9W SLEM	*	X			*				*				*				0.0000

SUPPLEMENTAL GROUP NO. 607529.
75-974

###IRRIGATION: 0.0 acres of the Group Total: 3476.1171 acre Div Limit: 0.0 acft. PERIOD OF USE: 03/15 TO 10/31

###STOCKWATER: 3315.0000 Stock Units Div Limit: PERIOD OF USE: 01/01 TO 12/31

###PLACE OF USE:	*-----NORTH WEST QUARTER-----*				*-----NORTH EAST QUARTER-----*				*-----SOUTH WEST QUARTER-----*				*-----SOUTH EAST QUARTER-----*				Section Totals
	* NW	NE	SW	SE	* NW	NE	SW	SE	* NW	NE	SW	SE	* NW	NE	SW	SE	
Sec 02 T 34S R 9W SLEM	*X	X	X	X	*X		X	X	*X	X	X	X	*X	X	X	X	0.0000
Sec 03 T 34S R 9W SLEM	*				*				*				*	X		X	0.0000
Sec 09 T 34S R 9W SLEM	*				*				*	X	X	X	*X	X	X	X	0.0000
Sec 10 T 34S R 9W SLEM	*				*	X	X	X	*		X		*X	X	X	X	0.0000

Sec 11 T 34S R 9W SLBM *X	X	X	X	*X	X	X	X	X	X	X	X	X	X	X	X	X	X	*	0.0000
Sec 14 T 34S R 9W SLBM *X	X	X	X	*X	X	X	X	X	X	X	X	X	X	X	X	X	X	*	0.0000
Sec 15 T 34S R 9W SLBM *X	X	X	X	*X	X	X	X	X	X	X	X	X	X	X	X	X	X	*	0.0000
Sec 16 T 34S R 9W SLBM *X	X	X	X	*X	X	X	X	X	X	X	X	X	X	X	X	X	X	*	0.0000
Sec 17 T 34S R 9W SLBM *	X	X	X	*	X	X	X	X	X	X	X	X	X	X	X	X	X	*	0.0000
Sec 20 T 34S R 9W SLBM *	X	X	X	*X	X	X	X	X	X	X	X	X	X	X	X	X	X	*	0.0000
Sec 21 T 34S R 9W SLBM *X	X	X	X	*X	X	X	X	X	X	X	X	X	X	X	X	X	X	*	0.0000
Sec 22 T 34S R 9W SLBM *X	X	X	X	*X	X	X	X	X	X	X	X	X	X	X	X	X	X	*	0.0000
Sec 23 T 34S R 9W SLBM *X	X	X	X	*	X	X	X	X	X	X	X	X	X	X	X	X	X	*	0.0000

 This Right (75-974) has an evaluated sole-supply total for irrigation of 0.0000 acres.

 This Right (75-974) is a member of 12 supplemental water right groups with irrigated acreage totaling 8415.6671 acres.

 PLACE OF USE for STOCKWATERING*****

	NORTH-WEST¼				NORTH-EAST¼				SOUTH-WEST¼				SOUTH-EAST¼						
	NW	NE	SW	SE	NW	NE	SW	SE	NW	NE	SW	SE	NW	NE	SW	SE			
Sec 02 T 34S R 9W SLBM	* X	X	X	X	X*	* X	:	X	X*	* X	X	X	X*	* X	X	X	X*		
Sec 03 T 34S R 9W SLBM	*	:	:	:	*	:	:	:	*	*	:	:	:	*	*	:	X*		
Sec 09 T 34S R 9W SLBM	*	:	:	:	*	:	:	:	*	*	:	X	X	X*	* X	X	X	X*	
Sec 10 T 34S R 9W SLBM	*	:	:	:	*	:	X	X	X*	*	:	:	X	*	* X	X	X	X*	
Sec 11 T 34S R 9W SLBM	* X	X	X	X	X*	* X	:	X	X*	* X	X	X	X*	* X	:	X	X*		
Sec 14 T 34S R 9W SLBM	* X	X	X	X	X*	* X	X	:	*	* X	X	X	X*	*	:	:	:	*	
Sec 15 T 34S R 9W SLBM	* X	X	X	X	X*	* X	X	X	X*	* X	X	X	X*	* X	X	X	X	X*	
Sec 16 T 34S R 9W SLBM	* X	X	X	X	X*	* X	X	X	X*	* X	X	X	X*	* X	X	X	X	X*	
Sec 17 T 34S R 9W SLBM	*	:	:	:	*	:	:	:	X*	*	:	:	:	*	*	:	X	X*	
Sec 20 T 34S R 9W SLBM	*	:	:	:	*	X	X	X	X*	*	:	:	:	*	*	:	:	:	*
Sec 21 T 34S R 9W SLBM	* X	X	:	X*	* X	X	X	X	X*	*	:	X	:	*	* X	X	:	*	
Sec 22 T 34S R 9W SLBM	* X	X	X	X	X*	* X	X	X	X*	* X	X	:	*	*	:	:	:	*	
Sec 23 T 34S R 9W SLBM	* X	X	X	X	X*	*	:	:	:	*	:	:	:	*	*	:	:	*	

 OTHER COMMENTS*****

TYPE OF RIGHT: Greenwood Decree, dated February 2, 1914.

 SEGREGATION HISTORY*****

This Right was Segregated from , with Appl#: , Approval Date: / / under which Proof is to be submitted.

This Right as originally filed:

FLOW IN	CFS	QUANTITY IN	ACRE-FEET	-----W A T E R U S E S-----*							
				IRRIGATED	STOCK	DOMESTIC	MUNICIPAL	MINING	POWER	OTHER	
		ACRE-FEET	ACREAGE	(ELUs)	(FAMILIES)	(*)	(*)	(*)	(*)	(*)	(*)
	24.5	OR 15159.78	3773.8000	3315.0000							

Irrigation is supplemental. `AF` quantity is based on all supplemental rights.

The following Water Rights have been Segregated from 75-974:

- (1) WRNUM: 75-1514 0.05 OR 31.0 7.7500
 APPL#:
 NAME: Parowan Reservoir Company
 FILED: 09/09/1968 STATUS:
 APPR: 01/07/1969
 See change a5618 and change al2265 (For use at Brian Head)

- (2) WRNUM: 75-1515 0.48 OR 300.0 75.0000
 APPL#:
 NAME: Parowan Reservoir Company
 FILED: 09/07/1971 STATUS:
 APPR: 01/14/1972
 See change a6655 and change al2266 (For use at Brian Head)

- (3) WRNUM: 75-1662 1.13 OR 700.0 175.0000
 APPL#:
 NAME: Parowan Reservoir Company
 FILED: 02/06/1992 STATUS:
 APPR:
 Purpose of this segregation not currently known

(4) WRNUM: 75-1693 0.24 OR 150.0 37.5000
 APPL#:
 NAME: Parowan Reservoir Company
 FILED: 03/06/1992 STATUS:
 APPR:
 See Change al6693.

(5) WRNUM: 75-1727 0.0057 OR 3.5 0.8750
 APPL#:
 NAME: Parowan Reservoir Company
 FILED: 08/23/1995 STATUS: DEC
 APPR:
 For lease to Cedar Breaks Mountain Estates Homeowners under a22729

(6) WRNUM: 75-1839 0.0035 OR 2.19 0.5475
 APPL#:
 NAME: Parowan Reservoir Company
 FILED: 02/27/2001 STATUS:
 APPR:
 For use at Thunder Ridge Boy Scout Camp; see change application a25305

(7) WRNUM: 75-1842 0.00653 OR 4.0414 1.0104
 APPL#:
 NAME: Parowan Reservoir Company, et.al.
 FILED: 05/01/2001 STATUS:
 APPR:
 For use at urban fishery by Parowan City

	CFS	ACRE-FEET	IRRIGATED ACREAGE	STOCK (ELUs)	DOMESTIC (FAMILIES)	MUNICIPAL	MINING	POWER	OTHER
75-974 currently has:	- 22.58427	OR 13969.0486	3476.1171	3315.0000					
All IRRIGATION	has been SEGREGATED OFF.								
All STOCKWATERING	has been SEGREGATED OFF.								

*****E N D O F D A T A*****

STATE OF UTAH -- DIVISION OF WATER RIGHTS -- DATA PRINT OUT for 75-977

(WARNING: Water Rights makes NO claims as to the accuracy of this data.) RUN DATE: 07/12/2007 Page 1

WATER RIGHT: 75-977 APPLICATION/CLAIM NO.: CERT. NO.:

 OWNERSHIP*****

NAME: Parowan City Municipal Corporation
 ADDR: Parowan UT 84761

 DATES, ETC.*****

LAND OWNED BY APPLICANT?

FILED:	PRIORITY: 00/00/1860	PUB BEGAN:	PUB ENDED:	NEWSPAPER:	
ProtestEnd:	PROTESTED: [No]	HEARNG HLD:	SE ACTION: []	ActionDate:	PROOF DUE:
EXTENSION:	ELEC/PROOF:[]	ELEC/PROOF:	CERT/WUC:	LAP, ETC:	LAPS LETTER:
RUSH LETTR:	RENOVATE:	RECON REQ:	TYPE: []		

PD Book No. 2 Map: 36

Type of Right: Diligence Claim Source of Info: Proposed Determination Status:

 LOCATION OF WATER RIGHT*****

FLOW: 2.0 cfs SOURCE: Parowan Main Creek

COUNTY: Iron COMMON DESCRIPTION:

POINT OF DIVERSION -- SURFACE:

(1) N 1480 ft W 930 ft from SE cor, Sec 36, T 34S, R 9W, SLBM
 Diverting Works: `Forebay Reservoir` Source:

Stream Alt Required?: No

POINT OF REDIVERSION:

(1) S 590 ft W 545 ft from N4 cor, Sec 24, T 34S, R 9W, SLBM
 Diverting Works: Source:

 USES OF WATER RIGHT*****

SUPPLEMENTAL GROUP NO. 605948. Water Rights Appurtenant to the following use(s):
 75-109,977

###MUNICIPAL: Parowan PERIOD OF USE: 04/01 TO 10/31
 Acre Feet Allowed by this Right for this Use:
 Within the service area of Parowan.

SUPPLEMENTAL GROUP NO. 607077. Water Rights Appurtenant to the following use(s):
 75-35,37,308,977,980

###IRRIGATION: Group Total: 395.11 acres Div Limit: 0.0 acft. PERIOD OF USE: 03/15 TO 10/31
 Sole Supply for Irrigation for 75-977 in this Group has NOT YET been evaluated

###PLACE OF USE:	*-----NORTH WEST QUARTER-----*				*-----NORTH EAST QUARTER-----*				*-----SOUTH WEST QUARTER-----*				*-----SOUTH EAST QUARTER-----*				Section Totals
	NW	NE	SW	SE	NW	NE	SW	SE	NW	NE	SW	SE	NW	NE	SW	SE	
Sec 12 T 34S R 9W SLEM *				*					*		20.4000		*			*	20.4000
Sec 13 T 34S R 9W SLEM *	12.5000	2.7000	29.0300	23.4500*					23.3400	25.6800	25.2200	23.6900*	0.4200		0.4700	*	166.5000
Sec 14 T 34S R 9W SLEM *				2.0900*			32.1000	29.2000*		2.2600		2.4700*	21.9900	26.6600	27.8700	25.8100*	170.4500
Sec 23 T 34S R 9W SLEM *		1.1000			11.1600	10.0000			*			*				*	22.2600
Sec 24 T 34S R 9W SLEM *	10.8500	4.6500		*				*				*				*	15.5000

	Commerce link	Acres	Cattle Head	CFS	Acre feet
Water Right #					
75-27	Hydroelectric plant plant 600KW			24	17375.52
75-974	Irrigation	8,415		22.58	13969.05
	Stockwater/cattle		3,315		
75-977	Irrigation/municipal	395		2	?
75-1514	Stockwater/cattle		3,310	?	31
	Irrigation	3,773			
	Commercial/recreation				
75-1662	Irrigation	689		1.13	700
75-1842	Urban Fisheries	1.01		0.00653	4.04
Totals		13273.01	6625	49.71653	32079.61

Parowan Creek Ground Photos



Beginning of Watershed looking upstream



Beginning of Watershed looking downstream



1.1 miles downstream



1.5 miles downstream



Representative photo 4 miles downstream





Hydropower project 7 miles downstream



Hydropower project 7 miles downstream



Terminus at final agriculture diversion in Parowan, UT 10 miles downstream



Upstream at final diversion, (wash disappears 1 mile downstream)