

DELL Technologies

CONNECTED HEALTH

TECHNOLOGY SOLUTIONS FOR CARE PROVIDERS





HEALTHCARE USE CASES

PATIENT REGISTRATION AND ADMINISTRATION



Innovative technology solutions that align to new patients' needs to speed up registration and access to care.

| [Page 4](#)

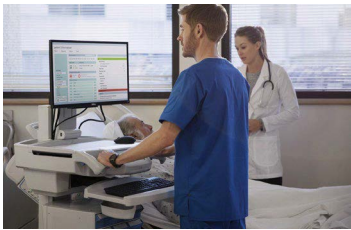
DOCTOR'S OFFICE



Efficient and space saving solutions for care providers in need of accurate, secure and fast access to patient information.

| [Page 6](#)

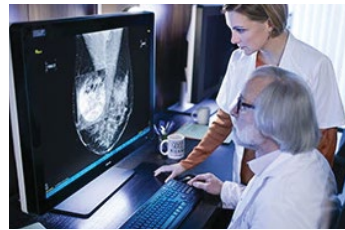
EXAM ROOM



Innovative technology solutions that are flexible, secure and easy to manage so care providers can focus on their patient's needs.

| [Page 7](#)

MEDICAL IMAGING AND DIAGNOSIS



The best tools for radiologists to work efficiently and confidentially to enable positive outcomes.

| [Page 9](#)

EMERGENCY FIRST RESPONDER (EMS)



Technology solutions for emergency medical service and care providers who need to be equipped with tools to perform in the most demanding situations.

| [Page 10](#)

TELEHEALTH



Gain on-demand secure access to patients, programs and data from wherever your patients are.

| [Page 11](#)

INTERACTIVE LEARNING



Enter new worlds of learning potential with a VR-ready solution for mainstream desktop users.

| [Page 12](#)

SUPPORT AND DEPLOYMENT SERVICES



Upgrade to the most complete support service with ProSupport Plus.

| [Page 13](#)

Patient registration and administration

INNOVATIVE TECHNOLOGY SOLUTIONS THAT ALIGN TO NEW PATIENTS NEEDS TO SPEED UP REGISTRATION AND ACCESS TO CARE.

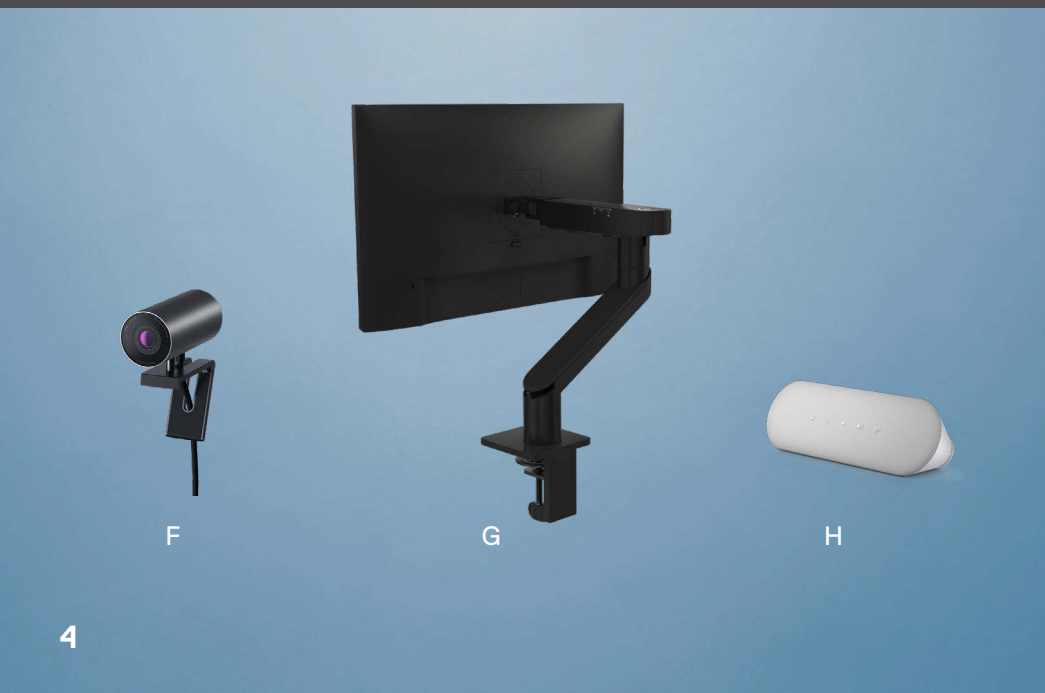


Dell recommended solution

- A. OptiPlex 7000 Micro*
- B. Dell UltraSharp 24 Monitor – U2422H
- C. Dell Micro All-in-One Stand – MFS22 (behind monitor)*
- D. Dell Premier Multi-Device Wireless Keyboard and Mouse – KM7321W
- E. Dell Premier Wireless ANC Headset – WL7022

Solution features

The aesthetically pleasing OptiPlex 7000 Micro is easily tucked away with a choice of versatile mount and stand options to create a space-saving & clutter-free workspace. Create a modular “all-in-one” solution by mounting your PC securely behind your monitor with the fully adjustable, compact Dell Micro All-in-one Stand.



Additional accessories and options

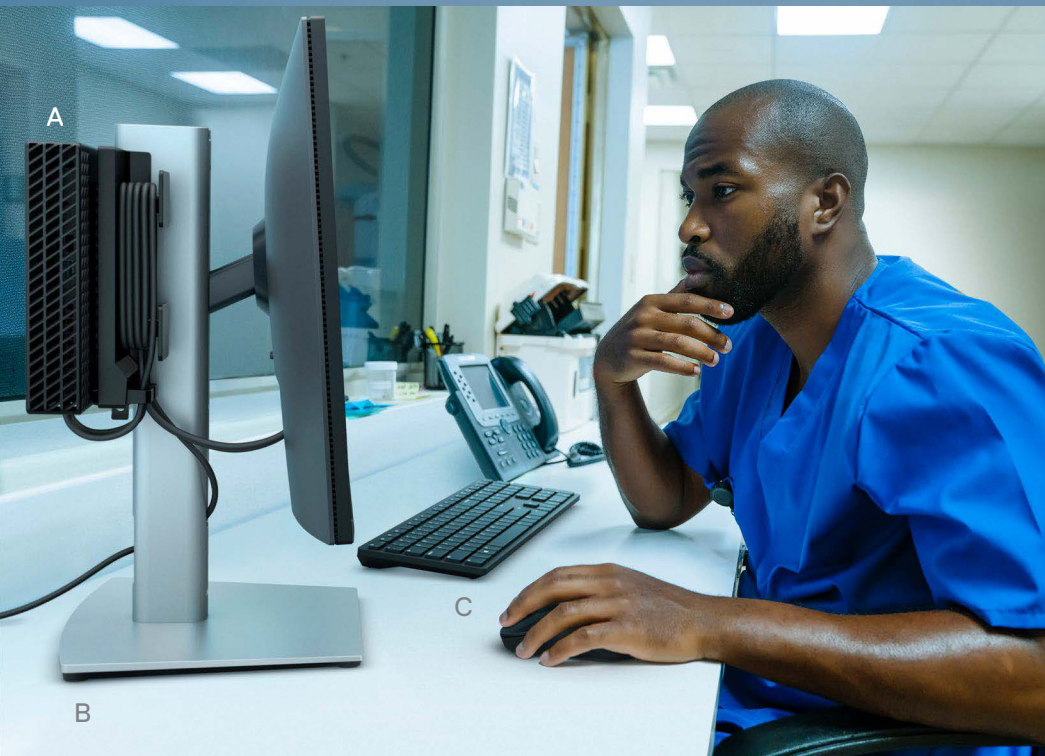
- F. Dell UltraSharp 4K Webcam – WB7022
- G. Dell Single Monitor Arm – MSA20
- H. Dell Speakerphone – SP3022

Some options may not be available in all regions

* Not pictured

Patient registration and administration

SECURELY ACCESS BOTH THEIR APPLICATIONS AND PATIENT RECORDS,
REGARDLESS OF LOCATION OR AVAILABLE STATION.



Dell recommended solution

- A. OptiPlex 3000 Thin Client
- B. OptiPlex Micro AIO Stand – MFS22
- C. Dell Pro Wireless Keyboard and Mouse – KM5221W

Solution features

The space-saving OptiPlex 3000 Thin Client supports up to three displays at 4K resolution and makes it easier to multi-task or simply see the bigger picture. Get the centralized control and security inherent to Dell thin clients and secure access to cloud-based applications and virtual workspaces.



D



E



F

Additional accessories and options

- D. OptiPlex 5400 All-in-One
- E. OptiPlex All-in-One Height Adjustable Stand
- F. Dell Pro Wireless Keyboard and Mouse – KM5221W

Some options may not be available in all regions

Doctor's office

CARE PROVIDERS CAN GET ACCURATE, SECURE AND FAST ACCESS TO PATIENT INFORMATION WITH OUR VERSATILE MOBILE SOLUTIONS.

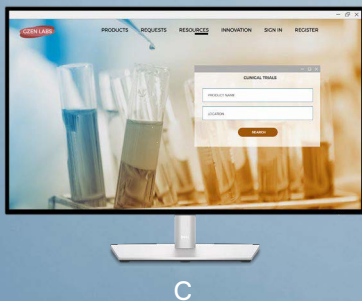


Dell recommended solution

- A. Latitude 7330
- B. Dell Premier Rechargeable Active Pen – PN7522W

Solution details

The beautifully designed Latitude 7330 makes it easy to convert from tablet to laptop mode for use in corridor conversations or while docked in patient meeting rooms.



C



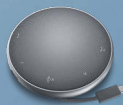
E



F



D



G

Additional accessories and options

- C. Dell UltraSharp 27 4K USB-C Hub Monitor – U2723QE
- D. Dell Multi-Device Wireless Keyboard and Mouse Combo – KM7120W
- E. Dell Thunderbolt™ 4 Dock – WD22TB4
- F. Dell Premier Wireless ANC Headset – WL7022
- G. Dell Speakerphone with Multipoint Adapter – MH3021P

Some options may not be available in all regions

Exam room

INNOVATIVE TECHNOLOGY SOLUTIONS THAT ARE FLEXIBLE, SECURE AND EASY TO MANAGE SO CARE PROVIDERS CAN FOCUS ON THEIR PATIENT'S NEEDS.

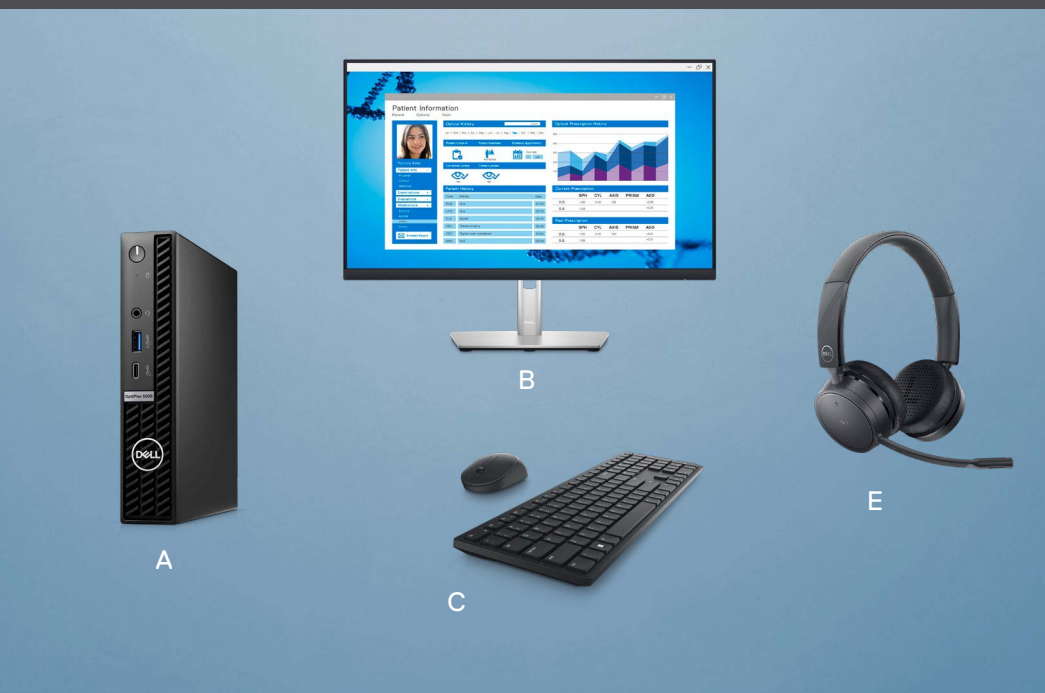


Dell recommended solution

- A. OptiPlex 5000 Micro paired with versatile mounting options
- B. Dell 24 Monitor – P2423D
- C. Dell Pro Wireless Keyboard and Mouse – KM5221W
- D. Medical cart

Solution features

Ultracompact, powerful desktop with flexible mounting options adapts to the needs of clinic and patient rooms. Quickly start up and launch common applications with the built-in AI of Dell Optimizer ExpressResponse.



Additional accessories and options

- E. Dell Pro Wireless Headset – WL5022

Some options may not be available in all regions

Exam room

INNOVATIVE TECHNOLOGY SOLUTIONS THAT ARE FLEXIBLE, SECURE AND EASY TO MANAGE SO CARE PROVIDERS CAN FOCUS ON THEIR PATIENT'S NEEDS.



Dell recommended Medical Cart Solution for Exam Room

- A. OptiPlex 3000 Thin Client with Dell Dual VESA arm mount*
- B. Dell 24 Monitor – E2422H*
- C. Dell Pro Wireless Keyboard and Mouse – KM5221W*

Additional options:

- D. Latitude 3420 configured with Dell ThinOS or Dell Hybrid Client*

Solution features

Configure your OptiPlex 3000 Thin Client with single sign on, a wide variety of mounting, display, security and networking options for the ultimate flexibility in any healthcare environment.



Additional accessories and options

- E. OptiPlex 3000 Thin Client with vertical stand*
- F. Dell UltraSharp 24 Monitor – U2422H (2X)
- G. Dell Dual Monitor Arm – MDA20
- H. Dell Premier Multi-Device Wireless Keyboard and Mouse – KM7321W
- I. Dell Pro Wireless Headset – WL5022

Some options may not be available in all regions

* Not pictured

Medical imaging and diagnosis

THE BEST TOOLS FOR RADIOLOGISTS WHO NEED TO WORK EFFICIENTLY AND CONFIDENTIALLY TO ENABLE CORRECT DIAGNOSIS.

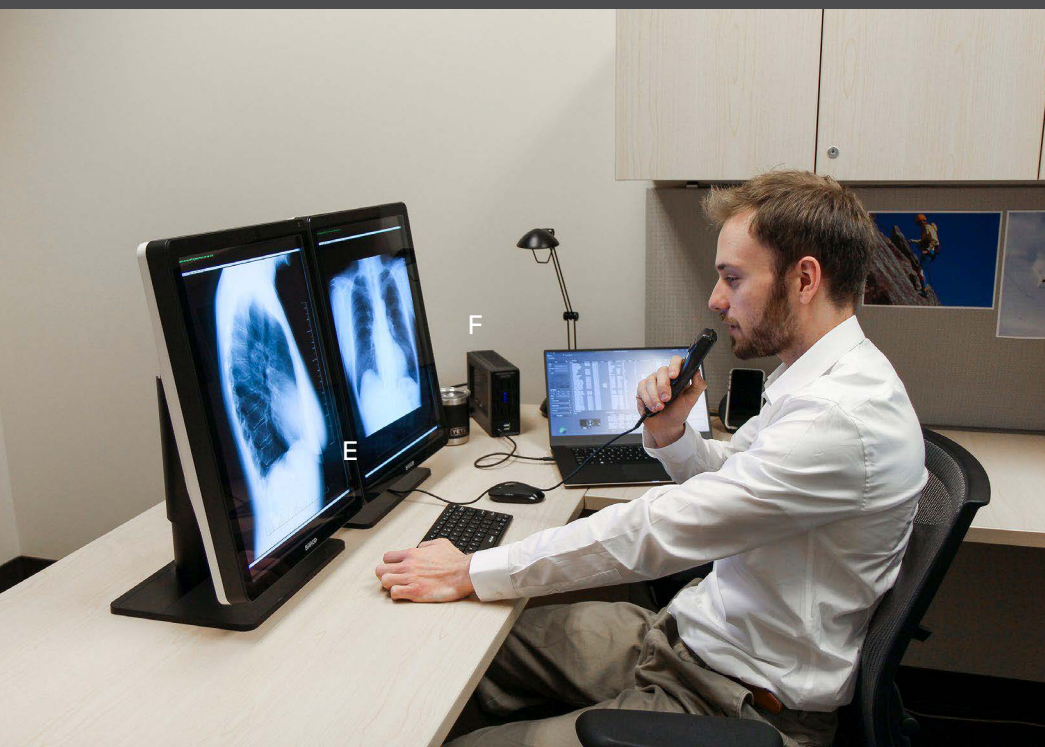


Dell recommended diagnostic solution

- A. Precision 7865 Tower workstation
- B. Barco Coronis Fusion 6MP diagnostic display for general PACS
- C. Barco Eonis MDRC-2321 SNIB clinical review display for navigation head*

Solution features

Dell Precision workstations — the most powerful workstations in the world. Built to power the most intensive applications and power world-class displays from Barco, for ultimate viewing and color accuracy.



Dell recommended home read diagnostic display solution

- D. Precision 7670 workstation*
- E. Barco Nio 3MP Dual-Head Diagnostic Displays for general PACS
- F. Barco VisionTek eGFX Enclosure w/ MXRT-5600

Additional accessories

- G. APC Back-UPS Pro 1500VA Battery Backup & Surge Protector – A6993995*

Some options may not be available in all regions

* Not pictured

Emergency first responder (EMS)

TECHNOLOGY SOLUTIONS FOR EMERGENCY MEDICAL SERVICE AND CARE PROVIDERS WHO NEED TO BE EQUIPPED WITH TOOLS TO PERFORM IN THE MOST DEMANDING SITUATIONS.



Solution features

Trusted rugged technology solutions that help monitor and provide care for patients, in-vehicle or on the go.

Dell recommended solution

A. Latitude 7220 Rugged Extreme Tablet

Additional accessories and options

- B. Rugged tablet dock*
- C. Keyboard cover with kickstand*
- D. Dell rugged battery charger*
- E. Extended input and output module*
- F. Carrying accessories like rigid handle, cross strap and shoulder strap*
- G. Rugged active pen*

Some options may not be available in all regions

* Not pictured

Telehealth

GAIN ON-DEMAND, SECURE ACCESS TO PATIENTS, PROGRAMS AND DATA FROM WHEREVER YOUR PATIENTS MAY BE LOCATED.



Solution features

Our most intelligent and responsive all-in-one with the built-in artificial intelligence of Dell Optimizer, enables ultimate interaction and collaboration.



C



D



E



F

Dell recommended solution

- A. OptiPlex 7400 All-in-One
- B. Dell Premier Multi-Device Wireless Keyboard and Mouse – KM7321W
- C. Dell 24 Monitor – P2423D
- D. Dell Multi-device Wireless Mouse – MS5320W

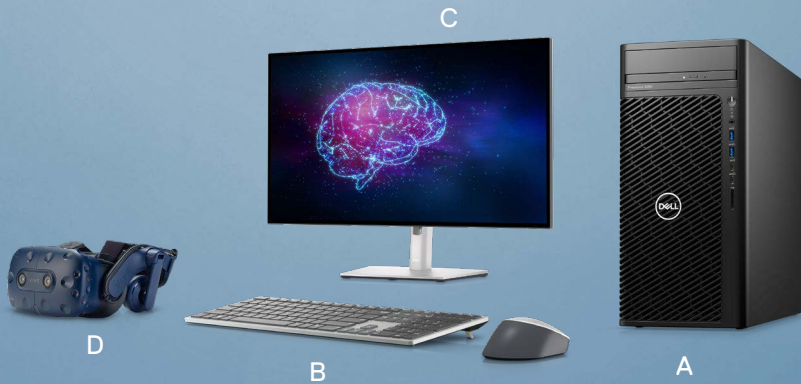
Additional accessories and options

- E. Dell Pro Wireless Headset – WL5022
- F. Dell UltraSharp Webcam – WB7022

Some options may not be available in all regions

Interactive learning

ENTER NEW WORLDS OF LEARNING POTENTIAL WITH A VR-READY SOLUTION FOR MAINSTREAM DESKTOP USERS.

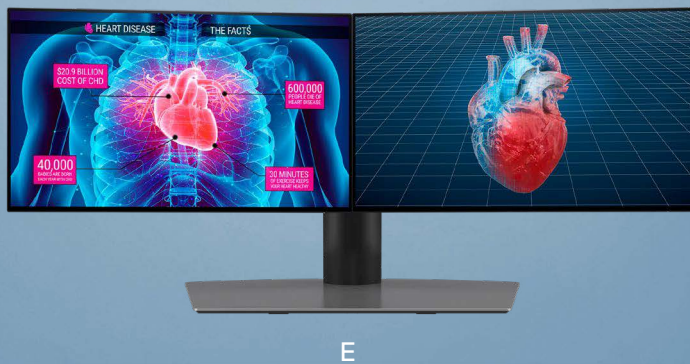


Dell recommended solution

- A. Precision 3660 Tower
- B. Dell Premier Multi-Device Wireless Keyboard and Mouse – KM7321W
- C. Dell UltraSharp 27 4K USB-C Hub Monitor – U2723QE
- D. HTC VIVE Pro Virtual Reality System

Solution features

Enable more immersive experiences with the desktop built to deliver rich virtual reality consumption. The Precision 3660 Tower features high performance graphics options including high-end 215W class graphics card and thrives in interactive learning environments.



Additional accessories and options

- E. Dell Dual Monitor Stand – MDS19

Some options may not be available in all regions

Support and Deployment Services

ProSupport Plus

Upgrade to the most complete support service with ProSupport Plus.
Available with all PC systems.

The ProSupport Plus advantage

- 24/7 hardware and software phone support
- Direct access to in-region ProSupport engineers
- Automatically detects problems and opens trouble tickets
- Automatically predicts issues before they become a problem
- Repair accidentally damaged devices and keep hard drive after replacement

Basic

—
—
—
—
—

ProSupport

X
X
X
—
—

ProSupport Plus

X
X
X
X
X

When compared to key competitors, ProSupport Plus with SupportAssist reduced time to resolve a failed hard drive with:

92%

Up to 92% less time to resolution¹

68%

Up to 68% fewer steps to resolution¹

ProDeploy Plus

Deploy PCs with greater speed and less effort.

Experts

Enjoy unprecedented efficiency thanks to best practices learned from years of experience. Gain up to 56% faster deployments² and \$792 reduced deployment cost per PC.²

Insights

Gain expertise from teams who do this every day. We custom-configure and image units globally every week, and provide project documentation with knowledge transfers.

Ease

Effortlessly deploy PCs by outsourcing to us. You'll have the flexibility to select the level of service that matches your IT staff outsourcing needs, and we perform deployments after hours or on weekends for zero disruptions during business hours. We're also available in 70 countries.

50%

Up to 50% reduced deployment time²

\$792

\$792 reduced deployment cost per PC²

¹Source: Based on a Principled Technologies test report, "Spend Less Time and Effort Troubleshooting Laptop Hardware Failures" dated April 2019. Testing commissioned by Dell, conducted in the United States. Actual results will vary. Full report: <http://facts.pt/L52XKM>

²Source: Based on IDC White Paper commissioned by Dell, "Business Value of Optimized Device Deployment", October 2019. Results derived from a survey of 1000 organizations worldwide. Savings calculated reflect costs associated with IT staff time for deployment-related activities and do not include the list price of ProDeploy Plus. Cost savings in U.S. Dollars. Actual results will vary. Click here for the full report: www.dellEMC.com/idcdeploymentsservicebusinessvalue

DELLTechnologies

