

---

# An Analysis of Business Organizational Structure and Activity from Tax Data

*Tom Petska, Michael Parisi, Kelly Luttrell, Lucy Davitian, and Matt Scoffie  
Internal Revenue Service*

---

## ► Introduction

Studies of businesses based on tax and information returns filed with the Internal Revenue Service (IRS) have generally focused on the financial activities or behaviors of one or more business legal or organizational types. The motives for these studies have generally been: (1) to examine and analyze data on one form of business over time, or (2) to examine the dynamics of shifting from one organizational form to another based on various factors, including incentives (or disincentives) in the Internal Revenue Code (IRC). Studies in IRS's Statistics of Income (SOI) Division have most often been the first type. This approach has contributed to the understanding of the effect of taxation on the business sector, but has not taken into consideration the dynamic and "zero sum" dimensions of business activity--that businesses conduct profit-seeking activities in a variety of legal modes, and that they examine various alternative forms of organizational structure to optimize growth and after-tax profits. The SOI Integrated Business Database (IBD) is being developed to provide evidence that businesses do, in fact, pursue optimal organizational structures. This initiative is an extension of earlier work in SOI, expanded to include Tax Years 1980-2002, incorporating the latest years for which complete SOI data are available.<sup>1-8</sup>

This paper is divided into four sections. The first section briefly provides background information on the tax treatment of business income. The second section briefly summarizes major tax law changes that affected the taxation of business income in the period 1980-2002. The third section presents and analyzes data from annual SOI cross-sectional business studies, and the final section notes some conclusions and plans for future research.

## ► Taxation of Business Income

The tax treatment of the many organizational forms is complicated and varies considerably; so, only brief summaries of Federal taxation of business income are provided. The major legal forms of economic organiza-

tion are: corporations, partnerships, and nonfarm sole proprietorships.

**Corporations**--Corporations, in this analysis, are subdivided into those taxed at corporate rates (taxable or C corporations), and those electing to be taxed through their shareholders at individual income tax rates. The latter group includes Subchapter S corporations (or simply S corporations), Regulated Investment Companies (RICs), and Real Estate Investment Trusts (REITs), all of which are not taxed at the enterprise level but whose income similarly flows through to their owners, where it is subject to tax. C or taxable corporate income is generally taxed directly at the business level, then again at the shareholder level, at the applicable rates on dividend income. However, certain provisions in the Federal tax code lessen this effect. First, the corporate income potentially taxable at the shareholder level excludes the taxes paid by the corporation; so, income distributed to corporate shareholders is only taxable on the after-tax profits earned by the corporation. Second, the after-tax income of the corporation is not taxable at the shareholder level until it is paid out in dividends or until the shareholder realizes capital gains by selling shares that appreciated in value.

Subchapter S corporations are usually small, closely held corporations that are not taxed directly. With some exceptions, their incomes are subject to tax only at the owner level, much like the flowthrough treatment of partnerships. Owners of S corporations report their pro rata shares of income or loss on their own tax returns. Although S corporations have attractive features, they do face restrictions, including limitations on the number and type of shareholders and on the classes of stock permitted, and prohibition of foreign or corporate ownership. Similar to S corporations, the profits of RICs and REITs are not taxed at the enterprise level but flow through to their owners, where they are subject to tax.

**Partnerships**--Like an S corporation, a partnership serves as a conduit between a business and its owners,

in this case, its partners. The partnership entity is thus not taxed directly. Each partnership files an annual information return, which includes an income statement, balance sheet (in most cases), and a schedule of allocations or distributions made to each partner. Partners are predominately, though not exclusively, individuals who report their allocated shares of income and expenses on their own tax returns. Partnerships may be general partnerships, limited partnerships, or limited liability companies (LLCs). General partnerships, and general partners as well, face personal liability limited only by their personal resources and the applicable bankruptcy laws. Limited partners are more like corporate shareholders, with liability limited to the amount invested and with no active participation in management of the business.

A relative newcomer among for-profit businesses is the limited liability company, or LLC. These entities have the limited liability of corporations, but are taxed in the partnership model--income and expenses flow through the LLC to the owners, who are taxed on their pro rata shares. Unlike S corporations, however, LLCs do not have the extensive restrictions on the number and composition of owners. LLCs report their financial activities on their applicable business tax forms, most commonly the partnership information return (Form 1065), and indicate that they are filing as an LLC. The SOI partnership program began identifying these entities for Tax Year 1993. To provide some perspective on their prevalence and the scope of their financial activities, summary data on partnership LLCs are included in the next section.

**Sole proprietorships**--The profits of nonfarm sole proprietorships are taxed only at the personal (i.e., owner) level. The income statement of sole proprietorships, which summarizes the income and expenses of the business, is completed on Schedule C (or C-EZ) of the owner's individual income tax return. The net income or loss from the business is added to personal income from all other sources and taxed at the applicable individual income tax rates. In effect, the proprietorship also acts as a conduit through which the income of the business is passed through to the business owner where it is subject to tax.

**Summary**--While it is generally presumed that all corporate income is subject to double taxation, at both the entity and shareholder levels, the profits of S corporations, RICs, and REITs are all untaxed at the entity level and flow through to the owners or shareholders, similar to the treatment for partnerships. As a result, in the third section of the paper, we examine profits for each organizational type and subsequently aggregate data from all entities with flowthrough characteristics (including proprietorships) and compare them to C corporations that are taxed directly and whose incomes are potentially subject to double taxation.

### ► Tax Law Changes

The Tax Reform Act of 1986 (TRA86), the most comprehensive revision of the Internal Revenue Code since 1954, had a major impact on business decisions in the period after 1986 through broadening of the tax base of both individuals and corporations, tightening the corporation "alternative minimum tax," limiting losses from passive activities, and repealing the long-term capital gain exclusion. The most marked effect has been on the changes made to the individual and corporate marginal tax rates. In pre-TRA86, the highest individual rate (50 percent) exceeded the highest corporation rate (46 percent) by 4 percentage points. TRA86 reversed this trend, starting in 1987 and continuing with the phase-in of lowered rates in 1988-1990 of 34 percent for corporations and 28 percent for individuals. However, for 1991 and 1992, this difference between the corporate and individual marginal rates was cut in half when the top rate for the latter was increased to 31 percent.

Beginning for Tax Year 1993, the top individual rate increased to 39.6 percent, surpassing the rate of 35 percent for the highest corporation incomes, and restoring the pre-TRA relationship where the highest individual rate exceeded the top corporate rate. In fact, the difference of 4.6 percentage points between the individual rate and the corporation rate is similar to the pre-TRA86 difference of 4 percentage points, providing a reversal of the post-TRA incentive to switch to business types taxed solely at the individual level. However, this incentive declined with the lowering of top individual rates beginning for 2001.

The Small Business Job Protection Act of 1996 (SBJPA) made several noteworthy changes that affected S corporation filings. First, the Act increased the maximum number of shareholders from 35 to 75. Second, it enabled financial institutions that did not use the reserve method of accounting for bad debts to make an S election. Third, small business trusts electing to be S corporations were permitted to be shareholders in an S corporation. Finally, restrictions on the percentage of another corporation's stock that an S corporation might hold were eliminated, enabling S corporations to make an election to treat the assets, liabilities, income, deductions, and credits of wholly owned subsidiaries as those of the parent S corporation.

Even though the SBJPA eased restrictions on S corporations, the number of S corporation entities has not grown as rapidly as partnership limited liability companies (LLCs). The IRS ruled in late 1988 (Revenue Ruling 88-76, 1988-2 C.B.360) that any Wyoming LLC would be treated as a partnership, and the door was opened for other States to consider LLC legislation. By 1993, 36 States allowed LLCs as a legal entity, and that number grew to 46 States plus the District of Columbia a year later. By 1997, all 50 States and the District of Columbia had enacted LLC legislation. The "check-the-box" regulations, implemented by IRS in January 1997, relaxed the requirements for LLCs to obtain a favorable partnership tax classification, leading to a wider acceptance of LLCs.

### ► Analysis of Business Data

The SOI Integrated Business Dataset (IBD) has been compiled at the table level from the annual SOI cross-sectional studies of corporations (C and S corporations), partnerships, and nonfarm sole proprietorships for 1980-2002.<sup>9</sup> Data from these annual statistical studies are generally publicly available and are published in a variety of SOI reports. (See the References section.) They represent weighted estimates of U.S. totals by year for each legal form or organizational type. The database combines data from these types of organizations for a 22-year period to enable examination of changes in business composition. The IBD is composed of 3 subsets; (1) selected financial data on businesses for all industries for 1980-2002 (Table 1); (2) selected financial data by

size of business receipts for 1998-2002 (Tables 2A-2E); and selected financial data on businesses for 21 North American Industrial Classification System (NAICS) sectors for 1998-2002 (Tables 3A-3E). Although some of the data in the IBD have already been published, this is the first time that they have been compiled for this duration, and work on analysis of significant trends and findings is just beginning.<sup>10</sup>

This section is divided into three parts. First, summary data by organizational type for 1980-2002 are presented and analyzed. In the next two subsections, trends in the data between 1998 and 2002 by receipt size and industrial sector are examined. The period for the industry data has been restricted since, beginning with 1998, all SOI business studies adopted the new NAICS industrial classification system. Previously, SOI business studies, and most economic statistics produced by Federal agencies, used an industry coding system based on the Standard Industrial Classification (SIC) System. Although NAICS has substantially improved coverage on newer, emerging industries, there is a major discontinuity between 1997 and 1998, and, for some industries, it is difficult or even impossible to derive a consistent time series.

### ► Data for All Industries, 1980-2002

The all-industry data compiled and discussed in this section include: the number of entities, total and business receipts, net income (less deficit), net income, and deficit. Although this is limited financial detail, these data comprise a consistent time series for the 22-year period for all types of businesses. Table 1 presents these data in its most detailed format, while Figures A-G highlight some of the most significant trends.<sup>11</sup>

**Number of Business Entities**--The number of businesses doubled between 1980 and 2002, from 13 million in 1980 to over 26 million in 2002. Overall, the growth was relatively steady, with increases in all years, including even those with declines in real GDP (1980-1982, 1990-1991, and 2000-2001). However, unlike the steady overall growth in the number of entities, the composition of businesses by organizational type varied considerably. Figure A shows the percent-

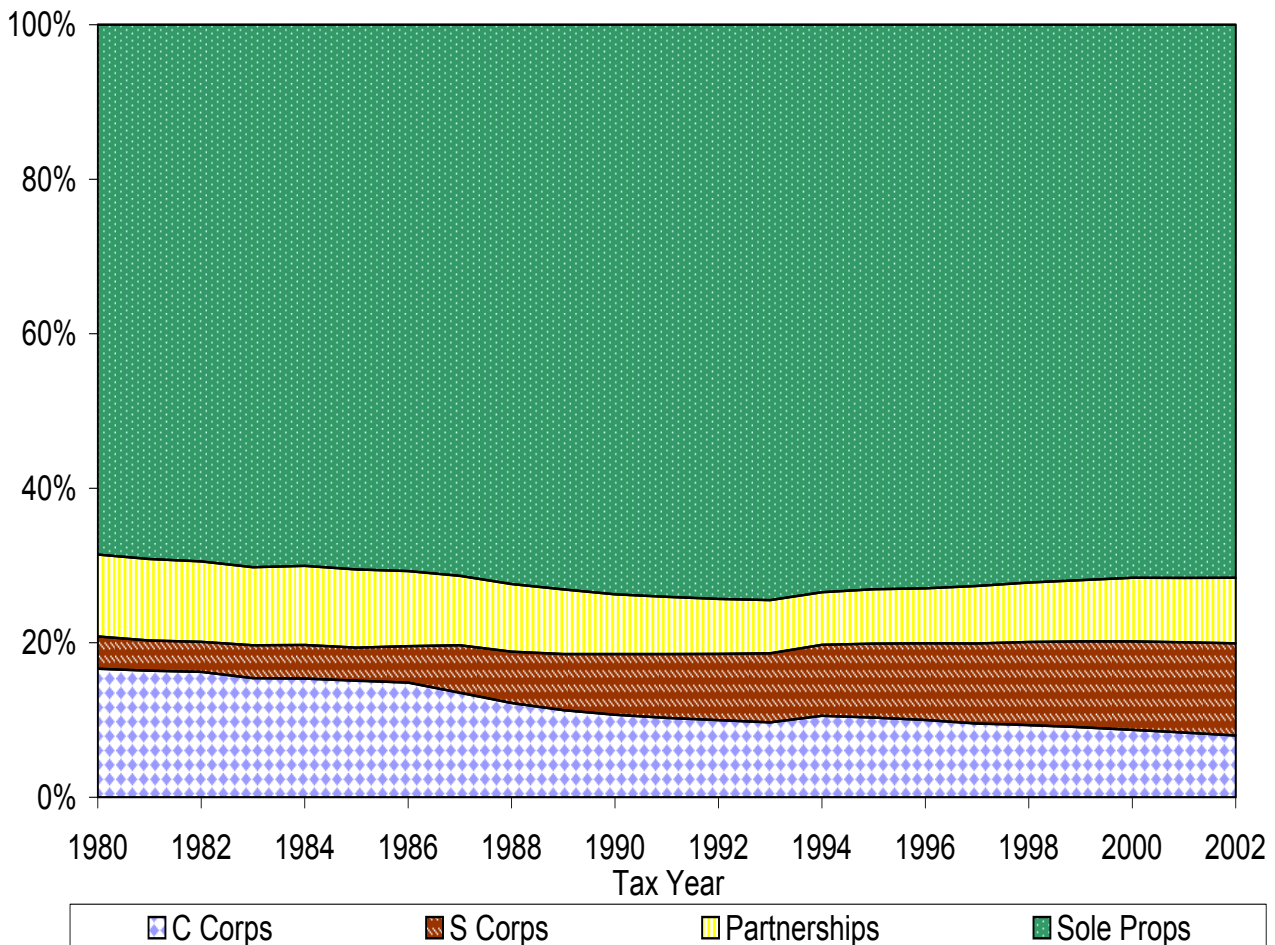
age composition in the number of business entities for C corporations, S corporations, partnerships, and sole proprietorships.

Sole proprietorships were the largest and most stable component of business entities, accounting for between 68.6 percent and 74.5 percent of overall business entities in all years and growing by 3 percentage points in the 22-year period, from 68.6 percent in 1980 to 71.6 percent in 2002. C corporations, on the other hand, accounted for 16.6 percent of business entities in 1980, but their percentage fell steadily to 8.0 percent in 2002. S corporations accounted for only 4.2 percent

of business entities in 1980, but their share increased substantially, particularly in the period following the 1986 Tax Reform, to 11.9 percent in 2002. Partnerships were also a relatively stable portion of the business entity types, declining modestly from 10.6 percent in 1980 to 8.5 percent in 2002. While the number of partnerships increased between 1980 and 1988, their proportion of the overall number of business entities declined, mainly due to the higher growth rates of S corporations and proprietorships.

Figure B presents annualized growth rates in the number of business entities with some additional detail

**Figure A--Composition of the Number of Businesses, Tax Years 1980-2002**



by business organizational type.<sup>12</sup> Overall, the number of businesses increased at a 3.2-percent annual rate for the 22-year period, but this percentage varied by business type. Although the total number of corporations showed an annual 3.0-percent increase, this was composed of a -0.1-percent annual decline for C corporations and a robust 8.0-percent annual increase by S corporations. C corporations had 2-percent annual increases in 1980-1987 and 1993-1997 but declines in both 1987-1993 and 1997-2002. S corporations increased in all periods, though the annual rate of increase declined steadily from 10.4 percent in the 1980-1987 period, to 6.4 percent for 1993-1997, and 5.0 percent for 1997-2002. Partnerships had an overall 2.2-percent growth rate for the 22-year period but declined in number between 1987-1993 before restoring growth between 4 percent to 5 percent for the later periods. Complete data for all types of partnerships are unavailable for years prior to 1993 but indicate a clear pattern between 1993 and 2002. In these years, general partnerships declined in number at an increasing rate, while limited partnerships grew at increasing rates. However, these data are dominated by the 75.1-increase for LLC's in the 1993-1997 period, which slowed

considerably but still grew at a robust 19.9 percent for 1997-2002. As noted, sole proprietorships were the most stable entity type with an overall rate of growth of 3.4 percent, which was comprised of an annual growth rate of 5.5 percent for 1980-1987 that steadily declined to 1.9 percent for 1997-2002.

Since most types of business income are essentially taxed at the individual level, a total for all business types other than C corporations was computed and is also shown in Figure B. This aggregation includes the data for 1120-RICs, 1120-REITs, S corporations, all types of partnerships, and sole proprietorships--essentially, all business organizational forms except for C corporations. Since proprietorships dominate the statistics on the number of business entities and were also a relatively stable component, it is not surprising that the growth pattern for the aggregation of businesses less C corporations mirrored that of proprietorships. These entities grew at an annual rate of 3.7 percent for the entire period, and the rate of growth steadily declined from 5.4 percent for the earliest period (1980-1987) to a low of 2.6 percent for 1997-2002. However, they avoided the reductions

**Figure B--Annual Growth Rates for the Number of Businesses, Tax Years 1980-2002**

Form of business	Annual Growth Rates (Percent)				
	Total interval, 1980 to 2002	Tax Years			
		1980 to 1987	1987 to 1993	1993 to 1997	1997 to 2002
	( 1 )	( 2 )	( 3 )	( 4 )	( 5 )
All business types.....	3.2	4.9	2.5	2.6	2.2
Corporations.....	3.0	4.1	1.6	4.3	2.2
C corporations.....	-0.1	2.0	-3.1	2.2	-1.4
1120-RIC and 1120-REIT.....	9.0	11.5	10.6	7.8	4.4
S corporations.....	8.0	10.4	8.7	6.4	5.0
Partnerships.....	2.2	2.5	-1.9	4.5	4.9
General.....	( 1 )	( 1 )	( 1 )	-2.1	-5.0
Limited.....	( 1 )	( 1 )	( 1 )	4.3	6.5
LLC.....	( 1 )	( 1 )	( 1 )	75.1	19.9
Sole proprietorships.....	3.4	5.5	3.2	2.0	1.9
Total less C corporations.....	3.7	5.4	3.2	2.7	2.6



in numbers that C corporations had in both 1987-1993 and 1997-2002.

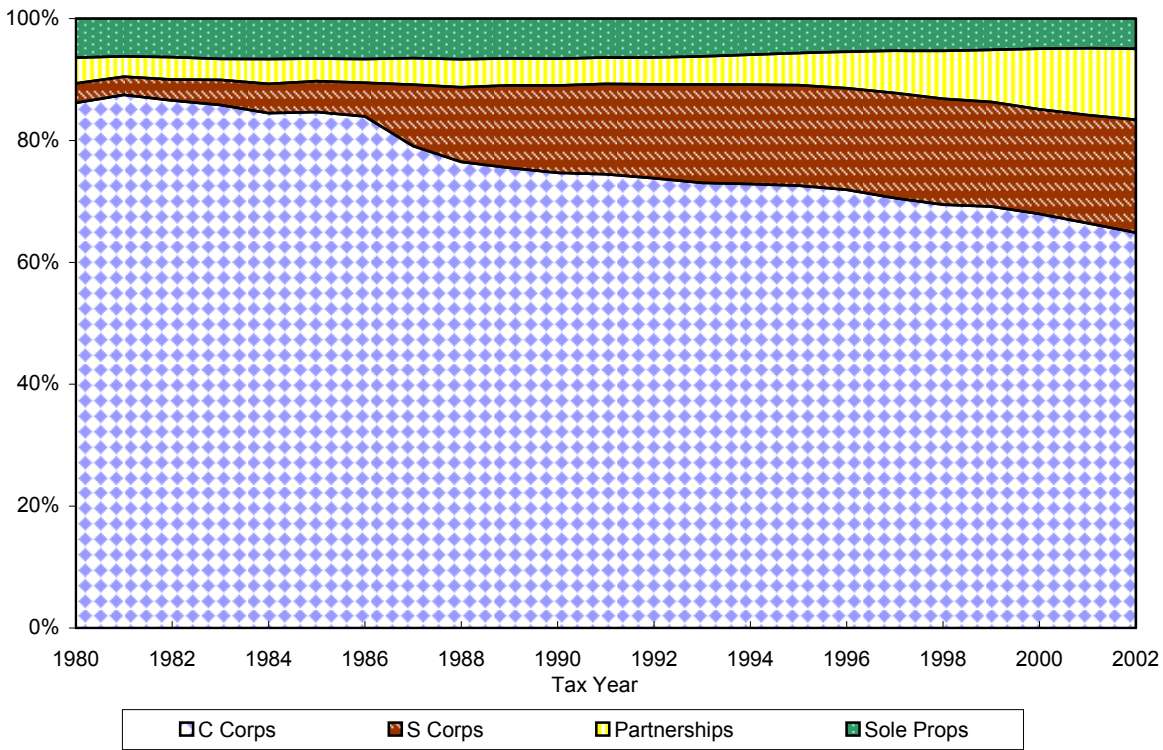
**Business Receipts**--Unlike data on the numbers of business entities, the business receipts data include double counting, since intercompany sales and purchases are included. However, they are still an important metric of business activity by organizational type. Data on the composition and growth of business receipts by type of entity are presented in Figures C and D, respectively. C corporations dominated business receipts for the 22-year period, although their share has declined throughout the period from a high of 87.5 percent for 1981 to 64.9 percent for 2002.

So, where did this share of C corporation business receipts go? First, S corporations increased their share of receipts from about 3 percent for the 1980-1982 period to 18.5 percent for 2002. Although the rate of growth

was steady for most years, between 1986 and 1987, the S corporation share jumped from 5.5 percent to 10.1 percent in this one year, with enactment of the 1986 Tax Reform Act, which lowered the top marginal rate on business income taxed at the individual rate in comparison to the top marginal tax rate on corporate profits. Although the share of business receipts accruing to proprietorships declined from 6.4 percent to 5.0 percent in the period, the share of partnerships grew from 3 percent - 4 percent in the earliest years to 11.6 percent for 2002.

As shown in Figure D, overall business receipts grew at an annual rate of 5.3 percent over the 22-year period, peaking at 7.5 percent for 1993-1997.<sup>12</sup> Similarly, corporation receipts grew at a 5.0-percent annual rate for the entire period and also peaked in the 1993-1997 period at 7.1 percent. Although C corporations held the dominant share of receipts, receipts of S corporations grew at a 13.3-percent rate throughout the period, peaking at 21.9

**Figure C--Composition of Business Receipts, Tax Years 1980-2002**



**Figure D--Annual Growth Rates for Business Receipts, Tax Years 1980-2002**

Form of business	Annual Growth Rates (Percent)				
	Total interval, 1980 to 2002	Tax Years			
		1980 to 1987	1987 to 1993	1993 to 1997	1997 to 2002
	( 1 )	( 2 )	( 3 )	( 4 )	( 5 )
<b>All business types</b> .....	5.3	5.5	4.3	7.5	4.6
<b>Corporations</b> .....	5.0	5.5	4.3	7.1	3.6
<b>C corporations</b> .....	4.0	4.3	2.9	6.7	2.9
<b>S corporations</b> .....	13.3	21.9	12.1	9.2	6.0
<b>Partnerships</b> .....	9.9	6.0	5.2	17.8	15.0
<b>General</b> .....	( 1 )	( 1 )	( 1 )	6.4	0.7
<b>Limited</b> .....	( 1 )	( 1 )	( 1 )	18.1	15.7
<b>LLC</b> .....	( 1 )	( 1 )	( 1 )	90.7	26.7
<b>Sole proprietorships</b> .....	4.2	5.7	3.6	3.5	3.4
<b>Total less C corporations</b> .....	9.6	11.4	8.5	9.7	8.1

<sup>1</sup> Data not available for all years.

percent between 1980-1987 before steadily declining. Partnerships had an overall 9.9-percent rate of growth in business receipts for the 22-year period, which was led by increases of 17.8 percent and 15.0 percent during the 1993-1997 and 1997-2002 periods, respectively. As for the entity data, the growth in partnership data was led by the increases for LLC's, which had 90.7-percent and 26.7-percent annual growth rates for the periods 1993-1997 and 1997-2002, respectively. Proprietorships exhibited the most stable growth, with an overall rate of 4.2 percent, which started at 5.7 percent in the 1980-1987 period and declined steadily to 3.4 percent in the latest years. Unlike for the number of entities, proprietorships do not dominate the receipts data; so, the pattern for the total excluding C corporations was much more like those for S corporations and partnerships, with 9.6-percent growth throughout, ranging from 11.4 percent in the earliest period and staying above 8 percent for all later periods.

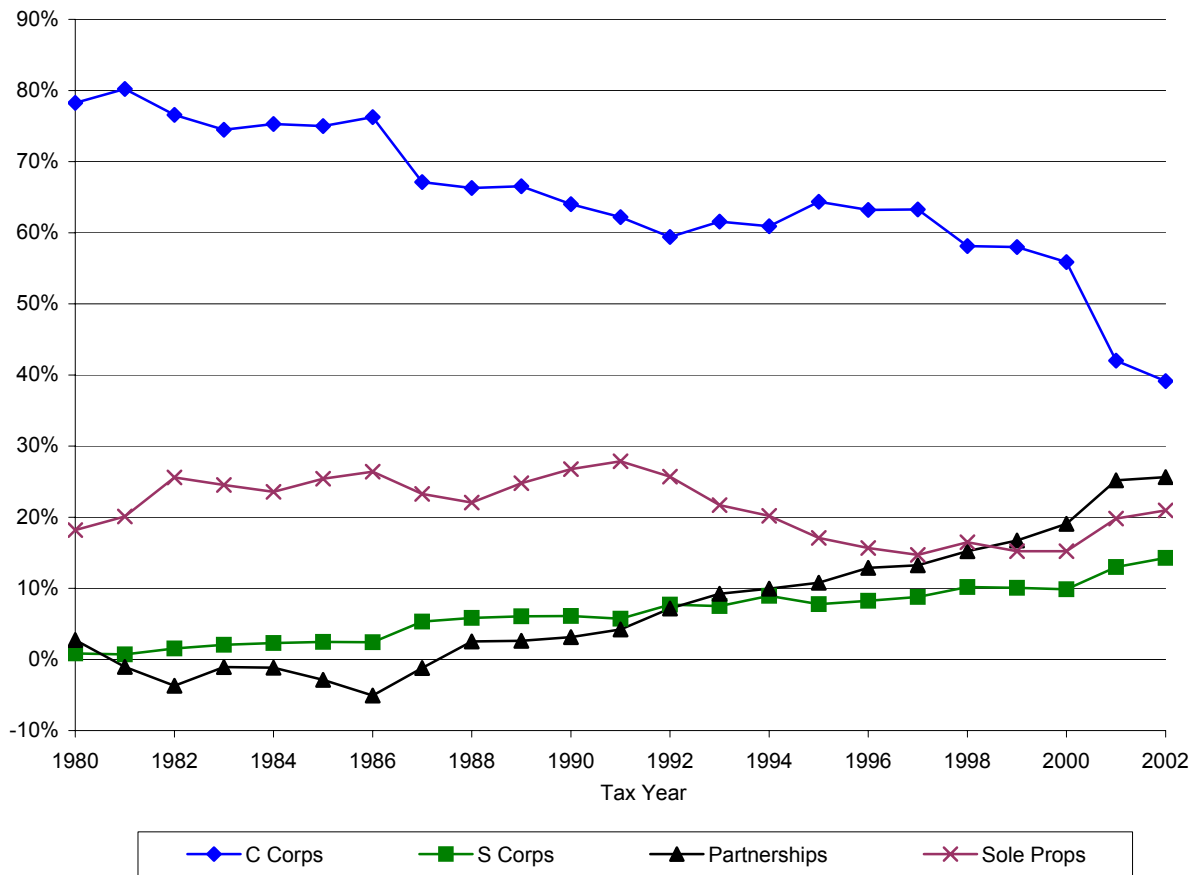
**Net Income (Less Deficit)**--Figures E and F show data on the composition and growth of net income (less deficit), respectively.<sup>13</sup> Overall, as for business receipts, data for net income (less deficit) show the dominance of C corporations, although their share of the total declined precipitously, plummeting from 80 percent for 1980-

1981 to 39.1 percent for 2002. This is a very significant turn of events since revenue from the corporation income tax has been a significant component of overall tax collections.<sup>14</sup> This phenomenon is even more noteworthy considering the relative stability of corporate statutory tax rates in the post-TRA period.

Once again, profits of proprietorships were the most stable of any entity type, increasing from 18.2 percent for 1980 to 20.9 percent for 2002; however, the proprietorship share had increased to 25.6 percent for 1982 and stayed above 20 percent through 1994 before bottoming out in 1997. The flowthrough entities, S corporations and partnerships, together accounted for less than 2 percent of net income (less deficit) for 1981-1986, partly because partnerships had losses in all of these years. However, beginning with 1987, their combined net income (less deficit) grew rapidly from about 4 percent for 1987 to nearly 40 percent for 2002, a tenfold increase in just 15 years.

Concerning the growth rates for net income (less deficit), overall business had profits increasing at increasing rates in all of the pre-1997 periods before falling at a 3.7-percent annual rate in the 1997-2002 period, largely due to corporate profit declines in the 2001-2002 eco-

**Figure E--Composition of Business Net Income (Less Deficit), Tax Years 1980-2002**



conomic downturn.<sup>12</sup> C corporation profits had a similar, though more prominent trend, with steady increases peaking at 12.5 percent for the 1993-1997 period before falling at an annual 17.1-percent rate for 1997-2002. The flowthrough entities, S corporations and partnerships, both had substantial growth in profitability, with overall 19.5-percent and 15.9-percent annual rates of growth throughout the 22-year period, respectively. S corporation profits increased at over 32 percent for the 1980-1987 period and stayed in the double-digit range, until dropping to a modest 3.6-percent rate of increase for 1997-2002. Partnership had overall losses from 1981 through 1987, became profitable in 1988, and then had increases of over a 20-percent level for 1993-1997, before dropping to 9.5 percent for 1997-2002.

Once again, proprietorships were the most stable component experiencing overall growth in profits of

6.3 percent for the entire period, with growth of 9.3 percent for 1980-1987 that steadily declined to 3.4 percent for the 1997-2002 period. For entities excluding C corporations, profitability growth patterns mirrored a combination of the rapid profit growth in the earlier periods of the flowthrough entities with the greater stability of proprietorships. Overall, profit growth was 11.5 percent for the entire 22-year period, with double-digit growth through 1997 before declining to 3.3 percent for 1997-2002.<sup>15</sup>

**Deficits**--Information on business losses or deficits is shown in Figures G and H for all entity types. C corporation losses ranged from about 48 percent to just under 63 percent for the entire period, substantially lower than the percentages for receipts and profits. The only years that C corporation losses exceeded 60 percent of the total were for the last 3 years, 2000-2002, a period



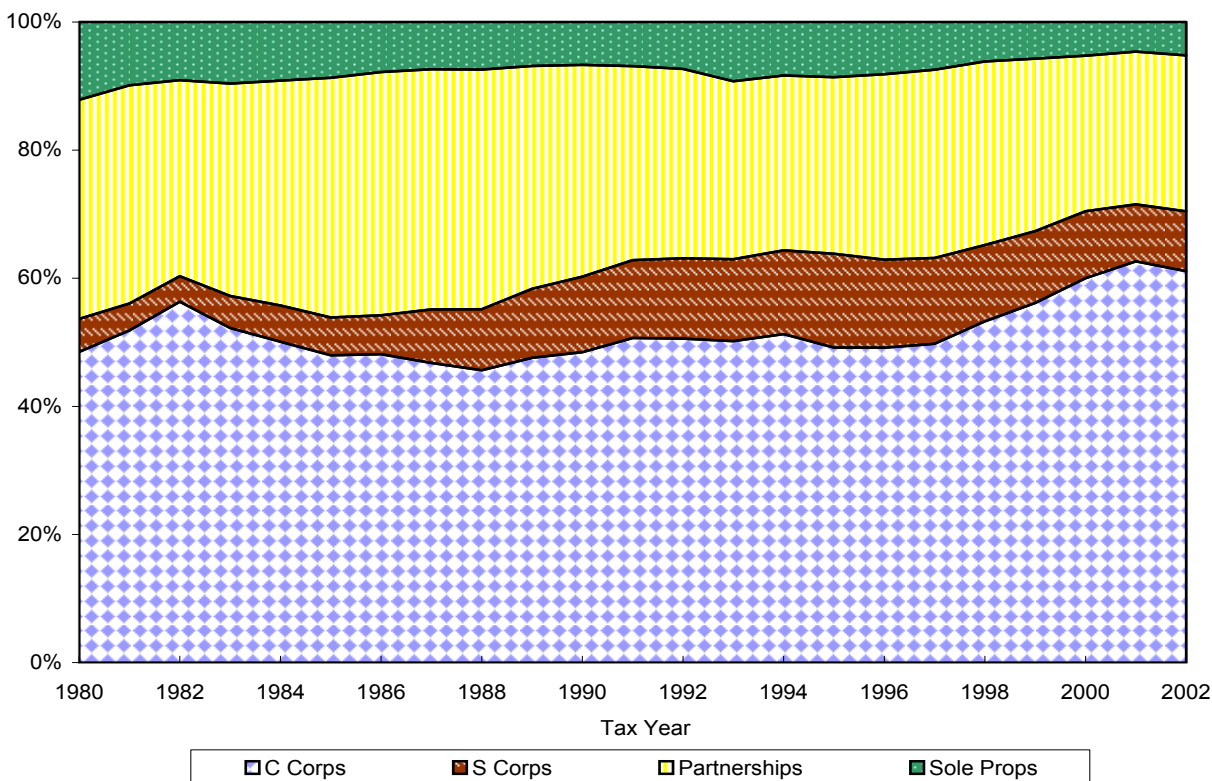
**Figure F--Annual Growth Rates for Business Net Income (Less Deficit), Tax Years 1980-2002**

Form of business	Annual Growth Rates (Percent)				
	Total interval, 1980 to 2002	Tax Years			
		1980 to 1987	1987 to 1993	1993 to 1997	1997 to 2002
	( 1 )	( 2 )	( 3 )	( 4 )	( 5 )
All business types.....	5.8	5.8	8.0	14.5	-3.7
Corporations.....	4.2	4.5	7.4	15.7	-9.4
C corporations.....	0.4	0.8	6.4	12.5	-17.1
1120-RIC and 1120-REIT.....	10.7	18.4	5.7	24.0	-4.8
S corporations.....	19.5	32.3	16.8	20.9	3.6
Partnerships.....	15.9	( <sup>2</sup> )	( <sup>2</sup> )	23.1	9.5
General.....	( <sup>1</sup> )	( <sup>1</sup> )	( <sup>1</sup> )	11.8	2.7
Limited.....	( <sup>1</sup> )	( <sup>1</sup> )	( <sup>1</sup> )	42.8	13.1
LLC.....	( <sup>1</sup> )	( <sup>1</sup> )	( <sup>1</sup> )	104.3	20.9
Sole proprietorships.....	6.3	9.3	6.6	4.4	3.4
Total less C corporations.....	11.5	11.7	14.9	16.5	3.3

<sup>1</sup> Data not available for all years.

<sup>2</sup> Value not computed due to negative values.

**Figure G--Composition of Business Losses, Tax Years 1980-2002**



**Figure H--Annual Growth Rates for Business Losses, Tax Years 1980-2002**

Form of business	Annual Growth Rates (Percent)				
	Total interval, 1980 to 2002	Tax Years			
		1980 to 1987	1987 to 1993	1993 to 1997	1997 to 2002
	( 1 )	( 2 )	( 3 )	( 4 )	( 5 )
All business types.....	8.5	8.7	4.2	5.4	15.7
Corporations.....	9.7	12.3	2.6	5.4	18.0
C corporations.....	9.5	11.4	1.5	5.4	19.4
1120-RIC and 1120-REIT.....	23.6	15.0	29.7	15.8	34.5
S corporations.....	11.0	18.9	7.3	4.7	9.6
Partnerships.....	6.9	13.3	-4.6	7.1	11.7
General.....	( 1 )	( 1 )	( 1 )	-4.6	-0.2
Limited.....	( 1 )	( 1 )	( 1 )	3.6	4.3
LLC.....	( 1 )	( 1 )	( 1 )	83.7	26.7
Sole proprietorships.....	4.6	4.8	4.2	0.3	8.4
Total less C corporations.....	7.3	5.6	7.4	5.4	11.1

<sup>1</sup> Data not available for all years.

that included three quarters of decline in real GDP. Other recessionary periods seemed to have had less effect on the C corporation share of losses. S corporation losses grew starting after 1980, peaking in 1995 at 14.6 percent, before beginning a steady decline to around 9 percent for 2001 and 2002.

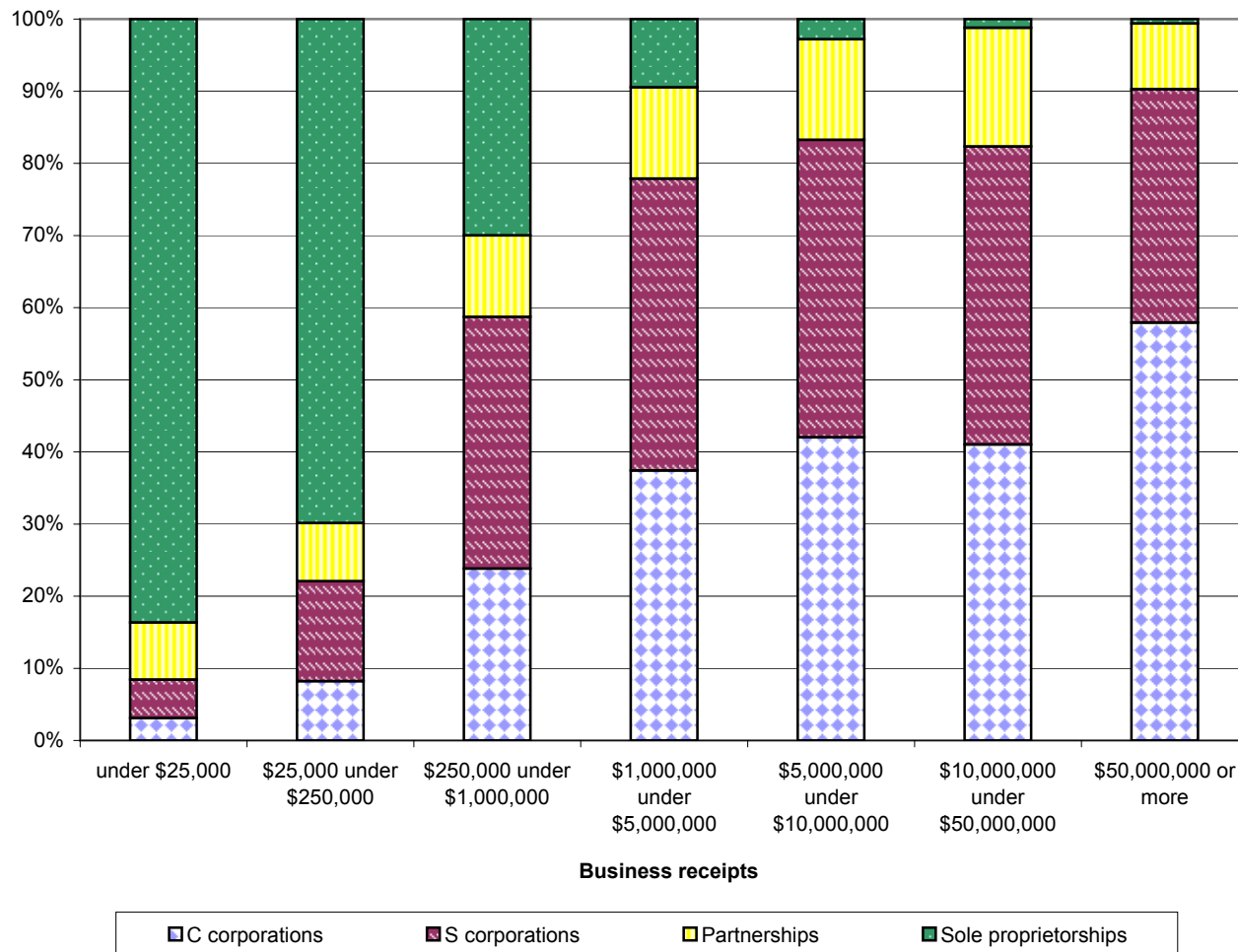
Interestingly, partnerships have had a substantial share of deficits throughout the 22-year period, growing from the mid-30 percents in the pre-TRA period, peaking at 47 percent for 1987 and 1988, before beginning a gradual decline to the low 20-percent range in the 2000-2002 period. Clearly, the TRA passive loss limitations had an effect. Proprietorships once again held a stable but small share of losses, which peaked for 1980, and gradually declined throughout the period to about 5 percent for the 2000-2002 period.

From a growth perspective, overall losses, which increased at nearly 9 percent in the 1980-1987 period, declined to around 5 percent from 1987-1997, then jumped to over 15 percent in the 1997-2002 period.<sup>12</sup> C corporations had a similar pattern, though growth in deficits was larger in periods of large deficit growth and smaller in periods when deficits grew at slower rates, im-

plying more stability for the other types of entities. For businesses other than C corporations, losses averaged 7.3 percent over the entire period, ranging between 5 percent and 7 percent during 1980-1997 before increasing to 11.1 percent for the 1997-2002 period. S corporations had an 18.9-percent increase for 1980-1987, but the growth in losses dropped for 1987-1993 and again for 1997-1997 before increasing to nearly a 10-percent rate for 1997-2002. For partnerships, losses increased in all periods, with the exception of the 1987-1993 period, where the post-TRA passive loss limitations disallowed an increasing share of partnership losses to offset other (positive) income.

► **Data by Size of Business Receipts, 1998-2002**

In this section, we focus on business activity during the period of 1998 through 2002 by size of business receipts. As noted, selected financial data by size of business receipts for 1998-2002 are included in Tables 2A-2E.<sup>11</sup> When the data are segmented by size of business receipts, some notable characteristics of business composition are apparent. Composition percentages on the number of businesses by size of business receipts

**Figure I--Composition of Number of Businesses by Size of Business Receipts, Tax Year 2002**

are shown for Tax Year 2002 in Figure I, while business receipts and net income (less deficit) by size of business receipts are shown in Figure J.

Overall, the numbers of business entities are dominated by small proprietorships, particularly those with receipts under \$1 million. C corporations, on the other hand, comprise less than 25 percent of business entities for each size-class under \$1 million, but their share grows from 37 percent to nearly 58 percent with increasingly larger receipt size-classes. The flowthrough entities, S corporations and partnerships, show their largest composition shares in the middle receipt size-classes. S corporations account for between 35 percent-41 percent

of entities for all classes between \$250,000 and \$50 million, and partnerships also have their largest composition percentages in these mid-sized receipt classes.

From Figure J, and as previously discussed, C corporations dominate activity in business receipts, accounting for nearly 65 percent of receipts for 2002. However, their share of receipts is strongly associated with size of receipts. The smallest C corporations account for only 2 percent of receipts, but this share grows rapidly to nearly 81 percent for businesses with \$50 million or more in business receipts. As with data on the numbers of entities, the flowthrough businesses show their largest composition shares in the middle size-classes, with their

**Figure J--Business Receipts and Net Income (Less Deficit) by Size of Business Receipts, Tax Year 2002**

[Money amounts are in billions of dollars]

Income item and type of business	Business Receipts							
	Total	under \$25,000	\$25,000 under \$250,000	\$250,000 under \$1,000,000	\$1,000,000 under \$5,000,000	\$5,000,000 under \$10,000,000	\$10,000,000 under \$50,000,000	\$50,000,000 or more
	(1)	(2)	(3)	(4)	(5)	(6)	(7)	(8)
<b>Business receipts:</b>								
All businesses.....	20,741.0	94.6	641.8	1,070.8	1,876.7	908.3	2,311.6	13,837.2
C corporations.....	13,455.8	2.3	72.3	275.5	732.0	378.9	930.3	11,064.5
S corporations.....	3,841.3	3.5	123.1	402.3	775.7	389.1	1,028.6	1,119.0
Partnerships.....	2,414.2	1.7	34.2	97.1	216.4	114.6	325.0	1,625.1
Sole proprietorships.....	1,029.7	87.2	412.2	295.8	152.5	25.7	27.7	28.5
<b>Net income (less deficit):</b>								
All businesses.....	1,055.4	-46.2	142.9	97.0	73.2	36.9	117.2	646.9
C corporations.....	413.0	-19.1	-8.4	-11.2	-10.4	-0.2	21.9	440.6
S corporations.....	150.6	-8.4	9.4	24.1	33.3	16.3	37.6	38.4
Partnerships.....	270.7	-34.9	13.6	25.1	35.7	19.5	50.8	161.0
Sole proprietorships.....	221.1	16.4	128.3	59.0	14.6	1.3	1.0	0.5

largest composition percentages in receipt size-classes between \$250,000 and \$50 million. Proprietorships, as would be expected, comprise the majority of small organizations, accounting for 92 percent of businesses with receipts under \$25,000 but with a rapidly diminishing share with increases in receipt size. For the largest size receipt size-class (\$50 million or more), proprietorships comprise only 0.2 percent of the total.

The composition of net income (less deficit) or profits among receipt sizes also shows some interesting and well-defined patterns. First, for the under \$25,000 receipt size-class, there was an overall \$46-billion loss for all types of businesses, and only proprietorships had positive net income. Although C corporations accounted for 39 percent of business profits for 2002, they show losses in all receipt size-classes below \$10 million. However, C corporations become profitable for size-classes over \$10 million, and those with receipts above \$50 million earned over \$440 billion in profits, nearly 42 percent of the total. S corporations once again show their largest composition shares in the middle receipt size-classes, with composition shares ranging from nearly 25

percent to almost 46 percent for businesses with receipts between \$250,000 and \$50 million. Partnerships had nearly \$35 billion in losses for the smallest size-class, but were profitable for all larger receipt size-classes. For receipt sizes above \$25,000, partnerships had profits of at least \$13 billion and accounted for 22 percent to 55 percent of total profits. Proprietorships, which include nearly 21 percent of overall profits, are the only business type with profitability in the under \$25,000 receipt size-class. Above \$25,000, proprietorships show a rapidly decreasing share of profits, with nearly 90 percent in the \$25,000-\$250,000 receipt size-class but only \$0.5 billion and 0.1 percent for the largest class.

► **Data by Industrial Sector, 1998-2002**

In this section, we focus on specific sectors that showed significant activity during the period 1998 through 2002. During this timeframe, a number of national and international events impacted economic activity, including the end of the uninterrupted GDP growth of the 1990's; the technology boom and bust; the September 11, 2001, attacks; real estate volatility;

accounting scandals; and enactment of the Small Business Job Protection Act of 1996. All of these potentially impacted business activity in specific sectors. As noted, selected financial data for 21 NAICS sectors for 1998-2002 are included in Tables 3A-3E and summary data for eight key sectors are presented in Figures K, L, and M and discussed below.

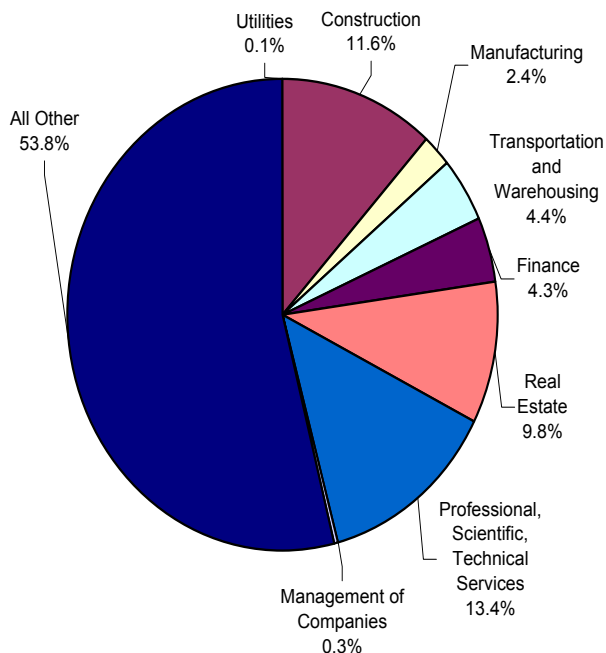
**Utilities**--As shown in Tables 3A-3E, the number of business entities in the Utilities sector decreased by 2.1 percent from 17,662 for 1998 to 17,283 for 2002. The most notable aspect of the decline was the 19.3-percent decrease in S corporation returns, from 2,124 to 1,715. The number of C corporations and partnerships classified as Utilities increased slightly, with only the large decline in S corporations and a slight decline in proprietorship Utilities, reducing the total for all businesses. The large decline in S corporation Utilities was mostly attributable to the smallest business receipt class, those returns with less than \$25,000 in business receipts.

The Utilities sector experienced a large decline in net income (less deficit) over the period, most of which was attributable to the largest receipt size-class for C corporations. C corporations reporting \$50 million or more in business receipts saw their net income (less deficit) decline from \$30.7 billion for 1998 to a loss of \$95.4 million for 2002. S corporations and partnership net income (less deficit) increased slightly both overall and in the largest receipt size-class.

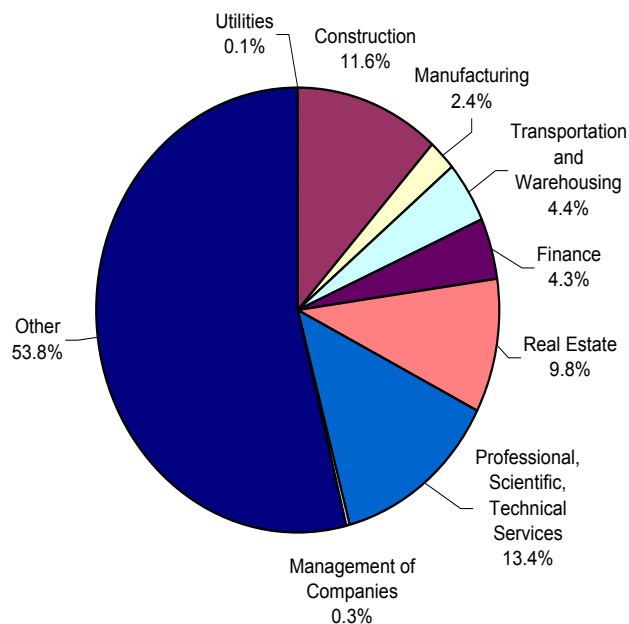
**Construction**--The Construction industry accounted for roughly 12 percent of the total number of business entities. The number of businesses in this sector increased 4.8 percent over the 5-year period, from 2.9 million to 3.1 million. However, over the 1998-2002 period, the number of C corporations declined from 246,404 to 229,765 (6.8 percent), while the number of S corporations increased from 305,531 to 418,770 (37.1 percent).

Between 1998 and 2002, businesses showed significant increases in all data items, with the largest increases in S corporations, partnerships, and proprietorships. Business receipts of S corporations increased by 46.0 percent, from \$391.9 billion to \$572.1 billion; those of partnerships increased by 59.5 percent from \$106.3

**Figure K--Number of Entities as Percent of Total by Selected Sector, Tax Year 2002**

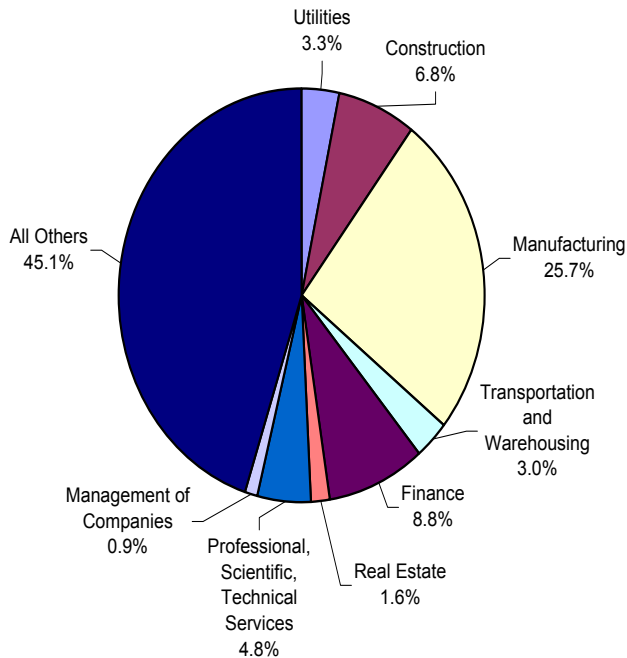


**Figure L--Number of Entities as Percent of Total, by Selected Sector, Tax Year 2002**





**Figure M--Business Receipts as Percent of Total by Selected Sector, Tax Year 2002**



billion to \$169.6 billion; and those of proprietorships increased by 17.0 percent, from \$143.9 billion to \$168.5 billion. Significant increases were also seen in salaries and wages of these entities, as well as in depreciation.

**Manufacturing**--For 1998, 706,002 businesses classified themselves in the Manufacturing sector. By 2002, the number had dropped to 628,868, a 10.9-percent decrease in business return filers for this sector. Of the four entity types, all declined in number with the exception of partnerships, which showed a 10.1-percent increase to 38,364. The increase in number of partnerships did little, however, to alter the distribution of partnerships among receipt size-classes. For 1998, 47.1 percent of partnerships classified in Manufacturing reported business receipts under \$100,000. For 2002, 45.2 percent of manufacturers still fell under this threshold.

C corporations and sole proprietorships accounted for most of the decline in the number of manufacturers. C corporations dropped by 27,141 (16.6 percent), and proprietorships dropped by 50,935 (14.1 percent). The

distribution of C corporation manufacturers across business receipt classes changed little from 1998 to 2002, with all classes but one (\$100,000 under \$250,000) showing decreases. Despite a decreasing number of sole proprietorships engaged in manufacturing, the period 1998–2002 saw growth in the number of large manufacturing proprietorships, with those reporting between \$5 million and \$50 million in business receipts increasing by 52.6 percent from 116 for 1998 to 177 for 2002. These changes in the manufacturing sector did little to change the composition of the sector, with each entity type making up roughly the same share of all Manufacturing for 1998 as for 2002.

Growth in business receipts for partnerships in Manufacturing exceeded that of partnerships in all sectors. Partnership business receipts in Manufacturing grew by 96 percent to \$485.0 million between 1998 and 2002. This growth could be traced to partnerships with \$50 million or more in business receipts. For 1998, 73.6 percent, or \$182.2 million, of business receipts of manufacturing partnerships were in the \$50 million or more business receipt size-class, while, for 2002, 81.4 percent, or \$394.9 million, were in this class.

**Transportation and Warehousing**--Growth in the overall number of business filers in this sector outpaced the growth of all sectors. The number of business entities classified in Transportation and Warehousing increased from 969,104 to 1,153,198, an increase of 19.0 percent. The number of each separate entity type increased over the period 1998–2002, but the largest percentage increases were seen in partnerships, S corporations, and proprietorships. Partnerships increased by 35.5 percent, or 6,814 returns; S corporations by 21.3 percent, or 17,290 returns; and proprietorships by 20.1 percent, or 159,181 returns. Although C corporations did show positive growth, their numbers increased by only 1 percent, from 78,342 for 1998 to 79,150 for 2002.

Well over half of all growth in Transportation and Warehousing partnerships can be traced to the smallest two receipt size-classes. The number of partnerships reporting \$100,000 or less in business receipts accounted for 59.5 percent, or 4,051, of new partnership returns in this sector. Sole proprietorships showed increases in all receipt size-classes, but growth was concentrated on the

lower end, with 99.3 percent, or 157,999, of new returns reporting less than \$250,000 in business receipts. S corporation growth was more evenly distributed among the various receipt size-classes. As with Manufacturing, the composition of the Transportation and Warehousing sector changed little. Of the 5 years studied, each entity's share of this sector remained relatively constant. Business receipts increased 13.6 percent to \$617.9 billion across all entities, while net income (less deficit) decreased 91.9 percent to \$2.5 billion over this period. Both C corporations and S corporations were responsible for the decrease in net income (less deficit).

**Finance and Insurance**--C corporations represent the majority of business income for the Finance and Insurance sector, while all other business entities combined represent 88.8 percent of all businesses in the sector. The number of C corporations declined over the period 1998-2002 by 12.0 percent, from 115,309 to 101,495. This decline was particularly noticeable in the smallest receipt size-classes. C corporations reporting less than \$25,000 in business receipts declined from 30,440 to 22,464. Partnerships reported the largest increase in number of businesses from 209,150 for 1998 to 263,024 for 2002, or 25.8 percent. Growth in the number of partnerships was also concentrated in smaller receipt size-classes, with the number of returns reporting less than \$25,000 in business receipts, increasing from 152,559 to 176,425.

Although net income (less deficit) for the Finance and Insurance sector declined from 1998 to 2002, partnerships were an exception. Net income (less deficit) for partnerships in this sector increased by 41.1 percent, from \$63.3 billion to \$89.3 billion. However, partnership net income (less deficit) represented only 25.2 percent of the \$354.8 billion in net income (less deficit) for all entity types for 2002.

**Real Estate**--The overall number of business entities in Real Estate increased 17.2 percent to 2,585,914 between 1998 and 2002. With this increase in the number of entities, there was also an increase of business receipts, which increased by 25.3 percent to \$326.4 billion. For all businesses, interest paid increased until 2002, when the overall interest paid declined by 26.0 percent from 2001 to \$19.6 billion.

The number of partnerships in Real Estate grew by 23.1 percent to 999,786 entities during the period 1998 through 2002, faster than any other entity type. Partnerships also displayed the largest amount of net income (less deficit) (\$55 billion) for the same time period, representing 68.0 percent of net income (less deficit) for all business entities. This growth could be traced to the \$5 million to under \$10 million class of business receipts, where net income (less deficit) increased from \$4.1 billion to \$8.0 billion, a 95.5-percent increase. C corporations were the only entity type in Real Estate to experience a decline in numbers. C corporation net income (less deficit) declined for the period 1998-2002, decreasing from \$4.9 billion in 1998 to almost -\$0.9 billion in 2002. Nearly all this decline was found in the C corporations reporting business receipts with \$50.0 million or more.

**Professional, Scientific, and Technical Services**--Overall, the number of businesses in the Professional, Scientific, and Technical Services sector showed a 12-percent increase, from 3.2 million for 1998 to 3.6 million for 2002. The increase was due to a 29.4-percent increase in S corporations, from 371,152 to 480,120, and a 9.9-percent increase for proprietorships, from 2.4 million to 2.7 million. Most of the growth for both S corporations and proprietorships could be traced to smaller receipt size-classes rather than to a single class.

For 2001, partnerships surpassed proprietorships as the leader in net income (less deficit), accounting for \$49.9 billion of the nearly \$93.2 billion reported for all business entities. Beginning for 1999, total net income (less deficit) for C corporations decreased to a \$4.5-billion loss and has remained negative for each year through 2002 when C corporations reported -\$19.7 billion. Despite this decline, C corporations continued to show the largest total receipts, business receipts, and total business deductions for this sector.

Since 1999, all entities excluding C corporations have displayed positive amounts for the total net income (less deficit), while C corporations displayed negative amounts for total net income (less deficit) during the same time period. Entities other than C corporations represented over 50 percent of all total receipts and business receipts for all business entities.

**Management of Companies**--The number of business entities in the Management of Companies (holding companies) sector increased 55.7 percent over the period 1998-2002, from 42,918 to 66,826 entities. However, one entity type, proprietorships, is not represented in this sector. S corporations displayed the largest percentage increase in number of businesses for this industry, 89.9 percent, an increase from 11,471 for 1998 to 21,779 for 2002. The largest increases were in smaller receipt size-classes, i.e., entities with business receipts under \$25,000 grew from 9,460 entities to 17,729 entities. This growth of S corporations can be attributed partly to the Small Business Job Protection Act of 1996, which permitted financial institutions that use the specific chargeoff method of Section 166 to account for the writeoff of bad debts to elect Subchapter S status. This provision has also led to a significant increase in the number of bank holding companies, which are also included in this sector.

Cost of goods sold for all Management of Companies more than tripled over the 5-year period of 1998-2002. C corporations nearly tripled their cost of goods sold for this period with an increase of \$7.2 billion, from nearly \$3.8 billion for 1998 to \$11.1 billion for 2002. Almost all of this growth was concentrated in C corporations with \$50 million or more in business receipts. C corporations in this class alone saw cost of goods sold rise from \$3.5 billion for 1998 to \$10.9 billion for 2002. Partnerships accounted for the largest percentage increase for cost of goods sold during this 5-year span, increasing 576.9 percent, to \$6.5 billion.

### ► **Conclusions and Plans for Future Research**

The most significant findings for the 22-year period are the shift in overall business activity away from C corporations to those organizations whose profits are taxed at the individual level. Overall, the data for net income (less deficit) show the dominance of C corporations, although their share of the total declined precipitously, plummeting from 80 percent for 1980-1981 to 39 percent for 2002. This is a very significant development since revenue from the corporation income tax has been a significant source of overall tax collections. This phenomenon is even more noteworthy considering the relatively stable corporation statutory tax rates, especially

in the post-TRA period. C corporations accounted for nearly 17 percent of business entities in 1980, but their percentage fell steadily to 8 percent in 2002. Although C corporations dominated business receipts, their share likewise declined throughout the period from a high of 87 percent in 1981 to 65 percent in 2002. Sole proprietorships were the largest and most stable component of business entities for this period, accounting for between 69 percent and 74 percent of overall business entities in all years. When the data are classified by size of business receipts, the largest number of entities fell into the smallest receipt size-class, but the vast majority of business receipts for most entity types generally accrued to those in the largest receipt class. C corporations dominated the receipts data in the largest class, accounting for approximately 80 percent of business receipts and nearly 72 percent of profits.

Although economic events affected different industrial sectors in very different ways, the data showed a particularly substantial trend in the 1998-2002 period. The data by industrial sector illustrated that the trend of shifting overall business activity away from C corporations to those organizations whose profits are taxed at the individual level was prevalent throughout all sectors of the economy. The most notable trend by industrial sector was the rapid growth in the number of businesses organized as flowthrough entities. In many industrial sectors, the number of C corporations grew very slightly or even declined. Across industrial sectors, almost without exception, S corporations and partnerships showed rapid growth in number of entities. S corporations showed large nominal increases, while partnerships typically grew at the fastest rates. In almost all sectors, the most notable growth in net income (less deficit) was also isolated in businesses organized as flowthrough entities.

Finally, opinions expressed in this paper are those of the authors and should not be attributed to the Internal Revenue Service or the U.S. Department of the Treasury although comments are welcome.

### ► **Endnotes**

- <sup>1</sup> Legel, Ellen; Bennett, Kelly; and Parisi, Michael (2004), *The Effects of Tax Reform on the*

- Structure of U.S. Business, *2003 Proceedings of the American Statistical Association, Section on Government Statistics*.
- <sup>2</sup> Petska, Tom (1998), Taxes and Business Organizational Choice: Deja Vu All Over Again? *1997 Proceedings of the American Statistical Association, Section on Business and Economic Statistics*.
- <sup>3</sup> Wittman, Susan M. and Gill, Amy, S Corporation Elections After the Tax Reform Act of 1986, presented at the 1996 Allied Social Science Meetings and published in *Statistics of Income Bulletin*, Spring 1998, Volume 17, Number 4.
- <sup>4</sup> Nutter, Sarah E.; Young, Jim; and Wilkie, Patrick, Tax Legislation and Business Form Choice: C Corporation Behavior Before and After TRA86, presented at the 1996 Allied Social Science Meetings and published in *Statistics of Income Bulletin*, Winter 1995-96, Volume 15, Number 3.
- <sup>5</sup> Petska, Tom, Taxes and Organizational Choice: An Analysis of Trends, 1985-1992, *Statistics of Income Bulletin*, Spring 1996, Volume 15, Number 4.
- <sup>6</sup> Petska, Tom, Do Taxes Affect Business Legal Structure? An Analysis of IRS Data, presented at the 1996 Allied Social Science Meetings.
- <sup>7</sup> Petska, Tom and Wilson, Robert, Trends in Business Structure and Activity, 1980-1990, *Statistics of Income Bulletin*, Spring 1994, Volume 13, Number 4.
- <sup>8</sup> Petska, Tom (1994), The Effects of Tax Reform on the Structure of U.S. Business, *1993 Proceedings of the American Statistical Association, Section on Business and Economic Statistics*.
- <sup>9</sup> As noted, the Integrated Business Dataset is a compilation of table level data from SOI cross-sectional business studies. Future plans are to construct a true Integrated Business Database consisting of microdata from SOI C and S corporations, partnerships, and nonfarm sole proprietorships.
- <sup>10</sup> Data on financial activity by size of business receipts by NAICS sectors are included in an extended version of Tables 2A-2E for this paper on the SOI Tax Stats Web site at <http://www.irs.gov/taxstats/bustaxstats/article/0,,id=152029,00.html>.
- <sup>11</sup> In Table 1, Regulated Investment Companies (RIC's) and Real Estate Investment Trusts (REIT's), which are not taxed at the enterprise level but whose income similarly flows through to their owners, are excluded from C corporations and shown separately. However, in all other tables and figures, they are included with C corporations.
- <sup>12</sup> Annual growth rates were computed as follows:
- $$G_t = (\ln X_t - \ln X_{t-n}) 100 / n$$
- where  $G_t$  = the annual growth rate in the value of X between periods t and n,
- $\ln X_t$  = the natural logarithm of the value of X for period t,
- $\ln X_{t-n}$  = the natural logarithm of the value of X for period t-n, and
- n = the number of years on which the computation is based.
- <sup>13</sup> Unlike data in the SOI *Corporation Income Tax Returns* and *Source Book of Corporation Income Tax Returns*, net income (less deficit) used in this paper includes the more comprehensive "total net income" for S corporations. This item includes trade or business income plus portfolio income, as well as real estate and rental activity incomes distributed directly to shareholders.
- <sup>14</sup> From Table 7 in the IRS 2004 *Data Book*, for 1980, the corporation income tax accounted for nearly 14 percent of total Internal Revenue collections. For 2002, this share had declined to about 10.5 percent.
- <sup>15</sup> In this paper, we assume that all partnership profits and losses accrue to individuals. However, from the Partnership Schedule K, data are available on distributions by type of partner. For 2002, \$156.1 billion, or 54.2 percent, of allocated income was



distributed to nonindividual partners (which include corporate, partnership, tax-exempt, and nominees). The *SOI Bulletin* article, Partnership Returns, 2002, referenced below, has additional information.

► **References**

- Internal Revenue Service, *Statistics of Income--Corporation Income Tax Returns*, Publication 16, 1980-2002.
- Internal Revenue Service, *Statistics of Income--Individual Income Tax Returns*, Publication 1304, 1980-2002.
- Internal Revenue Service, *Statistics of Income--Source Book of Corporation Income Tax Returns*, Publication 1053, 1980-2002.
- Internal Revenue Service, *Statistics of Income--Special Studies in Federal Tax Statistics*, various years.
- Luttrell, Kelly, S Corporation Returns, 2002, *Statistics of Income Bulletin*, Spring 2005, Volume 24, Number 4. (See <http://www.irs.gov/taxstats/productsandpubs/article/0,,id=130681,00.html> for *SOI Bulletin* articles and data on additional years.)
- Nelson, Susan C., S Corporations: The Record of Growth After Tax Reform, *Journal of S Corporation Taxation*, Fall 1993, Volume 5, Number 2.
- Nelson, Susan, and Petska, Tom (1990), Partnerships, Passive Losses, and Tax Reform, *1989 Proceedings of the American Statistical Association, Section on Survey Research Methods*.
- Pierce, Kevin, Sole Proprietorship Returns, 2003, *Statistics of Income Bulletin*, Summer 2005, Volume 25, Number 1. (See <http://www.irs.gov/taxstats/productsandpubs/article/0,,id=130681,00.html> for *SOI Bulletin* articles and data on additional years.)
- Petska, Tom, Partnerships, Partners, and Tax Shelters After Tax Reform, 1987-1989, *Statistics of Income Bulletin*, Summer 1992, Volume 12, Number 1.
- Petska, Tom and Nelson, Susan (1991), Partnerships and Tax Shelters: An Analysis of the Impact of the 1986 Tax Reform, *1990 Proceedings of the American Statistical Association, Section on Survey Research Methods*.
- Plesko, George A., Corporation Taxation and the Financial Characteristics of Firms, *Public Finance Quarterly*, July 1994.
- Scholes, Myron S., and Wolfson, Mark A. (1992), *Taxes and Business Strategy: A Planning Approach*.
- Wheeler, Timothy and Parsons, Maureen, Partnership Returns, 2002, *Statistics of Income Bulletin*, Fall 2004, Volume 24, Number 2. (See <http://www.irs.gov/taxstats/productsandpubs/article/0,,id=130681,00.html> for *Bulletin* articles and data on additional years.)



**Table 1.--Number of Businesses, Business Receipts, Net Income, and Deficit, by Form of Business, Tax Years 1980-2002**

[All figures are estimates based on samples--money amounts are in thousands of dollars]

Form of business, item	Tax Year							
	1980	1981	1982	1983	1984	1985	1986	1987
	(1)	(2)	(3)	(4)	(5)	(6)	(7)	(8)
<b>All Businesses</b>								
Number of businesses.....	13,021,904	13,857,712	14,545,660	15,244,531	16,076,714	16,919,395	17,525,167	18,351,297
Total receipts.....	7,064,487,840	7,725,544,701	7,754,452,966	7,891,981,399	8,751,940,681	9,305,441,171	9,626,065,304	10,634,345,667
Business receipts.....	6,413,930,882	6,901,768,455	6,842,267,893	7,043,019,718	7,782,861,217	8,212,317,757	8,422,295,127	9,436,817,505
Net income (less deficit).....	316,874,165	263,985,693	197,592,719	246,063,040	300,167,182	310,007,924	342,583,143	434,130,755
Net income.....	424,569,277	420,560,759	396,557,182	435,858,670	508,725,907	539,687,640	599,572,585	680,068,330
Deficit.....	107,695,112	156,575,064	198,964,461	189,795,629	208,558,725	229,679,718	256,989,442	245,937,575
<b>Corporations</b>								
Number of businesses.....	2,710,538	2,812,420	2,925,933	2,999,071	3,170,743	3,277,219	3,428,515	3,612,133
Total receipts.....	6,361,284,012	7,026,351,839	7,024,097,766	7,135,494,059	7,860,711,226	8,398,278,426	8,669,378,501	9,580,720,701
Business receipts.....	5,731,616,337	6,244,678,064	6,156,994,009	6,334,602,711	6,948,481,893	7,369,538,953	7,535,482,221	8,414,537,647
Net income (less deficit)( * ).....	253,678,291	213,648,962	154,334,143	188,313,928	232,900,596	240,119,020	269,530,240	334,089,233
Net income.....	311,497,470	301,440,778	274,352,942	296,932,146	349,179,415	363,867,384	408,860,760	468,631,779
Deficit.....	57,819,180	87,791,816	120,018,799	108,618,218	116,278,819	123,748,365	139,330,520	134,542,546
<b>C Corporations</b>								
Number of businesses.....	2,163,458	2,268,966	2,359,272	2,348,162	2,465,843	2,549,091	2,598,271	2,480,440
Total receipts.....	6,133,036,929	6,782,602,310	6,746,286,554	6,801,022,254	7,440,141,155	7,920,235,884	8,115,394,384	8,538,869,502
Business receipts.....	5,526,725,253	6,038,269,090	5,921,937,283	6,043,788,300	6,575,574,080	6,953,447,173	7,068,730,197	7,463,209,264
Net income (less deficit).....	236,487,630	185,868,913	120,180,204	154,156,433	196,435,483	192,991,940	203,018,630	250,706,247
Net income.....	288,701,762	266,981,510	232,171,007	253,219,429	300,847,319	303,127,497	326,576,008	366,764,203
Deficit.....	52,214,132	81,112,597	111,990,802	99,062,994	104,411,836	110,135,558	123,557,378	116,057,956
<b>1120-RIC and 1120-REIT</b>								
Number of businesses.....	1,691	1,965	2,442	2,642	3,561	3,379	4,030	3,788
Total receipts.....	17,924,659	31,235,499	34,754,643	34,223,383	35,543,228	47,400,761	69,997,816	69,604,933
Business receipts.....	3,716	51,060	45,971	49,473	175,374	50,592	39,187	22,551
Net income (less deficit).....	14,671,749	25,909,303	31,105,996	29,082,144	29,558,446	39,524,630	58,218,369	53,365,950
Net income.....	14,710,269	26,005,246	31,189,913	29,137,568	29,625,752	39,580,022	58,342,246	53,476,411
Deficit.....	38,521	95,943	83,918	55,426	67,306	55,392	123,877	110,461
<b>S Corporations</b>								
Number of businesses.....	545,389	541,489	564,219	648,267	701,339	724,749	826,214	1,127,905
Total receipts.....	210,322,424	212,514,030	243,056,569	300,248,422	385,026,843	430,641,781	483,986,301	972,246,266
Business receipts.....	204,887,368	206,357,914	235,010,755	290,764,938	372,732,439	416,041,188	466,712,837	951,305,832
Total net income (less deficit) ( * ).....	2,518,912	1,870,746	3,047,943	5,075,351	6,906,667	7,602,450	8,293,241	30,017,036
Net income.....	8,085,439	8,454,022	10,992,022	14,575,149	18,706,344	21,159,865	23,942,506	48,391,165
Deficit.....	5,566,527	6,583,276	7,944,079	9,499,798	11,799,677	13,557,415	15,649,265	18,374,129
<b>Partnerships</b>								
Number of businesses.....	1,379,654	1,460,502	1,514,212	1,541,539	1,643,581	1,713,603	1,702,952	1,648,032
Total receipts ( * ).....	291,998,115	272,129,807	296,690,303	291,318,703	375,192,511	367,117,315	397,302,544	442,802,234
Business receipts.....	271,108,832	230,027,336	251,608,987	243,248,370	318,342,380	302,733,374	327,428,647	411,457,126
Net income (less deficit).....	8,248,655	-2,734,897	-7,314,587	-2,610,041	-3,500,024	-8,883,674	-17,370,860	-5,419,105
Net income.....	45,061,756	50,567,190	53,556,856	60,308,114	69,696,922	77,044,693	80,214,873	87,654,011
Deficit.....	36,813,100	53,302,086	60,871,442	62,918,155	73,196,946	85,928,367	97,585,733	93,073,116
<b>General ( * )</b>								
Number of businesses.....	1,209,318	1,252,298	1,288,328	n.a.	n.a.	n.a.	1,429,876	1,385,824
Total receipts ( * ).....	n.a.	n.a.	n.a.	n.a.	n.a.	n.a.	n.a.	n.a.
Business receipts.....	n.a.	n.a.	n.a.	n.a.	n.a.	n.a.	n.a.	n.a.
Net income (less deficit).....	n.a.	n.a.	n.a.	n.a.	n.a.	n.a.	n.a.	n.a.
Net income.....	n.a.	n.a.	n.a.	n.a.	n.a.	n.a.	n.a.	n.a.
Deficit.....	n.a.	n.a.	n.a.	n.a.	n.a.	n.a.	n.a.	n.a.
<b>Limited ( * )</b>								
Number of businesses.....	170,336	208,204	225,886	n.a.	n.a.	n.a.	273,076	262,210
Total receipts ( * ).....	n.a.	n.a.	n.a.	n.a.	n.a.	n.a.	n.a.	n.a.
Business receipts.....	n.a.	n.a.	n.a.	n.a.	n.a.	n.a.	n.a.	n.a.
Net income (less deficit).....	n.a.	n.a.	n.a.	n.a.	n.a.	n.a.	n.a.	n.a.
Net income.....	n.a.	n.a.	n.a.	n.a.	n.a.	n.a.	n.a.	n.a.
Deficit.....	n.a.	n.a.	n.a.	n.a.	n.a.	n.a.	n.a.	n.a.
<b>LLC</b>								
Number of businesses.....	n.a.	n.a.	n.a.	n.a.	n.a.	n.a.	n.a.	n.a.
Total receipts ( * ).....	n.a.	n.a.	n.a.	n.a.	n.a.	n.a.	n.a.	n.a.
Business receipts.....	n.a.	n.a.	n.a.	n.a.	n.a.	n.a.	n.a.	n.a.
Net income (less deficit).....	n.a.	n.a.	n.a.	n.a.	n.a.	n.a.	n.a.	n.a.
Net income.....	n.a.	n.a.	n.a.	n.a.	n.a.	n.a.	n.a.	n.a.
Deficit.....	n.a.	n.a.	n.a.	n.a.	n.a.	n.a.	n.a.	n.a.
<b>Nonfarm Sole Proprietorships</b>								
Number of businesses.....	8,931,712	9,584,790	10,105,515	10,703,921	11,262,390	11,928,573	12,393,700	13,091,132
Total receipts.....	411,205,713	427,063,055	433,664,897	465,168,637	516,036,944	540,045,430	559,384,259	610,822,732
Business receipts.....	411,205,713	427,063,055	433,664,897	465,168,637	516,036,944	540,045,430	559,384,259	610,822,732
Net income (less deficit).....	54,947,219	53,071,628	50,573,163	60,359,153	70,766,610	78,772,578	90,423,763	105,460,627
Net income.....	68,010,051	68,552,791	68,647,384	78,618,410	89,849,570	98,775,563	110,496,952	123,782,540
Deficit.....	13,062,832	15,481,162	18,074,220	18,259,256	19,082,960	20,002,986	20,073,189	18,321,913

Footnotes at end of table.

**Table 1.--Number of Businesses, Business Receipts, Net Income, and Deficit, by Form of Business, Tax Years 1980-2002--Continued**

[All figures are estimates based on samples--money amounts are in thousands of dollars]

Form of business, item	Tax Year							
	1988	1989	1990	1991	1992	1993	1994	1995
	(9)	(10)	(11)	(12)	(13)	(14)	(15)	(16)
<b>All Businesses</b>								
Number of businesses.....	18,896,336	19,560,585	20,052,917	20,498,855	20,849,195	21,280,315	21,990,203	22,478,939
Total receipts.....	11,435,215,490	12,133,006,886	12,659,120,980	12,664,503,877	13,030,765,631	13,633,127,677	14,854,464,587	16,161,117,843
Business receipts.....	10,085,772,195	10,585,040,288	11,074,465,157	11,161,361,183	11,612,337,830	12,183,757,092	13,330,403,562	14,353,779,041
Net income (less deficit).....	563,932,180	548,157,101	541,253,496	523,452,364	611,007,348	733,369,871	843,984,176	1,012,514,546
Net income.....	818,548,839	829,704,453	n.a.	818,176,732	877,227,604	987,904,144	1,095,275,051	1,270,904,560
Deficit.....	254,616,660	281,547,353	n.a.	294,724,370	266,220,258	254,534,273	251,290,875	258,390,016
<b>Corporations</b>								
Number of businesses.....	3,562,789	3,627,863	3,716,650	3,802,788	3,869,024	3,964,629	4,342,369	4,474,167
Total receipts.....	10,264,867,461	10,934,973,405	11,409,520,074	11,436,474,767	11,742,134,728	12,269,721,709	13,360,007,157	14,539,050,115
Business receipts.....	8,949,846,244	9,427,277,533	9,860,441,633	9,965,628,799	10,360,428,795	10,865,542,520	11,883,614,940	12,785,797,708
Net income (less deficit)( <sup>1</sup> ).....	423,115,815	401,320,146	383,213,763	360,529,974	414,130,453	510,258,780	595,002,432	736,423,014
Net income.....	561,646,539	563,402,110	n.a.	542,341,802	581,920,697	670,480,179	756,502,169	900,524,657
Deficit.....	138,530,724	162,081,965	n.a.	181,811,828	167,790,244	160,221,400	161,499,736	164,101,644
<b>C Corporations</b>								
Number of businesses.....	2,299,896	2,199,081	2,136,032	2,098,641	2,077,518	2,055,982	2,310,703	2,312,382
Total receipts.....	8,929,061,395	9,381,129,704	9,689,007,338	9,656,969,832	9,821,791,797	10,154,952,821	11,020,933,534	11,955,289,941
Business receipts.....	7,712,940,028	7,992,750,467	8,272,370,751	8,310,147,728	8,569,591,965	8,897,605,783	9,710,160,635	10,419,343,855
Net income (less deficit).....	327,131,666	289,721,555	270,925,138	248,113,316	291,866,888	368,912,105	426,082,290	514,751,182
Net income.....	445,141,000	425,910,498	416,617,439	401,582,120	426,078,044	496,151,930	554,083,672	641,753,805
Deficit.....	118,009,334	136,188,943	145,692,301	153,468,803	134,211,156	127,239,826	128,001,382	127,002,623
<b>1120-RIC and 1120-REIT</b>								
Number of businesses.....	5,702	5,815	5,526	5,876	6,135	7,142	7,912	8,666
Total receipts.....	71,817,689	89,877,386	99,810,072	96,520,359	98,459,970	117,172,085	128,128,279	178,686,713
Business receipts.....	--	--	--	--	--	--	--	--
Net income (less deficit).....	52,447,631	66,819,244	67,457,384	67,671,565	63,933,826	75,113,178	77,243,699	122,543,160
Net income.....	52,596,709	67,087,163	67,983,981	68,188,117	64,704,531	75,770,157	78,447,581	123,812,233
Deficit.....	149,078	267,920	526,597	516,553	770,705	656,979	1,203,881	1,269,074
<b>S Corporations</b>								
Number of businesses.....	1,257,191	1,422,967	1,575,092	1,698,271	1,785,371	1,901,505	2,023,754	2,153,119
Total receipts.....	1,263,988,377	1,463,966,315	1,620,702,664	1,682,984,576	1,821,882,961	1,997,596,803	2,210,945,344	2,405,073,461
Business receipts.....	1,236,906,216	1,434,527,066	1,588,070,882	1,655,481,071	1,790,836,830	1,967,936,737	2,173,454,305	2,366,453,853
Total net income (less deficit) ( <sup>2</sup> ).....	43,536,518	44,779,347	44,831,241	44,745,903	58,329,739	66,233,497	91,676,443	99,128,672
Net income.....	63,908,830	70,404,449	n.a.	72,571,565	91,138,122	98,558,092	123,970,916	134,958,619
Deficit.....	20,372,312	25,625,102	n.a.	27,826,472	32,808,383	32,324,595	32,294,473	35,829,947
<b>Partnerships</b>								
Number of businesses.....	1,654,245	1,635,164	1,553,529	1,515,345	1,484,752	1,467,567	1,493,963	1,580,900
Total receipts ( <sup>3</sup> ).....	498,378,098	505,222,543	518,994,886	515,461,121	551,548,871	606,190,516	703,827,410	814,704,090
Business receipts.....	463,956,020	464,951,817	483,417,504	483,164,395	514,827,003	560,999,120	656,158,602	760,617,695
Net income (less deficit).....	14,493,114	14,099,275	16,609,540	21,406,607	42,916,649	66,652,288	82,183,076	106,829,196
Net income.....	111,384,545	113,885,966	116,317,801	113,408,221	121,834,358	137,440,684	150,927,743	178,650,950
Deficit.....	96,891,431	99,786,691	99,708,261	92,001,615	78,917,710	70,788,396	68,744,668	71,821,755
<b>General (<sup>4</sup>)</b>								
Number of businesses.....	1,369,093	1,341,527	1,267,760	1,244,665	1,214,004	1,174,395	1,161,800	1,163,376
Total receipts ( <sup>3</sup> ).....	n.a.	n.a.	349,839,034	349,793,551	354,750,145	369,030,331	394,825,973	417,535,888
Business receipts.....	n.a.	n.a.	334,184,309	333,189,600	336,912,510	348,350,203	375,032,602	395,396,396
Net income (less deficit).....	38,503,534	35,660,018	37,770,771	38,108,885	46,194,340	55,028,590	58,721,349	63,625,642
Net income.....	n.a.	n.a.	81,903,253	78,330,522	81,313,616	85,128,982	87,680,812	92,586,762
Deficit.....	n.a.	n.a.	44,132,482	40,221,637	35,119,276	30,100,391	28,959,463	28,961,119
<b>Limited (<sup>5</sup>)</b>								
Number of businesses.....	285,152	293,637	285,769	270,681	270,748	275,837	284,346	298,965
Total receipts ( <sup>3</sup> ).....	n.a.	n.a.	169,155,852	165,667,570	196,799,726	229,703,974	284,624,411	330,681,486
Business receipts.....	n.a.	n.a.	149,233,195	149,974,795	177,914,493	205,554,303	257,887,113	302,336,684
Net income (less deficit).....	-24,010,711	-21,560,743	-21,161,231	-16,702,278	-3,277,692	11,360,424	21,410,503	38,319,799
Net income.....	n.a.	n.a.	34,414,548	35,077,700	40,520,742	51,238,208	59,544,970	76,029,542
Deficit.....	n.a.	n.a.	55,575,779	51,779,978	43,798,434	39,877,784	38,134,467	37,709,743
<b>LLC</b>								
Number of businesses.....	n.a.	n.a.	n.a.	n.a.	n.a.	17,335	47,816	118,559
Total receipts ( <sup>3</sup> ).....	n.a.	n.a.	n.a.	n.a.	n.a.	7,456,210	24,377,026	66,486,715
Business receipts.....	n.a.	n.a.	n.a.	n.a.	n.a.	7,094,614	23,238,886	62,884,616
Net income (less deficit).....	n.a.	n.a.	n.a.	n.a.	n.a.	263,274	2,051,224	4,883,755
Net income.....	n.a.	n.a.	n.a.	n.a.	n.a.	1,073,995	3,701,961	10,034,647
Deficit.....	n.a.	n.a.	n.a.	n.a.	n.a.	810,221	1,650,737	5,150,892
<b>Nonfarm Sole Proprietorships</b>								
Number of businesses.....	13,679,302	14,297,558	14,782,738	15,180,722	15,495,419	15,848,119	16,153,871	16,423,872
Total receipts.....	671,969,931	692,810,938	730,606,020	712,567,989	737,082,032	757,215,452	790,630,020	807,363,638
Business receipts.....	671,969,931	692,810,938	730,606,020	712,567,989	737,082,032	757,215,452	790,630,020	807,363,638
Net income (less deficit).....	126,323,251	132,737,680	141,430,193	141,515,783	153,960,246	156,458,803	166,798,668	169,262,336
Net income.....	145,517,755	152,416,377	161,657,252	162,426,709	173,472,549	179,983,281	187,845,139	191,728,953
Deficit.....	19,194,505	19,678,697	20,227,059	20,910,927	19,512,304	23,524,477	21,046,471	22,466,617

Footnotes at end of table.

AN ANALYSIS OF BUSINESS ORGANIZATIONAL STRUCTURE AND ACTIVITY FROM TAX DATA

**Table 1.--Number of Businesses, Business Receipts, Net Income, and Deficit, by Form of Business, Tax Years 1980-2002--Continued**

[All figures are estimates based on samples--money amounts are in thousands of dollars]

Form of business, item	Tax Year						
	1996	1997	1998	1999	2000	2001	2002
	(17)	(18)	(19)	(20)	(21)	(22)	(23)
<b>All Businesses</b>							
Number of businesses.....	23,240,648	23,645,197	24,113,044	24,448,466	25,007,504	25,605,898	26,434,293
Total receipts.....	17,371,531,836	18,729,888,900	19,717,102,456	21,616,705,144	23,845,405,224	23,752,254,090	23,361,178,481
Business receipts.....	15,418,548,555	16,473,284,387	17,285,188,902	18,899,080,667	20,719,272,866	20,799,323,834	20,741,003,999
Net income (less deficit).....	1,160,565,585	1,311,621,607	1,284,131,816	1,421,748,416	1,470,658,335	1,142,478,029	1,088,304,478
Net income.....	1,444,416,590	1,628,080,417	1,668,090,251	1,864,354,418	2,046,212,168	1,851,745,212	1,781,234,413
Deficit.....	283,851,005	316,458,810	383,959,436	442,606,001	575,553,831	709,267,183	692,929,934
<b>Corporations</b>							
Number of businesses.....	4,631,369	4,710,083	4,848,887	4,935,904	5,045,273	5,135,591	5,266,607
Total receipts.....	15,525,718,006	16,609,707,302	17,323,955,004	18,892,385,693	20,605,808,071	20,272,957,625	19,749,426,052
Business receipts.....	13,659,470,309	14,460,928,696	15,010,264,802	16,313,971,384	17,636,551,348	17,504,288,630	17,297,125,146
Net income (less deficit) ( <sup>1</sup> ).....	838,591,644	956,736,971	895,152,469	985,363,334	986,952,279	648,758,089	596,524,023
Net income.....	1,016,135,059	1,155,242,666	1,144,026,382	1,282,481,469	1,391,008,755	1,155,497,718	1,084,179,817
Deficit.....	177,543,415	198,505,695	248,873,914	297,118,135	404,056,474	506,739,630	487,655,794
<b>C Corporations</b>							
Number of businesses.....	2,317,886	2,248,065	2,249,970	2,198,740	2,172,705	2,136,756	2,100,074
Total receipts.....	12,709,004,468	13,445,458,022	13,996,499,545	15,238,422,201	16,607,287,993	16,214,520,589	15,582,601,688
Business receipts.....	11,087,481,313	11,620,304,753	12,006,145,868	13,071,173,955	14,078,901,182	13,813,168,479	13,455,844,040
Net income (less deficit).....	574,553,924	607,541,446	532,246,228	535,289,061	517,937,235	270,774,336	258,673,938
Net income.....	714,272,006	765,753,475	736,810,215	783,499,456	859,530,894	709,003,299	676,337,238
Deficit.....	139,718,081	158,212,028	204,563,988	248,210,395	341,593,657	438,229,593	417,663,300
<b>1120-RIC and 1120-REIT</b>							
Number of businesses.....	9,067	9,764	10,829	11,389	12,090	12,349	12,156
Total receipts.....	198,619,366	269,011,761	266,322,290	353,094,730	381,042,973	296,924,686	255,897,663
Business receipts.....	--	--	--	--	--	--	--
Net income (less deficit).....	138,792,224	196,132,514	181,117,938	256,317,862	270,479,156	190,296,836	154,371,152
Net income.....	139,966,673	197,367,117	183,243,257	258,420,380	277,261,656	197,629,943	161,308,952
Deficit.....	1,174,450	1,234,604	2,125,319	2,102,518	6,782,500	7,333,108	6,937,800
<b>S Corporations</b>							
Number of businesses.....	2,304,416	2,452,254	2,588,088	2,725,775	2,860,478	2,986,486	3,154,377
Total receipts.....	2,618,094,172	2,895,237,519	3,061,133,169	3,300,868,762	3,617,477,105	3,761,512,350	3,910,926,701
Business receipts.....	2,571,988,996	2,840,623,943	3,004,118,934	3,242,797,429	3,557,650,166	3,691,120,151	3,841,281,106
Total net income (less deficit) ( <sup>2</sup> ).....	125,245,496	153,063,011	181,788,303	193,756,411	198,535,888	187,686,917	183,478,933
Net income.....	161,896,380	192,122,074	223,972,910	240,561,633	254,216,205	248,863,846	246,533,627
Deficit.....	36,650,884	39,059,063	42,184,607	46,805,222	55,680,317	61,176,929	63,054,694
<b>Partnerships</b>							
Number of businesses.....	1,654,256	1,758,627	1,855,348	1,936,919	2,057,500	2,132,117	2,242,169
Total receipts ( <sup>3</sup> ).....	1,002,579,987	1,249,789,312	1,474,879,256	1,754,972,413	2,218,638,870	2,462,461,787	2,582,060,669
Business receipts.....	915,844,403	1,141,963,405	1,356,655,904	1,615,762,245	2,061,764,235	2,278,200,526	2,414,187,093
Net income (less deficit).....	145,218,248	168,240,726	186,704,627	228,438,105	268,990,758	276,334,824	270,667,169
Net income.....	228,157,635	262,373,206	297,874,299	348,467,958	409,972,787	446,069,172	439,761,741
Deficit.....	82,939,388	94,132,480	111,170,672	120,029,853	140,982,029	169,734,347	169,094,572
<b>General ( <sup>4</sup> )</b>							
Number of businesses.....	1,121,195	1,081,363	1,015,678	950,608	936,564	885,457	841,299
Total receipts ( <sup>5</sup> ).....	458,690,125	482,362,036	428,936,952	414,879,711	460,800,631	508,569,485	506,554,952
Business receipts.....	430,892,523	451,004,863	399,306,152	382,760,263	425,752,004	464,251,886	467,422,866
Net income (less deficit).....	77,446,760	88,235,026	82,766,449	85,767,233	101,786,779	101,830,079	100,914,057
Net income.....	106,074,272	113,264,997	107,709,809	108,487,666	127,059,152	128,591,551	125,748,798
Deficit.....	28,627,513	25,029,971	24,943,359	22,720,432	25,272,374	26,761,472	24,834,741
<b>Limited ( <sup>5</sup> )</b>							
Number of businesses.....	311,563	328,210	369,012	396,907	402,232	437,968	454,741
Total receipts ( <sup>3</sup> ).....	386,373,126	474,480,710	585,636,689	701,845,221	884,397,372	935,891,900	987,064,490
Business receipts.....	338,916,079	423,968,766	534,248,684	644,246,861	830,429,874	876,234,279	931,055,315
Net income (less deficit).....	55,458,035	62,946,099	79,328,818	107,937,194	119,512,213	127,448,902	121,126,936
Net income.....	97,721,530	109,035,802	131,493,455	157,244,765	170,929,457	187,146,566	178,135,683
Deficit.....	42,263,496	46,089,703	52,164,637	49,307,571	51,417,244	59,697,664	57,008,747
<b>LLC</b>							
Number of businesses.....	221,498	349,054	470,657	589,403	718,704	808,692	946,130
Total receipts ( <sup>3</sup> ).....	157,516,736	292,946,566	460,305,616	638,247,481	873,441,868	1,018,000,402	1,088,441,226
Business receipts.....	146,035,802	266,989,776	423,101,069	588,755,121	805,582,357	937,714,361	1,015,708,912
Net income (less deficit).....	12,313,453	17,059,601	24,609,360	34,733,678	47,691,767	47,065,843	48,626,175
Net income.....	24,361,833	40,072,407	58,672,036	82,735,527	111,984,178	130,331,055	135,877,260
Deficit.....	12,048,379	23,012,806	34,062,676	48,001,849	64,292,411	83,275,212	87,251,084
<b>Nonfarm Sole Proprietorships</b>							
Number of businesses.....	16,955,023	17,176,487	17,408,809	17,575,643	17,904,731	18,338,190	18,925,517
Total receipts.....	843,233,843	870,392,286	918,268,196	969,347,038	1,020,957,283	1,016,834,678	1,029,691,760
Business receipts.....	843,233,843	870,392,286	918,268,196	969,347,038	1,020,957,283	1,016,834,678	1,029,691,760
Net income (less deficit).....	176,755,693	186,643,910	202,274,720	207,946,977	214,715,298	217,385,116	221,113,286
Net income.....	200,123,896	210,464,545	226,189,570	233,404,991	245,230,626	250,178,322	257,292,855
Deficit.....	23,368,202	23,820,635	23,914,850	25,458,013	30,515,328	32,793,206	36,179,568

n.a. - not available.

<sup>1</sup> For Tax Years beginning in 1987, Total Corporation "Net income (less deficit)" includes "Total net income (less deficit)" from S Corporations and is more comprehensive than what SOI generally publishes.

<sup>2</sup> Prior to Tax Year 1987, "Total net income (less deficit)" from S Corporations only includes "Net income (less deficit)" from S Corporations and is not as comprehensive as data in future years.

<sup>3</sup> For consistency purposes of this publication, what SOI normally publishes as Partnership "Total income" is labeled as "Total receipts."

<sup>4</sup> For Tax Years 1980-1995 General Partnerships include Partnerships listed on the tax return as General and not reported. For Tax Years 1996-1999 General Partnerships include Partnerships listed on the tax return as General, Other and not reported. For Tax Years 2000-2002 General Partnerships include Partnerships listed on the tax return as General, Foreign, Other and not reported.

<sup>5</sup> For Tax Years 1980-1992 Limited Partnerships include Partnerships listed on the tax return as Limited Partnerships. For Tax Years 1993-1995 Limited Partnerships include Partnerships listed on the tax return as Limited Partnerships, General Limited Liability Partnerships, and Limited Liability Partnerships. For Tax Years 1996-1997 Limited Partnerships include Partnerships listed on the tax return as Limited Partnerships. For Tax Years 1998-1999 Limited Partnerships include Partnerships listed on the tax return as Limited Partnerships and Limited Liability Partnerships. For Tax Years 2000-2002 Limited Partnerships include Partnerships listed on the tax return as Domestic Limited Partnerships and Domestic Limited Liability Partnerships.

NOTE: Detail may not add to totals due to rounding.













**Table 3A.--Number of Businesses, Business Receipts, Net Income, and Deficit, by Form of Business and Industry, Tax Year 1998**

[All figures are estimates based on samples--money amounts are in thousands of dollars]

Form of business, item	All industries	Agriculture, forestry, fishing, and hunting	Mining	Utilities	Construction	Manufacturing	Wholesale and retail trade	Transportation and warehousing	Information	Finance and insurance
	(1)	(2)	(3)	(4)	(5)	(6)	(7)	(8)	(9)	(10)
<b>All Businesses</b>										
Number of businesses.....	24,113,045	539,643	179,941	17,662	2,920,802	706,002	3,813,207	969,101	335,332	1,026,302
Business receipts.....	17,285,188,902	131,665,240	147,677,818	499,833,981	1,109,402,772	4,865,936,073	5,041,650,550	543,877,331	771,910,696	1,435,257,053
Net income (less deficit).....	1,284,131,818	3,143,718	6,394,789	33,386,649	65,318,955	268,147,759	117,285,087	24,421,428	31,289,380	367,427,885
Net income.....	1,668,091,253	12,483,647	19,331,265	42,448,390	80,156,917	331,010,906	158,707,639	33,697,693	89,056,619	411,027,844
Deficit.....	383,959,435	9,339,929	12,936,476	9,061,740	14,837,964	62,863,149	41,422,552	9,276,265	57,767,239	43,599,957
<b>Corporations</b>										
Number of businesses.....	4,848,888	135,107	31,467	8,067	551,935	309,912	956,803	159,646	100,977	218,193
Business receipts.....	15,010,264,802	100,398,430	116,905,970	450,830,225	859,139,558	4,591,071,027	4,516,670,915	469,626,605	667,610,273	1,285,017,559
Net income (less deficit)( <sup>1</sup> ).....	895,152,471	1,266,193	2,339,453	31,920,963	31,506,413	254,033,430	95,614,094	16,357,260	35,353,093	291,193,439
Net income.....	1,144,026,384	6,021,329	10,017,694	38,343,308	40,340,592	307,995,283	127,371,881	22,464,817	70,780,532	322,289,879
Deficit.....	248,873,913	4,755,137	7,678,241	6,422,344	8,834,179	53,961,854	31,757,788	6,107,556	35,427,439	31,096,439
<b>C Corporations (<sup>2</sup>)</b>										
Number of businesses.....	2,260,801	65,689	15,988	5,943	246,404	163,295	472,031	78,341	44,895	115,309
Business receipts.....	12,006,145,868	56,012,640	102,328,023	448,214,333	467,247,448	4,107,930,264	3,241,722,259	384,935,892	620,177,682	1,226,629,994
Net income (less deficit).....	713,364,168	231,736	-76,819	31,407,088	10,249,297	218,465,519	57,410,132	12,794,920	29,887,900	279,336,463
Net income.....	920,053,474	2,787,619	7,016,179	37,725,338	15,321,252	267,572,313	82,152,207	17,336,221	62,927,184	307,951,720
Deficit.....	206,689,306	2,555,883	7,094,998	6,318,249	5,071,954	49,106,794	24,742,076	4,541,300	33,039,284	28,615,256
<b>S Corporations</b>										
Number of businesses.....	2,588,088	69,418	15,479	2,124	305,531	146,617	484,772	81,305	56,082	102,884
Business receipts.....	3,004,118,934	44,385,790	14,577,947	2,615,892	391,892,110	483,140,763	1,274,948,656	84,690,713	47,432,591	58,387,565
Total net income (less deficit).....	181,788,303	1,034,457	2,416,272	513,875	21,257,116	35,567,911	38,203,962	3,562,340	5,465,193	11,856,976
Net income.....	223,972,910	3,233,710	2,999,515	617,970	25,019,340	40,422,970	45,219,674	5,128,596	7,853,348	14,338,159
Deficit.....	42,184,607	2,199,254	583,243	104,095	3,762,225	4,855,060	7,015,712	1,566,256	2,388,155	2,481,183
<b>Partnerships</b>										
Number of businesses.....	1,855,348	115,614	29,098	2,448	125,823	34,836	130,288	19,193	21,900	209,150
Business receipts.....	1,356,655,904	15,572,293	25,711,768	48,837,758	106,320,658	247,438,628	304,069,914	31,009,687	98,387,504	88,996,302
Net income (less deficit).....	186,704,627	500,178	4,201,775	1,398,864	7,808,640	10,237,101	5,722,617	1,505,717	-5,773,299	63,268,132
Net income.....	297,875,299	4,148,941	8,556,138	4,034,991	11,973,217	18,574,043	9,967,695	3,488,257	16,204,642	74,310,012
Deficit.....	111,170,672	3,648,762	4,354,363	2,636,127	4,164,578	8,336,943	4,245,077	1,982,540	21,977,941	11,041,880
<b>General (<sup>3</sup>)</b>										
Number of businesses.....	1,015,678	90,796	11,181	340	69,173	18,619	88,078	9,791	12,961	113,083
Business receipts.....	399,306,152	5,592,102	8,271,842	10,833,116	38,642,807	73,335,482	72,443,611	6,442,068	32,426,530	23,391,638
Net income (less deficit).....	82,766,449	1,460,571	575,260	784,292	3,217,570	4,455,912	2,580,004	1,082,522	2,303,426	18,626,318
Net income.....	107,709,809	3,133,629	3,495,446	1,166,756	4,492,334	6,421,416	3,491,361	1,330,410	6,264,782	21,121,278
Deficit.....	24,943,359	1,673,058	2,920,186	382,464	1,274,764	1,965,504	911,357	247,888	3,961,356	2,494,961
<b>Limited (<sup>4</sup>)</b>										
Number of businesses.....	369,013	12,368	11,966	731	17,226	3,488	6,101	1,445	2,460	63,643
Business receipts.....	534,248,684	4,684,558	10,448,278	21,525,717	28,525,870	85,139,650	134,538,787	10,149,777	50,911,219	40,964,184
Net income (less deficit).....	79,328,818	-471,446	3,178,831	522,013	1,796,126	3,668,785	1,618,212	1,052,098	-3,686,482	35,132,990
Net income.....	131,493,455	574,188	3,825,546	2,449,036	3,550,642	6,826,390	2,936,466	1,603,172	8,634,336	39,657,223
Deficit.....	52,164,637	1,045,634	646,715	1,927,023	1,754,516	3,157,605	1,318,254	551,074	12,320,818	4,524,233
<b>LLC</b>										
Number of businesses.....	470,657	12,450	5,951	1,376	39,424	12,729	36,109	7,957	6,479	32,425
Business receipts.....	423,101,069	5,295,633	6,991,649	16,478,925	39,151,981	88,963,496	97,087,516	14,417,841	15,049,755	24,640,479
Net income (less deficit).....	24,609,360	-488,947	447,685	92,559	2,794,944	2,112,403	1,524,401	-628,903	-4,390,243	9,508,825
Net income.....	58,672,036	441,124	1,235,146	419,198	3,930,241	5,326,237	3,539,868	554,675	1,305,525	13,531,511
Deficit.....	34,062,676	930,070	787,461	326,639	1,135,297	3,213,834	2,015,466	1,183,578	5,695,767	4,022,686
<b>Nonfarm Sole Proprietorships</b>										
Number of businesses.....	17,408,809	288,922	119,376	7,147	2,243,044	361,254	2,726,116	790,262	212,455	598,959
Business receipts.....	918,268,196	15,694,517	5,060,080	165,998	143,942,556	27,426,418	220,909,721	43,241,039	5,912,919	61,243,192
Net income (less deficit).....	202,274,720	1,377,347	-146,439	66,822	26,003,902	3,877,228	15,948,376	6,558,451	1,709,586	12,966,314
Net income.....	226,189,570	2,313,377	757,433	70,091	27,843,108	4,441,580	21,368,063	7,744,619	2,071,445	14,427,953
Deficit.....	23,914,850	936,030	903,872	3,269	1,839,207	564,352	5,419,687	1,186,169	361,859	1,461,638

Footnotes at end of table.

**Table 3A.--Number of Businesses, Business Receipts, Net Income, and Deficit, by Form of Business and Industry, Tax Year 1998--Continued**

[All figures are estimates based on samples--money amounts are in thousands of dollars]

Form of business, item	Real estate and rental and leasing	Professional, scientific, and technical services	Management of companies (holding companies)	Administrative and support and waste management services	Educational services	Health care and social assistance	Arts, entertainment, and recreation	Accommodation, food services, and drinking places	Other services	Religious, grantmaking, civic, professional, and similar	Unclassified industries
	(11)	(12)	(13)	(14)	(15)	(16)	(17)	(18)	(19)	(20)	(21)
<b>All Businesses</b>											
Number of businesses.....	2,205,935	3,173,498	42,918	1,479,954	334,469	1,851,412	1,110,054	606,023	2,221,313	212,939	366,536
Business receipts.....	260,368,200	796,236,596	92,627,484	320,982,170	27,931,863	497,570,878	102,238,841	407,944,777	220,892,768	2,607,373	8,576,438
Net income (less deficit).....	77,861,007	108,112,007	63,284,091	21,606,621	2,248,139	48,479,669	7,790,652	14,100,566	20,493,675	1,420,425	1,919,314
Net income.....	120,638,642	132,646,277	71,848,728	28,656,644	3,096,368	61,528,291	16,520,105	25,832,332	25,137,968	1,495,125	2,769,852
Deficit.....	42,777,637	24,534,269	8,564,637	7,050,023	848,228	13,048,622	8,729,453	11,731,767	4,644,292	74,700	850,538
<b>Corporations</b>											
Number of businesses.....	521,917	623,784	30,931	200,449	36,959	307,258	92,966	245,334	300,313	N/A	16,870
Business receipts.....	175,701,248	540,924,209	90,497,966	263,656,627	23,196,929	357,156,938	60,387,702	295,686,536	143,395,451	N/A	2,391,635
Net income (less deficit) (¹).....	20,032,614	23,825,752	57,992,086	11,319,256	952,453	4,703,934	2,665,760	8,708,478	5,570,156	N/A	-202,357
Net income.....	31,165,308	42,062,770	62,833,377	16,412,398	1,447,682	14,339,113	5,929,494	15,734,084	8,127,748	N/A	349,095
Deficit.....	11,132,696	18,237,017	4,841,291	5,093,142	495,228	9,635,179	3,263,735	7,025,607	2,557,591	N/A	551,452
<b>C Corporations (²)</b>											
Number of businesses.....	221,716	252,632	19,460	77,983	16,432	172,414	38,084	98,243	149,877	N/A	6,066
Business receipts.....	120,932,399	361,250,574	87,283,096	170,634,628	12,899,509	278,203,449	35,087,417	197,416,935	86,169,085	N/A	1,070,241
Net income (less deficit).....	4,871,421	3,531,659	55,306,953	3,180,597	285,851	-1,284,344	805,624	5,083,593	1,836,226	N/A	40,352
Net income.....	12,419,771	17,851,123	59,607,765	7,040,055	662,607	6,713,766	2,380,855	9,194,448	3,335,123	N/A	55,928
Deficit.....	7,548,352	14,319,463	4,300,812	3,859,458	376,756	7,998,110	1,575,232	4,110,856	1,498,897	N/A	15,576
<b>S Corporations</b>											
Number of businesses.....	300,201	371,152	11,471	122,466	20,527	134,844	54,882	147,091	150,437	N/A	10,804
Business receipts.....	54,768,849	179,673,635	3,214,870	93,020,999	10,297,420	78,953,489	25,300,285	98,269,601	57,226,366	N/A	1,321,394
Total net income (less deficit).....	15,161,193	20,294,093	2,685,133	8,138,659	666,602	5,988,278	1,860,136	3,624,885	3,733,930	N/A	-242,709
Net income.....	18,745,537	24,211,647	3,225,612	9,372,343	785,075	7,625,347	3,548,639	6,539,636	4,792,625	N/A	293,167
Deficit.....	3,584,344	3,917,554	540,479	1,233,684	118,472	1,637,069	1,688,503	2,914,751	1,058,694	N/A	535,876
<b>Partnerships</b>											
Number of businesses.....	812,404	118,340	11,987	28,268	4,697	37,767	30,319	57,912	63,763	N/A	1,541
Business receipts.....	41,348,441	147,764,823	2,129,518	22,840,826	1,073,235	59,773,854	22,156,807	78,969,307	14,128,213	N/A	126,369
Net income (less deficit).....	40,187,832	38,732,610	5,292,005	1,213,360	-14,143	7,913,211	26,492	3,374,509	1,070,062	N/A	38,964
Net income.....	70,435,470	42,440,066	9,015,351	2,111,820	116,846	10,456,934	3,412,404	6,946,094	1,637,607	N/A	44,771
Deficit.....	30,247,638	3,707,456	3,723,346	898,460	130,989	2,543,723	3,385,911	3,571,585	567,545	N/A	5,807
<b>General (³)</b>											
Number of businesses.....	399,000	64,124	3,077	15,597	2,734	20,159	16,801	30,899	48,119	N/A	1,146
Business receipts.....	8,109,819	62,707,752	461,622	4,048,364	252,245	17,966,586	6,222,789	21,371,210	6,763,109	N/A	23,458
Net income (less deficit).....	18,616,998	20,162,890	598,743	522,565	26,699	4,681,131	753,217	1,406,109	881,286	N/A	30,936
Net income.....	23,920,224	20,814,456	2,017,696	594,321	32,590	5,000,999	1,531,706	1,833,514	1,010,766	N/A	36,125
Deficit.....	5,303,226	651,566	1,418,953	71,755	5,892	319,868	778,489	427,404	129,480	N/A	5,189
<b>Limited (⁴)</b>											
Number of businesses.....	212,838	12,630	3,944	1,214	98	4,995	2,889	8,588	2,015	N/A	375
Business receipts.....	17,700,146	51,478,821	195,939	7,956,966	289,017	22,588,714	10,056,807	35,117,416	1,976,313	N/A	505
Net income (less deficit).....	14,931,331	14,074,114	3,069,115	581,525	-10,432	1,973,743	-54,373	1,849,712	97,494	N/A	5,463
Net income.....	33,253,393	15,271,996	3,999,473	828,100	39,928	2,920,711	1,356,212	3,565,697	195,430	N/A	5,514
Deficit.....	18,322,062	1,197,882	930,358	246,576	50,361	946,968	1,410,585	1,715,985	97,935	N/A	51
<b>LLC</b>											
Number of businesses.....	200,566	41,587	4,966	11,457	1,864	12,613	10,629	18,425	13,629	N/A	20
Business receipts.....	15,538,476	33,578,249	1,471,957	10,835,496	531,973	19,218,553	5,877,211	22,480,681	5,388,790	N/A	102,407
Net income (less deficit).....	6,639,502	4,495,606	1,624,147	109,270	-30,410	1,258,336	-672,352	118,688	91,000	N/A	2,565
Net income.....	13,261,852	6,353,614	2,998,182	689,399	44,328	2,535,224	524,486	1,546,883	431,411	N/A	3,132
Deficit.....	6,622,350	1,858,008	1,374,035	580,129	74,737	1,276,887	1,196,837	1,428,195	340,129	N/A	567
<b>Nonfarm Sole Proprietorships</b>											
Number of businesses.....	871,614	2,431,374	N/A	1,251,237	292,813	1,506,387	986,769	302,777	1,857,237	212,939	348,125
Business receipts.....	43,318,511	107,547,564	N/A	34,485,717	3,661,699	80,640,086	19,694,332	33,288,934	63,369,104	2,607,373	6,058,434
Net income (less deficit).....	17,640,561	45,553,645	N/A	9,074,005	1,309,829	35,862,524	5,098,400	2,017,579	13,853,457	1,420,425	2,082,707
Net income.....	19,037,864	48,143,441	N/A	10,132,426	1,531,840	36,732,244	7,178,207	3,152,154	15,372,613	1,495,125	2,375,986
Deficit.....	1,397,303	2,589,796	N/A	1,058,421	222,011	869,720	2,079,807	1,134,575	1,519,156	74,700	293,279

N/A - not applicable.

¹ Total Corporation "Net income (less deficit)" includes "Total net income (less deficit)" from S Corporations and is more comprehensive than what SOI generally publishes.

² For this table, the computations for C Corporations also include 1120-RIC and 1120-REIT returns.

³ For Tax Year 1998 General Partnerships include partnerships listed on the tax return as General, Other and blank.

⁴ For Tax Year 1998 Limited Partnerships include Limited Partnerships and Limited Liability Partnerships.

NOTE: Detail may not add to total because of rounding.



**Table 3B.--Number of Businesses, Business Receipts, Net Income, and Deficit, by Form of Business and Industry, Tax Year 1999**

[All figures are estimates based on samples--money amounts are in thousands of dollars]

Form of business, item	All industries	Agriculture, forestry, fishing, and hunting	Mining	Utilities	Construction	Manufacturing	Wholesale and retail trade	Transportation and warehousing	Information	Finance and insurance
	(1)	(2)	(3)	(4)	(5)	(6)	(7)	(8)	(9)	(10)
<b>All Businesses</b>										
Number of businesses.....	24,448,466	563,589	176,043	18,733	2,991,812	694,345	3,759,529	972,915	364,517	1,016,375
Business receipts.....	18,899,080,668	134,816,195	142,755,807	541,101,464	1,253,264,625	5,138,844,358	5,390,347,492	569,394,999	884,229,947	1,928,698,837
Net income (less deficit).....	1,421,748,414	4,963,514	6,843,334	40,915,599	73,542,134	272,261,935	121,558,071	20,354,248	38,286,294	463,708,734
Net income.....	1,864,354,420	13,937,084	20,261,718	46,130,529	88,518,927	344,567,830	173,366,185	32,202,024	119,994,339	506,510,894
Deficit.....	442,605,999	8,973,569	13,418,384	5,214,930	14,976,794	72,305,896	51,808,114	11,847,777	81,708,045	42,802,160
<b>Corporations</b>										
Number of businesses.....	4,935,904	141,678	30,849	7,044	580,302	297,714	948,371	160,195	107,628	217,780
Business receipts.....	16,313,971,385	104,645,084	109,685,715	478,836,511	973,521,174	4,801,823,220	4,789,438,632	485,223,550	760,824,421	1,740,167,487
Net income (less deficit)(*).....	985,363,332	2,375,446	731,214	39,073,530	35,851,126	255,594,801	98,451,496	11,131,614	43,394,087	365,650,230
Net income.....	1,282,481,471	6,614,998	9,280,430	42,368,292	45,139,310	318,701,505	139,309,819	19,385,091	97,518,412	397,080,911
Deficit.....	297,118,133	4,239,551	8,549,216	3,294,762	9,288,185	63,106,705	40,858,323	8,253,478	54,124,325	31,430,681
<b>C Corporations (†)</b>										
Number of businesses.....	2,210,129	70,306	14,772	5,584	246,775	151,824	454,773	72,675	49,160	114,026
Business receipts.....	13,071,173,955	57,328,751	96,063,482	475,658,599	516,969,690	4,303,643,709	3,431,344,964	397,193,258	709,929,597	1,682,078,285
Net income (less deficit).....	791,606,921	1,010,347	-1,306,291	38,831,103	10,875,231	218,512,766	58,979,787	8,366,054	36,717,057	356,062,254
Net income.....	1,041,919,838	2,961,219	6,668,489	42,072,320	16,688,111	276,562,059	92,082,454	14,566,133	88,049,936	384,558,606
Deficit.....	250,312,911	1,950,871	7,974,780	3,241,217	5,812,880	58,049,293	33,102,667	6,200,079	51,332,879	28,496,352
<b>S Corporations</b>										
Number of businesses.....	2,725,775	71,372	16,077	1,460	333,527	145,890	493,598	87,520	58,468	103,754
Business receipts.....	3,242,797,429	47,316,333	13,622,233	3,177,912	456,551,484	498,179,511	1,358,093,668	88,030,292	50,894,824	58,089,202
Total net income (less deficit).....	193,756,411	1,365,099	2,037,505	242,427	24,975,895	37,082,035	39,471,709	2,765,560	6,677,030	9,587,976
Net income.....	240,561,633	3,653,779	2,611,941	295,972	28,451,199	42,139,446	47,227,365	4,818,958	9,468,476	12,522,305
Deficit.....	46,805,222	2,288,680	574,436	53,545	3,475,305	5,057,412	7,755,656	2,053,399	2,791,446	2,934,329
<b>Partnerships</b>										
Number of businesses.....	1,936,919	115,006	28,095	2,612	127,581	37,072	141,851	22,344	20,343	219,233
Business receipts.....	1,615,762,245	13,518,418	28,635,592	62,156,799	125,518,084	309,693,927	372,693,889	38,182,156	116,417,632	102,140,730
Net income (less deficit).....	228,438,105	1,343,662	6,252,201	1,819,162	9,360,698	13,058,214	6,441,214	2,046,745	-6,930,530	83,643,256
Net income.....	348,467,958	4,938,301	10,237,584	3,728,757	13,191,380	21,586,149	11,910,451	4,545,507	20,130,834	93,379,163
Deficit.....	120,029,853	3,594,639	3,985,383	1,909,595	3,830,682	8,527,935	5,469,238	2,498,762	27,061,363	9,735,907
<b>General (‡)</b>										
Number of businesses.....	950,608	85,161	10,815	562	64,934	18,022	85,523	10,210	10,461	106,696
Business receipts.....	382,760,263	4,195,470	8,533,483	5,623,536	38,250,028	58,245,905	87,510,848	6,316,124	31,613,268	25,144,449
Net income (less deficit).....	85,767,233	1,871,577	1,192,332	782,459	3,405,775	3,922,729	2,458,581	1,208,171	2,483,966	23,882,686
Net income.....	108,487,666	3,113,116	3,783,675	1,145,811	4,498,980	5,575,818	3,577,461	1,532,958	6,304,209	25,489,562
Deficit.....	22,720,433	1,241,539	2,591,343	363,351	1,093,205	1,653,089	1,118,880	324,788	3,820,243	1,606,876
<b>Limited (¶)</b>										
Number of businesses.....	396,908	12,532	9,907	1,113	13,998	2,987	8,444	1,947	2,036	68,007
Business receipts.....	644,246,861	3,824,836	12,663,341	35,833,837	32,406,961	115,079,403	148,171,203	10,840,622	62,306,828	47,683,031
Net income (less deficit).....	107,937,194	-361,913	4,342,538	1,171,164	2,538,434	6,212,157	2,246,290	1,368,209	-2,212,176	42,286,392
Net income.....	157,244,765	609,892	4,872,244	2,119,068	3,728,794	8,545,529	3,355,429	2,137,725	11,344,940	46,538,059
Deficit.....	49,307,571	971,805	529,706	947,904	1,190,360	2,333,372	1,109,139	769,516	13,557,116	4,251,666
<b>LLC</b>										
Number of businesses.....	589,403	17,312	7,372	936	48,650	16,062	47,885	10,188	7,846	44,530
Business receipts.....	588,755,121	5,498,111	7,438,788	20,699,426	54,861,096	136,368,619	137,011,837	21,025,410	22,497,536	29,313,251
Net income (less deficit).....	34,733,678	-166,002	717,331	-134,461	3,416,489	2,923,328	1,736,342	-529,635	-7,202,319	17,474,178
Net income.....	82,735,527	1,215,293	1,581,665	463,879	4,963,606	7,464,802	4,977,561	874,824	2,481,685	21,351,542
Deficit.....	48,001,849	1,381,295	864,334	598,339	1,547,118	4,541,474	3,241,219	1,404,459	9,684,004	3,877,364
<b>Nonfarm Sole Proprietorships</b>										
Number of businesses.....	17,575,643	306,905	117,099	9,077	2,283,929	359,559	2,669,307	790,376	236,546	579,362
Business receipts.....	969,347,038	16,652,693	4,434,500	108,154	154,225,367	27,327,211	228,214,971	45,989,293	6,987,894	86,390,620
Net income (less deficit).....	207,946,977	1,244,406	-140,081	22,907	28,330,310	3,608,920	16,665,361	7,175,889	1,822,737	14,415,248
Net income.....	233,404,991	2,383,785	743,704	33,480	30,188,237	4,280,176	22,145,915	8,271,426	2,345,093	16,050,820
Deficit.....	25,458,013	1,139,379	883,785	10,573	1,857,927	671,256	5,480,553	1,095,537	522,357	1,635,572

Footnotes at end of table.

**Table 3B.--Number of Businesses, Business Receipts, Net Income, and Deficit, by Form of Business and Industry, Tax Year 1999--Continued**

[All figures are estimates based on samples--money amounts are in thousands of dollars]

Form of business, item	Real estate and rental and leasing	Professional, scientific, and technical services	Management of companies (holding companies)	Administrative and support and waste management services	Educational services	Health care and social assistance	Arts, entertainment, and recreation	Accommodation, food services, and drinking places	Other services	Religious, grantmaking, civic, professional, and similar	Unclassified industries
	(11)	(12)	(13)	(14)	(15)	(16)	(17)	(18)	(19)	(20)	(21)
<b>All Businesses</b>											
Number of businesses.....	2,230,947	3,223,670	55,907	1,693,387	367,654	1,863,824	1,167,836	630,425	2,154,135	210,843	291,981
Business receipts.....	280,466,415	855,476,153	95,722,366	352,129,454	26,048,213	519,887,619	115,655,479	436,626,093	222,514,017	2,209,867	8,891,250
Net income (less deficit).....	82,461,634	103,489,041	73,997,346	20,955,739	2,383,814	49,983,138	8,222,183	15,954,203	19,343,018	1,208,280	1,316,153
Net income.....	129,509,061	136,420,383	85,042,620	27,631,217	3,396,647	64,051,082	17,723,489	27,562,816	24,280,677	1,320,620	1,926,279
Deficit.....	47,047,426	32,931,342	11,045,273	6,675,477	1,012,832	14,067,944	9,501,305	11,608,614	4,937,658	112,340	610,124
<b>Corporations</b>											
Number of businesses.....	521,447	657,153	43,246	205,011	35,196	303,499	93,922	252,113	305,725	N/A	27,031
Business receipts.....	185,450,183	576,276,292	91,583,476	283,700,509	20,532,679	371,442,071	70,756,712	318,528,271	146,498,454	N/A	5,036,944
Net income (less deficit)( <sup>1</sup> ).....	14,525,074	17,633,962	67,069,382	8,865,906	666,803	5,883,711	2,450,222	11,065,417	4,828,525	N/A	120,785
Net income.....	26,723,002	43,324,463	74,005,614	13,705,989	1,384,796	15,926,481	6,389,531	17,528,785	7,629,604	N/A	464,438
Deficit.....	12,197,926	25,690,502	6,936,231	4,840,083	717,992	10,042,770	3,939,308	6,463,368	2,801,078	N/A	343,651
<b>C Corporations (<sup>2</sup>)</b>											
Number of businesses.....	214,262	259,460	23,526	71,327	14,353	165,886	35,576	94,577	140,920	N/A	10,348
Business receipts.....	126,943,155	370,936,482	87,892,147	186,717,710	11,615,065	286,220,509	38,832,310	208,611,516	82,132,863	N/A	1,061,862
Net income (less deficit).....	2,810,303	-4,515,568	56,275,439	2,781,004	21,357	-1,716,764	-356,592	7,226,673	1,234,499	N/A	-201,738
Net income.....	11,028,235	17,205,755	60,573,733	6,205,359	628,573	6,715,148	1,774,765	10,656,829	2,878,130	N/A	43,984
Deficit.....	8,217,931	21,721,323	4,298,294	3,424,355	607,215	8,431,912	2,131,357	3,430,156	1,643,630	N/A	245,720
<b>S Corporations</b>											
Number of businesses.....	307,185	397,693	19,720	133,684	20,843	137,613	58,346	157,536	164,805	N/A	16,683
Business receipts.....	58,507,028	205,339,810	3,691,329	96,982,799	8,917,614	85,221,562	31,924,402	109,916,755	64,365,591	N/A	3,975,082
Total net income (less deficit).....	11,714,771	22,149,530	10,793,943	6,084,902	645,446	7,600,475	2,806,814	3,838,744	3,594,026	N/A	322,523
Net income.....	15,694,767	26,118,708	13,431,881	7,500,630	756,223	9,211,333	4,614,766	6,871,956	4,751,474	N/A	420,454
Deficit.....	3,979,995	3,969,179	2,637,937	1,415,728	110,777	1,610,858	1,807,951	3,033,212	1,157,448	N/A	97,931
<b>Partnerships</b>											
Number of businesses.....	858,066	122,773	12,661	32,508	6,015	39,890	33,705	63,162	51,822	N/A	2,182
Business receipts.....	52,143,490	172,277,572	4,138,910	31,147,073	1,359,899	65,685,097	25,444,429	81,804,555	12,298,764	N/A	505,229
Net income (less deficit).....	49,665,658	40,628,476	6,927,964	1,512,770	123,489	8,486,828	421,718	2,733,972	883,768	N/A	18,840
Net income.....	83,003,855	44,880,009	11,037,006	2,387,425	204,424	11,255,870	3,925,572	6,602,193	1,416,643	N/A	106,835
Deficit.....	33,338,198	4,251,533	4,109,042	874,654	80,935	2,769,042	3,503,854	3,868,222	532,875	N/A	87,995
<b>General (<sup>3</sup>)</b>											
Number of businesses.....	377,717	54,360	2,709	17,423	3,448	17,602	16,184	30,563	37,457	N/A	762
Business receipts.....	9,209,131	52,980,673	294,875	5,339,017	234,885	16,510,480	6,072,807	21,365,619	5,245,444	N/A	74,221
Net income (less deficit).....	19,373,161	15,887,529	1,386,583	510,427	17,022	4,442,354	866,692	1,438,950	655,267	N/A	-19,029
Net income.....	24,778,501	16,525,330	2,557,509	636,020	44,426	4,655,789	1,586,373	1,926,047	747,882	N/A	8,199
Deficit.....	5,405,340	637,801	1,170,926	125,592	27,404	213,435	719,681	487,097	92,615	N/A	27,228
<b>Limited (<sup>4</sup>)</b>											
Number of businesses.....	229,572	16,945	4,745	2,701	180	6,245	4,132	9,016	2,101	N/A	300
Business receipts.....	20,470,814	73,994,646	2,110,770	7,017,025	258,098	25,320,021	11,610,864	32,484,727	2,140,787	N/A	29,047
Net income (less deficit).....	22,566,267	19,626,628	3,396,412	546,176	31,606	2,188,901	296,921	1,527,297	166,385	N/A	-493
Net income.....	40,399,430	20,424,639	4,426,640	740,350	39,237	3,138,158	1,529,429	3,066,015	228,512	N/A	676
Deficit.....	17,833,163	798,011	1,030,229	194,174	7,631	949,257	1,232,508	1,538,718	62,127	N/A	1,169
<b>LLC</b>											
Number of businesses.....	250,777	51,468	5,207	12,384	2,387	16,042	13,389	23,583	12,264	N/A	1,120
Business receipts.....	22,463,545	45,302,253	1,733,265	18,791,031	866,917	23,854,596	7,760,757	27,954,209	4,912,533	N/A	401,961
Net income (less deficit).....	7,726,230	5,114,319	2,144,969	456,167	74,861	1,855,573	-741,895	-232,276	62,116	N/A	38,361
Net income.....	17,825,925	7,930,041	4,052,857	1,011,055	120,761	3,461,923	809,770	1,610,131	440,249	N/A	97,960
Deficit.....	10,099,695	2,815,721	1,907,888	554,888	45,900	1,606,349	1,551,665	1,842,407	378,133	N/A	59,599
<b>Nonfarm Sole Proprietorships</b>											
Number of businesses.....	851,434	2,443,744	N/A	1,455,868	326,443	1,520,435	1,040,209	315,150	1,796,588	210,843	262,768
Business receipts.....	42,872,742	106,922,289	N/A	37,281,872	4,155,635	82,760,451	19,454,338	36,293,267	63,716,799	2,209,867	3,349,077
Net income (less deficit).....	18,270,902	45,226,603	N/A	10,577,063	1,593,522	35,612,599	5,350,243	2,154,814	13,630,725	1,208,280	1,176,528
Net income.....	19,782,204	48,215,911	N/A	11,537,803	1,807,427	36,868,731	7,408,386	3,431,838	15,234,430	1,320,620	1,355,006
Deficit.....	1,511,302	2,989,307	N/A	960,740	213,905	1,256,132	2,058,143	1,277,024	1,603,705	112,340	178,478

N/A - not applicable.

<sup>1</sup> Total Corporation "Net income (less deficit)" includes "Total net income (less deficit)" from S Corporations and is more comprehensive than what SOI generally publishes.

<sup>2</sup> For this table, the computations for C Corporations also include 1120-RIC and 1120-REIT returns.

<sup>3</sup> For Tax Year 1999 General Partnerships include partnerships listed on the tax return as General, Other and blank.

<sup>4</sup> For Tax Year 1999 Limited Partnerships include Limited Partnerships and Limited Liability Partnerships.

NOTE: Detail may not add to total because of rounding.

**Table 3C.--Number of Businesses, Business Receipts, Net Income, and Deficit, by Form of Business and Industry, Tax Year 2000**

[All figures are estimates based on samples--money amounts are in thousands of dollars]

Form of business, item	All industries	Agriculture, forestry, fishing, and hunting	Mining	Utilities	Construction	Manufacturing	Wholesale and retail trade	Transportation and warehousing	Information	Finance and insurance
	(1)	(2)	(3)	(4)	(5)	(6)	(7)	(8)	(9)	(10)
<b>All Businesses</b>										
Number of businesses.....	25,007,505	532,328	165,304	24,441	2,958,179	678,953	3,797,576	1,076,305	427,654	1,043,242
Business receipts.....	18,659,570,396	122,612,734	146,867,803	708,180,639	1,194,678,304	5,287,885,546	5,490,535,822	558,173,928	824,439,100	1,628,868,725
Net income (less deficit).....	1,201,936,567	4,305,215	12,129,647	29,318,476	62,456,542	283,928,550	107,547,979	16,466,208	12,061,210	401,601,964
Net income.....	1,636,649,354	10,079,049	18,010,790	35,430,405	76,315,388	367,392,144	167,064,668	28,876,412	98,830,177	446,018,129
Deficit.....	434,712,784	5,773,836	5,881,144	6,111,928	13,858,846	83,463,593	59,516,688	12,410,204	86,768,967	44,416,166
<b>Corporations</b>										
Number of businesses.....	5,045,274	140,851	32,578	7,968	597,902	288,506	959,575	160,437	118,073	221,394
Business receipts.....	17,636,551,349	106,085,760	140,917,053	707,815,083	1,034,087,166	5,259,173,394	5,267,581,835	505,713,781	817,186,647	1,525,629,096
Net income (less deficit)( <sup>1</sup> ).....	986,952,278	2,771,799	11,568,288	29,268,805	35,757,665	279,610,134	92,637,276	8,959,964	10,171,572	387,653,903
Net income.....	1,391,008,755	7,549,336	16,664,668	35,355,913	46,969,598	362,321,332	145,734,841	19,984,584	96,384,845	429,289,049
Deficit.....	404,056,474	4,777,538	5,096,381	6,087,107	11,211,933	82,711,197	53,097,565	11,024,620	86,213,273	41,635,148
<b>C Corporations (<sup>2</sup>)</b>										
Number of businesses.....	2,184,795	68,555	14,892	5,413	232,294	141,687	453,838	71,417	55,995	104,563
Business receipts.....	14,078,901,184	57,708,101	122,891,531	703,863,380	522,979,306	4,737,156,398	3,767,376,961	414,456,985	764,211,744	1,452,461,321
Net income (less deficit).....	788,416,390	1,099,041	7,610,738	29,085,238	9,873,890	246,352,850	54,099,727	6,716,444	4,031,594	373,773,331
Net income.....	1,136,792,550	3,070,493	12,155,823	35,048,390	16,460,765	323,064,519	96,649,397	14,990,511	86,311,839	411,646,454
Deficit.....	348,376,157	1,971,453	4,545,086	5,963,151	6,586,875	76,711,668	42,549,670	8,274,067	82,280,245	37,873,124
<b>S Corporations</b>										
Number of businesses.....	2,860,478	72,296	17,686	2,555	365,608	146,819	505,737	89,020	62,078	116,831
Business receipts.....	3,557,650,166	48,377,659	18,025,522	3,951,703	511,107,860	522,016,996	1,500,204,874	91,256,796	52,974,903	73,167,775
Total net income (less deficit).....	198,535,888	1,672,758	3,957,550	183,567	25,883,775	33,257,284	38,537,549	2,243,520	6,139,978	13,880,572
Net income.....	254,216,205	4,478,843	4,508,845	307,523	30,508,833	39,256,813	49,085,444	4,994,073	10,073,006	17,642,595
Deficit.....	55,680,317	2,806,085	551,295	123,956	4,625,058	5,999,529	10,547,895	2,750,553	3,933,028	3,762,024
<b>Partnerships</b>										
Number of businesses.....	2,057,500	113,931	26,084	2,453	115,509	37,950	148,305	26,941	26,945	251,657
Business receipts.....	2,061,764	16,320	57,347	107,719	140,387	411,568	493,306	43,745	139,237	131,752
Net income (less deficit).....	268,991	214	15,898	3,608	10,320	17,284	7,045	2,676	-3,497	99,656
Net income.....	409,973	4,668	20,474	5,896	14,034	26,947	14,372	5,491	20,517	115,087
Deficit.....	140,982	4,454	4,576	2,288	3,714	9,663	7,327	2,815	24,014	15,431
<b>General (<sup>3</sup>)</b>										
Number of businesses.....	936,564	80,041	10,442	261	54,608	17,908	85,311	13,753	13,772	115,364
Business receipts.....	425,752	5,258	13,740	8,015	37,885	67,696	99,816	6,574	39,208	26,317
Net income (less deficit).....	101,787	1,252	5,067	1,253	3,595	4,621	2,435	1,177	2,915	32,836
Net income.....	127,059	2,810	7,770	1,558	4,471	6,088	3,392	1,816	6,312	36,385
Deficit.....	25,272	1,558	2,704	305	876	1,467	957	639	3,397	3,548
<b>Limited (<sup>4</sup>)</b>										
Number of businesses.....	402,232	12,469	7,482	682	10,352	1,933	8,242	1,487	1,503	78,455
Business receipts.....	830,430	3,705	19,978	54,237	36,292	155,576	212,811	12,241	63,814	73,544
Net income (less deficit).....	119,512	-401	7,867	1,553	2,877	8,189	3,959	2,397	580	40,192
Net income.....	170,929	654	8,530	2,725	4,089	10,673	5,238	2,872	10,558	46,406
Deficit.....	51,417	1,055	663	1,172	1,212	2,484	596	475	9,977	6,214
<b>LLC</b>										
Number of businesses.....	718,704	21,421	8,160	1,510	50,548	18,109	54,752	11,702	11,669	57,838
Business receipts.....	805,582	7,357	23,629	45,467	66,210	188,295	180,679	24,930	36,215	31,891
Net income (less deficit).....	47,692	-636	2,964	802	3,848	4,475	651	-898	-6,992	26,628
Net income.....	111,984	1,204	4,174	1,613	5,474	10,187	5,741	802	3,647	32,297
Deficit.....	64,292	1,840	1,210	811	1,626	5,712	5,090	1,701	10,639	5,669
<b>Nonfarm Sole Proprietorships</b>										
Number of businesses.....	17,904,731	277,546	106,642	14,020	2,244,768	352,497	2,689,696	888,927	282,636	570,191
Business receipts.....	1,020,957,283	16,510,654	5,893,403	257,837	160,450,751	28,300,584	222,460,681	52,416,402	7,113,216	103,107,877
Net income (less deficit).....	214,715,298	1,533,202	545,461	46,063	26,688,557	4,301,132	14,903,658	7,503,568	1,893,135	13,848,405
Net income.....	245,230,626	2,525,045	1,325,648	68,596	29,331,756	5,043,865	21,315,455	8,886,337	2,424,815	16,613,993
Deficit.....	30,515,328	991,844	780,187	22,533	2,643,199	742,733	6,411,796	1,382,769	531,680	2,765,587

Footnotes at end of table.

**Table 3C.--Number of Businesses, Business Receipts, Net Income, and Deficit, by Form of Business and Industry, Tax Year 2000--Continued**

[All figures are estimates based on samples--money amounts are in thousands of dollars]

Form of business, item	Real estate and rental and leasing	Professional, scientific, and technical services	Management of companies (holding companies)	Administrative and support and waste management services	Educational services	Health care and social assistance	Arts, entertainment, and recreation	Accommodation, food services, and drinking places	Other services	Religious, grantmaking, civic, professional, and similar	Unclassified industries
	(11)	(12)	(13)	(14)	(15)	(16)	(17)	(18)	(19)	(20)	(21)
<b>All Businesses</b>											
Number of businesses.....	2,373,298	3,270,162	64,278	1,798,842	394,803	1,945,785	1,208,571	642,061	2,103,502	226,867	275,355
Business receipts.....	315,146,764	931,622,176	133,216,727	394,519,709	28,858,868	563,805,144	123,169,925	473,426,560	244,741,572	2,933,690	5,748,721
Net income (less deficit).....	87,077,469	87,155,800	92,033,462	19,334,538	2,637,723	54,806,309	6,304,888	15,221,225	20,845,350	1,498,270	1,277,086
Net income.....	142,901,801	147,126,920	102,671,023	29,520,694	4,010,504	68,237,725	17,552,136	28,772,909	26,614,063	1,679,507	1,849,846
Deficit.....	55,824,333	59,971,120	11,037,559	10,186,155	1,372,780	13,431,416	11,247,248	13,551,683	5,768,714	181,237	572,759
<b>Corporations</b>											
Number of businesses.....	532,426	689,412	47,542	211,993	36,756	306,352	97,866	257,525	316,138	N/A	21,980
Business receipts.....	204,519,672	623,368,137	127,242,280	313,932,798	22,021,416	403,580,914	64,157,666	346,989,626	164,175,721	N/A	2,373,305
Net income (less deficit)( <sup>1</sup> ).....	14,935,833	-3,906,788	84,733,578	5,987,563	816,534	8,171,921	1,232,220	11,155,487	5,828,456	N/A	-1,933
Net income.....	29,322,559	45,913,867	90,006,013	13,622,169	1,811,683	17,428,292	5,630,381	17,775,976	9,022,211	N/A	221,437
Deficit.....	14,386,726	49,820,656	5,672,434	7,634,605	995,148	9,256,371	4,398,161	6,620,488	3,193,756	N/A	223,369
<b>C Corporations (<sup>2</sup>)</b>											
Number of businesses.....	212,680	263,494	26,357	72,978	15,125	163,465	35,395	93,618	141,282	N/A	11,747
Business receipts.....	138,723,611	400,696,546	122,928,517	204,978,744	13,743,225	304,962,586	34,866,246	227,687,772	85,900,693	N/A	1,307,517
Net income (less deficit).....	1,450,889	-26,918,719	75,886,309	-487,166	96,848	-1,287,652	-405,031	6,497,107	1,021,006	N/A	-80,054
Net income.....	10,906,984	17,834,015	80,199,791	5,527,204	964,208	6,549,491	1,901,142	10,435,175	2,987,290	N/A	89,059
Deficit.....	9,456,094	44,752,734	4,313,482	6,014,369	867,359	7,837,142	2,306,173	3,938,068	1,966,285	N/A	169,112
<b>S Corporations</b>											
Number of businesses.....	319,746	425,918	21,185	139,015	21,631	142,887	62,471	163,907	174,856	N/A	10,233
Business receipts.....	65,796,061	222,671,591	4,313,763	108,954,054	8,278,191	98,618,328	29,291,420	119,301,854	78,275,028	N/A	1,065,788
Total net income (less deficit).....	13,484,944	23,011,931	8,847,269	6,474,729	719,686	9,459,573	1,637,251	4,658,380	4,807,450	N/A	78,121
Net income.....	18,415,575	28,079,852	9,806,222	8,094,965	847,475	10,878,801	3,729,239	7,340,801	6,034,921	N/A	132,378
Deficit.....	4,930,632	5,067,922	1,358,952	1,620,236	127,789	1,419,229	2,091,988	2,682,420	1,227,471	N/A	54,257
<b>Partnerships</b>											
Number of businesses.....	905,796	135,905	16,736	37,696	5,752	44,038	35,091	62,076	61,643	N/A	2,991
Business receipts.....	61,899,580	193,998,910	5,974,447	40,370,566	2,033,451	73,247,847	38,443,515	89,091,640	15,045,733	N/A	276,756
Net income (less deficit).....	51,598,841	42,945,726	7,299,884	1,771,173	75,145	9,758,764	-302,694	1,820,136	824,433	N/A	-4,276
Net income.....	91,406,835	49,516,987	12,665,010	2,978,182	241,673	12,575,743	4,028,424	7,499,357	1,556,234	N/A	18,979
Deficit.....	39,807,995	6,571,261	5,365,125	1,207,009	166,528	2,816,979	4,331,118	5,679,221	731,801	N/A	23,255
<b>General (<sup>3</sup>)</b>											
Number of businesses.....	366,696	56,581	2,500	18,099	3,308	16,237	16,958	25,712	37,859	N/A	1,154
Business receipts.....	9,456,095	53,075,905	225,176	5,748,549	261,393	16,786,348	13,161,141	16,727,609	5,744,432	N/A	54,501
Net income (less deficit).....	19,264,923	17,847,674	1,415,642	446,421	-11,057	4,648,902	1,140,120	1,252,200	632,191	N/A	20
Net income.....	24,838,280	18,442,731	3,472,805	548,912	35,265	4,820,173	1,789,919	1,752,693	753,859	N/A	2,402
Deficit.....	5,573,357	595,057	2,057,163	102,492	46,322	171,271	649,799	500,493	121,667	N/A	2,382
<b>Limited (<sup>4</sup>)</b>											
Number of businesses.....	227,085	18,488	6,165	3,110	71	8,073	3,667	8,499	3,339	N/A	1,130
Business receipts.....	21,684,835	83,972,072	1,707,402	11,778,902	315,263	28,416,653	12,912,004	35,097,027	2,346,855	N/A	--
Net income (less deficit).....	23,225,545	21,002,777	3,325,341	363,944	101,644	2,698,524	-102,030	1,594,389	81,363	N/A	7,744
Net income.....	43,154,732	22,260,640	4,382,362	589,135	101,644	3,628,344	1,408,839	3,481,317	169,662	N/A	8,046
Deficit.....	19,929,187	1,257,863	1,057,022	225,191	--	929,821	1,510,869	1,886,928	88,298	N/A	302
<b>LLC</b>											
Number of businesses.....	312,016	60,836	8,071	16,487	2,373	19,728	14,466	27,866	20,445	N/A	707
Business receipts.....	30,758,650	56,950,933	4,041,868	22,843,115	1,456,796	28,044,845	12,370,370	37,267,004	6,954,445	N/A	222,255
Net income (less deficit).....	9,108,373	4,095,275	2,558,902	960,809	-15,442	2,411,338	-1,340,784	-1,026,453	110,878	N/A	-12,040
Net income.....	23,413,824	8,813,617	4,809,842	1,840,135	104,764	4,127,225	829,666	2,265,348	632,713	N/A	8,532
Deficit.....	14,305,450	4,718,341	2,250,940	879,327	120,206	1,715,888	2,170,450	3,291,801	521,835	N/A	20,572
<b>Nonfarm Sole Proprietorships</b>											
Number of businesses.....	935,076	2,444,845	N/A	1,549,153	352,295	1,595,395	1,075,614	322,460	1,725,721	226,867	250,384
Business receipts.....	48,727,512	114,255,129	N/A	40,216,345	4,804,001	86,976,383	20,568,744	37,345,294	65,520,118	2,933,690	3,098,660
Net income (less deficit).....	20,542,795	48,116,862	N/A	11,575,802	1,746,044	36,875,624	5,375,362	2,245,602	14,192,461	1,498,270	1,283,295
Net income.....	22,172,407	51,696,066	N/A	12,920,343	1,957,148	38,233,690	7,893,331	3,497,576	16,035,618	1,679,507	1,609,430
Deficit.....	1,629,612	3,579,203	N/A	1,344,541	211,104	1,358,066	2,517,969	1,251,974	1,843,157	181,237	326,135

N/A - not applicable.

<sup>1</sup> Total Corporation "Net income (less deficit)" includes "Total net income (less deficit)" from S Corporations and is more comprehensive than what SOI generally publishes.

<sup>2</sup> For this table, the computations for C Corporations also include 1120-RIC and 1120-REIT returns.

<sup>3</sup> For Tax Year 2000 General Partnerships include partnerships listed on the tax return as General, Foreign, Other and blank.

<sup>4</sup> For Tax Year 2000 Limited Partnerships include Domestic Limited Partnerships and Domestic Limited Liability Partnerships.

NOTE: Detail may not add to total because of rounding.

**Table 3D.--Number of Businesses, Business Receipts, Net Income, and Deficit, by Form of Business and Industry, Tax Year 2001**

[All figures are estimates based on samples--money amounts are in thousands of dollars]

Form of business, item	All industries	Agriculture, forestry, fishing, and hunting	Mining	Utilities	Construction	Manufacturing	Wholesale and retail trade	Transportation and warehousing	Information	Finance and insurance
	(1)	(2)	(3)	(4)	(5)	(6)	(7)	(8)	(9)	(10)
<b>All Businesses</b>										
Number of businesses.....	25,605,898	528,224	173,580	19,566	3,124,732	662,521	3,674,362	1,129,498	426,500	1,059,181
Business receipts.....	20,799,323,834	137,726,166	218,469,712	1,143,709,184	1,405,785,332	5,348,916,414	5,897,663,230	593,002,438	982,177,427	1,684,991,171
Net income (less deficit).....	1,142,478,028	3,674,270	24,844,876	21,425,917	74,462,287	160,456,099	103,595,361	3,563,871	-44,851,759	386,021,771
Net income.....	1,851,745,213	14,046,103	39,158,379	36,088,138	95,238,192	313,684,796	171,974,002	29,819,784	83,596,193	468,340,204
Deficit.....	709,267,183	10,371,833	14,313,506	14,662,222	20,775,905	153,228,696	68,378,639	26,255,912	128,447,950	82,318,433
<b>Corporations</b>										
Number of businesses.....	5,135,591	140,806	31,776	7,802	624,478	278,995	963,403	164,492	115,435	220,895
Business receipts.....	17,504,288,630	102,909,416	151,151,906	1,004,358,112	1,084,579,920	4,862,174,424	5,183,197,415	493,765,699	815,772,817	1,430,898,834
Net income (less deficit) ( * ).....	648,758,088	1,672,678	10,279,423	16,965,071	35,393,571	134,837,427	84,526,491	-6,441,292	-35,586,988	272,519,760
Net income.....	1,155,497,719	6,429,255	17,023,541	28,877,598	48,628,978	274,142,214	136,822,456	14,678,456	61,329,395	332,135,408
Deficit.....	506,739,630	4,756,577	6,744,121	11,912,527	13,235,392	139,304,786	52,295,963	21,119,748	96,916,381	59,615,647
<b>C Corporations ( † )</b>										
Number of businesses.....	2,149,105	66,284	13,908	5,941	238,116	139,508	440,523	73,304	52,769	99,141
Business receipts.....	13,813,168,479	56,153,283	130,106,865	999,589,343	535,734,095	4,359,364,517	3,647,616,000	399,221,076	765,512,006	1,363,009,858
Net income (less deficit).....	461,071,171	1,221,679	5,628,672	16,585,894	9,018,523	110,021,373	43,425,834	-8,021,537	-36,958,491	260,174,240
Net income.....	906,633,873	3,080,882	11,766,438	28,371,482	16,948,122	241,206,592	85,924,640	10,290,662	54,766,601	316,581,583
Deficit.....	445,562,701	1,859,203	6,137,768	11,785,588	7,929,598	131,185,218	42,498,806	18,312,199	91,725,091	56,407,343
<b>S Corporations</b>										
Number of businesses.....	2,986,486	74,522	17,868	1,861	386,362	139,487	522,880	91,188	62,666	121,754
Business receipts.....	3,691,120,151	46,756,133	21,045,041	4,768,769	548,845,825	502,809,907	1,535,581,415	94,544,623	50,260,811	67,888,976
Total net income (less deficit).....	187,686,917	450,999	4,650,751	379,177	26,375,055	24,816,054	41,100,657	1,580,245	1,371,503	12,345,520
Net income.....	248,863,846	3,348,373	5,257,103	506,116	31,680,849	32,935,822	50,897,816	4,387,794	6,562,794	15,553,825
Deficit.....	61,176,929	2,897,374	606,353	126,939	5,305,794	8,119,568	9,797,157	2,807,549	5,191,290	3,208,304
<b>Partnerships</b>										
Number of businesses.....	2,132,117	117,343	27,269	2,757	127,374	36,514	146,402	25,483	26,091	261,682
Business receipts.....	2,278,200,526	18,573,227	60,502,000	139,090,586	156,967,238	462,062,912	490,913,434	46,548,552	158,779,118	171,469,593
Net income (less deficit).....	276,334,824	678,466	13,958,241	4,390,151	10,538,118	22,184,926	5,478,305	1,914,673	-10,946,478	99,627,703
Net income.....	446,069,172	5,276,110	20,573,102	7,123,443	15,132,697	35,451,133	14,795,537	5,487,560	19,994,802	119,943,530
Deficit.....	169,734,347	4,597,644	6,614,861	2,733,293	4,594,579	13,266,207	9,317,232	3,572,887	30,941,280	20,315,827
<b>General ( ‡ )</b>										
Number of businesses.....	885,457	77,990	10,603	540	55,127	15,935	77,574	10,506	11,563	104,824
Business receipts.....	464,251,886	4,268,379	13,138,627	9,480,774	40,243,629	118,149,292	91,105,525	6,962,623	44,097,606	17,133,339
Net income (less deficit).....	101,830,079	1,761,759	2,912,285	1,276,453	3,618,801	8,855,695	2,287,250	1,223,053	2,102,636	30,644,767
Net income.....	128,591,551	3,197,829	6,431,979	1,748,849	4,592,540	10,282,879	3,358,011	1,873,241	6,528,094	34,437,101
Deficit.....	26,761,472	1,436,070	3,519,694	472,396	973,739	1,427,184	1,070,760	650,189	4,425,457	3,792,334
<b>Limited ( § )</b>										
Number of businesses.....	437,968	17,394	7,810	931	11,129	2,903	9,291	2,938	2,167	87,192
Business receipts.....	876,234,279	3,827,239	18,267,977	72,523,323	39,803,876	145,959,928	187,696,593	14,272,618	66,649,516	113,439,079
Net income (less deficit).....	127,448,902	-547,612	7,943,390	2,457,025	3,218,412	7,091,113	3,395,725	1,938,867	-5,262,980	44,697,072
Net income.....	187,146,566	674,613	9,236,149	3,930,377	4,374,005	11,892,494	4,867,844	2,590,253	8,199,391	49,805,651
Deficit.....	59,697,664	1,222,225	1,292,759	1,473,352	1,155,593	4,801,380	1,472,119	651,386	13,462,370	5,108,579
<b>LLC</b>										
Number of businesses.....	808,692	21,959	8,856	1,287	61,117	17,677	59,537	12,038	12,361	69,665
Business receipts.....	937,714,361	10,477,609	29,095,395	57,086,489	76,919,733	197,953,692	212,111,316	25,313,311	48,031,996	40,897,175
Net income (less deficit).....	47,055,843	-535,682	3,102,566	656,672	3,700,905	6,238,117	-204,671	-1,247,247	-7,786,135	24,285,864
Net income.....	130,331,055	1,403,668	4,904,974	1,444,217	6,166,151	13,275,760	6,569,682	1,024,066	5,267,317	35,700,778
Deficit.....	83,275,212	1,939,350	1,802,408	787,545	2,465,247	7,037,643	6,774,353	2,271,313	13,053,452	11,414,914
<b>Nonfarm Sole Proprietorships</b>										
Number of businesses.....	18,338,190	270,075	114,535	9,007	2,372,880	347,012	2,564,557	939,523	284,974	576,604
Business receipts.....	1,016,834,678	16,243,523	6,815,806	260,486	164,238,174	24,679,078	223,552,381	52,688,187	7,625,492	82,622,744
Net income (less deficit).....	217,385,116	1,323,126	607,212	70,695	28,530,591	3,433,746	13,590,565	8,090,490	1,681,707	13,874,308
Net income.....	250,178,322	2,340,738	1,561,736	87,097	31,476,524	4,091,449	20,356,009	9,653,768	2,271,996	16,261,266
Deficit.....	32,793,206	1,017,612	954,524	16,402	2,945,934	657,703	6,765,444	1,563,277	590,289	2,386,959

Footnotes at end of table.



**Table 3D.--Number of Businesses, Business Receipts, Net Income, and Deficit, by Form of Business and Industry, Tax Year 2001--Continued**

[All figures are estimates based on samples--money amounts are in thousands of dollars]

Form of business, item	Real estate and rental and leasing	Professional, scientific, and technical services	Management of companies (holding companies)	Administrative and support and waste management services	Educational services	Health care and social assistance	Arts, entertainment, and recreation	Accommodation, food services, and drinking places	Other services	Religious, grantmaking, civic, professional, and similar	Unclassified industries
	(11)	(12)	(13)	(14)	(15)	(16)	(17)	(18)	(19)	(20)	(21)
<b>All Businesses</b>											
Number of businesses.....	2,456,254	3,445,157	63,211	1,829,793	422,180	2,051,024	1,174,566	691,094	2,237,355	231,591	205,507
Business receipts.....	325,077,096	965,106,321	182,587,302	421,976,061	31,760,887	608,972,873	133,977,372	456,267,719	255,091,915	2,837,353	3,227,862
Net income (less deficit).....	93,243,970	97,673,057	91,333,150	22,302,092	2,325,169	63,600,568	4,380,651	11,682,493	20,182,517	1,473,603	1,088,067
Net income.....	153,082,125	155,617,014	105,838,162	32,032,024	4,023,737	75,985,681	17,359,662	26,257,997	26,597,037	1,718,877	1,287,104
Deficit.....	59,838,158	57,943,958	14,505,011	9,729,931	1,698,571	12,385,113	12,979,008	14,575,506	6,414,520	245,275	199,039
<b>Corporations</b>											
Number of businesses.....	539,965	709,837	47,866	223,999	38,480	327,338	102,631	259,465	325,602	N/A	12,325
Business receipts.....	207,454,856	631,691,343	175,450,783	339,002,912	25,148,309	429,190,484	69,089,923	328,552,525	168,989,458	N/A	909,495
Net income (less deficit)( <sup>1</sup> ).....	13,816,572	-1,095,827	85,179,993	8,299,302	472,261	12,584,750	938,959	9,954,901	4,484,029	N/A	-43,000
Net income.....	28,291,489	45,485,912	93,187,021	15,431,400	1,676,488	20,580,467	5,686,721	17,006,538	8,088,334	N/A	26,055
Deficit.....	14,474,918	46,581,740	8,007,027	7,132,097	1,204,229	7,995,717	4,717,760	7,051,638	3,604,305	N/A	69,057
<b>C Corporations (<sup>2</sup>)</b>											
Number of businesses.....	208,012	260,025	26,419	72,341	14,407	157,124	35,406	92,568	144,389	N/A	8,916
Business receipts.....	138,430,430	394,400,768	170,384,509	209,587,067	14,424,654	308,545,859	35,905,198	203,384,005	81,561,619	N/A	237,329
Net income (less deficit).....	1,139,392	-26,513,768	79,034,349	1,582,025	-203,819	452,528	-857,275	4,829,631	564,473	N/A	-52,552
Net income.....	10,248,856	15,170,503	84,389,567	7,018,266	751,968	6,990,796	1,676,821	8,789,384	2,645,990	N/A	14,720
Deficit.....	9,109,465	41,684,271	5,355,217	5,436,240	955,789	6,538,268	2,534,094	3,959,754	2,081,517	N/A	67,272
<b>S Corporations</b>											
Number of businesses.....	331,953	449,812	21,447	151,658	24,073	170,214	67,225	166,897	181,213	N/A	3,409
Business receipts.....	69,024,426	237,290,575	5,066,274	129,415,845	10,723,655	120,644,625	33,184,725	125,168,520	87,427,839	N/A	*672,166
Total net income (less deficit).....	12,677,180	25,417,941	6,145,644	6,717,277	676,080	12,132,222	1,796,234	5,125,270	3,919,556	N/A	9,552
Net income.....	18,042,633	30,315,409	8,797,454	8,413,134	924,520	13,589,671	3,979,900	8,217,154	5,442,344	N/A	*11,335
Deficit.....	5,365,453	4,897,469	2,651,810	1,695,857	248,440	1,457,449	2,183,666	3,091,884	1,522,788	N/A	*1,785
<b>Partnerships</b>											
Number of businesses.....	948,200	143,045	15,345	38,516	5,240	44,689	34,594	70,171	58,454	N/A	2,948
Business receipts.....	68,470,179	214,642,623	7,136,519	43,650,320	1,763,853	86,253,831	43,679,315	90,282,581	17,267,790	N/A	146,854
Net income (less deficit).....	59,019,298	49,938,292	6,153,157	2,687,888	113,020	11,321,467	-1,906,125	258,538	901,189	N/A	23,996
Net income.....	102,358,616	57,199,172	12,651,141	3,842,198	286,122	14,439,819	3,763,575	5,977,669	1,727,430	N/A	*45,516
Deficit.....	43,339,319	7,260,881	6,497,984	1,154,310	173,102	3,118,352	5,669,699	5,719,131	826,241	N/A	21,520
<b>General (<sup>3</sup>)</b>											
Number of businesses.....	349,791	55,333	1,873	14,507	3,093	15,180	15,136	28,867	35,960	N/A	1,057
Business receipts.....	10,515,703	50,109,862	366,440	5,434,223	118,631	16,563,029	15,558,638	15,588,953	5,389,907	N/A	26,706
Net income (less deficit).....	21,108,782	18,677,683	243,766	452,376	36,807	4,284,728	1,037,447	672,090	652,315	N/A	-17,615
Net income.....	25,674,465	19,675,697	1,876,643	619,709	47,723	4,443,501	1,712,566	1,295,820	794,902	N/A	--
Deficit.....	4,565,683	998,014	1,632,878	167,333	10,916	158,774	675,119	623,730	143,587	N/A	17,615
<b>Limited (<sup>4</sup>)</b>											
Number of businesses.....	242,641	16,313	6,059	3,815	265	7,595	4,380	9,710	4,552	N/A	880
Business receipts.....	22,428,847	97,702,096	1,870,339	10,857,367	437,989	32,767,467	12,506,439	32,746,417	2,456,353	N/A	20,815
Net income (less deficit).....	26,599,055	26,578,068	4,033,049	1,044,300	113,397	3,814,195	-709,654	832,826	169,473	N/A	43,180
Net income.....	48,261,080	27,599,589	5,607,019	1,316,813	131,470	4,786,165	1,068,293	2,519,938	239,915	N/A	*45,508
Deficit.....	21,662,025	1,021,521	1,573,970	272,513	18,073	971,970	1,777,947	1,687,113	70,442	N/A	2,327
<b>LLC</b>											
Number of businesses.....	355,768	71,399	7,413	20,195	1,882	21,914	15,078	31,594	17,942	N/A	1,011
Business receipts.....	35,525,630	66,830,666	4,899,740	27,358,730	1,207,233	36,923,335	15,614,238	41,947,211	9,421,530	N/A	99,333
Net income (less deficit).....	11,311,461	4,682,540	1,876,343	1,191,212	-37,184	3,222,544	-2,233,917	-1,246,377	80,401	N/A	-1,569
Net income.....	28,423,072	9,923,886	5,167,479	1,905,676	106,929	5,210,152	982,716	2,161,910	692,613	N/A	*8
Deficit.....	17,111,610	5,241,345	3,291,136	714,464	144,113	1,987,608	3,216,633	3,408,288	612,213	N/A	1,577
<b>Nonfarm Sole Proprietorships</b>											
Number of businesses.....	968,089	2,592,275	N/A	1,567,278	378,460	1,678,997	1,037,341	361,458	1,853,299	231,591	190,234
Business receipts.....	49,152,061	118,772,355	N/A	39,322,829	4,848,725	93,528,558	21,208,134	37,432,613	68,834,667	2,837,353	2,171,513
Net income (less deficit).....	20,408,100	48,830,592	N/A	11,314,902	1,739,888	39,694,351	5,347,817	1,469,054	14,797,299	1,473,603	1,107,071
Net income.....	22,432,020	52,931,930	N/A	12,758,426	2,061,127	40,965,395	7,939,366	3,273,790	16,781,273	1,718,877	1,215,533
Deficit.....	2,023,921	4,101,337	N/A	1,443,524	321,240	1,271,044	2,591,549	1,804,737	1,983,974	245,275	108,462

N/A - not applicable.

<sup>1</sup> Estimate should be used with caution because of the small number of sample returns on which it is based.

<sup>2</sup> Total Corporation "Net income (less deficit)" includes "Total net income (less deficit)" from S Corporations and is more comprehensive than what SOI generally publishes.

<sup>3</sup> For this table, the computations for C Corporations also include 1120-RIC and 1120-REIT returns.

<sup>4</sup> For Tax Year 2001 General Partnerships include partnerships listed on the tax return as General, Foreign, Other and blank.

<sup>5</sup> For Tax Year 2001 Limited Partnerships include Domestic Limited Partnerships and Domestic Limited Liability Partnerships.

NOTE: Detail may not add to total because of rounding.

**Table 3E.--Number of Businesses, Business Receipts, Net Income, and Deficit, by Form of Business and Industry, Tax Year 2002**

[All figures are estimates based on samples--money amounts are in thousands of dollars]

Form of business, item	All industries	Agriculture, forestry, fishing, and hunting	Mining	Utilities	Construction	Manufacturing	Wholesale and retail trade	Transportation and warehousing	Information	Finance and insurance
	(1)	(2)	(3)	(4)	(5)	(6)	(7)	(10)	(11)	(12)
<b>All Businesses</b>										
Number of businesses.....	26,434,293	562,647	169,687	17,283	3,060,857	628,868	3,753,503	1,153,198	372,249	1,134,714
Business receipts.....	20,741,003,999	141,220,484	203,416,985	684,621,006	1,418,625,997	5,331,158,546	6,031,582,090	617,883,492	973,137,236	1,825,601,822
Net income (less deficit).....	1,088,304,476	-203,658	14,324,289	48,277	69,152,166	148,924,229	112,870,246	2,520,763	-37,650,355	354,829,875
Net income.....	1,781,234,414	11,936,961	29,153,524	28,232,018	94,333,280	289,209,459	175,744,485	30,743,808	70,695,627	433,584,763
Deficit.....	692,929,935	12,140,619	14,829,237	28,183,742	25,181,113	140,285,228	62,874,239	28,223,045	108,345,980	78,754,887
<b>Corporations</b>										
Number of businesses.....	5,266,607	140,223	30,287	7,863	648,535	280,185	964,523	177,745	120,271	224,352
Business receipts.....	17,297,125,146	107,931,393	142,247,484	537,883,736	1,080,555,117	4,822,650,951	5,278,843,887	510,816,998	799,441,224	1,573,271,535
Net income (less deficit)( *).....	596,524,021	181,253	1,828,515	-996,254	30,333,662	122,875,109	92,047,142	-8,071,329	-32,346,204	249,912,504
Net income.....	1,084,179,818	5,375,689	10,246,727	22,610,162	47,104,662	248,294,674	139,521,185	14,939,554	49,906,622	306,820,086
Deficit.....	487,655,795	5,194,437	8,418,213	23,606,417	16,770,999	125,419,563	47,474,044	23,010,883	82,252,824	56,907,581
<b>C Corporations (*)</b>										
Number of businesses.....	2,112,229	62,926	13,689	6,148	229,765	136,154	421,528	79,150	53,442	101,495
Business receipts.....	13,455,844,038	55,913,447	123,353,269	534,775,345	508,439,348	4,310,253,648	3,683,137,171	404,314,605	747,803,342	1,499,651,364
Net income (less deficit).....	413,045,088	-49,355	-694,500	-1,191,723	5,274,233	97,594,117	53,553,028	-10,159,325	-33,801,955	235,885,468
Net income.....	837,646,191	2,174,754	7,032,252	22,301,428	15,510,859	215,419,073	89,774,067	10,257,243	43,415,794	290,625,026
Deficit.....	424,601,101	2,224,109	7,726,753	23,493,152	10,236,625	117,824,954	36,221,039	20,416,569	77,217,748	54,739,558
<b>S Corporations</b>										
Number of businesses.....	3,154,377	77,297	16,598	1,715	418,770	144,031	542,150	98,595	66,829	122,857
Business receipts.....	3,841,281,106	52,017,946	18,894,215	3,108,391	572,115,769	512,397,303	1,595,706,716	106,502,393	51,637,882	73,620,171
Total net income (less deficit).....	183,478,933	230,608	2,523,015	195,469	25,059,429	25,280,992	38,494,114	2,087,996	1,455,751	14,027,036
Net income.....	246,533,627	3,200,935	3,214,475	308,734	31,593,803	32,875,601	49,747,118	4,682,311	6,490,828	16,195,060
Deficit.....	63,054,694	2,970,328	691,460	113,265	6,534,374	7,594,609	11,253,005	2,594,314	5,035,076	2,168,023
<b>Partnerships</b>										
Number of businesses.....	2,242,169	117,667	29,549	2,507	134,114	38,364	159,813	26,007	28,580	263,024
Business receipts.....	2,414,187,093	18,493,176	54,836,750	146,591,432	169,589,554	485,032,481	537,823,272	52,184,396	167,226,832	175,974,554
Net income (less deficit).....	270,667,169	-1,120,675	11,994,183	1,059,594	10,726,523	23,367,624	8,680,372	2,936,996	-6,541,677	89,250,979
Net income.....	439,761,741	4,541,707	17,592,960	5,596,380	15,771,154	37,340,960	16,237,421	6,209,734	19,058,239	108,763,922
Deficit.....	169,094,572	5,662,382	5,598,778	4,536,786	5,044,631	13,973,337	7,557,049	3,272,738	25,599,916	19,512,943
<b>General (*)</b>										
Number of businesses.....	841,299	74,586	10,152	304	49,924	13,524	74,751	7,786	9,363	100,760
Business receipts.....	467,422,866	4,111,608	15,806,315	7,866,688	40,873,429	121,586,703	78,246,760	6,872,176	44,541,936	19,476,261
Net income (less deficit).....	100,914,057	326,094	2,363,373	799,754	3,375,292	7,399,312	2,441,551	1,348,451	2,776,913	30,381,653
Net income.....	125,748,798	2,481,044	5,511,800	1,341,755	4,238,104	8,947,265	3,420,744	1,933,698	5,949,747	33,270,302
Deficit.....	24,834,741	2,154,950	3,148,427	542,001	862,812	1,547,954	979,193	585,247	3,172,835	2,888,649
<b>Limited (*)</b>										
Number of businesses.....	454,741	17,512	8,518	967	13,317	4,313	12,452	2,855	2,883	87,169
Business receipts.....	931,055,315	3,426,772	16,373,002	68,858,403	40,037,930	152,191,353	232,630,290	19,499,553	71,639,619	106,282,223
Net income (less deficit).....	121,126,936	-629,960	6,717,840	-220,262	2,605,478	9,847,500	3,814,619	2,406,473	-112,165	35,320,086
Net income.....	178,135,683	549,170	7,643,989	2,487,910	3,939,865	14,210,050	5,449,308	2,998,487	9,272,006	41,900,615
Deficit.....	57,008,747	1,179,129	926,149	2,708,172	1,334,388	4,362,550	1,634,689	592,014	9,384,171	6,580,529
<b>LLC</b>										
Number of businesses.....	946,130	25,569	10,879	1,236	70,873	20,528	72,610	15,366	16,335	75,095
Business receipts.....	1,015,708,912	10,954,796	22,657,433	69,866,341	88,678,195	211,254,425	226,946,222	25,812,666	51,045,277	50,216,070
Net income (less deficit).....	48,626,175	-816,809	2,912,970	480,102	4,745,754	6,120,812	2,424,202	-817,928	-9,206,425	23,549,240
Net income.....	135,877,260	1,511,493	4,437,171	1,766,715	7,593,185	14,183,645	7,367,370	1,277,548	3,836,485	33,593,005
Deficit.....	87,251,084	2,328,303	1,524,201	1,286,613	2,847,431	8,062,833	4,943,168	2,095,477	13,042,910	10,043,765
<b>Nonfarm Sole Proprietorships</b>										
Number of businesses.....	18,925,517	304,757	109,851	6,913	2,278,208	310,319	2,629,167	949,446	223,398	647,338
Business receipts.....	1,029,691,760	14,795,915	6,332,751	145,838	168,481,326	23,475,114	214,914,931	54,882,098	6,469,180	76,355,733
Net income (less deficit).....	221,113,286	735,764	501,591	-15,063	28,091,981	2,681,496	12,142,732	7,655,096	1,237,526	15,666,392
Net income.....	257,292,855	2,019,565	1,313,837	25,476	31,457,464	3,573,825	19,985,879	9,594,520	1,730,766	18,000,755
Deficit.....	36,179,568	1,283,800	812,246	40,539	3,365,483	892,328	7,843,146	1,939,424	493,240	2,334,363

Footnotes at end of table.

**Table 3E.--Number of Businesses, Business Receipts, Net Income, and Deficit, by Form of Business and Industry, Tax Year 2002--Continued**

[All figures are estimates based on samples--money amounts are in thousands of dollars]

Form of business, item	Real estate and rental and leasing	Professional, scientific, and technical services	Management of companies (holding companies)	Administrative and support and waste management services	Educational services	Health care and social assistance	Arts, entertainment, and recreation	Accommodation, food services, and drinking places	Other services	Religious, grantmaking, civic, professional, and similar	Unclassified industries
	(11)	(12)	(13)	(14)	(15)	(16)	(17)	(18)	(19)	(20)	(21)
<b>All Businesses</b>											
Number of businesses.....	2,585,913	3,553,985	66,826	2,030,303	443,425	2,104,237	1,259,014	711,374	2,347,198	256,606	222,407
Business receipts.....	326,365,476	994,707,323	181,076,985	434,450,537	31,962,231	647,296,654	142,366,794	502,106,590	246,454,926	3,008,913	3,959,910
Net income (less deficit).....	88,486,346	108,603,239	93,713,668	21,559,264	2,497,018	71,897,581	5,026,449	8,914,092	19,504,855	1,767,093	1,519,038
Net income.....	154,030,315	159,757,591	109,455,165	33,137,274	4,453,305	83,381,275	18,266,440	24,841,983	26,595,564	1,964,550	1,717,027
Deficit.....	65,543,969	51,154,352	15,741,496	11,578,010	1,956,286	11,483,693	13,239,991	15,927,891	7,090,710	197,457	197,991
<b>Corporations</b>											
Number of businesses.....	570,639	736,005	48,053	231,412	41,317	334,305	110,609	271,527	321,134	N/A	7,620
Business receipts.....	205,206,751	651,992,903	170,514,329	338,209,323	24,509,009	448,427,967	72,674,159	372,418,853	159,401,281	N/A	128,244
Net income (less deficit) (¹).....	10,916,823	5,529,606	86,974,150	5,569,376	1,074,846	17,201,986	1,287,165	8,690,367	3,530,796	N/A	-15,492
Net income.....	27,306,140	45,588,917	97,401,257	13,923,247	1,920,404	24,207,526	5,595,830	16,130,502	7,260,820	N/A	25,814
Deficit.....	16,389,317	40,059,312	10,427,107	8,353,871	845,557	7,005,539	4,308,665	7,440,134	3,730,024	N/A	41,308
<b>C Corporations (²)</b>											
Number of businesses.....	210,506	255,885	26,274	74,456	16,010	155,300	36,195	93,686	134,581	N/A	5,039
Business receipts.....	129,234,183	393,523,705	165,001,246	210,732,359	14,327,839	319,820,278	38,335,364	240,354,090	76,835,603	N/A	37,832
Net income (less deficit).....	-894,004	-19,657,410	80,499,994	-1,021,791	402,377	2,985,478	-441,061	4,628,666	140,666	N/A	-7,815
Net income.....	9,450,869	14,936,926	89,169,833	5,647,487	969,788	8,441,367	1,603,174	8,696,227	2,209,287	N/A	10,737
Deficit.....	10,344,872	34,594,337	8,669,839	6,669,278	567,411	5,455,888	2,044,235	4,067,560	2,068,822	N/A	18,552
<b>S Corporations</b>											
Number of businesses.....	360,133	480,120	21,779	156,956	25,307	179,005	74,414	177,841	186,553	N/A	2,581
Business receipts.....	75,972,568	258,469,198	5,513,083	127,476,964	10,181,170	128,607,689	34,338,795	132,064,763	82,565,678	N/A	90,412
Total net income (less deficit).....	11,810,827	25,187,016	6,474,156	6,591,167	672,469	14,216,508	1,728,226	4,061,701	3,390,130	N/A	-7,677
Net income.....	17,855,271	30,651,991	8,231,424	8,275,760	950,616	15,766,159	3,992,656	7,434,275	5,051,533	N/A	15,077
Deficit.....	6,044,445	5,464,975	1,757,268	1,684,593	278,146	1,549,651	2,264,430	3,372,574	1,661,402	N/A	22,756
<b>Partnerships</b>											
Number of businesses.....	999,786	145,612	18,773	44,405	6,269	47,468	42,691	77,698	57,121	N/A	2,724
Business receipts.....	67,802,229	217,768,361	10,562,656	51,362,821	2,430,063	101,791,775	46,693,674	92,954,528	14,793,210	N/A	275,329
Net income (less deficit).....	54,988,398	54,436,614	6,739,518	3,671,249	-398,521	13,429,774	-1,828,953	-1,385,726	533,605	N/A	127,291
Net income.....	102,101,478	61,011,977	12,053,908	5,008,766	369,900	16,601,502	4,209,000	5,532,794	1,598,305	N/A	161,634
Deficit.....	47,113,080	6,575,362	5,314,389	1,337,517	768,421	3,171,728	6,037,953	6,918,520	1,064,700	N/A	34,343
<b>General (³)</b>											
Number of businesses.....	330,998	51,653	3,166	18,402	1,706	14,200	17,740	27,750	32,421	N/A	2,114
Business receipts.....	8,961,887	58,420,546	1,215,411	5,515,365	245,495	18,304,199	15,373,595	14,984,086	4,799,322	N/A	221,085
Net income (less deficit).....	18,639,017	21,822,755	1,989,804	595,616	34,903	4,718,857	829,393	513,055	538,678	N/A	19,587
Net income.....	23,063,746	23,018,322	3,150,819	731,826	41,553	4,900,516	1,799,920	1,178,681	727,927	N/A	40,968
Deficit.....	4,424,728	1,195,567	1,161,016	136,210	6,650	181,659	970,527	665,686	189,250	N/A	21,381
<b>Limited (³)</b>											
Number of businesses.....	246,080	20,392	5,780	4,795	451	8,405	4,238	11,400	3,125	N/A	90
Business receipts.....	21,445,241	100,612,413	1,895,174	11,695,703	348,590	37,776,105	12,460,189	31,890,243	1,992,512	N/A	--
Net income (less deficit).....	25,647,581	27,214,119	2,600,821	1,148,316	-354,503	4,718,795	-281,642	503,639	60,922	N/A	119,281
Net income.....	46,905,081	28,159,530	3,848,931	1,279,723	107,709	5,582,047	1,201,222	2,238,646	241,963	N/A	119,430
Deficit.....	21,257,501	945,411	1,248,110	131,407	462,213	863,252	1,482,864	1,735,007	181,041	N/A	149
<b>LLC</b>											
Number of businesses.....	422,708	73,567	9,826	21,208	4,112	24,863	20,713	38,548	21,574	N/A	520
Business receipts.....	37,395,101	58,735,402	7,452,071	34,151,754	1,835,978	45,711,471	18,859,890	46,080,199	8,001,376	N/A	54,244
Net income (less deficit).....	10,701,800	5,399,740	2,148,894	1,927,317	-78,921	3,992,121	-2,376,704	-2,402,420	-65,994	N/A	-11,577
Net income.....	32,132,652	9,834,125	5,054,157	2,997,217	220,637	6,118,939	1,207,858	2,115,407	628,415	N/A	1,235
Deficit.....	21,430,851	4,434,385	2,905,263	1,069,900	299,558	2,126,817	3,584,562	4,517,827	694,409	N/A	12,812
<b>Nonfarm Sole Proprietorships</b>											
Number of businesses.....	1,015,488	2,672,368	N/A	1,754,486	395,839	1,722,464	1,105,714	362,149	1,968,943	256,606	212,063
Business receipts.....	53,356,496	124,946,059	N/A	44,878,393	5,023,159	97,076,912	22,998,961	36,733,209	72,260,435	3,008,913	3,556,337
Net income (less deficit).....	22,581,125	48,637,019	N/A	12,318,639	1,820,693	41,265,821	5,568,237	1,609,451	15,440,454	1,767,093	1,407,239
Net income.....	24,622,697	53,156,697	N/A	14,205,261	2,163,001	42,572,247	8,461,610	3,178,687	17,736,439	1,964,550	1,529,579
Deficit.....	2,041,572	4,519,678	N/A	1,886,622	342,308	1,306,426	2,893,373	1,569,237	2,295,986	197,457	122,340

N/A - not applicable.

¹ Total Corporation "Net income (less deficit)" includes "Total net income (less deficit)" from S Corporations and is more comprehensive than what SOI generally publishes.

² For this table, the computations for C Corporations also include 1120-RIC and 1120-REIT returns.

³ For Tax Year 2002 General Partnerships include partnerships listed on the tax return as General, Foreign, Other and blank.

³ For Tax Year 2002 Limited Partnerships include Domestic Limited Partnerships and Domestic Limited Liability Partnerships.

NOTE: Detail may not add to total because of rounding.