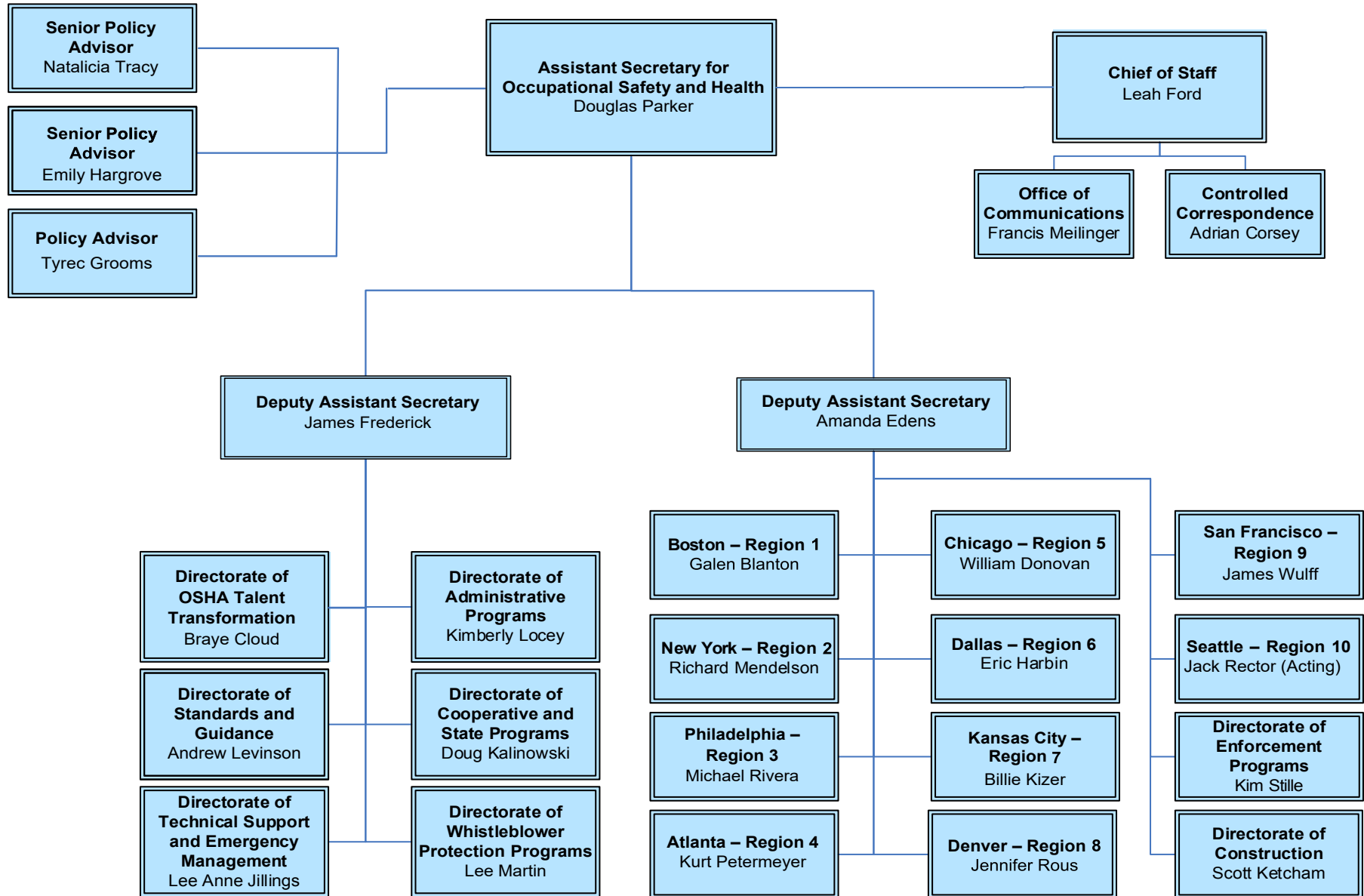


OSHA Organizational Chart



- Douglas Parker, Assistant Secretary for Occupational Safety and Health
 - Leah Ford, Chief of Staff
 - Francis Meilinger, Office of Communications
 - Adrian Corsey, Controlled Correspondence
 - Natalicia Tracy, Senior Policy Advisor
 - Emily Hargrove, Senior Policy Advisor
 - Tyrec Grooms, Policy Advisor
 - James Frederick, Deputy Assistant Secretary
 - Braye Cloud, Directorate of OSHA Talent Transformation
 - Andrew Levinson, Directorate of Standards and Guidance
 - Lee Anne Jillings, Directorate of Technical Support and Emergency Management
 - Kimberly Locey, Directorate of Administrative Programs
 - Doug Kalinowski, Directorate of Cooperative and State Programs
 - Lee Martin, Directorate of Whistleblower Protection Programs
 - Amanda Edens, Deputy Assistant Secretary
 - Galen Blanton, Boston – Region 1
 - Richard Mendelson, New York – Region 2
 - Michael Rivera, Philadelphia – Region 3
 - Kurt Petermeyer, Atlanta – Region 4
 - William Donovan, Chicago – Region 5
 - Eric Harbin, Dallas – Region 6
 - Billie Kizer, Kansas City – Region 7
 - Jennifer Rous, Denver – Region 8
 - James Wulff, San Francisco – Region 9
 - Jack Rector, Seattle – Region 10 (Acting)
 - Kim Stille, Directorate of Enforcement Programs
 - Scott Ketchum, Directorate of Construction