



For release 10:00 a.m. (ET) Thursday, May 26, 2022

USDL-22-0993

Technical information: (202) 691-5606 • productivity@bls.gov • www.bls.gov/productivity
Media contact: (202) 691-5902 • PressOffice@bls.gov

PRODUCTIVITY BY STATE – 2021

Labor productivity in the private nonfarm sector rose in 39 states and the District of Columbia in 2021, the U.S. Bureau of Labor Statistics reported today. Output increased in all 50 states and the District of Columbia in 2021, following a year of decline for all areas. Hours worked increased in all 50 states but declined in the District of Columbia. Washington and New Hampshire experienced the highest growth in labor productivity of 6.4 percent and 5.2 percent, respectively. (See chart 1 and table 1.)

Chart 1. Labor productivity by state, percent change, 2021

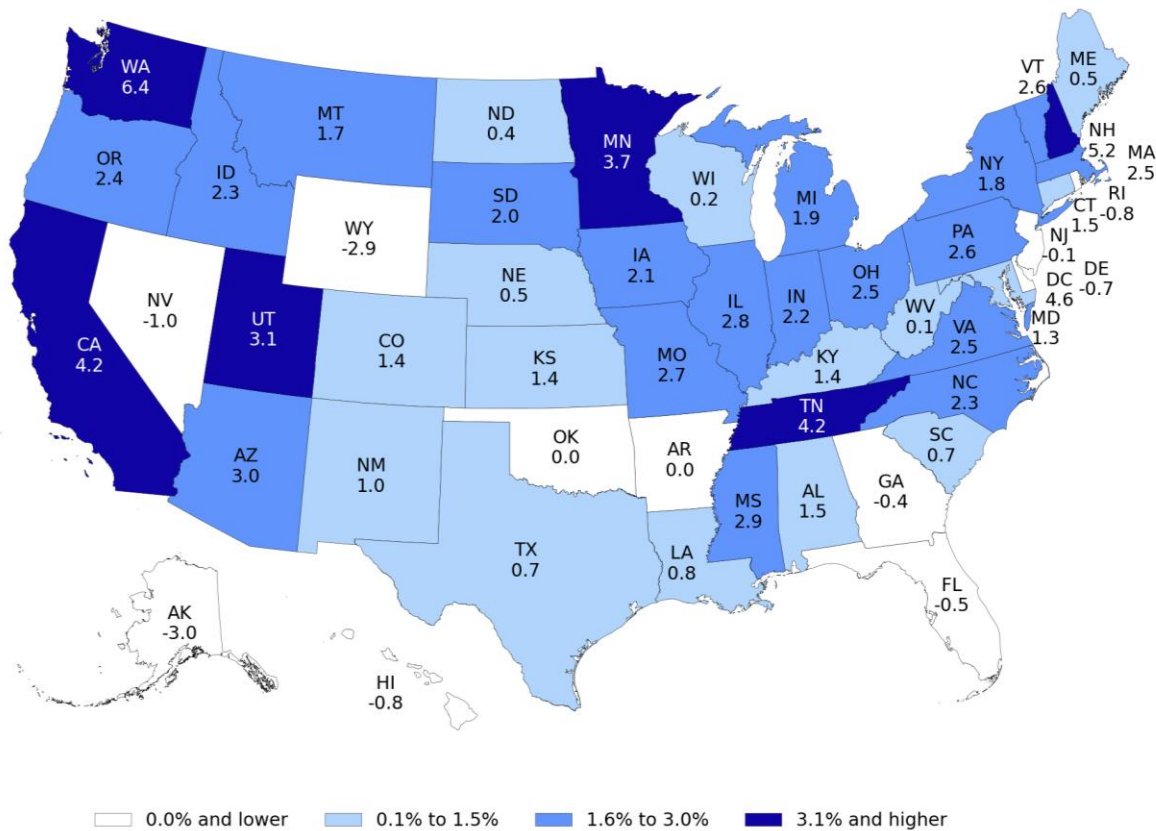
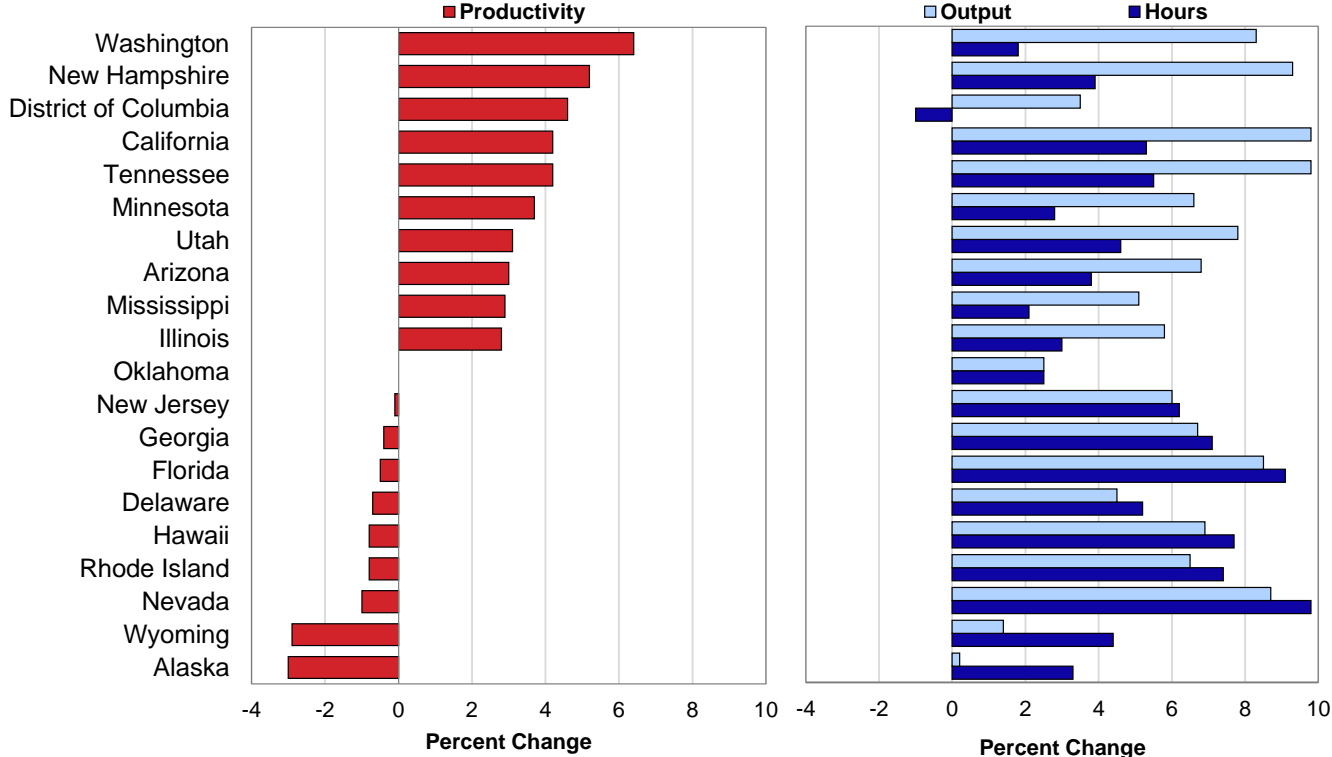


Chart 2 displays the states with the largest productivity gains and losses and their respective changes in output and hours worked in 2021.

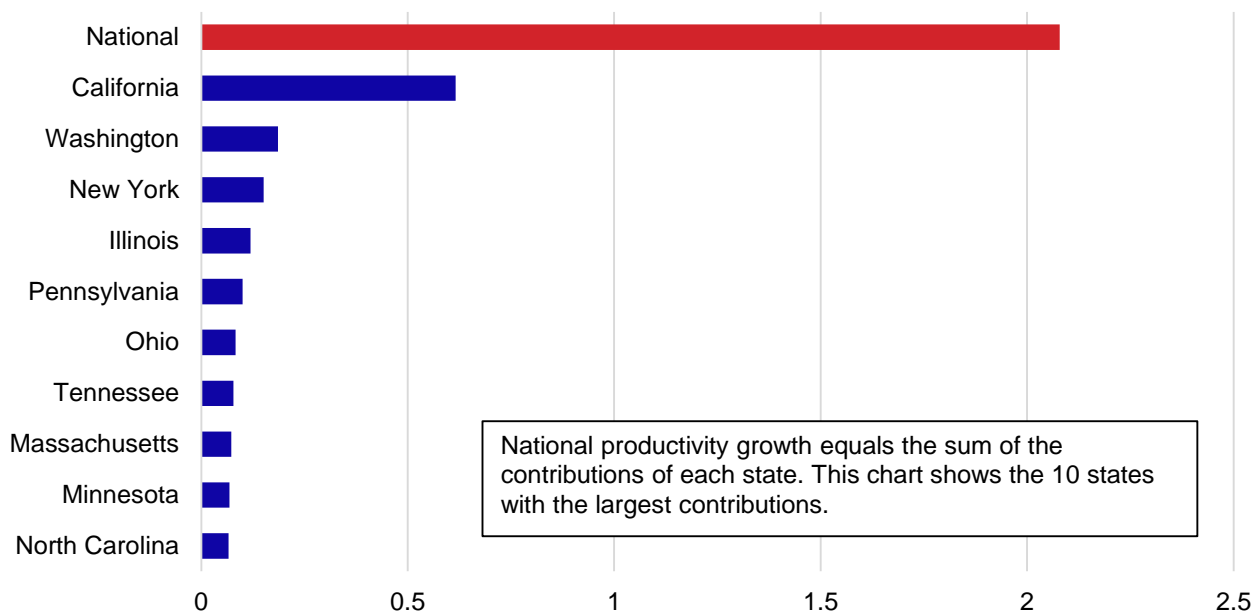
- Two states saw productivity growth over 5.0 percent: Washington (6.4 percent) and New Hampshire (5.2 percent).
- Output growth exceeded 9.0 percent in three states: California (9.8 percent), Tennessee (9.8 percent), and New Hampshire (9.3 percent).
- Nevada and Florida saw the highest growth in hours worked (9.8 percent and 9.1 percent, respectively).
- Two states, Arkansas and Oklahoma, saw no change to labor productivity due to gains in output that matched gains in hours worked.
- Labor productivity declined in nine states (Alaska, Wyoming, Nevada, Hawaii, Rhode Island, Delaware, Florida, Georgia, and New Jersey) due to a more rapid increase in hours worked than in output.

Chart 2. Labor productivity, output, and hours worked for select states, percent change, 2021



Each state’s annual contribution to national productivity growth is calculated by multiplying the state’s productivity growth rate by its average share of total current dollar national output. The economic size of each state influences its contribution to national and regional estimates. For 2021, California had the largest contribution to national growth. The state’s 4.2-percent growth in labor productivity in 2021 contributed nearly one third of the 2.1-percent growth of the nation. (See chart 3.)

Chart 3. Contributions to national labor productivity, 2021



2019-21 trends

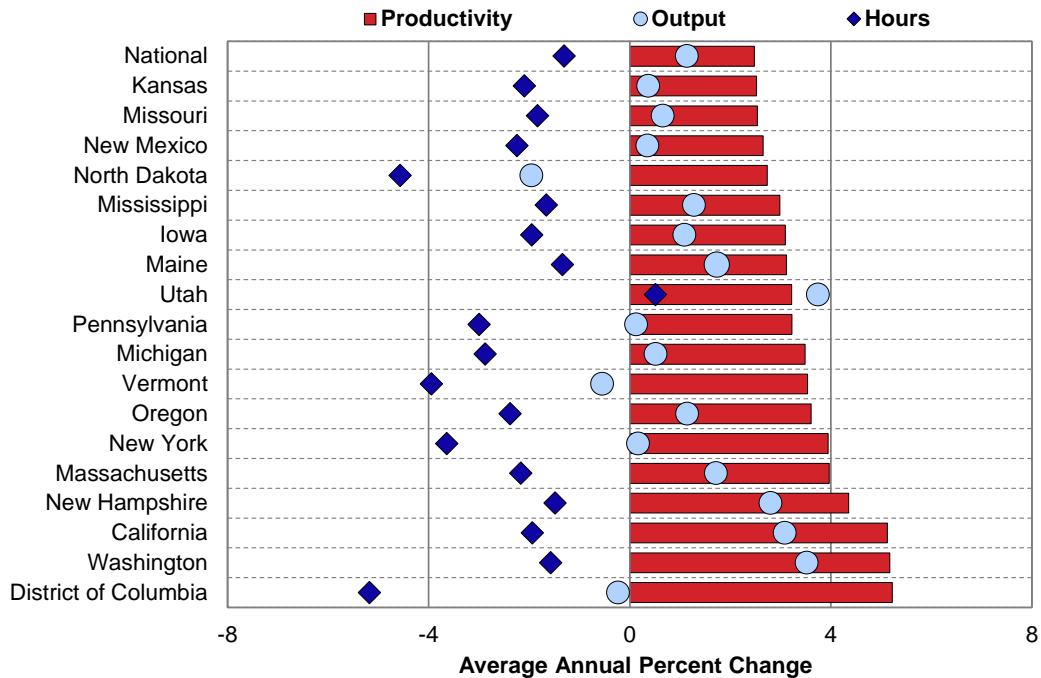
While increases in output and hours worked were widespread in 2021, not all areas have fully recovered to levels seen before the COVID-19 pandemic.

- Output surpassed 2019 levels in 37 states in 2021.
- Idaho and Utah share the highest average annual output growth rate (3.7 percent).
- Hours worked were still below 2019 levels in 40 states and the District of Columbia.
- Hawaii saw the largest decrease in hours worked (-5.8 percent); Idaho experienced the largest increase (3.7 percent).
- Labor productivity increased in all but two states – Oklahoma and Wyoming. (See table 3).

Seventeen states and the District of Columbia experienced average annual labor productivity growth faster than the national rate of 2.5 percent. Chart 4 shows the changes in labor productivity, output, and hours worked for these states.

- Of these 17 states, Utah was the only state that also experienced an increase in hours worked.
- The remaining 16 areas had declines in hours worked that outpaced that of the nation (-1.3 percent).
- Three areas – California, Washington, and the District of Columbia – saw productivity growth of more than 5.0 percent.
- North Dakota, Vermont, and the District of Columbia had declines in both output and hours worked.

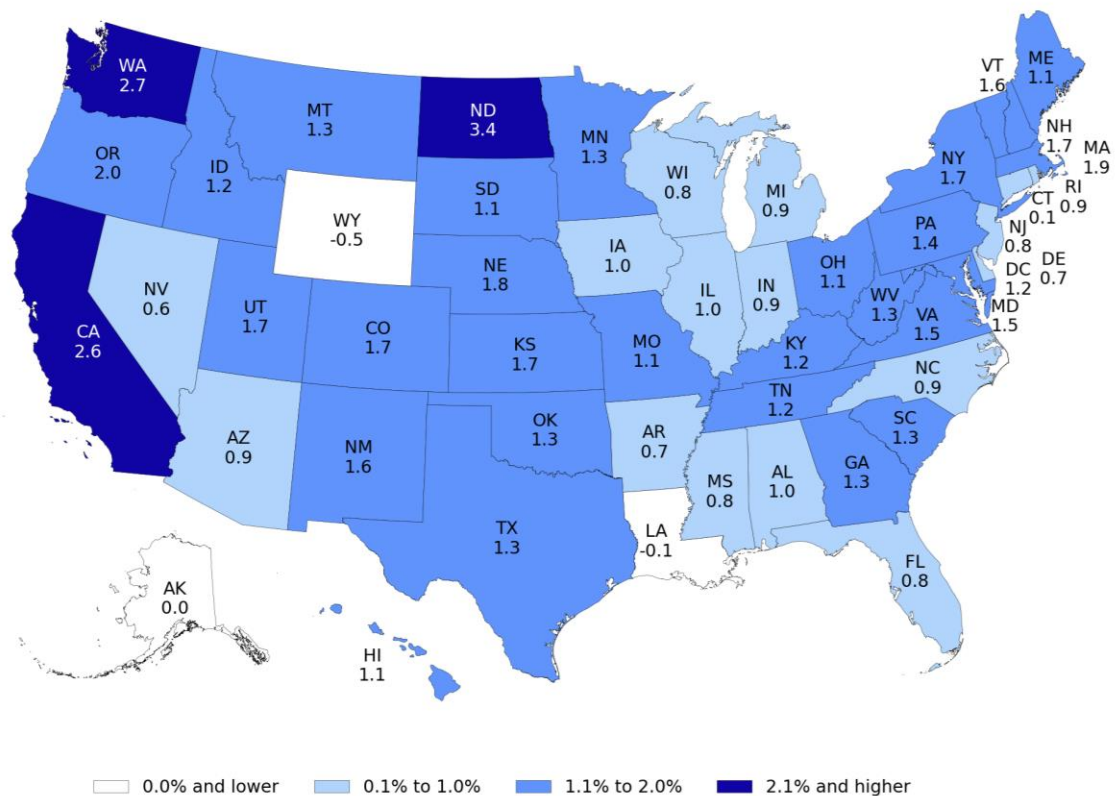
Chart 4. Labor productivity, output, and hours worked for select states, percent change, 2019-21



Long term trends

Chart 5 shows the average annual percent change in labor productivity for all 50 states and the District of Columbia for the period 2007-21. (See table 2.)

Chart 5. Labor productivity by state, average annual percent change, 2007-21



- From 2007 to 2021, labor productivity rose in 47 states and the District of Columbia.
- Output grew in 46 states and the District of Columbia while hours worked grew in 25 states and the District of Columbia.
- North Dakota experienced the highest rate of labor productivity growth of 3.4 percent. Louisiana and Wyoming posted slight declines over the long term and Alaska saw no growth.
- In 2020, every state saw declines in output and all but one state saw declines in hours worked, closely mirroring the recession years of 2007-09. Chart 6 shows that 2021 was a year of recovery with all areas experiencing growth in output and hours worked increased in all states.

Chart 6. Number of states with increases in labor productivity, output, and hours worked, 2007-21

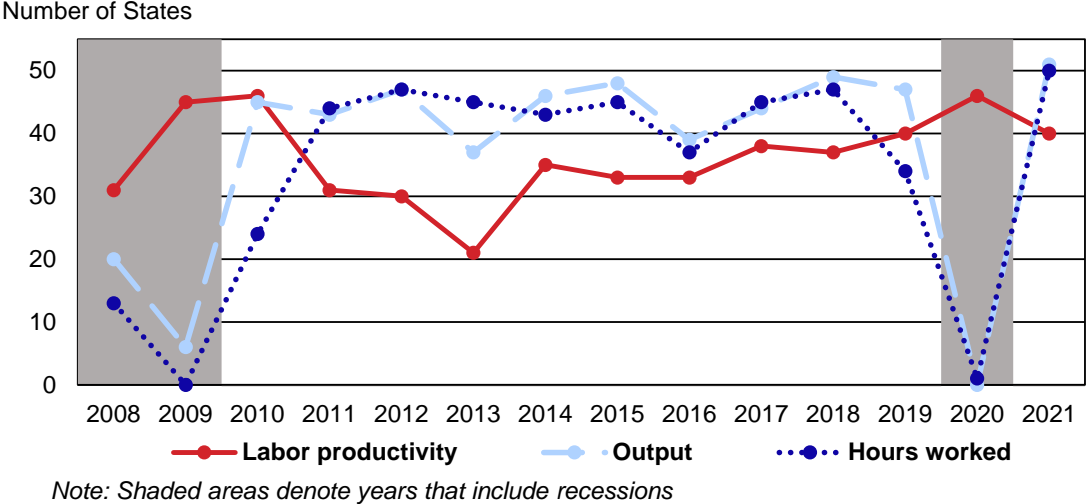
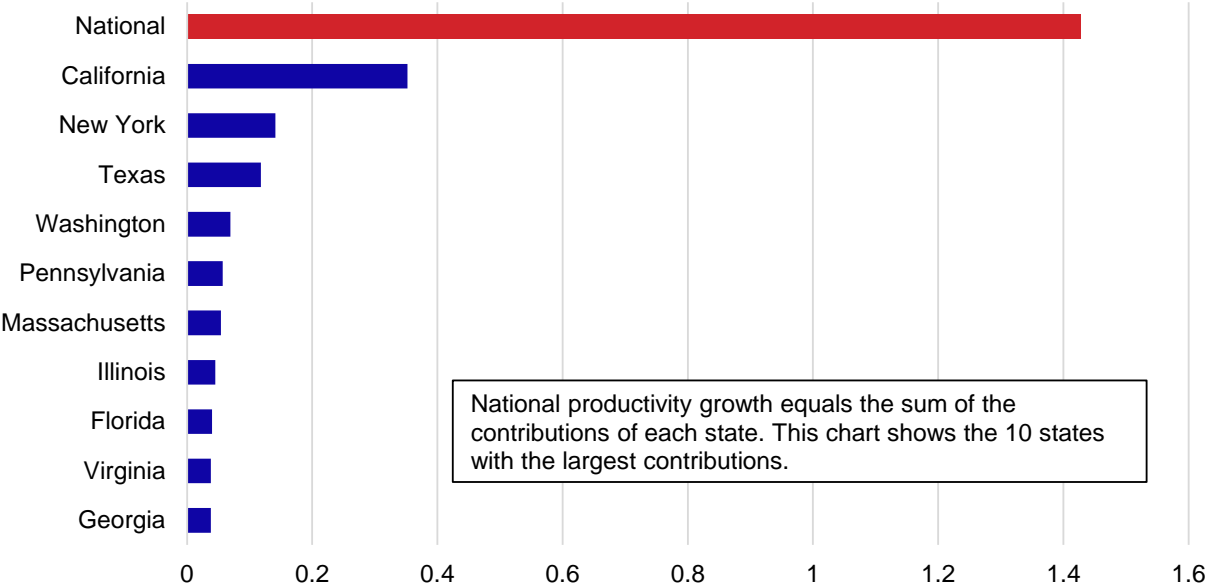


Chart 7 shows states with the highest contribution to the national average annual percent change in labor productivity from 2007 to 2021. California, New York, and Texas, which have the largest economies, contributed the most to national productivity growth, over 40 percent of the 1.4-percent increase. (See Table 4.)

Chart 7. Contributions to national labor productivity, average annual percent change, 2007-21



Additional Information

Output and compensation measures for 2020 and earlier years reflect revisions to GDP by state and industry data published by the Bureau of Economic Analysis. Hours and employment data through 2020 have been revised to incorporate the BLS 2021 Current Employment Statistics benchmark.

Access the following productivity data at www.bls.gov/productivity/tables/labor-productivity-by-state-and-region.xlsx:

- Detailed data series: indexes of productivity and related measures; rates of change; and levels of state employment, hours worked, value-added output, and labor compensation
- Additional years and long-term data

Subscribe to productivity news releases on the BLS website at <https://public.govdelivery.com/accounts/USDOLBLS/subscriber/new>.

If you are deaf, hard of hearing, or have a speech disability, please dial 7-1-1 to access telecommunications relay services.

Technical Note

Labor Productivity: Labor productivity describes the relationship between real output and the labor hours involved in its production. These measures show the changes from period to period in the amount of goods and services produced per hour worked. Although the labor productivity measures relate output in a state to hours worked of all persons in that state, they do not measure the specific contribution of labor to growth in output. Rather, they reflect the joint effects of many influences, including: changes in technology; capital investment; utilization of capacity, energy, and materials; the use of purchased services inputs, including contract employment services; the organization of production; the characteristics and effort of the workforce; and managerial skill.

Output: Measures of real value-added output for the private nonfarm sector are created using GDP by state and industry data published by the Bureau of Economic Analysis (BEA). BEA does not produce a private nonfarm sector measure of real output by state. To create the necessary output series, several industry components are subtracted — the farm sector, private households, and owner-occupied housing — from GDP by state using a Fisher ideal index formula.

Labor Hours: Hours are the number of hours worked by all employed persons, including wage and salary workers, self-employed persons, and unpaid family workers. Hours for wage and salary workers are primarily from BLS Current Employment Statistics (CES) and hours for self-employed and unpaid family workers are from the BLS Current Population Survey (CPS). The hours are adjusted from an hours paid basis to an hours worked basis using data from the BLS National Compensation Survey (NCS).

Unit Labor Costs: Unit labor costs represent the cost of labor required to produce one unit of output. The unit labor cost indexes are computed by dividing an index of nominal industry labor compensation by an index of real industry output. Unit labor costs also describe the relationship between compensation per hour worked (hourly compensation) and real output per hour worked (labor productivity). When hourly compensation growth outpaces productivity, unit labor costs increase. Alternatively, when productivity growth exceeds hourly compensation, unit labor costs decrease.

Labor Compensation: Labor compensation, defined as payroll plus supplemental payments, is a measure of the cost to the employer of securing the services of labor. Labor compensation measures are constructed using BEA nonfarm compensation less private household compensation. Compensation for self-employed and unpaid family workers are imputed by assuming that hourly compensation for these workers is the same as the average wage and salary worker in each state.

Contributions to Labor Productivity: Each state's contribution to national productivity growth is calculated by multiplying the state's productivity growth rate by its average share of total current dollar national output. Adding up these contributions will approximate, but may not exactly equal, growth rates of national productivity. Contributions measures used in this release capture the effects of within-state productivity changes but do not include the effects of shifting shares of output and labor among states.

Table 1. Recent labor productivity and related data, private nonfarm sector

Area Name	2021 Employment (thousands)	Percent change, 2020-21					
		Labor productivity	Output	Hours worked	Unit labor costs	Labor compensation	Hourly compensation
States							
Alabama.....	1,775.796	1.5	4.9	3.4	3.7	8.7	5.2
Alaska.....	262.635	-3.0	0.2	3.3	4.6	4.8	1.5
Arizona.....	2,790.263	3.0	6.8	3.8	2.7	9.7	5.7
Arkansas.....	1,158.640	0.0	5.7	5.7	5.0	11.1	5.1
California.....	15,875.602	4.2	9.8	5.3	5.2	15.5	9.7
Colorado.....	2,540.081	1.4	7.1	5.6	4.7	12.1	6.1
Connecticut.....	1,538.798	1.5	5.0	3.5	2.8	7.9	4.3
Delaware.....	404.929	-0.7	4.5	5.2	4.6	9.3	3.9
District of Columbia.....	518.028	4.6	3.5	-1.0	1.6	5.2	6.2
Florida.....	8,524.066	-0.5	8.5	9.1	7.5	16.7	7.0
Georgia.....	4,221.017	-0.4	6.7	7.1	5.8	12.9	5.4
Hawaii.....	511.816	-0.8	6.9	7.7	5.4	12.7	4.6
Idaho.....	747.266	2.3	8.8	6.4	4.9	14.1	7.3
Illinois.....	5,326.186	2.8	5.8	3.0	2.8	8.8	5.7
Indiana.....	2,873.899	2.2	8.1	5.8	3.3	11.6	5.5
Iowa.....	1,372.511	2.1	4.4	2.3	1.6	6.1	3.8
Kansas.....	1,202.725	1.4	3.2	1.8	3.1	6.4	4.5
Kentucky.....	1,709.814	1.4	5.6	4.2	4.0	9.9	5.5
Louisiana.....	1,698.722	0.8	2.9	2.2	5.5	8.6	6.3
Maine.....	588.965	0.5	6.3	5.8	4.6	11.2	5.1
Maryland.....	2,313.167	1.3	4.3	2.9	4.7	9.2	6.1
Massachusetts.....	3,288.895	2.5	7.7	5.0	2.3	10.1	4.8
Michigan.....	3,834.613	1.9	7.3	5.4	1.7	9.1	3.6
Minnesota.....	2,612.443	3.7	6.6	2.8	0.7	7.4	4.4
Mississippi.....	975.093	2.9	5.1	2.1	2.2	7.4	5.2
Missouri.....	2,588.684	2.7	5.2	2.4	2.6	7.8	5.3
Montana.....	452.731	1.7	8.1	6.3	4.9	13.4	6.7
Nebraska.....	903.020	0.5	3.2	2.7	4.5	7.8	5.0
Nevada.....	1,290.577	-1.0	8.7	9.8	6.5	15.8	5.4
New Hampshire.....	626.895	5.2	9.3	3.9	6.1	16.0	11.6
New Jersey.....	3,655.523	-0.1	6.0	6.2	3.7	10.0	3.6
New Mexico.....	697.339	1.0	4.4	3.4	3.8	8.4	4.9
New York.....	8,106.782	1.8	6.0	4.1	2.1	8.3	4.0
North Carolina.....	4,221.382	2.3	8.5	6.0	4.0	12.8	6.4
North Dakota.....	353.521	0.4	1.4	1.0	2.9	4.4	3.4
Ohio.....	4,914.708	2.5	5.1	2.5	2.2	7.3	4.7
Oklahoma.....	1,447.856	0.0	2.5	2.5	3.8	6.4	3.8
Oregon.....	1,768.132	2.4	6.4	3.9	5.0	11.7	7.5
Pennsylvania.....	5,392.391	2.6	5.6	2.9	2.3	8.0	5.0
Rhode Island.....	444.997	-0.8	6.5	7.4	2.7	9.4	1.9
South Carolina.....	1,927.745	0.7	6.9	6.2	5.2	12.5	5.9
South Dakota.....	395.987	2.0	5.8	3.6	2.8	8.7	4.9
Tennessee.....	2,924.910	4.2	9.8	5.5	2.5	12.5	6.7
Texas.....	11,749.004	0.7	6.4	5.7	4.4	11.1	5.2
Utah.....	1,445.634	3.1	7.8	4.6	2.7	10.7	5.9
Vermont.....	269.890	2.6	5.1	2.5	3.0	8.2	5.6
Virginia.....	3,437.901	2.5	5.1	2.6	2.1	7.3	4.6
Washington.....	3,071.488	6.4	8.3	1.8	2.6	11.1	9.2
West Virginia.....	573.943	0.1	4.3	4.2	4.0	8.5	4.1
Wisconsin.....	2,705.469	0.2	4.6	4.4	5.0	9.8	5.1
Wyoming.....	233.358	-2.9	1.4	4.4	6.8	8.3	3.7
Regions							
Midwest.....	29,083.765	2.2	5.7	3.5	2.6	8.4	4.8
Northeast.....	23,913.137	1.8	6.2	4.3	2.6	9.0	4.5
South.....	49,582.014	1.0	6.5	5.5	4.7	11.5	5.7
West.....	31,686.923	3.6	8.7	4.9	4.6	13.7	8.4

Table 2. Long run labor productivity and related data, private nonfarm sector

Area Name	2021 Employment (thousands)	Average annual percent change, 2007-21					
		Labor productivity	Output	Hours worked	Unit labor costs	Labor compensation	Hourly compensation
States							
Alabama.....	1,775.796	1.0	0.7	-0.3	2.1	2.8	3.1
Alaska.....	262.635	0.0	-0.4	-0.4	2.8	2.4	2.9
Arizona.....	2,790.263	0.9	1.5	0.7	2.2	3.8	3.1
Arkansas.....	1,158.640	0.7	1.1	0.4	2.1	3.2	2.8
California.....	15,875.602	2.6	2.9	0.4	1.4	4.3	4.0
Colorado.....	2,540.081	1.7	2.5	0.7	1.8	4.3	3.6
Connecticut.....	1,538.798	0.1	-0.3	-0.3	2.2	1.9	2.2
Delaware.....	404.929	0.7	0.4	-0.3	2.0	2.4	2.7
District of Columbia.....	518.028	1.2	1.5	0.3	2.0	3.6	3.2
Florida.....	8,524.066	0.8	1.6	0.8	2.4	4.1	3.3
Georgia.....	4,221.017	1.3	1.9	0.6	1.9	3.8	3.1
Hawaii.....	511.816	1.1	0.5	-0.6	2.1	2.6	3.3
Idaho.....	747.266	1.2	2.4	1.2	1.8	4.3	3.0
Illinois.....	5,326.186	1.0	0.8	-0.2	1.7	2.5	2.8
Indiana.....	2,873.899	0.9	1.1	0.3	2.0	3.1	2.8
Iowa.....	1,372.511	1.0	0.9	0.0	2.0	3.0	3.0
Kansas.....	1,202.725	1.7	1.4	-0.3	1.2	2.6	2.9
Kentucky.....	1,709.814	1.2	1.0	-0.2	2.1	3.1	3.3
Louisiana.....	1,698.722	-0.1	-0.3	-0.2	2.8	2.5	2.7
Maine.....	588.965	1.1	1.0	-0.1	2.1	3.1	3.2
Maryland.....	2,313.167	1.5	1.4	-0.2	1.6	2.9	3.1
Massachusetts.....	3,288.895	1.9	2.3	0.4	1.4	3.7	3.3
Michigan.....	3,834.613	0.9	0.6	-0.3	1.7	2.4	2.7
Minnesota.....	2,612.443	1.3	1.6	0.3	1.6	3.2	2.9
Mississippi.....	975.093	0.8	0.3	-0.5	2.0	2.3	2.8
Missouri.....	2,588.684	1.1	0.8	-0.3	1.9	2.8	3.1
Montana.....	452.731	1.3	1.4	0.1	2.7	4.1	4.0
Nebraska.....	903.020	1.8	1.9	0.1	1.4	3.3	3.2
Nevada.....	1,290.577	0.6	0.6	0.0	2.4	3.0	3.0
New Hampshire.....	626.895	1.7	1.8	0.2	1.8	3.7	3.5
New Jersey.....	3,655.523	0.8	0.8	0.0	1.8	2.6	2.7
New Mexico.....	697.339	1.6	1.0	-0.6	1.3	2.3	2.9
New York.....	8,106.782	1.7	1.8	0.1	1.1	2.9	2.8
North Carolina.....	4,221.382	0.9	1.6	0.7	2.2	3.9	3.2
North Dakota.....	353.521	3.4	4.7	1.3	0.4	5.1	3.8
Ohio.....	4,914.708	1.1	1.1	0.0	1.5	2.6	2.7
Oklahoma.....	1,447.856	1.3	1.7	0.4	1.4	3.2	2.8
Oregon.....	1,768.132	2.0	2.3	0.2	1.4	3.7	3.5
Pennsylvania.....	5,392.391	1.4	1.4	-0.1	1.5	2.8	2.9
Rhode Island.....	444.997	0.9	0.6	-0.2	1.9	2.6	2.8
South Carolina.....	1,927.745	1.3	1.7	0.4	2.0	3.8	3.3
South Dakota.....	395.987	1.1	1.9	0.8	2.4	4.3	3.5
Tennessee.....	2,924.910	1.2	1.8	0.6	1.7	3.6	2.9
Texas.....	11,749.004	1.3	2.7	1.4	1.7	4.4	3.0
Utah.....	1,445.634	1.7	3.2	1.4	1.8	5.0	3.5
Vermont.....	269.890	1.6	0.9	-0.8	1.6	2.5	3.3
Virginia.....	3,437.901	1.5	1.3	-0.2	1.7	3.0	3.1
Washington.....	3,071.488	2.7	3.5	0.7	1.6	5.1	4.3
West Virginia.....	573.943	1.3	0.6	-0.6	1.4	2.0	2.7
Wisconsin.....	2,705.469	0.8	1.1	0.2	2.0	3.1	2.8
Wyoming.....	233.358	-0.5	-1.1	-0.7	2.8	1.7	2.3
Regions							
Midwest.....	29,083.765	1.1	1.1	0.0	1.7	2.8	2.8
Northeast.....	23,913.137	1.4	1.4	0.0	1.4	2.9	2.9
South.....	49,582.014	1.2	1.7	0.6	1.9	3.7	3.1
West.....	31,686.923	2.1	2.6	0.4	1.6	4.2	3.8

Table 3. Labor productivity in selected periods, private nonfarm sector

Area Name	Average annual percent change		
	2007-19	2019-21	2007-21
States			
Alabama.....	1.0	0.9	1.0
Alaska.....	0.0	0.1	0.0
Arizona.....	0.7	2.0	0.9
Arkansas.....	0.6	1.3	0.7
California.....	2.1	5.1	2.6
Colorado.....	1.8	1.5	1.7
Connecticut.....	0.1	0.0	0.1
Delaware.....	0.4	2.3	0.7
District of Columbia.....	0.5	5.2	1.2
Florida.....	0.8	1.1	0.8
Georgia.....	1.4	0.6	1.3
Hawaii.....	1.1	1.2	1.1
Idaho.....	1.4	0.0	1.2
Illinois.....	0.9	1.7	1.0
Indiana.....	0.7	2.1	0.9
Iowa.....	0.6	3.1	1.0
Kansas.....	1.6	2.5	1.7
Kentucky.....	1.2	1.4	1.2
Louisiana.....	-0.4	1.9	-0.1
Maine.....	0.8	3.1	1.1
Maryland.....	1.5	1.5	1.5
Massachusetts.....	1.6	4.0	1.9
Michigan.....	0.5	3.5	0.9
Minnesota.....	1.1	2.1	1.3
Mississippi.....	0.4	3.0	0.8
Missouri.....	0.9	2.5	1.1
Montana.....	1.3	1.3	1.3
Nebraska.....	1.7	1.9	1.8
Nevada.....	0.5	1.1	0.6
New Hampshire.....	1.2	4.4	1.7
New Jersey.....	0.6	2.0	0.8
New Mexico.....	1.4	2.7	1.6
New York.....	1.3	3.9	1.7
North Carolina.....	0.8	1.5	0.9
North Dakota.....	3.5	2.7	3.4
Ohio.....	0.9	2.2	1.1
Oklahoma.....	1.6	-0.5	1.3
Oregon.....	1.8	3.6	2.0
Pennsylvania.....	1.1	3.2	1.4
Rhode Island.....	0.7	2.1	0.9
South Carolina.....	1.1	2.4	1.3
South Dakota.....	1.2	0.6	1.1
Tennessee.....	1.1	2.0	1.2
Texas.....	1.3	1.0	1.3
Utah.....	1.4	3.2	1.7
Vermont.....	1.3	3.5	1.6
Virginia.....	1.3	2.4	1.5
Washington.....	2.3	5.2	2.7
West Virginia.....	1.2	1.7	1.3
Wisconsin.....	0.9	0.6	0.8
Wyoming.....	-0.4	-1.0	-0.5
Regions			
Midwest.....	0.9	2.2	1.1
Northeast.....	1.1	3.2	1.4
South.....	1.1	1.3	1.2
West.....	1.8	4.0	2.1

Table 4. Contributions to national labor productivity, private nonfarm sector

Area Name	Share Weight (percent)	Average annual percent change, 2007-21	
		Labor Productivity	Contribution to National
National		1.4	
Alabama.....	1.1	1.0	0.011
Alaska.....	0.3	0.0	0.000
Arizona.....	1.7	0.9	0.015
Arkansas.....	0.7	0.7	0.005
California.....	13.5	2.6	0.352
Colorado.....	1.8	1.7	0.030
Connecticut.....	1.5	0.1	0.002
Delaware.....	0.4	0.7	0.003
District of Columbia.....	0.5	1.2	0.006
Florida.....	5.0	0.8	0.040
Georgia.....	2.9	1.3	0.038
Hawaii.....	0.4	1.1	0.004
Idaho.....	0.4	1.2	0.004
Illinois.....	4.5	1.0	0.045
Indiana.....	1.9	0.9	0.017
Iowa.....	0.9	1.0	0.009
Kansas.....	0.8	1.7	0.014
Kentucky.....	1.1	1.2	0.013
Louisiana.....	1.4	-0.1	-0.001
Maine.....	0.3	1.1	0.004
Maryland.....	1.8	1.5	0.027
Massachusetts.....	2.8	1.9	0.054
Michigan.....	2.7	0.9	0.024
Minnesota.....	1.9	1.3	0.024
Mississippi.....	0.6	0.8	0.004
Missouri.....	1.7	1.1	0.018
Montana.....	0.2	1.3	0.003
Nebraska.....	0.6	1.8	0.011
Nevada.....	0.8	0.6	0.005
New Hampshire.....	0.4	1.7	0.007
New Jersey.....	3.2	0.8	0.025
New Mexico.....	0.4	1.6	0.007
New York.....	8.3	1.7	0.141
North Carolina.....	2.8	0.9	0.025
North Dakota.....	0.3	3.4	0.009
Ohio.....	3.4	1.1	0.038
Oklahoma.....	1.0	1.3	0.013
Oregon.....	1.1	2.0	0.022
Pennsylvania.....	4.0	1.4	0.057
Rhode Island.....	0.3	0.9	0.003
South Carolina.....	1.1	1.3	0.014
South Dakota.....	0.2	1.1	0.003
Tennessee.....	1.8	1.2	0.022
Texas.....	9.1	1.3	0.118
Utah.....	0.9	1.7	0.014
Vermont.....	0.2	1.6	0.003
Virginia.....	2.5	1.5	0.038
Washington.....	2.5	2.7	0.069
West Virginia.....	0.4	1.3	0.005
Wisconsin.....	1.7	0.8	0.014
Wyoming.....	0.2	-0.5	-0.001

Table 5. Contributions to national labor productivity in selected periods, private nonfarm sector

Area Name	Average annual percent change			
	2007-19	2019-21	2007-21	2020-21
National	1.3	2.5	1.4	2.0
Alabama.....	0.011	0.009	0.011	0.016
Alaska.....	0.000	0.000	0.000	-0.006
Arizona.....	0.012	0.035	0.015	0.053
Arkansas.....	0.004	0.008	0.005	0.000
California.....	0.281	0.742	0.352	0.616
Colorado.....	0.032	0.027	0.030	0.025
Connecticut.....	0.002	0.000	0.002	0.020
Delaware.....	0.002	0.009	0.003	-0.003
District of Columbia.....	0.003	0.027	0.006	0.024
Florida.....	0.040	0.058	0.040	-0.026
Georgia.....	0.041	0.018	0.038	-0.012
Hawaii.....	0.004	0.004	0.004	-0.003
Idaho.....	0.005	0.000	0.004	0.009
Illinois.....	0.041	0.073	0.045	0.119
Indiana.....	0.014	0.040	0.017	0.042
Iowa.....	0.006	0.028	0.009	0.019
Kansas.....	0.013	0.021	0.014	0.012
Kentucky.....	0.013	0.014	0.013	0.014
Louisiana.....	-0.006	0.022	-0.001	0.009
Maine.....	0.003	0.010	0.004	0.002
Maryland.....	0.027	0.026	0.027	0.022
Massachusetts.....	0.045	0.116	0.054	0.073
Michigan.....	0.013	0.089	0.024	0.048
Minnesota.....	0.021	0.039	0.024	0.068
Mississippi.....	0.002	0.015	0.004	0.015
Missouri.....	0.015	0.040	0.018	0.043
Montana.....	0.003	0.003	0.003	0.004
Nebraska.....	0.010	0.012	0.011	0.003
Nevada.....	0.004	0.009	0.005	-0.008
New Hampshire.....	0.005	0.019	0.007	0.022
New Jersey.....	0.019	0.060	0.025	-0.003
New Mexico.....	0.006	0.011	0.007	0.004
New York.....	0.108	0.330	0.141	0.151
North Carolina.....	0.022	0.043	0.025	0.066
North Dakota.....	0.009	0.007	0.009	0.001
Ohio.....	0.031	0.073	0.038	0.083
Oklahoma.....	0.016	-0.004	0.013	0.000
Oregon.....	0.019	0.041	0.022	0.027
Pennsylvania.....	0.045	0.123	0.057	0.100
Rhode Island.....	0.002	0.006	0.003	-0.002
South Carolina.....	0.012	0.027	0.014	0.008
South Dakota.....	0.003	0.002	0.003	0.005
Tennessee.....	0.020	0.037	0.022	0.078
Texas.....	0.118	0.089	0.118	0.062
Utah.....	0.012	0.031	0.014	0.030
Vermont.....	0.002	0.005	0.003	0.004
Virginia.....	0.033	0.058	0.038	0.061
Washington.....	0.057	0.149	0.069	0.186
West Virginia.....	0.005	0.006	0.005	0.000
Wisconsin.....	0.015	0.010	0.014	0.003
Wyoming.....	-0.001	-0.002	-0.001	-0.005

Table 6. Contributions to regional labor productivity, private nonfarm sector

Area Name	Share Weight (percent)	Percent change, 2020-21	
		Labor Productivity	Contribution to Region
Northeast.....		1.8	
Connecticut.....	6.6	1.5	0.099
Maine.....	1.6	0.5	0.008
Massachusetts.....	14.0	2.5	0.351
New Hampshire.....	2.1	5.2	0.108
New Jersey.....	14.4	-0.1	-0.014
New York.....	40.7	1.8	0.732
Pennsylvania.....	18.5	2.6	0.482
Rhode Island.....	1.4	-0.8	-0.011
Vermont.....	0.7	2.6	0.019
South.....		1.0	
Alabama.....	3.1	1.5	0.046
Arkansas.....	1.9	0.0	0.000
Delaware.....	1.1	-0.7	-0.008
District of Columbia.....	1.6	4.6	0.072
Florida.....	15.7	-0.5	-0.079
Georgia.....	9.1	-0.4	-0.036
Kentucky.....	3.0	1.4	0.042
Louisiana.....	3.4	0.8	0.027
Maryland.....	5.1	1.3	0.066
Mississippi.....	1.5	2.9	0.044
North Carolina.....	8.5	2.3	0.196
Oklahoma.....	2.5	0.0	0.000
South Carolina.....	3.4	0.7	0.024
Tennessee.....	5.5	4.2	0.233
Texas.....	26.3	0.7	0.184
Virginia.....	7.2	2.5	0.181
West Virginia.....	1.1	0.1	0.001
Midwest.....		2.2	
Illinois.....	21.3	2.8	0.596
Indiana.....	9.5	2.2	0.209
Iowa.....	4.6	2.1	0.097
Kansas.....	4.1	1.4	0.058
Michigan.....	12.7	1.9	0.241
Minnesota.....	9.2	3.7	0.342
Missouri.....	8.0	2.7	0.216
Nebraska.....	3.1	0.5	0.015
North Dakota.....	1.3	0.4	0.005
Ohio.....	16.7	2.5	0.418
South Dakota.....	1.3	2.0	0.025
Wisconsin.....	8.2	0.2	0.016
West.....		3.6	
Alaska.....	0.8	-3.0	-0.025
Arizona.....	6.9	3.0	0.206
California.....	56.7	4.2	2.383
Colorado.....	7.0	1.4	0.098
Hawaii.....	1.3	-0.8	-0.010
Idaho.....	1.5	2.3	0.034
Montana.....	0.9	1.7	0.015
Nevada.....	3.3	-1.0	-0.033
New Mexico.....	1.6	1.0	0.016
Oregon.....	4.4	2.4	0.105
Utah.....	3.8	3.1	0.117
Washington.....	11.2	6.4	0.719
Wyoming.....	0.6	-2.9	-0.019