

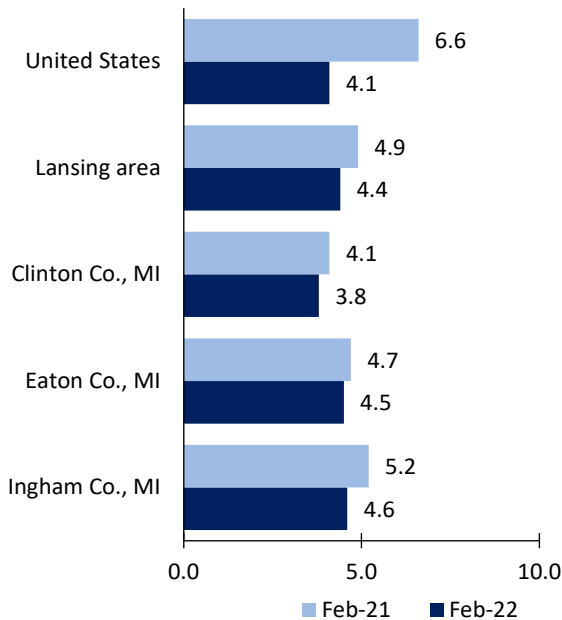
Lansing Area Economic Summary

Updated April 07, 2022

This summary presents a sampling of economic information for the area; supplemental data are provided for regions and the nation. Subjects include **unemployment, employment, wages, prices, spending, and benefits**. All data are not seasonally adjusted and some may be subject to revision. Area definitions may differ by subject. For more area summaries and geographic definitions, see www.bls.gov/regions/economic-summaries.htm.

Unemployment rates for the nation and selected areas

Unemployment rates

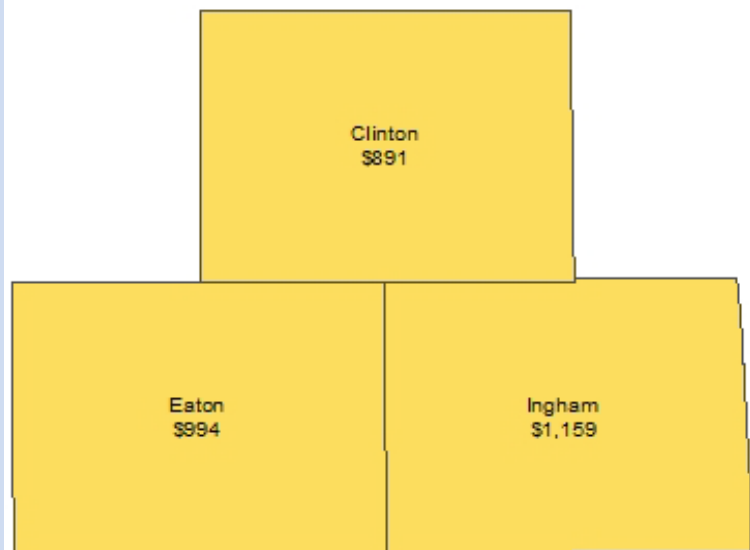


Source: U.S. BLS, Local Area Unemployment Statistics.

Average weekly wages for all industries by county

Lansing area, third quarter 2021

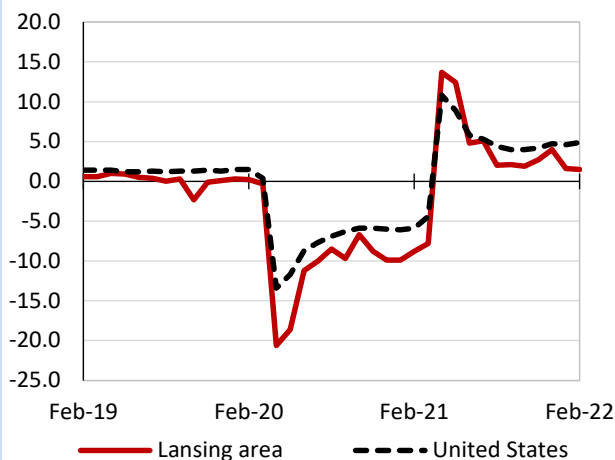
(U.S. = \$1,251; Area = \$1,103)



Source: U.S. BLS, Quarterly Census of Employment and Wages.

Over-the-year changes in employment on nonfarm payrolls and employment by major industry sector

12-month percent changes in employment



Source: U.S. BLS, Current Employment Statistics.

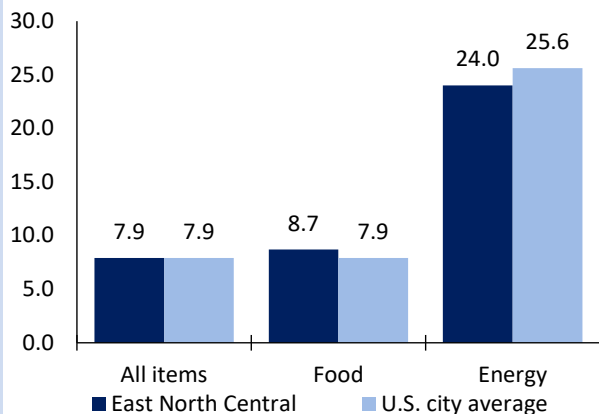
Lansing area employment (number in thousands)	Feb. 2022	Change from Feb. 2021 to Feb. 2022	
		Number	Percent
Total nonfarm	221.4	3.2	1.5
Mining, logging, and construction	7.8	0.1	1.3
Manufacturing	20.0	1.1	5.8
Trade, transportation, and utilities	35.7	0.8	2.3
Information	3.6	0.4	12.5
Financial activities	17.7	0.1	0.6
Professional and business services	23.7	1.6	7.2
Education and health services	30.7	-0.5	-1.6
Leisure and hospitality	16.5	2.7	19.6
Other services	9.3	0.6	6.9
Government	56.4	-3.7	-6.2

Source: U.S. BLS, Current Employment Statistics.



Over-the-year change in the prices paid by urban consumers for selected categories

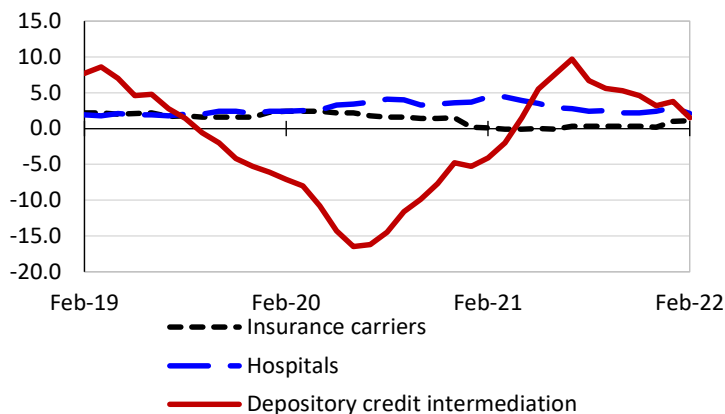
12-month percent change in CPI-U, February 2022



Source: U.S. BLS, Consumer Price Index.

Over-the-year changes in the selling prices received by producers for selected industries nationwide

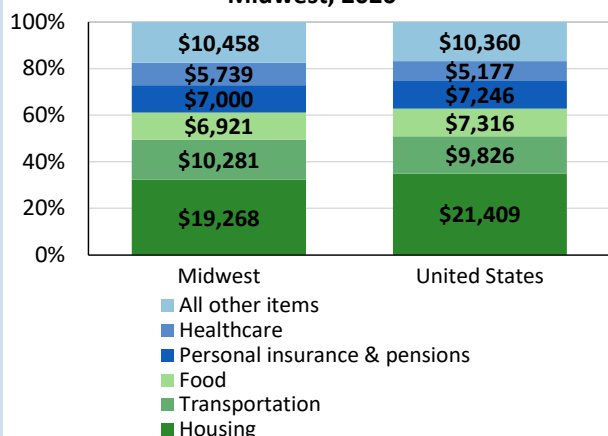
12-month percent changes in PPI



Source: U.S. BLS, Producer Price Index.

Average annual spending and percent distribution for selected categories

Average annual expenditures, United States and Midwest, 2020



Source: U.S. BLS, Consumer Expenditure Survey.

Average hourly wages for selected occupations

Occupation	Lansing area	United States
All occupations	\$27.20	\$28.01
Instructional coordinators	36.62	33.92
Claims adjusters, examiners, and investigators	33.29	34.11
Machinists	22.30	23.57
Waiters and waitresses	16.52	13.95
Data entry keyers	16.01	17.28
Retail salespersons	15.64	15.35

Source: U.S. BLS, Occupational Employment and Wage Statistics, May 2021.

Employer costs per hour worked for wages and selected employee benefits by geographic division

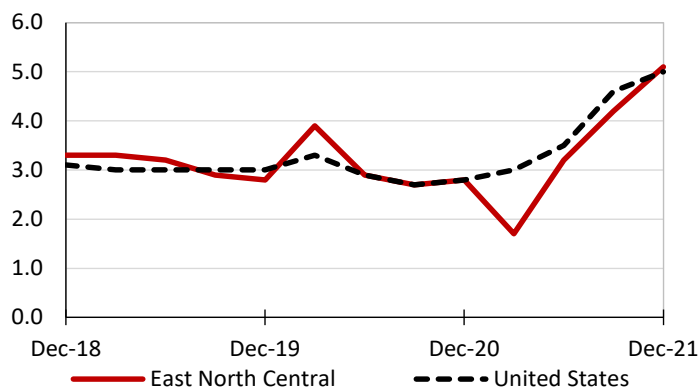
Private industry, December 2021	East North Central (1)	United States
Total compensation	\$37.92	\$38.07
Wages and salaries	26.24	26.86
Total benefits	11.68	11.22
Paid leave	2.73	2.85
Vacation	1.46	1.46
Supplemental pay	1.49	1.32
Insurance	3.13	2.87
Retirement and savings	1.56	1.32
Legally required benefits	2.77	2.86

(1) The states that compose the East North Central census division are: IL, IN, MI, OH, and WI.

Source: U.S. BLS, Employer Costs for Employee Compensation.

Over-the-year changes in wages and salaries

12-month percent changes in ECI



Source: U.S. BLS, Employment Cost Index.

