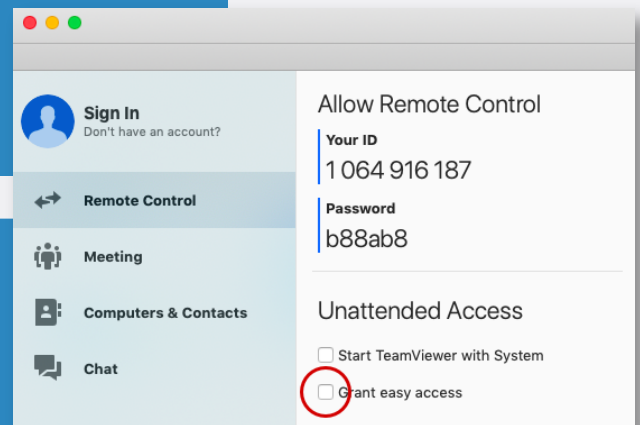


How to Set Up Unattended Access

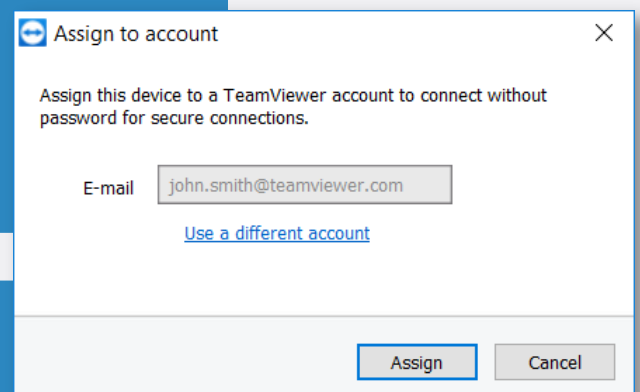
Unattended remote access allows you to quickly and instantly set up a remote access session with devices located anywhere in the world without a connection partner on the other end. You can set up unattended access in four easy steps.

1 Step One
Install and open TeamViewer on the remote device.



2 Step Two
On the remote device, check the **Grant easy access** checkbox.

3 Step Three
Enter the email address for the TeamViewer account you'd like to assign this device to and click **Assign**.



4 Step Four
Next, simply add the remote computer to your partner list, and you are ready to begin an unattended remote access session. As long as the computer is connected to a power source and the internet, you can gain access from anywhere in the world.

That's it! Now you can easily connect to unattended remote devices any time you need to.