

Spatial Information for Decision Making

Policy of the National Land Survey of Iceland



National Land Survey of Iceland

The National Land Survey of Iceland is a government agency under the Ministry for the Environment and Natural Resources and is based in Akranes, Iceland. The institute performs tasks in the field of surveying, spatial data, remote sensing and other basic spatial information.

At the National Land Survey of Iceland our policy is a living document and sets out goals, future visions, values, and covers the main emphasis of the institution's fields.

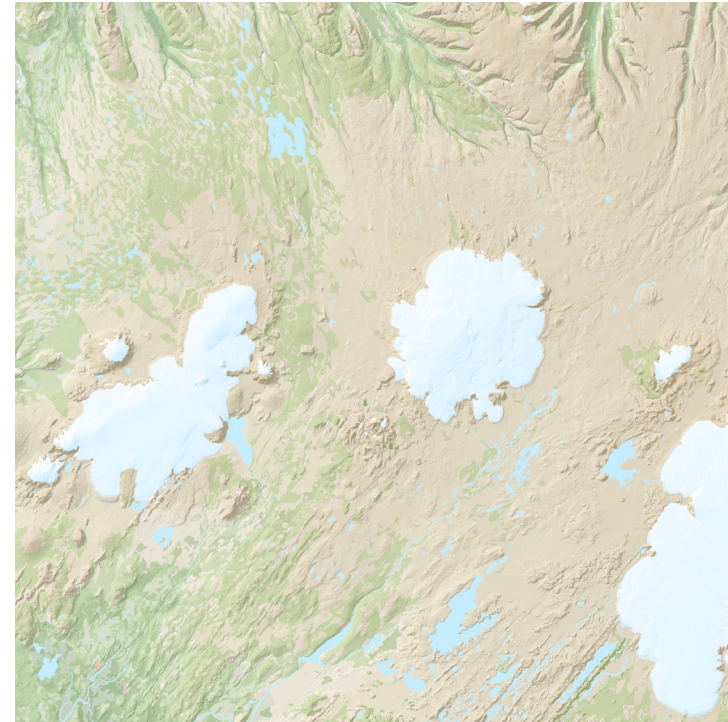
The main vision of the National Land Survey of Iceland is that spatial information, which many people know as map data, will be used as key data when decisions are made.

Publisher: National Land Survey of Iceland
Photographs: Guðni Hannesson
Cover photo: Melrakkaslétta

Layout: National Land Survey of Iceland
Release date: 01.11.2021

Role

The role of the National Land Survey of Iceland is to ensure that basic geographical information about Iceland is always available.



Geographical information about Iceland

Future Vision

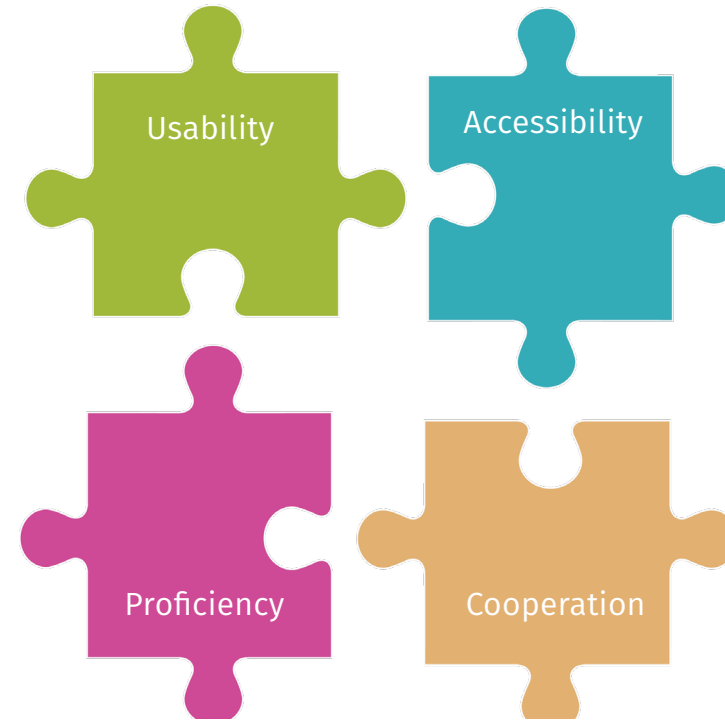
Reliable public spatial information will be used as key data in decision making.



Spatial information for decision making

Values

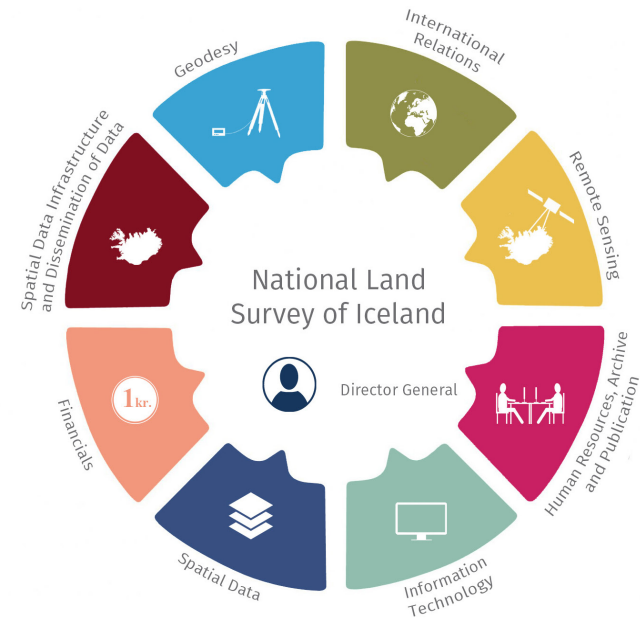
We are proficient and constantly acquire new knowledge. We use the latest technology to ensure that data and information from the National Land Survey of Iceland is reliable and in accordance with the needs of the society. We focus on transparency of information, cooperation and easy access to data.



Values

Management Structure

The management structure of the National Land Survey of Iceland is shaped by cooperation where communication channels are short and the responsibilities of professional roles are clear.

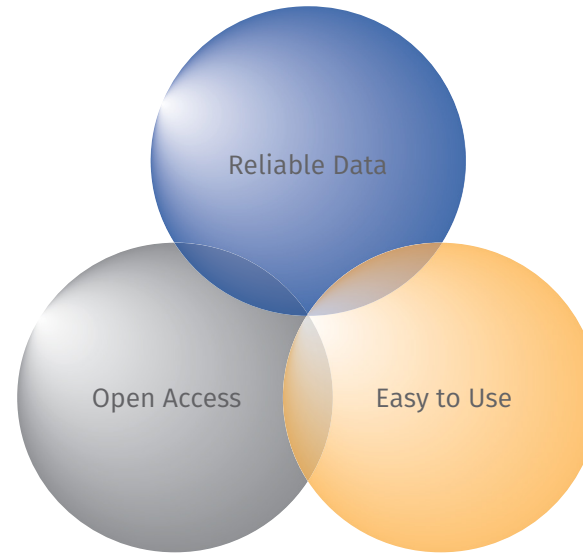


Emphasis on Collaboration

The Big Stones

- Towards a Future Vision -

Our future vision: Spatial information will be key data used in decision making, and will be achieved through the integration of reliable data, open access to data and availability of interfaces that simplify use of data. The National Land Survey of Iceland will emphasize this on all future projects.



Towards a Future Vision

Tasks of the National Land Survey of Iceland



The projects of the National Land Survey of Iceland support the goals and future vision of the institute. The focus is on flexibility, follow-up and the evaluation of performance.

This is the key to success.

Remote Sensing

- With a Clear Picture -

Aerial Photographs

Copernicus

Drone Data

Elevation Models

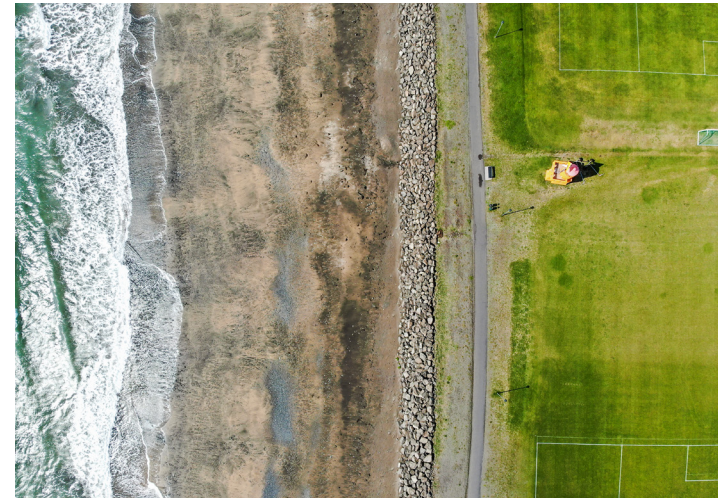
Monitoring

Radar Data

Reference Area

Satellite Images

The National Land Survey of Iceland uses remote sensing data in its operations as it is an important basic data for mapping and monitoring, e.g., land change and the effects of climate change. Our employees inform about innovations in the field of Remote Sensing and have knowledge regarding processing and utilization in that field.



Geodesy

- We Know Where We Are -

Geoid

National Coordinate System

Permanent Reference Stations

Surveying Database

Vertical Reference System

The National Geodetic System is one of the basic systems of the Icelandic society. It is practical for a diverse group of users and plays a key role in local decisions, e.g., for mapping, construction, modern agriculture, land monitoring and automatic vehicles. The accuracy of the system ensures safe positioning of the users.



Spatial Data

- Everything Happens Somewhere -

Comprehensive Road Database

Elevation Data

Elevation Model

Hydrography

Municipal Boundaries

Place Names

Shoreline

Accurate and up-to-date Spatial data are amongst the basic data of every nation. Presenting information on maps is important to increase understanding of the circumstances dealt with. By defining the basic spatial data of the public sector, its existence and updating will be ensured in cooperation with public bodies and private companies.



Spatial Data Infrastructure

- Where Information Meet -

Data Descriptions

Geoportal

INSPIRE

Map Making

Metadata Portal

Open Data

Quality Issues

Trust in a digital society is formed through reliable and integrated information. The National Land Survey of Iceland initiates co-operation between public bodies to increase general use and access to spatial information.



Information Technology

- Well Connected -

Backup

Databases

Operation Of the Computer System

Project Outsourcing

Safety Standards

Software Development

Web Services

An ever-changing technological environment demands a great deal of good technical knowledge. Information technology is a key part of the operations, and the institute uses the best technology at any given time, with an emphasis on open-source software as well as supporting the goals of a digital Iceland.



Dissemination of Information

- We Keep People Informed -

Annual Report

E-mails

Facebook

Map Viewers

Newsletter

Twitter

Website

Basic maps and geospatial information of Iceland are shared free of charge using accessible and open methods. Through web services and web browsers, the dissemination of information is tailored to different user groups. The National Land Survey of Iceland also shares what may be fun and interesting through news and social media.



Environmental Issues

- Prosperity for All -

Climate Change

Environmental Issues

Green Steps

UN-Sustainable Development Goals

The National Land Survey of Iceland is exemplary in environmental matters and we strive to ensure that our work has the most positive impact on the environment. We emphasize on obtaining and disseminating important basic data related to the environment and climate, as well as, monitoring the United Nations Sustainable Development Goals 2030.



The Workplace

- Where People Feel Good -



The National Land Survey of Iceland is a workplace where employees feel supported and meet satisfying challenges.

The organization's culture supports family life, teleworking and a healthy lifestyle.

Staff

- Everyone is Important -

Collaboration

Communication

Compassion

Initiative

Innovation

Knowledge

The staff of the National Land Survey of Iceland uphold a culture of effective communication and empathy. In communication, there is trust, equality and joy. The National Land Survey of Iceland is an institute of knowledge where staff emphasizes lifelong learning, innovation, initiative and cooperation. Employees work to be among the best in their field.



Working Hours

- Flexibility Comes First -

Flexible Working Hours

Shortened Working Hours

Teamwork

Teleworking

The National Land Survey of Iceland emphasizes efficiency through teamwork, innovation and togetherness in the workplace. Working hours are flexible in a 36-hour working week where employees can choose to work part-time remotely. In telework, employees ensure that work facilities are exemplary and working hours are well utilized.



Management

- Listen to Each Other -

Equal Pay Certificate

Follow-up

Goal Setting

Good Management

Solidarity

Success

The management and organization of the National Land Survey of Iceland supports its policy, future vision and goals. Effective information sharing, exemplary operations and collaboration contribute to everyone being able to work to a set goal. A focus on clear project management is important to us while showing empathy and lightness in management.



